

Journal of Visualized Experiments

Rapid screening of bacteria-specific compounds for interrogating distal lung infection in the intensive care unit by confocal laser endomicroscopy --Manuscript Draft--

Manuscript Number:	JoVE56284R2
Full Title:	Rapid screening of bacteria-specific compounds for interrogating distal lung infection in the intensive care unit by confocal laser endomicroscopy
Article Type:	Invited Methods Article - JoVE Produced Video
Keywords:	Optical probe; bacterial infection; confocal laser endomicroscopy; distal lung; translation; intensive care unit; optical imaging
Manuscript Classifications:	3.1: Bacterial Infections and Mycoses; 3.8: Respiratory Tract Diseases; 5.1: Diagnosis; 5.1.370.350: Diagnostic Imaging; 5.1.370.350.557: Molecular Imaging; 5.5.601: Molecular Probe Techniques; 5.7.632: Optical Devices; 5.7.632.750: Optical Fibers
Corresponding Author:	Bethany Mills University of Edinburgh Edinburgh, Edinburgh UNITED KINGDOM
Corresponding Author Secondary Information:	
Corresponding Author E-Mail:	beth.mills@ed.ac.uk
Corresponding Author's Institution:	University of Edinburgh
Corresponding Author's Secondary Institution:	
First Author:	Bethany Mills
First Author Secondary Information:	
Other Authors:	Ahsan R Akram Emma Scholefield Mark Bradley Kevin Dhaliwal
Order of Authors Secondary Information:	
Abstract:	<p>Improving the speed and accuracy of bacterial detection is important for patient stratification and to ensure the appropriate use of antimicrobials. To achieve this goal, the development of diagnostic techniques to recognize bacterial presence in real-time at the point-of-care are required.</p> <p>Optical imaging for direct identification of bacteria within the host is an attractive approach. Several attempts at chemical probe design and validation have been investigated, however none have yet been successfully translated into the clinic. Here we describe a method for ex vivo validation of bacteria-specific probes for identification of bacteria within the distal lung, imaged by fibered confocal fluorescence microscopy (FCFM).</p> <p>Our model used ex vivo human lung tissue and a clinically approved confocal laser endomicroscopy (CLE) platform to screen novel bacteria-specific imaging compounds, closely mimicking imaging conditions expected to be encountered with patients. Therefore, screening compounds by this technique provides confidence of potential clinical tractability.</p>
Author Comments:	
Additional Information:	
Question	Response

If this article needs to be "in-press" by a certain date, please indicate the date below and explain in your cover letter.

Dear Constantinos Katevatis,

Thank you for your editorial comments for our 'Rapid screening of bacteria-specific probes for interrogating distal lung infection in the intensive care unit by confocal laser endomicroscopy' manuscript.

We have taken every effort to address each of your comments, and have included all track changes in the revised manuscript. Our responses to each of your points are detailed below.

We look forward to hearing from you.

Best wishes

Dr Bethany Mills

Research Fellow in Optical Imaging

PROTEUS Hub, Room E2.32
University of Edinburgh
Queens Medical Research Institute
47 Little France Crescent
Edinburgh
EH16 4TJ
Tel: [+44 \(0\)131 242 9180](tel:+441312429180)
Website: <http://www.proteus.ac.uk>
Twitter: <https://twitter.com/edPROTEUS>
Facebook: EPSRC Proteus | Facebook

-
- Please review and address the revisions and comments made on the most current manuscript file.

[These have been addressed individually within the manuscript file.](#)

- The language in the manuscript is not publication grade. Please take the time to proofread or send it for copyediting.

[The manuscript has now undergone further proofreading to correct for grammatical errors.](#)

- Please use American-English.

[American English has now been implemented.](#)

- Please add the following to the Table of Materials: FCFM imaging fiber software, data analysis software, etc.

This software was listed in the original table. It is called 'IC-viewer'.

- After providing the necessary details, please highlight up to 2.75 pages of the protocol that you would like to film. Please note that complete sentences must be highlighted.

The highlighted text is less than 2.75 pages.

- Figure 1 – Please remove commercial language 'Cellvizio'.

The commercial language has been removed.

- Figure 1/2/3 – Please provide higher resolution images.

We have provided figures at the highest resolution possible.

TITLE:

Rapid Screening of Bacteria-specific Compounds for Interrogating Distal Lung Infection in the Intensive Care Unit by Confocal Laser Endomicroscopy

AUTHORS & AFFILIATIONS:

Bethany Mills¹, Ahsan R. Akram¹, Emma Scholefield¹, Mark Bradley², Kevin Dhaliwal¹

¹EPSRC Proteus Hub, MRC Centre of Inflammation Research, Queen's Medical Research Institute, University of Edinburgh, 47 Little France Crescent, EH16 4TJ, Edinburgh, UK.

²School of Chemistry, EaStChem, University of Edinburgh, Joseph Black Building, David Brewster Road, Edinburgh, EH9 3FJ, UK.

AUTHOR EMAILS:

Bethany Mills (beth.mills@ed.ac.uk)

Ahsan R. Akram (ahsan.akram@ed.ac.uk)

Emma Scholefield (emma.scholefield@ed.ac.uk)

Mark Bradley (mark.bradley@ed.ac.uk)

Kevin Dhaliwal (kev.dhaliwal@ed.ac.uk)

CORRESPONDING AUTHOR:

Kev Dhaliwal (Kev.Dhaliwal@ed.ac.uk)

Tel: +44 (0)131 242 9180

KEYWORDS:

Optical probe, bacterial infection, confocal laser endomicroscopy, distal lung, translation, intensive care unit, optical imaging.

SHORT ABSTRACT:

This technique describes an efficient screening process for evaluating bacteria-specific optical imaging agents within *ex vivo* human lung tissue, by fibered confocal fluorescence microscopy for the rapid identification of small molecule chemical probe-candidates with translatable potential.

LONG ABSTRACT:

Improving the speed and accuracy of bacterial detection is important for patient stratification and to ensure the appropriate use of antimicrobials. To achieve this goal, the development of diagnostic techniques to recognize bacterial presence in real-time at the point-of-care is required. Optical imaging for direct identification of bacteria within the host is an attractive approach. Several attempts at chemical probe design and validation have been investigated, however none have yet been successfully translated into the clinic. Here we describe a method for *ex vivo* validation of bacteria-specific probes for identification of bacteria within the distal lung, imaged by fibered confocal fluorescence microscopy (FCFM). Our model used *ex vivo* human lung tissue and a clinically approved confocal laser endomicroscopy (CLE) platform to screen novel bacteria-specific imaging compounds, closely mimicking imaging conditions expected to be encountered with patients. Therefore, screening compounds by this technique provides confidence of potential clinical tractability.

INTRODUCTION:

This technique describes a rapid screening process for evaluating bacteria-specific optical imaging agents within *ex vivo* human lung tissue by CLE using FCFM for the rapid identification of compounds with potential clinical utility for visualizing bacteria in the distal lung *in situ*.

There is an urgent global requirement to ration antimicrobial prescribing in the era of rising antimicrobial resistance¹. To this end, the development of diagnostic methods which act to identify bacterial infection with high specificity, sensitivity, and in real-time are highly sought². Current techniques to confirm a diagnosis of pneumonia in critically unwell patients, such as those within intensive care units (ICUs), often rely on interpreting non-specific clinical or radiological features alongside bacterial culture techniques from aspirated fluids/tissues, which can take up to 3 days to produce results. Furthermore, bacterial culture from fluid instilled into the distal lung and retrieved is prone to contamination from more proximal airways³ and is often culture negative due to concomitant antimicrobial therapy or poor sampling techniques. Additionally, molecular techniques such as polymerase chain reaction are overly sensitive when used on aspirated fluids, risking overtreatment of patients. An emerging diagnostic approach is molecular optical imaging, making *in situ* molecular pathology of tissues a possibility; however, the development and validation of optical imaging compounds is required. Nonetheless, direct visualization of bacteria, via activatable optical probes is potentially a very powerful method to allow the study of the presence and evolution of pneumonia in the patient, and importantly, could be used to study host-pathogen interactions in response to therapies in real-time *in situ*.

CLE is an established investigative procedure in multiple diseases⁴, including within the fields of gastroenterology⁵, oncology^{6,7}, and for interrogating airways and alveolar sacs^{8,9}. It enables point-of-care structural imaging of diseased tissue using a fiber imaging bundle, which passes through the working channel of a clinical endoscope and forms direct contact with the tissue surface to be imaged by confocal microscopy. However, one limitation that remains is the need for generic contrast agents. Therefore, the use of disease specific probes, such as specific bacterial agents, could vastly expand the utility of this modality by directly visualizing bacteria at the site of suspected infection. Optical agents offer many advantages over other techniques by enabling real-time, high resolution imaging with diagnostic potential. Moreover, optical probes offer the prospect of multiplexing for interrogating multiple targets, all achieved at a relatively low cost. A number of optical agents are under development for such a purpose, however none have yet been successfully implemented within the clinic¹⁰. We have synthesized a library of small molecule chemical probes with specificity towards bacteria and developed a rapid, effective pipeline for evaluation of probe function for detecting bacterial pneumonia *in situ*¹¹.

To identify suitable probe candidates, the following prerequisites had to be fulfilled prior to interrogation of the probe on *ex vivo* human lung tissue by FCFM: i) aqueous solubility, ii) specificity and selectivity for rapidly labeling clinically relevant bacteria, iii) a high signal-to-noise ratio, and iv) resistance to degradation within the lung environment. The latter was assessed by bronchoalveolar lavage fluid (BALF) from patients with acute respiratory distress syndrome (ARDS), which is a condition that is characterized by proteolytic and inflammatory environments in the lung in the ICU. Moreover, the probes had to have a

suitable fluorophore for detection by a clinically approved optical CLE imaging device within human lung alveolar tissue.

The pipeline to interrogate each of these prerequisites was as follows (at each stage, only probes that passed were carried forward to the next): (1) a library of probes to be investigated was synthesized; (2) each probe was added to a panel of live bacteria for confocal laser scanning microscopy (CLSM) to ensure bacterial labeling; (3) selectivity of bacterial labeling over mammalian cells in co-cultures with primary human neutrophils was established by CLSM; (4) stability and successful labeling of bacteria in the presence of the ARDS patient BALF was determined by CLSM and Matrix Assisted Laser Desorption/Ionization-Time of Flight (MALDI-TOF) Mass Spectrometry; (5) optimal concentration of candidates was determined by CLSM, ensuring selectivity for bacteria over mammalian cells was maintained; (6) candidates were imaged by FCFM in suspension and on *ex vivo* human lung alveolar tissue to ensure stability and that the signal-to-noise was adequate for detection. Step 6 is described in detail within this protocol. Methodology for steps 1–5 has been previously reported¹¹.

PROTOCOL:

All human lung tissue was obtained following informed consent and the study was approved by the Regional Ethics Committee.

1. Preparation of Biological Samples

1.1. Preparation of probes

1.1.1. Make up a 1 mM stock solution of each probe (*e.g.*, Calcein AM, UBI-3, UBI-10, *etc.*) in sterile dH₂O, using a fine balance to weigh the freeze-dried probe compound¹¹. Calculate the volume of dH₂O to add based on the weighed mass and molecular weight of the probe.

1.2. Preparation of bacterial cultures

Note: For this method, *Staphylococcus aureus* was used as the exemplar strain. Any appropriate bacterial strain can be selected.

1.2.1. Select a single colony of desired bacterial strain from a fresh Lysogeny Broth (LB) agar plate using a sterile loop. Inoculate the colony into 10 mL of LB in a 50 mL centrifuge tube by dipping the end of the loop into the culture media. Incubate at 37 °C, 250 rpm for 16 h (or overnight).

1.2.2. Determine the OD₅₉₅ of the overnight culture by adding 100 µL of the overnight culture to 900 µL LB in a 1 mL cuvette. Measure the OD at 595 nm (using a cuvette with 1 mL LB as a blank) in a spectrophotometer. Multiply the obtained OD by 10 to obtain the OD for the overnight culture.

1.2.3. Subculture the overnight culture. Do this by adjusting the optical density at 595 nm (OD₅₉₅) to 0.1 in 10 mL of fresh LB. Calculate the required volume of overnight culture to be

added to 10 mL fresh LB to adjust the OD₅₉₅ to 0.1. Incubate the culture at 37 °C, 250 rpm until the culture reaches mid-log phase (OD₅₉₅ 0.6–0.8), approximately 4 h.

1.2.4. Measure the culture optical density (step 1.2.2) and harvest 1×10^8 colony forming units (CFU) (OD₅₉₅ $1 \sim 1 \times 10^8$ CFU/mL) of the bacterial culture into a 1.5 mL microtube (*e.g.*, if the bacterial culture is OD₅₉₅ 0.6, collect 1.67 mL). Centrifuge the culture at 10,000 x g at room temperature for 1 min to pellet the bacteria. Wash the pellet twice in phosphate buffered saline (PBS) by resuspending (pipetting up and down carefully) the pellet in 1 mL PBS, centrifuging as above, discarding the supernatant, and repeating. Take care not to dislodge the bacterial pellet when removing the supernatant. Resuspend the final pellet in 1 mL PBS.

Note: Prepare as many samples as required for each labeling procedure. The protocol may be paused here for up to 1 h, followed by step 1.2.5.1, 1.2.5.2, or 1.2.5.3.

1.2.5. Bacterial staining

1.2.5.1. To label the bacteria with Calcein AM, add the dye to a final concentration of 1 µM into the washed bacterial culture. Incubate the culture for 30 min at 37 °C with shaking at 300 rpm. Wash the counterstained bacterial suspension in PBS 3 times by centrifugation as in step 1.2.4 to remove excess dye. Resuspend in 1 mL PBS, dilute 100 µL 1:1 in PBS to obtain 200 µL of OD₅₉₅ 0.5 Calcein AM stained bacteria. The protocol may be paused here for up to 1 h.

1.2.5.2. To label the bacteria with test probes (*e.g.*, UBI-3 or UBI-10), dilute 100 µL of the bacterial culture 1:1 in PBS to obtain OD₅₉₅ 0.5 in 200 µL PBS. Add either of the probes to a final concentration of 10 µM. Invert the microtube several times to ensure thorough mixing of the bacteria and the probe.

Note: Imaging should be performed immediately after the addition of the probe to mimic the clinical scenario.

1.2.5.3. To prepare the control unstained bacterial samples, dilute 100 µL of the culture 1:1 with PBS to obtain 200 µL of unstained OD₅₉₅ 0.5 sample.

1.3. Preparation of *ex vivo* human lung tissue

Note: Human lung tissue samples were obtained from patients undergoing surgical resection for lung carcinoma. All tissue used for imaging was obtained from samples of normal lung tissue away from the cancerous growth. Samples were taken fresh from the operating theatre and stored in microtubes or centrifuge tubes at -80 °C until use.

1.3.1. Immediately before imaging, remove the human lung tissue sample from the freezer on dry ice. At room temperature, allow the tissue to thaw slightly; just enough to be sliced with a scalpel into 1 x 4 mm sections.

Note: The level of thawing is important; too frozen and the tissue will not slice without chipping off, too thawed and the tissue is too soft to slice.

1.3.2. Using forceps, place the sliced human lung tissue into wells of a 96-well clear flat-bottom tissue culture plate. Return any unused human lung tissue immediately to the storage container and place on dry ice for transport back to the -80 °C freezer.

1.3.3. Add 100 µL PBS to each lung tissue sample with a pipette. Use the pipette tip to ensure all the tissue is covered in the PBS (and not stuck to the walls of the well). The tissue will swell slightly and may float. Leave the PBS on the sample for a few minutes to allow any blood to leach from the tissue into the solution. Remove as much of the PBS as possible. The tissue may block the end of the pipette tip; try to angle the plate/tip placement in order to prevent this.

1.3.4. Pipette 100 µL of unstained, Calcein AM labeled, or test-probe labeled bacteria to each well containing lung tissue. Also set up controls with lung tissue and 100 µL PBS. To these control wells, probes without bacteria can be added to measure any increase in background fluorescence and/or non-specific activation of the probe by lung tissue alone. A well with lung tissue and PBS should also be included.

2. Imaging with the CLE Device with FCFM

2.1. Set up of CLE device

Note: Prepare the CLE system 20 min before calibration to allow the laser to warm up.

2.1.1. Press the on/off switch on the back of the transformer of the system and turn on the designated computer. Press the on/off button on the front of the laser scanning unit (LSU). Confirm the appearance of the green light, indicating that the unit is switched on.

2.1.2. Double click on the CLE software icon. Enter the login details and wait for the LSU to initialize (10–30 s).

2.1.3. For use of new FCFM imaging fibers, installation with the supplied CD is necessary. Insert the installation CD into the computer CD drive and follow the onscreen instructions.

2.1.4. Clean the FCFM imaging fiber connector unit with a fiber cleaner. Rub the connector on the cleaning ribbon in a figure eight motion to remove any dust/dirt. Remove the protective yellow cap from the front of the LSU.

2.1.5. Prepare the LSU hub by gently rotating the silver hub anti-clockwise until it stops. Insert the FCFM imaging fiber connector into the hub with the flat side of the connector facing upwards. Hold the fiber in place and rotate the silver hub clockwise until it clicks twice. Complete the connection by rotating the silver hub clockwise by a further 45 °.

Note: If the fiber is not recognized, check that the FCFM imaging fiber has been installed and connected in the correct orientation.

2.1.6. Follow the instructions that will pop-up for completing the FCFM imaging fiber calibration. There are 3 steps: (1) FCFM imaging fiber test (steps 2.1.7-2.1.8), (2) background acquisition (step 2.1.9), (3) fiber detection (step 2.1.10).

2.1.7. Press the 'start laser' button on the screen. The laser will center.

2.1.8. Select fresh vials (yellow: calibrate; red: clean; blue: rinse) from the calibration kit and follow the onscreen instructions: place the distal end of the FCFM imaging fiber into the yellow vial and watch for the increase in fluorescence on the monitor, then place the fiber tip into the red vial (without stirring). Wait for the fluorescence (as shown on the computer monitor) to disappear. Finally rinse the fiber tip in the blue vial.

Note: If the fluorescence does not disappear, clean the FCFM imaging fiber with 8% H₂O₂ and lens cleaning tissues and begin again. Repeat the process until satisfactory results are obtained (the image quality is clear, and no marks from dirt are apparent).

2.1.9. Place the FCFM imaging fiber into the blue vial. Press 'start laser' followed by 'calculate' when this becomes an option.

2.1.10. Place the FCFM imaging fiber into the yellow vial. Press 'start laser' followed by 'calculate' when this becomes an option.

2.1.11. During the automated calibration, clean the distal end of the FCFM imaging fiber by placing in the red vial for > 10 s, followed by the blue vial for > 4 s, as indicated by the software.

2.2. Data collection with CLE

2.2.1. Following setup, a window to select storage location and file prefix will open. Select the desired folder for data storage, and name the prefix accordingly.

2.2.2. Place the foot pedals so that they can be easily accessed by the operator. Left pedal: laser on/off; center pedal: pause; right pedal: record/stop.

Note: The laser controls can also be accessed through onscreen controls.

2.2.3. Click 'start' onscreen or press the left foot-pedal to turn on the laser. This will start acquisition and obtain images using 100% laser power and a frame rate of 12 frames/s (default settings).

Note: For other applications, these settings can be altered on screen if necessary, depending on the sample type.

2.2.4. Image each of the bacterial suspension samples.

2.2.4.1. Insert the distal end of the FCFM imaging fiber and move the fiber slowly through the suspension to interrogate the sample.

2.2.4.2. Record videos of any length (up to 10 min) by pressing the right foot pedal or selecting the onscreen record controls, as the fiber moves slowly around the sample.

2.2.4.3. Clean the distal end of the FCFM imaging fiber with 8% H₂O₂ and lens cleaning tissues between samples.

Note: Typical video lengths of 10–30s are sufficient for *in vitro* imaging.

2.2.5. Image each of the lung tissue samples.

2.2.5.1. Insert the distal end of the FCFM imaging fiber into the sample, ensuring that direct contact between the end of the fiber and the tissue is made. Gently move the end of the imaging fiber around to interrogate the sample.

Note: Lifting the end of the fiber away from the tissue will remove the tissue from the focal plane; however, this may be used to image labeled bacteria that are not adhered to the tissue.

2.2.5.2. Record videos of any length (up to 10 min) by pressing the right foot pedal or selecting the onscreen record controls, as the fiber moves slowly around the sample.

Note: Typically, video lengths of 30s are sufficient for *ex vivo* imaging on tissue.

2.2.5.3. Clean the distal end of the FCFM imaging fiber with lens cleaning tissues and 8% H₂O₂ between samples.

2.3. Turning off the system

2.3.1. Switch the laser off by pressing the left foot pedal or by clicking the on-screen button.

2.3.2. Disconnect the FCFM imaging fiber from the CLE device by turning the silver LSU hub anticlockwise until it stops. Remove the FCFM imaging fiber from the LSU hub by gently pulling the fiber connector from the LSU.

2.3.3. Clean and disinfect the FCFM imaging fiber with 8% H₂O₂ and lens cleaning tissues. Return the protective caps to the proximal end of the FCFM imaging fiber and the front of the LSU unit. Place the fiber gently in the storage box.

2.3.4. Close the data capture software and copy any saved files to an external USB device. Shut down the computer and turn off the LSU device by pressing the front panel I/O for 3 s until the green light disappears.

2.3.5. Dispose of human lung tissue and bacteria according to local regulations.

3. Data Analysis

3.1. Open the software and import the files for analysis by selecting the appropriate directory on the computer through the 'Go to' icon on the software dashboard.

Alternatively, files can be dragged and dropped into the software dashboard.

3.2. Double click on each video file to open them. The videos will automatically play with optimized color lookup table (LUT) and color table adjust. Disable the automatic intensity scaling, by clicking on the wand button above the intensity scale bar. The feature is disabled when there is no black shadowing around the button.

Note: Automatic intensity scaling must be disabled to prevent continuous contrast enhancement throughout each video, making it impossible to compare and analyze videos from the same data set.

3.3. Select the desired intensity scaling by moving the minimum and maximum bars to give the best contrast. Use the histogram tool when selecting the intensity scaling to ensure the broadest dynamic range is captured.

Note: Ensure that the dynamic range is such that the images are not saturated (*i.e.* limit the white regions of the image, which indicate saturation), so that low intensity features are not missed.

3.4. Once the desired scaling has been achieved, right click over the dropdown menu button listed as 'Default (Green)'. Select the option to save the LUT. Save the LUT to a desired location.

3.5. For each other video within the data set, apply the same LUT by right clicking over the 'Default (Green)' drop down menu and select 'Load LUT'. Select the appropriate file to apply consistent intensity scaling to all videos within a dataset.

3.6. Export processed videos by clicking on the 'movie reel' button. Select the desired video format, *e.g.* 'for presentation purposes', which will produce a .mpg file. Press 'Export' and chose file location to save the video file. Snapshots of single frames can be exported by clicking the 'camera' button. It is possible to save a .png, .bmp, or .jpg file. Choose the file destination and press save.

Note: Videos can then be imported into any software for preparation of presentations or further quantification. Labeled bacteria are visualized as green 'blinking' dots in the video. The lung tissue structure will be apparent as ordered fluorescent strands, with alveolar space appearing black.

REPRESENTATIVE RESULTS:

In this study, we have demonstrated a method for the rapid-screening of novel bacteria-specific probes in an *ex vivo* human alveolar lung tissue model of infection using a clinically approved CLE device.

CLE by FCFM is well suited for obtaining structural information within the distal lung, as this region (due to a high abundance of elastin and collagen) is naturally highly fluorescent when excited with a 488 nm laser⁸. Conversely, the alveolar space does not fluoresce, and as such enables high contrast between tissue structure and air space to be visualized (**Figure 1**).

The addition of disease related probes or contrast agents, such as bacteria-specific probes should enable functional information about disease processes to be obtained in real-time. We have previously described the synthesis and initial *in vitro* screening of a library of bacteria-specific probes¹¹; where bacterial-specificity, proteolytic stability, and retention within the bacterial membrane over time was determined. A promising bacteria-specific probe (UBI-10) was identified within the study, as well as one that showed poor retention within the bacterial cell membrane (UBI-3). These were compared to a control of commercial counterstaining (Calcein AM) that was used to label *S. aureus*.

Unstained, Calcein AM, UBI-3, and UBI-10 labeled *S. aureus* were imaged in suspension by FCFM with 100% 488 nm laser power and a frame rate of 12 frames/s (**Figure 2**). Where unlabeled bacteria in PBS were imaged, no fluorescent signal was detectable. This is in contrast to when labeled bacteria were imaged. Where bacterial suspensions with UBI-3 or UBI-10 were imaged by FCFM, it was apparent that the general background fluorescence of the solution was elevated compared to PBS only controls, this is because NBD (the probe fluorophore) does emit a small amount of fluorescence signal in aqueous solution, however, bright punctate dots are clearly visible throughout the solution, without the need for a wash step. This is due to an increase in fluorescence signal emitted from NBD in a polar environment *i.e.*, the bacterial membrane. Calcein AM is not an activatable probe, so a wash step after bacterial staining was required to remove the high fluorescent background of unbound probe in the solution. Like UBI-3 and UBI-10 labeled bacteria, bacteria labeled with Calcein AM were detected in solution by FCFM as bright green punctate dots. As the data are collected in video format, these dots appear to ‘twinkle’ as they move between cores and in-and-out of focus, a characteristic trait of imaging labeled bacteria by this method.

The labeled bacteria were subsequently added to small slices of *ex vivo* human lung tissue and imaged again by FCFM (**Figure 3**). Where only PBS or unlabeled *S. aureus* was added to the lung tissue, only the lung tissue autofluorescent structure was detected (seen as bright green strands of collagen and elastin and dark areas of alveolar space). No punctate dots were detected for these control conditions. Similarly, only lung tissue structure (and no punctate dots) was visualized for the lung tissue condition with *S. aureus* plus UBI-3; indicating that this probe was not retained stably within the bacterial cell membrane *i.e.*, it was washed out and/or is degraded in the presence of native proteolytic enzymes within the lung tissue (as previously demonstrated¹¹).

However, bright punctate dots were visible in both the Calcein AM labeled positive control *S. aureus* sample, and with the most promising bacteria-specific probe (UBI-10) *S. aureus* sample. The ‘twinkling’ dots were visible despite the strong tissue autofluorescence (**Figure 3**). Thus, the results obtained by FCFM were in concurrence with the *in vitro* pre-screening of the panel of bacteria-specific probes by CLSM, and demonstrated a clinically relevant detection method for imaging infections in real-time.

The results presented here demonstrate that the lung is an appropriate organ system for imaging by FCFM due to its distinctive autofluorescence. The bright distinctive structures allow the CLE operator to determine that they are in the alveolar space. These regions, coupled with the dark alveolar air sacs provide the perfect backdrop for imaging fluorescently labeled bacteria with high contrast.

Although the detection of bacteria presented within this study is determined qualitatively by visualizing bright punctate dots, it could be possible to quantify the number of punctate dots frame by frame using a secondary software in order to further characterize probe libraries.

FIGURE LEGENDS:

Figure 1. Static image of human lung tissue autofluorescence. Confocal laser endomicroscopy (CLE) image of *ex vivo* human lung tissue using fibered confocal fluorescence microscopy (FCFM), at 488 nm excitation, 100% laser power, and 12 frames/s. Elastin and collagen are highly fluorescent (false colored green), whereas alveolar space is not, and appears as black regions. This figure has been modified from Akram *et al.*¹¹

Figure 2. Confocal laser endomicroscopy (CLE) image of labeled *S. aureus* in suspension. Fibered confocal fluorescence microscopy (FCFM) was used to image pre-labeled bacteria, at 488 nm excitation, 100% laser power, and 12 frames/s. Labeled bacteria show as highly fluorescent punctate dots (false colored green). This figure has been modified from Akram *et al.*¹¹

Figure 3. Confocal laser endomicroscopy (CLE) image of *ex vivo* human lung tissue with labeled *S. aureus*. Fibered confocal fluorescence microscopy (FCFM) was used to image *ex vivo* human lung tissue and labeled *S. aureus*, at 488 nm excitation, 100% laser power and 12 frames/s. Labeled bacteria show as highly fluorescent punctate dots (false colored green) within the lung tissue sample when labeled with Calcein AM or UBI-10. The highest contrast is observed where bacteria are imaged within the alveolar space. This figure has been modified from Akram *et al.*¹¹

DISCUSSION:

Lower respiratory tract infections account for the second highest burden of disease globally^{12,13}, and a substantial rise in the number of infections attributed to antimicrobial resistant bacteria has been reported¹⁴. Pneumonia remains a common cause for hospitalization. In the ICU, the development of a pneumonia is compounded by diagnostic uncertainty and is associated with an extremely high mortality rate¹⁵. During the onset of pneumonia, bacteria proliferate within the alveolar space of the distal lung, an area that is relatively sterile, with minimal microbiota in health.

This method describes relatively late stage *ex vivo* validation of bacteria-specific optical imaging probes¹¹, but the design, synthesis, and probe evaluation prior to beginning this validation step is imperative, as previously shown¹¹.

CLE is an emerging clinical technique for interrogating disease states *in situ* in real-time. It offers many advantages over traditional techniques for investigating suspected pulmonary pathology, which may involve a biopsy and collection of the lavage fluid. Biopsies are invasive and can cause morbidity and mortality in ventilated patients, and collected lavage fluid is often contaminated with bacteria from the upper airways. The use of CLE in the detection of pneumonia is however somewhat limited due to the poor availability of compatible imaging probes which may provide functional information of disease, despite many concerted efforts¹⁰. Combining CLE with optical agents offers the prospect of diagnosing pneumonia faster and less invasively compared to current standard practice.

The critical steps to this protocol are in the sample preparation and setup of the CLE platform. Obtaining human tissue relevant to the final clinical application is also important, such as human lung tissue as demonstrated within this study. It is necessary to use human tissue because the extent of tissue autofluorescence shows large inter-species variation, and may therefore mislead the sensitivity of the bacteria-probe being imaged. Additionally, obtaining ethics for retrieval and use of human lung tissue is essential. From a technical level, correct cleaning, attachment of the imaging fiber to the imaging LSU platform, and calibration is essential for good resolution and consistent imaging, as is ensuring equivalent numbers of bacteria are added to each lung tissue sample. To further expand the utility of this method for screening panels of probes, repeating the procedure with a range of pathogens, such as those likely to be causative agents of pneumonia is necessary.

The largest limitation of this technique is that the clinically approved CLE device has only one laser (488 nm). Therefore, currently, the selection of fluorophore for probe design is limited for use with this system, though clinically approved single color devices do exist with excitation wavelengths of 660 nm and near-infrared. It is highly desirable to have a second laser line implemented within the same device to enable a probe to be developed with a spectrally distinct fluorophore to improve bacteria-probe sensitivity over the level of tissue autofluorescence. Whilst dual-color CLE devices are under development, they are either not clinically approved and/or their cost is significant¹⁶.

CLE *in vitro* using pathogenic bacteria and *ex vivo* human lung tissue to screen potential probes bridges the gap between conventional *in vitro* techniques such as flow cytometry and CLSM, and clinical utility. This step offers confidence when selecting promising compounds to carry forward to be coupled with clinical CLE imaging; and will provide indication as to whether the tested probe maintains target specificity, or demonstrates any off-target labeling, such as binding directly to tissue, or shows instability with host proteolytic enzymes. It would also be pertinent to add each of the activatable probes directly to samples of human lung tissue plus bacteria, to fully characterize the speed of probe binding and activation in real-time.

We believe that our pipeline for rapidly screening novel bacteria-specific probes to assess their potential for imaging within the distal lung of patients will result in much faster translation to the clinic. This is largely because the bacteria-specific probe could be delivered locally within the lung through a catheter inserted down the working channel of a bronchoscope, meaning that microdose (< 100 µg) amounts could be delivered. Therefore, systemic delivery and biodistribution of the compound is not a concern, as is the case for

many other infection targets within the body, or with nuclear imaging. Moreover, delivering the imaging probe in such a small dose reduces the risk of toxicity related complications (although toxicity screening would be required for translation). Following instillation of the probe, the catheter could then be replaced by the FCFM fiber and the same region of the lung interrogated by CLE, much the same way we have performed within this method. Imaging should be performed rapidly following installation of the probe before the probe washes away to undetectable concentrations.

It is also important to note that screening of disease-identifying probes by this technique should not be limited to bacterial-imaging agents, but could also extend to the validation of probes with alternative targets, such as inflammation. This approach should also be adaptable to other disease locations within the body where imaging via FCFM is permissible.

ACKNOWLEDGEMENTS:

We would like to thank Engineering and Physical Sciences Research Council (EPSRC, United Kingdom) Interdisciplinary Research Collaboration grant EP/K03197X/1, the Department of Health and the Wellcome Trust through the Health Innovation Challenge Fund (HICF). Funding Reference Number: 0510-069.

DISCLOSURES:

KD: Founder Director of Edinburgh Molecular Imaging. Received consultancy from Mauna Kea Technologies as advisor.

MB: Founder Director of Edinburgh Molecular Imaging.

REFERENCES:

- 1 O'Neill, J. Tackling drug-resistant infections globally: final report and recommendations. *London: H M Government/Wellcome Trust*. doi:https://amr-review.org/sites/default/files/160518_Final%20paper_with%20cover.pdf, (2016).
- 2 Caliendo, A. M. *et al.* Better Tests, Better Care: Improved Diagnostics for Infectious Diseases. *Clin. Infect. Dis.* **57** (suppl_3), S139-S170, doi:10.1093/cid/cit578, (2013).
- 3 Zumla, A. *et al.* Rapid point of care diagnostic tests for viral and bacterial respiratory tract infections—needs, advances, and future prospects. *Lancet Infect. Dis.* **14** (11), 1123-1135, doi:[http://dx.doi.org/10.1016/S1473-3099\(14\)70827-8](http://dx.doi.org/10.1016/S1473-3099(14)70827-8), (2014).
- 4 Neumann, H. & Kiesslich, R. in *Yamada's Textbook of Gastroenterology* 2944-2949 (John Wiley & Sons, Ltd, 2015).
- 5 Chauhan, S. S. *et al.* Confocal laser endomicroscopy. *Gastrointest Endosc.* **80** (6), 928-938, doi:<https://doi.org/10.1016/j.gie.2014.06.021>, (2014).
- 6 Goetz, M., Malek, N. P. & Kiesslich, R. Microscopic imaging in endoscopy: endomicroscopy and endocytoscopy. *Nat Rev Gastroenterol Hepatol.* **11** (1), 11-18, doi:10.1038/nrgastro.2013.134, (2014).
- 7 Abbaci, M. *et al.* Confocal laser endomicroscopy for non-invasive head and neck cancer imaging: A comprehensive review. *Oral Oncol.* **50** (8), 711-716, doi:<http://dx.doi.org/10.1016/j.oraloncology.2014.05.002>, (2014).
- 8 Thiberville, L. *et al.* Human in vivo fluorescence microimaging of the alveolar ducts and sacs during bronchoscopy. *Eur Respir J.* **33**, doi:10.1183/09031936.00083708, (2009).
- 9 Thiberville, L. *et al.* Confocal fluorescence endomicroscopy of the human airways. *Proc Am Thorac Soc.* **6** (5), 444-449, doi:10.1513/pats.200902-009AW, (2009).

561 10 Mills, B., Bradley, M. & Dhaliwal, K. Optical imaging of bacterial infections. *Clin. Transl.*
562 *Imaging.* **4** (3), 163-174, doi:10.1007/s40336-016-0180-0, (2016).

563 11 Akram, A. R. *et al.* A labelled-ubiquicidin antimicrobial peptide for immediate in situ
564 optical detection of live bacteria in human alveolar lung tissue. *Chem. Sci.* **6** (12), 6971-
565 6979, doi:10.1039/C5SC00960J, (2015).

566 12 Dickson, R. P., Erb-Downward, J. R. & Huffnagle, G. B. Towards an ecology of the lung:
567 new conceptual models of pulmonary microbiology and pneumonia pathogenesis.
568 *Lancet Respir Med.* **2** (3), 238-246, doi:10.1016/S2213-2600(14)70028-1, (2014).

569 13 Lozano, R. *et al.* Global and regional mortality from 235 causes of death for 20 age
570 groups in 1990 and 2010: a systematic analysis for the Global Burden of Disease Study
571 2010. *Lancet.* **380** (9859), 2095-2128, doi:10.1016/S0140-6736(12)61728-0, (2012).

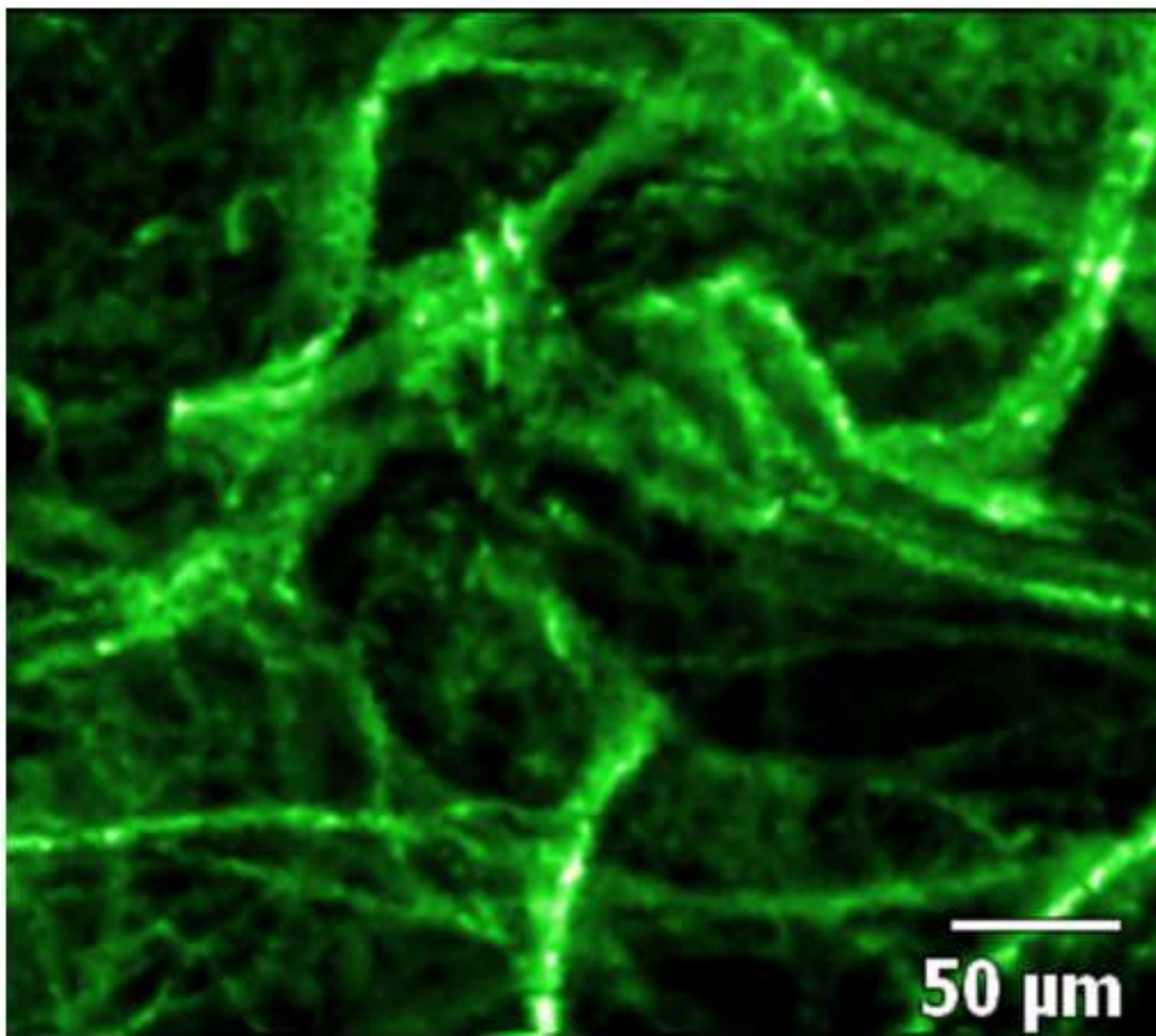
572 14 Magiorakos, A. P. *et al.* The rise of carbapenem resistance in Europe: just the tip of the
573 iceberg? *Antimicrob Resist Infect Control.* **2** (1), 6, doi:10.1186/2047-2994-2-6, (2013).

574 15 Chastre, J. & Fagon, J.-Y. Ventilator-associated Pneumonia. *Am. J. Respir Crit Care Med.*
575 **165** (7), 867-903, doi:10.1164/ajrccm.165.7.2105078, (2002).

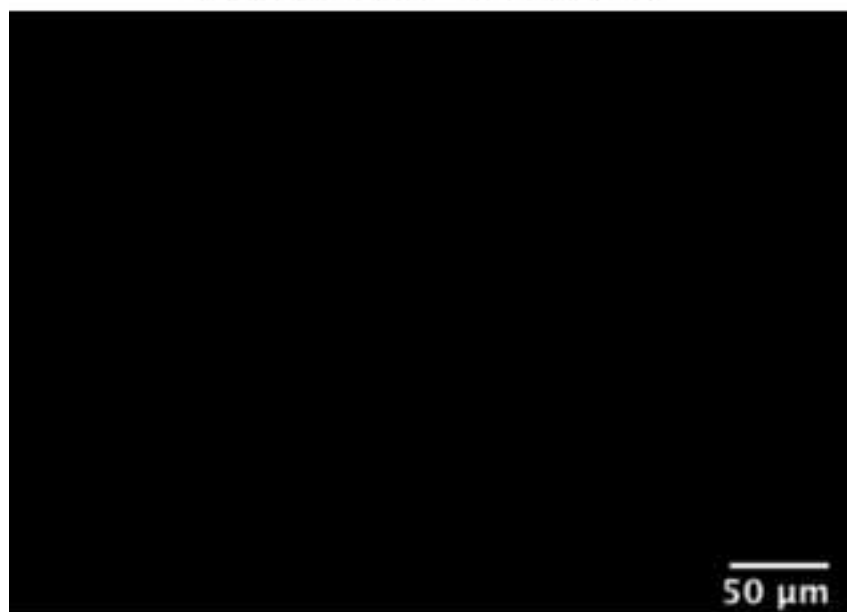
576 16 Krstajić, N. *et al.* Two-color widefield fluorescence microendoscopy enables
577 multiplexed molecular imaging in the alveolar space of human lung tissue. *J Biomed*
578 *Opt.* **21** (4), 046009-046009, doi:10.1117/1.JBO.21.4.046009, (2016).

579

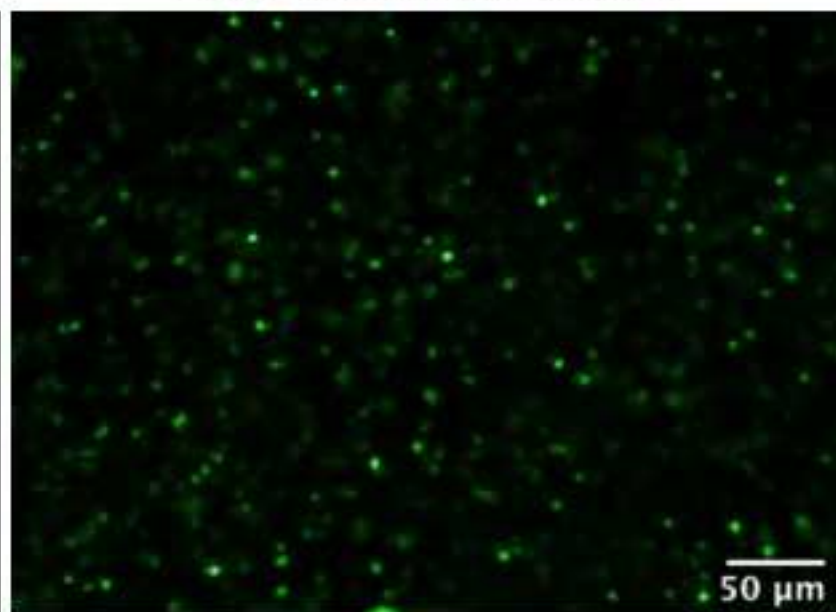
***Ex vivo* human lung autofluorescence**



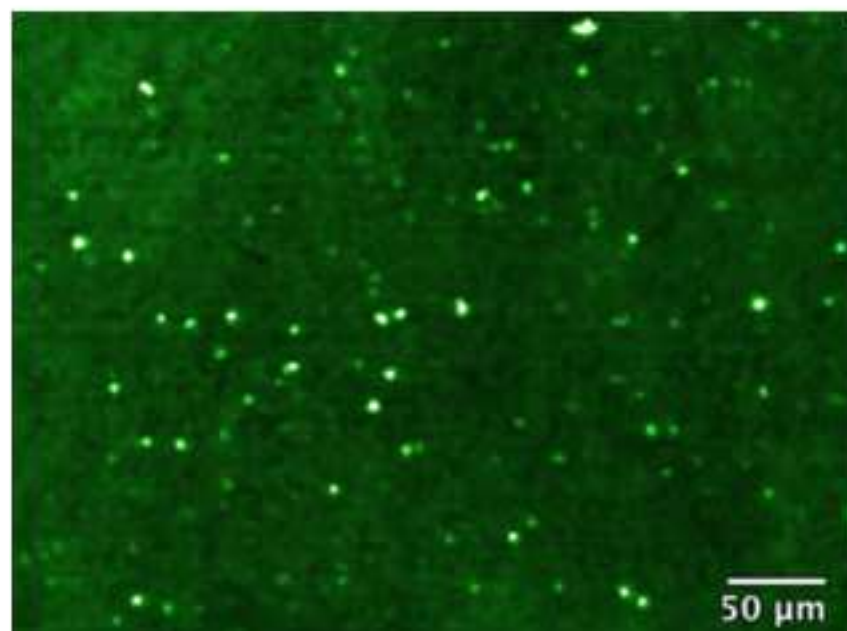
***S. aureus* (unstained)**



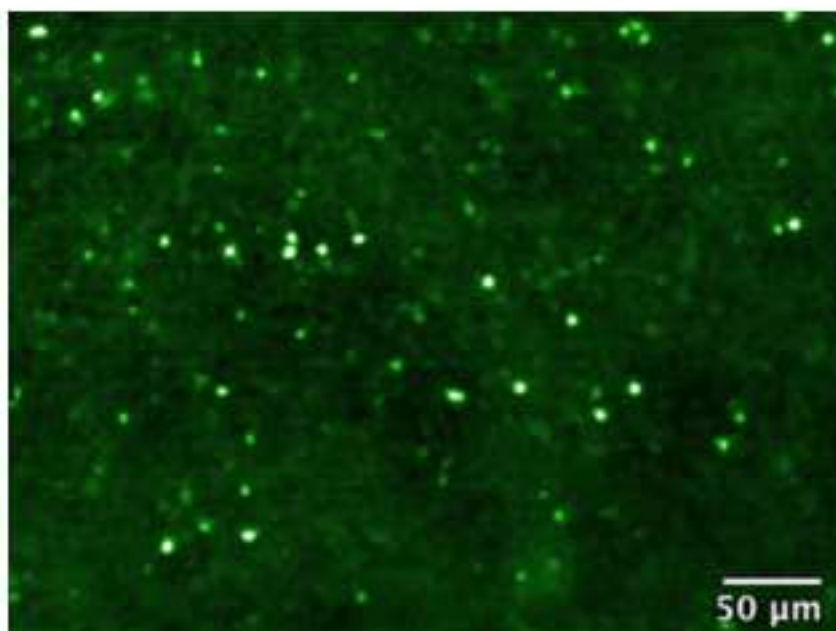
***S. aureus* Calcein AM**

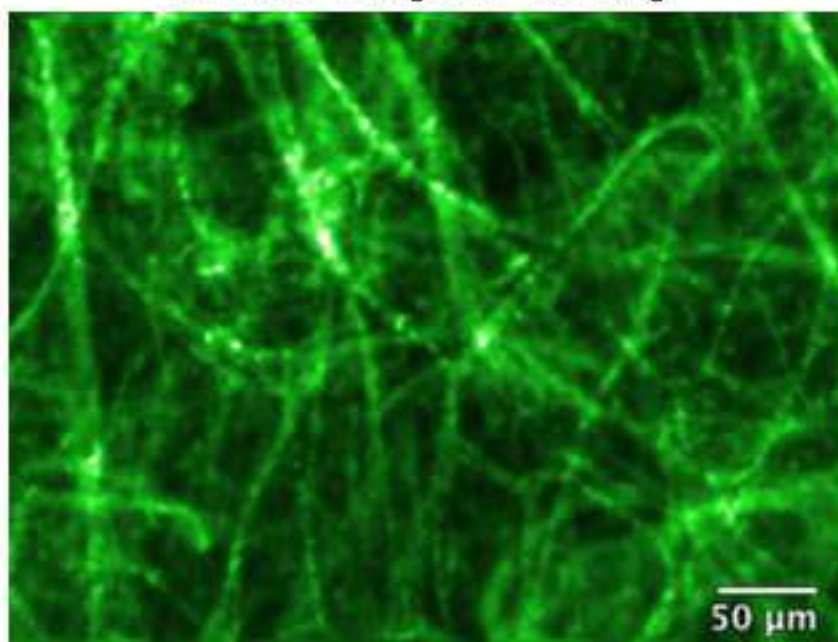
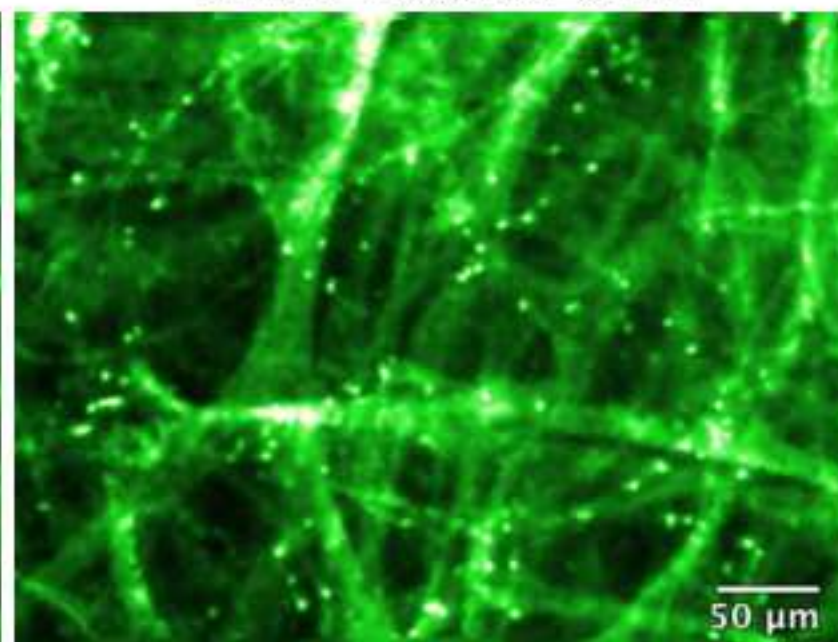
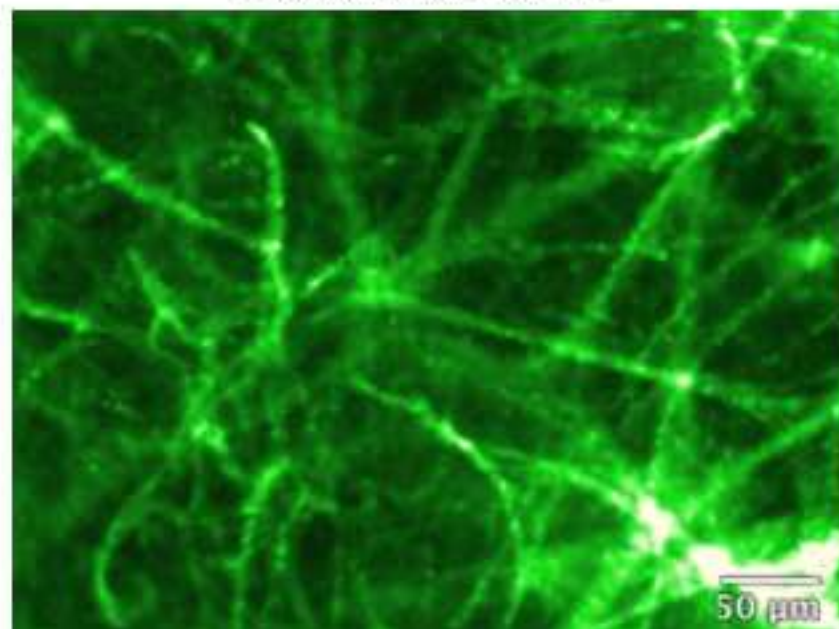
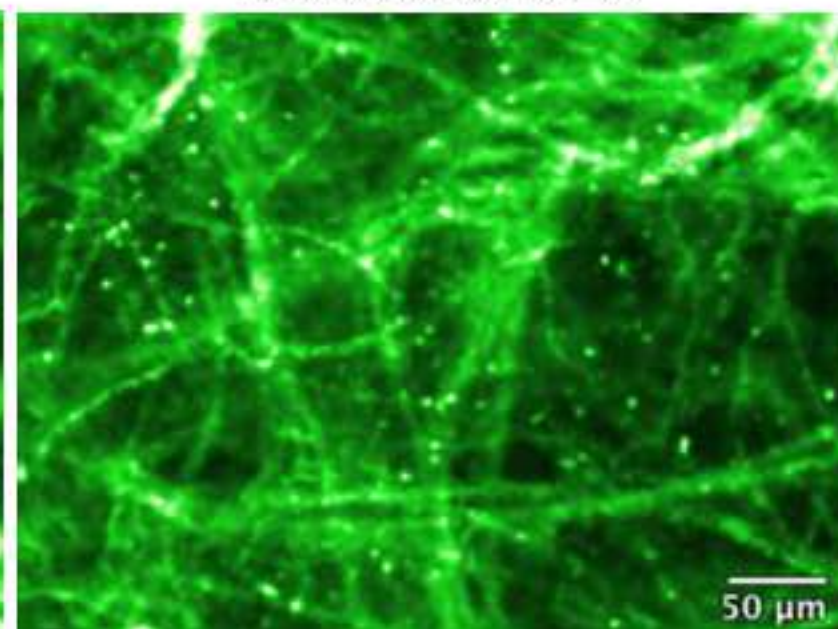


***S. aureus* UBI-3**



***S. aureus* UBI-10**



S. aureus* (unstained)**S. aureus* Calcein AM*****S. aureus* UBI-3*****S. aureus* UBI-10**

Name of Material/ Equipment	Company	Catalog Number
1-14 Microfuge	SciQuip	90616
96-well plate	Corning	3370
Calcein AM	Sigma Aldrich	17783
Cellvizio 488 nm Research CLE	Mauna Kea Technologies	LC-0001-488
CletoP-S	CletoP	14110601
Eppendorf (1.5 mL)	Eppendorf	30120086
Eppendorf Research Plus Pipettes	Fisher Scientific	11568663
Falcon tube (50 mL)	Scientific Lab Supplies	352070
Gibco Phosphate Buffered Saline	Thermo Fisher Scientific	10010023
IC-Viewer	Mauna Kea Technologies	LW-0001
Incu-Shake midi	SciQuip	SQ-4020
Lysogeny Broth	Sigma Aldrich (Miller)	L3522
non-standard research AlveoFlex 488 nm	Mauna Kea Technologies	MP-0002-AF3
Quanti Kit 488 nm	Mauna Kea Technologies	LQ-0005
<i>S. aureus</i> ATCC 25923	ATCC	25923
Semi-micro spectrophotometry cuvette	Sigma Aldrich	C5416-100EA
Thermomixer comfort	Eppendorf	41102422
UV 1101 Biotech photometer	Biochrom WPA	

Comments/Description

Small benchtop microcentrifuge

Assay plate

Commercial fluorescent dye

Confocal laser endomicroscopy device

Fibre cleaner

1.5 mL microfuge tube

Micro pipettes

50 ml centrifugation tube

PBS - wash media

Data collection and processing software for the research CellVizio 488 nm system

Floor standing shaking incubator

LB Growth media for *S. aureus*

Fibred confocal fluorescence microscopy fibre

Calibration kit for the CellVizio 488 system

Bacterial strain used in this study

For spectrophotometry

Benchtop heater with shaking

Spectrophotometer



1 Alewife Center #200
Cambridge, MA 02140
tel. 617.945.9051
www.jove.com

ARTICLE AND VIDEO LICENSE AGREEMENT - UK

Title of Article: Rapid screening of bacteria specific probes for interrogating distal lung infection ...

Author(s): B. Mills, A. Alwan, E. Schofield, M. Bradley, L. Dhatwal

Item 1 (check one box): The Author elects to have the Materials be made available (as described at

<http://www.jove.com/author>) via: ☐ Standard Access ☒ Open Access

Item 2 (check one box):

- ☒ The Author is NOT a United States government employee.
- ☐ The Author is a United States government employee and the Materials were prepared in the course of his or her duties as a United States government employee.
- ☐ The Author is a United States government employee but the Materials were NOT prepared in the course of his or her duties as a United States government employee.

ARTICLE AND VIDEO LICENSE AGREEMENT

1. **Defined Terms.** As used in this Article and Video License Agreement, the following terms shall have the following meanings: "Agreement" means this Article and Video License Agreement; "Article" means the article specified on the last page of this Agreement, including any associated materials such as texts, figures, tables, artwork, abstracts, or summaries contained therein; "Author" means the author who is a signatory to this Agreement; "Collective Work" means a work, such as a periodical issue, anthology or encyclopedia, in which the Materials in their entirety in unmodified form, along with a number of other contributions, constituting separate and independent works in themselves, are assembled into a collective whole; "CRC License" means the Creative Commons Attribution 3.0 Agreement (also known as CC-BY), the terms and conditions of which can be found at: <http://creativecommons.org/licenses/by/3.0/us/legalcode>;

"Derivative Work" means a work based upon the Materials or upon the Materials and other pre-existing works, such as a translation, musical arrangement, dramatization, fictionalization, motion picture version, sound recording, art reproduction, abridgment, condensation, or any other form in which the Materials may be recast, transformed, or adapted; "Institution" means the institution, listed on the last page of this Agreement, by which the Author was employed at the time of the creation of the Materials; "JoVE" means MyJoVE Corporation, a Massachusetts corporation and the publisher of *The Journal of Visualized Experiments*;

"Materials" means the Article and / or the Video; "Parties" means the Author and JoVE; "Video" means any video(s) made by the Author, alone or in conjunction with any other parties, or by JoVE or its affiliates or agents, individually or in collaboration with the Author or any other parties, incorporating all or any portion of the Article, and in which the Author may or may not appear.

2. **Background.** The Author, who is the author of the Article, in order to ensure the dissemination and protection of the Article, desires to have the JoVE publish the Article and create and transmit videos based on the Article. In furtherance of such goals, the Parties desire to memorialize in this Agreement the respective rights of each Party in and to the Article and the Video.

3. **Grant of Rights in Article.** In consideration of JoVE agreeing to publish the Article, the Author hereby grants to JoVE, subject to Sections 4 and 7 below, the exclusive, royalty-free, perpetual (for the full term of copyright in the Article, including any extensions thereto) license (a) to publish, reproduce, distribute, display and store the Article in all forms, formats and media whether now known or hereafter developed (including without limitation in print, digital and electronic form) throughout the world, (b) to translate the Article into other languages, create adaptations, summaries or extracts of the Article or other Derivative Works (including, without limitation, the Video) or Collective Works based on all or any portion of the Article and exercise all of the rights set forth in (a) above in such translations, adaptations, summaries, extracts, Derivative Works or Collective Works and (c) to license others to do any or all of the above. The foregoing rights may be exercised in all media and formats, whether now known or hereafter devised, and include the right to make such modifications as are technically necessary to exercise the rights in other media and formats. If the "Open Access" box has been checked in Item 1 above, JoVE and the Author hereby grant to the public all such rights in the Article as provided in, but subject to all limitations and requirements set forth in, the CRC License.

4. **Retention of Rights in Article.** Notwithstanding the exclusive license granted to JoVE in Section 3 above, the

Author shall, with respect to the Article, retain the non-exclusive right to use all or part of the Article for the non-commercial purpose of giving lectures, presentations or teaching classes, and to post a copy of the Article on the

Institution's website or the Author's personal website, in each case provided that a link to the Article on the JoVE website is provided and notice of JoVE's copyright in the Article is included. All non-copyright intellectual property rights in and to the Article, such as patent rights, shall remain with the Author.

5. Grant of Rights in Video – Standard Access. This Section 5 applies if the "Standard Access" box has been checked in Item 1 above or if no box has been checked in Item 1 above. In consideration of JoVE agreeing to produce, display or otherwise assist with the Video, the Author hereby acknowledges and agrees that, Subject to Section 7 below, JoVE is and shall be the sole and exclusive owner of all rights of any nature, including, without limitation, all copyrights, in and to the Video. To the extent that, by law, the Author is deemed, now or at any time in the future, to have any rights of any nature in or to the Video, the Author hereby disclaims all such rights and transfers all such rights to JoVE.

6. Grant of Rights in Video – Open Access. This Section 6 applies only if the "Open Access" box has been checked in Item 1 above. In consideration of JoVE agreeing to produce, display or otherwise assist with the Video, the Author hereby grants to JoVE, subject to Section 7 below, the exclusive, royalty-free, perpetual (for the full term of copyright in the Article, including any extensions thereto) license (a) to publish, reproduce, distribute, display and store the Video in all forms, formats and media whether now known or hereafter developed (including without limitation in print, digital and electronic form) throughout the world, (b) to translate the Video into other languages, create adaptations, summaries or extracts of the Video or other Derivative Works or Collective Works based on all or any portion of the Video and exercise all of the rights set forth in (a) above in such translations, adaptations, summaries, extracts, Derivative Works or Collective Works and (c) to license others to do any or all of the above. The foregoing rights may be exercised in all media and formats, whether now known or hereafter devised, and include the right to make such modifications as are technically necessary to exercise the rights in other media and formats.

7. Government Employees. If the Author is a United States government employee and the Article was prepared in the course of his or her duties as a United States government employee, as indicated in Item 2 above, and any of the licenses or grants granted by the Author hereunder exceed the scope of the 17 U.S.C. 403, then the rights granted hereunder shall be limited to the maximum rights permitted under such statute. In such case, all provisions contained herein that are not in conflict with such statute shall remain in full force and effect, and all provisions contained herein that do so conflict

shall be deemed to be amended so as to provide to JoVE the maximum rights permissible within such statute.

8. Likeness, Privacy, Personality. The Author hereby grants JoVE the right to use the Author's name, voice, likeness, picture, photograph, image, biography and performance in any way, commercial or otherwise, in connection with the Materials and the sale, promotion and distribution thereof. The Author hereby waives any and all rights he or she may have, relating to his or her appearance in the Video or otherwise relating to the Materials, under all applicable privacy, likeness, personality or similar laws.

9. Author Warranties. The Author represents and warrants that the Article is original, that it has not been published, that the copyright interest is owned by the Author (or, if more than one author is listed at the beginning of this Agreement, by such authors collectively) and has not been assigned, licensed, or otherwise transferred to any other party. The Author represents and warrants that the author(s) listed at the top of this Agreement are the only authors of the Materials. If more than one author is listed at the top of this Agreement and if any such author has not entered into a separate Article and Video License Agreement with JoVE relating to the Materials, the Author represents and warrants that the Author has been authorized by each of the other such authors to execute this Agreement on his or her behalf and to bind him or her with respect to the terms of this Agreement as if each of them had been a party hereto as an Author. The Author warrants that the use, reproduction, distribution, public or private performance or display, and/or modification of all or any portion of the Materials does not and will not violate, infringe and/or misappropriate the patent, trademark, intellectual property or other rights of any third party. The Author represents and warrants that it has and will continue to comply with all government, institutional and other regulations, including, without limitation all institutional, laboratory, hospital, ethical, human and animal treatment, privacy, and all other rules, regulations, laws, procedures or guidelines, applicable to the Materials, and that all research involving human and animal subjects has been approved by the Author's relevant institutional review board.

10. JoVE Discretion. If the Author requests the assistance of JoVE in producing the Video in the Author's facility, the Author shall ensure that the presence of JoVE employees, agents or independent contractors is in accordance with the relevant regulations of the Author's institution. If more than one author is listed at the beginning of this Agreement, JoVE may, in its sole discretion, elect not take any action with respect to the Article until such time as it has received complete, executed Article and Video License Agreements from each such author. JoVE reserves the right, in its absolute and sole discretion and without giving any reason therefore, to accept or decline any work submitted to JoVE. JoVE and its employees, agents and independent contractors shall have full, unfettered access to the facilities of the Author or of the Author's institution as necessary to make the Video, whether actually published or not. JoVE has sole discretion as to the method of making and publishing the Materials, including,

without limitation, to all decisions regarding editing, lighting, filming, timing of publication, if any, length, quality, content and the like.

11. Indemnification. The Author agrees to indemnify JoVE and/or its successors and assigns from and against any and all claims, costs, and expenses, including attorney's fees, arising out of any breach of any warranty or other representations contained herein. The Author further agrees to indemnify and hold harmless JoVE from and against any and all claims, costs, and expenses, including attorney's fees, resulting from the breach by the Author of any representation or warranty contained herein or from allegations or instances of violation of intellectual property rights, damage to the Author's or the Author's institution's facilities, fraud, libel, defamation, research, equipment, experiments, property damage, personal injury, violations of institutional, laboratory, hospital, ethical, human and animal treatment, privacy or other rules, regulations, laws, procedures or guidelines, liabilities and other losses or damages related in any way to the submission of work to JoVE, making of videos by JoVE, or publication in JoVE or elsewhere by JoVE. The Author shall be responsible for, and shall hold JoVE harmless from, damages caused by lack of sterilization, lack of cleanliness or by contamination due to the making of a video by JoVE its employees, agents or independent contractors. All sterilization, cleanliness or decontamination procedures shall be solely the responsibility of the Author and shall be undertaken at the Author's expense. All indemnifications provided herein shall include JoVE's attorney's fees and costs related to said losses or

damages. Such indemnification and holding harmless shall include such losses or damages incurred by, or in connection with, acts or omissions of JoVE, its employees, agents or independent contractors.

12. Fees. To cover the cost incurred for publication, JoVE must receive payment before production and publication the Materials. Payment is due in 21 days of invoice. Should the Materials not be published due to an editorial or production decision, these funds will be returned to the Author. Withdrawal by the Author of any submitted Materials after final peer review approval will result in a US\$1,200 fee to cover pre-production expenses incurred by JoVE. If payment is not received by the completion of filming, production and publication of the Materials will be suspended until payment is received.

13. Transfer, Governing Law. This Agreement may be assigned by JoVE and shall inure to the benefits of any of JoVE's successors and assignees. This Agreement shall be governed and construed by the internal laws of the Commonwealth of Massachusetts without giving effect to any conflict of law provision thereunder. This Agreement may be executed in counterparts, each of which shall be deemed an original, but all of which together shall be deemed to be one and the same agreement. A signed copy of this Agreement delivered by facsimile, e-mail or other means of electronic transmission shall be deemed to have the same legal effect as delivery of an original signed copy of this Agreement.

A signed copy of this document must be sent with all new submissions. Only one Agreement required per submission.

AUTHOR:

Name:

Department:

Institution:

Article Title:

Signature:

Date:

Please submit a signed and dated copy of this license by one of the following three methods:

- 1) Upload a scanned copy as a PDF to the JoVE submission site upon manuscript submission (preferred);
- 2) Fax the document to +1.866.381.2236; or
- 3) Mail the document to JoVE / Attn: JoVE Editorial / 1 Alewife Center Suite 200 / Cambridge, MA 02140

For questions, please email editorial@jove.com or call +1.617.945.9051.

MS # (internal use):

Dear Constantinos Katevatis,

Thank you for your editorial comments for our 'Rapid screening of bacteria-specific probes for interrogating distal lung infection in the intensive care unit by confocal laser endomicroscopy' manuscript.

We have taken every effort to address each of your comments, and have included all track changes in the revised manuscript. Our responses to each of your points are detailed below.

We look forward to hearing from you.

Best wishes

Dr Bethany Mills

Research Fellow in Optical Imaging

PROTEUS Hub, Room E2.32

University of Edinburgh

Queens Medical Research Institute

47 Little France Crescent

Edinburgh

EH16 4TJ

Tel: [+44 \(0\)131 242 9180](tel:+441312429180)

Website: <http://www.proteus.ac.uk>

Twitter: <https://twitter.com/edPROTEUS>

Facebook: EPSRC Proteus | Facebook

-
- Please review and address the revisions and comments made on the most current manuscript file.

[These have been addressed individually within the manuscript file.](#)

- The language in the manuscript is not publication grade. Please take the time to proofread or send it for copyediting.

[The manuscript has now undergone further proofreading to correct for grammatical errors.](#)

- Please use American-English.

[American English has now been implemented.](#)

- Please add the following to the Table of Materials: FCFM imaging fiber software, data analysis software, etc.

This software was listed in the original table. It is called 'IC-viewer'.

- After providing the necessary details, please highlight up to 2.75 pages of the protocol that you would like to film. Please note that complete sentences must be highlighted.

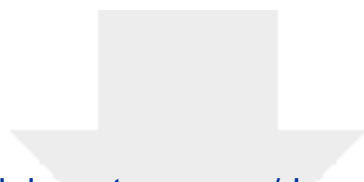
The highlighted text is less than 2.75 pages.

- Figure 1 – Please remove commercial language 'Cellvizio'.

The commercial language has been removed.

- Figure 1/2/3 – Please provide higher resolution images.

We have provided figures at the highest resolution possible.



[Click here to access/download](#)

Supplemental File

Permission to reuse figures.docx

