

Journal of Visualized Experiments

Studying cell cycle-regulated gene expression by two complementary cell synchronization protocols

--Manuscript Draft--

| | |
|--|--|
| Manuscript Number: | JoVE55745R1 |
| Full Title: | Studying cell cycle-regulated gene expression by two complementary cell synchronization protocols |
| Article Type: | Invited Methods Article - JoVE Produced Video |
| Keywords: | Cell cycle; cell synchronization; gene regulation; mRNA expression; E2F; nocodazole; hydroxyurea; genotoxic agents |
| Manuscript Classifications: | 4.13.444: Nucleic Acids; 4.27: Chemical Actions and Uses; 95.51.24: life sciences; 95.51.6: biochemistry |
| Corresponding Author: | Ana Zubiaga, PhD Universidad del Pais Vasco Leioa, SPAIN |
| Corresponding Author Secondary Information: | |
| Corresponding Author E-Mail: | ana.zubiaga@ehu.es |
| Corresponding Author's Institution: | Universidad del Pais Vasco |
| Corresponding Author's Secondary Institution: | |
| First Author: | Aintzane Apraiz |
| First Author Secondary Information: | |
| Other Authors: | Aintzane Apraiz Jone Mitxelena |
| Order of Authors Secondary Information: | |
| Abstract: | <p>The gene expression program of the cell cycle represents a critical step for understanding cell cycle-dependent processes and their role in diseases such as cancer. Cell cycle-regulated gene expression analysis depends on cell synchronization into specific phases. Here we describe a method utilizing two complementary synchronization protocols that is commonly used for studying periodic variation of gene expression during the cell cycle. Both procedures are based on transiently blocking the cell cycle in one defined point. The synchronization protocol by hydroxyurea (HU) treatment leads to cellular arrest in late G1/early S phase, and release from HU-mediated arrest provides a cellular population uniformly progressing through S and G2/M. The synchronization protocol by thymidine and nocodazole (Thy-Noc) treatment blocks cells in early mitosis, and release from Thy-Noc mediated arrest provides a synchronized cellular population suitable for G1 phase and S phase-entry studies. Application of both procedures requires monitoring of the cell cycle distribution profiles, which is typically performed after propidium iodide (PI) staining of the cells and flow cytometry-mediated analysis of DNA content. We show that the combined use of two synchronization protocols is a robust approach to clearly determine the transcriptional profiles of genes that are differentially regulated in the cell cycle (i.e. E2F1 and E2F7), and consequently to have a better understanding of their role in cell cycle processes. Furthermore, we show that this approach is useful for the study of mechanisms underlying drug-based therapies (i.e. mitomycin C, an anticancer agent), because it allows to discriminate genes that are responsive to the genotoxic agent from those solely affected by cell cycle perturbations imposed by the agent.</p> |
| Author Comments: | |
| Additional Information: | |

| Question | Response |
|--|----------|
| If this article needs to be "in-press" by a certain date, please indicate the date below and explain in your cover letter. | |

TITLE:

Studying cell cycle-regulated gene expression by two complementary cell synchronization protocols

AUTHORS:

Apraiz, Aintzane*

Department of Cell Biology and Histology

University of the Basque Country, UPV/EHU

Leioa, Spain

aintzane.apraiz@ehu.es

Mitxelena, Jone*

Department of Genetics, Physical Anthropology and Animal Physiology

University of the Basque Country, UPV/EHU

Leioa, Spain

Present address:

Department of Molecular Mechanisms of Disease

University of Zurich

Zurich, Switzerland

jone.michelena@dmmd.uzh.ch

Zubiaga, Ana M.

Department of Genetics, Physical Anthropology and Animal Physiology

University of the Basque Country, UPV/EHU

48940 Leioa, Spain

ana.zubiaga@ehu.es

* Shared first authorship

CORRESPONDING AUTHOR:

Zubiaga, Ana M.

ana.zubiaga@ehu.es

KEYWORDS:

Cell cycle, cell synchronization, gene regulation, mRNA expression, E2F, nocodazole, hydroxyurea, genotoxic agents

SHORT ABSTRACT:

We report two cell synchronization protocols that provide a context for studying events related to specific phases of the cell cycle. We show that this approach is useful for analyzing the regulation of specific genes in an unperturbed cell cycle or upon exposure to agents affecting the cell cycle.

LONG ABSTRACT:

The gene expression program of the cell cycle represents a critical step for understanding cell cycle-dependent processes and their role in diseases such as cancer. Cell cycle-regulated gene expression analysis depends on cell synchronization into specific phases. Here we describe a method utilizing two complementary synchronization protocols that is commonly used for studying periodic variation of gene expression during the cell cycle. Both procedures are based on transiently blocking the cell cycle in one defined point. The synchronization protocol by hydroxyurea (HU) treatment leads to cellular arrest in late G1/early S phase, and release from HU-mediated arrest provides a cellular population uniformly progressing through S and G2/M. The synchronization protocol by thymidine and nocodazole (Thy-Noc) treatment blocks cells in early mitosis, and release from Thy-Noc mediated arrest provides a synchronized cellular population suitable for G1 phase and S phase-entry studies. Application of both procedures requires monitoring of the cell cycle distribution profiles, which is typically performed after propidium iodide (PI) staining of the cells and flow cytometry-mediated analysis of DNA content. We show that the combined use of two synchronization protocols is a robust approach to clearly determine the transcriptional profiles of genes that are differentially regulated in the cell cycle (i.e. E2F1 and E2F7), and consequently to have a better understanding of their role in cell cycle processes. Furthermore, we show that this approach is useful for the study of mechanisms underlying drug-based therapies (i.e. mitomycin C, an anticancer agent), because it allows to discriminate genes that are responsive to the genotoxic agent from those solely affected by cell cycle perturbations imposed by the agent.

INTRODUCTION:

Transition through all the phases of the cell cycle is coupled to a tightly regulated gene expression program. This coordinated “on and off” of gene transcription throughout the cell cycle is believed to be under the control of complex transcriptional regulatory systems, regulating not just the timing but also the levels of gene expression. Deregulation of key cell cycle components is known to contribute to the development of several diseases and is a well-established hallmark of tumorigenesis^{1,2}. Genome-wide transcriptomic analyses carried out in yeast and mammalian cells have revealed that a large number of genes exhibit periodic gene expression patterns in the cell cycle, suggesting that transcriptional fluctuation during the cell cycle is a reflection of the temporal requirement of a given gene product in a precise phase³⁻⁵.

A major task in the study of cell cycle-regulated gene expression is the synchronization of cells into specific cell cycle phases. Cell synchronization helps to interpret association of a gene expression pattern to a particular cell cycle phase transition, and it has led to a better understanding of the regulation and function of numerous genes. Cell synchronization is also important for studying the mechanism of action of anticancer drugs, as chemotherapeutic agents are known to affect both gene expression as well as cell cycle kinetics^{6,7}. Nevertheless, it is often difficult to determine whether gene expression differences resulting from treatment with these agents are a direct response to the treatment or are merely the consequence of changes in cell cycle profiles. To distinguish between these possibilities, gene expression should be analyzed in cells that have been synchronized prior to addition of the chemotherapeutic drug.

With the exception of some primary cells such as freshly isolated lymphoid cells -which constitute a homogeneous cell population synchronized in G0⁸-, *in vitro* established cell lines grow asynchronously in culture. Under regular growth conditions, these asynchronously cycling cells are found in all phases of the cell cycle but, preferentially in G1⁹. Therefore, this context does not provide an optimal scenario for functional or gene expression analyses in a specific cell cycle phase (e.g. G1, S etc.). Non-transformed immortalized cell lines (e.g. fibroblasts) can be synchronized with so-called *physiological methods*¹⁰. These methods are based on the retained primary cell features of non-transformed cells, such as cell-contact inhibition and growth factor dependency in order to continue cycling. Removal of serum in combination with contact inhibition renders non-transformed cells arrested at G0/G1. However, synchronized cell cycle entry and progression often requires subculture, which also involves artificial detachment of the cells and re-plating¹⁰. Most importantly, this method is not suitable for synchronization of transformed cell lines, the vast majority of established cell lines presently in use, characterized for lacking cell contact-mediated growth inhibition or response to growth factor withdrawal. Thus, it is clear that alternative methods are required for efficient cell synchronization in specific phases of the cell cycle. In general terms, the most frequently used synchronization methods are based on transient chemical or pharmacological inhibition of one defined point of the cell cycle, typically DNA synthesis or mitotic spindle formation. Inhibition of DNA synthesis synchronizes cells by arresting them in late G1 or early S phase. This can be achieved by the addition of compounds such as mimosine, an inhibitor of nucleotide biosynthesis^{11,12}, aphidicolin, an inhibitor of DNA polymerases^{13,14}, hydroxyurea, an inhibitor of ribonucleotide reductase^{15,16} or by excess amounts of thymidine^{17,18}. On the other hand, inhibitors of microtubule polymerization, such as colchicine or nocodazole, are able to block mitotic spindle formation leading to cell synchronization at early M phase¹⁹⁻²¹.

In this work we describe a method involving two complementary synchronization protocols based on transient chemical inhibition for studying the expression of cell cycle-regulated genes at the mRNA level. This method is fundamental for defining the role of cell cycle genes in specific cell cycle processes. Furthermore, it provides a general frame for studying the impact of anticancer treatments in order to accurately detect drug responsive genes and to minimize misinterpretations derived from perturbations in cell cycle progression generated by these drugs.

PROTOCOL:

1. **Cellular synchronization, release and monitoring of cell cycle progression**
 - 1.1. **Thymidine- and nocodazole-based (Thy-Noc) synchronization and release of U2OS cells from Mitosis**
 - 1.1.1. Prepare required cell culture medium. U2OS cells are routinely grown in DMEM-GlutaMAX medium complemented with 10% (vol/vol) FBS (optional: 1% penicillin/streptomycin). Perform all the medium preparation and manipulation under sterile conditions and warm up complemented medium (from now on referred to as “complete medium”) to 37 °C prior to use.

1.1.2. Seed 2×10^6 U2OS cells (growing at 50% confluency) per 100 mm dish in 10 mL complete culture medium. In order to calculate the number of dishes needed, take into account that each 100 mm dish typically provides enough mitotic cells to re-plate approximately 5 wells of a 6-well plate ($0.2\text{--}0.25 \times 10^6$ cells/well) (see Figure 1B). Two wells per selected time point are required in the experiment (1 well for RNA extraction and 1 well for cell cycle monitoring). Additionally, a third well may be collected per time point for protein analysis.

NOTE: Plate cells in the evening (around 7 pm) so that subsequent steps can be carried out during working hours the following days. Include 2 additional wells of asynchronously growing cells to define FACS analysis compensation settings.

1.1.3. Let cells attach by incubating 100 mm dishes at 37 °C in a humidified atmosphere with 5% CO₂ for 24 h.

1.1.4. For the thymidine block, prepare a 200 mM thymidine stock solution by dissolving 145.2 mg thymidine powder in 3 mL H₂O (or equivalent amounts) and sterilize the solution by filtration through a 0.2 µm pore size filter. Slight warming might help dissolve thymidine. Add 100 µL of the freshly prepared 200 mM stock to each 100 mm culture dish (final concentration 2 mM). Incubate cells with thymidine for 20 h at 37 °C in a humidified atmosphere with 5% CO₂.

NOTE: Treat cells in the evening (around 7 pm), to have time to perform both thymidine release and nocodazole block the following day.

1.1.5. To release from the thymidine block, remove thymidine containing growth medium in the afternoon of the following day (3 pm); wash cells twice with pre-warmed 1X PBS and add 10 mL of complete medium to each 100 mm dish. Incubate cells for 5 h at 37 °C in a humidified atmosphere with 5% CO₂.

1.1.6. For mitotic cell arrest, add nocodazole to a final concentration of 50 ng/mL (8 µM). Prepare a stock solution by dissolving nocodazole powder in DMSO (e.g. 5 mg/mL) and store frozen at -20 °C. Incubate cells with nocodazole for no longer than 10-11 h at 37 °C in a humidified atmosphere with 5% CO₂.

1.1.7. Release from nocodazole-mediated arrest in early M phase (mitotic shake-off) and collection of samples at several time points (starting at 6-7 am).

1.1.7.1. Detach rounded (mitotic) cells by shaking each plate and gently pipetting nocodazole-containing growth medium. Collect medium with detached cells from each 100 mm plate into 50 mL sterile tubes, centrifuge (300 x g, 5 min, room temperature (RT)) and wash cells twice by adding 1X PBS followed by centrifugation. Use of cold PBS or PBS plus nocodazole is recommended to avoid mitotic slippage (see Discussion section).

1.1.7.2. Resuspend mitotic cells gathered from each 100 mm plate in 10 mL of complete medium. Save 2 mL for RNA extraction and 2 mL for FACS analysis for the 0 h time point

(approximately $0.2\text{-}0.25 \times 10^6$ cells per sample).

1.1.7.3. Re-plate remaining mitotic cells for subsequent time points in 6-well plates (2 mL/well ; $0.2\text{-}0.25 \times 10^6$ cells/well).

NOTE: Remember that 2 wells are required per selected time point (1 for RNA and 1 for FACS analysis).

1.1.8. Collect samples at selected time points. Every 1.5 to 3 h is recommended in order to obtain an adequate profile of the cell cycle progression.

1.1.8.1. For RNA extraction, remove medium, rinse well with 2 mL pre-warm 1X PBS and add 1 mL trypsin reagent in the well (perform this last step in a safety cabinet for chemicals). Pipette up and down to detach and lyse cells, transfer cell lysate to a 1.5 mL microcentrifuge tube, incubate 5 min at RT and store tube at -80°C until further use.

1.1.8.2. For FACS analysis, rinse well with 2 mL pre-warm 1X PBS, add pre-warmed Trypsin-EDTA solution (0.3 mL/well) to detach cells, block Trypsin-EDTA by adding 1 mL complete medium and collect each sample in a separate 15 mL tube.

1.1.8.2.1. Centrifuge cells ($300 \times g$, 5 min, RT), save cellular pellet and discard supernatant. In order to fix cells, resuspend cells in 1 mL of chilled 70% (v/v) ethanol in 1X PBS by gently vortexing tubes, and place them on ice for approximately 15 min prior to storing at 4°C or to staining for further analysis by FACS (described in steps 1.4-1.5).

1.2. HU-based synchronization and release of U2OS cells from G1/S boundary

1.2.1. Prepare complete cell culture medium as described in step 1.1.

1.2.2. Seed 0.25×10^6 U2OS cells (growing at 50% confluency) per well in 6 well plates ($2\text{ mL complete culture medium per well}$). In order to calculate the number of wells needed for the experiment, take into account that 2 wells will be required per selected time point (1 well for RNA extraction and 1 well for cell cycle monitoring) and that 2 additional wells of asynchronously growing cells are needed to define FACS analysis compensation settings.

1.2.3. Let cells attach by incubating 6-well plates overnight (O/N) at 37°C in a humidified atmosphere with 5% CO_2 .

1.2.4. Remove complete medium from wells the following morning and add 2 mL of pre-warmed FBS-free DMEM-GlutaMAX medium per well. Incubate cells for an additional 24 h at 37°C in a humidified atmosphere with 5% CO_2 .

NOTE: Perform this step in all wells except for 2 (those saved to define FACS settings). Serum withdrawal step can be omitted if efficient synchronization is achieved by simply incubating cells with HU.

221
222 1.2.5. **G1/S cell cycle arrest with HU.**

223 1.2.5.1. Prepare fresh HU stock solution (500 mM) prior to each use. Add 2 mL H₂O to
224 76.06 mg of HU powder and mix until thoroughly dissolved. Sterilize the solution by filtration
225 through a 0.2 µm pore size filter. Mix 50 mL of complete medium with 400 µL of filter-sterilized
226 HU stock solution for a final HU concentration of 4 mM.

227
228 1.2.5.2. Remove medium from all wells except from the 2 wells needed for defining FACS
229 settings and replace with a freshly prepared 4 mM HU-containing complete medium (2 mL/well).

230
231 1.2.5.3. Incubate cells for 24 h in HU-containing medium at 37 °C in a humidified
232 atmosphere with 5% CO₂.

233
234 1.2.6. Release of cells from HU-mediated arrest. Remove HU-containing medium from wells
235 and rinse wells twice with pre-warmed 1X PBS (2 mL each time). Add 2 mL of complete medium
236 per well. Collect 2 samples for the 0 h time point (1 for RNA extraction and 1 for cell cycle arrest
237 verification by FACS) as well as 2 samples saved for FACS settings. Place remaining wells in the
238 incubator.

239
240 1.2.7. Collect samples every 1.5 to 3 h in order to obtain an adequate distribution of cell cycle
241 progression. At each time point, perform sample processing (for RNA extraction and for FACS
242 analysis) as described in 1.1.8.1-1.1.8.2.

243
244 1.3. **Treatment with DNA damaging agents**

245 NOTE: Whenever the aim is to elucidate the effect of a compound (e.g. DNA damaging agents) in
246 cell cycle events, any of the previously described synchronization methods can be combined
247 with treatment of cells with the genotoxic agent. In order to select the synchronization method,
248 it is important to consider the phase of the cell cycle that we would like to analyze. In general,
249 Thy-Noc procedure may be suitable to study the effect of a compound in G1 phase or S phase
250 entry while HU-mediated synchronization may be more suitable to study the impact in S to G2
251 phases or in the entry to mitosis.

252
253 1.3.1. **Analysis of the effect of genotoxic agents in G1 phase or S phase entry**

254 1.3.1.1. Synchronize cells as described in 1.1.2. to 1.1.6.

255
256 1.3.1.2. Release cells from nocodazole and re-plate them as described in 1.1.7. Incubate
257 them at 37 °C in a humidified atmosphere with 5% CO₂ for 3 h to let them attach prior to adding
258 agent (required incubation period may vary depending on the cell line).

259
260 1.3.1.3. Add agent and collect samples as previously described in 1.1.8.

261
262 1.3.2. **Analysis of the effect of genotoxic agents in S-G2 phases or M entry**

263 1.3.2.1. Synchronize cells as described in 1.2.2. to 1.2.5.

1.3.2.2. Release cells from HU as described in 1.2.6. and add agent straightaway.

1.3.2.3. Collect samples as previously described in 1.8.

1.4. **Monitoring of cell synchronization and progression through the cell cycle by propidium iodide (PI) staining and FACS analysis**

NOTE: Samples collected at all time points together with those required to define FACS settings can be stored at 4 °C once they have been fixed (as mentioned in 1.1.8.2). Perform staining with PI solution followed by FACS analysis for all the samples of the experiment simultaneously. PI intercalates into the major groove of double-stranded DNA producing a highly fluorescent signal when excited at 535 nm with a broad emission peak around 600 nm. Since PI can also bind to double-stranded RNA, it is necessary to treat the cells with RNase for optimal DNA resolution.

1.4.1. Prepare freshly made PI staining solution by dissolving (e.g. 5 mg/mL) in PBS and store the stock solution at 4 °C (in darkness). Staining solution is composed of PI (140 µM), sodium citrate (38 mM) and Triton X-100 (0.01% v/v).

1.4.2. Warm up an appropriate surface (e.g. oven) to 37 °C.

1.4.3. Centrifuge fixed cells (450 x g, 5 min, RT), decant supernatant (ethanol) and wash once with 1X PBS.

1.4.4. Centrifuge cells again, remove PBS and add 300 µL of PI staining solution per sample (except to one of the samples for FACS settings; add PBS to this sample instead).

1.4.5. Transfer cells to FACS Tubes (5 mL round-bottom polystyrene tubes).

1.4.6. Add 1 µL of RNase A to each sample, mix and incubate samples for 30 min in darkness at 37 °C. Samples can be stored protected from light at 4 °C for a maximum of 2-3 days.

1.4.7. **Analyze DNA content in samples by flow cytometry.** Define FACS analysis compensation settings with PI-stained asynchronous sample. Use blank sample (without PI staining solution) to check for autofluorescence. Basics of PI staining-mediated analysis of DNA content by flow cytometry has been previously described⁹.

1.5. **Determination of mitotic index by double phospho-H3 (Ser 10)/PI staining**

NOTE: Cells undergoing mitosis can be easily detected by flow cytometry with antibodies specific for phospho-histone H3 in Serine 10 (pH3). A concomitant PI staining is useful to determine DNA content-based distribution of the cell population. 5 samples are required for the optimal configurations of FACS settings: blank, PI-only, pH3-only, secondary antibody-only and double staining.

1.5.1. Centrifuge fixed cells (450 x g, 5 min, 4 °C) and discard supernatant. The following steps are described to perform staining in 15 mL tubes.

1.5.2. Wash cells by adding 1 mL PBS-T (PBS + 0.05% Tween-20) to the pellet and centrifuge (450 x g, 5 min, 4 °C). Remove supernatant.

1.5.3. Add anti-pH3 antibody diluted (1:500) in 100-200 µL of PBS-T + 3% BSA, and incubate with rocking for 2 h at RT (or O/N at 4 °C).

1.5.4. Add 2 mL PBS-T (PBS + 0.05% Tween-20) and centrifuge (450 x g, 5 min, 4 °C). Remove supernatant.

1.5.5. Wash once more by adding 2 mL PBS-T to the pellet, centrifuge and discard supernatant.

1.5.6. Add secondary antibody (anti-rabbit AlexaFluor 488 in the case of selected pH3 antibody) diluted (1:500) in 100-200 µL of PBS-T + 3% BSA and incubate with rocking for 1 h at RT (or O/N at 4 °C). Protect samples from light.

1.5.7. Wash twice with PBS-T (2 mL) by centrifugation as described in step 1.5.4.

1.5.8. Perform PI staining as described (steps 1.4.1 to 1.4.6).

2. Sample collection and processing for gene expression analysis

2.1. Take 1.5 mL microcentrifuge samples in the trypsin reagent out of the freezer and let them thaw at RT inside a safety cabinet for chemicals.

2.2. Add 400 µL of chloroform to each sample and shake vigorously (but do not vortex) until complete mixing. Incubate samples for 5 min at RT.

2.3. Centrifuge tubes for 15 min ($\geq 8000 \times g$, 4 °C) in a benchtop microcentrifuge.

2.4. Transfer the aqueous (upper) phase to a new 1.5 mL microcentrifuge tube and register the transferred volume (in order to simplify the procedure, it is recommended to collect equal volumes in all samples of the experiment).

2.5. Add 1 volume of 100% ethanol slowly (drop by drop) to the aqueous phase while mixing. Do not centrifuge.

2.6. Perform the next steps for purified RNA elution with the commercial RNA mini prep kit. Pipet up to 700 µL of each sample, including any precipitate that may have formed, into a spin column in a 2 mL collection tube (provided by the manufacturer).

2.7. Close the lid and centrifuge ($\geq 8000 \times g$, RT) for 15 s. Discard the flow-through. Repeat previous step with the remaining sample (if any).

2.8. Follow manufactures' instructions for RNA washing and elution (elute each sample in 30-

40 µl nuclease-free H₂O in order to achieve an appropriate RNA concentration for next step).

2.9. Determine RNA concentration and purity of samples by absorbance measurements (a $A_{260/280}$ ratio of 2.0-2.1 indicates good purity of the RNA sample). Store RNA samples at -80 °C until use for RT-qPCR analysis.

2.10. For RNA conversion into cDNA and subsequent quantitative-PCR, take 1 µg RNA per sample and prepare retrotranscriptase reaction according to manufacturers' instructions. Obtained cDNA samples can be stored at 4 °C (for a couple of days) or at -20 °C (for longer periods of time).

NOTE: Sample preparation, primer design and other considerations for real time-PCR have been extensively described in the literature^{22,23}.

REPRESENTATIVE RESULTS:

Schematic representation of Thy-Noc and HU-based protocols for cell synchronization.

Figure 1 summarizes the steps required for U2OS cell synchronization and subsequent sample collection in order to verify progression through the cell cycle and to perform gene expression analyses.

Phospho-H3 and PI staining are good evaluation parameters to select synchronization methods.

Cell synchronization procedures must be assessed and optimized for each cell line due to inherent heterogeneity of cultured cells. Synchronization in mitosis is typically achieved with Thy-Noc protocol, and enrichment of mitotic cells after treatment with nocodazole can be assessed with antibodies specific for phosphorylated histone H3 (pH3), a typical mitotic marker. Identification of pH3 positive cells allows discriminating between mitotic cells and those with a 4C-DNA content not undergoing mitosis (all of which are considered a "G2" population by PI staining). In U2OS cells Thy-Noc protocol lead to a significant enrichment of a population with 4C DNA content (Figure 2A, upper left graph, blue population by PI staining), and the relative fraction of mitotic cells within this population was routinely quite pure (approximately 91% compared to 2% in asynchronous cells). Release from nocodazole results in a synchronized progression of cells to the next G1 phase, as determined by the accumulation of a population with 2C DNA content (Figure 2A, upper right graph, green population by PI staining) and the near disappearance of pH3 positive mitotic cells (Figure 2A, lower right graph). Thus, pH3 staining results confirmed the suitability of Thy-Noc protocol for mitotic synchronization of U2OS cells.

Synchronization of U2OS cells in G1/S was tested with thymidine and hydroxyurea, two widely used synchronizers. Enrichment in different phases of the cell cycle was determined by PI staining and FACS analysis and percentage of cells summarized in a table (Figure 2B). A 24 h exposure of U2OS cells to Thy (2mM) was inefficient in arresting cells in G1/S boundary (Figure 2B), whereas treatment with HU or with a double round of thymidine (DT) resulted in a satisfactory arrest. However, only HU-treated cells recovered completely from arrest and

progressed adequately through the cell cycle. By contrast, DT block induced a permanent G1 arrest in a significant fraction of the cell population (13.3% of cells in G1 at 6 h time point with DT vs. 3.1% with HU-based protocol), which negatively affected cell synchrony. Thus, exposure to HU is recommended as an appropriate G1/S synchronization method for U2OS cells.

Thy-Noc- and HU-based protocols are complementary for cell synchronization.

As shown in Figure 3A (0 h time point), treatment by Thy-Noc protocol efficiently arrested U2OS cells in M-phase entry (population with 4C DNA content, shown in blue) and treatment by HU protocol arrested cells in G1/S boundary (population with 2C DNA content, shown in green/red). Upon removal of the drugs, cells entered into and progressed through the cell cycle in a synchronized fashion. Cells recovered from Thy-Noc treatment were first observed in early G1 phase (population in green) and subsequently transitioned through G1 and up to S phase in a uniform fashion. Cells recovered from HU treatment progressed synchronously through S (population in red) and G2/M. Progression through the next cell cycle was concomitant to the loss of synchronicity. Consequently, time points over 15 hours were not included in these analyses because of loss of synchronicity after this time point.

Western blot analysis of Cyclin E1 (a G1/S cyclin) and Cyclin B1 (a G2/M cyclin), two proteins whose levels are tightly regulated in the cell cycle, and of the mitotic marker pH3, confirmed the cell cycle phase of each time point analyzed by FACS (Figure 3B). As expected, cells in M phase (corresponding to 0 h time point of Thy-Noc-synchronized cells) and cells in G2 to M phase (9 h to 12 h time point of HU-synchronized cells) showed a dramatic accumulation of cyclin B1 and undetectable levels of cyclin E1. Furthermore, Cyclin B1 levels were low to undetectable in G1 phase (3 h upon release from nocodazole) and gradual accumulation was observed as cells progressed through S (after Thy-Noc release) and into G2 (after HU release). Strong pH3 labeling of cells at 0 h upon Thy-Noc synchronization confirmed the enrichment of cells arrested at mitosis at this time point. Slight increase on pH3 levels at 12 h after release from HU revealed that the majority of cells with 4C DNA content were still in G2 while the proportion of cells in mitosis was increased at 15 h time point. By contrast, the expression pattern of Cyclin E1 showed a progressive accumulation from early G1 to S-phase entry (Thy-Noc procedure) and gradual disappearance in G2/M phase (HU procedure).

Expression of genes that are differentially regulated in the cell cycle can be accurately analyzed with a combination of Thy-Noc- and HU-based synchronization.

As a proof-of-concept that cell cycle-regulated gene expression analysis is best assayed by a combination of two cell synchronization methods, mRNA expression of two E2F family members known to have different expression kinetics in the cell cycle (E2F1 and E2F7) were examined by reverse transcriptase quantitative PCR (RT-qPCR). To this end, Thy-Noc and HU synchronization protocols were used, as summarized in Figure 1, and cell cycle distribution was monitored by flow cytometry as shown in Figure 3A. Figure 4 shows E2F1 (upper two graphs) and E2F7 (lower two graphs) mRNA profiles through the cell cycle. The transcriptional regulation profile of E2F1 encoding gene was best observed with Thy-Noc procedure, whereby E2F1 expression started to gradually increase from early G1 phase to reach a peak at late G1 phase (9 h after Thy-Noc release; green background). Its levels decreased thereafter, concomitant with an entry into S

and G2 phases (red and blue backgrounds). By contrast, E2F7 gene expression kinetics were best detected after HU-based synchronization (lower graph; red background), with a peak expression at 6 h from release (corresponding to S to G2 phase transition). Thy-Noc procedure, on the other hand, was suitable for observing induction of E2F7, but not its downregulation. Of note, extension of the analysis beyond 15 h time point reproduced E2F1 and E2F7 mRNA expression profiles of earlier time points, although with a diminished range of mRNA variation (data not shown). Altogether, these results confirm the importance of working with a properly synchronized cell population to assess not only gene expression kinetics but also the accurate amplitude of changes in the mRNA levels.

Cell synchronization provides a better understanding of the gene expression program impacted by anticancer therapy.

To analyze the effect of the antitumor drug mitomycin C (MMC) in cell cycle dynamics as well as in gene expression, U2OS cells were first synchronized with HU and subsequently treated with MMC. Exposure to this genotoxic agent activated a checkpoint in G2 phase that was evident after 15 h of exposure (Figure 5A, lower row, blue peak). By contrast, untreated cells progressed normally through G1 at this time point (Figure 5A, upper row, green peak). Long-term MMC treatment (36 h) revealed a permanent arrest of cells in G2 phase while cells with no MMC treatment exhibited a cell cycle distribution that was similar to that shown by the asynchronous cell population.

E2F1 and p21^{Cip1} (CDKN1A) were chosen for gene expression analysis in MMC-treated cells (Figure 5B), given their different cell cycle-dependent regulation. Expression of E2F1 is G1 phase-dependent, as described in Figure 4, whereas induction of p21^{Cip1} expression is coupled to cell cycle arrest/checkpoint activation²⁴. As shown in Figure 5B (upper left graph), E2F1 gene expression kinetics were similar in the presence or absence of MMC, as cells progressed through G1/S and into S phase. Differences in E2F1 gene expression among MMC treated and untreated cells were observed after 15 h of exposure to MMC, whereby MMC-treated cells expressed lower E2F1 mRNA levels than control cells (Figure 5B, compare solid and dashed lines). However, despite the clear difference in expression, it cannot be concluded that MMC downregulates E2F1 expression, because cell cycle profiles of MMC treated and untreated cells are clearly different in these later time points, owing to a sustained G2 phase arrest imposed by MMC. In fact, low E2F1 mRNA levels after the 15 h time point in MMC-exposed cells probably reflect an effect of the drug in cell cycle dynamics, rather than an effect of MMC in E2F1 transcriptional regulation.

In contrast to E2F1, p21^{Cip1} is an MMC-responsive gene. Elevated levels of p21^{Cip1} were detected at HU-imposed G1/S arrest, indicating G1 checkpoint activation by HU (Figure 5B, 0 h time point) and its expression decreased thereafter in non-MMC treated cells, consistent with an unperturbed cell cycle progression after release from arrest. By contrast, MMC treatment led to elevated p21^{Cip1} mRNA levels (Figure 5B, upper right graph, solid line) while cells were accumulating in G2 phase (9 h of MMC exposure). Despite the fact that cell cycle profiles were similar at the 9 h time point in control and MMC treated cells, gene expression analysis shows a fundamental difference. MMC exposed cells displayed an activated G2 checkpoint, evidenced by

induction of p21^{Cip1} expression, whereas untreated cells were undergoing an unperturbed transition through G2, with low p21^{Cip1} levels.

Data obtained by flow cytometry analysis (Figure 5A) and data resulting from RT-qPCR (Figure 5B, upper graphs) were combined in a single graph for each of the selected genes (Figure 4B, lower graphs). mRNA expression levels were shown as relative height of the bars while the cell cycle distribution of cells for each sample was illustrated with the proportion of colors: green for G1 phase (2C DNA content), blue for G2 phase (4C DNA content) and red for S phase (intermediate DNA content). This combined method of graphical representation may be helpful for interpreting cell cycle distribution and gene expression analyses.

In summary, gene expression analysis coupled to a culture synchronization method allowed the identification of a genotoxic agent-responsive gene (p21^{Cip1}) and led to propose that changes observed in E2F1 expression between cells treated and untreated with the agent were indirect, and possibly related to differences in cell cycle distribution of cells.

Figure 1. Overview of two complementary cell synchronization protocols: Thymidine-Nocodazole and Hydroxyurea.

(A) Graphical representation of the mammalian cell cycle indicating the points at which cell cycle arrest is achieved by cell synchronization methods. Thy-Noc-based procedure blocks cells in early mitosis (M) while HU blocks cells at the G1/S boundary. (B) Schematic representation of Thy-Noc protocol of cell synchronization. Shown are the steps typically used for gene expression analysis and cell cycle monitoring in U2OS cells. (C) Schematic representation of HU-based protocol of cell synchronization. Shown are the steps typically used for gene expression analysis and cell cycle monitoring in U2OS cells. A shorter synchronization procedure omitting serum starvation can also be applied if optimal synchronization is already achieved by a 24 h exposure to HU.

Figure 2. Assessment of suitable synchronization methods.

(A) Asynchronous and Thy-Noc synchronized U2OS cell cultures were subjected to pH3 staining in order to assess the fraction of mitotic cells in each case. Simultaneous PI staining allowed monitoring of the DNA content of cells. In the asynchronous population only a minimal fraction of cells with 4C DNA content (in blue) were positive for the mitosis marker. By contrast, Thy-Noc protocol efficiently accumulated cells in mitosis (positive for the pH3 staining) and allowed proper progression to the next G1 phase (in green) upon removal of nocodazole (3 h time point). Percentage of cells in each phase is summarized in the table and labeled with colors according to those employed in the PI histograms: green for 2C DNA content cells (G1), blue for cells with 4C DNA content (including G2 and M cells and named as G2 in the histograms in order to simplify the figure, and red for cells with intermediate DNA content (S). (B) Thymidine and HU were assessed for their cell cycle synchronization efficiency in U2OS cells. Cells were treated with thymidine (one or two rounds), or with HU for 24 h, and cell synchronization was examined by PI staining and FACS analysis. Summit was used for FACS data analysis.

Figure 3. Outlining the temporal frame for uniform progression of cells after Thy-Noc- and HU-

mediated synchronization.

(A) U2OS cells were synchronized in M phase by Thy-Noc protocol (upper row) or in G1/S transition by HU protocol (lower row). Cell cycle progression was monitored by PI staining and FACS analysis of the DNA content of cells every 3 h after the release from chemicals. Summit was used for FACS data analysis. Cells released from Thy-Noc-mediated arrest entered synchronously in early G1 phase after 3 h, and progressed uniformly up to S phase at subsequent time points. Cells released from HU-mediated arrest transitioned synchronously through S and G2 phases. Cells collected 15 h after release represented the limits for cell synchronization, as progression to next phase was only achieved by a fraction of the population. (B) Cell synchronization was monitored by Western blot analysis by collecting protein samples every 3 h and up to 15 h following release. Expression kinetics of Cyclin E1 (CCNE1), a cyclin predominantly accumulated through the S phase, cyclin B1 (CCNB1), mainly present from G2 to M phase and pH3, a marker for mitotic cells, corroborated cell cycle distribution profiles observed by flow cytometry. Actin B (ACTB) was used as an endogenous loading control because its levels are not cell cycle-dependent. (As modified from Mitxelena *et al.*⁸).

Figure 4. Study of cell cycle phase-dependent transcription of E2F family members by complementary cell synchronization methods.

U2OS cells were arrested in G2/M by Thy-Noc protocol or in G1/S by HU treatment, and samples were collected for RNA extraction and FACS analysis every 3 h up to 15 h upon release from arrest. Gene expression analysis by RT-qPCR revealed an E2F1 expression profile circumscribed mainly to G1 (upper left graph) while E2F7 gene expression profile was shifted to S phase, with a gradual downregulation through G2 phase (lower right graph). TBP was used as endogenous non-cell cycle-regulated gene to calculate relative changes in mRNA levels and results were represented as the mean values and standard deviation (SD). Progression through cell cycle was determined by PI staining and FACS analysis of the DNA content of cells. Cell cycle phases were represented as background colors in graphs: black (arrest at early mitosis), green (G1 phase), red (S phase) and blue (G2 phase).

Figure 5. Impact of MMC on gene expression and cell cycle progression.

U2OS cells were treated with HU for 24 h, and MMC (250 nM) was added immediately after release from HU-mediated G1/S arrest. Samples for FACS analysis and gene expression analysis were collected at indicated time points. A) Progression through the cell cycle was determined by PI staining and FACS analysis of DNA content by Summit software. MMC induced a moderate delay in the progression through S phase (red population) and a permanent arrest in G2 phase (blue population), as shown by the absence of cells in G1 (green population) after 15 h of treatment (lower row) compared to non-treated (upper row) cells. B) E2F1 and p21^{Cip1} gene expression analysis in MMC treated or untreated cells was performed at the mRNA level by RT-qPCR. Oxa1L was used as an endogenous non-MMC-responsive gene and results were represented as mean values and SD. Upper graphs represent relative mRNA levels of selected genes after release from HU and addition of MMC. Lower graphs combine data obtained by FACS analysis and RT-qPCR.

DISCUSSION:

Analysis of fine-tune regulated genes involved in transient and specific roles in the cell cycle requires a uniform cell population. Many researchers routinely use long-established tumor cell lines for these purposes, and a variety of methods have been developed to obtain synchronous (or partially synchronous) cell populations, with the aim to accumulate as many cells as possible in defined cell cycle phases. Moreover, strong efforts have been undertaken to improve and optimize well-established synchronization approaches. Nevertheless, all synchronization protocols have drawbacks, which can be attributable to heterogeneity of cell cultures, to suboptimal efficiency of the synchronization procedures, or to secondary effects that chemical synchronizers have in cell function, among others. These limitations must be taken into account when applying cell synchronization protocols. Researchers need to identify the most suitable synchronization methods for their specific cell type or experiment. Even cultivating different cell lines in exactly the same way, resulting synchronization rates may differ due to several reasons. On the one hand, length of the cell cycle may vary depending on the selected cell line; on the other hand, the same inhibitor may have contrasting effects on different cell lines due to particular characteristics of each cell line²⁵. Furthermore, selected inhibitor concentration and exposure time must always be adjusted to each cell line in order to avoid or minimize non-desirable side-toxicity²⁶. Even after optimization of all these aspects, 100% accumulation of cells in a given cell cycle phase is never achieved, and asynchrony increases gradually after removal of the chemical²⁷. Thus, it is important to understand that synchronization methods obtain at best partial cell population enrichments in a particular time frame.

In this work two synchronization procedures (Thy-Noc and HU) have been optimized for their use in U2OS cells, both of which are extensively used for cell synchronization assays²⁸⁻³⁰. For arresting cells in M phase, a combination of thymidine and nocodazole worked efficiently in U2OS cells. Given the cytotoxic nature of nocodazole, it was important to determine the exposure time and dose of this inhibitor in order to obtain not only a highly synchronized cell population but also optimal cell survival. Prior exposure to thymidine (or theoretically any other similar compound such as hydroxyurea) led to an enrichment of the cell population in G1 and S phases, thereby decreasing the required nocodazole exposure time. For arresting cells in G1/S, several possibilities were considered, including double thymidine block, a method that is very efficient in synchronization of several cell-lines^{31,32}. However, thymidine was discarded given its disappointing results in U2OS. One round of thymidine treatment only arrested a fraction of cells, whereas two rounds of thymidine treatment efficiently blocked the majority of cells in G1/S, but a G1 population was maintained after release from thymidine and cell cycle progression did not proceed uniformly. By contrast, hydroxyurea treatment provided good G1/S blocking results and uniform progression of cells through S and into G2.

Cell cycle phase distribution should be examined whenever performing cell synchronization experiments (e.g. by propidium iodide staining or pH3 labeling followed by FACS analysis, or by immunoblotting of cell cycle phase-specific proteins)^{16,33,34}, in order to better interpret gene expression results. An incorrect synchronization efficiency or slight inter-experimental differences in the progression through the cell cycle may lead to wrong conclusions. For example, nocodazole treatment is known to cause failure of mitotic checkpoint function under certain conditions. This gives rise to a population of cells with 4C DNA content but negative for

mitotic markers³⁴ that “slips” mitotic division and returns to interphase with a 4C content³⁵. The emergence of this subset of cells, which can be detected by immunostaining with anti-phospho-H3 antibodies (see Figure 2A) may be minimized by the use of cold PBS for the nocodazole washing steps. Another effect associated with the use of chemical inhibitors that impacts cell synchrony is checkpoint activation associated with exposure to these compounds^{36,37}, a mechanism by which the cell actively arrests progression through the cell cycle until it can ensure that processes previous to that precise point (e.g. correct DNA replication, spindle assembly), are resolved³⁸. For a synchronization method to be adequate, the arrest must be not only efficient but also completely reversible. Thus, after release of cell cycle inhibitors it is important to analyze whether the effects of the inhibitor have been reverted, for example by analyzing expression of checkpoint markers, such as p21^{CIP}. Figure 5B shows that hydroxyurea-synchronized U2OS cells efficiently resolved the checkpoint, because p21^{CIP} levels were reduced to basal expression after release.

In U2OS cells, the enrichment percentages upon cell cycle arrest fall within the range reported by other studies on cell synchronization^{29,30,39}: around 85% of cells with 4C DNA content (PI staining) and approximately 90% of those in mitosis (pH3 positive labeling) upon thymidine-nocodazole treatment, and around 80-90% of G1/S cells after hydroxyurea treatment. Release from cell cycle arrest typically drives proper progression through the next one or two phases in a uniform manner, although synchronization is invariably lost after several hours and cells are unable to complete an entire cell division cycle in a synchronized manner. Therefore, in order to get a full picture of all the phases of the cell cycle, the protocol proposed in this work makes use of two synchronization methods from different parts of the cell cycle. As shown in Figure 3A, each individual protocol did not ensure synchronicity over an entire cell cycle. Thy-Noc-based synchronization provided an appropriate frame for processes occurring in G1 to S phases, while cells released from HU were suitable for the analysis of events taking place during S and G2/M. The complementarities of the selected two procedures were demonstrated by the analysis of two members of the E2F transcription factor family (Figure 4), supporting the idea that combination of two methods that synchronize in different phases of the cell cycle is a powerful approach to accurately establish cell cycle-regulated gene expression patterns and to better understand their physiological role.

A compelling application of cell synchronization procedures focuses on evaluating the impact of potential therapeutic agents. The effect of pharmaceutical compounds, such as those with antitumor activity is often studied in asynchronous cell populations. Under these settings it is possible to determine the implication of the selected drug in the induction of several processes such as cell death, cell cycle arrest or senescence^{7,40}. However, selection of asynchronous cell settings for identification of precise molecular events regulating such processes may lead to incomplete or partially wrong conclusions. This point, which is often overlooked, has been illustrated in the present work by analyzing the effect of the chemotherapeutic drug MMC on E2F1 and p21^{CIP1} gene expression (Figure 5). Overall, combination of cell synchronization and treatment with genotoxic agents provides a suitable context in which to study the expression of genes that are responsive to the genotoxic agent and to discriminate from those affected by cell cycle perturbations imposed by the agent.

ACKNOWLEDGMENTS:

We thank members of the Zubiaga and the Altmeyer laboratories for helpful discussions and for technical support. This work was supported by grants from the Spanish Ministry (SAF2015-67562-R, co-funded by the European Regional Development fund), the Basque Government (IT634-13 and KK-2015/89), and the University of the Basque Country UPV/EHU (UFI11/20).

DISCLOSURES:

The authors have nothing to disclose.

REFERENCES

- 1 Sánchez-Beato, M., Sánchez-Aguilera, A., & Piris, M.A. Cell cycle deregulation in B-cell lymphomas. *Blood*. **101** (4), 1220-1235, doi:10.1182/blood-2002-07-2009 (2003).
- 2 Chen, H.Z., Tsai, S.Y., & Leone, G. Emerging roles of E2Fs in cancer: an exit from cell cycle control. *Nat Rev Cancer*. **9** (11), 785-797, doi:10.1038/nrc2696 (2009).
- 3 Cho, R.J. *et al.* Transcriptional regulation and function during the human cell cycle. *Nat Genet*. **27** (1), 48-54, doi:10.1038/83751 (2001).
- 4 Peña-Díaz, J. *et al.* Transcription profiling during the cell cycle shows that a subset of Polycomb-targeted genes is upregulated during DNA replication. *Nucleic Acids Res*. **41** (5), 2846-2856, doi:10.1093/nar/gks1336 (2013).
- 5 Grant, G.D. *et al.* Identification of cell cycle-regulated genes periodically expressed in U2OS cells and their regulation by FOXM1 and E2F transcription factors. *Mol Biol Cell*. **24** (23), 3634-3650, doi:10.1091/mbc.E13-05-0264 (2013).
- 6 Minderman, H. *et al.* In vitro and in vivo irinotecan-induced changes in expression profiles of cell cycle and apoptosis-associated genes in acute myeloid leukemia cells. *Mol Cancer Ther*. **4** (6), 885-900, doi:10.1158/1535-7163.MCT-04-0048 (2005).
- 7 McKenna, E., Traganos, F., Zhao, H., & Darzynkiewicz, Z. Persistent DNA damage caused by low levels of mitomycin C induces irreversible cell senescence. *Cell Cycle*. **11** (16), 3132-3140, doi:10.4161/cc.21506 (2012).
- 8 Infante, A. *et al.* E2F2 represses cell cycle regulators to maintain quiescence. *Cell Cycle*. **7** (24), 3915-3927, doi:10.4161/cc.7.24.7379 (2008).
- 9 Cecchini, M.J., Amiri, M., & Dick, F.A. Analysis of cell cycle position in mammalian cells. *J Vis Exp*. (59), doi:10.3791/3491 (2012).
- 10 Schorl, C. & Sedivy, J.M. Analysis of cell cycle phases and progression in cultured mammalian cells. *Methods*. **41** (2), 143-150, doi:10.1016/j.ymeth.2006.07.022 (2007).
- 11 Lalande, M. A reversible arrest point in the late G1 phase of the mammalian cell cycle. *Exp Cell Res*. **186** (2), 332-339 (1990).
- 12 Park, S.Y. *et al.* Mimosine arrests the cell cycle prior to the onset of DNA replication by preventing the binding of human Ctf4/And-1 to chromatin via Hif-1 α activation in HeLa cells. *Cell Cycle*. **11** (4), 761-766, doi:10.4161/cc.11.4.19209 (2012).
- 13 Ikegami, S. *et al.* Aphidicolin prevents mitotic cell division by interfering with the activity of DNA polymerase- α . *Nature*. **275** (5679), 458-460 (1978).
- 14 Baranovskiy, A.G. *et al.* Structural basis for inhibition of DNA replication by aphidicolin. *Nucleic Acids Res*. **42** (22), 14013-14021, doi:10.1093/nar/gku1209 (2014).

705 15 Adams, R.L. & Lindsay, J.G. Hydroxyurea reversal of inhibition and use as a cell-
 706 synchronizing agent. *J Biol Chem.* **242** (6), 1314-1317 (1967).

707 16 Mitxelena, J., Apraiz, A., Vallejo-Rodríguez, J., Malumbres, M., & Zubiaga, A.M. E2F7
 708 regulates transcription and maturation of multiple microRNAs to restrain cell proliferation.
 709 *Nucleic Acids Res.* doi:10.1093/nar/gkw146 (2016).

710 17 BOOTSMA, D., BUDKE, L., & VOS, O. Studies on synchronous division of tissue culture
 711 cells initiated by excess thymidinE. *Exp Cell Res.* **33**, 301-309 (1964).

712 18 Galgano, P.J. & Schildkraut, C.L. G1/S Phase Synchronization using Double Thymidine
 713 Synchronization. *CSH Protoc.* **2006** (2), doi:10.1101/pdb.prot4487 (2006).

714 19 TAYLOR, E.W. the mechanism of colchicine inhibition of mitosis. I. Kinetics of inhibition
 715 and the binding of h3-colchicine. *J Cell Biol.* **25**, SUPPL:145-160 (1965).

716 20 Zieve, G.W., Turnbull, D., Mullins, J.M., & McIntosh, J.R. Production of large numbers of
 717 mitotic mammalian cells by use of the reversible microtubule inhibitor nocodazole. Nocodazole
 718 accumulated mitotic cells. *Exp Cell Res.* **126** (2), 397-405 (1980).

719 21 Matsui, Y., Nakayama, Y., Okamoto, M., Fukumoto, Y., & Yamaguchi, N. Enrichment of
 720 cell populations in metaphase, anaphase, and telophase by synchronization using nocodazole
 721 and blebbistatin: a novel method suitable for examining dynamic changes in proteins during
 722 mitotic progression. *Eur J Cell Biol.* **91** (5), 413-419, doi:10.1016/j.ejcb.2011.12.008 (2012).

723 22 Nolan, T., Hands, R.E., & Bustin, S.A. Quantification of mRNA using real-time RT-PCR. *Nat*
 724 *Protoc.* **1** (3), 1559-1582, doi:10.1038/nprot.2006.236 (2006).

725 23 Thornton, B. & Basu, C. Real-time PCR (qPCR) primer design using free online software.
 726 *Biochem Mol Biol Educ.* **39** (2), 145-154, doi:10.1002/bmb.20461 (2011).

727 24 Abbas, T. & Dutta, A. p21 in cancer: intricate networks and multiple activities. *Nat Rev*
 728 *Cancer.* **9** (6), 400-414, doi:10.1038/nrc2657 (2009).

729 25 Kung, A.L., Sherwood, S.W., & Schimke, R.T. Cell line-specific differences in the control of
 730 cell cycle progression in the absence of mitosis. *Proc Natl Acad Sci U S A.* **87** (24), 9553-9557
 731 (1990).

732 26 Borel, F., Lacroix, F.B., & Margolis, R.L. Prolonged arrest of mammalian cells at the G1/S
 733 boundary results in permanent S phase stasis. *J Cell Sci.* **115** (Pt 14), 2829-2838 (2002).

734 27 Knehr, M. *et al.* A critical appraisal of synchronization methods applied to achieve
 735 maximal enrichment of HeLa cells in specific cell cycle phases. *Exp Cell Res.* **217** (2), 546-553,
 736 doi:10.1006/excr.1995.1121 (1995).

737 28 Zhu, W., Giangrande, P.H., & Nevins, J.R. E2Fs link the control of G1/S and G2/M
 738 transcription. *EMBO J.* **23** (23), 4615-4626, doi:10.1038/sj.emboj.7600459 (2004).

739 29 Whitcomb, E.A., Dudek, E.J., Liu, Q., & Taylor, A. Novel control of S phase of the cell cycle
 740 by ubiquitin-conjugating enzyme H7. *Mol Biol Cell.* **20** (1), 1-9, doi:10.1091/mbc.E08-01-0036
 741 (2009).

742 30 Bruinsma, W., Macurek, L., Freire, R., Lindqvist, A., & Medema, R.H. Bora and Aurora-A
 743 continue to activate Plk1 in mitosis. *J Cell Sci.* **127** (Pt 4), 801-811, doi:10.1242/jcs.137216
 744 (2014).

745 31 Thomas, D.B. & Lingwood, C.A. A model of cell cycle control: effects of thymidine on
 746 synchronous cell cultures. *Cell.* **5** (1), 37-42 (1975).

747 32 Whitfield, M.L. *et al.* Identification of genes periodically expressed in the human cell
 748 cycle and their expression in tumors. *Mol Biol Cell.* **13** (6), 1977-2000, doi:10.1091/mbc.02-02-

0030. (2002).

33 Lim, S. & Kaldis, P. Cdks, cyclins and CKIs: roles beyond cell cycle regulation. *Development*. **140** (15), 3079-3093, doi:10.1242/dev.091744 (2013).

34 Tapia, C. *et al.* Two mitosis-specific antibodies, MPM-2 and phospho-histone H3 (Ser28), allow rapid and precise determination of mitotic activity. *Am J Surg Pathol*. **30** (1), 83-89 (2006).

35 Andreassen, P.R., Martineau, S.N., & Margolis, R.L. Chemical induction of mitotic checkpoint override in mammalian cells results in aneuploidy following a transient tetraploid state. *Mutat Res*. **372** (2), 181-194 (1996).

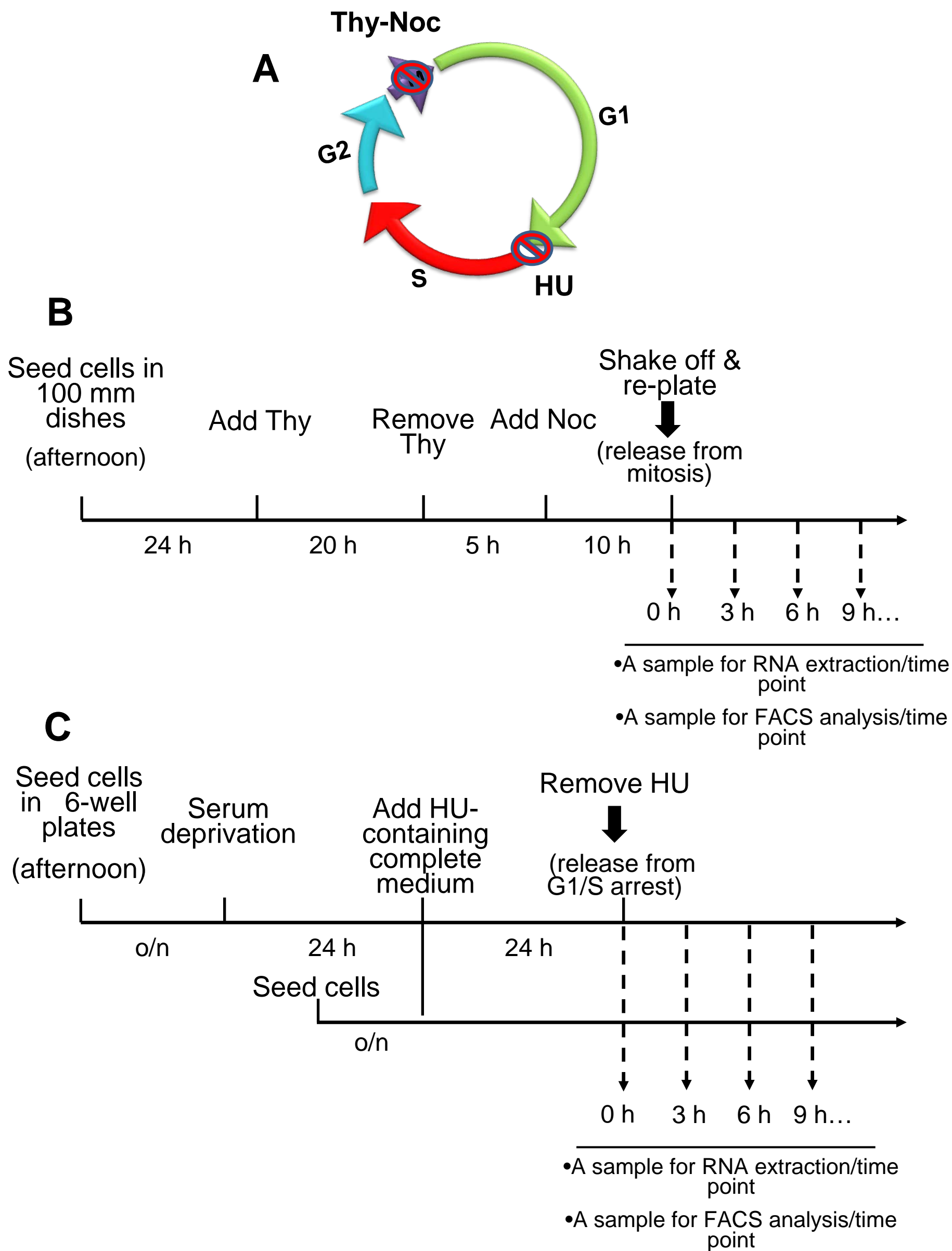
36 Wei, F., Xie, Y., He, L., Tao, L., & Tang, D. ERK1 and ERK2 kinases activate hydroxyurea-induced S-phase checkpoint in MCF7 cells by mediating ATR activation. *Cell Signal*. **23** (1), 259-268, doi:10.1016/j.cellsig.2010.09.010 (2011).

37 Kubota, S. *et al.* Activation of the prereplication complex is blocked by mimosine through reactive oxygen species-activated ataxia telangiectasia mutated (ATM) protein without DNA damage. *J Biol Chem*. **289** (9), 5730-5746, doi:10.1074/jbc.M113.546655 (2014).

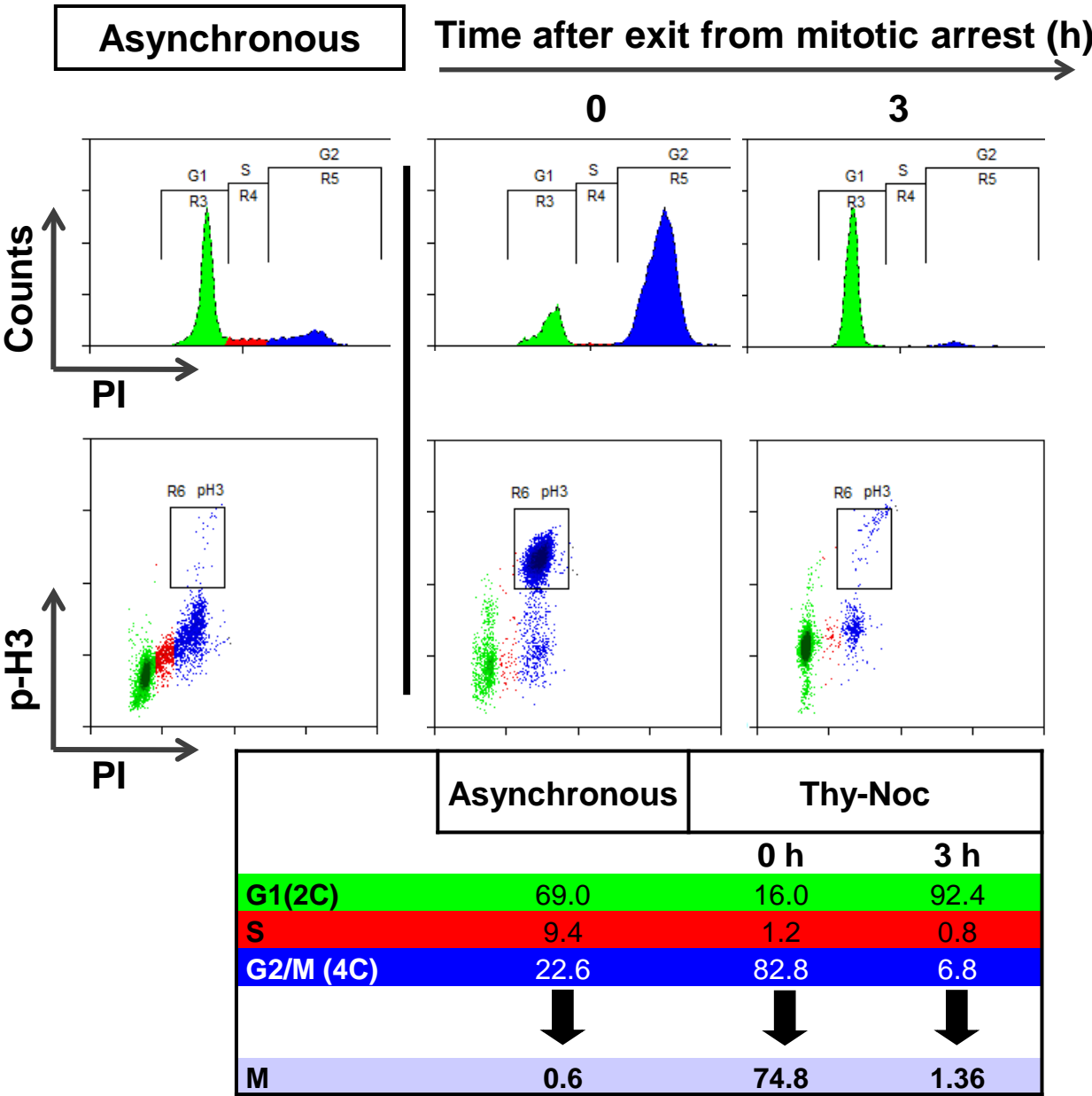
38 Hartwell, L.H. & Weinert, T.A. Checkpoints: controls that ensure the order of cell cycle events. *Science*. **246** (4930), 629-634 (1989).

39 St-Denis, N.A., Derksen, D.R., & Litchfield, D.W. Evidence for regulation of mitotic progression through temporal phosphorylation and dephosphorylation of CK2alpha. *Mol Cell Biol*. **29** (8), 2068-2081, doi:10.1128/MCB.01563-08 (2009).

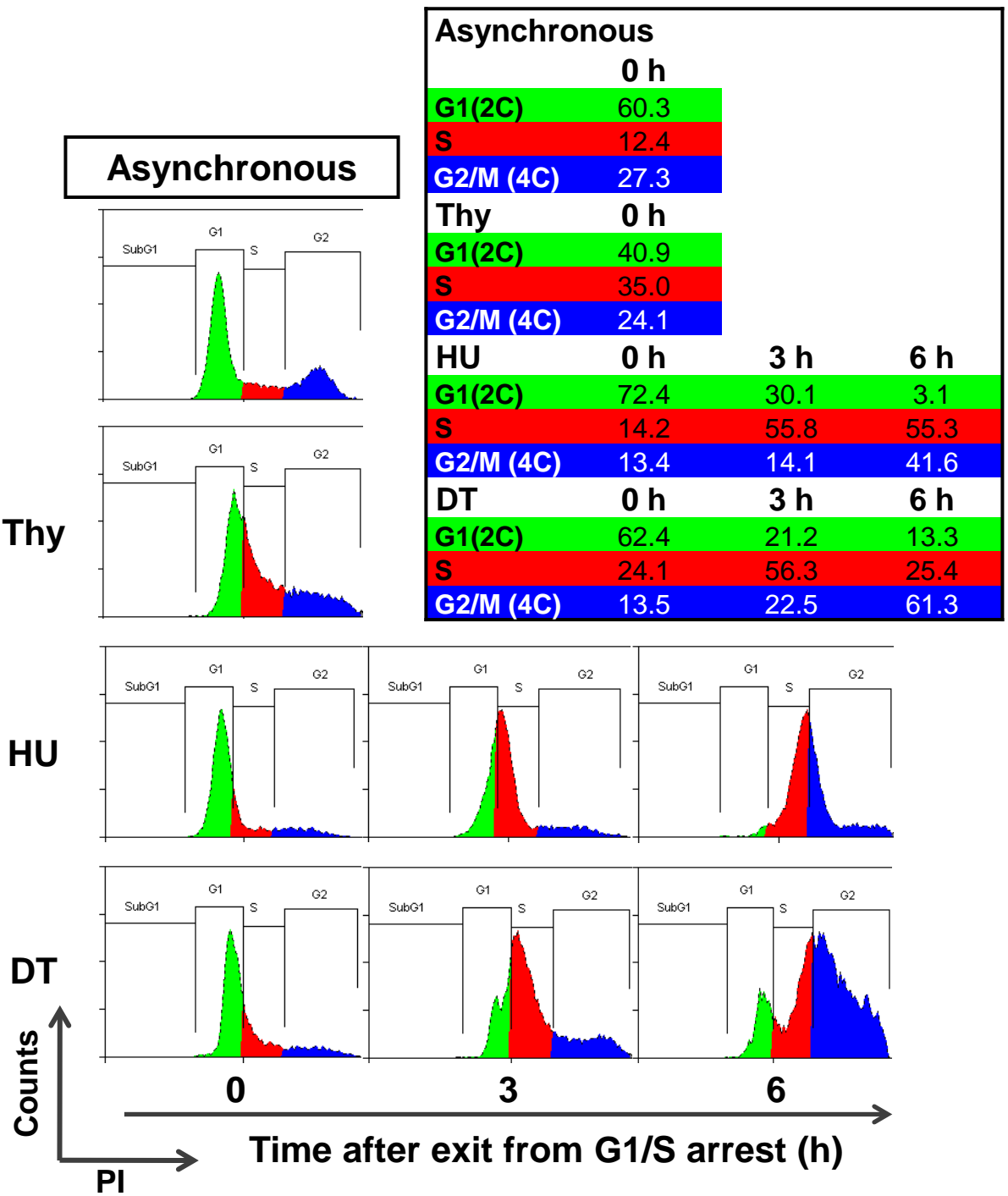
40 Min, A. *et al.* RAD51C-deficient cancer cells are highly sensitive to the PARP inhibitor olaparib. *Mol Cancer Ther*. **12** (6), 865-877, doi:10.1158/1535-7163.MCT-12-0950 (2013).

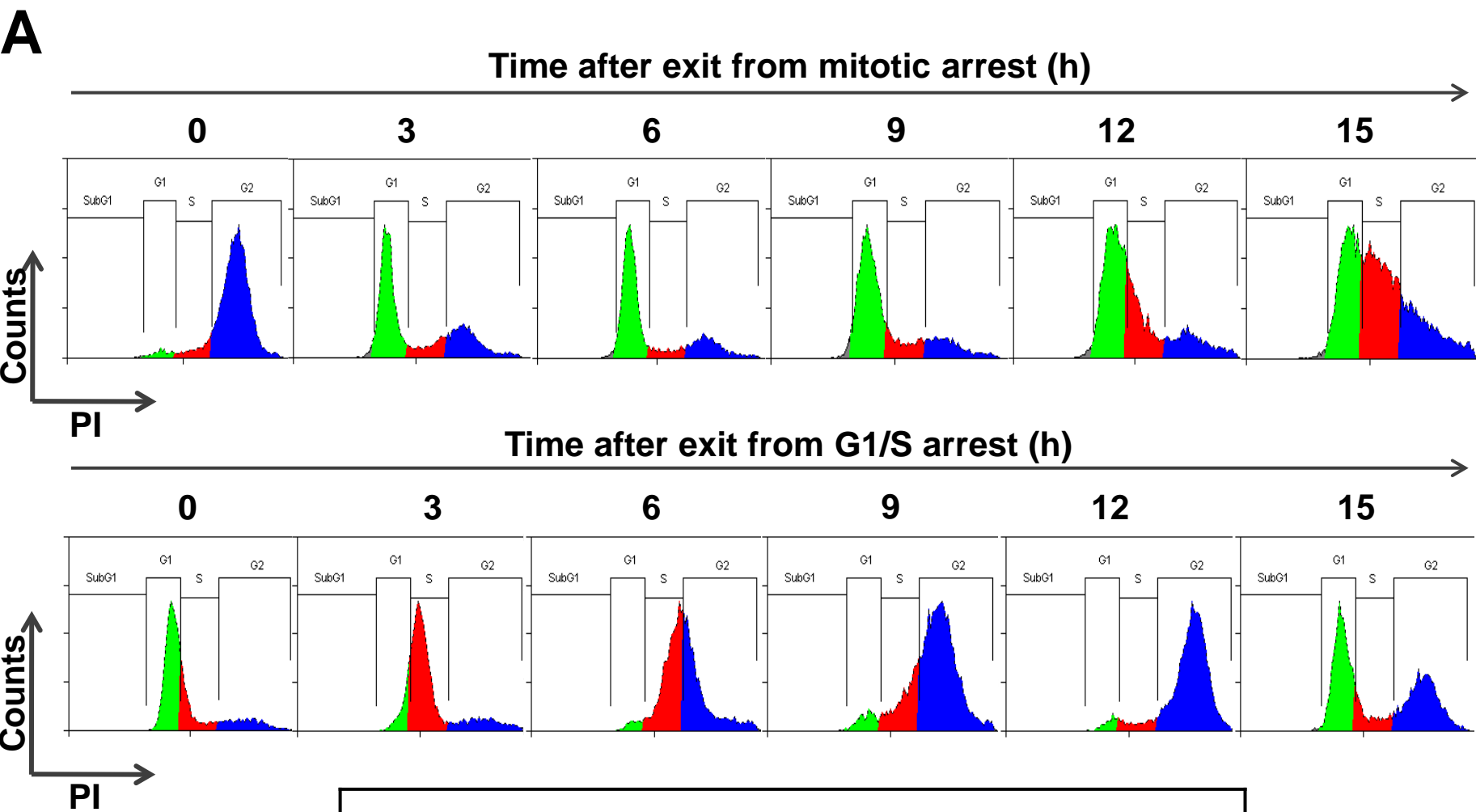


A



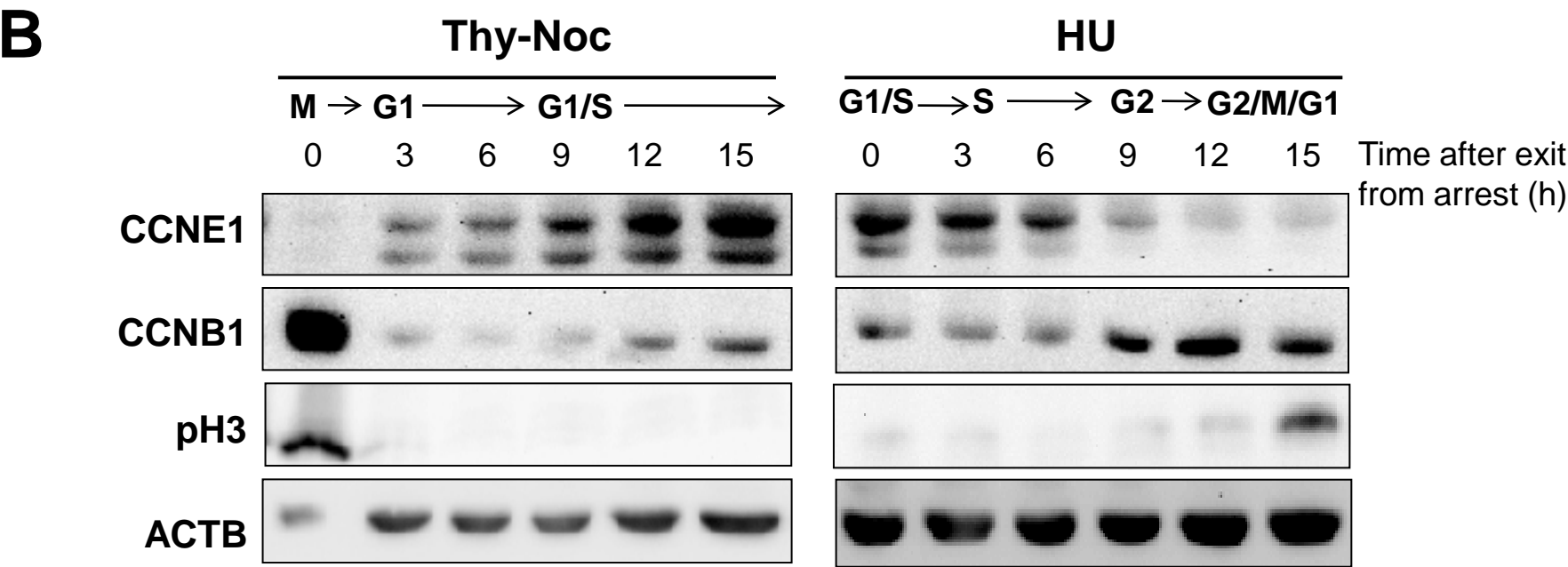
B

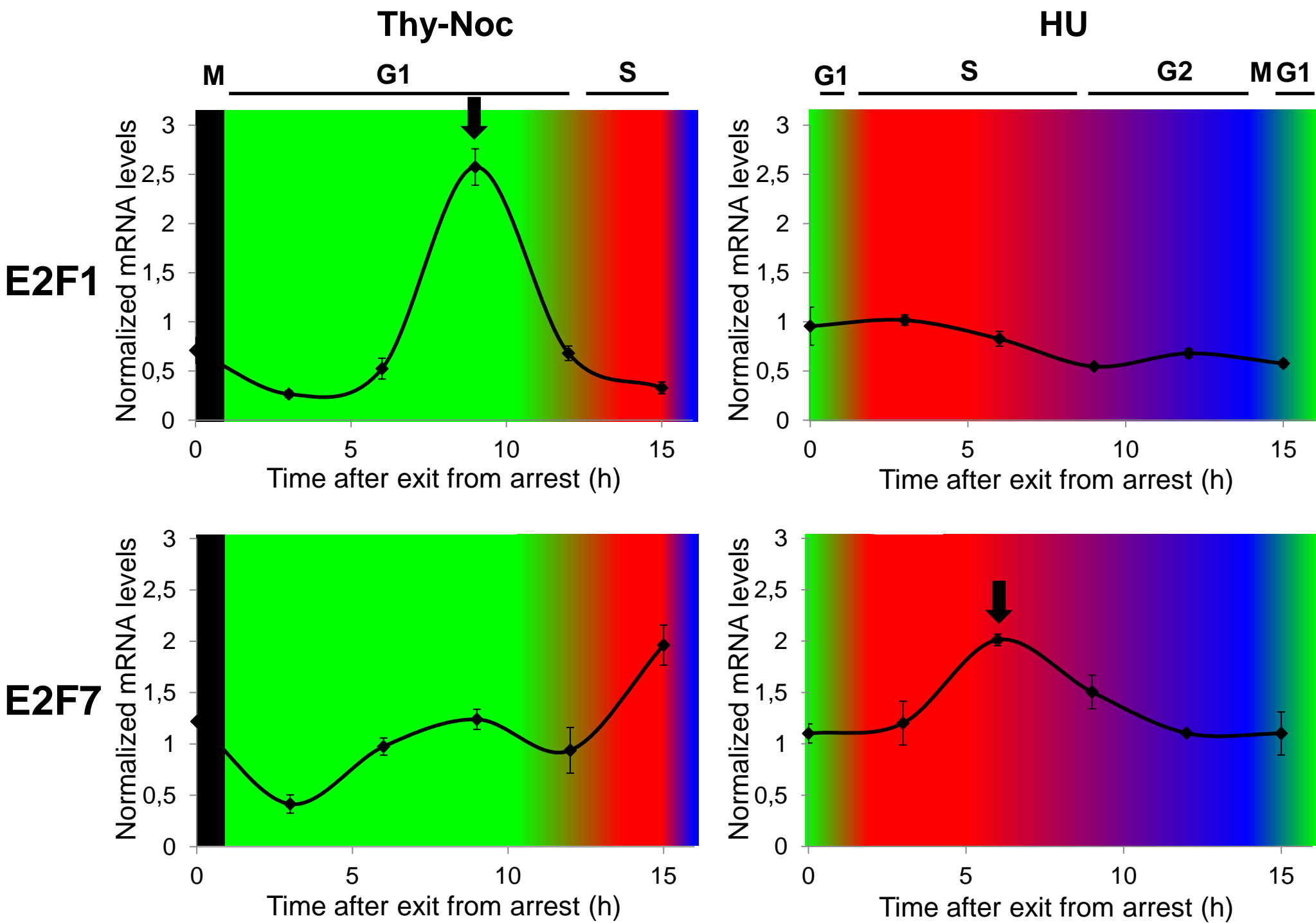


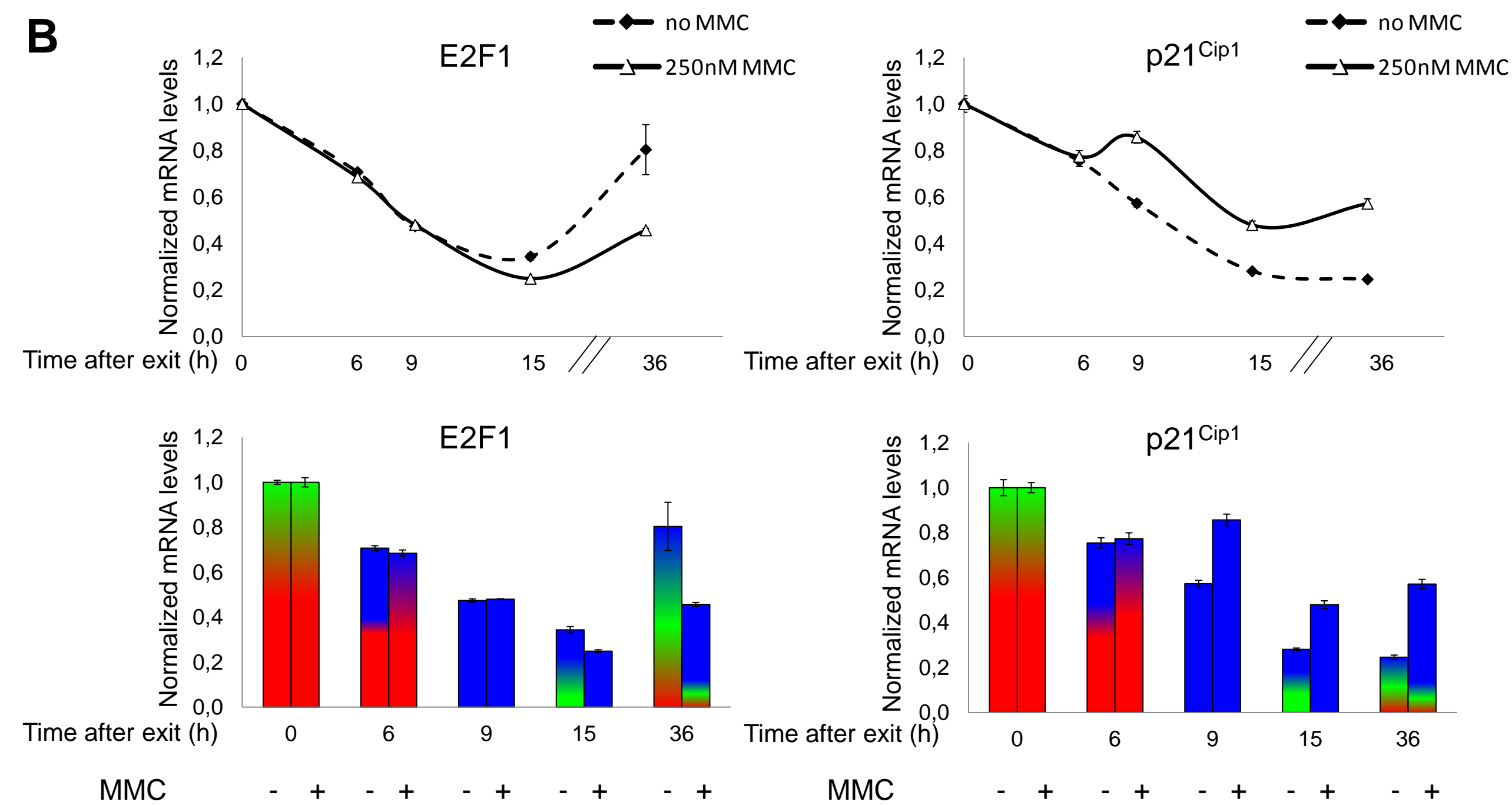
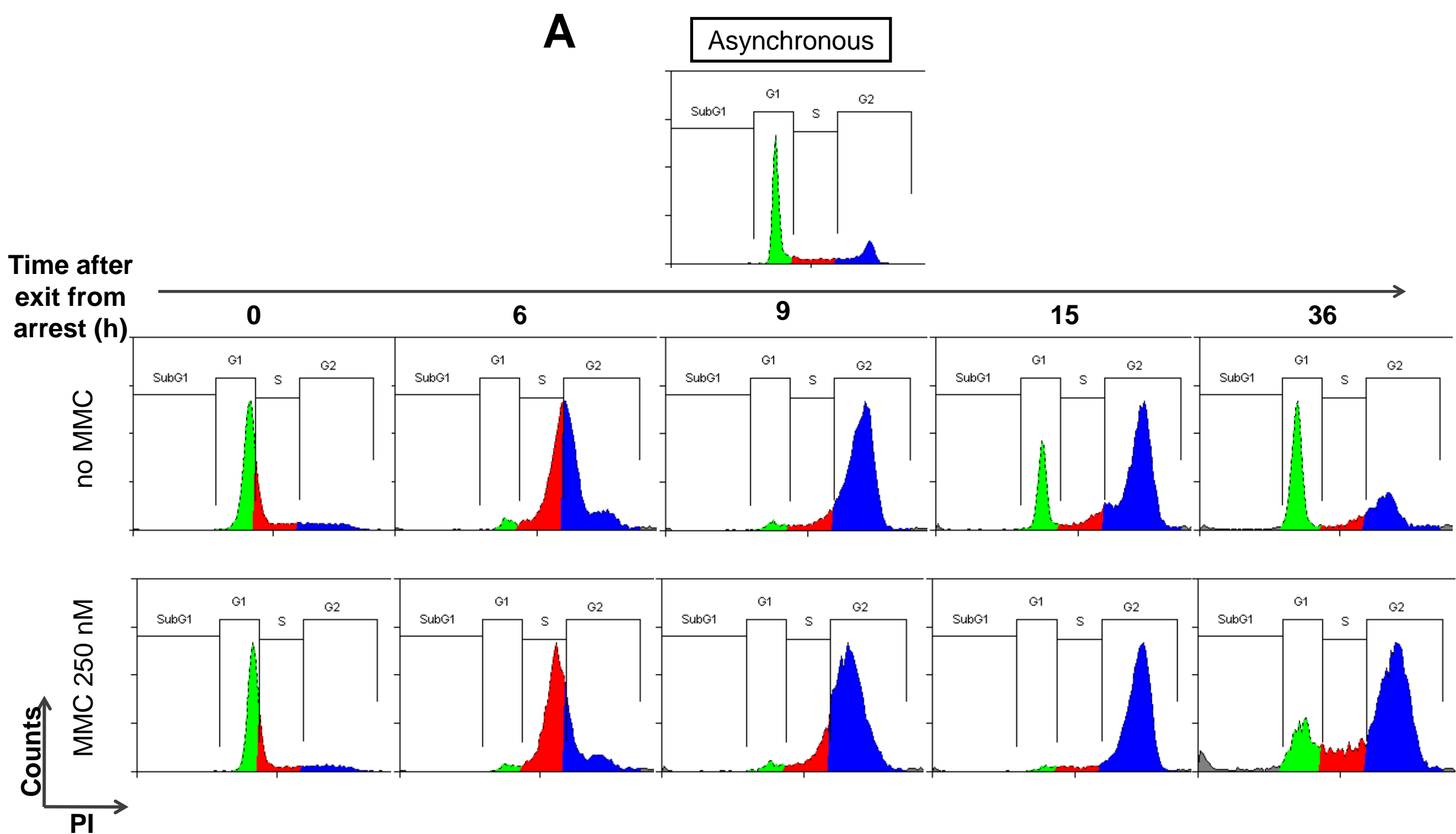


| | | | | | | |
|-----------|------|------|------|------|------|------|
| Thy-Noc | | | | | | |
| | 0 h | 3 h | 6 h | 9 h | 12 h | 15 h |
| G1(2C) | 3.2 | 57.5 | 66.7 | 65.3 | 52.9 | 34.6 |
| S | 8.2 | 13.4 | 10.0 | 16.9 | 30.5 | 41.9 |
| G2/M (4C) | 88.8 | 30.0 | 23.7 | 19.1 | 19.9 | 26.7 |

| | | | | | | |
|-----------|------|------|------|------|------|------|
| HU | | | | | | |
| | 0 h | 3 h | 6 h | 9 h | 12 h | 15 h |
| G1(2C) | 67.2 | 21.2 | 5.1 | 7.9 | 5.4 | 46.3 |
| S | 20.2 | 65.3 | 56.2 | 24.4 | 8.2 | 13.6 |
| G2/M (4C) | 16.6 | 18.4 | 43.3 | 70.2 | 87.4 | 42.1 |







| Name of Material/ Equipment | Company | Catalog Number | Comments/Description |
|---|--------------------------|----------------|---|
| DMEM, high glucose, GutaMAX supplement | Thermo Fisher Scientific | 61965-059 | |
| FBS, qualified, E.U.-approved, South America origin | Thermo Fisher Scientific | 10270-106 | |
| Penicillin-Streptomycin (10,000 U/mL) | Thermo Fisher Scientific | 15140-122 | |
| 0.25% Trypsin-EDTA (1X), phenol red | Thermo Fisher Scientific | 25200-072 | |
| Thymidine | SIGMA | T1895-5G | Freshly prepared. Slight warming might help dissolve thymidine. |
| Nocodazole | SIGMA | M-1404 | Stock solution in DMSO stored at -20 °C in small aliquots |
| Hydroxyurea | SIGMA | H8627 | Freshly prepared |
| Mitomycin C from Streptomyces caespitosus | SIGMA | M4287 | 1.5mM stock solution in sterile H ₂ O protected from light and stored at 4°C |
| Dimethyl sulfoxide | SIGMA | D2650 | |
| Propidium iodide | SIGMA | P4170 | Stock solution in sterile PBS at 5 mg/ml, stored at 4° C protected from light. |
| PBS pH 7.6 | | | Home made |
| Ethanol | PANREAC | A3678,2500 | |
| Chloroform | SIGMA | C2432 | |
| Sodium Citrate | PANREAC | 131655 | |
| Triton X-100 | SIGMA | T8787 | |
| RNAse A | Thermo Fisher Scientific | EN0531 | |
| TRIzol Reagent | LifeTechnologies | 15596018 | |
| RNeasy Mini kit | QIAGEN | 74106 | |
| High-Capacity cDNA Reverse Transcription Kit | Thermo Fisher Scientific | 4368814 | |
| Anti-Cyclin E1 antibody | Cell Signaling | 4129 | 1:1000 dilution in 5% milk, o/n, 4 °C |
| Anti-Cyclin B1 antibody | Cell Signaling | 4135 | 1:1000 dilution in 5% milk, o/n, 4 °C |
| Anti-β-actin | SIGMA | A-5441 | 1:3000 dilution in 5 % milk, 1 hr, RT |
| Anti-pH3 (Ser 10) antibody | Millipore | 06-570 | Specified in the protocol |
| Secondary anti-rabbit AlexaFluor 488 antibody | Invitrogen | R37116 | Specified in the protocol |

| | | | |
|--|--------------------------|------------|---|
| Secondary anti-mouse-HRP antibody | Santa Cruz Biotechnology | sc-3697 | 1:3000 dilution in 5 % milk, 1 hr, RT |
| Forward E2F1 antibody (human) | | | Designed by PrimerQuest tool |
| TGACATCACCAACGTCCTTGA | Biolegio | | (https://eu.idtdna.com/site) |
| Reverse E2F1 antibody (human) | | | Designed by PrimerQuest tool |
| CTGTGCGAGGTCCTGGGTC | Biolegio | | (https://eu.idtdna.com/site) |
| Forward E2F7 antibody (human) | | | Designed by PrimerQuest tool |
| GGAAAGGCAACAGCAAACCTCT | Biolegio | | (https://eu.idtdna.com/site) |
| Reverse E2F7 antibody (human) | | | Designed by PrimerQuest tool |
| TGGGAGAGCACCAAGAGTAGAAGA | Biolegio | | (https://eu.idtdna.com/site) |
| Forward p21 ^{Cip1} antibody (human) | | | Designed by PrimerQuest tool |
| AGCAGAGGAAGACCATGTGGAC | Biolegio | | (https://eu.idtdna.com/site) |
| Reverse p21 ^{Cip1} antibody (human) | | | Designed by PrimerQuest tool |
| TTTCGACCCTGAGAGTCTCCAG | Biolegio | | (https://eu.idtdna.com/site) |
| Forward TBP antibody (human) reference gene | Biolegio | | Designed by PrimerQuest tool |
| Reverse TBP antibody (human) | Biolegio | | (https://eu.idtdna.com/site) |
| Forward Oxa1L antibody (human) reference gene | | | Designed by PrimerQuest tool |
| CACTTGCCAGAGATCCAGAAG | Biolegio | | (https://eu.idtdna.com/site) |
| Reverse Oxa1L antibody (human) | | | Designed by PrimerQuest tool |
| CACAGGGAGAATGAGAGGTTATAG | Biolegio | | (https://eu.idtdna.com/site) |
| Power SYBRGreen PCR Master Mix | Thermo Fisher Scientific | 4368702 | |
| FACS Tubes | Sarstedt | 551578 | |
| MicroAmp Optical 96-Well Reaction Plate | Thermo Fisher Scientific | N8010560 | |
| Corning 100mm TC-Treated Culture Dish | Corning | | |
| Corning Costar cell culture plates 6 well | Corning | 3506 | |
| Refrigerated Bench-Top Microcentrifuge | Eppendorf | 5415 R | |
| Refrigerated Bench-Top Centrifuge Jouan CR3.12 | Jouan | 743205604 | |
| NanoDrop Lite Spectrophotometer | Thermo Scientific | ND-LITE-PR | |
| BD FACSCalibur Flow Cytometer | BD Bioscience | | |
| QuantStudio 3 Real-Time PCR System | Thermo Fisher Scientific | A28567 | |



1 Alewife Center #200
Cambridge, MA 02140
tel. 617.945.9051
www.jove.com

ARTICLE AND VIDEO LICENSE AGREEMENT

Title of Article:

Studying cell cycle-regulated gene expression by two complementary cell synchronization protocols

Author(s):

Aintzane Apraiz, Jone Mitxelena and Ana M. Zubiaga

Item 1 (check one box): The Author elects to have the Materials be made available (as described at

<http://www.jove.com/author>) via: ☒ Standard Access ☐ Open Access

Item 2 (check one box):

- ☒ The Author is NOT a United States government employee.
- ☐ The Author is a United States government employee and the Materials were prepared in the course of his or her duties as a United States government employee.
- ☐ The Author is a United States government employee but the Materials were NOT prepared in the course of his or her duties as a United States government employee.

ARTICLE AND VIDEO LICENSE AGREEMENT

1. Defined Terms. As used in this Article and Video License Agreement, the following terms shall have the following meanings: “**Agreement**” means this Article and Video License Agreement; “**Article**” means the article specified on the last page of this Agreement, including any associated materials such as texts, figures, tables, artwork, abstracts, or summaries contained therein; “**Author**” means the author who is a signatory to this Agreement; “**Collective Work**” means a work, such as a periodical issue, anthology or encyclopedia, in which the Materials in their entirety in unmodified form, along with a number of other contributions, constituting separate and independent works in themselves, are assembled into a collective whole; “**CRC License**” means the Creative Commons Attribution-Non Commercial-No Derivs 3.0 Unported Agreement, the terms and conditions of which can be found at: <http://creativecommons.org/licenses/by-nc-nd/3.0/legalcode>; “**Derivative Work**” means a work based upon the Materials or upon the Materials and other pre-existing works, such as a translation, musical arrangement, dramatization, fictionalization, motion picture version, sound recording, art reproduction, abridgment, condensation, or any other form in which the Materials may be recast, transformed, or adapted; “**Institution**” means the institution, listed on the last page of this Agreement, by which the Author was employed at the time of the creation of the Materials; “**JoVE**” means MyJoVE Corporation, a Massachusetts corporation and the publisher of *The Journal of Visualized Experiments*; “**Materials**” means the Article and / or the Video; “**Parties**” means the Author and JoVE; “**Video**” means any video(s) made by the Author, alone or in conjunction with any other parties, or by JoVE or its affiliates or agents, individually or in collaboration with the Author or any other parties, incorporating all or any portion of the Article, and in which the Author may or may not appear.

2. Background. The Author, who is the author of the Article, in order to ensure the dissemination and protection of the Article, desires to have the JoVE publish the Article and create and transmit videos based on the Article. In furtherance of such goals, the Parties desire to memorialize in this Agreement the respective rights of each Party in and to the Article and the Video.

3. Grant of Rights in Article. In consideration of JoVE agreeing to publish the Article, the Author hereby grants to JoVE, subject to **Sections 4** and **7** below, the exclusive, royalty-free, perpetual (for the full term of copyright in the Article, including any extensions thereto) license (a) to publish, reproduce, distribute, display and store the Article in all forms, formats and media whether now known or hereafter developed (including without limitation in print, digital and electronic form) throughout the world, (b) to translate the Article into other languages, create adaptations, summaries or extracts of the Article or other Derivative Works (including, without limitation, the Video) or Collective Works based on all or any portion of the Article and exercise all of the rights set forth in (a) above in such translations, adaptations, summaries, extracts, Derivative Works or Collective Works and (c) to license others to do any or all of the above. The foregoing rights may be exercised in all media and formats, whether now known or hereafter devised, and include the right to make such modifications as are technically necessary to exercise the rights in other media and formats. If the “Open Access” box has been checked in **Item 1** above, JoVE and the Author hereby grant to the public all such rights in the Article as provided in, but subject to all limitations and requirements set forth in, the CRC License.

ARTICLE AND VIDEO LICENSE AGREEMENT

4. Retention of Rights in Article. Notwithstanding the exclusive license granted to JoVE in **Section 3** above, the Author shall, with respect to the Article, retain the non-exclusive right to use all or part of the Article for the non-commercial purpose of giving lectures, presentations or teaching classes, and to post a copy of the Article on the Institution's website or the Author's personal website, in each case provided that a link to the Article on the JoVE website is provided and notice of JoVE's copyright in the Article is included. All non-copyright intellectual property rights in and to the Article, such as patent rights, shall remain with the Author.

5. Grant of Rights in Video – Standard Access. This **Section 5** applies if the "Standard Access" box has been checked in **Item 1** above or if no box has been checked in **Item 1** above. In consideration of JoVE agreeing to produce, display or otherwise assist with the Video, the Author hereby acknowledges and agrees that, Subject to **Section 7** below, JoVE is and shall be the sole and exclusive owner of all rights of any nature, including, without limitation, all copyrights, in and to the Video. To the extent that, by law, the Author is deemed, now or at any time in the future, to have any rights of any nature in or to the Video, the Author hereby disclaims all such rights and transfers all such rights to JoVE.

6. Grant of Rights in Video – Open Access. This **Section 6** applies only if the "Open Access" box has been checked in **Item 1** above. In consideration of JoVE agreeing to produce, display or otherwise assist with the Video, the Author hereby grants to JoVE, subject to **Section 7** below, the exclusive, royalty-free, perpetual (for the full term of copyright in the Article, including any extensions thereto) license (a) to publish, reproduce, distribute, display and store the Video in all forms, formats and media whether now known or hereafter developed (including without limitation in print, digital and electronic form) throughout the world, (b) to translate the Video into other languages, create adaptations, summaries or extracts of the Video or other Derivative Works or Collective Works based on all or any portion of the Video and exercise all of the rights set forth in (a) above in such translations, adaptations, summaries, extracts, Derivative Works or Collective Works and (c) to license others to do any or all of the above. The foregoing rights may be exercised in all media and formats, whether now known or hereafter devised, and include the right to make such modifications as are technically necessary to exercise the rights in other media and formats. For any Video to which this Section 6 is applicable, JoVE and the Author hereby grant to the public all such rights in the Video as provided in, but subject to all limitations and requirements set forth in, the CRC License.

7. Government Employees. If the Author is a United States government employee and the Article was prepared in the course of his or her duties as a United States government employee, as indicated in **Item 2** above, and any of the licenses or grants granted by the Author hereunder exceed the scope of the 17 U.S.C. 403, then the rights granted hereunder shall be limited to the maximum rights permitted under such

statute. In such case, all provisions contained herein that are not in conflict with such statute shall remain in full force and effect, and all provisions contained herein that do so conflict shall be deemed to be amended so as to provide to JoVE the maximum rights permissible within such statute.

8. Likeness, Privacy, Personality. The Author hereby grants JoVE the right to use the Author's name, voice, likeness, picture, photograph, image, biography and performance in any way, commercial or otherwise, in connection with the Materials and the sale, promotion and distribution thereof. The Author hereby waives any and all rights he or she may have, relating to his or her appearance in the Video or otherwise relating to the Materials, under all applicable privacy, likeness, personality or similar laws.

9. Author Warranties. The Author represents and warrants that the Article is original, that it has not been published, that the copyright interest is owned by the Author (or, if more than one author is listed at the beginning of this Agreement, by such authors collectively) and has not been assigned, licensed, or otherwise transferred to any other party. The Author represents and warrants that the author(s) listed at the top of this Agreement are the only authors of the Materials. If more than one author is listed at the top of this Agreement and if any such author has not entered into a separate Article and Video License Agreement with JoVE relating to the Materials, the Author represents and warrants that the Author has been authorized by each of the other such authors to execute this Agreement on his or her behalf and to bind him or her with respect to the terms of this Agreement as if each of them had been a party hereto as an Author. The Author warrants that the use, reproduction, distribution, public or private performance or display, and/or modification of all or any portion of the Materials does not and will not violate, infringe and/or misappropriate the patent, trademark, intellectual property or other rights of any third party. The Author represents and warrants that it has and will continue to comply with all government, institutional and other regulations, including, without limitation all institutional, laboratory, hospital, ethical, human and animal treatment, privacy, and all other rules, regulations, laws, procedures or guidelines, applicable to the Materials, and that all research involving human and animal subjects has been approved by the Author's relevant institutional review board.

10. JoVE Discretion. If the Author requests the assistance of JoVE in producing the Video in the Author's facility, the Author shall ensure that the presence of JoVE employees, agents or independent contractors is in accordance with the relevant regulations of the Author's institution. If more than one author is listed at the beginning of this Agreement, JoVE may, in its sole discretion, elect not take any action with respect to the Article until such time as it has received complete, executed Article and Video License Agreements from each such author. JoVE reserves the right, in its absolute and sole discretion and without giving any reason therefore, to accept or decline any work submitted to JoVE. JoVE and its employees, agents and independent contractors shall have

ARTICLE AND VIDEO LICENSE AGREEMENT

full, unfettered access to the facilities of the Author or of the Author's institution as necessary to make the Video, whether actually published or not. JoVE has sole discretion as to the method of making and publishing the Materials, including, without limitation, to all decisions regarding editing, lighting, filming, timing of publication, if any, length, quality, content and the like.

11. **Indemnification.** The Author agrees to indemnify JoVE and/or its successors and assigns from and against any and all claims, costs, and expenses, including attorney's fees, arising out of any breach of any warranty or other representations contained herein. The Author further agrees to indemnify and hold harmless JoVE from and against any and all claims, costs, and expenses, including attorney's fees, resulting from the breach by the Author of any representation or warranty contained herein or from allegations or instances of violation of intellectual property rights, damage to the Author's or the Author's institution's facilities, fraud, libel, defamation, research, equipment, experiments, property damage, personal injury, violations of institutional, laboratory, hospital, ethical, human and animal treatment, privacy or other rules, regulations, laws, procedures or guidelines, liabilities and other losses or damages related in any way to the submission of work to JoVE, making of videos by JoVE, or publication in JoVE or elsewhere by JoVE. The Author shall be responsible for, and shall hold JoVE harmless from, damages caused by lack of sterilization, lack of cleanliness or by contamination due to the making of a video by JoVE its employees, agents or independent contractors. All sterilization, cleanliness or decontamination procedures shall be solely the responsibility of the Author and shall be undertaken at the Author's


expense. All indemnifications provided herein shall include JoVE's attorney's fees and costs related to said losses or damages. Such indemnification and holding harmless shall include such losses or damages incurred by, or in connection with, acts or omissions of JoVE, its employees, agents or independent contractors.

12. **Fees.** To cover the cost incurred for publication, JoVE must receive payment before production and publication the Materials. Payment is due in 21 days of invoice. Should the Materials not be published due to an editorial or production decision, these funds will be returned to the Author. Withdrawal by the Author of any submitted Materials after final peer review approval will result in a US\$1,200 fee to cover pre-production expenses incurred by JoVE. If payment is not received by the completion of filming, production and publication of the Materials will be suspended until payment is received.

13. **Transfer, Governing Law.** This Agreement may be assigned by JoVE and shall inure to the benefits of any of JoVE's successors and assignees. This Agreement shall be governed and construed by the internal laws of the Commonwealth of Massachusetts without giving effect to any conflict of law provision thereunder. This Agreement may be executed in counterparts, each of which shall be deemed an original, but all of which together shall be deemed to be one and the same agreement. A signed copy of this Agreement delivered by facsimile, e-mail or other means of electronic transmission shall be deemed to have the same legal effect as delivery of an original signed copy of this Agreement.

A signed copy of this document must be sent with all new submissions. Only one Agreement required per submission.

CORRESPONDING AUTHOR:

| | | |
|----------------|---|------------------|
| Name: | Ana M. Zubiaga | |
| Department: | Genetics, Physical Anthropology and Animal Physiology | |
| Institution: | University of the Basque Country, UPV/EHU | |
| Article Title: | Studying cell cycle-regulated gene expression by two complementary cell synchronization protocols | |
| Signature: |  | Date: 11-25-2016 |

Please submit a signed and dated copy of this license by one of the following three methods:

- 1) Upload a scanned copy of the document as a pdf on the JoVE submission site;
- 2) Fax the document to +1.866.381.2236;
- 3) Mail the document to JoVE / Attn: JoVE Editorial / 1 Alewife Center #200 / Cambridge, MA 02139

For questions, please email submissions@jove.com or call +1.617.945.9051



Bilbao, 01-02-2017

Dear Editor,

We are submitting the revised version of our manuscript JoVE55745 entitled “**Studying cell cycle-regulated gene expression by two complementary cell synchronization protocols**”. We have carefully read the comments of the reviewers, and have made the required changes. Here is our point-by-point response to the Editorial and Reviewer’s comments.

We hope that you find our revised manuscript acceptable for publication in *JoVE*.

Yours sincerely,

Ana M. Zubiaga, PhD
Professor of Genetics, UPV/EHU

Response to Editorial comments:

1. Please take this opportunity to thoroughly proofread the manuscript to ensure that there are no spelling or grammar issues. The JoVE editor will not copy-edit your manuscript and any errors in the submitted revision may be present in the published version.

- The manuscript has been proofread.

2. Please define all abbreviations before use.

All abbreviations have been defined before use

3. Please use SI abbreviations: h for hours instead of hr (Figure 1, 4B, etc.)

- We have used SI abbreviations.

4. Please remove trademark (™) and registered (®) symbols from the Table of Equipment and Materials.

- We have removed symbols.

5. JoVE cannot publish manuscripts containing commercial language. This includes trademark symbols (™), registered symbols (®), and company names before an instrument or reagent. Please remove all commercial language from your manuscript and use generic terms instead. All commercial products should be sufficiently referenced in the Table of Materials and Reagents.

- We have removed symbols. Products are referenced in the Table of Materials.

6. Please revise the text to avoid the use of any personal pronouns (e.g., "we", "you", "our" etc.).

- We have avoided personal pronouns.

7. The Protocol should contain only action items that direct the reader to do something. Please move the discussion about the protocol to the Discussion.

- We have moved it to Discussion.

8. Please highlight 2.75 pages or less of the Protocol (including headings and spacing) that identifies the essential steps of the protocol for the video, i.e., the steps that should be visualized to tell the most cohesive story of the Protocol. The highlighted steps should form a cohesive narrative with a logical flow from one highlighted step to the next. Remember that non-highlighted Protocol steps will remain in the manuscript, and therefore will still be available to the reader.

- We have highlighted around 2.75 pages of the protocol.

9. Please ensure that the highlighted steps form a cohesive narrative with a logical flow from one highlighted step to the next. Please highlight complete sentences (not parts of sentences). Please ensure that the highlighted part of the step includes at least one action that is written in imperative tense.

- Highlighted steps form a cohesive narrative.

10. As we are a methods journal, please revise the Discussion to explicitly cover the following in detail in 3-6 paragraphs with citations:

- a) Critical steps within the protocol
- b) Any modifications and troubleshooting of the technique
- c) Any limitations of the technique
- d) The significance with respect to existing methods
- e) Any future applications of the technique

11. The current discussion is more of an original research article discussion when it should focus on the methodology.

- We have rewritten the discussion section to focus on methodology, and we have included discussion on critical steps of protocol, troubleshooting, limitations and applications.

Response to Reviewers:

Reviewer #1:

Manuscript Summary:

The authors of this manuscript describe two protocols to synchronize cultures of mammalian cell lines across different phases of the cell cycle. They propose the use of this method for cell cycle -related gene expression studies, such as the analysis of phase-specific transcriptional programs or the study of drug-response mechanisms at the gene expression level.

These protocols are widely used in the cell cycle field and, therefore, their detailed description might be of utility for a significant fraction of the scientific community. In general, the protocols are well explained and with sufficient detail, and all materials and reagents required are detailed in the table of Materials.

Major Concerns:

-The authors claim that Thy-noc protocol is mostly appropriate to study G1 and S phase, whereas HU protocol works better for S, G2 and M phases. However, according to cell cycle profiles shown in Figure 2, a mostly S- phase population is only obtained at 3h release from HU, but not after nocodazole release, as it would also be expected. Could this be due to mitotic slippage in the conditions used for mitotic shake -off? (See also comment on 1.7.1 below). This point should be clarified.

We agree with the reviewer in that an enriched S-phase population is only observed with HU protocol. By contrast, Thy-Noc protocol is best for enrichment of populations in G1 and S-phase entry, but not so good for S and G2 phases (Fox, MH, 2004, *Methods Mol Biol*, 241:11-16). In the revised version of the manuscript, we have modified the text to clarify this point (page 2, line 46; page 14, line 451 and page 17, line 553).

We believe that the main reason for the lack of an enriched S-phase population is a progressive loss of synchronicity. Although we do not discard that mitotic slippage may happen to some extent, the vast majority of the cell population shows a 2C DNA content upon removal of nocodazole, indicating completion of mitosis and correct progression through the next cycle (please see Figure 2A and Figure 3A of the revised manuscript).

-Related to the above point it is very difficult to valuate the actual enrichment in each cell cycle phase without showing the percentage of cells in each phase (Figure 2 and Figure 4). Ideally, an EdU and/or BrdU staining should be included to facilitate the identification of S phase cells. On the other hand, a specific mitotic marker, such as pH3 or MPM-2, should also be included in the FACs analysis to identify the percentage of mitotic cells within the 4n population. This is an important control for the time 0 of thy-noc protocol, at which a pure mitotic population should be obtained after a mitotic shake-off. These stainings across the different time points will also allow to study the reversibility of these protocols, and to ensure no cells left arrested in mitosis or S-phase after release from nocodazole and HU/Thy, respectively.

As pointed out by the reviewer, incorporation of EdU or similar stainings allow the precise determination of cells in S phase. Nevertheless, it increases both, complexity and economic cost especially when large series of time points (e.g. sample collection every 3 h) and conditions (e.g. treatments) are compared. We believe that propidium iodide staining coupled to a FACS analysis software program that discriminates cell cycle phases constitutes an optimal monitoring procedure due to the simplicity of the procedure and to its accuracy in detecting cell cycle phases.

Regarding the population of cells with 4C DNA content, following the suggestion of the reviewer, we have included immunoblot analysis of pH3 levels in cells upon Thy-Noc and HU-based synchronization protocols (Figure 3B of the revised manuscript) and we have performed a new experiment in order to verify the purity of our mitotic population obtained by the Thy-Noc protocol (please note new Figure 2A). In addition, the protocol for pH3 analysis has been included in the Methods section and in the modified Discussion section.

-Different agents allow cells to be arrested at the G1/S transition such as HU, Thymidine or aphidicoline, among others. Why the authors show thy for the first protocol vs HU for the second? It is known that some of these agents such as HU might induce replicative stress. What's the level of damage induced in the conditions described in these protocols? Is it fully reversible? Does it determine the use of any specific G1/S blocker vs. others?

As mentioned in the manuscript and pointed out by the reviewer, drug-mediated synchronization protocols are based on transient inhibition of cell cycle progression and therefore, tightly linked to checkpoint activation. Consequently, HU, as well as other inhibitors of DNA replication such as thymidine or aphidicolin, cause replication stress. In fact, this aspect has been previously mentioned by other authors (e.g. Darzynkiewicz *et al.*, 2011, *Methods Mol Biol.*). In order to minimize this limitation, it is crucial to select experimental conditions that are able to stop progression of the cells at some point of the cell cycle, but also to allow adequate progression once the drug is removed. In the new version of the manuscript we have included some of the optimization experiments that we performed with U2OS cells. As shown in the new Figure 2B, 24h treatment with Thymidine was not as good as HU in arresting cells in G1/S transition. Furthermore, although comparable results were obtained by HU and Double Thymidine treatment, a persistent peak in 2C DNA content (G1 phase) was detected in cells released from Double Thymidine protocol while a proper progression towards S and G2 phases was observed upon removal of HU. These data, suggesting a partial but unresolvable DNA damage and checkpoint activation after the removal of the second thymidine round, led us to the selection of the HU-based method for U2OS cells. In addition, progressively decreasing p21^{Cip1} expression levels (Figure 5B, right graph, of the new version of the manuscript) support the transient nature of the arrest induced by HU as well as the lack of further G2 checkpoint activation. Required changes have been done in the manuscript including a new figure (Figure 2), figure-related representative results (page 11), figure legend (page14) and discussion in the corresponding section (page 16 and 17).

-The protocols described are exclusively based on U2OS cell line. Validation of the synchronization protocol in at least another cell line should be shown. Moreover, limitations and/or variations of these protocols when apply to other cell lines should also be discussed.

Synchronization protocols described in this manuscript have been previously employed in several studies applied to cell lines such as HeLa cells (Westendorp *et al.*, 2011, Liu *et al.*, 2011, Oncogene), thereby validating the protocol. Moreover, their limitations have been discussed in the new version of the manuscript.

Minor Concerns:

-Cell cycle synchronization across different phases may also be monitored by Western-blot analysis as shown in Figure 2B. However, the markers shown in the figure are quite limited. Other cell cycle regulated genes such as Cyclin A, pH3 or geminin for instance should be included to better discriminate among cell cycle phases.

Following the suggestion made by the reviewer, we have added immunoblot data on pH3 levels to the markers previously shown in Figure 2B (now renamed Figure 3B). Cyclin E1 and Cyclin B1 were selected due to their narrow expression window and

distinct expression peaks during the cell cycle, in contrast to Cyclin A or D, which show broader expression patterns in U2OS cells and are not optimal for defining cell cycle phases (Asghar *et al.*, 2015; *Nature Reviews Drug Discovery*).

-FACS software and/or algorithm used for gating cell cycle profiles should be specified (Figures 2 and Figure 4).

Summit V4.3.01 (Dako) was used for FACS data analysis. This information has been included in the revised manuscript (page 14, lines 445, 450 and page 15, line 477).

Additional Comments to Authors:

Specific notes on protocol steps:

1.4. Slight warming might help dissolve thymidine. This could be added as a suggestion/recommendation.

1.7.1. It is important to be careful in the washing steps following collection of detached mitotic cells in nocodazole-containing medium. That means either use PBS-cold for the washing steps and/or add nocodazole to the PBS used for washing, in order to avoid slippage from the mitotic arrest. This can be monitored by FACs, based on PI+pH3 or MPM-2 staining (as discussed above), since a mitotic slippage would result in a fraction of 4n cells, which are negative for the indicated mitotic markers.

We thank the reviewer for the comments made in order to improve the protocols described in the manuscript. All recommendations have been included in the revised version (page 5, line 133 and page 17, line 532).

Reviewer #2:

Manuscript Summary:

In the present manuscript Apraiz and co-workers combine two broadly utilized cell synchronization protocols (hydroxyurea and a double thymidine+nocodazole) for the accurate RT-PCR mediated analysis of gene expression during the cell cycle. This can be applied both for the study of unperturbed cell cycle as well as to evaluate the impact of potential therapeutic agents. For the latter, and given the limited duration of cell synchrony after release, the authors nicely illustrate the need for the combination of both protocols in parallel to identify gene-expression variations that are a direct consequence of the treatment under study. This concept is often overlooked thereby potentially leading to data misinterpretation as also clearly illustrated by the experimental data in Figure 4.

In addition, although both synchronization methods have been extensively used by many laboratories, the authors provide a detailed and clear protocol that will be useful for the optimization of such approach by other investigators. The overall technical quality of the data presented in the manuscript is remarkable but yet I feel that a few modifications could improve the current version.

Major Concerns:

1. As discussed by the authors, neither of the two methods ensures cell synchrony over an entire cell cycle following release. This is a limitation and justifies the combination of both methods when studying oscillations in gene expression in order to select the most appropriate protocol for the gene under study. To further support their claim it would have been nice to actually show that extending the observation time beyond 15 hrs (Figure 3) failed to provide accurate experimental results due to increased population asynchrony. For instance (Figure 3 top right), would the G1 peak in E2F1 expression be detected if the experimental time was extended in the HU release? Likewise, (Figure 3 bottom left), would the E2F7 decrease in late S be properly detected if the experimental time was extended in the Thy-Noc release? I am not asking for these experiments to be performed, but the authors may have actually performed these experiments as part of the original study. If results are already available it would be nice to include them to further support the author's claims.

In agreement with the point mentioned by the reviewer, the original experiment was extended beyond 15 h after release from nocodazole or HU, up to 24 h. However, the 18 h and 24 h time points were excluded from the manuscript due to the clear asynchrony developed by cell populations already at 15 h after release, which was enhanced at later time points. Regarding E2F1 and E2F7 expression profiles at those later time points, we could, in fact, detect a second wave of E2F1 induction and E2F7 reduction. Nonetheless, the amplitude of those expression changes is clearly diminished, which can be at least partially explained by the loss of synchronicity by this time points. In order to complete the information provided in the manuscript, we have included this information in the body of the text (page 12, lines 370 to 375).

2. Standard deviation is missing in experiments 3 and 4B (top panels).

Standard deviation has been included in the experiments mentioned by the reviewer.

Minor Concerns:

Whereas the Cyclin E isoform (E1) analysed in the study is clearly indicated in the figures & legends in the "Representative Results" section is only referred to as Cyclin E. This should be corrected.

Information regarding CyclinE1 has been corrected in the revised manuscript.