

Journal of Visualized Experiments

Phenotypic Analysis of Rodent Malaria Parasite Asexual and Sexual Blood Stages and Mosquito Stages. --Manuscript Draft--

Article Type:	Invited Methods Article - JoVE Produced Video
Manuscript Number:	JoVE55688R4
Full Title:	Phenotypic Analysis of Rodent Malaria Parasite Asexual and Sexual Blood Stages and Mosquito Stages.
Keywords:	Malaria; Plasmodium berghei; Plasmodium yoelii; Anopheles, blood stages; gametocytes; exflagellation; ookinetes; oocysts; sporozoites and liver stages.
Corresponding Author:	Ahmed S. I. Aly Tulane University School of Public Health and Tropical Medicine New Orleans, LA UNITED STATES
Corresponding Author's Institution:	Tulane University School of Public Health and Tropical Medicine
Corresponding Author E-Mail:	aaly@tulane.edu;ahmed.aly@bezmialem.edu.tr
Order of Authors:	Ahmed S. I. Aly Amanah Abraham Aneesah Golshan Robert J. Hart
Additional Information:	
Question	Response
Please indicate whether this article will be Standard Access or Open Access.	Standard Access (US\$2,400)
Please indicate the city, state/province, and country where this article will be filmed . Please do not use abbreviations.	Bezmialem Vakif University, Beykoz Institute of Life Sciences and Biotechnology, Istanbul- Beykoz 34820, Turkey.

TITLE:

Phenotypic Analysis of Rodent Malaria Parasite Asexual and Sexual Blood Stages and Mosquito Stages

AUTHORS AND AFFILIATIONS:

Ahmed S. I. Aly^{1,2}, Gozde Deveci¹, Ilknur Yilmaz¹, Amanah Abraham², Aneesa Golshan² *, Robert J. Hart² *

¹Bezmialem Vakif University, Beykoz Institute of Life Sciences and Biotechnology, Istanbul, Turkey

²Tulane University, School of Public Health and Tropical Medicine, Department of Tropical Medicine, New Orleans, LA, USA

* These authors contributed equally to this manuscript.

Corresponding Author:

Ahmed S. I. Aly (ahmed.aly@bezmialem.edu.tr)

Email Addresses of Co-Authors:

godeveci@bezmialem.edu.tr

aabraham@tulane.edu

agolshan@tulane.edu

rhart@tulane.edu

KEYWORDS:

Malaria, *Plasmodium berghei*, *Plasmodium yoelii*, *Anopheles*, blood stages, gametocytes, exflagellation, ookinetes, oocysts, sporozoites, liver stages

SUMMARY:

Due to the striking similarities of the life cycle and biology of rodent malaria parasites to human malaria parasites, rodent malaria models have become indispensable for malaria research. Herein, we standardized some of the most important techniques used in the phenotypic analysis of wild-type and transgenic rodent malaria species.

ABSTRACT:

Recent advances in genetics and systems biology technologies have promoted our understanding of the biology of malaria parasites on the molecular level. However, effective malaria parasite targets for vaccine and chemotherapy development are still limited. This is largely due to the unavailability of relevant and practical *in vivo* infection models for human *Plasmodium* species, most notably for *P. falciparum* and *P. vivax*. Therefore, rodent malaria species have been extensively used as practical alternative *in vivo* models for malaria vaccine, drug targeting, immune response, and functional characterization studies of conserved *Plasmodium spp.* genes. Indeed, rodent malaria models have proven to be invaluable, especially for exploring mosquito transmission and liver stage biology, and were indispensable for immunological studies. However, there are discrepancies in the methods used to evaluate the phenotypes of transgenic

and wild-type asexual and sexual blood-stage parasites. Examples of these discrepancies are the choice of an intravenous vs. intraperitoneal infection of rodents with blood-stage parasites and the evaluation of male gamete exflagellation. Herein, we detail standardized experimental methods to evaluate the phenotypes of asexual and sexual blood stages in transgenic parasites expressing reporter-gene or wild-type rodent malaria parasite species. We also detail the methods to evaluate the phenotypes of malaria parasite mosquito stages (gametes, ookinetes, oocysts, and sporozoites) inside *Anopheles* mosquito vectors. These methods are detailed and simplified here for the lethal and non-lethal strains of *P. berghei* and *P. yoelii* but can also be applied with some adjustments to *P. chabaudi* and *P. vinckei* rodent malaria species.

INTRODUCTION:

Malaria parasites cause hundreds of millions of malaria infections in humans worldwide, with more than 600,000 deaths every year¹. Human infections are caused by five malaria parasite species, namely *P. falciparum*, *P. vivax*, *P. ovale*, *P. malariae*, and *P. knowlesi*. Most clinical malaria mortalities are caused by *P. falciparum* in sub-Saharan Africa¹. Another human malaria parasite species that causes extensive worldwide morbidities outside of sub-Saharan Africa is *P. vivax*². The other three species are all more geographically restricted and cause benign malaria infections, except the lethal *P. knowlesi*³. The unavailability of relevant and practical non-human *in vivo* models of infections has always been and still is an obstacle to malaria vaccine and drug development. Earlier malaria drug targeting and metabolic studies have relied extensively on avian malaria models like *P. gallinaceum* and *P. lophurae*, infecting chickens and ducks, respectively⁴. Thereafter, rodent malaria species were gradually introduced in various vaccines and drug targeting studies as *in vivo* models. Over the years, evidence of similarities of the biology and host-parasite interactions of life cycle stages of rodent malaria models to human malaria species have accumulated.

In particular, rodent malaria models were extremely important to explore and characterize the biology of mosquito and pre-erythrocytic stages⁵. However, there are four rodent malaria species (*P. berghei*, *P. yoelii*, *P. chabaudi*, and *P. vinckei*) that have different biological features, the most notable of which are in the blood stages⁶. Rodent malaria species differ in the synchronicity of blood stages, where blood stages of *P. chabaudi* and *P. vinckei* strains are mostly synchronous, while the blood stages of *P. berghei* and *P. yoelii* are not^{6,7}. Another notable difference is the self-clearance of blood stages that occurs in some strains (e.g., *P. yoelii* 17X-NL, *P. berghei* NK65, and *P. vinckei* *lentum*), whereas the blood infection of other strains of the same species could be lethal if left untreated (*P. yoelii* 17X-L, *P. berghei* ANKA, and *P. chabaudi* AS). Moreover, *P. yoelii* 17X-NL strain and *P. berghei* ANKA strain preferentially invade reticulocytes⁸⁻¹¹, although these features of *P. yoelii* and *P. berghei* strains are not a strict growth requirement¹²⁻¹⁴. Therefore, mice are treated with phenylhydrazine prior to an infection with the blood stages of those parasites to increase the parasitemia and gametocytemia needed for a mosquito infection for the *P. berghei* ANKA strain and for *P. yoelii* 17X-NL¹⁵⁻¹⁹.

Differences in mosquito stages development also exist among different rodent malaria species, the most notable being the temperature and time required for optimal mosquito stages development and the sporozoite length^{5,6,20}. In pre-erythrocytic stages of rodent malaria species,

differences include the rodent species and strain that are most susceptible to infectious sporozoite inoculation, the number of sporozoites needed for inoculation in a susceptible rodent strain, the mammalian cell types needed for *in vitro* liver stage development assays, and the time to complete liver stage development^{5,21-30}.

Despite these variabilities, rodent malaria parasites were the favorable models early on for the application of reverse genetic approaches, because they were less time- and resource-consuming with a high probability of success³¹. In fact, rodent malaria models were the best models, and in many instances the only models, available for numerous years to functionally characterize genes expressed in mosquito and liver stages.

In light of the popularity and amenability of reverse genetic approaches in rodent malaria models, a number of different methodologies have been utilized to analyze the phenotypes of transgenic parasite life cycle stages, especially blood stages. However, some of these methodologies are inconsistent; for instance, comparing infections of blood-stage parasites following an IP injection (which are possibly drained to the peritoneal lymph nodes and, from there, can enter the bloodstream; therefore, the injected parasites do not end up equally in the bloodstream), comparing the mosquito transmission of clones with a different number of serial blood-stage transfers or G number (which could affect gametocytogenesis^{32,33}), or comparing transgenic parasites directly to naive wild-type (WT) parasites that were never subjected to electroporation and positive drug selection and the various unstandardized evaluations of male gamete exflagellation. Therefore, it is crucial to standardize protocols that are simple to follow for the phenotypic analysis of any type of transgenic or WT rodent malaria parasites in the blood and in the mosquito to accommodate for the biological variabilities of rodent malaria parasite species.

Herein, we report on a standardized, detailed experimental protocol for the phenotypic analysis of the blood and mosquito life cycle stages of transgenic or wild-type *P. yoelii* and *P. berghei* parasites. These protocols are also applicable to *P. chabaudi* and *P. vinckei* parasites.

PROTOCOL:

All animal experiments described here were conducted according to the approved protocols of the Institutional Animal Care and Use Committee (IACUC) of Tulane University. All other experimental protocols and the use of recombinant DNA were conducted according to the approved protocols of the Institutional Biosafety Committee (IBC) of Tulane University.

1. Infection of Mice with Blood-stage Parasites for Parasitemia Analysis and Mosquito Infection Assays

1.1. Day -3: optional injection of phenylhydrazine into recipient mice

1.1.1. Inject outbred SW or CD1 recipient mice (mice that will be used for mosquito infection and mosquito infection assays) intraperitoneally (IP) with 100 µL of phenylhydrazine (50 mg of phenylhydrazine in 5 mL of 1x phosphate-buffered saline (PBS)) using a 26-G needle syringe.

Note: For robust mosquito infections of *P. berghei* and *P. yoelii*, phenylhydrazine is used to induce reticulocytosis in the recipient mice, which increases the parasitemia and, subsequently, the percentage of gametocytes, and significantly increases the exflagellation of male gametes (Figure 5), which will lead to a better mosquito stages infection for both *P. berghei* and *P. yoelii* strains¹⁵⁻¹⁸.

1.2. Day -2: injection of frozen parasite stocks into donor mice

1.2.1. Quickly thaw cryopreserved frozen stocks and immediately inject each donor mouse (typically two mice per genotype) IP with ~200 µL of stock using a 26-G needle syringe.

Note: No more than five mice are housed per cage within controlled vivarium settings.

1.2.2. Start checking parasitemia under a 100X microscope objective on Giemsa-stained thin blood smear after 24 h postinfection. Follow section 2.1 of the protocol for Giemsa-stained thin blood smears.

Note: Due to the inability to precisely count the surviving viable blood stages after quickly thawing and injecting cryopreserved infected blood, donor mice receive the cryopreserved blood first. The infected erythrocytes of the donor mouse can be precisely quantified and used subsequently.

1.3. Day 0: bleeding of the donor mice

1.3.1. Bleed the donor mice (see section 3.1) when their parasitemia is between 0.1% and 1%, which is usually obtained 2 - 3 d post-frozen-stock-infection in the case of *P. yoelii* 17X-NL and *P. berghei* ANKA strains.

1.3.2. Use the facial vein puncture (to get between 200 and 500 µL), or terminally bleed the animals by heart puncture (to get between 600 µL and 1.2 mL) of infected blood. Terminally bleed the mice by heart puncture as described in detail in section 3.1.

Note: Facial vein bleeding is not a routine method of obtaining blood as it is much more difficult to apply and is very distressful to mice, compared to terminal bleeding. The optimal parasitemia for the bleeding of donor mice is between 0.1% - 1% because, at this parasitemia range, there are very few gametocytes (which cannot replicate to produce asexual blood stages) and there are less double- or triple-infected erythrocytes (which makes the quantification less accurate).

1.4. Day 0: quantification of infected blood to prepare doses of infected erythrocytes by serial dilutions

1.4.1. Prepare serial dilutions of donor blood by adding 100 µL of blood to a microcentrifuge tube (dilution tube 1). Add 900 µL of RPMI medium to tube 1 and mix well by pipetting up and down with the same pipette tip, creating a 1:10 dilution.

1.4.2. Take 100 μ L of the diluted blood from tube 1 and add it to a new microcentrifuge tube (dilution tube 2). Add 900 μ L of RPMI medium to tube 2 and mix well by pipetting up and down with the same pipette tip, creating a 1:100 dilution.

1.4.3. Repeat steps 1.4.1 and 1.4.2 to make two more serial dilutions, creating 1:1,000 (dilution tube 3) and 1:10,000 dilutions (dilution tube 4).

1.4.4. Add 12 μ L of diluted blood from tube 3 and 12 μ L of diluted blood from tube 4 to different sides of a hemocytometer and determine the average number of erythrocytes on each side of the hemocytometer. Multiply these numbers by 10. Multiply these numbers by the dilution factor, 1,000 or 10,000, respectively, to determine the number of erythrocytes in 1 μ L of each dilution.

1.4.5. Divide the desired number of infected erythrocytes to be injected by the number of erythrocytes in 1 μ L of each dilution to determine the volume of diluted donor blood necessary for injection. Choose the dilution with the most appropriate volume for injection, add the volume to a new microcentrifuge tube, and complete it to 120 μ L with RPMI medium.

1.5. Day 0: intravenous injection of the recipient mice

1.5.1. Place the recipient mice under a heat red lamp to dilate their veins for injection. Load the parasite doses in a 27-G insulin syringe and place the recipient mouse in a restrainer.

1.5.2. Inject 1 million or 10,000 infected erythrocytes intravenously (IV) using the 27-G insulin syringe in each recipient mouse for mosquito infection assays or for asexual and sexual blood-stage growth assays, respectively. Continue to maintain the mice under standard housing conditions.

Note: An IP injection is an indirect method of introducing parasites into the bloodstream, as parasitized erythrocytes have to pass through the draining lymph nodes of the peritoneal cavity to reach the blood. This makes an IP injection an indirect delivery route for injecting a precise number of parasites into the bloodstream. Therefore, the IV route is preferred, as it delivers accurate parasite doses directly into the bloodstream, as shown in **Figure 3** and described in the **Representative Results**.

2. Determination of the Blood-stage Parasite Load for Sexual and Asexual Stages

Note: In this section, standardized phenotypic evaluation methods of malaria parasite blood stages are listed. These methods are useful in the evaluation of novel antimalarial or vaccine candidates or even gene knockout on sexual and asexual stages development in the same experimental mice. Of note, *P. chabaudi* and *P. vinckei* are also very rational and important alternative options for these types of assays, especially in drug screening.

2.1. Determination of the parasitemia of asexual stages and male vs. female gametocytes by Giemsa-stained thin blood smears for parasite growth assays

2.1.1. Using a 26-G or 24-G needle, prick the mouse's tail and collect the blood droplet on a microscope slide. Use the short edge of another microscope slide to quickly smear the blood across the slide.

2.1.2. Fix the slide with 100% methanol for at least 1 min, only after the blood has completely dried on the slide. Stain in 10% Giemsa for 10 - 15 min. Wash the slide with single- or double-distilled water and allow it to dry.

2.1.3. Read the slide using a 100X objective and oil immersion under a light microscope. For an accurate parasitemia measurement, check at least a total of 6,000 erythrocytes, which can be obtained by counting at least 30 or 40 microscopic grids with an average number of 200 or 150 erythrocytes (RBCs) per grid, respectively. Count the total number of RBCs in the first and last grids to determine the average number of red blood cells for all grids.

2.1.4. Count the total number of infected erythrocytes per grid. Male and female gametocytes can be counted separately to determine gametocytemia but should also be included in the total parasitemia count.

2.1.5. Determine the total parasitemia percentage by dividing the total number of parasitized erythrocytes by the total number of RBCs observed. Multiply this number by 100 to determine the parasitemia percentage.

2.1.6. Determine the gametocytemia by dividing the total number of gametocytes counted by the total number of RBCs observed. Multiply this number by 100 to determine the gametocytemia percentage per mouse.

Note: The only reliable method of differentiation between different asexual and sexual blood stages is the use of a microscope to evaluate Giemsa-stained thin blood smears, as each of the stages has different morphology, with the exception of immature gametocytes, which are mostly indistinguishable from asexual blood stages.

2.2. Determination of the blood-stage parasitemia by flow cytometry for fluorescent reporter protein-expressing WT-like parasite strains

2.2.1. Label two microcentrifuge tubes for each mouse sample, designating one tube for a 1:1,000 dilution and the other for a 1:2,000 dilution. Add 1.5 μ L of 1x heparin to the 1:1,000 dilution tube.

2.2.2. Using a 26-G or 27-G needle, prick the mouse's tail and transfer 1.5 μ L of blood to the tube containing 1.5 μ L of 1x heparin (the 1:1,000 dilution tube). Mix the blood and the 1x heparin gently together by pipetting up and down.

2.2.3. Add 1,497 μ L of RPMI medium to the microcentrifuge tube, and gently pipette up and down to mix well.

2.2.4. Transfer 500 μ L of the mixture from the 1:1,000 dilution tube to the 1:2,000 dilution tube. Add 500 μ L of RPMI medium to the 1:2,000 tube and gently mix by pipetting up and down.

2.2.5. Follow the manufacturer's appropriate start-up protocol for the flow cytometer. Run the samples at a slow flow rate and set the detection for at least 20,000 events.

Note: There is an alternative practical assay to measure parasitemia *via* tricolor FACS sorting, whether parasites express fluorescent markers or not³⁴. However, the assay described here offers an accurate measure of parasitemia in live parasites without the addition of any DNA-binding dyes and the use of FACS sorting.

2.3. Determination of the exflagellation rate of male gametes per microliter of infected mouse blood

2.3.1. Prepare a 1:10 dilution microcentrifuge tube with 40 μ L of incomplete ookinete medium (RPMI + sodium bicarbonate + hypoxanthine + xanthurenic acid) and 5 μ L of 1x heparin.

2.3.2. Using a 26-G or 27-G needle, prick the mouse's tail and transfer 5 μ L of blood (using a micropipette) quickly to the tube containing the incomplete ookinete media + heparin. Mix gently and load 12 μ L of the 1:10 blood dilution tube onto a hemocytometer and leave it at room temperature (20 - 24 $^{\circ}$ C).

2.3.3. Start counting the exflagellation events 9 - 10 min after preparing the 1:10 dilution. Use a phase contrast light microscope with 40X magnification.

2.3.4. Multiply the average number of exflagellation events counted by 10 and then multiply by the dilution factor (10) to determine the average number of exflagellation per microliter of infected blood.

Note: This assay measures the number of male gamete exflagellation events in a 1- μ L volume of blood, which can be quantified using a hemocytometer. An incomplete ookinete medium¹⁸ is mixed with the blood to closely mimic the conditions during which exflagellation occurs inside the mosquito midgut shortly after a blood meal.

3. Isolation and Processing of Blood-stage Parasites from Infected Erythrocytes and Frozen Stock Preparation

3.1. Terminal bleeding of infected rodents by heart puncture

3.1.1. Prepare a 26-G needle syringe that contains approximately ≤ 20 μ L of 1x heparin (200 units/ml) to collect the blood of the donor mouse by heart puncture.

3.1.2. Use a slow flow of CO₂ to euthanize the mouse before bleeding. Alternatively, anesthetize the mouse with isoflurane (which has to be maintained before and during the heart puncture).

3.1.3. Lay the mouse on its back and pin down its appendages. Make a small incision in the skin near the base of the sternum by pulling up the skin with forceps and cutting it with scissors. Pull the skin apart at the site of the incision to expose the diaphragm and the top of the abdominal cavity.

3.1.4. Hold the base of the rib cage with forceps and cut through the diaphragm to enter the thoracic cavity; be careful not to damage the heart or lungs. Pin back the rib cage to expose the heart.

3.1.5. Gently puncture the heart and slowly pull up on the syringe plunger to collect ~1 mL of blood and transfer it to a microcentrifuge tube.

3.2. Preparation of frozen stocks from infected blood

3.2.1. Bleed the mice (see section 3.1) with blood parasitemias that are between about 2% and 5%, with a significant amount of ring stages and not as many gametocytes.

3.2.2. Mix the desired portion of blood with freezing solution (10% glycerol in Alsever's solution) in a 1:2 ratio and store in cryogenic vials. Freeze in liquid nitrogen.

3.3. Isolation and purification of blood-stage parasites for the extraction of DNA, RNA, and proteins

3.3.1. Bleed mice (see section 3.1) with blood parasitemias that are higher than 0.5%.

3.3.2. Prepare a 10-mL syringe by removing the plunger and inserting a small cotton swab. Pack down the cotton to the bottom of the syringe. Fill it with cellulose until the level of cellulose reaches the 3-mL mark but does not exceed the 4-mL mark on the syringe.

3.3.3. Secure the syringe into a clip on a ring stand and place a waste collection tube below it. Add 5 mL of PBS to the syringe and allow it to flow through into the waste tube.

3.3.4. Prepare frozen stocks if needed, using only 100 - 300 µL of blood. Add the rest of the infected blood (400 - 700 µL) to the column. Collect flow through with a waste tube until the droplets start to turn red. Once the droplets start to turn red, place a new 14-mL collection tube under the syringe to collect the flow through.

3.3.5. Once the flow starts to slow, add PBS to the syringe and collect the flow through in the 15-mL tube until a total volume of 14 mL has been reached. Collect the remaining flow through with a waste tube.

3.3.6. Centrifuge the 14-mL tube with blood/PBS mixture for 8 min at 250 x *g* with no brakes. Remove the supernatant and add 14 mL of chilled saponin (50 mg of saponin in 50 mL of PBS). To dislodge the pellet, invert the tube multiple times and vortex if necessary.

3.3.7. Centrifuge the tube for 8 min at 1217 x *g* with no brakes. Remove the supernatant, leaving about 0.5 mL of the solution above the pellet.

3.3.8. Resuspend the pellet in the solution using a micropipette and transfer it to a microcentrifuge tube. Add 500 µL of PBS to the 14-mL tube to wash any residual parasites that are left in the tube. Add this to the same microcentrifuge tube.

3.3.9. Centrifuge the tube for 2 min at 6010 x *g*. Remove the supernatant and resuspend 1 mL of PBS. Centrifuge for 2 min at 9391 x *g*.

3.3.10. Proceed to extract genomic DNA, total RNA, and protein.

3.3.10.1. For **genomic DNA extraction**, remove the supernatant and resuspend the pellet in 200 µL of PBS, and then follow any suitable protocol of gDNA extraction.

3.3.10.2. For **total RNA extraction**, remove the supernatant, resuspend and vortex the pellet in 1 mL of any phenol- and guanidine isothiocyanate-based solution or any other suitable reagent and, then, follow any suitable protocol of total RNA extraction.

3.3.10.3. For **total protein extraction**, remove the supernatant, resuspend the pellet in an appropriate volume of 6x sodium dodecyl sulfate (SDS)-loading dye or any other suitable reagent and, then, follow any suitable protocol of total protein processing.

4. Mosquito Infection Assays

Note: The mosquito is the primary host of the malaria parasites where sexual reproduction takes place. The infection of mice to transmit malaria parasites to mosquitoes is conducted by an IV injection of at least 1 million blood stages, followed by feeding an infected mouse (from each genotype that displays the highest male gamete exflagellation rate) to *Anopheles* mosquitoes in a cage at day 3 post-mouse-infection. The IV injection with 1 million blood-stage parasites in phenylhydrazine-treated mice will ensure the development of male and female gametocyte at a faster and higher rate. Mosquitoes infected with *P. yoelii* and *P. berghei* are incubated at 24 °C and 20 - 22 °C, respectively, to allow for the best possible mosquito stages development⁶.

4.1. Mosquito feeding and determination of the number of ookinetes per mosquito

4.1.1. Starve adult female *Anopheles stephensi* or *A. gambiae* mosquitoes (4 - 7 days old) for 8 - 12 h prior to feeding. Allow adult mosquitoes to feed for at least 15 min on the infected

anesthetized mice (injected with an appropriate dose of ketamine/xylazine) with the highest exflagellation rate (measured in section 2.3).

Note: Ketamine/xylazine working solution is prepared by the 1:5 dilution of the stock solution in saline and IP injecting 100 μ L per mouse. For a 10-mL stock solution, 1 mL of xylazine (100 mg/mL) is added to 9 mL of ketamine (100 mg/mL).

4.1.2. Remove unfed female mosquitoes and male mosquitoes with a mouth aspirator.

4.1.3. At 18 - 20 h postfeeding, collect 20 - 30 mosquitos and place them in the freezer for no longer than 5 min to ensure death. Using a binocular dissection scope, dissect out 20 - 30 blood-filled midguts with two 26-G or 27-G needles or a needle and forceps in RPMI or PBS dissection medium and transfer the midguts to a microcentrifuge tube containing 200 μ L of RPMI medium.

4.1.4. Centrifuge the collection tube for 1 min at 4,000 $\times g$. Grind the pelleted midguts using a pestle. Repeat this step.

4.1.5. Transfer 50 μ L from the tube of ground midguts to a new microcentrifuge tube. Add 200 μ L of RPMI medium to create a 1:5 dilution.

4.1.6. Transfer 12 μ L to a hemocytometer and incubate it at room temperature for 5 min to allow the contents to settle.

4.1.7. Determine the average number of ookinetes by using a light microscope with a phase contrast and 40X magnification.

4.1.8. Multiply the average number of mature ookinetes by 10 and then by the dilution factor of 5 to determine the average total number of ookinetes.

4.1.9. Divide the average number of ookinetes by the number of blood-fed mosquitoes dissected to determine the number of ookinetes per blood-fed mosquito.

4.2. Determination of the number of early oocysts for fluorescent reporter protein-expressing WT-like parasite strains

Note: The aim of this assay is to determine the number of live parasites expressing green fluorescent protein (GFP) that established a full infection of the mosquito midguts and formed early spherical oocysts. This assay determines if the ookinetes (their development estimated in the previous assay) completed their functions by the traversal through the mosquito midgut epithelial cells and the transformation to early oocysts on the basal lamina side of the midgut epithelia or not. This is another assay which makes great use of the parasites expressing GFP, as counting early oocysts at this stage will be nearly impossible without tedious immunostaining.

4.2.1. Dissect the midguts (see section 4.1) of 20 - 30 blood-fed mosquitoes, at day 3 or 4 post-mosquito-feeding (pmf) for *P. yoelii* 17X-NL, and at day 6 or 7 pmf for *P. berghei* ANKA, with two 26-G or 27-G needles or a needle and forceps in RPMI or PBS dissection medium.

4.2.2. Hold the thorax in place with one needle (or forceps) and carefully pull away the abdomen with the other needle. The midgut should remain attached to the thorax after the removal of the abdomen. Separate the midgut from the thorax using a needle.

4.2.3. Spread 40 - 50 μ L of sterile dissection medium on the horizontal midline of the longer edge of the glass slide. Transfer the midguts to this line, one at a time, during dissection.

4.2.4. Place a coverslip gently on the dissected midguts, and seal it with nail polish.

4.2.5. Using the 10X or 20X objective of the fluorescence microscope with the green fluorescence filter, count the number of early oocysts on each midgut, in at least 20 midguts.

4.3. Determination of the number of oocyst sporozoites per mosquito

4.3.1. Dissect the midguts of at least 20 - 30 mosquitoes with two 26-G needles or a needle and forceps in RPMI or PBS dissection medium and collect the dissected midguts in 200 μ L of RPMI.

4.3.2. Hold the thorax in place with one needle (or forceps) and carefully cut, then pull away the abdomen with the other needle. The midgut should remain attached to the thorax after the removal of the abdomen. Cut the midgut away and transfer the midguts of all mosquitoes to the collection tube by collecting them from the medium with a needle.

4.3.3. Centrifuge the collection tube for 1 min at 94 x *g* to settle the midguts to the bottom of the collection tube and grind them with a pestle. Repeat this step.

4.3.4. Transfer 12 μ L to a hemocytometer and incubate it at room temperature for 5 min to allow its contents to settle.

4.3.5. Count the oocyst sporozoites using a 40X objective of a light microscope. Use 1:5 and/or 1:10 dilutions if mosquito debris prevents the precise counting of the sporozoites or if the number of sporozoites is too high to count accurately.

4.3.6. Calculate the average total number of oocyst sporozoites by multiplying the average number of sporozoites by 10 and, then, multiplying that number by the dilution factor and the total volume (200 μ L).

4.3.7. Divide the average total number of sporozoites by the number of mosquitoes dissected to calculate the average number of oocyst sporozoites per mosquito.

Note: A common mistake for measuring the success or productivity of mosquito stages infection is the counting of the number of oocysts at later stages of oocyst development. This is due to some oocysts being vacuolated at later time points of oocyst development, and others fail to develop sporozoites, even on the same midgut. The best and most reliable method to determine the productivity of mosquito stages infection is the counting of the average number of midgut oocyst sporozoites at days 10 - 12 post-mosquito-infection for *P. yoelii* and at days 12 - 14 post-mosquito-infection for *P. berghei*.

4.4. Determination of the number of salivary gland sporozoites per mosquito

Note: The ultimate evaluation of the full completion of mosquito stages development is accomplished by estimating the number of sporozoites that invaded the salivary gland, which are the transmissible and infectious stages to vertebrates. The invasion of the salivary gland is established after the completion of oocyst sporozoite development, egress into the hemolymph, attachment to the basal lamina of the salivary gland acinar cells, and traversal of the acinar cells to reach the salivary glands ducts⁵. Therefore, this assay is also an evaluation of the success of all of these processes or not. Nonetheless, an estimation of hemolymph sporozoite numbers would allow the differentiation between defects in the egress from oocysts and defects in the invasion of salivary glands³⁵. The purification of salivary gland sporozoites allows conducting multiple functional assays on sporozoite motility and invasion phenotypes. The salivary gland sporozoites can also be used for the *in vivo* infection of mice and in immunization studies^{36,37}. Moreover, the most reproducible stages available to establish an *in vitro* liver stage invasion or a development assay is by the use of salivary gland sporozoites.

4.4.1. Dissect the salivary glands of 50 - 100 female mosquitoes (see section 4.1), at days 14 - 16 pmf for *P. yoelii* and at days 17 - 20 pmf for *P. berghei*, preferably with two 26-G or 27-G needles, in RPMI or DMEM medium kept on ice and supplemented with 5% fetal bovine serum (FBS)/bovine serum albumin (BSA) for *P. yoelii* sporozoites or 3% FBS/BSA for *P. berghei* sporozoites. If the sporozoites are to be used in hepatoma *in vitro* assays, add 1% penicillin/streptomycin to the dissection medium.

4.4.2. Separate the head of the mosquito from the thorax with the side of the needle without applying any pressure to the thorax.

4.4.3. With the back of the beveled part of the needle, apply pressure to the anterior side of the thorax. Collect the whitish material that oozes from the neck using a short glass Pasteur pipette and transfer it to a microcentrifuge tube. Repeat this step for all mosquitoes.

4.4.4. Centrifuge the collection tube for 1 min at 845 x *g* to pellet the thoracic tissue masses. Transfer any medium that exceeds ~300 µL to another tube to use when washing the sporozoites.

4.4.5. Grind the thoracic tissue masses using a pestle. Centrifuge again at for 1 min at 845 x *g* and regrind it with a pestle. Transfer all the contents to an Ozaki method tube after wetting the

tube first with 200 μ L of RPMI medium³⁸.

Note: The Ozaki method tube is a 600- μ L microcentrifuge tube perforated at its bottom by a 21-G needle and stuffed with a small ball of fiberglass wool and placed in a 1.5- or 2-mL microcentrifuge tube.

4.4.6. Centrifuge for 2 min at 845 x *g* and collect the flow through in a new tube. Wash the tube with the excess collection medium with ≥ 300 μ L of RPMI medium (volume equivalent to the first flow through). Combine the flow through with the flow through from the previous step.

4.4.7. Count sporozoites using a hemocytometer under a light microscope set to Phase 2 contrast and 40X magnification. If the number of the mosquitos dissected ≥ 40 , dilute the salivary glands to 1:5 or 1:10, depending on the expected infectivity yield (determined in earlier assays).

4.4.8. Multiply the average number of sporozoites by 10 and the dilution factor (if any). Multiply by the total volume to determine the average number of salivary gland sporozoites. Divide by the number of dissected female mosquitoes to determine the average salivary gland sporozoites per mosquito.

Note: The problem with the dissection of the salivary glands is their small size and glassy transparent appearance. Thus, it is very difficult to isolate the salivary glands and, therefore, they are usually dissected out as a lump sum with other tissues from the frontal part of the thorax, which is also important to protect the salivary glands from rupture during the collection.

REPRESENTATIVE RESULTS:

The success of applying reverse genetic tools and techniques to malaria parasites has revolutionized the field of malaria research, with the ability to add, delete, or modify specific genomic segments of several *Plasmodium* species³⁹. Importantly, dispensable genomic loci have been identified and used successfully to introduce fluorescence protein markers in rodent and human malaria parasites by double homologous recombination, to ensure a stable expression in all life cycle stages⁴⁰⁻⁴². An example of these WT-like transgenic parasites is *Py230p(-)* parasites, which have been generated in our lab, and showed no apparent defect in the development of blood and mosquito life cycle stages¹⁵⁻¹⁷. These transgenic reporter parasites expressed eGFP, under the control of the strong and constitutive promoter of *PyHSP70*, in blood stages (**Figure 1A**) ookinetes (**Figure 1B**), young oocysts (**Figure 1C**) on *Anopheles stephensi* midguts, and in sporozoites isolated from the salivary glands of *Anopheles stephensi* females (**Figure 1D**). Thus, the eGFP-expressing blood parasites made it much easier and less time-consuming to evaluate blood-stage parasitemia using flow cytometry between different genotypes of transgenic parasites or between drug-treated and -untreated in drug-targeting assays using transgenic reporter parasites.

In order to confirm that there is no quantitative difference between the use of flow cytometry and the more tedious parasitemia estimation by microscopy, the eGFP-expressing *Pyp230p(-)* was used to estimate the percentage of parasitized erythrocytes by flow cytometry and by

Giemsa-stained thin blood smear in a group of Swiss Webster mice IV-infected with 10,000 parasitized erythrocytes. The flow cytometry parasitemia% values corresponded directly to the estimated parasitemia% by monitoring Giemsa-stained thin blood smears, which were estimated by two expert scientists (**Figure 2**). This represents a more accurate alternative to the tedious and prone-to-human-error method of microscopy in the determination of the growth rate of blood-stage parasites.

An important discrepancy associated with the infection of rodents with malaria parasites blood stages is the choice of route of infection, with a strong preference in the literature for the IP compared to IV route of infection, as it is less time-consuming. In order to compare these two routes of infection, two groups of five BALB/c mice were infected with 1,000 eGFP-expressing *Pyp230p(-)* parasitized erythrocytes per mouse, either through IV or IP routes. The parasitemia was monitored daily using flow cytometry for a period of 4 days. A statistically significant decrease in the IP-infected group parasitemia% compared to the IV-infected group was noted on all days tested (**Figure 3**). This provides evidence that the IV infection route is a more quantitatively accurate route of infection for assays with the malaria parasite blood stages.

Nonetheless, one limitation to the use of flow cytometry to evaluate blood-stage parasitemia is the differentiation between sexual and asexual stages and between male and female gametocytes. Therefore, the estimation of the percentages of each of the different asexual and sexual stages (**Figure 4**) has to depend on a morphology evaluation of Giemsa-stained thin blood smear. Despite the apparent different morphology of mature male and female gametocytes (**Figure 4**), immature sexual stages are often indistinguishable from asexual stages.

One essential function of the male gametes upon emergence from male gametocyte in the mosquito midgut is the male gamete exflagellation, which is a very critical step in the transmission that must happen within a very short period of time. Variable methods used to evaluate this in many different systems have been described. Herein, we show a standardized method that can be repeated in any simple lab setting. We evaluated male gamete exflagellation with or without the injection of phenylhydrazine into recipient mice (**Figure 5**). We could show that the phenylhydrazine treatment significantly (four fold) increased the rate of male gamete exflagellation, which in turn will increase the fertilization rate and the number of all subsequent mosquito stages.

FIGURE LEGENDS:

Figure 1: The development of *P. yoelii p230p(-)* parasites constitutively expressing eGFP in blood and mosquito stages. (A) Image of mixed blood-stage parasites (1,000X magnification). **(B)** Image of ookinete (400X magnification). **(C)** Image of an *Anopheles stephensi* mosquito midgut infected with day 4 pmf early oocysts of live *p230p(-)* parasites expressing eGFP (100X magnification). **(D)** This panel shows a live image of a *P. yoelii p230p(-)* salivary gland sporozoite, dissected out at day 15 pmf, expressing eGFP (400X magnification).

Figure 2: Flow cytometry and microscopy evaluations of average blood-stage parasitemia of *P. yoelii* p230p(-) parasites are not significantly different. A group of four Swiss Webster mice was intravenously infected with 10,000 parasitized erythrocytes of *Pyp230p*(-) per mouse and the average blood-stage parasitemias% were recorded daily for 7 days by flow cytometry and by the microscopic evaluation of Giemsa-stained thin blood smears from a total of 20,000 and ~6,000 erythrocytes, respectively. The microscopic examination results shown are the average of two readings by two expert scientists per slide, and the time for evaluating the parasitemia of each slide was at least 10 minutes by each scientist. No significant differences could be detected on any of the days shown here. The mean values for all parasite strains were analyzed with the two-tailed *t*-test. The error bars represent the standard deviation.

Figure 3: An intravenous injection of *P. yoelii* p230p(-) parasites yields significantly different starting blood-stage parasitemia from an intraperitoneal injection. Two groups of five BALB/c mice were infected with 1,000 parasitized erythrocytes of *Pyp230p*(-) per mouse, either through the intravenous or intraperitoneal route, and the average blood-stage parasitemias% were recorded daily for 4 days by flow cytometry from a total of 20,000 erythrocytes. A statistically significant reduction (denoted by an asterisk) of blood-stage parasitemia could be detected for all days tested in the intraperitoneal route group compared to the intravenous route group. The mean values for all parasite strains were analyzed with the two-tailed *t*-test. The error bars represent the standard deviation.

Figure 4: Morphology of *P. yoelii* gametocytes in a Giemsa-stained thin blood smear. An image of a Giemsa-stained thin blood smear (1,000X magnification) of a Swiss Webster mouse infected with WT *P. yoelii* 17X-NL strain shows the typical blueish colored female gametocyte on the left side (denoted by an arrow) and the pinkish colored male (denoted by an asterisk) gametocyte on the right side of the image. The other stages shown are asexual blood stages.

Figure 5: The effect of phenylhydrazine on male gamete exflagellation. The effect of phenylhydrazine injected in recipient mice 5 days prior to the male gamete exflagellation rate estimation of *P. yoelii*. Phenylhydrazine significantly increases the rate of male gamete exflagellation, which leads to a higher mosquito stages infection post-mosquito-feeding. The mean values for all parasite strains were analyzed with the two-tailed *t*-test. The error bars represent the standard deviation.

DISCUSSION:

In spite of the similarity in the general biology of their life cycle to that of human malaria parasites, mouse malaria models also have many dissimilarities to human *Plasmodium* species that would limit their use as reliable *in vivo* models. For instance, with the exception of live-attenuated parasites as vaccines, all vaccine studies with subunit and DNA and other vaccines gave excellent results in the mouse model, but in humans living in endemic areas, the results were far from satisfactory.

Another problem is the difference of life cycle stage infectivity from one mouse strain to another, and sometimes from one animal vendor to another for the same mouse strain. Moreover, the

main two rodent malaria species that are widely used as preferred *in vivo* malaria models, *P. berghei* and *P. yoelii*, do not exhibit a synchronous blood-stage cycle, which is completely different from any human malaria parasite. However, the benefits of using mouse malaria parasites as *in vivo* models by far outweigh these dissimilarities, which can be overcome by more in-depth analyses of the molecular drive of these limitations. In general, these limitations are mostly displayed by the rodent malaria blood-stage parasites, but not as much for the other life cycle stages of the malaria parasite.

Although blood stages are important for various vaccine, drug targeting, immunology, and functional genomic studies, there is a scarcity of standardized methods and protocols that concentrate on the phenotypical analysis and functional assays that involve rodent malaria parasite blood-stage parasites, with more focus on mosquito transmission and transfection protocols. Therefore, the methods in this article will help to provide standardized and simplified protocols for studying the pathogenic stages of the rodent malaria parasites.

ACKNOWLEDGMENTS:

Ahmed Aly is supported by funding to Bezmialem Vakif University from the Turkish Ministry of Development grant 2015BSV036, by funding provided by the Tulane University School of Public Health and Tropical Medicine, and by funding from NIH-NIAID for R21Grant 1R21AI111058-01A1.

DISCLOSURES:

The authors have nothing to disclose.

REFERENCES:

1. Who/Unicef Report: Malaria Mdg Target Achieved Amid Sharp Drop in Cases and Mortality, but 3 Billion People Remain at Risk. *Neurosciences* (Riyadh). **21**, 87-88 (2016).
2. Naing, C., Whittaker, M. A., Nyunt Wai, V., Mak, J. W. Is *Plasmodium vivax* malaria a severe malaria?: a systematic review and meta-analysis. *PLoS Neglected Tropical Diseases*. **8**, e3071 (2014).
3. Millar, S. B., Cox-Singh, J. Human infections with *Plasmodium knowlesi*--zoonotic malaria. *Clinical Microbiology and Infection: The Official Publication of the European Society of Clinical Microbiology and Infectious Diseases*. **21**, 640-648 (2015).
4. Spry, C., Kirk, K., Saliba, K. J. Coenzyme A biosynthesis: an antimicrobial drug target. *FEMS Microbiology Reviews*. **32**, 56-106 (2008).
5. Aly, A. S., Vaughan, A. M., Kappe, S. H. Malaria parasite development in the mosquito and infection of the mammalian host. *Annual Review of Microbiology*. **63**, 195-221 (2009).
6. Stephens, R., Culleton, R. L., Lamb, T. J. The contribution of *Plasmodium chabaudi* to our understanding of malaria. *Trends in Parasitology*. **28**, 73-82 (2012).

7. Bagnaresi, P. *et al.* Unlike the synchronous *Plasmodium falciparum* and *P. chabaudi* infection, the *P. berghei* and *P. yoelii* asynchronous infections are not affected by melatonin. *International Journal of General Medicine*. **2**, 47-55 (2009).
8. Cromer, D., Evans, K. J., Schofield, L., Davenport, M. P. Preferential invasion of reticulocytes during late-stage *Plasmodium berghei* infection accounts for reduced circulating reticulocyte levels. *International Journal for Parasitology*. **36**, 1389-1397 (2006).
9. Jayawardena, A. N., Mogil, R., Murphy, D. B., Burger, D., Gershon, R. K. Enhanced expression of H-2K and H-2D antigens on reticulocytes infected with *Plasmodium yoelii*. *Nature*. **302**, 623-626 (1983).
10. Okada, H. *et al.* A transient resistance to blood-stage malaria in interferon-gamma-deficient mice through impaired production of the host cells preferred by malaria parasites. *Frontiers in Microbiology*. **6**, 600 (2015).
11. Walliker, D., Sanderson, A., Yoeli, M., Hargreaves, B. J. A genetic investigation of virulence in a rodent malaria parasite. *Parasitology*. **72**, 183-194 (1976).
12. Deharo, E., Coquelin, F., Chabaud, A. G., Landau, I. The erythrocytic schizogony of two synchronized strains of *plasmodium berghei*, NK65 and ANKA, in normocytes and reticulocytes. *Parasitology Research*. **82**, 178-182 (1996).
13. Fahey, J. R., Spitalny, G. L. Virulent and nonvirulent forms of *Plasmodium yoelii* are not restricted to growth within a single erythrocyte type. *Infection and Immunity*. **44**, 151-156 (1984).
14. Srivastava, A. *et al.* Host reticulocytes provide metabolic reservoirs that can be exploited by malaria parasites. *PLoS Pathogens*. **11**, e1004882 (2015).
15. Hart, R. J. *et al.* Genetic Characterization of *Plasmodium* Putative Pantothenate Kinase Genes Reveals Their Essential Role in Malaria Parasite Transmission to the Mosquito. *Scientific Reports*. **6**, 33518 (2016).
16. Hart, R. J., Ghaffar, A., Abdalal, S., Perrin, B., Aly, A. S. *Plasmodium* AdoMetDC/ODC bifunctional enzyme is essential for male sexual stage development and mosquito transmission. *Biology Open*. **5**, 1022-1029 (2016).
17. Hart, R. J., Lawres, L., Fritzen, E., Ben Mamoun, C., Aly, A. S. *Plasmodium yoelii* vitamin B5 pantothenate transporter candidate is essential for parasite transmission to the mosquito. *Scientific Reports*. **4**, 5665 (2014).
18. Ramakrishnan, C. *et al.* Laboratory maintenance of rodent malaria parasites. *Methods in Molecular Biology*. **923**, 51-72 (2013).

19. Hart, R. J., Abraham, A., Aly, A. S. I. Genetic Characterization of Coenzyme A Biosynthesis Reveals Essential Distinctive Functions during Malaria Parasite Development in Blood and Mosquito. *Frontiers in Cellular and Infection Microbiology*. **7**, 260 (2017).
20. Vanderberg, J. P., Yoeli, M. Effects of temperature on sporogonic development of *Plasmodium berghei*. *The Journal of Parasitology*. **52**, 559-564 (1966).
21. Vaughan, A. M., Aly, A. S., Kappe, S. H. Malaria parasite pre-erythrocytic stage infection: gliding and hiding. *Cell Host & Microbe*. **4**, 209-218 (2008).
22. Briones, M. R., Tsuji, M., Nussenzweig, V. The large difference in infectivity for mice of *Plasmodium berghei* and *Plasmodium yoelii* sporozoites cannot be correlated with their ability to enter into hepatocytes. *Molecular and Biochemical Parasitology*. **77**, 7-17 (1996).
23. Hollingdale, M. R., Leland, P., Leef, J. L., Beaudoin, R. L. The influence of cell type and culture medium on the *in vitro* cultivation of exoerythrocytic stages of *Plasmodium berghei*. *The Journal of Parasitology*. **69**, 346-352 (1983).
24. House, B. L., Hollingdale, M. R., Sacchi Jr., J. B., Richie, T. L. Functional immunoassays using an *in vitro* malaria liver-stage infection model: where do we go from here? *Trends in Parasitology*. **25**, 525-533 (2009).
25. Khan, Z. M., Vanderberg, J. P. Role of host cellular response in differential susceptibility of nonimmunized BALB/c mice to *Plasmodium berghei* and *Plasmodium yoelii* sporozoites. *Infection and Immunity*. **59**, 2529-2534 (1991).
26. Most, H., Nussenzweig, R. S., Vanderberg, J., Herman, R., Yoeli, M. Susceptibility of genetically standardized (JAX) mouse strains to sporozoite- and blood-induced *Plasmodium berghei* infections. *Military Medicine*. **131**, Suppl: 915-918 (1966).
27. Nussenzweig, R., Herman, R., Vanderberg, J., Yoeli, M., Most, H. Studies on sporozoite-induced infections of rodent malaria. 3. The course of sporozoite-induced *Plasmodium berghei* in different hosts. *The American Journal of Tropical Medicine and Hygiene*. **15**, 684-689 (1966).
28. Silvie, O., Franetich, J. F., Boucheix, C., Rubinstein, E., Mazier, D. Alternative invasion pathways for *Plasmodium berghei* sporozoites. *International Journal for Parasitology*. **37**, 173-182 (2007).
29. Tarun, A. S. *et al.* Protracted sterile protection with *Plasmodium yoelii* pre-erythrocytic genetically attenuated parasite malaria vaccines is independent of significant liver-stage persistence and is mediated by CD8⁺ T cells. *The Journal of Infectious Diseases*. **196**, 608-616 (2007).

30. Weiss, W. R., Good, M. F., Hollingdale, M. R., Miller, L. H., Berzofsky, J. A. Genetic control of immunity to *Plasmodium yoelii* sporozoites. *The Journal of Immunology*. **143**, 4263-4266 (1989).
31. Philip, N., Orr, R., Waters, A. P. Transfection of rodent malaria parasites. *Methods in Molecular Biology*. **923**, 99-125 (2013).
32. Janse, C. J., Ponzi, M., Sinden, R. E., Waters, A. P. Chromosomes and sexual development of rodent malaria parasites. *Memorias do Instituto Oswaldo Cruz*. **89** Suppl 2, 43-46 (1994).
33. Sinha, A. *et al.* A cascade of DNA-binding proteins for sexual commitment and development in *Plasmodium*. *Nature*. **507**, 253-257 (2014).
34. Malleret, B. *et al.* A rapid and robust tri-color flow cytometry assay for monitoring malaria parasite development. *Scientific Reports*. **1**, 118 (2011).
35. Aly, A. S., Matuschewski, K. A malarial cysteine protease is necessary for *Plasmodium* sporozoite egress from oocysts. *The Journal of Experimental Medicine*. **202**, 225-230 (2005).
36. Aly, A. S., Lindner, S. E., MacKellar, D. C., Peng, X., Kappe, S. H. SAP1 is a critical post-transcriptional regulator of infectivity in malaria parasite sporozoite stages. *Molecular Microbiology*. **79**, 929-939 (2011).
37. Aly, A. S. *et al.* Targeted deletion of SAP1 abolishes the expression of infectivity factors necessary for successful malaria parasite liver infection. *Molecular Microbiology*. **69**, 152-163 (2008).
38. Ozaki, L. S., Gwadz, R. W., Godson, G. N. Simple centrifugation method for rapid separation of sporozoites from mosquitoes. *The Journal of Parasitology*. **70**, 831-833 (1984).
39. de Koning-Ward, T. F., Gilson, P. R., Crabb, B. S. Advances in molecular genetic systems in malaria. *Nature Reviews. Microbiology*. **13**, 373-387 (2015).
40. Janse, C. J., Ramesar, J., Waters, A. P. High-efficiency transfection and drug selection of genetically transformed blood stages of the rodent malaria parasite *Plasmodium berghei*. *Nature Protocols*. **1**, 346-356 (2006).
41. Lin, J. W. *et al.* A novel 'gene insertion/marker out' (GIMO) method for transgene expression and gene complementation in rodent malaria parasites. *PLoS One*. **6**, e29289 (2011).
42. Manzoni, G. *et al.* A rapid and robust selection procedure for generating drug-selectable marker-free recombinant malaria parasites. *Scientific Reports*. **4**, 4760 (2014).

Figure 1

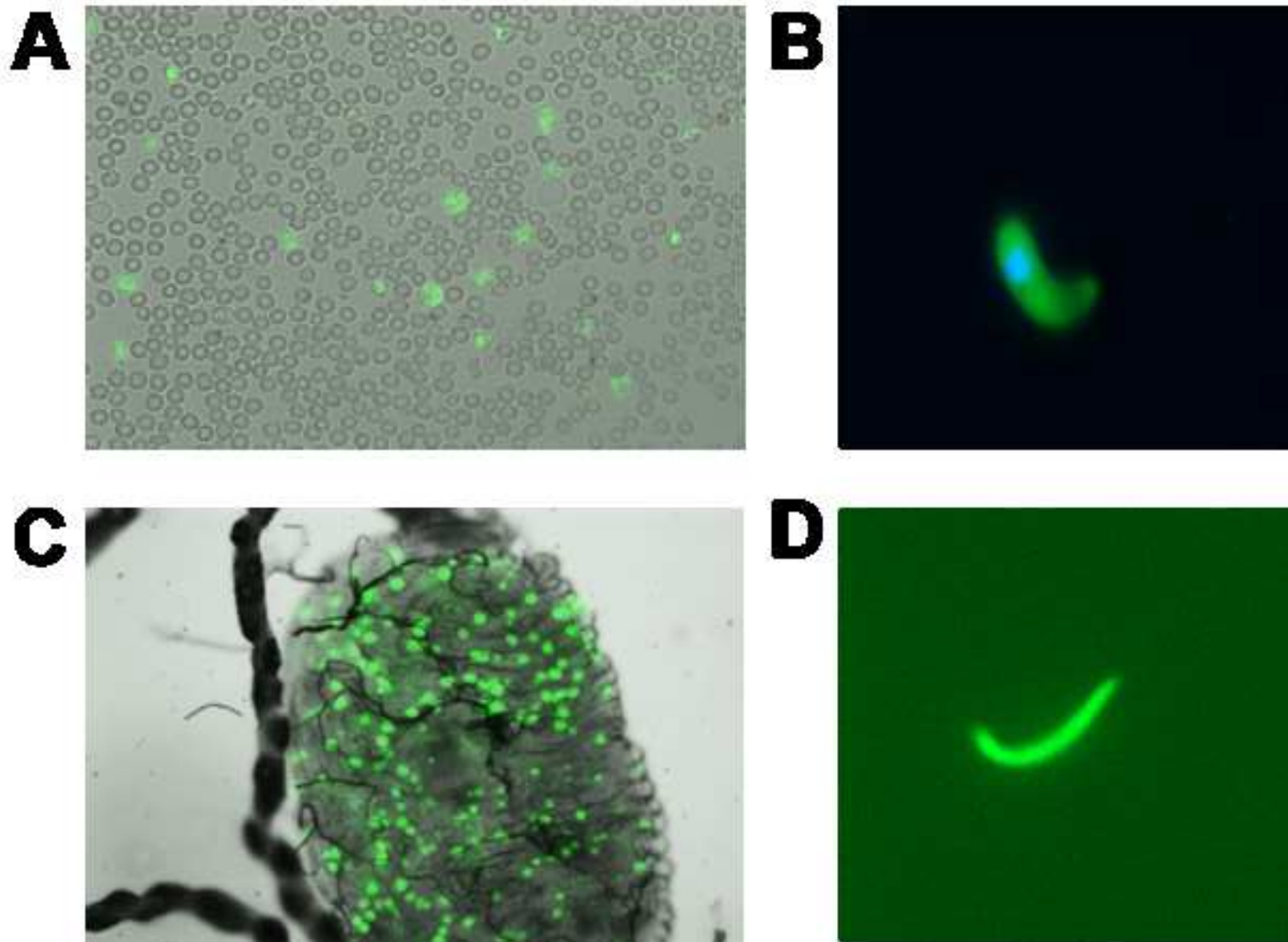


Figure 2

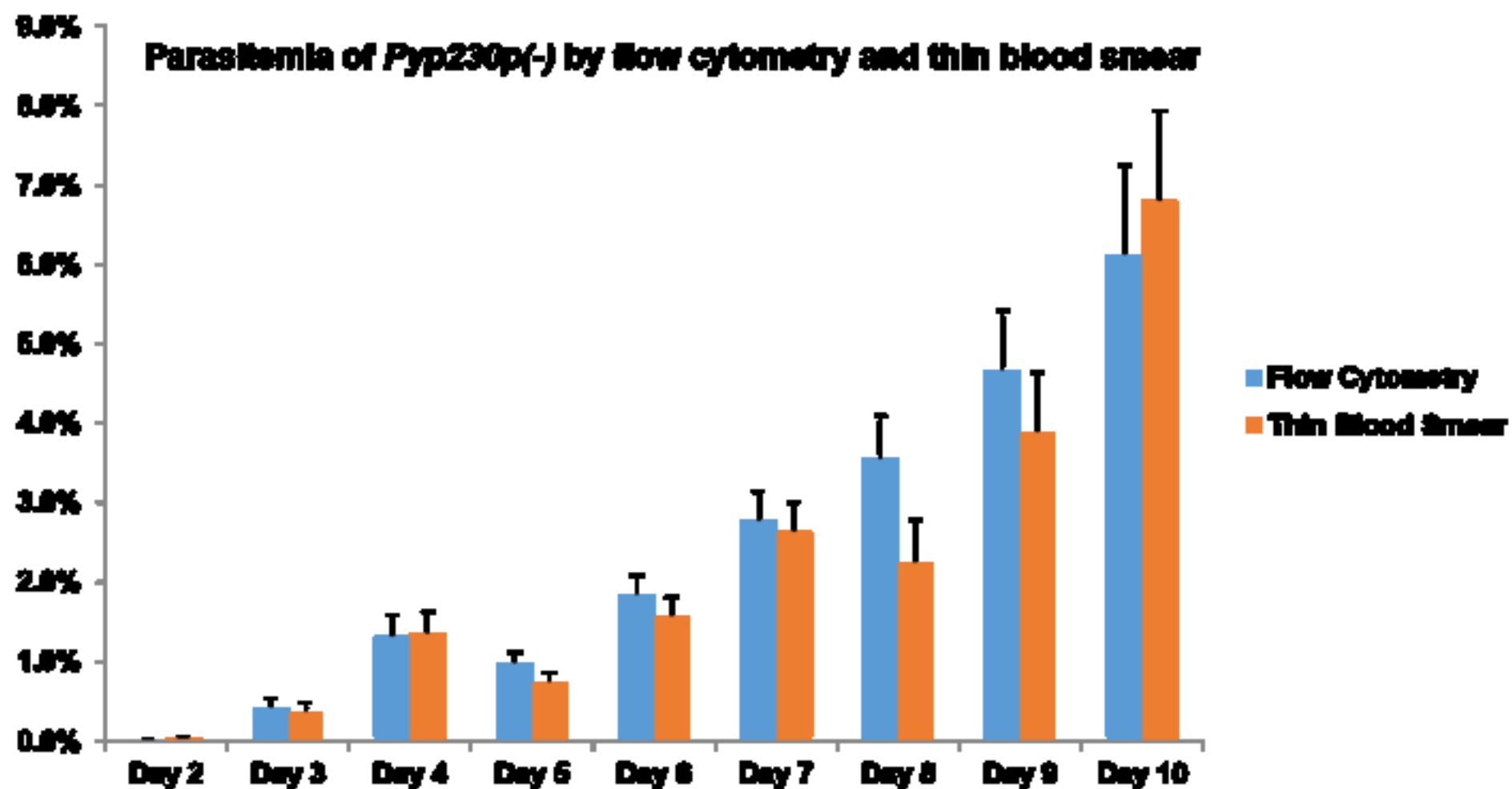


Figure 3

Parasitemia of Intravenous vs. Intraperitoneal infection with *Pyp230p(-)*

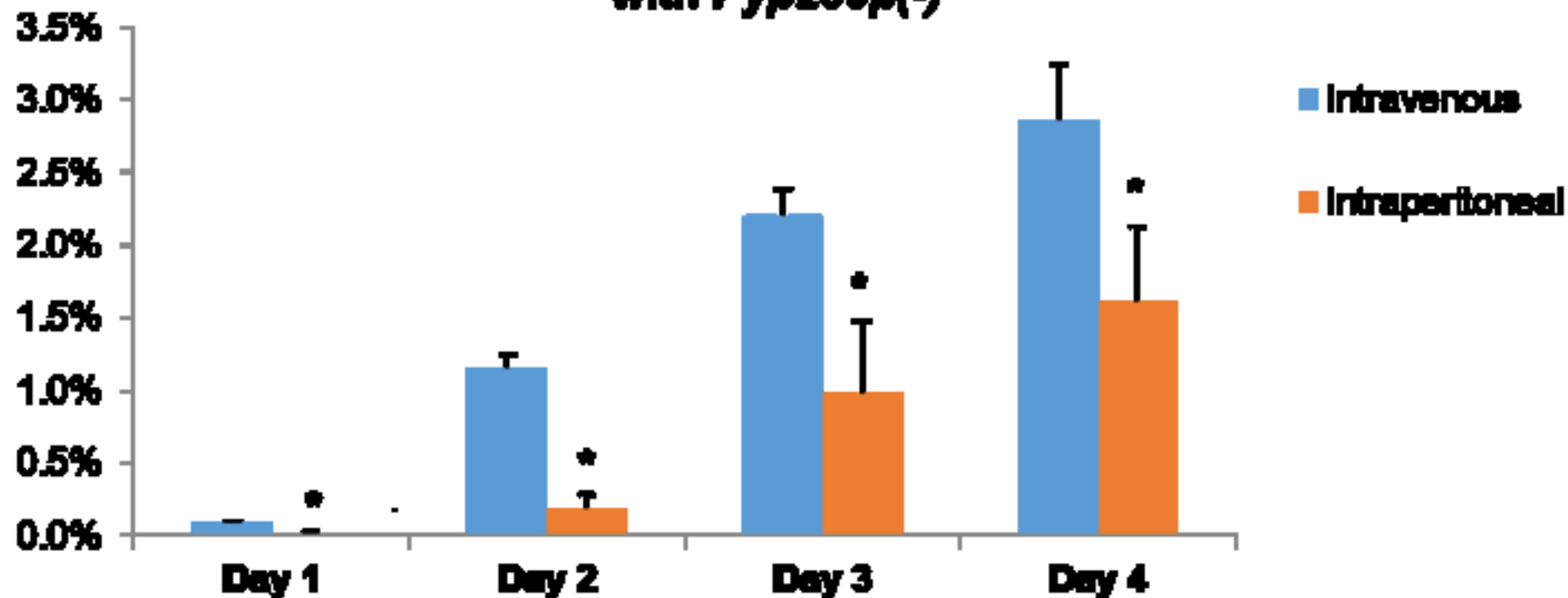


Figure 4

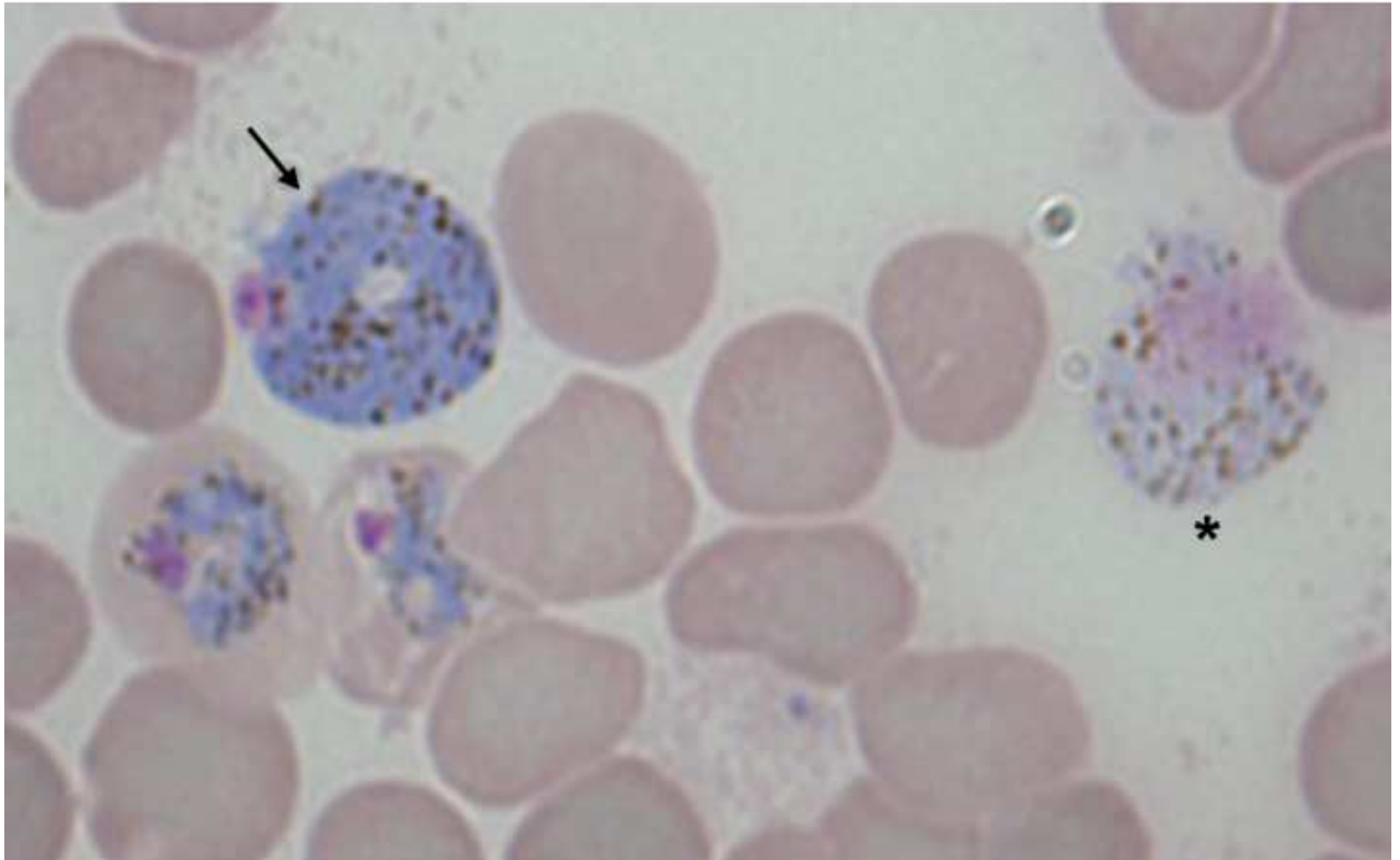
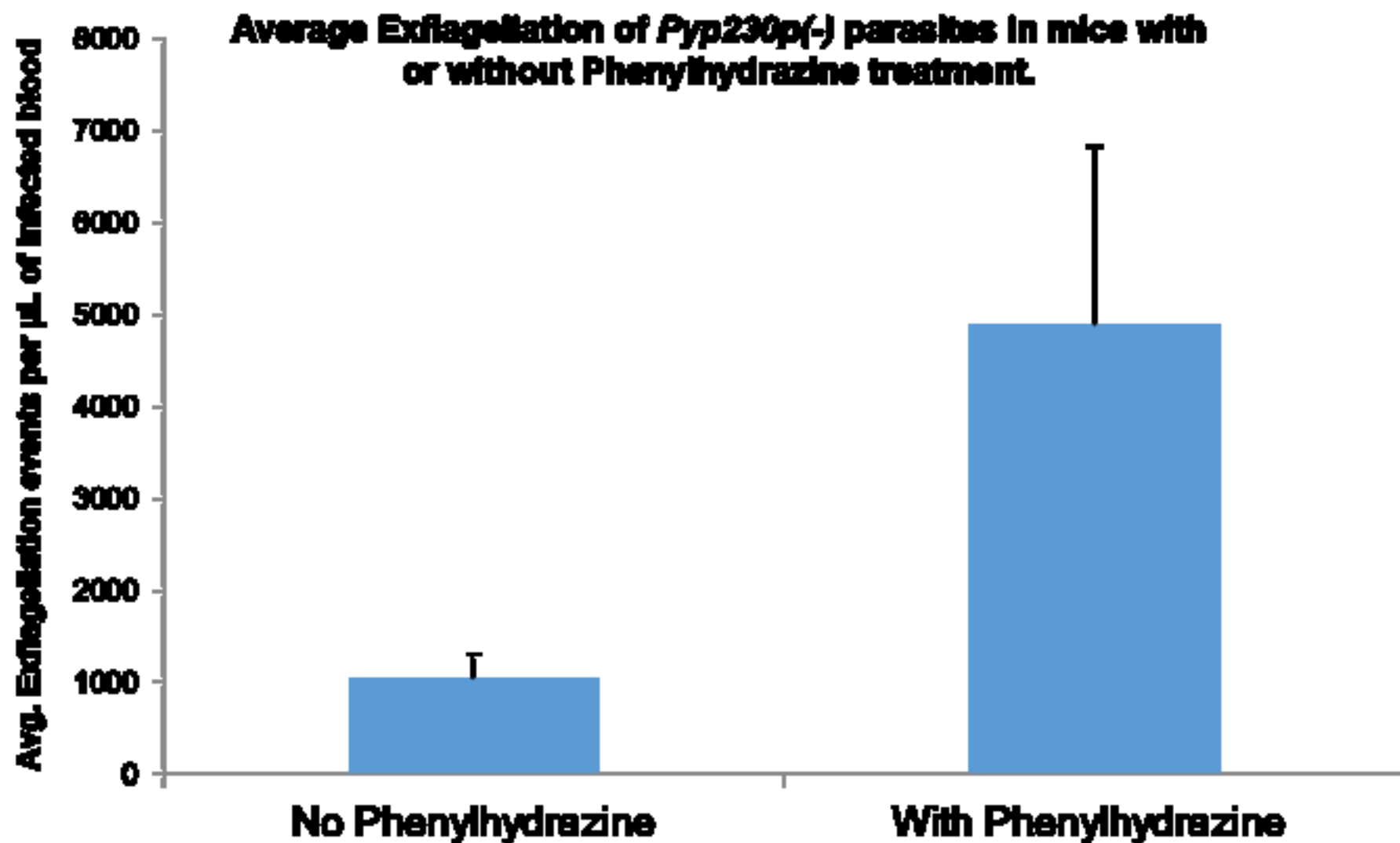


Figure 5



Name of Reagent/ Equipment	Company	Catalog Number	Comments/Description
Heparin	Sigma	375095-100KU	
Xanthurenic acid	Sigma	D120804-5G	
Hypoxanthine	Sigma	H9377-25G	
Alsever's solution	Sigma	A3551-500ML	
Sodium Bicarbonate	Sigma	S5761-500G	
Phenylhydrazine	Sigma	P26252-5G	
Glycerol	Sigma	G5516-500ML	
Giemsa	Sigma	GS1L-1L	
26G x 3/8 Precision Glide Needle,	Becton Dickinson	305110	
1 ml TB Syringe, 26G x 3/8	Becton Dickinson	309625	
1 cc Insulin Syringe, U-100 27G	Becton Dickinson	329412	
Isoflurane, USB	Piramal	2667- 46- 7	
PBS, pH 7.4	Gibco	10010049	
RPMI	Gibco	22400105	
DMEM	Gibco	11995065	
Pencillin/ Streptomycin	Gibco	10378016	
Fetal Bovine Serum	Gibco	10082147	
Fiber Glass Wool	Corning	3950	



1 Alewife Center #200
Cambridge, MA 02140
tel. 617.945.9051
www.jove.com

ARTICLE AND VIDEO LICENSE AGREEMENT

Title of Article:

Phenotypic Analysis of Rodent Malaria Parasite Asexual and Sexual Blood Stages and Infection of the Mosquito Vector.

Author(s):

Ahmed S. I. Aly*, Aneesa Golshan, Amanah Abraham and Robert J. Hart.

Item 1 (check one box): The Author elects to have the Materials be made available (as described at

<http://www.jove.com/author>) via: ☒ Standard Access ☐ Open Access

Item 2 (check one box):

- ☒ The Author is NOT a United States government employee.
- ☐ The Author is a United States government employee and the Materials were prepared in the course of his or her duties as a United States government employee.
- ☐ The Author is a United States government employee but the Materials were NOT prepared in the course of his or her duties as a United States government employee.

ARTICLE AND VIDEO LICENSE AGREEMENT

1. **Defined Terms.** As used in this Article and Video License Agreement, the following terms shall have the following meanings: “**Agreement**” means this Article and Video License Agreement; “**Article**” means the article specified on the last page of this Agreement, including any associated materials such as texts, figures, tables, artwork, abstracts, or summaries contained therein; “**Author**” means the author who is a signatory to this Agreement; “**Collective Work**” means a work, such as a periodical issue, anthology or encyclopedia, in which the Materials in their entirety in unmodified form, along with a number of other contributions, constituting separate and independent works in themselves, are assembled into a collective whole; “**CRC License**” means the Creative Commons Attribution-Non Commercial-No Derivs 3.0 Unported Agreement, the terms and conditions of which can be found at: <http://creativecommons.org/licenses/by-nc-nd/3.0/legalcode>; “**Derivative Work**” means a work based upon the Materials or upon the Materials and other pre-existing works, such as a translation, musical arrangement, dramatization, fictionalization, motion picture version, sound recording, art reproduction, abridgment, condensation, or any other form in which the Materials may be recast, transformed, or adapted; “**Institution**” means the institution, listed on the last page of this Agreement, by which the Author was employed at the time of the creation of the Materials; “**JoVE**” means MyJoVE Corporation, a Massachusetts corporation and the publisher of *The Journal of Visualized Experiments*; “**Materials**” means the Article and / or the Video; “**Parties**” means the Author and JoVE; “**Video**” means any video(s) made by the Author, alone or in conjunction with any other parties, or by JoVE or its affiliates or agents, individually or in collaboration with the Author or any other parties, incorporating all or any portion of the Article, and in which the Author may or may not appear.

2. **Background.** The Author, who is the author of the Article, in order to ensure the dissemination and protection of the Article, desires to have the JoVE publish the Article and create and transmit videos based on the Article. In furtherance of such goals, the Parties desire to memorialize in this Agreement the respective rights of each Party in and to the Article and the Video.

3. **Grant of Rights in Article.** In consideration of JoVE agreeing to publish the Article, the Author hereby grants to JoVE, subject to **Sections 4** and **7** below, the exclusive, royalty-free, perpetual (for the full term of copyright in the Article, including any extensions thereto) license (a) to publish, reproduce, distribute, display and store the Article in all forms, formats and media whether now known or hereafter developed (including without limitation in print, digital and electronic form) throughout the world, (b) to translate the Article into other languages, create adaptations, summaries or extracts of the Article or other Derivative Works (including, without limitation, the Video) or Collective Works based on all or any portion of the Article and exercise all of the rights set forth in (a) above in such translations, adaptations, summaries, extracts, Derivative Works or Collective Works and (c) to license others to do any or all of the above. The foregoing rights may be exercised in all media and formats, whether now known or hereafter devised, and include the right to make such modifications as are technically necessary to exercise the rights in other media and formats. If the “Open Access” box has been checked in **Item 1** above, JoVE and the Author hereby grant to the public all such rights in the Article as provided in, but subject to all limitations and requirements set forth in, the CRC License.

ARTICLE AND VIDEO LICENSE AGREEMENT

4. Retention of Rights in Article. Notwithstanding the exclusive license granted to JoVE in **Section 3** above, the Author shall, with respect to the Article, retain the non-exclusive right to use all or part of the Article for the non-commercial purpose of giving lectures, presentations or teaching classes, and to post a copy of the Article on the Institution's website or the Author's personal website, in each case provided that a link to the Article on the JoVE website is provided and notice of JoVE's copyright in the Article is included. All non-copyright intellectual property rights in and to the Article, such as patent rights, shall remain with the Author.

5. Grant of Rights in Video – Standard Access. This **Section 5** applies if the "Standard Access" box has been checked in **Item 1** above or if no box has been checked in **Item 1** above. In consideration of JoVE agreeing to produce, display or otherwise assist with the Video, the Author hereby acknowledges and agrees that, Subject to **Section 7** below, JoVE is and shall be the sole and exclusive owner of all rights of any nature, including, without limitation, all copyrights, in and to the Video. To the extent that, by law, the Author is deemed, now or at any time in the future, to have any rights of any nature in or to the Video, the Author hereby disclaims all such rights and transfers all such rights to JoVE.

6. Grant of Rights in Video – Open Access. This **Section 6** applies only if the "Open Access" box has been checked in **Item 1** above. In consideration of JoVE agreeing to produce, display or otherwise assist with the Video, the Author hereby grants to JoVE, subject to **Section 7** below, the exclusive, royalty-free, perpetual (for the full term of copyright in the Article, including any extensions thereto) license (a) to publish, reproduce, distribute, display and store the Video in all forms, formats and media whether now known or hereafter developed (including without limitation in print, digital and electronic form) throughout the world, (b) to translate the Video into other languages, create adaptations, summaries or extracts of the Video or other Derivative Works or Collective Works based on all or any portion of the Video and exercise all of the rights set forth in (a) above in such translations, adaptations, summaries, extracts, Derivative Works or Collective Works and (c) to license others to do any or all of the above. The foregoing rights may be exercised in all media and formats, whether now known or hereafter devised, and include the right to make such modifications as are technically necessary to exercise the rights in other media and formats. For any Video to which this Section 6 is applicable, JoVE and the Author hereby grant to the public all such rights in the Video as provided in, but subject to all limitations and requirements set forth in, the CRC License.

7. Government Employees. If the Author is a United States government employee and the Article was prepared in the course of his or her duties as a United States government employee, as indicated in **Item 2** above, and any of the licenses or grants granted by the Author hereunder exceed the scope of the 17 U.S.C. 403, then the rights granted hereunder shall be limited to the maximum rights permitted under such

statute. In such case, all provisions contained herein that are not in conflict with such statute shall remain in full force and effect, and all provisions contained herein that do so conflict shall be deemed to be amended so as to provide to JoVE the maximum rights permissible within such statute.

8. Likeness, Privacy, Personality. The Author hereby grants JoVE the right to use the Author's name, voice, likeness, picture, photograph, image, biography and performance in any way, commercial or otherwise, in connection with the Materials and the sale, promotion and distribution thereof. The Author hereby waives any and all rights he or she may have, relating to his or her appearance in the Video or otherwise relating to the Materials, under all applicable privacy, likeness, personality or similar laws.

9. Author Warranties. The Author represents and warrants that the Article is original, that it has not been published, that the copyright interest is owned by the Author (or, if more than one author is listed at the beginning of this Agreement, by such authors collectively) and has not been assigned, licensed, or otherwise transferred to any other party. The Author represents and warrants that the author(s) listed at the top of this Agreement are the only authors of the Materials. If more than one author is listed at the top of this Agreement and if any such author has not entered into a separate Article and Video License Agreement with JoVE relating to the Materials, the Author represents and warrants that the Author has been authorized by each of the other such authors to execute this Agreement on his or her behalf and to bind him or her with respect to the terms of this Agreement as if each of them had been a party hereto as an Author. The Author warrants that the use, reproduction, distribution, public or private performance or display, and/or modification of all or any portion of the Materials does not and will not violate, infringe and/or misappropriate the patent, trademark, intellectual property or other rights of any third party. The Author represents and warrants that it has and will continue to comply with all government, institutional and other regulations, including, without limitation all institutional, laboratory, hospital, ethical, human and animal treatment, privacy, and all other rules, regulations, laws, procedures or guidelines, applicable to the Materials, and that all research involving human and animal subjects has been approved by the Author's relevant institutional review board.

10. JoVE Discretion. If the Author requests the assistance of JoVE in producing the Video in the Author's facility, the Author shall ensure that the presence of JoVE employees, agents or independent contractors is in accordance with the relevant regulations of the Author's institution. If more than one author is listed at the beginning of this Agreement, JoVE may, in its sole discretion, elect not take any action with respect to the Article until such time as it has received complete, executed Article and Video License Agreements from each such author. JoVE reserves the right, in its absolute and sole discretion and without giving any reason therefore, to accept or decline any work submitted to JoVE. JoVE and its employees, agents and independent contractors shall have

ARTICLE AND VIDEO LICENSE AGREEMENT

full, unfettered access to the facilities of the Author or of the Author's institution as necessary to make the Video, whether actually published or not. JoVE has sole discretion as to the method of making and publishing the Materials, including, without limitation, to all decisions regarding editing, lighting, filming, timing of publication, if any, length, quality, content and the like.

11. **Indemnification.** The Author agrees to indemnify JoVE and/or its successors and assigns from and against any and all claims, costs, and expenses, including attorney's fees, arising out of any breach of any warranty or other representations contained herein. The Author further agrees to indemnify and hold harmless JoVE from and against any and all claims, costs, and expenses, including attorney's fees, resulting from the breach by the Author of any representation or warranty contained herein or from allegations or instances of violation of intellectual property rights, damage to the Author's or the Author's institution's facilities, fraud, libel, defamation, research, equipment, experiments, property damage, personal injury, violations of institutional, laboratory, hospital, ethical, human and animal treatment, privacy or other rules, regulations, laws, procedures or guidelines, liabilities and other losses or damages related in any way to the submission of work to JoVE, making of videos by JoVE, or publication in JoVE or elsewhere by JoVE. The Author shall be responsible for, and shall hold JoVE harmless from, damages caused by lack of sterilization, lack of cleanliness or by contamination due to the making of a video by JoVE its employees, agents or independent contractors. All sterilization, cleanliness or decontamination procedures shall be solely the responsibility of the Author and shall be undertaken at the Author's


expense. All indemnifications provided herein shall include JoVE's attorney's fees and costs related to said losses or damages. Such indemnification and holding harmless shall include such losses or damages incurred by, or in connection with, acts or omissions of JoVE, its employees, agents or independent contractors.

12. **Fees.** To cover the cost incurred for publication, JoVE must receive payment before production and publication the Materials. Payment is due in 21 days of invoice. Should the Materials not be published due to an editorial or production decision, these funds will be returned to the Author. Withdrawal by the Author of any submitted Materials after final peer review approval will result in a US\$1,200 fee to cover pre-production expenses incurred by JoVE. If payment is not received by the completion of filming, production and publication of the Materials will be suspended until payment is received.

13. **Transfer, Governing Law.** This Agreement may be assigned by JoVE and shall inure to the benefits of any of JoVE's successors and assignees. This Agreement shall be governed and construed by the internal laws of the Commonwealth of Massachusetts without giving effect to any conflict of law provision thereunder. This Agreement may be executed in counterparts, each of which shall be deemed an original, but all of which together shall be deemed to be one and the same agreement. A signed copy of this Agreement delivered by facsimile, e-mail or other means of electronic transmission shall be deemed to have the same legal effect as delivery of an original signed copy of this Agreement.

A signed copy of this document must be sent with all new submissions. Only one Agreement required per submission.

CORRESPONDING AUTHOR:

Name:	Ahmed S. I. ALY		
Department:	Department of Tropical Medicine		
Institution:	Tulane University		
Article Title:	Phenotypic Analysis of Rodent Malaria Parasite Asexual and Sexual Blood Stages and Infection of the Mosquito Vector.		
Signature:		Digitally signed by Ahmed S. I. Aly DN: cn=Ahmed S. I. Aly, o=Tulane University, ou=Department of Tropical Medicine, email=aaly@tulane.edu, c=US Date: 2016.11.08 10:11:57 -06'00'	Date: 11/08/2016

Please submit a signed and dated copy of this license by one of the following three methods:

- 1) Upload a scanned copy of the document as a pdf on the JoVE submission site;
- 2) Fax the document to +1.866.381.2236;
- 3) Mail the document to JoVE / Attn: JoVE Editorial / 1 Alewife Center #200 / Cambridge, MA 02139

For questions, please email submissions@jove.com or call +1.617.945.9051

August 15th, 2018

Dear JOVE Editor,

Please, find enclosed our revised manuscript entitled “**Phenotypic Analysis of Rodent Malaria Parasite Asexual and Sexual Blood Stages and Mosquito Stages.**” for publication consideration in JOVE. In the revised manuscript, we fully addressed all concerns of the scientific review editor, which were provided to us as comments in the manuscript file, as replies to the same comments in the same manuscript file. We tracked all changes in the manuscript and we highlighted the sections that we wish to be filmed.

We hope to hear a positive response from you soon.

Sincerely,
Ahmed Aly (on behalf of all the authors)

Ahmed S I Aly, PhD
Assistant Professor
Bezmialem Vakif University
Beykoz Institute of Life Sciences and Biotechnology
Istanbul - Beykoz 34820, Turkey.
ahmed.aly@bezmialem.edu.tr

Tulane University School of Public Health and Tropical Medicine
Department of Tropical Medicine
New Orleans, LA 70112, USA.
aaly@tulane.edu