

Journal of Visualized Experiments

Sub-Surface Laser Engraving (SSLE) of Glass Crystals as a Medium for the Display of Biomedical Tomographic Imaging Data and Associated Labels --Manuscript Draft--

Manuscript Number:	JoVE55340R2
Full Title:	Sub-Surface Laser Engraving (SSLE) of Glass Crystals as a Medium for the Display of Biomedical Tomographic Imaging Data and Associated Labels
Article Type:	Methods Article - JoVE Produced Video
Keywords:	Biomedical Imaging; Tomographic Imaging; Computed Tomography; CT; sub-surface laser engraving; SSLE; crystal engraving; anatomical model; education
Manuscript Classifications:	1.2: Musculoskeletal System; 10.1.576: Industry; 10.1.637: Manufactured Materials; 10.1.897: Technology; 12.1.143: Communication; 12.1.296: Data Display
Corresponding Author:	W. Matthew Leevy, Ph.D. University of Notre Dame Notre Dame, IN UNITED STATES
Corresponding Author Secondary Information:	
Corresponding Author E-Mail:	wleevy@nd.edu
Corresponding Author's Institution:	University of Notre Dame
Corresponding Author's Secondary Institution:	
First Author:	Aislinn M Betts
First Author Secondary Information:	
Other Authors:	Aislinn M Betts
	Matthew T McGoldrick
	Christopher R Dethlefs
	Justin Piotrowicz
	Tony Van Avermaete
	Jeff Maki
	Steven Gerstler, M.D.
Order of Authors Secondary Information:	
Abstract:	Biomedical imaging modalities like Computed Tomography (CT) and Magnetic Resonance (MR) provide excellent platforms for collecting three dimensional data sets of patient or specimen anatomy in clinical or preclinical settings. However, the use of virtual, on-screen display limits the ability of these tomographic images to fully convey the anatomical information embedded within. One solution is to interface a biomedical imaging data set with 3D printing technology to generate a physical replica. Here we detail a complementary method to visualize tomographic imaging data with a hand-held model: Sub Surface Laser Engraving (SSLE) of crystal glass. SSLE offers several unique benefits including: 1) The facile ability to include anatomical labels, as well as a scale bar, 2) Streamlined multipart assembly of complex structures in one medium, 3) High resolution in the X, Y, and Z planes, and 4) Semi-transparent shells for facile visualization of internal anatomical substructures. Here we demonstrate the process of SSLE with CT data sets derived from pre-clinical and clinical sources. This protocol will serve as a powerful and inexpensive new tool with which to visualize complex anatomical structures for scientists and students in a number of educational

	and research settings.
Author Comments:	<p>To the Editorial Board,</p> <p>Please find the included manuscript "Sub-Surface Laser Engraving (SSLE) of Glass Crystals as a Medium for the Display of Biomedical Tomographic Imaging Data and Associated Labels" for consideration for publication. We believe this manuscript is a solid fit for JoVE as it details the creation of new, hand-held models for visualization of complex Computed Tomography (CT) data sets. In this case, we use glass crystals as a compelling medium for data display, while demonstrating a number of advantages including suspended anatomical labels, the inclusion of scale bars, and the visualization of internal sub-structures through semi-opaque layers. We believe this original work will serve to assist researchers and clinicians using CT to create advanced anatomical models for educational applications spanning both student and patient populations.</p> <p>Best regards,</p> <p>W. Matthew Leevy, Ph.D.</p>
Additional Information:	
Question	Response
If this article needs to be "in-press" by a certain date, please indicate the date below and explain in your cover letter.	

Title:

Scaled Anatomical Model Creation of Biomedical Tomographic Imaging Data and Associated Labels for subsequent Sub-Surface Laser Engraving (SSLE) of Glass Crystals

Authors

Betts, Aislinn M.*

Department of Biological Sciences

University of Notre Dame

Notre Dame, Indiana, United States of America

abetts2@nd.edu

McGoldrick, Matthew T.*

Department of Biological Sciences

University of Notre Dame

Notre Dame, Indiana, United States of America

mmcgoldr@nd.edu

Dethlefs, Chris R.

Department of Biological Sciences

University of Notre Dame

Notre Dame, Indiana, United States of America

Christopher.R.Dethlefs.1@nd.edu

Piotrowicz, Justin

Models Plus Incorporated

Kingsford Heights, Indiana, United States of America

jpiotrowicz@mydentalmodels.com

Van Avermaete, Tony

Department of Biological Sciences

University of Notre Dame

Notre Dame, Indiana, United States of America

tonyvan22@gmail.com

Maki, Jeff

Models Plus Incorporated

Kingsford Heights, Indiana, United States of America

jmaki@bonemodels.com

Gerstler, Steve

Saint Joseph Regional Medical Center

Mishawaka, Indiana, United States of America

sgerstler@yahoo.com

Leevy, W. M.

¹Department of Biological Sciences, University of Notre Dame, Indiana, United States of America

²Harper Cancer Research Institute, University of Notre Dame, Indiana, United States of America

³Notre Dame Integrated Imaging Facility, University of Notre Dame, Indiana, United States of America

W.M.Leevy.2@nd.edu

Corresponding Author

W. Matthew Leevy, Ph.D.

W.M.Leevy.2@nd.edu

(574) 631-1683

Keywords

Biomedical Imaging, Tomographic Imaging, Computed Tomography, CT, sub-surface laser engraving, SSLE, crystal engraving, anatomy, education

Short Abstract

A methodology is described herein for representing anatomical imaging data within crystals. We create scaled three-dimensional models of biomedical imaging data for use in Sub-Surface Laser Engraving (SSLE) of crystal glass. This tool offers a useful complement to computational display or three-dimensionally printed models used within clinical or educational settings.

Long Abstract

Biomedical imaging modalities like computed tomography (CT) and magnetic resonance (MR) provide excellent platforms for collecting three-dimensional data sets of patient or specimen anatomy in clinical or preclinical settings. However, the use of a virtual, on-screen display limits the ability of these tomographic images to fully convey the anatomical information embedded within. One solution is to interface a biomedical imaging data set with 3D printing technology to generate a physical replica. Here we detail a complementary method to visualize tomographic imaging data with a hand-held model: Sub Surface Laser Engraving (SSLE) of crystal glass. SSLE offers several unique benefits including: the facile ability to include anatomical labels, as well as a scale bar; streamlined multipart assembly of complex structures in one medium; high resolution in the X, Y, and Z planes; and semi-transparent shells for visualization of internal anatomical substructures. Here we demonstrate the process of SSLE with CT data sets derived from pre-clinical and clinical sources. This protocol will serve as a powerful and inexpensive new tool with which to visualize complex anatomical structures for scientists and students in a number of educational and research settings.

Introduction

Biomedical imaging modalities like computed tomography (CT) or magnetic resonance imaging (MRI) are routinely used by the medical, research, and academic communities to non-invasively examine the internal structures of human or biological subjects¹⁻³. In modern medicine, this technology enables more informed diagnoses and, consequently,

improved patient treatment⁴. In particular, CT provides an excellent opportunity for 3-D reconstruction due to its high resolution and isotropic voxel properties (identical length of each cube edge).⁵ Further, software packages are available that render biomedical imaging data in three dimensions (3D) for higher-order functions like computer-aided surgery and virtual endoscopy⁶. Within pre-clinical research, non-destructive imaging provides a translational platform on which to study disease models in mice and rats⁷. Digital libraries, such as the biological database Digital Morphology (<http://digimorph.org>), have been populated with CT data derived from different specimens or clinical disease states for ready access by the broader scientific and medical communities⁸.

At present, biomedical imaging data has been visualized in virtual space on computer screens, or in physical space with hand-held models. While computer software allows users to dissect and manipulate data, physical replicas are a nice complement with excellent educational benefit^{9, 10}. Traditional models have been generated using a low-cost casting process in which basic molds are filled with resin that hardens into the desired structure¹¹. Casted models are amenable to inexpensive mass manufacturing, but are limited to basic structures that are not derived from patient data sets. In the past five years, 3D printed replicas of human anatomy have become increasingly prevalent owing to the high complexity, and often times patient-specific, objects that may be generated and displayed. These models are created by machines that deposit liquid or molten plastics in additive layers, and have assisted doctors with diagnoses, complex surgeries, treatment of diseases, prosthetic design, and patient communication^{12, 13}. Further, the widespread availability of consumer-grade 3D printers within primary, secondary, and collegiate school settings serves to boost the pedagogical impact of shared anatomical model files^{14, 15}.

Overall, 3D printing has considerably advanced the development of anatomical models within medicine, yet it does have limitations. First, the creation of multi-part anatomical models may be challenging since additional work is often required to digitally bind separate pieces together that may otherwise fall apart.¹⁶ Also, the opacity of many 3D printed materials, especially for consumer-grade machines, prevents the visualization of internal sub-structures that provide additional insight about a specimen's bone and soft tissue. Further, liquid or molten plastic extruders constrain the resolution of 3D prints. The extruders of professional printers are approximately 50 μm in diameter and allow for a layer thickness of 14 μm , with a resolution of up to 600 dots per inch (DPI) in the X and Y axes and 1600 DPI in the Z axis^{17, 18}. In comparison, consumer-grade 3D printers have extruders that are around 400 μm in diameter and give a layer thickness of 100 μm and a resolution roughly equivalent to 42 DPI^{19, 20}. Price also varies substantially from consumer-grade to professional printers^{20, 21}. Additionally, high material costs prevent industrial mass production from achieving economies of scale²².

Sub Surface Laser Engraving (SSLE), or 3D crystal engraving, utilizes a laser beam to form small "bubbles" or dots with high precision at thousands of X, Y, Z coordinates within a rigid, high purity, cubic, glass matrix²³. Each dot is 20-40 μm , which yields resolution between 800-1200 DPI²⁴. Further each dot is semitransparent, enabling the

visualization of internal sub-structures. Multiple, disconnected parts are represented in the same crystal and additional material is not required for large, intricate structures. Since the matrix is solid, anatomical labels and size scale bars may be added to enhance the educational potential of the imaging data displayed within. Here we present a process in which X-ray computed tomography (CT) data are formatted for crystal SSLE. First, the data may be collected from commercial preclinical microCT systems, clinical scanners from radiology departments/unis, or sourced from online repositories like the National Biomedical Imaging Archive (<https://imaging.nci.nih.gov/ncia/login.jsf>)²⁵. Next, the files are converted to surface maps that are repaired and merged with anatomical labels and an appropriate scale bar. Final projects containing the model, associated labels and scale bar(s) are saved in STL format and sent to an engraving machine, typically operated by a third party industrial source. Here we demonstrate this approach with sheep bone core, fractured wrist, labeled foot, and labeled leg crystals to illustrate the capacity to incorporate both preclinical and clinical data, adjust the scale of anatomical structures, and coordinate a structure's geometry with crystal size. Given the facile nature of SSLE and already widespread use of STL files in 3D printing, the fabrication of labeled anatomical crystals provides an exciting, hand-held visualization tool for use within the academic and education communities.

Protocol

All human computed tomography data sets were anonymized according to approved SJRMC protocol.

1. CT Data Acquisition of Pre-Clinical and Clinical Samples

1.1. Conduct micro X-ray computed tomography to generate a pre-clinical data set. In the present case, use a microCT to image a bone core specimen with the following settings: 45 kV, 0.4 mA, and 1000 projections.⁵

1.2 Reconstruct raw data at high resolution (125 μm isotropic voxel). To further increase resolution, identify and reconstruct a 1 cm cube with a center at the volume's origin (10 μm isotropic voxel).

1.3 Export the reconstructed data set in DICOM format for additional processing.

1.4 Alternatively, acquire reconstructed CT data sets, such as those of the broken wrist and foot used in this study, from clinical collaborators (data shown here acquired from Saint Joseph Regional Medical Center) or open-source DICOM archives (<http://www.osirix-viewer.com/datasets/>).

1.5 Import files into the DICOM imaging software and export as decompressed DICOM files if necessary.

2. Data Processing

2.1 Open each DICOM data set (comprised of all image slices) using the 'Load DICOM' in the 'View' setting of the image processing software.

2.2 Save each data set as a NIfTI analyze, an established imaging format for scientific analysis. Import the NIfTI files into a program with established use in medical imaging computed and automated segmentation for the generation of surface maps (e.g., 3DSlicer).

2.3 Upload a given NIfTI file into the surface map generator program with the 'Add Data' tool.

2.4 Select the 'Grayscale Model Maker' tool with the specification "Create and Rename new model". Set lower threshold values to approximately 300 HU for the segmentation of bone.

2.5 Save grayscale models as STL files for further data processing.

2.6 Import each surface map into the 3D data preparation software (e.g., Netfabb Studio Basic) and select 'Repair' mode.

2.7 Use the 'Select Part' and 'Delete' tools to delete all surfaces that do not represent the structure of interest.

2.8 Use the 'Add Triangle' tool to partially cover the holes in surfaces and the 'Automatic Repair' script to completely close remaining gaps.

2.9 Select the 'Repair Degenerate Faces' script in the action menu to resolve edges without surface area and the 'Apply Repair' script to exit 'Repair' mode with the modified part.

2.10 Use the 'Cut' tool to remove unwanted features or reduce the size of the model. Designate the location of each cut within the 'X', 'Y', or 'Z' plane in the 'Cut' menu of the context area.

2.11 Use the 'Execute Cut' tool and choose 'Triangulate Cut' in the settings to automatically close all resulting holes.

2.12 Use the 'Select Part' and 'Delete' tools simultaneously to delete all surfaces resulting from the cut that do not represent the structure of interest.

Note: If the surface map is going to be adjoined with a scale bar, skip the following step. The anatomical feature and scale bar will be scaled simultaneously after they are united in a single STL.

2.13 Select the 'Scale' option to modify the dimensions of each surface map. Models may be dilated (bone core) or reduced in dimension (foot), or maintained at original size

(wrist) to fit within an 8 cm cube or 5 cm x 5 cm x 8 cm rectangular prism. Note that files at this stage may be sent for SSLE if no labels or scale bars are desired.

3. Anatomical Labeling

3.1 Select the 'New' option in the menu of the CAD program (e.g., Autodesk Inventor Professional) to create a new workbook using the metric template for a 'Standard (mm).ipt' part.

3.2 Select the 'Create 2D Sketch' option and choose any plane. Use the 'Text' tool in the 'Draw' menu of the toolbar to produce typed anatomical labels with the desired font and size (Times New Roman and 2.0 mm).

3.3 When finished, select the 'Finish Sketch' option in the 'Exit' menu of the toolbar.

3.4 Select the 'Extrude' tool from the 'Create' menu of the toolbar with the option '2D Text'. Designate an extrusion depth (2.0 mm) with the symmetric setting.

3.5 Export text labels in CAD format with the 'Save As Type' STL setting.

3.6 Open a new workbook for the production of a cylindrical label line. Select the 'File' option to create a new metric template with a 'Standard (mm).ipt' part.

3.7 Select the 'Create 2D Sketch' tool and choose any plane. Use the 'Center Point Circle' tool in the 'Draw' menu of the toolbar to produce a circle with a center at the origin.

3.8 Use the 'Dimension' tool in the 'Constraint' menu to set the diameter of the circle (1.0 mm).

3.9 When finished, select the 'Finish Sketch' option in the 'Exit' menu of the toolbar.

3.10 Select the 'Extrude' tool chosen from the 'Create' menu of the toolbar with the option '2D text'. Select an extrusion depth (10.00 mm) with the symmetric setting.

3.11 Export text labels and cylinders in CAD format with the 'Save as Type' .stl setting.

4. Attachment of Labels

4.1 Import models, text labels, and cylindrical label lines into the 3D data preparation software.

4.2 Translate text labels to the left or right of the associated anatomy using the 'Move Part' tool. Use the 'Rotate Part' tool to orient labels such that they face the same direction.

4.3 Translate and rotate cylindrical label lines using the 'Move Part' and 'Rotate Part' tools to connect labels to associated structures within the model.

4.4 If necessary, enter 'Repair' mode and use the 'Select Triangles' and 'Remove Selected Triangles' to reduce the size of cylinders to the appropriate length.

4.5 If using the basic version, select all parts and save as a project. Then reopen this project in the professional version.

4.6 In the professional version, select all parts and export as a single STL.

5. Scale Bar Design

Note: Two types of scale bars are designed in the CAD program. The first is present in Figure 1 and involves three separate scale bars, with tick marks at distinct measurements, lying on each plane. The second, included in Figures 2-4, is composed of perpendicular lines lying on the three axes and converging at a corner. Follow steps 5.1-5.2 to begin designing each scale bar.

5.1 Create a new workbook in the CAD program by selecting 'New' and 'Standard (mm).ipt' part.

5.2 Select 'Create 2D Sketch' and choose any of the three planes to begin working on.

Note: Continue with steps 5.3-5.16 to produce the first type of scale bar. The dimensions provided were implemented for the creation of a 1 cm scale bar with tick marks at 25 mm increments.

5.3 Use the 'Rectangle' and 'Dimension' tools to draw a rectangle (10 mm x 0.25 mm) with a width that corresponds to the desired length of the scale bar (10 mm) and a length of any reasonable value (0.25 mm). Place the lower left vertex on the origin so x-coordinates can be used for the spacing of tick marks.

5.4 To create the tick marks, utilize the 'Rectangle' tool to draw a rectangle directly above the scale bar. Constrain the size (0.025 mm x 0.432 mm) with the 'Dimension' tool.

5.5 Using the x-coordinates, translate the newly formed rectangle so it lies at the desired distance from the edge. This is the top of the tick mark.

5.6 To create the bottom of the tick mark, draw another rectangle, with the same dimensions as the top half, directly below the scale bar. Use the 'Align' tool to align the two halves of the tick mark.

5.7 Choose the 'Trim' tool in the 'Modify' menu and select the area where the scale bar and tick marks overlap. This will remove excess lines and allow the part to be interpreted as a single feature when extruded.

5.8 Repeat steps 5.4-5.7 for the rest of the tick marks.

5.9 When finished, select the 'Finish Sketch' option in the 'Exit' menu of the toolbar.

5.10 Choose 'Extrude' under the 'Create' menu and select the scale bar. Determine an extrusion distance and direction (0.25 mm and into the screen).

5.11 To design labels for the tick marks, choose 'Create 2D Sketch' and select the scale bar as the working plane.

5.12 Under the 'Draw' menu, select the 'Text' tool to create text with a certain font and size (Times New Roman and 0.25 mm). Translate the text to its desired position next to the scale bar.

5.13 When finished, select the 'Finish Sketch' option in the 'Exit' menu of the toolbar.

5.14 Select the 'Extrude' tool from the 'Create' menu of the toolbar with the option '2D Text'. Designate an extrusion depth (0.25 mm) and direction (into the screen).

5.15 Repeat steps 5.12-5.14 to create the other labels.

5.16 Export the completed scale bar in CAD format with the 'Save As Type' .stl setting.

Note: After finishing steps 5.1-5.16, continue with steps 5.17-5.31 to create the second type of scale bar. The measurements provided were utilized to create a scale bar that was 2 cm on each axis and 2 mm thick.

5.17 Select the 'Rectangle' tool to create a square and constrain the length and width (2 mm x 2 mm) with the 'Dimension' tool. The dimensions selected in this step will determine the thickness of the part.

5.18 Select 'Finish Sketch' to return to the 3D Model setting.

5.19 Under 'Create', choose 'Extrude' and select the square drawn in 2D Sketch mode. Choose the desired extrusion depth and direction (20 mm and into the screen).

5.20 Select 'Create 2D Sketch' and continue working on the same plane as the previous sketch.

5.21 Use the 'Rectangle' and 'Dimension' tools to draw a rectangle (2 mm x 18 mm) directly above the square. Match the length of the rectangle to the length of the square (2 mm) and the width should be the desired size of the scale bar minus the width of the square (20 mm-2 mm=18 mm). Press 'Finish Sketch' when completed.

5.22 Under 'Create', choose 'Extrude' and select the rectangle. Enter an extrusion depth, which should be the length of the square (2 mm), and select a direction (into the screen).

5.23 Rotate the part so that it looks like the letter 'L'. Create a new 2D sketch and select the front of the 'L' as the working plane.

5.24 Draw a square at the corner of the two rectangles using the 'Rectangle' tool. Constrain the dimensions (2 mm x 2 mm) so that it fits exactly in the corner. Exit the sketch with the 'Finish Sketch' tool.

5.25 Under 'Create,' choose 'Extrude' and select the newly created square. Enter an extrusion distance, which should be the desired size of the scale bar minus the width of the square (20 mm-2 mm=18 mm). Choose a direction (out of the screen) and apply the extrusion.

5.26 To add text indicating the dimensions of the scale bar, create a new 2D sketch off of any plane.

5.27 Use the 'Text' tool in the 'Draw' menu of the toolbar to produce a label with the desired font and size (Times New Roman and 2.5 mm).

5.28 Translate the text to its desired position next to the scale bar. Exit sketch mode by selecting 'Finish Sketch'.

5.29 Utilize the 'Extrude' tool and enter an extrusion distance that matches the thickness of the scale bar (2 mm) and direction that aligns the label with the scale bar (into the screen).

5.30 Repeat steps 5.26-5.30 using the other planes to create labels for all three axes.

5.31 When finished, export the scale bar and its accompanying labels in CAD format with the 'Save as Type' .stl setting.

6. Addition of Scale Bars to Anatomical Models

6.1 Open the anatomical model in the 3D data preparation software and import the scale bar.

6.2 Use the 'Move Part' and 'Rotate Part' tools to orient the scale bar next to the anatomical model.

6.3 If the first type of scale bar was created, import the part two more times. Translate and rotate the individual scale bars so one lies on each axis.

6.4 If using the basic version, select all parts and save as a project.

6.5 Open the file in the professional version. Select all parts and export as a single STL.

Note: Dimensions are retained when surface maps and scale bars are imported into the basic or professional version. Prior to engraving, surface maps, along with associated

labels and scale bars, are scaled to fit inside the crystals. Since scale bars are scaled at the same rate as models, alterations in the sizes of scale bars are representative of dimension changes in the anatomical structures.

7. Reduction of Faces

7.1 Utilize the 'Import Mesh' tool to add an STL file in the 3D mesh-processing program. Adjustments will be applied to the surface model and all components, including text and scale bars, since the software interprets the mesh as one part.

7.2 Under 'Filters' and 'Remeshing, Simplification and Reconstruction,' select the 'Quadratic Edge Collapse Decimation' tool to reduce the number of faces present within the mesh.

7.3 Enter the desired number of faces (100,000) under the 'Target number of faces' and select 'Apply.' This operation is done to create a manageable file size for the SSLE software, and prevent excess engraving times.

7.4 Export the finished product as an STL using the 'Export Mesh As...' setting.

8. Model Engraving in Crystal

Note: Completed STL files are forwarded to an industrial collaborator, where glass crystals are laser engraved to produce physical models of the anatomical data. For inquiries and further assistance, please contact the industry authors of this manuscript.

8.1 Open the STL file into a laser engraving software program and convert to a SCAX file.

8.2 Import the SCAX file in a software package connected to the 3D laser engraving machine.

8.3 Define a crystal size appropriate for interfacing with the SCAX file.

8.4 Set the power of the laser and enter a voltage and density. While 8.5 V and 0.2 are typically selected for voltage and density, other measurements can be determined by reducing the voltage and increasing the density, making sure that the crystal does not crack or break.

8.5 Send the file to a 3D laser engraver for crystal production.

Representative Results

Sub-surface laser engraving of glass crystals is a profound means to visualize numerous types of biomedical tomographic imaging data. Figure 1 incorporates preclinical CT data, while Figures 2-4 demonstrate how clinical CT scans can also be utilized. Since dimensions are modified prior to engraving, structures of varying sizes can be represented through laser engraving. While Figure 2 exemplifies how anatomies can be printed to scale, most structures need to be scaled up or down. Two types of scale bars

can be implemented to measure dimension changes: one that spans the sides of the structure and another with the three axes converging at a corner. The first type is ideal for dilated structures, such as the bone core, while the second type is best suited for to-scale or reduced structures. Further the size of the crystal is paired with the shape of the anatomical structure. As a result, the foot was placed in a cube while the leg was suspended in a rectangular prism.

A key feature of sub-surface engraving is the ability to attach text labels to anatomical features. The technique can be applied to various types of imaging data, with optimal label placement depending on the geometry of the structure. In Figure 2, the text was placed on two planes to space the labels out and avoid obstructing the view of the anatomy. For Figures 3 and 4, bones could be clearly viewed from one side so the labels were placed on a single plane.

Figure 1. Pre-clinical CT data of a sheep bone core set, displayed virtually and suspended in a 3D engraved crystal.

Imaging software was utilized to generate and attach scale bars to a surface map of a 1 cm isotopic sheep bone (left). The structure underwent a five-fold increase in dimension along each axis, as indicated by the scale bars, and was laser engraved in an 8 cm square crystal (right).

Figure 2. Clinical CT data of a broken wrist with anatomical labels, displayed virtually and engraved in crystal.

A clinical CT data set of a human wrist with a broken radius was converted into a surface map through computer software. Anatomical labels and a 2 cm scale bar were generated using computer-aided design (CAD) and attached to the model (left). A 3D laser engraver inscribed the structure in an 8 cm cube crystal (right). The scale bar retained its size, demonstrating the wrist was produced to scale.

Figure 3. Anatomically labeled human foot with anatomical labels, displayed virtually and engraved in crystal.

A CT data set of a human foot was converted into a grayscale model with imaging software. Text and a 4 cm scale bar were created using CAD and incorporated with the surface map (left). The model was reduced to half its size and laser engraved in an 8 cm crystal cube (right).

Figure 4. Clinical CT data set of a human leg anatomically labeled using computer software and engraved in crystal.

Software packages were utilized to prepare a surface map from a full human CT scan and to section the leg from the rest of the body. Anatomical labels and a 2.5 cm scale bar designed with CAD were attached (left) and the structure was engraved in a 5 cm x 5 cm x 8 cm crystal (right). The scale bar in the crystal illustrates the leg was scaled down in a 5:3 ratio.

Table 1. Advantages and disadvantages of 3D printing and SSLE for the production of anatomical models.

3D printing and SSLE are two means for visualizing biomedical tomographic imaging data, and each possesses a number of strengths and weaknesses in regards to the creation of physical models of the data.

Discussion

Preclinical and clinical data sets acquired through biomedical imaging modalities have been instrumental in modern research and medical advancements. Prior means of biomedical data visualization included computer display and physical models generated from traditional casting or modern 3D printing approaches. Here we describe a 3D crystal engraving method as an alternative means for visualizing tomographic biomedical data since it generates well-defined, labeled models in a straightforward fashion. These relatively inexpensive models may be widely used as educational tools. The utilization of crystal engraving to accurately represent anatomical data gives it high potential in clinical and educational settings. The ability to visualize data in a physical, three-dimensional format overcomes the limitations of traditional forms of education using flat images or virtual renderings⁹. High resolution of engraved structures and the attachment of labels to specific visible features facilitate the use of these models for patient or student education. In addition, this modality offers the ability to identify and observe causes and aspects of disease states within a specimen. For example, the classification and location of a bone fracture, like the fractured wrist noted in Figure 2, provides a more comprehensive understanding of the relation of disease states and other physically apparent signs and/or patient symptoms.

Through 3D crystal engraving, preclinical and clinical CT data sets were represented as physical structures inscribed within crystals. Preclinical CT data were acquired using a microCT scanner, while clinical CT images were gathered from clinical radiological sources. Before further processing, clinical imaging data is converted to decompressed DICOM files via imaging software. Subsequent software programs transform reconstructed DICOM files into surface maps. Modification of these surface maps and generation of anatomical labels and scale bars are accomplished with data preparation software and computer-aided design (CAD). Completed STL files are reduced and converted to SCAX files. After the crystal size and laser power are set, files are read by a 3D laser engraving machine that creates the free-form anatomical structures in crystal.

The process described above can be applied to various clinical and preclinical data sets. While CT datasets were implemented in this project, it is possible that data obtained from other imaging modalities can be visualized in crystal, including 3D ultrasound (US), Magnetic Resonance Imaging (MRI), and Positron Emission Tomography (PET). Also, other human anatomical structures and biological specimens may be imaged and represented in this medium. However, the crystals come in predetermined sizes and structures will need to be cut or scaled accordingly. It is advisable to match the geometry of the anatomical part with the size of the crystal. For example, a leg best fits in a 5 cm x 5 cm x 8 cm rectangular solid (Figure 4), while a foot is suited for an 8 cm cube (Figure 3). Changes to the size, font, and thickness of text can be carried out in CAD software. Additionally, it is best to place labels on one or two planes in order to clearly read labels without obstructing the view of the anatomy when rotating the crystal to other faces.

Two additional factors must be considered when performing SSLE of anatomical data: the number of faces within a surface map, and the size of each point that is laser engraved into the crystal. These factors affect the number and size of the points that will absorb incident light and thus potentially enhance or detract from a given SSLE visualization. First, the number of faces, which is directly proportional to the number of points in 3D space, will influence both the overall resolution and “brightness/contrast” of the displayed model. In each of the examples presented herein, the completed STL file was reduced to 100,000 faces without apparent degradation of the resulting crystal product, regardless of size or magnification. The overall brightness/contrast was also acceptable using this approach. The 100,000 value is the safe range for the engraver used as not to overtax the software and hardware. However, in some cases, additional faces may be needed to properly display a given data set, and these files may be considered experimental until successfully completed. In addition, the size of each point that is “burned” into the crystal may be tuned via the voltage and “density” input values of the engraver to enhance the output brightness contrast. In the present cases, default values of Voltage: 8.5 and Density: 0.2 were selected. While these values represent a starting point, they may be altered in a trial and error fashion to improve data visualization as needed.

There are a number of advantages of utilizing 3D crystal engraving for the display of preclinical and clinical imaging data. Crystals are typically produced in under 30 minutes, while 3D printed structures may require several hours, depending on their size and complexity^{16, 20, 22}. Laser engraving may be used to represent suspended structures without the use of support, facilitating the production of intricate or hanging features of the anatomy without reducing accuracy with additional material¹⁶. With a resolution of 800-1200 DPI and an accuracy of less than 10 μm , these models closely resemble medical data²⁴. While professional-grade 3D printers have a similar resolution of roughly 600 DPI in the XY and 1600 DPI in the Z, they are generally less accurate (20-200 μm)^{17, 19, 20} (Table 1).

3D crystal engraving possesses strong potential but is limited in a few areas. Since data is engraved inside crystal, users cannot have a tactile experience with the anatomical parts. To-scale representations are difficult to produce as data is typically scaled up or down to fit in the crystals. Furthermore, the laser can only engrave in grayscale with minimal contrast. The density of the structure is also constrained by the laser’s ability to process the data. The overall stability of crystals is an advantage to potential use over several years, but the solid glass may not withstand dropping on hard surfaces (Table 1).

Despite these limitations, 3D crystal engraving holds significant value as a medium for the visualization of biomedical data. While starting material and support need to be taken into account with 3D printers, these aspects do not need to be considered for laser engraving. More complex parts, such as the human foot, can be represented as a result. While production time increases slightly with more intricate structures, no additional material is required and the cost of the model remains the same. The laser’s ability to burn glass in a dot-by-dot fashion produces highly defined structures that display the fine details of biomedical data, as noted in the broken radius in Figure 2. Additionally, the

placement of these structures inside crystals makes them resistant to outside damage. Unlike solid plastics utilized on many 3D printing platforms, the translucent glass surfaces allow internal structures to be visualized in a straightforward fashion. One of the most powerful tools of 3D crystal engraving is its capability to label individual parts, and also add a scale bar for size reference. This technique adds substantial educational value to the crystals as students of all levels can learn anatomy and interact with clinical data, two valuable components of biological and medical education, in one model. Combined with the ability to hold them in the palm of a hand and view structures at a variety of angles, labeling greatly enhances the educational value of these models. As a result, 3D engraved crystals have wide applicability for use in anatomy courses, clinical practice, and general education.

Acknowledgements

We thank the College of Science Summer Undergraduate Research Fellowship (SURF) for their financial support of this project. The authors also thank Prof. Glen Niebur, University of Notre Dame, for providing bone samples (detailed above) used in this study.

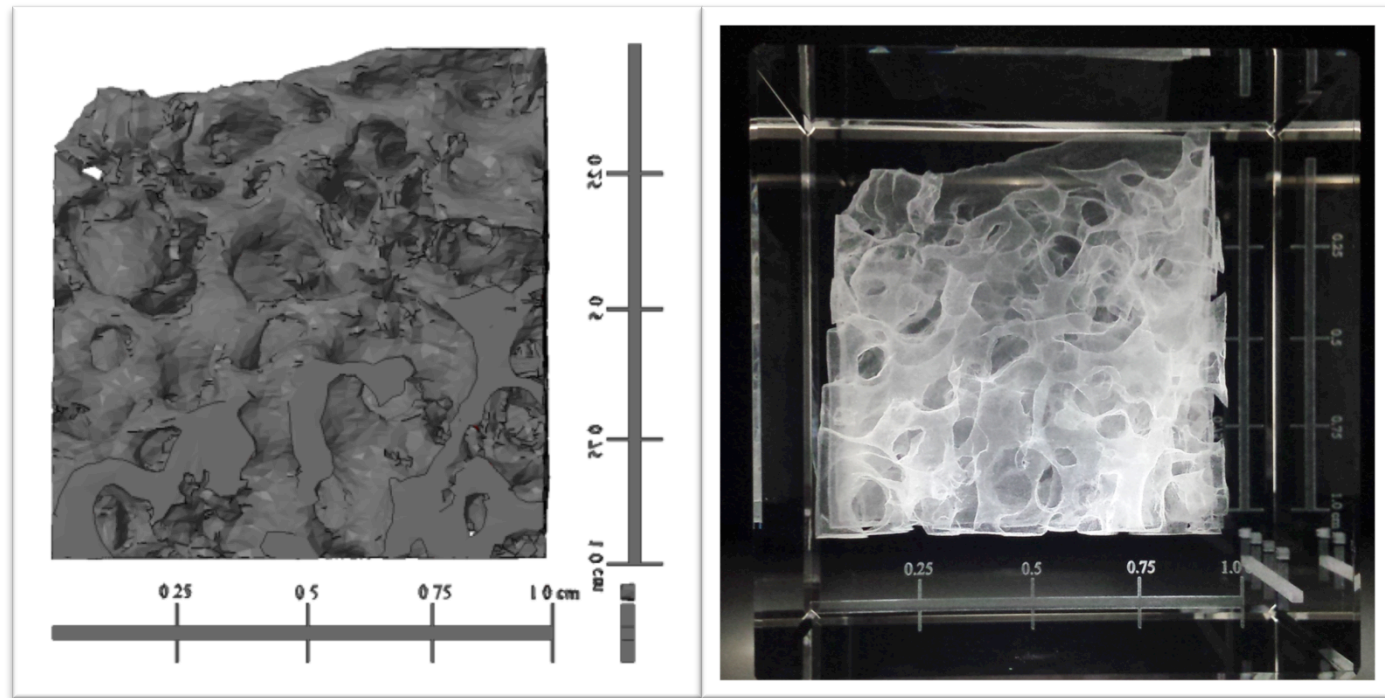
Disclosures

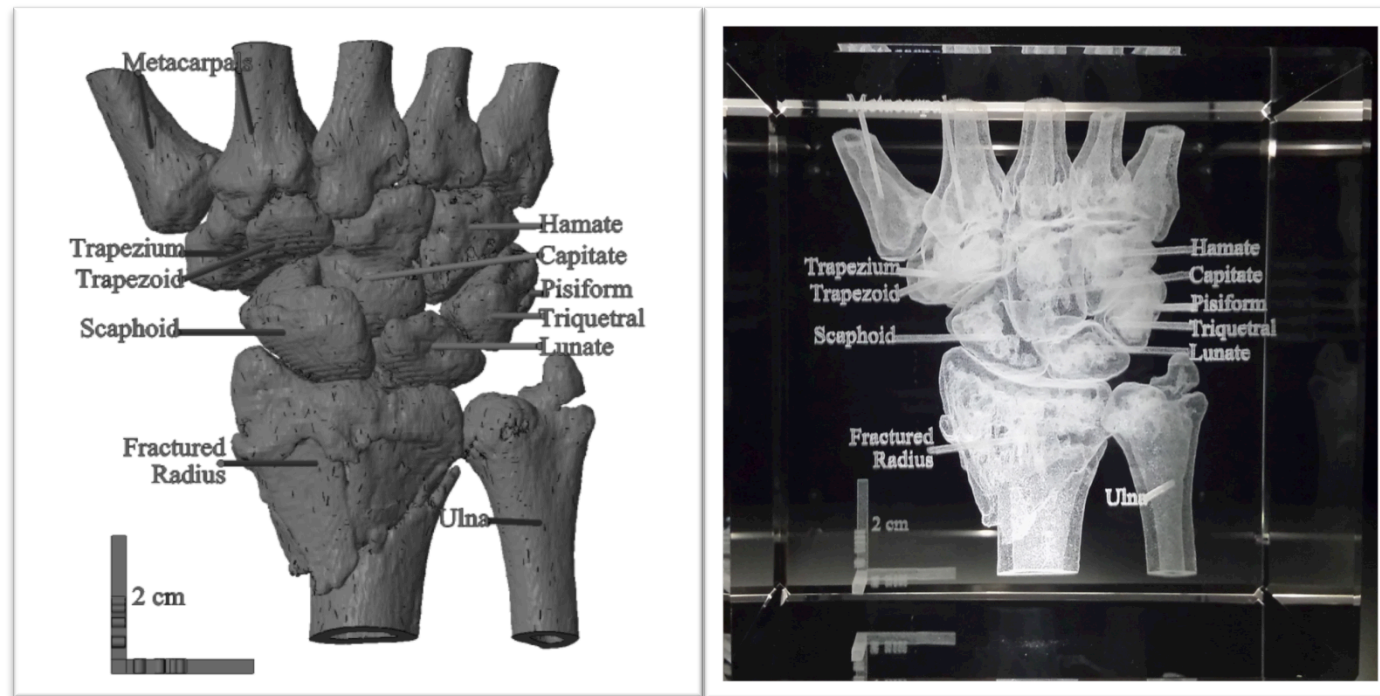
The authors have nothing to disclose.

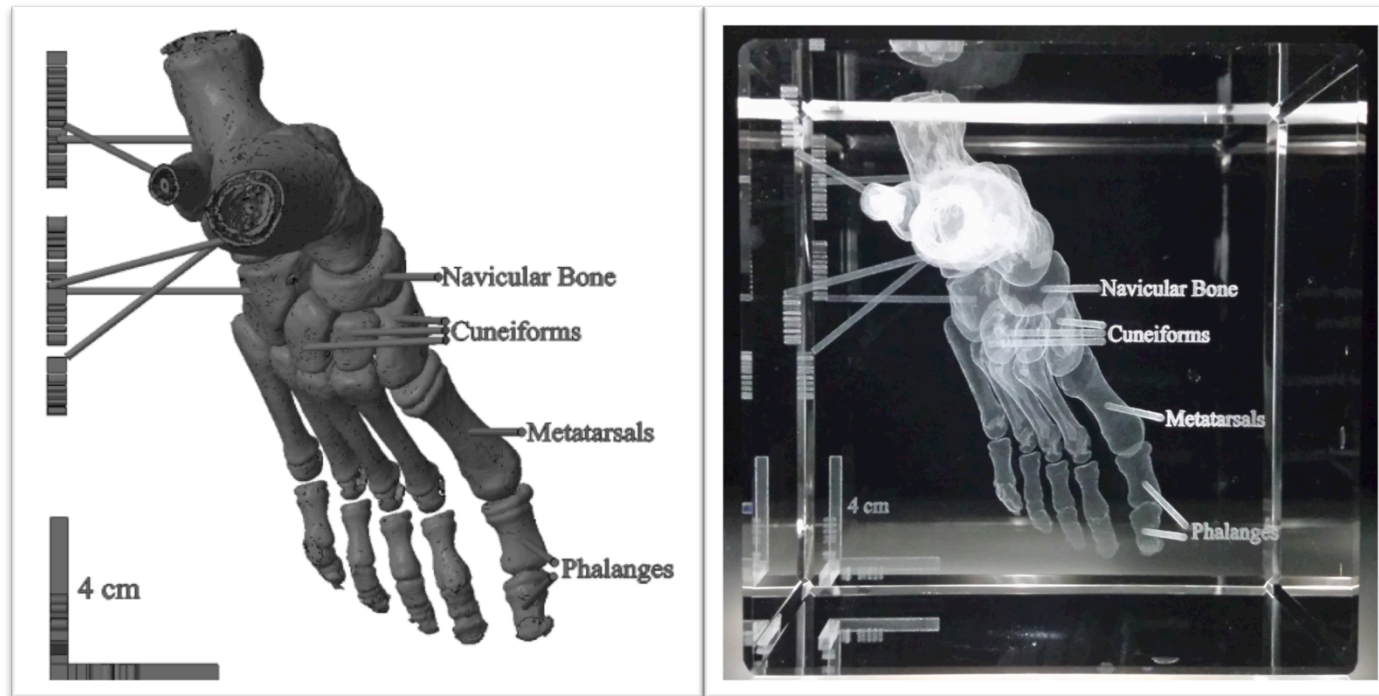
References

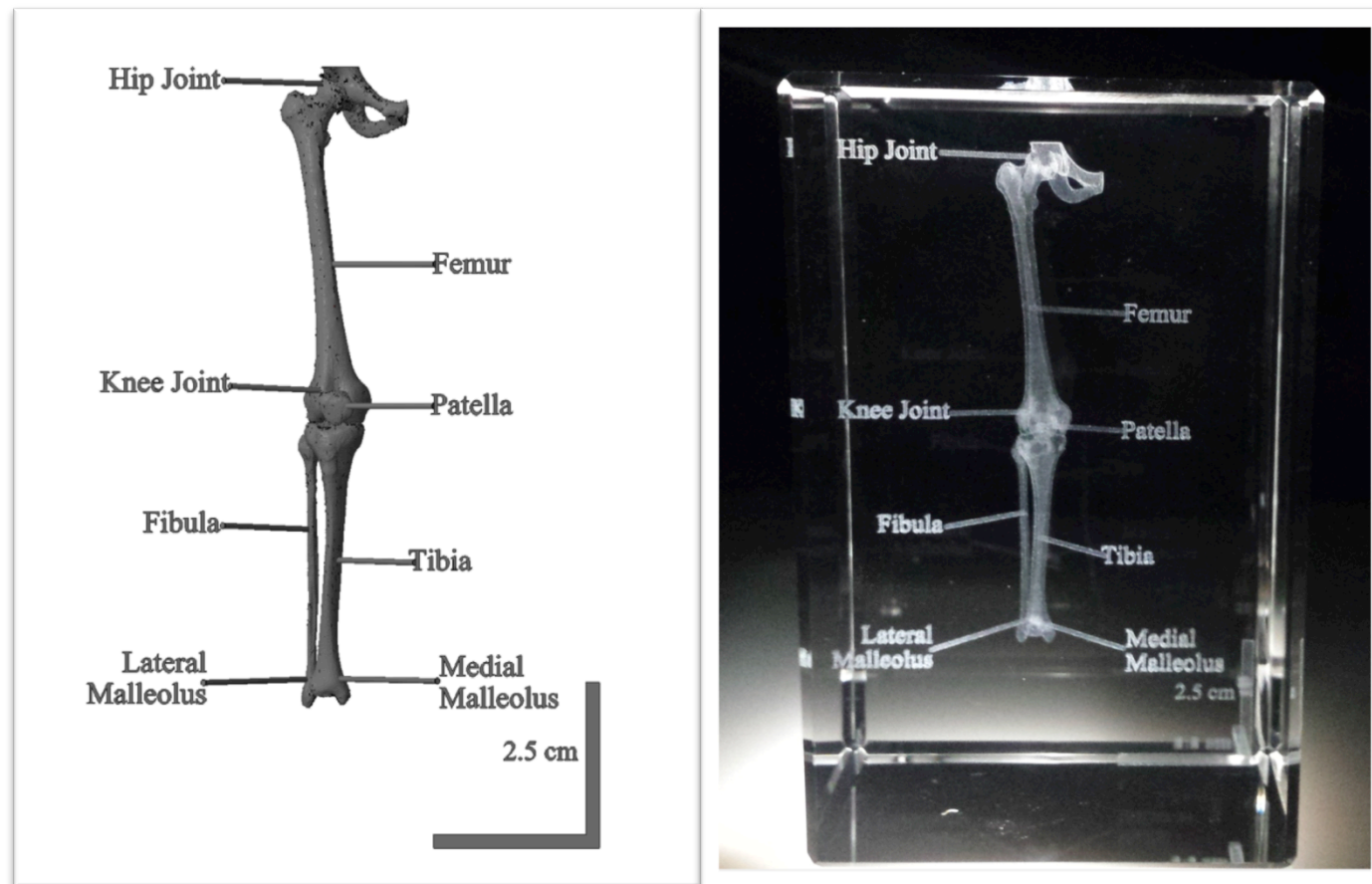
1. Edelman, R. & Warach, S. Magnetic Resonance Imaging. *N. Engl. J. Med.* **328** (10), 708-716 (1993).
2. Momose, A., Takeda, T., Itai Y., & Hirano, K. Phase-contrast X-ray computed tomography for observing biological soft tissues. *Nat. Med.* **2** (4), 473-475, doi:10.1038/nm0496-473 (1996).
3. Paulus, M., Gleason, S., Kennel, S., Hunsicker, P., & Johnson, D. High Resolution X-ray Computed Tomography: An Emerging Tool for Small Animal Cancer Research. *Neoplasia*. **2** (1), 62-70, doi:10.1038/sj.neo.7900069 (2000).
4. Robb, R. 3D visualization in biomedical applications. *Annu. Rev. Biomed. Eng.* **1** (1) 377-399, doi:10.1146/annurev.bioeng.1.1.377 (1999).
5. Hsieh, J. Advanced CT Applications. In: *Computed Tomography, Second Edition: Principles, Design, Artifacts, and Recent Advances*. Chapter 12, Section 1, doi:10.1117/3.817303.ch12, (2009).
6. Robb, R. The biomedical imaging resource at Mayo Clinic. *IEEE Trans. Med. Imaging*. **20** (9), 854-867, doi:10.1109/42.952724 (2001).
7. Davison, C., *et al.* Multimodal Optical, X-Ray CT, and SPECT Imaging of a Mouse Model of Breast Cancer Lung Metastasis. *Curr. Mol. Med.* **13** (3), 368-376, doi:10.2174/1566524011313030006 (2013).
8. *Digital Morphology [Internet]*. Available from: <http://www.digimorph.org>.
9. Preece, D., Williams, S., Lam, R., & Weller, R. "Let's Get Physical": Advantages of a physical model over 3D computer models and textbooks in learning imaging anatomy. *Anat. Sci. Educ.* **6** (4), 216-224, doi:10.1002/ase.1345 (2013).

10. Torres, K., Staskiewicz, G., Sniezynski, M., Drop, A., & Maciejewski, R. Application of rapid prototyping techniques for modelling of anatomical structures in medical training and education. *Folia Morphol.* **70** (1), 1-4 (2011).
11. Camaros, E., Sanchez-Hernandez, C., & Rivals, F. Make it clear: molds, transparent casts and lightning techniques for stereomicroscopic analysis of taphonomic modifications on bone surfaces. *J. Anthropol. Sci.* **94**, 223-230, doi:10.4436/jass.94023 (2016).
12. Rengier, F., *et al.* 3D Printing based on imaging data: review of medical applications. *Int. J. Comput. Assist. Radiol. Surg.* **5** (4), 335-341, doi: 10.1007/s11548-010-0476-x (2010).
13. Esses, S., Berman, P., Bloom, A., & Sosna, J. Clinical Applications of Physical 3D Models Derived From MDCT Data and Created by Rapid Prototyping. *AJR Am. J. Roentgenol.* **196** (6), W683-W688, doi:10.2214/AJR.10.5681 (2011).
14. Canessa, E., Fonda, C., Zennaro, M. & DEADLINE, N. Low-cost 3D Printing for Science, Education and Sustainable Development. *Low-Cost 3D Printing.* **11** (2013).
15. Schelly, C., Anzalone, G., Wijnen, B., and Pearce, J. Open-source 3-D printing technologies for education: Bringing additive manufacturing to the classroom. *J. Vis. Lang. Comput.* **28**, 226-237, doi:10.1016/j.jvlc.2015.01.004 (2015).
16. Bourke, P. Scientific Data Visualization Using Techniques Normally Reserved for more Frivolous Activities. *GTSF Int. J. Comput.* **4** (3), 35-41 (2015).
17. *Hardware Highlight: Stratasys Objet500 Connex [Internet]*. Intellectual Ventures Laboratory. Available from: <http://www.intellectualventureslab.com/invent/hardware-highlight-3d-printer>. (2016).
18. *Stratasys Production Series [Internet]*. Stratasys. Available from: <http://www.stratasys.com/3d-printer/production-series>. (2016).
19. *Products Overview [Internet]*. MakerBot. Available from: <http://www.store.makerbot.com/all-printers>. (2016).
20. Evans, B. A World of 3D Printers. *Practical 3D Printers: The Science and Art of 3D Printing*. Apress, New York, NY, (2012).
21. *J750 Stratasys-3D printer [Internet]*. Aniwaa. Available from: <http://www.aniwaa.com/product/3d-printers/stratasys-j750/>. (2016).
22. Berman, B. 3-D printing: The new industrial revolution. *Bus. Horizons.* **55**, 155-162, doi:10.1016/j.bushor.2011.11.003 (2012).
23. Macken, J. & Palanos, P. Image Transfer Laser Engraving. *United States Patent.* 4,156, 124 (1979).
24. *3D Laser Engraving Machine STNDP-801AB4 [Internet]*. STN. Available from: <http://www.stnlaser.com/products/3d-laser-engraving-machine-stndp-801ab4.html> (2016).
25. *National Biomedical Imaging Archive [Internet]*. Available from: <https://imaging.nci.nih.gov/ncia/login.jsf>. (2016).









3D Printing

Advantages

- Tactile experience
- Full color models
- To-scale representation possible with larger variety of structures
- Solid plastic material resistant to drops
- Inexpensive consumer-grade printers available
- High resolution of professional-grade printers

Disadvantages

- Difficile to link separate anatomical subunits in 3D space
- Cost and production time vary with complexity
- More susceptible to production errors
- Post-production washes may be necessary
- Resolution limited by plastic extruders
- Parts may chip off of model
- Costly professional grade printers
- Prices of materials vary greatly

Sub-Surface Laser Engraving (SSLE) of Crystals

Creation of structures in free space

Generation of multi-part models

Attachment of anatomical labels

Scale bars suspended within model

High resolution and accuracy

Short production time

Easy to link separate anatomical subunits together in 3D space

Structures within crystal not susceptible to outside damage

Low material costs

Laser engravers moderately priced

No tactile experience

Grayscale

Size limited by crystal

To-scale representation difficult

Density constrained by laser

Crystals may chip or break when dropped

Name of Material/ Equipment

3D Laser Engraving Machine

3D Slicer

Albira micro CT

Autodesk Inventor Professional 2013

Clinical CT data sets

MeshLab

Netfabb Studio Basic

Netfabb Studio Professional

OsiriX Lite Imaging Software

PMOD

Company

Wuhan Synpny Laser Co., Ltd.

Slicer

Bruker Corporation

Autodesk, Inc.

Saint Joseph Regional Medical Center

Institute of the National Research Council of Italy (ISTI-CNR)

netfabb GmbH

netfabb GmbH

Pixmeo

PMOD Technologies LLC

Catalog Number

STNP-801AB4

Version 4.3.1

64bit edition, 2013 RTM, Build 138

Volume 1.3.4 BETA

Version 4.9.0

Version 5.2.1 64bit

Version 7.0.3

Version 3.306

Comments/Description

3D Laser Engraver

Surface Map Generator Program

Alternatively, a PET/SPECT/CT scanner can be utilized

CAD program

3D Mesh Processing Program

3D Data Preparation Software

3D Data Preparation Software-Professional

DICOM Imaging Software

Image Processing Software



1 Alewife Center #200
Cambridge, MA 02140
tel. 617.945.9051
www.jove.com

ARTICLE AND VIDEO LICENSE AGREEMENT

Title of Article:

Sub-Surface Laser Engraving (SSLE) of Glass Crystals as a Medium for the Display of Biomedical Tomographic Imaging Data and Associated Labels

Author(s):

Betts, A., McGoldrick, M., Dethlefs, C., Piotrowicz, J., Van Avermaete, T., Maki, J., Gerstler, S., & Leevy, W.M.

Item 1 (check one box): The Author elects to have the Materials be made available (as described at

<http://www.jove.com/publish>) via: ☐ Standard Access ☒ Open Access

Item 2 (check one box):

- ☒ The Author is NOT a United States government employee.
- ☐ The Author is a United States government employee and the Materials were prepared in the course of his or her duties as a United States government employee.
- ☐ The Author is a United States government employee but the Materials were NOT prepared in the course of his or her duties as a United States government employee.

ARTICLE AND VIDEO LICENSE AGREEMENT

1. Defined Terms. As used in this Article and Video License Agreement, the following terms shall have the following meanings: “**Agreement**” means this Article and Video License Agreement; “**Article**” means the article specified on the last page of this Agreement, including any associated materials such as texts, figures, tables, artwork, abstracts, or summaries contained therein; “**Author**” means the author who is a signatory to this Agreement; “**Collective Work**” means a work, such as a periodical issue, anthology or encyclopedia, in which the Materials in their entirety in unmodified form, along with a number of other contributions, constituting separate and independent works in themselves, are assembled into a collective whole; “**CRC License**” means the Creative Commons Attribution-Non Commercial-No Derivs 3.0 Unported Agreement, the terms and conditions of which can be found at: <http://creativecommons.org/licenses/by-nc-nd/3.0/legalcode>; “**Derivative Work**” means a work based upon the Materials or upon the Materials and other pre-existing works, such as a translation, musical arrangement, dramatization, fictionalization, motion picture version, sound recording, art reproduction, abridgment, condensation, or any other form in which the Materials may be recast, transformed, or adapted; “**Institution**” means the institution, listed on the last page of this Agreement, by which the Author was employed at the time of the creation of the Materials; “**JoVE**” means MyJoVE Corporation, a Massachusetts corporation and the publisher of *The Journal of Visualized Experiments*; “**Materials**” means the Article and / or the Video; “**Parties**” means the Author and JoVE; “**Video**” means any video(s) made by the Author, alone or in conjunction with any other parties, or by JoVE or its affiliates or agents, individually or in collaboration with the Author or any other parties, incorporating all or any portion of the Article, and in which the Author may or may not appear.

2. Background. The Author, who is the author of the Article, in order to ensure the dissemination and protection of the Article, desires to have the JoVE publish the Article and create and transmit videos based on the Article. In furtherance of such goals, the Parties desire to memorialize in this Agreement the respective rights of each Party in and to the Article and the Video.

3. Grant of Rights in Article. In consideration of JoVE agreeing to publish the Article, the Author hereby grants to JoVE, subject to **Sections 4** and **7** below, the exclusive, royalty-free, perpetual (for the full term of copyright in the Article, including any extensions thereto) license (a) to publish, reproduce, distribute, display and store the Article in all forms, formats and media whether now known or hereafter developed (including without limitation in print, digital and electronic form) throughout the world, (b) to translate the Article into other languages, create adaptations, summaries or extracts of the Article or other Derivative Works (including, without limitation, the Video) or Collective Works based on all or any portion of the Article and exercise all of the rights set forth in (a) above in such translations, adaptations, summaries, extracts, Derivative Works or Collective Works and (c) to license others to do any or all of the above. The foregoing rights may be exercised in all media and formats, whether now known or hereafter devised, and include the right to make such modifications as are technically necessary to exercise the rights in other media and formats. If the “Open Access” box has been checked in **Item 1** above, JoVE and the Author hereby grant to the public all such rights in the Article as provided in, but subject to all limitations and requirements set forth in, the CRC License.

ARTICLE AND VIDEO LICENSE AGREEMENT

4. Retention of Rights in Article. Notwithstanding the exclusive license granted to JoVE in **Section 3** above, the Author shall, with respect to the Article, retain the non-exclusive right to use all or part of the Article for the non-commercial purpose of giving lectures, presentations or teaching classes, and to post a copy of the Article on the Institution's website or the Author's personal website, in each case provided that a link to the Article on the JoVE website is provided and notice of JoVE's copyright in the Article is included. All non-copyright intellectual property rights in and to the Article, such as patent rights, shall remain with the Author.

5. Grant of Rights in Video – Standard Access. This **Section 5** applies if the "Standard Access" box has been checked in **Item 1** above or if no box has been checked in **Item 1** above. In consideration of JoVE agreeing to produce, display or otherwise assist with the Video, the Author hereby acknowledges and agrees that, Subject to **Section 7** below, JoVE is and shall be the sole and exclusive owner of all rights of any nature, including, without limitation, all copyrights, in and to the Video. To the extent that, by law, the Author is deemed, now or at any time in the future, to have any rights of any nature in or to the Video, the Author hereby disclaims all such rights and transfers all such rights to JoVE.

6. Grant of Rights in Video – Open Access. This **Section 6** applies only if the "Open Access" box has been checked in **Item 1** above. In consideration of JoVE agreeing to produce, display or otherwise assist with the Video, the Author hereby grants to JoVE, subject to **Section 7** below, the exclusive, royalty-free, perpetual (for the full term of copyright in the Article, including any extensions thereto) license (a) to publish, reproduce, distribute, display and store the Video in all forms, formats and media whether now known or hereafter developed (including without limitation in print, digital and electronic form) throughout the world, (b) to translate the Video into other languages, create adaptations, summaries or extracts of the Video or other Derivative Works or Collective Works based on all or any portion of the Video and exercise all of the rights set forth in (a) above in such translations, adaptations, summaries, extracts, Derivative Works or Collective Works and (c) to license others to do any or all of the above. The foregoing rights may be exercised in all media and formats, whether now known or hereafter devised, and include the right to make such modifications as are technically necessary to exercise the rights in other media and formats. For any Video to which this Section 6 is applicable, JoVE and the Author hereby grant to the public all such rights in the Video as provided in, but subject to all limitations and requirements set forth in, the CRC License.

7. Government Employees. If the Author is a United States government employee and the Article was prepared in the course of his or her duties as a United States government employee, as indicated in **Item 2** above, and any of the licenses or grants granted by the Author hereunder exceed the scope of the 17 U.S.C. 403, then the rights granted hereunder shall be limited to the maximum rights permitted under such

statute. In such case, all provisions contained herein that are not in conflict with such statute shall remain in full force and effect, and all provisions contained herein that do so conflict shall be deemed to be amended so as to provide to JoVE the maximum rights permissible within such statute.

8. Likeness, Privacy, Personality. The Author hereby grants JoVE the right to use the Author's name, voice, likeness, picture, photograph, image, biography and performance in any way, commercial or otherwise, in connection with the Materials and the sale, promotion and distribution thereof. The Author hereby waives any and all rights he or she may have, relating to his or her appearance in the Video or otherwise relating to the Materials, under all applicable privacy, likeness, personality or similar laws.

9. Author Warranties. The Author represents and warrants that the Article is original, that it has not been published, that the copyright interest is owned by the Author (or, if more than one author is listed at the beginning of this Agreement, by such authors collectively) and has not been assigned, licensed, or otherwise transferred to any other party. The Author represents and warrants that the author(s) listed at the top of this Agreement are the only authors of the Materials. If more than one author is listed at the top of this Agreement and if any such author has not entered into a separate Article and Video License Agreement with JoVE relating to the Materials, the Author represents and warrants that the Author has been authorized by each of the other such authors to execute this Agreement on his or her behalf and to bind him or her with respect to the terms of this Agreement as if each of them had been a party hereto as an Author. The Author warrants that the use, reproduction, distribution, public or private performance or display, and/or modification of all or any portion of the Materials does not and will not violate, infringe and/or misappropriate the patent, trademark, intellectual property or other rights of any third party. The Author represents and warrants that it has and will continue to comply with all government, institutional and other regulations, including, without limitation all institutional, laboratory, hospital, ethical, human and animal treatment, privacy, and all other rules, regulations, laws, procedures or guidelines, applicable to the Materials, and that all research involving human and animal subjects has been approved by the Author's relevant institutional review board.

10. JoVE Discretion. If the Author requests the assistance of JoVE in producing the Video in the Author's facility, the Author shall ensure that the presence of JoVE employees, agents or independent contractors is in accordance with the relevant regulations of the Author's institution. If more than one author is listed at the beginning of this Agreement, JoVE may, in its sole discretion, elect not take any action with respect to the Article until such time as it has received complete, executed Article and Video License Agreements from each such author. JoVE reserves the right, in its absolute and sole discretion and without giving any reason therefore, to accept or decline any work submitted to JoVE. JoVE and its employees, agents and independent contractors shall have

ARTICLE AND VIDEO LICENSE AGREEMENT

full, unfettered access to the facilities of the Author or of the Author's institution as necessary to make the Video, whether actually published or not. JoVE has sole discretion as to the method of making and publishing the Materials, including, without limitation, to all decisions regarding editing, lighting, filming, timing of publication, if any, length, quality, content and the like.

11. **Indemnification.** The Author agrees to indemnify JoVE and/or its successors and assigns from and against any and all claims, costs, and expenses, including attorney's fees, arising out of any breach of any warranty or other representations contained herein. The Author further agrees to indemnify and hold harmless JoVE from and against any and all claims, costs, and expenses, including attorney's fees, resulting from the breach by the Author of any representation or warranty contained herein or from allegations or instances of violation of intellectual property rights, damage to the Author's or the Author's institution's facilities, fraud, libel, defamation, research, equipment, experiments, property damage, personal injury, violations of institutional, laboratory, hospital, ethical, human and animal treatment, privacy or other rules, regulations, laws, procedures or guidelines, liabilities and other losses or damages related in any way to the submission of work to JoVE, making of videos by JoVE, or publication in JoVE or elsewhere by JoVE. The Author shall be responsible for, and shall hold JoVE harmless from, damages caused by lack of sterilization, lack of cleanliness or by contamination due to the making of a video by JoVE its employees, agents or independent contractors. All sterilization, cleanliness or decontamination procedures shall be solely the responsibility of the Author and shall be undertaken at the Author's


expense. All indemnifications provided herein shall include JoVE's attorney's fees and costs related to said losses or damages. Such indemnification and holding harmless shall include such losses or damages incurred by, or in connection with, acts or omissions of JoVE, its employees, agents or independent contractors.

12. **Fees.** To cover the cost incurred for publication, JoVE must receive payment before production and publication the Materials. Payment is due in 21 days of invoice. Should the Materials not be published due to an editorial or production decision, these funds will be returned to the Author. Withdrawal by the Author of any submitted Materials after final peer review approval will result in a US\$1,200 fee to cover pre-production expenses incurred by JoVE. If payment is not received by the completion of filming, production and publication of the Materials will be suspended until payment is received.

13. **Transfer, Governing Law.** This Agreement may be assigned by JoVE and shall inure to the benefits of any of JoVE's successors and assignees. This Agreement shall be governed and construed by the internal laws of the Commonwealth of Massachusetts without giving effect to any conflict of law provision thereunder. This Agreement may be executed in counterparts, each of which shall be deemed an original, but all of which together shall be deemed to be one and the same agreement. A signed copy of this Agreement delivered by facsimile, e-mail or other means of electronic transmission shall be deemed to have the same legal effect as delivery of an original signed copy of this Agreement.

A signed copy of this document must be sent with all new submissions. Only one Agreement required per submission.

CORRESPONDING AUTHOR:

Name:	W. Matthew Leevy		
Department:	Biological Sciences		
Institution:	University of Notre Dame		
Article Title:	Sub-Surface Laser Engraving (SSLE) of Glass Crystals as a Medium for the Display of Biomedical Tomographic Imaging Data and Associated Labels		
Signature:		Date:	07/29/16

Please submit a signed and dated copy of this license by one of the following three methods:

- 1) Upload a scanned copy of the document as a pdf on the JoVE submission site;
- 2) Fax the document to +1.866.381.2236;
- 3) Mail the document to JoVE / Attn: JoVE Editorial / 1 Alewife Center #200 / Cambridge, MA 02139

For questions, please email submissions@jove.com or call +1.617.945.9051



DEPARTMENT OF
BIOLOGICAL SCIENCES

UNIVERSITY OF NOTRE DAME

100 Galvin Life Sciences

PHONE 574/631-1683

FAX 574/631-6652

October 3, 2016

To the Editor,

Please find attached our itemized response to the editorial comments and reviewers 1-3 for our manuscript (55340) titled "Sub-Surface Laser Engraving (SSLE) of Glass Crystals as a Medium for the Display of Biomedical Tomographic Imaging Data and Associated Labels." We believe the review process has served to strengthen the manuscript and we are excited to move forward with publication in JoVE.

Sincere regards,

A handwritten signature in blue ink, appearing to read "W. M. Leevy".

W. Matthew Leevy, Ph.D.
Research Associate Professor
Director, Biological Imaging

Editorial Comments:

1) Please note that section 8 has been highlighted and we do intend to show the crystal engraving process in the video.

2) Line 281 – “profession” has been changed to “professional”

Line 525 – “diseases” has been changed to “disease”

3) Visualization – The overall software approach uses PMOD (www.pmod.com) to 3DSlicer (slicer.org) to Netfabb (netfabb.com). We are not running scripts on these platforms.

4) Two comments:

a) CT Imaging Reference: Please note that reference 5 has been added.

Hsieh, J. Advanced CT Applications. In: *Computed Tomography, Second Edition: Principles, Design, Artifacts, and Recent Advances*. Chapter 12, Section 1, doi:10.1117/3.817303.ch12, (2009).

b) 3.2 Edited to “typed anatomical labels”

5) Commercial branding removed.

6) “Outstanding” changed to “useful”

Reviewer 1:

No changes requested.

Reviewer 2: Major Concerns

Comment 1: The authors agree with the reviewer and this sentence has been deleted.

Comment 2: To address the reviewer’s concern, the sentence has been edited such that it reads “...materials, especially for consumer-grade machines,...”

Comment 3: This comment objects to the “protocols section as presented.” The intent of this manuscript is to provide a protocol, in line with the overall mission of JoVE. Further, we believe this work will be of significant interest to the biomedical imaging community at large since SSLE is not a widely known medium for data visualization. Further, we believe JoVE is a solid match

for this report as the video presentation of each anatomical crystal will highlight their visual impact.

Comment 4: This sentence has been edited for clarity as follows:

“2.1 Open each DICOM data set (comprised of all image slices) using the ‘Load DICOM’ in the ‘View’ setting of the image processing software.”

Comment 5: The reviewer addresses two important concepts in this section: The number of faces in a given surface, and the point size (density) that is inscribed into the crystal. To better address this question, the following paragraph has been added:

Two additional factors must be considered when performing SSLE of anatomical data: the number of faces within a surface map, and the size of each point that is lasered into the crystal. These factors affect the number and size of the points that will absorb incident light and thus potentially enhance or detract from a given SSLE visualization. First, the number of faces, which is directly proportional to the number of points in 3D space, will influence both the overall resolution and “brightness/contrast” of the displayed model. In each of the examples presented herein, the completed STL file was reduced to 100,000 faces without apparent degradation of the resulting crystal product, regardless of size or magnification. The overall brightness/contrast was also acceptable using this approach. The 100,000 value is the safe range for the engraver used as not to overtax the software and hardware. However, in some cases, additional faces may be needed to properly display a given data set, and these files may be considered experimental until successfully completed. In addition, the size of each point that is “burned” into the crystal may be tuned via the voltage and “density” input values of the engraver to enhance the output brightness contrast. In the present cases, default values of Voltage: 8.5 and Density: 0.2 were selected. While these values represent a starting point, they may be altered in a trial and error fashion to improve data visualization as needed.

Comment 6: The reviewer’s main concern is “novelty.” We believe the use of SSLE to visualize biomedical imaging data is relatively unknown within the clinical and pre-clinical imaging communities. As the reviewer notes, we have striven to include scale bars and anatomical labels to bolster the overall scientific output of the tomographic data. Overall, this manuscript would appear to be a great match for JoVE since it is difficult to convey the visual impact of the SSLE data in a 2D static image.

Comment 7: To address this comment, the “prices of material vary greatly” has been deleted. As an advantage to SSLE, we have simply stated that it has a “lower relative material cost per volume.”

Reviewer 2: Minor concerns

Comment 1: “Difficile” corrected to “difficult.”

Comment 2: The Advantages/Disadvantages table is labeled.

Comment 3: The concluding paragraph comments on the overall utility of the SSLE anatomical crystals, with the education benefits arising from interacting with the data in the glass medium.

Reviewer 3: No major concerns

Reviewer 3: Minor concern

Line 89: “leveraged” has been changed to “used”