

# Journal of Visualized Experiments

## Use of decellularized mammalian lung tissues to study cell: matrix interactions

--Manuscript Draft--

<b>Article Type:</b>	Invited Methods Article - JoVE Produced Video
<b>Manuscript Number:</b>	JoVE55167R3
<b>Full Title:</b>	Use of decellularized mammalian lung tissues to study cell: matrix interactions
<b>Keywords:</b>	extracellular matrix, decellularization, bioengineering, interstitial lung disease, pulmonary fibrosis, cellular phenotype, translational medicine, lung scaffolds
<b>Corresponding Author:</b>	Erica Herzog, M.D., Ph.D. Yale University School of Medicine New Haven, CT UNITED STATES
<b>Corresponding Author's Institution:</b>	Yale University School of Medicine
<b>Corresponding Author E-Mail:</b>	erica.herzog@yale.edu;huanxing.sun@yale.edu
<b>First Author:</b>	Christina Blaul
<b>Other Authors:</b>	Christina Blaul Jenna Balestrini Hongyi Pan Julia Winkler Haunxing Sun, Ph.D.
<b>Author Comments:</b>	
<b>Additional Information:</b>	
<b>Question</b>	<b>Response</b>
If this article needs to be "in-press" by a certain date, please indicate the date below and explain in your cover letter.	

**TITLE:**

Use of Decellularized Mammalian Lung Tissues to Study Cell: Matrix Interactions

**AUTHORS & Affiliations:**

Christina N. Blaul<sup>1,2</sup>, Jenna Balestrini<sup>3</sup>, Hongyi Pan<sup>4</sup>, Julia Winkler<sup>4</sup>, Erica L. Herzog<sup>4</sup>, Huanxing Sun<sup>4</sup>

<sup>1</sup> NSF Funded Biomedical MD-PhD REU in affiliation with Yale School of Medicine, Yale Pathology Department, Section of Pulmonary, Critical Care, and Sleep Medicine, New Haven, CT

<sup>2</sup> University of California, Merced, School of Natural Sciences: Molecular and Cellular Biology, Merced, CA

<sup>3</sup> Department of Anesthesiology, Yale School of Medicine, New Haven, CT

<sup>4</sup> Department of Internal Medicine, Section of Pulmonary, Critical Care, and Sleep Medicine, Yale School of Medicine, New Haven, CT

**CORRESPONDING AUTHOR:**

Huanxing Sun

Email: [huanxing.sun@yale.edu](mailto:huanxing.sun@yale.edu)

**OTHER AUTHORS EMAIL ADDRESSES:**

Christina N. Blaul: [cblaul@ucmerced.edu](mailto:cblaul@ucmerced.edu)

Jenna Balestrini: [jbalestrini@draper.com](mailto:jbalestrini@draper.com)

Hongyi Pan: [Hongyi.pan@yale.edu](mailto:Hongyi.pan@yale.edu)

Julia Winkler: [Julia.winkler@yale.edu](mailto:Julia.winkler@yale.edu)

Erica L. Herzog: [Erica.herzog@yale.edu](mailto:Erica.herzog@yale.edu)

**KEYWORDS:**

extracellular matrix, decellularization, bioengineering, interstitial lung disease, pulmonary fibrosis, cellular phenotype, translational medicine, lung scaffolds

**SUMMARY:**

This study presents an *ex vivo* platform based on decellularized lung tissue to study cell: matrix interactions in the healthy and diseased adult lung.

**ABSTRACT:**

Adult lung homeostasis is maintained by a balance of cellular processes within the tissue microenvironment. The extracellular matrix (ECM) serves a critical role in this context both by supporting organ structure and by integrating signals from a variety of stromal and recruited cell populations via interactions involving both biochemical and biophysical cues. Disruption of this interplay engenders an injury response that if excessive, prolonged, or unrepaired can lead to permanent tissue disruption and organ failure. Efficient repair of tissue injury is thought to represent a continuum of responses involving structural cells, resident and recruited inflammatory cells, and activated tissue fibroblasts that require an intact ECM possessing the proper composition and physical characteristics. The use of ECM scaffolds prepared from decellularized organs have recently gained widespread implementation in the study of lung

biology. Application of this method to the study of lung remodeling and repair demonstrates that decellularized lung scaffolds contain biophysical and biochemical cues that direct fate specification in a multitude of cells. Because studies of human lung tissue will be limited by the scarcity of starting material as well as the cost and sophistication of bioreactor-based recellularization strategies, it is necessary to scale down the decellularization and engraftment procedures from the entire lung to small segments of fresh lung tissue. The below protocol presents a decellularization system amenable for using fresh mammalian tissue obtained from both mice and humans and presents a representative recellularization and analytical algorithm that can be modified for tissues and cells from many sources.

## INTRODUCTION:

Adult lung homeostasis is maintained by a balance of cellular processes within the tissue microenvironment<sup>1-3</sup>. The extracellular matrix (ECM) serves a critical role in this context both by supporting organ structure and by integrating signals from a variety of stromal and recruited cell populations via interactions involving biochemical and biophysical cues<sup>4-6</sup>. Disruption of this interplay by endogenous or exogenous stimuli causes an injury response that, if prolonged, excessive, or unrepaired, can lead to permanent tissue disruption and organ failure<sup>7-9</sup>. These processes are thought to represent a continuum of responses resulting from incompletely understood interactions between structural cells, resident and recruited inflammatory cells, and activated tissue fibroblasts<sup>10</sup> that require an ECM<sup>11</sup>. However, due to the complex and numerous aspects of these interactions, *ex vivo* simulation of cell: matrix interactions is difficult to achieve in available experimental systems. Therefore, the generation of models that faithfully recapitulate the microenvironments of both the healthy and diseased lung remains a critical unmet need.

Methods adapted from commonly used bioengineering techniques have emerged as novel platforms to study the interactions between cells and their local environment. The use of scaffolds prepared from decellularized organs, which was first described more than three decades ago, has recently gained widespread implementation in this regard<sup>12</sup>. We refined this technique as the structural basis for the *ex vivo* generation of organotypic, functional lungs that are suitable for implantation and gas exchange *in vivo*<sup>4</sup>. Recent application of this method to the study of lung remodeling and repair demonstrates that the composition and physical structure of decellularized lung scaffolds obtained from normal and diseased lungs influence the fate specification of a multitude of cells<sup>4,13,14</sup>. Acellular matrices have been particularly useful in the study of human lung fibrosis, a difficult to treat condition characterized by the accumulation of excessive and compositionally aberrant ECM<sup>5,15-17</sup>. Because studies of human lung tissue will be limited by the scarcity of starting material as well as the cost and sophistication of bioreactor-based recellularization strategies, it is necessary to scale down the decellularization and engraftment procedures from the entire lung to small segments of fresh lung tissue. Thus, the objective of our study was to develop a simulation of the fibrotic lung microenvironment that can be used for *ex vivo* studies of cell: matrix interactions in a variety of contexts. The below protocol presents a decellularization system amenable for the use of freshly obtained mammalian tissue obtained from both mice and humans and presents a representative recellularization and a representative analytical algorithm that can be modified for tissues and

cells from many sources.

## PROTOCOL:

All of the procedures including animal use have been approved by Institutional Animal Care & Use Committee (IACUC) of Yale University. The use of human tissues and cells has been approved by Yale's Human Investigation Committee (HIC).

### 1. Mouse Lung Slice Decellularization Protocol

#### 1.1. Preparation of slices

1.1.1. Treat the mouse (C57/BL6, 6 to 8 weeks old, both male and female mice were used) with a lethal i.p (intraperitoneal) injection of Urethane or other anesthetic (1.5 g/kg)<sup>18</sup>. When mouse is deeply sedated and no longer responsive to paw pinch, perform median thoracotomy followed by bronchoalveolar lavage and right ventricular perfusion with phosphate buffer saline, or PBS<sup>19-20</sup>.

NOTE: The Urethane solution includes heparin at 100 units/mL for anticoagulation<sup>21</sup>.

1.1.2. Remove the lungs *en bloc* and then separate into single lobes<sup>19</sup>. Place each lobe into a 60-mm sterile Petri dish.

1.1.3. Transfer the lung-containing 60-mm Petri dish to a 100-mm Petri dish. Put these two Petri dishes in the liquid nitrogen container together in order to float the Petri dishes on the surface of the liquid nitrogen and the tissue will be snap frozen to allow precise slicing. Using sterile technique, slice each lobe into 1 mm slices with a multi-knife.

NOTE: Do not let the tissue contact the liquid nitrogen directly. It is ok if some liquid nitrogen flowing in the 100-mm Petri dish. However, avoid the liquid nitrogen flowing in the 60-mm Petri dish.

1.1.4. Rinse slices extensively with PBS containing sodium nitroprusside (SNP) at 1 µg/mL for 1 h.

NOTE: Prepare 1 µg/mL SNP before use, no more than 24 h, sterilize via a 0.45 µm filter and protect from light.

#### 1.2. Decellularization

1.2.1. Transfer the slices to a 15-mL tube that contains 5 mL of decellularization (decell) solution. Roll tube at 37 °C overnight with a shaker at 8 rpm.

NOTE: Wear a mask when preparing and using decell solution. Open CHAPS ((3-[(3-

CholamLdopropyl)dimethylammonio]-1-propanesulfonate) in chemical hood.

1.2.2. Extensively rinse the scaffold slices as follows. Transfer slices to a 50 mL conical tube containing 35 mL of 1x PBS; shake by hand or vortex for 30 s; transfer slices to a new 50 mL conical tube containing 35 mL of 1x PBS; shake by hand or vortex for 30 s again.

1.2.2.1. Repeat 10 times or until there are few to no bubbles evident in the rinsate. If many bubbles remain, cease shaking for ~10 s, repeat last step, until there are few to no bubbles.

1.2.3. Place the scaffold slices in 2 mL of benzonase buffer (**Table 1**) for set of mouse lungs at room temperature (RT) for 10 min. Then, transfer the slices to 5 mL of benzonase (50 U/mL), rolling at 37 °C for 1 h by a shaker.

NOTE: Warm the benzonase buffer to 37 °C before use.

### 1.3. Sterilization and Storage

1.3.1. Rinse the scaffold slices with 25 mL of sterilization solution in a 50-mL conical tube placed on a shaker (250 rpm) for 1 h at 37 °C to make them sterile. Repeat this step for a total of two rinses.

1.3.2. Store the prepared scaffold slices in sterilization solution at 4 °C.

## 2. Human Lung Tissue Slice Decellularization Protocol

### 2.1. Preparation of slices

2.1.1. Visually examine the lung tissue (by eye) to ensure that the tissue is anatomically intact and does not appear to be grossly infected. Grossly disrupted tissues will be torn, ruptured and/or clotted; grossly infected tissues will have pus emanating from the airways and airspaces.

**CAUTION!** Fresh human tissue is potentially infectious biomaterial and should be handled with standard precautions.

2.1.2. Place the lung tissue in a 60-mm sterile Petri dish. Transfer this 60-mm Petri dish to a 100-mm Petri dish. Put these two Petri dishes in the liquid nitrogen container together in order to float the Petri dishes on the surface of the liquid nitrogen and the tissue will be snap frozen to allow precise slicing.

NOTE: The ideal volume of the lung tissue is from (Length 1 cm × Width 1 cm × High 1 cm) to (Length 3.5 cm × Width 3 cm × High 2 cm). Scale up or down as needed for the particular application.

2.1.3. Using sterile technique, cut the tissue into 2 mm slices with a multi-knife. Rinse

extensively with PBS containing SNP at 1 µg/mL for 1 h.

2.1.4. Transfer the slices to a 50-mL tube containing 15 to 25 mL of decellularization solution, maintain at 37 °C, and roll the tube overnight with a shaker at 8 rpm.

2.1.5. Extensively rinse the scaffold slices with PBS until there are few to no bubbles left. Place the scaffold slices in the benzonase buffer (10 mL) at RT (20-25 °C) for 10 min. Transfer the scaffold slices in a new 50 mL tube containing new benzonase buffer nuclease (15 to 25 mL) with benzonase at 90 U/mL to treat the scaffold slices with for 1 h at 37 °C.

NOTE: Warm the benzonase buffer to 37 °C before use.

## **2.2. Sterilization and Storage**

2.2.1. Rinse the scaffold slices with 25 mL of sterilization solution in a 50-mL conical tube placed on a shaker (250 rpm) for 1 h at 37 °C to make them sterile. Repeat this step once for a total of two rinses. Store the prepared scaffold slices in sterilization solution at 4 °C until use.

## **3. Preparation of the Scaffold and Seeding of Cells**

NOTE: The below protocol is optimized for fibroblast cell lines. Users should determine their own conditions.

3.1. Immediately prior to culture rinse slices with PBS for 5 min twice. Place slices in a tissue cultured treated, Poly-L-Lysine coated 6-well plate.

NOTE: The slices can roll when removed from PBS. Use forceps to stretch to the corner of the slices to make them even.

3.2. Incubate at 37 °C for at least 10 min to allow adherence to the bottom of the plate but do NOT dry the slices. Use 3 slices per well. This step is critical.

3.3. Suspend  $10^4$ ,  $10^5$  or  $10^6$  fibroblasts in 50 µL of fibroblast medium (**Table 1**). Drizzle cells over the slice. Place the seeded slices in the 37 °C incubator with 5% CO<sub>2</sub> for 30-60 min. Add 1.85 mL of additional medium to the well and return to the incubator.

NOTE: Before fibroblast seeding in the scaffold, we use regular cell culture flasks to culture the fibroblast. The cells of 80% cell confluence are ready to be used as materials to do scaffold cell culture. Use 0.5 mL 0.25% Trypsin-EDTA to dissociate cells from cell culture flasks, use a hemocytometer to count cells and centrifuge at 188 x g for 5 min, then resuspend in cell culture medium, based on different cell number to add medium by different volume. The final cell concentration will be  $10^4$ ,  $10^5$  or  $10^6$  in 50 µL.

3.4. Partially (500 µL) change medium after 24 h and then every 48 h thereafter for a

maximum culture period of 14 days.

NOTE: At this point, scaffolds can be fixed in 4% paraformaldehyde and paraffin embedded for histologic evaluation, stored in TRIzol reagent for RNA isolation, snap frozen for future protein extraction, or used for other purposes as determined by the user.

#### **4. Digestion of the Scaffold**

4.1. Lyophilize decellularized scaffold. Lyse the lyophilized tissue with lysis buffer at 55 °C overnight to obtain the lung ECM solution (about 10 mg dry decellularized human lung will be lysed by 0.5 mL lysis buffer).

4.2. Centrifuge the lung ECM solution at 3615 x g for 8 min, collect supernatant, add 0.5 mL of lysis buffer to re-lyse the pellet again at 55 °C overnight.

NOTE: Fibrotic tissue can be difficult to digest and may form chunks of insoluble material.

4.3. Mix the ECM solution from 4.1 and 4.2, and dialyze to remove the lysis buffer against 4 L of ddH<sub>2</sub>O. Repeat three times for a total of four dialysis sessions. Perform the first for at least 1 h, the second overnight, and the third and fourth for at least 1 h.

4.4. Filter sterilize the purified ECM solution by a 0.45 µm filter apparatus. Analyze protein concentration of the ECM solution using a protein assay dye reagent concentrate kit (See the **Materials Table**).

#### **5. Stimulation of Cells with ECM Solution**

NOTE: This method is optimized for peripheral blood mononuclear cells (PBMCs), users should determine optimal concentration for their specific need.

5.1. Make the ECM working solution: Mix ECM solution with FBS, penicillin/streptomycin, 5x DMEM and cell culture grade water to make the ECM working solution.

NOTE: Prepare 5x Dulbecco's Modified Eagle Medium (DMEM) by DMEM powder. Dilute 5x DMEM to 1x DMEM in ECM working solution; ECM working solution: 20 µg/mL ECM protein + 10% FBS + 1% penicillin/streptomycin + 1x DMEM.

5.2. Use solution of polysucrose and sodium diatrizoate to isolate peripheral blood mononuclear cells (PBMCs) by Ficoll technique<sup>22-24</sup>. Seed 1x10<sup>6</sup> PBMCs in a 12-well-plate. The composition of the cell culture medium is (10% FBS + 1% penicillin/streptomycin + 1x DMEM).

5.3. Treat PBMCs with ECM solution by adding (50 µL of ECM working solution + 450 µL of 1x DMEM) for the final concentration of 1 µg/mL and 500 µL of ECM working solution for the final concentration of 10 µg/mL. The final medium volume is 1 mL per well. Culture for up to 14 days.

**CAUTION!** Human PBMCs are a potentially infectious biomaterial and should be handled with standard precautions.

#### **REPRESENTATIVE RESULTS:**

The initial steps of this protocol are designed to process intact lung tissue such as that shown in **Figure 1A** to yield an acellular culture substrate such as that shown in **Figure 1B**. This goal requires achieving a balance between complete removal of cellular material and the maintenance of tissue architecture and composition. Thus, evaluation of the scaffold should take these outcomes into account. In terms of decellularization, several approaches can be used to determine the amount of cellular material remaining in the decellularized scaffold. Qualitatively, fluorescence based detection of nuclear material can be performed using 4',6-Diamidino-2-Phenylindole (DAPI) staining followed by fluorescence microscopy. Unlike native tissue, which shows abundant DAPI signal (**Figure 2A**), the decellularized lung will display a complete absence of DAPI staining (**Figure 2A**). Additional evaluation of decellularization can be performed using quantitative DNA fluorescence based assays (**Figure 2B**) which will reveal a nearly complete absence of DNA in the decellularized tissue. Removal of cellular proteins such as beta-actin and major histocompatibility class II (MHCII) can be confirmed by Western blot, where relative to intact lung, the decellularized lung will reveal a complete absence of signal (**Figure 2C**).

When examined histologically, Hematoxylin and Eosin (H&E) or trichrome staining and light microscopy reveals complete absence of cellular material but preserved alveolar architecture (**Figures 3A** and **3B** left). Further, evaluation by scanning electron microscopy also reveals an absence of cells but intact alveolar spaces (**Figure 3A** and **3B** right)<sup>13</sup>. The protocol presented here has not been optimized for studies of the airway or blood vessels, whose tubular structure is quite different from the topography of the parenchyma. It also should be noted here that the decellularization procedure is a delicate balance between removal of cells and preservation of tissue. For example, the high pH and detergent based conditions can degrade tissues leading to a shredded appearing scaffold and an inability to detect intact structural proteins<sup>25,26</sup>. In contrast, appropriately decellularized tissues will retain collagens and proteoglycans, though glycosaminoglycans may be reduced relative to native tissues (**Figure 4**).

Because cell: matrix interactions are likely to be quite abnormal in the setting of pulmonary fibrosis, we refined this technique for the study of cell: matrix interactions in the context of the diseased lung ECM. Here as shown in **Figures 5A** and **5B**, the slicing technique can be used to decellularize fibrotic tissues removed from experimentally manipulated laboratory animals (**Figure 5A**) or from explanted fibrotic human lungs (**Figure 5B**). Decellularization is achievable (**Figures 5A-5C**) and histologic evaluation reveals the disrupted architecture and ECM accumulation that are the defining features of fibrosis (**Figures 5A-5C**). Mechanical testing at the low deformation range such as would be encountered during normal breathing demonstrates that relative to scaffolds prepared from normal lung tissue, which display tensile properties similar to those reported for intact native lung (**Figure 5D**), scaffolds prepared from fibrotic lungs produce tensile responses that are nearly an order of magnitude greater (**Figure 5D**). When viewed in combination, the above results show that decellularization of mammalian lung slices



produces an acellular matrix scaffold retaining many of the gross anatomic, microstructural, biochemical, and biophysical properties of native lung tissue.

Once the scaffolds have been prepared and characterized, they can be used in any number of applications. Many of these involve the transfer of a cell population directly onto the scaffold (**Figure 6**). While the decellularization method was initially developed as the basis for the *ex vivo* generation of functional organs, the procedure described herein is more suitable for mechanistic studies of cellular interactions with the isolated ECM. Thus, the method requires consideration of the cells to be seeded into this system, the culture conditions to be employed, and the readouts to be used to determine responses. For the most part, the quantification can be presented as cells per high powered field or cells per unit lung tissue. Because engraftment can be heterogeneous (**Figure 7**) we have developed a semi-quantitative method to quantify cellular coverage in a two-dimensional system. This objective scoring standard, which is termed the “repopulation index,” involves manual determination of cellular content for the entire tissue slice. Since this initial report, we have applied this methodology to study the signaling pathways through which fibroblasts interact with the normal lung cells<sup>13</sup> (**Figure 8**), as well as to the study of immune cell phenotypes in the setting of scleroderma<sup>5</sup> (**Figure 9**) both via direct contact with the intact scaffold and with stimulation with the digestible components of the ECM, and macrophage fibroblast crosstalk in the clinical setting of Idiopathic Pulmonary Fibrosis<sup>16</sup> (**Figure 10**).

#### FIGURE LEGENDS:

**Figure 1: Murine lung scaffolds.** Mouse lung slices preceding (**A**) and immediately following decellularization (**B**).

**Figure 2: Determination of cellular absence.** **A.** DAPI stains confirm presence or absence of genetic material in the ECM. DAPI staining of (top) native mouse lung slices and (bottom) decellularized mouse lung slices. Note the absence of DAPI signal in the bottom panel. **B.** Fluorometric comparison of digested native lung tissue and decellularized lung slices. Error bars show Standard Error of Mean (SEM); \*\*\*\*p<0.0005 by t-test. **C.** Western blot detection of (top) Major histocompatibility complex II (top, MHCII) and beta-actin ( $\beta$ -actin, bottom) in native and decellularized lung slices. Figure reprinted with permission from American Journal of Physiology (AJP)-Lung<sup>13</sup>.

**Figure 3: Assessing matrix integrity.** **A.** Native mouse lung slices analyzed by H&E staining (left) and scanning electron microscopy (right). **B.** Decellularized mouse lung slices evaluated identically reveal intact alveolar structure and the absence of cells at the microstructural and ultrastructural level. Panels **A** and **B** are reprinted with permission from AJP-Lung<sup>13</sup>.

**Figure 4: Immunodetection of ECM proteins in native vs. decellularized murine lung slices.** Top row shows the appearance of selected ECM proteins in the native lung. Bottom row shows the same proteins detected via immunofluorescence in the decellularized murine lung. Fluorescence images are counterstained with DAPI and panels are reprinted with permission from AJP-Lung<sup>13</sup>.

**Figure 5: The slice method is amenable for use on fibrotic lungs.** **A.** H&E staining (left) and DAPI staining (right) on decellularized mouse lung slices prepared from (top) normal mouse lungs and (bottom) the lungs of mice in which fibrosis had been generated by the intratracheal instillation of bleomycin. **B.** Top: Gross appearance of decellularized lung slices prepared from (left) control lung and (right) fibrotic human lung (in this case, Scleroderma lung). Bottom: DAPI staining of native and decellularized SSc-ILD lung. **C.** Comparison of H&E staining (left) and scanning electron microscopy (right) of a control lung scaffold (CLS, top) and fibrotic lung (in this case scleroderma, SLS, bottom) reveals disrupted tissue architecture and ECM accumulation in the fibrotic scaffolds. **D.** Tensile testing performed via Instron 5848 reveals that relative to scaffolds prepared from control lung tissue (red), scaffolds prepared from explanted scleroderma lungs demonstrate excessive stiffness as measured by Young's modulus. Panel (A) reprinted with permission from JBC<sup>17</sup>. Panels (B-D) reprinted with permission from Arthritis and Rheumatology<sup>5</sup>. Error bars show SEM; \*\*p<0.01 by t-test.

**Figure 6: Seeding of cells.** **A.** Scaffolds are allowed to adhere to the bottom of the culture well for 10 min. **B.** Cells suspended in a small amount of medium are drizzled over the scaffolds and placed in the incubator for 30-60 min. **C.** Additional media is added to the well. Figure is reprinted with permission from AJP-Lung<sup>13</sup>.

**Figure 7: Scoring the cellular coverage of the scaffold.** Cellular coverage of the scaffold can range from nearly absent to nearly complete. This image presents a semiquantitative scoring system developed by our group to assist with interpretation of engraftment efficiency.

**Figure 8: Analysis of engraftment.** **A.** Schematic of experiment in which fibroblasts are inoculated directly into the scaffold. **B-D.** Fibroblast seeded mouse lung scaffolds examined in the transverse plane show altered cell density following seeding of cells. A time dependent increases in cellular coverage in the two-dimensional axis can be seen by H&E staining (B), low power scanning electron microscopy or SEM (C) and high-power SEM (D). **E.** Varying the initial concentration of cells alters engraftment at early and intermediate but not later timepoints. Error bars show SEM. **F.** Examination of the scaffolds in the sagittal plane demonstrates in addition to two-dimensional coverage, seeded cells display the ability to invade into the scaffold for three-dimensional engraftment as well. Figure is reprinted with permission from AJP-Lung<sup>13</sup>

**Figure 9: Immune cell phenotypes in the setting of scleroderma.** **A.** Schematic of experiment in which peripheral blood mononuclear cells (PBMCS) can be seeded directly onto the scaffolds to evaluate the interaction of circulating immune cells with the decellularized lung ECM. **B.** Representative immunofluorescence of control and SSc-ILD PBMCs (B) seeded into control lung scaffolds (CLS) and Scleroderma lung scaffold (SLS). Cells are stained for CD45 (green), Pro-Collagen Iα1 (red) and counterstained with DAPI (blue). **C.** Schematic demonstrating that scaffolds can also be digested to generate an ECM containing solution that can be used to stimulate cultured cells. **D.** Representative immunostaining of PBMCS obtained from a control donor grown in the presence of digested control lung scaffolds (CLS) or SLS. As above, cells are stained for CD45 (green), Pro-Collagen Iα1 (red) and counterstained with DAPI (blue). Scale bars, 50 μm. Images reprinted with permission from Arthritis and Rheumatology<sup>5</sup>.

**Figure 10: Monocyte/Macrophage fibroblast crosstalk in the clinical setting of Idiopathic Pulmonary Fibrosis.** **A.** Schematic demonstrating that scaffolds can also be used to study cellular crosstalk in the mammalian lung. Here, human lung scaffolds are placed on a Transwell insert and seeded with cells of interest (in this case human fibroblasts). A second population is placed on the bottom of the plate (in this case human monocytes selected based on their expression of the scavenger receptor CD206). The effect of this intervention on fibroblast engraftment is ascertained. **B.** Low power images of fibroblast seeded human lung scaffolds grown in the presence of (left to right) no primary monocytes, CD206<sup>lo</sup> primary human monocytes, and CD206<sup>hi</sup> primary human monocytes obtained from patients with IPF. Scale bars, 200  $\mu$ m. Images reprinted with permission from Science Translational Medicine<sup>16</sup>.

#### **DISCUSSION:**

The application of bioengineering based strategies to studies of tissue remodeling and fibrosis has the potential to greatly advance the understanding of cellular responses to the normal and diseased extracellular matrix. The method reported herein represents several potential advances over the use of classical cell culture strategies. For example, the plastic and glass culture plates used for the studies of mesenchymal cell biology possess a stiffness exceeding that of fibrotic tissue by several orders of magnitude, which introduces a nonphysiologic tensile property into the modeling system. Plastic and glass are also artificially bioinert and typically require coating with purified ECM, which does not entirely recapitulate the complexity of the ECM present in the intact lung. Furthermore, these modeling systems are also largely two dimensional and lack the topographic cues that cells would encounter in an intact organ. However, in order to ensure optimal performance of the model, attention to the following aspects is required.

One extremely important part of this protocol is the rinsing steps that occur following overnight rolling decellularization. Retention of the alkaline detergent will harshen the conditions such that tissue architecture is no longer intact. The protein components of the ECM may be compromised as well. Because the decellularization solution is detergent based, it forms bubbles during the rinsing steps. Once the bubbles are no longer visible during rinsing, the solution is likely removed. However, we generally recommend rinsing at least once more in order to be fully certain that no residual solution is retained.

Another critical part of this protocol is the sterilization step. Because primary tissues are derived from living organisms that are colonized with commensurate organisms, all of the starting material used in this protocol should be considered contaminated and in need of sterilization. This requirement is especially true of the human lungs. Grossly infected appearing lung tissue should not be used in this protocol as it will be nearly impossible to achieve adequate sterilization even with the stringent steps outlined herein. Similarly, if at any step during the processing or culturing evidence of bacterial or fungal contamination is observed (usually visible colonies floating on the surface of the culture medium), samples should be discarded and the protocol re-initiated.

Another important aspect is the stabilization of the decellularized scaffold during the culture

process. We have found that unanchored matrices rise to the surface of the culture medium. This complication results in the curling and contraction of the scaffold into a rounded structure which impedes cell growth while simultaneously creating an uninterpretable tissue mass. While it is generally quite easy to extend the decellularized slice derived from nonfibrotic lung, extension and adherence of the fibrotic lung may require the formation of footlike processes to exert traction on the culture plate. During this adhesion step it is imperative that the scaffold not dry out. If the decellularized matrices appear prone to desiccation, addition of a small amount of sterile PBS may be employed to maintain adequate moisture prior to cell seeding.

One limitation of the procedure is the uneven engraftment that is sometimes observed. This heterogeneity might result from regional differences in ECM composition or structure that are native to the intact tissue or are induced during the decellularization process. It is not clear whether engraftment and expansion of seeded cells are due to initial differences in adherence, survival, or proliferation of the seeded cells. Another issue is that the seeding of a single cell population might not accurately reflect how cells respond when native and inflammatory cell populations are present. In fact, our work in this area demonstrates that seeded cells behave differently depending on the concomitant presence of structural cells such as lung epithelia and inflammatory cells such as macrophages. The model also omits important aspects of lung physiology such as inspiratory/expiratory cycle, blood flow, gas exchange, and the presence of epithelial lining fluid containing surfactant and other bioactive molecules. Nevertheless, the methods reported herein hold great potential to advance the study of cell: matrix interactions in a variety of translational settings and experimental contexts.

#### ACKNOWLEDGMENTS:

This study was supported by grants from the Scleroderma Foundation (H.S.) and the N.I.H (R01HL109233, R01HL125850, both to E.L.H.).

#### DISCLOSURES:

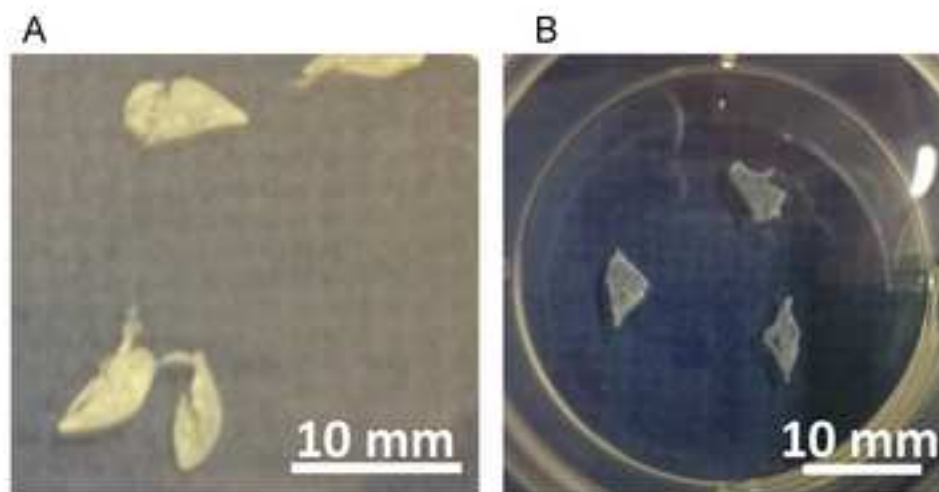
The authors have no disclosures relevant to this manuscript.

#### REFERENCES:

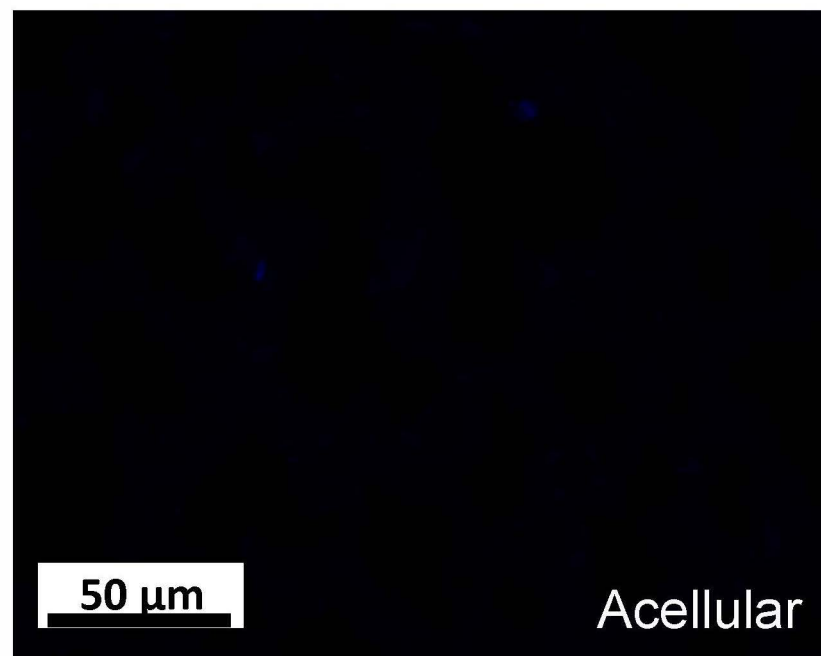
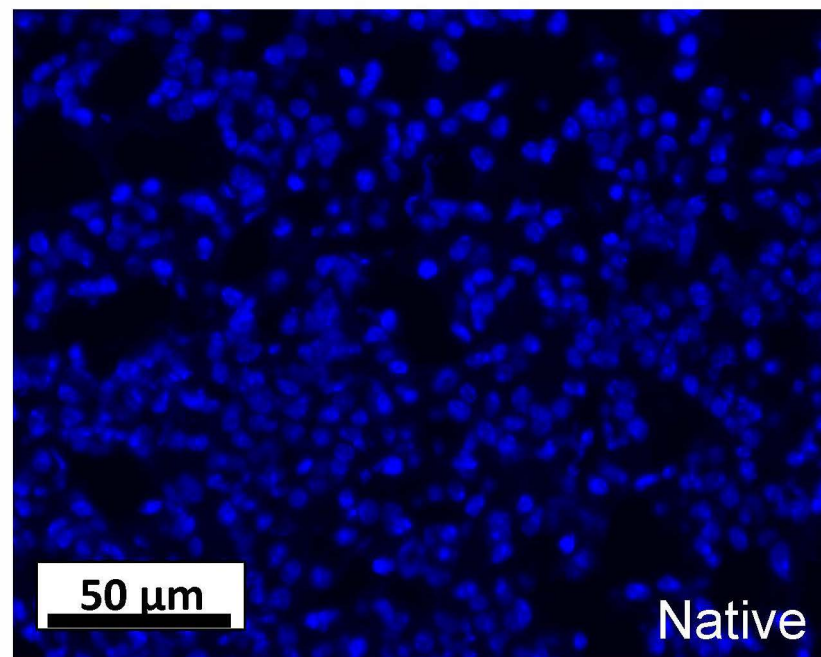
1. Rosenberg, H.F., Masterson J.C., Furuta, G.T. Eosinophils, probiotics, and the microbiome. *Journal of Leukocyte Biology* (5), 881, DOI:10.1189/jlb.3RI0416-202R (2016)
2. Duan, M., Hibbs, M.L, Chen, W. The contributions of lung macrophage and monocyte heterogeneity to influenza pathogenesis. *Immunology and Cell Biology* (95), 225, doi:10.1038/icb.2016.97 (2017)
3. Fujita, Y., Kosaka, N., Araya, J., Kuwano, K., Ochiya, T., Extracellular vesicles in lung microenvironment and pathogenesis. *Trends in Molecular Medicine* (9), 533, doi:10.1016/j.molmed.2015.07.004 (2015)
4. Petersen T. H. *et al.* Tissue-engineered lungs for in vivo implantation. *Science*. **329**, 538-541, doi:10.1126/science.1189345 (2010).
5. Sun, H. *et al.* Netrin-1 regulates fibrocyte accumulation in the decellularized fibrotic sclerodermatous lung microenvironment and in bleomycin-induced pulmonary fibrosis. *Arthritis & Rheumatism*. **68**, 1251-1261, doi:10.1002/art.39575 (2016).

6. Hynes R.O., Naba, A. Overview of the Matrisome—An Inventory of Extracellular Matrix Constituents and Functions. *Cold Spring Harbor Perspectives Biology* (4), 1, doi:10.1101/cshperspect.a004903 (2012)
7. Wynn T.A. Integrating mechanisms of pulmonary fibrosis. *Journal of Experimental Medicine* (7), 1339, doi:10.1084/jem.20110551 (2011).
8. Geiser, T. Idiopathic pulmonary fibrosis-a disorder of alveolar wound repair? *Swiss Medical Weekly* (29-30), 405, doi:2003/29/smw-09986 (2003).
9. Selman, M., King, T.E., Pardo, A. Idiopathic pulmonary fibrosis: prevailing and evolving hypotheses about its pathogenesis and implications for therapy. *Ann Intern Med* (2), 136 (2001).
10. Moore, M. W. & Herzog, E. L. Regulation and relevance of myofibroblast responses in idiopathic pulmonary fibrosis. *Current Pathobiology Reports*. **1**, 199-208, doi:10.1007/s40139-013-0017-8 (2013).
11. Nelson, C. M. & Bissell, M. J. Of extracellular matrix, scaffolds, and signaling: Tissue architecture regulates development, homeostasis, and cancer. *Annual Review Of Cell & Developmental Biology* **22**, 287-309, doi:10.1146/annurev.cellbio.22.010305.104315 (2006)
12. Song, J. J. & Ott, H. C. Organ engineering based on decellularized matrix scaffolds. *Trends in Molecular Medicine*. **17**, 424-432, doi:10.1016/j.molmed.2011.03.005 (2011).
13. Sun, H. *et al.* Fibroblast engraftment in the decellularized mouse lung occurs via a  $\beta$ 1-integrin-dependent, fak-dependent pathway that is mediated by erk and opposed by akt. *American Journal of Physiology-Lung Cell and Molecular Physiology*. **306**, L463-L475, doi:10.1152/ajplung.00100 (2014).
14. Calle, E.A. *et al.* Fate of distal lung epithelium cultured in a decellularized lung extracellular matrix. *Tissue Engineering Part A*. **21**, 1916-1928, doi:10.1089/ten.tea.2014.0511 (2015).
15. Parker, M. W. *et al.* Fibrotic extracellular matrix activates a profibrotic positive feedback loop. *The Journal of Clinical Investigation*. **124**, 1622-1635, doi:10.1172/JCI71386 (2014).
16. Zhou, Y. *et al.* Chitinase 3-like 1 suppresses injury and promotes fibroproliferative responses in mammalian lung fibrosis. *Science Translational Medicine*. **6**, 240ra276-240ra276, doi:10.1126/scitranslmed.3007096 (2014).
17. Southern, B. D. *et al.* Tschumperlin DJ. Matrix-driven myosin ii mediates the pro-fibrotic fibroblast phenotype. *Journal of Biological Chemistry*. **291**, 6083-6095, doi:10.1074/jbc.M115.712380 (2016).
18. Field KJ, White WJ, Lang CM. Anaesthetic effects of chloral hydrate, pentobarbitone and urethane in adult male rats. *Lab Animals*. **27**, 258-269 (1993).
19. Lancelin, W., & Guerrero Plata, A. Isolation of Mouse Lung Dendritic cells. *Journal of Visualized Experiments*. **57**, 3563, doi:10.3791/3563 (2011).
20. Han, H., & Ziegler, S.F. Bronchoalveolar Lavage and Lung Tissue Digestion. *Bio-protocol*, **3** (16), e859 (2013).
21. Calle EA, Petersen TH, Niklason LE. Procedure for lung engineering. *Journal of Visualized Experiments*. 2651-2651 (2011).
22. Amos, D.B., and Pool, P. HLA typing. *Manual of Clinical Immunology*. **797** (1976).
23. Winchester, R.J., Ross, G. Methods for enumerating lymphocyte populations *Manual of Clinical Immunology*. **64** (1976).
24. Thorsby, E., Bratlie, A. A rapid method for preparation of pure lymphocyte suspensions. *Histocompatibility Testing*. **665** (1970).

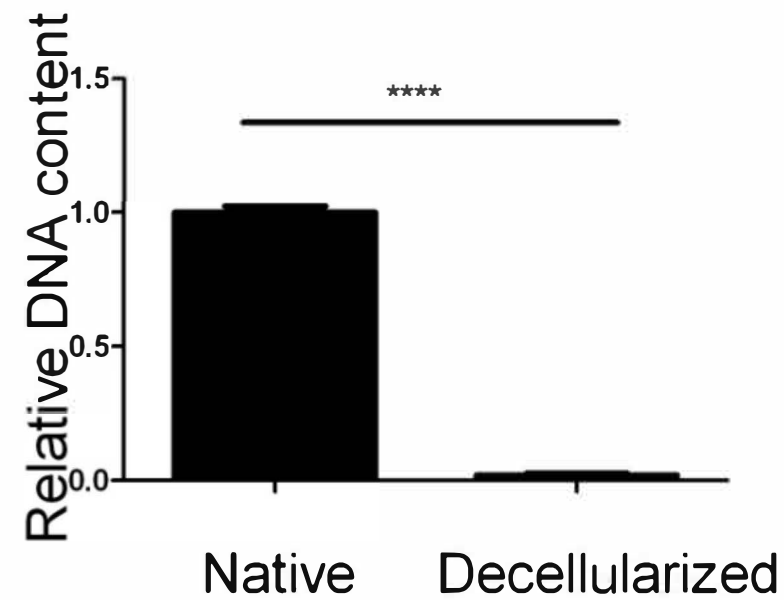
- 529 25. Calle, E.A. *et al.* Targeted proteomics effectively quantifies differences between native  
530 lung and detergent-decellularized lung extracellular matrices. *Acta Biomaterialia*. **46**, 91,  
531 doi:10.1016/j.actbio.2016.09.043 (2016).
- 532 26. Wallis, J.M. *et al.* Comparative Assessment of Detergent-Based Protocols for Mouse Lung  
533 De-Cellularization and Re-Cellularization. *Tissue Engineering Part C*. **6**, 420,  
534 doi:10.1089/ten.tec.2011.0567 (2012)



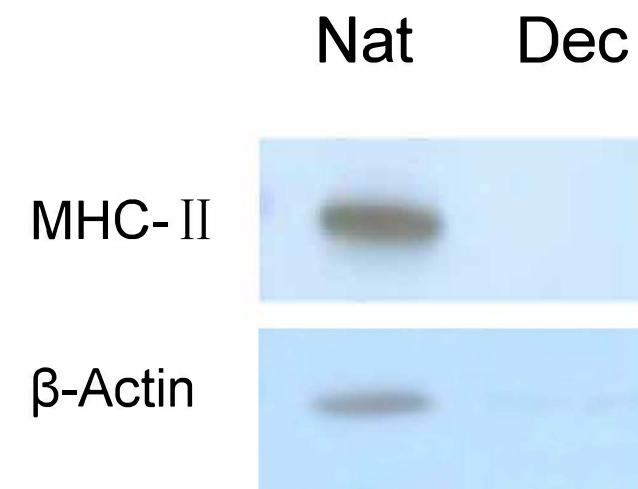
A



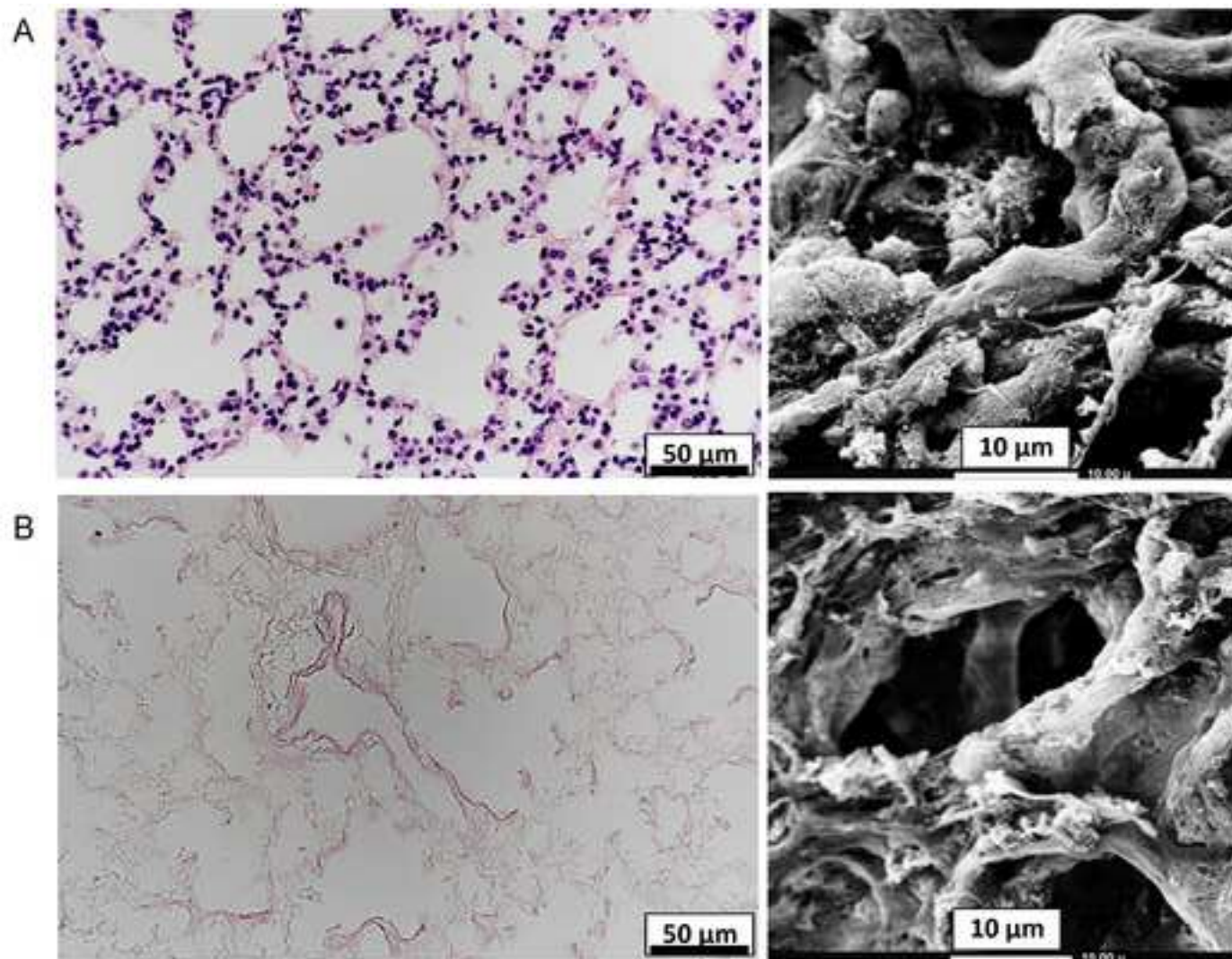
B



C







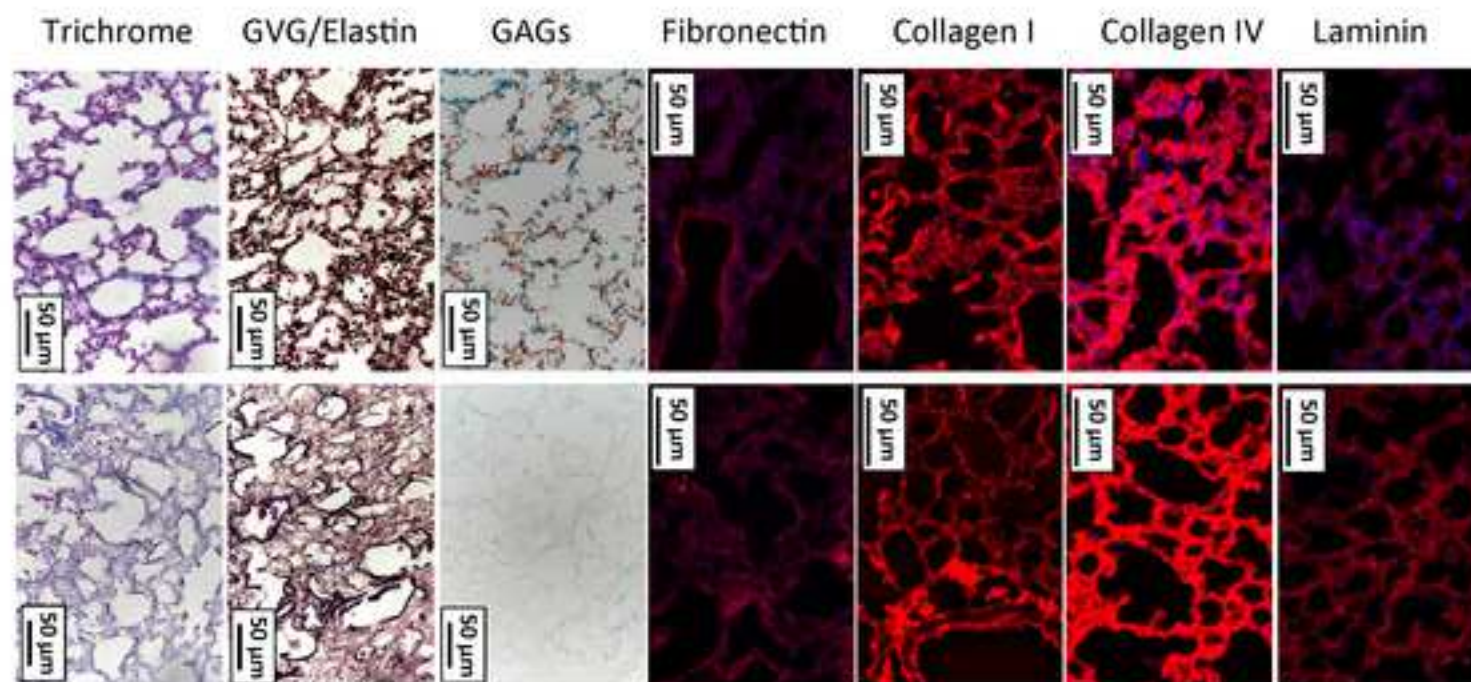
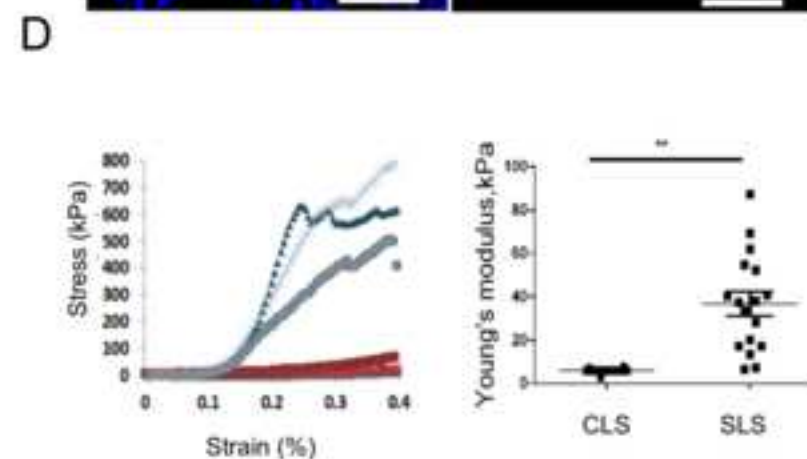
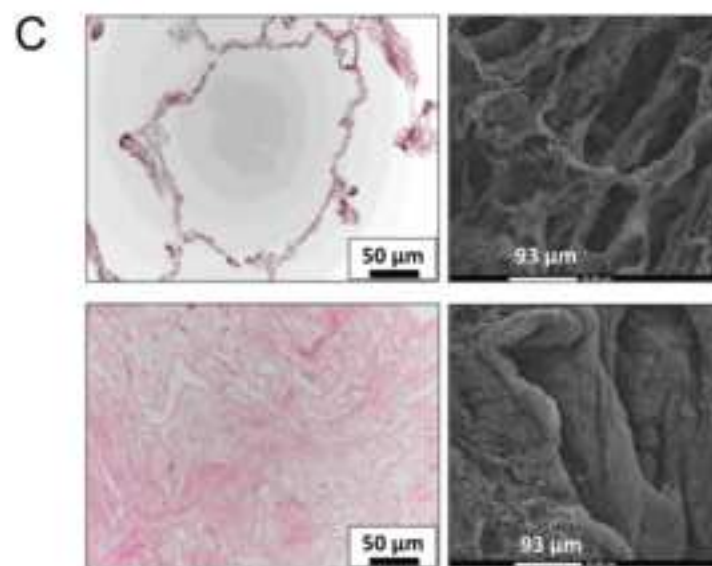
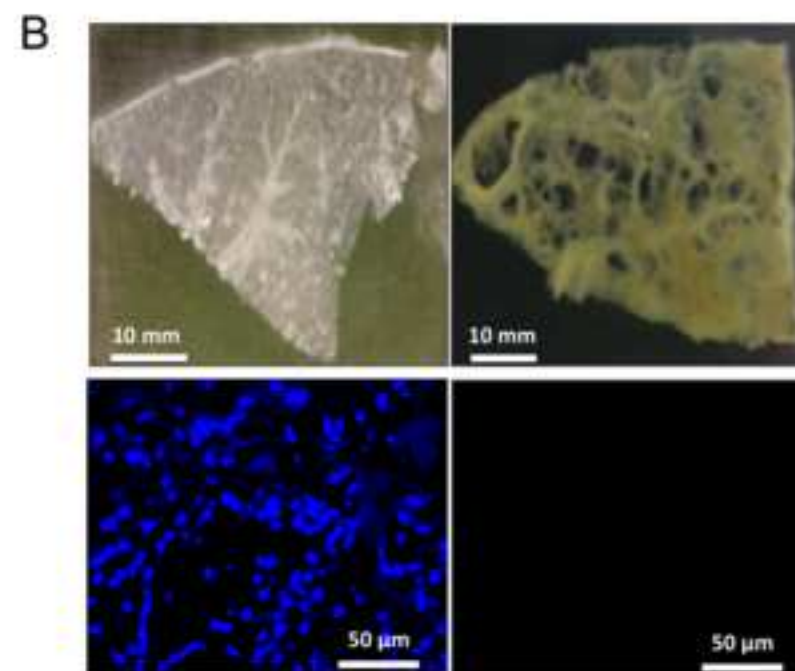
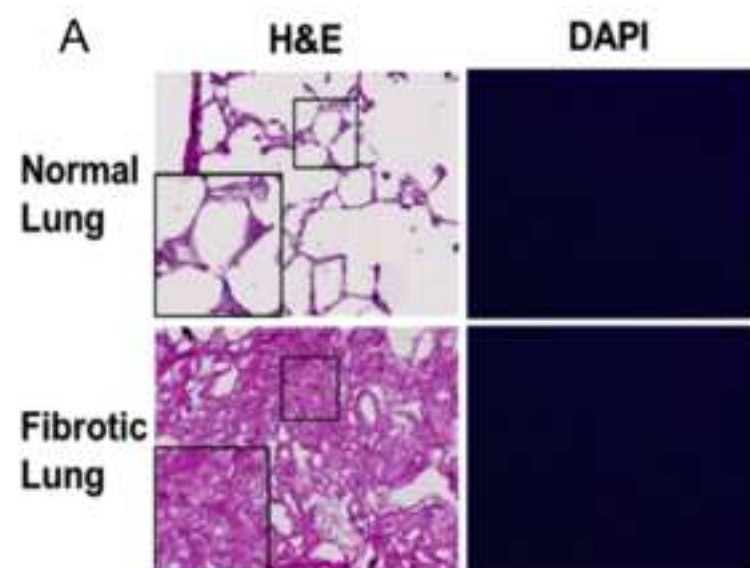
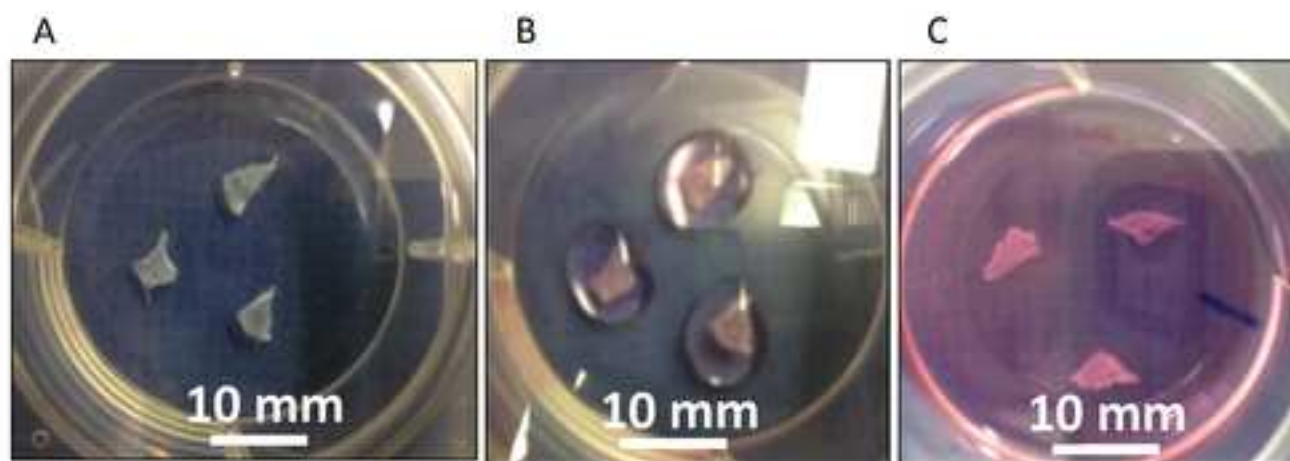


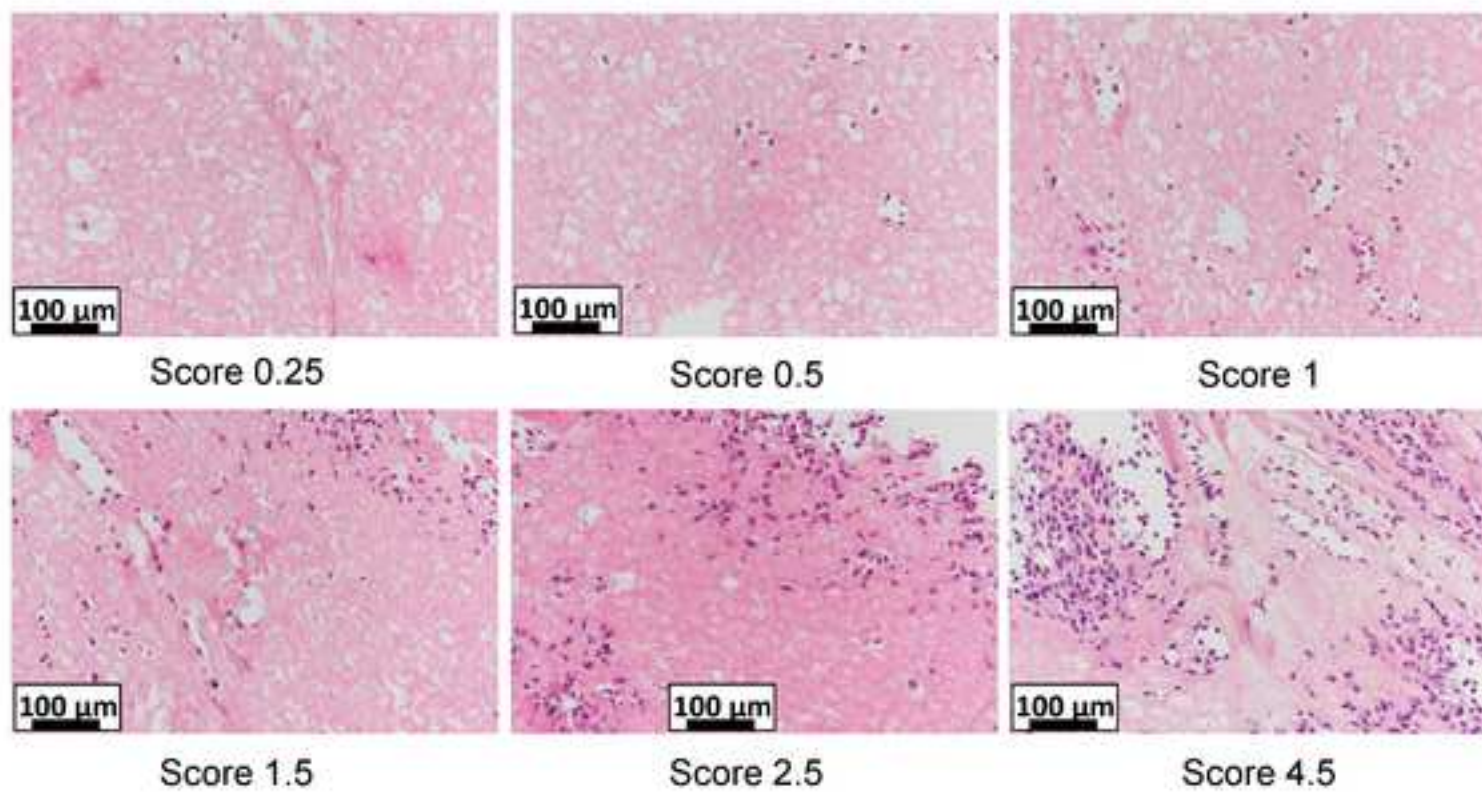
Figure 5

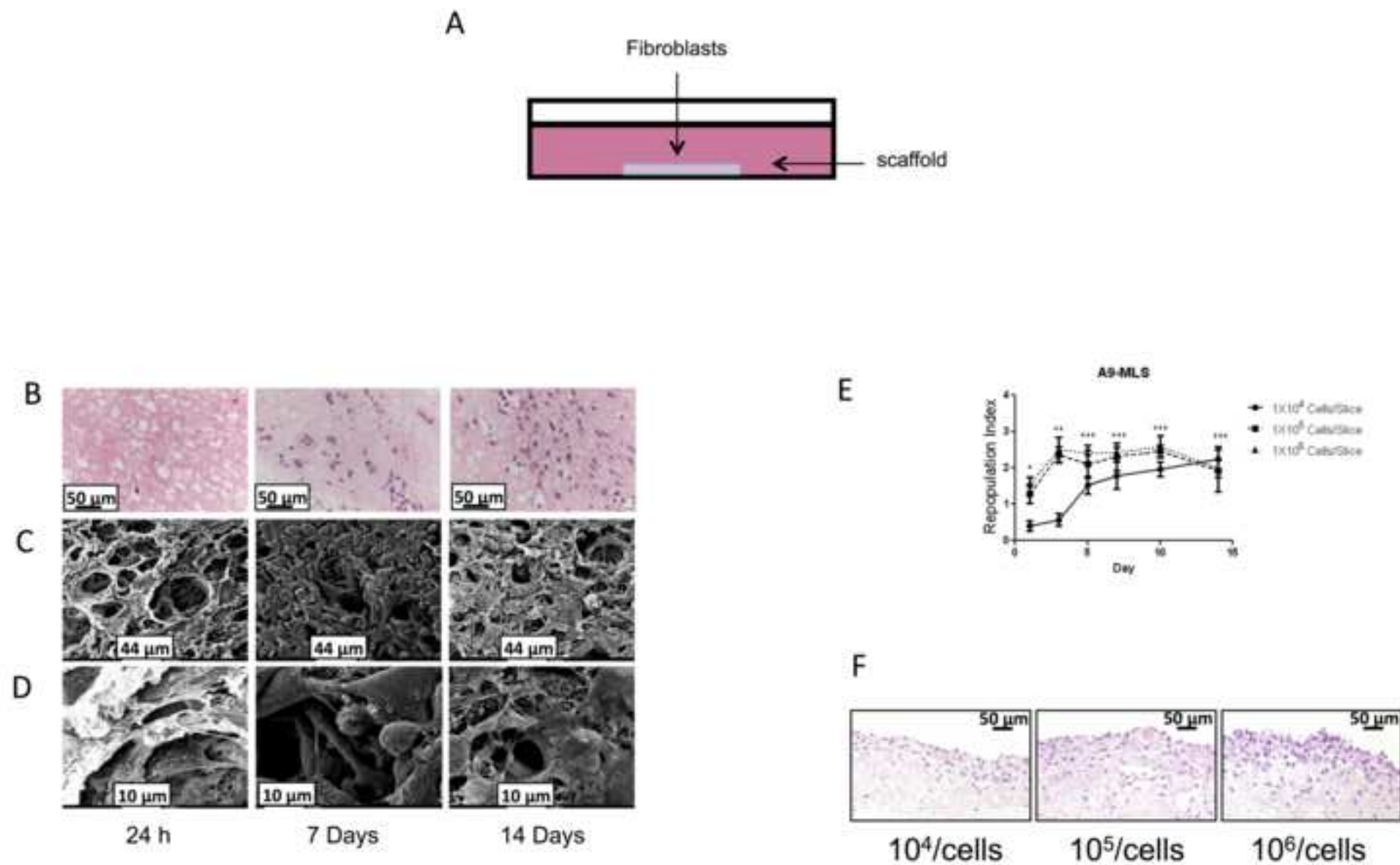
[Click here to download Figure Figure5.tif](#)

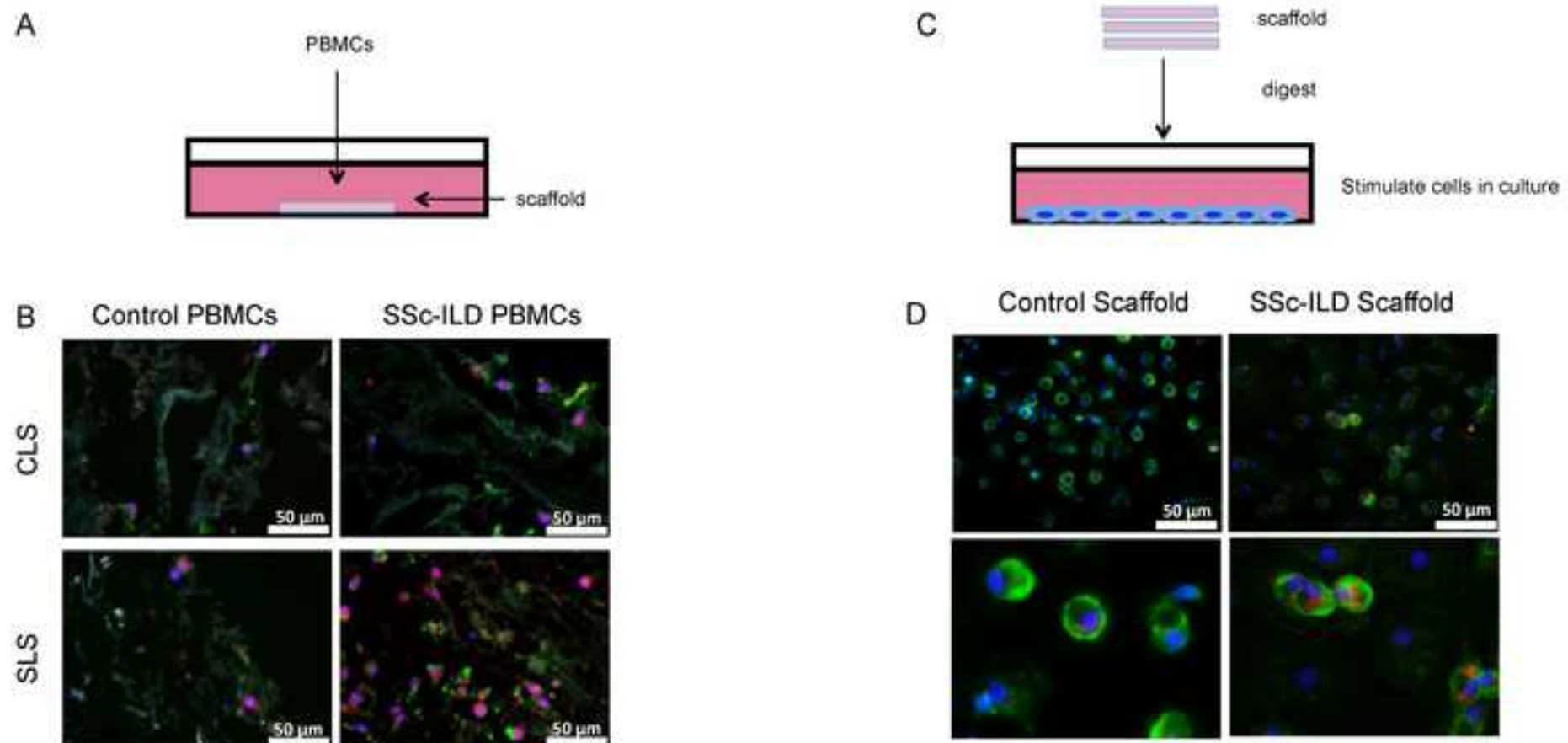


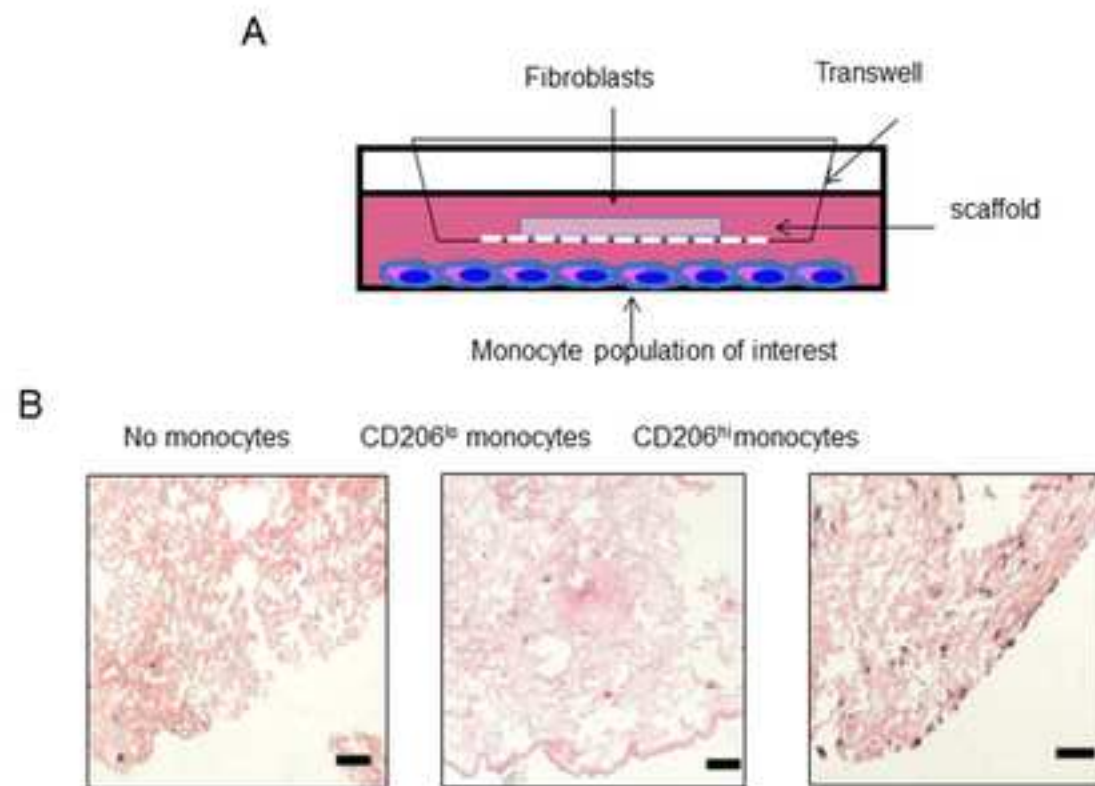














Name of Material/ Equipment	Company
Heparin	Sigma- Aldrich
Urethane	Sigma-Aldrich
sodium nitroprusside (SNP)	Sigma
EDTA	American Bioanalytical
BSA	Sigma
benzonase nuclease	Sigma-Aldrich
Poly-L-Lysine	Becton Dickinson, Two Oak Park, Bedford, MA
<i>Decellularization Solution</i>	
CHAPS	Sigma-Aldrich
NaCl	J.T.Baker
EDTA	Amerixan Bioanalytical
10XPBS	Amerixan Bioanalytical
<i>Benzonase Buffer</i>	
Tris-HCl	Amerixan Bioanalytical
BSA	Sigma-Aldrich
MgCl2	J.T.Baker
Benzonase Nuclease	Sigma-Aldrich
<i>fibroblast medium</i>	
DMEM	Gibco
FBS	Sigma
penicillin/streptomycin	Gibco
Anti-anti	Gibco
Dialysis Cassettes	Thermo

*ECM working solution*

ECM protein	
FBS	Sigma
penicillin/streptomycin	Gibco
DMEM	Gibco
cell culture level water	

*sterilization solution PBS*

Gentamicin	Sigma-Aldrich
Penicillin/streptomycin	Gibco
Anti-anti	Gibco

*Lysis Buffer*

Tris-HCl	Amerixan Bioanalytical
KCl	J.T.Baker
EDTA	Amerixan Bioanalytical
NP-40	Fluka BioChemika
Tween-20	Sigma
dd H <sub>2</sub> O	
Proteinase K	Sigma

BioRad protein assay dye  
reagent concentrate Kit

BioRad

Histopaque

Sigma

Beckman Coulter DU 530

Beckman Institute

*Multiknife*

Blade	VWR
Super Glue Gel	Krazy Glue

Catalog Number	Comments/Description
H4784	250U/kg
U2500-500G	180mg/ml in 1XPBS
71778-25g	'BS before use, no more than 24 hours, sterile by 0.45 µm filter
AB00502-01000	PH 8.0, 0.5M
A9647-100G	0.1mg/ml
	(St Louis, MO) (90U/ml) for 1 hour, 37 °C
356515	
C3023	8 nM
3624-01	1 M
AB00502-01000-0.5M	25mM
AB11072-04000	
AB14043-01000	PH 8.0, 1M
A9647-100G	0.1mg/ml
2444-01- 1mM	PH 8.0
E1014	endonuclease used to remove remnant DNA from matrix
11965092	
F4135-500ml	10%
15140-122	1%
15240-062	1%
87723, 3.5K	

F4135-500ml	optimized for PBMCs
15140-122	20 ug/ml
12100-046	10%
	1%
G-1397-10ml	2%
15140-122	10%
15240-062	2%, optional
AB14043-01000	50mM
3040-01	50 mM
AB00502-01000-0.5M	2.5 mM
74385	0.45%
P-5927	0.45%
	20 ug/ml, added before use
500-0006	
10771-100ml	
	Urbana, IL
55411-050	
KG585	

r, protect from light



# RightsLink®

[Home](#)
[Create Account](#)
[Help](#)


**Title:** Fibroblast engraftment in the decellularized mouse lung occurs via a  $\beta$ 1-integrin-dependent, FAK-dependent pathway that is mediated by ERK and opposed by AKT

**Author:** Huanxing Sun, Elizabeth Calle, Xiaosong Chen, Aditi Mathur, Yangyang Zhu, Julio Mendez, Liping Zhao, Laura Niklason, Xueyan Peng, Hong Peng, Erica L. Herzog

**Publication:** Am J Physiol-Lung, Cellular, and Molecular Physiology

**Publisher:** The American Physiological Society

**Date:** Mar 15, 2014

Copyright © 2014, Copyright © 2014 the American Physiological Society

[LOGIN](#)

If you're a [copyright.com user](#), you can login to RightsLink using your copyright.com credentials. Already a [RightsLink user](#) or want to [learn more?](#)

## Quick Price Estimate

**If you are an original author on the requested material, no permission is necessary.**

**I would like to...** ?

**I am a/an...** ?

**The portion I would like to use is...** ?

**My format is...** ?

**I will be translating...** ?

**World Rights...** ?

**My currency is...**

**Quick Price**

Click Quick Price

[QUICK PRICE](#)
[CONTINUE](#)

### No content delivery.

This service provides permission for reuse only. Once licensed, you may utilize the appropriate portion of the APS content according to the terms of your license.

Reuse of APS material for any APS publication including *Comprehensive Physiology* (an online work jointly published by APS and Wiley-Blackwell) is granted without the need to request permission.

Contact [publisher](#) with permission requests for reuse of material from APS books and Comprehensive Physiology.

For information or requests for commercial Reprints of Journal articles, please contact [APS](#).

Copyright © 2017 [Copyright Clearance Center, Inc.](#) All Rights Reserved. [Privacy statement](#). [Terms and Conditions](#).  
Comments? We would like to hear from you. E-mail us at [customercare@copyright.com](mailto:customercare@copyright.com)

64C-1844846

[Learn more](#) about  
the complexity of SpA

You have full text access to this content

# Arthritis & Rheumatology

© American College of Rheumatology



Edited By: Richard J. Bucala, MD, PhD

Online ISSN: 2326-5205

Associated Title(s): [Arthritis Care & Research \(/doi/10.1002/\(ISSN\)2151-4658/home\)](http://doi/10.1002/(ISSN)2151-4658/home)

## Permissions

**\*PLEASE NOTE: If the links highlighted here do not take you to those web sites, please copy and paste address in your browser.**

### Permission to reproduce Wiley journal Content:

Requests to reproduce material from John Wiley & Sons publications are being handled through the RightsLink® automated permissions service.

**Simply follow the steps below to obtain permission via the Rightslink® system:**

- Locate the article you wish to reproduce on Wiley Online Library (<http://onlinelibrary.wiley.com> (<http://onlinelibrary.wiley.com/>))



- Click on the “Request Permissions” link on the content you wish to use. This link can be found next to the book, on article abstracts, tables of contents or by clicking the green “Information” icon.
- Follow the online instructions and select your requirements from the drop down options and click on ‘quick price’ to get a quote
- Create a RightsLink® account to complete your transaction (and pay, where applicable)
- Read and accept our Terms & Conditions and download your license
- For any technical queries please contact [customercare@copyright.com](mailto:customercare@copyright.com) (<mailto:customercare@copyright.com>).
- For further information and to view a Rightslink® demo please visit [www.wiley.com](http://www.wiley.com) (<http://www.wiley.com/>) and select Rights & Permissions.

**AUTHORS** - If you wish to reuse your own article (or an amended version of it) in a new publication of which you are the author, editor or co-editor, prior permission is not required (with the usual acknowledgements). However, a formal grant of license can be downloaded free of charge from RightsLink by selecting “Author of this Wiley article” as your requestor type.

Individual academic authors who are wishing to reuse up to 3 figures or up to 400 words from this journal to republish in a new journal article they are writing should select **University/Academic** as the requestor type. They will then be able to download a free permission license.

Either of the above who are publishing a new journal article or book chapter with an **STM Signatory Publisher** may also select that requestor type and the STM Signatory publisher’s name from the resulting drop-down list in RightsLink. This list is regularly updated. The requestor is required to complete the republication details, including the publisher name, during the request process. They will then be able to download a free permissions license.

## Photocopying

Teaching institutions with a current paid subscription to the journal may make multiple copies for teaching purposes without charge, provided such copies are not resold or copied. In all other cases, permission should be obtained from a reproduction rights organisation (see below) or directly from RightsLink®.

## **Copyright Licensing Agency**

Institutions based in the UK with a valid photocopying and/or digital license with the Copyright Licensing Agency may copy excerpts from Wiley books and journals under the terms of their license. For further information go to CLA (<http://www.cla.co.uk/>).

## **Copyright Clearance Center**

Institutions based in the US with a valid photocopying and/or digital license with the Copyright Clearance Center may copy excerpts from Wiley books and journals under the terms of their license, please go to CCC (<http://www.copyright.com/>).

**Other Territories:** Please contact your local reproduction rights organisation.

For further information please visit www.wiley.com (<http://www.wiley.com/>) and select Rights & Permissions.

**If you have any questions about the permitted uses of a specific article, please contact us at permissions@wiley.com (<mailto:permissions@wiley.com>).**

## Copyright Permission Policy

These guidelines apply to the reuse of articles, figures, charts and photos in the *Journal of Biological Chemistry*, *Molecular & Cellular Proteomics* and the *Journal of Lipid Research*.

### For authors reusing their own material:

Authors need **NOT** contact the journal to obtain rights to reuse their own material. They are automatically granted permission to do the following:

- Reuse the article in print collections of their own writing.
- Present a work orally in its entirety.
- Use an article in a thesis and/or dissertation.
- Reproduce an article for use in the author's courses. (If the author is employed by an academic institution, that institution also may reproduce the article for teaching purposes.)
- Reuse a figure, photo and/or table in future commercial and noncommercial works.
- Post a copy of the paper in PDF that you submitted via BenchPress.
- Link to the journal site containing the final edited PDFs created by the publisher.
- Authors who published their papers under the "Author's Choice" option may post the final edited PDFs created by the publisher to their own/departmental/university Web sites immediately upon publication. All other authors may do so 12 months after publication.

EXCEPTION: If authors select the Author's Choice publishing option:

- The final version of the manuscript will be covered under the Creative Commons Attribution license (CC BY), the most accommodating of licenses offered. [Click here for details.](#)
- The final version of the manuscript will be released immediately on the publisher's website and PubMed Central.

Please note that authors must include the following citation when using material that appeared in an ASBMB journal:

"This research was originally published in Journal Name. Author(s). Title. *Journal Name*. Year; Vol:pp-pp. © the American Society for Biochemistry and Molecular Biology."

### For other parties using material for noncommercial use:

Other parties are welcome to copy, distribute, transmit and adapt the work — at no cost and without permission — for noncommercial use as long as they attribute the work to the original source using the citation above.

Examples of noncommercial use include:

- Reproducing a figure for educational purposes, such as schoolwork or lecture presentations, with attribution.
- Appending a reprinted article to a Ph.D. dissertation, with attribution.

### For other parties using material for commercial use:

Navigate to the article of interest and click the "Request Permissions" button on the middle navigation bar. (See diagram at right.) It will walk you through the steps for obtaining permission for reuse.

Examples of commercial use by parties other than authors include:

- Reproducing a figure in a book published by a commercial publisher.
- Reproducing a figure in a journal article published by a commercial publisher.

### Personal and Institutional Repositories:

- The "paper-in-press", ie, manuscript version of the article can be deposited at any time. The final, copyedited version of the article may not be deposited until 12 months after publication, unless the article is an Author's Choice article. Author's Choice articles may be deposited upon publication.
- An institution may deposit only articles published by individuals employed by or students attending the institution. The normal procedure is for the author to make the deposit.
- A link back to the article on the journal website should be provided.

Updated December 14, 2016

Advertisement

Advertiser

**ISOLAT OptiP**  
(60% iodixan)

Scores of 5 and applied sheets av



brought t

**COSM**  
Inspiration

- **Services**
  - Email this article to a friend
  - Alert me when this article is cited
  - Alert me if a correction is posted
  - Alert me when eletters are published
  - Similar articles in this journal
  - Similar articles in PubMed
  - Download to citation manager
  - Request Permissions

- + **Responses**
- + **Google Scholar**
- + **PubMed**
- + **Social Bookmarking**

Sunday, March 26, 2017 at 6:24:22 PM Eastern Daylight Time

**Subject:** RE: reprint permission**Date:** Monday, December 12, 2016 at 9:23:19 AM Eastern Standard Time**From:** Elizabeth Sandler**To:** Sun, Huanxing[http://stm.sciencemag.org/content/6/240/240ra76.abstract?\\_ga=1.16451574.1189506464.1464871022](http://stm.sciencemag.org/content/6/240/240ra76.abstract?_ga=1.16451574.1189506464.1464871022)

Dear Huanxing:

Thank you very much for your request. AAAS currently permits the use of figures/tables from Science, Science Signaling, Science Translational Medicine, Science Robotics and Science Immunology articles by authors without the need for further permission from AAAS but subject to the following conditions:

1. After publication of a AAAS journal manuscript, the author may reuse, modify or adapt the figures and tables from that manuscript in any works the author writes, including print works and electronic works. The author may not permit others to reproduce their figures and tables in works the author has not written. In these cases, publishers/parties interested in the figures or tables should be instructed to contact AAAS directly for permission.

2. Credit must be given to the first appearance of the material in the appropriate issue of Science, Science Signaling, or Science Translational Medicine. Here is the credit line that must be printed along with the AAAS material: "From [Full Reference Citation]. Reprinted with permission from AAAS." If your intended manuscript will be published Open Access, please note, we do not currently permit our content to be distributed under an OA license. You can still include the figure in your work but you will have to run our copyright credit line along-side or just under the figure.

If you have any questions regarding this policy, please let me know.

Kind regards,

Liz

(Ms.) Elizabeth Sandler  
Rights & Permissions  
Science/AAAS  
1200 New York Ave. NW  
Washington, DC 20005  
Tel: + 1-202-326-6765  
esandler@aaas.org

---

**From:** Sun, Huanxing [<mailto:huanxing.sun@yale.edu>]**Sent:** Sunday, December 11, 2016 10:06 PM**To:** Cindy Eyler**Subject:** reprint permission

Dear Cindy,

How are you?

I am the co-first author of "DOI: 10.1126/scitranslmed.3007096".

May I get the reprint permission of Figure 3 E, F & G? I tried to get the form but couldn't open the website. Could you mind help me?

Thank you for your nice help!

Best wishes.

Huanxing

**Editorial comments:**

1 . Some additional details are required. Please see the comments in the attached manuscript.

*Answer: Yes, we checked the comments and modified the manuscript.*

2. Please include the multi-knife in the Materials Table.

*Answer: Yes, the multi-knife is included the Materials Table.*

3. Figures need revision. Please provide Figures with at least 300 dpi. Please define all scale bars and error bars (SD, SEM) in the figure legends as well.

*Answer: Yes, we provided figures with 300 dpi and defined SEM. There is no SD in figure legends.*

Figure 1/6: Please provide scale bars.

*Answer: Yes, scale bars are provided.*

Figure 2: Please increase the size of the font on the scale bars. The 50 um is not clear. Please provide more clear scale bars and increase the font of the text above them:  
Figure 3, 4, 5

*Answer: Yes, we increased the size of the font on the scale bars and provided more clear scale bars.*

Figure 6: Why is there an A panel? Are there panels B and C?

*Answer: We added B and C.*

4. Please define all abbreviations in the text.

*Answer: Yes, all abbreviations are defined.*

5. Please highlight 2.75 pages of the protocol text to be feature in the video.

*Answer: Yes, the protocol text is highlighted.*

6. Please bold all of the Figure references in the manuscript text.

*Answer: Yes, all of the Figure references are bolded.*

7. In the figure legends, please provide the superscripted reference number in addition to the following: Figure reprinted with permission from XXX.

*Answer: Yes, we added the reference numbers.*

8. Please abbreviate all journal titles. Please bold the volume number.

*Answer: Yes, we abbreviated all journal titles and bolded the volume numbers.*

# Yale University

**Huanxing Sun PhD**

Associate Research Scientist  
Department of Internal Medicine  
300 Cedar Street – TAC S-441C  
New Haven, CT 06520-8057  
Telephone (203) 785-3627  
Fax (203) 785-3826  
E-mail: [huansing.sun@yale.edu](mailto:huansing.sun@yale.edu)

February 1, 2018

To the editor and reviewers,

Thank you very much for the careful review of our submission, “Use of decellularized mammalian lung tissues to study cell: matrix interactions.” We have had the opportunity to revise the manuscript according to the comments and feel that the resulting document is much clearer. We have submitted a “clean” version of the manuscript. For each of review, a point by point response is provided below.

Sincerely,

*Huanxing Sun*

Huanxing Sun, Ph.D.  
Associate Research Scientist  
YALE-ILD Center of Excellence  
Department of Internal Medicine  
Yale University, School of Medicine

Point by Point Rebuttal:

Editorial comments

Comment 1: Manuscript has been modified. Please read it carefully and revise if necessary. Please find enclosed the top copy. Please do not change the current format/font.

*Response: Necessary revisions have been made without changing the original format.*

Comment 2: Before removing the lungs in step 1.1.2., is there any other step(s)? Was the animal anesthetized? Please describe all the steps clearly or refer to appropriate references or protocols.

*Response: This information is provided at line 100:*

*Treat mouse (C57/BL6, 6 to 8 weeks old, both male and female mice were used) with a lethal i.p. (intraperitoneal) injection of Urethane or other anesthetic (1.5 g/kg)<sup>18</sup>. When mouse is deeply sedated and no longer responsive to paw pinch perform median thoracotomy followed by bronchoalveolar lavage and right ventricular perfusion with phosphate buffer saline, or PBS<sup>19-20</sup>.*

Comment 3: Is there any step(s) for imaging? Please refer to appropriate references for performing imaging steps.

*Response: The appropriate reference is cited in paper. Access to the imaging steps can be found in reference 13, lines: 505-508. Immunofluorescent imaging steps are available in this source article on AJP web site.*



Comment 4: Figure 5, panel A: Please provide the scale bars for the figure.

*Response: This request is not applicable and addressed in the previous Jove review.*

Comment 5: Figure 8, panel D: Please use “24 h” instead of “24 hours”.

*Response: Revision to Figure 8, panel D completed.*

Comment 6: Figures 7,9 and 10: Editor added a title for the figure legends, please check and change if necessary.

*Response: The added figure legends are accurate in describing the subsequent text.*

