

Journal of Visualized Experiments

Precision Milling of Carbon Nanotube Forests using Low Pressure Scanning Electron Microscopy --Manuscript Draft--

Manuscript Number:	JoVE55149R2
Full Title:	Precision Milling of Carbon Nanotube Forests using Low Pressure Scanning Electron Microscopy
Article Type:	Invited Methods Article - JoVE Produced Video
Keywords:	Carbon nanotube; scanning electron microscope; Nanofabrication; radiolysis; nanomaterial; milling
Manuscript Classifications:	92.23.4: chemistry (general); 92.23.5: materials (general); 92.27.3: carbon nanotubes (synthesis and properties); 93.35.17: electron microscopes; 93.37.48: manufacturing processes; 93.37.50: materials forming; 93.37.52: materials manufacturing; 93.37.82: tools
Corresponding Author:	Matthew Maschmann, Ph.D. University of Missouri Columbia Columbia, MO UNITED STATES
Corresponding Author Secondary Information:	
Corresponding Author E-Mail:	maschmannm@missouri.edu
Corresponding Author's Institution:	University of Missouri Columbia
Corresponding Author's Secondary Institution:	
First Author:	Josef Brown
First Author Secondary Information:	
Other Authors:	Josef Brown
	Benjamin Davis
Order of Authors Secondary Information:	
Abstract:	A nanoscale fabrication technique appropriate for milling carbon nanotube (CNT) forests is described. The technique utilizes an environmental scanning electron microscope (ESEM) operating with a low pressure water vapor ambient. In this technique, a portion of the electron beam interacts with the water vapor in the vicinity of the CNT sample, dissociating the water molecules into hydroxyl radicals and other species by radiolysis. The remainder of the electron beam interacts with the CNT forest sample, making it susceptible to oxidation from the chemical products of radiolysis. This technique may be used to trim a selected region of an individual CNT, or it may be used to remove hundreds of cubic microns of material by adjusting ESEM parameters. The machining resolution is similar to that of the imaging resolution of the ESEM itself. The technique produces only small quantities of carbon residue along the boundaries of the cutting zone, with minimal effect on the native structural morphology of the CNT forest.
Author Comments:	
Additional Information:	
Question	Response
If this article needs to be "in-press" by a certain date, please indicate the date below and explain in your cover letter.	

TITLE:

Precision Milling of Carbon Nanotube Forests using Low Pressure Scanning Electron Microscopy

AUTHORS:

Brown, Josef

Department of Mechanical & Aerospace Engineering
University of Missouri
Columbia, Missouri, USA
brownjosef@missouri.edu

Davis, Benjamin F.

Department of Mechanical & Aerospace Engineering
University of Missouri
Columbia, Missouri, USA
bfd895@mail.missouri.edu

Maschmann, Matthew R.

Department of Mechanical & Aerospace Engineering
University of Missouri
Columbia, Missouri, USA
maschmannm@missouri.edu

CORRESPONDING AUTHOR:

Matthew R. Maschmann
maschmannm@missouri.edu
573-882-2310

KEYWORDS:

Carbon nanotube, scanning electron microscope, nanofabrication, radiolysis, nanomaterial, milling

SHORT ABSTRACT:

Low pressure scanning electron microscopy in a water vapor ambient is used to machine nanoscale to microscale features in carbon nanotube forests.

LONG ABSTRACT:

A nanoscale fabrication technique appropriate for milling carbon nanotube (CNT) forests is described. The technique utilizes an environmental scanning electron microscope (ESEM) operating with a low pressure water vapor ambient. In this technique, a portion of the electron beam interacts with the water vapor in the vicinity of the CNT sample, dissociating the water molecules into hydroxyl radicals and other species by radiolysis. The remainder of the electron beam interacts with the CNT forest sample, making it susceptible to oxidation from the chemical products of radiolysis. This technique may be used to trim a selected region of an individual CNT, or it may be used to remove hundreds of cubic microns of material by adjusting

ESEM parameters. The machining resolution is similar to the imaging resolution of the ESEM itself. The technique produces only small quantities of carbon residue along the boundaries of the cutting zone, with minimal effect on the native structural morphology of the CNT forest.

INTRODUCTION:

Carbon nanotubes (CNTs) and graphene are carbon-based nanomaterials that have attracted significant attention because of their superior strength, durability, thermal, and electrical properties. Precision machining of carbon nanomaterials has become an emerging topic of research and offers the potential to engineer and manipulate these materials towards a variety of engineering applications. Machining CNTs and graphene requires nanoscale spatial precision to first locate a nanoscale area of interest and then to selectively remove only the material within the area of interest. As an example, consider the machining of vertically oriented CNT forests (also known as CNT arrays). The cross section of CNT forests may be precisely defined by lithographic patterning of catalyst films. The top surface of the vertically oriented forests, however, are frequently poorly ordered with non-uniform height. For surface-sensitive applications such as thermal interface materials, the irregular surface may impede optimal surface contact and reduce device performance. Precision trimming of the irregular surface to create a uniform flat surface could potentially offer better, more repeatable performance by maximizing the available contact area.

Precision machining techniques for nanomaterials frequently do not resemble conventional macroscale mechanical machining technologies such as drilling, milling, and polishing by means of hardened tooling. To date, techniques using energetic beams have been most successful at site-selective milling of carbon nanomaterials. These techniques include laser, electron beam, and focused ion beam (FIB) irradiation. Of these, laser machining techniques provide the most rapid material removal rate^{1,2}; however, the spot size of laser systems is on the order of many microns and is too large to isolate nanometer-scale entities such as a single carbon nanotube segment within a densely populated forest. By contrast, electron and ion beam systems produce a beam that may be focused to a spot that is several nanometers or less in diameter.

FIB systems are specifically designed for nanoscale milling and deposition of materials. These systems utilize an energetic beam of gaseous metal ions (typically gallium) to sputter material from a selected area. FIB milling of CNTs is achievable, but often with unintended byproducts including gallium and carbon redeposition in surrounding regions of the forest^{3,4}. When the technique is used for CNT forests, the redeposited material masks and/or alters the morphology of selected milling region, altering the native appearance and behavior of the CNT forest. The gallium may also implant within the CNT, providing electronic doping. Such consequences often make FIB-based milling prohibitive for CNT forests.

Transmission electron microscopes (TEMs) utilize a finely focused beam of electrons to probe the internal structure of materials. Acceleration voltages for TEM operation typically range from 80-300 kV. Because the knock-on energy of CNTs is 86.4 keV⁵, the electron energy produced by TEM is sufficient to directly remove atoms from the CNT lattice and induce highly localized milling. The technique mills CNTs with potentially sub-nanometer precision⁵⁻⁷; however, the

process is very slow – often requiring minutes to mill a single CNT. Importantly, TEM-based milling approaches require CNTs to first be removed from a growth substrate and dispersed onto a TEM grid for processing. As a result, TEM-based methods are generally not compatible with CNT forest milling in which the CNTs must remain on a rigid substrate.

Milling of CNT forests by scanning electron microscopes (SEMs) has also received attention. In contrast to TEM-based techniques, SEM instruments are typically unable to accelerate electrons with sufficient energy to impart the knock-on energy required to directly remove carbon atoms. Rather, SEM-based techniques utilize an electron beam in the presence of a low-pressure gaseous oxidizer. The electron beam selectively damages the CNT lattice and may dissociate the gaseous ambient into more reactive species such as H₂O₂ and the hydroxyl radical. Water vapor and oxygen are the most commonly reported gases to achieve selective area etching. Because the SEM-based techniques rely on a multiple-step chemical process, numerous processing variables may influence the milling rate and precision of the process. It has been previously observed that increasing acceleration voltage and beam current directly increase the milling rate because of an increased energy flux, as expected¹¹. The effect of chamber pressure is less obvious. A pressure that is too low suffers from a deficiency of the oxidizing agent, decreasing the milling rate. Further, an over-abundance of gaseous species scatters the electron beam and decreases the electron flux in the milling region, also decreasing the material removal rate.

To estimate the carbon removal rate, an approach similar to that used by Lassiter and Rack¹² was employed, whereby electrons interact with precursor molecules near the surface to generate reactive species that etch the substrate surface. From this model, the etch rate is estimated as

$$Etch\ Rate \approx \frac{N_A}{Z} x A_\sigma \Gamma_e$$

where N_A is the surface concentration of the etchant species, Z is the surface concentration of available reaction sites, x is a stoichiometry factor relating the volatile etching products generated relative to the reactants, A_σ represents the probability of generating the desired etching species from an electron-water vapor collision, and Γ_e is the electron flux at the surface. The factors of x and A_σ are assumed to be unity, while Z is assumed to be nearly constant and significantly larger than N_A. Further details may be found in our previous work.¹¹

In this article, a procedure is explored that uses low-pressure water vapor within a SEM to mill regions ranging from individual CNTs to large volume (tens of cubic micrometers) material removal. Here we demonstrate the technique used to mill CNT forests using an ESEM by the use of reduced area rectangles, horizontal line scans, and software-controlled rastering of the electron beam. Additional software and hardware are required for pattern generation, as outlined in the Materials Table. Emphasis is placed on removing relatively large (100's of cubic microns) material volume from a CNT forest, so the following processing conditions are relatively aggressive.

When handling the sample and the sample stub, it is important to wear disposable nitrile gloves. This will prevent oils from being transferred to the stub or sample and consequently deteriorating the effectiveness of the pumps.

PROTOCOL:

1. Preparation of CNT Forest Sample for Milling

1.1) CNT Synthesis

1.1.1) Deposit 10 nm of aluminum oxide (alumina) on a thermally oxidized silicon wafer using atomic layer deposition¹³ or other physical vapor deposition methods.

1.1.2) Deposit 1 nm of iron on the alumina support layer by sputtering¹⁴ or other physical vapor deposition method.

1.1.3) Synthesize CNTs using an established process, such as thermal chemical vapor deposition¹⁵.

1.1.3.1) Heat a 20 mm diameter tube furnace to 750 °C in 400 standard cubic centimeters (sccm) of flowing helium and 100 sccm hydrogen. Introduce 100 sccm ethylene as a hydrocarbon feedstock gas for a growth rate of approximately 50 µm/min.

1.2) SEM Preparation

1.2.1) Apply carbon tape to a standard 1/2" diameter SEM stub. If tilting the stage is required, overlap the region of the CNT forest sample to be milled over the edge of the stub. If software-controlled electron beam rastering will be used in the milling procedure, secure the CNT sample to an electron beam lithography mount in a similar manner.

1.2.2) If milling the CNT cross section, secure the stub to a 45° stub holder with a set screw.

1.2.3) Vent the ESEM by selecting the "Vent" icon from the ESEM control software.

1.2.4) Open the ESEM stage door, and secure the stub to the SEM stage with a set screw.

1.2.5) Close the SEM chamber and select "High Vacuum" in the ESEM control software.

1.2.6) While the ESEM chamber is pumping, select the electron beam parameters of 5 kV and spot size of 3.0 using the Beam Control tab within the control software.

1.2.7) Select the secondary electron detector by selecting Detectors | ETD(SE) in the ESEM control software.

1.2.8) Select the "Beam On" icon in the control software. The beam can be activated only once the chamber vacuum is less than 10⁻⁴ Torr. Use manual SEM focus control knobs to focus the sample.

1.2.9) Tilt the sample to 45° using manual tilt stage control knob or by inputting 45° in the “Tilt” field in the “Coordinates” tab of the ESEM software. Focus on the highest sample. Link the focal distance to the working distance by selecting Stage | Link Z to FWD in the ESEM software menu. Input 7 mm into the “Z” field in the “Coordinates” tab within the control software.

1.2.10) Adjust focus, stigmation, brightness and contrast using the manual control knobs to resolve a well-focused image.

1.3) Beam Adjustment in High Vacuum Mode

1.3.1) Locate a region for milling using navigation controls. Double click within the SEM image view or by manually turning the x and y control knobs of the SEM stage control to navigate.

1.3.2) Navigate to an adjacent location approximately 100 μm away from the milling region.

1.3.3) Consult Figure 1 to estimate the material removal rate of the CNT forest as a function of pressure, acceleration voltage, dwell time per pixel, and beam current.

1.3.4) Adjust the acceleration voltage to 30 kV and spot size to 5.0 using the ESEM control software. Adjust image focus, brightness, and contrast using the ESEM control knobs. For nanometer-scale milling of individual or few CNTs, select 5 kV and spot size of 3.0.

1.3.5) Select a 1 mm aperture by manual aperture adjustment. Adjust focus, stigmation, brightness, and contrast to obtain a well-resolved image, as previously detailed.

1.3.6) Decrease magnification to < 1,000x.

1.4) SEM Setup in Low Pressure Water Vapor

1.4.1) Select a pressure of 11 Pa in the control software dropdown box.

1.4.2) Select “Low Pressure” mode in the “Vacuum” settings in the ESEM software to introduce water vapor.

1.4.3) Select “Beam On” in the control software upon pressure stabilization. Select a dwell time of <10 μs and a resolution of 1024 x 884 in the drop-down boxes of the control software.

1.4.4) Adjust the image brightness, contrast, focus, and stigmation as previously detailed.

1.4.5) Navigate to the desired milling region. Rotate the image orientation by selecting Scan | Scan Rotation in the control software, if required. Select a suitable rotation angle that aligns with the native vertical and horizontal scan orientation of the SEM.

1.4.6) For milling feature sizes on the order of 1 μm , select a magnification of 40,000x. Select a magnification of 20,000x to mill features with dimensions up to 5 μm .

1.4.7) Pause the electron beam by selecting the ' ' icon . An image of the CNT forest will be displayed and may be used for selecting reduced area milling regions while the beam is paused.

2. CNT Forest Milling

2.1) Instructions for CNT forest milling using a rectangular selected area

2.1.1) Choose the 'Reduced Area' tool in the control software, or select Scan-Reduced Area in the software menu. Extend a reduced area rectangle over the area to be milled.

2.1.2) Adjust the image resolution to 2048 x 1768. Increase the dwell time to 2 ms. If 2 ms is not available, navigate to the Scan | Preferences and select the "Scanning" tab. Select an existing scan time and type "2.0 ms" into the "Dwell Time" field. Click "OK" to close the menu.

2.1.3) Select the ' ' icon in the control software to activate the electron beam.

2.1.4) Select the ' ' icon so that the beam rasters over the selected area one time. Select the icon immediately after step 2.1.3. The scan duration depends on the size of the selected area, resolution and dwell time and may be approximated by multiplying the number of pixels within the scan area and the dwell time per pixel.

2.1.5) Decrease magnification to < 1,000x once the beam has completed rastering the selected area. Revert to the parameters used in step 1.3, including High Vacuum. Select "Beam On" to engage the beam.

2.2) Instructions for CNT forest milling along a horizontal line

2.2.1) Select the line scan feature by navigating to Scan | Line in the control software. The line width is determined by the size of the electron beam itself. Adjust the image resolution to 2048 x 1768 from the control software dropdown box. Increase the dwell time to 2 ms as detailed in step 2.1.2.

2.2.2) Using the still image acquired before pausing the electron beam, place the line over the area to be milled.

2.2.3) Select the videoscope icon or navigate to the Scan menu and select "Videoscope." Using the videoscope tool provides feedback relative to when a line scan has fully completed.

2.2.4) Select the ' ' icon to scan electron beam across the width of the line.

2.2.5) Select the ' ' icon to blank the electron beam.

2.3) Instructions for CNT Forest milling using software-controlled electron beam rastering

2.3.1) Pattern Generation

2.3.1.1) Design a milling pattern of interest using a CAD software package such as AutoCAD.

2.3.1.2) Using “Nanometer Pattern Generation System” (NPGS) software, import the CAD pattern file.

2.3.1.3) Convert the shapes to solid features by selected “Filled Polygons” in the NPGS software.

2.3.1.4) Save the drawing as a ‘.dc2’ file in a designated project folder of NPGS.

2.3.1.5) Using NPGS, navigate to the project folder containing the “.dc2” file. Right select the “.dc2” file and select “Run File Editor” to convert the drawing to NPGS code. Typical parameters used to pattern CNT forests at given conditions are as listed below:

Center-to-center distance = 5 nm

Line Spacing = 5 nm

Magnification = 10,000x

Desired Beam Current = 26

Line Dose = 100 nC/cm

2.3.2) Electron Beam Milling using NPGS Lithography Software

2.3.2.1) Select the “NPGS Mode” in NPGS software button to give control of the SEM to NPGS.

2.3.2.2) Highlight the pattern file and select “Process Run File” in NPGS to initiate milling.

2.3.2.3) Select “SEM Mode” in the NPGS software when patterning is finished. Select “High Vacuum” in the ESEM control software.

2.3.2.4) Select “Beam On” to inspect the milled region. Use conditions detailed in step 1.3.

3. Sample Removal

3.1) Vent the chamber by selecting “Vent” in the ESEM control software.

3.2) Open the ESEM door. Remove the stub by loosening the set screw.

3.3) Close the chamber door. Select “High Vacuum” in the control software.

REPRESENTATIVE RESULTS:

The ESEM technique was used to mill a CNT forest synthesized using thermal CVD^{15,16}. Selected area removal of a few CNTs from within a forest is shown in Figure 2¹¹. For this demonstration, parameters include 5 kV, spot size of 3, 11 Pa, 170,000x magnification, 2 ms dwell time, and an aperture of 30 μm .

To demonstrate a larger-scale area removal, the top surface of a CNT forest micropillar was selected for milling. SEM conditions are selected for rapid, large-area CNT forest removal. Namely, these conditions include a magnification of 20,000x, a pressure of 11 Pa, acceleration voltage of 30 kV, spot size of 5, dwell time of 2 ms, and a 1 mm aperture setting. A reduced

area box is chosen such that the irregular top surface to be removed is enclosed within the selected area. SEM micrographs of the CNT forest pillar are shown in Figure 3 before and after the selective area milling process. The red line in the figure represents the lower bound of the reduced area box used for milling.

Non-rectangular geometries achieved using software-controlled electron beam rastering and a relatively short 20 μm tall CNT forest. As shown in Figure 4, a 15 μm diameter circle was machined into a CNT forest. For this demonstration, the CNT forest was milled parallel to the CNT growth direction (normal to the substrate). Milling parameters used for this demonstration include a magnification of 10,000x, a pressure of 11 Pa, acceleration voltage of 30 kV, spot size of 5, dwell time of 2 ms, and 1 mm aperture setting. Figure 4 shows that the process milled the CNTs fully to the underlying silicon substrate.

Figure 1: Material Removal Rate Variation

Material removal rate (MRR) variation. SEM micrographs demonstrate the MRR in the transverse direction (a) by varying operating pressure from 133, 66, 33, 66, and 11 Pa (top to bottom) and (b) in the axial cutting direction by varying dwell time from 3, 2, 1, and 0.5 ms/pixel (left to right). The MRR is plotted as a function of incremental changes in pressure, acceleration voltage, beam current, and dwell time in the (c) transverse and (d) axial cutting directions. The MRR as a function of electron dose varies nearly linearly in both the (e) transverse and (f) axial milling orientation. This figure is reproduced with permission from reference¹¹.

Figure 2: Milling of Individual CNTs.

SEM micrograph showing individual CNTs from within a forest selected for local milling (a) before and (b) after milling. This figure is reproduced with permission from reference¹¹.

Figure 3: Milling of a CNT Forest.

A 10 μm wide CNT forest pillar (a) before and (b) after selective area milling using ESEM-based milling. Milling conditions include magnification of 20,000x, a pressure of 11 Pa, acceleration voltage of 30 kV, spot size of 5, dwell time of 2 ms per pixel, and 30 μm aperture. The red line in the figure represents the lower bound of the selective area rectangle used in the milling process.

Figure 4: Patterned Milling of CNT Forest.

Software-controlled electron beam rastering is used to define and mill a 15 μm diameter circle in a CNT forest. In this setup, the milling direction was parallel to the CNT growth direction from the top surface to the underlying substrate.

Figure 5: Deposited Carbon after Milling.

SEM micrographs showing the surface finish of ESEM milled CNT forests. (a) The top surface of a CNT forest shows the surface variation between the milled and as-synthesized regions. (b) Higher magnifications reveal that some amorphous carbon deposits are left behind during the cutting process.

DISCUSSION:

The protocol details best practices for milling relatively large (micron-scale) features in CNT forests. In general, the material removal rate may be reduced by reducing the acceleration voltage, spot size, and aperture diameter. To trim a specific CNT within a forest, recommended conditions include 5 kV, a spot size of 3, and an aperture that is 50 μm or less in diameter. Note that the milling technique using reduced area rectangles is detailed such that the electron beam rasters the enclosed region only one time. The reduced area may be scanned multiple times if additional cutting depth is desired; however, we illustrate a single scan for simplicity. We note that the extended electron beam dwell time, high current, and high acceleration voltage represent conditions that are frequently avoided for imaging of carbon-based materials; however, these aggressive parameters in a low-pressure water vapor ambient are critical for achieving large-scale milling. Further, we note that similar imaging conditions in the absence of low-pressure water vapor results in little CNT damage.

The ESEM-based milling method described in this work is a minimally disruptive machining method that preserves neighboring CNT forest structural morphology. The technique is amenable to removing nanoscale features such as segments of individual CNTs and also to removing regions spanning many microns. We demonstrate the technique using reduced area rectangles, lines, and arbitrary patterns using software-controlled electron beam rastering. While the technique is relatively clean compared to FIB-based milling, small amounts of carbon residue exists on milled surfaces. Current research is addressing avenues for reducing this residue. Additionally, the material removal rates shown in Figure 1 were obtained for a CNT forest with CNTs featuring an average outer and inner diameter of 10 and 7 nm, respectively. Material removal rates are expected to be a function of CNT density, CNT diameter, and CNT alignment. Figure 1 should be consulted as a guide, recognizing that the stated material removal rate is specific to this CNT forest morphology. While qualitative trends represented in the figure are expected to hold for all CNT forests, some experimentation may be required to find the optimal parameters for a different material system.

While the ESEM machining methodology is demonstrated using CNT forests, it is equally applicable for graphene and other carbon-based materials. The technique does not require delamination of the CNT forest for processing and does not introduce external heavy elements that may significantly alter the surrounding CNT forest morphology. The procedure may be used for inspecting CNT forest internal morphology, and perhaps for producing 3-D lattices structures for microscale prototyping which may be functionally coated (with alumina for enhanced stiffness^{17,18}, for example).

The technique is currently being utilized to examine the internal structural morphology of CNT forests. Because structural morphology is intimately linked with functional properties^{16,19-22}, characterization of CNT forest morphology in three dimensional space may provide additional insights into the governing structure-property relationships. With the ability to precisely mill into a forest and observe the internal nanotube interactions, CNT forest synthesis modeling and analytical models can be tuned and validated.

The emphasis of the ESEM milling technique to date has been directed towards rapid material removal with less focus on optimizing conditions for reducing the residual carbon residue. A future direction is to explore the mechanism of amorphous carbon deposition in the immediate vicinity of the cut surfaces when large volumes of materials are removed, as shown in Figure 5. With a broad parameter space available for exploration, including environmental gas composition, vapor pressure, acceleration voltage, probe current, and electron beam rastering conditions, enhanced surface cleanliness may be achieved.

ACKNOWLEDGEMENTS:

This work was supported by the Air Force Office of Scientific Research grant FA9550-16-1-0011 and University of Missouri startup funds. The authors would like to thank the University of Missouri Electron Microscopy Core facility for assistance with SEM imaging and use of patterning equipment and software.

DISCLOSURE:

The authors declare that they have no competing financial interests.

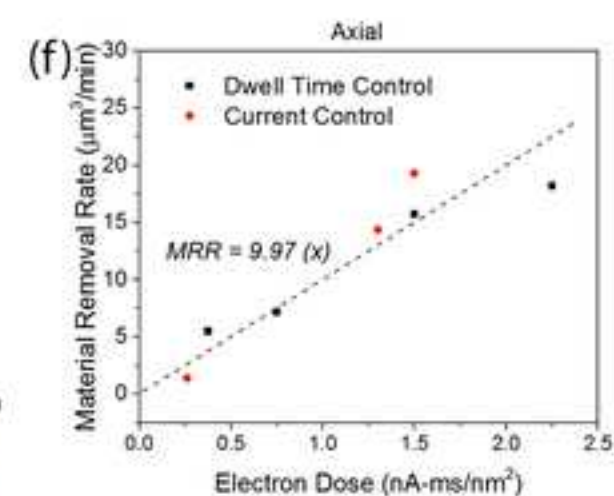
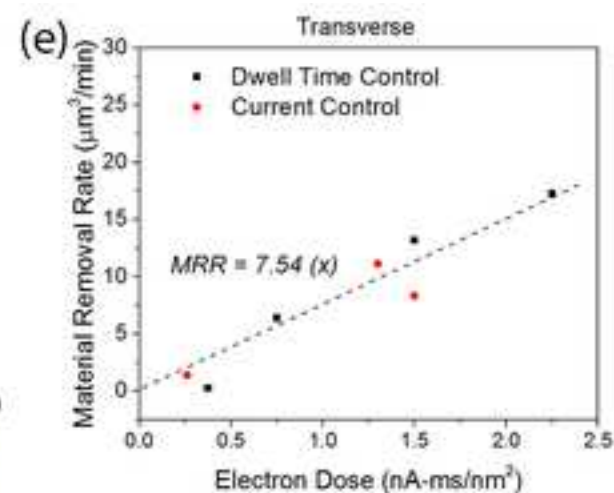
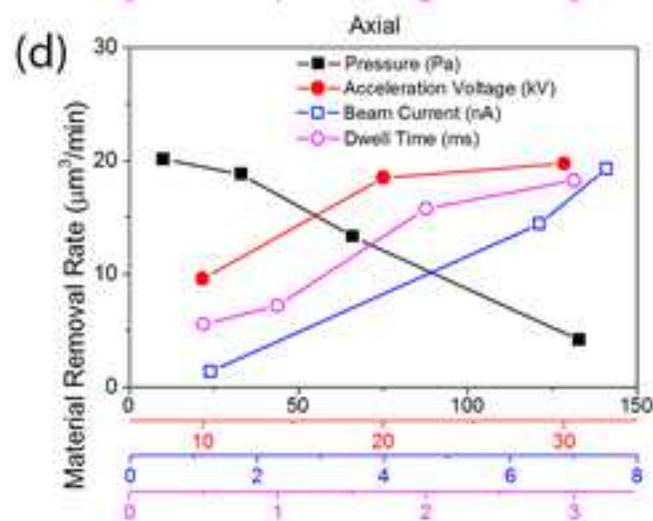
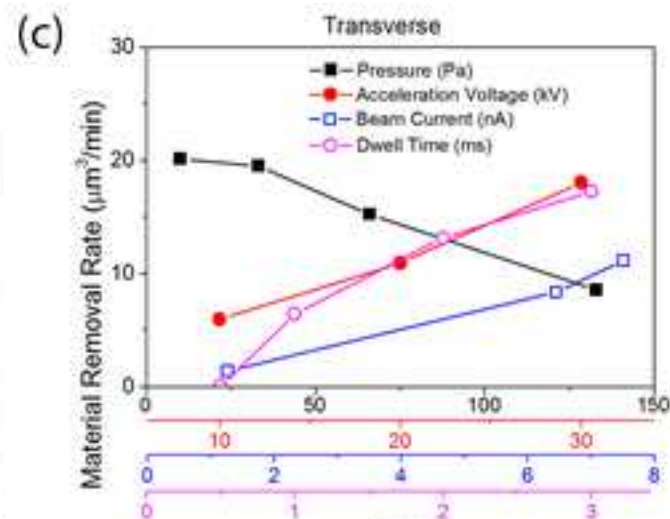
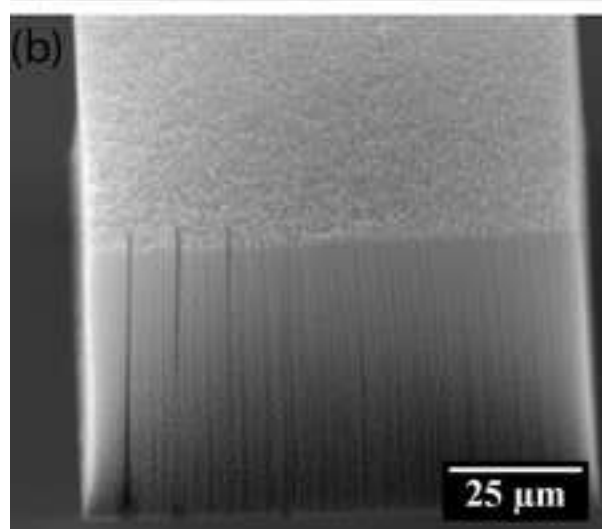
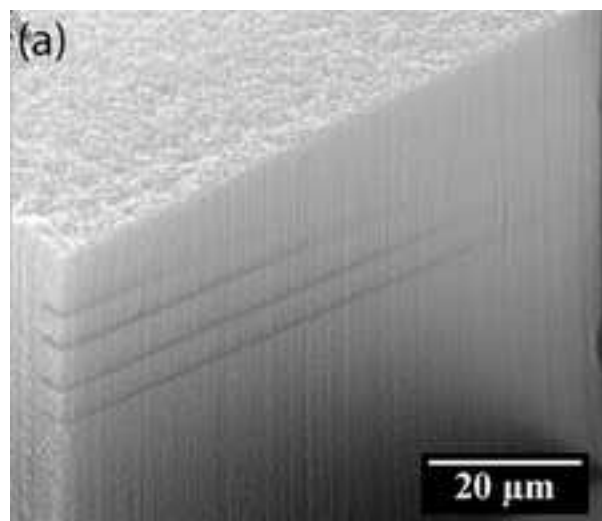
REFERENCES:

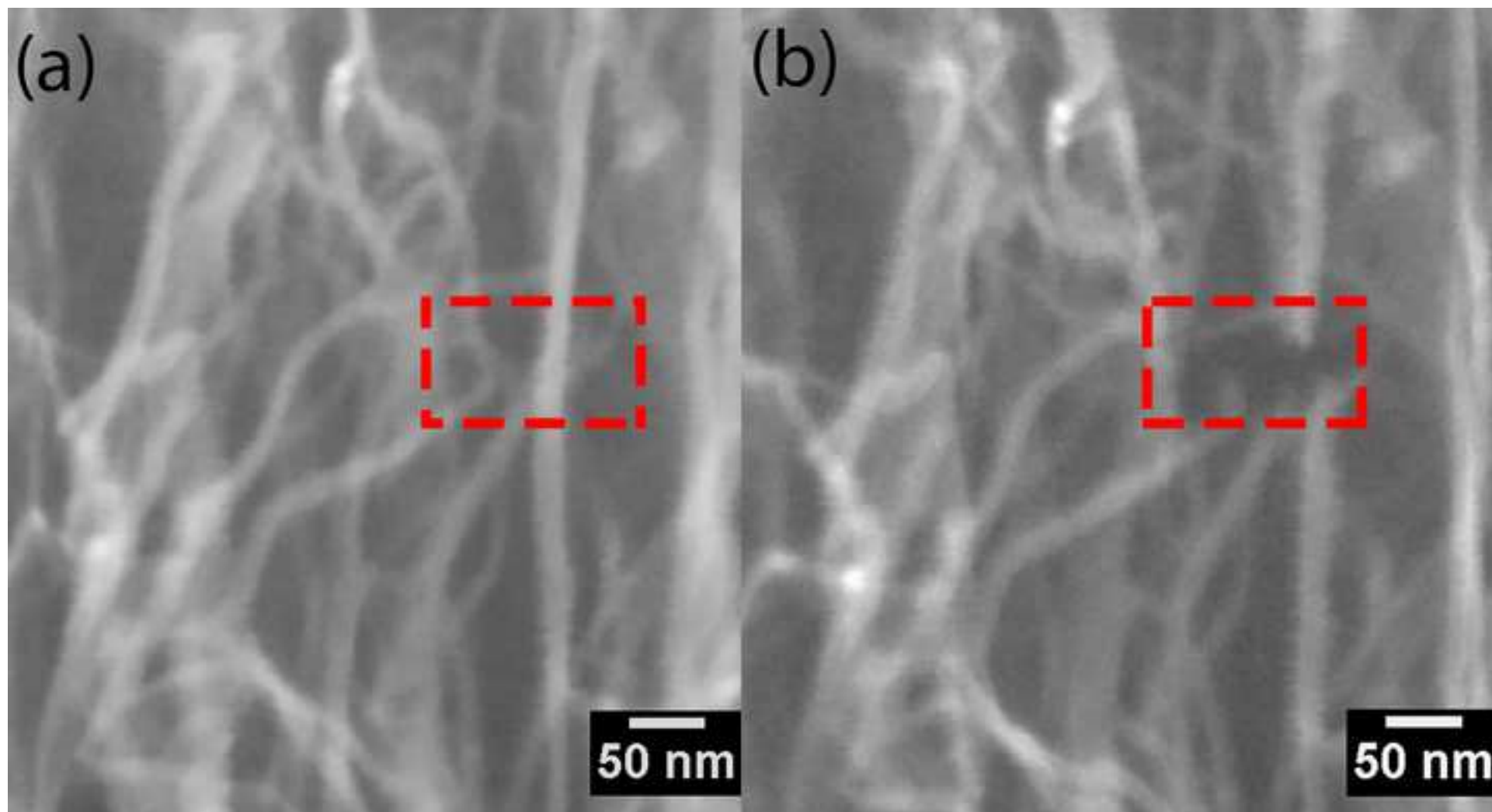
- 1 Labunov, V. *et al.* Femtosecond laser modification of an array of vertically aligned carbon nanotubes intercalated with Fe phase nanoparticles. *Nanoscale Res Lett.* **8** (1), 375-375, doi:10.1186/1556-276X-8-375 (2013).
- 2 Lim, K. Y. *et al.* Laser Pruning of Carbon Nanotubes as a Route to Static and Movable Structures. *Adv Mater.* **15** (4), 300-303, doi:10.1002/adma.200390072 (2003).
- 3 Raghuvier, M. S. *et al.* Nanomachining carbon nanotubes with ion beams. *Appl Phys Lett.* **84** (22), 4484-4486, doi:[10.1063/1.1756191](https://doi.org/10.1063/1.1756191) (2004).
- 4 Sears, K., Skouritis, C., Atkinson, K., Finn, N. & Humphries, W. Focused ion beam milling of carbon nanotube yarns to study the relationship between structure and strength. *Carbon.* **48** (15), 4450-4456, doi:[10.1016/j.carbon.2010.08.004](https://doi.org/10.1016/j.carbon.2010.08.004) (2010).
- 5 Smith, B. W. & Luzzi, D. E. Electron irradiation effects in single wall carbon nanotubes. *J Appl Phys.* **90** (7), 3509-3515, doi:[10.1063/1.1383020](https://doi.org/10.1063/1.1383020) (2001).
- 6 Banhart, F., Li, J. & Terrones, M. Cutting Single-Walled Carbon Nanotubes with an Electron Beam: Evidence for Atom Migration Inside Nanotubes. *Small.* **1** (10), 953-956, doi:10.1002/sml.200500162 (2005).
- 7 Krasheninnikov, A. V., Banhart, F., Li, J. X., Foster, A. S. & Nieminen, R. M. Stability of carbon nanotubes under electron irradiation: Role of tube diameter and chirality. *Phys Rev B.* **72** (12), 125428 (2005).
- 8 Royall, C. P., Thiel, B. L. & Donald, A. M. Radiation damage of water in environmental scanning electron microscopy. *J Microsc.* **204** (3), 185-195, doi:10.1046/j.1365-2818.2001.00948.x (2001).
- 9 Yuzvinsky, T. D., Fennimore, A. M., Mickelson, W., Esquivias, C. & Zettl, A. Precision cutting of nanotubes with a low-energy electron beam. *Appl Phys Lett.* **86** (5), 053109, doi:[10.1063/1.1857081](https://doi.org/10.1063/1.1857081) (2005).

- 10 Liu, P., Arai, F. & Fukuda, T. Cutting of carbon nanotubes assisted with oxygen gas inside a scanning electron microscope. *Appl Phys Lett.* **89** (11), -, doi:[10.1063/1.2348779](https://doi.org/10.1063/1.2348779) (2006).
- 11 Rajabifar, B. *et al.* Three-dimensional machining of carbon nanotube forests using water-assisted scanning electron microscope processing. *Appl Phys Lett.* **107** (14), 143102, doi:[10.1063/1.4932522](https://doi.org/10.1063/1.4932522) (2015).
- 12 Lassiter, M. G. & Rack, P. D. Nanoscale electron beam induced etching: a continuum model that correlates the etch profile to the experimental parameters. *Nanotechnology.* **19** (45), 455306 (2008).
- 13 Amama, P. B. *et al.* Influence of Alumina Type on the Evolution and Activity of Alumina-Supported Fe Catalysts in Single-Walled Carbon Nanotube Carpet Growth. *ACS Nano.* **4** (2), 895-904, doi:10.1021/nn901700u (2010).
- 14 Almkhelife, H., Carpena-Nunez, J., Back, T. C. & Amama, P. B. Gaseous product mixture from Fischer-Tropsch synthesis as an efficient carbon feedstock for low temperature CVD growth of carbon nanotube carpets. *Nanoscale.* doi:10.1039/C6NR03679A (2016).
- 15 Maschmann, M. R., Ehlert, G. J., Tawfick, S., Hart, A. J. & Baur, J. W. Continuum analysis of carbon nanotube array buckling enabled by anisotropic elastic measurements and modeling. *Carbon.* **66** (0), 377-386, doi:[10.1016/j.carbon.2013.09.013](https://doi.org/10.1016/j.carbon.2013.09.013) (2014).
- 16 Maschmann, M. R. *et al.* Visualizing Strain Evolution and Coordinated Buckling within CNT Arrays by In Situ Digital Image Correlation. *Adv Funct Mater.* **22** (22), 4686-4695, doi:10.1002/adfm.201290134 (2012).
- 17 Abadi, P. P. S. S., Maschmann, M. R., Baur, J. W., Graham, S. & Cola, B. A. Deformation response of conformally coated carbon nanotube forests. *Nanotechnology.* **24** (47), 475707 (2013).
- 18 Brieland-Shoultz, A. *et al.* Scaling the Stiffness, Strength, and Toughness of Ceramic-Coated Nanotube Foams into the Structural Regime. *Adv Funct Mater.* **24** (36), 5728-5735, doi:10.1002/adfm.201400851 (2014).
- 19 Maschmann, M. R., Dickinson, B., Ehlert, G. J. & Baur, J. W. Force sensitive carbon nanotube arrays for biologically inspired airflow sensing. *Smart Mater Struct.* **21** (9), 094024 (2012).
- 20 Maschmann, M. R. *et al.* In situ SEM Observation of Column-like and Foam-like CNT Array Nanoindentation. *ACS Appl Mater Inter.* **3** (3), 648-653, doi:10.1021/am101262g (2011).
- 21 Pathak, S., Raney, J. R. & Daraio, C. Effect of morphology on the strain recovery of vertically aligned carbon nanotube arrays: An in situ study. *Carbon.* **63** 303-316, doi:[10.1016/j.carbon.2013.06.083](https://doi.org/10.1016/j.carbon.2013.06.083) (2013).
- 22 Pour Shahid Saeed Abadi, P., Hutchens, S. B., Greer, J. R., Cola, B. A. & Graham, S. Effects of morphology on the micro-compression response of carbon nanotube forests. *Nanoscale.* **4** (11), 3373-3380, doi:10.1039/C2NR30474K (2012).
- 23 Maschmann, M. R. Integrated simulation of active carbon nanotube forest growth and mechanical compression. *Carbon.* **86** (0), 26-37, doi:[10.1016/j.carbon.2015.01.013](https://doi.org/10.1016/j.carbon.2015.01.013) (2015).

Figure 1

[Click here to download Figure1.tif](#)





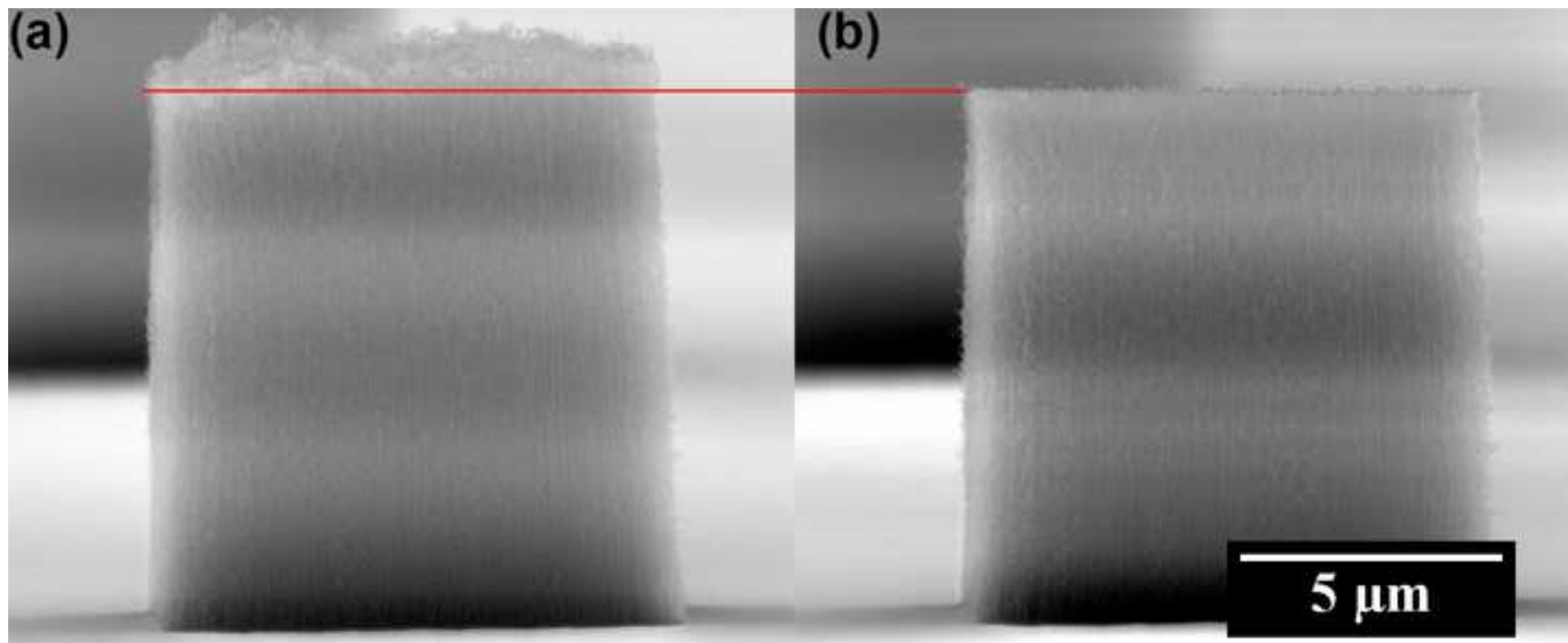
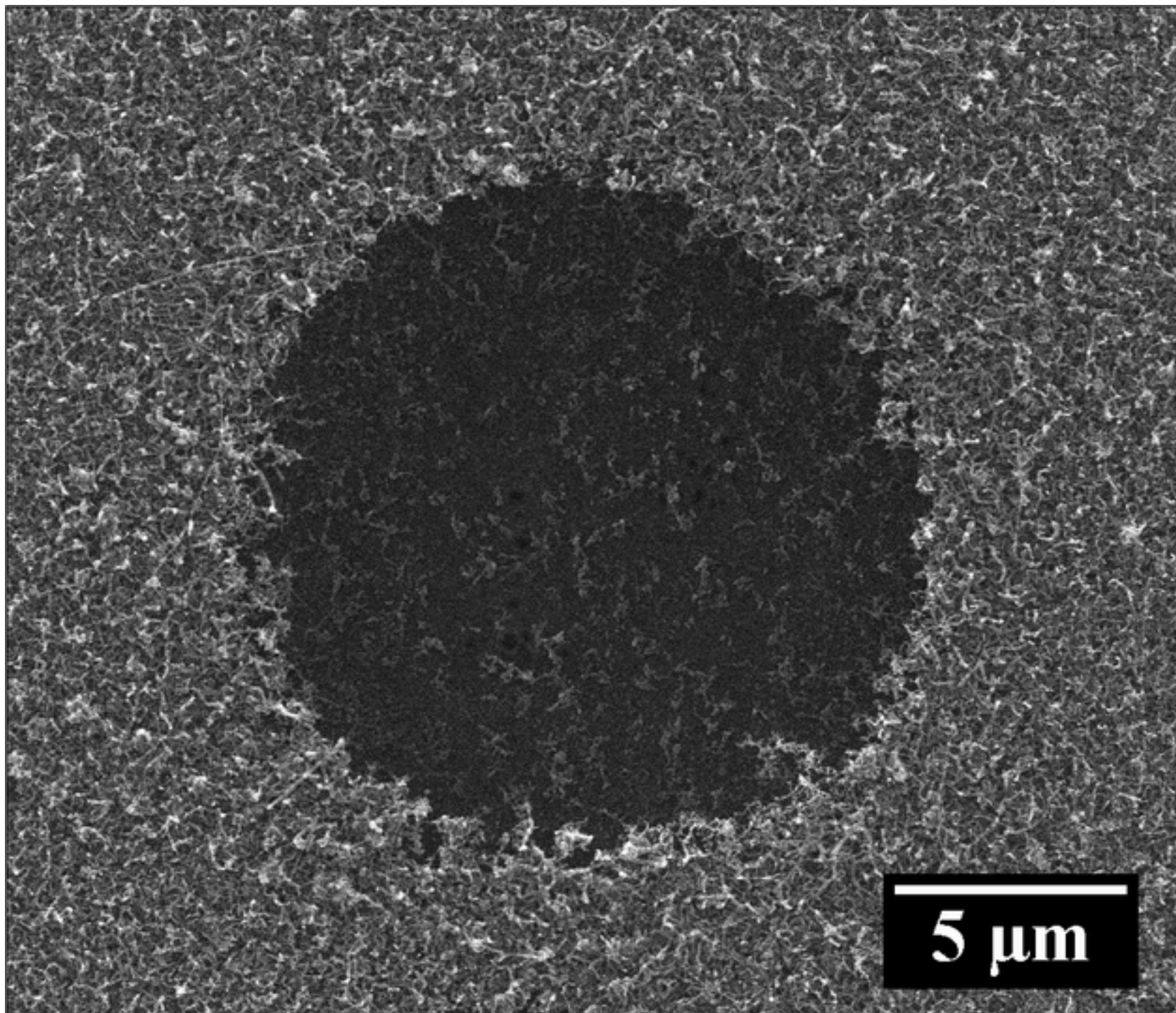
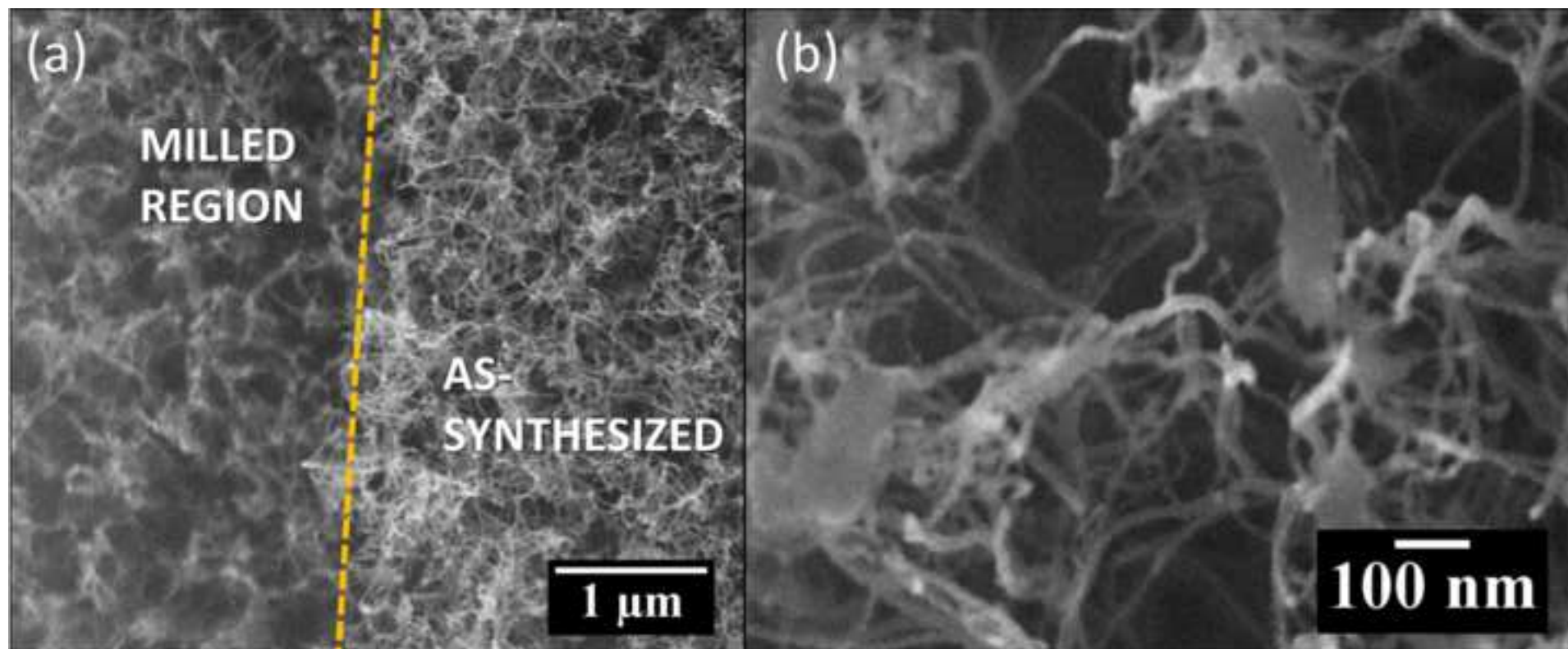


Figure 4





Name of Material/ Equipment	Company	Catalog Number	Comments/Description
100 mm diameter silicon wafer with 1 micron thermal oxide	University Wafer		Beginning substrate
Iron sputter target	Kurt J. Lesker	EJTFEXX351A2	Sputter target
Savannah 200	Cambridge		For atomic layer deposition of alumina
Quanta 600F Environmental SEM	FEI		Environmental scanning electron microscope used to support a low-pressure water vapor ambient environment for CNT forest milling
xT Microscope Control software	FEI	4.1.7	Control software used on Quanta 600F ESEM
Nanometer Pattern Generation System - Software	JC Nability Lithography Systems	Version 9	Software used for electron-beam
Dedicated computer with PCI516 Lithography board			Equipment used for electron-beam lithography
DesignCAD software		V 21.2	Optional equipment used to generate patterns for electron-beam lithography
E-beam lithography mount	Ted Pella	16405	Electron beam lithography mount with a Faraday cup and gold nanoparticles on carbon tape
Picoammeter	Keithley	6485	Used with the Faraday cup to quantify beam current
12.7 mm diameter SEM stub	Ted Pella	16111	SEM stub

45 degree pin stub holder	Ted Pella	15329	Optional equipment used to mill the cross section of a CNT forest
---------------------------	-----------	-------	---



1 Alewife Center #200
Cambridge, MA 02140
tel. 617.945.9051
www.jove.com

ARTICLE AND VIDEO LICENSE AGREEMENT

Title of Article: Precision Milling of Carbon Nanotube Forests using Low Pressure SEM

Author(s): Josef Brown, Benjamin Davis, Matthew Maschmann

Item 1 (check one box): The Author elects to have the Materials be made available (as described at <http://www.jove.com/publish>) via: ☒ Standard Access ☐ Open Access

Item 2 (check one box):

- ☒ The Author is NOT a United States government employee.
- ☐ The Author is a United States government employee and the Materials were prepared in the course of his or her duties as a United States government employee.
- ☐ The Author is a United States government employee but the Materials were NOT prepared in the course of his or her duties as a United States government employee.

ARTICLE AND VIDEO LICENSE AGREEMENT

1. **Defined Terms.** As used in this Article and Video License Agreement, the following terms shall have the following meanings: "Agreement" means this Article and Video License Agreement; "Article" means the article specified on the last page of this Agreement, including any associated materials such as texts, figures, tables, artwork, abstracts, or summaries contained therein; "Author" means the author who is a signatory to this Agreement; "Collective Work" means a work, such as a periodical issue, anthology or encyclopedia, in which the Materials in their entirety in unmodified form, along with a number of other contributions, constituting separate and independent works in themselves, are assembled into a collective whole; "CRC License" means the Creative Commons Attribution-Non Commercial-No Derivs 3.0 Unported Agreement, the terms and conditions of which can be found at: <http://creativecommons.org/licenses/by-nc-nd/3.0/legalcode>; "Derivative Work" means a work based upon the Materials or upon the Materials and other pre-existing works, such as a translation, musical arrangement, dramatization, fictionalization, motion picture version, sound recording, art reproduction, abridgment, condensation, or any other form in which the Materials may be recast, transformed, or adapted; "Institution" means the institution, listed on the last page of this Agreement, by which the Author was employed at the time of the creation of the Materials; "JOVE" means MyJOVE Corporation, a Massachusetts corporation and the publisher of *The Journal of Visualized Experiments*; "Materials" means the Article and / or the Video; "Parties" means the Author and JOVE; "Video" means any video(s) made by the Author, alone or in conjunction with any other parties, or by JOVE or its affiliates or agents, individually or in collaboration with the Author or any other parties, incorporating all or any portion of the Article, and in which the Author may or may not appear.

2. **Background.** The Author, who is the author of the Article, in order to ensure the dissemination and protection of the Article, desires to have the JOVE publish the Article and create and transmit videos based on the Article. In furtherance of such goals, the Parties desire to memorialize in this Agreement the respective rights of each Party in and to the Article and the Video.

3. **Grant of Rights in Article.** In consideration of JOVE agreeing to publish the Article, the Author hereby grants to JOVE, subject to Sections 4 and 7 below, the exclusive, royalty-free, perpetual (for the full term of copyright in the Article, including any extensions thereto) license (a) to publish, reproduce, distribute, display and store the Article in all forms, formats and media whether now known or hereafter developed (including without limitation in print, digital and electronic form) throughout the world. (b) to translate the Article into other languages, create adaptations, summaries or extracts of the Article or other Derivative Works (including, without limitation, the Video) or Collective Works based on all or any portion of the Article and exercise all of the rights set forth in (a) above in such translations, adaptations, summaries, extracts, Derivative Works or Collective Works and (c) to license others to do any or all of the above. The foregoing rights may be exercised in all media and formats, whether now known or hereafter devised, and include the right to make such modifications as are technically necessary to exercise the rights in other media and formats. If the "Open Access" box has been checked in Item 1 above, JOVE and the Author hereby grant to the public all such rights in the Article as provided in, but subject to all limitations and requirements set forth in, the CRC License.

ARTICLE AND VIDEO LICENSE AGREEMENT

4. Retention of Rights in Article. Notwithstanding the exclusive license granted to JoVE in Section 3 above, the Author shall, with respect to the Article, retain the non-exclusive right to use all or part of the Article for the non-commercial purpose of giving lectures, presentations or teaching classes, and to post a copy of the Article on the Institution's website or the Author's personal website, in each case provided that a link to the Article on the JoVE website is provided and notice of JoVE's copyright in the Article is included. All non-copyright intellectual property rights in and to the Article, such as patent rights, shall remain with the Author.

5. Grant of Rights in Video – Standard Access. This Section 5 applies if the "Standard Access" box has been checked in Item 1 above or if no box has been checked in Item 1 above. In consideration of JoVE agreeing to produce, display or otherwise assist with the Video, the Author hereby acknowledges and agrees that, Subject to Section 7 below, JoVE is and shall be the sole and exclusive owner of all rights of any nature, including, without limitation, all copyrights, in and to the Video. To the extent that, by law, the Author is deemed, now or at any time in the future, to have any rights of any nature in or to the Video, the Author hereby disclaims all such rights and transfers all such rights to JoVE.

6. Grant of Rights in Video – Open Access. This Section 6 applies only if the "Open Access" box has been checked in Item 1 above. In consideration of JoVE agreeing to produce, display or otherwise assist with the Video, the Author hereby grants to JoVE, subject to Section 7 below, the exclusive, royalty-free, perpetual (for the full term of copyright in the Article, including any extensions thereto) license (a) to publish, reproduce, distribute, display and store the Video in all forms, formats and media whether now known or hereafter developed (including without limitation in print, digital and electronic form) throughout the world, (b) to translate the Video into other languages, create adaptations, summaries or extracts of the Video or other Derivative Works or Collective Works based on all or any portion of the Video and exercise all of the rights set forth in (a) above in such translations, adaptations, summaries, extracts, Derivative Works or Collective Works and (c) to license others to do any or all of the above. The foregoing rights may be exercised in all media and formats, whether now known or hereafter devised, and include the right to make such modifications as are technically necessary to exercise the rights in other media and formats. For any Video to which this Section 6 is applicable, JoVE and the Author hereby grant to the public all such rights in the Video as provided in, but subject to all limitations and requirements set forth in, the CRC License.

7. Government Employees. If the Author is a United States government employee and the Article was prepared in the course of his or her duties as a United States government employee, as indicated in Item 2 above, and any of the licenses or grants granted by the Author hereunder exceed the scope of the 17 U.S.C. 403, then the rights granted hereunder shall be limited to the maximum rights permitted under such

statute. In such case, all provisions contained herein that are not in conflict with such statute shall remain in full force and effect, and all provisions contained herein that do so conflict shall be deemed to be amended so as to provide to JoVE the maximum rights permissible within such statute.

8. Likeness, Privacy, Personality. The Author hereby grants JoVE the right to use the Author's name, voice, likeness, picture, photograph, image, biography and performance in any way, commercial or otherwise, in connection with the Materials and the sale, promotion and distribution thereof. The Author hereby waives any and all rights he or she may have, relating to his or her appearance in the Video or otherwise relating to the Materials, under all applicable privacy, likeness, personality or similar laws.

9. Author Warranties. The Author represents and warrants that the Article is original, that it has not been published, that the copyright interest is owned by the Author (or, if more than one author is listed at the beginning of this Agreement, by such authors collectively) and has not been assigned, licensed, or otherwise transferred to any other party. The Author represents and warrants that the author(s) listed at the top of this Agreement are the only authors of the Materials. If more than one author is listed at the top of this Agreement and if any such author has not entered into a separate Article and Video License Agreement with JoVE relating to the Materials, the Author represents and warrants that the Author has been authorized by each of the other such authors to execute this Agreement on his or her behalf and to bind him or her with respect to the terms of this Agreement as if each of them had been a party hereto as an Author. The Author warrants that the use, reproduction, distribution, public or private performance or display, and/or modification of all or any portion of the Materials does not and will not violate, infringe and/or misappropriate the patent, trademark, intellectual property or other rights of any third party. The Author represents and warrants that it has and will continue to comply with all government, institutional and other regulations, including, without limitation all institutional, laboratory, hospital, ethical, human and animal treatment, privacy, and all other rules, regulations, laws, procedures or guidelines, applicable to the Materials, and that all research involving human and animal subjects has been approved by the Author's relevant institutional review board.

10. JoVE Discretion. If the Author requests the assistance of JoVE in producing the Video in the Author's facility, the Author shall ensure that the presence of JoVE employees, agents or independent contractors is in accordance with the relevant regulations of the Author's institution. If more than one author is listed at the beginning of this Agreement, JoVE may, in its sole discretion, elect not take any action with respect to the Article until such time as it has received complete, executed Article and Video License Agreements from each such author. JoVE reserves the right, in its absolute and sole discretion and without giving any reason therefore, to accept or decline any work submitted to JoVE. JoVE and its employees, agents and independent contractors shall have

ARTICLE AND VIDEO LICENSE AGREEMENT

full, unfettered access to the facilities of the Author or of the Author's institution as necessary to make the Video, whether actually published or not. JoVE has sole discretion as to the method of making and publishing the Materials, including, without limitation, to all decisions regarding editing, lighting, filming, timing of publication, if any, length, quality, content and the like.

11. Indemnification. The Author agrees to indemnify JoVE and/or its successors and assigns from and against any and all claims, costs, and expenses, including attorney's fees, arising out of any breach of any warranty or other representations contained herein. The Author further agrees to indemnify and hold harmless JoVE from and against any and all claims, costs, and expenses, including attorney's fees, resulting from the breach by the Author of any representation or warranty contained herein or from allegations or instances of violation of intellectual property rights, damage to the Author's or the Author's institution's facilities, fraud, libel, defamation, research, equipment, experiments, property damage, personal injury, violations of institutional, laboratory, hospital, ethical, human and animal treatment, privacy or other rules, regulations, laws, procedures or guidelines, liabilities and other losses or damages related in any way to the submission of work to JoVE, making of videos by JoVE, or publication in JoVE or elsewhere by JoVE. The Author shall be responsible for, and shall hold JoVE harmless from, damages caused by lack of sterilization, lack of cleanliness or by contamination due to the making of a video by JoVE its employees, agents or independent contractors. All sterilization, cleanliness or decontamination procedures shall be solely the responsibility of the Author and shall be undertaken at the Author's

expense. All indemnifications provided herein shall include JoVE's attorney's fees and costs related to said losses or damages. Such indemnification and holding harmless shall include such losses or damages incurred by, or in connection with, acts or omissions of JoVE, its employees, agents or independent contractors.

12. Fees. To cover the cost incurred for publication, JoVE must receive payment before production and publication the Materials. Payment is due in 21 days of invoice. Should the Materials not be published due to an editorial or production decision, these funds will be returned to the Author. Withdrawal by the Author of any submitted Materials after final peer review approval will result in a US\$1,200 fee to cover pre-production expenses incurred by JoVE. If payment is not received by the completion of filming, production and publication of the Materials will be suspended until payment is received.

13. Transfer, Governing Law. This Agreement may be assigned by JoVE and shall inure to the benefits of any of JoVE's successors and assignees. This Agreement shall be governed and construed by the internal laws of the Commonwealth of Massachusetts without giving effect to any conflict of law provision thereunder. This Agreement may be executed in counterparts, each of which shall be deemed an original, but all of which together shall be deemed to be one and the same agreement. A signed copy of this Agreement delivered by facsimile, e-mail or other means of electronic transmission shall be deemed to have the same legal effect as delivery of an original signed copy of this Agreement.

A signed copy of this document must be sent with all new submissions. Only one Agreement required per submission.

CORRESPONDING AUTHOR:

Name: MATTHEW R. MASCHMANN
Department: MECHANICAL AND AEROSPACE ENGINEERING
Institution: UNIVERSITY OF MISSOURI
Article Title: Precision Milling of Carbon Nanotube Forests using Low Pressure SEM
Signature: Matthew R. Maschmann Date: 6/20/2016

Please submit a signed and dated copy of this license by one of the following three methods:

- 1) Upload a scanned copy of the document as a pdf on the JoVE submission site;
- 2) Fax the document to +1.866.381.2236;
- 3) Mail the document to JoVE / Attn: JoVE Editorial / 1 Alewife Center #200 / Cambridge, MA 02139

For questions, please email submissions@jove.com or call +1.617.945.9051

Editorial comments:

The manuscript has been modified by the Science Editor to comply with the JoVE formatting standard. Please maintain the current formatting throughout the manuscript. The updated manuscript (555149_R1_070816.docx) is located in your Editorial Manager account. In the revised PDF submission, there is a hyperlink for downloading the .docx file. Please download the .docx file and use this updated version for any future revisions.

1. Formatting: Please number steps sequentially. For instance, there are two steps 2.1.4.

Completed

2. Grammar: Line 56 – “to selectively removing”

Corrected

3. Visualization: 1.3.3 should not be highlighted for filming as it cannot be visualized.

Figure 1 has been modified and updated.

4. Additional detail is required:

-1.3.3 – It is unclear how Figure 1 would help estimate these values.

Figure 1 has been modified and updated.

-1.3.8 – How is the milling location noted? Is it marked in the software?

This sentence was removed because it is unnecessary. The intent of the statement was to alert the user to recall where the location of interest was located within the field of view at lower magnification.

-1.4.5 – What determines the appropriate angle here?

This instruction has been modified with the following sentence: “Select a suitable rotation angle that aligns with the native vertical and horizontal scan orientation of the SEM.”

-First 2.1.4 – When does rastering begin? How long is the beam on before pausing it?

Rastering begins in the prior step. The pause icon should be selected immediately after the previous step. This instruction has been modified.

-Second 2.1.4 – How long should the beam be on?

The scan duration depends on the size of the selected area, resolution and dwell time and may be approximated by multiplying the number of pixels within the scan area and the dwell time per pixel.

-2.3.2.4 – Which conditions? What step 2.1.4?

Step 1.3.6. This has been updated in the manuscript.

5. Please remove commercial branding: Line 113 – “FEI Quanta 600F” – Please indicate that other systems could be used.

Completed.

6. Discussion:

-Line 341 – Rates are not shown in Figure 1. Please clarify. Figure updated.

-Please discuss the critical steps of the protocol. Additional discussion added.

Reviewers' comments:

Reviewer #1:

Manuscript Summary:

This work demonstrates the milling of CNTs using precise oxidative processing. The pictures are sufficient to represent this technique, and the description seems accurate and thorough. I see no reason for this to not be accepted for whatever further steps are needed to process a video article.

Major Concerns:

N/A

Minor Concerns:

N/A

Additional Comments to Authors:

N/A

Reviewer #2:

Manuscript Summary:

In this work, the authors provide the protocols and examples for the CNTs milling methods using ESEM. The detailed processing conditions in ESEM were explained, as well as the synthesis of CNTs forests.

Major Concerns:

1. Although the authors explained the mechanism of CNTs milling process, the current manuscript is not enough to convey the central physics during those processes for the general readers who do not have experiences. More detailed descriptions about the underlying physics would be helpful for general readers.

Although the focus of this manuscript is procedural, we have added an equation to the manuscript to estimate the etch rate of CNTs based on the SEM parameters and the water vapor ambient. This equation relates observations to physical mechanisms, as detailed further in reference

2. As the authors mentioned, there have been several techniques to fabricate or manipulate CNT forests, such as TEM, FIB, and others. It is intuitive that ESEM is more effective and practical for large-scale applications. However, it would be important that ESEM milling process is able to control the precise parts or complex shapes. For the visualization of those points, the addition of samples which have more complex structures via the above CNT milling process would be needed.

The demonstration of a milled circle represents an arbitrary shape that may not be achieved with conventional x-y rastering of an electron beam. It is our intent to demonstrate that the technique may be utilized with electron-beam lithography software to enable arbitrary geometry control.

Minor Concerns:

1.1.1) and 1.1.2) This is the general procedure to synthesize vertically-aligned CNTs. In addition to ALD, it should be mentioned that other deposition methods, such as E-beam or thermal evaporation would be applicable.

The reviewer is correct in these statements. These steps have been modified to address this point.

1.3.3) Is there any quantified relation between the physical conditions of CNTs and the operating conditions of SEM? It would be needed to provide the regulation of the processing conditions.

Figure 1 has been modified to provide additional guidance relative to milling rates. Further, the addition of the etch rate equation on line 115 provides further guidance relative to the quantity of available reactions sites by CNT defects.

1.4.6) The relation between the milling feature size and a magnification might be described as some mathematical formulas or fitting parameters. Or the authors can provide one table to describe the

correlation of feature sizes and magnifications.

The relationship between feature size and magnification is outside of our previous examinations and will depend intimately on all parameters discussed in the manuscript (acceleration voltage, spot size, ambient pressure, magnification, resolution, working height, etc.). While it is envisioned that minimum feature resolution is an important metric for specific applications, we feel that it is outside the scope of the current work.