

Journal of Visualized Experiments

Combining wet and dry lab techniques to guide the crystallization of large coiled-coil containing proteins --Manuscript Draft--

Manuscript Number:	JoVE54886R3
Full Title:	Combining wet and dry lab techniques to guide the crystallization of large coiled-coil containing proteins
Article Type:	Invited Methods Article - JoVE Produced Video
Keywords:	X-ray crystallography; structure determination; coiled-coil; protein; Rho-kinase; Shroom; cytoskeleton
Manuscript Classifications:	1.11.284.430.214.190.750.50: Actin Cytoskeleton; 4.12.776: Proteins; 7.4.185: Cell Shape; 8.1.181.529.240: Crystallography
Corresponding Author:	Andrew P. VanDemark, Ph.D. University of Pittsburgh Pittsburgh, PA UNITED STATES
Corresponding Author Secondary Information:	
Corresponding Author E-Mail:	andyv@pitt.edu
Corresponding Author's Institution:	University of Pittsburgh
Corresponding Author's Secondary Institution:	
First Author:	Jenna K. Zalewski
First Author Secondary Information:	
Other Authors:	Jenna K. Zalewski Simone Heber Joshua H. Mo Keith T O'Conor Jeffrey D Hildebrand, Ph.D.
Order of Authors Secondary Information:	
Abstract:	Obtaining crystals for structure determination can be a difficult and time consuming proposition for any protein. Coiled-coil proteins and domains are found throughout nature, however, because of their physical properties and tendency to aggregate, they are traditionally viewed as being especially difficult to crystallize. Here, we utilize a variety of quick and simple techniques designed to identify a series of possible domain boundaries for a given coiled-coil protein, and then quickly characterize the behavior of these proteins in solution. With the addition of a strongly fluorescent tag (mRuby2), protein characterization is simple and straightforward. Visualization of the target protein easy under normal lighting and quantifiable with the use of an appropriate imager. The goal is to quickly identify candidates that can be removed from the crystallization pipeline because they are unlikely to succeed, affording more time for the best candidates and fewer funds expended on proteins that do not produce crystals. This process can be iterated to incorporate information gained from initial screening efforts, can be adapted for high-throughput expression and purification procedures, and is augmented by robotic screening for crystallization.
Author Comments:	Thank you for the opportunity to revise this document. We have attached a letter indicating how we addressed each item in a point by point manner.
Additional Information:	

Question	Response
If this article needs to be "in-press" by a certain date to satisfy grant requirements, please indicate the date below and explain in your cover letter.	

TITLE:

Combining wet and dry lab techniques to guide the crystallization of large coiled-coil containing proteins.

AUTHORS:

Jenna K. Zalewski
Department of Biological Sciences
University of Pittsburgh
Pittsburgh PA, USA
jkz3@pitt.edu

Simone Heber
Department of Biological Sciences
University of Pittsburgh
Pittsburgh PA, USA
&
Institute of Structural Biology
German Research Center for Environmental Health
Neuherberg, Germany
simone.heber@helmholtz-muenchen.de

Joshua H. Mo
Department of Biological Sciences
University of Pittsburgh
Pittsburgh PA, USA
jhm30@pitt.edu

Keith O'Conor
Department of Biological Sciences
University of Pittsburgh
Pittsburgh PA, USA
kto4@pitt.edu

Jeffrey D. Hildebrand
Department of Biological Sciences
University of Pittsburgh
Pittsburgh PA, USA
jeffh@pitt.edu

Andrew P. VanDemark
Department of Biological Sciences
University of Pittsburgh
Pittsburgh PA, USA
andyv@pitt.edu

(412) 648-0110

CORRESPONDING AUTHOR:

Andrew P. VanDemark, Ph.D.

KEYWORDS:

X-ray crystallography, structure determination, coiled-coil, protein, Rho-kinase, Shroom

SHORT ABSTRACT:

We describe a framework incorporating straightforward biochemical and computational analysis to guide the characterization and crystallization of large coiled-coil domains. This framework can be adapted for globular proteins or extended to incorporate a variety of high-throughput techniques.

LONG ABSTRACT:

Obtaining crystals for structure determination can be a difficult and time consuming proposition for any protein. Coiled-coil proteins and domains are found throughout nature, however, because of their physical properties and tendency to aggregate, they are traditionally viewed as being especially difficult to crystallize. Here, we utilize a variety of quick and simple techniques designed to identify a series of possible domain boundaries for a given coiled-coil protein, and then quickly characterize the behavior of these proteins in solution. With the addition of a strongly fluorescent tag (mRuby2), protein characterization is simple and straightforward. The target protein can be readily visualized under normal lighting and can be quantified with the use of an appropriate imager. The goal is to quickly identify candidates that can be removed from the crystallization pipeline because they are unlikely to succeed, affording more time for the best candidates and fewer funds expended on proteins that do not produce crystals. This process can be iterated to incorporate information gained from initial screening efforts, can be adapted for high-throughput expression and purification procedures, and is augmented by robotic screening for crystallization.

INTRODUCTION:

Structure determination via x-ray crystallography has made fundamental contributions to every field of modern biology; providing an atomic view of the macromolecules that support life and how they interact with one another in a variety of contexts; allowing us to understand the mechanisms that cause disease and providing opportunities to rationally design drugs to treat disease. Crystallography has long been the dominant experimental technique for determining macromolecular structure, and currently accounts for 89.3% of the structural database (www.rcsb.org). This technique has many advantages, including the potential for very high resolution, the ability to visualize macromolecules with a broad range of sizes, relatively easy data collection, and the opportunity to visualize how the macromolecule interacts with solvent as well as ligands.

Despite numerous technological improvements in recombinant protein expression^{1,2}, purification³, and molecular biology used to generate these systems⁴, **the single biggest**

obstacle in the crystallographic process remains the ability to grow diffraction quality crystals.

This has been especially true for proteins which contain large coiled-coil domains. It has been estimated that as much as 5% of all amino acids are found within coiled-coils^{5,6}, making this a very common structural feature⁷, yet these proteins are often more difficult to purify and crystallize than globular proteins⁸⁻¹⁰. This is further compounded by the fact that coiled-coil domains are often found within the context of a larger protein, therefore correctly predicting the boundaries of these domains is critical to avoid the inclusion of unstructured or flexible sequence that is often detrimental for crystallization.

Here we present a conceptual framework combining web-based computational analyses with experimental data from the bench, to help guide users through the initial stages of the crystallographic process including: how to select protein fragment(s) for structural studies, and how to prepare and characterize protein samples prior to crystallization attempts. We focus our analysis on two proteins containing large coiled-coil domains, Shroom (Shrm) and Rho-kinase (Rock). These proteins were chosen as they both contain coiled-coil domains and are known to form a biologically relevant complex¹¹⁻¹⁶. Shroom and Rho-kinase (Rock) are predicted to contain ~200 and 680 residues of coiled-coil respectively, many portions of which have been characterized structurally¹⁷⁻²⁰. The method described here provides a streamlined workflow to quickly identify fragments of coiled-coil containing protein that will be amenable for crystallization, however, the techniques described can easily be adapted for most protein or protein-complexes or modified to incorporate high-throughput approaches as available. Lastly, these methods are generally inexpensive and can be performed by users at nearly all experience levels.

PROTOCOL:

Note: A diagram of the conceptual framework or workflow is described in **Figure 1** for reference. The protocol can be broken down into four stages: computational or sequence based predictions, protein expression and purification, biochemical characterization, and crystallization. The examples shown analyze Shroom SD2 domains and/or Shroom-Rock complexes, but can be utilized with any protein.

1. Use established Web-based tools to generate computational predictions of coiled-coil domain boundaries.

1.1. Collect an evolutionarily diverse set of sequence homologs.

1.1.1. Go to www.uniprot.org and type in Shroom in the upper search bar.

1.1.2. Select sequences to download by checking the box next to their accession number. Sequences with a star indicate sequences reviewed by Uniprot and are generally more reliable. Take care to ensure that all sequences are complete and accurate.

1.1.3. Save the selected sequences by clicking the Download button.

1.1.4. Align the collection of Shroom sequences using Clustal-Omega²¹ (<http://www.ebi.ac.uk/Tools/msa/clustalo/>). Click the “Browse” button to select the file with the Shroom sequences and then push Submit.

1.1.5. After the alignment is complete, click the “Download Alignment File” button.

1.1.6. Open the multiple sequence alignment generated in 1.1.5 using Jalview (File|Input Alignment|From file). Within the new alignment window, color by identity (Color|Percent Identity).

1.2. Calculate predictions of secondary structure, predictions of flexible or disordered sequence, and predicted coiled-coil regions within the protein(s) of interest.

1.2.1. Go to <http://bioinf.cs.ucl.ac.uk/psipred/>. Copy and Paste the Shroom sequence into the Input sequence box. Click on the DISOPRED3 check box to include this analysis. Input an identifier and press “Predict”.

Note: This analysis may take a couple of hours to complete. Since Shroom sequences are quite large, the sequences may need to be split into blocks of less than 1,000 amino acids to fit within the size constraint of the webserver. When analyzing Shrm2, it is recommended that the C-terminal 1,000 amino acids are used as this section contains the Shrm SD2 domain which is known to contain coiled-coil regions. When repeating this analysis with other proteins, it is recommended to use the full-length protein sequences when possible. If that is not an option, use the largest fragment possible or dissect the sequence based on known biochemical or functional data.

1.2.2. Go to http://gpcr.biocomp.unibo.it/cgi/predictors/cc/pred_cchmm.cgi, to calculate Coiled-Coil predictions. Copy and Paste the sequence into the Sequence Box and click Submit.

1.3. Combine the results of steps 1.1 to 1.2.2 into a single comprehensive annotation of the Shroom sequence.

Note: It is highly encouraged to also include any and all relevant information that can be gleaned from the literature or other sources about protein function or purification at this stage.

1.4. Using this comprehensive annotated sequence, predict domain boundaries (or a series of possible boundaries) for the protein, trying to maximize conservation and predicted structural features while minimizing the amount of disordered or flexible sequence. If known, the resulting protein should retain the functional properties of interest.

2. Express and purify proteins with the domain boundaries identified in Section 1.

Note: The goal of this section is to use a series of quick and easily quantifiable assays to screen hypothetical domain boundaries generated in Section 1.

2.1. Using standard molecular biology techniques, generate an expression plasmid with the desired coding sequence in frame within the His₁₀-mRuby2-XH2 plasmid (See **Figure 3** for the vector map and additional details).

2.2. Test expression levels for each expression plasmid using BL21(DE3) *E. coli* or other suitable expression strain in autoinduction media¹ at room temperature for 18-24 h.

2.2.1. Transform expression plasmids as well as an empty plasmid control into BL21(DE3) following the instructions that came with the cells or using robust transformation protocol, such as the one here (<https://www.addgene.org/plasmid-protocols/bacterial-transformation/>).

2.2.2. From the freshly transformed plate, pick a single colony and grow a 5 mL starter culture at 37 °C overnight in Lysogeny Broth (LB) media with 34 µg/mL kanamycin.

2.2.3. The following day, pellet the culture and wash the pellet with fresh LB.

2.2.4. Add the starter culture to 50 mL of autoinduction media with 34 µg/mL kanamycin. Allow the culture to grow to saturation at either room temperature or 37 °C. Typically, grow for ~18-24 h.

2.2.5. Pellet cells and freeze the resulting cell pellets at -80 °C indefinitely prior to purification.

2.2.6. Compare whole cell extracts from each expression strain and the empty vector control by SDS-PAGE to determine the strain that most efficiently produces the desired fusion protein. For His₁₀-mRuby2-Shroom SD2 fusion proteins, run 10% SDS-PAGE gels at 180 V for ~50 min or until the dye front reaches the bottom of the gel²².

2.2.7. Stain gel with Commassie Blue to visualize total cellular proteins within each strain²³.

2.3. Perform an initial affinity chromatography step on each strain that successfully expressed mRuby2-fusion protein. Typically, perform purification steps 2.3.2-2.3.7 at room temperature, unless the protein will benefit from altered conditions such as purification at 4 °C.

2.3.1. Thaw cell pellets from step 2.2.5.

2.3.2. Resuspend each cell pellet in 1.5 mL of lysis buffer (10% glycerol, 500 mM NaCl, 40 mM imidazole, 20 mM Tris pH8.0, 1 mM beta-mercaptoethanol). Supplement the lysis buffer with protease inhibitors as appropriate.

2.3.3. Add 30 µL of 10 mg/mL lysozyme and incubate at room temperature for 20 min. Sonicate following the instructions for the instrument being used.

2.3.4. Transfer into a 1.5 mL tube and centrifuge in a table top centrifuge for 30 min at 14,000 x g to pellet insoluble material or unlysed cells. Save both supernatant and pellet for subsequent

analysis via SDS-PAGE.

2.3.5. Perform nickel affinity purification, incubating the soluble fraction with 100 μL of Ni-NTA beads. Incubate the beads with soluble lysate for 5-10 min, inverting several times to mix beads.

2.3.6. Centrifuge at 800 x g for 30 s in a tabletop centrifuge to pellet the beads. Follow this by washing the pellet 3-5 times with lysis buffer to clean off non-specific contaminants.

2.3.7. Elute Ruby fusion protein from the beads with lysis buffer supplemented with 1 M imidazole.

2.3.8. Use SDS-PAGE to compare the behavior of His-mRuby2-Shroom proteins in the “quick and dirty” purification above.

3. Characterize protein sample to identify those with advantageous properties

3.1. Use a spectrophotometer set at 280 nm to measure the concentration of the Ruby fusion protein, and then assess the homogeneity of the sample by loading 1-5 μg of fusion protein onto a native PAGE gel²⁴. Run the 10% Native PAGE gel at 4 $^{\circ}\text{C}$ for 140 min at 175 V.

3.1.1. Image the native PAGE using an imager equipped to visualize fluorescence, observing where the mRuby-tagged fusion migrates in this assay.

Note: Be careful to observe fusion protein that is stuck in the well as this protein is likely aggregated. If a fluorescence imager is not available, one can often visualize and image concentrated samples of Ruby tagged protein under a black light or with a UV light box.

3.2. Perform limited proteolysis to identify stably folded domains. Incubate 95 μL of Ruby-Shrm SD2 fusion at ~ 1 mg/mL with 5 μL of 0.025% Subtilisin A.

3.2.1. Sample the reaction at time points of 0, 0.5, 2, 5, 15, 60, and 120 min, removing 10 μL from the reaction for each time point and visualizing the progress of the reaction via SDS-PAGE using a 15% acrylamide gel.

3.2.2. Stain with Coomassie Blue as in step 2.2.7 and evaluate whether a protease resistant species can be identified.

3.3. Integrate data from the purification efficiency, behavior in native PAGE, and limited proteolysis on the partially purified mRuby2-Shroom fusion proteins into a comprehensive assessment of the overall behavior of these proteins in solution.

3.3.1. (Optional) If a suitable functional assay is available, check for activity at this point.

4. Producing high quality crystals of the coiled-coil SD2 domain from Shroom.

Note: All steps within section 4.1 are performed at room temperature unless the protein would

benefit from purification at a different temperature, usually 4 °C.

4.1. Using the 50 mL growths as a rough estimate of expression and purification potential, perform large scale expressions of mRuby2-Shroom SD2 with the goal of achieving 5-20 mg of completely purified sample. Typically 2 L of culture provides adequate starting material. After growth pellet cells by centrifugation at 8,000 x *g* for 10 min.

4.1.1. Resuspend the pellet from the 2 L growth in lysis buffer as before, using ~2 mL of lysis per gram of frozen cell pellet if using lysozyme for lysis. Alternatively, resuspend at ~8 mL/g of pellet if using a homogenizer or French press. Pellet cellular debris via centrifugation at 30,000 x *g* for 30 min.

4.1.2. Batch bind the soluble fraction from 4.1.1 using 10 mL of Ni-NTA resin. Pour into appropriate gravity column and allow unbound proteins to drain off.

4.1.3. Wash resin 3-5 times with 40 mL of lysis buffer, followed by a wash with lysis buffer supplemented to 1 M NaCl.

4.1.4. Wash resin with 40 mL of lysis buffer supplemented with 80 mM imidazole.

4.1.5. Elute the Ruby-Shroom fusion protein with 40 mL of lysis buffer supplemented to 1 M imidazole. Manually fractionate the eluted protein into 4-10 mL fractions.

4.1.6. Confirm fractions containing Ruby-Shroom fusion protein using 10% SDS-PAGE.

4.1.7. Dialyze appropriate fractions (typically fractions 2-4) into 8% glycerol, 250 mM NaCl, 15 mM imidazole, 20 mM Tris pH8.0, 1 mM β-ME, using 6-8 kDa MWCO dialysis tubing. Add 1 mg of TEV protease for every 25-50 mg of fusion protein. Dialyze overnight at room temperature with slow stirring.

4.1.8. Repeat nickel affinity purification steps 4.1.2. to 4.1.6. The Shroom SD2 domain should now remain in the unbound fraction while the His10-mRuby2 will remain bound to the resin and will be found in the elution fractions. Confirm this using 12% SDS-PAGE staining with Coomassie Blue.

4.1.9. Dialyze fractions containing Shroom SD2 domain into 8% glycerol, 100 mM NaCl, 20 mM Tris pH 8.0, 5 mM beta-mercaptoethanol buffer overnight.

4.1.10. Perform anion exchange chromatography²⁵ using an FPLC, and eluting with a NaCl gradient from 0.1-1.0 M NaCl. Analyze fractions using 12% SDS-PAGE.

4.1.11. Using a spin concentrator (MWCO of 10 kDa or greater depending on the protein being studied), concentrate peak fractions to ~ 10 mg/mL, and then perform size exclusion chromatography²⁶, analyzing peak fractions via 12% SDS-PAGE.

4.1.12. Pool peak fractions and dialyze into 20 mM Tris pH 8.0, 50 mM NaCl, 2% glycerol, 1 mM β -ME, and concentrate to 10 mg/mL prior to crystallization.

Optional: During this step, remove 5 μ L samples at concentrations of 1, 2, 5, and 10 mg/mL during the course of concentrating the sample. Run a native PAGE loading 2-5 μ L of each sample to look at the behavior of the sample during this step.

4.2. Screen a small array of 12 conditions to identify an optimal protein concentration for crystallization trials. The composition of these conditions is described in **Figure 7**.

4.2.1. Using 24-well sitting drop crystallization trays, perform crystallization trials using the vapor diffusion method, pipetting 500 μ L of each of the 12 conditions into separate wells followed by drops that initially contain 1 μ L of well solution and 1 μ L of protein sample on the coverslips. Please see²⁷ for additional information on this technique.

4.2.2. Quickly seal the tray with clear tape and move the tray to a suitable temperature controlled environment that is vibration free. The temperature used can vary, but 4 °C, 16 °C, and 20 °C are quite common.

4.2.3. Examine the drops in the trays over the next 3 days using a microscope at up to 100X magnification. At the end of the 3 day period, score each drop as containing no precipitation (clear), light precipitation, heavy precipitation (brown), or crystals. A suitable protein concentration should contain no more than 6 heavy precipitations.

4.3. Using the protein concentration identified in 4.2, screen a broad range of commercially available crystallization screens. The use of a liquid handling or crystallization robot greatly speeds up this process while also minimizing error in the drops. It requires far less protein as well, allowing the user to screen more conditions with a single sample.

4.4. Improve initial conditions identified from broad screens by systematically varying each of the variables within the crystallization drop using 24-well screening trays as before.

REPRESENTATIVE RESULTS:

A diagram depicting the workflow utilized in this system is shown in **Figure 1** and includes three main stages. Computational analysis of the sequence is utilized to develop hypotheses about the domain boundaries of the coiled-coil protein of interest. An example of an annotated analysis of the Shrm2 SD2 domain is shown in **Figure 2**. In this diagram, the goal was to identify possible domain boundaries for a conserved domain at the C-terminus of the cytoskeletal regulator Shroom called SD2. From this analysis was three distinct sets of hypothetical domain boundaries were generated containing coiled-coil fragments that spanning the entire conserved SD2 or minimal fragments near the C-terminus which ended up as the best candidates for crystallization. Candidates identified from the sequence analysis are then quickly tested in small scale using a protein fusion with mRuby2 (**Figure 3**) for efficient analysis. Representative small

scale (50 mL of culture) purifications from two His₁₀-mRuby2-tagged proteins are shown in **Figure 4**. In this figure, the behavior of an insoluble protein is readily apparent as compared to its soluble counterpart. Poorly expressing or insoluble protein fusions are easily and quickly identified in this manner. Biochemical analyses of protein fragments by limited proteolysis are shown in **Figure 5** for a variety of fragments using either the Ruby system described or with isolated and purified Shroom SD2 domains. In **Figure 5A**, two variants of mouse Shrm SD2 corresponding to hypothetical domain boundaries #2 and #1 in **Figure 3** were digested using a gradient of protease concentration from (0-1.0%) for 30 min at room temperature. Both of these were effectively degraded into a host of smaller products at moderate enzyme concentrations. **Figure 5B** shows the same experiment performed using hypothetical boundary #3 from *Drosophila* Shrm SD2. This protein did crystallize and its structure has been described¹⁹. Proteolytic analysis can also be useful when examining Ruby-fusions as generated from the protocol above. As shown in **Figure 5C**, a Ruby fusion protein with human Shrm2 SD2 (1427-1610) was digested with a high concentration (0.025%) of the non-specific protease Subtilisin at room temperature for the indicated time points. Here the linker between Ruby and Shrm was immediately cleaved as would be expected. Additionally, minor products were formed indicating this protein has two other protease sensitive regions, however, the products of degradation which were produced within 2 min remained largely intact throughout the rest of the experiment indicating the protein is actually quite stable.

A complementary approach is shown using native PAGE analysis in **Figure 6**. In **Figure 6A**, Ruby-tagged human Shrm SD2 (1427-1610) as well as protein containing the indicated point mutations within Shrm are analyzed by native PAGE. In this experiment, the wild-type protein (which forms crystals) runs as two distinct bands, while the three mutants which do not crystallize have dramatically different behavior. To demonstrate that the system can also be useful on protein complexes, a variety of Shroom-Rock complexes were analyzed by native PAGE in **Figure 6B**. In this case, the same fragment of human Shrm2 SD2 (1427-1610) was used to help clarify the analysis, while different fragments of human Rock were utilized. This approach suggested that complexes formed using Rock 700-906 and 746-906 had multiple species, were smeary, and less homogenous. Complexes utilizing 788-906 were improved, albeit not dramatically, and this species was able to crystallize, although crystals took many weeks to form and contained degraded Rock protein. Complexes generated using Rock 834-913 formed a single and more uniform species on the gel and readily crystallized overnight. **Figure 7** shows a set of common crystallization conditions that are used to inform on the behavior of the protein sample in crystallization trials, and could be used generally with any protein. Ideally, a mix of clear and precipitating conditions will be obtained. Proteins that do not form precipitates require high concentrations or more stringent buffering conditions while those that precipitate in many conditions should be used at a lower protein concentration or with buffering conditions that promote protein solubility.

Figure 1: Workflow Diagram.

A generalized diagram depicting the integration of computational sequence analysis and biochemical and other wet lab techniques into a comprehensive strategy for delineating domain boundaries and identifying protein fragments for crystallization.

Figure 2: Annotated sequence analysis for the coiled-coil SD2 domain from Shroom.

An overlay of computational analyses for the Shroom SD2 domain, including a multiple sequence alignment generated by CLUSTAL omega and colored by sequence identity within Jalview (Step 1.1). Also included are predicted secondary structure, disordered sequence predictions, and coiled-coil predictions of the Shroom SD2 domain (Step 1.2). Hypothetical domain boundaries (Step 1.3) are indicated as are the observed boundaries and secondary structure elements as revealed by subsequent crystallographic analysis¹⁹.

Figure 3: Diagram of the His₁₀-mRuby2-expression system.

A) Schematic of the expression vector His₁₀-mRuby2-XH2 vector used in this study. B) Diagram of the multiple cloning site from this vector. Protein coding sequences are typically inserted into this vector via BamHI and EcoRI cloning sites. The extreme C-terminus of the mRuby2 protein is shown in red, the TEV protease cleavage site is indicated with brackets and with the site of cleavage shown as a red triangle. A linker sequence between the mRuby2 and the TEV site is shown in cyan.

Figure 4: Representative small scale purifications of two mRuby2 tagged fusion proteins.

A) An image of samples of bacterial culture expressing Ruby Shrm SD2 or an unrelated Ruby fusion protein known to be insoluble are pictured. A separate culture expressing a protein without a Ruby-tag is shown for comparison, B) The soluble fraction from the cultures above were imaged following lysis and centrifugation at 30,000 x g for 30 min, demonstrating the visualization of soluble Ruby-Shrm SD2 C) Image of the Ni-NTA beads after binding and subsequent washing steps indicating that Ruby-Shrm SD2 is being immobilized onto the beads. D) Samples of washing and elution steps as described in steps 2.3.6 and 2.3.7 demonstrate that the Ruby-Shrm SD2 fusion remains bound to the resin while in the presence of up to 80 mM imidazole and is effectively eluted off the column with 1 M imidazole elution buffer.

Figure 5: Limited proteolysis of candidate SD2 domains from different Shroom proteins.

AA comparison of four SD2 domains from various Shroom proteins. A and B) The indicated Shrm SD2 fragments were incubated with a concentration gradient of the protease trypsin from 0 to 1.0% and the results analyzed by SDS-PAGE. The relationship of that protein fragment with the hypothetical boundaries are indicated. C) SDS-PAGE analysis of limited proteolytic digestion of His₁₀-mRuby2-Shroom SD2 fusion protein using the time course method described in the protocol. The reaction occurred with 0.025% trypsin at room temperature. Digestion of the linker between Ruby and Shroom SD2 is rapid and serves as an internal control. A presumed degradation product that co-purifies with the His₁₀-mRuby2-Shroom SD2 fusion protein is indicated (*).

Figure 6. Observing changes in protein behavior using native gel.

A) 10% Native PAGE demonstrating the effect of a mutant that changes the properties of mRuby2-Shroom SD2. Under these conditions Shrm SD2 runs as two discrete bands, while indicated point mutants within the SD2 display a range of aberrant migration patterns. B) A comparison of Shroom SD2-Rock complexes formed using different versions of Rock and

analyzed by native PAGE. Complexes between Shroom SD2 and the indicated fragments of Rock kinase (both coiled-coil proteins) were resolved by native PAGE. Crystals were obtained for the complex containing Rock 788-906 after many weeks but complex containing Rock 834-913 crystallized rapidly.

Figure 7. Quick primary screen for crystallization.

A) A quick screen of common crystallization conditions is used to assess the behavior of the protein sample in crystallization trials. B) Examples of the simple scoring matrix to assess crystallization drops.

DISCUSSION:

The protocol described here is designed to help the user identify domain boundaries within large coiled-coil proteins to facilitate their crystallization. The protocol relies on a holistic incorporation of a variety of data from computational predictions and other sources to generate a series of potential domain boundaries. These are followed by a set of biochemical experiments which are quick and inexpensive, and are used to further refine these initial hypotheses. Using this approach, the user could quickly eliminate potential protein fragments that are undesirable, and focus more attention on better candidates, thereby improving the prospects of obtaining crystals.

There are many important steps within this technique, however, none as critical for the production of crystals as the development of the initial set of hypothetical domain boundaries. This step incorporates a variety of computational approaches, as well as information obtained from the literature or functional data when available. Care should be taken to avoid using the strategy to hone immediately down to the single “best” solution as there is currently no method in place to attach a quantifiable confidence value to any of the predictions. Instead, it is best used as a method to quickly identify a small set of possible domain boundaries which need to be experimentally verified.

The properties of coiled-coil proteins which can be analyzed with this protocol are quite broad. From a computational perspective, the strength of coiled-coil predictions is limited below 20 amino acids, and as mentioned in step 1.2.1, coiled-coil regions larger than 1,000 amino acids would need to be split into multiple sections for analysis by DISOPRED. We view this later limitation as temporary as it is imposed by the webserver and may change as the method is upgraded in the future. The subsequent biochemical analysis however, can suffer in various ways. First, internal loops or regions hypersensitive to proteases may make the sample appear to be less stable than it actually is. Stable proteins that have cleaved loops or are otherwise nicked by the protease should still give a stable appearance on native PAGE, which is why it is recommended that the user explore both strategies. Native PAGE may be difficult for some proteins, however, either because they are very long and migrate slowly into gel or because their particular charge may make them run the opposite direction out of the gel entirely. In this cases, it may be helpful to explore different buffering conditions for the native PAGE gel system.

While the focus of the work presented here has been on large coiled-coil containing proteins,

this protocol can be utilized for almost any protein with very few adaptations. The primary addition for globular proteins would be the addition of domain prediction software such as pDomTHREADER²⁸ or DomPred²⁹ to look for domain boundaries, and tertiary structure predictions such as Phyre2³⁰ to enhance the predictive power of the sequence analysis. Additionally, there are many algorithms available for performing secondary structure predictions and disordered predictions, and the inclusion of additional algorithms could be helpful. Globular proteins often possess enzymatic activity or other functional readouts that would provide important additional information during target selection. Further, moderate or high-throughput techniques can be incorporated as appropriate. For example, inexpensive systems for 1-2 mL cultures and metal affinity purifications in 96-well formats are readily available³¹. Lastly, the use of robotics for setting up large numbers of crystallization experiments using minimal sample is becoming routine, but efficient operation of robotic systems is predicated on the behavior of well characterized protein samples. Additional modifications to this protocol could include sampling a variety of affinity tags. Many different fluorescent tags are available, or His-, GST-, Thioredoxin-, Strep-, and MBP- are among dozens of available options if a fluorescent tag is not needed or helpful.

When performing this procedure, the user should be mindful of the effect that the mRuby2 tag might have on the users' protein of interest. Anecdotal evidence from using this tag on a variety of different fusions supports the fact that mRuby2 will sometimes bind quite tightly to the protein of interest, remaining bound through multiple chromatographic steps. This behavior is obviously undesirable, but unintended Ruby complexes can usually be separated and removed chromatographically. It is unclear whether this is a chaperone-like behavior as has been observed for MBP³².

After obtaining crystals, there are still many challenges that are commonly faced with coiled-coil proteins that are not addressed in this protocol. The most common is poor diffraction quality, either due to imperfectly formed lattices or anisotropic diffraction. There are tools in place to assist with anisotropic diffraction³³, and these have been critical for solving some coiled-coil structures^{18,20}. Many crystal pathologies are unfortunately difficult to overcome quickly, therefore it is often prudent to search for additional crystal forms with enhanced diffraction properties. This is facilitated by robotic screening of thousands of conditions. Alternatively there are many post-crystallization techniques to improve diffraction quality such as dehydration, or seeding³⁴.

ACKNOWLEDGMENTS:

This work was supported by grant NIH R01 GM097204 (APV and JDH). Funding for JHM was supplied by an HHMI Undergraduate Research Summer Fellowship.

DISCLOSURES:

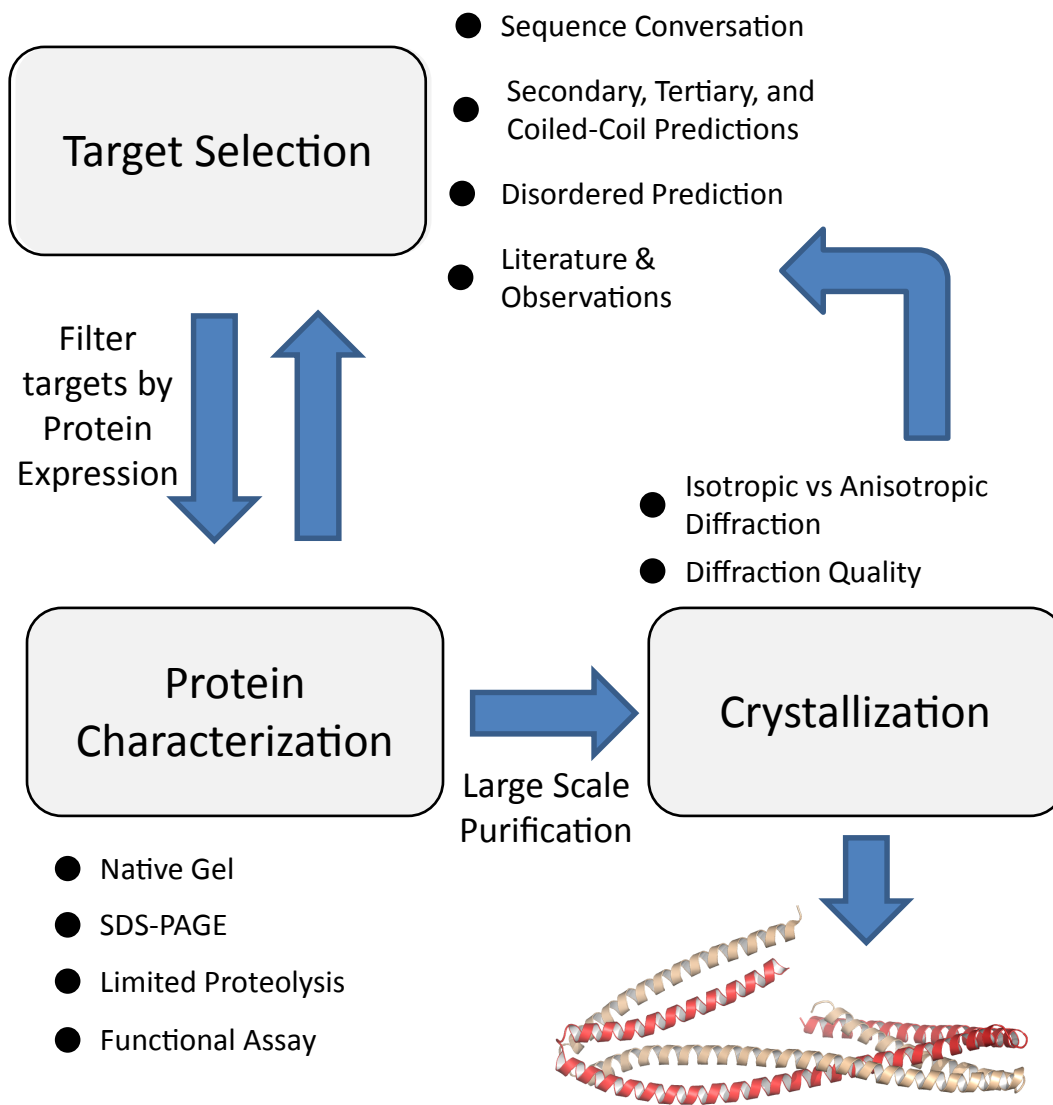
The authors have nothing to disclose.

REFERENCES

- 1 Studier, F. W. Stable expression clones and auto-induction for protein production in *E. coli*. *Methods Mol Biol.* **1091** 17-32, doi:10.1007/978-1-62703-691-7_2 (2014).
- 2 Studier, F. W. & Moffatt, B. A. Use of bacteriophage T7 RNA polymerase to direct selective high-level expression of cloned genes. *J Mol Biol.* **189** (1), 113-130, doi:doi:10.1016/0022-2836(86)90385-2 (1986).
- 3 Chapman, T. Protein purification: pure but not simple. *Nature.* **434** (7034), 795-798, doi:10.1038/434795a (2005).
- 4 Gibson, D. G. *et al.* Enzymatic assembly of DNA molecules up to several hundred kilobases. *Nat Methods.* **6** (5), 343-345, doi:10.1038/nmeth.1318 (2009).
- 5 Lupas, A., Van Dyke, M. & Stock, J. Predicting coiled coils from protein sequences. *Science.* **252** (5009), 1162-1164, doi:10.1126/science.252.5009.1162 (1991).
- 6 Offer, G., Hicks, M. R. & Woolfson, D. N. Generalized Crick equations for modeling noncanonical coiled coils. *J Struct Biol.* **137** (1-2), 41-53, doi:10.1006/jsbi.2002.4448 (2002).
- 7 Lupas, A. N. & Gruber, M. The structure of alpha-helical coiled coils. *Adv Protein Chem.* **70** 37-78, doi:10.1016/S0065-3233(05)70003-6 (2005).
- 8 Hernandez Alvarez, B. *et al.* A new expression system for protein crystallization using trimeric coiled-coil adaptors. *Protein Eng Des Sel.* **21** (1), 11-18, doi:10.1093/protein/gzm071 (2008).
- 9 Slabinski, L. *et al.* The challenge of protein structure determination--lessons from structural genomics. *Protein Sci.* **16** (11), 2472-2482, doi:10.1110/ps.073037907 (2007).
- 10 Slabinski, L. *et al.* XtalPred: a web server for prediction of protein crystallizability. *Bioinformatics.* **23** (24), 3403-3405, doi:10.1093/bioinformatics/btm477 (2007).
- 11 Haigo, S. L., Hildebrand, J. D., Harland, R. M. & Wallingford, J. B. Shroom induces apical constriction and is required for hinge point formation during neural tube closure. *Curr Biol.* **13** (24), 2125-2137, doi:S0960982203009102 [pii] (2003).
- 12 Hildebrand, J. D. Shroom regulates epithelial cell shape via the apical positioning of an actomyosin network. *J Cell Sci.* **118** (Pt 22), 5191-5203, doi:10.1242/jcs.02626 (2005).
- 13 Dietz, M. L., Bernaciak, T. M., Vendetti, F., Kielec, J. M. & Hildebrand, J. D. Differential actin-dependent localization modulates the evolutionarily conserved activity of Shroom family proteins. *J Biol Chem.* **281** (29), 20542-20554, doi:10.1074/jbc.M512463200 (2006).
- 14 Bolinger, C., Zasadil, L., Rizaldy, R. & Hildebrand, J. D. Specific isoforms of drosophila shroom define spatial requirements for the induction of apical constriction. *Dev Dyn.* **239** (7), 2078-2093, doi:10.1002/dvdy.22326 (2010).
- 15 Farber, M. J., Rizaldy, R. & Hildebrand, J. D. Shroom2 regulates contractility to control endothelial morphogenesis. *Mol Biol Cell.* **22** (6), 795-805, doi:10.1091/mbc.E10-06-0505 (2011).
- 16 Das, D. *et al.* The interaction between Shroom3 and Rho-kinase is required for neural tube morphogenesis in mice. *Biol Open.* **3** (9), 850-860, doi:10.1242/bio.20147450 (2014).
- 17 Dvorsky, R., Blumenstein, L., Vetter, I. R. & Ahmadian, M. R. Structural insights into the

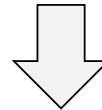
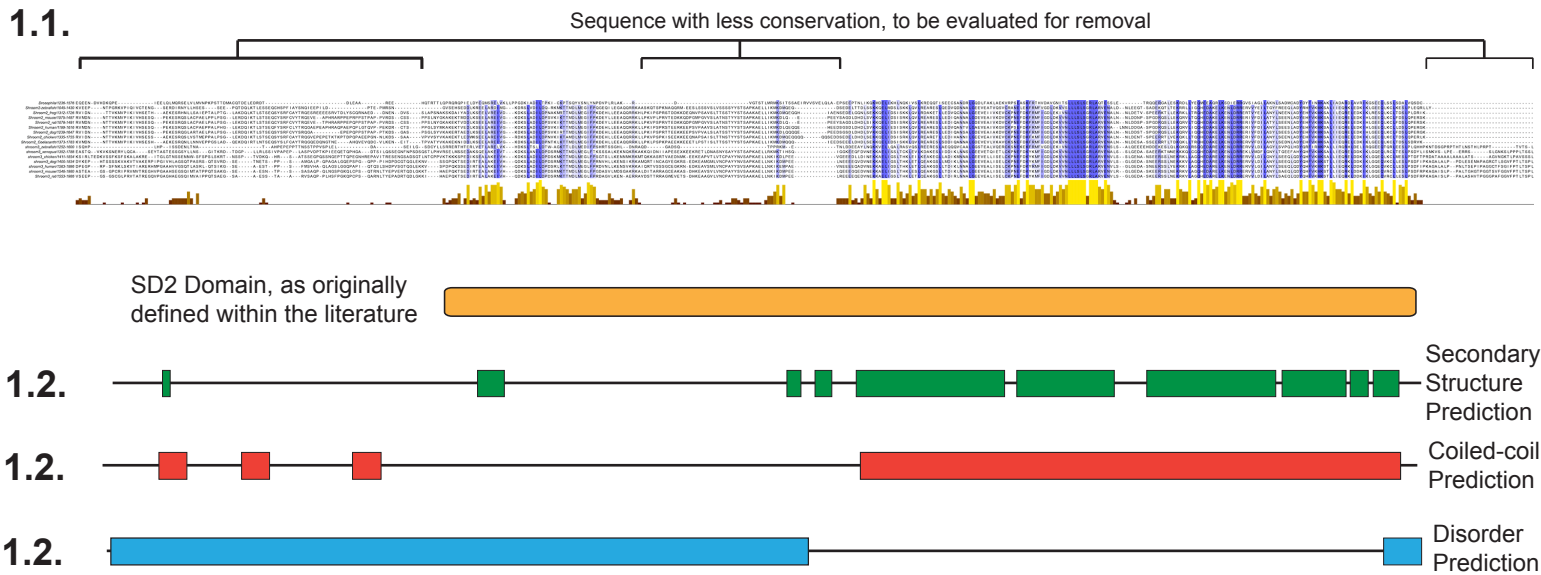
- interaction of ROCK1 with the switch regions of RhoA. *J Biol Chem.* **279** (8), 7098-7104, doi:10.1074/jbc.M311911200 (2004).
- 18 Mohan, S. *et al.* Structure of a highly conserved domain of Rock1 required for Shroom-mediated regulation of cell morphology. *PLoS One.* **8** (12), e81075, doi:10.1371/journal.pone.0081075 (2013).
- 19 Mohan, S. *et al.* Structure of Shroom domain 2 reveals a three-segmented coiled-coil required for dimerization, Rock binding, and apical constriction. *Mol Biol Cell.* **23** (11), 2131-2142, doi:10.1091/mbc.E11-11-0937 (2012).
- 20 Tu, D. *et al.* Crystal structure of a coiled-coil domain from human ROCK I. *PLoS One.* **6** (3), e18080, doi:10.1371/journal.pone.0018080 (2011).
- 21 Sievers, F. *et al.* Fast, scalable generation of high-quality protein multiple sequence alignments using Clustal Omega. *Mol Syst Biol.* **7** 539, doi:10.1038/msb.2011.75 (2011).
- 22 Shapiro, A. L., Vinuela, E. & Maizel, J. V., Jr. Molecular weight estimation of polypeptide chains by electrophoresis in SDS-polyacrylamide gels. *Biochem Biophys Res Commun.* **28** (5), 815-820, doi: 10.1016/0006-291X(67)90391-9 (1967).
- 23 Diezel, W., Kopperschlager, G. & Hofmann, E. An improved procedure for protein staining in polyacrylamide gels with a new type of Coomassie Brilliant Blue. *Anal Biochem.* **48** (2), 617-620, doi:10.1016/0003-2697(72)90117-0 (1972).
- 24 Wittig, I. & Schagger, H. Advantages and limitations of clear-native PAGE. *Proteomics.* **5** (17), 4338-4346, doi:10.1002/pmic.200500081 (2005).
- 25 Jungbauer, A. & Hahn, R. Ion-exchange chromatography. *Methods Enzymol.* **463** 349-371, doi:10.1016/S0076-6879(09)63022-6 (2009).
- 26 Yu, C. M., Mun, S. & Wang, N. H. Theoretical analysis of the effects of reversible dimerization in size exclusion chromatography. *J Chromatogr A.* **1132** (1-2), 99-108, doi:10.1016/j.chroma.2006.07.017 (2006).
- 27 Giege, R. A historical perspective on protein crystallization from 1840 to the present day. *FEBS J.* **280** (24), 6456-6497, doi:10.1111/febs.12580 (2013).
- 28 Lobley, A., Sadowski, M. I. & Jones, D. T. pGenTHREADER and pDomTHREADER: new methods for improved protein fold recognition and superfamily discrimination. *Bioinformatics.* **25** (14), 1761-1767, doi:10.1093/bioinformatics/btp302 (2009).
- 29 Marsden, R. L., McGuffin, L. J. & Jones, D. T. Rapid protein domain assignment from amino acid sequence using predicted secondary structure. *Protein Sci.* **11** (12), 2814-2824, doi:10.1110/ps.0209902 (2002).
- 30 Kelley, L. A., Mezulis, S., Yates, C. M., Wass, M. N. & Sternberg, M. J. The Phyre2 web portal for protein modeling, prediction and analysis. *Nat Protoc.* **10** (6), 845-858, doi:10.1038/nprot.2015.053 (2015).
- 31 Elsliger, M. A. *et al.* The JCSG high-throughput structural biology pipeline. *Acta Crystallogr Sect F Struct Biol Cryst Commun.* **66** (Pt 10), 1137-1142, doi:10.1107/S1744309110038212 (2010).
- 32 Bach, H. *et al.* Escherichia coli maltose-binding protein as a molecular chaperone for recombinant intracellular cytoplasmic single-chain antibodies. *J Mol Biol.* **312** (1), 79-93, doi:10.1006/jmbi.2001.4914 (2001).

- 33 Strong, M. *et al.* Toward the structural genomics of complexes: crystal structure of a PE/PPE protein complex from *Mycobacterium tuberculosis*. *Proc Natl Acad Sci U S A.* **103** (21), 8060-8065, doi:10.1073/pnas.0602606103 (2006).
- 34 Heras, B. & Martin, J. L. Post-crystallization treatments for improving diffraction quality of protein crystals. *Acta Crystallogr D Biol Crystallogr.* **61** (Pt 9), 1173-1180, doi:10.1107/S0907444905019451 (2005).

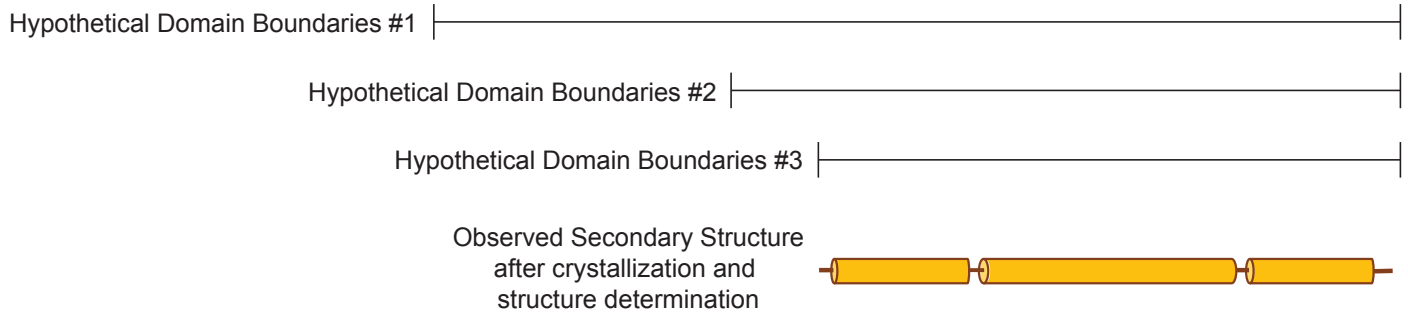


1. Target Selection

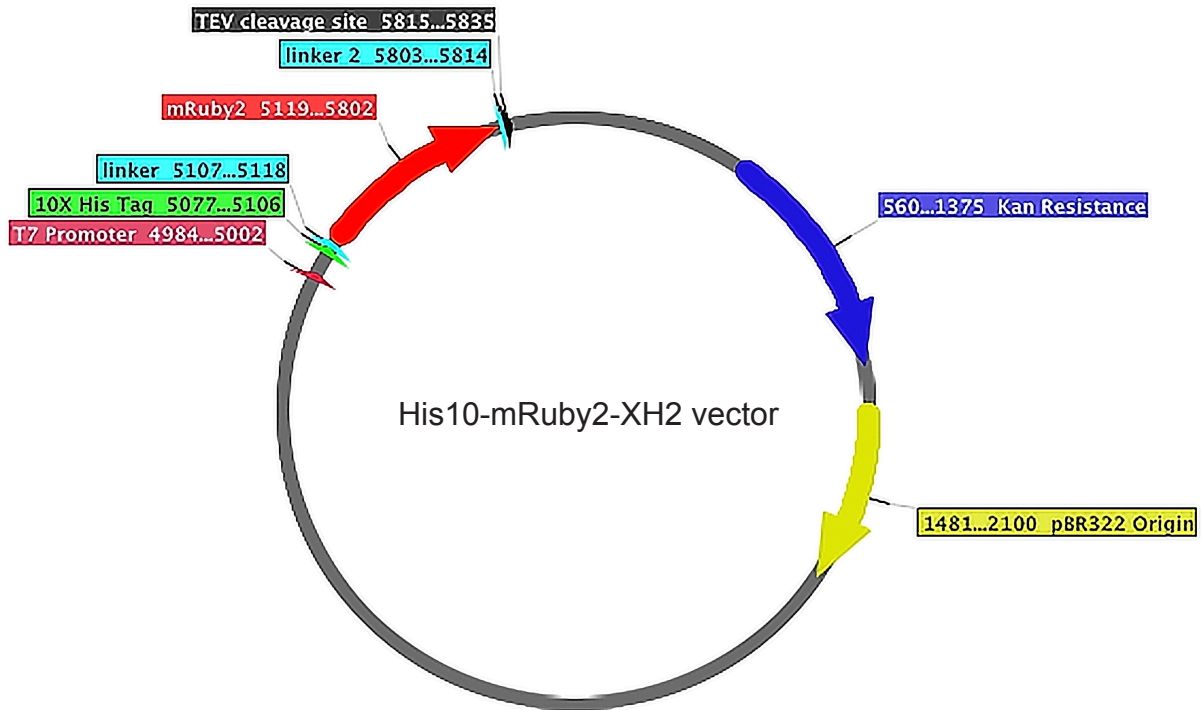
Multiple Sequence Alignment



1.3. Identify a collection of potential targets



A



B

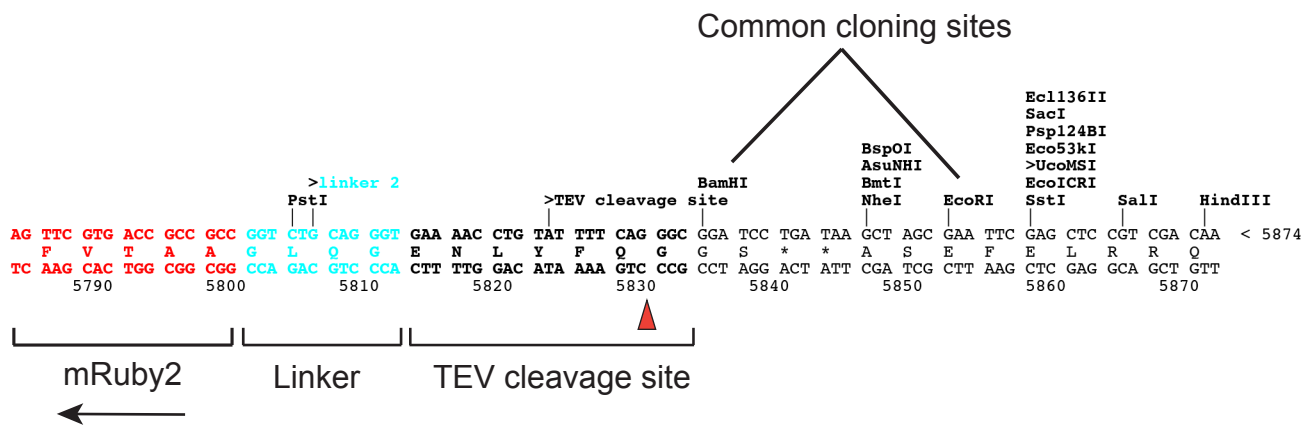
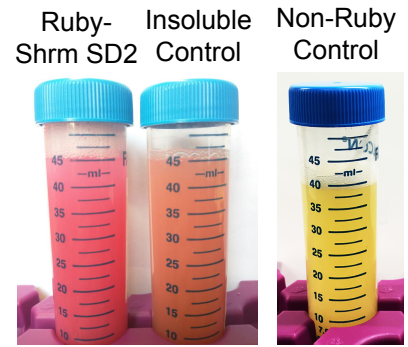


Illustration of Sample Purification of His₁₀-mRuby2-Shroom SD2

A**Step 2.3.1**

Protein Expression

- 1) Test many cell lines
- 2) Optimize media and growth conditions



Culture After Expression

**B****Step 2.3.2
thru 2.3.4**

Solubility

- 1) Resuspend in lysis buffer
- 2) Lyse with lysozyme/sonication
- 3) Centrifuge to remove insoluble protein

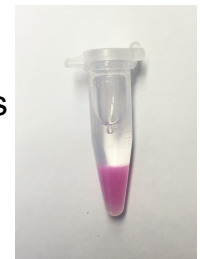
Ruby-Shrm SD2 Insoluble Control



Soluble Protein

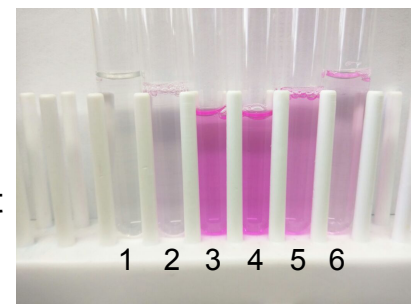
**C****Step 2.3.6**Immobilize on Ni
NTA beads

- 1) Incubate soluble fraction with beads
- 2) Wash extensively with lysis buffer
- 3) Pellet Beads

His-mRuby2-Shroom SD2
bound to Ni-NTA beads**D****Step 2.3.7**

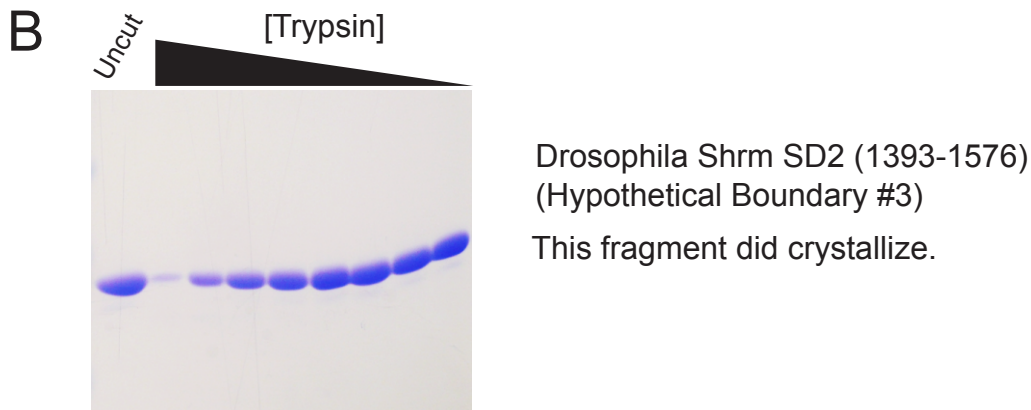
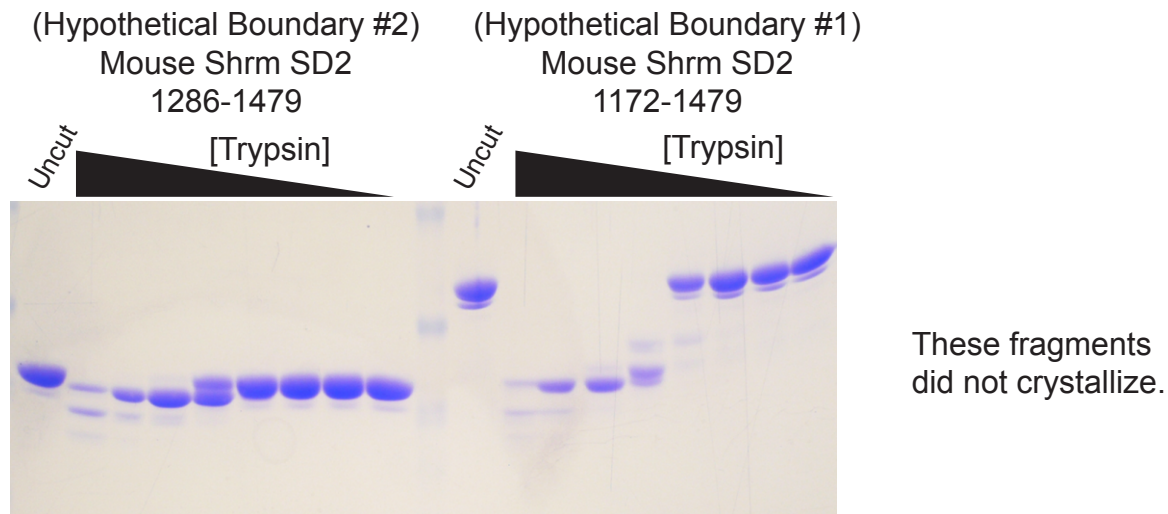
Elute from beads

- 1) Elute from beads
- 2) Optimize with Imidazole gradient if needed

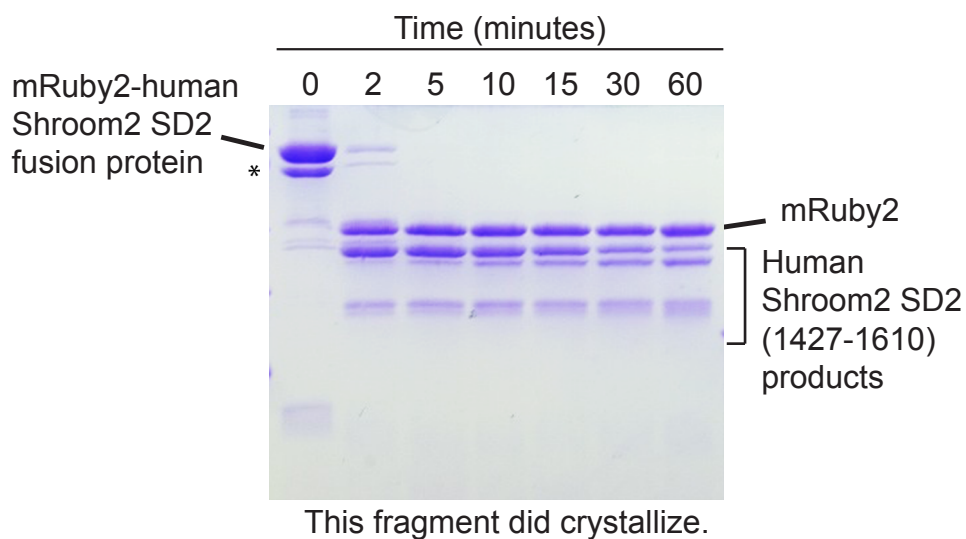


- 1) Lysis buffer wash
- 2) 80mM Imidazole wash
- 3-6) Elution 1-4

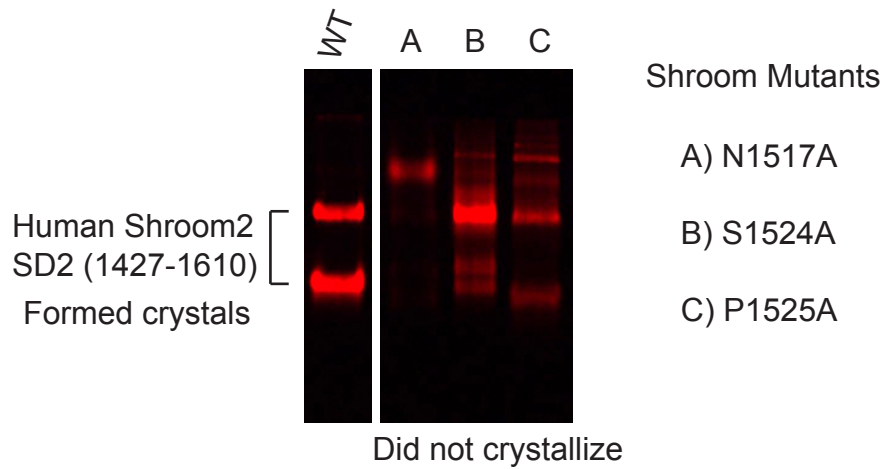
A Digestion of various Shrm SD2 fragments with trypsin



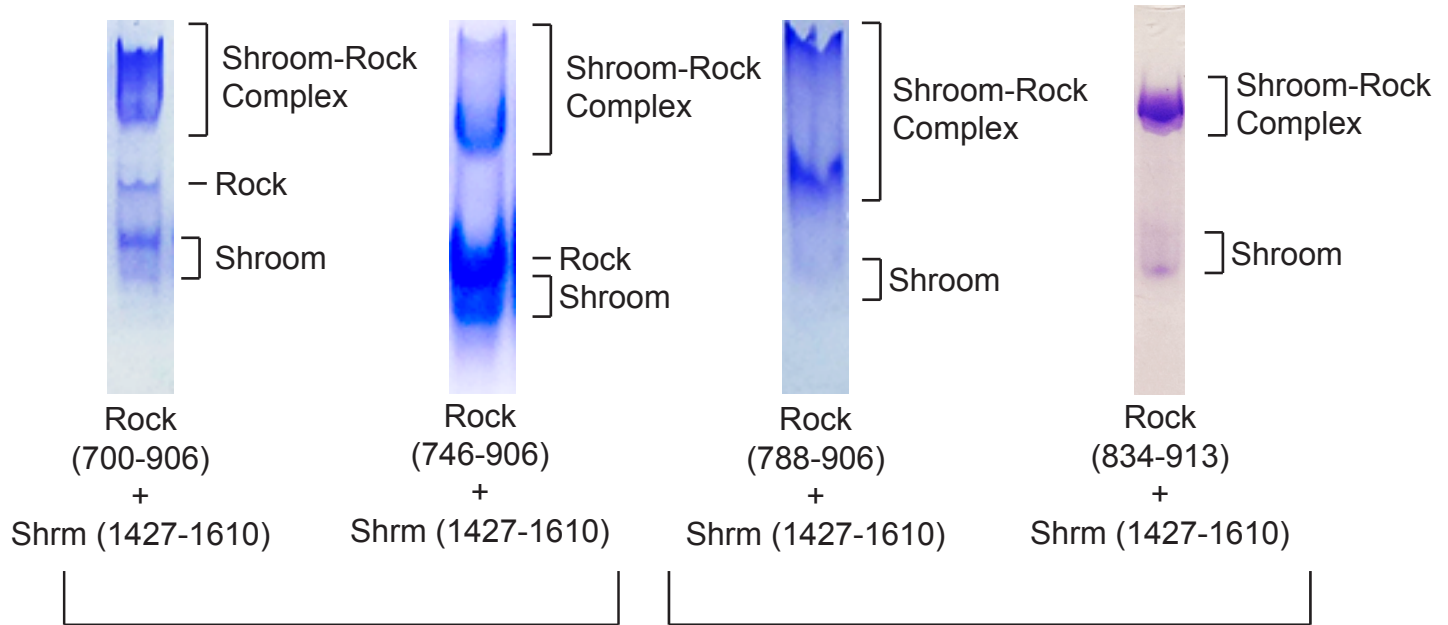
C Digestion of mRuby2-Shroom2 by nonspecific protease SubtilisinA



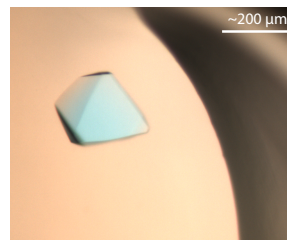
A Analysis of point mutants by native PAGE



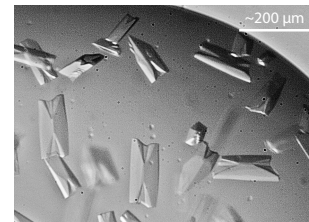
B Analysis of protein complexes by native PAGE



Did not crystallize



Crystals were very slow forming and contained degraded Rock protein

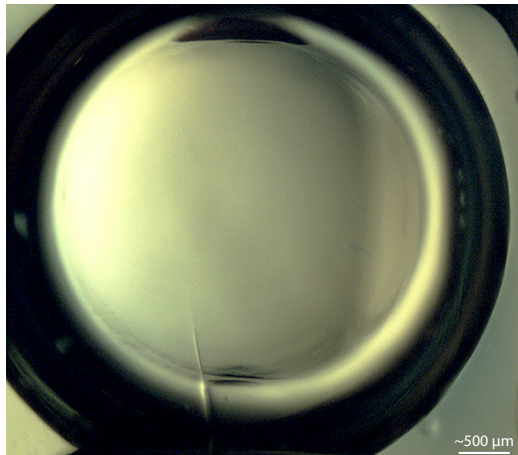


Crystallized readily

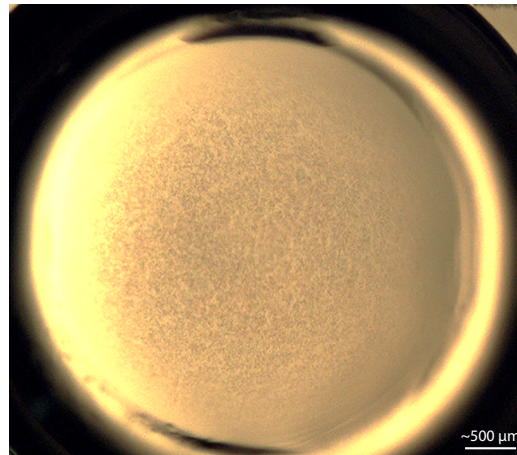
A Initial Crystallization Buffer Screen

0.1M Tris-HCl, pH 8.5 2.0M (NH ₄) ₂ SO ₄	30% PEG 3350 0.1M Tris-HCl pH 8.5 0.2M MgCl ₂	30% PEG 3350 0.1M NaOAc, pH 4.6 0.2M NH ₄ OAc	30% PEG 3350 0.1M Tris-HCl, pH 8.5 0.2M Li ₂ SO ₄	20% PEG 8000 0.1M Na Cacodylate, pH 6.5 0.2M MgOAc	30% PEG 8000 0.2M (NH ₄) ₂ SO ₄
8% PEG 8000 0.1M Tris-HCl, pH 8.5	0.1M Na HEPES, pH 7.5 1.4M Na Citrate	2% PEG 400 0.1M Na HEPES pH 7.5 2.0M (NH ₄) ₂ SO ₄	0.1M Na HEPES pH 7.5 1.5M Li ₂ SO ₄	30% PEG 4000	30% PEG 8000 0.1M Na Cacodylate, pH 6.5 0.2M NaOAc

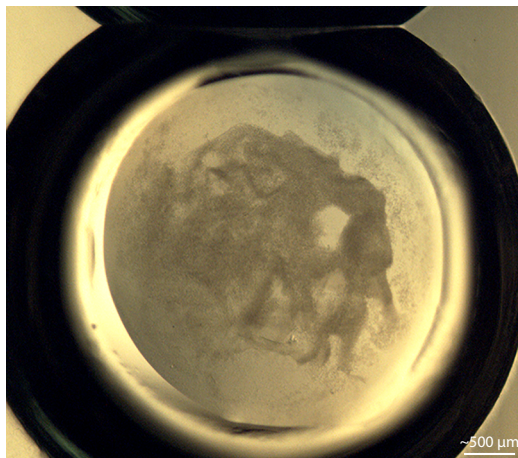
B



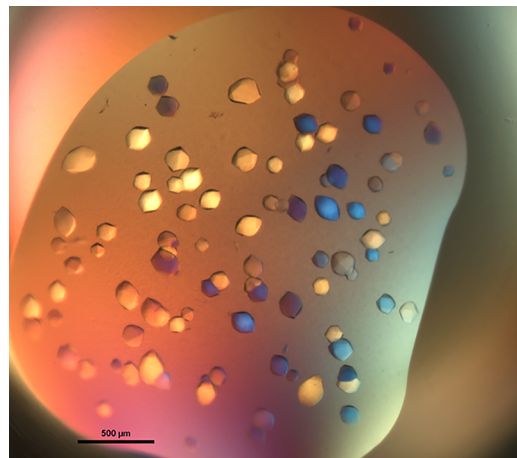
Clear



Light Precipitation



Heavy Precipitation



Crystals

Name of Reagent/ Equipment	Company	Catalog Number	Comments/Description
BL21(DE3) Rosetta	Emd Millipore	70954-3	
BL21(DE3) Star	ThermoFisher Scientific	C601003	
BL21(DE3) Codon Plus	Agilent Technologies	230245	
Lysozyme	Spectrum Chemical Mfg Corp	L3008-5GM	
Ni-NTA resin	Life Technologies	25216	
SubtilisinA	Spectrum Chemical Mfg Corp	S1211-10ML	
24 well Cryschem Plate	Hampton research	HR3-160	
INTELLI-PLATE 96:	Art Robbins Instruments	102-0001-03	
PEG 3350	Hampton research	HR2-591	
PEG 8000	Hampton research	HR2-515	
PEG 400	Hampton research	HR2-603	
PEG 4000	Hampton research	HR2-605	
pcDNA3.1-Clover-mRuby2	Addgene	49089	
Overnight Express Autoinduction System 1	Emd Millipore	71300	
Lysogeny Broth powder	ThermoFisher Scientific	12795027	



1 Alewife Center #200
Cambridge, MA 02140
tel. 617.945.9051
www.jove.com

ARTICLE AND VIDEO LICENSE AGREEMENT

Title of Article:
Author(s):

Item 1 (check one box): The Author elects to have the Materials be made available (as described at <http://www.jove.com/publish>) via: Standard Access Open Access

Item 2 (check one box):

- The Author is NOT a United States government employee.
 The Author is a United States government employee and the Materials were prepared in the course of his or her duties as a United States government employee.
 The Author is a United States government employee but the Materials were NOT prepared in the course of his or her duties as a United States government employee.

ARTICLE AND VIDEO LICENSE AGREEMENT

1. **Defined Terms.** As used in this Article and Video License Agreement, the following terms shall have the following meanings: **"Agreement"** means this Article and Video License Agreement; **"Article"** means the article specified on the last page of this Agreement, including any associated materials such as texts, figures, tables, artwork, abstracts, or summaries contained therein; **"Author"** means the author who is a signatory to this Agreement; **"Collective Work"** means a work, such as a periodical issue, anthology or encyclopedia, in which the Materials in their entirety in unmodified form, along with a number of other contributions, constituting separate and independent works in themselves, are assembled into a collective whole; **"CRC License"** means the Creative Commons Attribution-Non Commercial-No Derivs 3.0 Unported Agreement, the terms and conditions of which can be found at: <http://creativecommons.org/licenses/by-nc-nd/3.0/legalcode>; **"Derivative Work"** means a work based upon the Materials or upon the Materials and other pre-existing works, such as a translation, musical arrangement, dramatization, fictionalization, motion picture version, sound recording, art reproduction, abridgment, condensation, or any other form in which the Materials may be recast, transformed, or adapted; **"Institution"** means the institution, listed on the last page of this Agreement, by which the Author was employed at the time of the creation of the Materials; **"JoVE"** means MyJoVE Corporation, a Massachusetts corporation and the publisher of *The Journal of Visualized Experiments*; **"Materials"** means the Article and / or the Video; **"Parties"** means the Author and JoVE; **"Video"** means any video(s) made by the Author, alone or in conjunction with any other parties, or by JoVE or its affiliates or agents, individually or in collaboration with the Author or any other parties, incorporating all or any portion of the Article, and in which the Author may or may not appear.

2. **Background.** The Author, who is the author of the Article, in order to ensure the dissemination and protection of the Article, desires to have the JoVE publish the Article and create and transmit videos based on the Article. In furtherance of such goals, the Parties desire to memorialize in this Agreement the respective rights of each Party in and to the Article and the Video.

3. **Grant of Rights in Article.** In consideration of JoVE agreeing to publish the Article, the Author hereby grants to JoVE, subject to **Sections 4** and **7** below, the exclusive, royalty-free, perpetual (for the full term of copyright in the Article, including any extensions thereto) license (a) to publish, reproduce, distribute, display and store the Article in all forms, formats and media whether now known or hereafter developed (including without limitation in print, digital and electronic form) throughout the world, (b) to translate the Article into other languages, create adaptations, summaries or extracts of the Article or other Derivative Works (including, without limitation, the Video) or Collective Works based on all or any portion of the Article and exercise all of the rights set forth in (a) above in such translations, adaptations, summaries, extracts, Derivative Works or Collective Works and (c) to license others to do any or all of the above. The foregoing rights may be exercised in all media and formats, whether now known or hereafter devised, and include the right to make such modifications as are technically necessary to exercise the rights in other media and formats. If the "Open Access" box has been checked in **Item 1** above, JoVE and the Author hereby grant to the public all such rights in the Article as provided in, but subject to all limitations and requirements set forth in, the CRC License.

ARTICLE AND VIDEO LICENSE AGREEMENT

4. Retention of Rights in Article. Notwithstanding the exclusive license granted to JoVE in **Section 3** above, the Author shall, with respect to the Article, retain the non-exclusive right to use all or part of the Article for the non-commercial purpose of giving lectures, presentations or teaching classes, and to post a copy of the Article on the Institution's website or the Author's personal website, in each case provided that a link to the Article on the JoVE website is provided and notice of JoVE's copyright in the Article is included. All non-copyright intellectual property rights in and to the Article, such as patent rights, shall remain with the Author.

5. Grant of Rights in Video – Standard Access. This **Section 5** applies if the "Standard Access" box has been checked in **Item 1** above or if no box has been checked in **Item 1** above. In consideration of JoVE agreeing to produce, display or otherwise assist with the Video, the Author hereby acknowledges and agrees that, Subject to **Section 7** below, JoVE is and shall be the sole and exclusive owner of all rights of any nature, including, without limitation, all copyrights, in and to the Video. To the extent that, by law, the Author is deemed, now or at any time in the future, to have any rights of any nature in or to the Video, the Author hereby disclaims all such rights and transfers all such rights to JoVE.

6. Grant of Rights in Video – Open Access. This **Section 6** applies only if the "Open Access" box has been checked in **Item 1** above. In consideration of JoVE agreeing to produce, display or otherwise assist with the Video, the Author hereby grants to JoVE, subject to **Section 7** below, the exclusive, royalty-free, perpetual (for the full term of copyright in the Article, including any extensions thereto) license (a) to publish, reproduce, distribute, display and store the Video in all forms, formats and media whether now known or hereafter developed (including without limitation in print, digital and electronic form) throughout the world, (b) to translate the Video into other languages, create adaptations, summaries or extracts of the Video or other Derivative Works or Collective Works based on all or any portion of the Video and exercise all of the rights set forth in (a) above in such translations, adaptations, summaries, extracts, Derivative Works or Collective Works and (c) to license others to do any or all of the above. The foregoing rights may be exercised in all media and formats, whether now known or hereafter devised, and include the right to make such modifications as are technically necessary to exercise the rights in other media and formats. For any Video to which this Section 6 is applicable, JoVE and the Author hereby grant to the public all such rights in the Video as provided in, but subject to all limitations and requirements set forth in, the CRC License.

7. Government Employees. If the Author is a United States government employee and the Article was prepared in the course of his or her duties as a United States government employee, as indicated in **Item 2** above, and any of the licenses or grants granted by the Author hereunder exceed the scope of the 17 U.S.C. 403, then the rights granted hereunder shall be limited to the maximum rights permitted under such

statute. In such case, all provisions contained herein that are not in conflict with such statute shall remain in full force and effect, and all provisions contained herein that do so conflict shall be deemed to be amended so as to provide to JoVE the maximum rights permissible within such statute.

8. Likeness, Privacy, Personality. The Author hereby grants JoVE the right to use the Author's name, voice, likeness, picture, photograph, image, biography and performance in any way, commercial or otherwise, in connection with the Materials and the sale, promotion and distribution thereof. The Author hereby waives any and all rights he or she may have, relating to his or her appearance in the Video or otherwise relating to the Materials, under all applicable privacy, likeness, personality or similar laws.

9. Author Warranties. The Author represents and warrants that the Article is original, that it has not been published, that the copyright interest is owned by the Author (or, if more than one author is listed at the beginning of this Agreement, by such authors collectively) and has not been assigned, licensed, or otherwise transferred to any other party. The Author represents and warrants that the author(s) listed at the top of this Agreement are the only authors of the Materials. If more than one author is listed at the top of this Agreement and if any such author has not entered into a separate Article and Video License Agreement with JoVE relating to the Materials, the Author represents and warrants that the Author has been authorized by each of the other such authors to execute this Agreement on his or her behalf and to bind him or her with respect to the terms of this Agreement as if each of them had been a party hereto as an Author. The Author warrants that the use, reproduction, distribution, public or private performance or display, and/or modification of all or any portion of the Materials does not and will not violate, infringe and/or misappropriate the patent, trademark, intellectual property or other rights of any third party. The Author represents and warrants that it has and will continue to comply with all government, institutional and other regulations, including, without limitation all institutional, laboratory, hospital, ethical, human and animal treatment, privacy, and all other rules, regulations, laws, procedures or guidelines, applicable to the Materials, and that all research involving human and animal subjects has been approved by the Author's relevant institutional review board.

10. JoVE Discretion. If the Author requests the assistance of JoVE in producing the Video in the Author's facility, the Author shall ensure that the presence of JoVE employees, agents or independent contractors is in accordance with the relevant regulations of the Author's institution. If more than one author is listed at the beginning of this Agreement, JoVE may, in its sole discretion, elect not take any action with respect to the Article until such time as it has received complete, executed Article and Video License Agreements from each such author. JoVE reserves the right, in its absolute and sole discretion and without giving any reason therefore, to accept or decline any work submitted to JoVE. JoVE and its employees, agents and independent contractors shall have

ARTICLE AND VIDEO LICENSE AGREEMENT

full, unfettered access to the facilities of the Author or of the Author's institution as necessary to make the Video, whether actually published or not. JoVE has sole discretion as to the method of making and publishing the Materials, including, without limitation, to all decisions regarding editing, lighting, filming, timing of publication, if any, length, quality, content and the like.

11. Indemnification. The Author agrees to indemnify JoVE and/or its successors and assigns from and against any and all claims, costs, and expenses, including attorney's fees, arising out of any breach of any warranty or other representations contained herein. The Author further agrees to indemnify and hold harmless JoVE from and against any and all claims, costs, and expenses, including attorney's fees, resulting from the breach by the Author of any representation or warranty contained herein or from allegations or instances of violation of intellectual property rights, damage to the Author's or the Author's institution's facilities, fraud, libel, defamation, research, equipment, experiments, property damage, personal injury, violations of institutional, laboratory, hospital, ethical, human and animal treatment, privacy or other rules, regulations, laws, procedures or guidelines, liabilities and other losses or damages related in any way to the submission of work to JoVE, making of videos by JoVE, or publication in JoVE or elsewhere by JoVE. The Author shall be responsible for, and shall hold JoVE harmless from, damages caused by lack of sterilization, lack of cleanliness or by contamination due to the making of a video by JoVE its employees, agents or independent contractors. All sterilization, cleanliness or decontamination procedures shall be solely the responsibility of the Author and shall be undertaken at the Author's


expense. All indemnifications provided herein shall include JoVE's attorney's fees and costs related to said losses or damages. Such indemnification and holding harmless shall include such losses or damages incurred by, or in connection with, acts or omissions of JoVE, its employees, agents or independent contractors.

12. Fees. To cover the cost incurred for publication, JoVE must receive payment before production and publication of the Materials. Payment is due in 21 days of invoice. Should the Materials not be published due to an editorial or production decision, these funds will be returned to the Author. Withdrawal by the Author of any submitted Materials after final peer review approval will result in a US\$1,200 fee to cover pre-production expenses incurred by JoVE. If payment is not received by the completion of filming, production and publication of the Materials will be suspended until payment is received.

13. Transfer, Governing Law. This Agreement may be assigned by JoVE and shall inure to the benefits of any of JoVE's successors and assignees. This Agreement shall be governed and construed by the internal laws of the Commonwealth of Massachusetts without giving effect to any conflict of law provision thereunder. This Agreement may be executed in counterparts, each of which shall be deemed an original, but all of which together shall be deemed to be one and the same agreement. A signed copy of this Agreement delivered by facsimile, e-mail or other means of electronic transmission shall be deemed to have the same legal effect as delivery of an original signed copy of this Agreement.

A signed copy of this document must be sent with all new submissions. Only one Agreement required per submission.

CORRESPONDING AUTHOR:

Name:	Andrew P. VanDemark	
Department:	Biological Sciences	
Institution:	University of Pittsburgh	
Article Title:	Combining wet and dry lab techniques to guide crystallization of large coiled-coil containing proteins	
Signature:		Date: 4/21/16

Please submit a signed and dated copy of this license by one of the following three methods:

- 1) Upload a scanned copy of the document as a pdf on the JoVE submission site;
- 2) Fax the document to +1.866.381.2236;
- 3) Mail the document to JoVE / Attn: JoVE Editorial / 1 Alewife Center #200 / Cambridge, MA 02139

For questions, please email submissions@jove.com or call +1.617.945.9051



University of Pittsburgh

Department of Biological Sciences

Andrew P. VanDemark, Ph.D.
Associate Professor
University of Pittsburgh
Department of Biological Sciences
360A Langley Hall
Fifth and Ruskin Avenues
Pittsburgh, PA 15260
Phone: (412) 648-0110
e-mail: andyv@pitt.edu

August 2, 2016

Dear Editor,

We are submitting the revised manuscript entitled “**Combining wet and dry lab techniques to guide the crystallization of large coiled-coil containing proteins**” by Zalewski et al, for consideration for publication in JoVE.

We thank you for the opportunity to revise this document and hope we have addressed all of the concerns from the Editorial and Peer Review. Below we address each of the points in the order received. Please note that we have made all the indicated changes with “Track Changes” on and they should be clearly indicated in red.

Editorial Comments:

- 1) We have taken the opportunity to proof read the document thoroughly as suggested.
- 2) We have fixed the Figure4 figure legend, which was to a previous version of the figure. We apologize for the oversight.
- 3) We have added LB media to the materials list and defined it within the protocol. Autoinduction media was already present as the last item in the materials list.
- 4) We have removed all four instances of “you” or “your” within the document. We have also made corrected the uppercase I in imidazole, and place in the missing “buffer” in step 2.3.6.
- 5) Protein concentration is determined spectrophotometrically (A_{280}) and this has been added. As has the Chromatography reference and a reference for the vapor diffusion method which we feel should help address the questions about how the trays are set up. Additional details have been added to address the magnification used on the microscope and the temperature of the trays.
- 6) The development of the initial domain boundaries step is far and away the most important step in the protocol and a short discussion of this is now included within the manuscript.

Reviewer #1

Major concerns

- 1) The reviewer comments on the desire to link information learned from the experiments as performed in Figure 5 & 6 with the outcomes in Figure 7. Additionally, it would be desirable to also

link in the informatics analysis too, and could a quantitative score be attached that could aid the user towards the final answer quicker.

- We agree that it would be super to have such a score and had previously put quite a significant amount of time into asking whether a quantitative score could be obtained by sequence analysis alone with inconclusive results due to the lack of diversity within coiled-coil protein sequences. After applying this technique and its many variants on a variety of proteins, we feel that it is tool best utilized to quickly narrow down a very large set of possible domain boundaries down into a manageable set of fragments that can be tested quickly and cheaply. We were also worried that users new to structural analysis might rely too heavily upon the scoring function and by testing only the “best” fragment, might actually miss out on fragments that would actually work. We have added language into the discussion sections to address this important point.

2) The reviewer points out that there are a variety of Shrm and Rock constructs used throughout figures 5 and 6, and analyzed by a variety of assays and this mash up of proteins and techniques was confusing.

We agree that this section needed significant clarification as the important points in figures 5 and 6 were not readily apparent. We have made extensive changes to these figures including:

- Reordering figure 5 and making it panels A, B, and C. The point in panels 5A & B were to compare the behavior or purified proteins in limited proteolysis and how this assay was a good technique to improve crystallization outcomes.
- The new Figure 5C (the old 5A) describes the utility of this technique using Ruby-tagged protein. Since this is the type of protein that would be generated from the protocol, it was desirable to demonstrate that proteolysis could still be informative.
- Figure 6A now shows how this technique could be used with even point mutants of a protein fragment and the figure has been altered to make that clearer.
- Lastly, Figure 6B is designed to show how that the technique can be applied successfully on protein complexes. In this case, the complexes all used the same human Shrm SD2 1427-1610 because we already knew it would crystallize on its own and it made the analysis in figure 6 clearer. Thus the complexes only differed in what Rock fragment was used. While the complexes with the smaller two Rock fragments crystallized, the complex containing Rock 788-906 only formed crystals after many weeks and the protein within them had not remained intact. We did not analyze the specific breakdown products generated within the drops containing the 788-906 complex but did note that the last fragment generated crystals readily and quickly. To improve the clarity of this section we have included much that this discussion within the results and improved the figures for clarity.

3) Lastly, the reviewer states “Finally, in Figure 7, individual crystals are obtained, but we have no idea of the final constructs that were used, nor in how it was decided to try these specific constructs. Importantly - is this data supporting the authors evidence from the combined in silico, proteolysis and functional analyses? What constructs were used in the precipitated wells? Did those constructs ‘fail’ in the earlier analysis?”

- We apologize for any confusion, but the point in figure 7 was to provide the user a set of 12 common starting conditions that could be used with any protein and was not intended to demonstrate an analysis of the coiled-coil proteins discussed earlier. We have added some language within the results to address this.

Minor concerns:

- Protocol 1.1.4, the reviewer correctly notes that it should be Clustal-Omega. This has been changed.
- We have added labels as suggested by the reviewer and agree that it improves clarity.
- We have added MW markers as suggested.

Reviewer #1

There was some concern about why the full-length Shroom sequence was being split prior to analysis by PSIPRED and DISOPRED in step 1.2.1. This is a technical limitation of the DISOPRED web server and beyond our control. The reason we suggested using the C-terminal 1,000 amino acids is that the SD2 coiled-coil region is located at the extreme C-terminus of Shrm. This domain is annotated as ~300 amino acids in the literature, so this leaves about 700 amino acids of “buffering sequence”. We hoped this large buffer would make users confident that the results shouldn’t be influenced by the truncation. In practice, we have only noticed very subtle differences that occur within 1-2 amino acids of the truncation point. We agree that our wording wasn’t clear enough however, and altered that note accordingly.

Minor concerns and additional notes:

- We have added an entire section into the discussion section to elaborate on the limitations of the analysis (both biochemical and computational) as well as suggest alternative approaches.
- We have adjusted the background introduction of Shrm and Rock to appeal to a broader audience.
- We have adjusted “Autoinduction” in line 194 to match the earlier description.
- References have been updated and all now include DOIs, and the Duplicate “references” has been removed. We apologize for the oversight.
- We have included the relevant temperatures throughout.

We thank both the Editorial and Peer reviewers for their time and efforts. Their comments have been critical in improving the clarity and utility of this manuscript.

Thank you in advance for your time.

Sincerely,

A handwritten signature in blue ink, appearing to read "Andrew P. VanDemark". The signature is fluid and cursive, with the first letters of the first and last names being capitalized and prominent.

Andrew P. VanDemark, Ph.D.

Associate Professor
Department of Biological Sciences