

# Journal of Visualized Experiments

## Method of direct segmental intra-hepatic delivery using a rat liver hilar clamp model --Manuscript Draft--

<b>Manuscript Number:</b>	JoVE54729R3
<b>Full Title:</b>	Method of direct segmental intra-hepatic delivery using a rat liver hilar clamp model
<b>Article Type:</b>	Invited Methods Article - JoVE Produced Video
<b>Keywords:</b>	Hilar Clamp, Ischemia-Reperfusion Injury, Liver Transplantation, Polyethylene Glycol-Superoxide Dismutase (PEG-SOD)
<b>Manuscript Classifications:</b>	3.18.452: Metabolic Diseases
<b>Corresponding Author:</b>	Bryan A. Whitson, MD, PhD The Ohio State University Columbus, OH UNITED STATES
<b>Corresponding Author Secondary Information:</b>	
<b>Corresponding Author E-Mail:</b>	Bryan.Whitson@osumc.edu
<b>Corresponding Author's Institution:</b>	The Ohio State University
<b>Corresponding Author's Secondary Institution:</b>	
<b>First Author:</b>	Eliza W. Beal, MD
<b>First Author Secondary Information:</b>	
<b>Other Authors:</b>	Eliza W. Beal, MD Curtis A. Dumond Jung-Lye Kim, PhD Khalid Mumtaz, MD Don Hayes Jr., MD, MS Ken Washburn, MD Sylvester M. Black, MD, PhD
<b>Order of Authors Secondary Information:</b>	
<b>Abstract:</b>	Major hepatic surgery with inflow occlusion, and liver transplantation, necessitates a period of warm ischemia, and a period of reperfusion leading to ischemia/reperfusion (I/R) injury with myriad negative consequences. Potential I/R injury in marginal organs destined for liver transplantation contributes to the current donor shortage secondary to a decreased organ utilization rate. A significant need exists to explore hepatic I/R injury in order to mediate its' impact on graft function in transplantation. Rat liver hilar clamp models are used to investigate the impact of different molecules on hepatic I/R injury. Depending on the model, these molecules have been delivered using inhalation, epidural infusion, intraperitoneal injection, intravenous administration or injection into the peripheral superior mesenteric vein. A rat liver hilar clamp model has been developed for use in studying the impact of pharmacologic molecules in ameliorating I/R injury. The described model for rat liver hilar clamp includes direct cannulation of the portal supply to the ischemic hepatic segment via a side branch of the portal vein, allowing for direct segmental hepatic delivery. Our approach is to induce ischemia in the left lateral and median lobes for 60 minutes, during which time the substance under study is infused. In this case, pegylated-superoxide dismutase (PEG-SOD), a free radical scavenger, is infused directly into the ischemic segment. This series of experiments demonstrates that infusion of PEG-SOD is protective against hepatic I/R

	<p>injury. Advantages of this approach include direct injection of the molecule into the ischemic segment with consequent decrease in volume of distribution and reduction in systemic side effects.</p>
<b>Author Comments:</b>	<p>Dear Editors and Reviewers,</p> <p>Thank you for your comments and suggestions. Please see point by point responses below in red.</p> <p>Editorial comments: The manuscript has been modified by the Science Editor to comply with the JoVE formatting standard. Please maintain the current formatting throughout the manuscript. The updated manuscript (54729_R2_033016.docx) is located in your Editorial Manager account. In the revised PDF submission, there is a hyperlink for downloading the .docx file. Please download the .docx file and use this updated version for any future revisions.</p> <p>Changes made by the Science Editor:</p> <p>1. There have been edits made to the manuscript.</p> <p>Thank you for making the edits.</p> <p>Changes to be made by the Author(s):</p> <p>1. Please take this opportunity to thoroughly proofread the manuscript to ensure that there are no spelling or grammar issues. The JoVE editor will not copy-edit your manuscript and any errors in the submitted revision may be present in the published version.</p> <p>2. There are two minor typos: Introduction, line 138 - Figure 1 does not have panels A-D; and Line 497, "hold" should be "hole."</p> <p>Figure 1 and 2 were mislabeled. Figure 1 should be the multipanel figure that was labeled Figure 2 and Figure 2 should be the single panel figure that was labeled Figure 1. They were relabeled and reuploaded on the JoVE submission site.</p> <p>The typo on line 471 was fixed - "hold," was changed to, "hole."</p> <p>Reviewers' comments: Reviewer #1: Manuscript Summary: This manuscript describes a small series of experiments with a rat liver hilar clamp model to study the effect of pegylated-superoxide dismutase (PEG-SOD) in reducing the effects of ischemia-reperfusion injury.</p> <p>Major Concerns: No major concerns identified</p> <p>Minor Concerns: Minor concerns include: 1)The experimental groups each utilize a very low "N" which increases concern about the validity of the statistical analyses. The authors should explain why such a low "N" was used and discuss the potential impact this has on their data.</p> <p>Although a low N was used we were able to demonstrate the significant effect that PEG-SOD has on ameliorating ischemia-reperfusion injury in the liver. There was also low animal intervariability. We have utilized this model with a number of potential molecules in our lab and it is reproducible.</p> <p>2) The authors should elaborate on their reasons for selecting to evaluate PEG-SOD in these experiments.</p> <p>We elaborated on our selection of PEG-SOD in a new paragraph in the discussion section of the manuscript.</p>

3) The authors should comment on the impact of PEG-SOD on pathologic changes in the liver tissue. Did it reduce histologic evidence of liver injury?

In our experience using this and similar models the one hour long period of ischemia and two hour long period of reperfusion is not of sufficient duration to produce dramatic histologic changes, although as demonstrated here there is clearly a significant impact on biochemical markers.

Additional Comments to Authors:

N/A

Reviewer #2:

Manuscript Summary:

Beal et al present a novel technique of partial portal vein clamping and cannulation in a rat model. The authors found that injection of PEG-SOD directly into the portal vein branch of the left lobe decrease liver injury after ischemia and reperfusion.

Major Concerns:

No major concerns

Minor Concerns:

The paper is well written and describes an important novel technique of rat hepatic ischemia and reperfusion.

1. The authors should provide H&E staining of the liver tissue following ischemia and reperfusion.

In our experience using this and similar models the one hour long period of ischemia and two hour long period of reperfusion is not of sufficient duration to produce dramatic histologic changes, although as demonstrated here there is clearly a significant impact on biochemical markers.

2. The authors should discuss if the model is suitable for tumor cell injection in specific liver lobes.

Although we believe that this model could be used for tumor cell injection, our lab is not tumor focused and we have not experimented with this in particular. This would certainly be an area for further adaptation of the model described here and a fruitful area for further experimentation.

3. Beal et al should discuss possible implications for the investigation of liver regeneration.

This model is not directly designed to test liver regeneration, but short-term response to ischemia-reperfusion injury. With longer ischemic times there would likely be increased injury and it may be possible to study liver regeneration. A sentence in regards to this has been added.

Additional Comments to Authors:

N/A

Additionally, we updated the acknowledgement statement to more accurately reflect the funding support.

Thank you,

Eliza W. Beal, MD

Nam Nguyen, PhD  
Science Editor  
JoVE  
1 Alewife Center, Suite 200  
Cambridge, MA 02140

March 28, 2016

Dear Dr. Nguyen,

Thank you for your comments and revisions.

1. We have taken this opportunity to thoroughly proofread the manuscript to ensure that there are no spelling or grammar issues. We understand that the JoVE editor will not copy-edit our manuscript and any errors in the submitted revision may be present in the published version.

2. We have used g instead of RPM for centrifugation speeds.

3. We apologize, but the incorrect figures were submitted for figures 1 and 2 and have been resubmitted correctly. Thank you for pointing out this error. The text explicitly describing Figure 13 was added back into the figure legend. Please let us know if there is a specific format we should have this in.

4.

- Reference 4 and 5 were reformatted
- IVC was defined at its' first appearance (3.13) and later definitions were removed
- We apologize, but the incorrect figures were submitted for figures 1 and 2 and have been resubmitted correctly. Thank you for pointing out this error.
- In 3.2 and in all other appearances "mg" were converted to "g"

5.

- the "its" on line 90 and 436 were changed to "its"
- the run-on sentence in 7.3 was corrected
- the error, "by manually by feeling it," was changed to, "manually by feeling it"
- 3.8 description of how to place rib retractors was added
- 3.11 description of how to make a window was added
- 3.13 has been clarified
- 3.14 has been clarified
- 3.17 the catheter is inserted past the bifurcation of the right and left portal vein and this was added to this step, 3.18 also talks about positioning and confirmation of positioning
- 3.20 the infusion should be started as close as possible to the start of ischemia. This was added to this step.
- 5.1 this is one hour from the start of the ischemic time, this was added to this step
- 6.1 if there is continued bleeding then manual gentle pressure should be applied to the IVC with a sterile cotton swab or small section cut from gauze
- 7.3 the samples should be as large as possible and their size should be limited only by the amount of available liver tissue

8.2 The lysis buffer was the RIPA buffer from Millipore. Information regarding the type of buffer (RIPA) was added to this step. This is available from several manufacturers. It was also added to the equipment table.

6. q-tip was removed and replaced with sterile cotton swab

Thank you,

Dr. Eliza W. Beal and Dr. Sylvester M. Black

**Additional Information:**

**Question**

**Response**

If this article needs to be "in-press" by a

certain date to satisfy grant requirements,  
please indicate the date below and  
explain in your cover letter.

**TITLE:**

Method of direct segmental intra-hepatic delivery using a rat liver hilar clamp model

**AUTHORS:**

Eliza W. Beal, MD

Collaboration for Organ Perfusion, Protection, Engineering and Regeneration (COPPER) Lab  
Division of Transplant, Department of Surgery  
Comprehensive Transplant Center  
The Ohio State University Wexner Medical Center  
Columbus, OH, USA  
[Eliza.Beaal@osumc.edu](mailto:Eliza.Beaal@osumc.edu)

Curtis Dumond

Collaboration for Organ Perfusion, Protection, Engineering and Regeneration (COPPER) Lab  
Division of Transplant, Department of Surgery  
Comprehensive Transplant Center  
The Ohio State University Wexner Medical Center  
Columbus, OH, USA  
[Dumond.15@osu.edu](mailto:Dumond.15@osu.edu)

Jung-Lye Kim, PhD

Collaboration for Organ Perfusion, Protection, Engineering and Regeneration (COPPER) Lab  
Division of Transplant, Department of Surgery  
Comprehensive Transplant Center  
The Ohio State University Wexner Medical Center  
Columbus, OH, USA  
[JungLye.Kim@osumc.edu](mailto:JungLye.Kim@osumc.edu)

Khalid Mumtaz, MD

Collaboration for Organ Perfusion, Protection, Engineering and Regeneration (COPPER) Lab  
Division of Transplant, Department of Surgery  
Comprehensive Transplant Center  
The Ohio State University Wexner Medical Center  
Columbus, OH, USA  
[Khalid.Mumtaz@osumc.edu](mailto:Khalid.Mumtaz@osumc.edu)

Don Hayes, Jr., MD, MS

Collaboration for Organ Perfusion, Protection, Engineering and Regeneration (COPPER) Lab  
Division of Transplant, Department of Surgery  
Comprehensive Transplant Center  
The Ohio State University Wexner Medical Center  
Columbus, OH, USA  
[Don.Hayes@osumc.edu](mailto:Don.Hayes@osumc.edu)

Ken Washburn, MD

Collaboration for Organ Perfusion, Protection, Engineering and Regeneration (COPPER) Lab  
Division of Transplant, Department of Surgery  
Comprehensive Transplant Center  
The Ohio State University Wexner Medical Center  
Columbus, OH, USA  
[Ken.Washburn@osumc.edu](mailto:Ken.Washburn@osumc.edu)

Bryan A. Whitson, MD, PhD  
Collaboration for Organ Perfusion, Protection, Engineering and Regeneration (COPPER) Lab  
Division of Transplant, Department of Surgery  
Comprehensive Transplant Center  
The Ohio State University Wexner Medical Center  
Columbus, OH, USA  
[Bryan.Whitson@osumc.edu](mailto:Bryan.Whitson@osumc.edu)

Sylvester M. Black, MD, PhD  
Collaboration for Organ Perfusion, Protection, Engineering and Regeneration (COPPER) Lab  
Division of Transplant, Department of Surgery  
Comprehensive Transplant Center  
The Ohio State University Wexner Medical Center  
Columbus, OH, USA  
[SylvesterBlack@osumc.edu](mailto:SylvesterBlack@osumc.edu)

**CORRESPONDING AUTHOR:**

Sylvester M. Black, MD, PhD  
[SylvesterBlack@osumc.edu](mailto:SylvesterBlack@osumc.edu)  
Phone: (614) 293-3212  
Fax: (614) 293-6720

**KEYWORDS:**

Hilar clamp, ischemia-reperfusion injury, liver transplantation, polyethylene glycol-superoxide dismutase (PEG-SOD), rat, direct cannulation, hepatic delivery

**SHORT ABSTRACT:**

A unique rat liver hilar clamp model was developed for studying the impact of pharmacologic molecules in ameliorating ischemia-reperfusion injury. This model includes direct cannulation of the portal supply to the ischemic liver segment via a branch of the portal vein, allowing for direct hepatic delivery.

**LONG ABSTRACT:**

Major hepatic surgery with inflow occlusion, and liver transplantation, necessitates a period of warm ischemia, and a period of reperfusion leading to ischemia/reperfusion (I/R) injury with myriad negative consequences. Potential I/R injury in marginal organs destined for liver transplantation contributes to the current donor shortage secondary to a decreased organ utilization rate. A significant need exists to explore hepatic I/R injury in order to mediate its impact on graft function in transplantation. Rat liver hilar clamp models are used to investigate

the impact of different molecules on hepatic I/R injury. Depending on the model, these molecules have been delivered using inhalation, epidural infusion, intraperitoneal injection, intravenous administration or injection into the peripheral superior mesenteric vein. A rat liver hilar clamp model has been developed for use in studying the impact of pharmacologic molecules in ameliorating I/R injury. The described model for rat liver hilar clamp includes direct cannulation of the portal supply to the ischemic hepatic segment via a side branch of the portal vein, allowing for direct segmental hepatic delivery. Our approach is to induce ischemia in the left lateral and median lobes for 60 min, during which time the substance under study is infused. In this case, pegylated-superoxide dismutase (PEG-SOD), a free radical scavenger, is infused directly into the ischemic segment. This series of experiments demonstrates that infusion of PEG-SOD is protective against hepatic I/R injury. Advantages of this approach include direct injection of the molecule into the ischemic segment with consequent decrease in volume of distribution and reduction in systemic side effects.

## **INTRODUCTION:**

Major hepatic surgery with inflow occlusion, and liver transplantation, necessitate a period of warm ischemia, and a period of reperfusion leading to ischemia/reperfusion (I/R) injury <sup>1</sup>. The consequences of I/R injury in the liver have been detailed extensively <sup>1-3</sup>. Consequences of I/R injury detailed in the literature include: generation of reactive oxygen species, initiation of the inflammatory cascade including activation of neutrophils, Kupffer cells, and endothelial cells, activation of the heme oxygenase system and activation of toll-like receptors, an imbalance between endothelin and nitric oxide, activation of nuclear factor- $\kappa$ B, and promotion of proinflammatory cytokine and adhesion molecule synthesis <sup>1-3</sup>. These proinflammatory events may lead to apoptosis, necrosis, organ dysfunction and eventual organ failure <sup>3</sup>.

I/R injury in organs destined for liver transplantation can lead to early graft loss and contributes to the current donor shortage as marginal organs are more susceptible to injury <sup>3</sup>. There are currently 15,226 potential recipients on the waiting list for liver transplantation in the United States <sup>4</sup> and only 5,950 liver transplants were performed in 2015 <sup>5</sup>. Due to this extreme limitation in organ availability, research exploring hepatic I/R injury is needed in order to optimize graft function and organ utilization.

Animal models used to study hepatic I/R injury include rat hilar clamp models and rat liver transplantation models. There are a variety of rat hilar clamp models currently in use. The most common is one in which the portal vein, hepatic artery and bile duct supplying the left lateral and median lobes are clamped using microsurgical clips <sup>6-12</sup> for 30 to 60 min <sup>6,7,10,13,14</sup>, and then a period of reperfusion from 60 min to 24 hr <sup>7,9,10,13,14</sup> is allowed. The left lateral and median lobes of the rat liver comprise about 70% of the hepatic parenchyma <sup>9</sup>. Some protocols designed to study ischemic preconditioning include intermittent clamping of the hilar vessels or the hind-limb prior to a longer period of ischemia induced by clamping the hilar vessels <sup>9,13</sup>. There are also several modifications described in the literature. The first is to clamp the portal vein and hepatic artery supplying the left lateral and median lobes, but exclude the bile duct <sup>15</sup>. A second modification is to induce total hepatic ischemia by clamping the portal vein, hepatic artery and bile duct prior to their division <sup>16-20</sup>. A third modification includes clamping of the hilar vessels to the right lobe for 30 to 60 min <sup>8</sup>. An additional modification involves clamping the vascular



bundle in one hind limb in order to induce injury in the liver<sup>13,21</sup>. Various approaches to the hilar clamp procedure are illustrated in Figure 1A-D.

Rat liver hilar clamp models have been used to study the impact of different molecules and compounds on hepatic I/R. Depending on the model used these molecules have been delivered using inhalation<sup>11</sup>, epidural infusion<sup>12</sup>, intraperitoneal injection<sup>17,18,21,22</sup>, intravenous administration<sup>10,14,15,19,23,24</sup> or injection into the peripheral superior mesenteric vein<sup>8</sup>.

The model for rat liver hilar clamp detailed in this report includes direct cannulation of the portal supply to the ischemic segment via a side branch of the portal vein (Figure 2), which allows for direct segmental hepatic delivery of the pharmacological substance under study. Our approach is to induce ischemia in the left lateral and median lobes for 60 min, during which time an infusion of the substance under study, in this case, pegylated-superoxide dismutase, a free radical scavenger<sup>25</sup>, is infused directly into the ischemic segment. Blood samples are taken prior to induction of ischemia and at 120 min post-reperfusion. At this point, the rat is sacrificed and samples are taken from the left and median lobes. Additionally, samples are taken from the right lobe to serve as an internal control.

There are numerous advantages to this approach. First and foremost, when the pharmacologic substance under study can be directly injected into the ischemic segment the volume of distribution is quite low in comparison to the volume of distribution of injection into the systemic circulation or the peritoneal cavity. Additionally, this approach reduces, although does not eliminate, the possibility of systemic side effects.

## **PROTOCOL:**

All procedures were performed according to the guidelines of the Institutional Animal Care and the National Research Council's Guide for the Humane Care and Use of Laboratory Animals (IACUC) and has undergone approval by the Ohio State University IACUC committee.

### **1. Initial Set-up**

1.1 Set-up the surgical microscope and the operating theater (Figures 3, 4). Turn on all equipment including that for maintaining anesthesia and monitoring vital signs. Turn on the electrosurgical unit and warming pad. Position the infusion pump near the operating table.

1.1.1 Draw up 10 mL of liquid isoflurane for inhalation (molecular weight 184.5) in the anesthesia syringe and place it in the anesthesia unit.

1.1.2 Set-up a 200 mL container of liquid nitrogen near the operating table and another near the centrifuge where blood samples will be processed.

1.1.3 Position the surgical instruments, 4-0 and 7-0 braided silk suture, sterile cotton swabs, 4x4 non-woven sponges, 5 mL syringes, and 27 gauge insulin syringes near the operating table.

1.2 Prepare the isoflurane chamber and ensure that sufficient isoflurane is instilled in the anesthesia induction delivery system.

## **2. Induction of Anesthesia**

2.1 Before handling the rat put on the following personal protective equipment (PPE): surgical mask, surgical gloves, and disposable gown.

2.2 Weigh the rat and record the weight.

Note: Sprague Dawley rats should be used.

2.3 Place the rat in the anesthesia chamber and turn on the isoflurane and the oxygen. Induce anesthesia using the isoflurane chamber.

2.4 Clip the animal's abdominal hair using an electric hair clipper to allow for cleaner exposure (Figure 5).

2.5 Place the animal back in the isoflurane chamber for an additional one minute. Perform a toe pinch to verify depth of anesthesia.

## **3. Procedure**

3.1 Position the rat with the animal's nose in the nose cone and four extremities immobilized with restraints or tape on the warming pad.

3.2 Continue anesthesia using the anesthesia delivery system, nose cone and isoflurane with anesthesia at 3.6% for animals weighing between 200 and 250 g and 4% for animals weighing greater than 250 g. Confirm depth of anesthesia by performing a toe pinch and a skin pinch.

3.3 Make a midline abdominal incision from pubis to xiphoid through the skin using sharp scissors (Figure 6).

3.4 Make an incision in the peritoneum along the linea alba from pubis to xiphoid and enter the abdomen taking care not to damage the bladder or bowel. As the liver also sticks to the peritoneum anteriorly near the xiphoid process, ensure that it releases prior to incising the abdominal wall in this area.

3.5 Make a transverse incision through the skin and the peritoneum at the level of the inferior border of the right lobe of the liver.

3.6 Turn the anesthesia down to 1.6% for animals weighing between 200 and 250 g and 2% for animals weighing greater than 250 g.

3.7 Retract the xiphoid process using a curved mosquito clamp.

3.8 Place rib retractors pulling the ribs as far apart as possible from the midline (Figure 7). Cut the falciform, phrenic and gastric ligaments. Flip the liver up using moistened sterile cotton swabs.

3.9 Cut additional ligaments as necessary to gain access to the porta. Perform visceral rotation with saline moistened gauze (Figure 7).

3.10 Remove the loose connective tissue overlying the portal hilum using sharp or blunt dissection. Remove the loose connective tissue overlying the length of the portal vein.

3.11 Use forceps to push through the loose connective tissue posterior to the left portal vein, artery and bile duct making a window and place 4-0 Potts suture but do not cinch down (Figure 8).

3.12 Clear off the loose connective tissue overlying the posterior branch to the portal vein that comes in at approximately the level of the right kidney. This vein will be used for cannulation.

3.13 Draw 0.5 mL of blood out of the inferior vena cava (IVC) with an insulin syringe (Figure 9). Place the 0.5 mL of blood in a small vial, centrifuge at 135 x g for 12 min. Attempt to draw off serum.

3.13.1 If a distinct line cannot be appreciated between red blood cells and serum, try to centrifuge for an additional 2-3 min at 135 x g. Draw off serum and place in a vial for alanine-aminotransferase (ALT). Snap freeze this specimen by placing it directly into liquid nitrogen.

3.14 Cut two pieces of 7-0 suture and place near the vein that will be used for cannulation. Place the first 7-0 loop around this vein as far medial as possible. Tie this loop and use it to retract using a curved mosquito clamp (Figure 10). Place a second 7-0 loop on the vein that will be used for cannulation near its intersection with the portal vein and place one tie, but do not cinch down.

3.15 Prepare the infusion pump with a 5 mL syringe with 3 mL of reagent. Prime the tubing.

3.16 Clamp distal portal vein using a microsurgical clamp.

Note: This will reduce bleeding when the vein is incised for cannulation.

3.17 Cut a 0.5 mm hole in the vein in between the 7-0 stay suture and its intersection with the portal vein using small microsurgical scissors. Use 27-0 catheter to cannulate the left portal venous system (Figures 11, 12). Insert the catheter past the bifurcation of the left and right portal veins.

3.18 Check placement of the cannula by infusing 1 mL of normal saline and watch for the left lateral and median lobes of the liver to blanch. Manually confirm that catheter is past the take-off of the right portal vein, but not beyond the take-off of the portal vein feeding the median lobe.

3.19 Cinch down the Potts suture and start ischemia time. Tighten 7-0 suture around vein and 27-0 catheter to hold it in place and remove the clamp from the distal portal vein.

3.20 Start the infusion of polythylene glycol-superoxide dismutase (PEG-SOD, 0.00067 g/mL) using the infusion pump. Start the infusion as close as possible to the start of the ischemic time.

#### **4. Monitoring**

4.1 Continue to monitor the animal's vital signs throughout the infusion. Deliver 2 mL of 0.9% normal saline or 2 mL of PEG-SOD (0.00067 g/mL) dissolved in 0.9% normal saline over a period of 15 min.

#### **5. Reperfusion**

5.1 Allow one hour to pass from the beginning of the ischemic time. This is 1-hour of warm ischemia time.

5.2 Remove the Potts suture. Remove the 27-0 catheter. Cinch down the 7-0 suture around the vein. Note the time. This marks the time of reperfusion.

#### **6. Continued Sampling**

6.1 Draw 0.5 mL of blood out of the IVC at 120 min post-reperfusion. Draw the blood slowly to avoid lysing red blood cells. Slowly drip the blood into a vial. Ensure that bleeding from the IVC is controlled after each blood draw.

6.1.1 If there is continued bleeding apply gentle pressure with a sterile cotton swab or a small 1 cm by 1 cm section cut from gauze.

6.2 Centrifuge at 135 x g for 12 min. If sufficient separation is not achieved, try an additional 2-3 min at 135 x g.

6.3 Place half of the serum in a vial for later processing for ALT. Snap freeze these specimens.

#### **7. Euthanasia**

7.1 While the rat is still under anesthesia cut the IVC and superior vena cava (SVC) and monitor until blood flow, respiration and heart beat cease.

7.2 Incise the diaphragm and perform a brief hepatectomy by incising the diaphragm in a circle and incising additional connective tissue that remains connecting the liver to the peritoneal cavity. Remove the liver from the peritoneal cavity.

7.3 Take four samples from the left and median lobes of the liver and four samples from the right lobe of the liver. The samples should be as large as possible and their size will be limited only by the amount of available liver tissue. Place these in small, labeled vials, and snap freeze in the liquid nitrogen. Use these for later processing for tissue adenosine triphosphate (ADP), malondialdehyde (MDA) and glutathione (GSH).

## 8. Post-experiment Analysis

8.1 Determine glutathione (GSH), malondialdehyde (MDA) and alanine aminotransferase (ALT) activities in liver tissue and serum samples using diagnostic kits according to the manufacturer's instructions.

8.2 Homogenize the liver tissue with lysis buffer and quantify using a Bradford assay. Analyze tissue lysate by sodium dodecyl sulfate-polyacrylamide gel electrophoresis and immunoblot using antibodies against cleaved caspase-3 and actin. Quantify western blots performed with publically available software.

### REPRESENTATIVE RESULTS:

This experiment was performed with 2 groups of  $n=3$  rats each. Three rat livers were injected with 2 mL of normal saline (NS) with the infusion pump over a period of 15 min. Three rat livers were injected with 2 mL of normal saline (NS) mixed with pegylated-superoxide dismutase (PEG-SOD, 0.00067 g/mL) with the infusion pump over a period of 15 min. As described in the above protocol, blood samples were taken pre-hilar clamp and at 120-min post-reperfusion. Additionally, after completion of 120-min of reperfusion four liver tissue samples were taken from the left and median lobes and four liver samples were taken from the right lobe of the rat liver.

Serum Alanine Aminotransferase (ALT) was measured pre-hilar clamp and at 120-min post-reperfusion in control (NS) and experimental (PEG-SOD) animals. There was a significant difference between the ALT level of control (NS) animals pre-hilar clamp and at 120-min post-reperfusion. There was a significant difference between ALT level of control (NS) and experimental animals (PEG-SOD) at 120-min (Figure 13A). Tissue malonaldehyde (MDA) was measured for control (NS) and experimental (PEG-SOD) animals in both right and left lobes of the liver. Tissue MDA in right lobe (non-hilar clamp) with control injection (NS) and experimental injection (PEG-SOD) demonstrate no significant difference. Left lobe (post-hilar clamp and reperfusion) tissue MDA with control injection (NS) is significantly different than right lobe (non-hilar clamp)  $p<0.001$ . Left lobe (post-hilar clamp and reperfusion) has significantly different levels of tissue MDA with control injection (NS) versus experimental injection (PEG-SOD)  $p<0.005$  (Figure 13B). Tissue glutathione (GSH) was measured and tissue glutathione in right lobe (non-hilar clamp) with control injection (NS) and experimental injection (PEG-SOD) demonstrate no significant difference. Left lobe (post-hilar clamp and reperfusion) tissue GSH with control injection (NS) is significantly different than right lobe (non-hilar clamp) with control injection (NS)  $p<0.05$ . Left lobe (post-hilar clamp and reperfusion) has significantly different levels of tissue glutathione with control injection (NS) versus experimental injection (PEG-SOD)  $p<0.005$  (Figure 13C). Western blot was performed comparing right and left lobe of control animals and demonstrates increased cleaved caspase-3 in the left lobe after hilar clamp

and reperfusion (Figure 13D). A second western blot was performed comparing the left lobes of animals treated with control and with PEG-SOD (Figure 13E). This demonstrates decreased cleaved caspase-3 in the liver tissue of animals treated with PEG-SOD. Densitometry was also performed demonstrating that the level of cleaved caspase-3 in liver tissue is significantly increased in the left versus right lobe of control animals (Figure 13F). In comparing the left lobe liver tissue of experimental animals, infused with PEG-SOD, and left lobe liver tissue of control animals, infused with Normal Saline, densitometry demonstrates significantly decreased cleaved caspase-3 in animals treated with PEG-SOD in comparison to animals treated with control (Figure 13G).

**Figure 1 – Anatomical Illustrations.** 1A. Anatomical illustration of the rat liver. 1B. Anatomical illustration of the rat liver. The portal pedicle to the left and median lobes of the liver is clamped. The left and median lobes are ischemic. 1C. Anatomical illustration of the rat liver. The portal pedicle to the left lobe is clamped. The left lobe is ischemic. 1D. Anatomical illustration of the rat liver. The portal pedicle to the right lobe is clamped and the right lobe is ischemic.

**Figure 2 – Anatomical Illustrations.** Anatomical illustration of the rat liver with portal vein cannulated via a side branch. The portal pedicle to the left and median lobes of the liver is surrounded by a suture and a microvessel clamp has been used to tighten around the vascular bundle. The left and median lobes are ischemic.

**Figure 3 – Instrument Set-up.** Here is the instrument set-up.

**Figure 4 – Operating Room Set-up.** Here is the operating room set-up.

**Figure 5 –Trimming of Abdominal Hair.** Here shows the trimming of the abdominal hair.

**Figure 6 – Immobilization and Skin Incision.** Here shows the immobilization of the rat and the skin incision.

**Figure 7 – Rib Retractor Placement and Evisceration.** Here shows the rib retractor placement and evisceration.

**Figure 8 – Placement of Suture.** Here shows the placement of the suture.

**Figure 9 – Blood Draw from the Inferior Vena Cava.** Here is blood draw from the inferior vena cava.

**Figure 10 – Vein Branch Tied Off and Retracted.** Here is vein branch tied off and retracted.

**Figure 11 – Process of Cannulation.** Here is the process of cannulation.

**Figure 12 – Cannulation.** Here is the cannulation.

**Figure 13: Representative Results: Direct Segmental Intrahepatic Delivery of Pegylated-Superoxide Dismutase Using a Rat Hilar Clamp Model.** NS = normal saline. PEG-SOD = pegylated-superoxide dismutase, ALT = alanine aminotransferase, MDA = malondialdehyde. A. Serum Alanine Aminotransferase (ALT, mU/mL) compared between pre-hilar clamp and 120-min post-reperfusion. There is a significant difference between control (NS) pre-hilar clamp and control (NS) at 120-min post-reperfusion ( $p < 0.001$ ). There is also a significant difference between control (NS) and experimental groups (PEG-SOD) at 120-min post-reperfusion ( $p < 0.05$ ). A student's T-test was used. Error bars represent standard deviation. B. Tissue malondialdehyde in right lobe (non-hilar clamp) with control injection (NS) and experimental injection (PEG-SOD) demonstrate no significant difference. Left lobe (post-hilar clamp and reperfusion) tissue malondialdehyde with control injection (NS) is significantly different than right lobe (non-hilar clamp)  $p < 0.001$ . Left lobe (post-hilar clamp and reperfusion) has significantly different levels of tissue malonaldehyde with control injection (NS) versus experimental injection (PEG-SOD)  $p < 0.005$ . A student's T-test was used. Error bars represent standard deviation. C. Tissue glutathione in right lobe (non-hilar clamp) with control injection (NS) and experimental injection (PEG-SOD) demonstrate no significant difference. Left lobe (post-hilar clamp and reperfusion) tissue glutathione with control injection (NS) is significantly different than right lobe (non-hilar clamp) with control injection (NS)  $p < 0.05$ . Left lobe (post-hilar clamp and reperfusion) has significantly different levels of tissue glutathione with control injection (NS) versus experimental injection (PEG-SOD)  $p < 0.005$ . A student's T-test was used. Error bars represent standard deviation. D. Western blot demonstrating increased cleaved caspase-3 in liver tissue of the left lobe (post-hilar clamp and reperfusion) versus the right lobe (non-hilar clamp) of control animals (Normal Saline). E. Western blot demonstrating decreased cleaved caspase-3 in liver tissue of animals treated with PEG-SOD in comparison to animals treated with control (Normal Saline). F. Level of cleaved caspase-3 in liver tissue is significantly increased in post-hilar clamp and reperfusion animals ( $p < 0.05$ ). A student's T-test was used. Error bars represent standard deviation. G. In comparing left lobe liver tissue of experimental animals (infused with PEG-SOD) and left lobe liver tissue of control animals (infused with Normal Saline), there is significantly decreased cleaved caspase-3 in animals treated with PEG-SOD in comparison to animals treated with control (Normal Saline). A student's T-test was used. Error bars represent standard deviation.

## DISCUSSION:

This series of experiments demonstrated that injection of PEG-SOD into the left and median lobes led to significant decreases in the release of ALT, lipid peroxidation of cell membranes (MDA), and maintenance of glutathione (GSH) when compared with controls (Normal Saline). Liver tissue transaminases including Alanine Aminotransferase (ALT) are established markers of hepatocellular injury. The decrease in ALT when the left lobe is injected with PEG-SOD suggests a protective effect of PEG-SOD. Increased tissue MDA indicates increased lipid peroxidation and is considered a marker of oxidative stress and tissue injury. Overproduction of reactive oxygen species causes an increase in production of MDA<sup>26</sup>. The significant reduction in tissue MDA in the animal's left and median lobes when injected with PEG-SOD demonstrates a protective effect of PEG-SOD. This is consistent with the current understanding that PEG-SOD protects cells from damage caused by partially reduced reactive oxygen species<sup>27</sup>. Additionally, in the presence of reactive oxygen species, glutathione disulfide is reduced to glutathione (GSH)<sup>28</sup>. The maintenance in GSH in the left and median lobes of the liver injected with PEG-SOD

further reinforces the protective effect of PEG-SOD. Additionally it is demonstrated that there is increased cleaved caspase-3, a product of apoptosis, in tissue exposed to ischemia-reperfusion injury. The decrease in cleaved caspase-3 in the left lobe when treated with PEG-SOD suggests that PEG-SOD leads to a decrease in apoptosis.

Superoxide dismutase (SOD) is a critical enzyme in the detoxication of reactive oxygen species. The enzyme catalyzes the conversion of two superoxide anions into hydrogen peroxide and water. The enzyme catalase then converts hydrogen peroxide to water and oxygen, completing the process.<sup>25</sup> The half-life of native SOD limited its use in experimental models until the development of conjugated polyethylene glycol-superoxide dismutase (PEG-SOD). Conjugation of SOD to polyethylene glycol increases its half-life from 6 min to 14 hr. Nguyen et al. demonstrated its ability to mitigate lipid peroxidation in hepatic ischemia in a rat model, using systemic delivery.<sup>29</sup>

There are a variety of potential modifications of the technique detailed here and some have previously been described in the literature. Depending on the model used molecules have been delivered using inhalation<sup>11</sup>, epidural infusion<sup>12</sup>, intraperitoneal injection<sup>17,18,21,22</sup>, intravenous administration<sup>10,14,15,19,23,24</sup> or injection into the peripheral superior mesenteric vein<sup>8</sup>.

There are several critical steps in this protocol. The most important is the cannulation of the portal vein. Care must be taken that the hole cut in the vein is not too large. The tissue is very elastic and the hole will enlarge on its own. We recommend starting by cutting a hole that is 0.5 mm with the microsurgical scissors. The cannula can be fed through the hole using an instrument, which allows for greater agility than if trying to perform this portion of the procedure by hand. Additionally, while initially feeding the cannula, it should be aimed directly towards the bifurcation of the left and right portal veins to avoid poking a hole through the back wall of the vein. When the cannula tip reaches the bifurcation it can then be fed into the left vein specifically. Once the cannula is fed into the left portal vein, which supplies both the left and median lobes, its position can be confirmed manually by feeling it inside the vein. Its position can also be confirmed by injecting a small amount of cold saline and seeing the blanching effect on the supplied segments of the liver.

The liver hilar clamp model in the rat provides a reproducible and stable platform for demonstrating hepatic ischemic-reperfusion injury. Variable hilar clamp models have been used by researchers to study the protective effects of anti-oxidants and other small molecules.<sup>6-14</sup>. Points of variation include which vessels are clamped, which segment are made ischemic, whether or not the bile duct is included and the length of the period of reperfusion.<sup>6-21</sup>. Additionally, when this model is used to study the impact of administration of a molecule the route of administration is also heterogeneous<sup>11,12 8,10,14,15,17-19,21-24</sup>. There are several advantages to the described approach. First, direct cannulation of the portal supply to the ischemic segment allows for direct segmental hepatic delivery of the pharmacological substance under study. This allows utilization of the other lobes of the livers as an internal control. Second, segmental hepatic cannulation allows for a reduced volume of distribution for the molecule being studied. This approach thereby reduces the risk of systemic side effects as the substance is injected directly into the liver segment of interest. Direct cannulation of the hepatic segment allows for the substance to be delivered pre-ischemia, intra-ischemia or post-ischemia. This allows for study of



the molecule's effect at any point in the ischemia-reperfusion injury cycle. With increased length of ischemic time and increased level of injury additional opportunity to study liver regeneration would be available.

There are also some limitations of this approach. The first is start-up cost. The purchase of a surgical microscope could be a significant start-up cost for a lab that does not already possess one. This technique may be difficult or impossible without a microscope. The second is learning curve time. Although this procedure is relatively simple it does require some practice and it is likely that a novice will require a significant number of procedures to become an expert.

In summary, this model allows for a reproducible, simple, and cost-effective platform to study hepatic ischemia-reperfusion injury. Although in the protocol described here polyethylene glycol-superoxide dismutase, a free radical scavenger,<sup>25</sup> was infused, this model could be used to infuse a variety of different pharmacologic substances in order to evaluate their impact on I/R injury in the liver.

#### **ACKNOWLEDGEMENTS:**

We would like to acknowledge Dennis Mathias for his illustrative work. This work was supported by NIH T32AI 106704-01A1 and the T. Flesch Fund for Organ Transplantation, Perfusion, Engineering and Regeneration at The Ohio State University.

#### **DISCLOSURES:**

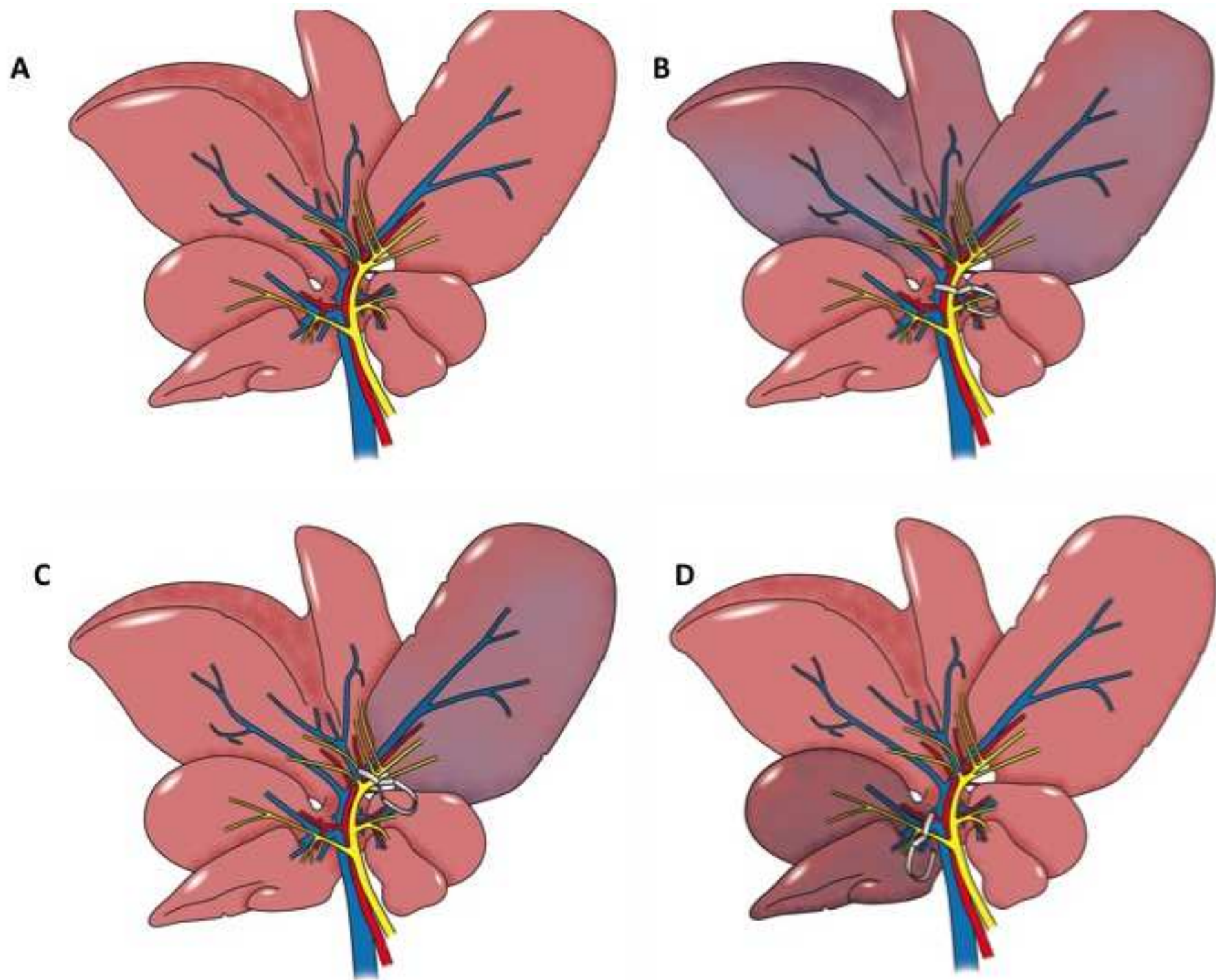
All authors report they have no disclosures.

#### **REFERENCES:**

- 1 Serracino-Inglott, F., Habib, N. A. & Mathie, R. T. Hepatic ischemia-reperfusion injury. *Am J Surg* **181**, 160-166 (2001).
- 2 Fondevila, C., Busuttil, R. W. & Kupiec-Weglinski, J. W. Hepatic ischemia/reperfusion injury--a fresh look. *Exp Mol Pathol* **74**, 86-93 (2003).
- 3 Kupiec-Weglinski, J. W. & Busuttil, R. W. Ischemia and reperfusion injury in liver transplantation. *Transplant Proc* **37**, 1653-1656, doi:10.1016/j.transproceed.2005.03.134 (2005).
- 4 OPTN. *Overall by Organ. Current US Waiting List.* , ><https://optn.transplant.hrsa.gov/converge/latestData/rptData.asp>> (
- 5 OPTN. *Transplants in the US by Recipient ABO.* , ><https://optn.transplant.hrsa.gov/converge/latestData/rptData.asp>> (
- 6 Tacchini, L., Radice, L., Pogliaghi, G. & Bernelli-Zazzera, A. Differential activation of heat shock and nuclear factor kappaB transcription factors in postischemic reperfused rat liver. *Hepatology* **26**, 186-191, doi:10.1053/jhep.1997.v26.pm0009214468 (1997).
- 7 Palladini, G. *et al.* Lobe-specific heterogeneity and matrix metalloproteinase activation after ischemia/reperfusion injury in rat livers. *Toxicol Pathol* **40**, 722-730, doi:10.1177/0192623312441403 (2012).
- 8 Nakano, H., Kuzume, M., Namatame, K., Yamaguchi, M. & Kumada, K. Efficacy of intraportal injection of anti-ICAM-1 monoclonal antibody against liver cell injury following warm ischemia in the rat. *Am J Surg* **170**, 64-66 (1995).

- 9 Centurion, S. A. *et al.* Effects of ischemic liver preconditioning on hepatic ischemia/reperfusion injury in the rat. *Transplant Proc* **39**, 361-364, doi:10.1016/j.transproceed.2007.01.011 (2007).
- 10 Kobayashi, H. *et al.* Role of endogenous nitric oxide in ischemia-reperfusion injury in rat liver. *J Surg Res* **59**, 772-779, doi:10.1006/jsre.1995.1238 (1995).
- 11 Striffler, G. *et al.* Inhaled Methane Limits the Mitochondrial Electron Transport Chain Dysfunction during Experimental Liver Ischemia-Reperfusion Injury. *PLoS One* **11**, e0146363, doi:10.1371/journal.pone.0146363 (2016).
- 12 Sarikus, Z., Bedirli, N., Yilmaz, G., Bagriacik, U. & Bozkirli, F. The effects of epidural bupivacaine on ischemia/reperfusion-induced liver injury. *Bratisl Lek Listy* **117**, 41-46 (2016).
- 13 Guimarães Filho, M. A. *et al.* Effect of remote ischemic preconditioning in the expression of IL-6 and IL-10 in a rat model of liver ischemia-reperfusion injury. *Acta Cir Bras* **30**, 452-460, doi:10.1590/S0102-865020150070000002 (2015).
- 14 Liu, Q. S. *et al.* Erythropoietin pretreatment exerts anti-inflammatory effects in hepatic ischemia/reperfusion-injured rats via suppression of the TLR2/NF- $\kappa$ B pathway. *Transplant Proc* **47**, 283-289, doi:10.1016/j.transproceed.2014.10.045 (2015).
- 15 Montero, E. F., Quireze, C. & d'Oliveira, D. M. Bile duct exclusion from selective vascular inflow occlusion in rat liver: role of ischemic preconditioning and N-acetylcysteine on hepatic reperfusion injury. *Transplant Proc* **37**, 425-427, doi:10.1016/j.transproceed.2004.12.194 (2005).
- 16 Tártaro, R. D. *et al.* No protective function found in Wistar rats submitted to long ischemia time and reperfusion after intermittent clamping of the total hepatic pedicle. *Transplant Proc* **47**, 1038-1041, doi:10.1016/j.transproceed.2015.03.013 (2015).
- 17 Yeh, D. Y., Yang, Y. C. & Wang, J. J. Hepatic Warm Ischemia-Reperfusion-Induced Increase in Pulmonary Capillary Filtration Is Ameliorated by Administration of a Multidrug Resistance-Associated Protein 1 Inhibitor and Leukotriene D4 Antagonist (MK-571) Through Reducing Neutrophil Infiltration and Pulmonary Inflammation and Oxidative Stress in Rats. *Transplant Proc* **47**, 1087-1091, doi:10.1016/j.transproceed.2014.10.061 (2015).
- 18 Kilicoglu, B. *et al.* Ultrastructural view of a promising anti TNF- $\alpha$  agent on hepatic ischaemia reperfusion injury. *Bratisl Lek Listy* **116**, 601-607 (2015).
- 19 Jiménez Pérez, J. C. *et al.* Spironolactone Effect in Hepatic Ischemia/Reperfusion Injury in Wistar Rats. *Oxid Med Cell Longev* **2016**, 3196431, doi:10.1155/2016/3196431 (2016).
- 20 Sano, N. *et al.* New drug delivery system for liver sinusoidal endothelial cells for ischemia-reperfusion injury. *World J Gastroenterol* **21**, 12778-12786, doi:10.3748/wjg.v21.i45.12778 (2015).
- 21 Chang, Y. K., Huang, S. C., Kao, M. C. & Huang, C. J. Cepharanthine alleviates liver injury in a rodent model of limb ischemia-reperfusion. *Acta Anaesthesiol Taiwan*, doi:10.1016/j.aat.2015.11.004 (2015).
- 22 Lucas, M. L., Rhoden, C. R., Rhoden, E. L., Zettler, C. G. & Mattos, A. A. Effects of L-arginine and L-NAME on ischemia-reperfusion in rat liver. *Acta Cir Bras* **30**, 345-352, doi:10.1590/S0102-865020150050000006 (2015).
- 23 Yeh, D. Y., Tung, S. P., Fu, Y. H., Yang, Y. C. & Wang, J. J. Intravenous superoxide dismutase administration reduces contralateral lung injury induced by unilateral lung ischemia and reperfusion in rats through suppression of activity and protein expression of matrix metalloproteases. *Transplant Proc* **47**, 1083-1086, doi:10.1016/j.transproceed.2014.10.060 (2015).

- 24 Yusen, R. D. *et al.* The Registry of the International Society for Heart and Lung Transplantation: Thirty-second Official Adult Lung and Heart-Lung Transplantation Report-2015; Focus Theme: Early Graft Failure. *J Heart Lung Transplant* **34**, 1264-1277, doi:10.1016/j.healun.2015.08.014 (2015).
- 25 Held, P. 1-14. (BioTek Instruments, Inc., Winooski, Vermont., 2012).
- 26 Gawel, S., Wardas, M., Niedworok, E. & Wardas, P. [Malondialdehyde (MDA) as a lipid peroxidation marker]. *Wiad Lek* **57**, 453-455 (2004).
- 27 Beckman, J. S. *et al.* Superoxide dismutase and catalase conjugated to polyethylene glycol increases endothelial enzyme activity and oxidant resistance. *J Biol Chem* **263**, 6884-6892 (1988).
- 28 Carlberg, I. & Mannervik, B. Glutathione reductase. *Methods Enzymol* **113**, 484-490 (1985).
- 29 Nguyen, W. D., Kim, D. H., Alam, H. B., Provido, H. S. & Kirkpatrick, J. R. Polyethylene glycol-superoxide dismutase inhibits lipid peroxidation in hepatic ischemia/reperfusion injury. *Crit Care* **3**, 127-130, doi:10.1186/cc358 (1999).



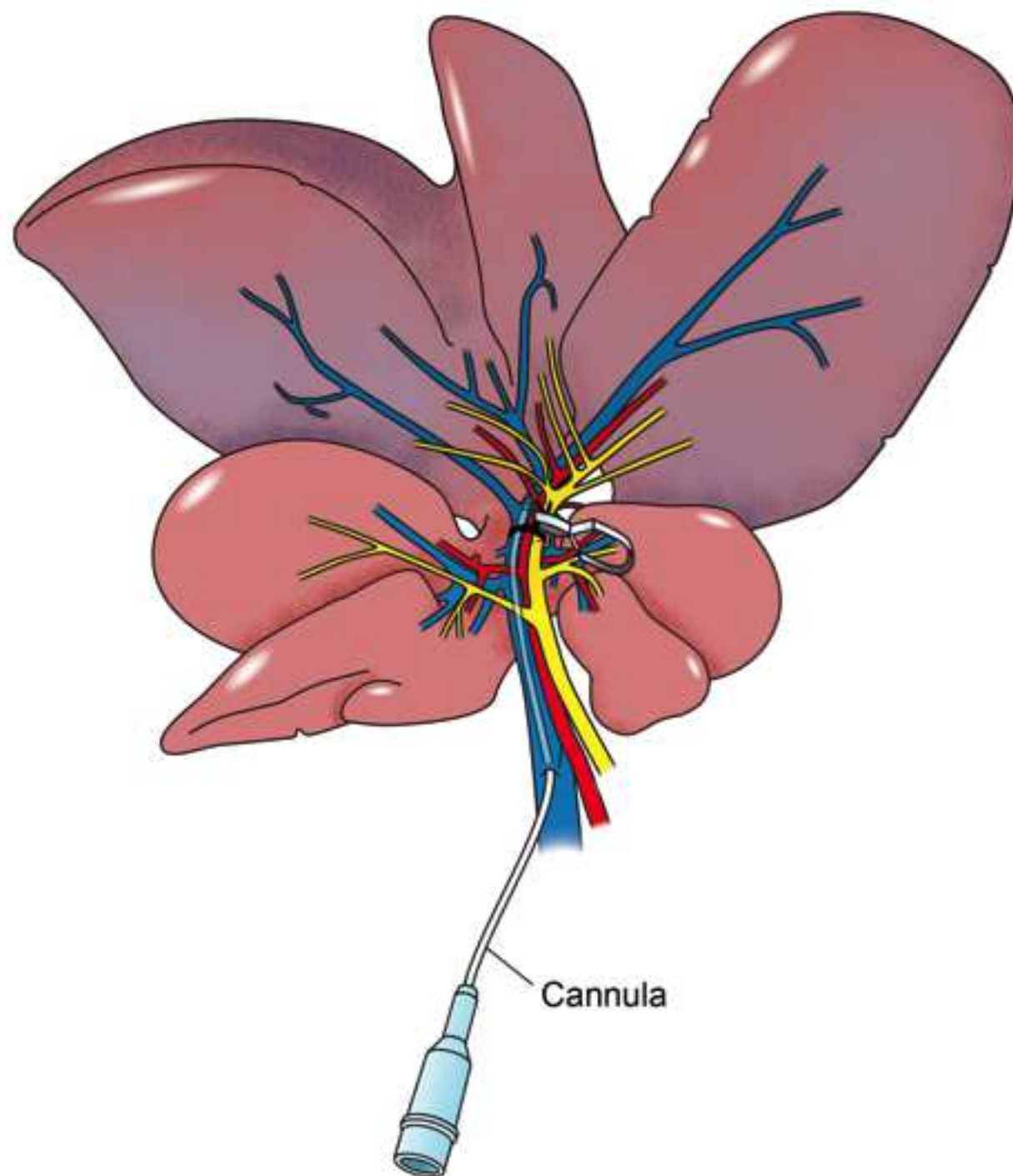




Figure 3

[Click here to download Figure Figure 3 - Instrument Set-up.JPG](#)



Figure 4

[Click here to download Figure 4 - OR Set-up.JPG](#)





Figure 5

[Click here to download Figure Figure 5 - Trimming Hair.JPG](#)

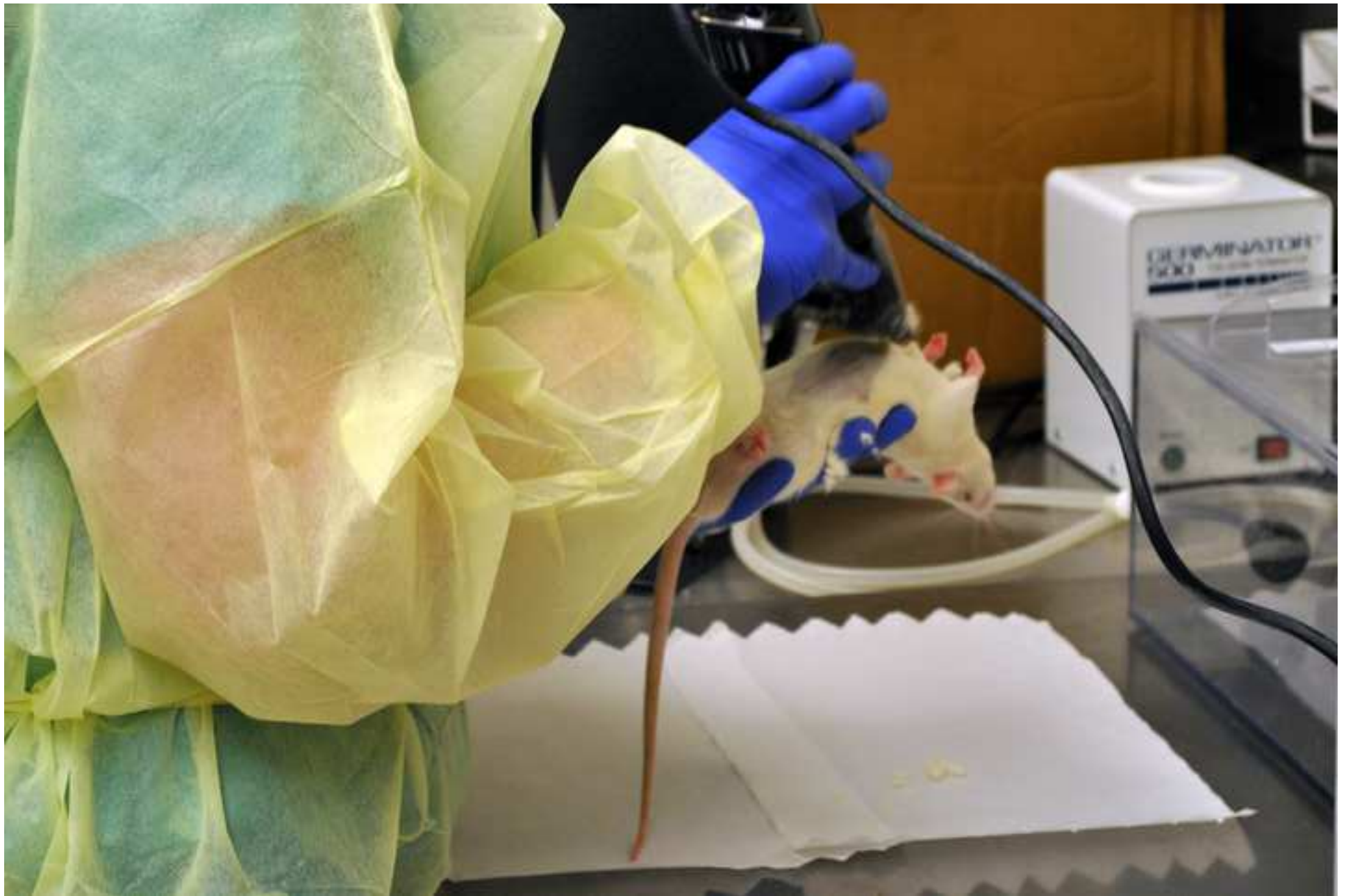




Figure 6

[Click here to download Figure Figure 6 - Immobilization and skin incision.JPG](#)

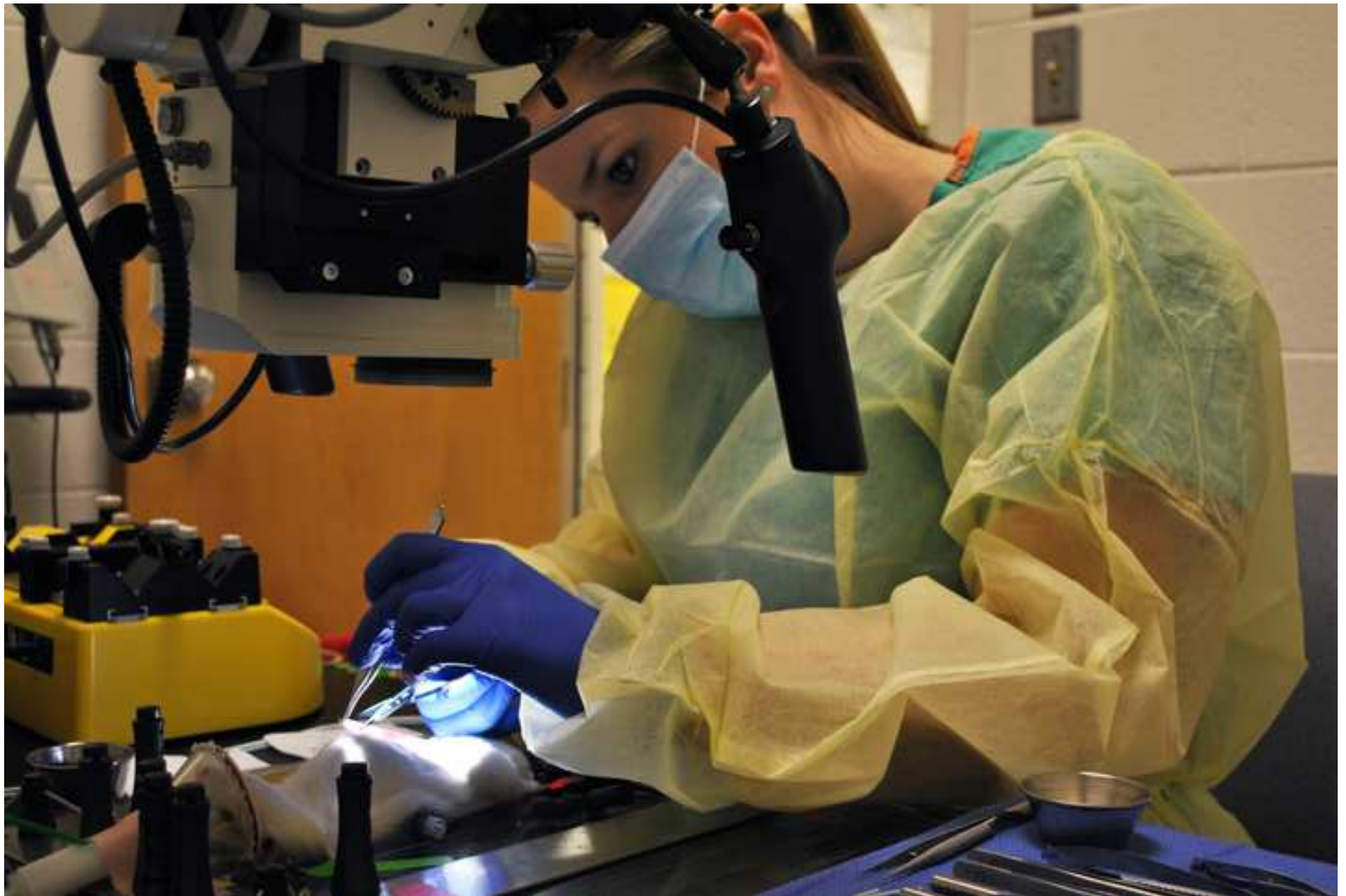


Figure 7

[Click here to download Figure Figure 7 - Rib Retractors and Evisc.JPG](#)

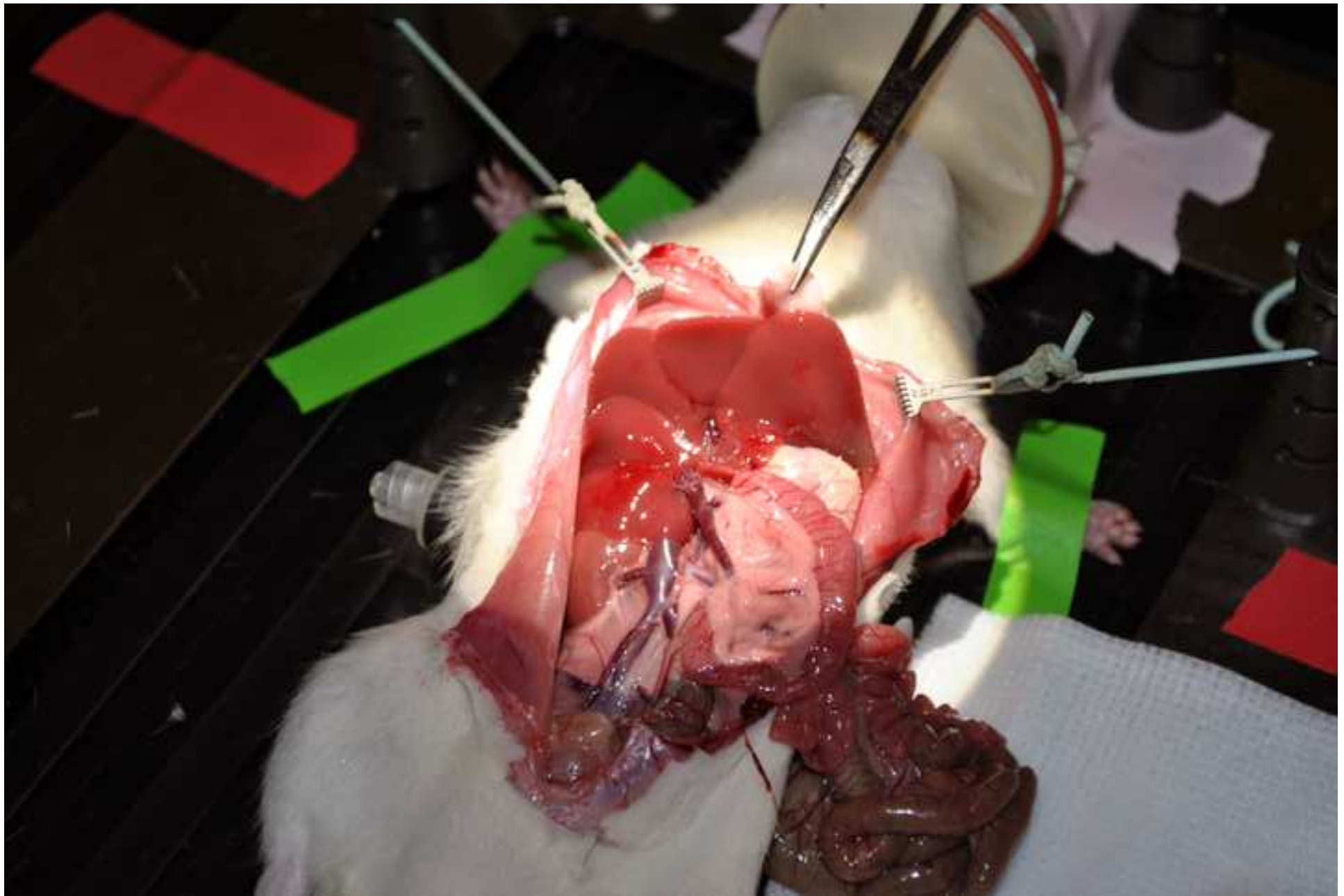




Figure 8

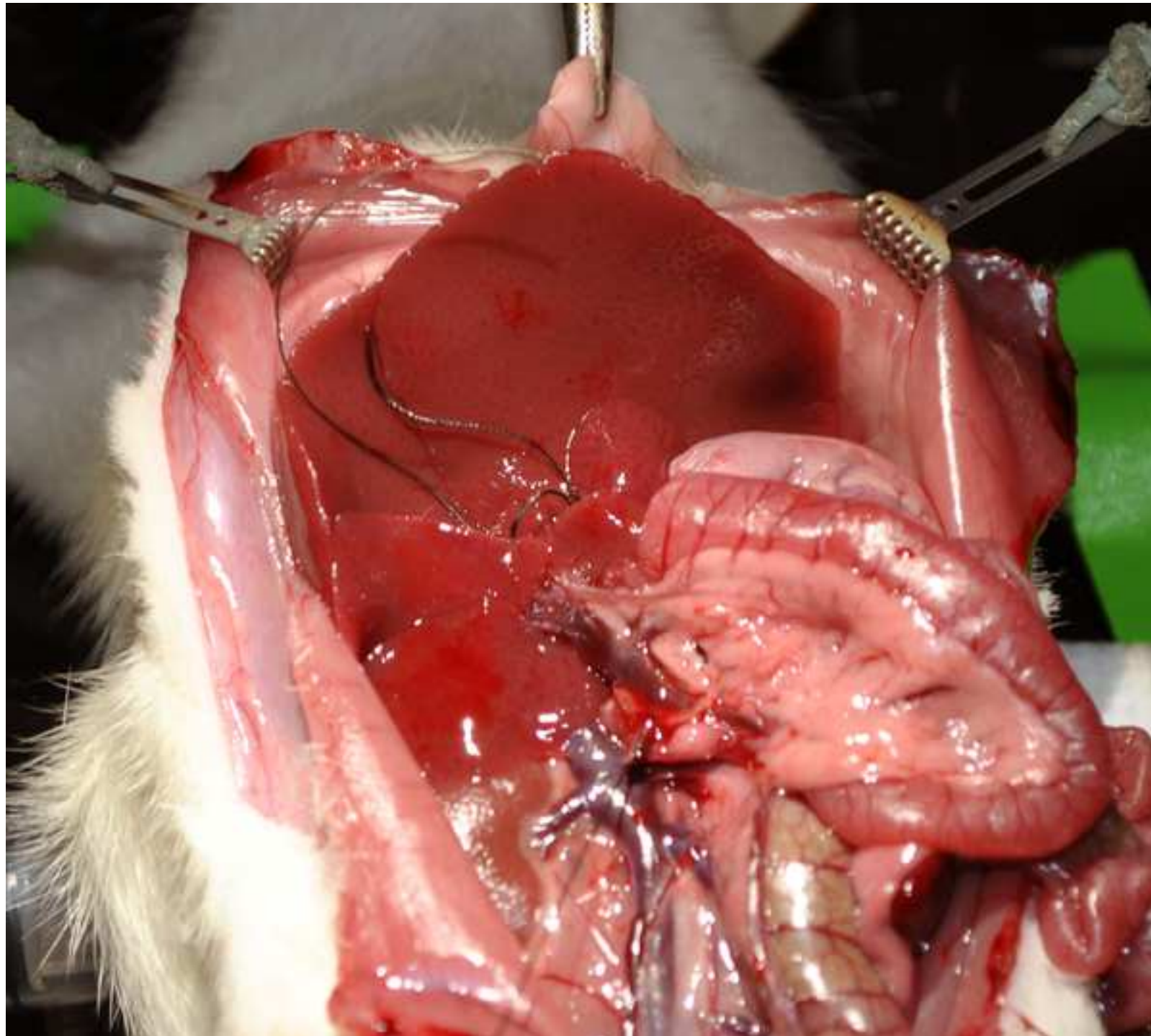


Figure 9

[Click here to download Figure Figure 9 - Blood Draw from IVC.JPG](#)

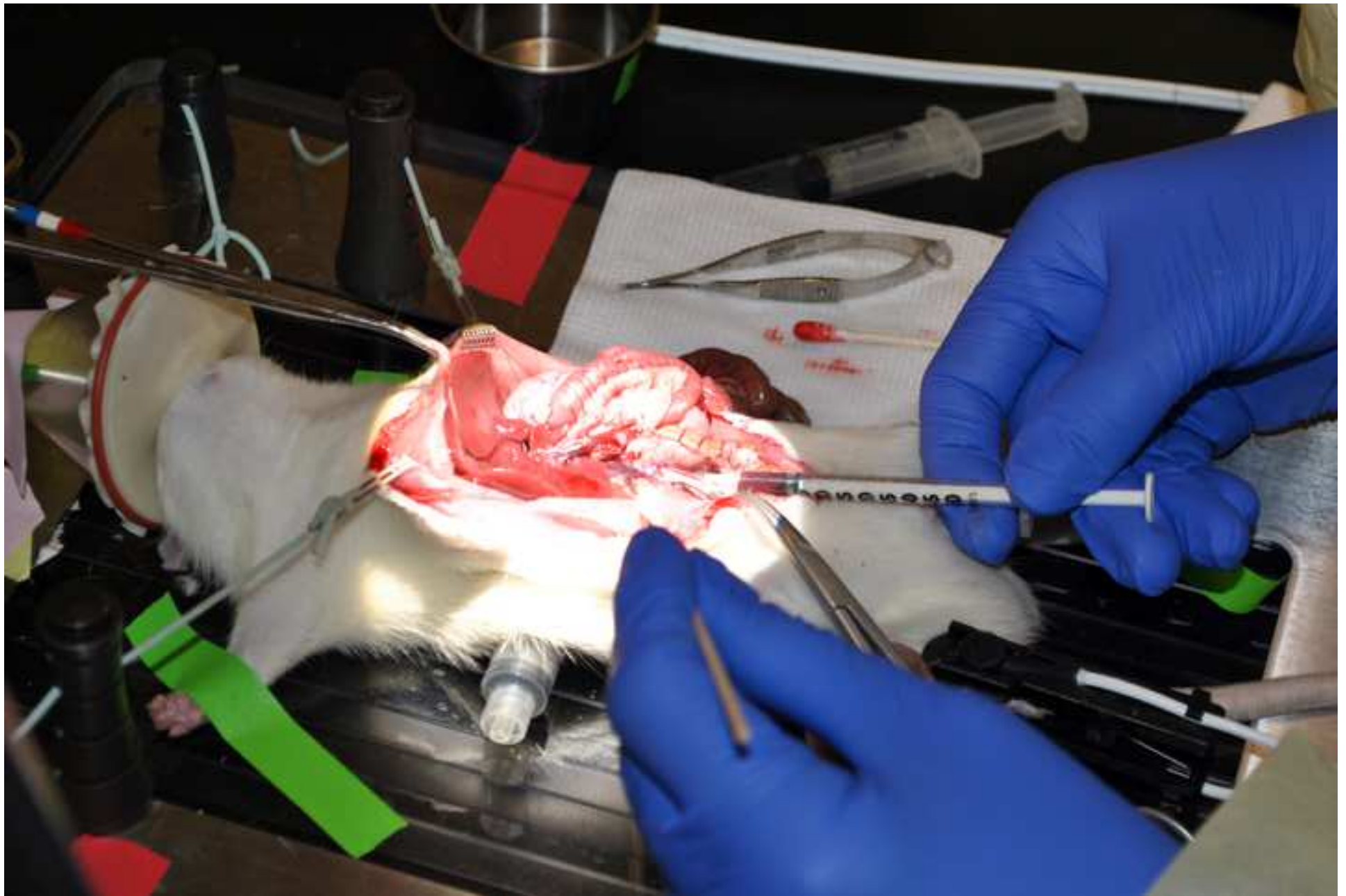




Figure 10

[Click here to download Figure Figure 10 - Tie Off PDV and Retract.JPG](#)

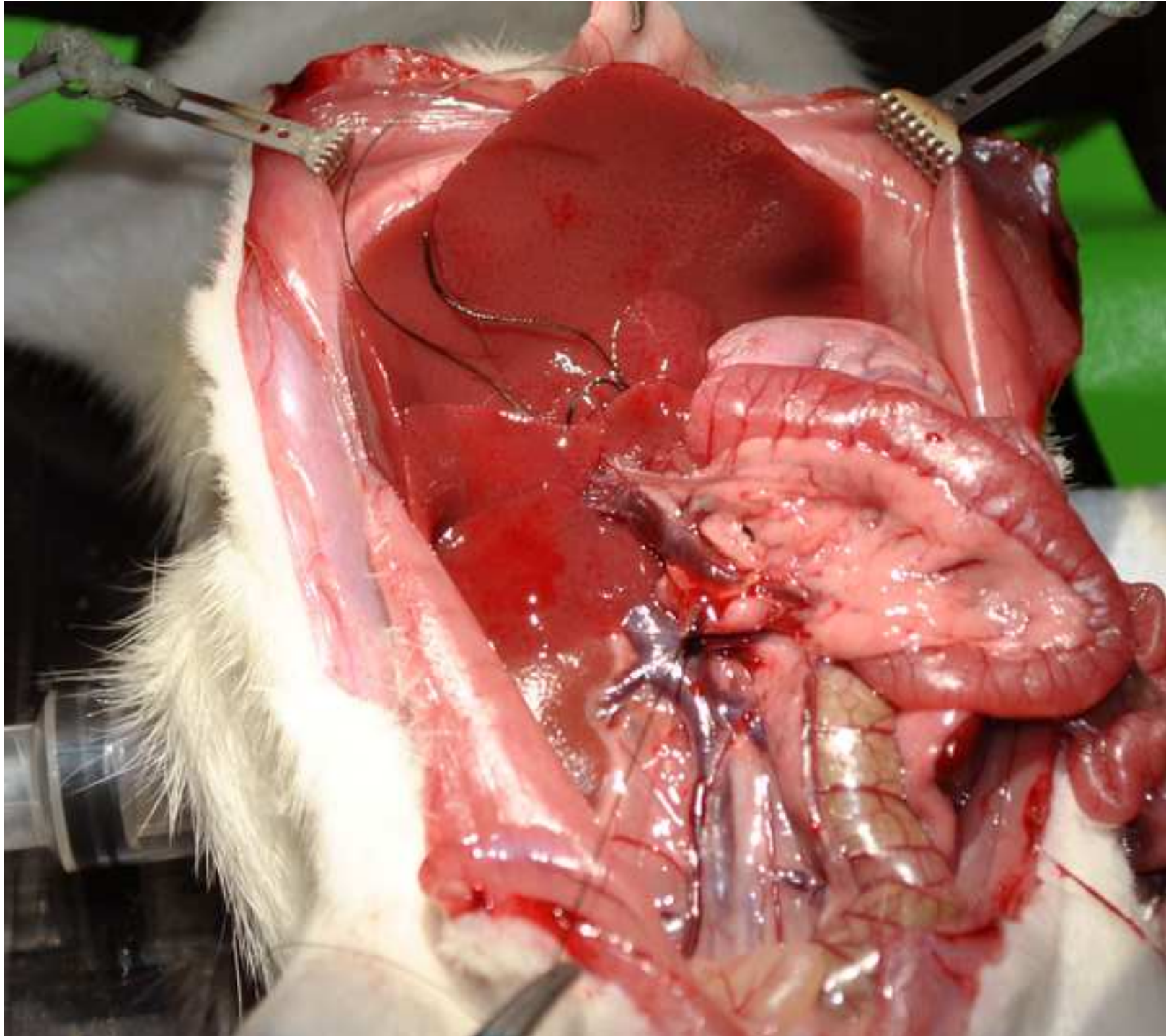


Figure 11

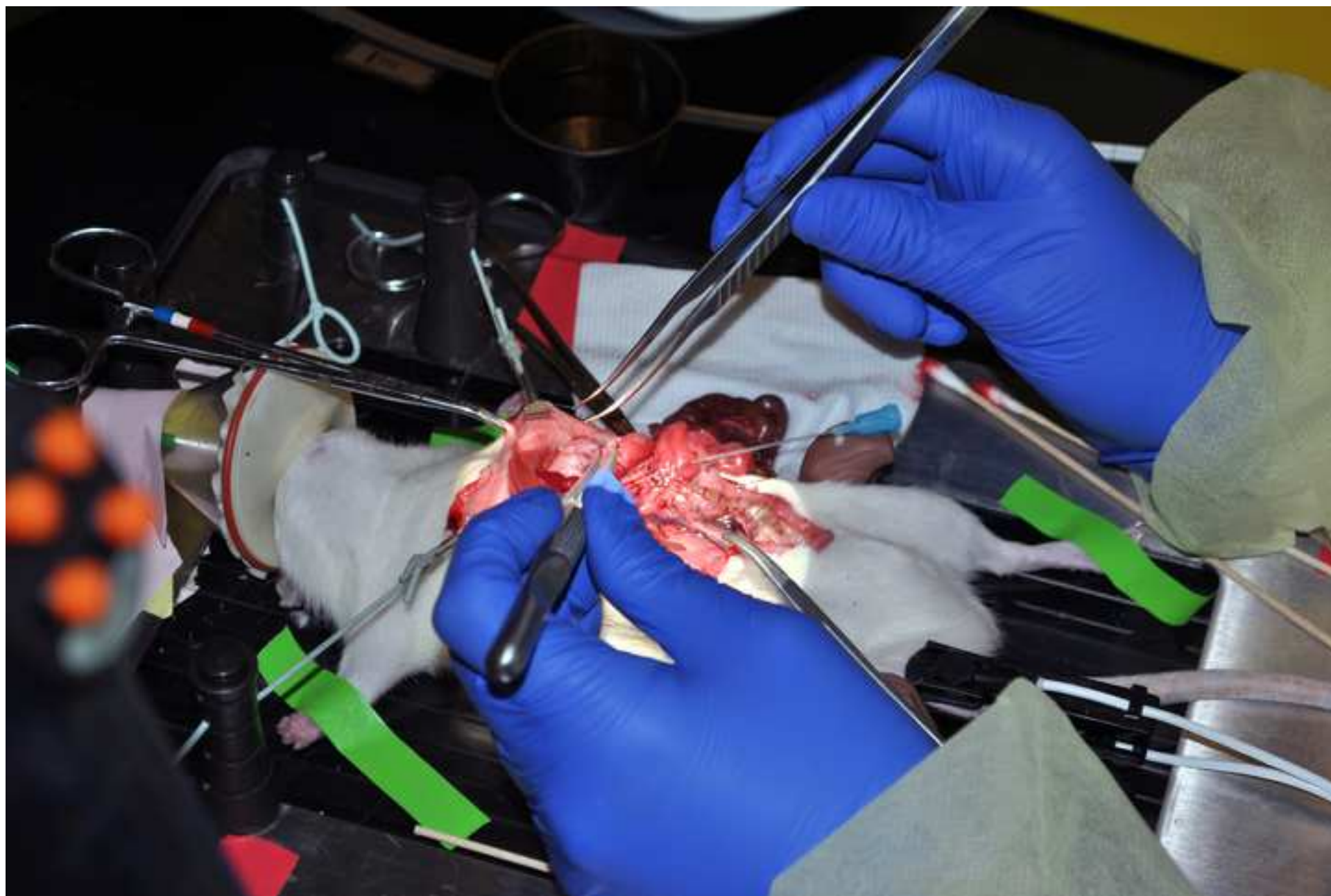
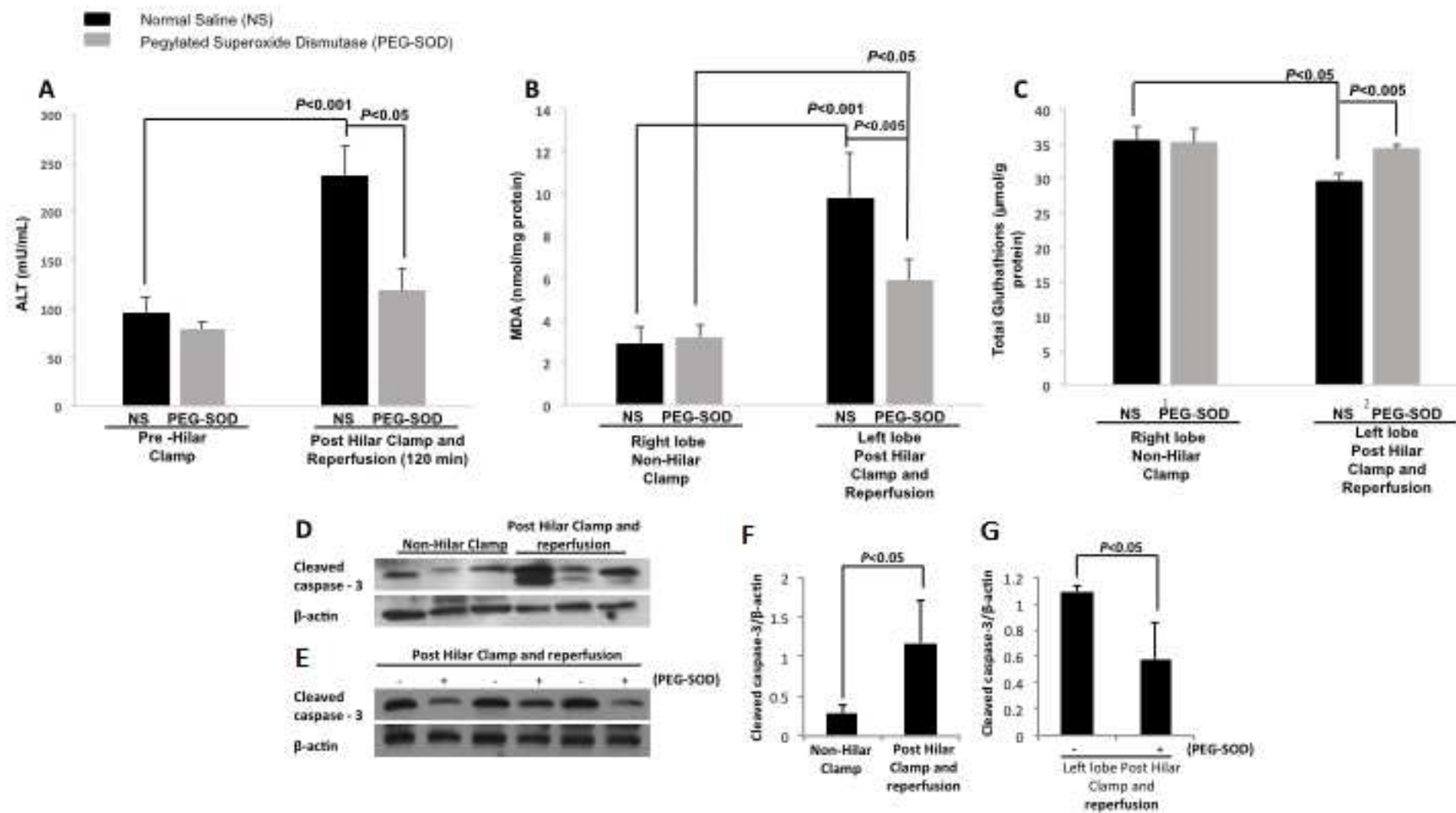




Figure 12



Figure 13

[Click here to download Figure Figure 13.tif](#)



**Table 1: Specific Reagents and Equipment**

<b>Name</b>	<b>Company</b>	<b>Catalog Number</b>
Sprague-Dawley Rat	Harlan Sprague Dawley Inc.	200- 250 grams
Surgical Microscope	Leica	M500-N w/ OHS
Charcoal Canisters	Kent Scientific	SOMNO-2001-8
Isoflurane Molecular Weight 184.5	Piramal Healthcare	
Pressure-Lok Precision Analytical Syringe	Valco Instruments Co, Inc.	SOMNO-10ML
Electrosurgical Unit	Macan	MV-7A
Warming Pad	Braintree Scientific	HHP2
SomnoSuite Small Animal Anesthesia System	Kent Scientific	SS-MVG-Module
PhysioSuite	Kent Scientific	PS-MSTAT-RT
Isoflurane chamber	Kent Scientific	SOMNO-0530LG
SurgiVet	Isotec	CDS 9000 Tabletop
Oxygen	Praxair	98015
27-0 Micro-Cannula	Braintree Scientific	MC-28
Rib retractors	Kent Scientific	INS600240
Polyethylene Glycol - Superoxide Dismutase (P	Sigma Aldrich	S9549 SIGMA
GenieTouch	Kent Scientific	
Normal Saline	Baxter	NDC 0338-0048-04
4x4 Non-Woven Sponges	Criterion	104-2411
Sterile Q-Tips	Henry Schein Animal Health	1009175
U-100 27 Gauge Insulin Syringe	Terumo	22-272328
5mL Syringe	BD	REF 309603
4-0 Braided Silk Suture	Deknatel, Inc.	198737LP
7-0 Braided Silk Suture	Teleflex Medical	REF 103-S
1.8 mL Arcticle Cryogenic Tube	USA Scientific	1418-7410
<b>Microsurgical Instruments</b>		
Small Scissors	Roboz	RS-5610
Large Scissors	S&T	SAA-15
Forceps - Large Angled	S&T	JFCL-7
Forceps - Small Angled	S&T	FRAS-15 RM-8
Clip Applier	ROBOZ	RS-5440
Scissors - non micro	FST 14958-11	14958-11
Forceps - Straight Tip	S&T	FRS-15 RM8TC
Large Microsurgical Clip	Fine Scientific Tools	18055-01
Small Microsurgical Clip	Fine Scientific Tools	18055-01
Small Microsurgical Clip	Fine Scientific Tools	18055-02
Small Microsurgical Clip	Fine Scientific Tools	18055-03
<b>Other Instruments</b>		
Small Mosquito Clamps	Generic	
<b>Analysis</b>		
Alannine aminotransferase (ALT) assay	Biovision	K752-100
Malondialdehyde (MDA) assay	Abcam	ab118970
Glutathione (GSH) assay	Cayman Chemical	7030002

Antibodies - Cleaved Caspase-3 and Actin	Cell Signaling Tecnology	Antibody 9661
ImageJ Software	National Institutes of Health	
RIPA Lysis and Extraction Buffer	Millipore	10-188



1 Alewife Center #200  
Cambridge, MA 02140  
tel. 617.945.9051  
www.jove.com

## ARTICLE AND VIDEO LICENSE AGREEMENT

Title of Article: Method of direct segmental intrathecal delivery using a rat micro-  
 Author(s): Eliza W. Boal, MD; Curtis D. Darnall; Jung-Lye Kim, PhD; Khalid Mumtaz, MBBS,  
Don Hayes, Jr. MD; Ken W. Wushburn, MD; Bryan W. Watson, MD, PhD; Sylvester Bink, MD,  
 Item 1 (check one box): The Author elects to have the Materials be made available (as described at PhD  
<http://www.jove.com/publish>) via: ☐ Standard Access ☒ Open Access

Item 2 (check one box):

- ☒ The Author is NOT a United States government employee.
- ☐ The Author is a United States government employee and the Materials were prepared in the course of his or her duties as a United States government employee.
- ☐ The Author is a United States government employee but the Materials were NOT prepared in the course of his or her duties as a United States government employee.

### ARTICLE AND VIDEO LICENSE AGREEMENT

1. **Defined Terms.** As used in this Article and Video License Agreement, the following terms shall have the following meanings: "Agreement" means this Article and Video License Agreement; "Article" means the article specified on the last page of this Agreement, including any associated materials such as texts, figures, tables, artwork, abstracts, or summaries contained therein; "Author" means the author who is a signatory to this Agreement; "Collective Work" means a work, such as a periodical issue, anthology or encyclopedia, in which the Materials in their entirety in unmodified form, along with a number of other contributions, constituting separate and independent works in themselves, are assembled into a collective whole; "CRC License" means the Creative Commons Attribution-Non Commercial-No Derivs 3.0 Unported Agreement, the terms and conditions of which can be found at: <http://creativecommons.org/licenses/by-nc-nd/3.0/legalcode>; "Derivative Work" means a work based upon the Materials or upon the Materials and other pre-existing works, such as a translation, musical arrangement, dramatization, fictionalization, motion picture version, sound recording, art reproduction, abridgment, condensation, or any other form in which the Materials may be recast, transformed, or adapted; "Institution" means the institution, listed on the last page of this Agreement, by which the Author was employed at the time of the creation of the Materials; "JoVE" means MyJoVE Corporation, a Massachusetts corporation and the publisher of *The Journal of Visualized Experiments*; "Materials" means the Article and / or the Video; "Parties" means the Author and JoVE; "Video" means any video(s) made by the Author, alone or in conjunction with any other parties, or by JoVE or its affiliates or agents, individually or in collaboration with the Author or any other parties, incorporating all or any portion of the Article, and in which the Author may or may not appear.

2. **Background.** The Author, who is the author of the Article, in order to ensure the dissemination and protection of the Article, desires to have the JoVE publish the Article and create and transmit videos based on the Article. In furtherance of such goals, the Parties desire to memorialize in this Agreement the respective rights of each Party in and to the Article and the Video.

3. **Grant of Rights in Article.** In consideration of JoVE agreeing to publish the Article, the Author hereby grants to JoVE, subject to Sections 4 and 7 below, the exclusive, royalty-free, perpetual (for the full term of copyright in the Article, including any extensions thereto) license (a) to publish, reproduce, distribute, display and store the Article in all forms, formats and media whether now known or hereafter developed (including without limitation in print, digital and electronic form) throughout the world, (b) to translate the Article into other languages, create adaptations, summaries or extracts of the Article or other Derivative Works (including, without limitation, the Video) or Collective Works based on all or any portion of the Article and exercise all of the rights set forth in (a) above in such translations, adaptations, summaries, extracts, Derivative Works or Collective Works and (c) to license others to do any or all of the above. The foregoing rights may be exercised in all media and formats, whether now known or hereafter devised, and include the right to make such modifications as are technically necessary to exercise the rights in other media and formats. If the "Open Access" box has been checked in Item 1 above, JoVE and the Author hereby grant to the public all such rights in the Article as provided in, but subject to all limitations and requirements set forth in, the CRC License.

## ARTICLE AND VIDEO LICENSE AGREEMENT

4. **Retention of Rights in Article.** Notwithstanding the exclusive license granted to JoVE in Section 3 above, the Author shall, with respect to the Article, retain the non-exclusive right to use all or part of the Article for the non-commercial purpose of giving lectures, presentations or teaching classes, and to post a copy of the Article on the Institution's website or the Author's personal website, in each case provided that a link to the Article on the JoVE website is provided and notice of JoVE's copyright in the Article is included. All non-copyright intellectual property rights in and to the Article, such as patent rights, shall remain with the Author.

5. **Grant of Rights in Video – Standard Access.** This Section 5 applies if the "Standard Access" box has been checked in Item 1 above or if no box has been checked in Item 1 above. In consideration of JoVE agreeing to produce, display or otherwise assist with the Video, the Author hereby acknowledges and agrees that, Subject to Section 7 below, JoVE is and shall be the sole and exclusive owner of all rights of any nature, including, without limitation, all copyrights, in and to the Video. To the extent that, by law, the Author is deemed, now or at any time in the future, to have any rights of any nature in or to the Video, the Author hereby disclaims all such rights and transfers all such rights to JoVE.

6. **Grant of Rights in Video – Open Access.** This Section 6 applies only if the "Open Access" box has been checked in Item 1 above. In consideration of JoVE agreeing to produce, display or otherwise assist with the Video, the Author hereby grants to JoVE, subject to Section 7 below, the exclusive, royalty-free, perpetual (for the full term of copyright in the Article, including any extensions thereto) license (a) to publish, reproduce, distribute, display and store the Video in all forms, formats and media whether now known or hereafter developed (including without limitation in print, digital and electronic form) throughout the world, (b) to translate the Video into other languages, create adaptations, summaries or extracts of the Video or other Derivative Works or Collective Works based on all or any portion of the Video and exercise all of the rights set forth in (a) above in such translations, adaptations, summaries, extracts, Derivative Works or Collective Works and (c) to license others to do any or all of the above. The foregoing rights may be exercised in all media and formats, whether now known or hereafter devised, and include the right to make such modifications as are technically necessary to exercise the rights in other media and formats. For any Video to which this Section 6 is applicable, JoVE and the Author hereby grant to the public all such rights in the Video as provided in, but subject to all limitations and requirements set forth in, the CRC License.

7. **Government Employees.** If the Author is a United States government employee and the Article was prepared in the course of his or her duties as a United States government employee, as indicated in Item 2 above, and any of the licenses or grants granted by the Author hereunder exceed the scope of the 17 U.S.C. 403, then the rights granted hereunder shall be limited to the maximum rights permitted under such

statute. In such case, all provisions contained herein that are not in conflict with such statute shall remain in full force and effect, and all provisions contained herein that do so conflict shall be deemed to be amended so as to provide to JoVE the maximum rights permissible within such statute.

8. **Likeness, Privacy, Personality.** The Author hereby grants JoVE the right to use the Author's name, voice, likeness, picture, photograph, image, biography and performance in any way, commercial or otherwise, in connection with the Materials and the sale, promotion and distribution thereof. The Author hereby waives any and all rights he or she may have, relating to his or her appearance in the Video or otherwise relating to the Materials, under all applicable privacy, likeness, personality or similar laws.

9. **Author Warranties.** The Author represents and warrants that the Article is original, that it has not been published, that the copyright interest is owned by the Author (or, if more than one author is listed at the beginning of this Agreement, by such authors collectively) and has not been assigned, licensed, or otherwise transferred to any other party. The Author represents and warrants that the author(s) listed at the top of this Agreement are the only authors of the Materials. If more than one author is listed at the top of this Agreement and if any such author has not entered into a separate Article and Video License Agreement with JoVE relating to the Materials, the Author represents and warrants that the Author has been authorized by each of the other such authors to execute this Agreement on his or her behalf and to bind him or her with respect to the terms of this Agreement as if each of them had been a party hereto as an Author. The Author warrants that the use, reproduction, distribution, public or private performance or display, and/or modification of all or any portion of the Materials does not and will not violate, infringe and/or misappropriate the patent, trademark, intellectual property or other rights of any third party. The Author represents and warrants that it has and will continue to comply with all government, institutional and other regulations, including, without limitation all institutional, laboratory, hospital, ethical, human and animal treatment, privacy, and all other rules, regulations, laws, procedures or guidelines, applicable to the Materials, and that all research involving human and animal subjects has been approved by the Author's relevant institutional review board.

10. **JoVE Discretion.** If the Author requests the assistance of JoVE in producing the Video in the Author's facility, the Author shall ensure that the presence of JoVE employees, agents or independent contractors is in accordance with the relevant regulations of the Author's institution. If more than one author is listed at the beginning of this Agreement, JoVE may, in its sole discretion, elect not take any action with respect to the Article until such time as it has received complete, executed Article and Video License Agreements from each such author. JoVE reserves the right, in its absolute and sole discretion and without giving any reason therefore, to accept or decline any work submitted to JoVE. JoVE and its employees, agents and independent contractors shall have

## ARTICLE AND VIDEO LICENSE AGREEMENT

full, unfettered access to the facilities of the Author or of the Author's institution as necessary to make the Video, whether actually published or not. JoVE has sole discretion as to the method of making and publishing the Materials, including, without limitation, to all decisions regarding editing, lighting, filming, timing of publication, if any, length, quality, content and the like.

11. **Indemnification.** The Author agrees to indemnify JoVE and/or its successors and assigns from and against any and all claims, costs, and expenses, including attorney's fees, arising out of any breach of any warranty or other representations contained herein. The Author further agrees to indemnify and hold harmless JoVE from and against any and all claims, costs, and expenses, including attorney's fees, resulting from the breach by the Author of any representation or warranty contained herein or from allegations or instances of violation of intellectual property rights, damage to the Author's or the Author's institution's facilities, fraud, libel, defamation, research, equipment, experiments, property damage, personal injury, violations of institutional, laboratory, hospital, ethical, human and animal treatment, privacy or other rules, regulations, laws, procedures or guidelines, liabilities and other losses or damages related in any way to the submission of work to JoVE, making of videos by JoVE, or publication in JoVE or elsewhere by JoVE. The Author shall be responsible for, and shall hold JoVE harmless from, damages caused by lack of sterilization, lack of cleanliness or by contamination due to the making of a video by JoVE its employees, agents or independent contractors. All sterilization, cleanliness or decontamination procedures shall be solely the responsibility of the Author and shall be undertaken at the Author's


expense. All indemnifications provided herein shall include JoVE's attorney's fees and costs related to said losses or damages. Such indemnification and holding harmless shall include such losses or damages incurred by, or in connection with, acts or omissions of JoVE, its employees, agents or independent contractors.

12. **Fees.** To cover the cost incurred for publication, JoVE must receive payment before production and publication the Materials. Payment is due in 21 days of invoice. Should the Materials not be published due to an editorial or production decision, these funds will be returned to the Author. Withdrawal by the Author of any submitted Materials after final peer review approval will result in a US\$1,200 fee to cover pre-production expenses incurred by JoVE. If payment is not received by the completion of filming, production and publication of the Materials will be suspended until payment is received.

13. **Transfer, Governing Law.** This Agreement may be assigned by JoVE and shall inure to the benefits of any of JoVE's successors and assignees. This Agreement shall be governed and construed by the internal laws of the Commonwealth of Massachusetts without giving effect to any conflict of law provision thereunder. This Agreement may be executed in counterparts, each of which shall be deemed an original, but all of which together shall be deemed to me one and the same agreement. A signed copy of this Agreement delivered by facsimile, e-mail or other means of electronic transmission shall be deemed to have the same legal effect as delivery of an original signed copy of this Agreement.

A signed copy of this document must be sent with all new submissions. Only one Agreement required per submission.

### CORRESPONDING AUTHOR:

Name: Sylvester Blum, MD, PhD  
Department: The Department of Surgery, Division of Transplant  
Institution: The Ohio State University Wexner Medical Center  
Article Title: Method of direct segmental intraperitoneal delivery using a rat microcatheter  
Signature:  Date: 3/10/2016

Please submit a signed and dated copy of this license by one of the following three methods:

- 1) Upload a scanned copy of the document as a pdf on the JoVE submission site;
- 2) Fax the document to +1.866.381.2236;
- 3) Mail the document to JoVE / Attn: JoVE Editorial / 1 Alewife Center #200 / Cambridge, MA 02139

For questions, please email [submissions@jove.com](mailto:submissions@jove.com) or call +1.617.945.9051



Dear Editors and Reviewers,

Thank you for your comments and suggestions. Please see point by point responses below **in red**.

**Editorial comments:**

The manuscript has been modified by the Science Editor to comply with the JoVE formatting standard. Please maintain the current formatting throughout the manuscript. The updated manuscript (54729\_R2\_033016.docx) is located in your Editorial Manager account. In the revised PDF submission, there is a hyperlink for downloading the .docx file. Please download the .docx file and use this updated version for any future revisions.

Changes made by the Science Editor:

1. There have been edits made to the manuscript.

**Thank you for making the edits.**

Changes to be made by the Author(s):

1. Please take this opportunity to thoroughly proofread the manuscript to ensure that there are no spelling or grammar issues. The JoVE editor will not copy-edit your manuscript and any errors in the submitted revision may be present in the published version.
2. There are two minor typos: Introduction, line 138 – Figure 1 does not have panels A-D; and Line 497, “hold” should be “hole.”

**Figure 1 and 2 were mislabeled. Figure 1 should be the multipanel figure that was labeled Figure 2 and Figure 2 should be the single panel figure that was labeled Figure 1. They were relabeled and reuploaded on the JoVE submission site.**

**The typo on line 471 was fixed – “hold,” was changed to, “hole.”**

**Reviewers' comments:**

**Reviewer #1:**

*Manuscript Summary:*

This manuscript describes a small series of experiments with a rat liver hilar clamp model to study the effect of pegylated-superoxide dismutase (PEG-SOD) in reducing the effects of ischemia-reperfusion injury.

*Major Concerns:*

No major concerns identified

*Minor Concerns:*

Minor concerns include:

1) The experimental groups each utilize a very low "N" which increases concern about the validity of the statistical analyses. The authors should explain why such a low "N" was used and discuss the potential impact this has on their data.

Although a low N was used we were able to demonstrate the significant effect that PEG-SOD has on ameliorating ischemia-reperfusion injury in the liver. There was also low animal intervariability. We have utilized this model with a number of potential molecules in our lab and it is reproducible.

2) The authors should elaborate on their reasons for selecting to evaluate PEG-SOD in these experiments.

We elaborated on our selection of PEG-SOD in a new paragraph in the discussion section of the manuscript.

3) The authors should comment on the impact of PEG-SOD on pathologic changes in the liver tissue. Did it reduce histologic evidence of liver injury?

In our experience using this and similar models the one hour long period of ischemia and two hour long period of reperfusion is not of sufficient duration to produce dramatic histologic changes, although as demonstrated here there is clearly a significant impact on biochemical markers.

*Additional Comments to Authors:*

N/A

## **Reviewer #2:**

*Manuscript Summary:*

Beal et al present a novel technique of partial portal vein clamping and cannulation in a rat model. The authors found that injection of PEG-SOD directly into the portal vein branch of the left lobe decreases liver injury after ischemia and reperfusion.

*Major Concerns:*

No major concerns

*Minor Concerns:*

The paper is well written and describes an important novel technique of rat hepatic ischemia and reperfusion.

1. The authors should provide H&E staining of the liver tissue following ischemia and reperfusion.

In our experience using this and similar models the one hour long period of ischemia and two hour long period of reperfusion is not of sufficient duration to

produce dramatic histologic changes, although as demonstrated here there is clearly a significant impact on biochemical markers.

2. The authors should discuss if the model is suitable for tumor cell injection in specific liver lobes.

Although we believe that this model could be used for tumor cell injection, our lab is not tumor focused and we have not experimented with this in particular. This would certainly be an area for further adaptation of the model described here and a fruitful area for further experimentation.

3. Beal et al should discuss possible implications for the investigation of liver regeneration.

This model is not directly designed to test liver regeneration, but short-term response to ischemia-reperfusion injury. With longer ischemic times there would likely be increased injury and it may be possible to study liver regeneration. A sentence in regards to this has been added.

*Additional Comments to Authors:*

N/A

Additionally, we updated the acknowledgement statement to more accurately reflect the funding support.

Thank you,

Eliza W. Beal, MD



Nam Nguyen, PhD  
Science Editor  
JoVE  
1 Alewife Center, Suite 200  
Cambridge, MA 02140

March 28, 2016

Dear Dr. Nguyen,

Thank you for your comments and revisions.

1. We have taken this opportunity to thoroughly proofread the manuscript to ensure that there are no spelling or grammar issues. We understand that the JoVE editor will not copy-edit our manuscript and any errors in the submitted revision may be present in the published version.

2. We have used g instead of RPM for centrifugation speeds.

3. We apologize, but the incorrect figures were submitted for figures 1 and 2 and have been resubmitted correctly. Thank you for pointing out this error. The text explicitly describing Figure 13 was added back into the figure legend. Please let us know if there is a specific format we should have this in.

4.

- Reference 4 and 5 were reformatted
- IVC was defined at its' first appearance (3.13) and later definitions were removed
- We apologize, but the incorrect figures were submitted for figures 1 and 2 and have been resubmitted correctly. Thank you for pointing out this error.
- In 3.2 and in all other appearances "mg" were converted to "g"

5.

- the "its'" on line 90 and 436 were changed to "its"
- the run-on sentence in 7.3 was corrected
- the error, "by manually by feeling it," was changed to, "manually by feeling it"
- 3.8 description of how to place rib retractors was added
- 3.11 description of how to make a window was added
- 3.13 has been clarified
- 3.14 has been clarified
- 3.17 the catheter is inserted past the bifurcation of the right and left portal vein and this was added to this step, 3.18 also talks about positioning and confirmation of positioning
- 3.20 the infusion should be started as close as possible to the start of ischemia. This was added to this step.
- 5.1 this is one hour from the start of the ischemic time, this was added to this step
- 6.1 if there is continued bleeding then manual gentle pressure should be applied to the IVC with a sterile cotton swab or small section cut from gauze

7.3 the samples should be as large as possible and their size should be limited only by the amount of available liver tissue

8.2 The lysis buffer was the RIPA buffer from Millipore. Information regarding the type of buffer (RIPA) was added to this step. This is available from several manufacturers. It was also added to the equipment table.

6. q-tip was removed and replaced with sterile cotton swab

Thank you,

Dr. Eliza W. Beal and Dr. Sylvester M. Black