

Journal of Visualized Experiments

Symmetric Bi-Hemispheric Postmortem Brain Cutting to Study Healthy and Pathological Brain Conditions in Humans.

--Manuscript Draft--

Manuscript Number:	JoVE54602R3
Full Title:	Symmetric Bi-Hemispheric Postmortem Brain Cutting to Study Healthy and Pathological Brain Conditions in Humans.
Article Type:	Invited Methods Article - JoVE Produced Video
Keywords:	Human brain, hemispheric specialization/lateralization, neuropsychiatric illnesses, neurodegenerative disorders, clinicopathologic correlations, symmetric macro- and micro- dissection, biomolecular and neuroimaging analyses.
Manuscript Classifications:	1.10: Tissues; 1.8: Nervous System; 3.23: Pathological Conditions, Signs and Symptoms; 6.3: Mental Disorders
Corresponding Author:	Diego Iacono Biomedical Research Institute of New Jersey Cedar Knolls, NJ UNITED STATES
Corresponding Author Secondary Information:	
Corresponding Author E-Mail:	Diego.iacono@atlantichalth.org
Corresponding Author's Institution:	Biomedical Research Institute of New Jersey
Corresponding Author's Secondary Institution:	
First Author:	Diego Iacono
First Author Secondary Information:	
Other Authors:	Maria Geraci-Erck
	Hui Peng
	John Paul Bouffard
Order of Authors Secondary Information:	
Abstract:	<p>Neuropathologists, at times, feel intimidated by the amount of knowledge needed to generate definitive diagnoses for complex neuropsychiatric phenomena described in those patients for which a brain autopsy has been requested. Although the advancements of biomedical sciences and neuroimaging have revolutionized the neuropsychiatric field, they also generated the misleading idea that brain autopsies have only a confirmatory value. This false idea created a drastic reduction of autopsy rates and consequently a reduced possibility to perform more detailed and extensive neuropathologic investigations, which are still necessary to comprehend numerous normal and pathologic aspects yet unknown of the human brain. The traditional inferential method of correlation between observed neuropsychiatric phenomena and corresponding localization/characterization of their possible neurohistological correlates continues to have an undeniable value. In the context of neuropsychiatric diseases, the traditional clinico-pathologic method is still the best possible methodology (and often the only available), to link unique neuropsychiatric features to their corresponding neuropathologic substrates since it relies specifically upon the direct physical assessment of brain tissues. The assessment of postmortem brains is based on brain cutting procedures that present, however, variations across different neuropathology centers. In fact, brain cuttings are performed in a relatively extensive and systematic way as based on the various clinical and academic contingencies present in each institution. A more anatomically-inclusive and symmetric bi-hemispheric brain cutting methodology should at least be used for research purposes in human neuropathology to investigate, in depth, normal and pathologic conditions coherently with the peculiarities of the human brain (i.e. hemispheric specialization and</p>

	lateralization for specific functions). Such a method would provide a more comprehensive collection of neuropathologically well-characterized brains available for current and future biotechnological and neuroimaging techniques. We describe a symmetric bi-hemispheric brain cutting procedure able to investigate hemispheric differences in human brain pathologies and use current as future biomolecular/neuroimaging techniques.
Author Comments:	See attached file: 54602_R2_Answers to Editor and Reviewers_DI
Additional Information:	
Question	Response
If this article needs to be "in-press" by a certain date to satisfy grant requirements, please indicate the date below and explain in your cover letter.	12-31-2016

TITLE:

Symmetric Bi-Hemispheric Postmortem Brain Cutting to Study Healthy and Pathological Brain Conditions in Humans

AUTHORS:

Diego Iacono

Neuropathology Research, Biomedical Research Institute of New Jersey, BRInj

140 East Hanover Avenue

Cedar Knolls, NJ 07927, USA

iacono@brinj.org

Diego.Iacono@atlantichhealth.org

Maria Geraci-Erck

Neuropathology Research, Biomedical Research Institute of New Jersey, BRInj

140 East Hanover Avenue

Cedar Knolls, NJ 07927, USA

Geraci-Erck@brinj.org

Hui Peng

Neuropathology Research, Biomedical Research Institute of New Jersey, BRInj

140 East Hanover Avenue

Cedar Knolls, NJ 07927, USA

Hui.Peng@atlantichhealth.org

John Paul Bouffard

Department of Pathology, Atlantic Health System, AHS

Overlook Medical Center

99 Beauvoir Ave, Summit, NJ 07928, USA

John-Paul.Bouffard@atlantichhealth.org

CORRESPONDING AUTHOR:

Diego Iacono

Phone: (001) 973-9987046

Fax: (001) 973-6058085

KEYWORDS:

Human brain, hemispheric specialization/lateralization, neuropsychiatric illnesses, neurodegenerative disorders, clinicopathologic correlations, symmetric macro- and micro-dissection, biomolecular and neuroimaging analyses.

SHORT ABSTRACT:

Organized brain cutting procedures are necessary to correlate specific neuropsychiatric phenomena with definitive neuropathologic diagnoses. Brain cuttings are performed differently based on various clinico-academic contingencies. This protocol describes a symmetric bi-hemispheric brain cutting procedure to investigate hemispheric differences in human brain pathologies and to maximize current and future biomolecular/neuroimaging techniques.

LONG ABSTRACT:

Neuropathologists, at times, feel intimidated by the amount of knowledge needed to generate definitive diagnoses for complex neuropsychiatric phenomena described in those patients for whom a brain autopsy has been requested. Although the advancements of biomedical sciences and neuroimaging have revolutionized the neuropsychiatric field, they have also generated the misleading idea that brain autopsies have only a confirmatory value. This false idea created a drastic reduction of autopsy rates and, consequently, a reduced possibility to perform more detailed and extensive neuropathological investigations, which are necessary to comprehend numerous normal and pathological aspects yet unknown of the human brain. The traditional inferential method of correlation between observed neuropsychiatric phenomena and corresponding localization/characterization of their possible neurohistological correlates continues to have an undeniable value. In the context of neuropsychiatric diseases, the traditional clinicopathological method is still the best possible methodology (and often the only available) to link unique neuropsychiatric features to their corresponding neuropathological substrates, since it relies specifically upon the direct physical assessment of brain tissues. The assessment of postmortem brains is based on brain cutting procedures that vary across different neuropathology centers. Brain cuttings are performed in a relatively extensive and systematic way based on the various clinical and academic contingencies present in each institution. A more anatomically-inclusive and symmetric bi-hemispheric brain cutting methodology should at least be used for research purposes in human neuropathology to coherently investigate, in depth, normal and pathological conditions with the peculiarities of the human brain (*i.e.*, hemispheric specialization and lateralization for specific functions). Such a method would provide a more comprehensive collection of neuropathologically well-characterized brains available for current and future biotechnological and neuroimaging techniques. We describe a symmetric bi-hemispheric brain cutting procedure for the investigation of hemispheric differences in human brain pathologies and for use with current as well as future biomolecular/neuroimaging techniques.

INTRODUCTION:

Neuropathologists have the scientific privilege, intellectual honor, and diagnostic obligation to assess human brains. For many decades, detailed clinical descriptions of brain diseases and major efforts to individuate their possible neurohistological correlates in human postmortem brains have been undertaken. Historically, those efforts represented the most productive modality by which the medical sciences, and neurology in particular, advanced in the modern era. Thanks to previous eminent neuropathologists and their dedication, determination, scholarship, and astonishing capacity to discriminate between normal and abnormal brain tissues (often using very rudimentary tools), we can now investigate and target diseases such as Alzheimer-Perusini's disease (unfairly only called Alzheimer's disease; APD/AD)¹, Parkinson's disease (PD)², Creutzfeldt-Jakob disease (CJD)³, Lou-Gehrig's disease/amyotrophic lateral sclerosis (ALS)⁴, and Guam disease⁵, to mention a few.

Advanced techniques of neuroimaging, such as high-definition computerized tomography (*i.e.*, multisection spiral CT scan; CT angiography), functional and morphological magnetic resonance imaging (*i.e.*, fMRI, diffusion-MRI, tractography-MRI, etc.), positron emission tomography (PET), ultrasound-based imaging, and others, have certainly modified our general approach on how to diagnose and cure neurological and psychiatric patients. Nonetheless, although

neuroimaging techniques are capable of visualizing a person's brain when alive, they do not offer the opportunity, at the occurring moment, to directly analyze the highly intricate cellular and subcellular structures of cells, such as neurons; or to visualize, mark, and quantify specific types of intracellular lesions; or to precisely indicate their neuroanatomical or subregional localization at circuitual and sub-circuitual anatomical levels. For example, neuroimaging techniques cannot identify or localize Lewy bodies (LB) in pigmented neurons of the substantia nigra (SN), a common pathologic feature associated with PD, or neurofibrillary tangles (NFT) in the entorhinal cortex, a classical feature of AD and other brain pathologies. Neuropathological investigations combined with advanced digital microscopy are still unreplaceable for detailed clinicopathological correlations and, thus, for definitive diagnoses.

Due to the peculiar anatomo-functional properties of the human brain, and especially to its anatomical localization (that is, inside the skull, a natural protective system that does not allow the direct examination of its content), the introduction of *in vivo* neuroimaging techniques have extraordinarily helped clinicians and investigators to find initial answers to some of the mysteries of this complex tissue. However, there is no clinical or neuroimaging methodology that can replace the unique opportunity to directly analyze brain tissue during an autopsy. Only the organized collection, preservation, and categorization of human brains can allow direct and systematic investigations of neuronal and non-neuronal cells, their subcellular constituents, intracellular and extracellular pathological lesions, and any type of abnormality inside the brain to confirm, modify, or redefine clinical diagnoses and to discover new clinicopathological correlations. One of the apparent limitations concerning the assessment of the brain at autopsy has been the fact that this procedure is a cross-sectional methodology. There will always be a delay between an ongoing neuropathological process (clinically manifested or not) and the chance, if any, to define it at the neurohistological level. This is mainly due to the incapacity of the human brain to regenerate itself. It is not currently possible to obtain brain tissue *in vivo* without creating permanent damage. Consequently, it is not possible to longitudinally and neuropathologically assess the same brain/person. However, standardized brain banking procedures and an increased awareness for brain donation among the general public could greatly contribute to the resolution of brain-autopsy timing issues by consistently increasing the number of cases to collect and analyze. In this manner, more adequate numbers of postmortem brains could be obtained to define constant patterns of pathological origin and progression for each specific type of brain lesion associated with each human brain disease. This would require donation and collection of as many brains as possible from patients affected by any neuropsychiatric disorder, as well as from healthy control subjects across all ages. One possible method could be collecting as many postmortem brains as possible from general and specialized medical centers as a standard routine. The need for brain donations has been recently expressed by those who study dementia and normal aging⁶. The same necessity should be expressed by the neuropsychiatric field as whole.

For the abovementioned and for other reasons, an update of ongoing brain cutting procedures is necessary. Moreover, brain cutting procedures should be universally standardized across different neuropathology research centers around the world, also taking in account the possibility to employ current and future biotechnological techniques to better investigate and, hopefully, to definitively understand, the causes and mechanisms of brain diseases in humans.

Here, mainly for research purposes, we describe a symmetric methodology for postmortem brain cutting in humans. This procedure proposes collecting more cerebral regions than normally done and from both cerebral and cerebellar hemispheres. A symmetric bi-hemispheric brain cutting procedure will fit much better with our current knowledge of human neuroanatomy, neurochemistry, and neurophysiology. This method also allows the possibility to neuropathologically analyze the unique features of the human brain, such as hemispheric specialization and lateralization that are associated with higher cognitive and non-cognitive functions typically or exclusively present in our species. Whether there are specific pathogenetic relationships between hemispheric specialization/lateralization and specific types of brain lesions, or whether a peculiar neuropsychiatric pathogenetic event is initially, prevalently, or exclusively associated with a specific hemisphere and function is not currently known. By describing this symmetric brain cutting procedure, we aim to propose an updated method of human brain dissection that could help to better understand normal and pathological conditions in a highly specialized tissue, the brain. This method also takes into consideration those morpho-functional hemispheric aspects that exist only in humans.

PROTOCOL:

Procedures involving postmortem human tissues have been reviewed by the institutional review board and exempted under 45 CFR (Code of Federal Regulations).

Note: The protocol describes a symmetric bi-hemispheric brain cutting procedure for postmortem brain assessment finalized for neuropathological studies in humans. Detailed descriptions of the apparatuses, instruments, materials, and supplies necessary to perform human brain cutting will be excluded. Materials and supplies for brain dissections are selected at the discretion of the single investigator and are based on autopsy tools allowed or approved at each research institution. The minimal set of tools and material required for this procedure is described in the Material/Equipment Table. Specific cutting procedures and precautions for suspected transmissible brain diseases, such as human CJD, are outside the aims of this manuscript and are available from other sources⁷.

1. Symmetric Bi-Hemispheric Brain Cutting

Note: Ensure that the brain has received the necessary tissue fixation (using, for example, neutral-buffered 10% formalin) for a period of two to three weeks, depending on the periaxonal, metabolic (*i.e.*, pH), and tissue preservation (*i.e.*, temperature) conditions. However, for imaging-pathology correlation studies, a longer period of fixation (>5.4 weeks) has been suggested⁸.

1.1. Place the brain on a flat surface facing the investigator, with the frontal poles directed in the opposite direction with respect to the investigator.

1.2. Place the brain in such a way as to allowing a full and clear visualization of all cortical gyri and sulci of the entire cerebrum (Figure 1a).

1.3. First look for meningeal anomalies, macroscopic hemispheric asymmetries (possible indicators of focal, lobar, or generalized hemispheric phenomena of atrophy), macroscopic

tissutal lesions (*i.e.*, tumors or herniation), congenital malformations, vessel abnormalities, and any other possible abnormalities or unusual presentations of the cerebral surface.

Note: For detailed descriptions on how to assess a human brain, refer to commercially-available neuropathology textbooks and autopsy manuals^{9,10}.

2. Protocol Sequence

2.1 Face frontal poles away from the investigator, with the superficial aspects of the hemispheres (telencephalon) facing the investigator. Take as many digital pictures as necessary in each particular case to document possible macro-anomalies and to account for possible clinico-neuroanatomical and post-cutting considerations. Have a research assistant take digital photographs perpendicularly to the brain to capture the entire cortical surface (Figure 1a-c).

2.2 Mark pre- and post-central cortical gyri using ink or colored needles before cutting the brain (Figure 1b).

Note: This procedure facilitates a more immediate recognition of the motor and somatosensory primary cortices after cutting.

2.3 Rotate the brain by 180 degrees while keeping it facing the same direction (*i.e.*, the frontal poles facing away from the investigator). Carefully inspect the base of the brain. Pay special attention to the conditions of cerebrovascular systems (*i.e.*, basilar and vertebral arteries and the circle of Willis) and cranial nerves at their brainstem exit/entrance levels. Manage the olfactory bulbs and tracts with special care to avoid tissutal laceration, due to their extreme frailty.

2.3.1 Take as many digital pictures as necessary in each particular case to document possible macro-anomalies and to account for possible clinico-neuroanatomical and post-cutting considerations. Have a research assistant take digital photographs perpendicularly to the brain to capture the entirety of the cortical and brainstem surfaces.

2.4 Facing the base of the brain and using a scalpel, cut the brainstem transversally at the level of the upper portion of the pons (as close as possible to the base of cerebrum). Carefully inspect the SN (*i.e.*, for pallor)¹¹ and other neighboring structures¹². Take note, possibly using an audio recorder device, of any unusual appearance of the brain in comparison to a normal brain¹³.

2.5 Again rotate the brain by 180 degrees and, using a sharp knife, separate the two hemispheres by cutting the corpus callosum centrally through the medial longitudinal fissure and following a fronto-occipital direction. Inspect each side of each hemisphere for possible anomalies (*e.g.*, ventricular enlargements, malformations, tissue softening, tumors, etc.)¹³. See Figure 2a.

2.5.1 Take as many digital pictures as necessary in each particular case to document possible macro-anomalies and to account for possible clinico-neuroanatomical and post-cutting considerations. Have a research assistant take digital photographs perpendicularly to the brain to

capture the entire cortical surface. Take note of any unusual feature of the brain in comparison to a normal brain.

2.6 Place the two hemispheres flat, lying on their medial aspects, with the frontal lobes facing away from the investigator, as shown in Figure 2b. Place them in such a way that their centers touch (also in case of marked hemispheric asymmetry).

2.7 Using a sharp knife, manually cut through both cerebral hemispheres, starting at the frontal poles and moving towards the occipital poles through the entire length of the hemispheres. Obtain two series of 1-cm thick blocks of brain tissue (around 18 slabs for each hemisphere).

2.8 Place the brain slabs in an anatomically-organized (fronto-occipital direction) sequence on a separate flat surface. Use a white surface with a ruler printed on it for better contrast when photographing. Display the two series of cerebral slabs in an anatomically-symmetric way (fronto-occipital direction), making sure that their coronal surfaces are visible for direct eye inspection and digital photography (Figure 3a). Use cutting surfaces with printed millimetric grids on both sides to localize brain structures, sizes, and possible abnormalities in a more accurate manner.

2.8.1 Take as many digital pictures as necessary in each particular case to document possible macro-anomalies and to account for possible clinico-neuroanatomical and post-cutting considerations. Have a research assistant take digital photographs perpendicularly to the brain to capture the entire cortical surface. Take notes (possibly using an audio recorder device), of any unusual aspect of the brain in comparison to a normal brain.

2.9 Using a sharp scalpel, manually dissect smaller rectangular blocks of brain tissue for each established cerebral region. Follow the proposed cerebral region collection scheme described in Table 1.

2.9.1 Put each tissue block in separately-labeled histocassettes.

Note: Each block of brain tissue needs to be cut to fit, as much as possible, the standard histocassette maximal volume (30 x 20 x 4 mm).

2.9.2 Label the histocassettes using a de-identifying code for each case and using specific neuroanatomical identifiers (do not use random letters or numbers for different brains; rather, always use the same regional anatomical names or corresponding numbers, as shown in Table 1). Create de-identifying codes, for example, by generating random or semi-random numbers for each case (*i.e.*, AD160001, where AD stands for “Alzheimer’s disease study,” 16 is the year when the autopsy was performed (2016), and 0001 a progressive accession specimen number).

Note: This step is very helpful for future researchers; keep a legend, and specify the hemisphere (L = left hemisphere, R = right hemisphere). Use two different colors of histocassettes, establishing a specific color for each hemisphere.

2.9.3 Take as many digital pictures as necessary in each particular case to document possible macro-anomalies and to account for possible clinico-neuroanatomical and post-cutting considerations. Have a research assistant take digital photographs perpendicularly to the brain to capture the entire cortical surface. Take note of any unusual feature of the brain in comparison to a normal brain.

2.10 Take digital pictures (as many as necessary or desired) of the entire cut brain and the associated histocassettes.

2.11 Punch (*e.g.*, by Accu-punch) small pieces of tissue for DNA extraction and genetic analyses. Use a punch of 2-5 mm in diameter.

Note: For its high content of genomic material, the cerebellum is the preferred choice; however, any other region is fine.

2.12 Re-immerses all histocassettes containing brain tissue blocks in the same type of fixative solution (*e.g.*, 10% neutral-buffered formalin) as previously used until the next step of tissue processing.

2.13 Follow standard procedures for human formalin-fixed tissue processing¹⁴.

3. A Special Approach: Alternating Frozen and Fixed Symmetric Bi-Hemispheric Cutting

Note: The symmetric bi-hemispheric brain cutting protocol described in section 2 offers the possibility of cutting tissue slabs from unfixed, fresh brains (when available) in the same systematic and symmetric manner.

3.1 Place the entire fresh brain upside down (preferably on a semi-spherical bowl-like plastic surface) for 8-10 min in a -80 °C freezer to harden the brain tissue without provoking biochemical damage and to facilitate the manual cutting.

3.2 Using a sharp knife, cut both hemispheres in an alternate and consecutive manner, following the brain cutting protocol described in Section 2, but freeze and fix every other slab (from both hemispheres and along a fronto-occipital anatomical direction).

3.2.1 At this point, do not try to cut each cerebral region, as described in Table 1. Cut specific fresh brain regions only if required for immediate RNA or protein extraction (*i.e.*, for genomic or proteomic studies)¹⁵.

3.3 After cutting, immediately freeze, label, and number each fresh tissue. Take digital pictures of the entire slab series; pack each slab in a single plastic bag; collect the slabs in a separate, one-brain-only container; and store the container in a dedicated -80 °C freezer.

Note: The freezer should be dedicated to human brain tissue only. Only later will single frozen brain regions be cut as required for each specific experiment.

3.4 Immerse every other tissue slab chosen for fixation (10% neutral-buffered formalin or another fixative) in separate bags containing a sufficient volume of fixative (3/1 volume of fixative/tissue-block ratio). Label each bag by consecutively numbering them following a fronto-occipital sequence. Seal each bag, take digital pictures, and store them in a plastic container.

3.5 Open the fixative-containing bags after 2 weeks of tissue fixation and cut each cerebral region as described in Table 1.

4. Histostain and Immunohistochemistry

Note: The set of cerebral regions cut based on the proposed scheme (Table 1) are sufficient to satisfy most, if not all, currently-established consensus-based pathological criteria for Alzheimer's disease (AD)¹⁶, Parkinson's disease (PD)¹⁷, Dementia with Lewy bodies (DLB)¹⁸, frontotemporal dementia (FTD/MND)¹⁹, progressive supranuclear palsy (PSP)²⁰, multiple system atrophy (MSA)²¹, chronic traumatic encephalopathy (CTE)²², etc.

4.1 For each brain region and for both hemispheres, perform the following minimum set of histostains: Hematoxylin and Eosin (H&E), cresyl violet (CV; if quantitative morphometric studies are planned, for example), and silver staining (if "exploratory" analyses are needed).

4.2 For each brain region and for both hemispheres, perform the following minimum set of immunohistochemistry protocols: β -amyloid (β A), phosphorylated-Tau (pTau), phosphorylated α -synuclein (p α -syn), and phosphorylated-TDP43 (pTDP43), as described¹⁴.

Note: The total number of tissue sections in order to assess each brain following this protocol is 46 (if all cerebral regions from both hemispheres are available).

REPRESENTATIVE RESULTS:

Protocol Length

The time spent for a single symmetric bi-hemispheric fixed brain cutting procedure is estimated at 1 h (excluding the time spent setting up the dissection table, tools, and cutting surfaces; labelling; etc.). The time required for a single symmetric bi-hemispheric alternating frozen and fixed brain cutting procedure is estimated to take 2 h. It can take at least between 4-6 weeks to obtain definitive histological diagnoses for a single human brain/subject. After postmortem brain removal from the skull, an appropriate period of tissue fixation (2 to 3 weeks at least) must occur. Then, a series of protocols, including the symmetric bi-hemispheric brain cutting, tissue processing, tissue embedding, block sectioning, and staining and immunohistochemistry must be carried out. Finally, the microscopic assessment of each region per hemisphere, the use of consensus-established pathology criteria and classifications, the review of clinical records, and possibly the correlation of clinicopathology, must take place before neuropathological conclusions. The entire timing for a complete human brain neuropathological assessment should be carefully considered when planning for specific research studies. Furthermore, medical colleagues and research investigators, donors' families, and legal authorities should be informed of the total time requirement, complexity, and team time/effort to obtain a modern neuropathological assessment.

Although the proposed brain cutting protocol represents a time-consuming and challenging procedure, it actually represents a scientifically-rewarding methodology to extensively assess human brains in both healthy and pathological conditions. It is important to emphasize that, quite often during autopsy, brains received as control/normal subjects (*i.e.*, subjects assessed as clinically or neurologically normal prior to death) may actually be found to be positive for various brain pathologies after an accurate neuropathological assessment. These cases represent the so-called asymptomatic and preclinical subjects for various brain diseases, especially those characterizing age-related neurodegenerative diseases. This underlines the importance of assessing brains received as “control” in a very extensive and meticulous manner, especially for research purposes. It is becoming increasingly evident that human brains/subjects, symptomatic or not for neurological/psychiatric disorders, can accumulate multiple brain pathologies (so-called co-occurring pathologies) during aging^{23,24}. Intriguingly, these co-occurring brain lesions are biochemically identical to those found in patients with clinically manifested diseases and are localized in the same anatomical regions as well (PARS, ARTAG, CARTS)²⁵⁻²⁷. These more recent findings (possible only through autopsy investigations) have an extraordinary relevance to the study of aging effects on the human brain.

Table 2 and Figure 4 describe some preliminary semi-quantitative data obtained using a symmetric bi-hemispheric brain cutting procedure performed on a series of human brains collected in our brain bank. These preliminary data show that most brains received as “normal” or “control” from older subjects were actually not only positive for β A-neuritic plaques and tau-neurofibrillary tangles (tau-NFT), as already known²⁸⁻³², but also that the burdens of insoluble β A-neuritic plaques were higher in the left entorhinal cortex and hippocampus in comparison to the right entorhinal cortex and hippocampus of the same brain. Brains were assessed using CERAD³³ and Braak staging³⁴ systems, which respectively assess β A-neuritic plaques and tau-NFT. The observed left-hemisphere predilection for insoluble β A pathology was also present, although only as a trend, in most of the remaining regions of the left-hemisphere in comparison to the right hemisphere. The relevance of these preliminary bi-hemispheric finding is that the analyzed brains were all from a general-population autopsy cohort. All subjects were hospitalized, in fact, for non-neurological/psychiatric causes and died in different community general hospitals for non-neurological reasons. The fact that the analyzed brains were from a general-population autopsy cohort minimized selection biases possibly present when analyzing only brains from specialized neurological/dementia centers. See also the recommendation from NINDS⁶. Our findings are preliminary (4 out of 46 available “control” brains) and need confirmation at a much larger scale. However, these novel findings, if confirmed, suggest a possible phenomenon of a hemispheric predilection for the accumulation and progression of AD pathology, or β A pathology at least. Similar types of pathological hemispheric predilections could quite possibly be associated with each specific type of neuropsychiatric or neurodegenerative disorder. Furthermore, by combining symmetric bi-hemispheric brain cutting procedures with methods of precise cellular and lesion quantifications (*i.e.*, unbiased stereology), it could be possible to measure the ratio of normal to pathological conditions, as well as the ratio of neuronal loss to restorative/neuroplasticity phenomena that might be present in humans in relation to a specific hemisphere and function. Intriguingly, although the hemispheric predilection for each major type of brain pathology (β -amyloid, tau, LB, TDP43, FUS, etc.) remains to be established, functional neuroimaging³⁴, neuropsychological³⁶, and microstructural

anatomical analyses^{37,38} seem to be in line with our preliminary results. This reinforces the hypothesis of a possible hemispheric predilection for each different type of brain pathology and related disease.

Figure Legends:

Figure 1. Preliminary Brain Assessment Before Bi-Hemispheric Brain Cutting. This figure shows the various superficial aspects of a human brain after 2 weeks of fixation in 10% neutral-buffered formalin. In a clockwise sequence, the superior aspects of the brains (a, b) are followed by the observations at the base of the cerebrum, which include inspections of the cerebellum (c), brainstem and cranial nerves (d), and olfactory bulbs and tracts (e).

Figure 2. Bi-Hemispheric Human Brain Cutting. Formalin-fixed human brain placed on a flat surface for eye inspection (a). The red line indicates the medial longitudinal fissure. Placement of the two cerebral hemispheres after a central cut through the medial longitudinal fissure (b).

Figure 3. Bi-Hemispheric Brain Cutting Procedures. This figure shows some of the steps of the bi-hemispheric human brain cutting protocol. After disposing of all brain slabs (for both hemispheres) and following a fronto-occipital direction (a), each established brain region to collect (Table 1) will be cut in tissue blocks fitting standard histocassette dimensions (b-e). Cerebellum tissue blocks will need larger histocassettes (see the green [right cerebellar hemisphere] and blue [left cerebellar hemisphere]; e and f). White cassettes are for median structures, such as the medulla oblongata, spinal cord, etc. (e-g). The final histocassettes obtained after the bi-hemispheric human brain cutting protocol and containing brain tissue blocks from each neuroanatomical region listed in Table 1 are re-immersed in the same initial type of fixative solution (10% neutral-buffered formalin) (f-g).

Figure 4. Tissue Sections from Each Cerebral Hemisphere Stained for Different Antigens by Immunohistochemistry. (a) This figure shows a series of tissue sections from both hemispheres of the same human brain. Each series of bi-hemispheric sections were immunostained for β -amyloid, phosphorylated-tau, and phosphorylated α -synuclein (α -syn), whose positivity is associated with common age-related neurodegenerative diseases such as Alzheimer's and Parkinson's. The image shows a representative example of the possible total amount of sections to analyze using the proposed bi-hemispheric symmetric brain cutting protocol. LH = left hemisphere, RH = right hemisphere. (b) These images show samples of common age-related brain lesions, as observed under the microscope after using specific immunohistochemistry protocols for β -amyloid neuritic plaques, tau-neurofibrillary tangles, and α -synuclein (α -syn)-positive Lewy bodies. In the inferior right corner of each image is the type of objective used (x5, x20, and x40) to magnify and accurately identify each type of lesion.

Table 1. Bi-Hemispheric Cutting Scheme. This table shows the single anatomical area to dissect in both the left and right hemispheres of each brain. The bi-hemispheric symmetric cutting can be done on fresh and fixed brains.

Table 2. Preliminary Findings Obtained Through Bi-Hemispheric Human Brain Cutting. This table shows preliminary findings obtained through a bi-hemispheric symmetric human brain cutting procedure performed on four human brains from clinically-normal older subjects. The

data show that two cerebral regions (the entorhinal cortex and hippocampus) are constantly and early involved in the accumulation of β -amyloid neuritic plaques and tau-NFT. This type of lesion is considered to be the most probable pathogenetic process causing Alzheimer's disease (AD). f = female; m = male. The numbers between parentheses represent the age at death (in years) of each autopsied subject. A semi-quantitative colorimetric code for the quick visualization of possible hemispheric differences across types of lesions, levels of severity, and anatomical localizations among different older subjects has been used. Neg= negative (green); Sparse= 1-2 lesions (yellow); Moderate= 3-6 lesions (orange); Frequent= >6 lesions (red).

DISCUSSION:

This brain cutting method can be adapted to the specific needs of each neuropathology lab (for example, by reducing the number of cerebral regions to assess for each hemisphere) while still retaining the bi-hemispheric symmetric cutting procedure as one of its main features. This proposed protocol could be used for routine procedures (research-oriented neuropathological centers) or only when necessary (specific clinically-oriented studies). It can be selectively used only for specific types of investigations (*i.e.*, immunohistochemistry) or molecular analyses (*i.e.*, genomic or proteomic analyses). From a technical point of view, it is useful to mention that some pathological differences (especially in immunohistochemistry) could be due to possible artifactual variations in the immunohistostaining intensities. These can be minimized by utilizing automatic staining machines, which drastically reduce the possibility of artifactual staining effects and variations. It is currently possible, in fact, to technologically minimize most of confounding factors due to technical artifacts by using reliable robotic staining machines. Thus, comparable results can be obtained when assessing, for example, two cerebral hemispheres from the same subject, or multiple sets of both hemispheres from multiple subjects.

Moreover, during the last few years, the number of brain lesions recognized in human brains has been enormously increased³⁹. These new types of brain lesions created an increased risk that previous brains classified as normal or control are actually not. The improvement of immunohistochemistry techniques and new neuropathological discoveries would suggest a wise and periodic reassessment of all brains previously banked as "control," since cases of "pseudo-control" or "false-control" brains are always possible⁴⁰.

The main limitation of this method consists in the amount of time and expertise (anatomical and pathological knowledge) necessary to perform it. Moreover, studies aiming to analyze genomic and proteomic aspects of the human brain necessitate a brain bank team ready to manage, in a quick manner, all brain donation procedures, legal consent arrangements, brain removals, and immediate cutting for freezing or fixation procedures. Normally, these facilities and personnel are available only in specialized academic or research centers. In addition, while detailed cutting procedures can certainly help to better understand possible anatomical origins and spreading pathways of each brain disease, they will also always rely to the amount of detailed clinical information available for each case in order to perform accurate clinicopathological correlation studies. One of the best uses for this protocol, then, will be in the context of clinicopathological longitudinal studies, which are often the best type of investigation to collect more detailed clinical, imaging, genetic, environmental, and other types of data to correlate autopsy, microscopic, and immunohistochemistry findings with previously-collected clinical data.

Surprisingly, neuropathological investigations analyzing, classifying, or quantifying the wide spectrum of neuropathological lesions in relation to hemispheric function or localization are extremely rare⁴¹⁻⁴⁴. However, it appears that times and technologies are ready for unprecedented challenges in human neuropathology studies. The main reason to propose a symmetric bi-hemispheric brain cutting procedure was to respect peculiar functional asymmetries (anatomical or pathological) of human brains. Too often, more for blindly-accepted tradition than proven scientific reason, only one hemisphere (often stochastically selected) has been fixed for neuropathological or immunohistochemical assessment, while the other has been frozen for possible molecular or biochemical analyses. Especially when studying human brains, the casual selection of the hemisphere and consequent brain cutting contain potential risks in anatomical terms and may cause possible pathophysiological selection biases. While for practical reasons, fixing one hemisphere and freezing the opposite is reasonable in a non-research environment, it is not tenable any longer in the context of neuropathological research for neuropsychiatric disorders. Especially at the present time, when consistent amounts of *in vivo* neuroimaging and genetic information are potentially available at autopsy, a symmetric bi-hemispheric brain cutting procedure with a corresponding extensive neuropathological assessment should be performed routinely. The hemispheric specialization of the human brain has been demonstrated in many cognitive functions, such as language, dexterity, and emotions (*i.e.*, differential activation in the left and right amygdala), to name a few. This hemispheric specialization and lateralization in higher cognitive and non-cognitive functions, which typically differentiate and characterize humans from other mammalian and non-mammalian species, must be carefully considered in terms of neuropathology. That there is, in humans, a hemispheric predilection for specific pathological processes in terms of neurodegeneration, neuroinflammatory response, and neuroreparative capacities is not yet known, and it has been very rarely investigated⁴⁰⁻⁴³. Although imaging supports well-known physiologically and clinically hemispheric-specific features, it is surprising how much less is known in terms of possible neuropathological differences. By proposing a symmetric bi-hemispheric brain cutting procedure, or the more sophisticated alternating frozen and fixed symmetric bi-hemispheric brain cutting protocol, we aimed to describe a method that could help to discover peculiar aspects of the human brain during healthy and pathological conditions, as based on its unique hemispheric specialization and lateralization features.

One of the most critical steps of this protocol consists in the necessity of having the brain cutting setting, materials, and tools immediately available at any moment since it is very rare to be able to anticipate when a brain, in particular a fresh specimen, is arriving. Another important step of this protocol consists in the manual dexterity required for fresh and fixed brain cutting. Although dealing with an identical tissue, the two physical-chemical conditions (fresh and fixed tissue) make the acquisition of expertise for brain cutting an essential and critical component of the protocol. Moreover, neuroanatomical knowledge (especially for fresh brain procedures) supposes specific academic training periods. For fresh brain procedures, moreover, it is imperative and critical to move as quickly as possible and to maintain precision and the integrity of the tissue. This will preserve all biological information contained in the tissue, as well as the possibility to perform future investigations requiring fresh-frozen material (RNA, proteins, etc.).

The double frozen and fixed symmetric brain cutting method represents the best possible compromise for obtaining both fresh-frozen (useful for genetic, molecular, and microdissection

analyses) and fixed (useful for neuroanatomy, immunohistochemistry, and PCR *in situ* analyses) brain tissue sections from contiguous areas of specific cerebral regions and from both hemispheres. This methodology represents a source of comparative analyses obtained through different molecular and imaging techniques using exactly the same brain region/area (sub-anatomical region, gray matter nuclei, cell groups, dendritic/spines, etc.). A double frozen and fixed symmetric brain cutting procedure would allow one to obtain contiguous brain tissue sections from the same neuroanatomical area. This would allow for their analysis using bright-light, fluorescence, and electron microscopy (employing different procedures for each type of microscopy). RNA/DNA/protein extraction techniques could also be applied, through laser capture microdissections, for example, to the exact same region or group of neurons, cells, vessels, etc. This alternating frozen and fixed symmetric bi-hemispheric brain cutting technique, jointly with computerized systems for sample tracking and refrigeration, seems to offer enormous potential for the application of ongoing and potential future biomolecular studies.

An alternative approach to the described brain cutting procedure could be the cross-sectional cutting of each entire hemispheric surface. However, this method requires more specialized and expensive tools (*i.e.*, a larger microtome, larger slides, etc.) than the ones normally used in most neuropathology labs. Instead, our method proposes a more extensive collection of brain regions from both hemispheres, cutting those single cerebral regions using tools normally available (and affordable) in most research neuropathology labs.

The proposed brain cutting can be combined with precise methods of histological, cellular, and subcellular quantification (*i.e.*, for unbiased stereology)⁴⁵⁻⁴⁷. Quantitative neuropathological studies are of primary importance, and necessity, since quantitative data on circuits, nuclei, neurons, non-neuronal cells, vascular system abnormalities, and neuronal loss related to specific pathological lesions are mostly lacking in humans. Recently, precise quantifications of specific neuropathological lesions obtained by employing unbiased stereology protocols began to shed light on possible novel relationships between the accumulation of a specific intraneuronal lesion (*i.e.*, Lewy bodies), neuronal loss (*i.e.*, nigral loss), and clinical manifestations (*i.e.*, parkinsonian symptoms) when analyzing human brains⁴⁸. Determining the relative amounts of residual functioning neurons or reacting neuroglial cells necessary, for example, to contrast, delay, or compensate for specific neuropathological processes, could help to better understand the responsive and adaptive capacities of the adult human brain, specifically during aging. Volumetric neuronal changes, neuritis, lesion loads, fiber lengths, cortical thickness, cortical layer thickness ratios, and other possible morphometric aspects are of special interest, since their probable pathophysiological relevance at the cellular and subcellular level in the context of neuropsychiatric diseases or neurodegenerative processes has not yet been completely elucidated⁴⁹. Number, size, length of fibers or neurites, gray and white matter volumes and ratios, cortical layer analyses, etc. are all parameters precisely measurable thanks to the combination of specific statistical formulas and geometrical algorithms⁵⁰. Geometrical equations and statistical formulas have been elegantly integrated with highly-sensitive, computerized micrometric tridimensional coordination motorized systems (stereology motorized systems) for histological quantification of almost any type of bio-tissutal measurement.

The set of neuroanalyses available now to study human brain tissues was not imaginable a few years ago, and it is highly probable that there will be further advancements in the near future.

The detailed characterization of today's brains from patients, clinically asymptomatic subjects, and normal individuals will incredibly accelerate tomorrow's discoveries and the individuation of therapies for most neuropsychiatric and neurodegenerative diseases. In the context of complex illnesses, such as neuropsychiatric diseases, even the current sophisticated neuroimaging techniques cannot offer the higher levels of cellular definition and biological information that modern neuropathological techniques can. In addition, only static brain tissue images offer the opportunity to perform unbiased quantitative studies on a single group of neuronal cells or lesions or the possibility to cut single neurons (*i.e.*, laser microdissection) to extract genetic or protein materials for mass spectroscopy analyses, for example⁵¹. The symmetric bi-hemispheric brain cutting methodology could be applied, among others, to special studies, such as those investigating identical twin brains. In this unique *experimentum naturae* situation, the potential to better understand the possible relationships existing between hemispheric specialization/lateralization and cognition/pathology is impressive. The different levels of hemispheric-related pathological symmetry/asymmetry could be more easily explained in terms of a nature/nurture dilemma. For example, a symmetric bi-hemispheric brain cutting procedure could be performed on the brains of identical twins versus fraternal twins⁵²⁻⁵⁶.

A symmetric bi-hemispheric brain cutting technique should also be applied to human neurodevelopmental studies⁵⁷. Highly informative data could be collected for specific aspects of hemispheric-related neuronal and glial maturation timing, developmental neuroplasticity phenomena, and neuroreparative capacities of the central nervous system during infancy and childhood. A symmetric bi-hemispheric brain cutting procedure could greatly contribute to better define the nature/nurture dilemma for personality trait formation and behavioral changes during normal development, normal aging, and as part of initial clinical manifestations of "sporadic" neurodegenerative processes⁵⁸.

The classical clinicopathological approach performed through structured brain cutting procedures is not a historical technique, but it is still a valid and useful tool of diagnosis and research. Especially at the current time, when impressive amounts of clinical and biological information are potentially available at autopsy, the combination of clinically well-characterized cases, neuroimaging data, and genetic/molecular information with detailed modern neuropathological/quantitative analyses could represent an unprecedented "right-match" in the history of neuroscience. Combined antemortem and postmortem investigations can enormously clarify the functional and neuronal/tissutal bases of neuropsychiatric illnesses and shed light on the exact etiopathogenetic mechanisms of these disorders, also taking in account possible hemispheric factors that were not specifically considered before. The authors are aware that the proposed symmetric bi-hemispheric brain cutting technique is time- and funding-consuming, but efforts similar to those performed for the advancement of neuroimaging should be done in the neuropathology research field as well. More harmonized and structured brain banking activities will not be more expensive than building or buying MRI machines, with potential scientific outcomes that would not be less rewarding than those obtained by neuroimaging studies.

ACKNOWLEDGMENTS:

We thank the thousands of brain donors, patients, families, and neuroscientists around the world who, during the last two centuries and through their generous gifts and intellectual efforts, helped to discover how the human brain works, to understand devastating brain diseases, and to develop

treatments thereof. We particularly thank Mrs. Cecilia V. Feltis for editing and reviewing this manuscript.

DISCLOSURES:

The authors have nothing to disclose.

REFERENCES:

- 1) Braun, B., Stadlober-Degwerth, M., Hajak, G. & Klunemann, H. H. 100th anniversary of Perusini's second case: patient RM and his kindred. *Am. J. Alzheimers Dis. Other Dement.* **25**, 189-192, doi:10.1177/1533317509356689 (2010).
- 2) Jellinger, K. A. Neuropathology of sporadic Parkinson's disease: evaluation and changes of concepts. *Mov Disord* **27**, 8-30, doi:10.1002/mds.23795 (2012).
- 3) Head, M. W. Human prion diseases: molecular, cellular and population biology. *Neuropathology* **33**, 221-236, doi:10.1111/neup.12016 (2013).
- 4) Hirano, A. Neuropathology of ALS: an overview. *Neurology* **47**, S63-66 doi: 10.1212/WNL.47.4_Suppl_2.63S (1996)
- 5) Oyanagi, K. & Wada, M. Neuropathology of parkinsonism-dementia complex and amyotrophic lateral sclerosis of Guam: an update. *J. Neurol.* **246** Suppl 2, II19-27 (1999).
- 6) Montine, T. J., et al. Recommendations of the Alzheimer's disease-related dementias conference. *Neurology* **83**, 851-860, doi:10.1212/WNL.0000000000000733 (2014).
- 7) Source: <http://case.edu/med/pathology/centers/npdpssc/protocols-autopsy.html>. 2010.
- 8) Yong-Hing CJ, Obenaus A, Stryker R, Tong K, Sarty GE. Magnetic resonance imaging and mathematical modeling of progressive formalin fixation of the human brain. *Magn Reson Med.* **54**, 324-32, doi:10.1002/mrm.20578 2005.
- 9) Love, S., Perry, A., Ironside, I., & Budka, H. *Greenfield's Neuropathology*. Ninth Edition - Two Volume Set. CRC Press (2015).
- 10) Davis, R.L., Robertson, D.M. *Textbook of Neuropathology*. Third Edition. Lippincott Williams and Wilkins (1996).
- 11) Dickson, D.W. et al. Neuropathological assessment of Parkinson's disease: refining the diagnostic criteria. *Lancet Neurol.* **8**(12):1150-7. doi: 10.1016/S1474-4422(09)70238-8 (2009).
- 12) Nieuwenhuys, R., Voogd, J., & van Huijzen, C. *The Human Central Nervous System: A Synopsis and Atlas* 4th Edition. Springer Ed. doi: 10.1007/978-3-540-34686-9 (2008).
- 13) Netter, F.H. *Atlas of Human Anatomy*, Professional Edition, 6th Edition. Elsevier, (2005).
- 14) Richard W. Brown. *Histologic Preparations: Common Problems and Their Solutions*. CAP Press, Northfield, Illinois (2009).
- 15) Durrenberger, P. F., et al. Effects of antemortem and postmortem variables on human brain mRNA quality: a BrainNet Europe study. *J. Neuropathol. Exp. Neurol.* **69**, 70-81, doi:10.1097/NEN.0b013e3181c7e32f (2010).
- 16) Hyman, B. T., et al. National Institute on Aging-Alzheimer's Association guidelines for the neuropathologic assessment of Alzheimer's disease. *Alzheimers Dement.* **8**, 1-13, doi:10.1016/j.jalz.2011.10.007 (2012).
- 17) Gelb, D. J., Oliver, E. & Gilman, S. Diagnostic criteria for Parkinson disease. *Arch Neurol* **56**, 33-39, doi:10.1001/archneur.56.1.33 (1999).
- 18) McKeith, I. G., et al. Diagnosis and management of dementia with Lewy bodies: third report of the DLB Consortium. *Neurology* **65**, 1863-1872, doi:10.1212/01.wnl.0000187889.17253.b1 (2005).

- 19) Cairns, N. J., et al. Neuropathologic diagnostic and nosologic criteria for frontotemporal lobar degeneration: consensus of the Consortium for Frontotemporal Lobar Degeneration. *Acta Neuropathol.* **114**, 5-22, doi:10.1007/s00401-007-0237-2 (2007).
- 20) Litvan, I., et al. Validity and reliability of the preliminary NINDS neuropathologic criteria for progressive supranuclear palsy and related disorders. *J. Neuropathol. Exp. Neurol.* **55**, 97-105, doi: 00005072-199601000-00010 (1996).
- 21) Gilman, S., et al. Second consensus statement on the diagnosis of multiple system atrophy. *Neurology* **71**, 670-676, doi:10.1212/01.wnl.0000324625.00404.15 (2008).
- 22) McKee, A. C., et al. The first NINDS/NIBIB consensus meeting to define neuropathological criteria for the diagnosis of chronic traumatic encephalopathy. *Acta Neuropathol.* **131**, 75-86, doi:10.1007/s00401-015-1515-z (2016).
- 23) Rahimi, J., & Kovacs, G. G. Prevalence of mixed pathologies in the aging brain. *Alzheimer's Res Ther* **6**, 82, doi:10.1186/s13195-014-0082-1 (2014).
- 24) Jellinger, K. A., & Attems, J. Challenges of multimorbidity of the aging brain: a critical update. *J. Neural. Transm.* (Vienna) **122**, 505-521, doi:10.1007/s00702-014-1288-x (2015).
- 25) Crary, J. F., et al. Primary age-related tauopathy (PART): a common pathology associated with human aging. *Acta Neuropathol.* **128**, 755-766, doi:10.1007/s00401-014-1349-0 (2014).
- 26) Kovacs, G. G., et al. Aging-related tau astroglialopathy (ARTAG): harmonized evaluation strategy. *Acta Neuropathol.* **131**, 87-102, doi:10.1007/s00401-015-1509-x (2016).
- 27) Nelson P.T., et al. "New Old Pathologies": AD, PART, and Cerebral Age-Related TDP-43 With Sclerosis (CARTS). *J Neuropathol Exp Neurol.* **75**(6), 82-98. doi: 10.1093/jnen/nlw033 (2016).
- 28) Tomlinson, B. E., Blessed, G., & Roth, M. Observations on the brains of non-demented old people. *J. Neurol. Sci.* **7**, 331-356 (1968).
- 29) Katzman, R., et al. Clinical, pathological, and neurochemical changes in dementia: A subgroup with preserved mental status and numerous neocortical plaques. *Ann. Neurol.* **23**, 138-44, doi: 10.1002/ana.410230206 (1988).
- 30) Crystal, H., et al. Clinicopathologic studies in dementia: Nondemented subjects with pathologically confirmed Alzheimer's disease. *Neurology* **38**, 1682-87(1988).
- 31) Knopman, D.S., et al. Neuropathology of cognitively normal elderly. *J. Neuropathol. Exp. Neurol.* **62**: 1087 (2003).
- 32) Troncoso, J.C., et al. Neuropathology in controls and demented subjects from the Baltimore Longitudinal Study of Aging. *Neurobiol. Aging* **17**, 365-71 doi:10.1016/0197-4580(96)00028-0 (1996).
- 33) Mirra, S.S., et al. The Consortium to Establish a Registry for Alzheimer's Disease (CERAD). Part II. Standardization of the neuropathologic assessment of Alzheimer's disease. *Neurology* **41**(4):479-86 (1991).
- 34) Braak, H., & Braak, E. Neuropathological staging of Alzheimer-related changes. *Acta Neuropathol.* **82**(4):239-59 (1991).
- 35) Frings, L., et al. Asymmetries of amyloid- β burden and neuronal dysfunction are positively correlated in Alzheimer's disease. *Brain* **138**(Pt 10):3089-99, doi: lrc1.usuhs.edu/10.1093/brain/awv229 (2015).
- 36) Leroy, F., et al. New human-specific brain landmark: the depth asymmetry of superior temporal sulcus. *Proc. Natl. Acad. Sci. U S A.* **112**(4):1208-13, doi: 10.1073/pnas.1412389112 (2015).

- 37) Fink, M., et al. Lateralization of the serotonin-1A receptor distribution in language areas revealed by PET. *Neuroimage* **45**(2):598-605, doi: 10.1016/j.neuroimage.2008.11.033 (2009).
- 38) Miller, A.K.H., Alston, R.L., Mountjoy, C.Q., & Corsellis, J.A.N. Automated differential cell counting on a sector of the normal human hippocampus: the influence of age. *Neuropathol. Appl. Neurobiol.* **10**:123-42, doi: 10.1111/j.1365-2990.1984.tb00344.x (1984).
- 39) Brettschneider, J., Del Tredici, K., Lee, V.M., & Trojanowski, J.Q. Spreading of pathology in neurodegenerative diseases: a focus on human studies. *Nat. Rev. Neurosci.* **16**(2):109-20. doi: 10.1038/nrn3887 (2015).
- 40) Nolan, M., Troakes, C., King, A., Bodi, I., & Al-Sarraj, S. Control tissue in brain banking: the importance of thorough neuropathological assessment. *J. Neural. Transm. (Vienna)*. **12**, doi: 10.1007/s00702-015-1376-6 (2015).
- 41) Wilcock, G.K., & Esiri, M.M. Asymmetry of pathology in Alzheimer's disease. *J. Neurol. Neurosurg. Psychiatry*. **50**(10):1384-6 (1987).
- 42) Janota, I., & Mountjoy, C.Q. Asymmetry of pathology in Alzheimer's disease. *J Neurol Neurosurg Psychiatry* **51**(7):1011-1012 (1988).
- 43) Stefanits, H., Budka, H., & Kovacs, G.G. Asymmetry of neurodegenerative disease related pathologies: a cautionary note. *Acta Neuropathol.* **123**(3):449-452, doi: 10.1007/s00401-011-0936-6 (2012).
- 44) King, A., Bodi, I., Nolan, M., Troakes, C., & Al-Sarraj, S. Assessment of the degree of asymmetry of pathological features in neurodegenerative diseases. What is the significance for brain banks? *J Neural Transm (Vienna)*. **122**(10):1499-508, doi: 10.1007/s00702-015-1410-8 (2015).
- 45) Schmitz, C., & Hof, P. R. Design-based stereology in neuroscience. *Neuroscience* **130**, 813-831, doi:10.1016/j.neuroscience.2004.08.050 (2005).
- 46) Kristiansen, S. L., & Nyengaard, J. R. Digital stereology in neuropathology. *APMIS* **120**, 327-340, doi:10.1111/j.1600-0463.2012.02889.x (2012).
- 47) Erskine, D., & Khundakar, A. A. Stereological approaches to dementia research using human brain tissue. *J Chem Neuroanat* doi:10.1016/j.jchemneu.2016.01.004 (2016).
- 48) Lees, A. J. Unresolved issues relating to the shaking palsy on the celebration of James Parkinson's 250th birthday. *Mov. Disord.* **22** Suppl 17, S327-334, doi:10.1002/mds.21684 (2007).
- 49) Iacono, D., et al. Parkinson disease and incidental Lewy body disease: Just a question of time? *Neurology* **85**, 1670-1679, doi:10.1212/WNL.0000000000002102 (2015).
- 50) Geuna, S., & Herrera-Rincon, C. Update on stereology for light microscopy. *Cell Tissue Res.* **360**(1):5-12. doi: 10.1007/s00441-015-2143-6. Epub 2015 Mar 6 (2015).
- 51) Drummond, E.S., Nayak, S., Ueberheide, B., & Wisniewski, T. Proteomic analysis of neurons microdissected from formalin-fixed, paraffin-embedded Alzheimer's disease brain tissue. *Sci. Rep.* **5**:15456. doi: 10.1038/srep15456 (2015).
- 52) Brickell, K.L., et al. Clinicopathological concordance and discordance in three monozygotic twin pairs with familial Alzheimer's disease. *J. Neurol. Neurosurg. Psychiatry*. **78**(10):1050-5, doi: 10.1136/jnnp.2006.113803 (2007).
- 53) Xiomerisiou, G., et al. Identical twins with Leucine rich repeat kinase type 2 mutations discordant for Parkinson's disease. *Mov. Disord.* **27**(10):1323. 4, doi: 10.1002/mds.24924 (2012).
- 54) Iacono, D., et al. Neuropathologic assessment of dementia markers in identical and fraternal twins. *Brain Pathol.* **24**(4):317-33, doi: 10.1111/bpa.12127 (2014).

- 55) Iacono, D., et al. Same Ages, Same Genes: Same Brains, Same Pathologies?: Dementia Timings, Co-Occurring Brain Pathologies, ApoE Genotypes in Identical and Fraternal Age-matched Twins at Autopsy. *Alzheimer Dis. Assoc. Disord.* doi: 10.1097/WAD.0000000000000114 (2015).
- 56) Rentería, M.E. Cerebral asymmetry: a quantitative, multifactorial, and plastic brain phenotype. *Twin Res. Hum. Genet.* **15**(3):401-13, doi: 10.1017/thg.2012.13 (2012).
- 57) Bishop, D.V. Cerebral asymmetry and language development: cause, correlate, or consequence? *Science.* **340**(6138):1230531, doi: 10.1126/science.1230531 (2013).
- 58)** Mendez, M.F., et al. Observation of social behavior in frontotemporal dementia. *Am. J. Alzheimers Dis. Other Demen.* **29**(3):215-21, doi: 10.1177/1533317513517035 (2014).

Preliminary Brain Assessment Before Bi-Hemispheric Brain Cutting

Superficial aspects of the cerebrum



a



Right Pre-central Gyrus
(Primary Motor Cortex)

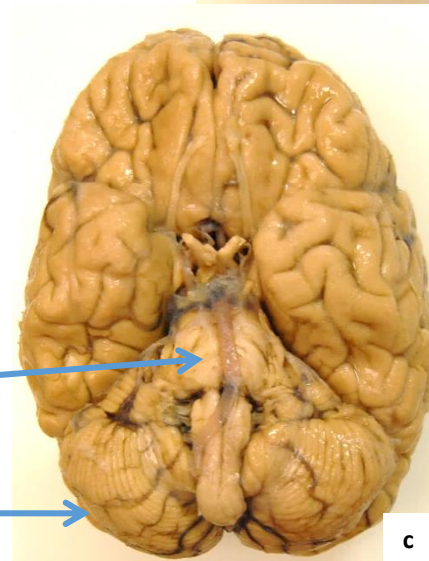
Right Post-central Gyrus
(Primary Somatosensory
Cortex)

b

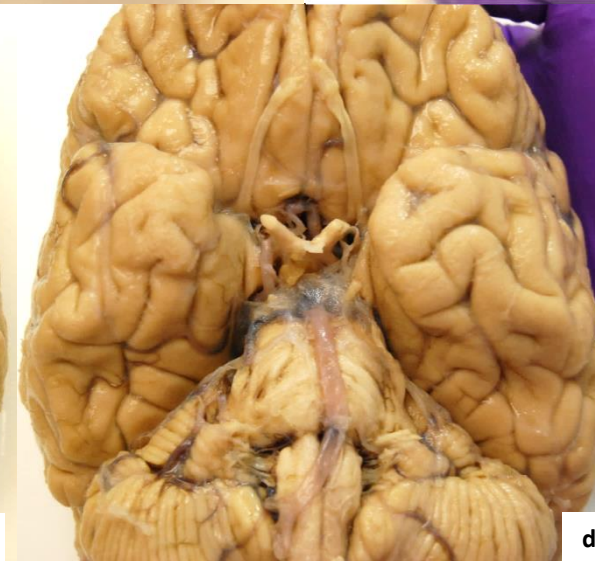
Base of the cerebrum

Brainstem (Pons)

Cerebellum



c



d



Left Olfactory Bulb and Tract

e

Figure 1

Bi-Hemispheric Brain Cutting For Human Neuropathologic Analyses

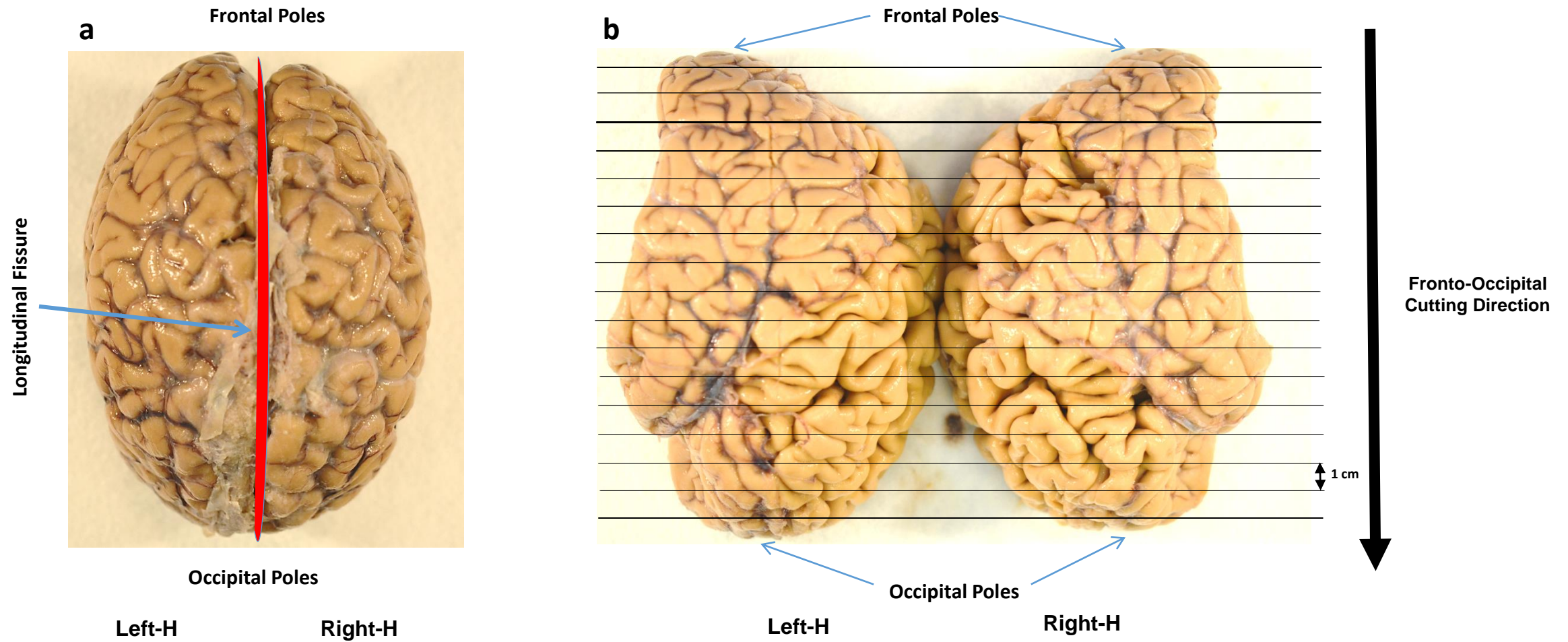


Figure 2

Bi-Hemispheric Brain Cutting Procedures

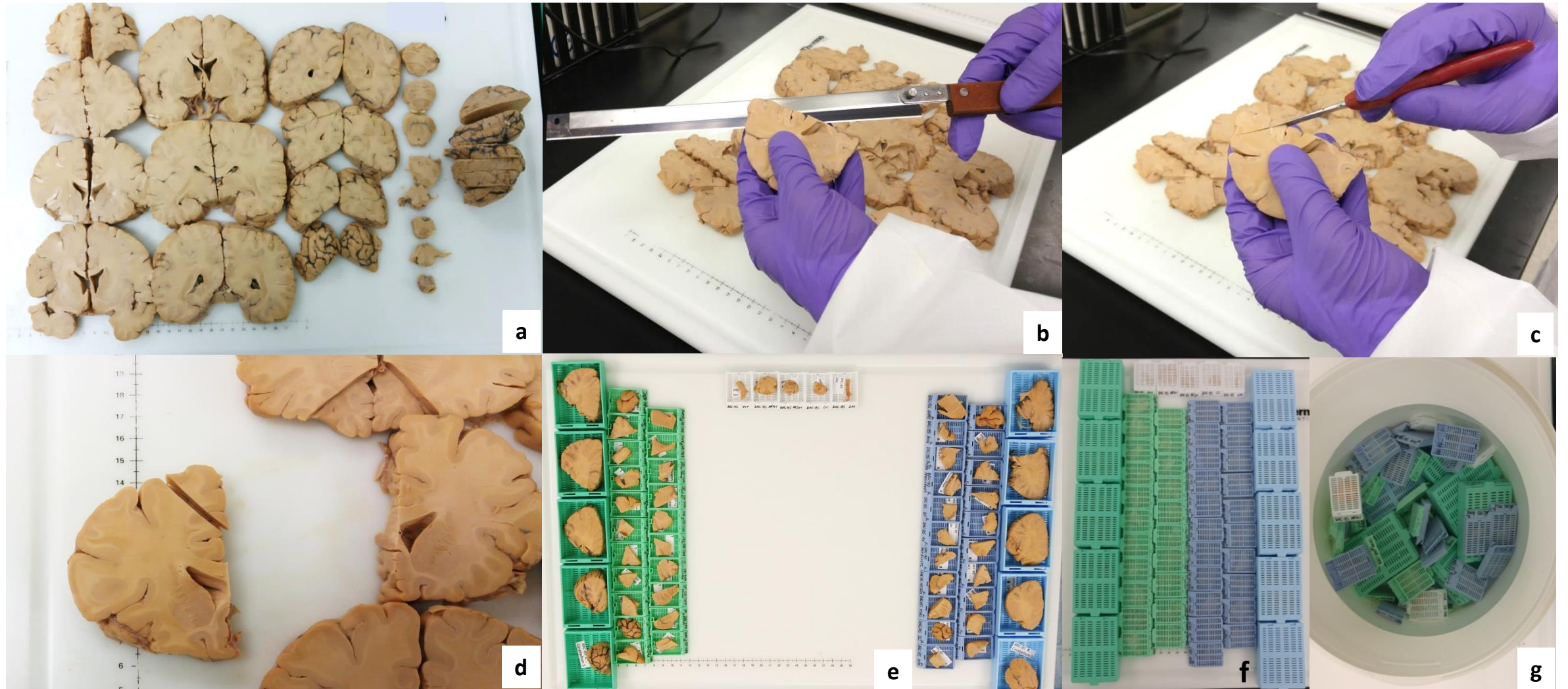


Figure 3

Tissue Sections From Each Cerebral Hemisphere Stained for Different Antigens by Immunohistochemistry

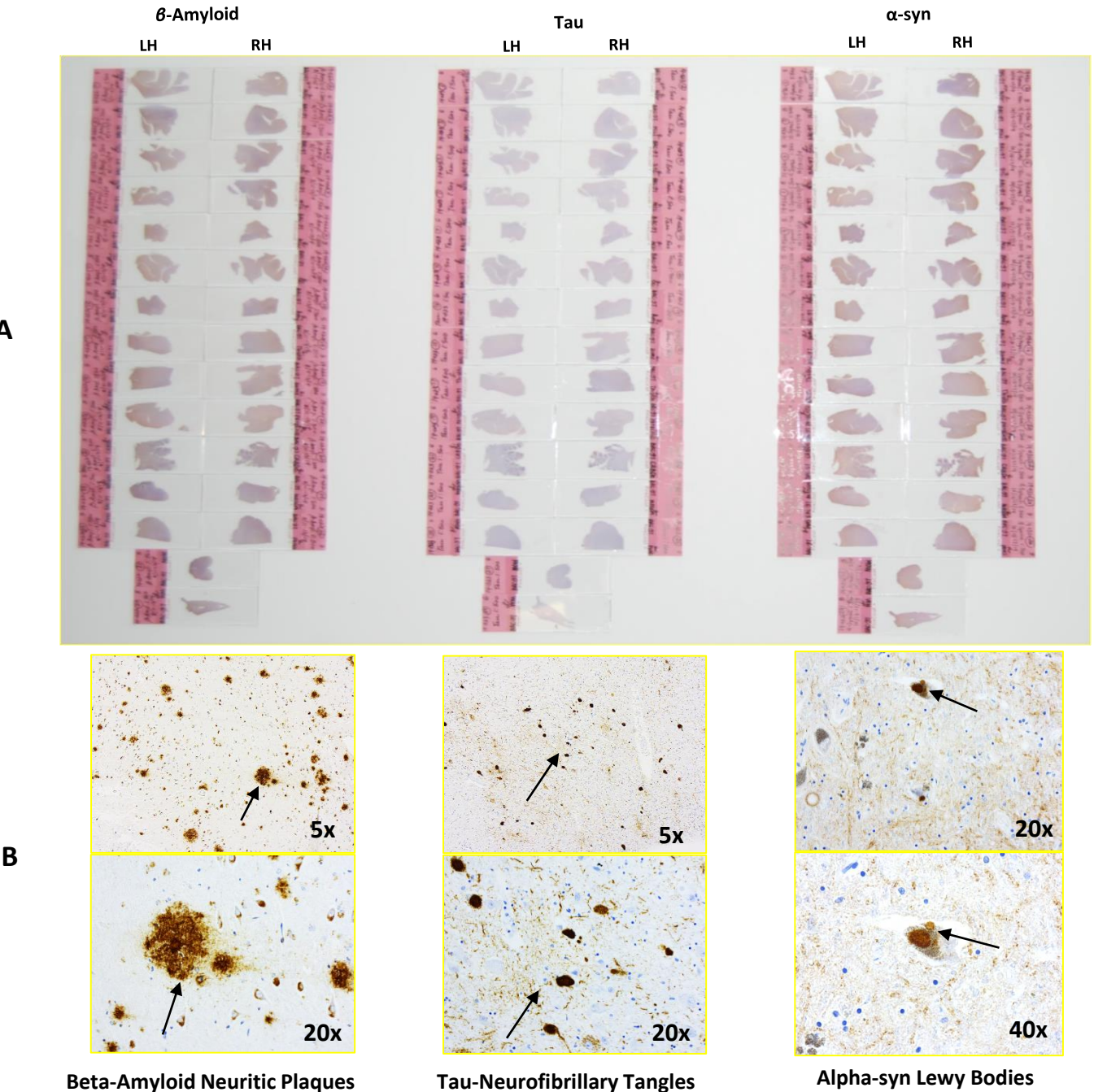


Figure 4

Neuroanatomical Region

Olfactory bulb
Polar frontal cortex
Middle frontal gyrus
Orbito-frontal gyrus
Parietal cortex lobulus inferior
Superior temporal cortex
Middle temporal cortex
Anterior cingulate cortex
Posterior cingulate cortex
Pre-central gyrus (put a pin before cutting)
Post-central gyrus (put a pin before cutting)
Occipital cortex (including Brodmann area 17 and 18)
Amygdala
Basal ganglia at level of anterior commissure with basal nucleus of Meynert
Thalamus and subthalamus
Corpora mammillary and Hypothalamus
Basal forebrain Nuclei
Anterior hippocampus
Posterior hippocampus (at corpus geniculate lateral level) including entorhinal cortex and inferior temporal cortex
Cortex cerebelli and Nucleus dentate
Mesencephalon (including Substantia Nigra)
Pons including Locus coeruleus (LC)
Medulla oblongata Medulla including DMV
Medulla spinalis
Spinal cord (upper)
Dura Madre

Label	Left Fixed	Right Fixed	Left Frozen	Right Frozen
OB				
PFC				
MFG				
OFG				
PCLI				
STC				
MTC				
ACC				
PCC				
PrCRG				
PoCRG				
OC				
AMY				
BGMV				
TH-STH				
MAM+HYPO				
BF				
AH				
PH+EC+ITC				
CRBDe				
MESSN				
PONS				
MObl				
MSpi				
SC				
DM				

Table 2. Preliminary Findings Obtained Through Bi-Hemispheric Human Brain Cutting

Beta-amyloid neuritic plaques scores

based on CERAD system
(4G8: antibody for β-amyloid detection)

Tau-neurofibrillary tangles scores

based on Braak System
(AT8: antibody for pTau detection)

Alpha-Synuclein pathology

(Lewy Bodies and Neurites)

pTDP43 intraneuronal inclusions

	Left Entorhinal Cortex and Hippocampus	Right Entorhinal Cortex and Hippocampus
Case#1 (f;76)	Moderate	Sparse
Case#2 (f;81)	Moderate	Sparse
Case#3 (f;73)	Frequent	Moderate
Case#4 (m;78)	Moderate	Sparse
Case#1 (f;76)	Frequent	Moderate
Case#2 (f;81)	Frequent	Moderate
Case#3 (f;73)	Frequent	Frequent
Case#4 (m;78)	Moderate	Moderate
Case#1 (f;76)	Neg	Neg
Case#2 (f;81)	Neg	Neg
Case#3 (f;73)	Neg	Neg
Case#4 (m;78)	Neg	Neg
Case#1 (f;76)	Neg	Neg
Case#2 (f;81)	Neg	Neg
Case#3 (f;73)	Neg	Neg
Case#4 (m;78)	Neg	Neg

Name of Document/Material**Company**

Copy of signed informed consent allowing autopsy and brain donation for research use.

Detailed clinical history of the subject which should include a detailed description of any neurologic and psychiatric symptoms and signs.

Medical or not-medical video-recordings when available (especially useful in movement disorders field). Next-of-kin's consent required.

Neuroimaging, neurophysiology, neuropsychiatric and assessment or clinicometric scales.

Genetic and family history data. Genetic reports review, if neurogenetic diseases were diagnosed.

Histology Container

ELECTRON MICROSCOPY SCIENCES

Histology Cassettes

VWR

Histology Cassettes

VWR

Knife Handles and Disposable Blades

ELECTRON MICROSCOPY SCIENCES

Long Blades

ELECTRON MICROSCOPY SCIENCES

Disposable Blade Knife Handles

ELECTRON MICROSCOPY SCIENCES

Scalpel Blades

ELECTRON MICROSCOPY SCIENCES

Accu-Punch 2 mm

ELECTRON MICROSCOPY SCIENCES

Polystyrene Containers – Sterile

ELECTRON MICROSCOPY SCIENCES

Dissecting Board

ELECTRON MICROSCOPY SCIENCES

Formalin solution, neutral buffered, 10%

Sigma-Aldrich

Hematoxylin Solution, Gill No. 2

Sigma-Aldrich

Eosin Y solution, aqueous

Sigma-Aldrich

anti-beta-amyloid

Covance, Princeton, NJ

anti-tau

Thermo Fisher Scientific

anti-alpha-synuclein

Abcam

anti-phospho-TDP43

Cosmo Bio Co.

Digital Camera

Any

Head Impulse Sealing machine

Grainger

Catalog Number	Dilution
----------------	----------

64233-24	
----------	--

18000-142 (orange)	
--------------------	--

18000-132 (navy)	
------------------	--

62560-04	
----------	--

62561-20	
----------	--

72040-08	
----------	--

72049-22	
----------	--

69038-02	
----------	--

64240-12	
----------	--

63307-30	
----------	--

HT501128 SIGMA	
----------------	--

GHS280 SIGMA	
--------------	--

HT1102128 SIGMA	
-----------------	--

SIG-39220	1 500
-----------	-------

MN1020	1 500
--------	-------

ab27766	1 500
---------	-------

TIP-PTD-P02	1 2000
-------------	--------

5ZZ35	
-------	--



1 Alewife Center #200
Cambridge, MA 02140
tel. 617.945.9051
www.jove.com

ARTICLE AND VIDEO LICENSE AGREEMENT

Title of Article:

SYMMETRIC BI-HEMISPHERIC POSTMORTEM BRAIN CUTTING

Author(s):

DIEGO IACONO, MARIA BEHACI-ERCK, HUI PENG, SP BOUFFARD

Item 1 (check one box): The Author elects to have the Materials be made available (as described at <http://www.jove.com/publish>) via: ☒ Standard Access ☐ Open Access

Item 2 (check one box):

- ☒ The Author is NOT a United States government employee.
- ☐ The Author is a United States government employee and the Materials were prepared in the course of his or her duties as a United States government employee.
- ☐ The Author is a United States government employee but the Materials were NOT prepared in the course of his or her duties as a United States government employee.

ARTICLE AND VIDEO LICENSE AGREEMENT

1. **Defined Terms.** As used in this Article and Video License Agreement, the following terms shall have the following meanings: "Agreement" means this Article and Video License Agreement; "Article" means the article specified on the last page of this Agreement, including any associated materials such as texts, figures, tables, artwork, abstracts, or summaries contained therein; "Author" means the author who is a signatory to this Agreement; "Collective Work" means a work, such as a periodical issue, anthology or encyclopedia, in which the Materials in their entirety in unmodified form, along with a number of other contributions, constituting separate and independent works in themselves, are assembled into a collective whole; "CRC License" means the Creative Commons Attribution-Non Commercial-No Derivs 3.0 Unported Agreement, the terms and conditions of which can be found at: <http://creativecommons.org/licenses/by-nc-nd/3.0/legalcode>; "Derivative Work" means a work based upon the Materials or upon the Materials and other pre-existing works, such as a translation, musical arrangement, dramatization, fictionalization, motion picture version, sound recording, art reproduction, abridgment, condensation, or any other form in which the Materials may be recast, transformed, or adapted; "Institution" means the institution, listed on the last page of this Agreement, by which the Author was employed at the time of the creation of the Materials; "JoVE" means MyJoVE Corporation, a Massachusetts corporation and the publisher of *The Journal of Visualized Experiments*; "Materials" means the Article and / or the Video; "Parties" means the Author and JoVE; "Video" means any video(s) made by the Author, alone or in conjunction with any other parties, or by JoVE or its affiliates or agents, individually or in collaboration with the Author or any other parties, incorporating all or any portion of the Article, and in which the Author may or may not appear.

2. **Background.** The Author, who is the author of the Article, in order to ensure the dissemination and protection of the Article, desires to have the JoVE publish the Article and create and transmit videos based on the Article. In furtherance of such goals, the Parties desire to memorialize in this Agreement the respective rights of each Party in and to the Article and the Video.

3. **Grant of Rights in Article.** In consideration of JoVE agreeing to publish the Article, the Author hereby grants to JoVE, subject to Sections 4 and 7 below, the exclusive, royalty-free, perpetual (for the full term of copyright in the Article, including any extensions thereto) license (a) to publish, reproduce, distribute, display and store the Article in all forms, formats and media whether now known or hereafter developed (including without limitation in print, digital and electronic form) throughout the world, (b) to translate the Article into other languages, create adaptations, summaries or extracts of the Article or other Derivative Works (including, without limitation, the Video) or Collective Works based on all or any portion of the Article and exercise all of the rights set forth in (a) above in such translations, adaptations, summaries, extracts, Derivative Works or Collective Works and (c) to license others to do any or all of the above. The foregoing rights may be exercised in all media and formats, whether now known or hereafter devised, and include the right to make such modifications as are technically necessary to exercise the rights in other media and formats. If the "Open Access" box has been checked in Item 1 above, JoVE and the Author hereby grant to the public all such rights in the Article as provided in, but subject to all limitations and requirements set forth in, the CRC License.

ARTICLE AND VIDEO LICENSE AGREEMENT

4. Retention of Rights in Article. Notwithstanding the exclusive license granted to JoVE in Section 3 above, the Author shall, with respect to the Article, retain the non-exclusive right to use all or part of the Article for the non-commercial purpose of giving lectures, presentations or teaching classes, and to post a copy of the Article on the Institution's website or the Author's personal website, in each case provided that a link to the Article on the JoVE website is provided and notice of JoVE's copyright in the Article is included. All non-copyright intellectual property rights in and to the Article, such as patent rights, shall remain with the Author.

5. Grant of Rights in Video – Standard Access. This Section 5 applies if the "Standard Access" box has been checked in Item 1 above or if no box has been checked in Item 1 above. In consideration of JoVE agreeing to produce, display or otherwise assist with the Video, the Author hereby acknowledges and agrees that, Subject to Section 7 below, JoVE is and shall be the sole and exclusive owner of all rights of any nature, including, without limitation, all copyrights, in and to the Video. To the extent that, by law, the Author is deemed, now or at any time in the future, to have any rights of any nature in or to the Video, the Author hereby disclaims all such rights and transfers all such rights to JoVE.

6. Grant of Rights in Video – Open Access. This Section 6 applies only if the "Open Access" box has been checked in Item 1 above. In consideration of JoVE agreeing to produce, display or otherwise assist with the Video, the Author hereby grants to JoVE, subject to Section 7 below, the exclusive, royalty-free, perpetual (for the full term of copyright in the Article, including any extensions thereto) license (a) to publish, reproduce, distribute, display and store the Video in all forms, formats and media whether now known or hereafter developed (including without limitation in print, digital and electronic form) throughout the world, (b) to translate the Video into other languages, create adaptations, summaries or extracts of the Video or other Derivative Works or Collective Works based on all or any portion of the Video and exercise all of the rights set forth in (a) above in such translations, adaptations, summaries, extracts, Derivative Works or Collective Works and (c) to license others to do any or all of the above. The foregoing rights may be exercised in all media and formats, whether now known or hereafter devised, and include the right to make such modifications as are technically necessary to exercise the rights in other media and formats. For any Video to which this Section 6 is applicable, JoVE and the Author hereby grant to the public all such rights in the Video as provided in, but subject to all limitations and requirements set forth in, the CRC License.

7. Government Employees. If the Author is a United States government employee and the Article was prepared in the course of his or her duties as a United States government employee, as indicated in Item 2 above, and any of the licenses or grants granted by the Author hereunder exceed the scope of the 17 U.S.C. 403, then the rights granted hereunder shall be limited to the maximum rights permitted under such

statute. In such case, all provisions contained herein that are not in conflict with such statute shall remain in full force and effect, and all provisions contained herein that do so conflict shall be deemed to be amended so as to provide to JoVE the maximum rights permissible within such statute.

8. Likeness, Privacy, Personality. The Author hereby grants JoVE the right to use the Author's name, voice, likeness, picture, photograph, image, biography and performance in any way, commercial or otherwise, in connection with the Materials and the sale, promotion and distribution thereof. The Author hereby waives any and all rights he or she may have, relating to his or her appearance in the Video or otherwise relating to the Materials, under all applicable privacy, likeness, personality or similar laws.

9. Author Warranties. The Author represents and warrants that the Article is original, that it has not been published, that the copyright interest is owned by the Author (or, if more than one author is listed at the beginning of this Agreement, by such authors collectively) and has not been assigned, licensed, or otherwise transferred to any other party. The Author represents and warrants that the author(s) listed at the top of this Agreement are the only authors of the Materials. If more than one author is listed at the top of this Agreement and if any such author has not entered into a separate Article and Video License Agreement with JoVE relating to the Materials, the Author represents and warrants that the Author has been authorized by each of the other such authors to execute this Agreement on his or her behalf and to bind him or her with respect to the terms of this Agreement as if each of them had been a party hereto as an Author. The Author warrants that the use, reproduction, distribution, public or private performance or display, and/or modification of all or any portion of the Materials does not and will not violate, infringe and/or misappropriate the patent, trademark, intellectual property or other rights of any third party. The Author represents and warrants that it has and will continue to comply with all government, institutional and other regulations, including, without limitation all institutional, laboratory, hospital, ethical, human and animal treatment, privacy, and all other rules, regulations, laws, procedures or guidelines, applicable to the Materials, and that all research involving human and animal subjects has been approved by the Author's relevant institutional review board.

10. JoVE Discretion. If the Author requests the assistance of JoVE in producing the Video in the Author's facility, the Author shall ensure that the presence of JoVE employees, agents or independent contractors is in accordance with the relevant regulations of the Author's institution. If more than one author is listed at the beginning of this Agreement, JoVE may, in its sole discretion, elect not take any action with respect to the Article until such time as it has received complete, executed Article and Video License Agreements from each such author. JoVE reserves the right, in its absolute and sole discretion and without giving any reason therefore, to accept or decline any work submitted to JoVE. JoVE and its employees, agents and independent contractors shall have

ARTICLE AND VIDEO LICENSE AGREEMENT

full, unfettered access to the facilities of the Author or of the Author's institution as necessary to make the Video, whether actually published or not. JoVE has sole discretion as to the method of making and publishing the Materials, including, without limitation, to all decisions regarding editing, lighting, filming, timing of publication, if any, length, quality, content and the like.

11. **Indemnification.** The Author agrees to indemnify JoVE and/or its successors and assigns from and against any and all claims, costs, and expenses, including attorney's fees, arising out of any breach of any warranty or other representations contained herein. The Author further agrees to indemnify and hold harmless JoVE from and against any and all claims, costs, and expenses, including attorney's fees, resulting from the breach by the Author of any representation or warranty contained herein or from allegations or instances of violation of intellectual property rights, damage to the Author's or the Author's institution's facilities, fraud, libel, defamation, research, equipment, experiments, property damage, personal injury, violations of institutional, laboratory, hospital, ethical, human and animal treatment, privacy or other rules, regulations, laws, procedures or guidelines, liabilities and other losses or damages related in any way to the submission of work to JoVE, making of videos by JoVE, or publication in JoVE or elsewhere by JoVE. The Author shall be responsible for, and shall hold JoVE harmless from, damages caused by lack of sterilization, lack of cleanliness or by contamination due to the making of a video by JoVE its employees, agents or independent contractors. All sterilization, cleanliness or decontamination procedures shall be solely the responsibility of the Author and shall be undertaken at the Author's

expense. All indemnifications provided herein shall include JoVE's attorney's fees and costs related to said losses or damages. Such indemnification and holding harmless shall include such losses or damages incurred by, or in connection with, acts or omissions of JoVE, its employees, agents or independent contractors.

12. **Fees.** To cover the cost incurred for publication, JoVE must receive payment before production and publication the Materials. Payment is due in 21 days of invoice. Should the Materials not be published due to an editorial or production decision, these funds will be returned to the Author. Withdrawal by the Author of any submitted Materials after final peer review approval will result in a US\$1,200 fee to cover pre-production expenses incurred by JoVE. If payment is not received by the completion of filming, production and publication of the Materials will be suspended until payment is received.

13. **Transfer, Governing Law.** This Agreement may be assigned by JoVE and shall inure to the benefits of any of JoVE's successors and assignees. This Agreement shall be governed and construed by the internal laws of the Commonwealth of Massachusetts without giving effect to any conflict of law provision thereunder. This Agreement may be executed in counterparts, each of which shall be deemed an original, but all of which together shall be deemed to be one and the same agreement. A signed copy of this Agreement delivered by facsimile, e-mail or other means of electronic transmission shall be deemed to have the same legal effect as delivery of an original signed copy of this Agreement.

A signed copy of this document must be sent with all new submissions. Only one Agreement required per submission.

CORRESPONDING AUTHOR:

Name:

DIEGO LACONO

Department:

NEUROPATHOLOGY

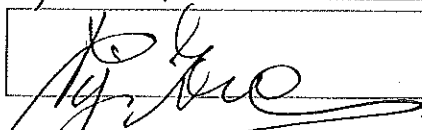
Institution:

BIOMEDICAL RESEARCH INSTITUTE OF MS

Article Title:

SYMMETRIC BIHEMISPHERIC POSTOPERATIVE BRAIN CUTTING

Signature:



Date:

02/12/2016

Please submit a signed and dated copy of this license by one of the following three methods:

- 1) Upload a scanned copy of the document as a pdf on the JoVE submission site;
- 2) Fax the document to +1.866.381.2236;
- 3) Mail the document to JoVE / Attn: JoVE Editorial / 1 Alewife Center #200 / Cambridge, MA 02139

For questions, please email submissions@jove.com or call +1.617.945.9051

July 5, 2016

Dear Editor,

Thank you for your revision and suggestions. We tried to satisfy all comments received from you and reviewers.

Changes have been made and are tracked in the tracked-changes version of the manuscript.

Below in ***bold italics***, are our answers to the editor and reviewers.

To the editor: most of the reviewers' comments were fine. However, it looked like that one of the reviewer (#2) did not have a specific medical or neuropathology background since the very general questions. Even though, we tried to comment on his/her observations/questions as much as we could.

Thank you.

Bets regards,

Diego Iacono

Dear Dr. Iacono,

Your manuscript JoVE54602R2 "Symmetric Bi-Hemispheric Postmortem Brain Cutting to Study Healthy and Pathological Brain Conditions in Humans." has been peer-reviewed and the following comments need to be addressed. Please keep JoVE's formatting requirements and the editorial comments from previous revisions in mind as you revise the manuscript to address peer review comments. Please maintain these overall manuscript changes, e.g., if formatting or other changes were made, commercial language was removed, etc.

Please track the changes in your word processor (e.g., Microsoft Word) or change the text color to identify all of the manuscript edits. When you have revised your submission, please also upload a separate document listing all of changes that address each of the editorial and peer review comments individually with the revised manuscript. Please provide either (1) a description of how the comment was addressed within the manuscript or (2) a rebuttal describing why the comment was not addressed if you feel it was incorrect or out of the scope of this work for publication in JoVE.

Your revision is due by Jul 07, 2016. Please note that due to the high volume of JoVE submissions, failure to meet this deadline will result in publication delays. To submit a revision, go to the JoVE Submission Site and log in as an author. You will find your submission under the heading 'Submission Needing Revision'.

Sincerely,

Mala Mani,
Science Editor

JoVE

1 Alewife Center, Suite 200, Cambridge, MA 02140

tel: 6174019173

Editorial comments:

- Your manuscript has been modified by your editor, please maintain the current formatting throughout the manuscript. Please use the updated manuscript located in your Editorial Manager account (under "File Inventory") for all subsequent revisions. Updated manuscript is also attached.
- Please take this opportunity to thoroughly proofread your manuscript to ensure that there are no spelling or grammatical errors. Your JoVE editor will not copy-edit your manuscript and any errors in your submitted revision may be present in the published version.
- JoVE reference format requires that DOIs are included, when available, for all references listed in the article. This is helpful for readers to locate the included references and obtain more information. Please note that often DOIs are not listed with PubMed abstracts and as such, may not be properly included when citing directly from PubMed. In these cases, please manually include DOIs in reference information. ***We have added DOIs when available.***
- **Please disregard the comment below if all of your figures are original.** If you are re-using figures from a previous publication, please obtain explicit permission to re-use the figure from the previous publisher (this can be in the form of a letter from an editor or a link to the editorial policies that allows you to re-publish the figure). Please upload the text of the re-print permission (may be copied and pasted from an email/website) as a Word document to the Editorial Manager site in the "Supplemental files (as requested by JoVE)" section. Please also cite the figure appropriately in the figure legend, i.e. "This figure has been modified from [citation]. ***All figures in this manuscript are original.***
- Figure 3a: Please remove "Thermo Scientific". ***Done***
- The Protocol length exceeds 3 pg. Please highlight 2.75 pg of material or less for filming. We suggest omitting sections 1 & 4 from filming. ***We underlined sections 1&2 for filming since section 3 requires a fresh brain from the autopsy room, which availability cannot be granted for the day of filming.***

•The manuscript must be copy edited for numerous grammatical errors. Such editing is required prior to acceptance and should be performed by a native English speaker. The discussion is particularly difficult to understand. Some examples are indicated below.

-Long abstract – Please clarify “capitalize current and possibly future biomolecular/neuroimaging techniques”. **We replaced the word “capitalize” with “use”.**

-Please do not use “excellent” or similar adjectives to describe the protocol. Please use only objective phrasing. **We eliminated the word “excellent”.**

-Line 455 – “This method can be modified or adapted to the specific needs of each neuropath lab keeping though the hemispheric analysis as one of its features” – Please clarify. **We rephrased this statement with “This method can be adapted to the specific needs of each neuropath lab (for example by reducing the number of cerebral regions to assess) but keeping the bi-hemispheric cutting procedure as one of its main features.**

-Line 458 – “only to specific type of investigation or molecular analyses”. **We clarified this statement with specific examples “...specific types of investigation (i.e. immunohistochemistry) or molecular analyses (i.e. genomic or proteomic analyses)”.**

-Line 462 – “devises”. **We replaced “devices” with “machines”.**

-Line 467 – “situation determined”. **We rephrased with “These new types of brain lesions created an increased risk that previous brains classified as normal or control, are actually not”.**

-Line 468 – “constant amelioration”. **We rephrased with “The constant improvement of immunohistochemistry techniques and new neuropathologic discoveries”.**

-Line 474 – “studies finalized to genomic/proteomic analyses supposed”. **We rephrased this part with “...Moreover, studies aiming to analyze genomic and proteomic aspects of human brain necessitate a brain-bank team ready to manage, in a quick manner, all brain donations procedures, legal consent arrangements, brain removals, and immediate cutting for freezing procedures.**

-Line 479 – “help to better understanding”. **We rephrased with “help the better understand the possible...”**

-Line 481 – “One of the best fits for this protocol in the context of clinico-pathologic longitudinal studies, which are often the best type of investigations to collect more exhaustively clinical, imaging, genetic and environmental data to better correlate autopsy findings and microscopic/immunohistochemistry results.” – This is not a complete sentence. **We rephrased with” One of the best uses for this protocol will be in the context of clinico-pathologic longitudinal studies, which are often the best type of investigations to collect prospective clinical, imaging, genetic, environmental, and other type of data to better correlate autopsy findings and microscopic/immunohistochemistry results with previously collected clinical information”.**

-Line 482 – “exhaustively clinical” **We rephrased this part (see changes).**

-Line 497 – “comprehensible” is not the right word. **We replaced this word with “reasonable”.**

-Line 499 – “genetic useful information”. **We eliminated the word “useful”.**

-Line 503 – “emotional feelings”. **We used just the word “emotions”.**

-Line 506 – “not-mammalian species”; “If there is a hemispheric predilection for specific pathologic processes in terms of neurodegeneration, neuroinflammation, and neuroreparative capacities in humans is not known”. **We rephrased with “...and non-mammalian species. If there is, in humans, a hemispheric predilection for specific pathologic processes in terms of neurodegeneration, neuroinflammation responses, and neuroreparative capacities is not known and it has been very rarely investigated.”**

-Line 550 – “begun”. **Corrected.**

-Line 568 – “The set of neuroanalyses currently performable on human brain tissues were”. **We rephrased with: “The set of neuroanalyses available now to analyze human brain tissues were not imaginable a few years ago and it is highly probably that there will be further advancements in the near future”.**

-Line 572 – “In the contest of complex illnesses”. **“,...such as the neuropsychiatric diseases..”**

-Line 607 – “comparable efforts similarly”. **We eliminated “comparable” and use the word “similar”.**

-Please correct the grammar in the Acknowledgements section. **Done.**

•Additional detail is required:

-2.3 – How are olfactory bulbs and tracts preserved? **“Preserve olfactory bulbs and tracts with special care to avoid tissutal laceration due to their extreme frailty”.**

-2.4 – What is used to cut here? **We add: ...and using a sharp knife”.**

-2.9.2 – Please clarify “de-identifying codes; neuroanatomical names”. It is not clear how things are labeled here, so please use complete sentences and correct punctuation. **We added this: “De-identifying codes could be created by generating random or semi-random numbers for each case (i.e. AD160001, where AD stays for Alzheimer’s Disease study, 16 is the year of autopsy (2016), 0001 a progressive accession specimen number).”**

•Results:

-Please provide a figure at higher magnification showing the positive staining. Currently it is difficult to see what is referred to in the results section. **We have added pictures obtained at different level of magnification for each type of brain lesions described in the figure.**

-Please explicitly discuss table 2 in the results section. **Done.**

-The color code does not contribute to the clarity of the table unless it is appropriately used. It should be removed if nothing is color-coded. **We added the color-code in Table 2 and in the legend.**

•Discussion: Please discuss what alternative methods could be performed and the significance of this protocol in relation to them. ***We added this (line 611, discussion): "An alternative approach to the described brain cutting procedure could be the cross-sectional cutting of each entire hemispheric surface. This method though requires specialized and more expensive tools (i.e. larger microtome, larger slides, etc.) than the ones normally used. Our method, instead, proposes a more extensive collection of brain regions from both hemispheres by cutting those single cerebral regions using tools normally available (and affordable) in most of research neuropathology labs."***

Reviewers' comments:

Reviewer #1:

Manuscript Summary:

The present manuscript describes a protocol for symmetric bi-hemispheric brain cutting. The methods are sound and the protocol can be well replicated when following the proposed steps. Standardization of this procedure is of tremendous importance given that autopsy is increasingly utilized and co-registered with e.g. neuroimaging. The discussion covers those aspects sufficiently.

Major Concerns:

N/A

Minor Concerns:

There is little to criticize, thus I have only minor recommendations:

-Please comment how the brain is fixed because the steps describe heavily depend that the brain's hemispheres are formed identically. Normally the brain is deformed during the process of fixation just because of gravity. Are there any special preparations, which can be done to prevent this? ***The best way to prevent tissue distortions is to immediately immerse the entire brain in a sufficient amount of fixative (i.e. 1 gallon of formalin 10%) in a cylindrical container (usually, at the beginning, the brain tends to float in the container so avoiding tissue deformations).***

-Line 174: Is the brain entirely fixed after 2-3 weeks? If then please give a reference e.g.: Yong-Hing CJ, Obenaus A, Stryker R, Tong K, Sarty GE. Magnetic resonance imaging and mathematical modeling of progressive formalin fixation of the human brain. Magn Reson Med. 2005;54: 324-32. doi:10.1002/mrm.20578. ***Complete brain tissue fixation (by formalin or other fixatives) depends on different factors (type and concentration of fixative, periaxonal ischemic-hypoxic conditions, presence of brain edema before and after death, tissutal pH, temperature of the corpse until autopsy, autolysis, etc.). 2-3 weeks has been the minimal time normally required to obtain a sufficient brain fixation in a non-edematous brain to perform standard neuropath evaluations, especially in clinical centers where there is the necessity of reporting autopsy findings as soon as possible (i.e. for legal reasons). A period of 2-3 weeks has been demonstrated to be sufficient enough to obtain the fixation of intact human***

brains and it is normally good enough for most of the histological staining and immunohistochemistry protocols. Only recently, with the advancement of imaging-pathology correlations the fixation issue (in a research setting) has become more important. We add the ref as suggested.

-Line 250: Additionally to the photographs, I would recommend overlaying a transparent empty graph sheet with e.g. 1 mm spacing. This will enable locating structures, sizes and abnormalities more accurately. We added this: ***"We suggest using a cutting surfaces (see Figure 3) with printed millimetric grid on their sides to localize brain structures, size and possible abnormalities in a more accurate manner"***.

-Line293: Please describe what is meant by "standard procedure". ***We added a ref (ref14) that describes all proper steps needed to perform a correct tissue processing, which is a standardized process performed by automatic systems.***

Additional Comments to Authors:

N/A

Reviewer #2:

Manuscript Summary:

This is a very good scientific study for definitive diagnoses for complex neuropsychiatric phenomena to know the hemispheric differences in AD, PD or ALS and other neurodegenerative diseases in comparison to brain imaging. It has confirmatory and immense value since it relies specifically upon the direct physical assessment of brain tissues. However, there are concerns that should be improved.

Major Concerns:

a) Most of the time collection of as many as brain sample, storage, autopsy timings, and analyzing brain sample may differ so how do you confirm and correlate the neuropathological changes in any particular disease? ***This is very general question that goes much behind the aims of our manuscript. We wish to emphasize the importance and necessity to study human neuroanatomy. Only through the careful and patient neuroanatomical studying it is possible to recognize abnormalities and correlate them with clinical information. It is not possible in this manuscript to describe how the loss-of-function concept helped to define anatomy and function of specific cerebral regions in humans (decades of clinico-pathologic studies...), or how using inferential processes it is possible to correlate neuropathologic changes that are typically present in certain clinical manifestations and not in others (this is part of a of the medical and neuropathology specialty training).***

b) How do you know the particular neurochemical and the morpho-functional changes after autopsy as most of the neurochemicals their have half life and may be degraded by the time of testing? ***This is the reason why it's important to freeze the brain as soon as possible. Quick freezing represents the best method possible to preserve the "chemistry of the brain as it is" at the moment of death. Of course, increasing the number of brain donations (by age, sex, conditions, etc.) would allow a better understanding of morpho-functional changes across the life-span and conditions. Moreover, there are other disciplines such as biochemistry, molecular biology, pharmacology, genetics, radiology, etc. (and***

animal models) that tremendously help to understand the “biochemistry” of the brain. Here we just describe a brain cutting method that could help to better understand pathologic process present in human brain at the moment of death.

Minor Concerns:

c) In 2.3 Section, you have mentioned marking pre and post central gyri with color pencil before sectioning but this may erase the spot at the time of sectioning so how do you confirm the spot in that case? ***We never mentioned pencils in this manuscript. We mentioned needles (as showed in Fig.1).***

d) In 2.10 Section, you have mentioned numbering of the different parts—but again there may be chances of mixing with right and left hemisphere parts. So, how do you distinguished. ***Usually you put the left hemisphere on your left and the right hemisphere of your right (see pics in Fig.1) and you need to be extremely careful during the brain cutting. Each number corresponds always to the same cerebral region for each and every brain cutting. We also suggested using histocassettes with different colors when collecting regions from different hemispheres (in Fig. 3 for example, green cassettes are for the left hemisphere, blue cassettes for the right hemisphere).***

e) How did you confirm congenital malformations, vessel abnormalities, and any other possible abnormality in the cerebral surfaces before cutting? ***There are malformations visible by naked eye: meningeal cysts, lissencephaly, cortical (external) artero-venous malformations, tumors, etc... In the manuscript we suggested some textbooks where to acquire all this knowledge (which represents a medical specialty). We cannot summarize in this manuscript the entire field of neuropathology. Our manuscript describes a brain cutting method only.***

f) How many normal and pathological brain samples did you cut bi-hemispherical in this study? What was the wrong with other brain cutting techniques? ***As described in the manuscript we analyzed 4 out of 46 control brains (from normal subjects) following our bi-hemispheric cutting so far. The study aims to analyze the pathology before its clinical manifestations (there are no pathologic brains involved in this study; these are brain from neurologically normal people). Previous brain cutting techniques have been often limited by the fact that the neuropath analyses were performed on one hemisphere only, assuming that the pathologic is symmetric, but this is not always the case.***

g) Representative results section—what is Braak staging systems? What is TDP43 and mention the significance of measuring it. ***Braak staging (ref33) is a method normally used in neuropathology to stage the level of severity of neurofibrillary tangles (tau pathology), a pathology present in Alzheimer's disease. TDP43 is another type of pathology (present in frontotemporal dementia cases, for example; ref14). The general significance of measuring specific type of pathology is due the attempt to correlate the progression of that specific pathology (i.e. TDP43) across specific anatomical brain regions and to correlate them with the available clinical data.***

h) How many folds amyloid beta/ Lewy bodies were more or less in left cortex, hippocampus than right one as it was a qualitative value? ***The described values are semi-quantitative (see Braak or CERAD staging systems). Due to the limited number of cases assessed so far, it is not possible to generalize the results yet. If confirmed though, more quantitative techniques (i.e. stereology) could be used.***

i) How did you omit artifactual variations of immuno/histo-staining intensities and how did you correlate clinico -pathologic situations? ***Usually all sections for a certain immunostain are stained at the same time (to minimize the possibility of variations). All cases analyzed in this study were clinically normal so representing very important cases especially useful to individuate pre-clinical stage of amyloid and tau formation/deposition.***

Additional Comments to Authors:

No

[Editorial recommendation: Please keep JoVE's protocol requirements in mind as you address the above comment - the protocol must contain sufficient details in order to enable users to accurately replicate your technique. We recommend NOT removing any details from the protocol text.]