

# Journal of Visualized Experiments

## Visualizing visual adaptation

--Manuscript Draft--

<b>Manuscript Number:</b>	JoVE54038R4
<b>Full Title:</b>	Visualizing visual adaptation
<b>Article Type:</b>	Invited Methods Article - JoVE Produced Video
<b>Keywords:</b>	Neuroscience, Vision, Perception, Adaptation, Color, Image processing, Psychophysics, Modeling, Simulations
<b>Manuscript Classifications:</b>	6.2: Psychological Phenomena and Processes; 7.14: Ocular Physiological Phenomena; 7.16: Biological Phenomena; 8.1: Natural Science Disciplines; 8.2: Health Occupations; 95.51: Life Sciences (General); 95.53: Behavioral Sciences; 96.61: Computer Programming and Software
<b>Corresponding Author:</b>	Michael Webster University of Nevada Reno Reno, NV UNITED STATES
<b>Corresponding Author Secondary Information:</b>	
<b>Corresponding Author E-Mail:</b>	mwebster@unr.edu
<b>Corresponding Author's Institution:</b>	University of Nevada Reno
<b>Corresponding Author's Secondary Institution:</b>	
<b>First Author:</b>	Michael Webster
<b>First Author Secondary Information:</b>	
<b>Other Authors:</b>	Katherine Tregillus
<b>Order of Authors Secondary Information:</b>	
<b>Abstract:</b>	<p>Many techniques have been developed to visualize how an image would appear to an individual with a different visual sensitivity: e.g. because of optical or age differences, or a color deficiency or disease. This protocol describes a technique for incorporating sensory adaptation into the simulations. The protocol is illustrated with the example of color vision, but is generally applicable to any form of visual adaptation. The protocol uses a simple model of human color vision based on standard and plausible assumptions about the retinal and cortical mechanisms encoding color and how these adjust their sensitivity to both the average color and range of color in the prevailing stimulus. The gains of the mechanisms are adapted so that their mean response under one context is equated for a different context. The simulations help reveal the theoretical limits of adaptation and generate "adapted images" that are optimally matched to a specific environment or observer. They also provide a common metric for exploring the effects of adaptation within different observers or different environments. Characterizing visual perception and performance with these images provides a novel tool for studying the functions and consequences of long-term adaptation in vision or other sensory systems.</p>
<b>Author Comments:</b>	Sorry again for the very long delay and thank you for your patience
<b>Additional Information:</b>	
<b>Question</b>	<b>Response</b>
If this article needs to be "in-press" by a certain date, please indicate the date below and explain in your cover letter.	

**TITLE:****Visualizing Visual Adaptation****AUTHORS:**

Webster, Michael A.  
Department of Psychology  
University of Nevada, Reno  
Reno, NV USA  
[merbster@unr.edu](mailto:merbster@unr.edu)

Tregillus, Katherine E.M.  
Department of Psychology  
University of Nevada, Reno  
Reno, NV USA  
[kmussell@gmail.com](mailto:kmussell@gmail.com)

**CORRESPONDING AUTHOR:**

Webster, Michael A.  
Department of Psychology  
University of Nevada, Reno  
Reno, NV USA  
[merbster@unr.edu](mailto:merbster@unr.edu)

**KEYWORDS:**

Neuroscience, Vision, Perception, Adaptation, Color, Image processing, Psychophysics, Modeling, Simulations

**SHORT ABSTRACT:**

This article describes a novel method for simulating and studying adaptation in the visual system.

**LONG ABSTRACT:**

Many techniques have been developed to visualize how an image would appear to an individual with a different visual sensitivity: e.g. because of optical or age differences, or a color deficiency or disease. This protocol describes a technique for incorporating sensory adaptation into the simulations. The protocol is illustrated with the example of color vision, but is generally applicable to any form of visual adaptation. The protocol uses a simple model of human color vision based on standard and plausible assumptions about the retinal and cortical mechanisms encoding color and how these adjust their sensitivity to both the average color and range of color in the prevailing stimulus. The gains of the mechanisms are adapted so that their mean response under one context is equated for a different context. The simulations help reveal the theoretical limits of adaptation and generate “adapted images” that are optimally matched to a specific environment or observer. They also provide a common metric for exploring the effects of adaptation within different observers or different environments. Characterizing visual

perception and performance with these images provides a novel tool for studying the functions and consequences of long-term adaptation in vision or other sensory systems.

## **INTRODUCTION:**

What might the world look like to others, or to ourselves as we change? Answers to these questions are fundamentally important for understanding the nature and mechanisms of perception and the consequences of both normal and clinical variations in sensory coding. A wide variety of techniques and approaches have been developed to simulate how images might appear to individuals with different visual sensitivities. For example, these include simulations of the colors that can be discriminated by different types of color deficiencies<sup>1-4</sup>, the spatial and chromatic differences that can be resolved by infants or older observers<sup>5-9</sup>, how images appear in peripheral vision<sup>10</sup>, and the consequences of optical errors or disease<sup>11-14</sup>. They have also been applied to visualize the discriminations that are possible for other species<sup>15-17</sup>. Typically, such simulations use measurements of the sensitivity losses in different populations to filter an image and thus reduce or remove the structure they have difficulty seeing. For instance, common forms of color blindness reflect a loss of one of the two photoreceptors sensitive to medium or long wavelengths, and images filtered to remove their signals typically appear devoid of “reddish-greenish” hues<sup>1</sup>. Similarly, infants have poorer acuity, and thus the images processed for their reduced spatial sensitivity appear blurry<sup>5</sup>. These techniques provide invaluable illustrations of what one person can see that another may not. However, they do not – and often are not intended to – portray the actual perceptual experience of the observer, and in some cases may misrepresent the amount and types of information available to the observer.

This article describes a novel technique developed to simulate differences in visual experience which incorporates a fundamental characteristic of visual coding – adaptation<sup>18,19</sup>. All sensory and motor systems continuously adjust to the context they are exposed to. A pungent odor in a room quickly fades, while vision accommodates to how bright or dim the room is. Importantly, these adjustments occur for almost any stimulus attribute, including “high-level” perceptions such as the characteristics of someone’s face<sup>20,21</sup> or their voice<sup>22,23</sup>, as well as calibrating the motor commands made when moving the eyes or reaching for an object<sup>24,25</sup>. In fact, adaptation is likely an essential property of almost all neural processing. This paper illustrates how to incorporate these adaptation effects into simulations of the appearance of images, by basically “adapting the image” to predict how it would appear to a specific observer under a specific state of adaptation<sup>26-29</sup>. Many factors can alter the sensitivity of an observer, but adaptation can often compensate for important aspects of these changes, so that the sensitivity losses are less conspicuous than would be predicted without assuming that the system adapts. Conversely, because adaptation adjusts sensitivity according to the current stimulus context, these adjustments are also important to incorporate for predicting how much perception might vary when the environment varies.

The following protocol illustrates the technique by adapting the color content of images. Color vision has the advantage that the initial neural stages of color coding are relatively well understood, as are the patterns of adaptation<sup>30</sup>. The actual mechanisms and adjustments are

complex and varied, but the main consequences of adaptation can be captured using a simple and conventional two-stage model (Figure 1a). In the first stage, color signals are initially encoded by three types of cone photoreceptors that are maximally sensitive to short, medium or long wavelengths (S, M, and L cones). In the second stage, the signals from different cones are combined within post-receptoral cells to form “color-opponent” channels that receive antagonistic inputs from the different cones (and thus convey “color” information), and “non-opponent” channels that sum together the cone inputs (thus coding “brightness” information). Adaptation occurs at both stages, and adjusts to two different aspects of the color – the mean (in the cones) and the variance (in post-receptoral channels)<sup>30,31</sup>. The goal of the simulations is to apply these adjustments to the model mechanisms and then render the image from their adapted outputs.

The process of adapting images involves six primary components. These are 1) choosing the images; 2) choosing the format for the image spectra; 3) defining the change in color of the environment; 4) defining the change in the sensitivity of the observer; 5) using the program to create the adapted images; and 6) using the images to evaluate the consequences of the adaptation. The following considers each of these steps in detail. The basic model and mechanism responses are illustrated in Figure 1, while Figures 2-5 show examples of images rendered with the model.

## **PROTOCOL:**

NOTE: The protocol illustrated uses a program that allows one to select images and then adapt them using options selected by different drop-down menus.

### **1. Select the image to adapt.**

1.1. Click on the image and browse for the filename of the image to work with. Observe the original image in the upper left pane.

### **2. Specify the stimulus and the observer.**

2.1. Click the “format” menu to choose how to represent the image and the observer.

2.2. Click on the “standard observer” option to model a standard or average observer adapting to a specific color distribution. In this case, use standard equations to convert the RGB values of the image to the cone sensitivities<sup>32</sup>.

2.3. Click on “individual observer” option to model the spectral sensitivities of a specific observer. Because these sensitivities are wavelength-dependent, the program converts the RGB values of the image into gun spectra by using the standard or measured emission spectra for the display.

2.4. Click on “natural spectra” option to approximate actual spectra in the world. This option converts the RGB values to spectra, for example by using standard basis functions<sup>33</sup> or Gaussian spectra<sup>34</sup> to approximate the corresponding spectrum for the image color.

### **3. Select the adaptation condition.**

3.1. Adapt either the same observer to different environments (e.g. to the colors of a forest vs. urban landscape), or different observers to the same environment (e.g. a normal vs. color deficient observer).

3.1.1. In the former case, use the menus to select the environments. In the latter, use the menus to define the sensitivity of the observer.

3.2. To set the environments, select the “reference” and “test” environments from the dropdown menus. These control the two different states of adaptation by loading the mechanism responses for different environments.

3.2.1. Choose the “reference” menu to control the starting environment. This is the environment the subject is adapted to while viewing the original image.

NOTE: The choices shown have been precalculated for different environments. These were derived from measurements of the color gamuts for different collections of images. For example, one application examined how color perception might vary with changes in the seasons, by using calibrated images taken from the same location at different times<sup>27</sup>. Another study, exploring how adaptation might affect color percepts across different locations, represented the locations by sampling images of different scene categories<sup>29</sup>.

3.2.2. Select the “user defined” environment to load the values for a custom environment. Observe a window to browse and select a particular file. To create these files for independent images, display each image to be included (as in step 1) and then click the “save image responses” button.

NOTE: This will display a window where one can create or append to an excel file storing the responses to each image. To create a new file, enter the filename, or browse for an existing file. For existing files, the responses to the current image are added and the responses to all images automatically averaged. These averages are input for the reference environment when the file with the “user defined” option is selected.

3.2.3. Select the “test” menu to access a list of environments for the image to be adjusted for. Select the “current image” option to use the mechanism responses for the displayed image.

NOTE: This option assumes the subjects are adapting to the colors in the image that is currently being viewed. Otherwise select one of the precalculated environments or the “user defined” option to load the test environment.

### **4. Select the spectral sensitivity of the observer.**

NOTE: For the adaptation effects of different environments, the observer will usually remain constant, and is set to the default “standard observer” with average spectral sensitivity. There

are three menus for setting an individual spectral sensitivity, which control the amount of screening pigment or the spectral sensitivities of the observer.

4.1. Click on the “lens” menu to select the density of the lens pigment. The different options allow one to choose the density characteristic of different ages.

4.2. Click on the “macular” menu to similarly select the density of the macular pigment. Observe these options in terms of the peak density of the pigment.

4.3. Click on the “cones” menu to choose between observers with normal trichromacy or different types of anomalous trichromacy.

NOTE: Based on the choices the program defines the cone spectral sensitivities of the observer and a set of 26 post-receptoral channels that linearly combine the cone signals to roughly uniformly sample different color and luminance combinations.

## 5. **Adapt the image.**

5.1. Click the “adapt” button.

NOTE: This executes the code for calculating the responses of the cones and post-receptoral mechanisms to each pixel in the image. The response is scaled so that the mean response to the adapting color distribution equals the mean responses to the reference distribution, or so that the average response is the same for an individual or reference observer. The scaling is multiplicative to simulate von Kries adaptation<sup>35</sup>. The new image is then rendered by summing the mechanism responses and converting back to RGB values for display. Details of the algorithm are given in <sup>26-29</sup>.

5.2. Observe three new images on the screen. These are labeled as 1) “unadapted” – how the test image should appear to someone fully adapted to the reference environment; 2) “cone adaptation” – this shows the image adjusted only for adaptation in the receptors; and 3) “full adaptation” – this shows the image predicted by complete adaptation to the change in the environment or the observer.

5.3. Click the “save images” button to save the three calculated-images. Observe a new window on the screen to browse for the folder and select the filename.

## 6. **Evaluate the consequences of the adaptation.**

NOTE: The original reference and adapted images simulate how the same image should appear under the two states of modeled adaptation, and importantly, differ only because of the adaptation state. The differences in the images thus provide insight into consequences of the adaptation.

6.1. Visually look at the differences between the images.

NOTE: Simple inspection of the images can help show how much color vision might vary when living in different color environments, or how much adaptation might compensate for a sensitivity change in the observer.

6.2. Quantify these adaptation effects by using analyses or behavioral measurements with the images to empirically evaluate the consequences of the adaptation<sup>29</sup>.

6.2.1. Measure how color appearance changes. For example, compare the colors in the two images to measure how color categories or perceptual salience shift across different environments or observers. For example, use analyses of the changes in color with adaptation to calculate how much the unique hues (e.g. pure yellow or blue) could theoretically vary because of variations in the observer's color environment<sup>29</sup>.

6.2.2. Ask how the adaptation affects visual sensitivity or performance. For example, use the adapted images to compare whether visual search for a novel color is faster when observers are first adapted to the colors of the background. Conduct the experiment by superimposing on the images an array of targets and differently-colored distractors that were adapted along with the images, with the reaction times measured for locating the odd target<sup>29</sup>.

### REPRESENTATIVE RESULTS:

Figures 2-4 illustrate the adaptation simulations for changes in the observer or the environment. Figure 2 compares the predicted appearance of Cezanne's *Still Life with Apples* for a younger and older observer who differ only in the density of the lens pigment<sup>28</sup>. The original image as seen through the younger eye (2a) appears much yellower and dimmer through the more densely pigmented lens (2b). (The corresponding shifts in the mean color and chromatic responses is illustrated in Figure 1c.) However, adaptation to the average spectral change discounts almost all of the color appearance change (2c). The original color response is almost completely recovered by the adaptation in the cones, so that subsequent contrast changes have negligible effect.

Figure 3 shows van Gogh's *Irises* filtered to simulate color appearance in a deuteranomalous observer, whose normal M photopigment is shifted in peak sensitivity to within 6 nm of the L photopigment<sup>28</sup>. Adaptation in the cones again adjusts for the mean stimulus chromaticity, but the L vs. M contrasts from the anomalous pigments are weak (3b), compressing the mechanism responses along this axis (Figure 1d). It has been suggested that van Gogh might have exaggerated the use of color to compensate for a color deficiency, since the colors he portrayed may appear more natural when filtered for a deficiency. However, contrast adaptation to the reduced contrasts predicts that the image should again "appear" very similar to the normal and anomalous trichromat (3c), even if the latter has much weaker intrinsic sensitivity to the L vs. M dimension. Many anomalous trichromats in fact report reddish-greenish contrasts as more conspicuous than would be predicted by their photopigment sensitivities<sup>36,37</sup>.

Figure 4 shows the simulations for an environmental change, by simulating how the hazy image portrayed by Monet's *Sunrise (Marine)* might appear to an observer fully adapted to the haze

(or to an artist fully adapted to his painting). Before adaptation the image appears murky and largely monochrome (4a), and correspondingly the mechanism responses to the image contrast are weak (Figure 1e). However, adaptation to both the mean chromatic bias and the reduced chromatic contrast (in this case to match the mechanism responses for typical outdoor scenes) normalizes and expands the perceived color gamut so that it is comparable to the range of color percepts experienced for well-lit outdoor scene (4b).

Finally, Figure 5 illustrates the two examples noted in section 6.2 of the protocol for using the model to study color vision. Figure 5a shows the Munsell Palette under adaptation to a lush or arid environment, while Figure 5b plots the shifts in the palette stimuli required to appear pure red, green, blue, or yellow, when the same observer is adapted to a range of different simulated environments. This range is comparable to measurements of the actual stimulus range of these focal colors as measured empirically in the World Color Survey<sup>29</sup>. Figure 5c instead shows how a set of embedded colors appear before or after adaptation to a Martian landscape. Adapting the set for the image led to significantly shorter reaction times for finding the unique colors in a visual search task<sup>29</sup>.

### Figure 1: The model.

a) Responses are modeled for mechanisms with the sensitivities of the cones (which adapt to the stimulus mean) or post-receptoral combinations of the cones (which adapt to the stimulus variance). b) Each post-receptoral mechanism is tuned to a different direction in the color-luminance space, as indicated by the vectors. For the simulations 26 mechanisms are computed, which sample the space in 45° intervals (shown for the L vs. M and S vs. LM plane, and the L vs. M and luminance plane). c) Responses of the mechanisms in the equiluminant (L vs. M and S vs. LM) plane to the images in the top and middle panel of Figure 2. Mean contrast responses are shown at 22.5° intervals to more fully portray the response distribution, though the model is based on channels at 45° intervals. In the original image (2a) the mean chromaticity is close to gray (0,0) and colors are biased along a bluish-yellowish axis. Increasing the lens density of the observer produces a large shift in the mean toward yellow (2b). d) Contrast responses for the images shown in Figure 3a and 3b. The cone contrasts in the original (3a) are compressed along the L vs. M axis for the color deficient observer (3b). e) Contrast responses for the images shown in Figure 4a and 4b. The low contrast responses for the original image (4a) are expanded following adaptation, which matches the mean responses to the painting to the responses for a color distribution typical of outdoor natural scenes (4b).

### Figure 2: Simulating the consequences of lens aging.

Cezanne's *Still Life with Apples* (a) processed to simulate an aging lens (b) and adaptation to the lens (c). Digital image courtesy of the Getty's Open Content Program.

### Figure 3: Simulating anomalous trichromacy.

van Gogh's *Irises* (a) simulating the reduced color contrasts in a color-deficient observer (b), and the predicted appearance in observers fully adapted to the reduced contrast (c). Digital image courtesy of the Getty's Open Content Program.



**Figure 4: Simulating adaptation to a low contrast environment.**

Monet's *Sunrise (Marine)*. The original image (a) is processed to simulate the color appearance for an observer adapted to the low contrasts in the scene (b). This was done by adjusting the sensitivity of each mechanism's sensitivity so that the average response to the colors in the paintings is equal to the average response to colors measured for a collection of natural outdoor scenes. Digital image courtesy of the Getty's Open Content Program.

**Figure 5. Using the model to examine visual performance.**

a) The Munsell palette rendered under adaptation to the colors of a lush or arid environment. b) Chips in the palette that should appear pure red, green, blue, or yellow after adaptation to a range of different color environments. Light-shaded symbols plot the range of average chip selections from the languages of the World Color Survey. c) Images of the surface of Mars as they might appear to an observer adapted to Earth or to Mars. Superimposed patches show examples of the stimuli added for the visual search task, and include a set of uniformly colored distractors and one differently-colored target. d) In the experiment search times were measured for locating the odd target, and were substantially shorter within the adapted Mars-adapted images.

**DISCUSSION:**

The illustrated protocol demonstrates how the effects of adaptation to a change in the environment or the observer can be portrayed in images. The form this portrayal takes will depend on the assumptions made for the model – for example, how color is encoded, and how the encoding mechanisms respond and adapt. Thus the most important step is deciding on the model for color vision – for example what the properties of the hypothesized channels are, and how they are assumed to adapt. The other important steps are to set appropriate parameters for the properties of the two environments, or two observer sensitivities, that you are adapting between.

The model illustrated is very simple, and there are many ways in which it is incomplete and could be expanded depending on the application. For example, color information is not encoded independently of form, and the illustrated simulations take no account of the spatial structure of the images or of neural receptive fields, or of known interactions across mechanisms such as contrast normalization<sup>38</sup>. Similarly, all pixels in the images are given equal weight, and thus the simulations do not incorporate spatial factors such as how scenes are sampled with eye movements. Adaptation in the model is also assumed to represent simple multiplicative scaling. This is appropriate for some forms of chromatic adaptation but may not correctly describe the response changes at post-receptoral levels. Similarly, the contrast response functions in the model are linear and thus do not simulate the actual response functions of neurons. A further important limitation is that the illustrated simulations do not incorporate noise. If this noise occurs at or prior to the sites of the adaptation, then adaptation may adjust both signal and noise and consequently may have very different effects on appearance and visual performance<sup>39</sup>. One way to simulate the effects of noise is to introduce random perturbations in the stimulus<sup>28</sup>. However, this will not mimic what this noise “looks like” to an observer.

As suggested by the illustrated examples, the simulations can capture many properties of color experience that are not evident when considering only the spectral and contrast sensitivity of the observer, and in particular function to highlight the importance of adaptation in normalizing color perception and compensating for the sensitivity limits of the observer. In this regard, the technique provides a number of advantages and applications for visualizing or predicting visual percepts. These include the following:

*Better simulations of variant vision.*

As noted, filtering an image for a different sensitivity reveals what one experiences when information in the image is altered, but does less well at predicting what an observer with that sensitivity would experience. As an example, a gray patch filtered to simulate the yellowing lens of an older observer's eye looks yellower<sup>9</sup>. But older observers who are accustomed to their aged lenses instead describe and probably literally see the stimulus as gray<sup>40</sup>. As shown here, this is a natural consequence of adaptation in the visual system<sup>28</sup>, and thus incorporating this adaptation is important for better visualizing an individual's percepts.

*A common mechanism predicting differences between observers and between environments.*

Most simulation techniques are focused on predicting changes in the observer. Yet adaptation is also routinely driven by changes in the world<sup>18,19</sup>. Individuals immersed in different visual environments (e.g. urban vs. rural, or arid vs. lush) are exposed to very different patterns of stimulation which may lead to very different states of adaptation<sup>41,42</sup>. Moreover, these differences are accentuated among individuals occupying different niches in an increasingly specialized and technical society (e.g. an artist, radiologist, video game player, or scuba diver). Perceptual learning and expertise have been widely studied and depend on many factors<sup>43-45</sup>. But one of these may be simple exposure<sup>46,47</sup>. For example, one account of the "other race" effect, in which observers are better at distinguishing faces with our own ethnicity, is because they are adapted to the faces they commonly encounter<sup>48,49</sup>. Adaptation provides a common metric for evaluating the impact of a sensitivity change vs. stimulus change on perception, and thus for predicting how two different observers might experience the same world vs. placing the same observer in two different worlds.

*Evaluating the long-term consequences of adaptation.*

Actually adapting observers and then measuring how their sensitivity and perception change is a well-established and extensively investigated psychophysical technique. However, these measurements are typically restricted to short term exposures lasting minutes or hours. Increasing evidence suggests that adaptation also operates over much longer timescales that are much more difficult to test empirically<sup>50-54</sup>. Simulating adaptation has the advantage of pushing adaptation states to their theoretical long-term limits and thus exploring timescales that are not practical experimentally. It also allows for testing the perceptual consequences of gradual changes such as aging or a progressive disease.

*Evaluating the potential benefits of adaptation.*

A related problem is that while many functions have been proposed for adaptation, performance improvements are often not evident in studies of short-term adaptation, and this may in part be because these improvements arise only over longer timescales. Testing how well observers can perform different visual tasks with images adapted to simulate these timescales provides a novel method for exploring the perceptual benefits and costs of adaptation<sup>29</sup>.

#### *Testing mechanisms of visual coding and adaptation.*

The simulations can help to visualize and compare both different models of visual mechanisms and different models of how these mechanisms adjust their sensitivity. Such comparisons can help reveal the relative importance of different aspects of visual coding for visual performance and perception.

#### *Adapting images to observers.*

To the extent that adaptation helps one to see better, such simulations provide a potentially powerful tool for developing models of image processing that can better highlight information for observers. Such image enhancement techniques are widespread, but the present approach is designed to adjust an image in ways in which the actual brain adjusts, and thus to simulate the actual coding strategies that the visual system evolved to exploit. Pre-processing images in this way could in principle remove the need for observers to visually acclimate to a novel environment, by instead adjusting images to match the adaptation states that observers are currently in<sup>26,29</sup>.

It may seem unrealistic to suggest that adaptation could in practice discount nearly fully a sensitivity change from our percepts, yet there are many examples where percepts do appear unaffected by dramatic sensitivity differences<sup>55</sup>, and it is an empirical question how complete the adaptation is for any given case - one that adapted images could also be used to address. In any case, if the goal is to visualize the perceptual experience of an observer, then these simulations arguably come much closer to characterizing that experience than traditional simulations based only on filtering the image. Moreover, they provide a novel tool for predicting and testing the consequences and functions of sensory adaptation<sup>29</sup>. Again this adaptation is ubiquitous in sensory processing, and similar models could be exploited to explore the impact of adaptation on other visual attributes and other senses.

#### **ACKNOWLEDGMENTS:**

Supported by National Institutes of Health grant EY-10834.

#### **DISCLOSURES:**

The authors have nothing to disclose.

#### **REFERENCES:**

- 1 Vienot, F., Brettel, H., Ott, L., Ben M'Barek, A. & Mollon, J. D. What do colour-blind people see? *Nature* **376**, 127-128, doi:10.1038/376127a0 (1995).
- 2 Brettel, H., Vienot, F. & Mollon, J. D. Computerized simulation of color appearance for dichromats. *J Opt Soc Am A Opt Image Sci Vis* **14**, 2647-2655, doi:10.1364/JOSAA.14.002647

(1997).

- 3 Flatla, D. R. & Gutwin, C. So that's what you see: building understanding with personalized simulations of colour vision deficiency. *Proceedings of the 14th international ACM SIGACCESS conference on Computers and accessibility*, 167-174, doi:10.1145/2384916.2384946 (2012).
- 4 Machado, G. M., Oliveira, M. M. & Fernandes, L. A. A physiologically-based model for simulation of color vision deficiency. *IEEE Trans. Vis. Comput. Graphics* **15**, 1291-1298, doi:10.1109/TVCG.2009.113 (2009).
- 5 Teller, D. Y. First glances: the vision of infants. the Friedenwald lecture. *Invest. Ophthalmol. Vis. Sci.* **38**, 2183-2203 (1997).
- 6 Wade, A., Dougherty, R. & Jagoe, I. <<http://www.tinyeyes.com/>> (2016).
- 7 Ball, L. J. & Pollack, R. H. Simulated aged performance on the embedded figures test. *Exp. Aging Res* **15**, 27-32, doi:10.1080/03610738908259755 (1989).
- 8 Sjostrom, K. P. & Pollack, R. H. The effect of simulated receptor aging on two types of visual illusions. *Psychon Sci* **23**, 147-148, doi:10.3758/BF03336050 (1971).
- 9 Lindsey, D. T. & Brown, A. M. Color naming and the phototoxic effects of sunlight on the eye. *Psychol Sci* **13**, 506-512, doi:10.1111/1467-9280.00489 (2002).
- 10 Raj, A. & Rosenholtz, R. What your design looks like to peripheral vision. *Proceedings of the 7th Symposium on Applied Perception in Graphics and Visualization* 88-92, doi:10.1145/1836248.1836264 (2010).
- 11 Perry, J. S. & Geisler, W. S. Gaze-contingent real-time simulation of arbitrary visual fields. *International Society for Optics and Photonics: Electronic Imaging*. 57-69, doi:10.1117/12.469554 (2002).
- 12 Vinnikov, M., Allison, R. S. & Swierad, D. Real-time simulation of visual defects with gaze-contingent display. *Proceedings of the 2008 symposium on Eye tracking research & applications*, 127-130, doi:10.1145/1344471.1344504 (2008).
- 13 Hogervorst, M. A. & van Damme, W. J. M. Visualizing visual impairments. *Gerontechnol* **5**, 208-221, doi:10.4017/gt.2006.05.04.003.00 (2006).
- 14 Aguilar, C. & Castet, E. Gaze-contingent simulation of retinopathy: some potential pitfalls and remedies. *Vision res* **51**, 997-1012, doi:10.1016/j.visres.2011.02.010 (2011).
- 15 Rowe, M. P. & Jacobs, G. H. Cone pigment polymorphism in New World monkeys: are all pigments created equal? *Visual neurosci* **21**, 217-222, doi:10.1017/S0952523804213104 (2004).
- 16 Rowe, M. P., Baube, C. L., Loew, E. R. & Phillips, J. B. Optimal mechanisms for finding and selecting mates: how threespine stickleback ( *Gasterosteus aculeatus*) should encode male throat colors. *J. Comp. Physiol. A Neuroethol. Sens. Neural. Behav. Physiol.* **190**, 241-256, doi:10.1007/s00359-004-0493-8 (2004).
- 17 Melin, A. D., Kline, D. W., Hickey, C. M. & Fedigan, L. M. Food search through the eyes of a monkey: a functional substitution approach for assessing the ecology of primate color vision. *Vision Res* **86**, 87-96, doi:10.1016/j.visres.2013.04.013 (2013).
- 18 Webster, M. A. Adaptation and visual coding. *J vision* **11**, 3: 1-23, doi:10.1167/11.5.3 (2011).
- 19 Webster, M. A. Visual adaptation. *Annu Rev Vision Sci* **1**, 547-567, doi:10.1146/annurev-vision-082114-035509 (2015).
- 20 Webster, M. A., Kaping, D., Mizokami, Y. & Duhamel, P. Adaptation to natural facial

categories. *Nature* **428**, 557-561, doi:10.1038/nature02420 (2004).

21 Webster, M. A. & MacLeod, D. I. A. Visual adaptation and face perception. *Philos. Trans. R. Soc. Lond., B, Biol. Sci.* **366**, 1702-1725, doi:10.1098/rstb.2010.0360 (2011).

22 Schweinberger, S. R. *et al.* Auditory adaptation in voice perception. *Curr Biol* **18**, 684-688, doi:10.1016/j.cub.2008.04.015 (2008).

23 Yovel, G. & Belin, P. A unified coding strategy for processing faces and voices. *Trends cognit sci* **17**, 263-271, doi:10.1016/j.tics.2013.04.004 (2013).

24 Shadmehr, R., Smith, M. A. & Krakauer, J. W. Error correction, sensory prediction, and adaptation in motor control. *Annu rev neurosci* **33**, 89-108, doi:10.1146/annurev-neuro-060909-153135 (2010).

25 Wolpert, D. M., Diedrichsen, J. & Flanagan, J. R. Principles of sensorimotor learning. *Nat rev Neurosci* **12**, 739-751, doi:10.1038/nrn3112 (2011).

26 McDermott, K., Juricevic, I., Bebis, G. & Webster, M. A. in *Human Vision and Electronic Imaging, SPIE Vol. 68060* eds B.E. Rogowitz & T.N. Pappas) V-1-10 (2008).

27 Juricevic, I. & Webster, M. A. Variations in normal color vision. V. Simulations of adaptation to natural color environments. *Visual neurosci* **26**, 133-145, doi:S0952523808080942 [pii] 10.1017/S0952523808080942 (2009).

28 Webster, M. A., Juricevic, I. & McDermott, K. C. Simulations of adaptation and color appearance in observers with varying spectral sensitivity. *Ophthalmic Physiol Opt* **30**, 602-610, doi:10.1111/j.1475-1313.2010.00759.x (2010).

29 Webster, M. A. Probing the functions of contextual modulation by adapting images rather than observers. *Vision res*, doi:10.1016/j.visres.2014.09.003 (2014).

30 Webster, M. A. Human colour perception and its adaptation. *Network: Computation in Neural Systems* **7**, 587-634 (1996).

31 Webster, M. A. & Mollon, J. D. Colour constancy influenced by contrast adaptation. *Nature* **373**, 694-698, doi:10.1038/373694a0 (1995).

32 Brainard, D. H. & Stockman, A. in *OSA Handbook of Optics* (ed M. Bass) 10-11 (2010).

33 Maloney, L. T. Evaluation of linear models of surface spectral reflectance with small numbers of parameters. *J Opt Soc Am A Opt Image Sci Vis* **3**, 1673-1683, doi:10.1364/JOSAA.3.001673 (1986).

34 Mizokami, Y. & Webster, M. A. Are Gaussian spectra a viable perceptual assumption in color appearance? *J Opt Soc Am A Opt Image Sci Vis* **29**, A10-18, doi:10.1364/JOSAA.29.000A10 (2012).

35 Chichilnisky, E. J. & Wandell, B. A. Photoreceptor sensitivity changes explain color appearance shifts induced by large uniform backgrounds in dichoptic matching. *Vision res* **35**, 239-254, doi:0042-6989(94)00122-3 [pii] (1995).

36 Boehm, A. E., MacLeod, D. I. & Bosten, J. M. Compensation for red-green contrast loss in anomalous trichromats. *J vision* **14**, doi:10.1167/14.13.19 (2014).

37 Regan, B. C. & Mollon, J. D. in *Colour Vision Deficiencies* Vol. XIII (ed C.R. Cavonius) 261-270 (Dordrecht, 1997).

38 Carandini, M. & Heeger, D. J. Normalization as a canonical neural computation. *Nature reviews. Neurosci* **13**, 51-62, doi:10.1038/nrn3136 (2011).

39 Rieke, F. & Rudd, M. E. The challenges natural images pose for visual adaptation. *Neuron*

**64**, 605-616, doi:10.1016/j.neuron.2009.11.028 (2009).

40 Hardy, J. L., Frederick, C. M., Kay, P. & Werner, J. S. Color naming, lens aging, and grue: what the optics of the aging eye can teach us about color language. *Psychol sci* **16**, 321-327, doi:10.1111/j.0956-7976.2005.01534.x (2005).

41 Webster, M. A. & Mollon, J. D. Adaptation and the color statistics of natural images. *Vision res* **37**, 3283-3298 (1997).

42 Webster, M. A., Mizokami, Y. & Webster, S. M. Seasonal variations in the color statistics of natural images. *Network* **18**, 213-233, doi:10.1080/09548980701654405 (2007).

43 Sagi, D. Perceptual learning in Vision Research. *Vision res*, doi:10.1016/j.visres.2010.10.019 (2011).

44 Lu, Z. L., Yu, C., Watanabe, T., Sagi, D. & Levi, D. Perceptual learning: functions, mechanisms, and applications. *Vision res* **50**, 365-367, doi:10.1016/j.visres.2010.01.010 (2009).

45 Bavelier, D., Green, C. S., Pouget, A. & Schrater, P. Brain plasticity through the life span: learning to learn and action video games. *Annu rev neurosci* **35**, 391-416, doi:10.1146/annurev-neuro-060909-152832 (2012).

46 Kompaniez, E., Abbey, C. K., Boone, J. M. & Webster, M. A. Adaptation aftereffects in the perception of radiological images. *PloS one* **8**, e76175, doi:10.1371/journal.pone.0076175 (2013).

47 Ross, H. *Behavior and Perception in Strange Environments*. (George Allen & Unwin, 1974).

48 Armann, R., Jeffery, L., Calder, A. J. & Rhodes, G. Race-specific norms for coding face identity and a functional role for norms. *J vision* **11**, 9, doi:10.1167/11.13.9 (2011).

49 Oruc, I. & Barton, J. J. Adaptation improves discrimination of face identity. *Proc. R. Soc. A* **278**, 2591-2597, doi:10.1098/rspb.2010.2480 (2011).

50 Kording, K. P., Tenenbaum, J. B. & Shadmehr, R. The dynamics of memory as a consequence of optimal adaptation to a changing body. *Nature neurosci* **10**, 779-786, doi: 10.1038/nn1901 (2007).

51 Neitz, J., Carroll, J., Yamauchi, Y., Neitz, M. & Williams, D. R. Color perception is mediated by a plastic neural mechanism that is adjustable in adults. *Neuron* **35**, 783-792, doi:S0896627302008188 [pii] (2002).

52 Delahunt, P. B., Webster, M. A., Ma, L. & Werner, J. S. Long-term renormalization of chromatic mechanisms following cataract surgery. *Visual neurosci* **21**, 301-307, doi:10.1017/S0952523804213025 (2004).

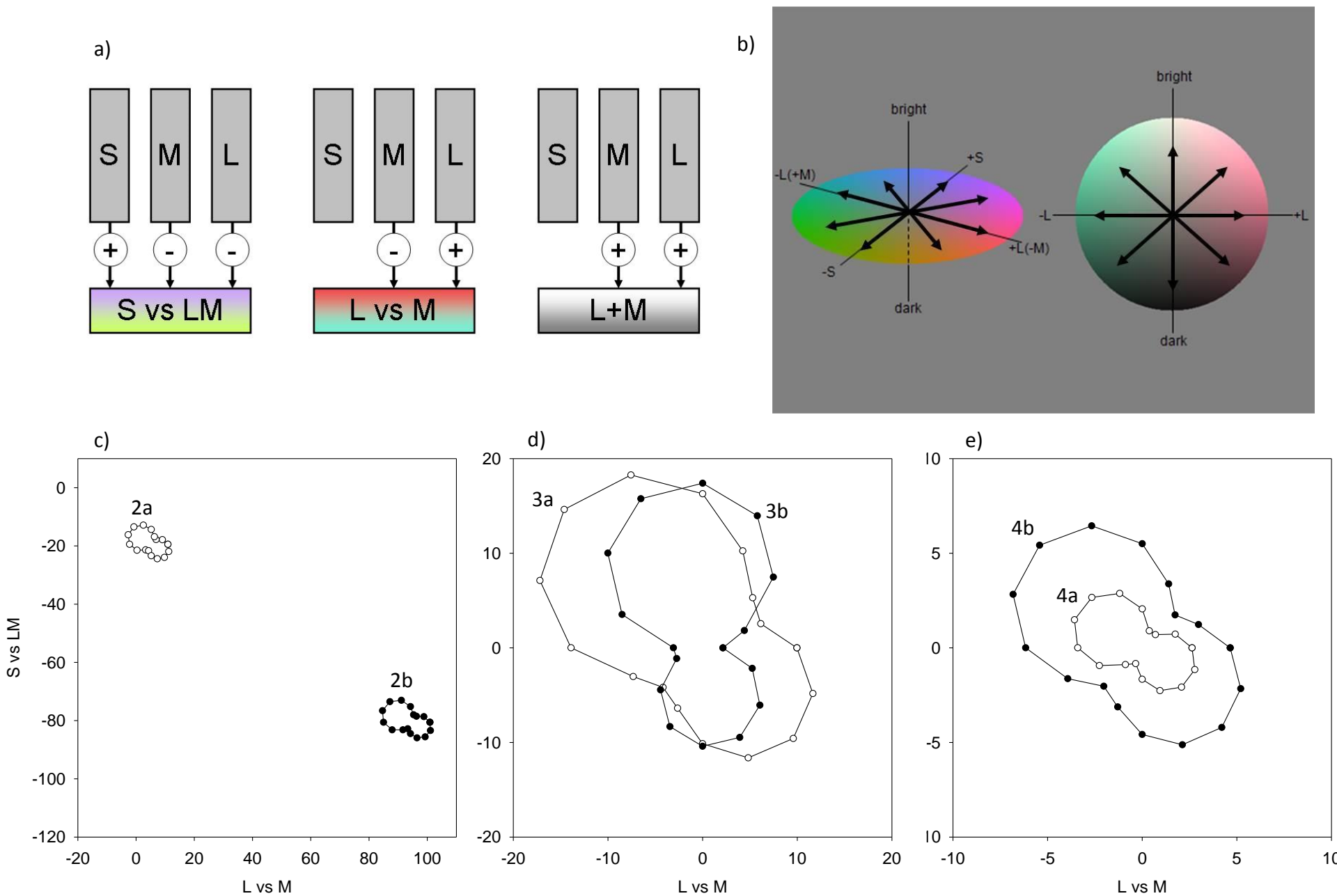
53 Bao, M. & Engel, S. A. Distinct mechanism for long-term contrast adaptation. *Proc Natl Acad Sci USA* **109**, 5898-5903, doi:10.1073/pnas.1113503109 (2012).

54 Kwon, M., Legge, G. E., Fang, F., Cheong, A. M. & He, S. Adaptive changes in visual cortex following prolonged contrast reduction. *J vision* **9**, 20 21-16 (2009).

55 Webster, M. A. in *Handbook of Color Psychology* eds A. Elliott, M. D. Fairchild, & A. Franklin 197-215 (Cambridge University Press, 2015).

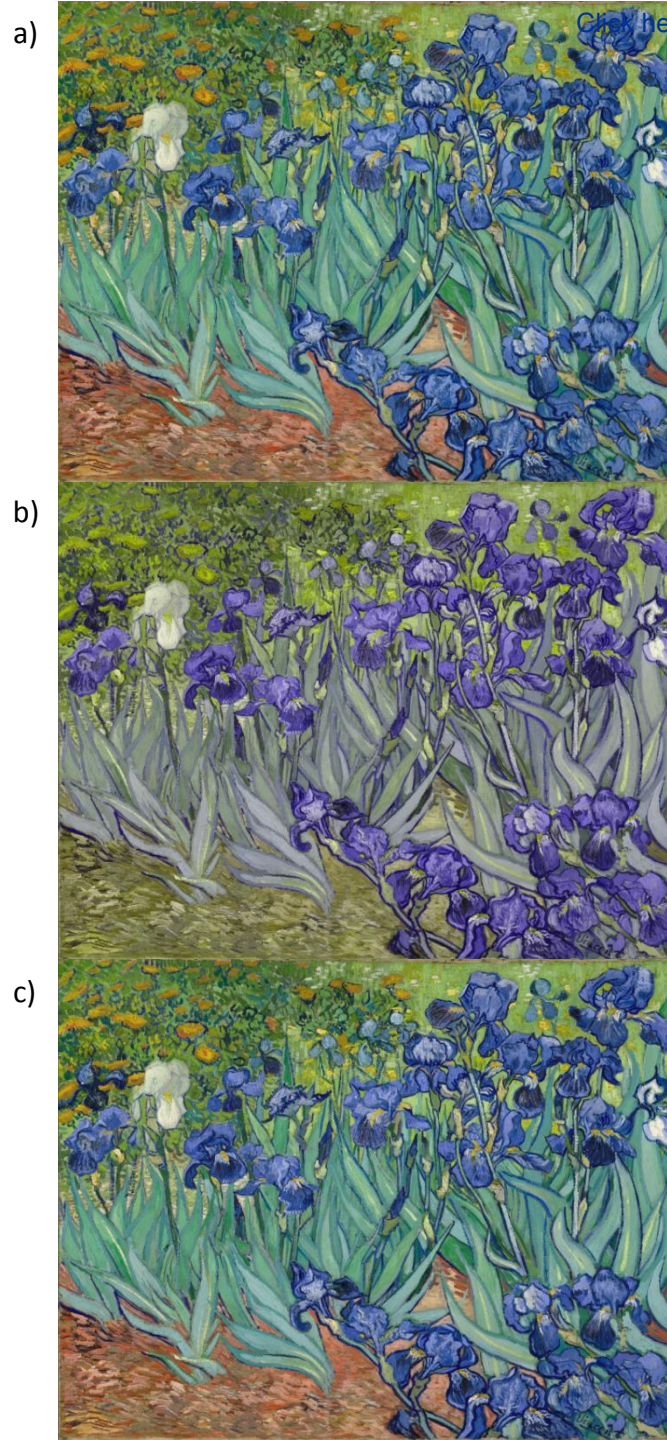
Figure

[Click here to download Figure jove webster fig 1 rev.pdf](#)









a)

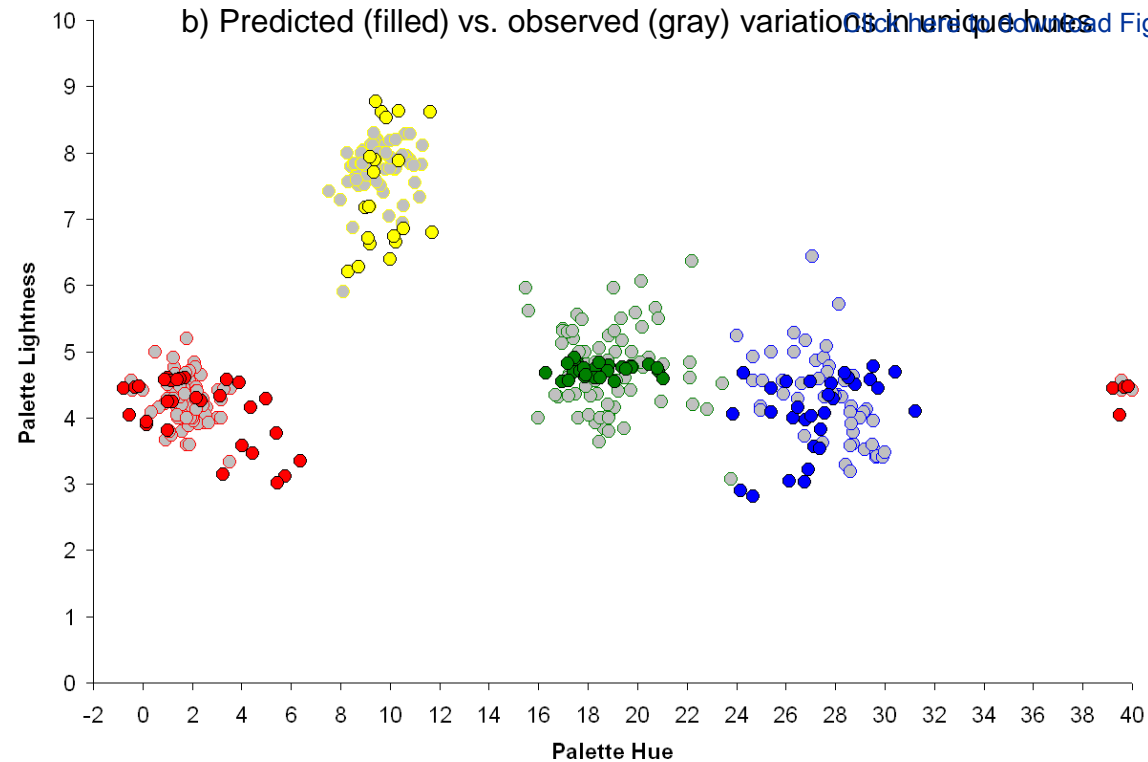
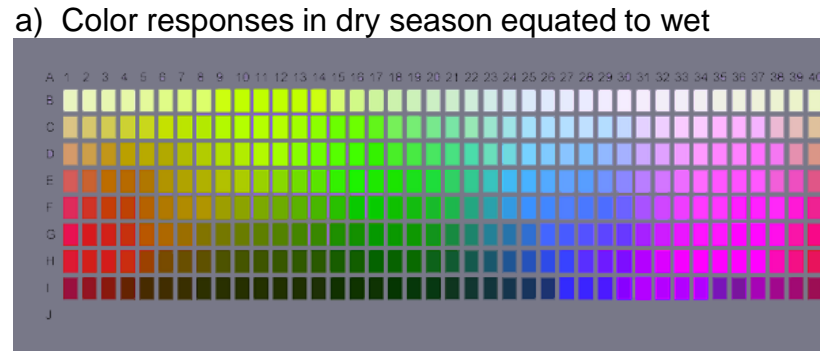


b)

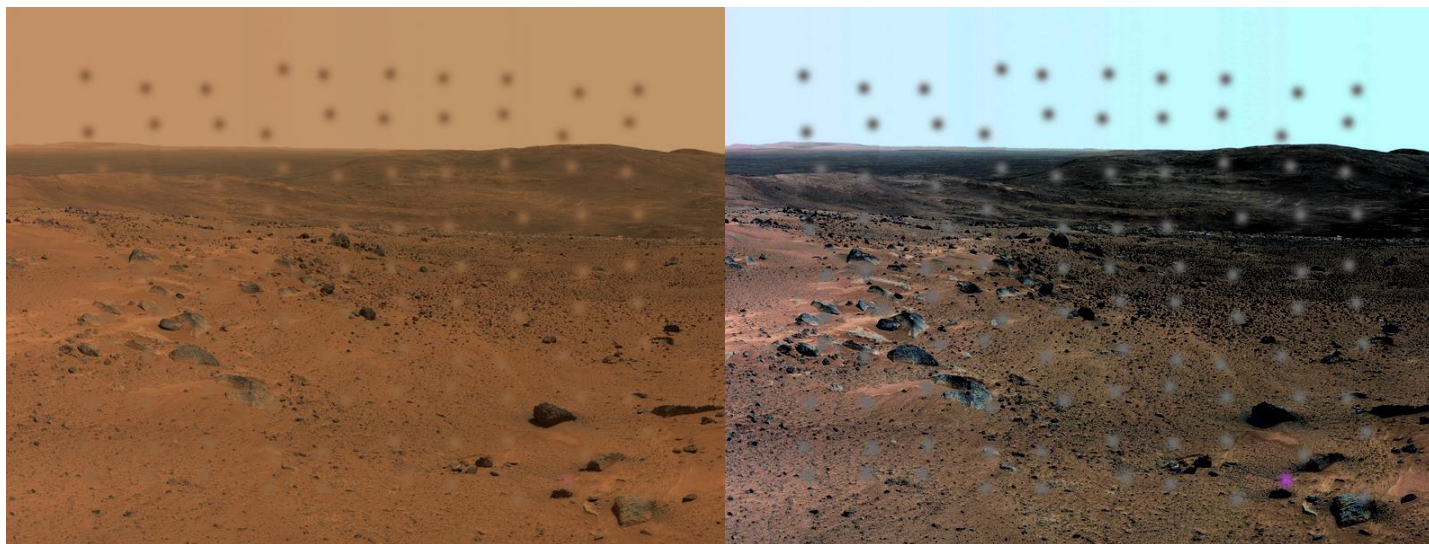




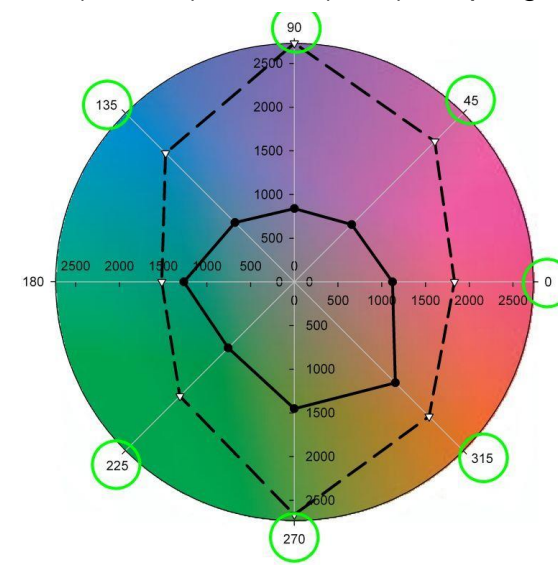
Figure



c) Mars before or after adaptation, with adapted colors for the visual search task



d) Color search times before (dashed) or after (solid) adapting



Computer

Images to adapt

Programming language (e.g. Visual Basic or Matlab)

Program for processing the images

Observer spectral sensitivities (for applications involving observer-specific adaptation)

Device emission spectra (for device-dependent applications)

# ARTICLE AND VIDEO LICENSE AGREEMENT

Title of Article:

Author(s):

Item 1 (check one box): The Author elects to have the Materials be made available (as described at

<http://www.jove.com/publish>) via: ☒ Standard Access ☐ Open Access

Item 2 (check one box):



The Author is NOT a United States government employee.



The Author is a United States government employee and the Materials were prepared in the course of his or her duties as a United States government employee.



The Author is a United States government employee but the Materials were NOT prepared in the course of his or her duties as a United States government employee.

## ARTICLE AND VIDEO LICENSE AGREEMENT

1. **Defined Terms.** As used in this Article and Video License Agreement, the following terms shall have the following meanings: “**Agreement**” means this Article and Video License Agreement; “**Article**” means the article specified on the last page of this Agreement, including any associated materials such as texts, figures, tables, artwork, abstracts, or summaries contained therein; “**Author**” means the author who is a signatory to this Agreement; “**Collective Work**” means a work, such as a periodical issue, anthology or encyclopedia, in which the Materials in their entirety in unmodified form, along with a number of other contributions, constituting separate and independent works in themselves, are assembled into a collective whole; “**CRC License**” means the Creative Commons Attribution-Non Commercial-No Derivs 3.0 Unported Agreement, the terms and conditions of which can be found at: <http://creativecommons.org/licenses/by-nc-nd/3.0/legalcode>; “**Derivative Work**” means a work based upon the Materials or upon the Materials and other pre-existing works, such as a translation, musical arrangement, dramatization, fictionalization, motion picture version, sound recording, art reproduction, abridgment, condensation, or any other form in which the Materials may be recast, transformed, or adapted; “**Institution**” means the institution, listed on the last page of this Agreement, by which the Author was employed at the time of the creation of the Materials; “**JoVE**” means MyJove Corporation, a Massachusetts corporation and the publisher of *The Journal of Visualized Experiments*; “**Materials**” means the Article and / or the Video; “**Parties**” means the Author and JoVE; “**Video**” means any video(s) made by the Author, alone or in conjunction with any other parties, or by JoVE or its affiliates or agents, individually or in collaboration with the Author or any other parties, incorporating all or any portion of the Article, and in which the Author may or may not appear.

2. **Background.** The Author, who is the author of the Article, in order to ensure the dissemination and protection of the Article, desires to have the JoVE publish the Article and create and transmit videos based on the Article. In furtherance of such goals, the Parties desire to memorialize in this Agreement the respective rights of each Party in and to the Article and the Video.

3. **Grant of Rights in Article.** In consideration of JoVE agreeing to publish the Article, the Author hereby grants to JoVE, subject to **Sections 4** and **7** below, the exclusive, royalty-free, perpetual (for the full term of copyright in the Article, including any extensions thereto) license (a) to publish, reproduce, distribute, display and store the Article in all forms, formats and media whether now known or hereafter developed (including without limitation in print, digital and electronic form) throughout the world, (b) to translate the Article into other languages, create adaptations, summaries or extracts of the Article or other Derivative Works (including, without limitation, the Video) or Collective Works based on all or any portion of the Article and exercise all of the rights set forth in (a) above in such translations, adaptations, summaries, extracts, Derivative Works or Collective Works and (c) to license others to do any or all of the above. The foregoing rights may be exercised in all media and formats, whether now known or hereafter devised, and include the right to make such modifications as are technically necessary to exercise the rights in other media and formats. If the “Open Access” box has been checked in **Item 1** above, JoVE and the Author hereby grant to the public all such rights in the Article as provided in, but subject to all limitations and requirements set forth in, the CRC License.

## ARTICLE AND VIDEO LICENSE AGREEMENT

4. Retention of Rights in Article. Notwithstanding the exclusive license granted to JoVE in **Section 3** above, the Author shall, with respect to the Article, retain the non-exclusive right to use all or part of the Article for the non-commercial purpose of giving lectures, presentations or teaching classes, and to post a copy of the Article on the Institution's website or the Author's personal website, in each case provided that a link to the Article on the JoVE website is provided and notice of JoVE's copyright in the Article is included. All non-copyright intellectual property rights in and to the Article, such as patent rights, shall remain with the Author.

5. Grant of Rights in Video – Standard Access. This **Section 5** applies if the "Standard Access" box has been checked in **Item 1** above or if no box has been checked in **Item 1** above. In consideration of JoVE agreeing to produce, display or otherwise assist with the Video, the Author hereby acknowledges and agrees that, Subject to **Section 7** below, JoVE is and shall be the sole and exclusive owner of all rights of any nature, including, without limitation, all copyrights, in and to the Video. To the extent that, by law, the Author is deemed, now or at any time in the future, to have any rights of any nature in or to the Video, the Author hereby disclaims all such rights and transfers all such rights to JoVE.

6. Grant of Rights in Video – Open Access. This **Section 6** applies only if the "Open Access" box has been checked in **Item 1** above. In consideration of JoVE agreeing to produce, display or otherwise assist with the Video, the Author hereby grants to JoVE, subject to **Section 7** below, the exclusive, royalty-free, perpetual (for the full term of copyright in the Article, including any extensions thereto) license (a) to publish, reproduce, distribute, display and store the Video in all forms, formats and media whether now known or hereafter developed (including without limitation in print, digital and electronic form) throughout the world, (b) to translate the Video into other languages, create adaptations, summaries or extracts of the Video or other Derivative Works or Collective Works based on all or any portion of the Video and exercise all of the rights set forth in (a) above in such translations, adaptations, summaries, extracts, Derivative Works or Collective Works and (c) to license others to do any or all of the above. The foregoing rights may be exercised in all media and formats, whether now known or hereafter devised, and include the right to make such modifications as are technically necessary to exercise the rights in other media and formats. For any Video to which this Section 6 is applicable, JoVE and the Author hereby grant to the public all such rights in the Video as provided in, but subject to all limitations and requirements set forth in, the CRC License.

7. Government Employees. If the Author is a United States government employee and the Article was prepared in the course of his or her duties as a United States government employee, as indicated in **Item 2** above, and any of the licenses or grants granted by the Author hereunder exceed the scope of the 17 U.S.C. 403, then the rights granted hereunder shall be limited to the maximum rights permitted under such

statute. In such case, all provisions contained herein that are not in conflict with such statute shall remain in full force and effect, and all provisions contained herein that do so conflict shall be deemed to be amended so as to provide to JoVE the maximum rights permissible within such statute.

8. Likeness, Privacy, Personality. The Author hereby grants JoVE the right to use the Author's name, voice, likeness, picture, photograph, image, biography and performance in any way, commercial or otherwise, in connection with the Materials and the sale, promotion and distribution thereof. The Author hereby waives any and all rights he or she may have, relating to his or her appearance in the Video or otherwise relating to the Materials, under all applicable privacy, likeness, personality or similar laws.

9. Author Warranties. The Author represents and warrants that the Article is original, that it has not been published, that the copyright interest is owned by the Author (or, if more than one author is listed at the beginning of this Agreement, by such authors collectively) and has not been assigned, licensed, or otherwise transferred to any other party. The Author represents and warrants that the author(s) listed at the top of this Agreement are the only authors of the Materials. If more than one author is listed at the top of this Agreement and if any such author has not entered into a separate Article and Video License Agreement with JoVE relating to the Materials, the Author represents and warrants that the Author has been authorized by each of the other such authors to execute this Agreement on his or her behalf and to bind him or her with respect to the terms of this Agreement as if each of them had been a party hereto as an Author. The Author warrants that the use, reproduction, distribution, public or private performance or display, and/or modification of all or any portion of the Materials does not and will not violate, infringe and/or misappropriate the patent, trademark, intellectual property or other rights of any third party. The Author represents and warrants that it has and will continue to comply with all government, institutional and other regulations, including, without limitation all institutional, laboratory, hospital, ethical, human and animal treatment, privacy, and all other rules, regulations, laws, procedures or guidelines, applicable to the Materials, and that all research involving human and animal subjects has been approved by the Author's relevant institutional review board.

10. JoVE Discretion. If the Author requests the assistance of JoVE in producing the Video in the Author's facility, the Author shall ensure that the presence of JoVE employees, agents or independent contractors is in accordance with the relevant regulations of the Author's institution. If more than one author is listed at the beginning of this Agreement, JoVE may, in its sole discretion, elect not take any action with respect to the Article until such time as it has received complete, executed Article and Video License Agreements from each such author. JoVE reserves the right, in its absolute and sole discretion and without giving any reason therefore, to accept or decline any work submitted to JoVE. JoVE and its employees, agents and independent contractors shall have

## ARTICLE AND VIDEO LICENSE AGREEMENT

full, unfettered access to the facilities of the Author or of the Author's institution as necessary to make the Video, whether actually published or not. JoVE has sole discretion as to the method of making and publishing the Materials, including, without limitation, to all decisions regarding editing, lighting, filming, timing of publication, if any, length, quality, content and the like.

11. **Indemnification.** The Author agrees to indemnify JoVE and/or its successors and assigns from and against any and all claims, costs, and expenses, including attorney's fees, arising out of any breach of any warranty or other representations contained herein. The Author further agrees to indemnify and hold harmless JoVE from and against any and all claims, costs, and expenses, including attorney's fees, resulting from the breach by the Author of any representation or warranty contained herein or from allegations or instances of violation of intellectual property rights, damage to the Author's or the Author's institution's facilities, fraud, libel, defamation, research, equipment, experiments, property damage, personal injury, violations of institutional, laboratory, hospital, ethical, human and animal treatment, privacy or other rules, regulations, laws, procedures or guidelines, liabilities and other losses or damages related in any way to the submission of work to JoVE, making of videos by JoVE, or publication in JoVE or elsewhere by JoVE. The Author shall be responsible for, and shall hold JoVE harmless from, damages caused by lack of sterilization, lack of cleanliness or by contamination due to the making of a video by JoVE its employees, agents or independent contractors. All sterilization, cleanliness or decontamination procedures shall be solely the responsibility of the Author and shall be undertaken at the Author's

expense. All indemnifications provided herein shall include JoVE's attorney's fees and costs related to said losses or damages. Such indemnification and holding harmless shall include such losses or damages incurred by, or in connection with, acts or omissions of JoVE, its employees, agents or independent contractors.

12. **Fees.** To cover the cost incurred for publication, JoVE must receive payment before production and publication the Materials. Payment is due in 21 days of invoice. Should the Materials not be published due to an editorial or production decision, these funds will be returned to the Author. Withdrawal by the Author of any submitted Materials after final peer review approval will result in a US\$1,200 fee to cover pre-production expenses incurred by JoVE. If payment is not received by the completion of filming, production and publication of the Materials will be suspended until payment is received.

13. **Transfer, Governing Law.** This Agreement may be assigned by JoVE and shall inure to the benefits of any of JoVE's successors and assignees. This Agreement shall be governed and construed by the internal laws of the Commonwealth of Massachusetts without giving effect to any conflict of law provision thereunder. This Agreement may be executed in counterparts, each of which shall be deemed an original, but all of which together shall be deemed to be one and the same agreement. A signed copy of this Agreement delivered by facsimile, e-mail or other means of electronic transmission shall be deemed to have the same legal effect as delivery of an original signed copy of this Agreement.

A signed copy of this document must be sent with all new submissions. Only one Agreement required per submission.

### CORRESPONDING AUTHOR:

Name:	<input type="text"/>	
Department:	<input type="text"/>	
Institution:	<input type="text"/>	
Article Title:	<input type="text"/>	
Signature:	<input type="text"/>	Date: <input type="text"/>

Please submit a signed and dated copy of this license by one of the following three methods:

- 1) Upload a scanned copy of the document as a pdf on the JoVE submission site;
- 2) Fax the document to +1.866.381.2236;
- 3) Mail the document to JoVE / Attn: JoVE Editorial / 1 Alewife Center #200 / Cambridge, MA 02139

For questions, please email [submissions@jove.com](mailto:submissions@jove.com) or call +1.617.945.9051



## Response to Editorial Comments and Reviews

We are very grateful to the editor and reviewers for their comments and suggestions, and have incorporated all of the comments into the revision. Our responses are shown in italics.

### Editor

- Formatting: The numbering is not formatted correctly. At least one bold numbered heading is required, with all of the necessary steps listed as substeps of that heading (1.1, 1.2, etc.). If possible, please split the protocol into multiple sections, each with a bold heading.

*We have renumbered the protocol as suggested.*

- Grammar:

- Line 77 – “compensate important aspects” – missing “for”
- Line 79 – “adaptation adjust sensitivity”
- Line 98 – Please format the list of components in a grammatically correct way.
- 4, 4.1, Please use imperative tense or convert to a note.
- Line 159 – “To varying the observer, then”

*We have corrected each of these errors.*

- Visualization:

- Additional detail is required:

- 6.2 – How is this done? This step cannot be filmed if additional stepwise detail on how to quantify is not provided.

*We expanded this section to describe the actual analyses and experiments more clearly, and have added a figure to illustrate them.*

- What program is used? This should appear in the materials table. If this is performed in MatLab, the code used should be provided.

*The simulations were done with Visual Basic. We added this to the materials table.*

- Results:

- At least one figure or table should be provided demonstrating the quantification mentioned in 6.2.



*We added figure 5 to show the example of applications for the adapted images.*

-Please make sure we are able to publish all painting images. Only one figure legend lists a reference.

*All paintings are open source and this is now noted for each figure.*

•Discussion: Please be more specific about what steps in the protocol are critical – which actions need to be performed? Please also include citations when discussing alternative techniques in the significance section.

*We have expanded the paragraph to note the critical steps and decisions required for the simulations.*

•If your figures and tables are original and not published previously, please ignore this comment. For figures and tables that have been published before, please include phrases such as “Re-print with permission from (reference#)” or “Modified from..” etc. And please send a copy of the re-print permission for JoVE’s record keeping purposes.

*The painting images are open source and credited. The other figures are my originals.*

•JoVE reference format requires that the DOIs are included, when available, for all references listed in the article. This is helpful for readers to locate the included references and obtain more information. Please note that often DOIs are not listed with PubMed abstracts and as such, may not be properly included when citing directly from PubMed. In these cases, please manually include DOIs in reference information.

*DOI’s have been added to all references where available.*

•IMPORTANT: Please copy-edit the entire manuscript for any grammatical errors you may find. The text should be in American-English only. This editing should be performed by a native English speaker (or professional copyediting services) and is essential for clarity of the protocol and the manuscript. Please thoroughly review the language and grammar prior to resubmission. Your JoVE editor will not copy-edit your manuscript and any errors in your submitted revision may be present in the published version.

*Done*

•NOTE: Please include a line-by-line response letter to the editorial and reviewer comments along with the resubmission.

**Reviewers' comments:**

**Reviewer #1:**

*Manuscript Summary:*

The manuscript describes a novel technique to visualize the effects of visual adaptation. The technique rests on a firm foundation of recently published work of the highest quality from first author's laboratory. I found nothing to criticize and much to commend here!

*Major Concerns:*

N/A

*Minor Concerns:*

N/A

*Additional Comments to Authors:*

N/A

**Reviewer #2:**

*Manuscript Summary:*

The manuscript introduces a novel method to simulate human color adaptation with a simple model. The method may be particularly useful for studying the effects of very long-term visual adaptation that cannot be easily conducted in practice.

*Major Concerns:*

Although the work is important and the manuscript is generally well written, the authors are encouraged to introduce the model and algorithm in more detail.

*We have not expanded the details in keeping with the length limits required for the protocol*

*Minor Concerns:*

\*Are the title and abstract appropriate for this methods article?

Response: Because the theoretical model and protocol focus on the color adaptation in the article, the author may consider changing the title "visualizing visual adaptation" into "visualizing color adaptation".

*While we use color as an example, the method is gerarally applicable to all aspects of visual adaptation. We added a sentence to the abstract to emphasize this.*

\*Are there any other potential applications for the method/protocol the authors could discuss?

Response: The authors have discussed the significance of the method in 6 aspects.

\*Are all the materials and equipment needed listed in the table? (Please note that any basic materials or equipment that a lab who might use this protocol would already have do not need to be listed, e.g., pipettes.)

Response: Yes.

\*Do you think the steps listed in the procedure would lead to the described outcome?

Response: Yes.

\*Are the steps listed in the procedure clearly explained?

Response: To introduce the protocol more clearly, the authors are encouraged to embed the GUI pictures into the main text.

*We assume these GUIs are more appropriate to show as part of the protocol video.*

\*Are any important steps missing from the procedure?

Response: No.

\*Are appropriate controls suggested?

Response: Yes.

\*Are all the critical steps highlighted?

Response: Yes.

\*Is there any additional information that would be useful to include?

Response: No.

\*Are the anticipated results reasonable, and if so, are they useful to readers?

Response: Yes.

\*Are any important references missing and are the included references useful?

Response: No. And the included references are useful.

Other small mistakes:

Line 126: According to Manuscripts Instructions for Authors for JOVE, italicize all Latin words and nomenclature.

Line 251: Remove "~".

*Done*

*Additional Comments to Authors:*

N/A



[Click here to access/download](#)

**Supplemental code file (if applicable)**  
**Image\_Adapt.m**

