

Journal of Visualized Experiments

A Rapid *In Vivo* Bioassay for Developmentally Active Enhancers

--Manuscript Draft--

Manuscript Number:	JoVE53882R2
Full Title:	A Rapid <i>In Vivo</i> Bioassay for Developmentally Active Enhancers
Article Type:	Invited Methods Article - JoVE Produced Video
Keywords:	Bioassay Conserved noncoding DNA Regulatory activity Electroporation Chick Vertebrate Development Enhancers ChIP-seq Validation
Manuscript Classifications:	7.5.360.340.24.340.230: Genes, Developmental; 7.7.700.320: Growth and Development; 7.7.700.320.500: Morphogenesis; 7.7.700.320.500.325.180: Embryonic Development; 7.7.700.320.500.325.377.625: Musculoskeletal Development; 8.1.158.273.200: Developmental Biology; 8.1.158.273.343: Genetics; 8.1.158.273.343.350: Genomics; 8.1.158.273.343.350.42: Epigenomics
Corresponding Author:	Kerby C. Oberg, MD, PhD Loma Linda University School of Medicine Loma Linda, CA UNITED STATES
Corresponding Author Secondary Information:	
Corresponding Author E-Mail:	koberg@llu.edu
Corresponding Author's Institution:	Loma Linda University School of Medicine
Corresponding Author's Secondary Institution:	
First Author:	Charmaine U. Pira, B.S.
First Author Secondary Information:	
Other Authors:	Charmaine U. Pira, B.S. Shelley A. Caltharp, MD, PhD Endika Haro, PhD
Order of Authors Secondary Information:	
Abstract:	<p>A potential regulatory sequence (PRS) can be identified by several approaches including conservation analysis and transcription factor specific chromatin immunoprecipitation followed by next generation sequencing (TF ChIP-seq). TF ChIP-seq generates a large data set (TF-regulome) that includes PRSs and background interactions. These approaches require secondary low throughput validation in model systems that replicate the temporal and spatial specificity of the PRS.</p> <p>In this report, a protocol is described to rapidly validate activity of PRSs in their developmental context. Following selection of candidate PRSs, the associated sequences are isolated, cloned into a GFP reporter construct, and then transfected into chick embryos. For PRSs that are anticipated to be functional during early development, from gastrulation through early organogenesis, whole embryo electroporation (EP) is recommended. With this technique transfection, incubation and monitoring occurs ex ovo during early gastrulation. The entire embryo is transfected and as structures form, they can be monitored live for PRS activity. This ex ovo</p>

	<p>approach supports development up to early limb bud outgrowth.</p> <p>If the functional activity of a PRS is expected to be later in development or if the investigation is to ascertain its activity during the development of a specific organ, targeted regional electroporation (TREP) is used. This approach requires injection of construct DNA directly into the developing organ, precursor or adjacent cavity prior to electroporation. An approach to transfect the presumptive limb bud using TREP is also outlined and illustrated. TREP supports a rapid organ-specific validation of a PRS' activity. Both techniques can also be used to investigate regulatory domains by site directed mutagenesis of the PRS-reporter construct.</p> <p>The chick as a bioassay offers a rapid effective tool for PRS validation, functional domain determination, and further characterization of the regulatory events responsible for development.</p>
Author Comments:	Thanks for the opportunity. Maybe we will meet up at the next EB meeting. All the best, kerby
Additional Information:	
Question	Response
If this article needs to be "in-press" by a certain date to satisfy grant requirements, please indicate the date below and explain in your cover letter.	



Dr. Mary Struziak
 Editorial Assistant, Developmental Biology Section
 Journal of Visualized Experiments
 1 Alewife Center, Suite 200
 Cambridge, MA 02140

Dear Dr. Stuziak;

Thanks for the invitation to submit our protocol on validating enhancer elements via the chick bioassay approach. We are submitting our original protocol description in the manuscript entitled "A Rapid In Vivo Bioassay for Developmentally Active Enhancers" for consideration of publication in JoVE.

JoVE has published a number of protocols on *in ovo* electroporation, however, our approach assays potential regulatory sequences at various stages of development and includes a method to transfect solids organs and mesodermal tissues with technical tips to enhance targeted delivery. We believe our manuscript describing this approach to assay and validate potential regulatory sequences that function during development will be an important addition to the journals repertoire of protocols and useful for investigators using genomic tools to clarify developmental networks and pathways.

The following authors have participated in developing this protocol: **Charmaine Pira** has performed numerous experiments using this technique. **Charmaine Pira** and **Kerby Oberg** have refined and optimized the protocol. **Shelley Caltharp, Charmaine Pira** and **Kerby Oberg** originally conceived of the approach. Shelley Caltharp performed the conservation analysis on *RTN4/NOGO* locus and generated the associated reporter constructs. **Endika Haro** performed the Lmx1b ChIP-seq analysis. **Charmaine Pira, Endika Haro** and **Shelley Caltharp** generated the PRS and mPRS *ptk*-EGFP constructs.

Suggested reviewers listed below:

- 1) Marian Ros – Universidad de Cantabria – email: marian.ros@unican.es
- 2) Cathy Krull – University of Michigan – email: krullc@umich.edu
- 2) Susan Mackem – National Cancer Research Institute – email: mackemS@mail.nih.gov
- 4) Randy Johnson - UT MD Anderson Cancer center – email: rljohnson@mdanderson.org
- 5) John Fallon - University of Wisconsin – email: jffallon@wisc.edu
- 6) Marybeth Ezaki - University of Texas Southwestern – email: Marybeth.Ezaki@tsrh.org

All authors have reviewed the manuscript. We have prepared the protocol, list of reagents and equipment, and manuscript as instructed in the authors guide and look forward to your review and comments.

Sincerely,

Kerby C. Oberg, MD, PhD
 Professor
 Department of Pathology and Human Anatomy,
 Divisions of Human Anatomy and Pediatric Pathology

TITLE:

A Rapid *In Vivo* Bioassay for Developmentally Active Enhancers

AUTHORS:

Charmaine U. Pira

Department of Pathology and Human Anatomy

Loma Linda University

Loma Linda, CA, USA

cpira@llu.edu

Shelley A. Caltharp

Department of Pathology

Children's Healthcare of Atlanta

Atlanta, GA, USA

Shelley.Caltharp@choa.org

Endika Haro

Department of Pathology and Human Anatomy

Loma Linda University

Loma Linda, CA, USA

eharo@llu.edu

Kerby C. Oberg

Department of Pathology and Human Anatomy

Loma Linda University

Loma Linda, CA, USA

koberg@llu.edu

CORRESPONDING AUTHOR:

Kerby C. Oberg, MD, PhD

KEYWORDS:

Bioassay, Conserved noncoding DNA, regulatory activity, Electroporation, Chick, Vertebrate, Development, Enhancers

SHORT ABSTRACT:

With the increased use of transcription factor-specific ChIP-seq technology, techniques to validate potential regulatory regions are critical. The authors describe a rapid chick bioassay to validate the activity of regulatory sequences functioning during development.

LONG ABSTRACT:

A potential regulatory sequence (*PRS*) can be identified by several approaches including conservation analysis and transcription factor-specific chromatin immunoprecipitation followed by next generation sequencing (TF ChIP-seq). TF ChIP-seq generates a large data set (TF-

regulatome) that includes *PRS*s and background interactions. These approaches require secondary low throughput validation in model systems that replicate the temporal and spatial specificity of the *PRS*.

In this report, a protocol is described to rapidly validate activity of *PRS*s in their developmental context. Following selection of candidate *PRS*s, the associated sequences are isolated, cloned into a GFP reporter construct, and then transfected into chick embryos. For *PRS*s that are anticipated to be functional during early development, from gastrulation through early organogenesis, whole embryo electroporation (EP) is recommended. With this technique transfection, incubation and monitoring occurs *ex ovo* during early gastrulation. The entire embryo is transfected and as structures form, they can be monitored live for *PRS* activity. This *ex ovo* approach supports development up to early limb bud outgrowth.

If the functional activity of a *PRS* is expected to be later in development or if the investigation is to ascertain its activity during the development of a specific organ, targeted regional electroporation (TREP) is used. This approach requires injection of construct DNA directly into the developing organ, precursor or adjacent cavity prior to electroporation. An approach to transfect the presumptive limb bud using TREP is also outlined and illustrated. TREP supports a rapid organ-specific validation of a *PRS'* activity. Both techniques can also be used to investigate regulatory domains by site-directed mutagenesis of the *PRS*-reporter construct.

The chick as a bioassay offers a rapid effective tool for *PRS* validation, functional domain determination, and further characterization of the regulatory events responsible for development.

INTRODUCTION:

Evaluation of systems biology by big data sets (*i.e.*, genome-wide) offers new insights and tool sets for the curation of relevant regulatory molecules and pathways.^{1,2} Transcription factor-specific chromatin immunoprecipitation followed by next generation sequencing (TF ChIP-seq) generates a genome-wide data set (TF regulatome) of potential regulatory sequences. However, not all of the recovered sites are functionally relevant. The ability to discern signal from noise is a significant limitation of the “omic” data sets.³

With an increasing number of completed genomes available for comparison, one approach is to determine whether a potential regulatory sequence (*PRS*) is conserved across species and thereby implicate functional relevance. This approach can accelerate discovery in a variety of disciplines, but is particularly helpful in developmental biology where establishing the basic body plan in vertebrate development is controlled by conserved gene sets.⁴ Furthermore, associated regulatory elements are also typically conserved and clustered within introns or associated gene deserts.⁵⁻⁷ Comparison of the *PRS* with enhancer-associated marks, such as p300 or H327Ac, are additional tools for the prediction of enhancer activity.^{8,9} Although these added screening techniques increase the likelihood that *PRS*s are functionally relevant, confirmation is still required.

Timmer and coworkers first reported the use of *in ovo* electroporation as a rapid bioassay for demonstrating enhancer-promoter activity.¹⁰ They injected -*PRS* linked to reporters into chick neural tubes at Hamburger and Hamilton¹¹ stage (HH) 15-17 using various enhancer-promoter combinations and then followed for enhancer activity. Uchikawa generated an inducible reporter construct with a basal herpes simplex thymidine kinase promoter linked to an enhanced GFP reporter (*ptk*-EGFP).¹² The basal level of activity of this promoter is very low in most tissues allowing for faithful enhancer driven localization of activity. Uchikawa also extended developmental reporting to other tissue involved in early development using a whole embryo electroporation technique at HH 4.¹³ Oberg, Pira and colleagues further extended the capacity of *in ovo* electroporation to other tissues at later stages of development.^{14,15} Thus, the capacity to evaluate enhancer activity in various tissues through a range of developmental stages has been demonstrated.

In this report, the chick as a bioassay is used at multiple stages and sites to determine the activity of *PRS*s during development. This technique can be used to validate an isolated *PRS* as the target of a hypothesis driven question or to validate several candidates from a large data set before further analysis.

PROTOCOL:

The protocol described below was performed in accordance with Loma Linda University's policy on research involving animals and followed the recommendations within the Federation of Animal Science Societies' (FASS) Guide for the Care and Use of Agricultural Animals in Research and Teaching, 3rd ed. and the National Research Council's Guide for the Care and Use of Laboratory Animals. It is important to check with the local institution regarding their requirements for vertebrate animal use approval when using chick embryos since they are not considered as a vertebrate animal within the FASS guide; however, recommendations for appropriate avian embryo euthanasia are described and adhered to in this lab.

1) Construction of the Reporter Vector

1.1) Design primers to the potential regulatory sequence (*PRS*) to contain the restriction endonuclease sequence recognition site for XhoI (CTCGAG) and KpnI (GGTACC).¹⁶

1.2) Amplify the region by performing polymerase chain reaction (PCR) using genomic DNA template as previously reported.^{17,18}

1.3) Clone the PCR product into the *ptk*-EGFP expression vector.¹⁹

1.3.1) Use the empty *ptk*-EGFP expression vector as a negative control to indicate the basal level of expression within a given tissue. Use the β -actin-driven RFP reporter plasmid as a positive control and an indicator of transfection efficiency.

2) Whole Embryo Electroporation

2.1. Preparations

2.1.1) Prepare filter paper supports. Punch 4 holes in a cloverleaf pattern onto a 2.2 cm x 2.2 cm filter paper using a standard hole punch. Sterilize by autoclaving.

2.1.2) Prepare the albumin-agar culture dish.

2.1.2.1) Dissolve 0.18 g of agar in 30 mL 0.9% sodium chloride on a hotplate, with stirring. Cool in a 42 °C water bath.

2.1.2.2) Extract the thin albumin by first cracking the narrow end of an unincubated egg and removing the eggshell. Pour out the thick albumin and transfer the thin albumin into a sterile 50 mL conical tube using a large bore plastic transfer pipet. Use enough eggs to get 30 mL of thin albumin (~4 eggs). Add 150 µL of 10,000 U/mL penicillin-streptomycin and warm the albumin in a 42 °C water bath.

2.1.2.3 Combine the albumin and agar and mix by swirling. Transfer 2 mL aliquots to a 35 mm Petri dish, gently swirling the dish to ensure even coverage. Allow the agar to set at room temperature for at least 10 min. Store at 4 °C.

2.1.3) Prepare the cloned *PRS* vector cocktail: 1 µg/µL of *PRS* plasmid, 0.3 µg/µL of reporter plasmid, and 0.025% Fast Green FCF stain.

2.2) Protocol for *in vitro* culturing of Hamburger-Hamilton stage (HH) 4 chick embryos

2.2.1) Incubate fertilized White Leghorn eggs at 39° C for 18-19 hr, according to Hamburger-Hamilton chick staging¹¹.

2.2.2) Spray the surface of the egg with a light mist of 70% ethanol and air-dry.

2.2.3) Crack the egg and empty its content into a 15 cm Petri dish. Carefully remove the thick albumin on the yolk using the blunt end of forceps.

2.2.3.1) If the embryo is on the side of the yolk, roll the yolk around with the blunt end of forceps until the embryo is in the middle of the yolk.

2.2.4) Place the filter paper on the yolk, with the embryo centered. Cut the vitelline membrane at the edges of the filter paper. Lift the filter paper from the yolk.

Note: It is important that the vertical orientation of the primitive streak is maintained so that the embryo does not tear.

2.2.5) Place the filter paper on the albumin-agar plate with the hypoblast (yolk side) up.

Carefully remove excess yolk with the blunt end of forceps. Gently rinse the embryo with warmed Hank's Balanced Salt Solution (HBSS).

2.3) Electroporation Protocol

2.3.1) Position the electrodes and pulled glass capillary needle attached to a syringe under a dissecting microscope. Set the 3 mm round platinum cathode at the base of a ~2 mm deep chamber under the embryo suspension silicone platform. Mount the 2 mm round platinum anode in a micromanipulator and suspend above the silicone platform. The syringe contains mineral oil as the hydraulic fluid.

2.3.2) Add 100-200 μ L HBSS into the cathode cavity of the silicone platform. Place the filter paper supporting embryo on the platform with the hypoblast (yolk side) up.

2.3.3) Inject 1 μ L *PRS* vector cocktail between the blastoderm and the vitelline membrane using a pulled glass capillary needle. Follow with a small amount of mineral oil to seal the injection point.

2.3.4) Position the anode about 2 mm above the embryo. Drop ~100 μ L of HBSS directly over the electrode and embryo. Electroporate with 5 pulses of 5V for 50 msec at intervals of 100 msec.

CAUTION: The electroporator can produce high levels of voltage and current. Observe basic lab safety and common sense to prevent injury. This includes not touching the exposed electrodes with bare hands or materials that can conduct electricity while the electroporator is on. Refer to the equipment manual for other safety precautions and potential hazards.

2.3.5) Return the embryo to the agar-albumin plate, with hypoblast up, and incubate in a humidified chamber.

2.3.6) Clean the cathode after each electroporation by aspirating any remaining liquid and yolk. Clean the anode by wiping with a lab tissue.

3) Targeted Regional Electroporation: Neural Tube of HH10 Chicken Embryo

3.1) Protocol for windowing the egg and staining the embryo

3.1.1) Incubate fertilized White Leghorn eggs at 39 °C for 33-38 hr, according to Hamburger-Hamilton chick staging¹¹.

3.1.2) Spray a light mist of 70% ethanol onto the eggs and air-dry.

3.1.3) Place the egg on its side on an egg holder. Using a dissecting probe, poke a small hole at the blunt end of the egg. Insert a syringe with an 18 gauge needle through this hole at a

downward angle and withdraw 1-2 mL of albumin, taking care not to remove any yolk.

3.1.4) Without breaking the underlying shell membrane, poke a shallow hole on the top side of the egg. Carefully remove small portions of the eggshell with the dissecting probe, until ~0.5 cm diameter of the underlying membrane is exposed. Break the shell membrane by pushing down on it with the dissecting probe.

3.1.5) Cover the hole with a strip of tape and cut the hole bigger, to ~2 cm diameter, using small scissors.

3.1.6) Under a dissecting microscope, identify the blood island surrounding the embryo and add 6 μ L of neutral red solution to the middle of this blood island. Wait 2-3 min.

3.1.7) Carefully remove the vitelline membrane overlying the embryo using a tungsten needle.

3.2) Electroporation Protocol

3.2.1) Align the two electrodes in parallel with a fixed inter-electrode distance of 4 mm and mount on a micromanipulator. Position the electrodes on the yolk membrane so that the embryo is centered between the electrodes.

3.2.2) Inject ~0.1 μ L PRS vector cocktail into the neural tube lumen of the embryo. Add 1-2 drops of 1X phosphate buffered saline (PBS) using a transfer pipet. Reposition the electrodes so that they touch the yolk membrane, if necessary.

3.2.3) Apply 5 pulses of 20 V each lasting 50 msec at 950 msec intervals. Add 1 drop of 1X PBS and remove electrodes.

3.2.4) Seal the egg with a piece of transparent tape and return to the egg incubator.

3.2.5) Clean electrodes after each electroporation in bleach, RNase-free water, and 1X PBS to remove residual yolk.

4) Targeted Regional Electroporation: Lateral Plate Mesoderm of HH14 Chicken Embryos

4.1) Electroporation Protocol

4.1.1) Incubate fertilized White Leghorn eggs at 39° C for 50-53 hr, according to Hamburger-Hamilton chick staging¹¹.

4.1.2) Open and stage the embryos as described above in **Steps 3.1.2 to 3.1.7**

4.1.3) Using a tungsten needle, make a slit onto the yolk membrane outside the periphery of the blood vessel at the tail end of the embryo.

4.1.4) Slide the cathode rod into the yolk through this slit. Position the cathode parallel to and along the length of the embryo. Do not place the cathode directly under the lateral plate mesoderm.

4.1.5) Inject ~0.2 μ L *PRS* vector cocktail into the intraembryonic coelom at the level of somite 18, followed by a small amount of mineral oil. The DNA will travel anteriorly and posteriorly along the coelom.

4.1.6) Position the cathode directly under the lateral plate mesoderm, spanning somites 15-20. Position the anode above the lateral plate mesoderm with an inter-electrode distance of ~2.5 mm. Add 3-5 drops of 1X PBS so as to submerge the anode. Adjust the electrodes so that they are not touching the embryo.

4.1.7) Apply 3 pulses of 8 V, 60 msec in duration at 50 msec intervals. Remove cathode from the yolk through the slit.

4.1.8) Add 40 μ L 2,500 U/mL of penicillin/ streptomycin. Seal the egg with transparent tape and return to the egg incubator.

4.1.9) Clean electrodes after each electroporation in bleach, RNase-free water, and 1X PBS to remove residual yolk.

5) Fluorescence analysis

5.1) Whole embryo electroporation

5.1.1) Using forceps, lift the filter paper from the plate and replace the embryo onto the same plate with the hypoblast down. Position the embryo away from residual yolk and cloudy portions of the agar-albumin plate. Alternatively, place the embryo in a new plate for imaging.

5.1.2) Examine the embryos with a fluorescence microscope to visualize transfection efficiency and *PRS* activity 6-48 hr after transfection. To optimize fluorescence intensity, visualize the embryos under high magnification.

5.2) Targeted regional electroporation (TREP).

5.2.1) Carefully dissect the embryo from the egg by cutting the yolk membrane around the embryo with microscissors and transfer to a 35 mm dish containing 1X PBS.

5.2.2) Under a dissecting microscope, remove the extraembryonic membrane with microscissors and forceps.

5.2.2.1) Keep the microscissors flat and parallel to the embryo to prevent accidentally cutting

the embryo. Do not pull or tear the membranes with forceps as you might also tear the embryo.

5.2.3) Visualize the embryo in a new 35 mm dish with 1X PBS under bright field and fluorescence microscopy. Use high magnification (40x) to optimize fluorescence intensity.

5.2.3.1) At high magnification, stitch the images together using an image-editing software to generate the complete image of the targeted tissue.

REPRESENTATIVE RESULTS:

The *ptk*-EGFP vector provides an inducible reporter with low levels of background activity in the developing chick embryo. The vector links the Herpes Simplex virus minimal thymidine kinase promoter (*ptk*) to an enhanced green fluorescent protein (EGFP) reporter (Figure 1A). The potential regulatory sequence is cloned into the multiple cloning site (MCS) upstream of the promoter. The construct is then transfected into the chick embryo by electroporation. Transfection efficiency is determined by co-electroporation with a β -actin promoter-driven RFP reporter plasmid (Figure 2D). RFP can be detected within 6 hr of transfection indicating the lag time needed before enhancer activity can be assayed with certainty. When assaying for activity during early development, whole embryo electroporation *ex ovo* at HH 4 during gastrulation is used (Figure 1B). Activity can then be localized and followed through gastrulation and basic body plan formation, up until about stage HH 16 or 17 just prior to wing outgrowth.

Whole embryo electroporation was used to assay potential regulatory sequences (*PRS*) associated with the *RTN4/NOGO* gene. A *PRS* 88.5 kb upstream of *RTN4/NOGO* demonstrated enhancer activity in the neural tube (Figure 2). The product of *RTN4/NOGO*, NOGO-A, is associated with neurite outgrowth inhibition. *NOGO-A* is also expressed within the neural tube coincident with the activity of the *PRS*. To assay the activity of this NOGO-A associated enhancer element (*NAEE*) at later stages of development, targeted regional electroporation (TREP) was used to transfect the neural tube at HH 10 (Figure 1C). TREP demonstrated that *NAEE* activity became restricted to the cranial spinal cord by HH18 (Figure 2N).

There are three predicted binding sites within this short 125 bp, enhancer; POU1F1, HNF3B, and SOX. Site-directed mutagenesis of the SOX binding site silenced enhancer activity suggesting that a SOX transcription factor is required for enhancer activity (Figure 2 I & J). The ZPA regulatory sequence (ZRS) has been described as the most distant regulatory enhancer located 1Mb upstream of *Sonic hedgehog* (*Shh*).²⁰ Thus, of the genes within the vicinity (~1 Mb) of the *NAEE*, only *RTN4/NOGO* is expressed within the neural tube. Thus, *RTN4/NOGO* is the most likely target of *NAEE* regulation.

In addition, transcription factor-targeted ChIP-seq data (reported as genomic intervals or peaks) are considered potential regulatory sequences. Genomic-wide sites of *Lmx1b* binding within the developing murine limb bud were analyzed at embryonic day 12.5 (e12.5). The genomic intervals were screened for conservation and a *PRS* 60 kb upstream of *Lmx1b* itself was identified (Figure 3A). To validate that this *PRS* could function as an enhancer during limb

development, a *ptk*-EGFP reporter construct was transfected into the presumptive chick limb using TREP (Figure 1D). After 48 hr of incubation, the emerging limb bud (HH 24; developmentally similar to e12.5) demonstrated enhancer activity restricted to the dorsal limb mesoderm corresponding to the expression domain of *Lmx1b* (Figure 3D & E). Enhancer activity was abolished by mutation of the predicted *Lmx1b* binding site, implying a requirement for *Lmx1b* binding for enhancer activity (Figure 3H).

Figure 1: Reporter Construct and Electroporation Setup

A) The *ptk*-EGFP vector illustrating the multiple cloning site (MCS), the thymidine kinase promoter (*ptk*) linked to the enhanced green fluorescent protein (EGFP) reporter. Potential regulatory sequences (*PRS*) are cloned into the MCS just upstream of the minimal promoter. The *PRS-ptk*-EGFP can then be transfected into chick embryos and assayed for activity using one of the following three approaches. B) Whole embryo electroporation. A Hamburger-Hamilton stage (HH) 4 embryo is mounted on a filter paper support and placed hypoblast up on a silicone platform encasing the cathode (-). The DNA is injected into the space between the vitelline membrane and the epiblast and the anode (+) is suspended above the embryo (PP=primitive pit, PS=primitive streak). C) Targeted regional electroporation of the neural tube. DNA is injected into the lumen of the neural tube of HH 10 chicken embryo. Paired parallel electrodes (+, -) are placed flanking the embryo. D) Targeted regional electroporation of the lateral plate mesoderm of HH 14 chicken embryos. DNA (*PRS-ptk*-EGFP) is injected into the intraembryonic coelom underlying the lateral plate mesoderm between somite levels 15 and 20 (black squares). The cathode (-) is placed underneath the embryo and the anode (+) is placed above the embryo, as shown in the transverse section at the level indicated in D with a black line (inset) (Cathode – colored black, Anode – colored red, Injected DNA – colored green)

Figure 2: Activity of the *NOGO-A*-Associated Enhancer Element (*NAEE*) During Development.

A) Schematic of the potential regulatory sequence upstream of the *RTN4/NOGO* gene that encodes for *NOGO-A* and its reporter construct. *ptk* – basal thymidine kinase promoter B) *in situ* hybridization (ISH) for *NOGO-A* mRNA at HH 10. C) Bright-field light of a HH 10 embryo transfected with the *NAEE-ptk*-EGFP reporter. D) Co-transfection of the embryo with an RFP reporter plasmid demonstrates transfection efficiency. E) Activity of the *NAEE* sequence within the neural tube (NT). F) Boxed region from “E” magnified. *NAEE* activity (E) co-localizes with *NOGO-A* expression (B). G) Bright-field of a similarly staged embryo assaying *NAEE* activity with the *SOX* binding site mutated (*mSOX NAEE*) showing loss of activity (I). J) Boxed region in I magnified. H) RFP is diffuse indicating good transfection. K) *NOGO-A* expression in a later stage (HH 18) embryo. L) Bright-field of the HH 18 embryo. N) Enhancer activity is accentuated in the spinal cord whereas RFP is detected throughout the neural tube (M). Scale bars in C, G and L are 1 mm.

Figure 3: Validation of an *Lmx1b*-Associated Regulatory Element (*LARE*) Identified by ChIP.

A) Schematic of the conserved sequence found by *Lmx1b*-specific ChIP-seq and its reporter construct (*ptk* – basal thymidine kinase promoter). At HH 24 (48 hr after transfection of the presumptive limb mesoderm), the limb is examined. B) Morphology of the HH 24 limb bud with bright-field light (scale bar = 500 μ m). C) Distribution and transfection efficiency is

demonstrated by an RFP reporter plasmid. D) Activity of the conserved ChIP-identified genomic interval is evident and localized to dorsal mesoderm corresponding to the expression domain of *Lmx1b* (E, *in situ* hybridization to *Lmx1b* mRNA). F) Bright-field of an HH 24 limb transfected with the *LARE* containing a mutated *Lmx1b* binding site (*mLARE*; scale bar = 500 μ m). G) Diffuse distribution of RFP indicating transfection efficiency. H) Loss of activity when the *Lmx1b* binding site is mutated.

DISCUSSION:

This report describes a bioassay to validate potential regulatory sequences active during development. The approach incorporates the use of a reporter construct, transfection via electroporation and chicken embryos. The process, from sequence determination to validation of activity, can typically be completed within two to four weeks. A critical aspect of this protocol is the efficient transfection of construct into the target tissue. Several steps ensure efficient transfection. The use of endotoxin-free plasmids minimizes post-operative deformation and embryonic death. Cleaning electrodes well after each EP optimizes and standardizes transfection. The voltage and pulses of the electroporator may also need to be adjusted to optimize transfection yet minimize EP related tissue damage. These parameters, once established should be consistently used. For whole embryo EP, removing as much of the yolk from the embryo and filter paper as possible optimizes current flow and keeps the embryo from sagging or tearing from the filter paper. Removing the yolk also makes it easier to visualize the embryo and *PRS* activity during evaluation.

For targeted regional electroporation (TREP), injection of DNA into a cavity is ideal, since the cavity can retain the concentrated DNA during the time between injection and electroporation. Every attempt should be made to keep this interval short irrespective of the target, but a restricted space is helpful. When an associated cavity or restricted space is not available, a cavity or bubble within the target tissue should be created. For example, Oberg and co-workers created a cavity within limb bud mesoderm by injecting a bolus of DNA followed by a bubble of mineral oil.¹⁴ Retention of DNA by this approach promoted efficient transfection of limb bud mesoderm. If direct tissue contact by the electrodes is necessary to direct current to the target tissue, insulate the electrodes as described by Oberg and co-workers to minimize short circuits that can reduce transfection efficiency.¹⁴ Be aware that direct contact will also cause some local tissue damage. If TREP of an organ has yet to be described, the approach should be optimized first with the RFP construct to ensure effective transfection of the targeted tissue with minimal tissue damage. The major limitation of this approach is the transfection of organs that form in more advanced stages of development or are physically difficult to target within the embryo such as the metanephric kidney.

A number of *in vitro* and *in vivo* approaches have been used to validate potential regulatory sequences. Validation of an enhancer element can be accomplished in a relevant *in vitro* cell line.²¹ Although this approach can be useful, cell lines are immortal and out of context from their original derivation and thus, may not represent *in vivo* activity. Even primary cells grown in culture are out of context to their *in situ* relationships and rapidly lose some of their differentiated features.^{22,23} For a transcription factor that has precise spatial and temporal

expression during development, context is critical for functional validation. Analysis of enhancer activity in transgenic mice follows a protocol similar to what is described in this report with generation of a reporter construct, typically using the LacZ reporter, although GFP has also been described.^{24,25} The mouse transgenic approach requires the injection of the construct into mouse embryonic stem cells, typically injecting 100-300 cells for recovery 3-5 embryos, 3-7 week after construct generation, and costs of around \$2500 per construct. Furthermore, since evaluation occurs post-harvesting only one developmental stage can be examined per embryo. Thus, using the mouse transgenic approach to evaluate developmentally active vertebrate enhancers is limited by embryonic stage, cost, time and efficiency. The zebrafish model is a more assessable and accessible model for enhancer activity but is also a vertebrate model that is more divergent from human than either mouse or chicken.⁷ Thus, for the analysis of limb development related enhancers, the chick or mouse models would be more informative. The zebrafish model also requires establishing a fish facility to breed and maintain a colony, which is not a trivial undertaking.

The chick is a common well-studied vertebrate developmental model for several major organ systems including brain, heart and limbs. Fertile eggs are readily available and require only an avian incubator for development. Similar to the zebrafish model, assessment of enhancer activity in chick embryos is rapid, within 6 hours after transfection, and as in zebrafish, enhancer activity can be followed through multiple stages of development. The most expensive item required to setup up a chick bioassay system for enhancer activity in most labs is the electroporation unit that is presently around \$14k, which can be used for hundreds of transfections and bioassays of potential regulatory sequences. Considering the cost of mouse transgenics or establishing a fish facility, the chick bioassay is quite cost effective. Overall, the chick bioassay as described provides a rapid system for validating enhancers active during vertebrate development. The approach can be used to supplement high throughput techniques to confirm functional relevance of data sets. Alternatively, this approach can be used to validate targets extracted from genomic data sets that are to be used in hypothesis-driven, mechanistic investigations.

ACKNOWLEDGEMENTS:

The authors would like to thank the members of the Soriano lab for critical review of this technique. The authors would also like to thank Dr. Uchikawa for the kind gift of the *ptk*-EGFP plasmid. Funded in part by grants from the LLU Pathology Research Endowment, National Organization of Rare Diseases, and from the NICHD (HD39421).

DISCLOSURES:

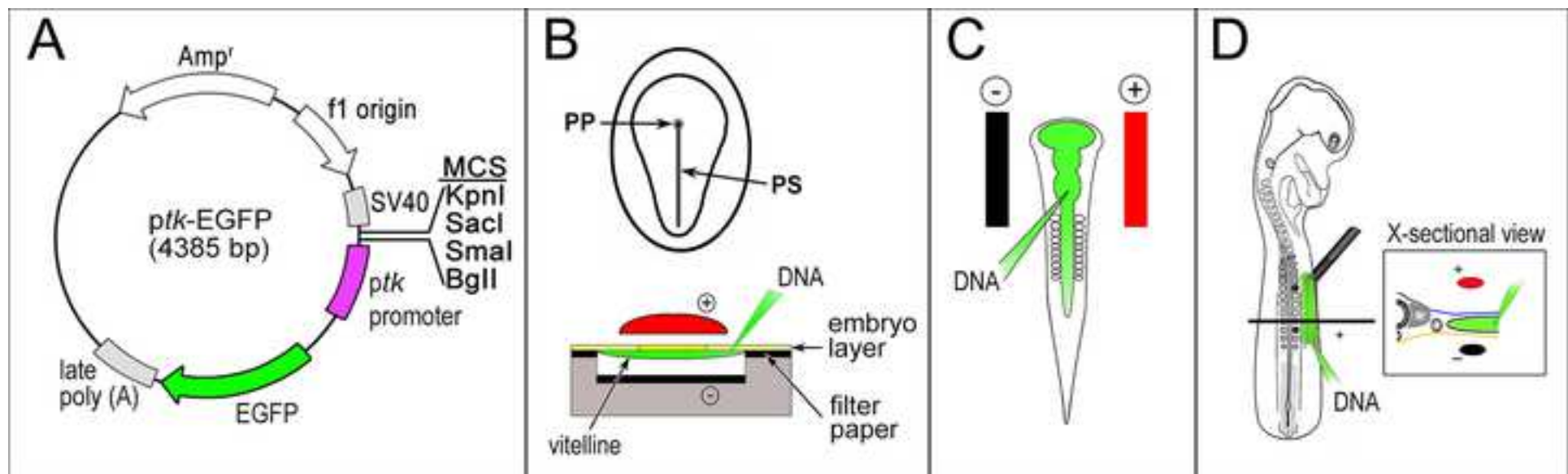
The authors have nothing to disclose.

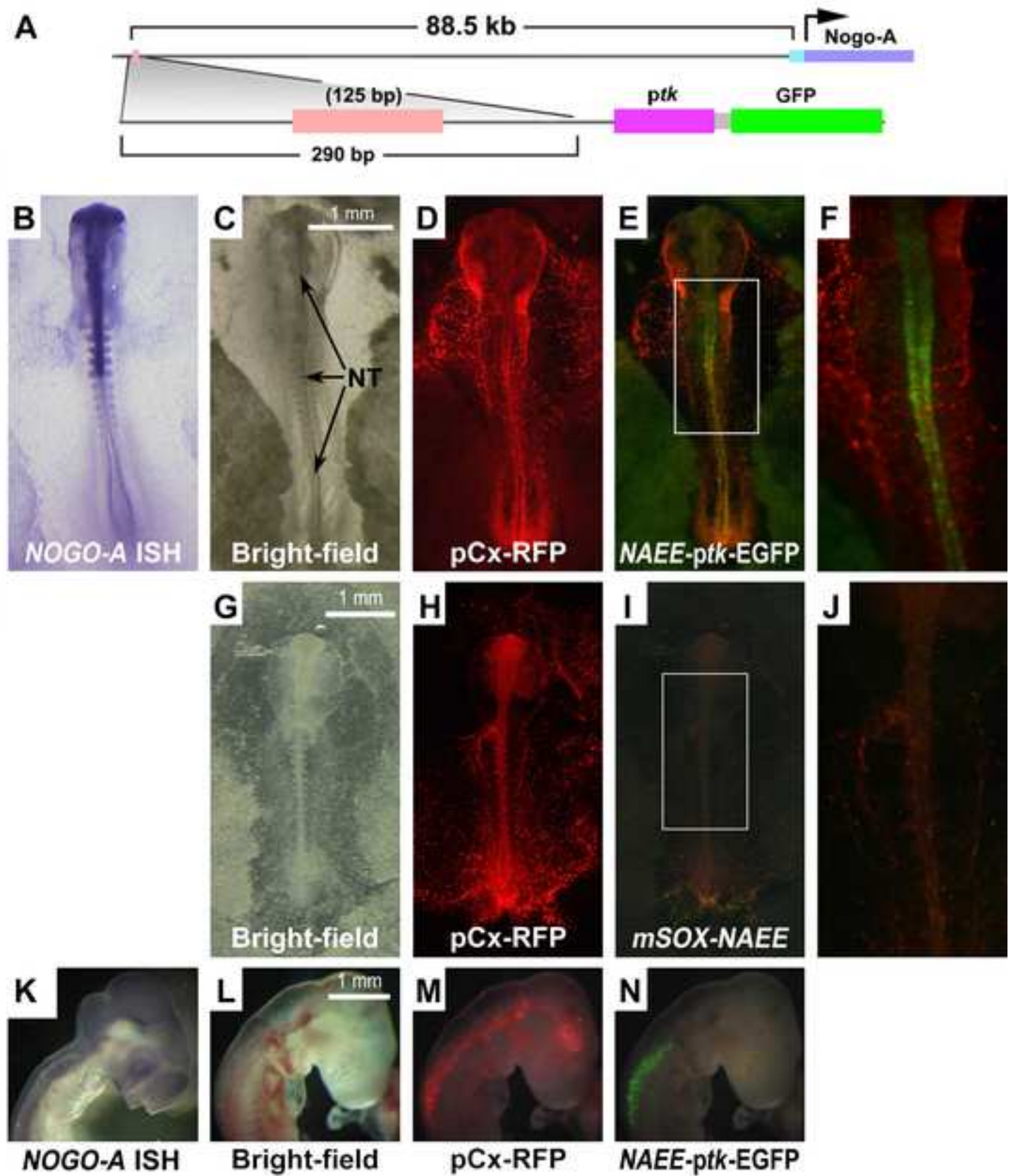
REFERENCES:

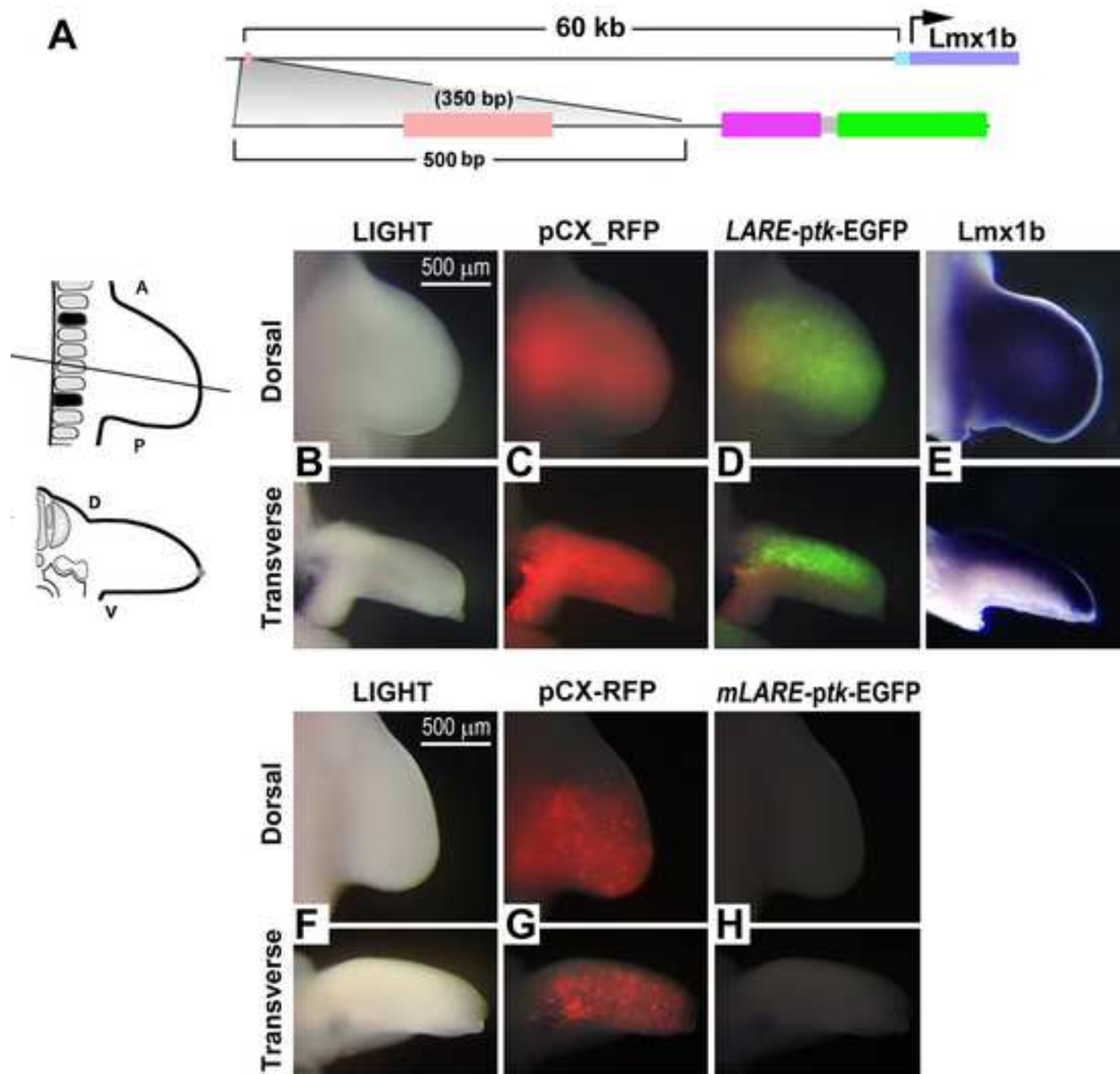
- 1 Li, Y. & Chen, L. Big biological data: challenges and opportunities. *GPB* **12**, 187-189, doi:10.1016/j.gpb.2014.10.001 (2014).
- 2 Howe, D. *et al.* Big data: The future of biocuration. *Nature* **455**, 47-50, doi:10.1038/455047a (2008).

- 3 Khoury, M. J. in *Genomics and Health Impact Blog* Vol. 2014 CDC (ed M.J. Khoury) (CDC, <http://blogs.cdc.gov/genomics/2014/10/30/public-health-approach/>, 2014).
- 4 Irie, N. & Sehara-Fujisawa, A. The vertebrate phylotypic stage and an early bilaterian-related stage in mouse embryogenesis defined by genomic information. *BMC Biol* **5**, 1, doi:10.1186/1741-7007-5-1 (2007).
- 5 Boffelli, D., Nobrega, M. A. & Rubin, E. M. Comparative genomics at the vertebrate extremes. *Nat Rev Genet* **5**, 456-465, doi:10.1038/nrg1350 (2004).
- 6 Noonan, J. P. & McCallion, A. S. Genomics of long-range regulatory elements. *Annu Rev Genomics Hum Genet* **11**, 1-23, doi:10.1146/annurev-genom-082509-141651 (2010).
- 7 Woolfe, A. *et al.* Highly conserved non-coding sequences are associated with vertebrate development. *PLoS.Biol.* **3**, e7, doi:10.1371/journal.pbio.0030007 (2005).
- 8 Visel, A. *et al.* ChIP-seq accurately predicts tissue-specific activity of enhancers. *Nature*. **457**, 854-858, doi:10.1038/nature07730 (2009).
- 9 Cotney, J. *et al.* Chromatin state signatures associated with tissue-specific gene expression and enhancer activity in the embryonic limb. *Genome Res* **22**, 1069-1080, doi:10.1101/gr.129817.111 (2012).
- 10 Timmer, J., Johnson, J. & Niswander, L. The use of in ovo electroporation for the rapid analysis of neural-specific murine enhancers. *Genesis* **29**, 123-132, doi:DOI: 10.1002/gene.1015 (2001).
- 11 Hamburger, V. & Hamilton, H. L. A series of normal stages in the development of the chick embryo. *J Morphol.* **88**, 49-92, doi:10.1002/jmor.1050880104 (1951).
- 12 Uchikawa, M. Enhancer analysis by chicken embryo electroporation with aid of genome comparison. *Dev Growth Differ* **50**, 467-474, doi:10.1111/j.1440-169X.2008.01028.x (2008).
- 13 Uchikawa, M., Takemoto, T., Kamachi, Y. & Kondoh, H. Efficient identification of regulatory sequences in the chicken genome by a powerful combination of embryo electroporation and genome comparison. *Mech.Dev.* **121**, 1145-1158, doi:10.1016/j.mod.2004.05.009 (2004).
- 14 Oberg, K. C. *et al.* Efficient ectopic gene expression targeting chick mesoderm. *Dev.Dyn.* **224**, 291-302, doi:10.1002/dvdy.10104 (2002).
- 15 Pira, C. U. *et al.* in *15th Proc Intl Symp on Biolum Chemilum* Vol. 15th Proc Intl Symp on Biolum Chemilum (eds L.J. Kricka & P.E. Stanley) 319-323 (Wiley, Shanghai, China, 2008).
- 16 Ye, J. *et al.* Primer-BLAST: a tool to design target-specific primers for polymerase chain reaction. *BMC Bioinformatics* **13**, 134, doi:10.1186/1471-2105-13-134 (2012).
- 17 Frey, B. Amplification of genomic DNA by PCR. *Methods Mol Med* **13**, 143-156, doi:10.1385/0-89603-485-2:143 (1998).
- 18 Lorenz, T. C. Polymerase chain reaction: basic protocol plus troubleshooting and optimization strategies. *J Vis Exp*, e3998, doi:10.3791/3998 (2012).
- 19 Uchikawa, M., Ishida, Y., Takemoto, T., Kamachi, Y. & Kondoh, H. Functional analysis of chicken Sox2 enhancers highlights an array of diverse regulatory elements that are conserved in mammals. *Dev.Cell.* **4**, 509-519, doi:doi:10.1016/S1534-5807(03)00088-1 (2003).
- 20 Lettice, L. A. *et al.* A long-range Shh enhancer regulates expression in the developing limb and fin and is associated with preaxial polydactyly. *Hum Mol Genet.* **12**, 1725-1735 (2003).

- 21 Smith, A. M. *et al.* Integration of Elf-4 into stem/progenitor and erythroid regulatory networks through locus-wide chromatin studies coupled with in vivo functional validation. *Mol Cell Biol* **32**, 763-773, doi:10.1128/mcb.05745-11 (2012).
- 22 Carlson, B. M. The preservation of the ability of cultured quail wing bud mesoderm to elicit a position-related differentiative response. *Dev Biol* **101**, 106-115, doi:10.1016/0012-1606(84)90121-0 (1984).
- 23 Hayamizu, T. F. & Bryant, S. V. Retinoic acid respecifies limb bud cells in vitro. *J Exp Zool* **263**, 423-429, doi:10.1002/jez.1402630410 (1992).
- 24 Suda, Y. *et al.* The same enhancer regulates the earliest Emx2 expression in caudal forebrain primordium, subsequent expression in dorsal telencephalon and later expression in the cortical ventricular zone. *Development* **137**, 2939-2949, doi:10.1242/dev.048843 (2010).
- 25 Ros, M. A. *et al.* The chick oligozeugodactyly (ozd) mutant lacks sonic hedgehog function in the limb. *Development* **130**, 527-537, doi:10.1242/dev.00245 (2003).







Name of Material/ Equipment	Company	Catalog Number	Comments/Description
Bacto-Agar	BD Biosciences	204010	
Sodium chloride	Sigma	S9888	
Hank's Balanced Salt Solution (HBSS)	Sigma	H6136	Hank's Balanced Salt Solution (HBSS),
Penicillin-streptomycin	Life Technologies	15140-122	
Ethanol 200 proof			dilute to 70%
Endofree Maxiprep Plasmid Kit	Qiagen	12362	EndoFree Plasmid Maxi Kit
White Leghorn fertilized eggs	Chino Valley Ranchers		
Whatman Grade 4 filter paper	GE Healthcare Life Sciences	1004-240	filter paper support (a range of grade
50ml conical tube	VWR	21008-242	
35mm petri dish	VWR	627161	Sterile Petri Dishes, 35W x 10H mm
15cm petri dish	VWR	82050-600	Sterile Petri Dishes, 145W x 20H mm
Transfer pipet	VWR	414004-042	
Capillary tube	World Precision Instruments	1B100F-6	
Terasaki dish	VWR	82050-706	dish from which to aspirate DNA
mineral oil			
Standard hole punch			
Hotplate stirrer			
Stir bar			
Water bath			
Round Platinum 3mm Petri dish			
electrode	Protech International Inc	CUY700-P3E	electrode for whole embryo electroporation
Round Platinum 2mm cover electrode	Protech International Inc	CUY700-P2L	electrode for whole embryo electroporation
Humidified chamber			
Dissecting microscope			
Dissecting fluorescence microscope			
Forceps			
Standard surgical scissors			
CUY21-EDIT Square Wave			
Electroporator	Protech International	CUY21-EDIT	electroporator

Micropipette	Hamilton Company		
Micromanipulator			
Egg holder (nest)			modeling clay shaped on a 10cm pet
Dissecting probe			to window the egg
Parallel Fixed Needle Electrode	Protech International Inc	CUY610-P4.4	4mm Gap & Platinum 4mm Tip, elect
Tungsten wire	Omega Engineering, Inc	W5W26-010	Tungsten 5% Re vs. Tungsten 26% Re,
Needle holder			
Platinum Z-Shape Blunt Needle Electrode	Protech International Inc	CUY611-P7.4	7mm Length x 4mm Exposed Tip, elec
18 gauge needle			
10cc syringe			
Scotch transparent tape	Office Depot	305324	
Neutral red solution 0.25%	Fisher Scientific	N12925	to stain the embryo
Dulbecco's Phosphate Buffered Saline	Sigma aldrich	D5773	Dulbecco's Phosphate Buffered Saline
Household bleach			for electrode cleaning
Fast green FGF (0.25%)	Spectrum Chemical Mfg Corp	FA105	
Predicted regulatory region Plasmid			
Reporter pasmid	Several options		The <i>ptk</i> EGFP was a kind gift from Ucl
		included in Endofree	
TE buffer	Qiagen	Maxiprep Plasmid Kit	for dilution of DNA

Without sodium bicarbonate

is are sufficient to provide stability during growth)

oration

oration

ri dish

rode for electroporation of neural tube
, 0.010, unsheathed, used to make fine cuts on embryo

ctrode for electroporation of lateral plate mesoderm

æ, Without sodium bicarbonate

rikawa and Kondoh, but Adgene has a *ptk* RFP that could be used for the reporter and pCAG-GFP for the transfection control.



1 Alewife Center #200
Cambridge, MA 02140
tel. 617.945.9051
www.jove.com

ARTICLE AND VIDEO LICENSE AGREEMENT

Manuscript #:

Title of Article:

Author(s):

Item 1 (check one box): The Author elects to have the Materials be made available (as described at <http://www.jove.com/publish>) via: ☒ Standard Access ☐ Open Access

Item 2 (check one box):

- ☒ The Author is NOT a United States government employee.
- ☐ The Author is a United States government employee and the Materials were prepared in the course of his or her duties as a United States government employee.
- ☐ The Author is a United States government employee but the Materials were NOT prepared in the course of his or her duties as a United States government employee.

ARTICLE AND VIDEO LICENSE AGREEMENT

1. **Defined Terms.** As used in this Article and Video License Agreement, the following terms shall have the following meanings: “**Agreement**” means this Article and Video License Agreement; “**Article**” means the article specified on the last page of this Agreement, including any associated materials such as texts, figures, tables, artwork, abstracts, or summaries contained therein; “**Author**” means the author who is a signatory to this Agreement; “**Collective Work**” means a work, such as a periodical issue, anthology or encyclopedia, in which the Materials in their entirety in unmodified form, along with a number of other contributions, constituting separate and independent works in themselves, are assembled into a collective whole; “**CRC License**” means the Creative Commons Attribution-Non Commercial-No Derivs 3.0 Unported Agreement, the terms and conditions of which can be found at: <http://creativecommons.org/licenses/by-nc-nd/3.0/legalcode>; “**Derivative Work**” means a work based upon the Materials or upon the Materials and other pre-existing works, such as a translation, musical arrangement, dramatization, fictionalization, motion picture version, sound recording, art reproduction, abridgment, condensation, or any other form in which the Materials may be recast, transformed, or adapted; “**Institution**” means the institution, listed on the last page of this Agreement, by which the Author was employed at the time of the creation of the Materials; “**JoVE**” means MyJoVE Corporation, a Massachusetts corporation and the publisher of *The Journal of Visualized Experiments*; “**Materials**” means the Article and / or the Video; “**Parties**” means the Author and JoVE; “**Video**” means any video(s) made by the Author, alone or in conjunction with any other parties, or by JoVE or its affiliates or agents, individually or in collaboration with the Author or any other parties,

incorporating all or any portion of the Article, and in which the Author may or may not appear.

2. **Background.** The Author, who is the author of the Article, in order to ensure the dissemination and protection of the Article, desires to have the JoVE publish the Article and create and transmit videos based on the Article. In furtherance of such goals, the Parties desire to memorialize in this Agreement the respective rights of each Party in and to the Article and the Video.

3. **Grant of Rights in Article.** In consideration of JoVE agreeing to publish the Article, the Author hereby grants to JoVE, subject to **Sections 4** and **7** below, the exclusive, royalty-free, perpetual (for the full term of copyright in the Article, including any extensions thereto) license (a) to publish, reproduce, distribute, display and store the Article in all forms, formats and media whether now known or hereafter developed (including without limitation in print, digital and electronic form) throughout the world, (b) to translate the Article into other languages, create adaptations, summaries or extracts of the Article or other Derivative Works (including, without limitation, the Video) or Collective Works based on all or any portion of the Article and exercise all of the rights set forth in (a) above in such translations, adaptations, summaries, extracts, Derivative Works or Collective Works and (c) to license others to do any or all of the above. The foregoing rights may be exercised in all media and formats, whether now known or hereafter devised, and include the right to make such modifications as are technically necessary to exercise the rights in other media and formats. If the “Open Access” box has been checked in **Item 1** above, JoVE and the

ARTICLE AND VIDEO LICENSE AGREEMENT

Author hereby grant to the public all such rights in the Article as provided in, but subject to all limitations and requirements set forth in, the CRC License.

4. Retention of Rights in Article. Notwithstanding the exclusive license granted to JoVE in **Section 3** above, the Author shall, with respect to the Article, retain the non-exclusive right to use all or part of the Article for the non-commercial purpose of giving lectures, presentations or teaching classes, and to post a copy of the Article on the Institution's website or the Author's personal website, in each case provided that a link to the Article on the JoVE website is provided and notice of JoVE's copyright in the Article is included. All non-copyright intellectual property rights in and to the Article, such as patent rights, shall remain with the Author.

5. Grant of Rights in Video – Standard Access. This **Section 5** applies if the "Standard Access" box has been checked in **Item 1** above or if no box has been checked in **Item 1** above. In consideration of JoVE agreeing to produce, display or otherwise assist with the Video, the Author hereby acknowledges and agrees that, Subject to **Section 7** below, JoVE is and shall be the sole and exclusive owner of all rights of any nature, including, without limitation, all copyrights, in and to the Video. To the extent that, by law, the Author is deemed, now or at any time in the future, to have any rights of any nature in or to the Video, the Author hereby disclaims all such rights and transfers all such rights to JoVE.

6. Grant of Rights in Video – Open Access. This **Section 6** applies only if the "Open Access" box has been checked in **Item 1** above. In consideration of JoVE agreeing to produce, display or otherwise assist with the Video, the Author hereby grants to JoVE, subject to **Section 7** below, the exclusive, royalty-free, perpetual (for the full term of copyright in the Article, including any extensions thereto) license (a) to publish, reproduce, distribute, display and store the Video in all forms, formats and media whether now known or hereafter developed (including without limitation in print, digital and electronic form) throughout the world, (b) to translate the Video into other languages, create adaptations, summaries or extracts of the Video or other Derivative Works or Collective Works based on all or any portion of the Video and exercise all of the rights set forth in (a) above in such translations, adaptations, summaries, extracts, Derivative Works or Collective Works and (c) to license others to do any or all of the above. The foregoing rights may be exercised in all media and formats, whether now known or hereafter devised, and include the right to make such modifications as are technically necessary to exercise the rights in other media and formats. For any Video to which this Section 6 is applicable, JoVE and the Author hereby grant to the public all such rights in the Video as provided in, but subject to all limitations and requirements set forth in, the CRC License.

7. Government Employees. If the Author is a United States government employee and the Article was prepared in the course of his or her duties as a United States government

employee, as indicated in **Item 2** above, and any of the licenses or grants granted by the Author hereunder exceed the scope of the 17 U.S.C. 403, then the rights granted hereunder shall be limited to the maximum rights permitted under such statute. In such case, all provisions contained herein that are not in conflict with such statute shall remain in full force and effect, and all provisions contained herein that do so conflict shall be deemed to be amended so as to provide to JoVE the maximum rights permissible within such statute.

8. Likeness, Privacy, Personality. The Author hereby grants JoVE the right to use the Author's name, voice, likeness, picture, photograph, image, biography and performance in any way, commercial or otherwise, in connection with the Materials and the sale, promotion and distribution thereof. The Author hereby waives any and all rights he or she may have, relating to his or her appearance in the Video or otherwise relating to the Materials, under all applicable privacy, likeness, personality or similar laws.

9. Author Warranties. The Author represents and warrants that the Article is original, that it has not been published, that the copyright interest is owned by the Author (or, if more than one author is listed at the beginning of this Agreement, by such authors collectively) and has not been assigned, licensed, or otherwise transferred to any other party. The Author represents and warrants that the author(s) listed at the top of this Agreement are the only authors of the Materials. If more than one author is listed at the top of this Agreement and if any such author has not entered into a separate Article and Video License Agreement with JoVE relating to the Materials, the Author represents and warrants that the Author has been authorized by each of the other such authors to execute this Agreement on his or her behalf and to bind him or her with respect to the terms of this Agreement as if each of them had been a party hereto as an Author. The Author warrants that the use, reproduction, distribution, public or private performance or display, and/or modification of all or any portion of the Materials does not and will not violate, infringe and/or misappropriate the patent, trademark, intellectual property or other rights of any third party. The Author represents and warrants that it has and will continue to comply with all government, institutional and other regulations, including, without limitation all institutional, laboratory, hospital, ethical, human and animal treatment, privacy, and all other rules, regulations, laws, procedures or guidelines, applicable to the Materials, and that all research involving human and animal subjects has been approved by the Author's relevant institutional review board.

10. JoVE Discretion. If the Author requests the assistance of JoVE in producing the Video in the Author's facility, the Author shall ensure that the presence of JoVE employees, agents or independent contractors is in accordance with the relevant regulations of the Author's institution. If more than one author is listed at the beginning of this Agreement, JoVE may, in its sole discretion, elect not take any action with respect to the Article until such time as it has received complete, executed Article and Video License Agreements from each

ARTICLE AND VIDEO LICENSE AGREEMENT

such author. JoVE reserves the right, in its absolute and sole discretion and without giving any reason therefore, to accept or decline any work submitted to JoVE. JoVE and its employees, agents and independent contractors shall have full, unfettered access to the facilities of the Author or of the Author's institution as necessary to make the Video, whether actually published or not. JoVE has sole discretion as to the method of making and publishing the Materials, including, without limitation, to all decisions regarding editing, lighting, filming, timing of publication, if any, length, quality, content and the like.

11. **Indemnification.** The Author agrees to indemnify JoVE and/or its successors and assigns from and against any and all claims, costs, and expenses, including attorney's fees, arising out of any breach of any warranty or other representations contained herein. The Author further agrees to indemnify and hold harmless JoVE from and against any and all claims, costs, and expenses, including attorney's fees, resulting from the breach by the Author of any representation or warranty contained herein or from allegations or instances of violation of intellectual property rights, damage to the Author's or the Author's institution's facilities, fraud, libel, defamation, research, equipment, experiments, property damage, personal injury, violations of institutional, laboratory, hospital, ethical, human and animal treatment, privacy or other rules, regulations, laws, procedures or guidelines, liabilities and other losses or damages related in any way to the submission of work to JoVE, making of videos by JoVE, or publication in JoVE or elsewhere by JoVE. The Author shall be responsible for, and shall hold JoVE harmless from, damages caused by lack of sterilization, lack of cleanliness or by contamination due to the making of a video by JoVE its employees, agents or independent contractors. All sterilization, cleanliness or

decontamination procedures shall be solely the responsibility of the Author and shall be undertaken at the Author's expense. All indemnifications provided herein shall include JoVE's attorney's fees and costs related to said losses or damages. Such indemnification and holding harmless shall include such losses or damages incurred by, or in connection with, acts or omissions of JoVE, its employees, agents or independent contractors.

12. **Fees.** To cover the cost incurred for publication, JoVE must receive payment before production and publication the Materials. Payment is due in 21 days of invoice. Should the Materials not be published due to an editorial or production decision, these funds will be returned to the Author. Withdrawal by the Author of any submitted Materials after final peer review approval will result in a US\$1,200 fee to cover pre-production expenses incurred by JoVE. If payment is not received by the completion of filming, production and publication of the Materials will be suspended until payment is received.

13. **Transfer, Governing Law.** This Agreement may be assigned by JoVE and shall inure to the benefits of any of JoVE's successors and assignees. This Agreement shall be governed and construed by the internal laws of the Commonwealth of Massachusetts without giving effect to any conflict of law provision thereunder. This Agreement may be executed in counterparts, each of which shall be deemed an original, but all of which together shall be deemed to be one and the same agreement. A signed copy of this Agreement delivered by facsimile, e-mail or other means of electronic transmission shall be deemed to have the same legal effect as delivery of an original signed copy of this Agreement.

A signed copy of this document must be sent with all new submissions. Only one Agreement required per submission.

CORRESPONDING AUTHOR:

Name:	Kerby C. Oberg, MD, PhD	
Department:	Pathology and Human Anatomy	
Institution:	Loma Linda University	
Article Title:	A Rapid In Vivo Bioassay for Developmentally Active Enhancers	
Signature:		Date: 6/29/2015

Please submit a signed and dated copy of this license by one of the following three methods:

- 1) Upload a scanned copy of the document as a pdf on the JoVE submission site;
- 2) Fax the document to +1.866.381.2236;
- 3) Mail the document to JoVE / Attn: JoVE Editorial / 1 Alewife Center #200 / Cambridge, MA 02139

For questions, please email submissions@jove.com or call +1.617.945.9051



LOMA LINDA UNIVERSITY

School of Medicine

October 7, 2015

Dr. Nam Nguyen,
Science Editor, and
Aleksandra Jachtorowicz
Deputy Director of Editorial - Life Sciences
Journal of Visualized Experiments
1 Alewife Center, Suite 200
Cambridge, MA 02140

Dear Drs Nguyen and Jachtorowicz;

Thank you for the editorial comments and we are especially grateful for the reviewers insight and suggestions. The manuscript will be better because of their input.
Please see the attached responses to each editorial concern and each reviewer concern and comment.

Also note that all of the authors have reviewed the revised manuscript, figures and comments.

Also, congratulations on receiving your first impact factor. Your hard work is paying off and I am sure that the impact will continue to climb in this highly interactive environment.

Sincerely,

A handwritten signature in black ink, appearing to read "Kerby C. Oberg".

Kerby C. Oberg, MD, PhD
Senior Administrative Professor
Department of Pathology and Human Anatomy,
Divisions of Human Anatomy and Pediatric Pathology

A Seventh-day Adventist Institution

DEPARTMENT OF PATHOLOGY AND HUMAN ANATOMY

DIVISION OF HUMAN ANATOMY | 24760 Stewart Street, Loma Linda, California 92350

(909) 558-7602 · fax (909) 558-7950 · www.llu.edu

Responses to Editor and Reviewer comments/critiques:

1. Please proofread the manuscript for spelling or grammar issues:

We have thoroughly reviewed the manuscript for spelling and grammar issues and made corresponding corrections.

2. Please include an ethics statement indicating that the protocol follows the animal care guidelines of your institution.

We have added an ethics statement as requested – lines 108 -115

3. Please the protocol text is a hard 2.75 page limit of highlighted protocol text for filming.

The highlighted protocol has been reevaluated and reduced as requested.

4. Some additional details are required:

- 5.2.1 - What steps are involved with this process? Any tips?

- 5.2.3 - What magnification should be used?

The additional details have been addressed in the protocol. Tips see 5.2.2.1 lines 355-357.

Magnification for different steps see lines 343-344, 349-350, and 352

Reviewers' comments:

Reviewer #1:

Manuscript Summary:

In this paper, the Authors describe a rapid, effective and cheap system for validating regulatory regions, based on transfection of chicken embryos with reporter plasmids. This system is particularly useful to study developmentally-regulated enhancers.

Thank you

Major Concerns:

1. The protocol is well described, but probably not easy to understand for a lab where there is no expert in chicken development. The video associated with the manuscript will be essential to acquire these techniques.

We have carefully evaluated the protocol with this concern in mind and have revised accordingly while keeping within the 2.75 page limit.

2. Considering the inter-laboratory variability, should each lab set up the best electroporation conditions (voltage, pulses)? The Authors should comment on the setting up of the electroporation conditions.

Appreciate the comment. We added our approach to optimizing the EP parameters for each embryonic stage or condition — see lines 463-465

Minor Concerns:

1. It would be useful to mention if the plasmids are available (Addgene, which laboratories can provide them).

The *ptkEGFP* plasmid was a gift from M. Uchikawa and H. Kondoh. Addgene does not have tk-EGFP but they have variants (tk-RED) and they refer to other companies that offer additional variant reporters (eg., Thermo Scientific: luciferase). A note was added to the acknowledgement section and a comment in the reagent excel file.

2. The cloning step is a standard procedure, the list of reagents for this step may be excluded from the text (besides the endofree maxiprep that is essential, as mentioned in the discussion, to reduce the embryo damages).

The common molecular biology reagents (enzymes, etc) have been deleted from the materials list in the excel file as requested, except for the endotoxin free maxiprep kit which is an essential element of the protocol. Mineral oil for the oil bubble technique was also added to the materials list.

Additional Comments to Authors:

N/A

Reviewer #2:

Manuscript Summary:

Given the emerging high-throughput methods for enhancer discovery, it will be useful to identify techniques for rapid validation of enhancer elements. The authors describe rapid chick bioassays for in vivo validation of putative regulatory elements. They discuss whole animal and targeted regional electroporation methods of introducing putative regulatory elements which are tested for their ability to drive reporter expression during chick development. The method is well-written, and the video promises to be informative. The authors have done a very nice job, and I have only a handful of suggestions for improvements:

Thank you

Major Concerns:

It would be good to suggest controls -- other than mutated enhancers shown in your representative data -- that might be easier to construct. Also, you mention the RFP construct positive control in line 424, but it might be good to mention this up front. I would add discussion of both negative and positive controls in 1).

In 1.4 of the protocol we indicate that the empty *ptk*-EGFP expression is used as a negative control to demonstrate basal activity of the plasmid and the beta-actin-driven RFP is used as a positive control and indicator of transfection efficiency. (Lines 127-129)

Minor Concerns:

Would it be appropriate to include an ethics statement and an indication that those who use this method should seek vertebrate animal approval?

An ethics statement regarding the use of vertebrate animals and the need to inquire about whether approval is needed for embryos has been included. Lines 108-115

Are there any safety precautions to be taken for the electroporation procedure?

Thanks for noting this – we have added a precautionary comment regarding the use of the electroporator. See step 2.3.4.1 in the protocol lines 218 - 221

Is a dissecting scope used/helpful during the embryo preparation?

Added “under dissecting microscope” when used throughout the protocol – see lines 197-198, 253 and 352.

You may wish to consider demonstrating the oil bubble method (line 419) in your video protocol, as it might be useful to see this step. It looks tricky.

The oil bubble was included in the video protocol – see lines 207-210 and lines 307-309

Line 102: TO validate

Thank you, the “to” was added in front of the validate in line 104

Line 389: ptk should be italicized; kinase instead of kiniase

Thank you, these have been corrected – see line 429 and 445

Line 447: maintain instead of maintaining

Thank you this has been corrected – see line 504

Fig. 1D: What is the pink area in the X-sectional view?

The pink area is illustrating a somite in x-section and extraneous to the lateral plate being electroporated. I have removed the color to minimize it distracting readers from the point of the illustration. I have also included an alternate image that labels the somite (so) and neural tube (nt) to improve clarity of the structures illustrated, but I think these are not necessary if the color has been removed. I prefer the first image - Fig 1mA.tif. If the alternate is preferred we will need to modify the legend to annotate these additional terms.

Fig. 2 E, M and N: These printed pretty dark, so you might want to brighten these images.

As requested, we have brightened images M & N (and also K & L within the same panel).

We have also brightened E also with a slight increase in contrast.