

Journal of Visualized Experiments

Isolation and primary culture of mouse aortic endothelial cells

--Manuscript Draft--

Manuscript Number:	JoVE52965R2
Full Title:	Isolation and primary culture of mouse aortic endothelial cells
Article Type:	Invited Methods Article - JoVE Produced Video
Keywords:	Primary Culture; mouse; Aorta; Segment attachment; Endothelial Cells; Endothelial sprouting.
Manuscript Classifications:	1.11.251: Cells, Cultured; 1.7.231.114: Arteries; 1.7.231.330: Endothelium, Vascular; 3.14: Cardiovascular Diseases
Corresponding Author:	Jiemei Wang Wayne State University School of Medicine Detroit, Michigan UNITED STATES
Corresponding Author Secondary Information:	
Corresponding Author E-Mail:	jjiwang@med.wayne.edu
Corresponding Author's Institution:	Wayne State University School of Medicine
Corresponding Author's Secondary Institution:	
First Author:	Jiemei Wang
First Author Secondary Information:	
Other Authors:	Alex F. Chen
	Kezhong Zhang
Order of Authors Secondary Information:	
Abstract:	<p>Vascular endothelium is essential to normal vascular homeostasis. Its dysfunction participates in various cardiovascular disorders. The mouse is an important model for cardiovascular disease research. This study demonstrates a simple method to isolate and culture endothelial cells from mouse aorta without any special equipment. To isolate endothelial cells, the thoracic aorta is quickly removed from the mouse body, and the attached adipose tissue and connective tissue is removed from the aorta. The aorta is cut into 1 mm rings. Each aortic ring is opened and seeded onto growth factor reduced matrix with the endothelium facing down. The segments are cultured in endothelial cell growth medium for about 4 days. The endothelial sprouting starts as early as day 2. The segments are then removed and the cells are cultured continually until they reach confluence. The endothelial cells are harvested using neutral proteinase and cultured in endothelial cell growth medium for another two passages before being used for experiments. Immunofluorescence staining indicated that after the second passage the majority of cells were double positive for DiI-ac-LDL uptake, Lectin binding, and CD31 staining, the typical characteristics of endothelial cells. It is suggested that cells at the second to third passages are suitable for in vitro and in vivo experiments to study the endothelial biology. Our protocol provides an effective means of identifying specific cellular and molecular mechanisms in endothelial cell physiopathology.</p>
Author Comments:	<p>March 10, 2015 Dear Dr. Singh,</p> <p>I would appreciate if you could consider our revised manuscript titled "Isolation and primary culture of mouse aortic endothelial cells." for publication in Journal of Visualized Experiments. The manuscript has been modified according to the reviewer's comments. We feel that the protocol described in this manuscript provides a great opportunity to study the endothelial-specific activities of targeted molecules, thus it is very useful in cardiovascular research.</p>

	<p>All authors have read and approved the submission of the manuscript; the manuscript has not been published and is not being considered for publication elsewhere. In addition, there is no known conflict of interest and financial disclosure to report related to this study.</p> <p>Thank you for considering our research work.</p> <p>With best regards,</p> <p>Wang, Jie-Mei</p>
Additional Information:	
Question	Response
If this article needs to be "in-press" by a certain date to satisfy grant requirements, please indicate the date below and explain in your cover letter.	
If this article needs to be filmed by a certain date to due to author/equipment/lab availability, please indicate the date below and explain in your cover letter.	

March 10, 2015

Dear Dr. Singh,

I would appreciate if you could consider our revised manuscript titled "Isolation and primary culture of mouse aortic endothelial cells." for publication in Journal of Visualized Experiments. The manuscript has been modified according to the reviewer's comments. We feel that the protocol described in this manuscript provides a great opportunity to study the endothelial-specific activities of targeted molecules, thus it is very useful in cardiovascular research.

All authors have read and approved the submission of the manuscript; the manuscript has not been published and is not being considered for publication elsewhere. In addition, there is no known conflict of interest and financial disclosure to report related to this study.

Thank you for considering our research work.

With best regards,

Wang, Jie-Mei
Center for Molecular Medicine and Genetics
Wayne State University
Detroit, MI 48201 USA
E-mail: jiwang@med.wayne.edu

TITLE:

Isolation and primary culture of mouse aortic endothelial cells

AUTHORS:

Wang, Jie-Mei
Center for Molecular Medicine and Genetics
Wayne State University
Detroit, MI
jiwang@med.wayne.edu

Chen, Alex F.
Third Xiangya Hospital and the Institute of Vascular Disease and Translational Medicine
Central South University
Changsha, Hunan, China
afychen@yahoo.com

Zhang, Kezhong
Center for Molecular Medicine and Genetics
Wayne State University
Detroit, MI
kzhang@med.wayne.edu

CORRESPONDING AUTHOR:

Wang, Jie-Mei
jiwang@med.wayne.edu

KEYWORDS:

Primary culture; Mouse; Aorta; Segment attachment; Endothelial cells; Endothelial sprouting.

SHORT ABSTRACT:

The vascular endothelial cells play a significant role in many important cardiovascular disorders. This article describes a simple method to isolate and expand endothelial cells from the mouse aorta without using any special equipment. Our protocol provides an effective means of identifying mechanisms in endothelial cell physiopathology.

LONG ABSTRACT:

The vascular endothelium is essential to normal vascular homeostasis. Its dysfunction participates in various cardiovascular disorders. The mouse is an important model for cardiovascular disease research. This study demonstrates a simple method to isolate and culture endothelial cells from the mouse aorta without any special equipment. To isolate endothelial cells, the thoracic aorta is quickly removed from the mouse body, and the attached adipose tissue and connective tissue are removed from the aorta. The aorta is cut into 1 mm rings. Each aortic ring is opened and seeded onto a growth factor reduced matrix with the endothelium facing down. The segments are cultured in endothelial cell growth medium for

about 4 days. The endothelial sprouting starts as early as day 2. The segments are then removed and the cells are cultured continually until they reach confluence. The endothelial cells are harvested using neutral proteinase and cultured in endothelial cell growth medium for another two passages before being used for experiments. Immunofluorescence staining indicated that after the second passage the majority of cells were double positive for Dil-ac-LDL uptake, Lectin binding, and CD31 staining, the typical characteristics of endothelial cells. It is suggested that cells at the second to third passages are suitable for *in vitro* and *in vivo* experiments to study the endothelial biology. Our protocol provides an effective means of identifying specific cellular and molecular mechanisms in endothelial cell physiopathology.

INTRODUCTION:

The vascular endothelium is not only a barrier layer that separates blood and tissue, it is considered a vast endocrine gland that stretches over the entire vascular tree with a surface area of 400 square meters¹. The well-being of the endothelium is essential to vascular homeostasis. The dysfunctional endothelium participates in various cardiovascular disorders, including atherosclerosis, vasculitis and ischemia/reperfusion injuries, etc.²⁻⁴. To date, the specific cellular and molecular mechanisms involved in these disease settings are not well understood due to the diffused anatomic nature of endothelium.

The mouse is an important model for research because genetic manipulation techniques are more developed in mice than in any other mammalian species. However, the isolation of primary murine aortic endothelial cells is considered particularly difficult because the small size of the aorta makes enzymatic digestion of endothelium impractical. Some reported procedures to isolate and purify ECs require magnetic-activated cell sorting (MACS), or fluorescence-activated cell sorting (FACS), most of which were applied to the heart or the lung, not the aorta⁵⁻⁷.

The goal of this protocol is to use a simple method to isolate and expand endothelial cells from the mouse aorta without using any special equipment. In this protocol, the freshly isolated aorta is cut into small segments and seeded onto a matrix with the endothelium facing down to allow for endothelial sprouting. After segments are removed, endothelial cells are expanded in endothelium-favored medium and are ready for experiments after two or three passages. The advantages of the described method are that: 1) considerably high numbers of endothelial cells are harvested from a single aorta; 2) cell viability is well preserved; and 3) no special equipment or technique is needed. It provides an effective means of identifying specific cellular and molecular mechanisms in endothelial cell pathophysiology. For those who are interested in studying primary cultured endothelial cells from either gene knock-out mice, gene knock-in mice, or a murine disease model, this protocol is very useful and easy to practice.

PROTOCOL:

1. Isolation of aorta from mice.

All the procedures described here were approved by the Institutional Animal Care and Use

Committee of Wayne State University.

- 1.1) Put the mouse into the induction chamber of the anesthesia machine. Set the isoflurane flow to 4% in conjunction with 25% fresh air and 75% O₂. Anesthetize the mouse by inhalation of isoflurane (4% for induction, $\pm 1.0\%$ for maintenance) in conjunction with 25% fresh air and 75% O₂ via induction chamber followed by a dedicated nose cone.
- 1.2) Check the mouse every 5 minutes until the appropriate level of anesthesia is reached (lack of withdrawal to toe pinch).
- 1.3) Take the mouse out of the induction chamber and continue isoflurane inhalation through the dedicated nose cone that is connected to the anesthesia machine. Switch the isoflurane flow to 1% to maintain anesthesia.
- 1.4) While it is under anesthesia, put the mouse onto a surgery pad, positioned on its back. Use laboratory tape to secure the limbs.
- 1.5) Use a heating lamp to keep the mouse warm. Keep the lamp in an appropriate distance from the mouse so that the mouse will not over-heat.
- 1.6) Spray the chest with 70% ethanol.
- 1.7) Use dissection scissors to open the abdomen from the midline, and expose the abdominal aorta. Open the chest cavity and expose the heart and lungs.
- 1.8) Cut the abdominal aorta at the middle with dissection scissors to release the blood.
- 1.9) Fill a 1 mL syringe (with 25G needle) with 1 mL of PBS containing 1,000 U/mL of heparin. Inject PBS containing 1,000 U/mL of heparin to the left ventricle and perfuse the aorta. Push the heart and the lung with forceps at the great arteries to the right side of the mice to expose the thoracic aorta.
- 1.10) Quickly remove the thoracic aorta using micro-dissection forceps and put it in ice-cold 1X PBS (sterile), then transport the container into a laminar airflow hood.
- 1.11) Insert a 1 mL syringe fitted with 25G needle into one end of the aorta, and gently flush the aorta with ice-cold PBS to remove the blood.
- 1.12) Use micro-dissection forceps to remove as much of the attached adipose tissue and small lateral vessels as possible.
- 1.13) Immediately transfer the aorta to endothelial growth medium.

1.14) Cut the aorta into 1 mm rings using a sterile scalpel blade. Harvest about 8 – 10 rings per aorta.

1.15) Open each aortic ring using a pair of micro-dissection scissors.

2. Seed the aortic segments on matrix.

2.1. When not in use, keep the growth factor-reduced matrix in -20 °C to prevent solidification. Put the growth factor-reduced matrix in 4 °C at least overnight to allow a complete thaw.

2.2. Precool a 6-well plate and pipet tips to -20 °C for at least 10 minutes. Put the 6-well plate on ice and coat one well of the plate with 1 mL of matrix without introducing any air bubbles. Place the plate in a 37 °C incubator for 20 min to allow the matrix to solidify.

2.3. Implant the aortic pieces onto the solidified matrix using sterile micro-dissection forceps. Place the pieces lumen-side-down on the matrix without touching the endothelium. Place 3-4 aortic segments close to each other on the matrix.

2.4. Add just enough endothelial cell growth medium to keep segments wet (~200 µL).

2.5. Incubate the plate at 37 °C under 5% CO₂ for 4 to 6 hours. At the end of the day, add just enough medium to cover the aortic segments.

2.6. Observe the aortic segment sprouting periodically under a phase-contrast microscope. Check medium level and cell growth each day. Add medium if necessary to keep aortic segments covered.

2.7. On the 4th day, gently remove the medium and remove the aortic segments from the matrix using a sterile needle without interrupting the growing endothelial cells.

2.8. Add 2 mL of new endothelial cell growth medium and allow the endothelial cells continue to proliferate on matrix for 2-3 days.

3. Initial passaging of the mouse aortic endothelial cells.

3.1. Coat a new T12.5 flask with gelatin (0.1%), incubate at 37 °C for 30 minutes.

3.2. Wash the matrix plates carefully with sterile 37 °C PBS.

3.3. Add 2 mL of neutral proteinase (50 units/mL) to the matrix plates and incubate at room temperature on orbital platform with occasional shaking. Check the cells under a phase-contrast microscope to make sure the majority of cells are detached.

- 3.4. Add 2 mL of D-Val to inactivate the neutral proteinase.
- 3.5. Collect the supernatant carefully in a 15 mL centrifuge tube. Wash the plate with 2 mL D-Val and collect the supernatant.
- 3.6. Centrifuge the cell suspension at 900 x g for 5 minutes at room temperature.
- 3.7. Re-suspend the cell pellet in 4 mL of endothelial cell growth medium and plate in the T12.5 flask coated with gelatin. Incubate the cells at 37 °C, 5% CO₂ for 2 hours.
- 3.8. Replace the medium. Incubate the cells at 37 °C, 5% CO₂ until they are 85% - 90% confluent.

4. Passaging of the mouse aortic endothelial cells.

- 4.1. Coat two new T12.5 flasks with gelatin (0.1%), incubate at 37 °C for 30 minutes. Pre-heat Trypsin-EDTA (0.25% Trypsin, 0.02 EDTA in PBS) and sterile PBS at 37 °C for about 15 minutes.
- 4.2. Wash the cells carefully with sterile 37 °C PBS.
- 4.3. Add 0.5 mL of Trypsin-EDTA (0.25% Trypsin, 0.02 EDTA in PBS) and incubate at 37 °C for ~1 minute or until the majority of the cells turn round.
- 4.4. Add 2 mL of endothelial cell growth medium to stop the digestion. Pipette the cell suspension up and down within the flask several times. If necessary, use a cell scraper to collect the cells.
- 4.5. Collect the cell suspension in a 15 mL centrifuge tube. Centrifuge the cell suspension at 900 x g for 5 minutes at room temperature.
- 4.6. Re-suspend the cell pellet in 4 mL of endothelial cell growth medium and plate in 2 T12.5 flasks coated with gelatin. Incubate the cells at 37 °C, 5% CO₂ for 2 hours.
- 4.7. Replace the medium. Incubate the cells at 37 °C, 5% CO₂ until they are 85% - 90% confluent.
- 4.8. Use the mouse aortic endothelial cells after 2-3 passages.

5. Characterization of the mouse aortic endothelial cells.

- 5.1. Re-plate the cells.
 - 5.1.1) Coat a 6-well plate with gelatin (0.1%), incubate at 37 °C for 30 minutes. Rinse the plate with PBS.

5.1.2) Pre-heat the Trypsin-EDTA and sterile PBS to 37 °C for about 15 minutes.

5.1.3) Wash the cells with sterile PBS 3 times. Add 0.5 mL of Trypsin/EDTA to the cells, incubate for ~1 minute at 37 °C or until the majority of the cells turn round.

5.1.4) Add 2 mL of endothelial cell growth medium to stop the digestion. Pipette the cell suspension up and down within the flask several times. If necessary, use a cell scraper to collect the cells.

5.1.5) Collect the cell suspension in a 15 mL centrifuge tube. Centrifuge the cell suspension at 900 x g for 5 minutes at room temperature.

5.1.6) Discard the supernatant, re-suspend the cells in endothelial cell growth medium. Seed the cells in 6-well plate coated with gelatin at the density of 3×10^5 /well.

5.1.7) Incubate the cells overnight at 37 °C, 5% CO₂ to allow the cells to attach to the culture surface.

5.2. Dil-ac-LDL uptake and *Ulex*-lectin binding.

5.2.1) Store the 1,1'-dioctadecyl-3,3,3',3'-tetramethylindocarbocyanine perchlorate-labeled acetylated LDL (Dil-ac-LDL) at -20 °C. Before staining, thaw Dil-ac-LDL on ice. The stock Dil-ac-LDL solution is 1 mg/mL. Store the FITC-labeled *Ulex europaeus* agglutinin (*Ulex*-Lectin, 1 µg/mL) at 4 °C. The stock *Ulex*-Lectin solution is 1 mg/mL. Store Hoechst 33342 at 4 °C. The stock Hoechst 33342 solution is 100 µg/mL.

5.2.2) Add 10 µL of Dil-ac-LDL stock solution to 1 mL of culture medium to make a final concentration of 10 µg/mL.

5.2.3) Prior to staining, remove the old medium and wash the cells in each well with new medium.

5.2.4) Remove the new medium and add the Dil-ac-LDL staining medium.

5.2.5) Incubate the cells at 37 °C, 5% CO₂ for 1 hour.

5.2.6) Wash the cells with sterile 1X PBS 3 times.

5.2.7) Add 1 mL of 10% formalin to fix the cells. Put the plate in room temperature for about 30 minutes.

5.2.8) Wash the cells with sterile 1X PBS 3 times. Avoid light.

5.2.9) Add 1 mL sterile 1X PBS that contains 10 μ L of *Ulex*-Lectin.

5.2.10) Incubate the cells at room temperature in the dark for 1 hour.

5.2.11) Remove the *Ulex*-Lectin by washing the cells with sterile 1X PBS 3 times.

5.2.12) Add Hoechst 33342 to final concentration of 1 μ g/mL, incubate 10 minutes in the dark.

5.2.13) View the fluorescence of Dil-ac-LDL (red, excitation wavelength of 576 nm), *Ulex*-Lectin (green, excitation wavelength of 519 nm) and Hoechst (blue, excitation wavelength of 361 nm) with an inverted fluorescent microscope.

5.3. Fluorescent staining for CD31, VEGFR2, eNOS, VE-Cadherin and Calponin.

5.3.1) Store FITC-conjugated anti-mouse CD31 antibody, eNOS antibody, VE-Cadherin antibody, FITC-conjugated anti-rabbit IgG at 4 °C in the dark. Store VEGFR2 antibody in -20 °C.

5.3.2) Wash the cells with sterile 1X PBS 3 times.

5.3.3) Add 1 mL of 10% formalin to fix the cells. Put the plate in room temperature for about 30 minutes.

5.3.4) Wash the cells with sterile 1X PBS 3 times.

5.3.5) To stain CD31, add 1 mL of sterile 1X PBS that contains 10 μ L of CD31-FITC antibody. To stain either VEGFR2, eNOS, VE-Cadherin or calponin, add 1ml of sterile 1X PBS that contains 4 μ L of VEGFR2, eNOS, VE-Cadherin or calponin primary antibody, respectively.

5.3.6) Incubate the cells on ice for 1 hour in the dark.

5.3.7) Remove the antibodies by washing the cells with sterile PBS 3 times.

5.3.8) For the staining of VEGFR2, eNOS, VE-Cadherin or calponin, add 1ml of sterile 1X PBS that contains 10 μ L of FITC-conjugated anti-rabbit IgG. Incubate the cells on ice for 1 hour in the dark. Remove the IgG by washing the cells with sterile PBS 3 times.

5.3.9) Add Hoechst 33342 to final concentration of 1 μ g/mL, incubate 10 minutes in the dark.

5.3.10) View the fluorescence of CD31, VEGFR2, eNOS, VE-Cadherin, calponin (green, excitation wavelength of 518-535 nm) and Hoechst (blue, excitation wavelength of 361 nm) with an inverted fluorescent microscope.

REPRESENTATIVE RESULTS:

Endothelial cell sprouting

Spontaneous endothelial cell sprouting started from a mouse aorta segment. The mouse aorta segment was allowed to grow on a growth factor-reduced matrix then in endothelial cell growth medium for 4 days. The endothelial cell sprouting usually appears in 2 - 4 days. Photomicrographs were taken on day 4 (Figure 1). As shown in the pictures, numerous endothelial cells migrate away from the segment. The newly formed sprouts continue to extend from the segment and the branch.

Endothelial cell phenotypes

These cells demonstrated spindle-shaped and cobblestone-like appearances after initial passage (Figure 2A). The attached cells were labeled with Dil-ac-LDL and *Ulex*-Lectin for one hour. As shown in Figures 2B-2E, most of the cells were double-positive for Dil-ac-LDL uptake (red) and *Ulex*-Lectin binding (green). Meanwhile, after the second passage, more than 95% of the cells were positive for Platelet endothelial cell adhesion molecule 1 (CD31, PECAM-1, Figure 2F), VEGFR2 (Figure 2G), VE-Cadherin (Figure 2H), eNOS (Figure 2I) but negative for Calponin (Figure 2J) which is a smooth muscle cell marker.

Figure 1: Endothelial cell sprouting

Mouse aortic segment was seeded onto growth factor-reduced matrix and cultured in endothelial cell growth medium. Endothelial cell sprouting started as early as on day 2 (A, bar=100 μ m) and increased in the following 2-3 days (B, C, bar=100 μ m). The segment was removed on day 4 (D, Bar=500 μ m).

Figure 2. Endothelial cell phenotypes

The attached cells display spindle-shaped and cobblestone-like appearances (A, bar=100 μ m), double-positive fluorescence of Dil-ac-LDL and *Ulex*-Lectin (B-E, bar=100 μ m). Meanwhile, platelet endothelial cell adhesion molecule 1 (CD31, PECAM-1), VEGFR2, VE-Cadherin, eNOS were positive in >95% of the cells after the second passage (F-J, bar=100 μ m) Most of the cells were negative for Calponin staining, which is a smooth muscle cell marker (K, bar=100 μ m).

DISCUSSION:

This study demonstrates a simple method to isolate and culture endothelial cells from a mouse aorta without any special equipment. The immunofluorescence staining indicated that the majority of cells were endothelial cells after the second passage. It is suggested that cells at second to third passage are suitable for *in vitro* and *in vivo* experiments to study endothelial biology.

The key notes from the present protocol

There are five critical points in the procedure. First, the vascular lumen is flushed with PBS containing heparin to minimize endothelial cell activation and clot formation. Second, the time between cardiac arrest and the seeding of aortic segment onto matrix is critical to endothelium viability. While clearing the peri-arterial adipose tissue and connective tissue, avoid stretching the aorta and limit the time spent on this step to 10-15 minutes. Third, pour just enough media to cover the segments after they are seeded. Too much media will cause the aortic segments to float. Fourth, the culture medium contains a high concentration of endothelial cell growth

supplement, making endothelial cells grow much faster than when cultured in endothelial growth medium-2. The outgrowth of endothelial cells will suppress other cell types such as smooth muscle cells and fibroblasts. Fifth, the timing to remove aortic segment from matrix is also critical to the purity of endothelial cells. This step prevents contamination by fibroblasts and smooth muscle cells. The segment should be removed before the development of the tube network. Delayed removal of aortic segment will result in contamination of other cell types such as fibroblasts or smooth muscle cells. Please note that this approach is also used to study angiogenesis *in vitro* and the formation of capillary like structures indicates angiogenesis capacity of the aorta segment. Based on our experience, if the segments are removed after the capillary-like structure fully develops, the incidence of smooth muscle cells contamination increases dramatically. Therefore, we feel that the best time point to remove the segment is when the network starts to be visible but is not fully developed. In this way, we are able to harvest as many endothelial cells as possible while keeping contamination by smooth muscle cells to a minimum.

The limitations of the present protocol

There are some limitations of the described methods. First, there are chances of contamination of fibroblasts and smooth muscle cells, if the aortic segments are not removed before tube networks develop. The fibroblasts or smooth muscle cells may start to attach to the matrix and proliferate 3 to 5 days after seeding. Therefore, always remove the aortic segments in a timely manner. As a secondary precaution, changing the medium 2 hours after re-plating the cells onto a new flask also helps to eliminate the possible contamination of fibroblasts and smooth muscle cells. Second, these cells are cultured *in vitro* for 7-10 days after isolation. It is possible that their phenotypes may be different from freshly isolated endothelial cells. For example, if the endothelial cells from a mouse model of hyperlipidemia are cultured in endothelial cell growth medium without a high concentration of lipids, they are not exposed to the hyperlipidemic environment as they were in animals. The cultured endothelial cells may behave differently from freshly isolated endothelial cells⁸. This problem exists in all *in vitro* cultured primary cells and cell lines. Adding the pathological stimuli into the culture medium to mimic the *in vivo* environment may be a solution.

Endothelial cells demonstrate different phenotypes in different vascular branches

The vascular system is a hierarchical structure composed of arteries, veins, and capillaries. The heterogeneity of endothelial cells that reside in the specific "zones" of vasculature plays a large part in creating functional diversity in the vascular system^{9,10}. Even in a single vascular bed, such as the aorta, endothelial heterogeneity exists. Laminar blood flow with high shear stress in the straight part of the aorta induces endothelial nitric oxide synthase and thrombomodulin¹¹. Therefore, endothelial cells that reside in the straight part of the aorta demonstrate anti-coagulant, anti-adhesive, and anti-inflammatory properties^{12,13}. In contrast, turbulent blood flow at areas where arteries branch or turn sharply (aortic arch) reduces endothelial nitric oxide synthase expression and induces atherogenic genes in endothelial cells, i.e., the monocyte chemoattractant protein-1 (MCP-1), and platelet-derived growth factors (PDGFs), resulting in a pro-inflammatory and atherosclerotic endothelial phenotype⁶. In addition, endothelial cells in the vessels of each organ undergo anatomic and functional adaptive changes that are specific to

that organ's functions^{14,15}. Nonetheless, there is a consensus that several cell surface markers, functional genes and cell activities can be used to characterize endothelial cell lineage. These cell surface markers include Platelet endothelial cell adhesion molecule (PCAM-1, CD31), von Willebrand factor (vWF), Vascular Endothelial-Cadherin (VE-Cadherin, CD144). The most frequently used functional genes include endothelial nitric oxide synthase (eNOS) and Vascular Endothelial Growth Factor Receptor (VEGFR). The cell activities that are usually seen in endothelial cell lineage include uptake of Dil-ad-LDL and binding Lectin, which forms cord-like structures on the matrix.

The significance and future applications of primary cultured mouse aortic endothelial cells

The method described here is used to study macrovascular endothelial cells. The significance of this protocol is that it provides a great opportunity to study the endothelial-specific activities of targeted molecules and can be done in knockout and transgenic mouse models, making it very useful in cardiovascular research. The ability to grow high numbers of mouse aortic endothelial cells under defined conditions makes this ideal technique to better define the phenotypes and functions of endothelium. This technique improves the practicality of testing the prospective potential of endothelial cell-based therapy in murine models, through either intravenous injection or engraftment of endothelial cells.

DISCLOSURES:

The authors have nothing to disclose.

ACKNOWLEDGMENTS:

This study is supported by American Heart Association Scientist Development Grant 13SDG16930098 and the National Science Foundation of China Youth Award 81300240 (PI: Wang). We thank Roberto Mendez from Wayne State University for assisting in the preparation of the manuscript.

REFERENCES:

- 1 Simionescu, M. Implications of early structural-functional changes in the endothelium for vascular disease. *Arteriosclerosis, thrombosis, and vascular biology* **27**, 266-274, doi: 10.1161/01.ATV.0000253884.13901.e4 (2007).
- 2 Cid, M. C., Segarra, M., Garcia-Martinez, A. & Hernandez-Rodriguez, J. Endothelial cells, antineutrophil cytoplasmic antibodies, and cytokines in the pathogenesis of systemic vasculitis. *Current rheumatology reports* **6**, 184-194, doi: 10.1007/s11926-004-0067-3 (2004).
- 3 Wang, J. M. *et al.* C-Reactive protein-induced endothelial microparticle generation in HUVECs is related to BH4-dependent NO formation. *Journal of vascular research* **44**, 241-248, doi: 10.1159/000100558 (2007).
- 4 Wang, J. M. *et al.* Increased circulating CD31+/CD42- microparticles are associated with impaired systemic artery elasticity in healthy subjects. *American journal of hypertension* **20**, 957-964, doi: 10.1016/j.amjhyper.2007.04.005 (2007).
- 5 Mackay, L. S. *et al.* Isolation and characterisation of human pulmonary microvascular endothelial cells from patients with severe emphysema. *Respiratory research* **14**, 23, doi: 10.1186/1465-9921-14-23 (2013).

- 6 Marelli-Berg, F. M., Peek, E., Lidington, E. A., Stauss, H. J. & Lechler, R. I. Isolation of endothelial cells from murine tissue. *Journal of immunological methods* **244**, 205-215, doi: 10.1016/S0022-1759(00)00258-1 (2000).
- 7 Bowden, R. A. *et al.* Role of alpha4 integrin and VCAM-1 in CD18-independent neutrophil migration across mouse cardiac endothelium. *Circulation research* **90**, 562-569, doi: 10.1161/01.RES.0000013835.53611.97 (2002).
- 8 Lu, Y. *et al.* Palmitate induces apoptosis in mouse aortic endothelial cells and endothelial dysfunction in mice fed high-calorie and high-cholesterol diets. *Life sciences* **92**, 1165-1173, doi: 10.1016/j.lfs.2013.05.002 (2013).
- 9 Atkins, G. B., Jain, M. K. & Hamik, A. Endothelial differentiation: molecular mechanisms of specification and heterogeneity. *Arteriosclerosis, thrombosis, and vascular biology* **31**, 1476-1484, doi: 10.1161/ATVBAHA.111.228999 (2011).
- 10 Aitsebaomo, J., Portbury, A. L., Schisler, J. C. & Patterson, C. Brothers and sisters: molecular insights into arterial-venous heterogeneity. *Circulation research* **103**, 929-939, doi: 10.1161/CIRCRESAHA.108.184937 (2008).
- 11 Shimamoto, T. Drugs and foods on contraction of endothelial cells as a key mechanism in atherogenesis and treatment of atherosclerosis with endothelial-cell relaxants (cyclic AMP phosphodiesterase inhibitors). *Advances in experimental medicine and biology* **60**, 77-105 (1975).
- 12 Chiu, J. J. & Chien, S. Effects of disturbed flow on vascular endothelium: pathophysiological basis and clinical perspectives. *Physiological reviews* **91**, 327-387, doi: 10.1152/physrev.00047.2009 (2011).
- 13 Gimbrone, M. A., Jr., Topper, J. N., Nagel, T., Anderson, K. R. & Garcia-Cardena, G. Endothelial dysfunction, hemodynamic forces, and atherogenesis. *Annals of the New York Academy of Sciences* **902**, 230-239; discussion 239-240, doi: 10.1111/j.1749-6632.2000.tb06318.x (2000).
- 14 Rostgaard, J. & Qvortrup, K. Electron microscopic demonstrations of filamentous molecular sieve plugs in capillary fenestrae. *Microvascular research* **53**, 1-13, doi: 10.1006/mvre.1996.1987 (1997).
- 15 Brutsaert, D. L. Cardiac endothelial-myocardial signaling: its role in cardiac growth, contractile performance, and rhythmicity. *Physiological reviews* **83**, 59-115, doi: 10.1152/physrev.00017.2002 (2003).

Figure 1
[Click here to download high resolution image](#)

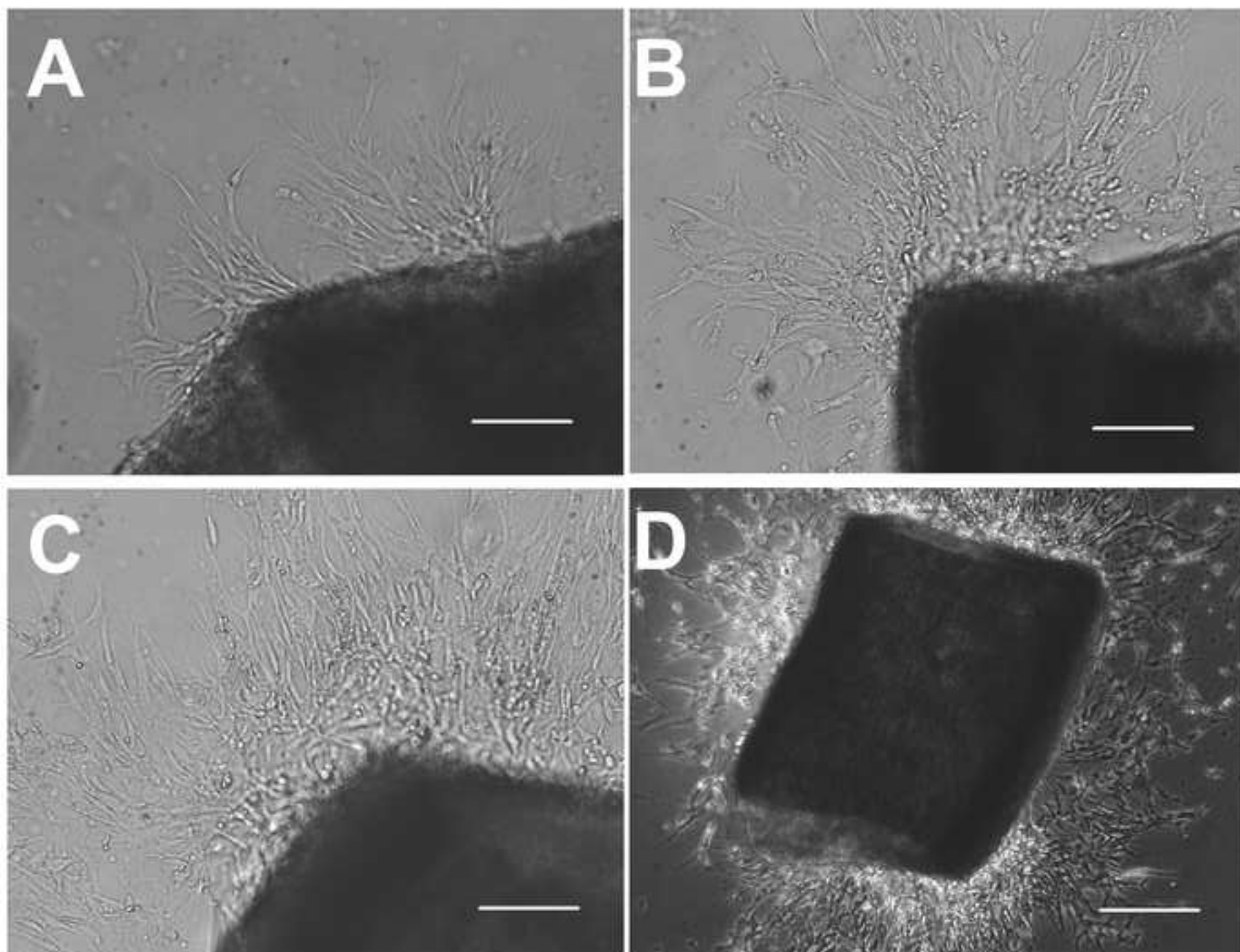
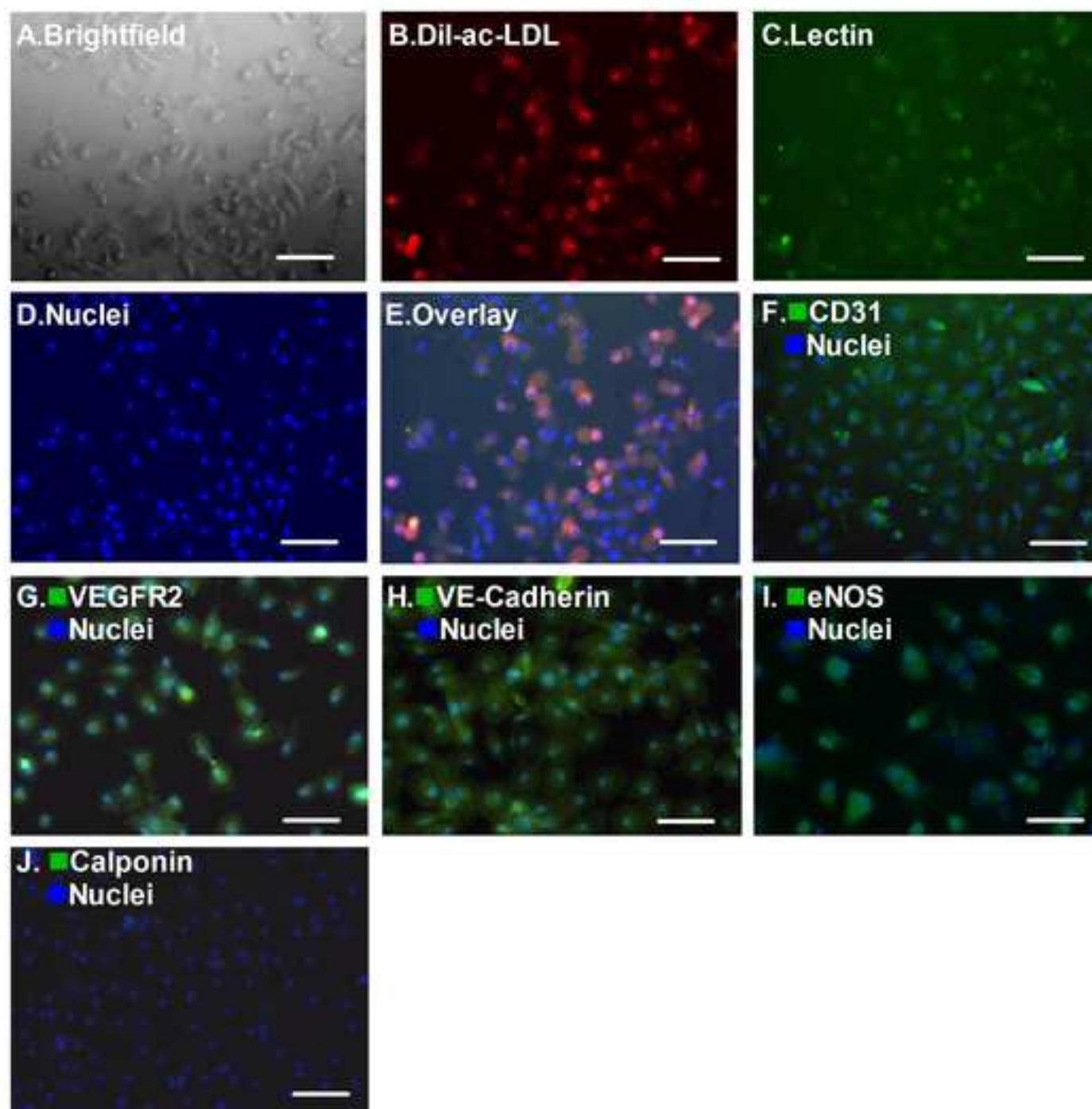


Figure 2

[Click here to download high resolution image](#)



Excel Spreadsheet- Table of Materials/Equipment

[Click here to download Excel Spreadsheet- Table of Materials/Equipment: Book1.xlsx](#)

4- or 6-week-old mice (Jackson Laboratory, #000664).

Sterile 1X phosphate-buffered saline (PBS, Gibco, #10010-023).

Sterile 1X PBS containing 1,000 U/ml of heparin (Sigma Aldrich, H3149).

Endothelial cell growth medium (Dulbeccos' Modified Eagle's Medium[DMEM] with 25mM HEPES[Gibco, #12320- Growth factor reduced matrix (BD Biosciences, #356231).

Neutral proteinase (Dispase, 1U/ml, Fisher Scientific #CB-40235) and D-Val medium (D-Valine, 0.034g/L[Sigma, #1 Gelatin (100-200 µg/cm², Sigma, #G1393).

1,1'-dioctadecyl-3,3',3'- tetramethylindo- carbocyanine perchlorate-labeled acetylated LDL (Dil-ac-LDL, Life Tech Anti-mouse vascular endothelial growth factor receptor 2 antibody (Cell signaling, #9698), anti-mouse endothelial One ml syringe fitted with 25-G needle (Fisher Scientific, #50-900-04222).

100mm Peri dishes (Fisher Scientific, #07-202-516).

Six-well cell culture plates (Fisher Scientific, #08-772-1B).

T12.5 cultuer flask (Fisher Scientific, #50-202-076)

Scissors, forceps, microdissection scissors and forceps, Scalpel blade (Fine Science Tools, Inc)

Anesthesia machine with isoflurane (Webster Veterinary Supply, #07-806-3204), heating lamp

Centrifuge machine.

Inverted phase-contrast microscope.

inverted fluorescence microscope.

032], supplemented with 100µg/ml endothelial cell growth supplement from bovine neural tissue [ECG

255], in Dulbeccos' Modified Eagle's Medium, low glucose[Gibco, #12320-032]).

anologies, #L3484), FITC-labeled Ulex europeus agglutinin (Ulex-Lectin, Sigma, #L9006), Anti-mouse CD:
nitric oxide synthase (Abcam, #ab5589), anti-mouse vascular endothelium-cadherin (Abcam, #33168), a

S, Sigma, #2759], 10% fetal bovine serum [FBS, Gibco, #10082-147], 1,000 U/ml heparin [Sigma Aldrich, I

31-FITC conjugated antibody (BD Biosciences, # 553372).

anti-mouse calponin (Abcam, #700), FITC-conjugated anti-rabbit IgG (Sigma, #F6005)

H3149], 10,000U/ml penicillin and 10mg/ml streptomycin [Gibco, #15140-122]).



1 Alewife Center #200
Cambridge, MA 02140
tel. 617.945.9051
www.jove.com

ARTICLE AND VIDEO LICENSE AGREEMENT

Title of Article:

Isolation and primary culture of mouse aortic endothelial cells

Author(s):

Wang, Jie-Mei, Chen, Alex F., Zhang, Kezhong

Item 1 (check one box): The Author elects to have the Materials be made available (as described at

<http://www.jove.com/publish>) via: ☒ Standard Access ☐ Open Access

Item 2 (check one box):

- ☒ The Author is NOT a United States government employee.
- ☐ The Author is a United States government employee and the Materials were prepared in the course of his or her duties as a United States government employee.
- ☐ The Author is a United States government employee but the Materials were NOT prepared in the course of his or her duties as a United States government employee.

ARTICLE AND VIDEO LICENSE AGREEMENT

1. **Defined Terms.** As used in this Article and Video License Agreement, the following terms shall have the following meanings: “**Agreement**” means this Article and Video License Agreement; “**Article**” means the article specified on the last page of this Agreement, including any associated materials such as texts, figures, tables, artwork, abstracts, or summaries contained therein; “**Author**” means the author who is a signatory to this Agreement; “**Collective Work**” means a work, such as a periodical issue, anthology or encyclopedia, in which the Materials in their entirety in unmodified form, along with a number of other contributions, constituting separate and independent works in themselves, are assembled into a collective whole; “**CRC License**” means the Creative Commons Attribution-Non Commercial-No Derivs 3.0 Unported Agreement, the terms and conditions of which can be found at: <http://creativecommons.org/licenses/by-nc-nd/3.0/legalcode>; “**Derivative Work**” means a work based upon the Materials or upon the Materials and other pre-existing works, such as a translation, musical arrangement, dramatization, fictionalization, motion picture version, sound recording, art reproduction, abridgment, condensation, or any other form in which the Materials may be recast, transformed, or adapted; “**Institution**” means the institution, listed on the last page of this Agreement, by which the Author was employed at the time of the creation of the Materials; “**JoVE**” means MyJoVE Corporation, a Massachusetts corporation and the publisher of *The Journal of Visualized Experiments*; “**Materials**” means the Article and / or the Video; “**Parties**” means the Author and JoVE; “**Video**” means any video(s) made by the Author, alone or in conjunction with any other parties, or by JoVE or its affiliates or agents, individually or in collaboration with the Author or any other parties, incorporating all or any portion of the Article, and in which the Author may or may not appear.

2. **Background.** The Author, who is the author of the Article, in order to ensure the dissemination and protection of the Article, desires to have the JoVE publish the Article and create and transmit videos based on the Article. In furtherance of such goals, the Parties desire to memorialize in this Agreement the respective rights of each Party in and to the Article and the Video.

3. **Grant of Rights in Article.** In consideration of JoVE agreeing to publish the Article, the Author hereby grants to JoVE, subject to **Sections 4** and **7** below, the exclusive, royalty-free, perpetual (for the full term of copyright in the Article, including any extensions thereto) license (a) to publish, reproduce, distribute, display and store the Article in all forms, formats and media whether now known or hereafter developed (including without limitation in print, digital and electronic form) throughout the world, (b) to translate the Article into other languages, create adaptations, summaries or extracts of the Article or other Derivative Works (including, without limitation, the Video) or Collective Works based on all or any portion of the Article and exercise all of the rights set forth in (a) above in such translations, adaptations, summaries, extracts, Derivative Works or Collective Works and (c) to license others to do any or all of the above. The foregoing rights may be exercised in all media and formats, whether now known or hereafter devised, and include the right to make such modifications as are technically necessary to exercise the rights in other media and formats. If the “Open Access” box has been checked in **Item 1** above, JoVE and the Author hereby grant to the public all such rights in the Article as provided in, but subject to all limitations and requirements set forth in, the CRC License.

ARTICLE AND VIDEO LICENSE AGREEMENT

4. Retention of Rights in Article. Notwithstanding the exclusive license granted to JoVE in **Section 3** above, the Author shall, with respect to the Article, retain the non-exclusive right to use all or part of the Article for the non-commercial purpose of giving lectures, presentations or teaching classes, and to post a copy of the Article on the Institution's website or the Author's personal website, in each case provided that a link to the Article on the JoVE website is provided and notice of JoVE's copyright in the Article is included. All non-copyright intellectual property rights in and to the Article, such as patent rights, shall remain with the Author.

5. Grant of Rights in Video – Standard Access. This **Section 5** applies if the "Standard Access" box has been checked in **Item 1** above or if no box has been checked in **Item 1** above. In consideration of JoVE agreeing to produce, display or otherwise assist with the Video, the Author hereby acknowledges and agrees that, Subject to **Section 7** below, JoVE is and shall be the sole and exclusive owner of all rights of any nature, including, without limitation, all copyrights, in and to the Video. To the extent that, by law, the Author is deemed, now or at any time in the future, to have any rights of any nature in or to the Video, the Author hereby disclaims all such rights and transfers all such rights to JoVE.

6. Grant of Rights in Video – Open Access. This **Section 6** applies only if the "Open Access" box has been checked in **Item 1** above. In consideration of JoVE agreeing to produce, display or otherwise assist with the Video, the Author hereby grants to JoVE, subject to **Section 7** below, the exclusive, royalty-free, perpetual (for the full term of copyright in the Article, including any extensions thereto) license (a) to publish, reproduce, distribute, display and store the Video in all forms, formats and media whether now known or hereafter developed (including without limitation in print, digital and electronic form) throughout the world, (b) to translate the Video into other languages, create adaptations, summaries or extracts of the Video or other Derivative Works or Collective Works based on all or any portion of the Video and exercise all of the rights set forth in (a) above in such translations, adaptations, summaries, extracts, Derivative Works or Collective Works and (c) to license others to do any or all of the above. The foregoing rights may be exercised in all media and formats, whether now known or hereafter devised, and include the right to make such modifications as are technically necessary to exercise the rights in other media and formats. For any Video to which this Section 6 is applicable, JoVE and the Author hereby grant to the public all such rights in the Video as provided in, but subject to all limitations and requirements set forth in, the CRC License.

7. Government Employees. If the Author is a United States government employee and the Article was prepared in the course of his or her duties as a United States government employee, as indicated in **Item 2** above, and any of the licenses or grants granted by the Author hereunder exceed the scope of the 17 U.S.C. 403, then the rights granted hereunder shall be limited to the maximum rights permitted under such

statute. In such case, all provisions contained herein that are not in conflict with such statute shall remain in full force and effect, and all provisions contained herein that do so conflict shall be deemed to be amended so as to provide to JoVE the maximum rights permissible within such statute.

8. Likeness, Privacy, Personality. The Author hereby grants JoVE the right to use the Author's name, voice, likeness, picture, photograph, image, biography and performance in any way, commercial or otherwise, in connection with the Materials and the sale, promotion and distribution thereof. The Author hereby waives any and all rights he or she may have, relating to his or her appearance in the Video or otherwise relating to the Materials, under all applicable privacy, likeness, personality or similar laws.

9. Author Warranties. The Author represents and warrants that the Article is original, that it has not been published, that the copyright interest is owned by the Author (or, if more than one author is listed at the beginning of this Agreement, by such authors collectively) and has not been assigned, licensed, or otherwise transferred to any other party. The Author represents and warrants that the author(s) listed at the top of this Agreement are the only authors of the Materials. If more than one author is listed at the top of this Agreement and if any such author has not entered into a separate Article and Video License Agreement with JoVE relating to the Materials, the Author represents and warrants that the Author has been authorized by each of the other such authors to execute this Agreement on his or her behalf and to bind him or her with respect to the terms of this Agreement as if each of them had been a party hereto as an Author. The Author warrants that the use, reproduction, distribution, public or private performance or display, and/or modification of all or any portion of the Materials does not and will not violate, infringe and/or misappropriate the patent, trademark, intellectual property or other rights of any third party. The Author represents and warrants that it has and will continue to comply with all government, institutional and other regulations, including, without limitation all institutional, laboratory, hospital, ethical, human and animal treatment, privacy, and all other rules, regulations, laws, procedures or guidelines, applicable to the Materials, and that all research involving human and animal subjects has been approved by the Author's relevant institutional review board.

10. JoVE Discretion. If the Author requests the assistance of JoVE in producing the Video in the Author's facility, the Author shall ensure that the presence of JoVE employees, agents or independent contractors is in accordance with the relevant regulations of the Author's institution. If more than one author is listed at the beginning of this Agreement, JoVE may, in its sole discretion, elect not take any action with respect to the Article until such time as it has received complete, executed Article and Video License Agreements from each such author. JoVE reserves the right, in its absolute and sole discretion and without giving any reason therefore, to accept or decline any work submitted to JoVE. JoVE and its employees, agents and independent contractors shall have

ARTICLE AND VIDEO LICENSE AGREEMENT

full, unfettered access to the facilities of the Author or of the Author's institution as necessary to make the Video, whether actually published or not. JoVE has sole discretion as to the method of making and publishing the Materials, including, without limitation, to all decisions regarding editing, lighting, filming, timing of publication, if any, length, quality, content and the like.

11. **Indemnification.** The Author agrees to indemnify JoVE and/or its successors and assigns from and against any and all claims, costs, and expenses, including attorney's fees, arising out of any breach of any warranty or other representations contained herein. The Author further agrees to indemnify and hold harmless JoVE from and against any and all claims, costs, and expenses, including attorney's fees, resulting from the breach by the Author of any representation or warranty contained herein or from allegations or instances of violation of intellectual property rights, damage to the Author's or the Author's institution's facilities, fraud, libel, defamation, research, equipment, experiments, property damage, personal injury, violations of institutional, laboratory, hospital, ethical, human and animal treatment, privacy or other rules, regulations, laws, procedures or guidelines, liabilities and other losses or damages related in any way to the submission of work to JoVE, making of videos by JoVE, or publication in JoVE or elsewhere by JoVE. The Author shall be responsible for, and shall hold JoVE harmless from, damages caused by lack of sterilization, lack of cleanliness or by contamination due to the making of a video by JoVE its employees, agents or independent contractors. All sterilization, cleanliness or decontamination procedures shall be solely the responsibility of the Author and shall be undertaken at the Author's


expense. All indemnifications provided herein shall include JoVE's attorney's fees and costs related to said losses or damages. Such indemnification and holding harmless shall include such losses or damages incurred by, or in connection with, acts or omissions of JoVE, its employees, agents or independent contractors.

12. **Fees.** To cover the cost incurred for publication, JoVE must receive payment before production and publication the Materials. Payment is due in 21 days of invoice. Should the Materials not be published due to an editorial or production decision, these funds will be returned to the Author. Withdrawal by the Author of any submitted Materials after final peer review approval will result in a US\$1,200 fee to cover pre-production expenses incurred by JoVE. If payment is not received by the completion of filming, production and publication of the Materials will be suspended until payment is received.

13. **Transfer, Governing Law.** This Agreement may be assigned by JoVE and shall inure to the benefits of any of JoVE's successors and assignees. This Agreement shall be governed and construed by the internal laws of the Commonwealth of Massachusetts without giving effect to any conflict of law provision thereunder. This Agreement may be executed in counterparts, each of which shall be deemed an original, but all of which together shall be deemed to be one and the same agreement. A signed copy of this Agreement delivered by facsimile, e-mail or other means of electronic transmission shall be deemed to have the same legal effect as delivery of an original signed copy of this Agreement.

A signed copy of this document must be sent with all new submissions. Only one Agreement required per submission.

CORRESPONDING AUTHOR:

Name:	Wang, Jie-Mei	
Department:	Center for Molecular Medicine and Genetics	
Institution:	Wayne State University	
Article Title:	Isolation and primary culture of mouse aortic endothelial cells	
Signature:		Date: 11/21/2014

Please submit a signed and dated copy of this license by one of the following three methods:

- 1) Upload a scanned copy of the document as a pdf on the JoVE submission site;
- 2) Fax the document to +1.866.381.2236;
- 3) Mail the document to JoVE / Attn: JoVE Editorial / 1 Alewife Center #200 / Cambridge, MA 02139

For questions, please email submissions@jove.com or call +1.617.945.9051

Response to Editor and reviewer's comments:

Editor:

1. Please take this opportunity to thoroughly proofread the manuscript to ensure that there are no spelling or grammar issues. The JoVE editor will not copy-edit your manuscript and any errors in the submitted revision may be present in the published version. Please watch for missing articles (a, an, the, etc.) as well as subject verb agreement. The manuscript would benefit from copyediting for grammar, as there are minor grammatical errors throughout.

Response: We had a native English speaker double checked the grammar and corrected the grammar mistakes in the manuscript.

2. Additional detail is required in a number of places:

-2.5: About how long are the segments incubated?

Response: We added "for 4 to 6 hours".

-3.3: What concentration of neutral proteinase?

Response: The concentration of neutral proteinase is 50 units/ml.

-4.6: Are the cells split between the two flasks from 4.1, or are they all plated in a single flask as indicated?

Response: Yes. The cells are split between the two flasks from 4.1.

3. References: Some DOI missing, journal titles are not abbreviated. JoVE reference format requires that DOIs are included, when available, for all references listed in the article. This is helpful for readers to locate the included references and obtain more information. Please note that often DOIs are not listed with PubMed abstracts and as such, may not be properly included when citing directly from PubMed. In these cases, please manually include DOIs in reference information.

Response: We added those missing DOIs into the references.

Reviewer #1:

Minor Concerns:

On Figure 1, it appears that angiogenesis is present. Capillary like structures are visible. In older literature this approach was used to study angiogenesis in vitro. The authors should comment on this phenomenon. Is it important to harvest cells before formation of capillary-like structures?

Response: We agree that this approach is used to study angiogenesis in vitro and the formation of capillary like structure indicates angiogenesis capacity of the aorta segment. Based on our experience, if we remove the segments after the capillary like structure fully develops, the incidences of smooth muscle cells contamination increase dramatically. So we feel that the best time point to remove the segment is when the network starts to be visible but not developed. In this way, we are able to harvest as many as endothelial cells while keeping the contamination by smooth muscle cells to minimum. We rephrased the protocol and put this comment into the discussion.

It would be also good to provide additional endothelial marker like eNOS.

Response: Thank you very much for your suggestion. We added the staining for additional endothelial marker eNOS.

Reviewer #2:

1. The authors used Dil-ac-LDL uptake, Lectin binding, and CD31 staining to characterize the endothelial cells, which is fine. However, it would further strengthen the manuscript if the authors can expand their discussion to include other phenotypical characteristics of endothelial cells, such as other surface antigen expression (i.e. vWF factor, CD144), functional genes (i.e. eNOS, VEGFR) and assessments (tube formation, etc).

Response: Thank you very much for the advices. We added discussion about endothelial cell characteristics in the manuscript.

2. Long abstract, line 5: The sentence "the thoracic aorta is quickly removed the mouse body" is confusion. Please rephrase.

Response: We rephrase the sentence to be "the thoracic aorta is quickly removed from the mouse body".

3. Page 10, line 32: Please remove "that".

Response: We removed "that".

4. Page 11, line 341: Please remove "a".

Response: We removed "a".

Reviewer #3:

1. To characterize the cultured cells, the authors are recommending to use fluorescence. They are currently suggest a specific wavelength (i.e. 519 nm for green fluorescence), but they may include a mentioning that an appropriate wavelength can be used (i.e 518-535 nm according to the instrument).

Response: Thank you very much for the suggestion. We replaced "519 nm" for "518-535nm" in the revised manuscript.

Reviewer #4:

1. Manuscript has not been written well since there are numerous grammar problems inside. Please have the native English speaker check the grammar.

Response: Thank you for the suggestion. We had a native English speaker double checked the grammar and corrected the grammar mistakes in the manuscript.

2. This method is actually a explant method for isolating vascular cells. People normally apply this method to isolate vascular smooth muscles (VSMCs). As the author claimed in the manuscript, the contamination of other cell types cannot be excluded. Although the time to remove the aortic ring is the key, VSMCs start to expand from the ring at day3. Thus, the chance of the VSMC contamination is probably very high. It is necessary to provide the staining for VSMC maker such as smooth muscle actin or calponin to ascertain if there are VSMCs.

Response: Thank you for your comments. Yes, people use this method to isolate vascular smooth muscle cells, except that there are two important differences: 1) In the culture of VSMCs, the endothelium layer is mechanically removed before the segments are seeded onto the matrix. In this protocol, every effort is made to ensure that

endothelium is intact, viable, and the endothelium has maximum chance to attach to the matrix, e.g. using PBS containing heparin to stable the endothelial cells, avoiding stretching when isolating the aorta, opening up the aortic ring and having the endothelial side facing down. 2) In the culture of VSMCs, the segments are kept in VSMC favoring culture medium, while in the culture of endothelial cells, the segments are kept in endothelial cell-favoring culture medium. However, we also agree that the above mentioned efforts cannot completely exclude the contamination of smooth muscle cells. We added the staining for calponin as suggested. In our experiment we observed that most of the cells were negative for calponin.

3. The authors only provided CD31 staining to characterize EC, please examine other EC specific gene expression such as VEGFR2, eNOS and VE-Cadherin for further confirmation.

Response: Thank you very much for the suggestion. We added the staining for VEGFR2, eNOS and VE-Cadherin in the revised manuscript.