

# Journal of Visualized Experiments

## Failure analysis of batteries using synchrotron-based hard X-ray microtomography --Manuscript Draft--

<b>Manuscript Number:</b>	JoVE53021R2
<b>Full Title:</b>	Failure analysis of batteries using synchrotron-based hard X-ray microtomography
<b>Article Type:</b>	Invited Methods Article - JoVE Produced Video
<b>Keywords:</b>	Lithium-ion batteries; Lithium dendrite growth; Polymer electrolytes; X-ray microtomography; Electrochemistry; X-ray imaging
<b>Manuscript Classifications:</b>	92.23: Chemistry and Materials (General)
<b>Corresponding Author:</b>	Katherine Harry, Ph.D. candidate University of California Berkeley Berkeley, CA UNITED STATES
<b>Corresponding Author Secondary Information:</b>	
<b>Corresponding Author E-Mail:</b>	kharry@berkeley.edu
<b>Corresponding Author's Institution:</b>	University of California Berkeley
<b>Corresponding Author's Secondary Institution:</b>	
<b>First Author:</b>	Katherine Harry, Ph.D. candidate
<b>First Author Secondary Information:</b>	
<b>Other Authors:</b>	Dilworth Y. Parkinson Nitash P. Balsara
<b>Order of Authors Secondary Information:</b>	
<b>Abstract:</b>	Imaging morphological changes that occur during the lifetime of rechargeable batteries is necessary to understand how these devices fail. Since the advent of lithium-ion batteries, researchers have known that the lithium metal anode has the highest theoretical energy density of any anode material. However, rechargeable batteries containing a lithium metal anode are not widely used in consumer products because the growth of lithium dendrites from the anode upon charging of the battery causes premature cell failure by short circuit. Lithium dendrites can also form in commercial lithium-ion batteries with graphite anodes if they are improperly charged. We demonstrate that lithium dendrite growth can be studied using synchrotron-based hard X-ray microtomography. This non-destructive imaging technique allows researchers to study the growth of lithium dendrites, in addition to other morphological changes inside batteries, and subsequently develop methods to extend battery life.
<b>Author Comments:</b>	
<b>Additional Information:</b>	
<b>Question</b>	<b>Response</b>
If this article needs to be "in-press" by a certain date to satisfy grant requirements, please indicate the date below and explain in your cover letter.	
If this article needs to be filmed by a certain date to due to author/equipment/lab availability, please indicate the date below and explain in your cover letter.	

## UNIVERSITY OF CALIFORNIA, BERKELEY

BERKELEY • DAVIS • IRVINE • LOS ANGELES • MERCED • RIVERSIDE • SAN DIEGO • SAN FRANCISCO



SANTA BARBARA • SANTA CRUZ

Professor Nitash P. Balsara  
Department of Chemical and Biomolecular Engineering

201-C Gilman Hall  
University of California  
Berkeley, CA 94720-1462

Phone: (510) 642-8973  
Fax: (510) 642-4778

December 5, 2014

Dear Editor,

Please find our manuscript entitled "**Failure analysis of batteries using synchrotron-based hard X-ray microtomography**" by Katherine J. Harry, Dilworth Y. Parkinson, and Nitash P. Balsara enclosed.

Next-generation, rechargeable battery chemistries promise theoretical energy densities of over an order of magnitude larger than traditional lithium-ion batteries. However, these new chemistries require the use of a lithium metal anode in order to achieve these large improvements in energy density. Unfortunately, when the conventional graphite anode is replaced with a lithium metal anode the battery becomes prone to premature failure by short-circuit. This happens because lithium dendrites grow from the lithium metal anode as the battery is charged. Eventually the dendrites grow large enough to puncture the electrolyte and short the cell.

The procedure discussed in the enclosed manuscript describes a technique that allows researchers to easily visualize microstructural changes, like dendrite growth, that occur inside of a battery as it is cycled. While the procedure is specific to electrochemical cells with lithium metal electrodes and a solid polymer electrolyte, it can be extended to study a wide variety of battery chemistries and assemblies. Hard X-ray microtomography is a valuable diagnostic tool for monitoring micron-scale morphological changes in electrochemical systems and, hopefully, a video showing our procedure for preparing and imaging these samples will make it easier for other researchers to use this technique in their own studies.

In our study, the growth of lithium dendrites through high-modulus block copolymer electrolyte membranes is observed. The penetrating X-rays reveal structures within the electrode that are typically hidden when imaging with traditional electron or optical microscopy. These images have given us insight into the mechanism of lithium dendrite growth and enable us to propose rational approaches to slow or eliminate dendrite growth.

Yours sincerely,

*Nitash P. Balsara*

Nitash P. Balsara  
Professor  
University of California, Berkeley  
Department of Chemical Engineering  
Phone: (510) 642-8973  
Email: [nbalsara@cchem.berkeley.edu](mailto:nbalsara@cchem.berkeley.edu)

**Author contributions**

Katherine J. Harry: Composed manuscript and performed experiments.

Dilworth Y. Parkinson: Beamline scientist who aided in the experimental design.

Nitash P. Balsara: Principle investigator who helped with experimental design.

**JoVE editor**

Eric Veien

**Suggested reviewers**

Dr. Vanessa Wood: wood@iis.ee.ethz.ch

Dr. Clare Grey: cpg27@cam.ac.uk

Dr. Anthony Ryan: pvcscience@sheffield.ac.uk

Dr. Kevin Gallagher: kevin.gallagher@anl.gov

Dr. Timothy Lodge: lodge@umn.edu

Dr. Karim Zaghib: zaghib.karim@ireq.ca

**TITLE:**

Failure analysis of batteries using synchrotron-based hard X-ray microtomography

**AUTHORS:**

Harry, Katherine J.  
Department of Materials Science and Engineering  
University of California Berkeley  
Berkeley, United States  
[kharry@berkeley.edu](mailto:kharry@berkeley.edu)

Parkinson, Dilworth Y.  
Advanced Light Source Division  
Lawrence Berkeley National Laboratory  
Berkeley, United States  
[dyparkinson@lbl.gov](mailto:dyparkinson@lbl.gov)

Balsara, Nitash P.  
Department of Chemical and Biomolecular Engineering  
University of California Berkeley  
Berkeley, United States  
[nbalsara@cchem.berkeley.edu](mailto:nbalsara@cchem.berkeley.edu)

**CORRESPONDING AUTHOR:**

Nitash P. Balsara, Ph.D.

**KEYWORDS:**

Lithium-ion batteries, lithium dendrite growth, polymer electrolytes, X-ray microtomography, electrochemistry, X-ray imaging

**SHORT ABSTRACT:**

Synchrotron-based hard X-ray microtomography is used to image the electrochemical growth of dendrites from a lithium metal electrode through a solid polymer electrolyte membrane.

**LONG ABSTRACT:**

Imaging morphological changes that occur during the lifetime of rechargeable batteries is necessary to understand how these devices fail. Since the advent of lithium-ion batteries, researchers have known that the lithium metal anode has the highest theoretical energy density of any anode material. However, rechargeable batteries containing a lithium metal anode are not widely used in consumer products because the growth of lithium dendrites from the anode upon charging of the battery causes premature cell failure by short circuit. Lithium dendrites can also form in commercial lithium-ion batteries with graphite anodes if they are improperly charged. We demonstrate that lithium dendrite growth can be studied using synchrotron-based hard X-ray microtomography. This non-destructive imaging technique allows researchers to study the growth of lithium dendrites, in addition to other morphological changes inside batteries, and subsequently develop methods to extend battery life.

## INTRODUCTION:

Researchers are actively investigating battery chemistries with theoretical energy densities over an order of magnitude larger than traditional lithium-ion batteries.<sup>1,2</sup> These high-energy-density batteries will make electric vehicles more competitive with their gasoline-powered counterparts.<sup>3</sup> However, these new chemistries have several failure modes that preclude their use in commercial technologies. For example, these battery chemistries require a lithium metal anode to achieve large enhancements in energy density; unfortunately, lithium metal is prone to dendrite growth as lithium ions are reduced at the anode surface during charging.<sup>4-9</sup> Additionally, breakage of active particles in the cathode and poor adhesion within the battery can cause cell failure.<sup>10</sup>

Many modes of battery failure occur on the micrometer scale. However, most battery materials are air sensitive making sample preparation for analysis by electron microscopy and traditional optical microscopy difficult. Synchrotron hard X-ray microtomography allows one to visualize the interior of a battery without disassembly.<sup>11-14</sup> Furthermore, the technique produces a three-dimensional (3D) reconstruction of the assembled cell making it easy to find locations of failure.<sup>15</sup> Finding robust techniques that enable researchers to develop the scientific understanding required to accurately predict the lifetime of a battery is critical for the design of next generation battery technologies. The procedure discussed herein will specifically demonstrate how one can prepare and image model batteries to study the growth of lithium metal dendrites through solid polymer electrolyte membranes.

Computed tomography (CT) scanning is not a new technique and has been used frequently for failure analysis in industry. Synchrotron-based X-ray microtomography is advantageous because the high brightness and flux of the source allow collection of images with high resolution and good signal to noise in a much shorter amount of time.<sup>16</sup> Additionally, one can take advantage of the X-ray energy resolution to image at energies around a chemical species' absorption edge, causing the components containing that chemical species to be identified.<sup>17</sup> It was found that the synchrotron source provides sufficient flux to achieve good contrast between lithium metal and solid polymer electrolyte membranes enabling one to image lithium metal dendrites.<sup>15</sup>

The study discussed herein uses a high modulus, block copolymer electrolyte membrane.<sup>18</sup> These high modulus membranes suppress lithium dendrite growth, lengthening the lifetime of batteries.<sup>19,20</sup> However, dendrites still eventually puncture the membrane causing the battery to fail by short-circuit. It is important to understand the nature of dendrite formation and growth in these high modulus electrolyte membranes in order to design strategies to prevent their growth.

## PROTOCOL:

### 1. Electrolyte preparation:

1.1) Synthesize a 240 kg/mol – 260 kg/mol poly(styrene) - *block* - poly(ethylene oxide) copolymer (SEO) using anionic polymerization.

1.1.1) Perform all additional sample preparation in an Argon glovebox where the water and oxygen levels are controlled and remain <5 ppm.

1.1.2) Dissolve 0.3 g of polymer in anhydrous N-methyl-2-pyrrolidone (NMP) with dry lithium bis(trifluoromethane)sulfonimide (LiTFSI) salt. Use a LiTFSI salt to SEO mass ratio of 0.275 and an NMP to SEO mass ratio of 13.13.

Note: This quantity of polymer will yield a membrane large enough to make approximately 20 samples.

1.1.3) Cast all of the polymer and salt mixture prepared in the steps above onto an approximately 15 cm by 15 cm square piece of nickel foil using a doctor blade. Dry the resulting film at 60 °C overnight.

1.1.4) After drying, peel the film from the Nickel foil and allow to dry further under vacuum at 90 °C.

1.1.5) Wrap the resulting freestanding film in Nickel foil and store inside an air-tight box in the glovebox for later use.

## **2. Lithium – lithium symmetric cell preparation**

2.1) Use a 7/16 inch diameter, round metal punch to cut out two lithium metal electrodes from a roll of 99.9% pure, battery-grade lithium metal foil.

2.2) Use a 1/2 inch diameter metal punch to cut out a piece of polymer electrolyte film.

Note: The lithium metal is softer and easier to punch than the polymer electrolyte.

2.3) Sandwich the polymer electrolyte film between the two lithium metal electrodes and press the nickel tabs onto the electrodes.

2.4) Vacuum seal the sample in an air-tight pouch made of polypropylene and nylon lined aluminum.

Note: One of the lithium electrodes is easily swapped with a cathode if one wants to study a full battery.

## **3. Symmetric cell cycling:**

3.1) Place the vacuum-sealed sample into an oven held at 90 °C and cycle using electrochemical cycling equipment. Heat the sample during cycling to achieve reasonable ionic conductivity through the electrolyte membrane. For safety, ensure that the sample does not approach the lithium metal melting point of 180 °C.

3.2) Pass a current density of 0.175 mA/cm<sup>2</sup> through the sample for four hours and follow with a 45 minute rest. Next, pass a current density of -0.175 mA/cm<sup>2</sup> through the sample for four hours and follow with a 45 minute rest. Repeat this cycling routine as many times as desired.

3.3) Observe the voltage response for this current density passed through a 30  $\mu\text{m}$  thick SEO electrolyte and compare with that shown in **Figure 1**. Stop the cycling routine when the cell voltage response drops to 0.00 V, because the battery has failed by short-circuit indicating the growth of lithium dendrites.

#### **4. Synchrotron hard X-ray microtomography imaging:**

4.1) After the symmetric cell is cycled, bring it back into the glove box and remove it from its pouch.

4.2) Use a 1/8 inch metal punch to cut out the center portion of the cell. Vacuum seal the center portion of the cell in pouch material and remove from the glovebox for transport to the synchrotron facility.

Note: By imaging a sample with a reduced diameter, the amount of material outside of the field of view of the X-ray detector is reduced. This improves the overall image quality by reducing noise caused by this extra material. Furthermore, removal of the highly X-ray absorptive Nickel current collectors is necessary, for this particular pouch design, to obtain clear X-ray images.

4.3) Once at the beamline, use polyimide tape to affix the sample to the sample stage. If desired, tape a small metal marker on top of the sample to aid with alignment. Place the metal marker roughly in the center of the sample to mark the location around which the sample will rotate once aligned.

4.4) Use 20 keV X-rays to image the sample with an exposure time optimized for the system. Optimize the exposure time by balancing the scan time and the number of counts per image. Estimate the total scan time by multiplying the exposure time by the number of images collected.

4.4.1) Here, use an exposure time of 300 ms, resulting in a scan time of 5 to 10 minutes.

4.5) Measure the pixel size associated with the optical lenses at the beginning of every beamtime shift.

Note: For the 4x lens used to take the image shown in Figure 2, the pixel size was 1.61  $\mu\text{m}/\text{pixel}$ . Higher magnification lenses (10x and 20x) are also available for use.

4.6) Position and align the sample on a rotation stage with respect to the detection system so that it remains in the detector's field of view as it rotates through 180°.

4.7) Position the sample as close to the detector as is possible while ensuring that the sample does not hit the detector at any rotation angle.

Note: As the sample to detector distance increases, the Fresnel phase contrast will become more pronounced in the reconstructed images. This can obscure features and result in poorer resolution. For pouch cells, the sample to detector distance is typically on the order of 3 cm away from the detector.

4.8) Once aligned, perform a scan consisting of 1025 images collected over sample rotations between 0 and 180°. Collect “Bright field” (also known as “flat field” or “background”) images by moving the sample out of the field of view. Additionally, collect “dark field” images by taking images while the beam is off. Use these to normalize the sample images for inhomogeneous illumination, scintillator response, and CCD camera response.

## **5. Image Reconstruction**

5.1) Tomographically reconstruct the set of 1025 radiographs into a stack of images where each image represents a slice in the volume using the following procedure.

5.1.1) First, normalize the images by subtracting the “dark field” images from both the radiograph images and the “bright field” images. Divide the resulting radiograph images divided by the resulting “bright field” images.

5.1.2) Next, perform tomographic reconstruction, the process by which the series of projection angles is transformed into a 3D image, on the normalized radiograph images according to manufacturer’s protocol.

Note: The reconstruction software outputs a series of images, each representing a horizontal slice through the sample. When stacked, this set of reconstructed images form a three-dimensional X-ray absorption map of the sample.

5.2) Visualize the individual slices or the sample in three-dimensions to see what the sample looks like on the inside.

## **6. Data visualization and processing**

6.1) Use one of a multitude of commercial and open source image processing software packages available for data visualization and analysis.<sup>22, 23</sup>

6.2) Upon opening the stack of reconstructed images with the desired software, create orthoslices to show the xy, xz, and yz perspectives of the reconstructed data.

6.3) Pan through these images and search for features of interest, like the lithium dendrite shown in Figure 2.

6.4) Next, use segmentation (digital labeling) and 3D rendering tools to render the feature of interest in three-dimensions.

6.5) To digitally segment the image, create a label field and use thresholding tools to select regions of the sample corresponding to a material.



6.6) To recreate an image like that shown in Figure 2b, label the dark pixels lithium and the bright pixels electrolyte. Label the lithium contained in the dendrite separately from the top and bottom lithium electrodes.

6.6.1) Render the dendritic lithium in orange and the polymer electrolyte in blue. Render the top and bottom lithium metal electrodes in gray and adjust the transparency value to reveal the orange dendritic lithium. Rotate this three-dimensional reconstruction to view the structure from many perspectives.

### REPRESENTATIVE RESULTS:

When the symmetric lithium-lithium cells described above are cycled at 90 °C, the voltage response looks like that shown in **Figure 1**. Eventually, lithium dendrites will grow through the electrolyte and cause the cell to fail by short circuit. When this happens, the voltage response to the applied current will drop down to 0.00 V. Dendrites, like the one shown in **Figure 2** appear in samples that have failed by short circuit. Non-electrolyte spanning dendrites are also found in the samples. Using this method, one can study the evolution of dendrite growth as a function of the cell's stage of life by imaging a series of samples cycled to various stages of life as discussed in reference 15. The dendrite morphology and size can be easily measured from the three-dimensional reconstructed images. Additionally, this technique allows the user to see structures that lie inside of the lithium metal electrode. These features are hidden when one uses other imaging techniques, like scanning electron microscopy or traditional optical microscopy.

Typical microtomography images taken of a symmetric lithium-lithium sample with a solid polymer electrolyte membrane and a schematic of the instrument used to obtain the data are shown in **Figure 2**. An example of a radiograph image is shown in **Figure 2a**. Once a series of radiographs are collected from many angles, the radiographs are reconstructed into a stack of image files. These reconstructed image files are cross-sectional slices through the sample and can be viewed with open source software like ImageJ,<sup>23</sup> or commercial software like Avizo.<sup>22</sup> **Figure 2b** shows an example of a cross-sectional slice taken from the stack of reconstructed images. This symmetric cell was cycled until it failed by electronic short-circuit. From the reconstructed images, it is apparent that the majority of the lithium metal electrode interface is featureless. However, one finds globular lithium dendrites extending through the solid polymer electrolyte membrane like that shown in the 3D rendering in **Figure 2c**. The globular features in the polymer electrolyte in **Figure 2c** are shrouded by the electrolyte itself. In contrast, the uniform character of the globular dendrite is clearly seen in the cross-section (**Figure 2b**). It is, perhaps, interesting to note that the radiograph image in **Figure 2a** has much less noise than the reconstructed slice shown in **Figure 2b**. The main advantage of the reconstruction is the clarity with which the dendritic structure can be seen; the dendritic structure cannot be discerned in **Figure 2a**.

**Figure 1: Chronopotentiometry.** Representative cycling data for a lithium metal symmetric cell with a solid polymer electrolyte is shown. When a current density of 0.175 mA/cm<sup>2</sup> is applied to the cell, it responds with a voltage around 0.07 V. An alternating positive and negative current is applied to the cell to simulate the conditions of a battery charging and discharging. The sample rests for 45 minutes between each 4 hour charge and discharge.

**Figure 2: X-ray microtomography.** Synchrotron hard X-ray microtomography is used to image

a symmetric lithium cell that was cycled and failed by short circuit. **a** A radiograph image of the sample shows a dark polymer electrolyte band sandwiched between two lithium metal electrodes. The pouch material also appears in the image. **b** A cross-section slice through the reconstructed tomogram containing a lithium dendrite is shown. After reconstruction, the polymer electrolyte appears as a bright band sandwiched between two dark lithium metal electrodes. The pouch material also appears in the image. **c** Image segmentation was used to make a three-dimensional rendering of features in the sample. The dark, globular lithium metal dendrite is rendered in orange, so that the viewer can see its structure, while the bright, polymer electrolyte is rendered in purple. The top and bottom lithium metal electrodes are rendered transparent so they do not obscure the polymer electrolyte and the dendrite. **d** A schematic of the sample setup for X-ray microtomography experiments is shown.

## DISCUSSION:

Hard X-ray microtomography is especially well-suited for air-sensitive samples, like many electrochemically active materials, since the X-rays can penetrate through protective pouch material, enabling facile imaging of the sample without exposure to air. Perhaps the most valuable characteristic of this imaging technique is that the penetrating X-rays allow the user to see inside of the sample without destroying it. Most common imaging techniques, like scanning electron microscopy and traditional optical microscopy, can only image the surface of the electrodes. As such, many morphological changes that occur beneath the surface are hidden. X-ray imaging, however, allows the user to easily monitor the sample interior.

The theoretical resolution of this technique is less than a micrometer, but practical resolution is limited by absorption contrast and image noise. Also, the distance between the imaged region of the sample and the detection system impacts the resolution. Depending on the size of the pouch, the detection system is often 1-5 cm away from the central portion of the pouch, which contains the imaged material. This distance limits the resolution of the scan, both due to the rise of phase contrast artifacts with increasing distance, but also due to geometric blurring. Furthermore, the pixel size, determined by the magnification of the lens, will clearly influence the achievable resolution. X-ray absorption is a function of the atomic scattering factor, incident beam wavelength, and sample dimensions.<sup>24</sup> Roughly speaking, in the hard X-ray regime, the larger the atom, the more X-ray absorption occurs. Therefore, when imaging lithium dendrites, one can differentiate between lithium metal and the polymer electrolyte because the carbon-based electrolyte is more X-ray absorptive than lithium metal. Next, one must consider image noise. If the sample contains components made of large atoms, like nickel, a high percentage of the 20 keV X-rays will be absorbed by those components. If the majority of the X-rays are absorbed by these heavy components, the contrast between components made of lighter elements, like carbon and lithium, becomes negligible. We thus removed the nickel tabs from the cell before imaging.

The most critical step of the protocol is ensuring that the sample is designed in such a way that heavy metals like Nickel do not block the beam trajectory during imaging. The protocol described above is for ex-situ imaging, and while less destructive than TEM or SEM imaging, still requires the sample to be destroyed. Efforts to create samples for *in situ* imaging by altering the position of the current collectors so that they do not block the path of the beam are currently underway.

To conclude, X-ray microtomography is a valuable tool for studying morphological changes in electrochemically active systems. Since the image resolution is limited to the micrometer scale,

complementary experiments using traditional electron microscopy can help to clarify morphological changes on smaller length scales. Furthermore, some spectroscopic information can be obtained from this technique by taking images above and below the absorption edge of the element to be identified. Components in the sample containing that element will show a large change in contrast when the images are compared. However, this only works if the experimenter knows what element they wish to identify. Therefore, complementary spectroscopic techniques like Energy-dispersive X-ray spectroscopy would be necessary to identify unknown components in a sample. Using this tool, we were able to study the formation and growth of lithium dendrites through high modulus polymer electrolyte membranes.<sup>15</sup> We expect that the technique can be extended to study many micron-scale morphological changes that may occur upon cycling an electrochemical cell.

#### **DISCLOSURES:**

The authors have nothing to disclose.

#### **ACKNOWLEDGMENTS:**

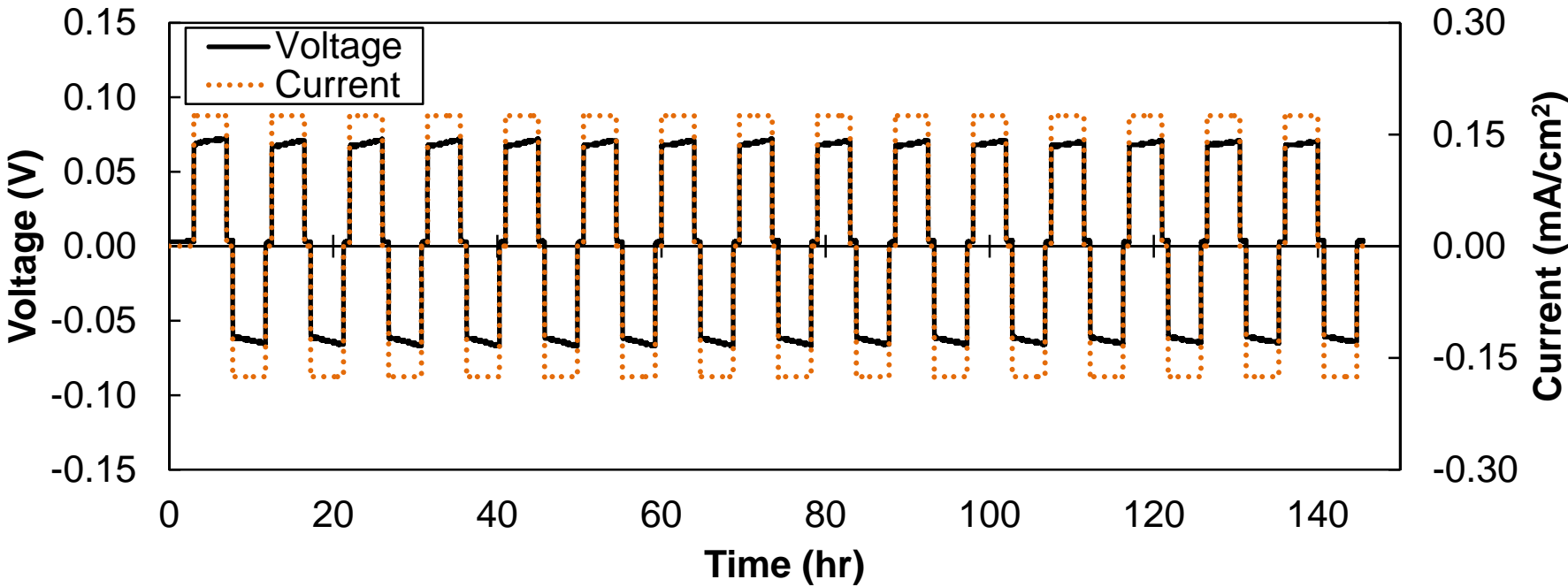
Primary funding for the work was provided by the Electron Microscopy of Soft Matter Program from the Office of Science, Office of Basic Energy Sciences, Materials Sciences and Engineering Division of the U.S. Department of Energy under Contract No. DE-AC02-05CH11231. The battery assembly portion of the project was supported by the BATT program from the Vehicle Technologies program, through the Office of Energy Efficiency and Renewable Energy under U.S. DOE Contract DE-AC02-05CH11231. Hard X-ray microtomography experiments were performed at the Advanced Light Source which is supported by the Director, Office of Science, Office of Basic Energy Sciences, of the U.S. Department of Energy under Contract No. DE-AC02-05CH11231. Katherine J. Harry was supported by a National Science Foundation Graduate Research Fellowship.

#### **REFERENCES:**

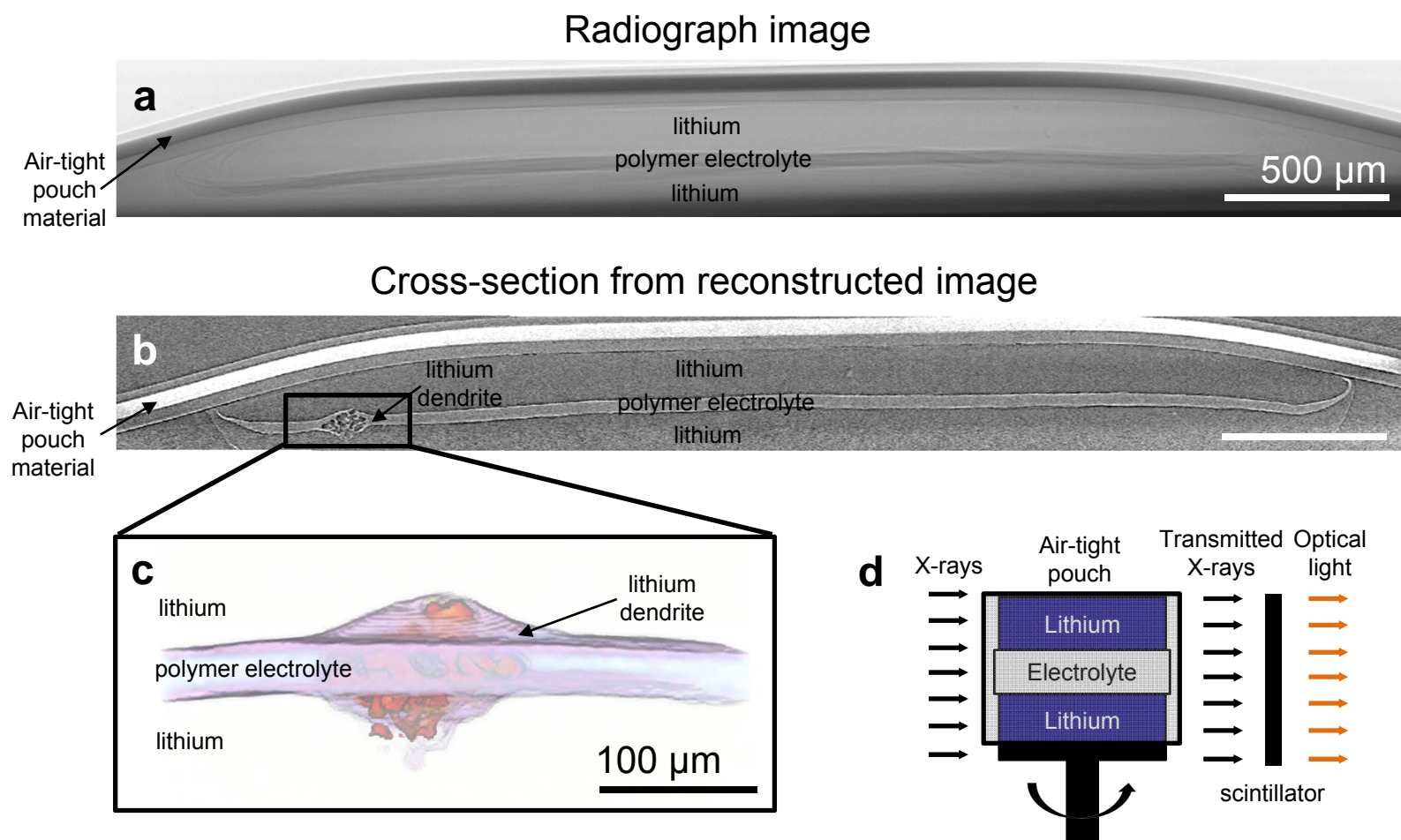
- 1 Bruce, P. G., Freunberger, S. A., Hardwick, L. J. & Tarascon, J. M. Li-O<sub>2</sub> and Li-S batteries with high energy storage. *Nat Mater* **11**, 19-29, doi: 10.1038/Nmat3191 (2012).
- 2 Balsara, N. P. & Newman, J. Comparing the Energy Content of Batteries, Fuels, and Materials. *J Chem Educ* **90**, 446-452, doi: 10.1021/Ed3004066 (2013).
- 3 Girishkumar, G., McCloskey, B., Luntz, A. C., Swanson, S. & Wilcke, W. Lithium - Air Battery: Promise and Challenges. *J Phys Chem Lett* **1**, 2193-2203, doi: 10.1021/Jz1005384 (2010).
- 4 Selim, R. & Bro, P. Some observations on rechargeable lithium electrodes in a propylene carbonate electrolyte. *J Electrochem Soc* **121**, 1457-1459 (1974).
- 5 Aurbach, D., Zinigrad, E., Cohen, Y. & Teller, H. A short review of failure mechanisms of lithium metal and lithiated graphite anodes in liquid electrolyte solutions. *Solid State Ionics* **148**, 405-416, doi: Pii S0167-2738(02)00080-2 doi: 10.1016/S0167-2738(02)00080-2 (2002).
- 6 Monroe, C. & Newman, J. Dendrite Growth in Lithium/Polymer Systems. *J Electrochem Soc* **150**, A1377, doi: 10.1149/1.1606686 (2003).
- 7 Barton, J. L. & Bockris, J. O. The Electrolytic Growth of Dendrites from Ionic Solutions. *Proc R Soc Ser A* **268**, 485-505, doi: 10.1098/rspa.1962.0154 (1962).
- 8 Bhattacharyya, R. *et al.* In situ NMR observation of the formation of metallic lithium microstructures in lithium batteries. *Nat Mater* **9**, 504-510 (2010).

- 9 Chandrashekar, S. *et al.*  $^7\text{Li}$  MRI of Li batteries reveals location of microstructural lithium. *Nat Mater* **11**, 311-315 (2012).
- 10 Arora, P., White, R. E. & Doyle, M. Capacity fade mechanisms and side reactions in lithium-ion batteries. *J Electrochem Soc* **145**, 3647-3667, doi: 10.1149/1.1838857 (1998).
- 11 Ebner, M., Marone, F., Stampanoni, M. & Wood, V. Visualization and Quantification of Electrochemical and Mechanical Degradation in Li Ion Batteries. *Science* **342**, 716-720, doi: 10.1126/science.1241882 (2013).
- 12 Qi, Y. & Harris, S. J. In Situ Observation of Strains during Lithiation of a Graphite Electrode. *J Electrochem Soc* **157**, A741-A747, doi: 10.1149/1.3377130 (2010).
- 13 Eastwood, D. S. *et al.* Three-dimensional characterization of electrodeposited lithium microstructures using synchrotron X-ray phase contrast imaging. *Chem Commun* (2014).
- 14 Shui, J.-L. *et al.* Reversibility of anodic lithium in rechargeable lithium-oxygen batteries. *Nat commun* **4** (2013).
- 15 Harry, K. J., Hallinan, D. T., Parkinson, D. Y., MacDowell, A. A. & Balsara, N. P. Detection of subsurface structures underneath dendrites formed on cycled lithium metal electrodes. *Nat Mater* **13**, 69-73, doi: 10.1038/Nmat3793 (2014).
- 16 Baruchel, J. *et al.* Advances in synchrotron hard X-ray based imaging. *Cr Phys* **9**, 624-641, doi: 10.1016/j.crhy.2007.08.003 (2008).
- 17 Flannery, B. P., Deckman, H. W., Roberge, W. G. & D'Amico, K. L. Three-Dimensional X-ray Microtomography. *Science* **237**, 1439-1444, doi: 10.1126/science.237.4821.1439 (1987).
- 18 Singh, M. *et al.* Effect of molecular weight on the mechanical and electrical properties of block copolymer electrolytes. *Macromolecules* **40**, 4578-4585, doi: 10.1021/Ma0629541 (2007).
- 19 Monroe, C. & Newman, J. The Impact of Elastic Deformation on Deposition Kinetics at Lithium/Polymer Interfaces. *J Electrochem Soc* **152**, A396, doi: 10.1149/1.1850854 (2005).
- 20 Stone, G. M. *et al.* Resolution of the Modulus versus Adhesion Dilemma in Solid Polymer Electrolytes for Rechargeable Lithium Metal Batteries. *J Electrochem Soc* **159**, A222-A227, doi: 10.1149/2.030203jes (2012).
- 21 Panday, A. *et al.* Effect of Molecular Weight and Salt Concentration on Conductivity of Block Copolymer Electrolytes. *Macromolecules* **42**, 4632-4637, doi: 10.1021/Ma900451e (2009).
- 22 FEI Company. Avizo v.8.1 (Hillsboro, Oregon, 2014).
- 23 Schneider, C. A., Rasband, W. S. & Eliceiri, K. W. NIH Image to ImageJ: 25 years of image analysis. *Nat methods* **9**, 671-675 (2012).
- 24 Henke, B. L., Gullikson, E. M. & Davis, J. C. X-Ray Interactions - Photoabsorption, Scattering, Transmission and Reflection at E=50-30,000 Ev, Z=1-92 (Vol 54, Pg 181, 1993). *Atom Data Nucl Data* **55**, 349-349 (1993).

# Representative cycling data



# X-ray microtomography imaging



Name of Reagent/ Equipment	Company	Catalog Number	Comments/Description
Anhydrous N-methyl-2-pyrrolidone	MILLIPORE	MX1396-7	
Lithium bis(trifluoromethane)sulfonamide	MILLIPORE	8438730010	
Lithium metal	FMC Lithium	None	Lectro Max 100
Pouch material	MTI Corporation	EQ-alf-400-7.5M	
Nickel tabs	MTI Corporation	EQ-PLiB-NTA3	





1 Alewife Center #200  
Cambridge, MA 02140  
tel. 617.945.9051  
www.jove.com

## ARTICLE AND VIDEO LICENSE AGREEMENT

Title of Article: Failure Analysis of Batteries using synchrotron-based hard X-ray microtomography  
Author(s): Katherine J. Harty, Dilworth Y. Parkinson, Nitash P. Balsara

Item 1 (check one box): The Author elects to have the Materials be made available (as described at <http://www.jove.com/publish>) via: ☒ Standard Access ☐ Open Access

Item 2 (check one box):

- ☐ The Author is NOT a United States government employee.  
☒ The Author is a United States government employee and the Materials were prepared in the course of his or her duties as a United States government employee.  
☐ The Author is a United States government employee but the Materials were NOT prepared in the course of his or her duties as a United States government employee.

### ARTICLE AND VIDEO LICENSE AGREEMENT

1. **Defined Terms.** As used in this Article and Video License Agreement, the following terms shall have the following meanings: "Agreement" means this Article and Video License Agreement; "Article" means the article specified on the last page of this Agreement, including any associated materials such as texts, figures, tables, artwork, abstracts, or summaries contained therein; "Author" means the author who is a signatory to this Agreement; "Collective Work" means a work, such as a periodical issue, anthology or encyclopedia, in which the Materials in their entirety in unmodified form, along with a number of other contributions, constituting separate and independent works in themselves, are assembled into a collective whole; "CRC License" means the Creative Commons Attribution-Non Commercial-No Derivs 3.0 Unported Agreement, the terms and conditions of which can be found at: <http://creativecommons.org/licenses/by-nc-nd/3.0/legalcode>; "Derivative Work" means a work based upon the Materials or upon the Materials and other pre-existing works, such as a translation, musical arrangement, dramatization, fictionalization, motion picture version, sound recording, art reproduction, abridgment, condensation, or any other form in which the Materials may be recast, transformed, or adapted; "Institution" means the institution, listed on the last page of this Agreement, by which the Author was employed at the time of the creation of the Materials; "JoVE" means MyJoVE Corporation, a Massachusetts corporation and the publisher of *The Journal of Visualized Experiments*; "Materials" means the Article and / or the Video; "Parties" means the Author and JoVE; "Video" means any video(s) made by the Author, alone or in conjunction with any other parties, or by JoVE or its affiliates or agents, individually or in collaboration with the Author or any other parties, incorporating all or any portion of the Article, and in which the Author may or may not appear.

2. **Background.** The Author, who is the author of the Article, in order to ensure the dissemination and protection of the Article, desires to have the JoVE publish the Article and create and transmit videos based on the Article. In furtherance of such goals, the Parties desire to memorialize in this Agreement the respective rights of each Party in and to the Article and the Video.

3. **Grant of Rights in Article.** In consideration of JoVE agreeing to publish the Article, the Author hereby grants to JoVE, subject to Sections 4 and 7 below, the exclusive, royalty-free, perpetual (for the full term of copyright in the Article, including any extensions thereto) license (a) to publish, reproduce, distribute, display and store the Article in all forms, formats and media whether now known or hereafter developed (including without limitation in print, digital and electronic form) throughout the world, (b) to translate the Article into other languages, create adaptations, summaries or extracts of the Article or other Derivative Works (including, without limitation, the Video) or Collective Works based on all or any portion of the Article and exercise all of the rights set forth in (a) above in such translations, adaptations, summaries, extracts, Derivative Works or Collective Works and (c) to license others to do any or all of the above. The foregoing rights may be exercised in all media and formats, whether now known or hereafter devised, and include the right to make such modifications as are technically necessary to exercise the rights in other media and formats. If the "Open Access" box has been checked in Item 1 above, JoVE and the Author hereby grant to the public all such rights in the Article as provided in, but subject to all limitations and requirements set forth in, the CRC License.



## ARTICLE AND VIDEO LICENSE AGREEMENT

4. **Retention of Rights in Article.** Notwithstanding the exclusive license granted to JoVE in **Section 3** above, the Author shall, with respect to the Article, retain the non-exclusive right to use all or part of the Article for the non-commercial purpose of giving lectures, presentations or teaching classes, and to post a copy of the Article on the Institution's website or the Author's personal website, in each case provided that a link to the Article on the JoVE website is provided and notice of JoVE's copyright in the Article is included. All non-copyright intellectual property rights in and to the Article, such as patent rights, shall remain with the Author.

5. **Grant of Rights in Video – Standard Access.** This **Section 5** applies if the "Standard Access" box has been checked in **Item 1** above or if no box has been checked in **Item 1** above. In consideration of JoVE agreeing to produce, display or otherwise assist with the Video, the Author hereby acknowledges and agrees that, Subject to **Section 7** below, JoVE is and shall be the sole and exclusive owner of all rights of any nature, including, without limitation, all copyrights, in and to the Video. To the extent that, by law, the Author is deemed, now or at any time in the future, to have any rights of any nature in or to the Video, the Author hereby disclaims all such rights and transfers all such rights to JoVE.

6. **Grant of Rights in Video – Open Access.** This **Section 6** applies only if the "Open Access" box has been checked in **Item 1** above. In consideration of JoVE agreeing to produce, display or otherwise assist with the Video, the Author hereby grants to JoVE, subject to **Section 7** below, the exclusive, royalty-free, perpetual (for the full term of copyright in the Article, including any extensions thereto) license (a) to publish, reproduce, distribute, display and store the Video in all forms, formats and media whether now known or hereafter developed (including without limitation in print, digital and electronic form) throughout the world, (b) to translate the Video into other languages, create adaptations, summaries or extracts of the Video or other Derivative Works or Collective Works based on all or any portion of the Video and exercise all of the rights set forth in (a) above in such translations, adaptations, summaries, extracts, Derivative Works or Collective Works and (c) to license others to do any or all of the above. The foregoing rights may be exercised in all media and formats, whether now known or hereafter devised, and include the right to make such modifications as are technically necessary to exercise the rights in other media and formats. For any Video to which this Section 6 is applicable, JoVE and the Author hereby grant to the public all such rights in the Video as provided in, but subject to all limitations and requirements set forth in, the CRC License.

7. **Government Employees.** If the Author is a United States government employee and the Article was prepared in the course of his or her duties as a United States government employee, as indicated in **Item 2** above, and any of the licenses or grants granted by the Author hereunder exceed the scope of the 17 U.S.C. 403, then the rights granted hereunder shall be limited to the maximum rights permitted under such

statute. In such case, all provisions contained herein that are not in conflict with such statute shall remain in full force and effect, and all provisions contained herein that do so conflict shall be deemed to be amended so as to provide to JoVE the maximum rights permissible within such statute.

8. **Likeness, Privacy, Personality.** The Author hereby grants JoVE the right to use the Author's name, voice, likeness, picture, photograph, image, biography and performance in any way, commercial or otherwise, in connection with the Materials and the sale, promotion and distribution thereof. The Author hereby waives any and all rights he or she may have, relating to his or her appearance in the Video or otherwise relating to the Materials, under all applicable privacy, likeness, personality or similar laws.

9. **Author Warranties.** The Author represents and warrants that the Article is original, that it has not been published, that the copyright interest is owned by the Author (or, if more than one author is listed at the beginning of this Agreement, by such authors collectively) and has not been assigned, licensed, or otherwise transferred to any other party. The Author represents and warrants that the author(s) listed at the top of this Agreement are the only authors of the Materials. If more than one author is listed at the top of this Agreement and if any such author has not entered into a separate Article and Video License Agreement with JoVE relating to the Materials, the Author represents and warrants that the Author has been authorized by each of the other such authors to execute this Agreement on his or her behalf and to bind him or her with respect to the terms of this Agreement as if each of them had been a party hereto as an Author. The Author warrants that the use, reproduction, distribution, public or private performance or display, and/or modification of all or any portion of the Materials does not and will not violate, infringe and/or misappropriate the patent, trademark, intellectual property or other rights of any third party. The Author represents and warrants that it has and will continue to comply with all government, institutional and other regulations, including, without limitation all institutional, laboratory, hospital, ethical, human and animal treatment, privacy, and all other rules, regulations, laws, procedures or guidelines, applicable to the Materials, and that all research involving human and animal subjects has been approved by the Author's relevant institutional review board.

10. **JoVE Discretion.** If the Author requests the assistance of JoVE in producing the Video in the Author's facility, the Author shall ensure that the presence of JoVE employees, agents or independent contractors is in accordance with the relevant regulations of the Author's institution. If more than one author is listed at the beginning of this Agreement, JoVE may, in its sole discretion, elect not take any action with respect to the Article until such time as it has received complete, executed Article and Video License Agreements from each such author. JoVE reserves the right, in its absolute and sole discretion and without giving any reason therefore, to accept or decline any work submitted to JoVE. JoVE and its employees, agents and independent contractors shall have



## ARTICLE AND VIDEO LICENSE AGREEMENT

full, unfettered access to the facilities of the Author or of the Author's institution as necessary to make the Video, whether actually published or not. JoVE has sole discretion as to the method of making and publishing the Materials, including, without limitation, to all decisions regarding editing, lighting, filming, timing of publication, if any, length, quality, content and the like.

11. **Indemnification.** The Author agrees to indemnify JoVE and/or its successors and assigns from and against any and all claims, costs, and expenses, including attorney's fees, arising out of any breach of any warranty or other representations contained herein. The Author further agrees to indemnify and hold harmless JoVE from and against any and all claims, costs, and expenses, including attorney's fees, resulting from the breach by the Author of any representation or warranty contained herein or from allegations or instances of violation of intellectual property rights, damage to the Author's or the Author's institution's facilities, fraud, libel, defamation, research, equipment, experiments, property damage, personal injury, violations of institutional, laboratory, hospital, ethical, human and animal treatment, privacy or other rules, regulations, laws, procedures or guidelines, liabilities and other losses or damages related in any way to the submission of work to JoVE, making of videos by JoVE, or publication in JoVE or elsewhere by JoVE. The Author shall be responsible for, and shall hold JoVE harmless from, damages caused by lack of sterilization, lack of cleanliness or by contamination due to the making of a video by JoVE its employees, agents or independent contractors. All sterilization, cleanliness or decontamination procedures shall be solely the responsibility of the Author and shall be undertaken at the Author's

expense. All indemnifications provided herein shall include JoVE's attorney's fees and costs related to said losses or damages. Such indemnification and holding harmless shall include such losses or damages incurred by, or in connection with, acts or omissions of JoVE, its employees, agents or independent contractors.

12. **Fees.** To cover the cost incurred for publication, JoVE must receive payment before production and publication the Materials. Payment is due in 21 days of invoice. Should the Materials not be published due to an editorial or production decision, these funds will be returned to the Author. Withdrawal by the Author of any submitted Materials after final peer review approval will result in a US\$1,200 fee to cover pre-production expenses incurred by JoVE. If payment is not received by the completion of filming, production and publication of the Materials will be suspended until payment is received.

13. **Transfer, Governing Law.** This Agreement may be assigned by JoVE and shall inure to the benefits of any of JoVE's successors and assignees. This Agreement shall be governed and construed by the internal laws of the Commonwealth of Massachusetts without giving effect to any conflict of law provision thereunder. This Agreement may be executed in counterparts, each of which shall be deemed an original, but all of which together shall be deemed to be one and the same agreement. A signed copy of this Agreement delivered by facsimile, e-mail or other means of electronic transmission shall be deemed to have the same legal effect as delivery of an original signed copy of this Agreement.

A signed copy of this document must be sent with all new submissions. Only one Agreement required per submission.

### CORRESPONDING AUTHOR:

Name:

Katherine Hany

Department:

Materials Science and Engineering

Institution:

UC Berkeley

Article Title:

Failure Analysis of Batteries using synchrotron-based hard X-ray microtomograph

Signature:

Katherine Hany

Date:

12/5/2014

Please submit a signed and dated copy of this license by one of the following three methods:

- 1) Upload a scanned copy of the document as a pdf on the JoVE submission site;
- 2) Fax the document to +1.866.381.2236;
- 3) Mail the document to JoVE / Attn: JoVE Editorial / 1 Alewife Center #200 / Cambridge, MA 02139

For questions, please email [submissions@jove.com](mailto:submissions@jove.com) or call +1.617.945.9051

## UNIVERSITY OF CALIFORNIA, BERKELEY

BERKELEY • DAVIS • IRVINE • LOS ANGELES • MERCED • RIVERSIDE • SAN DIEGO • SAN FRANCISCO



SANTA BARBARA • SANTA CRUZ

Professor Nitash P. Balsara  
Department of Chemical and Biomolecular Engineering

201-C Gilman Hall  
University of California  
Berkeley, CA 94720-1462

Phone: (510) 642-8973  
Fax: (510) 642-4778

March 4, 2015

Dear Dr. Nam Nguyen,

A revised manuscript entitled "Failure analysis of batteries using synchrotron-based hard X-ray microtomography" is enclosed. We have responded to each of the comments from the editors.

Yours sincerely,

*Nitash P. Balsara*

Nitash P. Balsara  
Professor of Chemical and Biomolecular Engineering

## RESPONSE TO REFEREE'S REPORTS

### **Editorial comments:**

**Comment 1:** Please take this opportunity to thoroughly proofread the manuscript to ensure that there are no spelling or grammar issues. The JoVE editor will not copy-edit your manuscript and any errors in the submitted revision may be present in the published version.

The manuscript was proofread before submission.

**Comment 2.** Please be consistent with Journal titles, either abbreviate them all or spell them out entirely.

The references section was edited so that all of the journal titles appear as abbreviations.

**Comment 3.** Please ensure that **all text** in the protocol section is written in the imperative tense as if telling someone how to do the technique (e.g., “Do this,” “Ensure that,” etc.). The actions should be described in the imperative tense in complete sentences wherever possible. Avoid usage of phrases such as “could be,” “should be,” and “would be” throughout the Protocol. Any text that cannot be written in the imperative tense may be added as a “Note.” However, notes should be concise and used sparingly. Please include all safety procedures and use of hoods, etc.

The steps of the procedure were reworded to the imperative tense. Notes were used sparingly and only when expressly relevant to the procedural call.

**Comment 4.** The Protocol should contain only action items that direct the reader to do something. Please move the discussion about the protocol to the Discussion.

The steps of the protocol were reworded to only contain action items for the reader.

**Comment 5.** The Figure Legends should include a title and a short description of the data presented in the Figure and relevant symbols. The Discussion of the Figures should be placed in the Representative Results. Details of the methodology should not be in the Figure Legends, but rather the Protocol.

The Figure Legends were shortened to include only descriptions of the data shown in the Figure.