



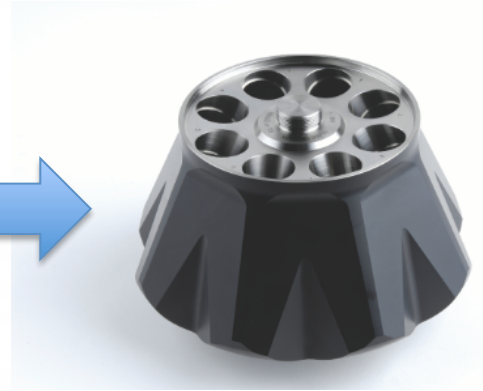
Spin 10 mL lipoprotein-containing media to remove cell debris.



Add 5.95 g NaCl to the media and bring the volume to 23 mL with water (1.2 g/mL NaCl density solution). NaCl must be completely dissolved.



Decant all solution into ultracentrifuge tube and gently overlay it with 0.5 mL water. To avoid the tube from collapsing, balance it (by weight) and fill it up as described above.



Using T865 rotor, spin the samples at $429.460 \times g$ for 24 hours. Isolate the top 0.5 mL immediately by gentle pipetting.