

Journal of Visualized Experiments

Agarose microchambers for long-term calcium imaging of *Caenorhabditis elegans*

--Manuscript Draft--

Manuscript Number:	JoVE52742R2
Full Title:	Agarose microchambers for long-term calcium imaging of <i>Caenorhabditis elegans</i>
Article Type:	Methods Article - JoVE Produced Video
Keywords:	<i>Caenorhabditis elegans</i> , model organism, neurobiology, microfluidics, calcium imaging, behavior
Manuscript Classifications:	4.12.776.419.500: <i>Caenorhabditis elegans</i> Proteins (<i>C. elegans</i>); 6.4.96.144: Behavioral Research; 6.4.96.276: Genetics, Behavioral; 7.11.561.600.815: Sleep
Corresponding Author:	Henrik Bringmann Max-Planck-Institut für biophysikalische Chemie Goettingen, Niedersachsen GERMANY
Corresponding Author Secondary Information:	
Corresponding Author E-Mail:	Henrik.Bringmann@mpibpc.mpg.de
Corresponding Author's Institution:	Max-Planck-Institut für biophysikalische Chemie
Corresponding Author's Secondary Institution:	
First Author:	Michal Turek
First Author Secondary Information:	
Other Authors:	Michal Turek
	Judith Besseling
Order of Authors Secondary Information:	
Abstract:	Behavior is controlled by the nervous system. Calcium imaging is a straightforward method in the transparent nematode <i>Caenorhabditis elegans</i> to measure the activity of neurons during various behaviors. To correlate neural activity with behavior, the animal should not be immobilized but should be able to move. Many behavioral changes occur during long time scales and require recording over many hours of behavior. This also makes it necessary to culture the worms in the presence of food. How can worms be cultured and their neural activity imaged over long time scales? Agarose microchambers were previously developed to culture and observe small larvae and have now been adapted to study all life stages from early L1 until the adult stage of <i>C. elegans</i> . AMI can be performed on various life stages of <i>C. elegans</i> . Long-term calcium imaging is achieved without immobilizing the animals by using short externally triggered exposures combined with an electron multiplying charge-coupled device (EMCCD) camera recording. Zooming out or scanning can scale up this method to image up to 40 worms in parallel. Thus, a method is described to image behavior and neural activity over long time scales in all life stages of <i>C. elegans</i> .
Author Comments:	
Additional Information:	
Question	Response
If this article needs to be "in-press" by a certain date to satisfy grant requirements, please indicate the date below and explain in your cover letter.	
If this article needs to be filmed by a certain date to due to author/equipment/lab availability, please	

indicate the date below and explain in
your cover letter.

Title: Agarose microchambers for long-term calcium imaging of *Caenorhabditis elegans*

Authors:

Michal Turek, Judith Besseling, Henrik Bringmann

Authors: institution(s)/affiliation(s) for each author:

Michal Turek

Max Planck Institute for Biophysical Chemistry, Göttingen, Germany

Michal.Turek@mpibpc.mpg.de

Judith Besseling

Max Planck Institute for Biophysical Chemistry, Göttingen, Germany

Judith.Besseling@mpibpc.mpg.de

Henrik Bringmann

Max Planck Institute for Biophysical Chemistry, Göttingen, Germany

Henrik.Bringmann@mpibpc.mpg.de

Corresponding author:

Henrik Bringmann

Keywords:

Caenorhabditis elegans, model organism, neurobiology, microfluidics, calcium imaging, behavior

Short Abstract:

Imaging behavior and neural activity over long time scales without immobilization of the animal is a prerequisite to understand behavior. Agarose microfluidic chambers imaging (AMI) can be used to image neural activity and behavior for all life stages of *Caenorhabditis elegans*.

Long Abstract:

Behavior is controlled by the nervous system. Calcium imaging is a straightforward method in the transparent nematode *Caenorhabditis elegans* to measure the activity of neurons during various behaviors. To correlate neural activity with behavior, the animal should not be immobilized but should be able to move. Many behavioral changes occur during long time scales and require recording over many hours of behavior. This also makes it necessary to culture the worms in the presence of food. How can worms be cultured and their neural activity imaged over long time scales? Agarose microchambers were previously developed to culture and observe small larvae and have now been adapted to study all life stages from early L1 until the adult stage of *C. elegans*. AMI can be performed on various life stages of *C. elegans*. Long-term calcium imaging is achieved without immobilizing the animals by using short externally triggered exposures combined with an electron multiplying charge-coupled device (EMCCD) camera recording. Zooming out or scanning can scale up this method to image up to 40 worms in

parallel. Thus, a method is described to image behavior and neural activity over long time scales in all life stages of *C. elegans*.

Introduction:

Caenorhabditis elegans has been established as a model system to study behavior¹. Due to its amenability to genetics, the molecular and cellular mechanisms underlying behavior can be studied. Many behaviors occur on long time scales. Two principal approaches can be used to observe motile animals over long time scales. The first approach is following the animal during movement using an automated stage or camera²⁻⁸ and the second is to restrict the movement to a range that is at least as small as the field of view of the camera⁹⁻¹⁴. Both methods have their advantages. Tracking allows following an animal over long spatial ranges but limits the number of animals that can be discerned in one experiment. Restricting the movement of the animals allows scaling up the observation to many individuals at the same time by using arrays of restricted compartments.

Because the nematode is transparent, live fluorescent imaging can be performed non-invasively¹⁵. Calcium imaging provides a functional readout for the activity of excitable cells and is established for *C. elegans*¹⁶⁻²⁰. Calcium enters the cell via channels in the plasma membrane that open upon depolarization. Thus, calcium acts as a proxy for neural activity. Calcium sensors can be grouped in two major classes, ratiometric and non-ratiometric sensors. Both classes employ conformational changes of calcium-binding proteins induced upon binding of calcium. Ratiometric sensors contain two fluorescent proteins. When the lower-wavelength fluorescent protein is excited, a part of the light energy is transmitted to the higher wavelength fluorescent protein as a function of their distance in a process called Fluorescence Resonance Energy Transfer or Förster Resonance Energy Transfer (FRET)²¹. Non-ratiometric sensors are based on circularly permuted GFP and employ de-quenching of the fluorophore caused by calcium binding²². Each class has its advantages. While ratiometric sensors are less sensitive to movement or expression artifacts, non-ratiometric sensors typically have a higher dynamic range. Both ratiometric and non-ratiometric sensors have been useful to study the activity of excitable cells in *C. elegans*^{16-20,23,24}.

When doing long-term fluorescence imaging, the experimenter will have to deal with several potential challenges: 1. Disturbance of behavior through excitation light: Worms are sensitive to short-wavelength fluorescence excitation light and avoid light from the violet to blue range that is used for calcium imaging^{25,26}. Worms respond with either a backward or a forward escape response^{25,26}. Thus, the amount of light needs to be controlled. 2. Bleaching of the fluorescent sensor protein: Often, bleaching of the fluorescent protein hampers long-term imaging. Typically, however, light intensities that are needed to observe bleaching are higher than the light intensities that cause disturbing effects on the behavior of the animals. Thus, bleaching is only a theoretical problem in this type of calcium imaging. 3. Worms inside the microchambers are not fixed and move constantly during wake behavior and images may appear blurred if the worm is not immobilized. All these challenges can be solved using extremely short exposure times with low light intensity. This can be realized by using a highly sensitive EMCCD camera with short exposure times and external triggering of a light emitting diode (LED). To expose the worms to the illumination light as briefly as possible (only during the exposure time of the camera) the LED is externally triggered using a transistor-transistor logic (TTL) signal that the camera emits during exposure resulting in an illumination of the worm for precisely the time the camera chip is exposed. This also means that the EMCCD chip will be dark during data

readout, which is optimal for readout performance of this chip.

Previously, agarose microchambers have been developed for long-term fluorescence imaging of *C. elegans* larvae⁹. Here, it is described how agarose micro-chambers can be used for long-term calcium imaging for any life stage of *C. elegans*, how calcium imaging can be performed, and how this method can be upscaled to assay many individual worms in parallel.

Protocol Text:

1. Instruments, Culture Media and Dishes

1.1) Use a microscope that is capable of keeping the sample in focus and that is equipped with an automatic stage. Build a custom-made lid heater or purchase a commercial solution. Set up an LED-EMCCD camera system in which the exposure of the camera triggers LED illumination through a TTL signal using manufacturer's instructions. Note: See discussion for details.

1.2) Polydimethylsiloxan (PDMS) stamps:

1.2.1) Fabricate PDMS stamps in a microfluidics facility or have the PDMS stamps produced by a commercial foundry. To use a commercial foundry, send an autocad file to the company and specify the depth (15 μm , for example) of the device. After delivery from the foundry, cut the PDMS chip into its 16 stamps using a scalpel.

1.2.2) Bond each individual stamp to a glass slide using air plasma. For bonding, expose both the PDMS stamp and the glass slide to air plasma for about one minute (using the highest plasma settings at 0.5 mbar). Ensure that the surfaces for bonding face upwards during plasma treatment. Then, place the PDMS stamp onto the glass slide.

1.3) Take a 3.5 cm bottom dish and cut out a square area of 18 x 18 mm from the center of the bottom of the dish using a vertical milling machine and sharp rotary cutters. Use low rotation speed of the cutter and slow feeding to prevent the plastic from melting due to heat produced by friction. Prepare several dishes at once.

Note: The bottom dish can be reused many times after the experiment if it is cleaned after soaking in pure ethanol overnight.

1.4) Agarose:

1.4.1) Dissolve 3 g high-melting point agarose in 100 ml S-Basal (5.85 g NaCl, 1 g K_2HPO_4 , 6 g KH_2PO_4 , 1 ml cholesterol (5 mg/ml in ethanol), H_2O to 1 liter, sterilize by autoclaving) by boiling. Make aliquots of the dissolved agarose in 2 ml Eppendorf tubes and store. Also, prepare a batch of low-melting point agarose exactly the same way as the high-melting point agarose.

1.4.2) Prior to use, place 3 aliquots of high-melting point agarose onto a heating block at 95-98°C. Prior to use, place one aliquot of low-melting point agarose onto a heating block at 95-98°C until it has melted and then onto a heating block at 30-35°C.

2. Selection of Animals

2.1) Grow worms at a low density on seeded NGM plates to obtain clean animals. Make sure that

there is plenty of food and only few animals on the plate.

2.2) For imaging L1 larvae, transfer about 30 eggs containing embryos at the pretzel stage onto a fresh seeded NGM plate. For transferring later larval stages or adult *C. elegans*, transfer about 30 worms onto a fresh seeded NGM plate.

3. Preparation of agarose microchambers

3.1) Preparation of the dish:

3.1.1) Take a plastic dish with a square opening of 18 x 18 mm at the bottom and place it upside down with the opening facing upwards. Close the opening by placing a piece of double-sided sticky tape of 20 x 20 mm onto the opening. Turn the dish around so that the sticky tape is on the bottom and place the dish onto a hard surface. Cut the opening free using a scalpel.

3.1.2) Using a P1000 pipette, fill 2 ml of 3% high-melting point agarose in S-Basal into the dish. Place the agarose onto the area that surrounds the opening and let solidify. Wait until the agarose is solid.

3.1.3) Turn around the dish and peel off the protective film that covers the double-sided sticky tape so that the sticky side will remain on the dish and will be exposed. Note: As a result, a fine ring of sticky tape will surround the outside of the opening. The agarose serves as a moisture reservoir that will later surround the sample.

3.2) Casting of microchambers:

3.2.1) Expose the PDMS surface for molding with air plasma for 20 - 60 seconds. Note: This plasma treatment renders the PDMS surface hydrophilic, which prevents the trapping of air bubbles and produces sharper prints.

3.2.2) Construct two spacers of equal height by stacking 5-9 glass slides. Place, in parallel to their long sides, the first spacer stack, then a single glass slide, then again a spacer stack. Place the glass slide that contains the PDMS stamp orthogonally across the spacers. Adjust the height of the spacers so that there is a space of about 1.5 mm between the molding surface of the PDMS stamp and the single glass slide.

3.2.3) Place a drop of hot liquid high-melting point agarose onto the single glass slide near the PDMS stamp and quickly slide the PDMS stamp vertically into the liquid agarose. Let the agarose solidify. Check that it gets an opaque appearance, which usually takes about two minutes. Pull off the stamp vertically with one move.

Note: It is convenient to glue the spacer slides together with double-sided sticky tape. The vertical movement of the stamp prevents air bubbles from getting trapped in the agarose.

3.3) Transfer the eggs or worms together with OP50 bacteria onto the agarose using a fine platinum wire pick. Distribute one egg or one worm per chamber together with food using an eyelash. Fill around 30 eggs onto one agarose pad. Note: The correct filling is crucial. See the discussion for details.

3.4) Cut the agarose slab containing the filled microchambers into a square of about 15 x 15 mm so that it fits nicely into the opening of the dish. Pick up the square agarose slab with forceps and place it upside down onto a glass coverslip of 20 x 20 mm. Once dropped, do not lift it up again or slide it around because this may cause the bacteria and worms to be pushed out of their chambers.

3.5) Assembly of the dish:

3.5.1) Place the glass coverslip onto the opening of the plastic dish. Gently press down the glass coverslip onto the ring made of double-sided sticky tape. Take care not to break the glass.

3.5.2) Turn the dish upside down and use a P1000 pipette to fill the gap between the agar slab containing the microchambers and the agarose reservoir with liquid low-melting point agarose cooled to about 30°C. Wait until the agarose has solidified.

3.5.3) Seal the dish with a lid. For inverted microscopes use a heated lid. For upright microscopes use a normal lid and seal the dish with parafilm.

4. Calcium imaging

4.1) Use transgenic strains expressing genetically encoded calcium sensors such as HBR16 (*goeIs5[pnmr-1::SL1-GCaMP3.35-SL2::unc-54-3'UTR, unc-119(+)]*)²⁷.

4.2) Use a compound microscope equipped for wide-field epifluorescence. Connect the TTL output of the EMCCD camera to the TTL input of the LED, so that each time the camera records a frame the sample will be illuminated. Use an exposure time of about 5 ms. Use EM gain in the range of 50 – 300.

4.3) Specify a burst movie running for 24 h with each worm being imaged every 15-30 minutes first for 20 seconds with DIC, then for 20 seconds with a GFP fluorescence to record GCaMP, and then take a final image of the mKate2 signal is taken to control for expression levels. Use a frame rate of 2/s during each burst.

4.4) For visual data inspection, use a false-color map to enhance the visibility of small changes in fluorescence intensity. Plot fluorescent data as $\Delta F/F$, with F being the average baseline value of fluorescence. A detailed description of calcium data analysis can be found in the literature²⁰.

5. Parallel AMI of multiple worms

5.1) Place the dish containing the microchambers onto the microscope, focus on the sample and engage the autofocus. Set up a software protocol so that the camera acquires a burst of 40 image frames in 20 seconds every half an hour for 24 hours, which will result in 1920 frames per worm, a reasonable amount of data. Set up the scan so that it visits each worm using the stage. Aim to film about 30 worms in one run.

5.2) Image multiple worms by zooming out, i.e. using a lower magnification. Use a lower magnification to cover several microchambers with the camera chip and film several adjacent

microchambers simultaneously. After the end of image acquisition, separate the data for each individual chamber by cropping a region of interest covering one animal.

5.3) To quickly assess mobility data, use frame subtraction²⁸⁻³².

6. Imaging different life stages of *C. elegans*

6.1 Use agarose microchambers for all life stages of *C. elegans* from L1 to adult and including dauers. Use the appropriate chamber dimensions for different life stages that are shown in Table 1.

Representative Results:

Agarose microchambers can be applied to any life stage of *C. elegans*. As can be seen in figure 1A, larval development and sleep behavior during L1 lethargus can be observed. Shown are chamber sizes that are 190 x 190 μm , 10 μm deep. If longer time scales are required, larger chambers can be used. As can be seen in figure 1B, using a chamber with larger dimensions (370 x 370 μm , 25 μm deep) allows development of *C. elegans* from egg until adult. Figure 1C shows an analysis of long-term changes in behavior using frame subtraction of a worm grown in a chamber from egg until adult. Shown are mean intensities after frame subtraction for selected bursts during wake and lethargus. The lower the mean intensity after frame subtraction values is, the lower the mobility of the worm. Shown are selected burst traces from one wake condition and one lethargus condition per larval stage. The observed increase in mean intensity during development is mostly due to increased contrast and size of the animal. Figure 1D shows a dauer larva, an alternative life stage that is engaged during adverse environmental conditions³³. Chamber size is 370 x 370 μm , 15 μm deep. Note that the dauer larva was placed into the chamber without bacterial food, which would cause exit from the dauer larval stage. Figure 1E shows an adult worm that has already laid many eggs into the chamber. Chamber dimensions used for the adult were 700 x 700 μm , 45 μm deep. Finally, figure 1F shows an adult hermaphrodite and a male mating inside an adult chamber.

Calcium imaging in motile worms is possible with GCaMP calcium sensors. Figures 2A and 2B show calcium imaging of the command interneuron AVA for an L1 larva²⁷. Figure 2C and 2D show calcium activity for the same type of neuron in an adult animal.

Scaling up long-term imaging is possible by scanning and by zooming out. Figure 3A shows the image quality of simultaneous imaging of 30 worms on one camera chip with a 5 megapixel camera. Figure 3B shows the image quality of four worms calcium imaged simultaneously.

Tables and Figures:

Table1:

Chamber sizes for different life stages. Shown are chamber dimensions and magnifications that are useful for various stages optimized for a 8 x 8 mm camera chip.

Figure 1: Adaptation of AMI to all life stages of *C. elegans*. A) Larva imaged from early L1 until early L2 stage in 190 x 190 μm chambers. B) Development from egg until adult in a 370 x 370 μm chamber. C) Mobility of a worm assessed using frame subtraction. Shown is the mean intensity of all pictures of the image after frame subtraction for one selected burst movie for each larval stage for wake and lethargus behavior. D) A dauer larva in the absence of food in a 370 x

370 μm chamber. E) Adult hermaphrodite with many eggs laid into a 700 x 700 μm chamber. F) Mating of a male and a hermaphrodite inside a 700 x 700 μm chamber. YA means young adult.

Figure 2: Calcium imaging with AMI. A) Calcium imaging with GCaMP3 in the command interneuron AVA of L1 larvae using the *nmr-1* promoter. Shown are two false-color images. In the left image, the activity of AVA is low and the worm is not making a backwards movement. In the right image the activity of AVA is high, and the worm is moving backwards. B) Calcium transients over time for an L1 worm. C) and D) Calcium transients in an adult animal.

Figure 3: Imaging multiple worms in parallel by zooming out. A) Simultaneous imaging of 30 L1 worms per frame using 190 x 190 μm chambers and a 100x magnification (using a 10x objective) and a 16.6 x 14 mm camera chip. B) Simultaneous imaging of four L3 worms per frame using 370 x 370 μm chambers and 100x magnification and a region of interest of a 16.6 x 14 mm camera chip.

Discussion:

Hardware: The focus of a microscope will typically drift during long-term image acquisition. For compound microscopes, focus-keeping systems can be purchased from the major microscope manufacturers. In case a compound microscope with focus control is too pricy, a simple alternative would be to use a stereomicroscope. Compound microscopes allow the use of objectives with high numerical aperture (NA) and can be easily automated. 40x oil objectives are well suited. Water immersion lenses are not ideal because of evaporation during long-term imaging. Differential interference contrast (DIC) generates a nice contrast that helps to follow morphological and behavioral changes, but simple bright field imaging can also be used. For DIC or bright field imaging, use red light by placing a red light filter into the dia-illumination path of the microscope. For scanning of several microchambers an automated stage is necessary. Best performance is achieved when a stage is used that has nonlinear acceleration and deceleration and can be set to low scan speed to prevent disturbing the animals during scanning. We have not observed behavioral responses or calcium increase in mechanosensitive neurons (ALM and PLM) during scanning, suggesting that slow scanning indeed does not activate the mechanosensitive system of the worm (data not shown). Commercial LED systems can be used. Several companies offer ready-to-use solutions that include the LEDs at different wavelengths. The LED should have the option of externally triggering the LED with a TTL signal. A highly sensitive camera is needed for calcium imaging of moving animals. EMCCD cameras are the most sensitive cameras on the market. The camera needs to have a TTL output during exposure (also called “fire” output). A lid heater is required to prevent condensation on the lid if using an inverted microscope. On an upright microscope, the dish will be placed so that the lid will be at the bottom and thus condensation is prevented and no lid heating is required. The lid should tightly close the dish to prevent evaporation of water during long-term imaging.

PDMS stamps: The surface of the PDMS stamp that contains the structure for molding the agarose is faced away from the glass slide, which supports the PDMS stamp. A list with companies that offer custom microfluidic chips can be found on Wikipedia (http://en.wikipedia.org/wiki/List_of_microfluidics_related_companies). Having the PDMS chips produced by a commercial foundry is economical. With one master mold several PDMS chips can be cast. Because one PDMS chip contains many stamps (16 stamps fit on each PDMS chip) and because each PDMS stamp will be reused for casting many agarose chamber arrays the

cost per agarose chamber array is in the range of a few cents.

Filling the nematodes into their chambers: This is the most critical step in the protocol and the following points should be considered: A) The moistness of the agarose is crucial for transferring the worms and for imaging. If the agarose is too moist, i.e. there is a liquid covering an area of several microchambers, it will not be possible to distribute bacterial food and worms in a controlled manner because the liquid will make the bacteria flow away. If the agarose is too dry then the bacteria and worms may not get off the pick easily which means that increased force needs to be used to drop the worms and bacteria which easily causes damage to the agarose. When filling in a lot of worms the agarose may dry up. In the worst case the agarose will be so dry in the end that the chambers will collapse. If the agarose is too dry it can be rehydrated by placing a small drop (about 2 μ l) of S-Basal onto the side of the chip where there are no worms. Then dip the platinum wire pick into the liquid and even pull some of the liquid into the area where the chambers are filled with worms. B) The amount of food is critical for successful long-term imaging. If there is not enough food, the worms may run out of it. If there is excessive food the cavity of the chamber will not behave like a liquid but rather like a solid and will allow worms to escape from the chamber by pushing off the bacteria. Aim to obtain a bacterial suspension that fills the entire chamber. The worms are in constant physical contact with the agar and glass surface along most of their length during the experiment and the crawling behavior appears to be similar to movement on a plate and dissimilar to thrashing in liquid. C) Mechanical damaging of the agarose can ruin the experiment. A fine pick is essential. It should not have sharp corners. A soft eyelash attached to a pipet tip can be used to move bacteria or worms into the chambers instead of using a platinum pick. In most cases, however, overdried agarose is the reason for damage. The pick or eyelash should, ideally, only barely touch the agarose itself, and the water film on the agarose surface should pull off worms and bacteria. When sealing the chambers, again, the moisture of the agarose is essential. There should not be any free liquid on the agarose surface because this may wash away bacteria and worms during sealing. Large bubbles may be removed by gently lifting a corner of the agar slab. Small bubbles that are smaller than the chamber often get trapped inside the chambers. These bubbles are not a problem and will disappear by absorption. After assembling the dish, check again that the agarose is not too dry or too wet. The chambers should be nicely sealed and there should not be any flow of liquid between chambers. If the agarose is too wet, the chambers will not seal properly. Worms may escape or their food will be washed away. If the sample is too moist, simply open the lid and let the agarose dry for a minute or two. If the agarose is too dry, the chambers may collapse and the worms will escape.

Scaling up by zooming out: For fluorescence imaging, zooming out is limited by the low amount of light obtained at lower magnifications. Also, EMCCD cameras are optimized for sensitivity and often have a relatively low resolution. However, scaling up imaging four-fold is well possible. For instance, four chambers of 190 μ m x 190 μ m can fit onto one frame when using 140x magnification (achieved by using a 20 x Objective and a 0.7 x camera mount) and a 512 x 512 pixel, 8 x 8 mm camera. A high-resolution camera with a large chip (such as sCMOS cameras, 16.6 mm x 14 mm chip, 2560 x 2560 pixels = 5.5 Megapixel) optimizes scaling up of DIC and bright field imaging. For instance, up to 30 L1 worms in 190 μ m x 190 μ m chambers can fit onto each frame of this camera when using a 100x magnification (see Figure 3). In principle, zooming out and scanning can also be combined to obtain even greater numbers of animals. Most neurons stay quite well in focus, so that only one focal plane needs to be imaged.

If neurons are found to move out of the focus, a z scan using a piezo drive can be taken at each time point.

Adaptation to different behaviors: This protocol gives a good idea of the behavior across long time scales. Obviously, the timing of the bursts needs to be adapted to different behaviors and life stages.

Limitations of the technique: Several factors limit the duration of imaging. The most important is the amount of food. Once the food is consumed, larvae stop developing. Thus, in small chambers (190 μm x 190 μm) worms develop until the L3 stage and then arrest. If longer imaging time is required, larger chambers have to be used. The maximum duration of long-term imaging is in the range of 2.5-3 days. If longer imaging is required, the worms need to be recovered and placed into new chambers. When imaging adult worms, another limitation is caused by the offspring of these worms. Adult worms lay eggs from which larvae hatch. These larvae will also stay inside the chamber, consume food, and may disturb the image analysis. If offspring is a problem, a solution is to either use sterile adults or to repeatedly place the worms into fresh chambers. To recover worms, the agarose slab containing the chamber is cut free with a scalpel, is pulled off the coverslip, and is placed onto an NGM plate from which the worms can be recovered. Another limit is the restriction of the worms to relatively small areas. This may be a problem if long-range movement needs to be analyzed. While animals in the chambers can be stimulated mechanically and optogenetically^{21,27,34,35}, the sealed nature of the chamber will make it difficult to apply soluble or volatile stimulants. Biologically important gases such as oxygen or carbon dioxide can diffuse freely in the agar. The large air reservoir in the dish should keep the gas concentrations in the chambers constant over the time needed for experiments. However, it should be kept in mind that the local oxygen concentration in the chamber may resemble more the conditions found in liquid culture than culture on the plate.

Significance with respect to existing methods: Microfluidic devices have greatly advanced behavioral and developmental studies in *C. elegans*. Often, microfluidic structures are made of PDMS¹². Here we describe a protocol for generating microfluidic culture chambers made from agarose. The strength of this technique is the combination of high imaging quality, correlation of behavior with physiological measurements, long-term imaging, and a reasonably high throughput. High image quality is achieved by imaging through the glass coverslip using high NA objectives. As a result, fluorescence imaging such as calcium imaging and confocal imaging of subcellular structures can be performed. Because the animals are not immobilized like in other systems, it allows a correlation of behavior with physiological measurements. Because the animals have ample food, they continue developing allowing long-term imaging. This system can image many worms in one run because animals are restricted to their defined chambers. Thus, this method can be easily scaled up^{9,27,34-36}.

Future applications: So far, this system has been used mainly to study sleep behavior in *C. elegans* L1 larvae. However, the adaptation to all stages will make it possible to study a wide range of behaviors also in dauers and adults. A wide array of behaviors can be studied with this technique ranging from mating to egg laying.

Acknowledgments: The Max Planck Society and a Göttingen Graduate School Junior Group stipend to H.B. funded this work.

Disclosures: The authors declare that they have no competing financial interests.

References:

- 1 Brenner, S. The genetics of *Caenorhabditis elegans*. *Genetics* **77**, 71-94 (1974).
- 2 Husson, S. J., Costa, W. S., Schmitt, C. & Gottschalk, A. Keeping track of worm trackers. *WormBook*, 1-17, doi:10.1895/wormbook.1.156.1 (2012).
- 3 Yemini, E., Jucikas, T., Grundy, L. J., Brown, A. E. & Schafer, W. R. A database of *Caenorhabditis elegans* behavioral phenotypes. *Nature Methods* **10**, 877-879, doi:10.1038/nmeth.2560 (2013).
- 4 Likitlersuang, J., Stephens, G., Palanski, K. & Ryu, W. S. C. *elegans* tracking and behavioral measurement. *Journal of Visualized Experiments : JoVE*, e4094, doi:10.3791/4094 (2012).
- 5 Yemini, E., Kerr, R. A. & Schafer, W. R. Tracking movement behavior of multiple worms on food. *Cold Spring Harbor Protocols* **2011**, 1483-1487, doi:10.1101/pdb.prot067025 (2011).
- 6 Swierczek, N. A., Giles, A. C., Rankin, C. H. & Kerr, R. A. High-throughput behavioral analysis in *C. elegans*. *Nature Methods* **8**, 592-598, doi:10.1038/nmeth.1625 (2011).
- 7 Ramot, D., Johnson, B. E., Berry, T. L., Jr., Carnell, L. & Goodman, M. B. The Parallel Worm Tracker: a platform for measuring average speed and drug-induced paralysis in nematodes. *PLoS One* **3**, e2208, doi:10.1371/journal.pone.0002208 (2008).
- 8 Larsch, J., Ventimiglia, D., Bargmann, C. I. & Albrecht, D. R. High-throughput imaging of neuronal activity in *Caenorhabditis elegans*. *Proceedings of the National Academy of Sciences U S A* **110**, E4266-4273, doi:10.1073/pnas.1318325110 (2013).
- 9 Bringmann, H. Agarose hydrogel microcompartments for imaging sleep- and wake-like behavior and nervous system development in *Caenorhabditis elegans* larvae. *Journal of Neuroscience Methods* **201**, 78-88, doi:S0165-0270(11)00418-3 [pii] 10.1016/j.jneumeth.2011.07.013 (2011).
- 10 Yu, C. C., Raizen, D. M. & Fang-Yen, C. Multi-well imaging of development and behavior in *Caenorhabditis elegans*. *Journal of Neuroscience Methods* **223**, 35-39, doi:10.1016/j.jneumeth.2013.11.026 (2014).
- 11 Luke, C. J., Niehaus, J. Z., O'Reilly, L. P. & Watkins, S. C. Non-microfluidic methods for imaging live *C. elegans*. *Methods* **68**, 542-547, doi:10.1016/j.ymeth.2014.05.002 (2014).
- 12 San-Miguel, A. & Lu, H. Microfluidics as a tool for *C. elegans* research. *WormBook*, 1-19, doi:10.1895/wormbook.1.162.1 (2013).
- 13 Shi, W., Qin, J., Ye, N. & Lin, B. Droplet-based microfluidic system for individual *Caenorhabditis elegans* assay. *Lab Chip* **8**, 1432-1435, doi:10.1039/b808753a (2008).
- 14 Krajniak, J. & Lu, H. Long-term high-resolution imaging and culture of *C. elegans* in chip-gel hybrid microfluidic device for developmental studies. *Lab Chip* **10**, 1862-1868, doi:10.1039/c001986k (2010).
- 15 Chalfie, M., Tu, Y., Euskirchen, G., Ward, W. W. & Prasher, D. C. Green fluorescent protein as a marker for gene expression. *Science* **263**, 802-805, doi:10.1126/science.8303295 (1994).
- 16 Kerr, R. *et al.* Optical imaging of calcium transients in neurons and pharyngeal muscle of *C. elegans*. *Neuron* **26**, 583-594 (2000).

- 17 Suzuki, H. *et al.* In vivo imaging of *C. elegans* mechanosensory neurons demonstrates a specific role for the MEC-4 channel in the process of gentle touch sensation. *Neuron* **39**, 1005-1017, doi:S0896627303005397 [pii] (2003).
- 18 Hilliard, M. A. *et al.* In vivo imaging of *C. elegans* ASH neurons: cellular response and adaptation to chemical repellents. *EMBO Journal* **24**, 63-72, doi:7600493 [pii] 10.1038/sj.emboj.7600493 (2005).
- 19 Frokjaer-Jensen, C. *et al.* Effects of voltage-gated calcium channel subunit genes on calcium influx in cultured *C. elegans* mechanosensory neurons. *Journal of Neurobiology* **66**, 1125-1139, doi:10.1002/neu.20261 (2006).
- 20 Kerr, R. A. Imaging the activity of neurons and muscles. *WormBook*, 1-13, doi:10.1895/wormbook.1.113.1 (2006).
- 21 Miyawaki, A., Griesbeck, O., Heim, R. & Tsien, R. Y. Dynamic and quantitative Ca²⁺ measurements using improved cameleons. *Proceedings of the National Academy of Sciences U S A* **96**, 2135-2140, doi:10.1073/pnas.96.5.2135 (1999).
- 22 Nakai, J., Ohkura, M. & Imoto, K. A high signal-to-noise Ca(2+) probe composed of a single green fluorescent protein. *Nature Biotechnology* **19**, 137-141, doi:10.1038/84397 (2001).
- 23 Akerboom, J. *et al.* Genetically encoded calcium indicators for multi-color neural activity imaging and combination with optogenetics. *Frontiers in Molecular Neuroscience* **6**, 2, doi:10.3389/fnmol.2013.00002 (2013).
- 24 Tian, L. *et al.* Imaging neural activity in worms, flies and mice with improved GCaMP calcium indicators. *Nature Methods* **6**, 875-881, doi:nmeth.1398 [pii] 10.1038/nmeth.1398 (2009).
- 25 Edwards, S. L. *et al.* A novel molecular solution for ultraviolet light detection in *Caenorhabditis elegans*. *PLoS Biology* **6**, e198, doi:10.1371/journal.pbio.0060198 (2008).
- 26 Ward, A., Liu, J., Feng, Z. & Xu, X. Z. Light-sensitive neurons and channels mediate phototaxis in *C. elegans*. *Nat Neurosci* **11**, 916-922, doi:10.1038/nn.2155 (2008).
- 27 Turek, M., Lewandrowski, I. & Bringmann, H. An AP2 transcription factor is required for a sleep-active neuron to induce sleep-like quiescence in *C. elegans*. *Current Biology* **23**, 2215-2223, doi:10.1016/j.cub.2013.09.028 (2013).
- 28 Singh, K. *et al.* *C. elegans* Notch Signaling Regulates Adult Chemosensory Response and Larval Molting Quiescence. *Current Biology* **21**, 825-834, doi:S0960-9822(11)00426-X [pii] 10.1016/j.cub.2011.04.010 (2011).
- 29 Raizen, D. M. *et al.* Lethargus is a *Caenorhabditis elegans* sleep-like state. *Nature* **451**, 569-572, doi:nature06535 [pii] 10.1038/nature06535 (2008).
- 30 Iwanir, S. *et al.* The microarchitecture of *C. elegans* behavior during lethargus: homeostatic bout dynamics, a typical body posture, and regulation by a central neuron. *Sleep* **36**, 385-395, doi:10.5665/sleep.2456 (2013).
- 31 Nagy, S., Raizen, D. M. & Biron, D. Measurements of behavioral quiescence in *Caenorhabditis elegans*. *Methods* doi:10.1016/j.ymeth.2014.03.009 (2014).
- 32 Nagy, S. *et al.* A longitudinal study of *Caenorhabditis elegans* larvae reveals a novel locomotion switch, regulated by Galphas signaling. *eLife* **2**, e00782, doi:10.7554/eLife.00782 (2013).
- 33 Cassada, R. C. & Russell, R. L. The dauerlarva, a post-embryonic developmental variant of the nematode *Caenorhabditis elegans*. *Developmental Biology* **46**, 326-342, doi:0012-1606(75)90109-8 [pii] (1975).

- 34 Schwarz, J., Lewandrowski, I. & Bringmann, H. Reduced activity of a sensory neuron during a sleep-like state in *Caenorhabditis elegans*. *Current Biology* **21**, R983-984, doi:S0960-9822(11)01207-3 [pii]10.1016/j.cub.2011.10.046 (2011).
- 35 Schwarz, J., Spies, J. P. & Bringmann, H. Reduced muscle contraction and a relaxed posture during sleep-like Lethargus. *Worm* **1**, 12-14, doi:10.4161/worm.19499 (2012).
- 36 Schwarz, J. & Bringmann, H. Reduced sleep-like quiescence in both hyperactive and hypoactive mutants of the Galphaq Gene egl-30 during lethargus in *Caenorhabditis elegans*. *PLoS One* **8**, e75853, doi:10.1371/journal.pone.0075853 (2013).

Figure 1
Click here to download Figure: Figure 1.pdf

Figure 1, Turek et al.

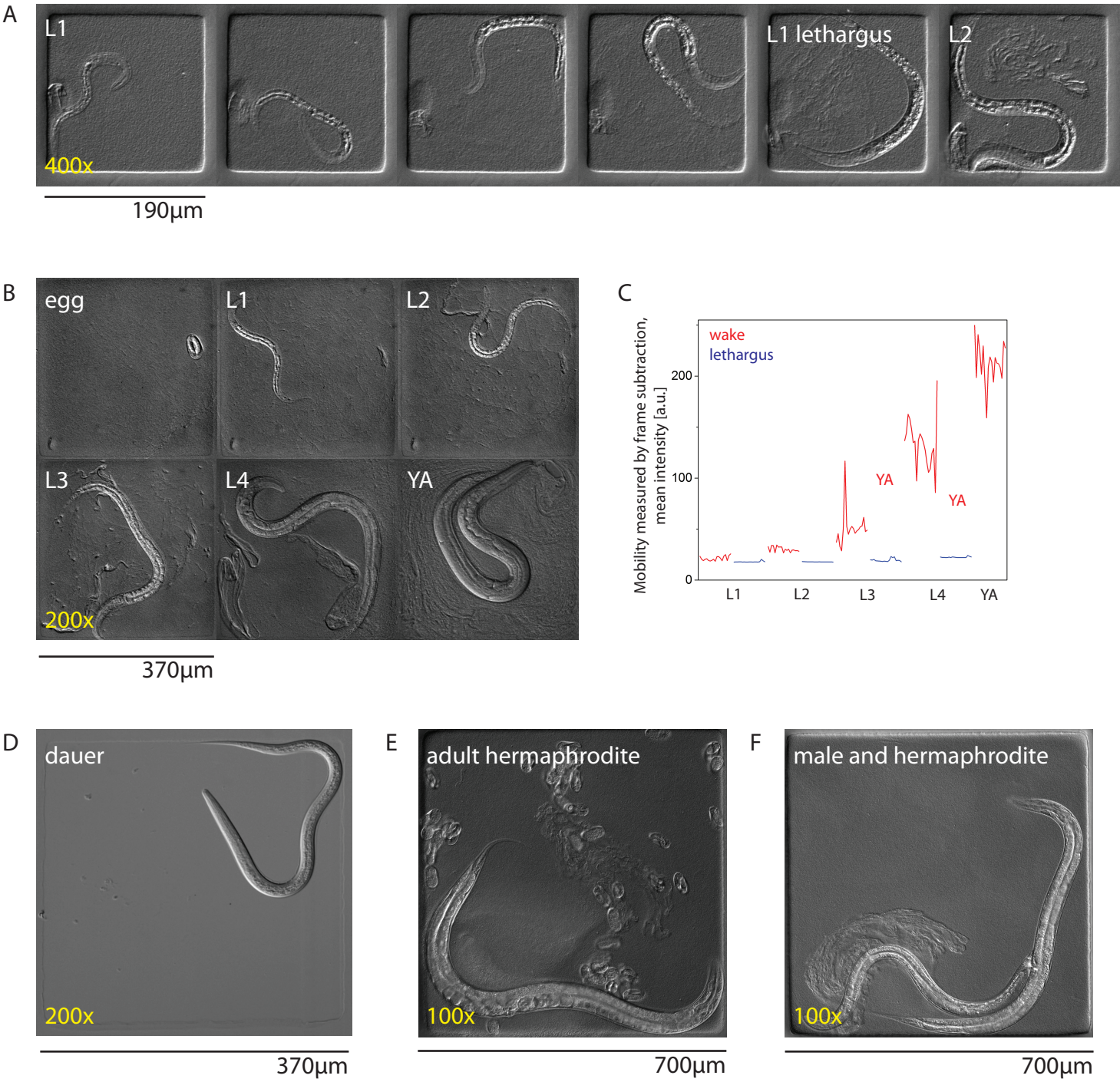
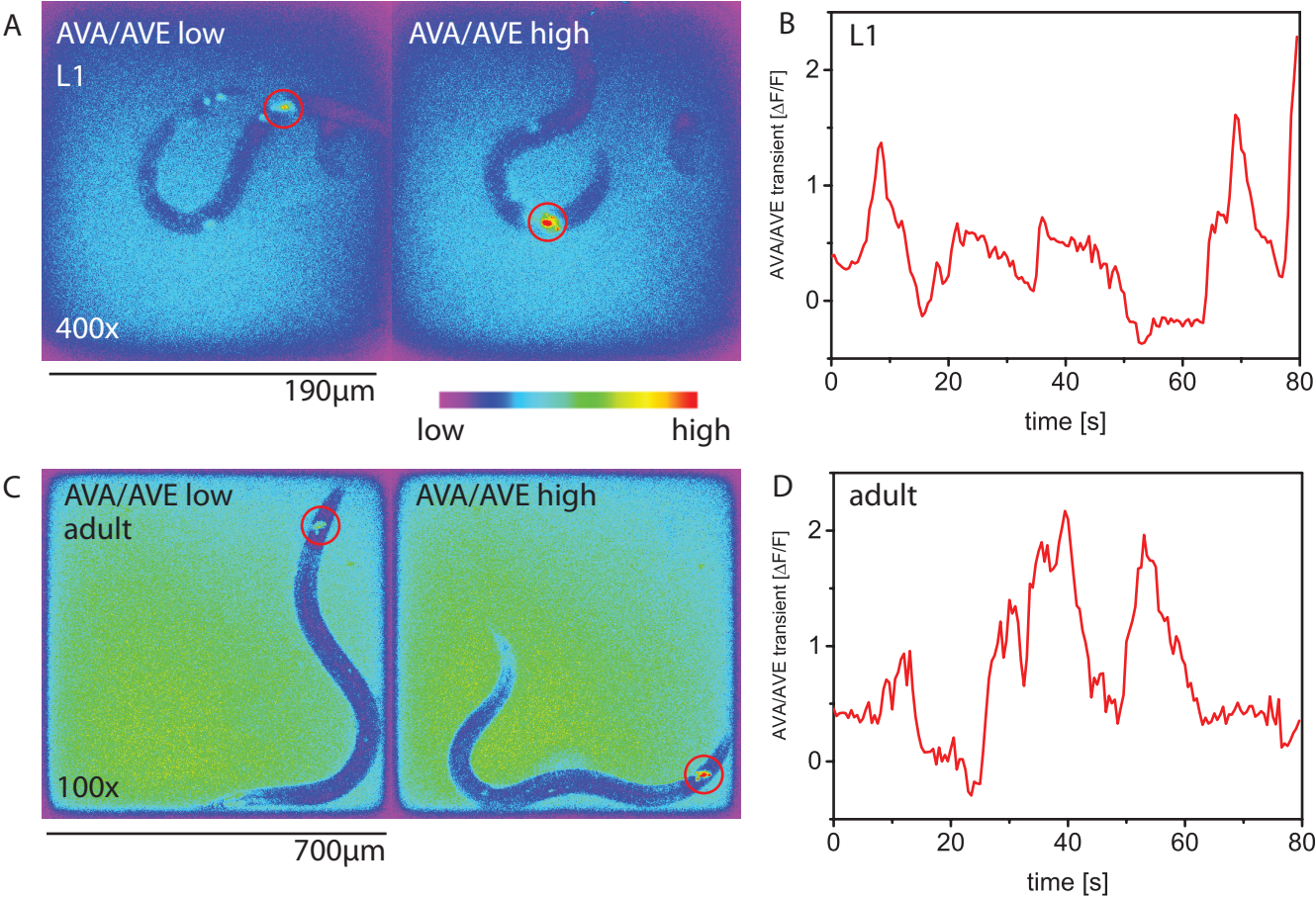


Figure 2
[Click here to download Figure: Figure 2.pdf](#)
Figure 2, Turek et al.



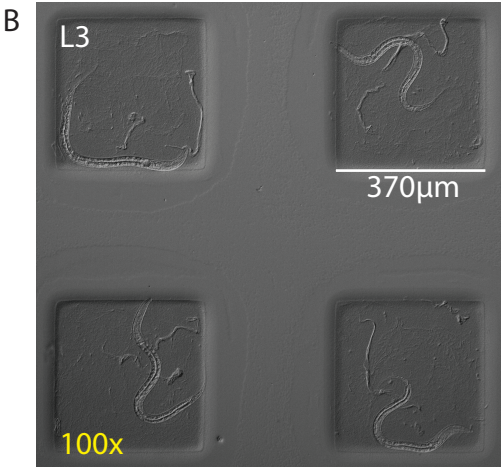
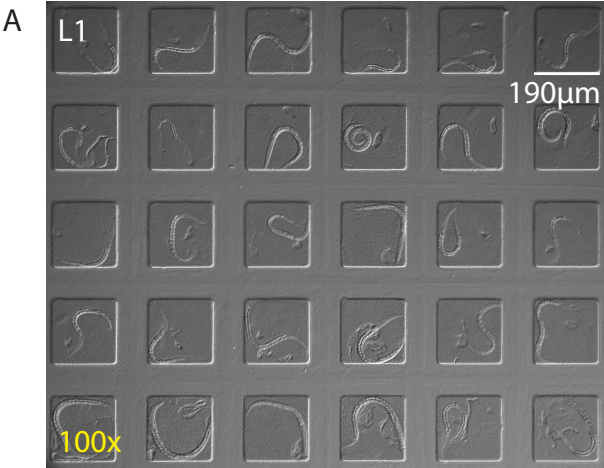


Table 1
[Click here to download Table: table1.xlsx](#)

Life stage	Chamber size	Chamber depth	Typical recording time	Magnification
L1	190 x 190 μm	10 - 15 μm	egg - mid L2	400 x
L2	370 x 370 μm	15 μm	egg - L3	200 x
Dauer larva	370 x 370 μm	25 μm	4 days	200 x
L3	700 x 700 μm	45 μm	L2 - L4	200 x
L4	700 x 700 μm	45 μm	young L4 - young adult	100 x
Young adult	700 x 700 μm	45 μm	12-24 h	100 x

Name of Material/ Equipment	Company	Catalog Number	Comments/Description
high-melting point agarose	Fisher Bioreagent	BP(E)164-1000	
Top Vision Low Melting Point Agarose	Thermo Scientific	R0801	
LED system	CoolLED	pE-2	
compound microscope	Nikon	TiE	
stereomicroscope	Leica	M5	
EMCCD camera	Andor	iXon 897	now sold as iXon Ultra 897
sCMOS camera	Andor	Neo	
plasma cleaner	Harrick	PDC-23G2	
lid heater	MPI workshop	custom made	
plastic dish	Falcon	08-757-100A	
z-stage for the microscope	Prior	Nano Scan Z	
x-y-stage for the microscope	Prior	Proscan III	
	Abbott		
PDMS stamp	Laboratories	custom made	
red light filter	Chroma	ET660/50m	
35mm petri dish	Falcon	Falcon Disposable Petri Dishes, Sterile, Corning	
		double sided	
double sided sticky tape	Sellotape/Henkel	12mm x 33 m	alternatively Advance double sided sticky tape from Rubance Adhesives

esives can be used.



1 Alewife Center #200
Cambridge, MA 02140
tel. 617.945.9051
www.jove.com

ARTICLE AND VIDEO LICENSE AGREEMENT

Title of Article: Agarose microchambers for long-term calcium imaging of *Caenorhabditis elegans*
Author(s): Michal Turek, Judith Besseling, Henrik Bringmann

Item 1 (check one box): The Author elects to have the Materials be made available (as described at <http://www.jove.com/publish>) via: ☐ Standard Access ☒ Open Access

Item 2 (check one box):

☒ The Author is NOT a United States government employee.

The Author is a United States government employee and the Materials were prepared in the course of his or her duties as a United States government employee.

☐ The Author is a United States government employee but the Materials were NOT prepared in the course of his or her duties as a United States government employee.

ARTICLE AND VIDEO LICENSE AGREEMENT

1. Defined Terms As used in this Article and Video License Agreement, the following terms shall have the following meanings: "Agreement" means this Article and Video License Agreement; "Article" means the article specified on the last page of this Agreement including any associated materials such as texts, figures, tables, artwork, abstracts, or summaries contained therein; "Author" means the author who is a signatory to this Agreement; "Collective Work" means a work, such as a periodical issue, anthology or encyclopedia, in which the Materials in their entirety in unmodified form, along with a number of other contributions, constituting separate and independent works in themselves, are assembled into a collective whole; "CRC License" means the Creative Commons Attribution-Non Commercial-No Derivs 3.0 Unported Agreement, the terms and conditions of which can be found at: <http://creativecommons.org/licenses/by-nc-nd/3.0/legalcode>; "Derivative Work" means a work based upon the Materials or upon the Materials and other pre-existing works, such as a translation, musical arrangement, dramatization, fictionalization, motion picture version, sound recording, art reproduction, abridgment, condensation, or any other form in which the Materials may be recast, transformed, or adapted; "Institution" means the institution, listed on the last page of this Agreement, by which the Author was employed at the time of the creation of the Materials; "JoVE" means MyJoVE Corporation, a Massachusetts corporation and the publisher of The Journal of Visualized Experiments; "Materials" means the Article and / or the Video; "Parties" means the Author and JoVE; "Video" means any video(s) made by the Author, alone or in conjunction with any other parties, or by JoVE or its affiliates or agents, individually or in collaboration with the Author or any other parties, incorporating all or any portion of the Article, and in which the Author may or may not appear.

2. Background The Author, who is the author of the Article, in order to ensure the dissemination and protection of the Article, desires to have the JoVE publish the Article and create and transmit videos based on the Article. In furtherance of such goals, the Parties desire to memorialize in this Agreement the respective rights of each Party in and to the Article and the Video.

3. Grant of Rights in Article In consideration of JoVE agreeing to publish the Article, the Author hereby grants to JoVE, subject to Sections 4 and 7 below, the exclusive, royalty-free, perpetual (for the full term of copyright in the Article, including any extensions thereto) license (a) to publish, reproduce, distribute, display and store the Article in all forms, formats and media whether now known or hereafter developed (including without limitation in print, digital and electronic form) throughout the world, (b) to translate the Article into other languages, create adaptations, summaries or extracts of the Article or other Derivative Works (including, without limitation, the Video) or Collective Works based on all or any portion of the Article and exercise all of the rights set forth in (a) above in such translations, adaptations, summaries, extracts, Derivative Works or Collective Works and (c) to license others to do any or all of the above. The foregoing rights may be exercised in all media and formats, whether now known or hereafter devised, and include the right to make such modifications as are technically necessary to exercise the rights in other media and formats. If the "Open Access" box has been checked in item 1 above, JoVE and the Author hereby grant to the public all such rights in the Article as provided in, but subject to all limitations and requirements set forth in, the CRC License.

ARTICLE AND VIDEO LICENSE AGREEMENT

4. Retention of Rights in Article Notwithstanding the exclusive license granted to JoVE in Section 3 above, the Author shall, with respect to the Article, retain the non-exclusive right to use all or part of the Article for the non-commercial purpose of giving lectures, presentations or teaching classes, and to post a copy of the Article on the Institution's website or the Author's personal website, in each case provided that a link to the Article on the JoVE website is provided and notice of JoVE's copyright in the Article is included. All non-copyright intellectual property rights in and to the Article, such as patent rights, shall remain with the Author.

5. Grant of Rights in Video – Standard Access This Section 5 applies if the "Standard Access" box has been checked in Item 1 above or if no box has been checked in Item 1 above. In consideration of JoVE agreeing to produce, display or otherwise assist with the Video, the Author hereby acknowledges and agrees that Subject to Section 7 below, JoVE is and shall be the sole and exclusive owner of all rights of any nature, including, without limitation, all copyrights, in and to the Video. To the extent that, by law, the Author is deemed, now or at any time in the future, to have any rights of any nature in or to the Video, the Author hereby disclaims all such rights and transfers all such rights to JoVE.

6. Grant of Rights in Video – Open Access This Section 6 applies only if the "Open Access" box has been checked in Item 1 above. In consideration of JoVE agreeing to produce, display or otherwise assist with the Video, the Author hereby grants to JoVE, subject to Section 7 below, the exclusive, royalty-free, perpetual (for the full term of copyright in the Article, including any extensions thereto) license (a) to publish, reproduce, distribute, display and store the Video in all forms, formats and media whether now known or hereafter developed (including without limitation in print, digital and electronic form) throughout the world, (b) to translate the Video into other languages, create adaptations, summaries or extracts of the Video or other Derivative Works or Collective Works based on all or any portion of the Video and exercise all of the rights set forth in (a) above in such translations, adaptations, summaries, extracts, Derivative Works or Collective Works and (c) to license others to do any or all of the above. The foregoing rights may be exercised in all media and formats, whether now known or hereafter devised, and include the right to make such modifications as are technically necessary to exercise the rights in other media and formats. For any Video to which this Section 6 is applicable, JoVE and the Author hereby grant to the public all such rights in the Video as provided in, but subject to all limitations and requirements set forth in, the CRC License.

7. Government Employees If the Author is a United States government employee and the Article was prepared in the course of his or her duties as a United States government employee, as indicated in Item 2 above, and any of the licenses or grants granted by the Author hereunder exceed the scope of the 17 U.S.C. 403, then the rights granted hereunder shall be limited to the maximum rights permitted under such

statute. In such case, all provisions contained herein that are not in conflict with such statute shall remain in full force and effect, and all provisions contained herein that do so conflict shall be deemed to be amended so as to provide to JoVE the maximum rights permissible within such statute.

8. Likeness, Privacy, Personality The Author hereby grants JoVE the right to use the Author's name, voice, likeness, picture, photograph, image, biography and performance in any way, commercial or otherwise, in connection with the Materials and the sale, promotion and distribution thereof. The Author hereby waives any and all rights he or she may have, relating to his or her appearance in the Video or otherwise relating to the Materials, under all applicable privacy, likeness, personality or similar laws.

9. Author Warranties The Author represents and warrants that the Article is original, that it has not been published, that the copyright interest is owned by the Author (or, if more than one author is listed at the beginning of this Agreement, by such authors collectively) and has not been assigned, licensed, or otherwise transferred to any other party. The Author represents and warrants that the author(s) listed at the top of this Agreement are the only authors of the Materials. If more than one author is listed at the top of this Agreement and if any such author has not entered into a separate Article and Video License Agreement with JoVE relating to the Materials, the Author represents and warrants that the Author has been authorized by each of the other such authors to execute this Agreement on his or her behalf and to bind him or her with respect to the terms of this Agreement as if each of them had been a party hereto as an Author. The Author warrants that the use, reproduction, distribution, public or private performance or display, and/or modification of all or any portion of the Materials does not and will not violate, infringe and/or misappropriate the patent, trademark, intellectual property or other rights of any third party. The Author represents and warrants that it has and will continue to comply with all government, institutional and other regulations, including, without limitation all institutional, laboratory, hospital, ethical, human and animal treatment, privacy, and all other rules, regulations, laws, procedures or guidelines applicable to the Materials, and that all research involving human and animal subjects has been approved by the Author's relevant institutional review board.

10. JoVE Discretion If the Author requests the assistance of JoVE in producing the Video in the Author's facility, the Author shall ensure that the presence of JoVE employees, agents or independent contractors is in accordance with the relevant regulations of the Author's institution. If more than one author is listed at the beginning of this Agreement, JoVE may, in its sole discretion, elect not to take any action with respect to the Article until such time as it has received complete, executed Article and Video License Agreements from each such author. JoVE reserves the right, in its absolute and sole discretion and without giving any reason therefore, to accept or decline any work submitted to JoVE. JoVE and its employees, agents and independent contractors shall have

ARTICLE AND VIDEO LICENSE AGREEMENT

full, unfettered access to the facilities of the Author or of the Author's institution as necessary to make the Video, whether actually published or not. JoVE has sole discretion as to the method of making and publishing the Materials, including, without limitation, to all decisions regarding editing, lighting, filming, timing of publication, if any, length, quality, content and the like.

11. Indemnification. The Author agrees to indemnify JoVE and/or its successors and assigns from and against any and all claims, costs, and expenses, including attorney's fees, arising out of any breach of any warranty or other representations contained herein. The Author further agrees to indemnify and hold harmless JoVE from and against any and all claims, costs, and expenses, including attorney's fees, resulting from the breach by the Author of any representation or warranty contained herein or from allegations or instances of violation of intellectual property rights, damage to the Author's or the Author's institution's facilities, fraud, libel, defamation, research, equipment, experiments, property damage, personal injury, violations of institutional, laboratory, hospital, ethical, human and animal treatment, privacy or other rules, regulations, laws, procedures or guidelines, liabilities and other losses or damages related in any way to the submission of work to JoVE, making of videos by JoVE, or publication in JoVE or elsewhere by JoVE. The Author shall be responsible for, and shall hold JoVE harmless from, damages caused by lack of sterilization, lack of cleanliness or by contamination due to the making of a video by JoVE's employees, agents or independent contractors. All sterilization, cleanliness or decontamination procedures shall be solely the responsibility of the Author and shall be undertaken at the Author's

expense. All indemnifications provided herein shall include JoVE's attorney's fees and costs related to said losses or damages. Such indemnification and holding harmless shall include such losses or damages incurred by, or in connection with, acts or omissions of JoVE, its employees, agents or independent contractors.

12. Fees. To cover the cost incurred for publication, JoVE must receive payment before production and publication of the Materials. Payment is due in 21 days of invoice. Should the Materials not be published due to an editorial or production decision, these funds will be returned to the Author. Withdrawal by the Author of any submitted Materials after final peer review approval will result in a US\$1,200 fee to cover pre-production expenses incurred by JoVE. If payment is not received by the completion of filming, production and publication of the Materials will be suspended until payment is received.

13. Transfer, Governing Law. This Agreement may be assigned by JoVE and shall inure to the benefits of any of JoVE's successors and assignees. This Agreement shall be governed and construed by the internal laws of the Commonwealth of Massachusetts without giving effect to any conflict of law provision thereunder. This Agreement may be executed in counterparts, each of which shall be deemed an original, but all of which together shall be deemed to be one and the same agreement. A signed copy of this Agreement delivered by facsimile, e-mail or other means of electronic transmission shall be deemed to have the same legal effect as delivery of an original signed copy of this Agreement.

A signed copy of this document must be sent with all new submissions. Only one Agreement required per submission.

CORRESPONDING AUTHOR:

Name: Henrik Bringmann
Department: Sleep and Wake
Institution: Max Planck Institute for Biophysical Chemistry
Article Title: Agarose microchambers for long-term calcium imaging of *Caenorhabditis*

Signature:



Date:

26 Sept 2014

Please submit a signed and dated copy of this license by one of the following three methods:

- 1) Upload a scanned copy of the document as pdf on the JoVE submission site;
- 2) Fax the document to +1.866.381.2236;
- 3) Mail the document to JoVE / Attn: JoVE Editorial / 1 Alewife Center #200 / Cambridge, MA 02139

For questions, please email submissions@jove.com or call +1.617.945.9051

Dear Dr. Zaman,

Thank you for sending our manuscript for review. We have attached a modified version of our manuscript that addresses all comments. Please find a point-by-point response to the comments below.

Regards,

Henrik Bringmann

Dear Dr. Bringmann,

Your manuscript JoVE52742R1 "Agarose microchambers for long-term calcium imaging of *Caenorhabditis elegans*" has been peer-reviewed and the following comments need to be addressed.

Please keep JoVE's formatting requirements and the editorial comments from previous revisions in mind as you revise the manuscript to address peer review comments. Please maintain these overall manuscript changes, *e.g.*, if formatting or other changes were made, commercial language was removed, *etc.*

Please track the changes in your word processor (*e.g.*, Microsoft Word) or change the text color to identify all of the manuscript edits. When you have revised your submission, please also upload a separate document listing all of changes that address each of the editorial and peer review comments individually with the revised manuscript. Please provide either (1) a description of how the comment was addressed within the manuscript or (2) a rebuttal describing why the comment was not addressed if you feel it was incorrect or out of the scope of this work for publication in JoVE.

Your revision is due by Jan 19, 2015. Please note that due to the high volume of JoVE submissions, failure to meet this deadline will result in publication delays.

To submit a revision, go to the [JoVE Submission Site](#) and log in as an author. You will find your submission under the heading 'Submission Needing Revision'.

Sincerely,

Sephora Zaman, Ph.D.
Science Editor

[JoVE](#)

1 Alewife Center, Suite 200, Cambridge, MA 02140
tel: 16176741888



Editorial comments:

1) All of your previous revisions have been incorporated into the most recent version of the manuscript. On the JoVE submission site, you can find the updated manuscript under "file inventory" and download the microsoft word document. Please use this updated version for any future revisions.

Authors:

We have used this file as a template

2) Please upload Table 1 as an Excel file to the JoVE submission site, instead of a Word document.

Authors:

We have changed this file to Excel format.

3) In step 1.1, are manufacturer's instructions used to set up the LED-EMCCD camera system? If so, please include the words, "using manufacturer's instructions" in this step.

Authors:

We have added these words.

4) In step 1.2.1, please include the depth of your device, as an example.

Authors:

We have added this information.

5) In Line 218: Should be Fig 2C instead of 2B.

Authors:

We have changed this.

5) Throughout the protocol section, introductory phrases (such as "Microscope setup:" in step 1.1) were removed to comply with the JoVE format. If these phrases are added to the protocol, then they must form a numbered protocol step (increasing the total length of the protocol to over 3 pages). For example:

1. Instruments, Culture Media and Dishes

1.1) Microscope setup

1.1.1) Use a microscope..

Authors:

We have noticed this change.

6) Please be consistent with journal title formatting in your references.

Authors:

We reformatted some of the journal titles.

7) JoVE reference format requires that DOIs are included, when available, for all references listed in the article. This is helpful for readers to locate the included references and obtain more information. Please note that often DOIs are not listed with PubMed abstracts and as such, may not be properly included when citing directly from PubMed. In these cases, please manually include DOIs in reference information.

Authors:

We included the DOIs as far as they were available.

Reviewers' comments:

Reviewer #1:

Manuscript Summary:

In this work, the authors present a short introduction to a technique that they had developed and previously described, namely the use of agarose microchambers (AMIs) for studies of the *C. elegans* nervous system; they also give a practical description of how to perform imaging in AMIs and a discussion of future possibilities and limitations. Previously, AMIs had been used only in studies of larval development or behavior (especially of "lethargus" sleep-like behavior), while the authors now show that it can also be used to record neural activity or behavior in adults.

Imaging of *C. elegans* using AMIs allows to combine high-resolution and (to some extent) high-throughput imaging of the nervous system with recording behavioral responses, which makes it a powerful addition to the arsenal of tools available in worms. The assembly of the imaging chambers appears to require care and will clearly benefit from a visual demonstration, as in my opinion it seems to be difficult to reproduce from a written description alone.

Major Concerns:

None

Minor Concerns:

- In the protocol text, a section describing the strains used is missing. There

should also be a description (or reference) of the frame subtraction method for determining worm mobility in the protocol section, as well as for the presentation of the calcium imaging results; how was the baseline of $\Delta F/F$ defined in figs. 2B and D?

Authors:

We added a section describing the fluorescent strain, frame subtraction with references, and for presentation of calcium imaging results.

- It would be helpful to know which objectives the authors had been using, in addition to (or instead of) the total magnification. How was the total magnification achieved - was there a magnifying video coupler in the light path? For example, how was a 140x magnification achieved (line 314)?

Also, the magnification stated does not correspond to the images shown. For example, in figure 3B, the scale bar is ca. 18.5 μm long - i.e. it is 50x magnified from the stated 370 μm , while the caption says it is 100x magnified.

Authors:

We refer to the magnification by the microscope not the print out, which is standard in the field. We now state the magnification of the objective in the text which should prevent such misunderstandings.

- When performing Ca^{2+} imaging, especially when using the GCaMP sensor, is there a problem in these chambers with the neurons going out of focus?

Authors:

We have not found this to be a problem. We state now in the text that in case this is a problem for some other neurons a z scan can be used to always obtain fluorescence data.

- The authors say that when scanning multiple worms the movement of the motorised stage should be set to a slow speed to prevent disturbing the worms, i.e. to prevent a response to this mechanical stimulus. Does a slow scan speed indeed completely suppress a mechanosensitive response?

Authors:

We could not find a mechansensitive response and state this clearly now.

- The authors write in the discussion section that the chamber cavity is to be filled with a bacterial suspension that should be liquid, not too viscous or solid. Most behaviors in *C. elegans* are studied while the animals move on a quite solid agar surface, and the animals behave very differently when placed in liquid. Given that the environment in the agarose microchamber is (mostly) liquid, is the behavior of the worms in a microchamber akin to thrashing in a liquid environment or does it resemble crawling on a solid surface?

Authors:

We added a sentence that states that worms are in physical contact with a surface and that their crawling is similar to that on the plate.

- In discussing the limitations of the technique, it should be mentioned that it will be difficult to expose the *C. elegans* placed into the microchambers to most sensory stimuli. Also, I expect that the worms and bacteria sealed into these chambers, which are both alive and consuming oxygen, will quickly create a hypoxic environment, which will have considerable effect on the worms' physiology - this should be discussed as well.

Authors:

We added comments to the discussion to address this point.

- It may be helpful to provide a brief comparison with long-term culture of *C. elegans* in microfluidic microchambers made of PDMS.

Authors:

We now briefly mention the use of PDMS devices for microfluidics and refer to a recent review that nicely summarizes these technologies.

Additional Comments to Authors:

Line 52: Principal, not principle

Authors:

Corrected.

Line 68: In my opinion FRET is an acronym for "Förster Resonance Energy Transfer", not "Fluorescence Resonance Energy Transfer".

Authors:

We now use this alternative term in the new version of our manuscript.

Line 147: What is the purpose of exposing the PDMS surface to air plasma here, if not for bonding to a glass slide (section 1.2.2)?

Authors:

We added a note stating that this treatment makes the PDMS hydrophilic.

Sections 4. and 5. (Lines 176 to 194): I would talk about calcium imaging first, as it is slightly confusing how the information on frame rates etc. is split up between the two sections.

Authors:

We swapped sections 4 and 5.

Line 218: This should be Figure 2C, not 2B.

Authors:

We changed this.

Line 232: Mean intensity - of all pixels of the image?

Authors:

Yes, we added this information.

Figure 1: I don't understand the meaning of the two red "YA" labels placed in the figure.

Authors:

We added the information that YA means young adult.

Figure 2: There should be a scale bar to correlate the false colors with $\Delta F/F$.

Authors:

We added the scale bar.

Reviewer #2:

No edits- accept in its current state.

Reviewer #3:

Manuscript Summary:

This work describes construction and use of an agarose chamber that allows (scalable) imaging of worms (and expression signals) over relatively long times. This sort of development is necessary to move *C. elegans* beyond a system with only a series of short term measurements. The discussion of practical considerations was very helpful.

Major Concerns:

None

Minor Concerns:

There are a few almost trivial descriptions that nevertheless might lead to some problems with creating the chambers and executing the experiments. They should be checked for these. An example is 'sticky tape'. This could easily be listed in the equipment list. Also, could an 'architect's diagram' of the chambers be included?

Authors:

We added the brand name for the sticky tape to the materials list. We would suggest that a cartoon (architect's diagram) should be added to the movie to help understand the process.

marked changes (as requested by JoVE)

[Click here to download Supplemental File \(as requested by JoVE\): compare documents.docx](#)