

Journal of Visualized Experiments

Viral-mediated labeling and transplantation of medial ganglionic eminence (MGE) cells for in vivo studies --Manuscript Draft--

Manuscript Number:	JoVE52740R2
Full Title:	Viral-mediated labeling and transplantation of medial ganglionic eminence (MGE) cells for in vivo studies
Article Type:	Invited Methods Article - JoVE Produced Video
Keywords:	MGE; interneuron; Transplantation; lentivirus; cell labeling; somatostatin; Cre
Manuscript Classifications:	6.3: Mental Disorders; 95.51: Life Sciences (General)
Corresponding Author:	Daniel Vogt University of California San Francisco San Francisco, CA UNITED STATES
Corresponding Author Secondary Information:	
Corresponding Author E-Mail:	daniel.vogt@ucsf.edu
Corresponding Author's Institution:	University of California San Francisco
Corresponding Author's Secondary Institution:	
First Author:	Daniel Vogt
First Author Secondary Information:	
Other Authors:	Pei-Rung Wu
	Shawn F Sorrells
	Christine Arnold
	Arturo Alvarez-Buylla
	John L R Rubenstein
Order of Authors Secondary Information:	
Abstract:	<p>GABAergic cortical interneurons, derived from the embryonic medial and caudal ganglionic eminences (MGE and CGE), are functionally and morphologically diverse. Inroads have been made in understanding the roles of distinct cortical interneuron subgroups, however, there are still many mechanisms to be worked out that may contribute to the development and maturation of different types of GABAergic cells. Moreover, altered GABAergic signaling may contribute to phenotypes of autism, schizophrenia and epilepsy. Specific Cre-driver lines have begun to parcel out the functions of unique interneuron subgroups. Despite the advances in mouse models, it is often difficult to efficiently study GABAergic cortical interneuron progenitors with molecular approaches in vivo. One important technique used to study the cell autonomous programming of these cells is transplantation of MGE cells into host cortices. These transplanted cells migrate extensively, differentiate, and functionally integrate. In addition, MGE cells can be efficiently transduced with lentivirus immediately prior to transplantation, allowing for a multitude of molecular approaches. Here we detail a protocol to efficiently transduce MGE cells before transplantation for in vivo analysis, using available Cre-driver lines and Cre-dependent expression vectors. This approach is advantageous because it combines precise genetic manipulation with the ability of these cells to disperse after transplantation, permitting greater cell-type specific resolution in vivo.</p>
Author Comments:	

Additional Information:	
Question	Response
If this article needs to be "in-press" by a certain date to satisfy grant requirements, please indicate the date below and explain in your cover letter.	
If this article needs to be filmed by a certain date to due to author/equipment/lab availability, please indicate the date below and explain in your cover letter.	

Dear Editors,

We were invited by Kim Wagner to submit a protocol describing how to efficiently transduce GABAergic inhibitory neuron precursors before transplantation into a wild type host for *in vivo* analysis. We are enthusiastic about this opportunity to share our approach in a unique video format that we believe will aid researchers interested in using transplantation to study the processes of GABAergic interneuron development.

Herein, we detail a protocol to efficiently genetically modify GABAergic cortical interneurons with lentiviruses before transplantation for *in vivo* studies. We modeled this assay with cells derived from the embryonic medial ganglionic eminence (MGE). The MGE gives rise to the majority of cortical GABAergic interneurons, which are implicated in phenotypes underlying autism, schizophrenia, and epilepsy. MGE cells are unique, because after transplantation into a host brain, they disperse and integrate in the host brain in a cell autonomous manner. MGE transplantation, and the genetic manipulation of MGE cells, is becoming a highly utilized technique and we believe that JoVE's video format will be able to elucidate how to perform these procedures in a simplified manner.

Our protocol describes two methods. First, we provide a description of steps to do transplantations of embryonic MGE cells into neonatal host cortices. Second, we show how lentiviruses can be used to quickly transduce the MGE cells before transplantation, allowing for genetic modification of these cells before transplantation for *in vivo* studies. We also show an application of this approach, using a combination of available Cre-driver mice and a Cre-dependent reporter lentivirus to express a gene of interest in specific cell lineages. We propose that this protocol will be of benefit to many labs studying both GABAergic neuron development and neuropsychiatric disorders.

Author contributions

Daniel Vogt: Wrote manuscript and performed experiments

Pei-Rung Wu: Wrote manuscript and performed experiments

Shawn Sorrells: Provided data and images, and also wrote manuscript

Christine Arnold: Provided data and images

Arturo Alvarez-Buylla: Wrote manuscript

John Rubenstein: Wrote manuscript

Title:
Viral-mediated labeling and transplantation of medial ganglionic eminence (MGE) cells for *in vivo* studies

Authors:
Daniel Vogt, Pei-Rung Wu, Shawn F. Sorrells, Christine Arnold, Arturo Alvarez-Buylla, John L. R. Rubenstein

Authors: institution(s)/affiliation(s) for each author:
Daniel Vogt
Department of Psychiatry,
University of California San Francisco,
San Francisco, CA, USA. 94158.
daniel.vogt@ucsf.edu

Pei-Rung Wu
Department of Psychiatry,
University of California San Francisco,
San Francisco, CA, USA. 94158.
pei-rung.wu@ucsf.edu

Shawn F. Sorrells
Department of Neurological Surgery,
University of California San Francisco,
San Francisco, CA, USA. 94143.
shawn.sorrells@ucsf.edu

Christine Arnold
Department of Neurological Surgery
University of California San Francisco,
San Francisco, CA, USA. 94143.
christine.arnold@ucsf.edu

Arturo Alvarez-Buylla
Department of Neurological Surgery,
University of California San Francisco,
San Francisco, CA, USA. 94143.
abuylla@stemcell.ucsf.edu

John L. R. Rubenstein
Department of Psychiatry,
University of California San Francisco,
San Francisco, CA, USA. 94158.
john.rubenstein@ucsf.edu

Corresponding authors:

Daniel Vogt
Department of Psychiatry,
University of California San Francisco,
San Francisco, CA, USA. 94158.
daniel.vogt@ucsf.edu

John L. R. Rubenstein
Department of Psychiatry,
University of California San Francisco,
San Francisco, CA, USA. 94158.
john.rubenstein@ucsf.edu

Keywords:

MGE, interneuron, transplantation, lentivirus, cell labeling, somatostatin, Cre

Short Abstract:

GABAergic cortical interneuron progenitors disperse, develop and synaptically integrate into a host cortex after transplantation. These cells can be easily transduced before transplantation for *in vivo* studies of genetically modified GABAergic precursors. Here, we show viral labeling techniques to target specific interneuron subgroups using existing Cre lines and Cre-dependent reporters.

Long Abstract:

GABAergic cortical interneurons, derived from the embryonic medial and caudal ganglionic eminences (MGE and CGE), are functionally and morphologically diverse. Inroads have been made in understanding the roles of distinct cortical interneuron subgroups, however, there are still many mechanisms to be worked out that may contribute to the development and maturation of different types of GABAergic cells. Moreover, altered GABAergic signaling may contribute to phenotypes of autism, schizophrenia and epilepsy. Specific Cre-driver lines have begun to parcel out the functions of unique interneuron subgroups. Despite the advances in mouse models, it is often difficult to efficiently study GABAergic cortical interneuron progenitors with molecular approaches *in vivo*. One important technique used to study the cell autonomous programming of these cells is transplantation of MGE cells into host cortices. These transplanted cells migrate extensively, differentiate, and functionally integrate. In addition, MGE cells can be efficiently transduced with lentivirus immediately prior to transplantation, allowing for a multitude of molecular approaches. Here we detail a protocol to efficiently transduce MGE cells before transplantation for *in vivo* analysis, using available Cre-driver lines and Cre-dependent expression vectors. This approach is advantageous because it combines precise genetic manipulation with the ability of these cells to disperse after transplantation, permitting greater cell-type specific resolution *in vivo*.

Introduction:

GABAergic cortical interneurons comprise ~20-30% of neurons in the mammalian neocortex, while the rest correspond to excitatory, glutamatergic principal neurons. Interneurons are highly diverse in electrophysiological properties, axon and dendrite morphology and synaptic targeting

¹, and imbalances in excitatory/inhibitory tone are hypothesized to underlie some phenotypes of neurological/neuropsychiatric disorders including autism, schizophrenia and epilepsy ². The overall goal of the protocol described herein is to provide a means to efficiently genetically modify GABAergic cortical interneuron progenitors before transplantation for *in vivo* analyses.

Cortical GABAergic interneurons are born in the medial and caudal ganglionic eminences (MGE and CGE, respectively) ^{3,4} as well as the preoptic area ⁵. Cortical interneuron progenitors undergo long-distance tangential migration followed by radial migration to reach their final targets. Upon arrival at their destinations, these cortical interneurons must correctly integrate into the existing neuronal network, and each unique interneuron subgroup will contribute to cortical circuitry in specific ways. Four main subgroups can be distinguished by molecular markers: MGE-derived somatostatin (SST)⁺ and parvalbumin (PV)⁺ subgroups, and CGE-derived vasoactive intestinal peptide (VIP)⁺ and Reelin⁺;SST⁻ subgroups ⁶. Different cortical interneuron subgroups are born over different times during embryonic development in the MGE and CGE ^{7, 8}. These and other cortical GABAergic interneuron markers have been used to generate specific Cre-driver lines for many of these subgroups ⁹⁻¹¹.

The transplantation of MGE progenitors has emerged as a potential cell-based therapy to treat disorders that may be caused by imbalances in excitation/inhibition ¹²⁻²⁴. These therapeutic benefits may be due in part to the unique ability of MGE progenitors (to disperse, differentiate and integrate into a host brain), or potentially because many peri-somatic inhibitory PV⁺ cells are derived from the MGE. MGE cells can also be quickly and efficiently transduced with lentiviruses before transplantation ¹⁵, allowing cells that are genetically modified *in vitro* to be studied *in vivo*. The rationale for developing this approach was to overcome roadblocks in studying GABAergic cortical interneuron development and maturation. In particular, MGE transplantation allowed researchers to study the development of mutant cells *in vivo*, when the mutant mouse would have otherwise died at an early time point. Moreover, by introducing genes of interest before transplantation, the effects of specific genes on a mutant phenotype could be assessed in an efficient manner.

Here, we provide a detailed protocol to transduce MGE cells with lentiviruses prior to transplantation. In addition, we show how this technique can be adapted to express a gene of interest in specific interneuron subgroups from a heterogeneous group of cortical interneuron precursors, using a combination of Cre-dependent expression lentiviruses and available Cre-driver mouse lines. Moreover, this protocol introduces techniques and a platform for researchers to genetically modify GABAergic cortical interneuron precursors for *in vivo* studies in a unique way. One advantage of this technique over other current approaches is that the transplanted MGE cells will disperse away from the injection site. Also, unlike focal viral injections, after MGE cells disperse their morphology is easier to assess. This approach can be used to study the effect of introducing genes of interest into wild type or mutant cells, introducing a cell type specific reporter to assess morphology, or potentially to study the effect of disease alleles *in vivo*.

Protocol Text:

Ethics statement: The following procedures have been approved by our institution and animal protocol. Make sure to get approval for all procedures involving survival surgeries before beginning experiments and verify all protocols are up to date.

1. Lentivirus preparation (optional step)

1.1) Split three 10 cm plates of HEK293T cells for each lentivirus to be made, in the presence of 10 ml DMEM/10% FBS, and grow to ~60-70% confluence. Grow cells in an incubator at 37 °C with 5% CO₂.

1.2) Transfect the following DNA plasmids (20 µg total) into each plate using any transfection reagent: 6.4 µg CAG-Flex-GFP lentiviral vector (DNA vector sequence provided in Table 1), 1.2 µg pMD2.G (encodes VSV-g), 1.2 µg pRSV-Rev, and 1.2 µg pMDLg/pRRE. The three lentiviral packaging vectors are commercially available (Table 2).

Note: this particular approach utilizes 3rd generation lentiviral vectors but 2nd generation vectors and associated plasmids will also work.

1.3) Prepare a waste container containing a 10% bleach solution within a BSL2 certified hood to inactivate any solutions or devices that contacted or contain lentivirus. Next, completely remove the media 4-6 hours after transfection into the bleach solution, replace with the same volume of new media, and allow the cells to grow.

1.4) After 4 days, collect media into 50 ml conical tubes and centrifuge at 1000 x g for 15 min to pellet any cell debris. Next, filter the supernatant through a 0.45 µm membrane. Any low protein binding filter, like PVDF, works well). Caution: place both solid and liquid viral waste into the bleach solution.

1.5) Load 30 ml filtered supernatant into ultracentrifuge tubes and into an ultracentrifuge. Centrifuge at 100,000 x g for 2.5 hours at 4 °C. Open the centrifuge tubes in a BSL2 hood and remove supernatant into 10% Bleach. Add ~100 µl of PBS to the pellet, which yields titers of 1x10⁷⁻⁸ infectious units/ml. Aliquot the following day and store at -80 °C. Lentivirus aliquots are stable at -80 °C for at least six months.

Important consideration: Many institutions now have viral cores. Acquire concentrated virus with a minimum titer of 1x10⁷ infectious units/ml, for optimal results.

2. Donor mice for MGE dissection

2.1) First, set up a timed mating between a Cre-expressing line of interest and either a wild type (WT) mouse or a mouse that will express a reporter after Cre-mediated recombination.

Note: Many Cre-driver lines are transgenics and are maintained and bred in the hemizygous state. Thus, only half of the embryos will contain the Cre transgene. DNA can be quickly prepared from the embryos for a short PCR to detect the Cre allele. The Cre⁺ embryos can then be harvested so that only the MGE tissue of the desired genotype is used. Alternatively, a Cre-dependent reporter may be used, to select the embryos for MGE dissection and transplantation.

2.2) Calculate which day will correspond to E13.5. If animals were paired the evening before, the day of the plug is 0.5. Order timed-pregnant mice or a WT female with P1 pups in order to time having postnatal (P)1 mice on the day the donor tissue will be E13.5. Alternatively, set up these matings in house one week prior to pairing the donor animals.

Note: The former strategy of generating both E13.5 and P1 embryos/pups for the same day is often difficult to do reliably.

3. Preparation of media, tools and equipment.

3.1) Prepare the reagents and tools for MGE cell preparation (Table 2).

3.1.1) Prepare a clean surface and place clean forceps, scissors and either a microsurgical knife or fine forceps (for precise tissue dissection) on the surface.

3.1.2) Prepare Hank's balanced salt solution (HBSS), for dissection, and Dulbecco's modified eagle's medium (DMEM) with 10% fetal bovine serum (FBS), for transduction.

3.1.3) Preincubate 20-30 ml DMEM/10% FBS in a 37 °C tissue culture incubator for about one hour. The lid should be loosened to allow for gas exchange and pH equilibration of the media.

Note: The media preincubation can be prepared just before starting the dissection.

4. MGE cell preparation

4.1) Sacrifice the pregnant mouse according to an approved animal protocol and remove the embryos into a 10 cm petri dish containing ice-cold HBSS.

4.2) Remove the brain from each embryo using a dissecting scope (do one at a time, leaving the rest of the embryos in ice-cold HBSS) and then proceed to cut out the MGE tissue.

Note: Detailed below, and in Figure 1, are key steps showing how to remove the MGE. In addition, Figure 2 is a movie showing the entire dissection procedure.

4.2.1) Position the brain with ventral side facing up (Figures 1A, A'). Note: it is also okay to have the dorsal aspect facing up. Cut the brain in half along the sagittal plane to generate two pieces. An example hemisected brain is shown (Figures 1B, B'), notice that dorsal (the overlying cortex) and ventral aspects of the brain cover and surround the ganglionic eminence (GE) tissue.

4.2.2) Next, with a dominant hand, hold either very fine forceps or a stabknife (Table 2), while immobilizing the hemisphere with forceps held by a non-dominant hand. (The hemisphere's medial aspect should be facing up). Unfold the dorsal and ventral tissue with forceps and a stab knife to reveal the underlying GE tissue (Figures 1C and diagrammed in 1C').

Note: Removing some media from the dissection petri dish can make it easier to stabilize the tissue while performing the MGE dissection.

4.2.3) Make straight cuts with the stabknife or fine forceps to separate the CGE, LGE and septal tissues (see example cuts denoted by red dashed lines, Figures 1D and D'). These cuts can be made in any order.

Note: Imagine the MGE as a "box" that is cut out of the surrounding tissue. Doing so helps reproducibly make similar cuts for each dissection, thus reducing variability in tissue dissections.

4.2.4) Finally, turn the MGE on its side and trim off the bottom (what was the lateral aspect of the brain). This removes the mantle zone of the MGE (discard in Figures E and E') from the rest of the MGE. The remaining aspect of MGE contains primarily ventricular zone and subventricular zone portions of the MGE, which contains nearly all the MGE progenitor cells. Proceed with this tissue.

Important consideration: The addition of silicone gel to the bottom of a petri dish can serve as an excellent dissection surface as it protects the delicate tips of forceps and provides a soft surface for pinning tissue with forceps.

4.3) Additional strategies for MGE dissection.

4.3.1) Cut the skin of the embryo using forceps like scissors to quickly remove the brain. As the embryo lays on its side, hold the tissue at the base of the head with the forceps used to anchor the tissue. First, cut anterior ventral to the brain and posterior ventral to the brain, and then connect the two cuts along the side of the embryo. Then grab the flap of skin and pull it over the top of the brain. The brain can then be quickly dissected away from the remaining tissue.

4.3.2) Alternatively, anchor the posterior aspect of the whole brain behind the cortex. Meanwhile, grasp each hemisphere at the most dorsal caudal aspect of the cortex and tear the cortex away from the anchored tissue in an anterior direction. In this way, both cortices can be removed and the bilateral ganglionic eminences are revealed, still attached to the rest of the tissue preserving the medial-lateral anatomy.

4.3.3) Switch to the stab-knife to make precise cuts around the MGE on each hemisphere. Use either a separate clean set of forceps to collect the MGE or a pipette with a large tip (i.e. P1000). *Note:* Keep the collected tissue away from all other dissected material, as some media is unavoidably transferred when the MGE is collected.

4.4) Collect the MGE and put the tissue into a 1.5 ml collection tube containing DMEM/10% FBS, (a volume of 500 μ l is sufficient to collect the MGEs). Repeat for the other hemisphere and place in the same collection tube. Keep samples on ice until all tissue is collected.

5. Lentiviral labeling and transplantation

5.1) Move the tubes of MGE tissue into a BSL2 certified hood and remove the media.

Note: The MGE tissue is big enough to be visible to the eye and will settle to the bottom of the tube allowing for the cold media to be easily and gently removed.

5.2) Add ~500 μ l of DMEM/10% FBS media, that was preincubated in a 37 °C tissue culture incubator. Next, add polybrene to facilitate transduction to each tube at a final concentration of 8 μ g/ml. Triturate the MGE tissue to create a single cell suspension, using a P1000 pipette tip. Finally, add ~15-20 μ l of concentrated lentivirus to each tube.

Important consideration: A trituration of 10-12 times is sufficient to break up MGE tissue from a single embryo, but more triturations may be required if multiple MGEs are pooled together. Try out different trituration conditions to determine what works best.

5.3) Securely close each tube, invert to mix, then place all the tubes in a 37 °C incubator. Incubate the cells in lentivirus for at least 30 minutes and up to an hour. Longer times have resulted in decreased cell viability. Invert the tubes every ten minutes until the time is up.

5.4) After incubation with lentivirus, remove the tubes from the incubator and centrifuge at ~700 x g for 3 minutes to pellet the cells. In the BSL2 hood, remove the supernatant and discard into 10% bleach. Next, add 1 ml DMEM/10% FBS and triturate the pellet 2-3 times to wash, then centrifuge again at the same speed to pellet the cells. Repeat this wash-step 2-3 more times to remove excess virus.

Note : Perform centrifugation steps at 4 °C, however, reduced viability has not been observed when short spins are performed at room temperature.

5.5) After the final wash, remove as much media as possible and put each tube on ice. Due to residual media on the sides of the tube, ~2-3 μ l of media will end up covering the cell pellet by the time the transplantation procedure has begun.

6. Transplantation and validation

6.1) Acquire host P1 pups and prepare the procedure area by spraying down with 0.025% Bleach. To maintain sterility during the procedure it is recommended to perform these procedures in a dedicated clean procedure room. In addition, use either autoclaved surgical tools sterilize surfaces that the pups will be in contact with using 0.025% Bleach. An example of representative equipment needed to perform the transplantations and a representative procedure area is shown in Figure 3.

6.1.1 Generate micropipettes to have a diameter at the tip between 40-80 μ m. Following these dimensions will yield optimal results. Heat sterilize the micropipettes when pulled and beveled on a surface and spray with 70% ethanol before storing the micropipettes in a sealed container.

Note: Alternatively, if access to the devices needed to create these needles (Table 2) is limiting, use any other injection device. However, these may not be as well suited as the micropipettes due to different diameters.

6.2) Draw up mineral oil into a 1 ml syringe, and with a 30^{1/2} gauge needle, fill the glass pipette completely with mineral oil. Next, mount the plunger onto the stereotaxic device, then attach the glass pipette to the stereotaxic device and load onto the plunger. Using the hydraulic drive, move

the plunger about halfway into the glass pipette, removing mineral oil that spills out with a clean a clean paper towel.

6.2.1) Alternatively to using a syringe, submerge the back end of the pipette in mineral oil and filled by capillary action. To prevent air bubbles in the pipette, maintain positive pressure on the syringe until completely out of the glass pipette.

Note: Other devices can be used to successfully transplant MGE cells ¹⁴. Any device that can deliver a volume less than or near 100 nl works well for this procedure.

6.3) Next, use a sterile papertowel, or any absorbant material, with the corner twisted into a fine point to delicately remove excess media above the MGE cell pellet. This step concentrates the cell density so that smaller injection volumes can be achieved. Next, use a low volume (P2 is preferred) pipette to slowly draw up the cell pellet and triturate 1-2 times before moving the cell suspension onto a hydrophobic surface. The volume should be just under 1 μ l. Move the tip of the needle into the cell suspension and using the hydraulic drive, draw up the cell suspension into the pipette.

6.4) Anaesthetize a P1 pup via hypothermia (wrap in a latex glove and put on ice for ~ 2-4 minutes). Check for effectiveness of anaesthesia with a noxious stimulus. Pinch the skin between the toes with fine forceps: the pup should be unresponsive if pinched. Next, place the pup onto a mold that is under the injection device, then make the skin taut by pulling back the skin on the head and securing with standard lab tape.

Note: While hypothermia is very effective on neonatal mice and results in low mortality rate, procedures must be done quickly, as pups will begin to recover in under 10 minutes. In addition, four minutes on ice is an upper limit of what can be tolerated. Try to only induce hypothermia once if a longer time is required for injections. Pups will recover within 5-10 minutes of hypothermia. This can be facilitated by placing the pups with litter and mom or by placing the pup on a warm surface to recover.

6.5) Using a stereotaxic device, position the tip of the glass pipette on the surface on the pup's head, perpendicular to the surface of the head. When the pipette is in contact with the head, consider this as "0". Next, push the pipette through the surface of the skin and skull into the cortex, then insert and retract the pipette ~ 2 times before stopping. For optimal targeting of cells into the neocortex, injections are performed when the micropipette is at a depth of 0.1 mm. However, this should be optimized by the user (see note below).

Note: While this depth reliably targets deeper neocortical layers with the devices described above, a few depths should be tested determined empirically. In addition, a range of depths at different rostro-caudal and medio-lateral position should be tested to determine what depth is optimal at each site. Also, the initial puncture should be rapid, as slow penetration into the neocortex diminishes the ability to cleanly penetrate the tissue. Try different speeds when first starting this procedure to find what works best. In addition, for testing coordinates, there is no real substitute for using labeled cells, as dyes have been unreliable to denote position.

6.6) Once the needle is in position, rotate the hydraulic device to advance the plunger into the glass pipette, pushing a set volume of cell suspension into the cortex. Inject 50-70 nls per site. Repeat this procedure at 3-6 different sites at different rostral-caudal levels if the goal is to obtain a wide distribution of cells throughout the neocortex.

Note: Volumes of 100 nl or greater can cause lesions and lead to large clumps of injected cells that fail to efficiently migrate out of the injection site. Thus, smaller injection volumes (~70 nl or less) are optimal, over more sites if time permits.

6.7) When injections are complete, remove the pup from the stage and mark it (toe clipping is a reliable way to identify the pups later). Once the pup has recovered and is able to move on its own (this occurs with minutes of removing them from the stage), put it back with the mom and litter.

Note: Since this is a minimally invasive procedure there are no post-surgical procedures once the pup is freely moving and warmed. However, pups should be checked not only after the procedure but also the following day to assure they have no signs of deteriorating health.

6.8) Before starting the procedure on the next pup, spray down the area with 0.025% Bleach to maintain a sterile working area. Allow the injected pups to develop and then assess the tissue at the appropriate developmental stage(s).

Representative results:

Since MGE cells have the unique ability to migrate and integrate when transplanted into a host neocortex¹⁶, they provide an excellent model system for genetic manipulation before *in vivo* studies. Herein, we show how one can isolate MGE tissue from E13.5 embryos (Figures 1 and 2), which can then be transduced with lentiviruses either *in vitro* or in a rapid manner before transplantation for *in vivo* studies. Labeling MGE via lentiviruses has been performed before using an enhancer driving GFP in GABAergic neurons¹⁵. However, the ability to express genes in specific subgroups from a heterogeneous population before transplantation may greatly aid studies of these cells' dispersal and integration. Herein, we sought to develop a means to target expression of a fluorescent protein to a specific interneuron subgroup, those that express somatostatin (SST)⁺.

We first subcloned a commercially available Cre-dependent GFP reporter (vector information, Table 2) into a lentiviral backbone. The vector was generated by first subcloning the cassette containing GFP flanked by loxP sites from the AAV vector and ligating it into a lentiviral vector backbone¹⁵ using XbaI and PflMI restriction sites, (this cassette contained only some of the CAG promoter). Next, the remainder of the CAG promoter was excised from a pCAGGs mammalian expression vector with SpeI and XbaI sites and ligated into the XbaI site of the lentiviral vector to generate pLenti-CAG-Flex-GFP. The 5' SpeI site of the insert is complimentary to XbaI and thus destroyed the 5' site, while the 3' XbaI site was conserved. The resulting vector (schema Figure 4A, vector sequence Table 1) was first tested *in vitro* in the presence or absence of Cre (schema of *in vitro* assay, Figure 4B). MGE primary neurons from *Ai14^{Flox/+}* E13.5 embryos were cultured and transduced with a combination of lentiviruses. Few to no GFP⁺ or tdTomato⁺ cells were observed with only the transduction of the CAG-Flex-GFP

lentivirus (Figures 4C, 4F and 4I). TdTomato fluorescence was present in the MGE cells transduced with a CMV-Cre lentivirus, indicative of Cre expression (Figures 4D, 4G and 4J). Finally, co-transduction of the MGE cells resulted in many tdTomato⁺ cells that also expressed GFP, indicating that the CAG-Flex-GFP lentivirus was working as expected (Figures 4E, 4H and 4K). Some rare GFP⁺ cells were observed that were not tdTomato⁺, potentially due to the transduced reporter incorporating next to a strong promoter, which accounted for < 2% of all the GFP⁺ cells.

MGE cells transplanted into a wild type host neocortex disperse, mature and integrate into the host neocortex¹⁶. E13.5 *SST-IRES-Cre⁺;Ai14^{Flox/+}* MGE cells were transplanted into WT neocortices at P1 (schema, Figure 5A) and their distribution examined at 7 and 35 days post transplant (DPT). At both ages, tdTomato⁺ cells could be seen throughout the neocortex (Figures 5B and 5C). The images in Figures 5B and 5C are representative transplants utilizing the MGE cells from a single embryo. To test how efficiently MGE cells could be labeled with the protocol described herein, MGE cells from *SST-IRES-Cre⁺; Ai14^{Flox/+}* embryos were transduced with the CAG-Flex-GFP lentivirus and transplanted in the same manner. For these experiments, ~15 ul of concentrated lentivirus (~1x10⁷ infectious units/ml) was utilized with the combined MGEs from one embryo for each transplant. The cells were then transplanted into a P1 WT host cortex and analyzed at 7 DPT (Figures 5D-5F). Of the transplanted cells (tdTomato⁺), approximately 20% were GFP⁺, indicating transduction with the CAG-Flex-GFP lentivirus (Figure 5G). These data suggest that with the amount and titer of lentivirus described above, ~20% of transplanted MGE cells can be labeled. The amount of virus can either be decreased or increased, or potentially other variables like duration of viral incubation can be altered, to achieve sparser or denser cell labeling.

Using MGE tissue from a Cre-dependent reporter mouse line in conjunction with the CAG-Flex-GFP lentivirus can limit the number of additional markers that can be probed for by immunofluorescence. Therefore, *SST-IRES-Cre⁺* E13.5 MGE tissue was collected and transduced with CAG-Flex-GFP lentivirus in order to visualize those transplanted MGE cells that expressed Cre (will be GFP⁺). These cells were transplanted into P1 WT cortex and assessed at 35 DPT (see experimental design, Figure 6A), a time point when mature interneuron markers are expressed. At 35 DPT, ~85% of GFP⁺ cells co-expressed SST, but only ~4% expressed PV (Figures 6B-6H). These numbers are consistent with the lineage analysis of the *SST-IRES-Cre* mouse line, which also fate maps to ~5-10% of PV⁺ cells⁹ (Vogt and Rubenstein, unpublished results). These data suggest that viral labeling of MGE is efficient and can be an applicable approach to introducing a reporter or potentially a gene of interest before *in vivo* analysis.

Tables and Figures:

Figure 1: Representative procedure for the dissection of E13.5 MGE tissue.

Example dissection of MGE tissue for either primary cultures or transplantations. (A-E) Images of E13.5 brain dissections, and (A'-E') schematics to highlight structures and important steps in the procedure. A, A') Representative E13.5 brain viewed from the ventral aspect. Red line denotes the first cut made, which will hemisect the brain into two pieces. (B, B') View of one brain hemisection. The medial aspect is visible, with lateral aspect down. Tissue from the dorsal cortex (blue color) overlies the ganglionic eminences. In addition, ventral tissue that will be removed is shown in orange. (C, C') View and illustration of the exposed ganglionic eminences

after overlying tissue has been peeled away. (D, D') Same view of exposed ganglionic eminences as in (C, C') but with detailed cut sites shown as red dashed lines. After MGE is cut out according to the lines denoted in (D, D'), the tissue is turned on its side (E, E') and the lateral aspect is trimmed off and discarded. Representative steps in the dissection and isolation of MGE tissue. Abbreviations: (CGE) caudal ganglionic eminence, (LGE) lateral ganglionic eminence, (MGE) medial ganglionic eminence.

Figure 2: Movie showing an E13.5 MGE dissection.

Movie depicts the removal of an E13.5 brain followed by subsequent unfolding and removal of the overlying tissue. The MGE is labeled and the cuts made to remove surrounding tissue are shown in a stepwise order.

Figure 3: Representative procedure area and example of injection needle for neonatal transplantations.

(A, A') Images showing an example setup to perform transplantations into neonatal mice. A microscope (1) is positioned above a stage containing a mold that can hold a neonatal mouse (5) and a stereotaxic device (2). (A') An enlarged image of (A) showing the region of the stereotaxic device that holds the glass injection needle (6) with an inserted plunger (7). The plunger is controlled by a fine hydraulic drive (4) and moves mineral oil within the glass needle that mediates inward and outward flow from the needle. (B) Example of a glass injection needle with a beveled tip. For the ruler in (B), each major demarcation = 100 μm . (C) Inventory list of items shown in (A, A').

Figure 4: *In vitro* tests demonstrate the expression of GFP from a CAG-Flex-GFP lentivirus in the presence of Cre.

(A) Schema of how the lentiviral CAG-Flex-GFP vector works in the presence of Cre. (B) Schema of primary MGE cell culture experiment to assess if the lentiviral CAG-Flex-GFP would express GFP in those cells with Cre expression. Briefly, MGE cells from a Cre-dependent reporter, *Ai14* (expresses tdTomato in the presence of Cre), were grown *in vitro* and transduced with Cre and/or Flex-GFP lentiviruses. (C-K) Immunofluorescent images of E13.5 MGE primary cultures that were transduced with a CMV-Cre, CAG-Flex-GFP or both. Cultures were imaged for native tdTomato expression, GFP and DAPI. Scale bar in (K) = 100 μm .

Figure 5: Representative images of transplanted and transduced, *SST-IRES-Cre⁺*; *Ai14^{Flox/+}* MGE cells

(A) Schema of experimental design to transplant either MGE cells alone or after lentiviral transduction into a wild type (WT) host, (DPT) days post transplant. Briefly, E13.5 *SST-IRES-Cre⁺*; *Ai14^{Flox/+}* MGE cells were either transplanted or transduced with the CAG-Flex-GFP lentivirus before transplantation into WT neocortices and assessed at 7 DPT. (B, C) Immunofluorescent images of neocortices at 7 or 35 DPT showing representative MGE transplanted cells (tdTomato⁺). (D-F) Immunofluorescent images of MGE cells transduced with the CAG-Flex-GFP lentivirus assessed at 7 DPT. (G) Quantification of the proportion of tdTomato⁺ cells that express GFP at 7 DPT. Scale bars in (C) and (F) = 100 μm .

Figure 6: Representative images of CAG-Flex-GFP lentivirus transduced, *SST-IRES-Cre⁺* MGE transplants that co-express MGE-derived interneuron subgroup markers.

(A) Schema of E13.5 *SST-IRES-Cre*⁺ MGE cell harvest and transduction with a CAG-Flex-GFP lentivirus and transplantation into the neocortex of P1 WT hosts before assessment at 35 DPT. Representative images from the neocortex of transplanted hosts showing expression of GFP, from the Flex vector (B, E), co-stained for either somatostatin (SST) (C) or parvalbumin (PV) (F). (D, G) Merged images co-stained with DAPI. (H) Quantification of the proportion of GFP cells that co-express SST or PV. Data represent \pm SEM, (n) = 3. Scale bar in (G) = 100 μ m.

Table 1: FASTA file of the pLentiviral-CAG-Flex-GFP DNA vector.

Table 2: Inventory list of reagents and tools.

An inventory of commercially available reagents including media, dissection tools, representative equipment for transplantation and DNA vectors. (n.a.) Not available or applicable.

Discussion:

The use of GABAergic cortical interneuron precursors from the embryonic ganglionic eminences (GEs) for cell based therapies is showing promise for many conditions¹²⁻²⁴. Precise molecular techniques are needed to track, and express genes of interest in specific interneuron subgroups. Here we provide a detailed protocol for labeling embryonic MGE cells with lentiviruses before transplantation and show how this technique can be used to express genes of interest in specific cortical interneuron subgroups for *in vivo* analysis.

The protocol described herein can be reliably used, however, for optimal reproducibility it is essential to adhere to a few critical steps. First, for viral transduction to be efficient, physiological temperature and pH are necessary. If these parameters are met, MGE cells can be transduced in ~30 minutes. Second, make sure to have a dense MGE pellet before proceeding to do a transplantation. This is important because only a limited volume can be injected into the neonatal mouse brain at each site without incurring damage, and the cells will migrate away from the injection site, so their density at the time of transplant is less of a concern than might be expected. Finally, run some test conditions with MGE cells that express a fluorescent reporter to determine what injection depths are optimal. While this protocol used MGE cells, CGE cells could also be used in the same manner. One drawback is that there are not many Cre-driver lines that restrict expression to the whole CGE or to particular subgroups of CGE-derived interneurons. However, the vasoactive intestinal peptide (VIP)⁹ is a reliable Cre-line that could be used to separate out this subgroup of CGE-derived cells. As new lines become available, it will be possible to employ this protocol with more genetic precision.

Previously, we and others have shown the utility of introducing genes into MGE cells before transplantation via electroporation or with lentivirus^{15, 17}. While these techniques were effective at introducing genes for *in vivo* analysis, MGE tissue is heterogeneous and gives rise to multiple interneuron subgroups as well as non-neuronal cells⁴. Moreover, it has been difficult to express a gene of interest only in a specific interneuron subgroup. Great strides have been made to generate transgenic lines that recapitulate the expression patterns of many cortical interneuron subgroups, including, but not limited to, *SST-IRES-Cre*, *PV-IRES-Cre*, *PV-2A-Cre* and *VIP-Cre*⁹⁻¹¹, and the advent of new lines will help elucidate additional possible populations in the future. Moreover, with the generation of Cre-dependent reporters and expression vectors, including Cre-

dependent reporter vectors used herein, a more precise expression of genes of interest can be achieved.

While injection of Cre-dependent reporter viruses into the brains of mice expressing Cre in restricted cells is a powerful method, viruses do not spread far from the site of injection. This may lead to a dense area of overlapping cells making it difficult to study the transduced cells in an individual fashion or away from the injection sites. In contrast, MGE cells have the unique ability to migrate away from the injection site, allowing for a cleaner assessment of the properties of individual cells. A drawback of injecting cells into the neocortex is that they will not traverse the normal tangential migration routes. One option to explore tangential migration using this assay is to prepare the cells in the same manner but inject them into an age-matched MGE of a WT host embryo instead of a neonatal pup. In this experiment, the transplanted cells would undergo the normal tangential routes. By combining MGE transplantation with the spatially-restricted, Cre-dependent expression of a reporter, we show the feasibility of expressing a gene of interest or reporter within a specific subgroup of cells that are themselves well suited for morphological studies.

One limitation to this technique may be the size of the fragment that one can reliably package into a lentiviral vector. In addition, this approach has not yet been tested with AAVs. However, once this technique is optimized by an individual, many variations of this approach may be used. First, the approach described here will allow researchers to express reporters using a Cre-dependent reporter lentivirus in conjunction with MGE donor cells of specific Cre-driver lines. This technique may be used to assess the morphology of individual MGE cells or potentially to express a gene of interest in different subgroups if a second gene is cloned into the vector. Second, it may also be feasible to use a Cre-expressing virus with Cre-dependent reporter MGE donor cells or potentially utilize evolving conserved DNA elements, promoters and enhancers, to drive expression in distinct populations of cells from a heterogeneous population.

A future hurdle to overcome will be labeling human-derived induced pluripotent stem cells or embryonic stem cells to potentially purify and/or study a specific group of cells. Interestingly, conserved DNA enhancers may also be used in viral expression systems to target GABAergic neurons in primary cultures, after injection into the cortex, and before transplantation of MGE cells^{15, 18, 19}. Enhancers may be an answer to this obstacle and will be of interest as molecular tools, as new techniques are required to study the utility of these cells in therapy. Indeed, inroads to discovering enhancers that could potentially label either GABAergic interneurons²⁰ or other neuronal subtypes, including glutamatergic neurons²¹, are under way. Using the viral labeling method herein, it may be possible to transduce differentiated human-derived stem cells with cell-type specific enhancers to label distinct cells of interest before transplantation and *in vivo* analysis.

Acknowledgements:

This work was supported by grants to JLRR from: Autism Speaks, Nina Ireland, Weston Havens Foundation, NIMH R01 MH081880, and NIMH R37 MH049428. PRW was supported by a fellowship from the National Science Council of Taiwan. SFS was supported by F32 (MH103003).

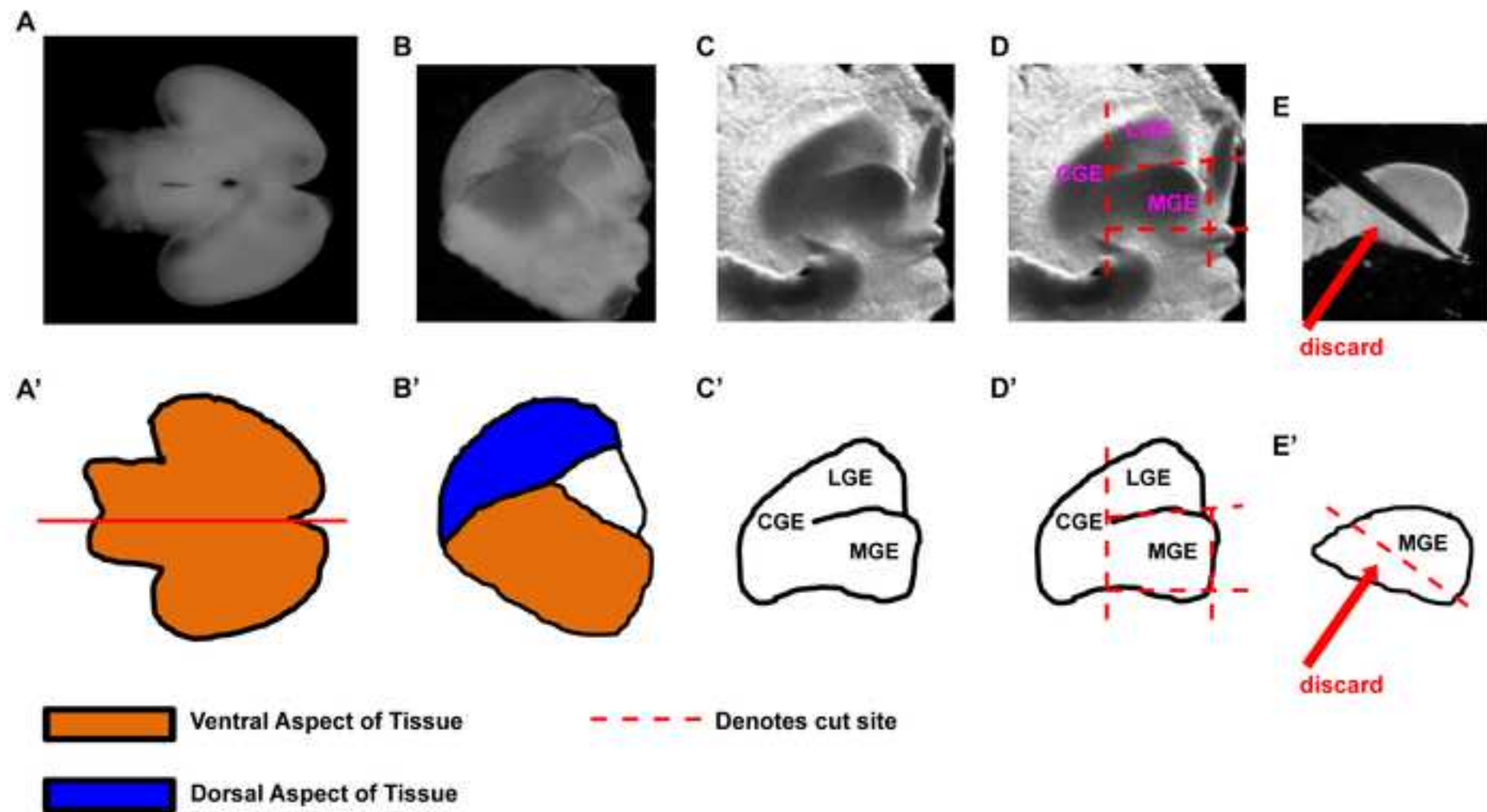
Disclosures:

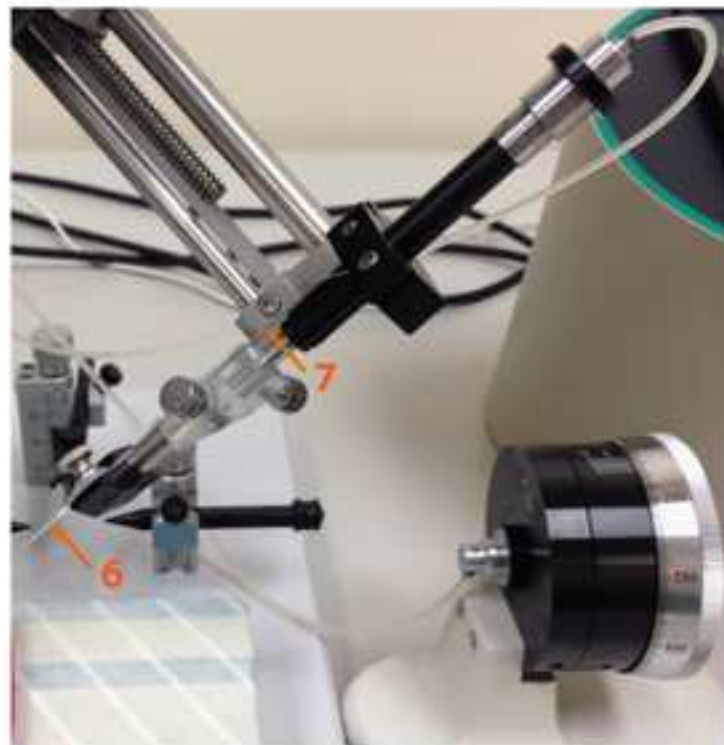
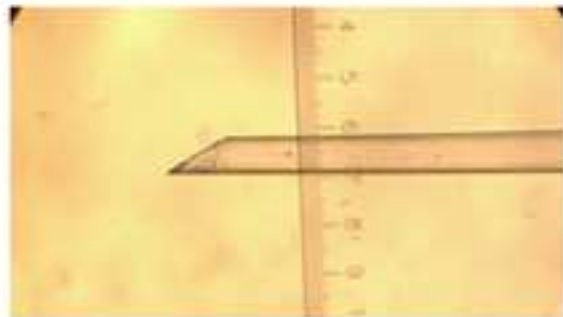
The authors declare that they have no competing financial interests.

References:

1. Huang, Z. J., Di Cristo, G. & Ango, F. Development of GABA innervation in the cerebral and cerebellar cortices. *Nat. Rev. Neurosci.* **8** (9), 673-686, doi:10.1038/nrn2188 (2007).
2. Rubenstein, J. L. R. & Merzenich, M. M. Model of autism: increased ratio of excitation/inhibition in key neural systems. *Genes, brain, and behavior.* **2** (5), 255-267, doi: 10.1034/j.1601-183X.2003.00037 (2003).
3. Anderson, S. A., Eisenstat, D. D., Shi, L. & Rubenstein, J. L. Interneuron migration from basal forebrain to neocortex: dependence on *Dlx* genes. *Science.* **278** (5337), 474-476, doi: 10.1126/science.278.5337.474 (1997).
4. Wonders, C. P. & Anderson, S. A. The origin and specification of cortical interneurons. *Nat. Rev. Neurosci.* **7**(9), 687-696, doi:10.1038/nrn1954 (2006).
5. Gelman, D. *et al.* A Wide Diversity of Cortical GABAergic Interneurons Derives from the Embryonic Preoptic Area. *J. Neurosci.* **31** (46), 16570-16580, doi: 10.1523/JNEUROSCI.4068-11.2011 (2011).
6. Miyoshi, G. *et al.* Genetic fate mapping reveals that the caudal ganglionic eminence produces a large and diverse population of superficial cortical interneurons. *J. Neurosci.* **30**(5), 1582-1594, doi: 10.1523/JNEUROSCI.4515-09.2010 (2010).
7. Batista-Brito, R. & Fishell, G. The developmental integration of cortical interneurons into a functional network. *Curr. Top. Dev. Biol.* **87**, 81-118, doi: 10.1016/S0070-2153(09)01203-4 (2009).
8. Inan, M., Welagen, J., & Anderson, S.A. Spatial and Temporal Bias in the Mitotic Origins of Somatostatin- and Parvalbumin-Expressing Interneuron Subgroups and the Chandelier Subtype in the Medial Ganglionic Eminence. *Cereb. Cortex.* **22** (4), 820-827, doi: 10.1093/cercor/bhr148 (2012).
9. Taniguchi, H. *et al.* A Resource of Cre Driver Lines for Genetic Targeting of GABAergic Neurons in Cerebral Cortex. *Neuron.* **71**(6), 995-1013, doi: 10.1016/j.neuron.2011.07.026 (2011).
10. Madisen, L. *et al.* A robust and high-throughput Cre reporting and characterization system for the whole mouse brain. *Nature Neuroscience.* **13** (1), 133-40, doi: 10.1038/nn.2467 (2010).
11. Hippenmeyer, S. *et al.* A developmental switch in the response of DRG neurons to ETS transcription factor signaling. *PLoS Biol.* **3** (5), e159, doi:10.1371/journal.pbio.0030159 (2005).
12. Southwell, D. G. *et al.* Interneurons from embryonic development to cell-based therapy. *Science.* **344** (6180), 1240622, doi: 10.1126/science.1240622 (2014).
13. Hunt, R. F., Girsakis, K. M., Rubenstein, J. L., Alvarez-Buylla, A. & Baraban, S. C. GABA progenitors grafted into the adult epileptic brain control seizures and abnormal behavior. *Nat. neurosci.* **16** (6), 692-7, doi: 10.1038/nn.3392 (2013).
14. Braz, J. M. *et al.* Forebrain GABAergic Neuron Precursors Integrate into Adult Spinal Cord and Reduce Injury-Induced Neuropathic Pain. *Neuron.* **74**, 663-75, doi:10.1016/j.neuron.2012.02.033 (2012).

15. Vogt, D. *et al.* Lhx6 Directly Regulates Arx and CXCR7 to Determine Cortical Interneuron Fate and Laminar Position. *Neuron*. **82** (2), 350-64, doi: 10.1016/j.neuron.2014.02.030 (2014).
16. Alvarez-Dolado, M. *et al.* Cortical inhibition modified by embryonic neural precursors grafted into the postnatal brain. *J. Neurosci.* **26** (4), 7380-9, doi: 10.1016/j.neuron.2012.02.033 (2006).
17. Du, T., Xu, Q., Ocbina, P. J. & Anderson, S. A. NKX2.1 specifies cortical interneuron fate by activating Lhx6. *Development*. **135** (8), 1559-67, doi: 10.1242/dev.015123 (2008).
18. Arguello, A. *et al.* Dapper Antagonist of Catenin-1 Cooperates with Dishevelled-1 during Postsynaptic Development in Mouse Forebrain GABAergic Interneurons. *PLoS ONE*. **8** (6), e67679, doi: 10.1371/journal.pone.0067679 (2013).
19. Lee, A. *et al.* Pyramidal neurons in prefrontal cortex receive subtype-specific forms of excitation and inhibition. *Neuron*. **81** (1), 61-68, doi: 10.1016/j.neuron.2013.10.031 (2014).
20. Chen, Y. J. J. *et al.* Use of “MGE Enhancers” for Labeling and Selection of Embryonic Stem Cell-Derived Medial Ganglionic Eminence (MGE) Progenitors and Neurons. *PLoS ONE*. **8** (5), e61956, doi: 10.1371/journal.pone.0061956 (2013).
21. Pattabiraman, K. *et al.* Transcriptional regulation of enhancers active in protodomains of the developing cerebral cortex. *Neuron*. **82** (5), 989-1003, doi: 10.1016/j.neuron.2014.04.014 (2014).

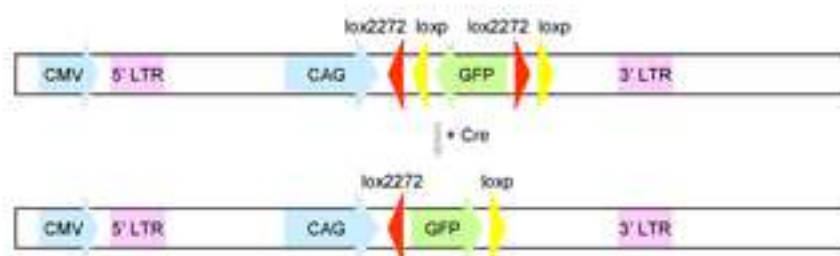


A**A'****B****C**

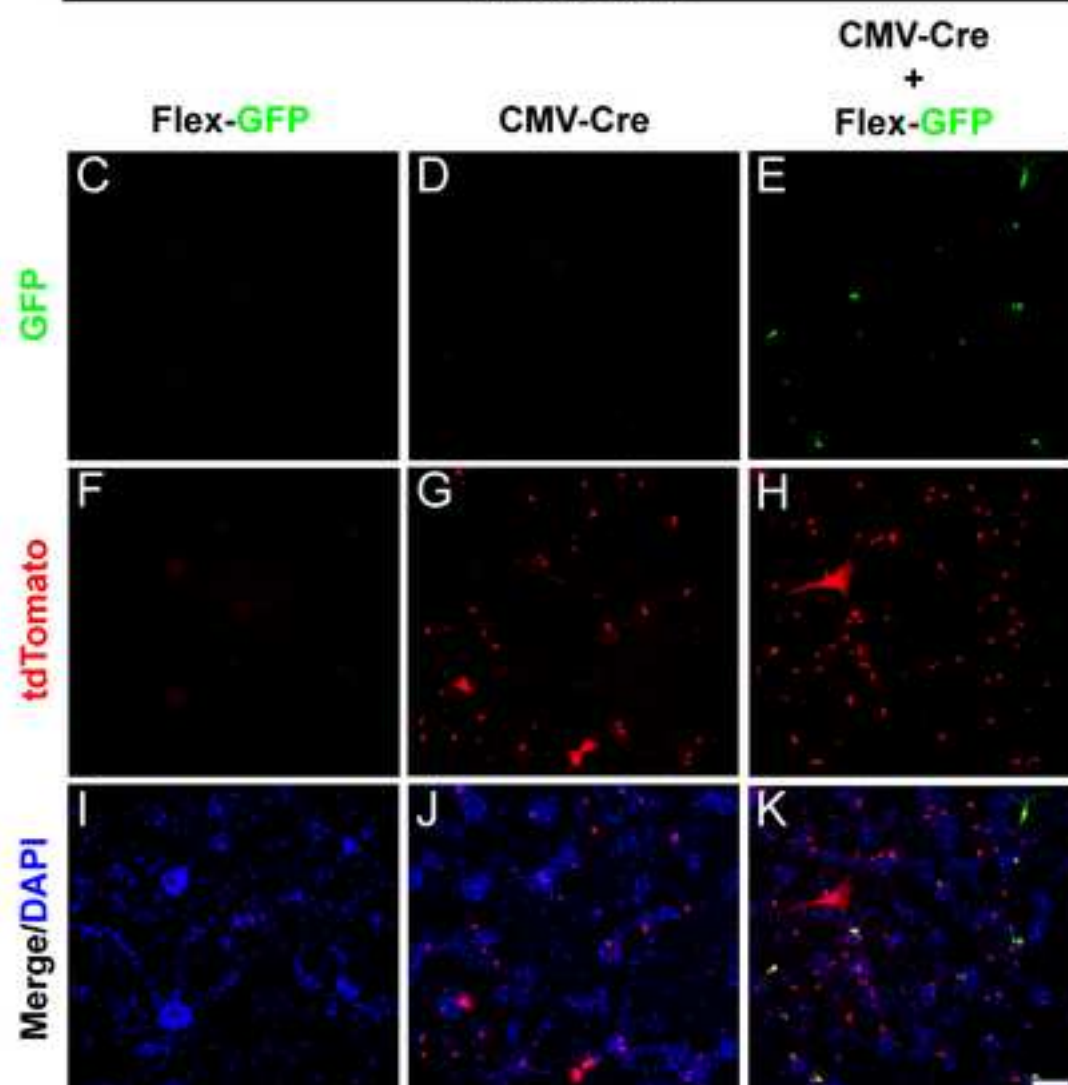
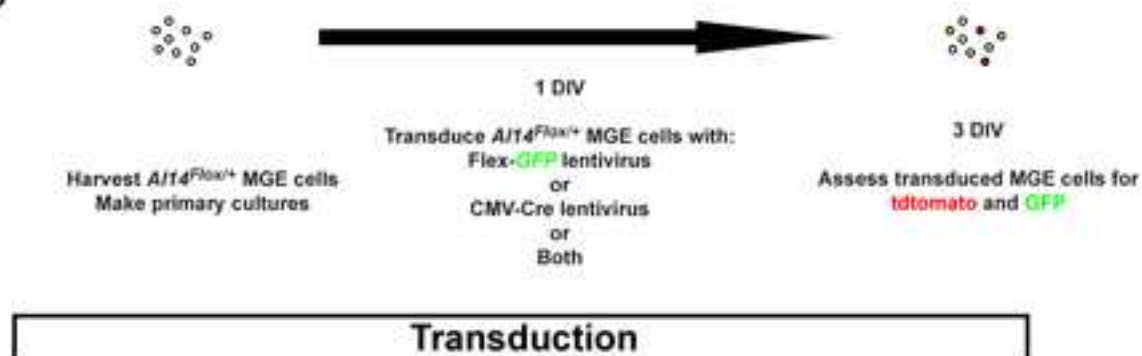
List of equipment and devices

- 1: Stereo microscope with boomstand
- 2: Stereotaxic Instrument
- 3: Stereotaxic X, Y and Z coordinate measurement device
- 4: Single-axis oil hydraulic fine micromanipulator
- 5: Malleable modeling clay to hold pup
- 6: Glass pipette mounted onto stereotax
- 7: Plunger mounted on hydraulic drive-controlled device
(note: plunger is inserted into pipette)

A



B



A

Collect E13.5 MGE cells from a *SST-Cre⁺; Al14^{Flox/+}* donor



Use **tdTomato⁺** MGE cells



or

Transduce MGE cells with Flex-**GFP** lentivirus

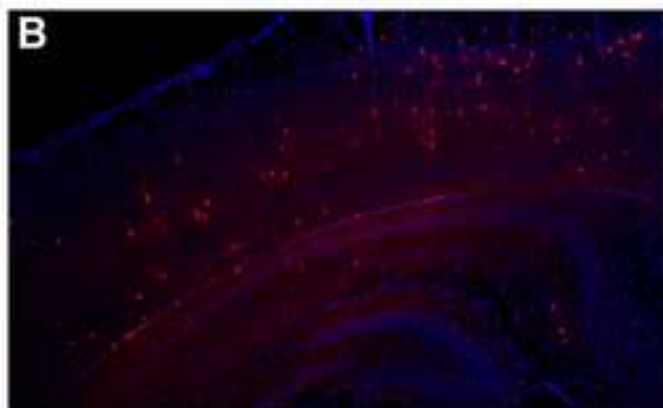


Inject cells into recipient P1 neocortex



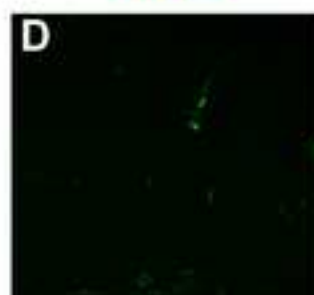
Assess at 7 and 35 DPT

tdTomato/DAPI

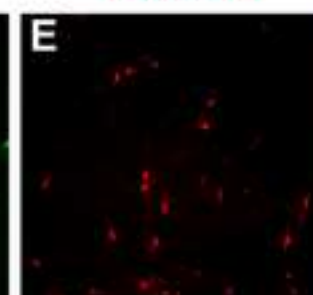


7 DPT

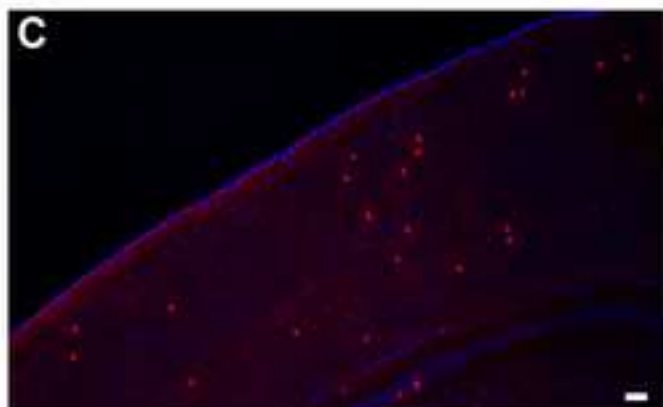
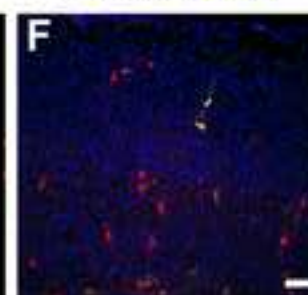
GFP



tdTomato



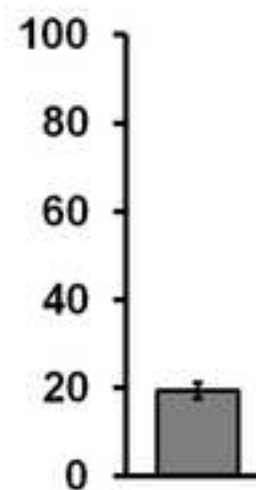
Merge + DAPI

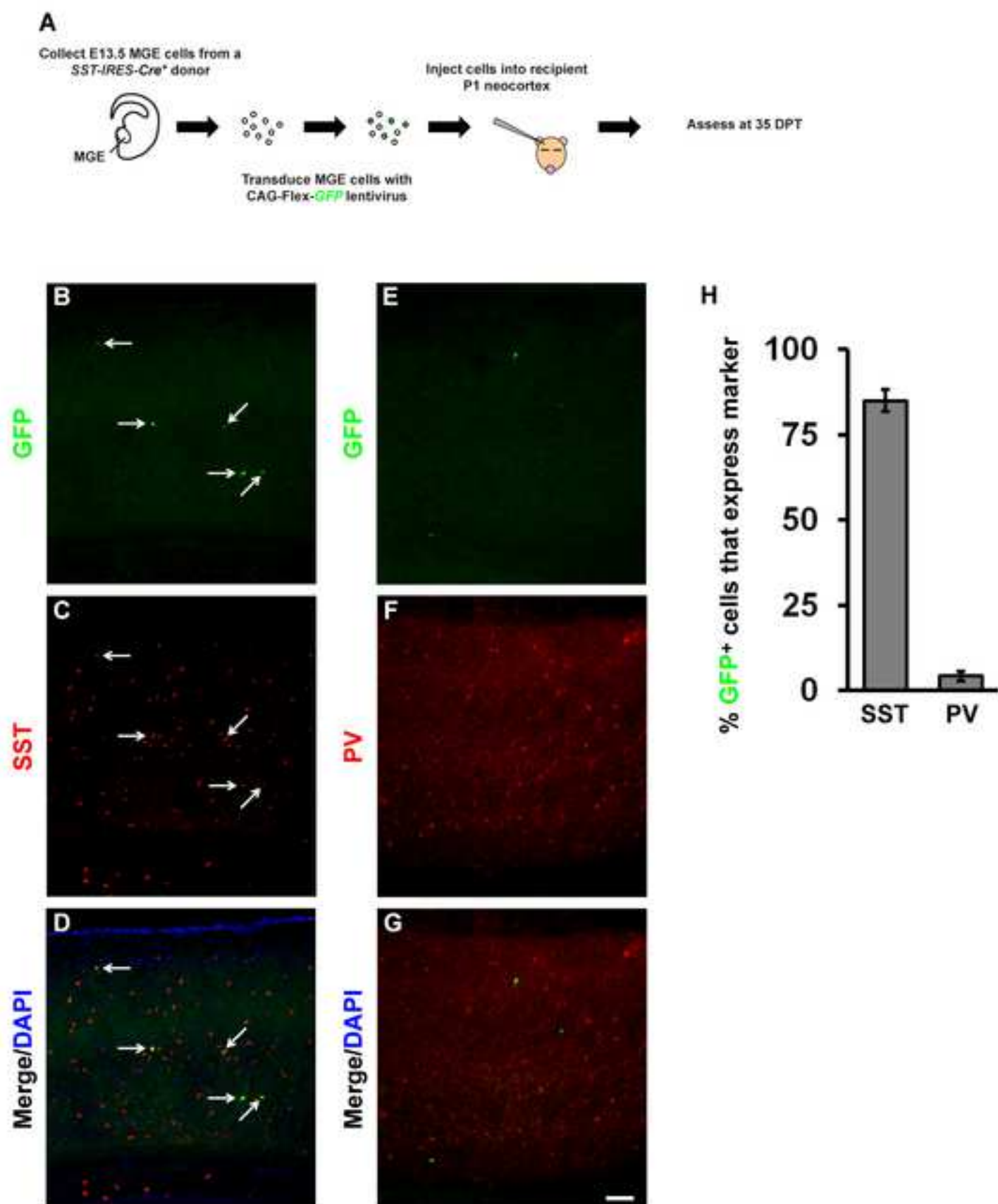


35 DPT

G

% **tdTomato⁺** cells that express **GFP**





>pLenti-CAG-Flex-GFP
GCTTAAGCGGTTCGACGGATCGGGAGATCTCCCGATCCCCTATGGTGCACCTCTCAGTACAATCTGCTCTGA
TGCCGCATAGTTAAGCCAGTATCTGCTCCCTGCTTGTGTGTTGGAGGTCGCTGAGTAGTGCGCGAGCAAA
ATTTAAGCTACAACAAGGCAAGGCTTGACCGACAATTGCATGAAGAATCTGCTTAGGGTTAGGCGTTTTG
CGCTGCTTCGCGATGTACGGGCCAGATATACGCGTTGACATTGATTATTGACTAGTTATTAATAGTAATC
AATTACGGGGTCATTAGTTCATAGCCCATATATGGAGTTCGCGGTTACATAACTTACGGTAAATGGCCCG
CCTGGCTGACCGCCCAACGACCCCCGCCATTGACGTCAATAATGACGTATGTTCCCATAGTAACGCCAA
TAGGGACTTTCCATTGACGTCAATGGGTGGAGTATTTACGGTAAACTGCCCCTTGGCAGTACATCAAGT
GTATCATATGCCAAGTACGCCCCCTATTGACGTCAATGACGGTAAATGGCCCGCCTGGCATTATGCCCAG
TACATGACCTTATGGGACTTTTCTACTTGGCAGTACATCTACGTATTAGTCATCGCTATTACCATTGGTGA
TGCGGTTTTTGGCAGTACATCAATGGGCGTGGATAGCGGTTTGACTCACGGGGATTTCGAAGTCTCCACCC
CATTGACGTCAATGGGAGTTTTGTTTTGGCACCAAAATCAACGGGACTTTCCAAAATGTCGTAACAACCTC
GCCCCATTGACGCAAAATGGGCGGTAGGCGTGTACGGTGGGAGGTCTATATAAGCAGCGCGTTTTGCCTGT
ACTGGGTCTCTCTGGTTAGACCAGATCTGAGCCTGGGAGCTCTCTGGCTAACTAGGGAACCCACTGCTTA
AGCCTCAATAAAGCTTGCCTTGAGTGCTTCAAGTAGTGTGTGCCCGTCTGTTGTGTGACTCTGGTAACTA
GAGATCCCTCAGACCCTTTTAGTCAGTGTGAAAATCTCTAGCAGTGGCGCCCGAACAGGGACTTGAAAG
CGAAAGGGAAACCAGAGGAGCTCTCTCGACGCAGGACTCGGCTTGCTGAAGCGCGCACGGCAAGAGGCGA
GGGGCGGCGACTGGTGAGTACGCCAAAAATTTTGACTAGCGGAGGCTAGAAGGAGAGAGATGGGTGCGAG
AGCGTCAGTATTAAGCGGGGGGAGAATTAGATCGCGATGGGAAAAAATTCGGTTAAGGCCAGGGGGAAAGA
AAAAATATAAATTAAAACATATAGTATGGGCAAGCAGGGAGCTAGAACGATTTCGCAGTTAATCCTGGCCT
GTTAGAAACATCAGAAGGCTGTAGACAAATACTGGGACAGCTACAACCATCCCTTCAGACAGGATCAGAA
GAACTTAGATCATTATATAATACAGTAGCAACCCTCTATTGTGTGCATCAAAGGATAGAGATAAAAGACA
CCAAGGAAGCTTTAGACAAGATAGAGGAAGAGCAAAACAAAAGTAAGACCACCGCACAGCAAGCGGCCGG
CCGCGCTGATCTTCAGACCTGGAGGAGGAGATATGAGGGACAATTGGAGAAGTGAATTATATAAATATAA
AGTAGTAAAAATTGAACCATTAGGAGTAGCACCCACCAAGGCAAAGAGAAGAGTGGTGCAGAGAGAAAAA
AGAGCAGTGGGAATAGGAGCTTTGTTCTTGGGTTCTTGGGAGCAGCAGGAAGCACTATGGGCGCAGCGT
CAATGACGCTGACGGTACAGGCCAGACAATTATTGTCTGGTATAGTGCAGCAGCAGAACAAATTTGCTGAG
GGCTATTGAGGCGCAACAGCATCTGTTGCAACTCACAGTCTGGGGCATCAAGCAGCTCCAGGCAAGAATC
CTGGCTGTGGAAGATACCTAAAGGATCAACAGCTCCTGGGGATTGGGGTTGCTCTGGAAAACCTCATT
GCACCATGCTGTGCCTTGAATGCTAGTTGGAGTAATAAATCTCTGGAACAGATTTGGAATCACAGCAC
CTGGATGGAGTGGGACAGAGAAAATTAACAATTACACAAGCTTAATACACTCCTTAATTGAAGAATCGCAA
AACCAGCAAGAAAAGAATGAACAAGAATTATTGGAATTAGATAAATGGGCAAGTTTGTGGAATTGGTTTA
ACATAACAAATTGGCTGTGGTATATAAAATTATTCATAATGATAGTAGGAGGCTTGGTAGGTTTAAGAAT
AGTTTTTTGCTGTACTTTCTATAGTGAATAGAGTTAGGCAGGGATATTCACCATTATCGTTTTAGACCCAC
CTCCCAACCCCGAGGGGACCCGACAGGCCCGAAGGAATAGAAGAAGAAGGTGGAGAGAGAGACAGAGACA
GATCCATTTCGATTAGTGAACGGATCGGCACTGCGTGCGCCAATTCTGCAGACAAATGGCAGTATTTCATCC
ACAATTTTAAAGAAAAGGGGGGATTGGGGGTACAGTGCAGGGGAAAGAATAGTAGACATAATAGCAAC
AGACATACAACTAAAGAATTACAAAAACAAATTACAAAAATTCAAATTTTCGGGTTTATTACAGGGAC
AGCAGAGATCCAGTTTGGTTAGTACCGGGCCCGCACTAGAACATTGATTATTGACTAGTTATTAATAGTA
ATCAATTACGGGGTCATTAGTTCATAGCCCATATATGGAGTTCGCGGTTACATAACTTACGGTAAATGGC
CCGCCTGGCTGACCGCCCAACGACCCCCGCCATTGACGTCAATAATGACGTATGTTCCCATAGTAACGC
CAATAGGGACTTTCCATTGACGTCAATGGGTGGAGTATTTACGGTAAACTGCCCCTTGGCAGTACATCA
AGTGTATCATATGCCAAGTACGCCCCCTATTGACGTCAATGACGGTAAATGGCCCGCCTGGCATTATGCC
CAGTACATGACCTTATGGGACTTTTCTACTTGGCAGTACATCTACGTATTAGTCATCGCTATTACCATTGG
TCGAGGTGAGCCCCACGTTCTGCTTCACTCTCCCCATCTCCCCCCCCCTCCCCACCCCAATTTTGTATTT
ATTTATTTTTTAATTATTTTGTGACGCGATGGGGCGGGGGGGGGGGGGGGGGGGGGGGGGGGGGGGGGGG
GGGCGGGGCGAGGGGCGGGGCGGGGCGAGGCGGAAAGGTGCGGCGGCAGCCAATCAGAGCGGCGCGCTCC
GAAAGTTTTCTTTTATGGCGAGGCGGCGGCGGCGGCGGCTATAAAAAGCGAAGCGCGGCGGGCGGG
AGTCGTTGCGCGCTGCCTTCCCCCGTGCCCCGCTCCGCCGCGCCTCGCGCCGCGCGCGCGGCTCTGA
CTGACCGCGTTACTCCACAGGTGAGCGGGCGGGACGGCCCTTCTCCTCCGGGCTGTAATTAGCGCTTGG
TTTAATGACGGCTTGTCTTCTTCTGTGGCTGCGTGAAAGCCTTGAGGGGCTCCGGGAGGGCCCTTTGTG
CGGGGGGAGCGGCTCGGGGGGTGCGTGCGTGTGTGTGCGTGCGTGAGCGCGCGCGTGCAGGCTCGCGCTG
CCCGGCGGCTGTGAGCGCTGCGGGCGCGGCGCGGGGCTTTGTGCGCTCCGCAGTGTGCGCGAGGGGAGCG
CGGCCGGGGCGGTGCCCCGCGGTGCGGGGGGGGCTGCGAGGGGAACAAAGGCTGCGTGCGGGGTGTGTG
CGTGGGGGGGTGAGCAGGGGGGTGTGGGCGCGTCCGTGCGGCTGCAACCCCCCTGCACCCCCCTCCCCGA
GTTGCTGAGCACGGCCCGCTTCGGGTGCGGGGCTCCGTACGGGGCGTGGCGCGGGGCTCGCCGTGCCGG
GCGGGGGGTGGCGGCAGGTGGGGGTGCCGGGCGGGGCGGGGCCCGCTCGGGCCGGGGAGGGCTCGGGGGA

AGGGGCGCGGCGGCCCCCGGAGCGCCGGCGGCTGTCTGAGGCGCGGCGAGCCGCAGCCATTGCCTTTTATG
GTAATCGTGCGAGAGGGGCGCAGGGACTTCCTTTTGTCCCAAATCTGTGCGGAGCCGAAATCTGGGAGGCGC
CGCCGCACCCCTCTAGCGGGCGCGGGGCGAAGCGGTGCGGCGCCGGCAGGAAGGAAATGGGCGGGGAGG
GCCTTCGTGCGTCGCCGCGCCGCCGTCCCCTTCTCCCTCTCCAGCCTCGGGGCTGTCCGCGGGGGGACGG
CTGCCTTCGGGGGGGACGGGGCAGGGCGGGGTTTCGGCTTCTGGCGTGTGACCGGCGGCTCTAGAGCCTCT
GCTAACCATGTTTCATGCCTTCTTCTTTTTTCTACAGCTCCTGGGCAACGTGCTGGTTATTGTGCTGTCTC
ATCATTTCGGCAAAGAATCTAGATTGGATCCCCATAACTTCGTATAAAGTATCCTATACGAAGTTATATC
AAAATAGGAAGACCAATGCTTCACCATCGACCCGAATTGCCAAGCATCACCATCGACCCATAACTTCGTA
TAATGTATGCTATACGAAGTTATACTAGGGATCCCCCTCGAGTTTTACTTGTACAGCTCGTCCATGCCG
AGAGTGATCCCGGCGGCGGTACGAACCTCCAGCAGGACCATGTGATCGCGCTTCTCGTTGGGGTCTTTGC
TCAGGCGGAGTGGGTGCTCAGGTAGTGGTTGTCTGGGCGAGCAGCACGGGGCCGTCCCGATGGGGGTGTT
CTGCTGGTAGTGGTCGGCGAGCTGCACGCTGCCGTCTCGATGTTGTGGCGGATCTTGAAGTTACCTTTG
ATGCCGTTCTTCTGCTTGTCTGGCCATGATATAGACGTTGTGGCTGTTGTAGTTGTACTCCAGCTTGTGCC
CCAGGATGTTGCCGTCTCTCTTGAAGTCGATGCCCTTCAGCTCGATGCGGTTACCAGGGTGTGCCCCC
GAACTTCACCTCGGCGCGGGTCTTGTAGTTGCCGTGCTCCTTGAAGAAGATGGTGCGCTCCTGGACGTAG
CCTTCGGGCATGGCGGACTTGAAGAAGTCGTGCTGCTTCATGTGGTTCGGGGTAGCGGCTGAAGCACTGCA
CGCCGTAGGTGAGGTGGTCACGAGGGTGGGCCAGGGCACGGGCAGCTTGCCGGTGGTGCAGATGAACTT
CAGGGTCAGCTTGCCGTAGGTGGCATCGCCCTCGCCCTCGCCGGACACGCTGAACTTGTGGCCGTTTACG
TCGCCGTCCAGCTCGACCAGGATGGGCACCACCCCGGTGAACAGCTCCTCGCCCTTGCTCACCATGGTGG
CGGTACCGAATTCTAGTATAACTTCGTATAGGATACTTTATACGAAGTTATCATTGGGATTCTTCTCTATT
TTGATCCAAGCATCACCATCGACCCCTCTAGTCCAGATCTCACCATCGACCCATAACTTCGTATAGCATA
ATTATACGAAGTTATGTCCCTCGAAGAGGTTTGAATTCGATATCAAGCTTATCGATAATCAACCTCTGGA
TTACAAAATTTGTGAAAGATTGACTGGTATTCTTAACTATGTTGCTCCTTTTACGCTATGTGGATACGCT
GCTTTAATGCCTTTGTATCATGCTATTGCTTCCCGTATGGCTTTTCATTTTCTCCTCCTTGTATAAATCCT
GGTTGCTGTCTCTTTATGAGGAGTTGTGGCCCGTTGTGTCAGGCAACGTGGCGTGGTGTGCACTGTGTTTGC
TGACGCAACCCCCACTGGTTGGGGCATTGCCACCACCTGTGAGCTCCTTTCCGGGACTTTTCGCTTTCCCC
CTCCCTATTGCCACGGCGGAATCATCGCCGCCTGCCTTGCCCGCTGCTGGACAGGGGCTCGGCTGTTGG
GCACTGACAATTCCGTGGTGTGTGTCGGGGAAATCATCGTCCTTTCTTGGCTGCTCGCCTGTGTTGCCAC
CTGGATTCTGCGGGGACGTCCTTCTGCTACGTCCTTTCGGCCCTCAATCCAGCGGACCTTCTTCCCGC
GGCCTGCTGCCGGCTCTGCGGCCCTTTCGCGCTTTCGCTTTCGCCCTCAGACGAGTCGGATCTCCCTTT
GGGCGCCTCCCCGCATCGATACCGTCGACCTCGATCGAGACCTAGAAAAACATGGAGCAATCACAAGTA
GCAATACAGCAGCTACCAATGCTGATTGTGCTGGCTAGAAGCACAAGAGGAGGAGGAGGTGGGTTTTCC
AGTCACACCTCAGGTACCTTTAAGACCAATGACTTACAAGGCAGCTGTAGATCTTAGCCACTTTTTTAAAA
GAAAAGGGGGGACTGGAAGGGCTAATTCACCTCCCAACGAAGACAAGATATCCTTGATCTGTGGATCTACC
ACACACAAGGCTACTTCCCTGATTGGCAGAACTACACACCAGGGCCAGGGATCAGATATCCACTGACCTT
TGGATGGTGTCTACAAGCTAGTACCAGTTGAGCAAGAGAAGGTAGAAGAAGCCAATGAAGGAGAGAACACC
CGCTTGTTACACCCTGTGAGCCTGCATGGGATGGATGACCCGGAGAGAGAAGTATTAGAGTGGAGGTTTG
ACAGCCGCCTAGCATTTTCATCATATGGCCCCGAGAGCTGCATCCGGACTGTACTGGGTCTCTCTGGTTAGA
CCAGATCTGAGCCTGGGAGCTCTCTGGCTAACTAGGGAACCCACTGCTTAAGCCTCAATAAAGCTTGCCT
TGAGTGCTTCAAGTAGTGTGTGCCCGTCTGTTGTGTGACTCTGGTAACTAGAGATCCCTCAGACCCTTTT
AGTCAGTGTGGAATCTCTAGCAGCATGTGAGCAAAAGGCCAGCAAAAGGCCAGGAACCGTAAAAAGGC
CGCGTTGCTGGCGTTTTTCCATAGGCTCCGCCCCCTGACGAGCATCACAAAAATCGACGCTCAAGTCAG
AGGTGGCGAAACCCGACAGGACTATAAAGATACCAGGCGTTTTCCCCCTGGAAGCTCCCTCGTGCGCTCTC
CTGTTCCGACCCTGCCGCTTACCGGATACCTGTCCGCCTTTCTCCCTTCGGGAAGCGTGGCGCTTTCTCA
TAGCTCACGCTGTAGGTATCTCAGTTCGGTGTAGGTGCTTCGCTCCAAGCTGGGCTGTGTGCACGAACCC
CCCGTTTCAGCCCGACCGCTGCGCCTTATCCGGTAACTATCGTCTTGAGTCCAACCCGGTAAGACACGACT
TATCGCCACTGGCAGCAGCCACTGGTAACAGGATTAGCAGAGCGAGGTATGTAGGCGGTGCTACAGAGTT
CTTGAAGTGGTGGCCTAACTACGGCTACACTAGAAGAACAGTATTTGGTATCTGCGCTCTGCTGAAGCCA
GTTACCTTCGAAAAAGAGTTGGTAGCTCTTGATCCGGCAAACAAACCACCGCTGGTAGCGGTGGTTTTT
TTGTTTGCAAGCAGCAGATTACGCGCAGAAAAAAGGATCTCAAGAAGATCCTTTGATCTTTTCTACGGG
GTCTGACGCTCAGTGGAACGAAAACCTACGTTAAGGGATTTTGGTCATGAGATTATCAAAAAGGATCTTC
ACCTAGATCCTTTTAAATTAATAATGAAGTTTTTAAATCAATCTAAAGTATATATGAGTAAACTTGGTCTG
ACAGTTACCAATGCTTAATCAGTGAGGCACCTATCTCAGCGATCTGTCTATTTTCGTTTCATCCATAGTTGC
CTGACTCCCCGTCTGTAGATAACTACGATACGGGAGGGCTTACCATCTGGCCCCAGTGCTGCAATGATA
CCGCGAGACCCACGCTCACCGGCTCCAGATTTATCAGCAATAAACCAGCCAGCCGGAAGGGCCGAGCGCA
GAAGTGGTCTGCAACTTTATCCGCCTCCATCCAGTCTATTAATTGTTGCCGGAAGCTAGAGTAAGTAG
TTCGCCAGTTAATAGTTTGCGCAACGTTGTTGCCATTGCTACAGGCATCGTGGTGTACGCTCGTCTGTTT

GGTATGGCTTCATTTCAGCTCCGGTTCCTCAACGATCAAGGCGAGTTACATGATCCCCCATGTTGTGCAAAA
AAGCGGTTAGCTCCTTCGGTCCTCCGATCGTTGTCAGAAGTAAGTTGGCCGCAGTGTTATCACTCATGGT
TATGGCAGCACTGCATAATTCTCTTACTGTGTCATGCCATCCGTAAGATGCTTTTCTGTGACTGGTGAGTAC
TCAACCAAGTCATTCTGAGAATAGTGTATGCGGCGACCGAGTTGCTCTTGCCCGGCGTCAATACGGGATA
ATACCGCGCCACATAGCAGAACTTTAAAAGTGCTCATCATTGGAAAACGTTCTTCGGGGCGAAAACCTCTC
AAGGATCTTACCGCTGTTGAGATCCAGTTCGATGTAACCCACTCGTGCACCCAACTGATCTTCAGCATCT
TTTACTTTTACCAGCGTTTCTGGGTGAGCAAAAACAGGAAGGCAAAATGCCGCAAAAAAGGGAATAAGGG
CGACACGGAAATGTTGAATACTCATACTCTTCCTTTTTCAATATTATTGAAGCATTATCAGGGTTATTG
TCTCATGAGCGGATACATATTTGAATGTATTTAGAAAAATAAACAAATAGGGGTTCGCGCACATTTCCC
CGAAAAGTGCCACCTGAC

Reagents and equipment for MGE cell preparation and transduction		Catalog #	Company
1)	Dulbecco's Modified Eagle Medium, with high glucose	12491-015	Life Technologies
2)	Heat inactivated Fetal Bovine Serum	10437-077	Life Technologies
3)	Hanks balanced salt solution (HBSS), no calcium or magnesium	14170-112	Life Technologies
4)	1.5 ml microcentrifuge tubes (or other collection tubes with lids)	3810X	Eppendorf International
5)	Polybrene	sc-134220	SantaCruz Biotechnology
6)	Stab knife straight 22.5 ° (optional)	REF 72-2201	Surgical specialties corporation
7)	Petri dish (10 cm), for tissue dissections	FB0875713	Fisher Scientific
8)	2 fine tip forceps, like Dumont #5	11254-20	Fine Scientific Tools
9)	37° C tissue culture incubator with 5% CO ₂ input	C150	Binder
10)	Tabletop centrifuge that can spin 1.5 ml microcentrifuge tubes		
11)	Any P1000 pipette that can be used for cell trituration		
12)	Biosafety level 2 hood		

Reagents and equipment for <i>in vitro</i> MGE primary cultures		Catalog #	Company
1)	Lab-TekII chamberslides with cover, 8 well	154941	Thermo Fisher
2)	Poly-L-lysine 0.1% weight/volume	P8920	Sigma Aldrich
3)	Mouse Laminin, 0.5-2 mg/ml	23017-015	Life Technologies
4)	Neurobasal medium	21103-049	Life Technologies
5)	B27 serum free supplement	17504044	Life Technologies
6)	Glutamax, 100x stock	35050-061	Life Technologies
7)	Penicillin-Streptomycin, 100x stock	15070-063	Life Technologies
8)	Glucose, (prepare a 25% solution in water)	G5400	Sigma Aldrich

Reagents and equipment for MGE cell transplantation		Catalog #	Company
1)	1 ml syringe	REF 309602	BD, Becton Dickinson and company
2)	30 ^{1/2} gauge needle	305106	BD, Becton Dickinson and company
3)	Precision bore to deliver 5 µl (comes with plunger)	5-000-1005	Drummond scientific company
4)	Parafilm	PM-999	Polysciences, Inc.

5) **	Stereo microscope with boomstand	MZ6	Leica
6) **	Digital just for mice stereotaxic instrument	51725D	Stoelting company
7) **	Single-axis oil hydraulic fine micromanipulator	MO-10	Narishige
8)	Diamond coated rotary beveler	n.a.	made in house
9)	Needle pipette puller	730	Kopf instruments
10)	Mineral oil	n.a.	Any drug store or pharmacy
11)	Any pipette and tips that can reliably measure 1 µl of volume		

** These are the particular models we use, but many other setups should work

Optional Reagents (for making Lentiviruses)		Catalog #	Company
1)	25 mm, 0.45 µm filter	09-719B	Fisher Scientific
2)	Ultra-clear centrifuge tubes (25 x 89 mm)	344058	Beckman Coulter®
3)	Lipofectamine ²⁰⁰⁰ (1.5 ml size)	11668019	Invitrogen

Other commercially available supplies		Catalog #	Company
1)	pMDLg/pRRE plasmid encoding gag/pol	12251	Addgene
2)	pRSV-Rev plasmid encoding Rev	12253	Addgene
3)	pMD2.G plasmid encoding VSVG	12259	Addgene
4)	pAAV-Flex-GFP	28304	Addgene

[Click here to download Animated Figure \(video and/or .ai figure files\): Figure 2. MGEdissect movie.mov](#)



1 Alewife Center #200
Cambridge, MA 02140
tel. 617.945.9051
www.jove.com

ARTICLE AND VIDEO LICENSE AGREEMENT

Title of Article:

Viral-mediated labeling and transplantation of medial ganglionic eminence (MGE) cells for in vivo studies

Author(s):

Daniel Vogt, Pei-Rang Wu, Shawn F. Sorrells, Christine Arnold, Arturo Alvarez-Buylla, John L. R. Rubenstein

Item 1 (check one box): The Author elects to have the Materials be made available (as described at <http://www.jove.com/publish>) via: ☒ Standard Access ☐ Open Access

Item 2 (check one box):

- ☐ The Author is NOT a United States government employee.
- ☐ The Author is a United States government employee and the Materials were prepared in the course of his or her duties as a United States government employee.
- ☒ The Author is a United States government employee but the Materials were NOT prepared in the course of his or her duties as a United States government employee.

ARTICLE AND VIDEO LICENSE AGREEMENT

1. **Defined Terms.** As used in this Article and Video License Agreement, the following terms shall have the following meanings: "**Agreement**" means this Article and Video License Agreement; "**Article**" means the article specified on the last page of this Agreement, including any associated materials such as texts, figures, tables, artwork, abstracts, or summaries contained therein; "**Author**" means the author who is a signatory to this Agreement; "**Collective Work**" means a work, such as a periodical issue, anthology or encyclopedia, in which the Materials in their entirety in unmodified form, along with a number of other contributions, constituting separate and independent works in themselves, are assembled into a collective whole; "**CRC License**" means the Creative Commons Attribution-Non Commercial-No Derivs 3.0 Unported Agreement, the terms and conditions of which can be found at: <http://creativecommons.org/licenses/by-nc-nd/3.0/legalcode>; "**Derivative Work**" means a work based upon the Materials or upon the Materials and other pre-existing works, such as a translation, musical arrangement, dramatization, fictionalization, motion picture version, sound recording, art reproduction, abridgment, condensation, or any other form in which the Materials may be recast, transformed, or adapted; "**Institution**" means the institution, listed on the last page of this Agreement, by which the Author was employed at the time of the creation of the Materials; "**JoVE**" means MyJoVE Corporation, a Massachusetts corporation and the publisher of *The Journal of Visualized Experiments*; "**Materials**" means the Article and / or the Video; "**Parties**" means the Author and JoVE; "**Video**" means any video(s) made by the Author, alone or in conjunction with any other parties, or by JoVE or its affiliates or agents, individually or in collaboration with the Author or any other parties, incorporating all or any portion of the Article, and in which the Author may or may not appear.

2. **Background.** The Author, who is the author of the Article, in order to ensure the dissemination and protection of the Article, desires to have the JoVE publish the Article and create and transmit videos based on the Article. In furtherance of such goals, the Parties desire to memorialize in this Agreement the respective rights of each Party in and to the Article and the Video.

3. **Grant of Rights in Article.** In consideration of JoVE agreeing to publish the Article, the Author hereby grants to JoVE, subject to **Sections 4 and 7** below, the exclusive, royalty-free, perpetual (for the full term of copyright in the Article, including any extensions thereto) license (a) to publish, reproduce, distribute, display and store the Article in all forms, formats and media whether now known or hereafter developed (including without limitation in print, digital and electronic form) throughout the world, (b) to translate the Article into other languages, create adaptations, summaries or extracts of the Article or other Derivative Works (including, without limitation, the Video) or Collective Works based on all or any portion of the Article and exercise all of the rights set forth in (a) above in such translations, adaptations, summaries, extracts, Derivative Works or Collective Works and (c) to license others to do any or all of the above. The foregoing rights may be exercised in all media and formats, whether now known or hereafter devised, and include the right to make such modifications as are technically necessary to exercise the rights in other media and formats. If the "Open Access" box has been checked in **Item 1** above, JoVE and the Author hereby grant to the public all such rights in the Article as provided in, but subject to all limitations and requirements set forth in, the CRC License.

ARTICLE AND VIDEO LICENSE AGREEMENT

4. Retention of Rights in Article. Notwithstanding the exclusive license granted to JoVE in **Section 3** above, the Author shall, with respect to the Article, retain the non-exclusive right to use all or part of the Article for the non-commercial purpose of giving lectures, presentations or teaching classes, and to post a copy of the Article on the Institution's website or the Author's personal website, in each case provided that a link to the Article on the JoVE website is provided and notice of JoVE's copyright in the Article is included. All non-copyright intellectual property rights in and to the Article, such as patent rights, shall remain with the Author.

5. Grant of Rights in Video – Standard Access. This **Section 5** applies if the "Standard Access" box has been checked in **Item 1** above or if no box has been checked in **Item 1** above. In consideration of JoVE agreeing to produce, display or otherwise assist with the Video, the Author hereby acknowledges and agrees that, Subject to **Section 7** below, JoVE is and shall be the sole and exclusive owner of all rights of any nature, including, without limitation, all copyrights, in and to the Video. To the extent that, by law, the Author is deemed, now or at any time in the future, to have any rights of any nature in or to the Video, the Author hereby disclaims all such rights and transfers all such rights to JoVE.

6. Grant of Rights in Video – Open Access. This **Section 6** applies only if the "Open Access" box has been checked in **Item 1** above. In consideration of JoVE agreeing to produce, display or otherwise assist with the Video, the Author hereby grants to JoVE, subject to **Section 7** below, the exclusive, royalty-free, perpetual (for the full term of copyright in the Article, including any extensions thereto) license (a) to publish, reproduce, distribute, display and store the Video in all forms, formats and media whether now known or hereafter developed (including without limitation in print, digital and electronic form) throughout the world, (b) to translate the Video into other languages, create adaptations, summaries or extracts of the Video or other Derivative Works or Collective Works based on all or any portion of the Video and exercise all of the rights set forth in (a) above in such translations, adaptations, summaries, extracts, Derivative Works or Collective Works and (c) to license others to do any or all of the above. The foregoing rights may be exercised in all media and formats, whether now known or hereafter devised, and include the right to make such modifications as are technically necessary to exercise the rights in other media and formats. For any Video to which this Section 6 is applicable, JoVE and the Author hereby grant to the public all such rights in the Video as provided in, but subject to all limitations and requirements set forth in, the CRC License.

7. Government Employees. If the Author is a United States government employee and the Article was prepared in the course of his or her duties as a United States government employee, as indicated in **Item 2** above, and any of the licenses or grants granted by the Author hereunder exceed the scope of the 17 U.S.C. 403, then the rights granted hereunder shall be limited to the maximum rights permitted under such

statute. In such case, all provisions contained herein that are not in conflict with such statute shall remain in full force and effect, and all provisions contained herein that do so conflict shall be deemed to be amended so as to provide to JoVE the maximum rights permissible within such statute.

8. Likeness, Privacy, Personality. The Author hereby grants JoVE the right to use the Author's name, voice, likeness, picture, photograph, image, biography and performance in any way, commercial or otherwise, in connection with the Materials and the sale, promotion and distribution thereof. The Author hereby waives any and all rights he or she may have, relating to his or her appearance in the Video or otherwise relating to the Materials, under all applicable privacy, likeness, personality or similar laws.

9. Author Warranties. The Author represents and warrants that the Article is original, that it has not been published, that the copyright interest is owned by the Author (or, if more than one author is listed at the beginning of this Agreement, by such authors collectively) and has not been assigned, licensed, or otherwise transferred to any other party. The Author represents and warrants that the author(s) listed at the top of this Agreement are the only authors of the Materials. If more than one author is listed at the top of this Agreement and if any such author has not entered into a separate Article and Video License Agreement with JoVE relating to the Materials, the Author represents and warrants that the Author has been authorized by each of the other such authors to execute this Agreement on his or her behalf and to bind him or her with respect to the terms of this Agreement as if each of them had been a party hereto as an Author. The Author warrants that the use, reproduction, distribution, public or private performance or display, and/or modification of all or any portion of the Materials does not and will not violate, infringe and/or misappropriate the patent, trademark, intellectual property or other rights of any third party. The Author represents and warrants that it has and will continue to comply with all government, institutional and other regulations, including, without limitation all institutional, laboratory, hospital, ethical, human and animal treatment, privacy, and all other rules, regulations, laws, procedures or guidelines, applicable to the Materials, and that all research involving human and animal subjects has been approved by the Author's relevant institutional review board.

10. JoVE Discretion. If the Author requests the assistance of JoVE in producing the Video in the Author's facility, the Author shall ensure that the presence of JoVE employees, agents or independent contractors is in accordance with the relevant regulations of the Author's institution. If more than one author is listed at the beginning of this Agreement, JoVE may, in its sole discretion, elect not take any action with respect to the Article until such time as it has received complete, executed Article and Video License Agreements from each such author. JoVE reserves the right, in its absolute and sole discretion and without giving any reason therefore, to accept or decline any work submitted to JoVE. JoVE and its employees, agents and independent contractors shall have

ARTICLE AND VIDEO LICENSE AGREEMENT

full, unfettered access to the facilities of the Author or of the Author's institution as necessary to make the Video, whether actually published or not. JoVE has sole discretion as to the method of making and publishing the Materials, including, without limitation, to all decisions regarding editing, lighting, filming, timing of publication, if any, length, quality, content and the like.

11. **Indemnification.** The Author agrees to indemnify JoVE and/or its successors and assigns from and against any and all claims, costs, and expenses, including attorney's fees, arising out of any breach of any warranty or other representations contained herein. The Author further agrees to indemnify and hold harmless JoVE from and against any and all claims, costs, and expenses, including attorney's fees, resulting from the breach by the Author of any representation or warranty contained herein or from allegations or instances of violation of intellectual property rights, damage to the Author's or the Author's institution's facilities, fraud, libel, defamation, research, equipment, experiments, property damage, personal injury, violations of institutional, laboratory, hospital, ethical, human and animal treatment, privacy or other rules, regulations, laws, procedures or guidelines, liabilities and other losses or damages related in any way to the submission of work to JoVE, making of videos by JoVE, or publication in JoVE or elsewhere by JoVE. The Author shall be responsible for, and shall hold JoVE harmless from, damages caused by lack of sterilization, lack of cleanliness or by contamination due to the making of a video by JoVE its employees, agents or independent contractors. All sterilization, cleanliness or decontamination procedures shall be solely the responsibility of the Author and shall be undertaken at the Author's

expense. All indemnifications provided herein shall include JoVE's attorney's fees and costs related to said losses or damages. Such indemnification and holding harmless shall include such losses or damages incurred by, or in connection with, acts or omissions of JoVE, its employees, agents or independent contractors.

12. **Fees.** To cover the cost incurred for publication, JoVE must receive payment before production and publication the Materials. Payment is due in 21 days of invoice. Should the Materials not be published due to an editorial or production decision, these funds will be returned to the Author. Withdrawal by the Author of any submitted Materials after final peer review approval will result in a US\$1,200 fee to cover pre-production expenses incurred by JoVE. If payment is not received by the completion of filming, production and publication of the Materials will be suspended until payment is received.

13. **Transfer, Governing Law.** This Agreement may be assigned by JoVE and shall inure to the benefits of any of JoVE's successors and assignees. This Agreement shall be governed and construed by the internal laws of the Commonwealth of Massachusetts without giving effect to any conflict of law provision thereunder. This Agreement may be executed in counterparts, each of which shall be deemed an original, but all of which together shall be deemed to be one and the same agreement. A signed copy of this Agreement delivered by facsimile, e-mail or other means of electronic transmission shall be deemed to have the same legal effect as delivery of an original signed copy of this Agreement.

A signed copy of this document must be sent with all new submissions. Only one Agreement required per submission.

CORRESPONDING AUTHOR:

Name:

Department:

Institution:

Article Title:

Signature: Date:

Please submit a signed and dated copy of this license by one of the following three methods:

- 1) Upload a scanned copy of the document as a pdf on the JoVE submission site;
- 2) Fax the document to +1.866.381.2236;
- 3) Mail the document to JoVE / Attn: JoVE Editorial / 1 Alewife Center #200 / Cambridge, MA 02139

For questions, please email submissions@jove.com or call +1.617.945.9051

Dear reviewers,

We have addressed each of the points. Thank you for your input and positive comments regarding our manuscript.

Sincerely,

Daniel Vogt and John Rubenstein

Editorial comments:

1. References are missing DOIs. Please make sure that your references comply with JoVE instructions for authors. In-text formatting: corresponding reference numbers should appear as superscripts after the appropriate statement(s) in the text of the manuscript. Citation formatting should appear as follows: (For 6 authors or less list all authors. For more than 6 authors, list only the first author then *et al.*): [Lastname, F.I., LastName, F.I., LastName, F.I. Article Title. *Source*. **Volume** (Issue), FirstPage – LastPage, doi:DOI, (YEAR).]

Response: We have used track changes to add the DOIs and the issue number to each reference. There is one reference, Batisto-Brito et al (reference #7), for which there is no issue number reported for, potentially based on the particular journal (Current topics in developmental biology).

2. Please keep the editorial comments from your previous revisions in mind as you revise your manuscript to address peer review comments. For instance, if formatting or other changes were made, commercial language was removed, etc., please maintain these overall manuscript changes.

3. Please take this opportunity to thoroughly proofread your manuscript to ensure that there are no spelling or grammar issues. Your JoVE editor will not copy-edit your manuscript and any errors in your submitted revision may be present in the published version.

4. If your figures and tables are original and not published previously, please ignore this comment. For figures and tables that have been published before, please include phrases such as “Re-print with permission from (reference#)” or “Modified from..” etc. And please send a copy of the re-print permission for JoVE’s record keeping purposes.

Reviewers' comments:

Reviewer #1:

Manuscript Summary:

Cortical and hippocampal GABAergic interneurons are mainly derived from the embryonic medial and caudal ganglionic eminences (MGE and CGE); these interneurons have been implicated in psychiatric and neurological disorders including epilepsy, schizophrenia, bipolar disorders and autism. In this manuscript, using available Cre-driver lines and Cre-dependent expression vectors, Vogt and colleagues clearly developed a powerful technique that can efficiently transduce MGE stem/progenitor cells before transplantation.

Previously, people often inject Cre-reporter viruses into the brains of mice expressing Cre to observe the behaviors of restricted cells, however, viruses always do not spread far from the injection site. In contrast, MGE cells have the ability to migrate. Thus, the protocol described in this study can be used to investigate many interesting things, such as the behaviors of a specific subgroup of MGE cells that transduce with virus that expressing different genes.

That data are convincing, the images are high quality and the writing is clear. I only have some comments that need authors to answer in DISCUSSION.

Major Concerns:

1. Transplanting E13.5 MGE cells directly into P0-P3 cortex will bypass an important step in the development of interneurons-long distance tangential migration from the MGE to cortex. What is the by-effect of this method?

Response: The inability to assess tangential migration is a major drawback of transplantation directly into the neocortex. We have added text in the discussion, addressing how this particular aspect of cortical interneuron development can be addressed. This involves injecting transduced cells into the MGE of an age-matched embryo, thus allowing them to migrate and develop in the same manner as endogenous cells. For many labs, this is a hurdle because it requires major revisions and dedication to animal protocols, due to a more invasive procedure, while the transplantation into neonates is less invasive. However, we have added text to the discussion to address how to solve this dilemma if labs want to pursue these experiments.

Minor Concerns:

2. The authors should discuss the possibilities by performing transplantation experiments using CGE cells.

Response: This is a great idea. We have now added text in the discussion to talk about how one could also use Cre-driver lines to target CGE cells.

3. References 22, 23, 24, are missing in the manuscript.

Response: We only have 21 references in the manuscript. We have read over the text and any extra numbers have been addressed. We apologize for any confusion. This may have been confusing because we submitted a revised manuscript to be reviewed with track changes on, but the manuscript that had the changes had not been accepted. This may have led to the confusion and apologize for this. However, the version that we have now only contains 21 references, which have been verified to be present in the text.

Reviewer #2:

Vogt et al. describe powerful approach to target distinct subpopulations of interneurons in developing forebrain; specifically the neocortex. Interneurons are known to play significant roles in a number of neurodevelopmental disorders, including autism, schizophrenia and epilepsy. Therefore, advanced approaches to trace and manipulate distinct molecular mechanisms of interneurons, as described in this manuscript, are crucial for the advancement of the field. Authors not only report how to label different subpopulations, but also provide insight on how to manipulate molecules of interest at distinct time points of interest and in distinct subpopulations using an elegant combination of Cre-dependent expression lentiviruses and available Cre-driver mouse lines. In addition, described method has several advantages over other similar methodologies and is overcoming previous limitations in the field. Indeed, this is nicely written methods article by one of the leading groups at the forefront of brain development that constantly uses state-of-the-art advanced experimental methodologies.

Here are some minor suggestions that may contribute to the manuscript:

A) Under 1.1 list what temperature and CO₂ concentration was used to grow HEK cells.

Response: We have modified the text to list the temperature and CO₂ content used to grow the HEK293T cells.

B) Under 4.4 - define into what volume of DMEM/10% FBS is MGE collected.

Response: We have modified the text to include a volume that we use that works well for this step of the protocol.

C) Under 5.2. authors could suggest with what to triturate the MGE tissue (pippette, 1 ml tip, or?)

Response: We have added text to this section that recommends using a P1000 pipette tip, which is what we have had success using.

D) Was CAG promoter excised from pCAGGs using SpeI and XbaI sites ligated into SpeI and XbaI sites of pLenti-CAG-Flex-GFP or only into XbaI site (page 9)?

Response: Thank you for bringing this clarity issue to our attention. Our insert had a 5' SpeI and a 3' XbaI restriction site and we ligated this fragment into the single XbaI site of the vector. This resulted in an insert which destroyed the 5' XbaI site yet conserved the 3' XbaI site. We have now added text in this section to make it more clear.

E) In Figure 5, authors could define in the figure legend what DPT stands for.

Response: We have added text to the figure legend to define DPT.

Reviewer #3:

In this protocol Vogt et al., describe a detailed procedure for lentiviral labeling of MGE cells

as a method to genetically manipulate progenitors fated to become cortical GABAergic interneurons prior to transplantation. The research group has pioneered this protocol and approach and are authorities on its applications. Overall the manuscript is very well written, clearly outlining every step involved in the procedure with additional/ alternative strategies. I only have a few minor suggestions:

1) Page 2, Line 70-85: Since there are multiple publications on the same procedure, it may be useful to add a few sentences describing representative results and/ or advantages of this approach in the long abstract.

Response: We agree and have added another sentence at the end of the long abstract that states why this approach is advantageous (i.e. it combines powerful genetic tools and the ability of these cells to disperse from an injection site).

2) Page 3, Lines 127-128: Primary goal of the procedure is not to create injury but to inject MGE cells. I would rephrase 'site of injury' to 'site of injection'.

Response: We have deleted text that refers to this site as an injury and just refer to it as the injection site.

3) Page 7, Line 277: Please include trituration procedures and be consistent throughout the manuscript mentioning the pipettes used for trituration procedures. For example, section 6.3 (Page 8, Line 330) mentions P2 or P10 pipette for those steps but nowhere else.

Response: We have changed the text in 6.3 to focus on an optimal pipette. We also added text to section 5.2 in the trituration of the MGE cells as this was also mentioned by reviewer 2.

4) Page 7, Line 287: How long are MGE tissue incubated with the lentivirus? Incubation time is not mentioned anywhere except in the discussion (Page 12, Line 521).

Response: Thank you for noticing this lack in the protocol. We have now added text in section 5.3 to address the length of incubation time and a warning to incubation times that go too long.

5) Page 7, Line 319-320: with a clean paper towel.

Response: This was a difficult section, because JoVE policies do not allow us to state the actual protocol of using distinct products to remove excess media (i.e. Kimwipes), which is necessary to concentrate the pellet which will be injected. We have modified the text in section 6.3 to be more general and added an extra line about why this particular part of the procedure is important.

6) Page 9, Line 371: For readers who are not familiar with anesthetizing P1 pups by hypothermia, it would be useful to include a sentence or two on how to facilitate recovery from hypothermia.

Response: We have added text in the note below section 6.4 to address how one can recover a

pup from hypothermia.

6