

# Journal of Visualized Experiments

## A surgical procedure for resecting the mouse rib: a model for large-scale long bone repair --Manuscript Draft--

|  |  |
|--|--|
| <b>Manuscript Number:</b>  | JoVE52375R1  |
| <b>Full Title:</b>   | A surgical procedure for resecting the mouse rib: a model for large-scale long bone repair   |
| <b>Article Type:</b>   | Invited Methods Article - JoVE Produced Video  |
| <b>Keywords:</b>   | Rib; resection; Bone; periosteum; mouse; long bone; endochondral ossification  |
| <b>Manuscript Classifications:</b>   | 1.2.165: Cartilage; 1.2.835: Skeleton; 1.2.835.232: Bone and Bones; 95.51.19: genetics (animal and plant); 95.51.3: animal biology; 95.51.4: animal models   |
| <b>Corresponding Author:</b>   | Francesca Mariani<br>University of Southern Califor<br>LOS ANGELES, CA UNITED STATES   |
| <b>Corresponding Author Secondary Information:</b>   |  |
| <b>Corresponding Author E-Mail:</b>  | fmariani@usc.edu   |
| <b>Corresponding Author's Institution:</b>   | University of Southern Califor   |
| <b>Corresponding Author's Secondary Institution:</b>   |  |
| <b>First Author:</b>   | Nikita Tripuraneni   |
| <b>First Author Secondary Information:</b>   |  |
| <b>Other Authors:</b>  | Nikita Tripuraneni<br>Marissa K Srouf<br>John Funnell<br>Thu Zan Thu Thein   |
| <b>Order of Authors Secondary Information:</b>   |  |
| <b>Abstract:</b>   | <p>This protocol introduces researchers to a new model for bone repair utilizing the mouse rib. The procedure details the following: preparation of the animal for surgery, opening the thoracic body wall, exposing the desired rib from the surrounding intercostal muscles, excising the desired section of rib without inducing a pneumothorax, and closing the incisions. Compared to the bones of the appendicular skeleton, the ribs are highly accessible. In addition, no internal or external fixator is necessary since the adjacent ribs provide a natural fixation. The surgery uses commercially available supplies, it straightforward to learn, and well-tolerated by the animal. The procedure can be carried out with or without removing the surrounding periosteum, and therefore the contribution of the periosteum to repair can be assessed. We have found that if the periosteum is retained robust repair occurs in 1-2 months. Our hope is that this protocol will stimulate research into rib repair and that the findings will facilitate the development of new ways to stimulate bone repair in other locations around the body.</p> |
| <b>Author Comments:</b>  |  |
| <b>Additional Information:</b>   |  |
| <b>Question</b>  | <b>Response</b>  |
| If this article needs to be "in-press" by a certain date to satisfy grant requirements, please indicate the date below and |  |

|  |  |
|--|--|
| explain in your cover letter.  |  |
| If this article needs to be filmed by a certain date to due to author/equipment/lab availability, please indicate the date below and explain in your cover letter. |  |



**Title:**

A surgical procedure for resecting the mouse rib: a model for large-scale long bone repair

**AUTHORS:**

Tripuraneni, Nikita  
Eli and Edythe Broad Center for Regenerative Medicine and Stem Cell Research  
Keck School of Medicine, University of Southern California  
Los Angeles, CA  
[nikitatc@gmail.com](mailto:nikitatc@gmail.com)

Srour, Marissa K.  
Eli and Edythe Broad Center for Regenerative Medicine and Stem Cell Research  
Keck School of Medicine, University of Southern California  
Los Angeles, CA  
[marissasrour@gmail.com](mailto:marissasrour@gmail.com)

Funnell, John W.  
Eli and Edythe Broad Center for Regenerative Medicine and Stem Cell Research  
Keck School of Medicine, University of Southern California  
Los Angeles, CA  
[jfunnell@usc.edu](mailto:jfunnell@usc.edu)

Thein, Thu Zan Tun  
Eli and Edythe Broad Center for Regenerative Medicine and Stem Cell Research  
Keck School of Medicine, University of Southern California  
Los Angeles, CA  
[ThuZan.Thein@med.usc.edu](mailto:ThuZan.Thein@med.usc.edu)

Mariani, Francesca V.  
Eli and Edythe Broad Center for Regenerative Medicine and Stem Cell Research  
Keck School of Medicine, University of Southern California  
Los Angeles, CA  
[fmariani@usc.edu](mailto:fmariani@usc.edu)

**CORRESPONDING AUTHOR:**

Mariani, Francesca V.  
Eli and Edythe Broad Center for Regenerative Medicine and Stem Cell Research  
Keck School of Medicine, University of Southern California  
Los Angeles, CA  
[fmariani@usc.edu](mailto:fmariani@usc.edu)

**KEYWORDS:**

Rib; resection; bone; periosteum; mouse; long bone; endochondral ossification

**SHORT ABSTRACT:**

The overall goal of this procedure is to successfully resect a portion of bone from the rib of a mouse. The procedure was developed as a model to study large-scale long bone repair.

**LONG ABSTRACT:**

This protocol introduces researchers to a new model for large-scale bone repair utilizing the mouse rib. The procedure details the following: preparation of the animal for surgery, opening the thoracic body wall, exposing the desired rib from the surrounding intercostal muscles, excising the desired section of rib without inducing a pneumothorax, and closing the incisions. Compared to the bones of the appendicular skeleton, the ribs are highly accessible. In addition, no internal or external fixator is necessary since the adjacent ribs provide a natural fixation. The surgery uses commercially available supplies, is straightforward to learn, and well-tolerated by the animal. The procedure can be carried out with or without removing the surrounding periosteum, and therefore the contribution of the periosteum to repair can be assessed. Results indicate that if the periosteum is retained, robust repair occurs in 1-2 months. We expect that use of this protocol will stimulate research into rib repair and that the findings will facilitate the development of new ways to stimulate bone repair in other locations around the body.

**INTRODUCTION:**

Debilitating skeletal injury, chronic osteoarthritis, and the severe problems associated with reconstructive surgery impact economic productivity, family well-being, and quality of life. While small breaks and lesions can heal fairly well, humans are not capable of repairing large defects and therefore must rely on reconstructive procedure to restore structure and function. Reconstruction may involve allogeneic or heterogeneic grafts, morcellized bone, implanted scaffolds, or distraction osteogenesis. Unfortunately, not only are there persistent morbidity factors associated with these treatments but the original strength of the repaired bone is rarely attained. Thus, new clinical approaches are needed.

One-way to develop innovative methods to treat segmental defects is to study situations in which large-scale repair occurs naturally. Amphibians famously can regenerate skeletal elements, while mammals are considered limited in this ability. However, since the early part of the 20<sup>th</sup> century, a few reports of regeneration in the human rib have been published suggesting that humans may not be so limited<sup>1-4</sup>. Currently this phenomenon is best known by plastic surgeons who use rib material for jaw, face and ear reconstruction, but it is not more broadly appreciated<sup>5</sup>. In order to study this repair in more detail, we have developed a surgical model using the mouse. Using this protocol, researchers can identify the innate factors involved and use this information to facilitate skeletal healing in other locations.

There are many advantages to using the ribs as a model for studying skeletal repair. First, the surrounding ribs provide a natural fixator (as compared to resection of the femur<sup>6,7</sup>). This decreases the morbidity risk of internal and external fixators and simplifies the surgical procedure. Secondly, the thin muscular layers of the chest wall provide for easy access and

excellent visibility which make the assay comparable to the convenience of calvarial resections<sup>8</sup>. Thirdly, in contrast to the calvariae which form by intramembranous ossification, the ribs form by endochondral ossification and grow in length via extension at growth plates located at either end of a central diaphysis. Therefore, repair of the ribs may be more comparable to repair of the long bones of the appendicular skeleton. Furthermore, we have found that compared to the femur, the periosteum of the rib is thicker and can be more easily manipulated. Thus, investigators who wish to assay bone repair for the purpose of studying the periosteum or testing cell therapies, pharmacological agents, and/or tissue scaffolds may find this surgical model useful. In summary, this rib resection model provides a context within which to study natural large-scale bone repair in mammals as no such model in general use currently exists.

#### **PROTOCOL:**

All procedures are in accordance with an animal protocol approved by the Institutional Animal Care and Use Committee (IACUC) at the University of Southern California.

#### **1. Preparation for surgery**

1.1) Lay out the necessary surgical tools and supplies (sterilized, items 1-18 in Materials list) and arrange a dissecting microscope and a fiber optics trans-illuminator in a hood or on a downdraft table.

1.2) Place a sexually mature mouse (20-30g, 1-3 months old) in an induction chamber with 4% isoflurane to induce anesthesia.

1.3) Confirm anesthesia with a paw and/or tail pinch test.

1.4) Apply ointment to the mouse's eyes to avoid eye dryness during the surgery.

1.5) Move the mouse to the microscope stage. Place the mouse into the nose cone of the maintenance hose and position laterally. Provide a warming pouch adjacent to the animal to help maintain body temperature.

**NOTE:** Position of the mouse is dependent on personal preference and/or handedness of the surgeon., either left or right side is fine.

1.6) Adjust isoflurane to 2-3% for maintenance, and watch breathing rate.

1.7) Inject buprenorphine (0.05 mg/kg) subcutaneously (lateral flank of the leg) for post-surgery pain with a 25G needle. The leg may twitch which is a normal response.

#### **2. Opening incision**

2.1) Detect the desired rib by palpation, and clear the area of hair with a shaver.

**NOTE:** Ribs 8-10 are recommended since ribs 1-7 are closer to the lungs and 11-13 are considerable shorter. Counting the ribs should begin with the most rostral rib as number 1.

2.2) Prepare the area with alternating povidone-iodine and isopropanol (70%) swabbing (3x is often recommended by animal use protocols).

2.3) Cut a 2 cm incision through the skin, directly above and parallel to the desired rib with medium sized microsurgery scissors. Incise through the underlying muscle and fat layers.

2.4) Place all 3 layers (skin, muscle, fat) into a retractor to expose the surgical area, while minimizing the size of the incision.

### **3. Excising the rib**

3.1) Cut through the intercostal muscles overlying the desired section of rib with a 5.0 mm scalpel. Position this incision around 5mm proximal to the chondrocostal joint as this is where the rib is not as highly curved. Carefully separate the muscle from the bone with fine tip forceps.

3.2) To create a resection while retaining the periosteum in the animal, cut through the periosteum, along the length of rib with a 5.0 mm scalpel. Carefully separate the periosteum from the underlying bone laterally with fine tip forceps. Proceed with caution, as the periosteum is very delicate and has a gelatinous consistency.

3.3) Next make a cross-section through the bone at one end with fine micro-scissors. If needed, measure the resection with a reticle in the microscope or a ruler type gauge. Then carefully lift the bone out of the periosteum and cut the other end.

**NOTE:** Proceed with caution. This is the most delicate step, as pulling up without excising the rib below will tear the pleural membrane and result in a pneumothorax. If the pleural membrane is torn this will be readily evident as the interior of the thoracic cavity will become visible.

3.4) If bleeding occurs as a result of cutting the bone, apply pressure at the cut end with a cotton-tipped swab for 4-5 seconds to stop the bleeding.

**NOTE:** On the rare occasion that bleeding continues it may be necessary to stop and euthanize the animal as significant blood loss will compromise recovery (without fluid replacement, the maximum blood volume which can be safely be lost is 10% of the total blood volume or 7.7-8  $\mu\text{l/g}$ . For a 25 g mouse, this is equivalent to around 180-200  $\mu\text{l}^9$ ).

3.5) Immediately place the removed rib into 4% PFA for future analysis.

**NOTE:** If the resection of both the bone and the periosteum is to be carried out, omit the periosteum incision and separation (steps 3.2). Since the periosteum is very tightly attached to the pleural membrane proceed cautiously, teasing the rib away from the pleural membrane with forceps to avoid tearing.

#### **4. Closing the incision**

4.1) Suture the intercostal muscles over the top of the remaining periosteal sleeve with 9-0 sutures (2 sutures are usually sufficient). Place the sutures directly above the cut ends of the rib, to act as indicators for surgery location.

4.2) Remove the retractor. Suture the overlying muscle and fat with 9-0 sutures (3-4 sutures are usually sufficient). In mice with particularly thick layers of muscle and/or fat, suture each layer separately (e.g. 1 layer of sutures for the muscular layer and 1 layer of sutures for the fatty layer).

4.3) Close the skin with 7-0 sutures (4-5 sutures are usually sufficient).

4.4) Secure the incision with suture glue, pinching the edges together with large forceps.

4.5) Slowly wean the mouse off isoflurane by first adjusting to 1% for few minutes and then turn off.

4.6) Place the mouse under a heat lamp and leave until consciousness is regained, 5 to 10 minutes. After consciousness is regained and throughout the healing period, the mouse should move and ambulate normally and show no signs of distress.

#### **5. Recovery and analysis**

5.1) Provide post-operative pain management including the administration of buprenorphine in an oral gelatin form at 0.5mg/kg every 12 hours for 48 hours<sup>10</sup>. Oral administration does not require restraining the animal which might cause pain to the thoracic region.

5.2) Maintain the mouse in a cage with free access to food and water during the healing period. After the incision is dry, female animals can be co-housed while males must remain isolated to prevent fighting.

5.3) After the healing period, follow the approved procedure for euthanasia. Remove the rib cage for fixation and analysis.

## REPRESENTATIVE RESULTS:

Animals typically recover quickly from this procedure, the incision heals well, and the animals exhibit normal behavior. The procedure uses commercially available supplies and after practice, can be completed in under 1 hour. Before using this procedure to generate experimental data, it is important to analyze the resection at the day 0 time point to determine if any large bone fragments might remain within the resection zone. One way to assess proper procedure is to assess the animals by X-ray or microCT imaging postoperatively, although this will typically require special radiation safety approvals. Instead, another simple assessment can be completed by carrying out a skeletal staining preparation as illustrated in Figure 1A. This involves collecting the rib cage, fixing it in EtOH, and staining with alizarin red using a standard protocol<sup>11</sup>. It can be useful to omit the potassium hydroxide (used to digest away the soft tissues) so that the sample can still be used afterwards for histological analysis if so desired. The sample can still be visualized without the potassium hydroxide steps by clearing in 80% glycerol because the overlying body wall muscle layer is thin. Or alternatively, these muscles can be removed manually prior to fixation/staining as is shown here (Figure 1A).

The portion of bone removed can also be analyzed. If the goal was to retain the periosteum in the animal, the bone portion should have a smooth surface as visualized by light microscopy and histological analysis (Figure 1B, B'). A bone portion removed with the periosteum should have a distinctly ragged surface and upon histological examination have an intact overlying periosteal layer, which has the characteristics of a dense irregular connective tissue (Figure 1C, C').

Depending on the goal of the experiment, healing can be assessed at different time points. Observations indicate that 3 mm resections in which the periosteum is retained in the animal typically heal completely within 1-2 months. Repair occurs via the formation of a soft and hard callus, and remodeling. An example of complete repair at 2 months is shown in Figure 2A, A'; repair can be assessed by skeletal preparation (Figure 2A) and histological analysis (Figure 2A'). If the periosteum is also removed, the resection gap is never filled in. Figure 2B shows an example in which some repair has occurred at one end however it is more typical to observe blunt ends. Upon histological analysis, the resection zone is filled with adipose, granulation tissue, and muscle (Figure 2B').

## Figure Legends:

### Figure 1: Example images of resections at day 0.

**A.** Illustration of a rib resection (4.5 mm) collected immediately after surgery. No bone fragments are left behind. Sample was stained with alizarin red (using a standard protocol but omitting any steps with potassium hydroxide to preserve the sample for future histological analysis) and cleared in 80% glycerol. Arrowheads indicate the location of the cut ends. **B.** Removed rib portion from rib cage depicted in A without the periosteum attached. **B'.** Histological section showing minimal periosteum attached to the bone (yellow arrowheads, left) and no periosteum to the right (cross section, stained with hematoxylin and eosin). The yellow asterisk indicates the bone marrow cavity. Mouse ribs do not have extensive trabeculae.

**C.** Removed rib portion showing the periosteum still attached. **C'**. Histological section showing the intact periosteum overlying the bone indicated by a yellow bracket (longitudinal section, stained with hematoxylin and eosin). A yellow asterisk indicates the bone marrow cavity  
*Scale bars: A, B, C = 1mm; B', C' = 100 microns*

**Figure 2: Rib repair post-healing in resections with and without the periosteum.**

**A.** Skeletal preparation following ~2 months of healing after resection, retaining the intact periosteum inside the mouse (prepared as in Figure 1A). Complete repair of the region can be observed. **A'**. Histological section of B showing a restoration of the lamellar bone walls and the bone marrow cavity (hematoxylin and eosin). **B.** Skeletal preparation (alizarin red) following ~3 months of healing after removing both a rib portion and the surrounding periosteum. There was only minimal repair at the cut end shown at the left of the panel. A yellow arrowhead points to the chondrocostal joint. **B'**. Histological section of B showing granulation tissue, adipose, and muscle cells filling in the site of resection (hematoxylin and eosin). *Scale bars: A, B = 1mm; B' = 500 microns; C' = 200 microns*

**DISCUSSION:**

When first learning this protocol, determining where to locate the initial incision can be challenging. However, practice on euthanized mice helps the surgeon learn where to place the initial incision and expose the desired rib to be resected. Working on cadavers also improves the fine-motor skills required to remove the rib portion with or without the periosteum. In addition, someone new to this procedure might find manipulating the fine tools and thin sutures to be difficult. While tying off, excess pulling on the suture can tear the tissues. Thus, some practice suturing also on cadavers could be helpful. Finally if the surgeon is new to surgical procedures with rodents, it may be useful to have another person assist with monitoring and adjusting the anesthesia during the first few surgeries.

The most critical step of this protocol is excising the bone without inducing a pneumothorax (an abnormal collection of air in the pleural space), which is difficult to treat in the mouse since the pleural membrane is too thin to close surgically. The layer of muscle and parietal pleura inferior to the rib is very thin and delicate; hence, precise movements are required to prevent a puncture in the pleural membrane that lies beneath the resection area. This occurs most commonly in steps 3.1 and 3.3. In step 3.1 (separating the bone from the surrounding intercostal muscles), the sharp scalpel and forceps will easily pierce the pleural layer if the point is not kept superficial. In step 3.3 (excising the bone with fine micro-scissors), the placement of the scissors beneath the bone may overcome the tensile strength of the pleural membrane, or the action of breaking the bone may cause the end of the bone fragment to perforate the pleural membrane. We have found that using fine micro-scissors that have a curved tip is beneficial. In addition, as above, it can also be useful to first practice the protocol on euthanized mice. Ultimately, however we have found that this problem can be easily overcome with patience and practice.

Although the rib is an endochondral bone, there may be some potentially important differences between the rib skeleton and the long bones of the appendicular skeleton. From an embryological perspective, the rib skeleton is derived from a different mesodermal compartment (somite) than the appendicular skeleton (lateral plate mesoderm)<sup>12</sup>. Thus it is possible that there are properties that are unique to the rib skeletal progenitors that reflect this difference in developmental history. Therefore, in the long-run, it may be necessary to determine what these unique properties are and then use this information to encourage the progenitors in the limb skeleton to mediate repair with the same facility as seen in the rib.

Another aspect that comes into play concerns the location of the ribs in relation to the respiratory system. Although the flanking ribs provide sufficient stability around the resection such that no external fixator is needed, the repair zone is under the constant movement and strain of lung inflation/deflation. It has been recognized that during bone repair, too much movement can be inhibitory to healing while some movement appears to be important for generating a cartilage intermediate<sup>13,14</sup>. At this point, it is not clear, however it is possible that formation of a cartilage intermediate may be a key step for effective large-scale repair. Thus, movement of the ribs during respiration might facilitate repair (when the periosteum is left behind in the animal). Since movement may be particularly important in this context, developing a method to place a fixator could be useful for studying the biomechanical influences on repair in the future.

By carrying out a rib repair assay in the mouse, one can take advantage of powerful genetic tools that have been developed. For example, using transgenic marks, the origin of the repair cells can be assessed. Transgenic reporters for bone formation (interesting new tools in development from Gazit et al.<sup>15,16</sup>), the endochondral process, and the read-out of important signal transduction pathways can be utilized<sup>12,17</sup>. In addition, mice carrying loss-of-function alleles could be used to determine the signaling pathways required. Currently, no other vertebrate model organism allows such a wide variety of genetic techniques to probe the basic underlying biology of this process.

In addition, while other excellent models for skeletal repair have been developed and have been in use for some time, another context to test scaffolds, compounds, and cell therapies considering the features of rib repair may be beneficial. The establishment of a standard rib repair model complements existing models as the ribs are not required to support the body and repair occurs without stabilization. In addition, the contribution of the periosteum to repair can be easily assessed. Furthermore, because the rib has both cartilage and bone segments, comparisons between the healing of these different but related tissue types may identify a common feature of effective repair.

#### **ACKNOWLEDGMENTS:**

We thank members of the Mariani lab for critical reading of the manuscript. Our funding sources were: the Baxter Medical Scholar Research Fellowship (to M.K.S.), USC undergraduate fellowships and the Provost, Dean Joan M. Schaeffer, and Rose Hills Fellowships, (to M.K.S.). We



also acknowledge a CIRM BRIDGES fellowship through Pasadena City College (to T.T.T.) and the James H. Zumberge Research and Innovation Fund, the USC Regenerative Medicine Initiative, and the NIAMS NIH under Award Number R21AR064462 (to F.V.M).

#### DISCLOSURES:

The authors have nothing to disclose

#### REFERENCES:

- 1 Philip, S. J., Kumar, R. J. & Menon, K. V. Morphological study of rib regeneration following costectomy in adolescent idiopathic scoliosis. *Eur Spine J.* **14** (8), 772-776, doi:10.1007/s00586-005-0949-8, (2005).
- 2 Munro, I. R. & Guyuron, B. Split-rib cranioplasty. *Ann Plast Surg.* **7** (5), 341-346 (1981).
- 3 Taggard, D. A. & Menezes, A. H. Successful use of rib grafts for cranioplasty in children. *Pediatric neurosurgery.* **34** (3), 149-155, doi:56010, (2001).
- 4 Head, J. R. Prevention of Regeneration fo the Ribs: A problem in thoracic surgery. *Archives of Surgery.* **14** (6), 1215-1221 (1927).
- 5 Kawanabe, Y. & Nagata, S. A new method of costal cartilage harvest for total auricular reconstruction: part I. Avoidance and prevention of intraoperative and postoperative complications and problems. *Plastic and reconstructive surgery.* **117** (6), 2011-2018, doi:10.1097/01.prs.0000210015.28620.1c, (2006).
- 6 Cheung, K. M. *et al.* An externally fixed femoral fracture model for mice. *Journal of orthopaedic research : official publication of the Orthopaedic Research Society.* **21** (4), 685-690, doi:10.1016/S0736-0266(03)00026-3, (2003).
- 7 Matthys, R. & Perren, S. M. Internal fixator for use in the mouse. *Injury.* **40 Suppl 4** S103-109, doi:10.1016/j.injury.2009.10.044, (2009).
- 8 Cooper, G. M. *et al.* Testing the critical size in calvarial bone defects: revisiting the concept of a critical-size defect. *Plastic and reconstructive surgery.* **125** (6), 1685-1692, doi:10.1097/PRS.0b013e3181cb63a3, (2010).
- 9 Ask the Vet. *JAX NOTES.* **499**, <http://jaxmice.jax.org/jaxnotes/archive/499c.html>, 2005
- 10 Flecknell, P. A., Roughan, J. V. & Stewart, R. Use of oral buprenorphine ('buprenorphine jello') for postoperative analgesia in rats--a clinical trial. *Laboratory animals.* **33** (2), 169-174 (1999).
- 11 Rigueur, D. & Lyons, K. M. Whole-mount skeletal staining. *Methods in molecular biology.* **1130** 113-121, doi:10.1007/978-1-62703-989-5\_9, (2014).
- 12 Evans, D. J. Contribution of somitic cells to the avian ribs. *Developmental biology.* **256** (1), 114-126 (2003).
- 13 Colnot, C., Thompson, Z., Miclau, T., Werb, Z. & Helms, J. A. Altered fracture repair in the absence of MMP9. *Development.* **130** (17), 4123-4133 (2003).
- 14 Lu, C. *et al.* Cellular basis for age-related changes in fracture repair. *Journal of orthopaedic research : official publication of the Orthopaedic Research Society.* **23** (6), 1300-1307, doi:10.1016/j.orthres.2005.04.003.1100230610, (2005).
- 15 Zilberman, Y., Gafni, Y., Pelled, G., Gazit, Z. & Gazit, D. Bioluminescent imaging in bone. *Methods in molecular biology.* **455** 261-272, doi:10.1007/978-1-59745-104-8\_18, (2008).

- 16 Pelled, G. & Gazit, D. Imaging using osteocalcin-luciferase. *Journal of musculoskeletal & neuronal interactions*. **4** (4), 362-363 (2004).
- 17 Elefteriou, F. & Yang, X. Genetic mouse models for bone studies--strengths and limitations. *Bone*. **49** (6), 1242-1254, doi:10.1016/j.bone.2011.08.021, (2011).

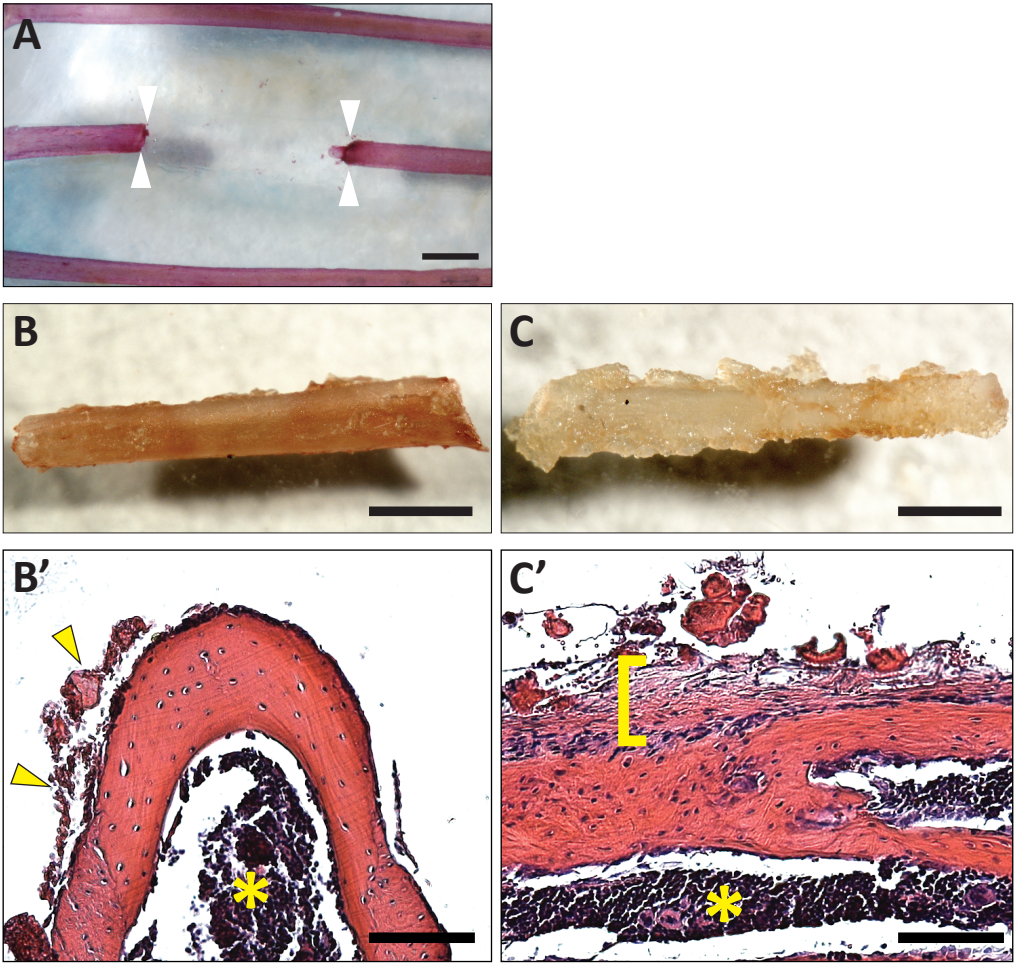
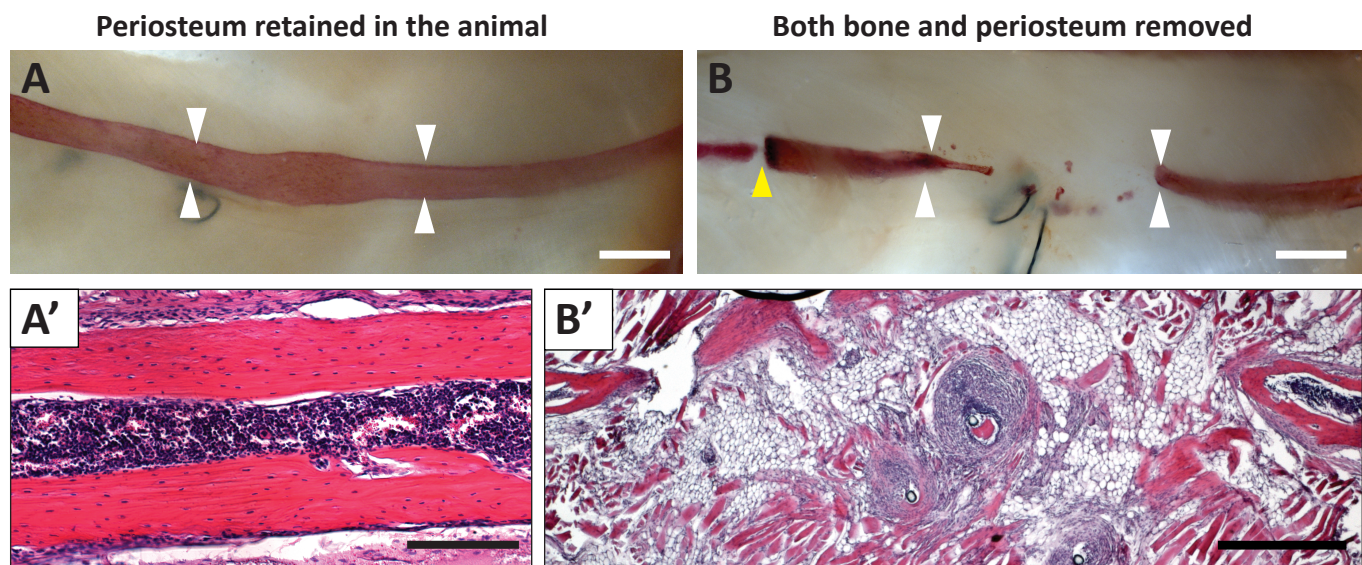


Figure 2

[Click here to download Figure: JoVE-Rib\\_Figure1-2\\_07292014 2.pdf](#)



| Item | Name of Reagent/ Equipment   | Company            |
|------|--|--------------------|
| 1    | Medium sized micro-dissection scissors<br>(Vannas-Tübingen Spring Scissors 5 mm) | Fine Science Tools |
| 2    | Fine micro-dissection scissors (Vannas<br>Spring Scissors - 2mm Cutting Edge)    | Fine Science Tools |
| 3    | Micro-scalpel 5.0 mm   | Fine Science Tools |
| 4    | Dumont 55 forceps  | Fine Science Tools |
| 5    | Retractor  | Fine Science Tools |
| 6    | Micro-needle holders   | Fine Science Tools |
| 7    | 9.0 nylon sutures (Ethilon), taper point best                                    | Ethicon            |
| 8    | 7.0 prolene sutures (Prolene)  | Ethicon            |
| 9    | Large forceps (Adson Forceps)  | Fine Science Tools |
| 10   | Lubricant Eye Ointment (Akwa Tears)  | Akorn              |
| 11   | Suture glue (GLUture Topical Tissue<br>Adhesive)                                 | Abbot              |
| 12   | Shaver   | Wahl               |
| 13   | Clamp lamp   | Zoo Med            |
| 14   | Infrared Bulb, 75W   | Zoo Med            |
| 15   | RC <sup>2</sup> Rodent Anesthesia System   | VetEquip           |
| 16   | IsoFlo (Isoflurane)  | Abbot              |
| 17   | Buprenorphine (Buprenex)   | Reckitt Benckiser  |
| 18   | Betadine   | Purdue Frederick   |
| 19   | Flavored Gelatin, raspberry  | Jell-O             |

| Catalog Number       | Comments/Description                              |
|----------------------|---|
| 15003-08             |   |
| 15000-04             | curved tip is beneficial                          |
| 10315-12             | other fine scalpels can be substituted            |
| 11295-51             |   |
| 17004-05             | adjustability is convenient                       |
| 12060-01             |   |
| 2819G or similar     | taper point best but reverse cutting is also good |
| 8700H or similar     | 6-0 can be used too, needle point can vary        |
| 11006-12             | other brands are fine                             |
| 17478-062-35         |   |
| 32046-01             | has excellent working time                        |
| 9918-6171 or similar |   |
| LF-5                 |   |
| RS-75                |   |
| 922100               |   |
| 05260-05             |   |
| 12496-0757-1         |   |
| 67618015017          |   |
| B000E1FYLO           | made up firm, to the consistency of 'jigglers'    |



## ARTICLE AND VIDEO LICENSE AGREEMENT

Title of Article: A surgical procedure for resecting the mouse rib: a model for large-scale long bone repair

Author(s): Tripuraneni, Nikita, Srour, Marissa K., Funnell, John W., Thein, Thu Zan Tun, and Mariani, Francesca V.

Item 1 (check one box): The Author elects to have the Materials be made available (as described at <http://www.jove.com/publish>) via: ☒ Standard Access ☐ Open Access

Item 2 (check one box):

- ☒ The Author is NOT a United States government employee.
- ☐ The Author is a United States government employee and the Materials were prepared in the course of his or her duties as a United States government employee.
- ☐ The Author is a United States government employee but the Materials were NOT prepared in the course of his or her duties as a United States government employee.

### ARTICLE AND VIDEO LICENSE AGREEMENT

1. **Defined Terms.** As used in this Article and Video License Agreement, the following terms shall have the following meanings: “**Agreement**” means this Article and Video License Agreement; “**Article**” means the article specified on the last page of this Agreement, including any associated materials such as texts, figures, tables, artwork, abstracts, or summaries contained therein; “**Author**” means the author who is a signatory to this Agreement; “**Collective Work**” means a work, such as a periodical issue, anthology or encyclopedia, in which the Materials in their entirety in unmodified form, along with a number of other contributions, constituting separate and independent works in themselves, are assembled into a collective whole; “**CRC License**” means the Creative Commons Attribution-Non Commercial-No Derivs 3.0 Unported Agreement, the terms and conditions of which can be found at: <http://creativecommons.org/licenses/by-nc-nd/3.0/legalcode>; “**Derivative Work**” means a work based upon the Materials or upon the Materials and other pre-existing works, such as a translation, musical arrangement, dramatization, fictionalization, motion picture version, sound recording, art reproduction, abridgment, condensation, or any other form in which the Materials may be recast, transformed, or adapted; “**Institution**” means the institution, listed on the last page of this Agreement, by which the Author was employed at the time of the creation of the Materials; “**JoVE**” means MyJoVE Corporation, a Massachusetts corporation and the publisher of *The Journal of Visualized Experiments*; “**Materials**” means the Article and / or the Video; “**Parties**” means the Author and JoVE; “**Video**” means any video(s) made by the Author, alone or in conjunction with any other parties, or by JoVE or its affiliates or agents, individually or in collaboration with the Author or any other parties, incorporating all or any portion of the Article, and in which the Author may or may not appear.

2. **Background.** The Author, who is the author of the Article, in order to ensure the dissemination and protection of the Article, desires to have the JoVE publish the Article and create and transmit videos based on the Article. In furtherance of such goals, the Parties desire to memorialize in this Agreement the respective rights of each Party in and to the Article and the Video.

3. **Grant of Rights in Article.** In consideration of JoVE agreeing to publish the Article, the Author hereby grants to JoVE, subject to **Sections 4 and 7** below, the exclusive, royalty-free, perpetual (for the full term of copyright in the Article, including any extensions thereto) license (a) to publish, reproduce, distribute, display and store the Article in all forms, formats and media whether now known or hereafter developed (including without limitation in print, digital and electronic form) throughout the world, (b) to translate the Article into other languages, create adaptations, summaries or extracts of the Article or other Derivative Works (including, without limitation, the Video) or Collective Works based on all or any portion of the Article and exercise all of the rights set forth in (a) above in such translations, adaptations, summaries, extracts, Derivative Works or Collective Works and (c) to license others to do any or all of the above. The foregoing rights may be exercised in all media and formats, whether now known or hereafter devised, and include the right to make such modifications as are technically necessary to exercise the rights in other media and formats. If the “Open Access” box has been checked in **Item 1** above, JoVE and the Author hereby grant to the public all such rights in the Article as provided in, but subject to all limitations and requirements set forth in, the CRC License.

## ARTICLE AND VIDEO LICENSE AGREEMENT

4. **Retention of Rights in Article.** Notwithstanding the exclusive license granted to JoVE in **Section 3** above, the Author shall, with respect to the Article, retain the non-exclusive right to use all or part of the Article for the non-commercial purpose of giving lectures, presentations or teaching classes, and to post a copy of the Article on the Institution's website or the Author's personal website, in each case provided that a link to the Article on the JoVE website is provided and notice of JoVE's copyright in the Article is included. All non-copyright intellectual property rights in and to the Article, such as patent rights, shall remain with the Author.

5. **Grant of Rights in Video – Standard Access.** This **Section 5** applies if the "Standard Access" box has been checked in **Item 1** above or if no box has been checked in **Item 1** above. In consideration of JoVE agreeing to produce, display or otherwise assist with the Video, the Author hereby acknowledges and agrees that, Subject to **Section 7** below, JoVE is and shall be the sole and exclusive owner of all rights of any nature, including, without limitation, all copyrights, in and to the Video. To the extent that, by law, the Author is deemed, now or at any time in the future, to have any rights of any nature in or to the Video, the Author hereby disclaims all such rights and transfers all such rights to JoVE.

6. **Grant of Rights in Video – Open Access.** This **Section 6** applies only if the "Open Access" box has been checked in **Item 1** above. In consideration of JoVE agreeing to produce, display or otherwise assist with the Video, the Author hereby grants to JoVE, subject to **Section 7** below, the exclusive, royalty-free, perpetual (for the full term of copyright in the Article, including any extensions thereto) license (a) to publish, reproduce, distribute, display and store the Video in all forms, formats and media whether now known or hereafter developed (including without limitation in print, digital and electronic form) throughout the world, (b) to translate the Video into other languages, create adaptations, summaries or extracts of the Video or other Derivative Works or Collective Works based on all or any portion of the Video and exercise all of the rights set forth in (a) above in such translations, adaptations, summaries, extracts, Derivative Works or Collective Works and (c) to license others to do any or all of the above. The foregoing rights may be exercised in all media and formats, whether now known or hereafter devised, and include the right to make such modifications as are technically necessary to exercise the rights in other media and formats. For any Video to which this Section 6 is applicable, JoVE and the Author hereby grant to the public all such rights in the Video as provided in, but subject to all limitations and requirements set forth in, the CRC License.

7. **Government Employees.** If the Author is a United States government employee and the Article was prepared in the course of his or her duties as a United States government employee, as indicated in **Item 2** above, and any of the licenses or grants granted by the Author hereunder exceed the scope of the 17 U.S.C. 403, then the rights granted hereunder shall be limited to the maximum rights permitted under such

statute. In such case, all provisions contained herein that are not in conflict with such statute shall remain in full force and effect, and all provisions contained herein that do so conflict shall be deemed to be amended so as to provide to JoVE the maximum rights permissible within such statute.

8. **Likeness, Privacy, Personality.** The Author hereby grants JoVE the right to use the Author's name, voice, likeness, picture, photograph, image, biography and performance in any way, commercial or otherwise, in connection with the Materials and the sale, promotion and distribution thereof. The Author hereby waives any and all rights he or she may have, relating to his or her appearance in the Video or otherwise relating to the Materials, under all applicable privacy, likeness, personality or similar laws.

9. **Author Warranties.** The Author represents and warrants that the Article is original, that it has not been published, that the copyright interest is owned by the Author (or, if more than one author is listed at the beginning of this Agreement, by such authors collectively) and has not been assigned, licensed, or otherwise transferred to any other party. The Author represents and warrants that the author(s) listed at the top of this Agreement are the only authors of the Materials. If more than one author is listed at the top of this Agreement and if any such author has not entered into a separate Article and Video License Agreement with JoVE relating to the Materials, the Author represents and warrants that the Author has been authorized by each of the other such authors to execute this Agreement on his or her behalf and to bind him or her with respect to the terms of this Agreement as if each of them had been a party hereto as an Author. The Author warrants that the use, reproduction, distribution, public or private performance or display, and/or modification of all or any portion of the Materials does not and will not violate, infringe and/or misappropriate the patent, trademark, intellectual property or other rights of any third party. The Author represents and warrants that it has and will continue to comply with all government, institutional and other regulations, including, without limitation all institutional, laboratory, hospital, ethical, human and animal treatment, privacy, and all other rules, regulations, laws, procedures or guidelines, applicable to the Materials, and that all research involving human and animal subjects has been approved by the Author's relevant institutional review board.

10. **JoVE Discretion.** If the Author requests the assistance of JoVE in producing the Video in the Author's facility, the Author shall ensure that the presence of JoVE employees, agents or independent contractors is in accordance with the relevant regulations of the Author's institution. If more than one author is listed at the beginning of this Agreement, JoVE may, in its sole discretion, elect not take any action with respect to the Article until such time as it has received complete, executed Article and Video License Agreements from each such author. JoVE reserves the right, in its absolute and sole discretion and without giving any reason therefore, to accept or decline any work submitted to JoVE. JoVE and its employees, agents and independent contractors shall have



## ARTICLE AND VIDEO LICENSE AGREEMENT

full, unfettered access to the facilities of the Author or of the Author's institution as necessary to make the Video, whether actually published or not. JoVE has sole discretion as to the method of making and publishing the Materials, including, without limitation, to all decisions regarding editing, lighting, filming, timing of publication, if any, length, quality, content and the like.

11. **Indemnification.** The Author agrees to indemnify JoVE and/or its successors and assigns from and against any and all claims, costs, and expenses, including attorney's fees, arising out of any breach of any warranty or other representations contained herein. The Author further agrees to indemnify and hold harmless JoVE from and against any and all claims, costs, and expenses, including attorney's fees, resulting from the breach by the Author of any representation or warranty contained herein or from allegations or instances of violation of intellectual property rights, damage to the Author's or the Author's institution's facilities, fraud, libel, defamation, research, equipment, experiments, property damage, personal injury, violations of institutional, laboratory, hospital, ethical, human and animal treatment, privacy or other rules, regulations, laws, procedures or guidelines, liabilities and other losses or damages related in any way to the submission of work to JoVE, making of videos by JoVE, or publication in JoVE or elsewhere by JoVE. The Author shall be responsible for, and shall hold JoVE harmless from, damages caused by lack of sterilization, lack of cleanliness or by contamination due to the making of a video by JoVE its employees, agents or independent contractors. All sterilization, cleanliness or decontamination procedures shall be solely the responsibility of the Author and shall be undertaken at the Author's

expense. All indemnifications provided herein shall include JoVE's attorney's fees and costs related to said losses or damages. Such indemnification and holding harmless shall include such losses or damages incurred by, or in connection with, acts or omissions of JoVE, its employees, agents or independent contractors.

12. **Fees.** To cover the cost incurred for publication, JoVE must receive payment before production and publication the Materials. Payment is due in 21 days of invoice. Should the Materials not be published due to an editorial or production decision, these funds will be returned to the Author. Withdrawal by the Author of any submitted Materials after final peer review approval will result in a US\$1,200 fee to cover pre-production expenses incurred by JoVE. If payment is not received by the completion of filming, production and publication of the Materials will be suspended until payment is received.

13. **Transfer, Governing Law.** This Agreement may be assigned by JoVE and shall inure to the benefits of any of JoVE's successors and assignees. This Agreement shall be governed and construed by the internal laws of the Commonwealth of Massachusetts without giving effect to any conflict of law provision thereunder. This Agreement may be executed in counterparts, each of which shall be deemed an original, but all of which together shall be deemed to be one and the same agreement. A signed copy of this Agreement delivered by facsimile, e-mail or other means of electronic transmission shall be deemed to have the same legal effect as delivery of an original signed copy of this Agreement.

A signed copy of this document must be sent with all new submissions. Only one Agreement required per submission.

### CORRESPONDING AUTHOR:

Name:

Department:

Institution:

Article Title:

Signature:

Date:

Please submit a signed and dated copy of this license by one of the following three methods:

- 1) Upload a scanned copy of the document as a pdf on the JoVE submission site;
- 2) Fax the document to +1.866.381.2236;
- 3) Mail the document to JoVE / Attn: JoVE Editorial / 1 Alewife Center #200 / Cambridge, MA 02139

For questions, please email [submissions@jove.com](mailto:submissions@jove.com) or call +1.617.945.9051

# Keck School of Medicine of USC

**ELI AND EDYTHE BROAD**  
*Center for Regenerative  
Medicine and Stem Cell  
Research at USC*

August 4, 2014

Dear Michelle Kinahan,

Please find our revised submission to **JoVE**, manuscript# 52375 entitled: "A surgical procedure for resecting the mouse rib: a model for large-scale long bone repair" uploaded to your online system.

We would first like to thank the reviewers and editor for suggestions to improve the paper. Overall the reviewers were very positive. Major suggestions involved clarifying the usefulness of the model while minor suggestions were aimed to help describe the protocol in more detail. We have addressed all major and minor concerns and outlined the changes in the following pages. We hope the concerns have been addressed to everyone's satisfaction and look forward to working with your team to prepare the video portion of the project and thus bring this procedure to the scientific community.

Please don't hesitate to contact me if you need any further information.

Sincerely,

Francesca Mariani, Ph.D.  
Assistant Professor  
[fmariani@usc.edu](mailto:fmariani@usc.edu)  
323-442-7855  
<http://stemcell.usc.edu/>

University of Southern California

1425 San Pablo Street, BCC407, Los Angeles, California 90033-9080 • Tel: 323 442 1626 • Fax: 323 442 4040



## RESPONSE TO REVIEWERS:

### Editorial comments:

In step 1.1, what tools are needed? It would be good to make a table/list of these items.

A reference to the materials list is now included.

Please expand your discussion section to focus more on the details of the protocol and cover the following in detail and in paragraph form: 1) modifications and troubleshooting, 2) limitations of the technique, 3) significance with respect to existing methods, 4) future applications and 5) critical steps within the protocol.

We have now included subheadings covering these suggested topics in the discussion with the exception of the comparison with existing models which is covered in the introduction. Please let us know if you would like us to move that section from the introduction to the discussion.

Please remove the main figure titles from the figure files. Figure titles and legends should not appear in the figure but only be included in the text file.

The titles have now been removed.

Please upload a signed copy of the Author License Agreement with an original signature.

A scanned version is now uploaded.

Please take this opportunity to thoroughly proofread your manuscript to ensure that there are no spelling or grammar issues. Your JoVE editor will not copy-edit your manuscript and any errors in your submitted revision may be present in the published version.

We have proofread the manuscript.

### Reviewer #1:

#### *Manuscript Summary:*

This work describes a method for creating defects in a mouse rib to study bone regeneration. This model is novel and will be of interest to the broad community of researchers studying bone repair. The description of the protocol is excellent.

#### *Major Concerns:*

None.

#### *Minor Concerns:*

None.

Reviewer 1 had no suggested changes.

### Reviewer #2:

#### *Major Concerns:*

My major concern with this model is the clinical relevance. In treatment of large bone defects the additional provided biomechanical environment by any kind of stabilisation method is a major influencing factor for the reconstruction of the missing bone. Even the presented method is well described and the point was made that the other ribs are helping to stabilise the defect, its use is limited to address questions to overcome large bone defects.

Indeed the exact reason for using this model is to provide a context within which to study large bone defects in mammals as no such model currently exists. To address the concerns of this reviewer we have made this point more obviously in the introduction.

If the authors could provide a reliable stabilisation technique or could provide a defined understanding of the biomechanical environment, when leaving the defect untreated, the model would gain higher

clinical/research value.

As requested, in the discussion section on limitations, we now elaborate on the biomechanical environment and how future studies could adapt this model to address this very interesting variable in repair.

*Minor Concerns:*

FIG.2 B - Please explain the defect on the left of the rib (not the defect itself). It seems that there was an additional fracture?

The gap at the left is the chondrocostal joint. This is now clarified in the figure and the accompanying legend.

**Reviewer #3:**

*Manuscript Summary:*

This article describes a technique to resect a portion of rib that could be used to study bone healing. The development in a mouse, using a controlled surgical technique, is an advance to the field as it 1) overcomes the high variability of long bone fracture healing and 2) works in mice and thus can be used to study genetic models. This is a nice article.

*Major Concerns:*

It would be nice to see images of what the healing looks like. Either CT or histology. In the same way, the text discusses good and bad surgeries as based on x-ray. Sample images would be nice.

A full description of the stages of healing will be included in another publication. For the moment we have included both a whole mount alizarin red preparation and also histology of the repair when completed (Figure 2B') which shows the repair at higher resolution than an Xray or CT image.

Good and bad surgeries can be assessed post-operatively by Xray or microCT on live animals. However this typically needs to be part of the animal use protocol. We do not currently have this approved. This caveat is now explained in the text.

*Minor Concerns:*

Does the mouse rib have a marrow cavity? Does it have trabecular bone? These details would be nice to know to help understand the model.

Figure 1B' shows the marrow cavity and the low presence of trabecular bone and this is now explained in the figure/figure legend.

Do all mice have 13 ribs? Do you recommend counting backwards from the bottom (13) or if there is variation in the mouse counting from 1?

There is reported variation caudally although we have not encountered this in CD-1 C57BL/6 strains. Counting should start from the top as #1. This is now explained in the protocol.

Step 2.2 says to alternate beta dine and alcohol. How many times each?

This depends on your animal use protocol. At USC, it needs to be done 3X. We have now included this repetition in the protocol and will adjust based on JoVE's recommendations.

Step 3.3 has a note about a pneumothorax. A sentence or two telling the investigator how they would know they have induced one would be helpful.

This is now included.

Step 3.4 What constitutes 'significant' blood loss.

Detailed specifics on blood loss is now included.

Step 4.4 What does 'secure the edges with large forceps mean in the context of gluing the incision.

This will be demonstrated in the video but essentially involves pinching the edge of the incision together. This is now more explicitly described.

Step 5.1 Is there something special about oral buprenorphine? If not, maybe be less specific and just stay to administer buprenorphine.

Oral buprenorphine is easier to administer as it does not require restraining the animal. This is now explained.

Step 5.2 So males can never be group housed?

Yes, this is basic knowledge for anyone who works with mice and is now explained.

Step 5.3 It would be helpful to know how the animals recover. Are they moving and ambulating normally and if so, when post-surgery?

The animals should show no signs of any problems at any time after recovery from anesthesia. This is now indicated in step 4.6.

Figures: Consider labeling something other than B' and C'. This was confusing to see B and B'.

The letters with prime are the same type of sample as without. We are happy to take recommendations from JoVE copy editors in this regard (Would B1, B2; C1, C2 be preferred?)

#### **Reviewer #4:**

##### *Major Concerns:*

Is this really a bone repair model? It seems that it is more a segmental defect that fills in with new bone formation. Although these two mechanisms might be somewhat similar, the title is not covering the text.

We have now changed the title to clarify this as a 'large-scale' repair model.

##### *Minor Concerns:*

In the protocol under 1.5 they should state what side the mouse is positioned. Lateral with right or left side up?

Either side is fine and dependent on preference and handedness of the surgeon. This point is now included.

In the protocol under 3.1 what is meant by proximal? Do they mean lateral?

The location is lateral with reference to the surgeon looking down on the animal but proximal with reference to the animal. We hope the video will clarify this.

Under 3.2: describe more specific how to get the periosteum of the rib.  
Again we hope the video will clarify this.

Under 3.3: Speed (swift) does not necessarily mean "bad" in surgery. Reword.

We have reworded this sentence.

Under 4.1: do you need to close the periosteum (tubularize)?

It is not feasible to do this since the periosteum is so thin.