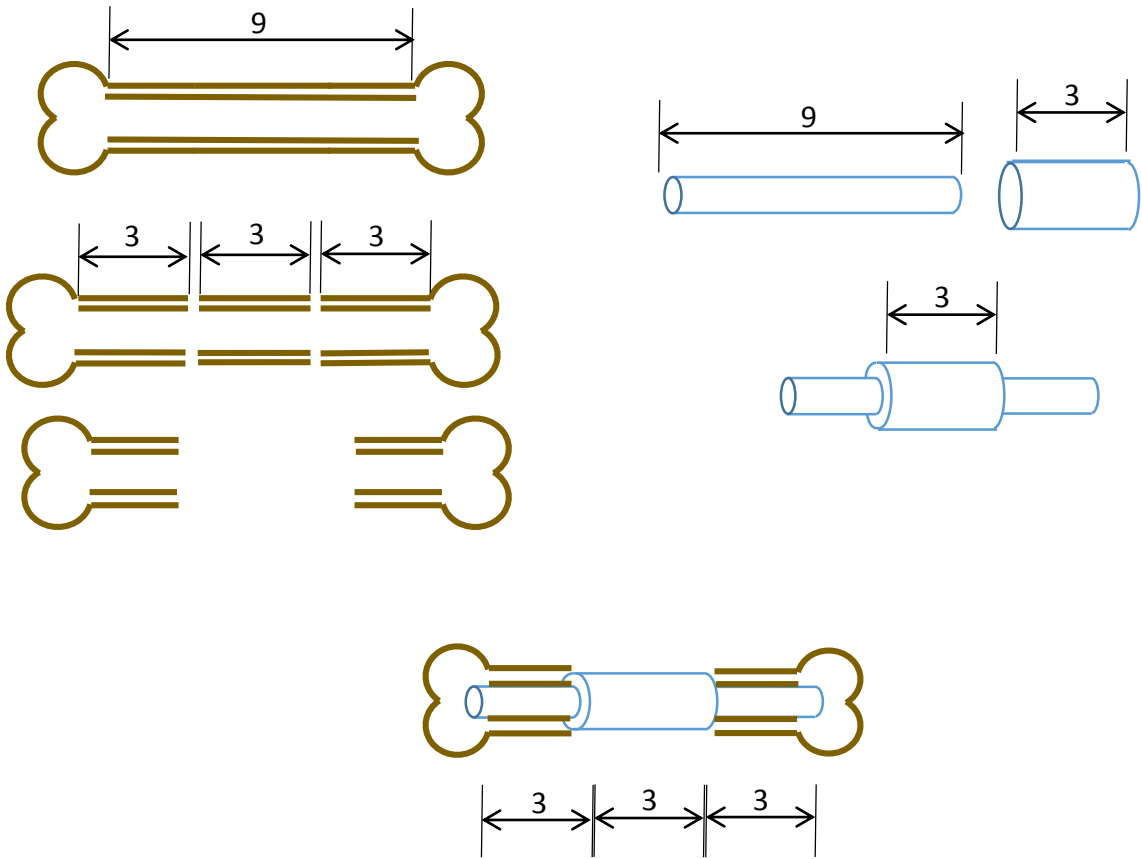
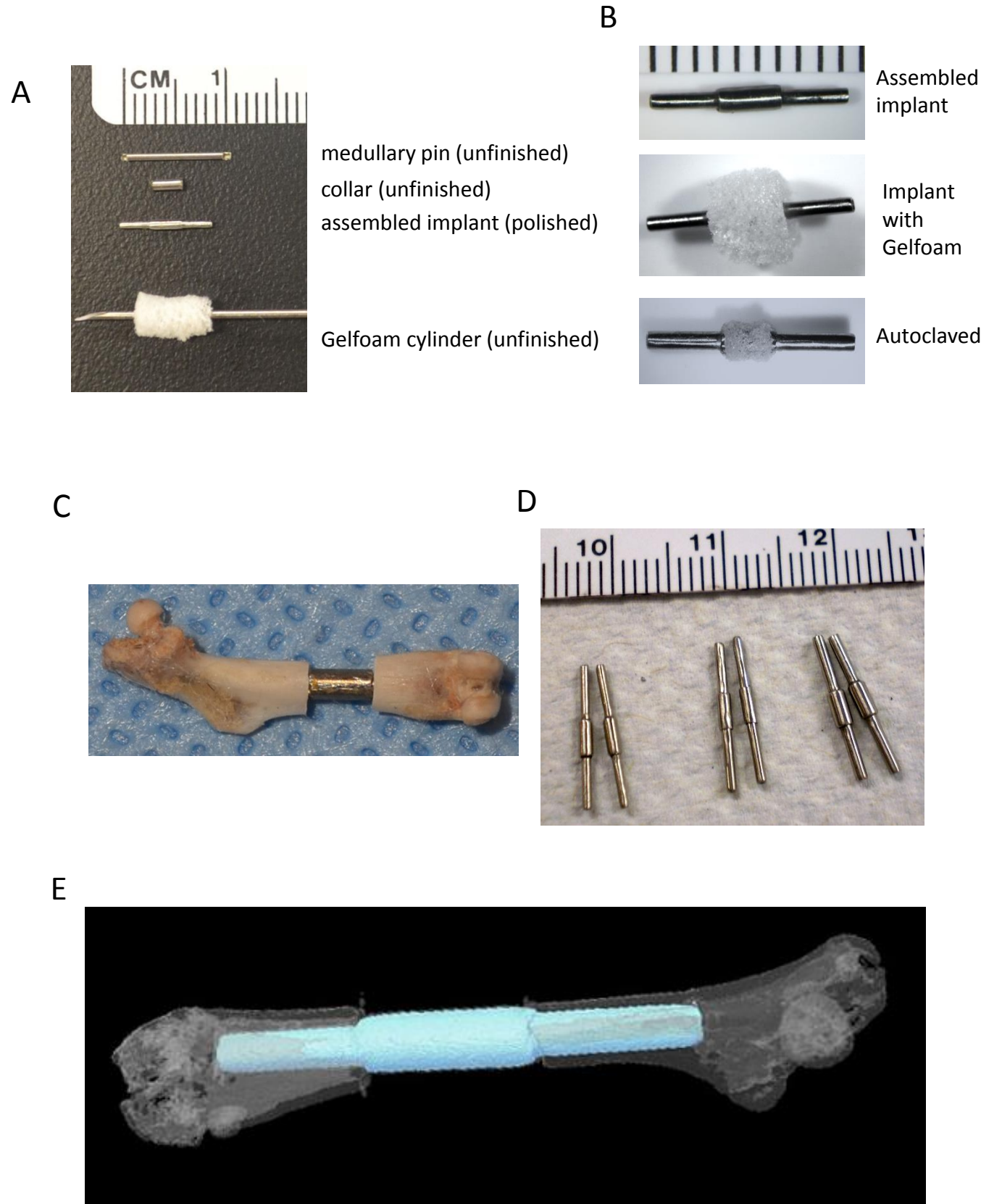


**Fig 1:** Principle of the model.



**Fig 2: Pin assembly procedure.**

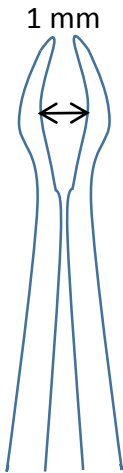


**Fig 3: Surgery instruments.**

A.

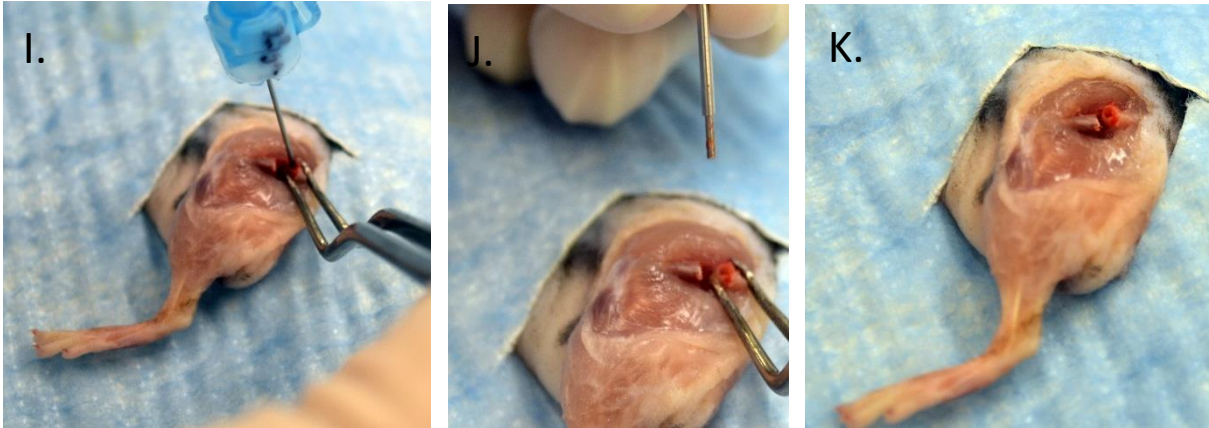
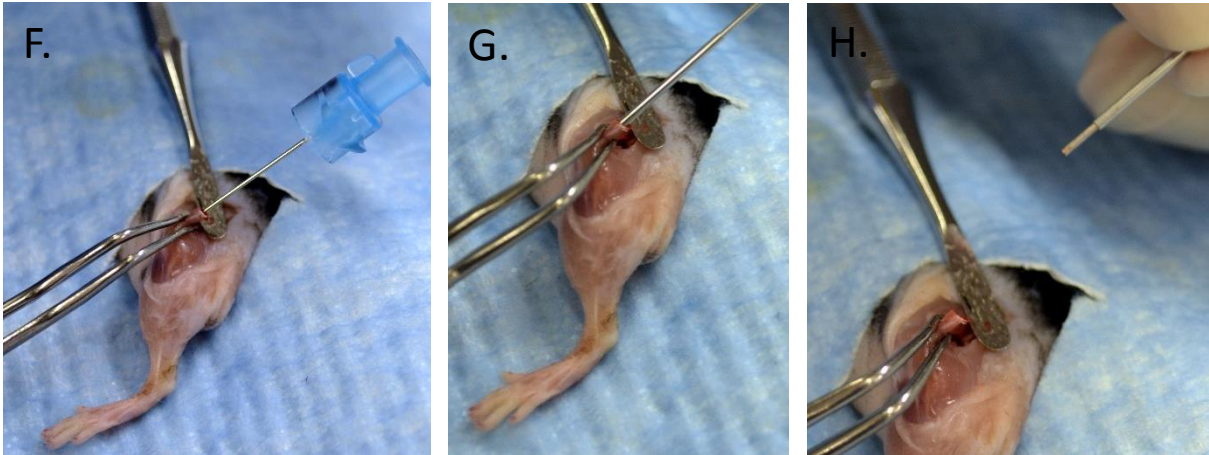
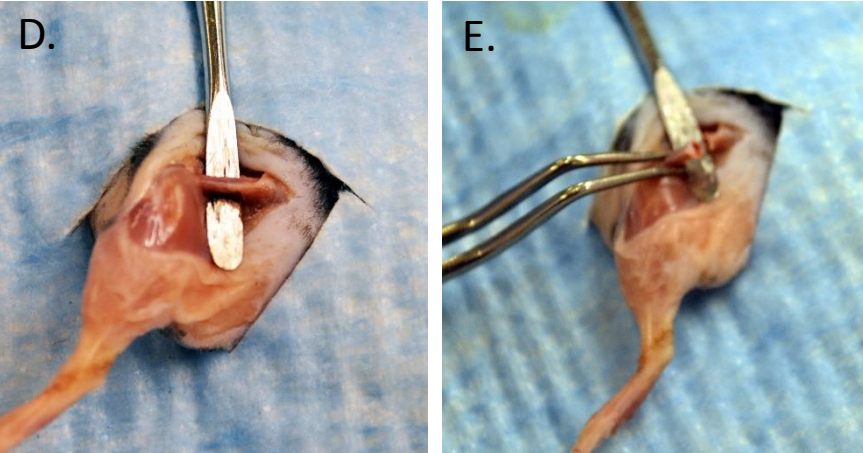
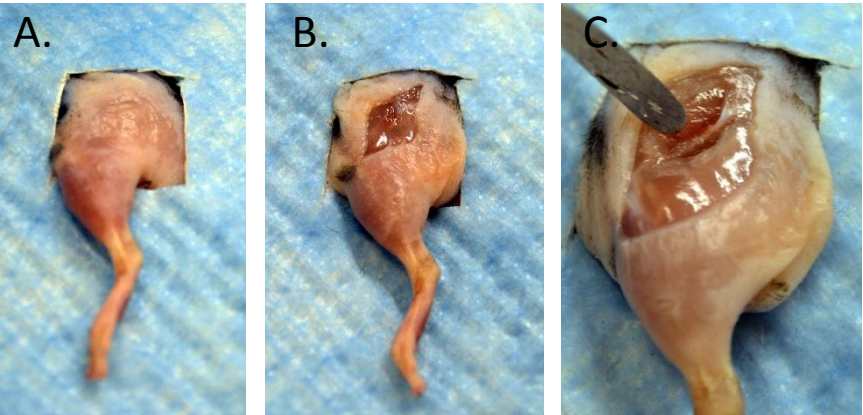


B.



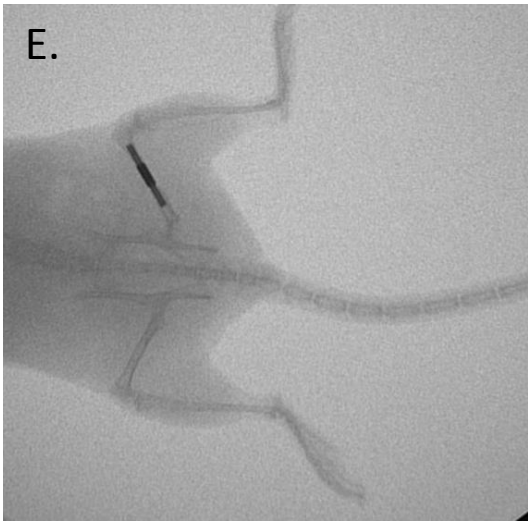
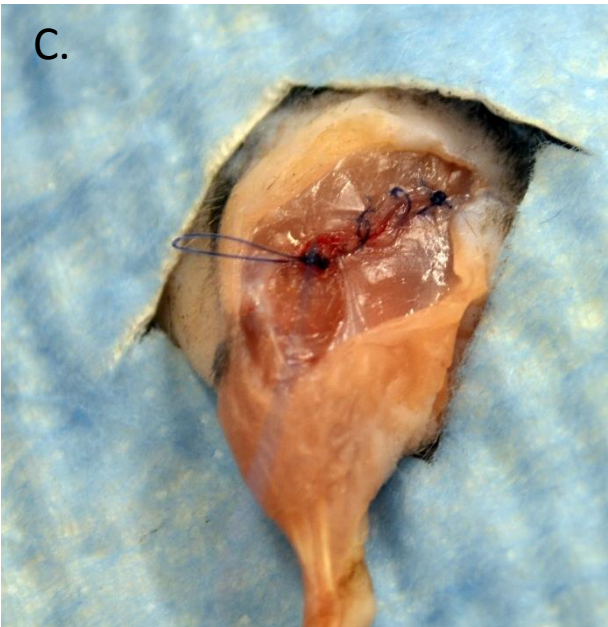
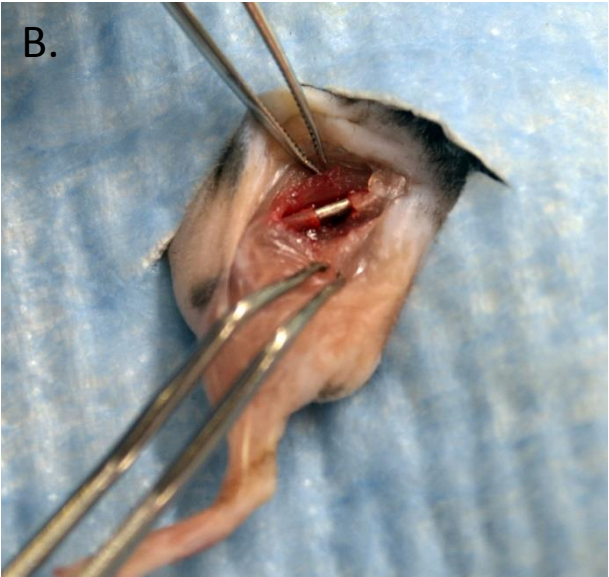
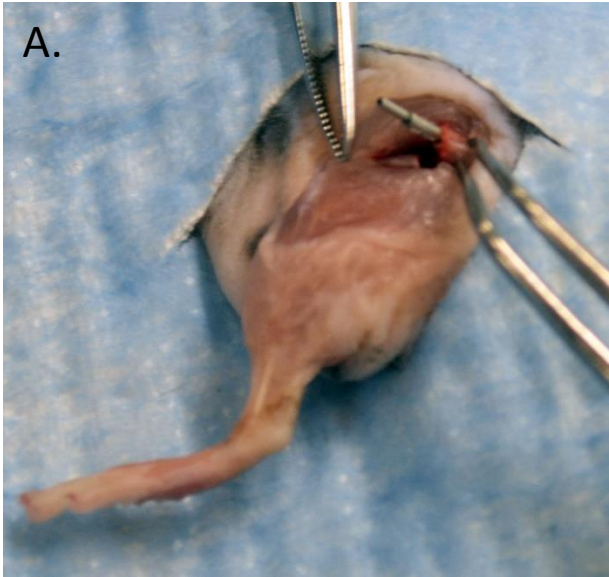


**Fig 4: Surgery procedure.**





**Fig 5: Surgery procedure.**

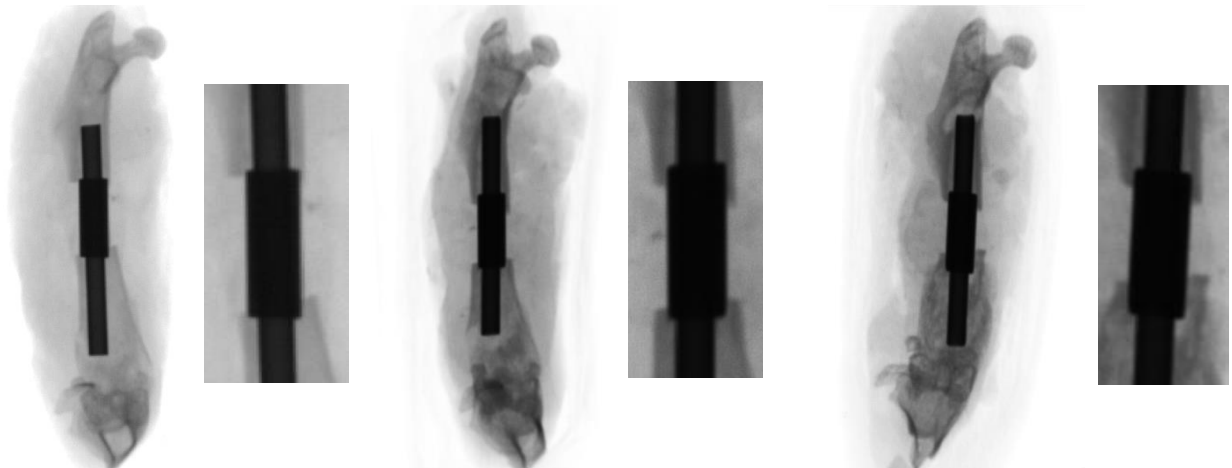


**Fig 6:** Example data.

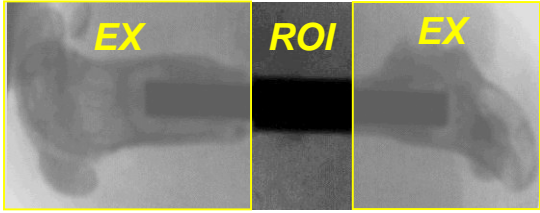
A. day 7

day 14

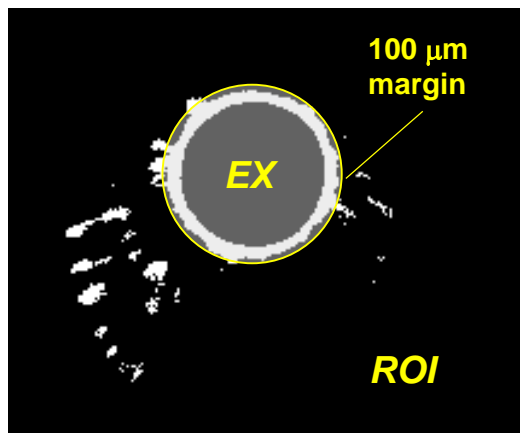
day 21



B. Scan ROI

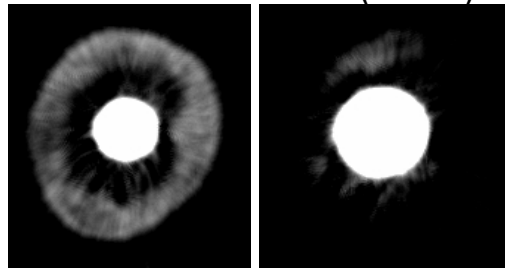


Axial ROI

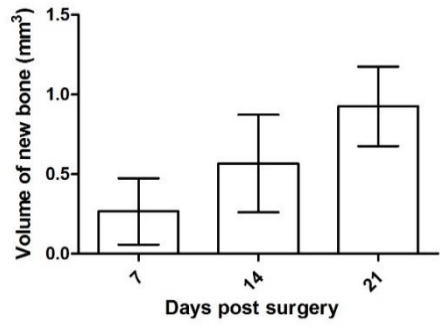


Pin

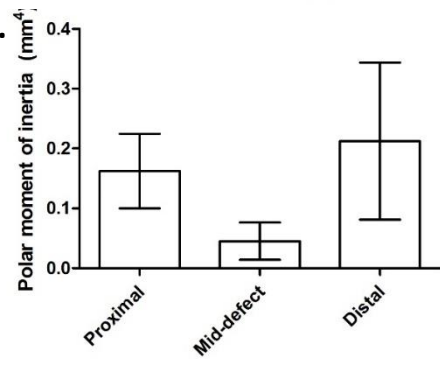
Collar (defect)



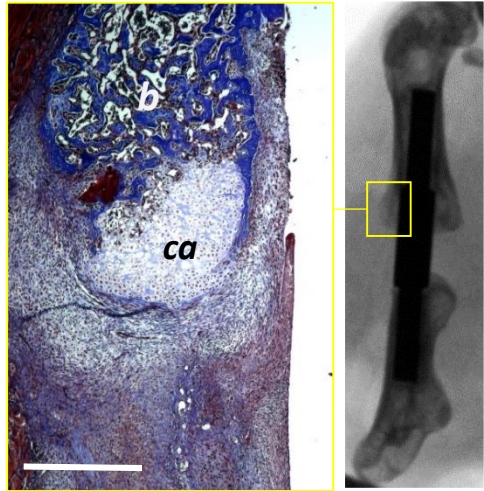
C.



D.



E.



F.

