

Journal of Visualized Experiments

Adapting Human Videofluoroscopic Swallow Study Methods to Detect and Characterize Dysphagia in Murine Disease Models

--Manuscript Draft--

Manuscript Number:	JoVE52319R2
Full Title:	Adapting Human Videofluoroscopic Swallow Study Methods to Detect and Characterize Dysphagia in Murine Disease Models
Article Type:	Methods Article - JoVE Produced Video
Keywords:	mouse, murine, rodent, rat, swallowing, deglutition, dysphagia, videofluoroscopy, radiation, iohexol, barium, palatability, taste, translational, disease models
Manuscript Classifications:	3.10.574: Neurodegenerative Diseases; 3.10.668: Neuromuscular Diseases; 3.18.654.521: Malnutrition; 3.22.232: Disease Models, Animal; 3.22.795: Rodent Diseases; 3.5: Musculoskeletal Diseases; 3.6: Digestive System Diseases; 3.8: Respiratory Tract Diseases; 95.53.4: behavioral sciences
Corresponding Author:	Teresa E Lever, Ph.D University of Missouri Columbia, Missouri UNITED STATES
Corresponding Author Secondary Information:	
Corresponding Author E-Mail:	levert@health.missouri.edu
Corresponding Author's Institution:	University of Missouri
Corresponding Author's Secondary Institution:	
First Author:	Teresa E Lever, Ph.D
First Author Secondary Information:	
Other Authors:	Sabrina M Braun, BHS
	Ryan T Brooks, MHS
	Rebecca A Harris, BHS
	Loren L Littrell, BHS
	Ryan M Neff, BS
	Cameron J Hinkel
	Mitchell J Allen, BS
	Mollie A Ulsas, BHS
Order of Authors Secondary Information:	
Abstract:	This study adapted human videofluoroscopic swallowing study (VFSS) methods for use with murine disease models for the purpose of facilitating translational dysphagia research. Successful outcomes are dependent upon three critical components: test chambers that permit self-feeding while standing unrestrained in a confined space, recipes that mask the aversive taste/odor of commercially-available oral contrast agents, and a step-by-step test protocol that permits quantification of swallow physiology. Elimination of one or more of these components will have a detrimental impact on the study results. Moreover, the energy level capability of the fluoroscopy system will determine which swallow parameters can be investigated. Most research centers have high energy fluoroscopes designed for use with people and larger animals, which results in exceptionally poor image quality when testing mice and other

	<p>small rodents. Despite this limitation, we have identified seven VFSS parameters that are consistently quantifiable in mice when using a high energy fluoroscope in combination with the new murine VFSS protocol. We recently obtained a low energy fluoroscopy system with exceptionally high imaging resolution and magnification capabilities that was designed for use with mice and other small rodents. Preliminary work using this new system, in combination with the new murine VFSS protocol, has identified 13 swallow parameters that are consistently quantifiable in mice, which is nearly double the number obtained using conventional (i.e., high energy) fluoroscopes. Identification of additional swallow parameters is expected as we optimize the capabilities of this new system. Results thus far demonstrate the utility of using a low energy fluoroscopy system to detect and quantify subtle changes in swallow physiology that may otherwise be overlooked when using high energy fluoroscopes to investigate murine disease models.</p>
Author Comments:	See attached letter of revisions.
Additional Information:	
Question	Response
If this article needs to be "in-press" by a certain date to satisfy grant requirements, please indicate the date below and explain in your cover letter.	
If this article needs to be filmed by a certain date to due to author/equipment/lab availability, please indicate the date below and explain in your cover letter.	

TITLE:

Adapting Human Videofluoroscopic Swallow Study Methods to Detect and Characterize Dysphagia in Murine Disease Models.

AUTHORS:

Lever, Teresa E.

Department of Otolaryngology – Head and Neck Surgery

University of Missouri

Columbia, Missouri, USA

levert@health.missouri.edu

Braun, Sabrina M.

Department of Communication Science and Disorders

University of Missouri

Columbia, Missouri, USA

smnth2@mail.missouri.edu

Brooks, Ryan T.

Department of Communication Science and Disorders

University of Missouri

Columbia, Missouri, USA

rtbgg3@mail.missouri.edu

Harris, Rebecca A.

Department of Communication Science and Disorders

University of Missouri

Columbia, Missouri, USA

rah522@mail.missouri.edu

Littrell, Loren L.

Department of Communication Science and Disorders

University of Missouri

Columbia, Missouri, USA

lllkcc@mail.missouri.edu

Neff, Ryan M.

Department of Medicine

University of Missouri

Columbia, Missouri, USA

rmnvc8@health.missouri.edu

Hinkel, Cameron J.

Department of Medicine

University of Missouri

Columbia, Missouri, USA

cjhtyd@health.missouri.edu

Allen, Mitchell J.
Department of Otolaryngology – Head and Neck Surgery
University of Missouri
Columbia, Missouri, USA
mjagg7@mail.missouri.edu

Ulsas, Mollie A.
Department of Communication Science and Disorders
University of Missouri
Columbia, Missouri, USA
mauww3@mail.missouri.edu

CORRESPONDING AUTHOR:

Teresa E. Lever
Department of Otolaryngology – Head and Neck Surgery
University of Missouri
Columbia, Missouri, USA
levert@health.missouri.edu

KEYWORDS: mouse, murine, rodent, swallowing, deglutition, dysphagia, videofluoroscopy, radiation, iohexol, barium, palatability, taste, translational, disease models

SHORT ABSTRACT:

This study successfully adapted human videofluoroscopic swallowing study (VFSS) methods for use with murine disease models for the purpose of facilitating translational dysphagia research.

LONG ABSTRACT:

This study adapted human videofluoroscopic swallowing study (VFSS) methods for use with murine disease models for the purpose of facilitating translational dysphagia research. Successful outcomes are dependent upon three critical components: test chambers that permit self-feeding while standing unrestrained in a confined space, recipes that mask the aversive taste/odor of commercially-available oral contrast agents, and a step-by-step test protocol that permits quantification of swallow physiology. Elimination of one or more of these components will have a detrimental impact on the study results. Moreover, the energy level capability of the fluoroscopy system will determine which swallow parameters can be investigated. Most research centers have high energy fluoroscopes designed for use with people and larger animals, which results in exceptionally poor image quality when testing mice and other small rodents. Despite this limitation, we have identified seven VFSS parameters that are consistently quantifiable in mice when using a high energy fluoroscope in combination with the new murine VFSS protocol. We recently obtained a low energy fluoroscopy system with exceptionally high imaging resolution and magnification capabilities that was designed for use with mice and other small rodents. Preliminary work using this

new system, in combination with the new murine VFSS protocol, has identified 13 swallow parameters that are consistently quantifiable in mice, which is nearly double the number obtained using conventional (*i.e.*, high energy) fluoroscopes. Identification of additional swallow parameters is expected as we optimize the capabilities of this new system. Results thus far demonstrate the utility of using a low energy fluoroscopy system to detect and quantify subtle changes in swallow physiology that may otherwise be overlooked when using high energy fluoroscopes to investigate murine disease models.

INTRODUCTION:

Dysphagia (swallowing impairment) is a common symptom of numerous medical conditions affecting people of all ages. Examples include stroke, Parkinson's disease, Alzheimer's disease, cerebral palsy, muscular dystrophy, amyotrophic lateral sclerosis (ALS), Batten disease, head and neck cancer, premature birth, and advanced aging. Dysphagia is highly correlated with mortality, typically as a consequence of severe malnutrition or pneumonia that develops when bacterial-laden food/liquid/saliva is aspirated into the lungs¹⁻⁴. This debilitating and life-threatening medical condition affects over 15 million people each year in the United States alone³. Despite the high prevalence and associated negative outcomes, current treatment options for dysphagia are limited to palliative (rather than curative) approaches, such as diet modification (*e.g.*, avoiding specific food/liquid consistencies), postural changes (*e.g.*, tucking the chin when swallowing), motor approaches (*e.g.*, exercises targeting muscles in the oral cavity, pharynx, and larynx), sensory approaches (*e.g.*, implementing flavor, temperature, and/or mechanical stimulation), and tube feeding [*e.g.*, nutrition and hydration administered via nasogastric (NG) tube or percutaneous endoscopic gastrostomy (PEG) tube]. These treatments merely serve as symptomatic therapy rather than targeting the underlying causes of the problem. Indeed, a major barrier to the discovery of novel, effective treatments for dysphagia is the limited scientific knowledge of the responsible pathological mechanisms, which are likely different for each disease.

Dysphagia diagnosis is predominantly made by using a radiographic procedure called a **videofluoroscopic swallowing study (VFSS)**, also known as a modified barium swallow study. Over the past 30-plus years, this diagnostic test has been considered by speech-language pathologists as the gold-standard for evaluating swallow function⁵⁻⁷. This test entails having the patient sit or stand within the path of the X-ray beam of a fluoroscopy machine while voluntarily ingesting food and liquid consistencies mixed with an oral contrast agent, typically barium sulfate^{8,9} or iohexol¹⁰. As the patient swallows, food and liquid containing contrast agent can be seen in real time via a computer monitor while traveling from the mouth to the stomach. Soft tissue structures also are visible and can be assessed relative to structure and function. Patients are asked to perform several swallows of each food and liquid consistency, all of which are video recorded for subsequent viewing and frame-by-frame analysis to quantify the presence and degree of dysphagia. Numerous physiological components of swallowing are typically analyzed, such as the anatomical trigger point of the pharyngeal swallow, bolus transit time through the pharynx and esophagus, extent and duration of laryngeal

elevation, location and amount of post-swallow residue, and occurrence of and physiological reason for aspiration^{7,11}.

Aspects of the human VFSS protocol were recently adapted for studying freely-behaving rats; however, results were limited because the rats did not remain in the videofluoroscopic field of view during testing¹². VFSS has not previously been attempted with mice. Successful adaptation of the human VFSS protocol for use with mice and rats would provide a novel research method to investigate the hundreds of currently existing murine (mouse and rat) models of diseases that are known to cause dysphagia in humans. This new method (henceforth referred to as **murine VFSS**) would therefore hasten identification and validation of murine models of dysphagia that are suitable for investigating the underlying neurophysiological mechanisms within muscles, nerves, and brain tissue that are pathological and contributing to dysphagia in humans. Moreover, murine VFSS would permit identification of objective measures (biomarkers) of swallow function/dysfunction that could be directly compared with humans. These cross-species videofluoroscopic biomarkers could then serve as novel outcome measures to quantify treatment efficacy in preclinical trials with mice and rats, which would **better translate** to clinical trials with people.

To this end, the murine VFSS protocol was established using ~100 mice of either sex, in accordance with an approved **Institutional Animal Care and Use Committee (IACUC) protocol (#7524) and NIH Guidelines**. All mice were either C57 or hybrid C57/SJL strains. The C57 mice were not genetically altered, whereas C57/SJL was the background strain for a colony of transgenic *SOD1-G93A* (or *SOD1*) mice, the most widely used animal model of ALS. The *SOD1* colony was an approximate 50-50 mix of transgenic (*i.e.*, ALS-affected) mice and nontransgenic (*i.e.*, unaffected) littermates.

The murine VFSS protocol consists of three components:

- 1) Custom-designed **observation chambers** that permit voluntary drinking while standing unrestrained in a confined space within a fluoroscopy machine,
- 2) **Thin liquid recipes** that mask the aversive taste/odor of oral contrast agents and produce sufficient radiodensity to permit adequate visualization of swallowing,
- 3) A **step-by-step test protocol** that maximizes animal compliance, minimizes total test time and radiation exposure, and permits quantification of several swallow parameters for each stage of swallowing (*i.e.*, oral, pharyngeal, and esophageal).

The combined effect produces a comfortable, low stress, self-feeding examination environment that permits assessment of typical feeding and swallowing behaviors of mice.

PROTOCOL:

The protocol follows the animal care guidelines of University of Missouri. Use ear punch methods for identification purposes rather than metal ear tags, which are radiopaque and visually obstruct portions of the swallowing mechanism under fluoroscopy.

NOTE: Ear punch methods must be used for identification purposes rather than metal ear tags, which are radiopaque and visually obstruct portions of the swallowing mechanism under fluoroscopy.

1. Construct observation chambers from polycarbonate tubing and sheeting (Figure 1).

1.1. Cut 5 cm wide, square polycarbonate tubing (~2 mm wall thickness) into 16 cm lengths using a manual milling machine. Most mice adequately fit within these dimensions, which results in a narrow test chamber that permits walking and turning around as desired. A wall thickness of ~2mm provides adequate rigidity without significantly attenuating the X-ray beam.

1.1.1. Make a small oblong hole (12 mm x 8 mm) in the top of each tube near one end using a manual milling machine. This hole will be used to deliver drinking solutions via a sipper tube spout.

1.2. Cut polycarbonate sheeting (3/4 inch thickness) into end-caps (50 mm x 50 mm, 2 per tube) using a computerized milling machine, also called a computerized numerical control (CNC) machine.

1.2.1. Mill one oblong groove (19 mm x 6 mm) near one edge of the interior face of each end-cap. Use this groove to secure a peg-bowl for mice to drink from during VFSS testing.

1.2.2. Mill 5 round ventilation holes (6 mm diameter) through each end cap.

1.2.3. Mill one smaller round hole (5 mm diameter) through the end-cap, directly above the oblong groove. Use this hole to deliver liquid into the peg-bowl during VFSS testing.

1.2.4. On the exterior face of the end-cap, mill a 9/16 inch diameter counterbore that is 1/4 inch deep around this smaller hole.

1.2.5. Mill away 2 mm along the perimeter of the interior face of the end-cap to a depth of 7 mm to make a step that easily inserts into the end of the tube.

1.2.6. Mill a 1 mm groove into the step of the end-cap to accommodate an O-ring, which is necessary to prevent the end-cap from falling off the end of the tube.

1.2.7. Round off exposed edges and bevel all corners of the end-caps to prevent chewing by mice.

1.2.8. Make peg-bowls from polycarbonate sheeting using a CNC machine. Overall dimensions should be 24 x 19 x 6 mm, with a 10 x 3 mm bowl-shape depression at one end. One peg-bowl is needed for each tube. Peg-bowls should insert snugly into the oblong groove in the end-caps (**Figure 2**).

[Insert Figure 1 here.]

[Insert Figure 2 here.]

2. Construct sipper tubes bottles from centrifuge tubes, silicone stoppers, and metal spouts (Figure 3).

- 2.1. Use a stopper borer (5/16") to make a center hole through each silicone stopper.
- 2.2. Apply a few drops of mineral oil into the bore hole and manually insert a metal spout into the wide end of the stopper. Straight ball-point spouts are preferred because straight open-end spouts result in excessive leaking and splattering of the contrast agent within the observation chamber, which can interfere with visualization during testing.
- 2.3. Adjust the spout length so that it spans the entire length of the silicone stopper and extends approximately 3 cm beyond the wide end of the stopper.
- 2.4. Insert the narrow end of each stopper (containing a sipper tube) into a 30 ml centrifuge tube.
- 2.5. Verify that the spout length is adequate by inserting it through the oblong hole in the top of the observation chamber. The spout tip should rest approximately 1 cm from the chamber ceiling, which is sufficiently long for healthy adult mice to reach.

NOTE: Longer lengths result in mice drinking while turning/tilting the head, which obscures visualization of swallowing during VFSS.

- 2.6. Extend the spout length to accommodate younger mice, smaller sized mouse strains, and mouse disease models that cannot reach the spout due to motor impairment of the limbs.
- 2.7. Wash the newly made spouts before use to remove mineral oil, silicone debris, and other contaminants during handling.

[Insert Figure 3 here.]

3. Construct a syringe delivery system for use with peg-bowls (Figure 4).

- 3.1. Use a lathe to make adapters for connecting polyethylene (PE) tubing to the observation chamber end-caps.
- 3.2. Cut 1/2" diameter acetal resin rod material into 1 1/4" length sections, herein referred to as tube adapters (or adapters).
- 3.3. At one end of each adapter, reduce a 1/2" length section at the tip to 3/16" diameter, referred to herein as the narrow end.

- 3.4. For the remaining 3/4" length section of each adapter (*i.e.*, the 1/2" diameter end), machine grooves for manual gripping during use. This section is herein referred to as the wide end.
- 3.5. In the wide end of each adapter, drill a center hole that is 0.098" diameter and 1" deep.
- 3.6. Drill and ream the remaining portion of the center hole in each adapter to 0.096" to provide a snug fit on the PE tubing.
- 3.7. Cut PE tubing (PE 240, inner diameter 1.67 mm) to the desired length using a scissor. A 3-4 foot length sufficiently increases the distance between the investigator and fluoroscope during VFSS testing to improve radiation safety. Note: Longer lengths will utilize a larger volume of the contrast agent solution during VFSS testing, perhaps greater than the standard 30 ml recipe.
- 3.8. Insert a blunt-tipped 15G needle fully into one end of the PE tubing. The fitting should be snug.
- 3.9. Insert the other (free) end of the PE tubing through the center hole of the adapter tube, starting at the wide end.
- 3.10. Pull the PE tubing out of the narrow end of the adapter so that it extends ~2 mm.
- 3.11. Insert the narrow end of the adapter (with ~2 mm PE tubing extending from it) into the end-cap of an observation tube; it should fit snugly into the counterbored hole located directly above the peg-bowl.
- 3.12. Adjust the PE tubing length at the narrow end of the adapter so that it barely extends above the bowl depression in the peg-bowl.
- 3.13. Fill a 10 ml syringe (without needle attached) with water from a beaker and remove any air bubbles.
- 3.14. Attach the filled syringe to the needle end of the PE tubing.
- 3.15. Slowly push the syringe plunger to deliver water into the peg-bowl in the observation chamber. Stop when the peg-bowl is nearly full. Avoid overfilling, which will cause splattering during drinking.
- 3.16. If the peg-bowl does not fill properly, adjust the length of the PE tubing extending above the peg-bowl.
- 3.17. Over-extension of the PE tubing will entice mice to chew on it during testing, rather than drinking from the peg-bowl.

3.18. If the PE tubing is not extended far enough, liquid will run onto the floor of the observation chamber rather than filling the peg-bowl.

3.19. After use, detach the syringe and wash the entire syringe delivery system with soap and water. Use a 10 ml syringe to push air through the PE tubing to remove water. Sterilize by autoclaving as needed.

[Insert Figure 4 here.]

4. Construct a motorized scissor lift table for remote positioning of the observation chamber (Figure 5).

4.1. Build a scissor lift with a 12 cm by 12 cm platform which can raise and lower by 5 cm to accommodate viewing mice in different positions within the fluoroscopy field of view. Lift material should be metal or plastic for ease of cleaning with disinfectants.

4.2. Mount stepper motors to adjust the height and longitudinal position of the lift.

4.3. Couple the first stepper motor to the scissor lift mechanism to control the height by translating a crossbar. This coupling can be a lead screw or rack-and-pinion gearing.

4.4. Couple the second stepper motor to the scissor lift frame to control the longitudinal position by translating the entire lift frame relative to the table. This coupling can be a lead screw or rack-and-pinion gearing.

4.5. Wire a remote control system to the stepper motors to allow adjustment of the observation tube position during imaging while minimizing investigator exposure to radiation.

4.6. Interface handheld remote control buttons with a microcontroller chip to control the activation and direction of each stepper motor.

[Insert Figure 5 here.]

5. Perform behavioral conditioning before VFSS testing to ensure maximal participation.

5.1. One to two weeks prior to VFSS testing, subject mice to an overnight (12-16 hr) water regulation period to induce thirst, during which time water is withheld from the home cage. This duration and time frame is essential to prevent dehydration, which may occur as a result of two water regulation episodes within one week (*i.e.*, one for behavioral conditioning and another for VFSS testing).

5.2. Place a single observation chamber (with one end closed by an end-cap) on the floor of a home cage containing fresh bedding material. The closed end should be nearest the oval (spout) opening at the top of the chamber. This step ensures adequate ventilation while multiple mice sleep huddled within the chamber depth overnight. The open end allows mice to freely enter/exit the chamber.

5.3. Remove other enrichment material (e.g., nestlet and hut) to encourage mice to explore and sleep in the chamber overnight (**Figure 6**). This step ensures that mice are acclimated to being in the chamber for lengthy durations prior to VFSS testing.

5.4. Provide a single standard food pellet per mouse on the floor of the cage for overnight eating; do not provide water or other hydration sources.

5.5. Use a standard filter top to contain the mice in the cage overnight, as the dimensions of the observation chamber prevent a standard wire lid from fitting in the cage. Store the removed wire lid (containing food and water bottle) on top of the filter top to weigh down the lid and prevent mice from escaping.

5.6. Perform palatability testing the following morning.

5.7. Make a chocolate-flavored test solution in a 30 ml sipper tube bottle, without adding contrast agent (*i.e.*, substitute water for iohexol). This recipe is described in **Table 1**. Make one bottle per cage to be tested.

5.8. Remove the observation chamber and replace the standard wire lid. Offer the chocolate-flavored solution (room temperature, ~22 °C) for 2 minutes per cage, inserted through the wire lid.

5.9. Assess palatability by observing drinking behaviors during the 2 minute test period. The solution is deemed palatable if the majority of mice in each cage have multiple long (≥ 5 seconds) bouts of drinking and if multiple mice simultaneously drink from the spout (**Figure 7**).

5.10. Return the observation chamber to each home cage to continue behavioral conditioning.

5.11. Attach one end-cap to the observation chamber at the end nearest the oval (spout) hole.

5.12. Offer mice the chocolate-flavored solution for 2-3 hours by inserting the sipper tube bottle through the oval hole in the top of the chamber. This step ensures that all mice have been conditioned to drinking deep within the observation chamber.

5.13. Remove the wire lid to accommodate the observation chamber.

5.14. Place 1 food pellet per mouse on the cage floor for ad libitum consumption during the test period.

5.15. Cover the cage with a standard filter top to prevent mice from escaping for the remainder of the behavioral conditioning period. Store the removed wire lid (containing food and water bottle) on top of the filter top to weigh down the lid.

5.16. Provide water and food ad libitum in the home cage when behavioral conditioning is completed.

5.17. Wash the observation chambers (tubes and end-caps) and sipper tube bottles (spouts and centrifuge tubes) with soap and water; sterilize by autoclaving as needed. **Avoid using acetone to clean the tubes** as it causes a permanent clouding effect that makes the tube opaque rather than translucent.

[Insert Figure 6 here.]

[Insert Table 1 here.]

[Insert Figure 7 here.]

6. VFSS Testing.

6.1. Subject mice to an overnight water regulation period (*i.e.*, withhold water for 12-16 hours), as described in Step 6.1 above.

6.2. The following morning, remove soiled observation chambers from cages and briefly rinse with tap water and completely dry in preparation for VFSS testing.

6.2.1. Remove and clean only one chamber at a time to prevent mixing up chambers between cages, which can cause excessive exploratory behaviors that significantly interfere with VFSS testing.

6.2.2. If using peg-bowls for VFSS testing, insert a silicone plug into the spout opening of the observation chamber to prevent exploratory behaviors (**Figure 8**).

6.2.3. Label each chamber (*e.g.*, with the home cage number) to prevent mix up. **PRECAUTION:** Use a **dry erase marker** to label each cleaned tube before placing it back in the home cage. **Permanent marker should be avoided** because it is absorbed by the tube material and does not wash off, even with alcohol or acetone.

6.3. Prepare the chocolate-flavored iohexol solution.

6.3.1. Make a single recipe (30 ml) of the test solution (**Table 1**) for several cages.

6.3.2. **PRECAUTIONS FOR IOHEXOL:** Store unopened iohexol bottles at room temperature, protected from light. Use opened iohexol bottles within 24 hours, as the viscosity and taste may change within a day or so after exposure to air. Alternatively, freeze aliquots of single-servings (15 ml) in centrifuge tubes for long-term storage. Prepared iohexol test solutions must be used within a few hours to ensure freshness and prevent avoidance by mice. Administer iohexol solutions at room-temperature to avoid confounding the study due to temperature effects on swallow function. Do not freeze any remaining prepared test solution, as the chocolate flavor becomes bitter with freezing and results in avoidance by mice.

6.4. Prepare the fluoroscopy environment.

6.4.1. Use a spare (empty) observation chamber and peg-bowl (or sipper tube spout) to determine the optimal height and position within the fluoroscope beam that permits visualization of drinking in the lateral (horizontal) plane.

6.4.2. Set the fluoroscopy frame rate to **30 frames per second**; higher (but not lower) frame rates can be used if available.

6.4.3. Ensure that a radiopaque calibration marker is appropriately placed on the fluoroscope camera/detector so that it is visible on the display monitor during the entire test. This step is necessary to permit calibration of length measurements used for quantifying swallow parameters.

7. VFSS Testing of Mice.

7.1. Observe each cage to identify when a mouse freely enters the observation chamber.

7.1.1. Lift the chamber out of the cage and gently attach the 2nd end-cap (with peg-bowl attached, if a sipper tube will not be used), being careful not to pinch the mouse (especially the tail).

NOTE: This approach minimizes the mouse's stress response due to handling, which is especially important for mice that are being tested for the first time.

7.1.2. With repeated testing, mice can be easily coaxed to enter the chamber when it is placed in front of them inside the cage, or when suspended by the tail over the chamber opening.

7.2. Position the observation chamber (containing the mouse) within the fluoroscopy machine to begin VFSS testing in the lateral plane (*i.e.*, horizontal X-ray beam).

7.3. Provide the chocolate-flavored iohexol solution (**Table 1**) via peg-bowl or sipper tube bottle.

7.3.1. If using a peg-bowl, deliver the solution via the syringe delivery system described in Step 4 above. This system permits fast and easy refilling of the peg-bowl as needed.

7.3.2. If using a sipper tube bottle, insert the sipper tube through the oval opening in the top of the observation chamber. Tilt the bottle so that the spout is directed toward the center of the chamber.

7.4. Start the videofluoroscopy recording when the mouse starts drinking.

7.4.1. Adjust the position of the observation chamber (using the remote-controlled scissor lift table described in Step 5) so that the swallowing mechanism is visible in the field of view.

7.4.2. Pause recording each time the mouse turns away from the peg-bowl or spout to minimize the duration of radiation exposure.

7.4.3. Resume recording when the mouse returns to the spout or peg-bowl.

7.4.4. Refill the peg-bowl as needed.

7.4.5. Stop testing if the mouse does not drink within 5 minutes. The goal is to record several long (≥ 5 seconds) bouts of continuous drinking, which is typical for most mice within the first 2 minutes of testing.

7.4.6. Return noncompliant mice to the home cage (without water) for re-testing at a later time the same day; do not exceed a 24 hour water regulation period.

7.5. If needed, reposition the fluoroscope to test mice in the dorsal-ventral plane (*i.e.*, vertical X-ray beam). This plane is used to identify deviations in bolus flow through the pharynx and esophagus during swallowing.

7.6. When testing multiple mice from the same home cage:

7.6.1. Clean the peg-bowl (and tip of the PE tubing) or sipper tube spout with a dry paper towel between mice.

7.6.2. Clean the observation chamber as needed between mice to remove any splattered iohexol on the chamber walls. Rinse the chamber with tap water and dry with a paper towel.

7.7. When testing mice from a different home cage:

7.7.1. Use a new peg-bowl (or change the sipper tube spout). Otherwise, mice may be distracted by the odor of other mice that drank from the same peg-bowl or sipper tube. The peg-bowls and sipper tubes should be labeled to avoid confusion.

7.8. When testing of all mice in a single cage is completed, provide water and food in the home cage.

7.9. Wash the observation chambers (tubes and end-caps), peg-bowls, syringe delivery system, and sipper tube bottles (spouts and centrifuge tubes, if used) with soap and water; sterilize by autoclaving as needed. Dispose of any remaining iohexol solution as directed by safety guidelines; drain disposal may be acceptable at most facilities.

8. Video Analysis

8.1. Use a video editing software program that permits frame-by-frame analysis of the videofluoroscopy recordings to quantify the swallow parameters of interest (**Table 2**).

[Insert Table 2 here.]

8.2. Identify at least two trained reviewers to analyze each video in a blinded fashion: A primary reviewer and one or two secondary reviewers.

8.2.1. Primary reviewer: View each video to identify and analyze 3 to 5 long (approximately 5 seconds) drinking bouts. This criterion is based on published non-radiographic swallow studies with mice^{13,14} and VFSS with rats¹² showing that 3-5 measures per swallow parameter are sufficient for statistical analyses.

8.2.2. Secondary reviewers: Independently analyze the 3 to 5 measures per swallow parameter for each mouse that were initially identified and analyzed by the primary reviewer.

8.3. Identify reviewer discrepancies for each mouse. Re-analyze all discrepancies as a reviewer group to reach 100% consensus.

8.4. Average the 3 to 5 consensus (*i.e.*, undisputed) values for each swallow parameter to obtain the mean value for each mouse for use in statistical analyses. When fewer than 3 measures are obtained for a single swallow parameter for a given mouse, enter a missing value (*i.e.*, not zero) in the statistical data base for the corresponding swallow parameter.

REPRESENTATIVE RESULTS:

We have successfully designed a novel and replicable murine-specific VFSS protocol that includes test chambers that permit self-feeding, recipes for flavoring oral contrast agents, and a step-by-step test protocol that permits quantification of swallow physiology. The energy level capability of the fluoroscopy system determined which swallow parameters could be investigated in mice. We initially used high energy fluoroscopes designed for use with people and larger animals (*e.g.*, GE Advantx, GE OEC 9600, and Omega Cardiac Cath CS-25, each at 30 frames per second). However, these systems had insufficient magnification capabilities for testing mice, which resulted in the animal filling only a small portion of the field of view (**Figure 9**). As a result, it was

possible to visualize the entire swallowing mechanism of each mouse within a single field of view. However, image quality was exceptionally poor, rendering it impossible to visualize most structures of the swallowing mechanism. Despite this limitation, we identified 7 objective VFSS swallow parameters that were consistently quantifiable for mice when using a conventional (*i.e.*, high energy) fluoroscope in combination with the new murine VFSS protocol (**Table 3**). In addition, we identified the vallecular space as the anatomical trigger point for swallowing in healthy adult mice (3-17 months of age), as well as mice with conditions of advanced age (>18 months) and end-stage ALS.

[Insert Figure 9 here.]

[Insert Table 3 here.]

We recently obtained a low energy magnification fluoroscopy system called The LabScope (Glenbrook Technologies, Randolph, NJ) that was specifically designed for our lab for use with mice and other small rodents **Figure 10**. However, the markedly greater magnification levels of this system rendered it impossible to view the entire swallowing mechanism of a mouse in a single field of view. Instead, two test positions are required, as shown in **Figure 11**. Position 1 permits visualization of the entire head and proximal thoracic region. This position is necessary for assessing the oral and pharyngeal stages of swallowing. Position 2 permits visualization from the swallow trigger point (*i.e.*, valleculae) to the gastroesophageal (GE) junction. This position is necessary for assessing the esophageal stage of swallowing. Preliminary work using The LabScope in combination with the new murine VFSS protocol has identified 13 objective swallow parameters that are consistently quantifiable in mice, which is nearly double the number obtained using high energy (*i.e.*, conventional) fluoroscopes (**Table 3**). This outcome is attributed to the advanced magnification capabilities of the LabScope, which allows for visualization of numerous anatomical structures (**Figure 12**) that were essentially invisible when using conventional systems: *e.g.*, hyoid bone, trachea, and cervical vertebrae. As a result, we also were able to analyze the videos for evidence of laryngeal penetration and aspiration. Neither penetration nor aspiration was observed for any mouse in this study, regardless of health or disease conditions.

[Insert Figure 10 here.]

[Insert Figure 11 here.]

[Insert Figure 12 here.]

Swallow rate and inter-swallow interval are representative VFSS parameters that can be quantified using either low or high energy fluoroscopy systems in combination with the new murine VFSS protocol. These two swallow parameters were quantified for three groups of mice: *SOD1-G93A* (*SOD1*) transgenic mice (*i.e.*, a model of ALS) at disease end-stage between 4-5 months of age, aged C57 mice (18-24 months of age), and a control group of healthy young (4-8 months of age) C57 mice and nontransgenic littermates from the *SOD1* colony. No significant differences were found between young

C57 mice and young nontransgenic (control) mice from the *SOD1-G93A* colony relative to these two swallow parameters; therefore, data were combined into a general “control” group of young healthy mice for comparison with aged C57 mice and end-stage SOD1 mice. Swallow rate (*i.e.*, the number of swallows during 2 consecutive seconds of uninterrupted drinking) was significantly slower for aged C57 mice compared to SOD1 mice and controls. Inter-swallow interval (*i.e.*, the time between two successive swallows) was significantly longer for aged C57 mice compared to SOD1 mice and controls. Thus, these two swallow parameters are impaired for aged C57 mice but not SOD1 mice, as shown in **Figure 13**. This finding supports the notion that dysphagia profiles are likely to be distinctly different for each disease condition.

[Insert Figure 13 here.]

FIGURE LEGENDS:

Figure 1. Observation Chambers.

Observation chambers were designed to maintain freely behaving animals in the fluoroscopy field of view. This figure shows components of the observation chamber essential for conducting VFSS.

Figure 2. Peg-bowls.

Each peg-bowl snaps into a groove in the interior face of each end-cap. Left: unassembled components. Middle: assembled components. Right: exterior face of end-cap.

Figure 3. Sipper Tube Bottles.

Left: unassembled components. Middle: assembled components. Right: mouse drinking from sipper tube in observation chamber.

Figure 4. Syringe Delivery System.

Left: unassembled components. Middle: assembled components. Right: mouse drinking from peg-bowl in observation chamber.

Figure 5. Remote-Controlled Scissor Lift Table.

Left: side view of scissor lift table. Right: lift table with observation chamber positioned in fluoroscope. The lift table adjusts the observation chamber to maintain mice in the field of view.

Figure 6. Mice Exploring Observation Chambers.

Mice are naturally inclined to seek shelter in small spaces. As a result, they freely enter and explore the observation tube when it is placed in the home cage. Most mice are found sleeping in the chamber in the morning.

Figure 7. Palatability Testing.

One indicator of taste preference during palatability testing is the number of mice that simultaneously drink from a single spout in the home cage. This image shows four mice

simultaneously drinking a chocolate-flavored solution, which was identified as the preferred flavor enhancer for C57 and C57/SJL strains.

Figure 8. Silicone Plug When Using Peg-Bowls.

Left: silicone plug. Right: A silicone plug is pulled through the sipper tube opening in the top of the observation chamber. This plug prevents mice from becoming distracted by the spout opening when using a peg-bowl rather than sipper tube during VFSS testing.

Figure 9. High Energy Fluoroscopy Systems.

Left: Representative image of a mouse obtained using high energy (*i.e.*, conventional) fluoroscopy systems. Note that the mouse fills only a small portion of the fluoroscopy field of view, thereby demonstrating the insufficient magnification capability of conventional fluoroscopes for imaging rodents. Right: Same image magnified post-capture using a video editing software program. Black arrow: swallow trigger point (valleculae). White arrow: bolus in the distal esophagus, immediately prior to passing through the GE junction (white asterisk).

Figure 10. The LabScope.

Left: The LabScope performs as a desktop fluoroscope for small animals. Right: Close-up view of the LabScope with labeled components. The scissor lift table is positioning an observation tube within the fluoroscope field of view.

Figure 11. Low Energy Fluoroscopy System.

Images of a mouse obtained using a low energy fluoroscopy system. Note that the high magnification capability prevents visualization of the entire swallow mechanism within the fluoroscopy field of view. Left: Position 1 -- permits visualization of the entire head and proximal thoracic region. The swallow trigger point (black arrow) is essentially centered within the field of view. Right: Position 2 -- permits visualization from the swallow trigger point (black arrow) to the GE junction (white asterisk). Note the bolus passing through the distal esophagus (white arrow).

Figure 12. Anatomical Structures Visible Using a Low Energy Fluoroscopy System.

Even at the lowest magnification setting (left), boney structures of the head and neck of a mouse are readily visible using our low energy fluoroscopy system (*i.e.*, The LabScope). Anatomical structures within the black square are shown (and labeled) at higher magnification to the right. Improved visualization of boney structures permits quantification of several additional swallow parameters that were impossible to analyze using high energy fluoroscopes.

Figure 13. Preliminary Findings.

This figure shows representative preliminary findings for two VFSS swallow parameters quantified using the murine VFSS protocol: swallow rate (left) and inter-swallow interval (right). Swallow rate was significantly slower for aged C57 mice compared to SOD1 mice and controls. Inter-swallow interval was significantly longer for aged C57 mice compared to SOD1 mice and controls. Lines at the top of the bars indicate statistically

significant differences ($p < 0.05$) between groups, identified using Bonferroni pairwise comparisons. Error bars represent ± 1 SEM.

Table 1. Chocolate-Flavored Test Solution Preferred by C57 and C57/SJL Mouse Strains.

Table 2. Swallow Parameters Quantifiable During Murine VFSS.

Table 3. Swallow Parameters Quantifiable Using High Versus Low Energy Fluoroscopy Systems.

DISCUSSION:

Hundreds of murine (mouse and rat) models are commercially available to study human diseases. However, only three murine disease models have been specifically investigated relative to dysphagia: a mouse model of ALS^{13,14} and rat models of Parkinson's disease^{12,15-17} and stroke¹⁸. Each of these preliminary studies utilized different methodologies to assess dysphagia, rendering it impossible to derive meaningful comparisons between species and diseases. This major limitation may be overcome in future studies by utilizing the newly developed murine VFSS protocol that permits objective quantification of numerous swallow parameters in self-feeding animals.

Successful VFSS outcomes are dependent upon three critical components: 1) test chambers that permit self-feeding while standing unrestrained in a confined space, 2) recipes that mask the aversive taste/odor of commercially-available oral contrast agents, and 3) a step-by-step test protocol that permits quantification of swallow physiology. The combined effect produces a comfortable, low stress, self-feeding examination environment that evokes typical feeding and swallowing behaviors. Head and body movements are sufficiently self-stabilized while mice are engaged in feeding within the observation chamber, thereby permitting videofluoroscopic imaging with minimal movement artifact. Elimination of one or more of these components will have a detrimental impact on the study results. Examples of negative outcomes include inability to maintain animals in the fluoroscopy field of view, undesirable behaviors that distract from drinking, aversion to the oral contrast agent, and inability to quantify swallow parameters due to insufficient drinking episodes.

A major challenge in obtaining optimal VFSS outcomes was designing a suitable test chamber. Numerous revisions of our prototype design culminated in an observation chamber that sufficiently maintains mice in the field of view and prevents behaviors that distract from drinking. The chambers were made using milling machines to obtain uniform dimensions of the tubes and end-caps, thereby ensuring interchangeability of components for several observation chambers of the same diameter. The inner dimensions (diameter and length) were matched to be slightly larger than an adult mouse's body size, which resulted in a narrow test chamber that sufficiently permits walking in a straight line and turning around. The narrow design, in combination with strategic positioning of the spout and peg-bowl at only the end, maintains the head and

body of mice aligned along the length of the chamber while drinking. Once engaged in drinking, mice remain remarkably self-stabilized at the spout or bowl for several seconds at a time, resulting in minimal movement artifact to interfere with testing. Thus, it is possible to obtain undistorted, close-up observation/video recording and videofluoroscopic imaging of mice while drinking in the lateral and dorsal-ventral planes. Mice (and other small rodents) are naturally inclined to seek shelter in small spaces. As a result, they freely enter the observation tube (with one end already closed by an end-cap) when it is placed in the home cage, thereby eliminating stress/anxiety caused by handling (*i.e.*, manually picking up the animal to place it in the tube). Once the mouse enters the chamber, the other end is closed by attaching a 2nd end-cap. This design prevents escape while creating a low anxiety test chamber for mice to freely explore.

The square shape of the chamber provides built-in motion stability that permits it to be used in a free-standing fashion, thus eliminating the need for testing within a standard rodent cage. The entire apparatus is lightweight, portable, stackable for storage purposes, sturdy, easy to clean, and can be autoclaved. While the chambers were initially designed for use with fluoroscopy, they also are compatible with spot-film radiography, neuroimaging (*e.g.*, MRI, PET, CT), and visual observation/video recording of various behaviors.

A second major challenge to overcome was masking the aversive taste/odor of oral contrast agents (*i.e.*, barium sulfate and iohexol). Given that taste sensitivity varies widely among mouse strains¹⁹⁻²¹ and perhaps with age^{22,23}, it was necessary to identify a single test solution that was palatable to all mice, regardless of strain and age. This outcome is essential to permit direct comparisons of swallow function/dysfunction across strains and ages, while eliminating confounding results due to differences in rheological (*e.g.*, viscosity, density, etc.) and chemical properties of the test solutions. To this end, we developed a simple, rapid palatability screening approach to identify the preferred flavor enhancer to mask the aversive taste/odor of oral contrast agents during murine VFSS. Methods were modeled after the brief exposure test, which requires a lickometer (*i.e.*, lick sensor) to record lick rates during the first 2 minutes after a water regulation period (*i.e.*, withholding water for 12-16 hours overnight) to induce thirst^{24,25}. A lickometer was not available for this study; therefore, preference was assessed by behavioral observations, as well as standard video recording methods for lick rate that have been previously validated in our lab^{13,14}. Using this palatability screening approach, chocolate was identified as the preferred flavor enhancer by C57 and C57/SJL strains. Specifically, 100% of the mice in each cage readily drank chocolate-flavored solutions within 30 seconds of exposure, with multiple mice simultaneously drinking at the spout. However, the addition of barium resulted in only brief drinking bouts by most mice, regardless of barium or chocolate concentration.

An alternative to barium is iohexol, an iodine-based contrast agent that has only recently been recognized as a suitable alternative to barium sulfate for human VFSS¹⁰; thus, it has not yet been standardized for this purpose. Several different concentrations of chocolate-flavored iohexol were offered to mice. Recipes containing up to a 50% solution of stock iohexol (350 mg iodine per ml) were readily drank by most mice after

an overnight water regulation period. Higher concentrations resulted in avoidance behaviors. A 50% iohexol (350 mg iodine per ml) solution produced sufficient radiodensity while being swallowed by mice, whereas lower concentrations were markedly less visible and hindered quantification of swallow physiology. Therefore, the optimal test solution for VFSS with mice was identified as a 50% iohexol solution with chocolate flavor added. Repeat palatability testing did not result in avoidance behaviors or adverse events.

A third challenge to overcome was preventing mice from turning/tilting their head while drinking, which obscures visualization of the swallowing mechanism during VFSS. Drinking from a peg-bowl positioned just above the floor at one end of the chamber resolved this problem. There are several additional advantages of using a peg-bowl instead of a sipper tube bottle. For example, a calibrated volume of liquid can be pipetted into the peg-bowl through a ventilation hole in the end-cap of the observation tube. This approach permits quantification of the minute volume of test solution consumed during the brief VFSS test duration. Moreover, the increased surface area of the test solution in the peg-bowl, compared to a small sipper tube opening, may provide increased olfactory stimulation to further motivate drinking. Peg-bowls may be better suited for studying young or smaller strain mice, as the bowl height is a standardized distance from the floor. In contrast, sipper tube lengths must be adjusted to accommodate different sized mice, which adds another potentially confounding variable to consider. Also, mouse models of neurological diseases may have difficulty reaching a sipper tube bottle due to motor impairment of the limbs, whereas they can easily reach a peg bowl. Mice with tongue and/or jaw dysfunction may be unable to sufficiently press the ball in the spout to access the liquid; using peg-bowls can eliminate this confound. For these reasons, the use of peg-bowls over sipper tube bottles is the preferred method of murine VFSS testing. However, the observation chambers were designed to accommodate spout drinking as needed. An important caveat to consider is that lick rates are known to differ between spout and bowl drinking^{13,26}. Therefore, the choice of either spout or peg-bowl for VFSS must be consistent within and between experiments.

A fourth challenge was to identify quantifiable swallow parameters for mice that are comparable to the VFSS parameters commonly used in human research studies and clinical practice. Our preliminary findings showed the type of fluoroscopy system determines which swallow parameters can be investigated in mice. Most research centers and medical settings have high energy (~75-95 kV, ~1-5 mA) fluoroscopes designed for use with people and larger animals, which result in exceptionally poor image quality when testing mice and other small animals. As an example, a recent study using a high energy fluoroscope with rats was able to identify only 4 quantifiable swallow parameters¹², and we were able to identify only 7 swallow parameters for mice in this present study. To overcome this major limitation, we recently obtained a low energy fluoroscopy system called the LabScope (Glenbrook Technologies). The system is a miniature fluoroscope that generates a continuous cone-beam of X-rays with photon energies between 15 and 40 kV and a peak tube current of 0.2 mA (8 Watts maximum power). The lower energy levels of this system are better attenuated by the thin bone

and soft tissue of mice and thus provide higher contrast resolution than conventional (*i.e.*, high energy) fluoroscopes. The X-ray beam of the LabScope is directed at a 5 cm diameter image intensifier, which is markedly smaller than the 15-57 cm diameter image intensifier of conventional fluoroscopes. The minimum source-to-intensifier distance (SID) of the LabScope is ~6 cm (in contrast to ~30 cm for conventional fluoroscopes), which provides increased magnification capabilities. In addition, The LabScope uses patented technology that digitally magnifies the image up to 40 times in real time, without altering the SID. The result is in essence an X-ray microscope that can zoom in and out in real time to view small regions of interest, such as the swallowing mechanism of a mouse.

A major advantage of this low-energy fluoroscopy system is improved radiation safety. In addition to animals receiving lower radiation doses with The LabScope, researchers using the system are exposed to significantly less radiation scatter. The radiation exposure directly in front of the unit at the control panel is 10.3 mR/hr. At a distance 1 m in front of the unit, exposure drops to 580 μ R/hr. Most other locations in the room have very low exposure below 10 μ R/hr. Despite this improvement, we have taken extra measures to improve radiation safety. For example, leaded acrylic shielding has been added around the LabScope to block scattered X-ray photons, which enables researchers to conduct murine VFSS testing without wearing personal shielding (*e.g.*, lead aprons, thyroid shields, and glasses). In addition, the clear acrylic permits visualization of the mouse from a distance. Further radiation safety is provided by a motorized scissor lift table, which is controlled remotely by the investigator. From a distance up to 3 meters from the fluoroscope, researchers can use the remote-controlled device to adjust the vertical and horizontal position of the observation chamber within the X-ray beam. As a result, the anatomical regions of interest can be maintained within the fluoroscopy field of view while the mouse freely moves within the observation chamber. Although the scissor lift was designed for use with the LabScope, it also is compatible for use with conventional fluoroscopes to improve radiation safety for researchers. A final step to improve radiation safety during murine VFSS entails the use of a syringe delivery system for liquids. This system includes a 3-4 foot (or longer, if needed) length of PE tubing, which permits fast and efficient delivery of liquids into the peg-bowl from a distance. This syringe delivery system for liquids, in combination with the observation chambers, also can be used with conventional fluoroscopes.

Preliminary work using the LabScope, in combination with the new murine VFSS protocol, demonstrates a major advantage of over conventional systems: the number of swallow parameters that can be reliably quantified is nearly doubled. However, soft tissue structures of the swallowing mechanism (*e.g.*, tongue, velum, posterior pharyngeal wall, and epiglottis) of mice are not readily visible when using low or high energy fluoroscopy systems. Therefore, we focused on quantifying bolus flow measures rather than the biomechanics of swallowing. We were predominantly interested in parameters that could be quantified based on units of time, area, distance, volume, etc., rather than using Likert-type scale measures. Numerous bolus flow parameters meeting this requirement have been described in the human VFSS literature, such as oral transit time²⁷⁻²⁹, pharyngeal transit time²⁷⁻³³, and esophageal transit time³⁴⁻³⁶, to name but a

few. Bolus transport through the oral cavity was not readily visible in mice, likely due to the small bolus size during spontaneous drinking. However, we were able to reliably quantify pharyngeal and esophageal transit times, as well as several other measures pertaining to bolus flow and clearance. Identification of additional translational swallow parameters is expected as we optimize the capabilities of The LabScope.

Results of this study showed that mice take several rhythmic licks per swallow during spontaneous drinking, with each small liquid bolus sequentially filling the vallecular space before triggering the pharyngeal swallow. This behavior, which is typical for mammals that use licking as the primary means of ingesting liquid³⁷⁻⁴⁰, resembles the rhythmic suck-swallow pattern of human infant swallowing and all infant mammals in general. Infant swallowing physiology is characterized by several rhythmic sucks followed by a reflexive pharyngeal swallow, commonly described as the suck-swallow cycle^{37,41-43}. Thus, the rhythmic tongue and jaw movements involved in the ingestive licking behaviors of mice may be more comparable to ingestive sucking behaviors of human infants rather than cup drinking by children and adults. We have therefore been quantifying the lick rate and lick-swallow ratio of mice for future comparisons with the suck rate and suck-swallow ratio of human infants. Perhaps murine VFSS research will provide insight into developmental swallowing disorders.

As with any new research method, areas for improvement have been identified. For example, the murine VFSS protocol was developed using only C57 and C57/SJL mouse strains; it has not yet been tested with rats. The observation chambers will need to be scaled up in size (diameter and length) to accommodate the larger body size of rats. Also, it is unknown if chocolate-flavored iohexol is suitable as a universal murine VFSS test solution. Therefore, larger scale testing with multiple strains of mice and rats is warranted for this purpose. Also, the use of barium as a contrast agent for murine VFSS should not be ruled out. Mice clearly preferred the iohexol recipes over barium; however more rigorous and systematic attempts at masking the aversive taste/odor of barium may provide palatable alternatives to iohexol. Future studies comparing the effects of iohexol and barium sulfate (as well as other potential oral contrast agents) on taste preference and swallow physiology in mice and rats would undoubtedly provide important information that is directly relevant and translational to human VFSS.

VFSS with humans includes several consistencies of foods and liquid, and dysphagia is most apparent when swallowing thin liquids and dry, solid foods^{44,45}. The murine VFSS protocol is therefore being expanded to include additional consistencies that may facilitate detection and quantification of dysphagia in disease models. It also will be necessary to conduct viscosity testing of the liquid recipes for murine VFSS in order to adjust the viscosities to match those used during human VFSS. Addressing these limitations will facilitate identification of translational VFSS biomarkers of dysphagia that can be directly compared between mice, rats, and humans.

The utility of murine VFSS may be significantly improved by implanting radiopaque markers into soft tissue structures of the swallowing mechanism that are otherwise not visible, thereby permitting investigations of the biomechanics of swallowing. This

approach has been successfully used for many years to study the biomechanics of swallowing in infant pigs, using an assortment of metal clips and wires^{37,42}. We expect the use of similar, but smaller, markers in mice would permit quantification of several additional swallow parameters for comparison with larger mammals, including humans. We are currently developing methodology for implanting radiopaque markers into the tongue, soft palate, pharynx, larynx, and proximal esophagus of mice to test this hypothesis.

The video recording frame rate of The LabScope and conventional fluoroscopes is limited to 30 frames per second (fps). However, our preliminary results showed that the entire pharyngeal stage of swallowing for healthy mice occurs in less than 200 ms (i.e., <6 frames), which is 3-4 times faster than humans. Thus, the pharyngeal phase of swallowing in mice occurs so quickly that the details are not appreciable with a 30 fps camera. A higher frame rate (likely ≥ 100 fps) will be necessary to sufficiently visualize and quantify the extremely rapid and complex movements of the pharyngeal stage of swallowing in mice and other rodents. In conjunction with a higher frame rate, incorporating biplanar technology for 3D fluoroscopic imaging would certainly expand the utility murine VFSS. Therefore, future design considerations should include a higher frame rate camera and biplanar imaging capabilities.

Lastly, low-dose radiation has been shown to cause sterility in female C57 mice, resulting in altered levels of ovarian-stimulated hormones that may confound life-span studies⁴⁶. Outcomes pertaining specifically to the effects of repeated low-dose radiation exposure associated with VFSS testing have not yet been investigated in mice, other animals, or humans. However, ovarian dysfunction (not related to radiation exposure) in human females has been linked to gastrointestinal motility disorders, and specifically to dysphagia in some cases⁴⁷, which provides yet another caveat to consider when designing future VFSS studies that include females (animals and humans). Exclusion of females should be avoided, as significant gender differences in swallow function have been reported for people^{48,49} and would be important to detect and characterize in animal disease models as well. Therefore, outcomes from longitudinal VFSS studies in mice and rats of both sexes have tremendous translational potential for humans relative to dysphagia, as well as to the risks of low-dose radiation exposure associated with repeat VFSS testing.

ACKNOWLEDGMENTS:

We graciously thank additional members of the Lever Lab who contributed to data collection (Andries Ferreira, Danarae Aleman, Alexis Mok, Kaitlin Flynn, Elizabeth Bearce, Rebecca Schneider, and Matan Kadosh) and manuscript review (Andries Ferreira, Rebecca Schneider, and Kate Robbins). We also acknowledge Roderic Schlotzhauer and Edwin Honse from the MU Physics Machine Shop for their design input and fabrication of the rodent observation tubes used in this study. We are especially appreciative of Malea Jan Kunkel (Radiology Supervisor in the Veterinary Medicine and Surgery Department at the University of Missouri - College of Veterinary Medicine) and Jan Ivey (Manager of the Research Animal Cath Lab at the University of Missouri - School of Medicine) for demonstrating constant patience and motivation while

operating the high energy fluoroscopes as we developed the murine VFSS protocol. Funding sources for this study included NIH/NIDCD, NIH/NINDS, Otolaryngology – Head and Neck Surgery start-up funds, MU PRIME Fund, Mizzou Advantage, and the MU Center on Aging.

DISCLOSURES: The authors declare that they have no competing financial interests.

REFERENCES:

- 1 Shigemitsu, H. & Afshar, K. Aspiration pneumonias: under-diagnosed and under-treated. *Curr Opin Pulm Med.* **13** (3), 192-198, doi:10.1097/MCP.0b013e3280f629f000063198-200705000-00006 [pii], (2007).
- 2 Gresham, S. L. Clinical assessment and management of swallowing difficulties after stroke. *Med J Aust.* **153** (7), 397-399 (1990).
- 3 Marik, P. E. & Kaplan, D. Aspiration pneumonia and dysphagia in the elderly. *Chest.* **124** (1), 328-336 (2003).
- 4 Marik, P. E. Pulmonary aspiration syndromes. *Curr Opin Pulm Med.* **17** (3), 148-154, doi:10.1097/MCP.0b013e32834397d6, (2011).
- 5 Logemann, J. A. & Larsen, K. Oropharyngeal dysphagia: pathophysiology and diagnosis for the anniversary issue of Diseases of the Esophagus. *Dis Esophagus.* **25** (4), 299-304, doi:10.1111/j.1442-2050.2011.01210.x, (2012).
- 6 Logemann, J. A. Swallowing disorders. *Best practice & research Clinical gastroenterology.* **21** (4), 563-573, doi:10.1016/j.bpg.2007.03.006, (2007).
- 7 Martin-Harris, B. & Jones, B. The Videofluorographic Swallowing Study. *Physical Medicine and Rehabilitation Clinics of North America.* **19** (4), 769-785 (2008).
- 8 Dietsch, A. M., Solomon, N. P., Steele, C. M. & Pelletier, C. A. The effect of barium on perceptions of taste intensity and palatability. *Dysphagia.* **29** (1), 96-108, doi:10.1007/s00455-013-9487-4, (2014).
- 9 Stokely, S. L., Molfenter, S. M. & Steele, C. M. Effects of barium concentration on oropharyngeal swallow timing measures. *Dysphagia.* **29** (1), 78-82, doi:10.1007/s00455-013-9485-6, (2014).
- 10 Harris, J. A. *et al.* The Use of Low-Osmolar Water-Soluble Contrast in Videofluoroscopic Swallowing Exams. *Dysphagia.* doi:10.1007/s00455-013-9462-0, (2013).
- 11 Hillel, A. & Miller, R. Bulbar Amyotrophic Lateral Sclerosis: Patterns of Progression and Clinical Management. *Head & Neck.* **11** 51-59 (1989).
- 12 Russell, J. A., Ciucci, M. R., Hammer, M. J. & Connor, N. P. Videofluorographic assessment of deglutitive behaviors in a rat model of aging and Parkinson disease. *Dysphagia.* **28** (1), 95-104, doi:10.1007/s00455-012-9417-x, (2013).
- 13 Lever, T. E. *et al.* An animal model of oral dysphagia in amyotrophic lateral sclerosis. *Dysphagia.* **24** (2), 180-195, doi:10.1007/s00455-008-9190-z, (2009).
- 14 Lever, T. E. *et al.* A mouse model of pharyngeal dysphagia in amyotrophic lateral sclerosis. *Dysphagia.* **25** (2), 112-126, doi:10.1007/s00455-009-9232-1, (2010).
- 15 Ciucci, M. R. *et al.* Tongue force and timing deficits in a rat model of Parkinson disease. *Behavioural Brain Research.* **222** (2), 315-320 (2011).

- 16 Ciucci, M. R., Schaser, A. J. & Russell, J. A. Exercise-induced rescue of tongue function without striatal dopamine sparing in a rat neurotoxin model of Parkinson disease. *Behavioural Brain Research*. **252** 239-245 (2013).
- 17 Plowman, E. K. & Kleim, J. A. Behavioral and neurophysiological correlates of striatal dopamine depletion: A rodent model of Parkinson's disease. *Journal of Communication Disorders*. **44** (5), 549-556 (2011).
- 18 Sugiyama, N. *et al.* A novel animal model of dysphagia following stroke. *Dysphagia*. **29** (1), 61-67, doi:10.1007/s00455-013-9481-x, (2014).
- 19 Bachmanov, A. A., Reed, D. R., Li, X. & Beauchamp, G. K. Genetics of sweet taste preferences. *Pure Appl Chem*. **74** (7), 1135-1140 (2002).
- 20 Ishiwatari, Y. & Bachmanov, A. A. NaCl taste thresholds in 13 inbred mouse strains. *Chem Senses*. **37** (6), 497-508, doi:10.1093/chemse/bjr135, (2012).
- 21 Pinhas, A. *et al.* Strain differences in sucrose- and fructose-conditioned flavor preferences in mice. *Physiol Behav*. **105** (2), 451-459, doi:10.1016/j.physbeh.2011.09.010, (2012).
- 22 Midkiff, E. E. & Bernstein, I. L. The influence of age and experience on salt preference of the rat. *Dev Psychobiol*. **16** (5), 385-394, doi:10.1002/dev.420160504, (1983).
- 23 Niimi, K. & Takahashi, E. Differences in saccharin preference and genetic alterations of the Tas1r3 gene among senescence-accelerated mouse strains and their parental AKR/J strain. *Physiol Behav*. doi:10.1016/j.physbeh.2014.04.005, (2014).
- 24 Weijnen, J. A. Licking behavior in the rat: measurement and situational control of licking frequency. *Neurosci Biobehav Rev*. **22** (6), 751-760, doi:S0149763498000037 [pii], (1998).
- 25 Weijnen, J. A. Lick sensors as tools in behavioral and neuroscience research. *Physiol Behav*. **46** (6), 923-928 (1989).
- 26 Kobayashi, M. *et al.* Electrophysiological analysis of rhythmic jaw movements in the freely moving mouse. *Physiol Behav*. **75** (3), 377-385 (2002).
- 27 Dantas, R. *et al.* Effect of swallowed bolus variables on oral and pharyngeal phases of swallowing. **258** G675-681 (1990).
- 28 Johnsson, F., Shaw, D., Gabb, M., Dent, J. & Cook, I. Influence of gravity and body position on normal oropharyngeal swallowing. *American Journal of Physiology*. **35** (5), G653-G658 (1995).
- 29 Han, T. T., Paik, N.-J. & Park, J. W. Quantifying swallowing function after stroke: A functional dysphagia scale based on videofluoroscopic studies. *Archives of Physical Medicine and Rehabilitation*. **82** (5), 677-682 (2001).
- 30 Molfenter, S. M. & Steele, C. M. Kinematic and temporal factors associated with penetration-aspiration in swallowing liquids. *Dysphagia*. **29** (2), 269-276 (2014).
- 31 Kendall, K. A., McKenzie, S., Leonard, R. J., Goncalves, M. I. & Walker, A. Timing of events in normal swallowing: A videofluoroscopic study. *Dysphagia*. **15** 74-83 (2000).
- 32 Choi, K. H., Ryu, J. S., Kim, M. Y., Kang, J. Y. & Yoo, S. D. Kinematic analysis of dysphagia: Significant parameters of aspiration related to bolus viscosity. *Dysphagia*. **26** 392-398 (2011).

- 33 Molfenter, S. M. & Steele, C. M. Variation in temporal measures of swallowing: Sex and volume effects. *Dysphagia*. **28** 226-233 (2013).
- 34 Alves, L. M. T., Secaf, M. & Dantas, R. Effect of a bitter bolus on oral, pharyngeal, and esophageal transit of healthy subjects. *Arquivos de gastroenterologia*. **50** (1), 31-34 (2013).
- 35 Dalmazo, J., Aprile, L. R. O. & Dantas, R. O. Esophageal contractions, bolus transit and perception of transit after swallows of liquid and solid boluses in normal subjects. *Arquivos de gastroenterologia*. **49** (4), 250-254 (2012).
- 36 Kahrilas, P. J., Dodds, W. J. & Hogan, W. J. Effect of peristaltic dysfunction on esophageal volume clearance. *Gastroenterology*. **94** (1), 73-80 (1988).
- 37 German, R. Z., Crompton, A. W., Levitch, L. C. & Thexton, A. J. The mechanism of suckling in two species of infant mammal: Miniature pigs and long-tailed macaques. *Journal of Experimental Zoology*. **261** (3), 322-330 (1992).
- 38 Herring, S. W. & Scapino, R. P. Physiology of feeding in miniature pigs. *Journal of Morphology*. **141** (4), 427-460 (1973).
- 39 Gordon, K. R. & Herring, S. W. Activity patterns within the genioglossus during suckling in domestic dogs and pigs: Interspecific and intraspecific plasticity. *Brain, Behavior, and Evolution*. **30** (5-6), (1987).
- 40 Hiimae, K. M. & Palmer, J. B. Food transport and bolus formation during complete feeding sequences on foods of different initial consistency. *Dysphagia*. **14** (1), 31-42 (1999).
- 41 Thexton, A. J., Crompton, A. W. & German, R. Z. EMG activity in the hyoid muscles during pig suckling. *Journal of Applied Physiology*. **112** 1512-1519 (2012).
- 42 Thexton, A. J., Crompton, A. W. & German, R. Z. Transition from suckling to drinking at weaning: A kinematic and electromyographic study in miniature pigs. *Journal of Experimental Zoology*. **280** (5), 327-343 (1998).
- 43 Goldfield, E. C., Richardson, M. J., Lee, K. G. & Margetts, S. Coordination of sucking, swallowing, and breathing and oxygen saturation during early infant breast-feeding and bottle-feeding. *Pediatric Research*. **60** (4), 450-455 (2006).
- 44 D'Ottaviano, F. G., Linhares Filho, T. A., Andrade, H. M., Alves, P. C. & Rocha, M. S. Fiberoptic endoscopy evaluation of swallowing in patients with amyotrophic lateral sclerosis. *Braz J Otorhinolaryngol*. **79** (3), 349-353, doi:10.5935/1808-8694.20130061, (2013).
- 45 Inamoto, Y. *et al.* The effect of bolus viscosity on laryngeal closure in swallowing: kinematic analysis using 320-row area detector CT. *Dysphagia*. **28** (1), 33-42, doi:10.1007/s00455-012-9410-4, (2013).
- 46 Spalding, J. F., Thomas, R. G. & Tietjen, G. L. (ed Serene Rein) (Los Alamos National Laboratory, Los Alamos, N.M, 1982).
- 47 Palomba, S., Di Cello, A., Riccio, E., Manguso, F. & La Sala, G. B. Ovarian function and gastrointestinal motor activity. *Minerva Endocrinol*. **36** (4), 295-310, doi:R07111879 [pii], (2011).
- 48 Alves, L. M., Cassiani Rde, A., Santos, C. M. & Dantas, R. O. Gender effect on the clinical measurement of swallowing. *Arq Gastroenterol*. **44** (3), 227-229, doi:S0004-28032007000300009 [pii], (2007).

- 49 Logemann, J. A., Pauloski, B. R., Rademaker, A. W. & Kahrilas, P. J. Oropharyngeal swallow in younger and older women: videofluoroscopic analysis. *J Speech Lang Hear Res.* **45** (3), 434-445 (2002).

Figure 1
[Click here to download high resolution image](#)

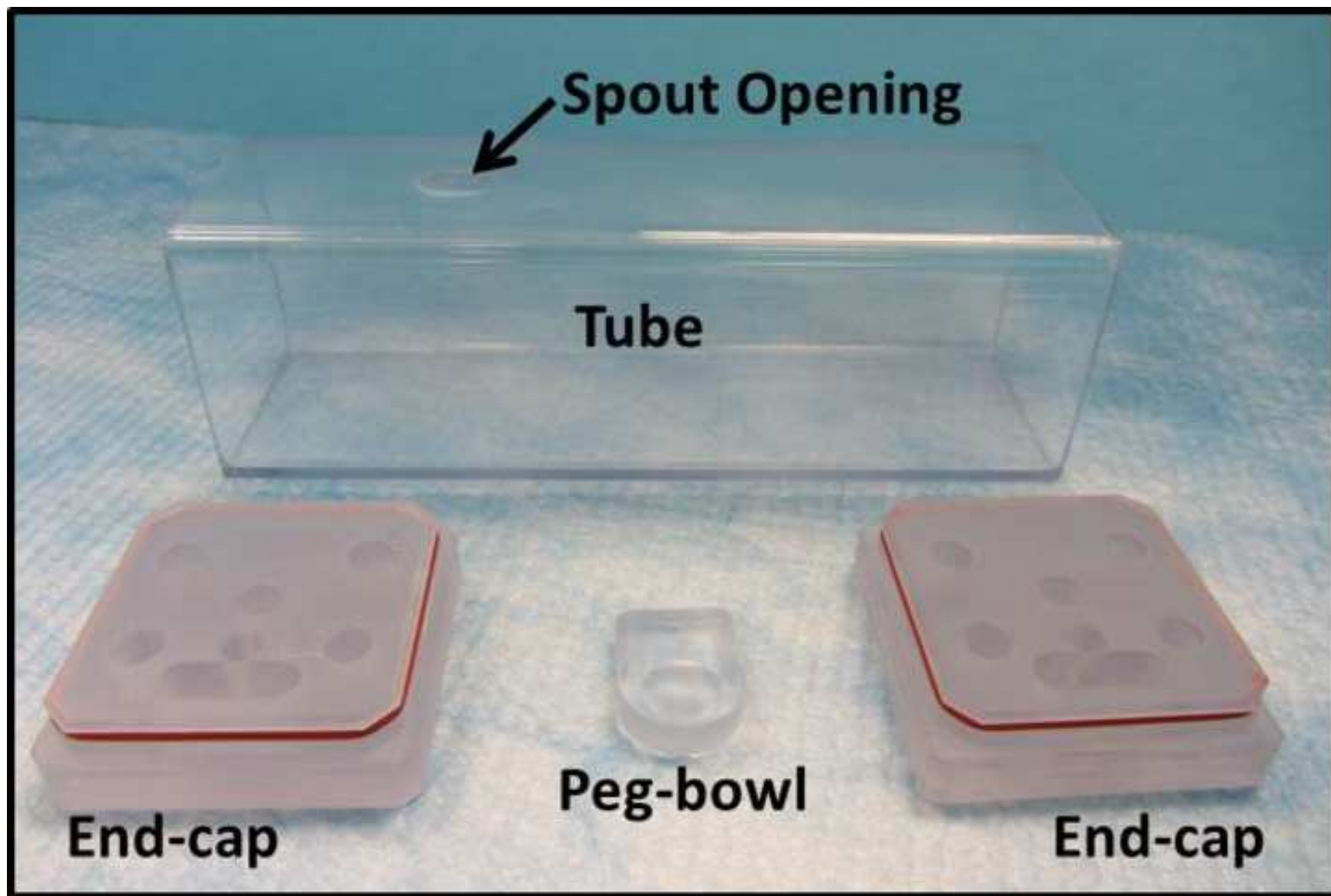


Figure 2
[Click here to download high resolution image](#)

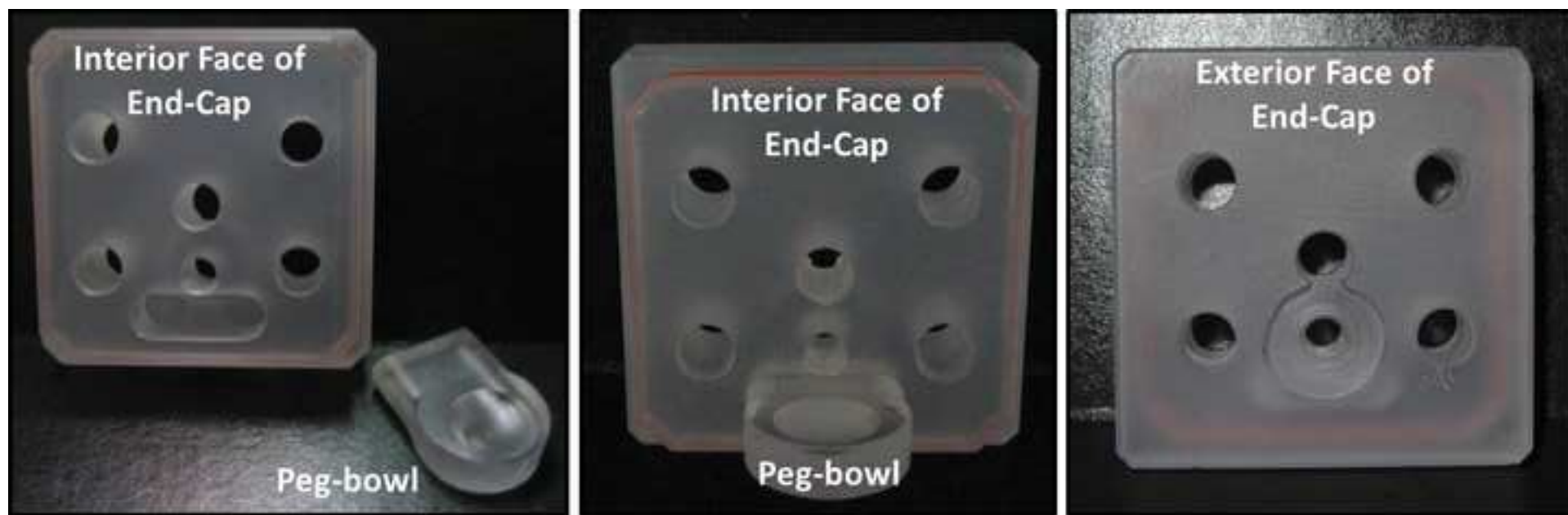


Figure 3

[Click here to download high resolution image](#)



Figure 4

[Click here to download high resolution image](#)

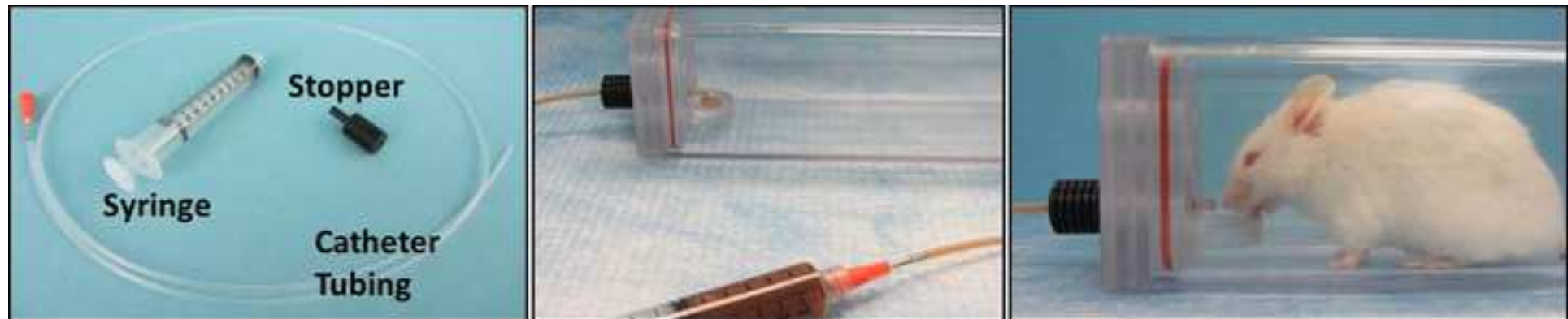


Figure 5
[Click here to download high resolution image](#)

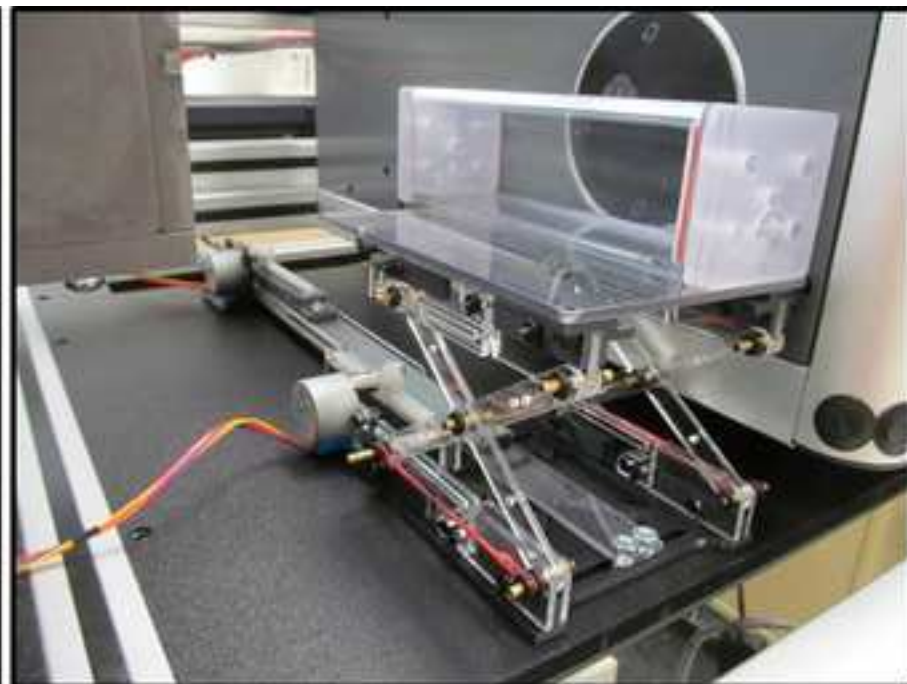
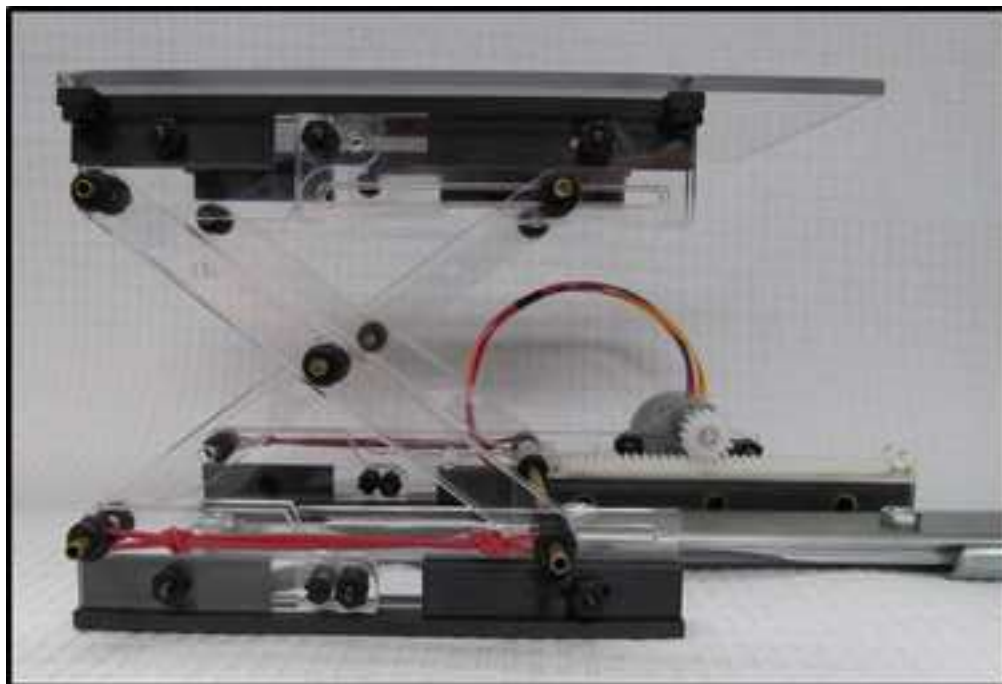


Figure 6
[Click here to download high resolution image](#)



Figure 7
[Click here to download high resolution image](#)



Figure 8
[Click here to download high resolution image](#)

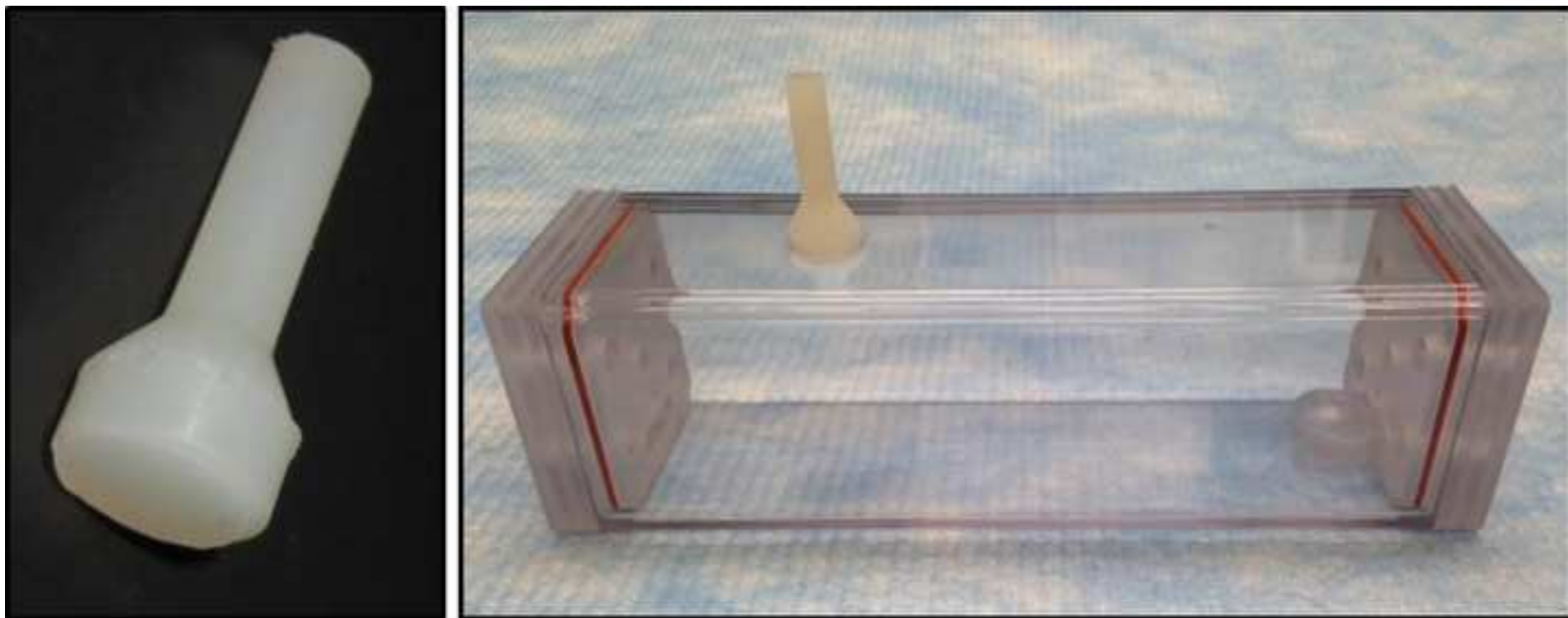


Figure 9
[Click here to download high resolution image](#)

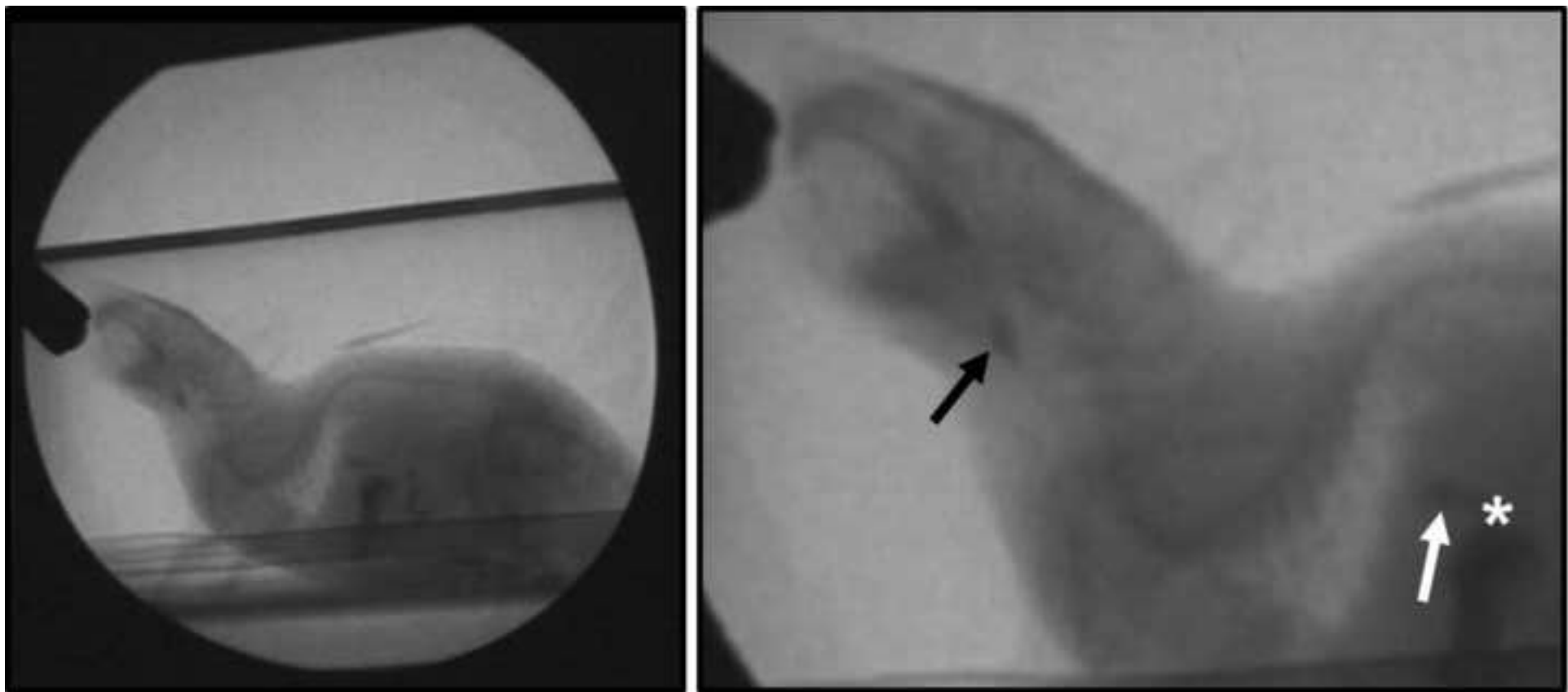


Figure 10
[Click here to download high resolution image](#)

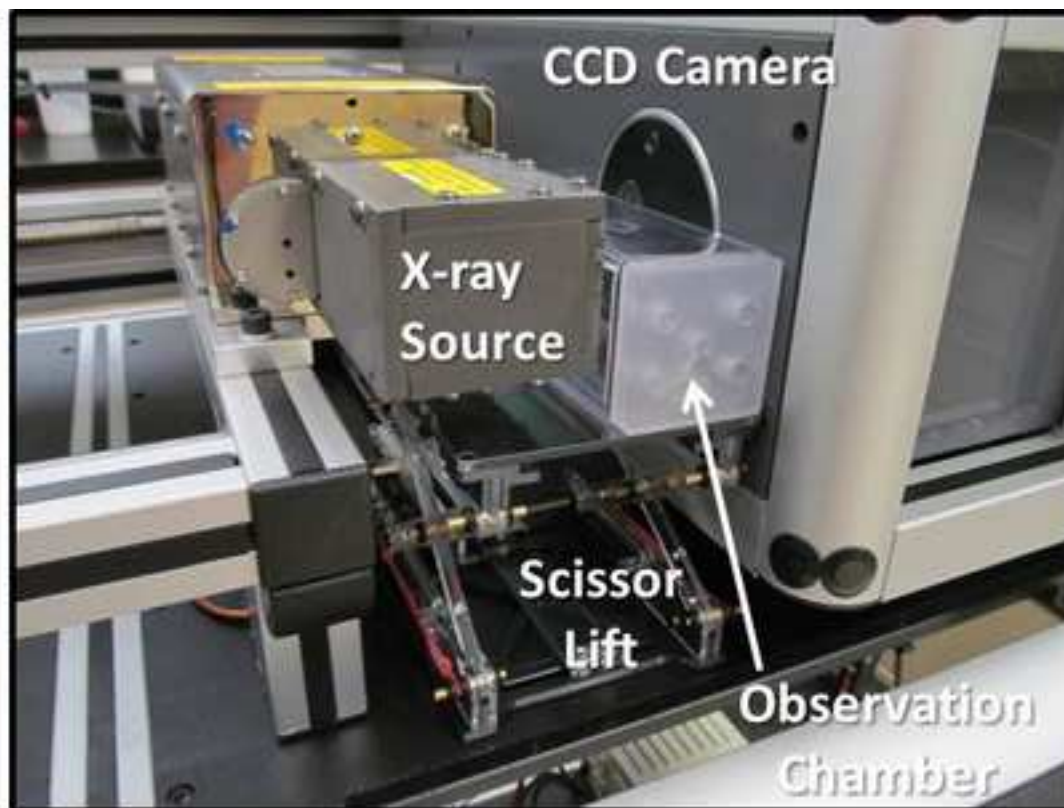
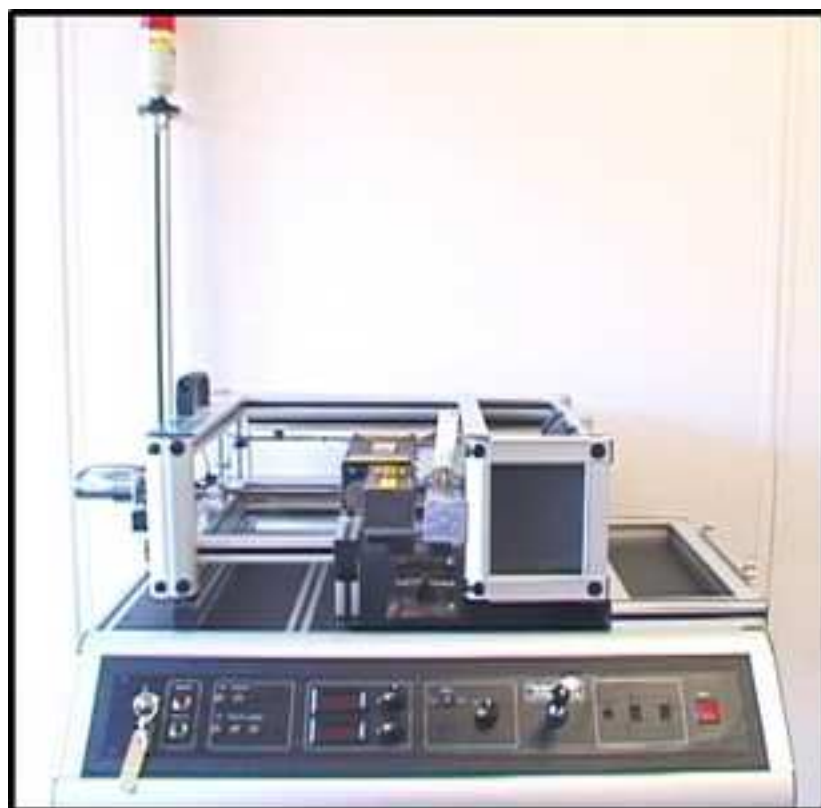


Figure 11
[Click here to download high resolution image](#)

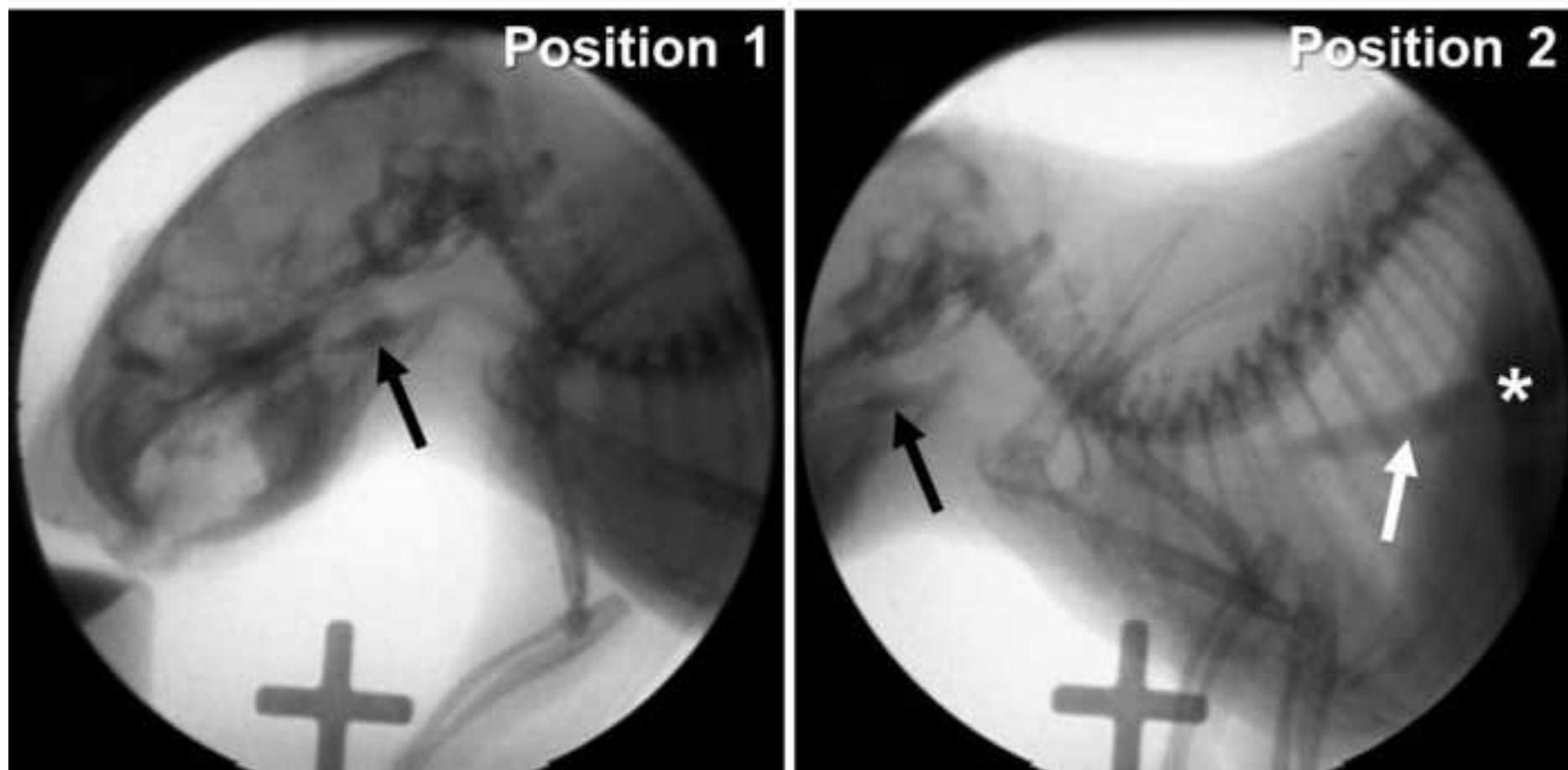


Figure 12
[Click here to download high resolution image](#)

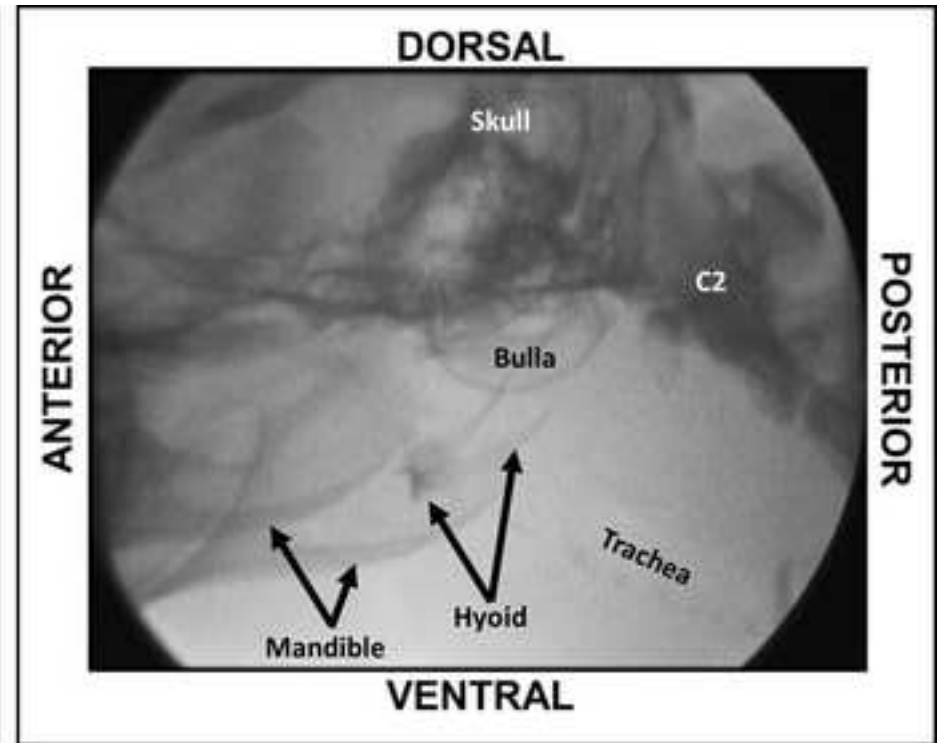
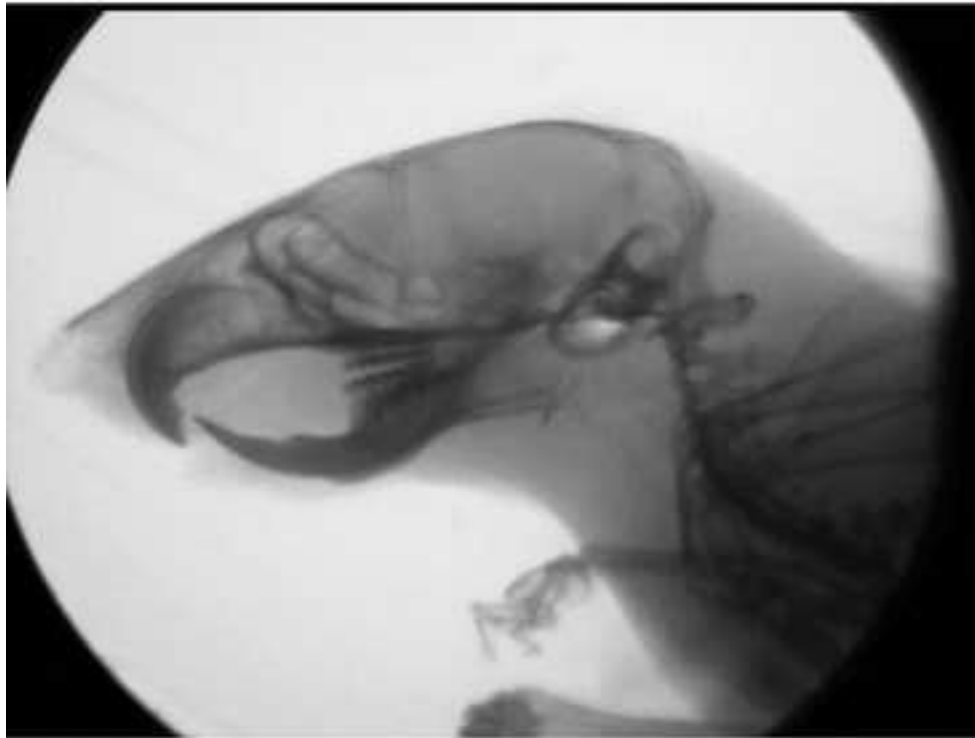
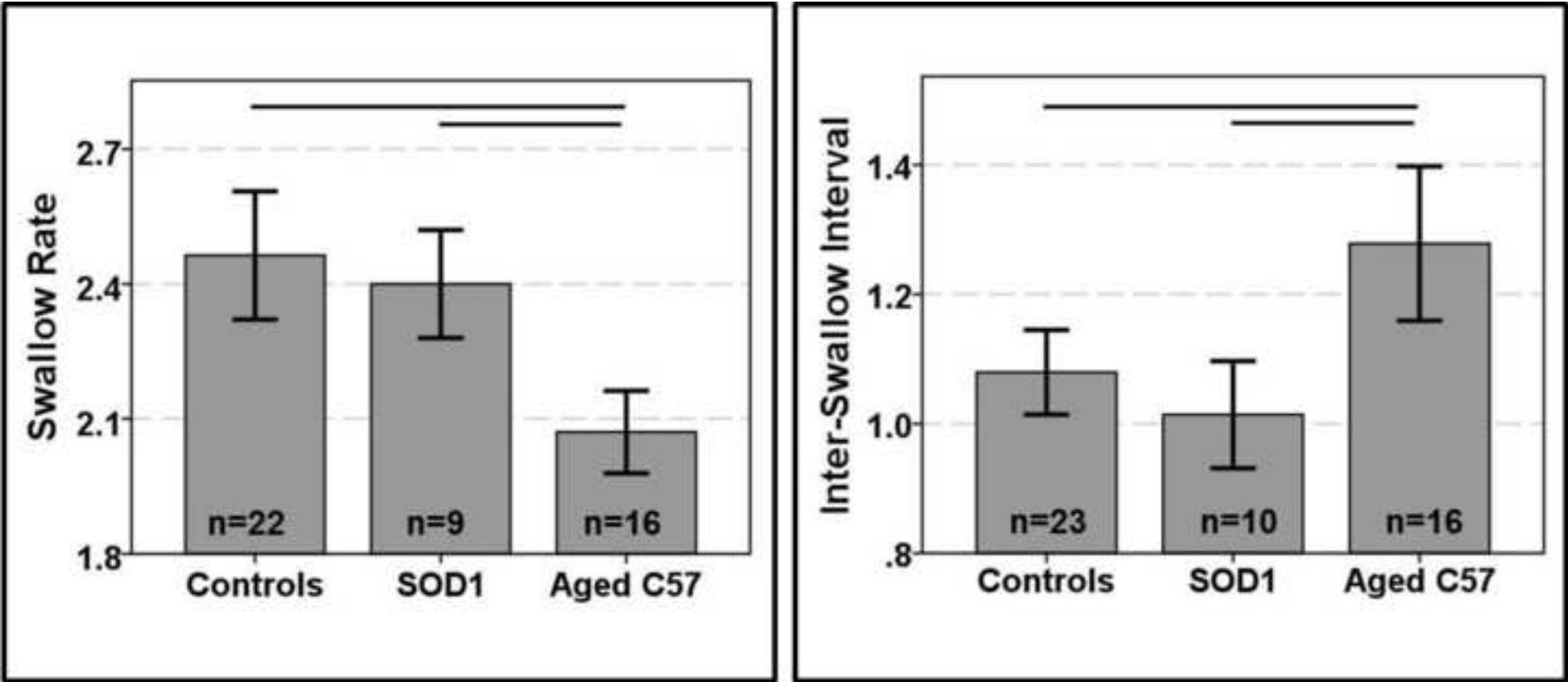


Figure 13
[Click here to download high resolution image](#)



INGREDIENTS	Chocolate Solution (for Palatability Testing)
Chocolate Syrup	3 ml
Iohexol (350 mg iodine/ml)	0 ml
Water (DI or filtered)	Adjust to 30 ml final volume (27 ml)
Final Volume	30 ml

Chocolate-Flavored Iohexol (for VFSS Testing)
3 ml
15 ml
Adjust to 30 ml final volume (12 ml)
30 ml

SWALLOW PARAMETERS
Inter-Swallow Interval (ISI)
Jaw Excursion Rate (Lick Rate Equivalent)
Jaw Excursion Distance
Lick-Swallow Ratio
Swallow Rate
Pharyngeal Transit Time (PTT)
Bolus Speed through Pharynx
Esophageal Transit Time (ETT)
Bolus Speed through Esophagus
Bolus Speed through Pharynx and Esophagus
Bolus Area
Pharyngeal Residue Area
Volume of Liquid Consumed

DESCRIPTION

The number of video frames between two successive, uninterrupted swallows. The start frame for calculating ISI is the “rest frame” that immediately precedes visible transfer of the bolus from the valleculae to the esophagus. The end frame is the “rest frame” of the next swallow. The number of frames between the two successive swallows is then divided by 30

frames per second (early to some during video capture). The tongue is not clearly visible during video capture to permit quantification of lick rate, however, jaw excursion rate is easily quantifiable. During licking, the jaw must open to permit the tongue to protrude from the mouth. Therefore, the number of jaw open/close (excursion) cycles per second (30 frames) while drinking is equivalent to lick rate. Each jaw excursion cycle begins with the jaw maximally opened (which coincides with tongue protrusion) and ends when the jaw is maximally closed. The number of jaw excursion cycles that occur during each ISI (i.e., between two successive, uninterrupted swallows) occurring during each 2-second episode of uninterrupted drinking at

the time it takes the bolus to be swallowed through the pharynx. The start frame is identical to the ISI start frame (i.e., the “rest frame” that immediately precedes visible transfer of the bolus from the valleculae). The end frame is when the tail of the bolus has completely passed the 2nd cervical vertebra (C2), which is the most obvious anatomical landmark in the cervical

pharynx. The number of frames between the PTT start and end frames is then divided by 30 frames per second (early to some during video capture). Using ImageJ software, the distance (mm) from the valleculae to the C2 vertebra is measured, scaled using a calibration marker. This distance (mm) is then divided by PTT (ms) to determine bolus

speed (mm/ms). The start frame is identical to the PTT end frame (described above). The ETT end frame is when the bolus has completely entered the stomach, which is defined as the disappearance of the bolus from the esophagus. The number of frames between the ETT start and end frames is then divided by 30 frames per second (early to some during video capture). Using ImageJ software, the distance (mm) measured is from the C2 vertebra to the gastroesophageal junction, scaled using calibration marker. This distance (mm) is then divided by ETT (ms) to

determine bolus speed (mm/ms). This parameter is used when C2 is not a readily visible anatomical landmark, hence, it is not possible to distinguish between the pharyngeal and esophageal stages of swallowing. In such cases, bolus speed through the pharynx and larynx is combined into a single swallow parameter. The start frame is identical to the PTT start frame (i.e., the “rest frame” that immediately precedes visible transfer of the bolus from the valleculae). The end frame is

identical to the ETT end frame (i.e., when the bolus has completely entered the stomach). Using ImageJ software, bolus area is measured at the vallecular “rest frame” before initiation of pharyngeal swallow, scaled using a calibration marker. Pharyngeal residue area is measured using ImageJ software, scaled using a calibration marker.

The volume of liquid consumed from a sipper tube bottle is difficult to estimate due to leakage from the spout. However, the volume of liquid consumed from a peg-bowl may be more accurately calculated as follows: 1) determine the density (i.e., ratio of weight to volume) of the calibrated volume of liquid that was administered into the peg-bowl, 2) determine the weight of the peg-bowl containing the residual liquid, 3) enter these values into a weight to

volume converter (e.g., <http://www.theochemistsite.com/conversions/weighttovolume.php>)

volume converter (e.g., <http://www.theochemistsite.com/conversions/weighttovolume.php>)

Table 3
[Click here to download Table: Table 3 - Swallow Parameters, High vs. Low Energy Systems.xlsx](#)

SWALLOW PARAMETERS	High Energy System
Inter-Swallow Interval (ISI)	X
Jaw Excursion Rate (Lick Rate Equivalent)	X
Jaw Excursion Distance	X
Lick-Swallow Ratio	X
Swallow Rate	X
Pharyngeal Transit Time (PTT)	
Bolus Speed through Pharynx	
Esophageal Transit Time (ETT)	
Bolus Speed through Esophagus	
Bolus Speed through Pharynx and Esophagus	X
Bolus Area	
Pharyngeal Residue Area	
Volume of Liquid Consumed	X

[illegible]

Name of Material/ Equipment	Company
Polycarbonate tubing for observation chambers	McMaster-Carr
Polycarbonate sheet for observation chambers	McMaster-Carr
Polycarbonate sheet for observation chambers	McMaster-Carr
Silicone O-rings for end-caps of observation chambers	McMaster-Carr
Silicone stoppers for observation chambers	McMaster-Carr
Centrifuge tubes for sipper tube bottles	Evergreen Scientific
Silicone stoppers for sipper tube bottles	Saint-Gobain Performance Plastics
Stopper borers for sipper tube bottles	Thomas Scientific
Drinking tubes for sipper tube bottles	Ancare
Iohexol for making oral contrast agent solution	GE Healthcare
Chocolate syrup for flavoring oral contrast agent	Herseys
10 ml syringe for syringe delivery system	Becton, Dickinson and Company
Catheter tubing for syringe delivery system	Becton, Dickinson and Company
Needle for syringe delivery system	Becton, Dickinson and Company
Delrin acetal resin rod for syringe delivery system	McMaster-Carr
Acrylic sheeting for scissor lift	Ponoko
3D printed ABS frame	Engineering Rapid Prototyping Facility, University of Missouri
Brass rods for scissor lift	Amazon
Drawer slide for scissor lift	Richelieu
28BYJ-48 stepper motor for scissor lift	
ULN2003 Darlington transistor array for scissor lift	Toshiba
ATTINY85 microcontroller for scissor lift	Atmel
Nylon spur gear	McMaster-Carr
Nylon spur gear rack	McMaster-Carr
4-40 nylon machine screws	McMaster-Carr
4-40 nylon hex nuts	McMaster-Carr
Buna-N O-Ring AS568A Dash No. 104	McMaster-Carr

Catalog Number	Comments/Description
3161T41	Body of observation tubes, 2"x2" diameter, 0.080" thick wall
9115K71	End-caps for observation tubes, 2"x12"x3/4"
8574K281	Peg-bowls for observation tubes
9396K108	S1138 AS568-029, pack of 25
2903K22	Package of 10 stoppers to plug the oval opening in the top of the observation chamber when using a peg-bowl
222-3530-G80	30 ml freestanding centrifuge tubes, with caps, sterile
DX263031-10	Number 31D, size: 26 mm bottom, 32 mm top, 30 mm high; 10 pack;
3276G40	Cork Borer Set that ranges from 3/16-15/16 inch
TD-100	2 1/2" long drinking tubes with 5/16" opening, straight ball-spout 350 mg iodine per ml
309604	Luer lock tip syringe without needle, 100 per box
427451	Polyethylene Tubing (Non-Sterile) (PE 240) 100'
427560	15-gauge needle, fits into PE 240 catheter tubing
8576K15	1/2 inch diameter, black Laser cut
TTRB-03-12-03	made into axles
10292G116	Attaches to base of scissor lift 2 each
ULN2003APG	Used as stepper drivers (2 each)
ATTINY85-20PU	2 each
57655K34	2 each
57655K62	2 each
95133A315	Lift assembly
94812A200	Lift assembly
9452K318	Lift assembly

Website

<http://www.mcmaster.com/#o-rings/=t0wt5r>

<http://www.mcmaster.com/#catalog/120/3803/=t0y5at>

<https://www.evergreensci.com/labware-catalog/tubes-and-vials/30-and-50-ml-centrifuge-tubes/>

<http://www.labpure.com/en/Products.asp?ID=179&PageBrand=STOPPERS>

http://www.thomassci.com/Supplies/Corks/_/CORK-BORER-SET-316-1516-IN?q=Humboldt

<http://www.ancare.com/products/watering-equipment/open-drinking-tubes/straight-tubes-ball-point>

[http://www3.gehealthcare.com/en/products/categories/contrast media/omnipaque](http://www3.gehealthcare.com/en/products/categories/contrast_media/omnipaque)

<http://www.bd.com/hypodermic/products/syringeswithoutneedles.asp>

<http://www.bd.com/ds/productCenter/427451.asp>

<http://www.bd.com/ds/productCenter/427560.asp>

<http://www.mcmaster.com/#catalog/120/3609/=t0wvaf>

<http://www.ponoko.com>

<http://www.amazon.com/Brass-Seamless-Round-Tubing-Length/dp/B000FN898M>

http://www.lowes.com/pd_380986-93052-T35072G16_0_?productId=50041754

<http://www.taydaelectronics.com/attiny85-attiny85-20pu-8-bit-20mhz-microcontroller-ic.html>

<http://www.mcmaster.com/#57655k34/=t0yaqz>

<http://www.mcmaster.com/#57655k62/=t0ybh9>

<http://www.mcmaster.com/#95133a315/=t0yd8q>

<http://www.mcmaster.com/#94812a200/=t0ye29>

<http://www.mcmaster.com/#9452k318/=t0yem7>



1 Alewife Center #200
Cambridge, MA 02140
tel. 617.945.9051
www.jove.com

ARTICLE AND VIDEO LICENSE AGREEMENT

Title of Article: Adapting Human Videofluoroscopic Swallow Study Methods to Detect and Characterize Dysphagia in Murine Disease Models

Author(s): Teresa Lever, Sabrina Braun, Ryan Brooks, Rebecca Harris, Loren Littrell, Ryan Neff, Mitchell Allen, Mollie Ulsas

Item 1 (check one box): The Author elects to have the Materials be made available (as described at <http://www.jove.com/publish>) via: ☒ Standard Access ☐ Open Access

Item 2 (check one box):

- ☐ The Author is NOT a United States government employee.
- ☒ The Author is a United States government employee and the Materials were prepared in the course of his or her duties as a United States government employee.
- ☐ The Author is a United States government employee but the Materials were NOT prepared in the course of his or her duties as a United States government employee.

ARTICLE AND VIDEO LICENSE AGREEMENT

1. Defined Terms. As used in this Article and Video License Agreement, the following terms shall have the following meanings: “**Agreement**” means this Article and Video License Agreement; “**Article**” means the article specified on the last page of this Agreement, including any associated materials such as texts, figures, tables, artwork, abstracts, or summaries contained therein; “**Author**” means the author who is a signatory to this Agreement; “**Collective Work**” means a work, such as a periodical issue, anthology or encyclopedia, in which the Materials in their entirety in unmodified form, along with a number of other contributions, constituting separate and independent works in themselves, are assembled into a collective whole; “**CRC License**” means the Creative Commons Attribution-Non Commercial-No Derivs 3.0 Unported Agreement, the terms and conditions of which can be found at: <http://creativecommons.org/licenses/by-nc-nd/3.0/legalcode>; “**Derivative Work**” means a work based upon the Materials or upon the Materials and other pre-existing works, such as a translation, musical arrangement, dramatization, fictionalization, motion picture version, sound recording, art reproduction, abridgment, condensation, or any other form in which the Materials may be recast, transformed, or adapted; “**Institution**” means the institution, listed on the last page of this Agreement, by which the Author was employed at the time of the creation of the Materials; “**JoVE**” means MyJoVE Corporation, a Massachusetts corporation and the publisher of *The Journal of Visualized Experiments*; “**Materials**” means the Article and / or the Video; “**Parties**” means the Author and JoVE; “**Video**” means any video(s) made by the Author, alone or in conjunction with any other parties, or by JoVE or its affiliates or agents, individually or in collaboration with the Author or any other parties, incorporating all or any portion of the Article, and in which the Author may or may not appear.

2. Background. The Author, who is the author of the Article, in order to ensure the dissemination and protection of the Article, desires to have the JoVE publish the Article and create and transmit videos based on the Article. In furtherance of such goals, the Parties desire to memorialize in this Agreement the respective rights of each Party in and to the Article and the Video.

3. Grant of Rights in Article. In consideration of JoVE agreeing to publish the Article, the Author hereby grants to JoVE, subject to **Sections 4** and **7** below, the exclusive, royalty-free, perpetual (for the full term of copyright in the Article, including any extensions thereto) license (a) to publish, reproduce, distribute, display and store the Article in all forms, formats and media whether now known or hereafter developed (including without limitation in print, digital and electronic form) throughout the world, (b) to translate the Article into other languages, create adaptations, summaries or extracts of the Article or other Derivative Works (including, without limitation, the Video) or Collective Works based on all or any portion of the Article and exercise all of the rights set forth in (a) above in such translations, adaptations, summaries, extracts, Derivative Works or Collective Works and (c) to license others to do any or all of the above. The foregoing rights may be exercised in all media and formats, whether now known or hereafter devised, and include the right to make such modifications as are technically necessary to exercise the rights in other media and formats. If the “Open Access” box has been checked in **Item 1** above, JoVE and the Author hereby grant to the public all such rights in the Article as provided in, but subject to all limitations and requirements set forth in, the CRC License.

ARTICLE AND VIDEO LICENSE AGREEMENT

4. Retention of Rights in Article. Notwithstanding the exclusive license granted to JoVE in **Section 3** above, the Author shall, with respect to the Article, retain the non-exclusive right to use all or part of the Article for the non-commercial purpose of giving lectures, presentations or teaching classes, and to post a copy of the Article on the Institution's website or the Author's personal website, in each case provided that a link to the Article on the JoVE website is provided and notice of JoVE's copyright in the Article is included. All non-copyright intellectual property rights in and to the Article, such as patent rights, shall remain with the Author.

5. Grant of Rights in Video – Standard Access. This **Section 5** applies if the "Standard Access" box has been checked in **Item 1** above or if no box has been checked in **Item 1** above. In consideration of JoVE agreeing to produce, display or otherwise assist with the Video, the Author hereby acknowledges and agrees that, Subject to **Section 7** below, JoVE is and shall be the sole and exclusive owner of all rights of any nature, including, without limitation, all copyrights, in and to the Video. To the extent that, by law, the Author is deemed, now or at any time in the future, to have any rights of any nature in or to the Video, the Author hereby disclaims all such rights and transfers all such rights to JoVE.

6. Grant of Rights in Video – Open Access. This **Section 6** applies only if the "Open Access" box has been checked in **Item 1** above. In consideration of JoVE agreeing to produce, display or otherwise assist with the Video, the Author hereby grants to JoVE, subject to **Section 7** below, the exclusive, royalty-free, perpetual (for the full term of copyright in the Article, including any extensions thereto) license (a) to publish, reproduce, distribute, display and store the Video in all forms, formats and media whether now known or hereafter developed (including without limitation in print, digital and electronic form) throughout the world, (b) to translate the Video into other languages, create adaptations, summaries or extracts of the Video or other Derivative Works or Collective Works based on all or any portion of the Video and exercise all of the rights set forth in (a) above in such translations, adaptations, summaries, extracts, Derivative Works or Collective Works and (c) to license others to do any or all of the above. The foregoing rights may be exercised in all media and formats, whether now known or hereafter devised, and include the right to make such modifications as are technically necessary to exercise the rights in other media and formats. For any Video to which this Section 6 is applicable, JoVE and the Author hereby grant to the public all such rights in the Video as provided in, but subject to all limitations and requirements set forth in, the CRC License.

7. Government Employees. If the Author is a United States government employee and the Article was prepared in the course of his or her duties as a United States government employee, as indicated in **Item 2** above, and any of the licenses or grants granted by the Author hereunder exceed the scope of the 17 U.S.C. 403, then the rights granted hereunder shall be limited to the maximum rights permitted under such

statute. In such case, all provisions contained herein that are not in conflict with such statute shall remain in full force and effect, and all provisions contained herein that do so conflict shall be deemed to be amended so as to provide to JoVE the maximum rights permissible within such statute.

8. Likeness, Privacy, Personality. The Author hereby grants JoVE the right to use the Author's name, voice, likeness, picture, photograph, image, biography and performance in any way, commercial or otherwise, in connection with the Materials and the sale, promotion and distribution thereof. The Author hereby waives any and all rights he or she may have, relating to his or her appearance in the Video or otherwise relating to the Materials, under all applicable privacy, likeness, personality or similar laws.

9. Author Warranties. The Author represents and warrants that the Article is original, that it has not been published, that the copyright interest is owned by the Author (or, if more than one author is listed at the beginning of this Agreement, by such authors collectively) and has not been assigned, licensed, or otherwise transferred to any other party. The Author represents and warrants that the author(s) listed at the top of this Agreement are the only authors of the Materials. If more than one author is listed at the top of this Agreement and if any such author has not entered into a separate Article and Video License Agreement with JoVE relating to the Materials, the Author represents and warrants that the Author has been authorized by each of the other such authors to execute this Agreement on his or her behalf and to bind him or her with respect to the terms of this Agreement as if each of them had been a party hereto as an Author. The Author warrants that the use, reproduction, distribution, public or private performance or display, and/or modification of all or any portion of the Materials does not and will not violate, infringe and/or misappropriate the patent, trademark, intellectual property or other rights of any third party. The Author represents and warrants that it has and will continue to comply with all government, institutional and other regulations, including, without limitation all institutional, laboratory, hospital, ethical, human and animal treatment, privacy, and all other rules, regulations, laws, procedures or guidelines, applicable to the Materials, and that all research involving human and animal subjects has been approved by the Author's relevant institutional review board.

10. JoVE Discretion. If the Author requests the assistance of JoVE in producing the Video in the Author's facility, the Author shall ensure that the presence of JoVE employees, agents or independent contractors is in accordance with the relevant regulations of the Author's institution. If more than one author is listed at the beginning of this Agreement, JoVE may, in its sole discretion, elect not take any action with respect to the Article until such time as it has received complete, executed Article and Video License Agreements from each such author. JoVE reserves the right, in its absolute and sole discretion and without giving any reason therefore, to accept or decline any work submitted to JoVE. JoVE and its employees, agents and independent contractors shall have

ARTICLE AND VIDEO LICENSE AGREEMENT

full, unfettered access to the facilities of the Author or of the Author's institution as necessary to make the Video, whether actually published or not. JoVE has sole discretion as to the method of making and publishing the Materials, including, without limitation, to all decisions regarding editing, lighting, filming, timing of publication, if any, length, quality, content and the like.

11. **Indemnification.** The Author agrees to indemnify JoVE and/or its successors and assigns from and against any and all claims, costs, and expenses, including attorney's fees, arising out of any breach of any warranty or other representations contained herein. The Author further agrees to indemnify and hold harmless JoVE from and against any and all claims, costs, and expenses, including attorney's fees, resulting from the breach by the Author of any representation or warranty contained herein or from allegations or instances of violation of intellectual property rights, damage to the Author's or the Author's institution's facilities, fraud, libel, defamation, research, equipment, experiments, property damage, personal injury, violations of institutional, laboratory, hospital, ethical, human and animal treatment, privacy or other rules, regulations, laws, procedures or guidelines, liabilities and other losses or damages related in any way to the submission of work to JoVE, making of videos by JoVE, or publication in JoVE or elsewhere by JoVE. The Author shall be responsible for, and shall hold JoVE harmless from, damages caused by lack of sterilization, lack of cleanliness or by contamination due to the making of a video by JoVE its employees, agents or independent contractors. All sterilization, cleanliness or decontamination procedures shall be solely the responsibility of the Author and shall be undertaken at the Author's

expense. All indemnifications provided herein shall include JoVE's attorney's fees and costs related to said losses or damages. Such indemnification and holding harmless shall include such losses or damages incurred by, or in connection with, acts or omissions of JoVE, its employees, agents or independent contractors.

12. **Fees.** To cover the cost incurred for publication, JoVE must receive payment before production and publication the Materials. Payment is due in 21 days of invoice. Should the Materials not be published due to an editorial or production decision, these funds will be returned to the Author. Withdrawal by the Author of any submitted Materials after final peer review approval will result in a US\$1,200 fee to cover pre-production expenses incurred by JoVE. If payment is not received by the completion of filming, production and publication of the Materials will be suspended until payment is received.

13. **Transfer, Governing Law.** This Agreement may be assigned by JoVE and shall inure to the benefits of any of JoVE's successors and assignees. This Agreement shall be governed and construed by the internal laws of the Commonwealth of Massachusetts without giving effect to any conflict of law provision thereunder. This Agreement may be executed in counterparts, each of which shall be deemed an original, but all of which together shall be deemed to be one and the same agreement. A signed copy of this Agreement delivered by facsimile, e-mail or other means of electronic transmission shall be deemed to have the same legal effect as delivery of an original signed copy of this Agreement.

A signed copy of this document must be sent with all new submissions. Only one Agreement required per submission.

CORRESPONDING AUTHOR:

Name:	Teresa E. Lever		
Department:	Otolaryngology - Head and Neck Surgery		
Institution:	University of Missouri		
Article Title:	Adapting Human Videofluoroscopic Swallow Study Methods to Detect and Characterize Dysphagia in Murine Disease Models		
Signature:	Teresa Lever	Date:	5/15/2014

Please submit a signed and dated copy of this license by one of the following three methods:

- 1) Upload a scanned copy of the document as a pdf on the JoVE submission site;
- 2) Fax the document to +1.866.381.2236;
- 3) Mail the document to JoVE / Attn: JoVE Editorial / 1 Alewife Center #200 / Cambridge, MA 02139

For questions, please email submissions@jove.com or call +1.617.945.9051

UNIVERSITY *of* MISSOURI

DEPARTMENT OF OTOLARYNGOLOGY - HEAD AND NECK SURGERY

July 27, 2014

Dear Dr. Upponi,

We appreciate the insightful comments from the editor and reviewers to improve our manuscript. All comments have been fully addressed, as described below.

Editorial comments:

•Please shorten figure legends to contain only information about the figures. The additional information should be moved to the Results section.

Figure legends were shortened to include only information/descriptions pertinent to the figures. The additional extraneous information was moved to the Results section.

•Please take this opportunity to thoroughly proofread your manuscript to ensure that there are no spelling or grammar issues. Your JoVE editor will not copy-edit your manuscript and any errors in your submitted revision may be present in the published version.

The manuscript was proofread. Spelling and grammatical errors identified were corrected.

•If your figures and tables are original and not published previously, please ignore this comment. For figures and tables that have been published before, please include phrases such as "Re-print with permission from (reference#)" or "Modified from.." etc. And please send a copy of the re-print permission for JoVE's record keeping purposes.

All figures and tables are original to this publication submission, therefore, this comment was disregarded.

Reviewers' comments:

Reviewer #1:

1. Write out IACUC (perhaps include the protocol number) and have a statement that the study was in accordance with NIH Guidelines.

IACUC was written out, the protocol number was included, and a statement was made stating the study's accordance with NIH Guidelines.



2. Use the term 'water regulation' instead of restriction.

'Restriction' was changed to 'regulation' throughout the manuscript.

Reviewer #2:

1. Second paragraph: When referring to the VFSS it would strengthen your introduction and use of this technique in animal models to highlight that this is the current "gold standard" for the evaluation of swallowing function.

A statement was made about VFSS being the gold standard for evaluating swallow function.

2. Line 146, "directly translate to clinical trials" I would remove the word DIRECTLY and replace it with "to better" translate.

Change was made from 'directly' to 'better.'

3. Would be useful if actual VFSS video files could be uploaded comparing the Low Resolution to High Resolution examples and showing measures and anatomical landmarks in freeze frame.

We plan to include two VFSS video files that we have previously recorded with the manuscript, with assistance from the JoVE video editors.

Discussion:

1. There are many other studies of swallowing in the rat PD literature that should be cited (Ciucci, Plowman).

We included citations from Drs. Ciucci and Plowman.

2. Would have liked to have an explanation of the measures that the VFSS provides and why the new measures that can be taken are useful to specific aspects of diseases or development and how they translate to human comparisons. For instance, are the new measures comparable to what is seen in the clinic? Essentially, just expand on the utility of the measures rather than just saying that they are available.

We included new paragraphs in the discussion about the translational potential of the VFSS protocol.

Reviewer #3:

1: Lines 63, 68, and 116: change "swallow" to videofluoroscopic "swallowing" study

Changes were made accordingly.

In addition, the authors elected to make the following changes to improve the clarity of the manuscript:

1. The term **energy** was substituted for **resolution** throughout the manuscript when describing the types of fluoroscopes. Rationale for this change is that both low and high energy systems can produce high resolution imaging, depending upon the size of the animal/object being tested.
2. Additional methods were included that were inadvertently omitted from previous drafts of the manuscript. Examples include the remote-controlled scissor lift table and the syringe delivery system for liquids. New figures have been added for each and the parts list has been updated.
3. Additional paragraphs were added to the Discussion section to provide details about our new small animal fluoroscope (i.e., The LabScope) and the steps we took to markedly improve radiation safety when using this new system.
4. We also added a paragraph in the Discussion describing the typical swallow behaviors of mice, which have not yet been described in the literature.
5. Additional limitations of the study and future directions were added to the Discussion section.
6. We included one author who was mistakenly omitted from the byline.
7. We included additional acknowledgments.

All of the above-mentioned changes in the manuscript are highlighted yellow. As a final revision, the numbering of protocol steps, figures, and tables has been updated throughout the manuscript. Also, the protocol steps to be filmed have been changed to red text.

Overall, we believe that this manuscript has been markedly improved by the revision process, and we are looking forward to progressing to the next step in the publication process.

Respectfully,

A handwritten signature in black ink, appearing to read 'Teresa Lever', with a stylized, cursive script.

Teresa Lever, Ph.D.

Assistant Professor
Otolaryngology-Head and Neck Surgery
University of Missouri School of Medicine
One Hospital Drive MA314
Columbia, MO 65212
(573) 228-0723