

# Journal of Visualized Experiments

## Method of isolated ex-vivo lung perfusion in a Rat Model: Lessons Learned from Developing a Rat EVLP Program --Manuscript Draft--

<b>Manuscript Number:</b>	JoVE52309R2
<b>Full Title:</b>	Method of isolated ex-vivo lung perfusion in a Rat Model: Lessons Learned from Developing a Rat EVLP Program
<b>Article Type:</b>	Methods Article - JoVE Produced Video
<b>Keywords:</b>	Lung Transplant; Ex-Vivo Lung Perfusion; Ventilation Induced Lung Injury; Tidal Volume, Positive End Expiratory Pressure
<b>Manuscript Classifications:</b>	3.8.381: Lung Diseases; 5.4.928.600.495: Lung Transplantation; 5.4.936.450.495: Lung Transplantation; 95.51.8: bioengineering (general)
<b>Corresponding Author:</b>	Samir Ghadiali, PhD The Ohio State University Columbus, OH UNITED STATES
<b>Corresponding Author Secondary Information:</b>	
<b>Corresponding Author E-Mail:</b>	samir.ghadiali@osumc.edu
<b>Corresponding Author's Institution:</b>	The Ohio State University
<b>Corresponding Author's Secondary Institution:</b>	
<b>First Author:</b>	Kevin Nelson
<b>First Author Secondary Information:</b>	
<b>Other Authors:</b>	Kevin Nelson
	Christopher Bobba
	Emre Eren
	Tyler Spata, MD
	Malak Tadres
	Sylvester Black, MD/PhD
	Bryan Whitson, MD/Phd
<b>Order of Authors Secondary Information:</b>	
<b>Abstract:</b>	<p>The number of acceptable donor lungs available for lung transplantation is severely limited due to poor quality. Ex-Vivo Lung Perfusion (EVLP) has allowed lung transplantation in humans to become more readily available by enabling the ability to assess organs and expand the donor pool. As this technology expands and improves, the ability to potentially evaluate and improve the quality of substandard lungs prior to transplant is a critical need. In order to more rigorously evaluate these approaches, a reproducible animal model needs to be established that would allow for testing of improved techniques and management of the donated lungs as well as to the lung-transplant recipient. In addition, an EVLP animal model of associated pathologies, e.g. ventilation induced lung injury (VILI), would provide a novel method to evaluate treatments for these pathologies. Here, we describe the development of a rat EVLP lung program and our refinements to this method that allow for a reproducible model for future expansion. We also describe the application of this EVLP system to model VILI in rat lungs. Our goal is to provide the research community with key information and "pearls of wisdom"/techniques that arose from trial and error and are critical to</p>

	establishing an EVLP system that is robust and reproducible.
<b>Author Comments:</b>	
<b>Additional Information:</b>	
<b>Question</b>	<b>Response</b>
If this article needs to be "in-press" by a certain date to satisfy grant requirements, please indicate the date below and explain in your cover letter.	
If this article needs to be filmed by a certain date to due to author/equipment/lab availability, please indicate the date below and explain in your cover letter.	



**Samir N. Ghadiali, Ph.D.**  
Associate Professor, Director of Graduate Studies

Department of Biomedical Engineering  
Bevis Hall, Room 270  
1080 Carmack Road  
The Ohio State University  
Columbus, OH 43210  
ghadiali.1@osu.edu  
614-292-7742

May 9, 2014

Dear Editor:

On behalf of our co-authors, please find our electronic manuscript submission entitled "*Method of isolated ex-vivo lung perfusion in a Rat Model: Lessons Learned from Developing a Rat EVLP Program*" for consideration in the Journal of Visualized Experiments. In this manuscript we describe our development of a rat ex-vivo lung perfusion (EVLP) model and our refinements that allow for a reproducible model for future expansion. We believe this work is ideally suited for your journal since many of the surgical and monitoring techniques needed during to successfully implement this system can be best conveyed in a visualized format. We have provided a detailed text of the methods as well as several figures of key points in this procedure but feel that the unique multimedia format provided by your journal would greatly increase the impact of this publication.

Below we describe the author contributions as requested.

Kevin Nelson:	1 <sup>st</sup> author, responsible for conducting experiments, writing the manuscript and conducting data analysis.
Emre Eren:	responsible for conducting experiments
Dr. Tyler Spata:	responsible for conducting experiments and writing the manuscript
Dr. Malak Tadres:	responsible for conducting experiments
Chris Bobba:	responsible for conducting experiments
Dr. Sylvester Black:	responsible for conducting surgical procedures related to the EVLP, writing the manuscript and conducting data analysis, manuscript review
Dr. Samir Ghadiali:	co-corresponding author, responsible for overall program development, writing the manuscript and conducting data analysis
Dr. Bryan Whitson:	co-corresponding author, responsible for overall program development, conducting surgical procedures related to the EVLP, writing the manuscript and conducting data analysis.

Below we list six suggested peer-reviewers:

1. Dr. Daniel Weiss, University of Vermont, [Daniel.weiss@med.uvm.edu](mailto:Daniel.weiss@med.uvm.edu)
2. Dr. Donald Gaver, Tulane University, [dpg@tulane.edu](mailto:dpg@tulane.edu)
3. Dr. Naomi Chesler, University of Wisconsin, [Chesler@engr.wisc.edu](mailto:Chesler@engr.wisc.edu)
4. Dr. Pablo Sanchez, University of Maryland, [psanchez@smail.umaryland.edu](mailto:psanchez@smail.umaryland.edu)
5. Dr. Edward Cantu, III, University of Pennsylvania, [edward.cantu@uphs.upenn.edu](mailto:edward.cantu@uphs.upenn.edu)
6. Dr. Peter Bitterman, University of Minnesota, [bitte001@umn.edu](mailto:bitte001@umn.edu)

This manuscript provides the granular detail needed to successfully utilize this small animal model and would be of considerable interest to your readership. This manuscript is not under consideration elsewhere. None of the contents of the manuscript have been previously published. All of the authors have reviewed the manuscript and there are no conflicts of interest.

Please do not hesitate to contact me with any questions or concerns that may arise. Thank you for your consideration.

Sincerely,

Dr. Samir N. Ghadiali, PhD  
Associate Professor, Director of Graduate Studies  
Department of Biomedical Engineering  
The Ohio State University

Associate Professor (Joint Appointment)  
Department of Internal Medicine  
Dorothy M. Davis Heart & Lung Research Institute  
Ohio State University Medical Center

## **Method of isolated ex-vivo lung perfusion in a Rat Model: Lessons Learned from Developing a Rat EVLP Program**

Kevin Nelson<sup>1,2</sup>, Christopher Bobba<sup>1,2</sup>, Emre Eren<sup>3</sup>, Tyler Spata, MD<sup>4</sup>, Malak Tadres<sup>2</sup>, Sylvester M. Black, MD, PhD<sup>3,5</sup>, Samir Ghadiali, PhD<sup>1,2,3</sup> and Bryan A. Whitson, MD, PhD<sup>2,3,4</sup>

Department of Biomedical Engineering<sup>1</sup>  
Davis Heart & Lung Research Institute<sup>2</sup>

Department of Surgery, Divisions of Cardiac Surgery<sup>4</sup> and Transplantation<sup>5</sup>  
The Collaboration for Organ Perfusion, Protection, Engineering and Regeneration (COPPER) Laboratory<sup>3</sup> of The Ohio State University Wexner Medical Center, Columbus, Ohio - 43210

### **Author email addresses:**

Kevin Nelson: [nelson.898@osu.edu](mailto:nelson.898@osu.edu)  
Christopher Bobba: [bobba.6@osu.edu](mailto:bobba.6@osu.edu)  
Emre Eren: [eren.7@osu.edu](mailto:eren.7@osu.edu)  
Dr. Tyler Spata: [Tyler.Spata@osumc.edu](mailto:Tyler.Spata@osumc.edu)  
Dr. Malak Tadres: [malaktadres16th@yahoo.com](mailto:malaktadres16th@yahoo.com)  
Dr. Sylvester Black: [Slyvester.Black@osumc.edu](mailto:Slyvester.Black@osumc.edu)  
Dr. Samir Ghadiali: [samir.ghadiali@osumc.edu](mailto:samir.ghadiali@osumc.edu)  
Dr. Bryan Whitson: [Bryan.Whitson@osumc.edu](mailto:Bryan.Whitson@osumc.edu)

**Corresponding Authors:** Samir N. Ghadiali, PhD  
Department of Biomedical Engineering  
The Ohio State University  
270 Bevis Hall  
1080 Carmack Rd.  
Columbus, OH 43210  
[ghadiali.1@osu.edu](mailto:ghadiali.1@osu.edu)  
Ph: (614) 292-7742  
Fx: (614) 292-7301

Bryan A. Whitson, MD, PhD  
Division of Cardiac Surgery  
The Ohio State University Wexner Medical Center  
N-813 Doan Hall  
410 W. 10<sup>th</sup> Ave.  
Columbus, OH 43210  
[bryan.whitson@osumc.edu](mailto:bryan.whitson@osumc.edu)  
Ph: (614) 366-7414  
Fx: (614) 293-2020

**KEYWORDS:**

EVLP, VILI, tidal volume, PEEP, lung transplant, positive pressure ventilation

**SHORT ABSTRACT:**

Ex-Vivo Lung Perfusion (EVLP) has allowed lung transplantation in humans to become more readily available by enabling the ability to assess organs and expand the donor pool. Here, we describe the development of a rat EVLP program and refinements that allow for a reproducible model for future expansion.

**LONG ABSTRACT:**

The number of acceptable donor lungs available for lung transplantation is severely limited due to poor quality. Ex-Vivo Lung Perfusion (EVLP) has allowed lung transplantation in humans to become more readily available by enabling the ability to assess organs and expand the donor pool. As this technology expands and improves, the ability to potentially evaluate and improve the quality of substandard lungs prior to transplant is a critical need. In order to more rigorously evaluate these approaches, a reproducible animal model needs to be established that would allow for testing of improved techniques and management of the donated lungs as well as to the lung-transplant recipient. In addition, an EVLP animal model of associated pathologies, e.g. ventilation induced lung injury (VILI), would provide a novel method to evaluate treatments for these pathologies. Here, we describe the development of a rat EVLP lung program and refinements to this method that allow for a reproducible model for future expansion. We also describe the application of this EVLP system to model VILI in rat lungs. The goal is to provide the research community with key information and “pearls of wisdom”/techniques that arose from trial and error and are critical to establishing an EVLP system that is robust and reproducible.

**INTRODUCTION*****Clinical Relevance***

There is currently a paucity of suitable lungs available for transplantation with only 19% of lungs being able to be utilized nationally leading to protracted wait-list time or patients dying awaiting transplant<sup>1</sup>. The shortage can be due to older donors, trauma, infection, multi-system organ failure and sometimes injured donor lungs upon harvest<sup>2</sup>. In addition, the lung is a frail organ outside of the thoracic cavity and standard transport and preservation techniques can lead to deterioration and non-viable lungs. Therefore, maintaining and improving lung viability ex-vivo has recently become a major focus in lung transplant medicine.

***Ex-vivo Lung Perfusion (EVLP)***

Ex-vivo lung perfusion (EVLP) has evolved to continuously perfuse organs being evaluated for transplantation and enables a period of assessment that allows for the potential of lung resuscitation or reconditioning. EVLP can prolong total out of body organ ischemic time and allow the donated organs to travel further distances<sup>3</sup>. Typically, the lungs are ventilated at 50% of total lung capacity or 20 cmH<sub>2</sub>O of peak airway pressure with a fraction of inspired oxygen (FiO<sub>2</sub>) of 30 to 50%<sup>4</sup>. Preservation solution

is perfused at 40-60ml/kg (approximately 40% of the predicted cardiac output of 100mL/kg) in humans and large animals<sup>5,6</sup>, but is perfused at around 20% of the cardiac output for rats<sup>7</sup>. The inclusion of STEEN solution has allowed human lungs to travel in room temperature environments without development of pulmonary edema<sup>9</sup>. This pioneering work has been refined by the University of Toronto Lung Transplant Program<sup>10-13</sup> and is being evaluated for improved assessment of marginal donor lungs for transplantation<sup>14,15</sup>. However, the optimal ventilation and perfusion conditions needed to regenerate marginal and/or sub-standard lungs for transplantation is not known and is currently an active area of research.

Isolated lung perfusion systems have been used in small animals to cause lung injury, re-create respiratory diseases, and perfuse the lungs with different solutions to prevent ischemic damage. Investigators have created a small-animal model of lung transplantation by using the isolated lung-perfusion system to mimic the EVLP protocols that could be used in humans and larger animals<sup>16-18</sup>. However, this experimental model has many challenges with regards to the various techniques and parameters used to mimic human physiology. In particular, there are many subtleties in maintaining lung viability during EVLP. These subtleties can arise due to differences in harvesting technique, positive pressure ventilation settings, perfusate composition and flow conditions and cannulation of the lung. Therefore, the goal here is to provide the research community with a number of troubleshooting and implementation tips that we have found lead to a robust method for implementing EVLP in a rodent model

## PROTOCOL

All procedures were performed according to the guide-lines of the Institutional Animal Care and the National Research Council's Guide for the Humane Care and Use of Laboratory Animals (IACUC) and has undergone approval by The Ohio State University IACUC committee.

### 1. *Initial Setup*

1.1) Set up the EVLP circuit and have warm (37°C) perfusate circulating through the system prior to incorporating the ex-planted lung (Figure).

1.2) Set the warm water bath, used to jacket the perfusate reservoir, heat exchanger, and artificial thorax, to 37°C and circulating (Figure 1).

1.3) Run a de-oxygenation solution (e.g., 6% O<sub>2</sub>, 8% CO<sub>2</sub>, 84% N<sub>2</sub>) counter currently through the perfusate in the gas filter to ensure the perfusate has ~6% dissolved oxygen for the experiment. Note: This de-oxygenated perfusate enables the assessment of the lung function by measuring the oxygen introduced into the perfusate, post-organ.

1.4) Open the data acquisition program and connect the pulmonary artery pressure transducer, tracheal differential pressure transducer, respiratory flow differential pressure transducer, lung weight transducer, and pump speed

transducer to the EVLP circuit and the data-acquisition / analog-to-digital converter box (Figure).

1.5) Set up the operating table and operating tools at the EVLP circuit (Figure).

1.6) Set up a small container of liquid nitrogen near the EVLP circuit if samples will be obtained. Note: The author's system has been modified to collect pre-organ and post-organ perfusate without interrupting the pressure-flow dynamics that may potentially injure the lung.

## 2. *Preparation of Anesthetics and Heparin, Anesthetization of Rat*

2.1) Put on the following personal protective equipment (PPE) before handling rats and rat tissue: surgical mask, surgical gloves, and disposable gown.

2.2) Weigh the rat and record the weight.

2.3) Prepare 1200 U/kg heparin.

2.4) Prepare both 60 mg/kg ketamine and 5 mg/kg Xylazine in the same syringe, preparing the ketamine first.

2.5) Intraperitoneally inject the mixture of ketamine and Xylazine into the rat and allow 5 minutes for the rat to become unconscious.

2.6) Confirm proper anesthetization by checking toe pinch reflex. If the rat does not withdraw its toe, it is not feeling pain.

2.7) Move rat to operating table, secure in supine position, and spray with alcohol for sterilization.

## 3. *Extraction and Initial Ventilation of the Rat Lungs*

3.1) Prepare 4-20 cm long silk sutures (3-0 or 4-0 should suffice).

3.2) Begin recording data using the data acquisition program.

3.3) Check for appropriate depth of anesthesia, enter the abdominal cavity with an incision and inject heparin into the inferior Vena cava.

3.4) Carry the incision cranially past the manubrium into the neck until the trachea is exposed. Do not rupture the thoracic cavity (Figure 4A).

3.5) Dissect posterior to the trachea in the midline and slide a silk suture behind the trachea (Figure 4B).

3.6) Raise the anterior section of the trachea and make a transverse incision between the cartilaginous rings, high on the trachea. Do not cut through the posterior membranous portion of the trachea at this point (Figure 4C)

3.7) Cannulate the trachea with the trachea cannula and secure with the silk suture (Figure 4D). Ensure that the suture ligature is secured in the notching to mitigate migration of the cannula.

3.8) Connect the trachea cannula to the ventilation circuit.

3.9) Turn on the mechanical ventilator to start mechanically ventilating the lungs. Note: Initial settings were chosen to be a tidal volume of 4 mL/kg and positive end-expiratory pressure (PEEP) of 2 cmH<sub>2</sub>O. These settings are the initial settings and depending on the experimental conditions may be adjusted once the organ is in the ex-vivo perfusion system.

3.10) Enter the thoracic cavity through the sternum/xyphoid and continue cranially towards the suprasternal notch. Take care to avoid touching the lungs. Note: As the rat lung is fragile, any inadvertent manipulation can lead to trauma and pulmonary edema (Figure 5A).

3.11) Using 2 retractors, retract the thoracic cavity to properly expose the anatomy (Figure 5A). Once again, take care to avoid touching the lungs.

3.12) Remove the thymus with slight elevation and blunt dissection.

3.13) Shift the abdominal contents to a side to expose either the inferior vena cava (IVC) or the mesenteric vein (MV).

3.14) Incise either the IVC or the MV to exsanguinate the rat, providing euthanasia.

3.15) Place a silk suture behind the pulmonary artery and aorta in preparation for securing the pulmonary artery cannula (Figure 5B).

3.16) Make a 2-3 mm incision on the anterior surface of the right ventricular outflow tract and place the cannula in the incision and into the main pulmonary artery and secure with the silk suture (Figure 5C).

3.17) Transect the apex of the heart to allow access to the left ventricle and flush any clots within the pulmonary vasculature by flowing ~15mL of a low K<sup>+</sup> electrolyte solution through the pulmonary artery and out through the apex of the heart into the chest cavity (Figure 5D).



3.18) Connect the pulmonary artery (PA) cannula to the EVLP circuit. Ensure the inflow line coming from the circuit to the PA cannula is primed with perfusate to avoid any air entering the heart and lungs.

3.19) Turn on the main peristaltic pump and set it to a low (~2 mL/min) speed to allow perfusate to run through the pulmonary artery and out the left ventricle into the chest cavity. **\*\*CRITICAL STEP\*\*** Ensure the PA pressure does not spike as this is a sign of either a blockage or poor cannulation (Figure 6).

3.20) Turn off the peristaltic pump.

3.21) Position a silk suture behind the heart, around the ventricles (Figure 7).

3.22) Begin the process of cannulating the left atrium by inserting a small pair of surgical forceps into the apex, through the mitral valve, and into the left atrium. Note: This will dilate the mitral valve and facilitate the cannulation. Aggressive dilation, or too deep dilation, can inadvertently lacerate the left atrium rendering the procurement ineffective.

3.23) Remove the forceps from the heart.

3.24) Insert the left atrium cannula into the apex through the mitral valve and into the left atrium.

3.25) Secure the left atrium cannula with the silk suture behind the heart (Figure 8). Note: This suture can be “pre tied” to facilitate cannulation.

3.26) Connect the pulmonary artery cannula to the ex-vivo lung perfusion circuit (Figure 9A). Do not connect the left atrium cannula to the EVLP circuit until the heart-lung block has been completely removed from the body.

3.27) Clamp the esophagus with a hemostat and cut below the clamp (between the clamp and diaphragm) so that the esophagus can be used to raise the cardiopulmonary structures cephalad.

3.28) Bluntly dissect the surrounding tissue and cut the descending aorta and auxiliary vessels to free the heart-lung block as it is being raised via the esophagus (Figure 9B).

3.29) Transect the trachea cephalad to the tracheal cannula to completely free the heart-lung block.

3.30) Remove the heart-lung block and place in the designated location on the EVLP circuit (Figure 9C).

3.31) Connect the left atrium cannula to the outflow line and start the main peristaltic pump (Figure 9D).

#### 4. *Ex vivo Perfusion of the Lungs*

4.1) Quickly remove the ventilation line from the top of the EVLP apparatus and attach the housing with the pressure sensors, then insert the ventilation line on top of the housing on the top of the EVLP apparatus. Note: This will allow the ventilation data to be recorded and pressure monitored.

4.2) Ensure the bubble trap is filled with an adequate amount of perfusate so that no air bubbles (i.e., air emboli) are introduced to the lungs.

4.3) Slowly change ventilation and perfusion settings to desired experimental levels during the initial 15 minutes. Additionally, during this initial ramp-up phase, increase the perfusion flow rate to the desired rate and/or pressure. Note: Programming the ventilator to produce intermittent sigh breaths, which facilitate movement of fluid out of the lung space and therefore delay the onset of edema, is recommended. These can be produced by ventilators equipped with the sigh function.

4.4) Define “Time 0” as the time when ventilation parameters are at a tidal volume of 4 mL/kg, PEEP at 2 cmH<sub>2</sub>O, and perfusion parameters are at their expected levels and remaining constant.

4.5) If necessary, take perfusate samples from the sample port, flash freeze in liquid nitrogen, and note the time of the samples.

4.6) When the experiment is complete, isolate any necessary anatomical pieces for collection and either flash freeze in liquid nitrogen or place in fixing solution for further studies.

#### **REPRESENTATIVE RESULTS:**

The real-time mechanical data collected through the data acquisition program can easily be analyzed to test any number of hypotheses. For example, Figure 10A shows the average lung weight through 60 minutes from 10 rat experiments where animals were ventilated with a low tidal volume/low PEEP of 4mL/kg and 2cmH<sub>2</sub>O. Although there is a very minor increase in lung weight throughout the experiment, this increase is not statistically significant (ANOVA,  $p=0.92$ ). Figure 10B shows the average pulmonary arterial pressure (PAP) through 60 minutes from 12 rat experiments. The lower PAP at the 0 min time point is a result of lower flow and ventilation settings used at the beginning of all experiments and the PAP remains constant after this time point with no statistically significant changes after  $t=10$  min (ANOVA on ranks,  $p = 0.89$ ). Figure 10C shows the pulmonary vascular resistance (PVR) through 60 minutes from 12 rat experiments and although there is a small decrease in PVR after  $t=20$  min, there was no statistically significant difference in PVR during this experiment (ANOVA on ranks,  $p=0.65$ ). In comparison to the PVR data shown here, Noda *et al.* has shown the PVR to increase slightly over time for 4hr. However, those authors report data in PVR starting at

1hr instead of the start of the experiment and no standard deviation values are provided<sup>7</sup>. Noda *et al.* also does not show pulmonary edema data for the 4hr experiments so no comparison can be made with the data presented here in Figure 10A. Major differences in Noda *et al.* procedure compared to what is shown in this paper include: a 1hr cold preservation in LPS solution before EVLP, rats were initially ventilated with a gas mixture including isoflurane to render them unconscious, the perfusate solution was supplemented with 50mg of methylprednisolone and 50mg of cephalosporin, total flow was defined as 20% of the calculated cardiac output, perfusate samples were taken only after the lung had been ventilated on 100% O<sub>2</sub> for 5 min prior and the experiment was run for 4 hours.

Samples taken during the experiment from the perfusate can also be analyzed for many purposes. As an example, in Figure 11 we demonstrate how high tidal volume/high PEEP ventilation can induce a pro-inflammatory response in 60 minutes. For these experiments, the perfusate from 4 rats ventilated under injurious conditions, i.e. high tidal volume of 10 mL/kg and high PEEP of 8 cm H<sub>2</sub>O, were analyzed for pro- and anti-inflammatory cytokines IL1 $\beta$ , TNF $\alpha$  and IL4 using standard ELISA techniques. As shown in Figure 11, compared to cytokine levels before ventilation (0 min), 60 minutes of injurious ventilation resulted in a statistically significant increase in IL-1 $\beta$  and TNF $\alpha$  (pro-inflammatory cytokines) and no change in IL-4 (an anti-inflammatory cytokine) concentration. Therefore, this EVLP system is able to generate lung injury profiles commonly observed during mechanical ventilation.

## FIGURE LEGENDS

Figure 1. Diagram and photograph of small animal ex-vivo lung perfusion (EVLP) circuit. Letters in the diagram match up with letters in the photograph.

Figure 2. All transducers are securely connected to the control boxes.

Figure 3. The rat operating table is securely set up adjacent to the ex vivo lung perfusion (EVLP) circuit.

Figure 4. (A) An incision is made cranially to expose the trachea. The chest cavity is not exposed. (B) A silk suture is placed behind the trachea. (C) The trachea is partially cut to prepare for cannulation. (D) The trachea cannula is placed into position and secured with a silk suture.

Figure 5. (A) The chest cavity is pulled back to allow access to the heart and lung. (B) Preparation for placing suture behind the pulmonary artery. (C) The pulmonary artery is cannulated and tied with the previously placed silk suture. (D) A low K<sup>+</sup> electrolyte solution is flushed through the pulmonary artery and out the left atrium to remove any blood clots.

Figure 6. Increasing the pulmonary arterial flow when flushing the lung may cause the pulmonary arterial pressure to increase dramatically. If cannulation was performed correctly and there is no major blockage, the pressure should decrease.

Figure 7. Silk suture is placed around the entire heart in preparation for the left atrium cannulation.

Figure 8. The left atrium cannula is secured in place with a silk suture.

Figure 9. (A) The pulmonary artery cannula is connected to the ex-vivo lung perfusion circuit. (B) The esophagus is clamped and the connective tissue is bluntly dissected to remove the heart-lung bloc. (C) The heart-lung bloc is removed from the chest cavity and placed into the ex-vivo lung perfusion circuit. (D) The left atrium is connected to the ex-vivo lung perfusion circuit.

Figure 10. (A) Lung weight of male Sprague Dawley rats through 60 minutes of ex vivo lung perfusion (n=10). (B) Pulmonary arterial pressure of male Sprague Dawley rats through 60 minutes of ex vivo lung perfusion (n=12). (C) Pulmonary vascular resistance of male Sprague Dawley rats through 60 minutes of ex vivo lung perfusion (n=12), N.S. indicates no statistically significant difference.

Figure 11. Effect of 1 hour ventilation at high tidal volumes (10mL/kg) and high PEEP (8 cm H<sub>2</sub>O) on pro- and anti- inflammatory cytokine concentrations in the perfusate. n=4, \* indicates statistically significant difference with respect to 0 hr sample (p<0.05).

Figure 12. (A) A properly ventilating and perfusing lung connected to the EVLP circuit. (B) High positive end-expiratory pressure (PEEP) causes a tear at the trachea bifurcation causing bubbles to form at the injury and fill the artificial thorax.

Figure 13. (A) Pulmonary artery cannula. This cannula is smaller than the left atrium cannula. (B) Left atrium cannula. This cannula is much larger than the pulmonary artery cannula. (C) Trachea cannula. This cannula has ribs to aid in securing the trachea with silk suture. The end that is inserted into the trachea is also slightly pointed to aid in inserting the cannula into the trachea.

Figure 14. (A) The heart apex is held by a pair of forceps as the right ventricle is about to be incised in order to cannulate the pulmonary artery. (B) Dilation of the mitral valve annulus with a pair of small blunt-ended pick-ups makes it easier to visualize the tract into the left atrium.

## **DISCUSSION:**

### **SYSTEM MONITORING**

#### **What things look like when experiment is running well:**

Once the cannulae have been placed in the circuit and the lungs are ventilating, there are multiple ways to ensure the system is working properly. There should be no leaks

of perfusate throughout the line. The pulmonary vascular resistance (PVR) should remain relatively constant (assuming a constant flow). The oxygen exchange should increase once the ventilator is working properly and expanding the lungs to recruit more alveoli for gas exchange. Figure 12A shows properly ventilated and perfused lungs connected to the EVLP circuit inside the artificial thorax.

#### **What things look like when experiment is not running well:**

There are a few common issues that have had the highest rate of occurrence during the beginning stages of an EVLP experiment. The first and easiest to remedy is a leak in the line exiting from the lung. This is noticeable by a pool of perfusate pooling under part of the circuit and the level in the reservoir continually decreasing. Check and tighten any tube connectors around the spill area and inspect the tube itself for a leak. If this leak occurs before the lung, it may also introduce bubbles into the lung. This should be remedied as quickly as possible as air bubbles in the perfusate will result in tissue damage and cause a significant increase in the PVR. There may also be a leak coming from the lung or one of the cannulae. This may be caused by either slippage of a cannula or an obstruction in the exiting line causing a pressure buildup. Inspect the position for both cannulae to ensure neither has slipped or twisted. The PA pressure should also be monitored during this process because an instantaneous increase in PA pressure is an obvious sign that an obstruction of some kind has recently occurred. Figure 12B shows a ruptured lung that ruptured due to high pressures. A leak from the lung itself may also be caused by a tear in the tissue. This issue may or may not be repairable but repositioning and retightening the cannulae is the best option in this scenario.

#### ***Key Learning Points/Opportunities:***

Trial and error development of the ex-vivo lung perfusion system has allowed us to identify several key issues that we outline here to facilitate efficient implementation of the EVLP system. First, with respect to procurement, it is important that standard anesthetic techniques are followed to properly anesthetize the animals (enough anesthetic, injection into the peritoneum or tail vein) and adherence to all IACUC policies is required. The cannulae (shown in Figure 13 A, B, and C) should be repetitively flushed in order to remove any clot and/or debris within the pulmonary vasculature. With respect to animal selection, we suggest using Sprague Dawley or Lewis rats weighing 250 - 350g. Special care should be taken when cannulating rats weighing close to 250g since the vessels will be smaller and therefore much more difficult to cannulate without injuring the vasculature. If smaller rats, or a mouse model, is to be used, smaller cannula may need to be used.

Tracheal cannulation is not typically challenging as long as the suture is secured properly by first passing a silk suture posterior to the trachea after dissecting the surrounding fascia and prior to cannulation. Follow this with an anterior incision 1-2 tracheal rings above the suture to pass the cannula. Tie square knots in between the tracheal rings in order to secure it within a groove for better security (Figure 4C). Cannulation of the pulmonary artery (PA) is more challenging compared with the

tracheal cannula. The following steps were used in this study for this procedure. First, grasp the heart apex with a pair of forceps. Pass another pair of forceps in the transverse sinus and thread a suture to secure the cannula in the proximal PA. Incise the right ventricle immediately before the right ventricular outflow tract (RVOT) (Figure 14A). After the incision into the RVOT, the cannula will be guided towards the pulmonary artery outflow tract. Having the suture in position behind the pulmonary artery/aorta before the right ventriculotomy increases efficiency (Figure 5C). The cannula should be secured into place with the suture to prevent dislodgement. A major complication can occur if the PA cannula is not in the correct anatomical orientation. The cannula may be inserted too far and only perfuse one branch or become mal-positioned with twisting of the heart-lung specimen upon removal from the chest cavity. This can easily be oriented back to the original position to preserve the proper angle of anatomical position. Finally, Left Atrial (LA) cannulation is the most challenging part of the procedure. The LA cannula needs to be placed within the left atrium. With the tissues being extremely friable, be mindful to not use significant force or twisting in order to prevent a tear within the pulmonary vein & left atrium which would then make the experiment unsalvageable. The PA cannula is best placed before the LA cannula. A left ventriculotomy with removal of the apex has been shown to disrupt the cordae tendinae and allow easier access through the mitral leaflets. Also, the ventriculotomy makes it easier to dilate and visualize the mitral valve and to feed the cannula through the mitral valve. Dilation of the mitral valve annulus with a pair of small blunt-ended pick-ups can be done in order to visualize the tract into the LA (Figure 14B). Suture should be placed behind the heart before cannulation. This can be done simply by lifting the heart up using a pair of small blunt-ended pick-ups and placing the suture underneath and across the heart. The LA is now ready to be cannulated. Feed the LA cannula through the pick-ups in order to properly visualize the placement of the cannula into the left atrium. Take special care not to dislodge the cannula back into the left ventricle. The suture should then be tightly secured along the myocardium of the left ventricle. Securing the suture to the left atrium could occlude the entire or part of the cannula.

During the procedure, it is crucial that no air remain in the inflow section of the apparatus. Any significant air can produce an air embolism increase the PVR (effectively an “air-lock”) which will result in a much lower perfusate flow for a given pressure. Various points can be used to remove air within the system. Air within the outflow section is expected and should not have any deleterious effect on the lungs. A porcine model for pulmonary hypertension has been shown to recreate the pathology from continuous small amounts of air over an 8-week period. The increased air decreases the amount of perfusion present while causing inflammation to the surrounding tissues<sup>19</sup>.

The initiation of perfusion can occur once the cannulation is complete but before the tube coming from the LA is connected to the EVLP line. Perfusate should be run through to clear out any blood clots and this perfusate can empty into the chest wall without any issues. Switching the perfusate pump to manual mode and slowly increasing the flow rate to ~2 mL/min allows for close monitoring of the PA pressure. Pressures over 20-30 cmH<sub>2</sub>O can indicate an obstruction and watching for perfusate

exiting the LA is also an indicator but this can be very hard to see. If the pressure does increase to over 20-30 cmH<sub>2</sub>O, stop the pump and recheck both cannulations. Once the pressure is constant around 10-20 cmH<sub>2</sub>O allow the perfusate to run through and into the chest cavity for 2 minutes. At this time the line from the LA can be connected to the EVLP circuit. The perfusate pump speed can be increased to 5-10 mL/min. As the fluid head progresses through the circuit, there will be an increase in the PA pressure due to the increase in height of the fluid head and therefore the static pressure. If the fluid cannot flow over the highest point in the line, it may be necessary to either apply a suction force on the opposite end of the line or attempt to lower the highest portion of the line. Once this issue is overcome, the perfusate should circulate without any issues. A few issues should be monitored with respect to the ventilator. First, twisting of bronchi/trachea and heart-lung position may occur as the lungs become more edematous and the weight increases. It is important for the cannulae to remain in a relatively close anatomical position, therefore altering either or both cannulae may be necessary. Pressure or volume controlled ventilators as well as positive or negative ventilation can be used with this EVLP system. For the rat model, we have found using positive pressure, volume controlled ventilation works well at tidal volumes between 4-10 mL/kg and at positive end-expiratory pressures (PEEP) between 2-8 cmH<sub>2</sub>O. However, a PEEP of 8 cmH<sub>2</sub>O can cause a possible rupture at the bifurcation of the trachea. After each experiment (or set of experiments if performed back-to-back), the ventilation line leading to the trachea should be cleaned of any bronchoalveolar lavage (BAL) fluid that may have travelled up the trachea. This fluid will harden if left untouched and can completely block the ventilation line.

The perfusate composition is critical to a successful EVLP experiment. A 5% dextran mixture allows for lung perfusion that is close to physiologic conditions, maintains a stable oncotic pressure to drive fluid back into the vasculature to prevent edema and prevents thrombosis within the pulmonary vessels. It is important to note that some species of rats can be allergic to dextran which might cause pulmonary edema<sup>20</sup>. The contents of the perfusate was consistent across all experimental groups in this study, therefore the dextran content should not be a confounder. The oncotic pressure is a critical variable that has the potential to improve or produce tissue edema. Commercially available perfusion solutions that are optimized for cold static storage or normothermic perfusions have been used in this system to increase lung viability times. We note that some of these solutions contain albumin and one concern is the possibility of bovine albumin triggering an inflammatory response in the rodent lung. Although optimal perfusate composition is an ongoing subject of investigation, the perfusate needs to take into account the oncotic pressure, the osmotic pressure and buffering capacity. We recommend that the solution be based upon a modified Krebs–Henseleit solution or cell culture media. The oncotic pressure should be maintained by dextran or albumin, depending on the application. The perfusion pressure and flow rate affects the organ and supra-physiologic perfusion parameters can make the organ prone to mechanical trauma.

### ***Visual Indicators during Experiment:***

There are many visual cues as well as indications from real-time data that can be used to determine if an EVLP experiment is running well. The lung will remain the same size and will deflate to the same volume after every breath. There will also be no leaking from the lung itself. The PVR, lung weight, and compliance will remain relatively constant. Oxygen production will remain constant or increase slightly.

There are many visual indicators when the lung becomes compromised during an experiment. The lung becomes edematous and grows rapidly in size and weight. The color of the lung changes (from a tan-pink to white) and pockets of liquid can be identified in the tissue. If the trachea or lung ruptures from barotrauma or over distension, there will be bubbling from the point of injury (Figure 12B). Oxygen production will decrease and the PVR and compliance will dramatically increase as well.

The potential of using an EVLP model on small animals such as rodents opens the door for future studies improving the treatment of lung transplants. However, the small animal model requires a better understanding to truly mimic a lung transplantation. This model may be used in the future to improve medical treatments and define baseline parameters for future lung transplant studies.

#### **ACKNOWLEDGEMENTS:**

The authors would like to acknowledge the assistance of Harvard Apparatus, especially Stephanie Pazniokas, MS (*Physiology Systems & Regenerative Medicine*) for their assistance in circuit assembly, modification and troubleshooting of the perfusion circuit and XVIVO Perfusion (Daniel Martinelli, CCP, CTP) for providing non-clinical use pulmonary plegia.

**DISCLOSURES:** None

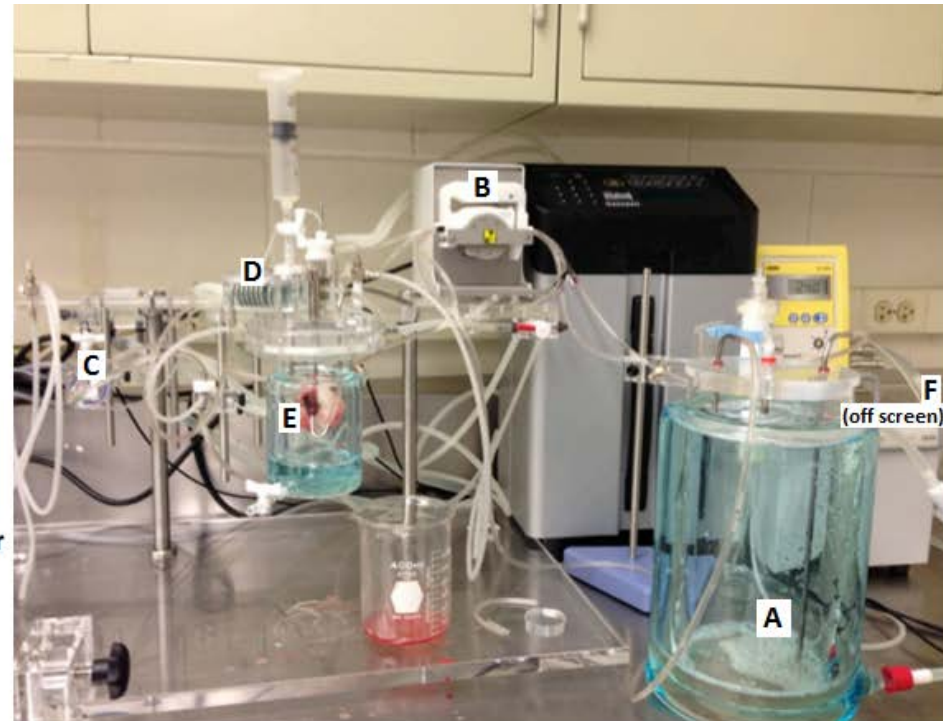
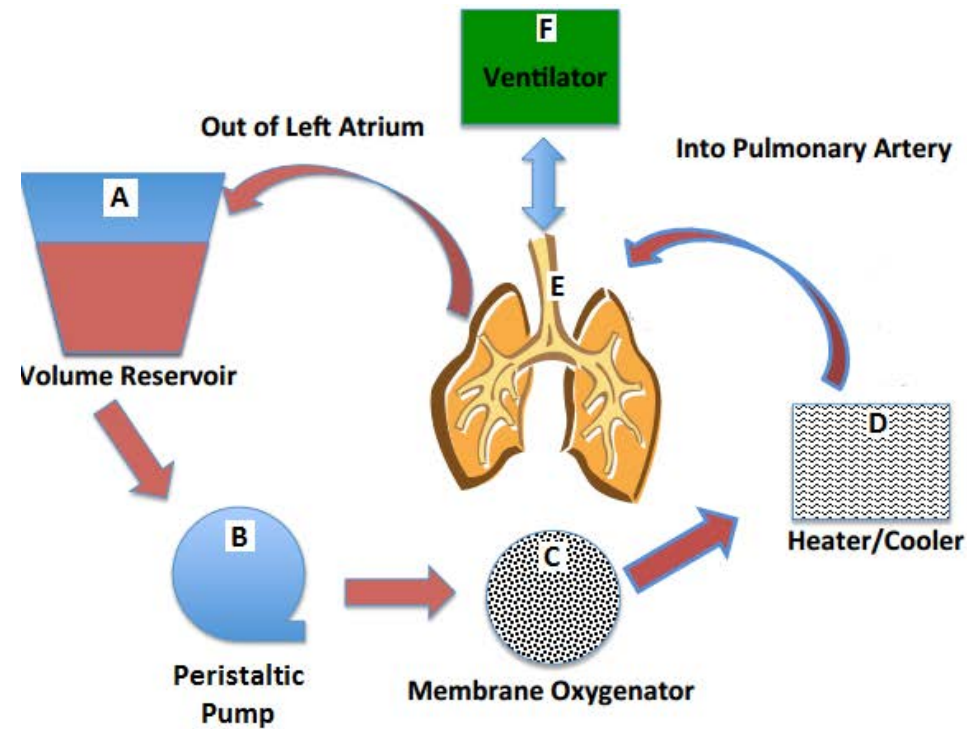


## REFERENCES

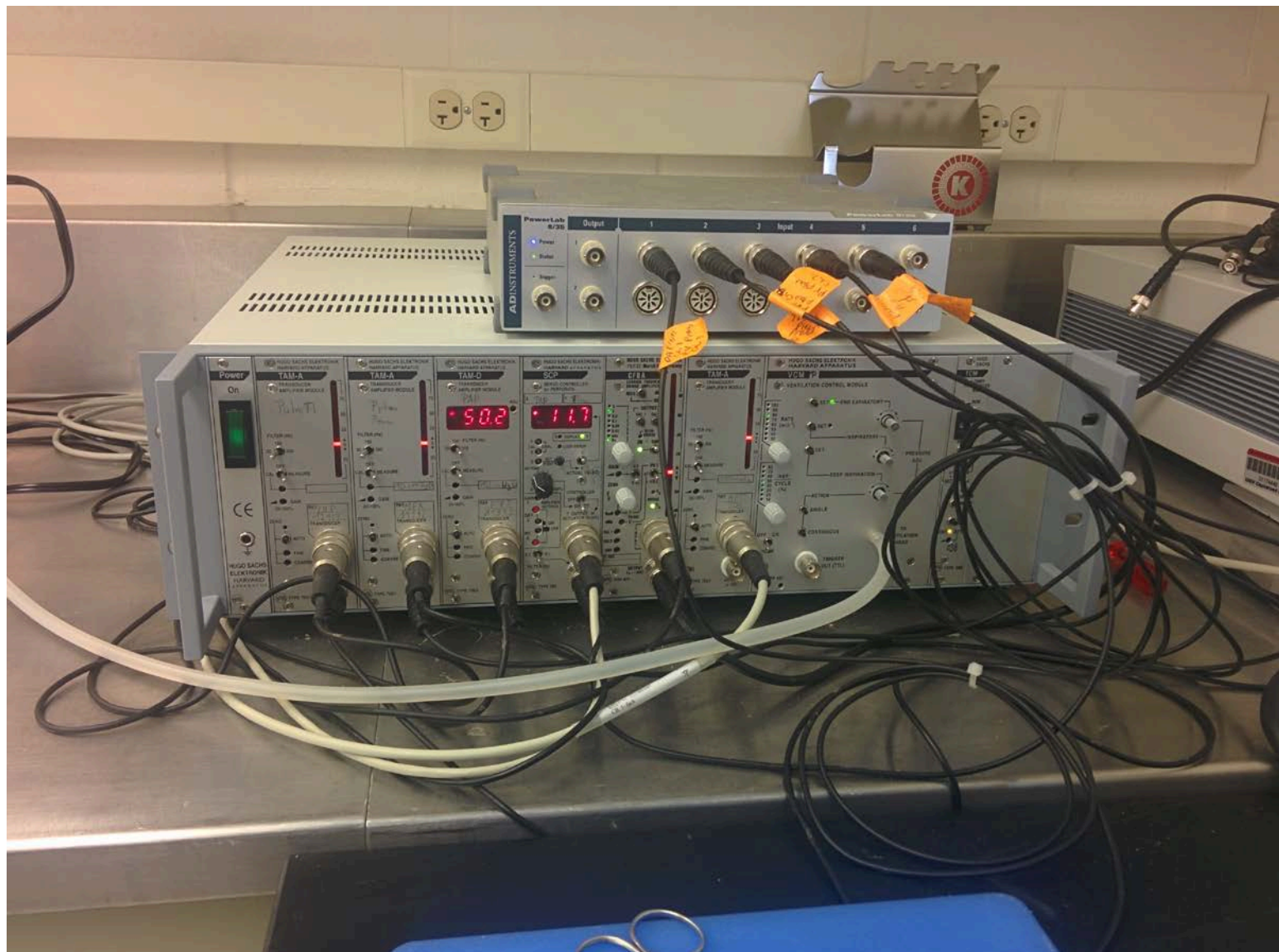
- 1 Administration, H. R. a. S. *United States Organ Transplantation, Organ Procurement and Transplantation Network & Scientific Registry for Transplant Recipients Annual Report 2011*, <[http://srtr.transplant.hrsa.gov/annual\\_reports/2011](http://srtr.transplant.hrsa.gov/annual_reports/2011)> (2011).
- 2 Maathuis, M. H., Leuvenink, H. G. & Ploeg, R. J. Perspectives in organ preservation. *Transplantation* **83**, 1289-1298, doi:10.1097/01.tp.0000265586.66475.cc (2007).
- 3 Cardoso, P. F. New perspectives in lung transplantation: from conventional preservation to ex vivo lung perfusion and lung reconditioning. *Jornal brasileiro de pneumologia : publicacao oficial da Sociedade Brasileira de Pneumologia e Tisiologia* **35**, 1057-1059 (2009).
- 4 DeCampos, K. N., Keshavjee, S., Liu, M. & Slutsky, A. S. Optimal inflation volume for hypothermic preservation of rat lungs. *The Journal of heart and lung transplantation : the official publication of the International Society for Heart Transplantation* **17**, 599-607 (1998).
- 5 de Perrot, M. *et al.* Report of the ISHLT Working Group on Primary Lung Graft Dysfunction part III: donor-related risk factors and markers. *The Journal of heart and lung transplantation : the official publication of the International Society for Heart Transplantation* **24**, 1460-1467, doi:10.1016/j.healun.2005.02.017 (2005).
- 6 Mulloy, D. P. *et al.* Ex vivo rehabilitation of non-heart-beating donor lungs in preclinical porcine model: delayed perfusion results in superior lung function. *The Journal of thoracic and cardiovascular surgery* **144**, 1208-1215, doi:10.1016/j.jtcvs.2012.07.056 (2012).
- 7 Noda, K. *et al.* Successful prolonged ex vivo lung perfusion for graft preservation in rats. *European journal of cardio-thoracic surgery : official journal of the European Association for Cardio-thoracic Surgery* **45**, e54-60, doi:10.1093/ejcts/ezt598 (2014).
- 8 de Perrot, M., Liu, M., Waddell, T. K. & Keshavjee, S. Ischemia-reperfusion-induced lung injury. *American journal of respiratory and critical care medicine* **167**, 490-511, doi:10.1164/rccm.200207-670SO (2003).
- 9 Steen, S. *et al.* Transplantation of lungs from a non-heart-beating donor. *The Lancet* **357**, 825-829, doi:10.1016/s0140-6736(00)04195-7 (2001).
- 10 de Perrot, M. *et al.* Strategies to optimize the use of currently available lung donors. *The Journal of heart and lung transplantation : the official publication of the International Society for Heart Transplantation* **23**, 1127-1134, doi:10.1016/j.healun.2003.09.010 (2004).
- 11 Cypel, M. *et al.* Technique for prolonged normothermic ex vivo lung perfusion. *The Journal of heart and lung transplantation : the official publication of the International Society for Heart Transplantation* **27**, 1319-1325, doi:10.1016/j.healun.2008.09.003 (2008).
- 12 Cypel, M. *et al.* Normothermic ex vivo perfusion prevents lung injury compared to extended cold preservation for transplantation. *American journal of transplantation : official journal of the American Society of Transplantation and the American Society of Transplant Surgeons* **9**, 2262-2269, doi:10.1111/j.1600-6143.2009.02775.x (2009).

- 13 Cypel, M. *et al.* Normothermic ex vivo lung perfusion in clinical lung transplantation. *The New England journal of medicine* **364**, 1431-1440, doi:10.1056/NEJMoa1014597 (2011).
- 14 Cypel, M. *et al.* Normothermic Human Ex Vivo Lung Perfusion (EVLP) for Improved Assessment of Extended Criteria Donor Lungs for Transplantation. *The Journal of Heart and Lung Transplantation* **28**, S126-S126 (2009).
- 15 Sanchez, P. G. *et al.* Normothermic Ex Vivo Lung Perfusion as an Assessment of Marginal Donor Lungs - The NOVEL Lung Trial. *J Heart Lung Transpl* **32**, S16-S17 (2013).
- 16 Pego-Fernandes, P. M. *et al.* Experimental model of isolated lung perfusion in rats: first Brazilian experience using the IL-2 isolated perfused rat or guinea pig lung system. *Transplantation proceedings* **42**, 444-447, doi:10.1016/j.transproceed.2010.01.016 (2010).
- 17 Pego-Fernandes, P. M. *et al.* Experimental model of isolated lung perfusion in rats: technique and application in lung preservation studies. *Jornal brasileiro de pneumologia : publicacao oficial da Sociedade Brasileira de Pneumologia e Tisilogia* **36**, 490-493 (2010).
- 18 Niemeier, R. W. The isolated perfused lung. *Environmental health perspectives* **56**, 35-41 (1984).
- 19 Zhou, X. *et al.* A pulmonary hypertension model induced by continuous pulmonary air embolization. *The Journal of surgical research* **170**, e11-16, doi:10.1016/j.jss.2011.04.030 (2011).
- 20 Harris, J. M. Differences in responses between rat strains and colonies. *Food and cosmetics toxicology* **3**, 199-202 (1965).

# Figure 1

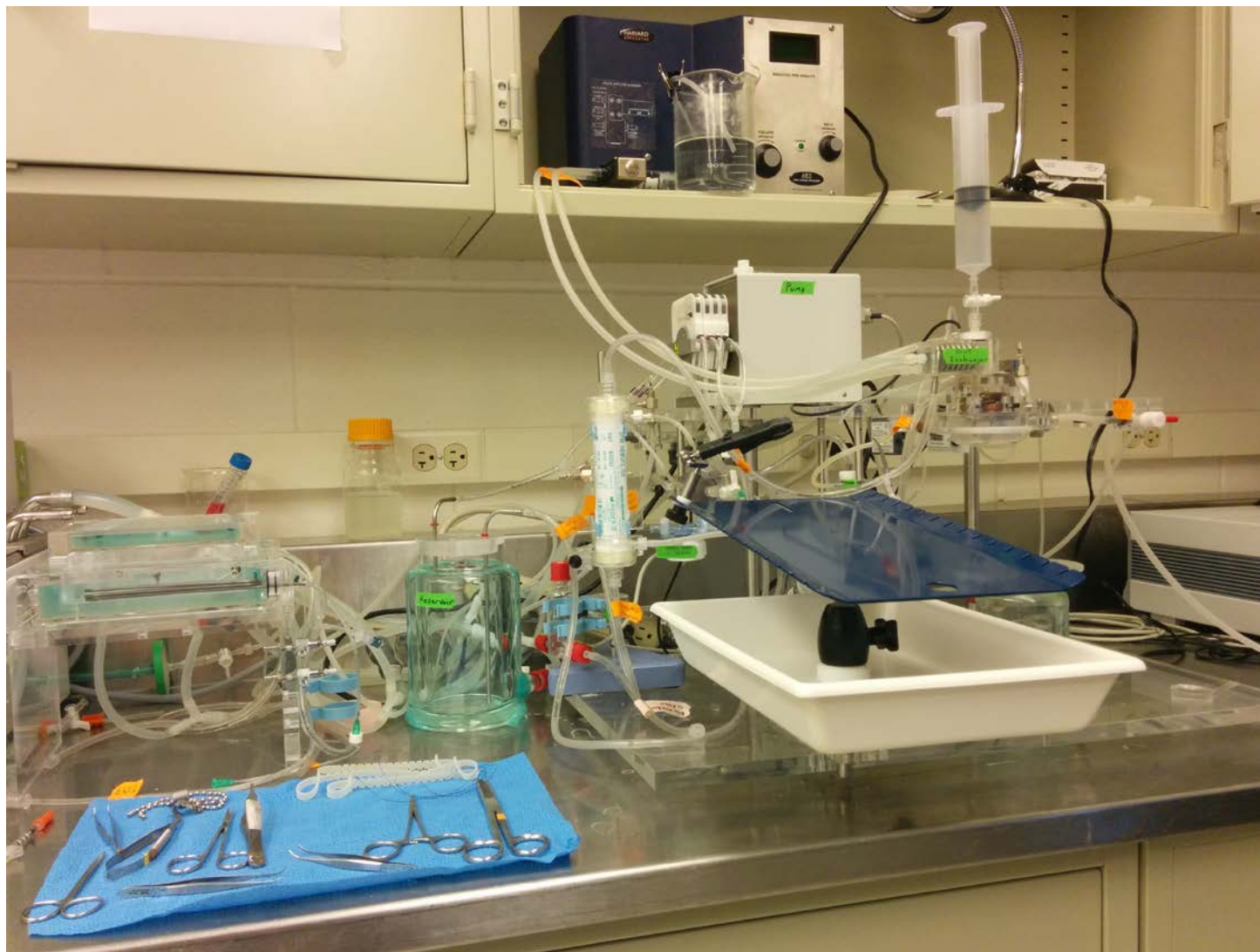


# Figure 2

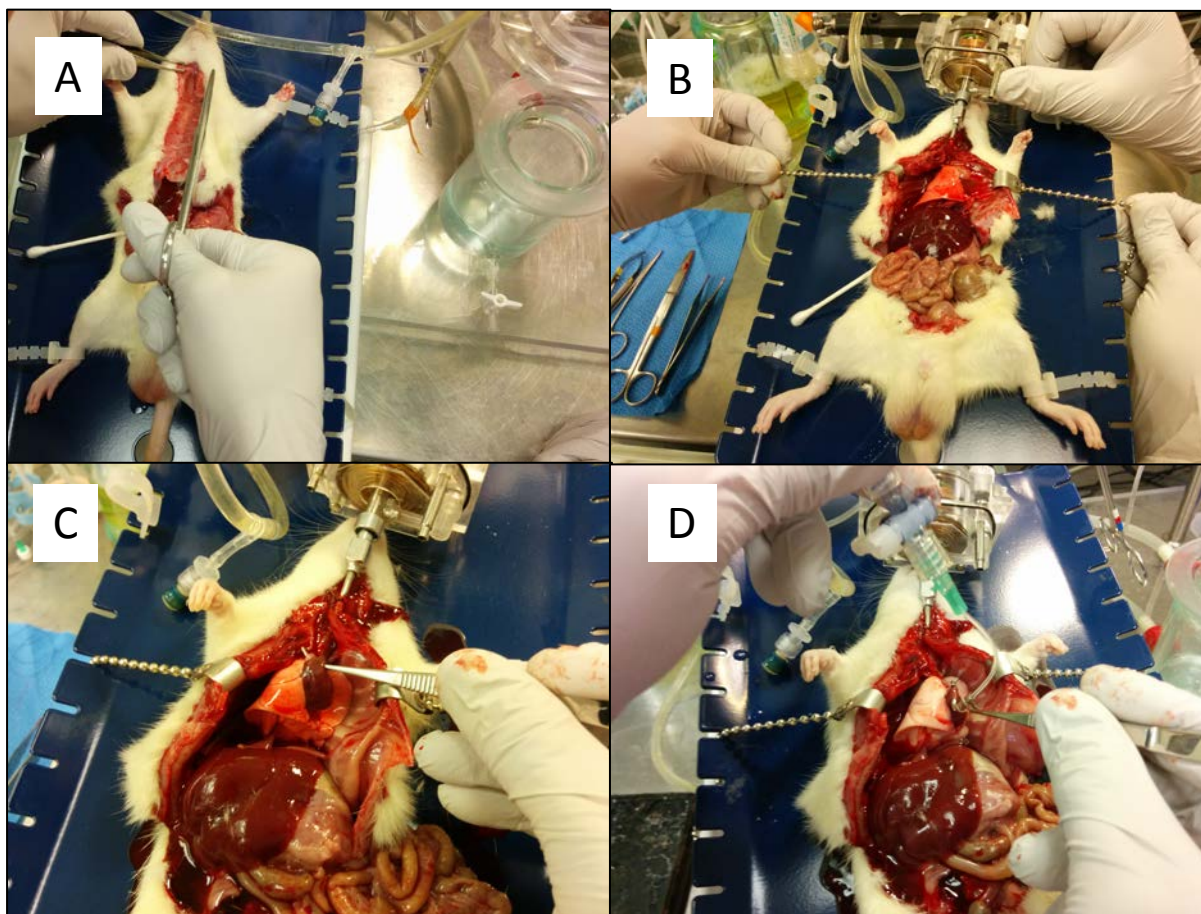




# Figure 3

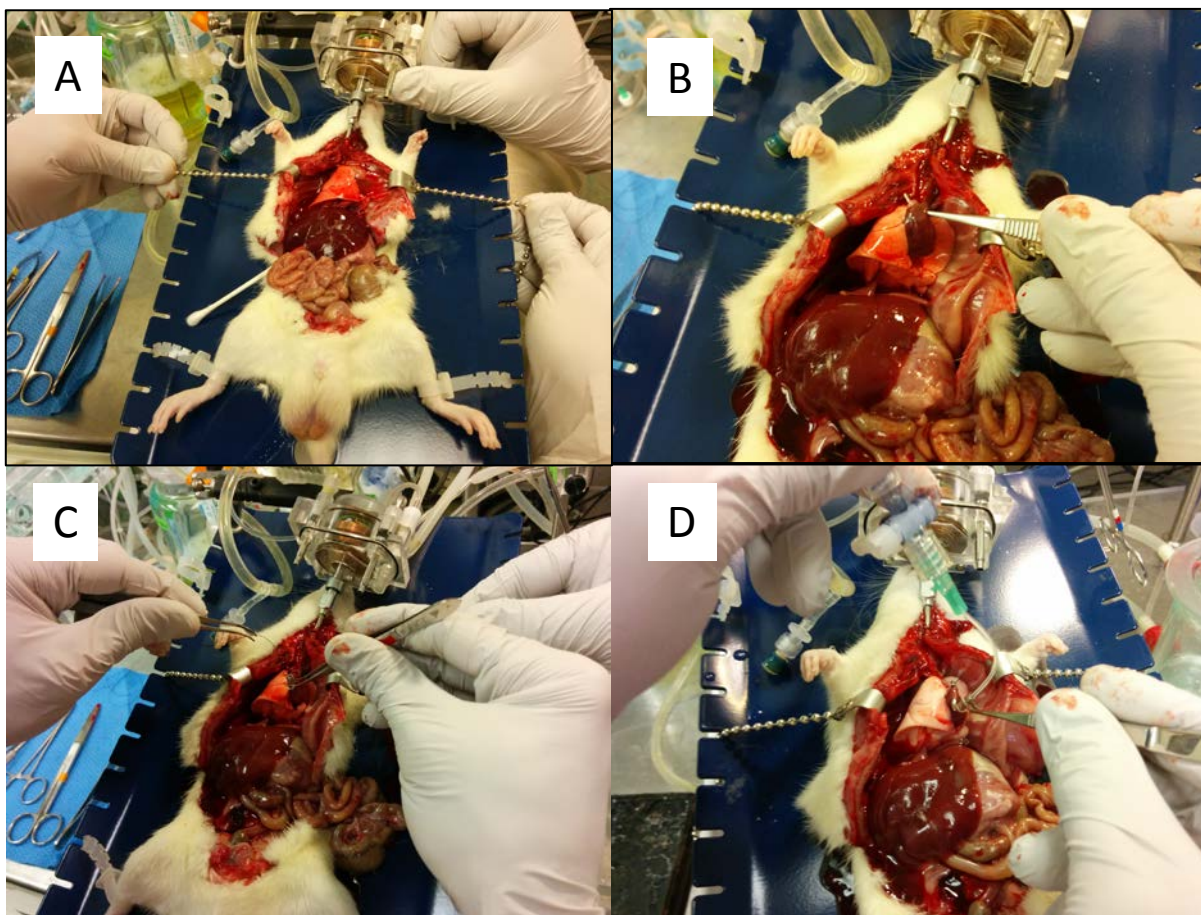


# Figure 4





# Figure 5



# Figure

[Click here to download Figure: JoVE EVLP Figures final 6.pdf](#)

## Figure 6





# Figure 7

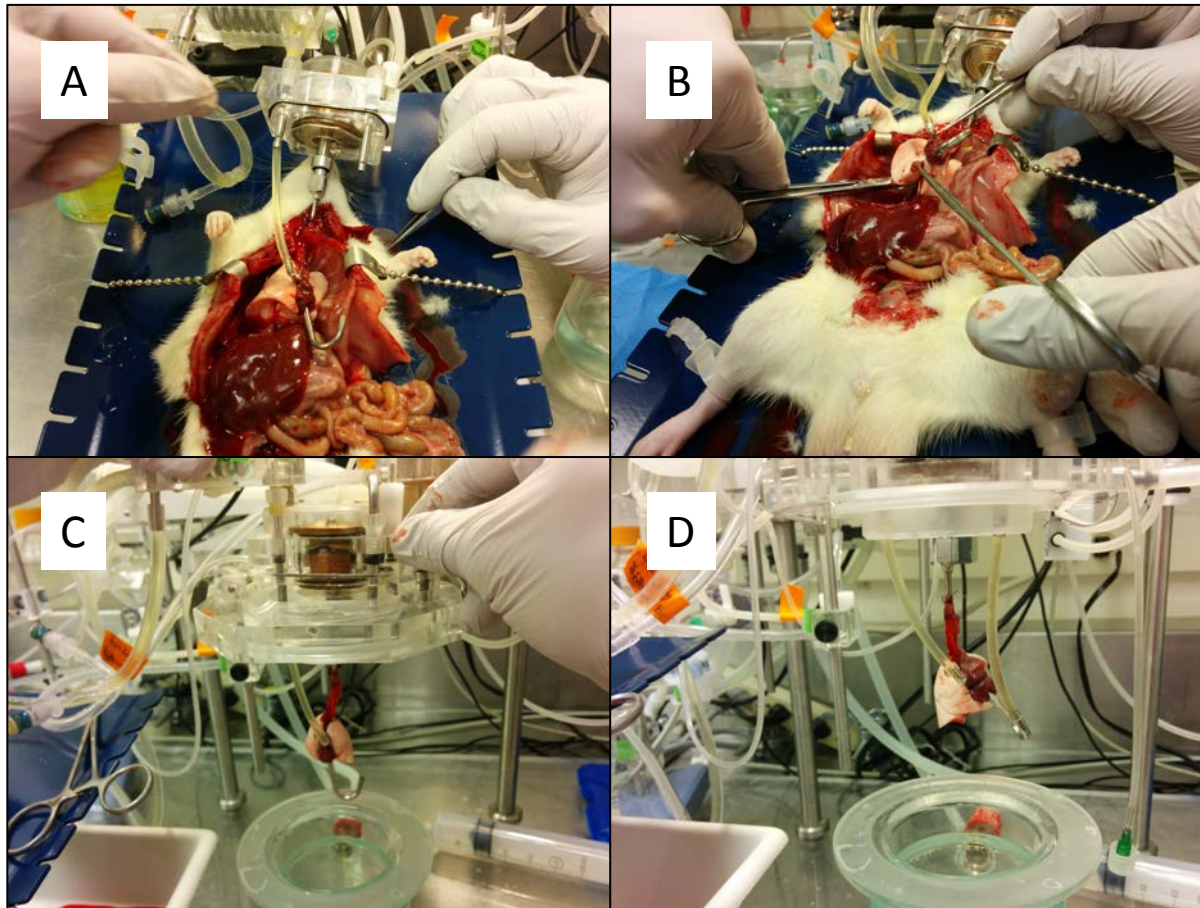


# Figure 8

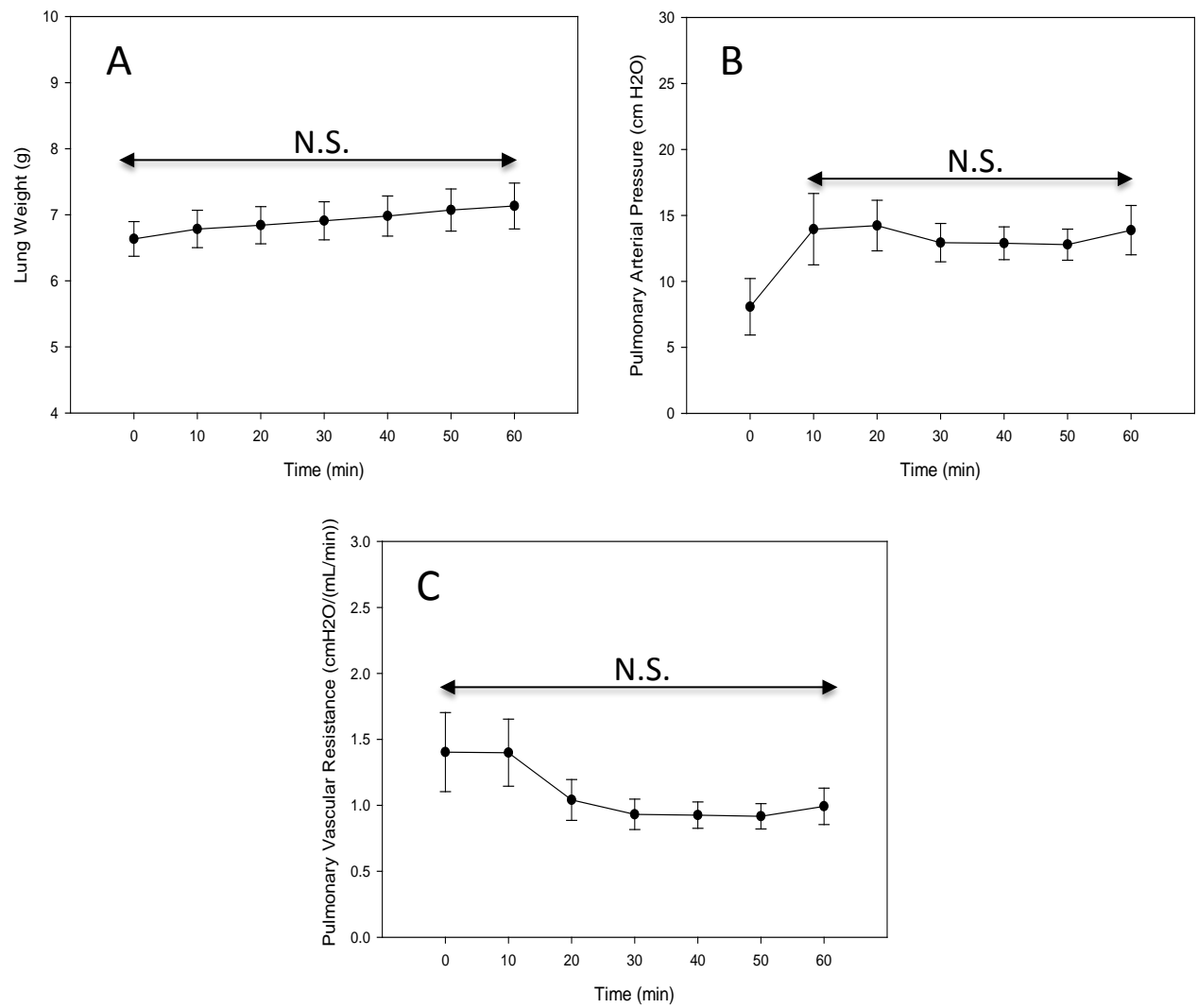




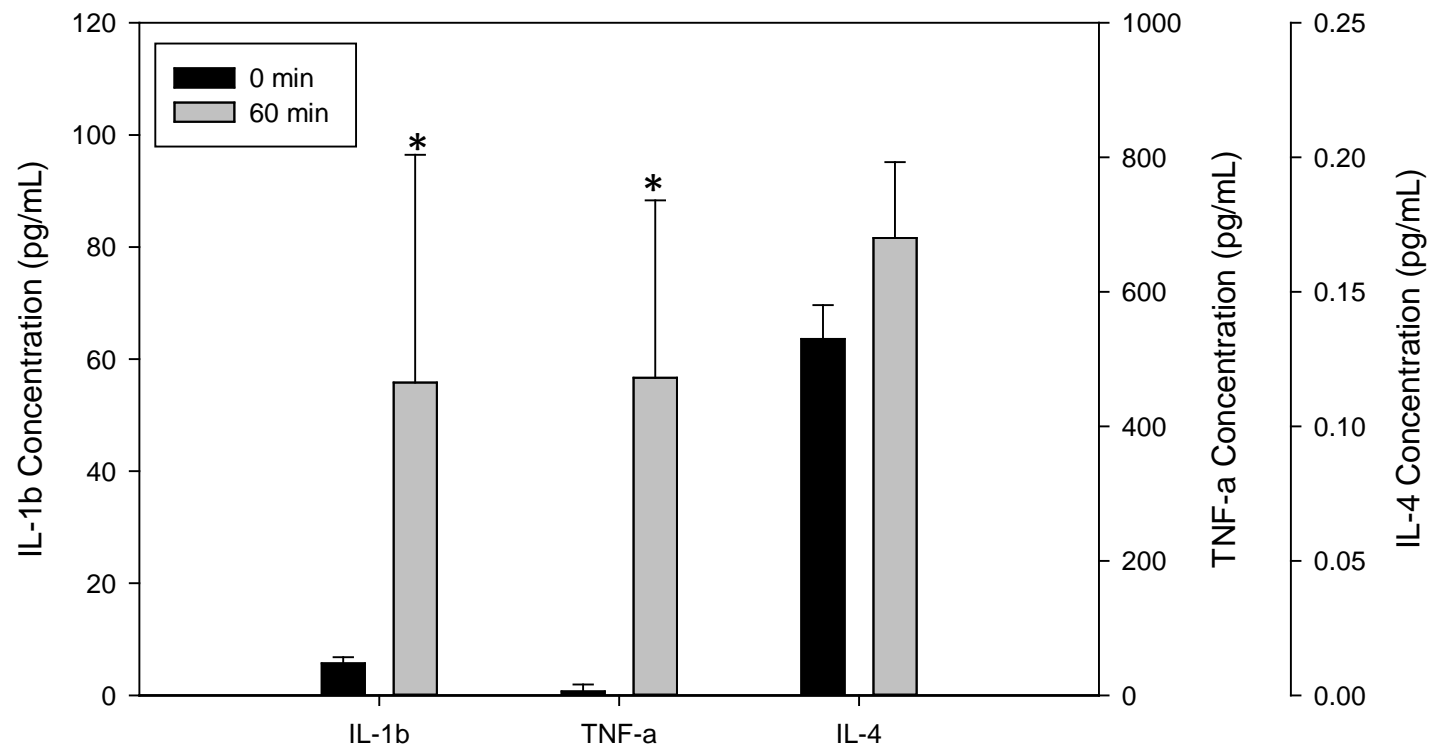
# Figure 9



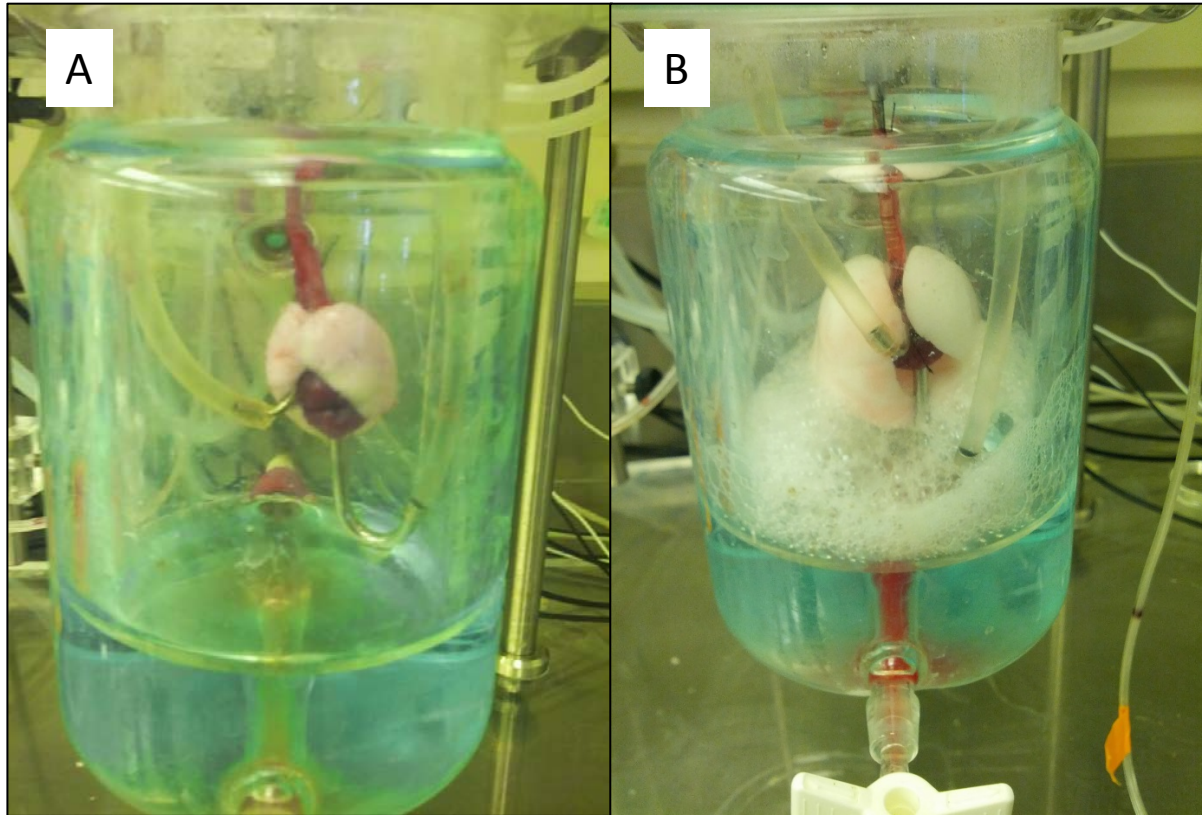
# Figure 10



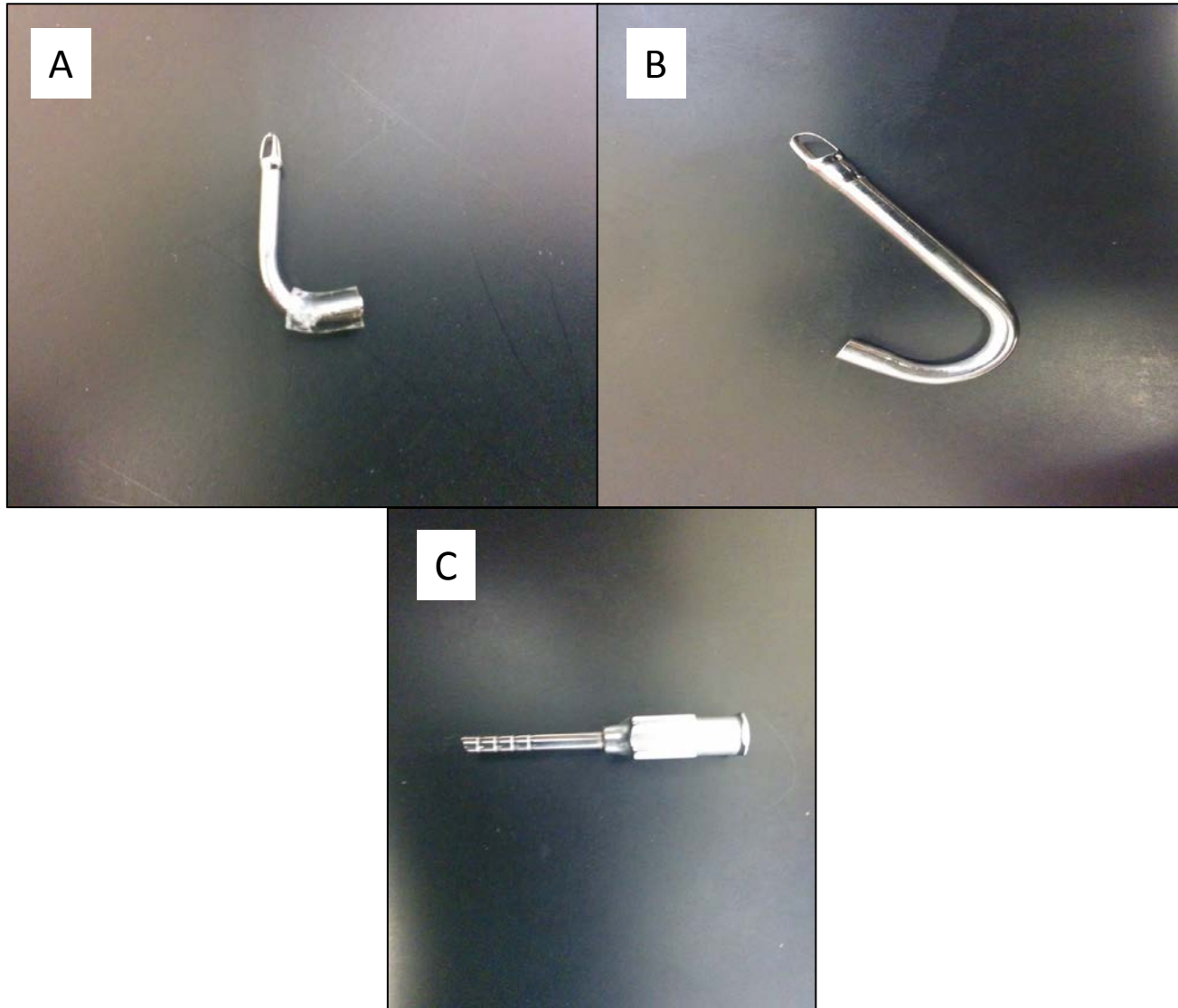
# Figure 11



# Figure 12

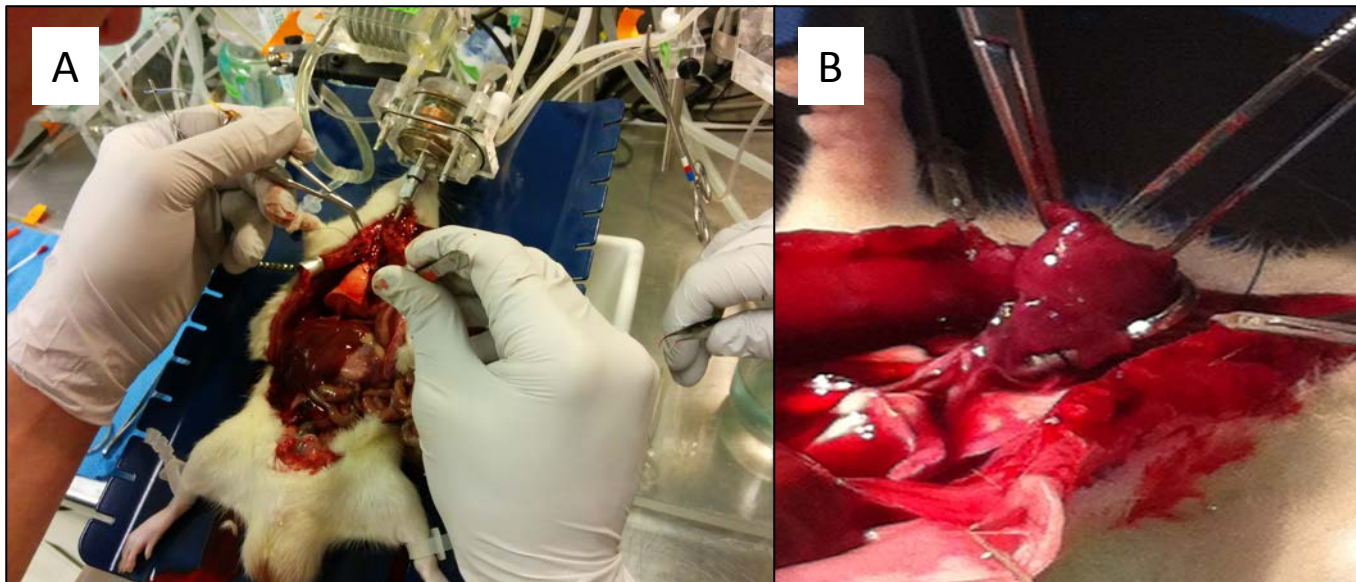


# Figure 13





# Figure 14





Name of Material/ Equipment	Company	Catalog Number
IPL-2 Basic Lung Perfusion System	Harvard Apparatus	
Tweezer #5 stainless steel, curved 11cm	Kent Scientific Corporation	IND500232
Tweezer #5 Dumostar, 11cm	Kent Scientific Corporation	INS500085-A
Tweezer #7 Titanium, 12cm tips curved	Kent Scientific Corporation	INS600187
McPherson-Vannas Scissors 8cm, Str 5mm	Kent Scientific Corporation	INS14124
Vannas Scissors 8cm Str 5mm	Kent Scientific Corporation	INS14003
Instrument Sterilization Tray 5" x 7"	Kent Scientific Corporation	INS800101
Heparin 30,000 units per 30mL	APP Pharmaceuticals	Supplied from OSU Pharmacy
Ketamine 500mg per 5mL	JHP Pharmaceuticals	Supplied from OSU Pharmacy
Xylazine 100mg per 1mL	Akorn	Supplied from OSU Pharmacy
10cc insulin syringe 29 Ga x 1/2" needle	B-D	309301
Hyflex NBR	Ansell	S-17310M
BL1500	Sartarius	Practum 1102-1S
Large Flat Bottom Restrainer	Braintree Scientific Inc	FB L 3.375 dia x 8.5, 250-500gm rat
Sterling Nitrile Powder-free Exam Gloves, Large	Kiberly-Clark	50708
Rapidpoint 405	Siemens	
Fiberoxygenator D150	Hugo Sachs Elektronik	PY2 73-3762
LabChart v7.3.7	ADInstruments	
Tracheal cannula	Harvard Apparatus	733557
Pulmonary Artery cannula	Harvard Apparatus	730710
Left Atrium cannula	Harvard Apparatus	730712
Peristaltic Pump	Ismatec	ISM 827B
Small Animal Ventilator model 683	Harvard Apparatus	55-000
Ecoline Star Edition 003, E100	Lauda	LCK 1879
Tubing Cassette	Cole-Parmer	IS 0649
Connect kit D150	Cole-Parmer	VK 73-3763
PowerLab 8/35	ADInstruments	730045
TAM-A transducer amplifier module type 705/1	Hugo Sachs - Harvard Apparatus	73-0065
TAM-D transducer amplifier type 705/2	Hugo Sachs - Harvard Apparatus	73-1793
SCP Servo controller for perfusion type 704	Hugo Sachs - Harvard Apparatus	732806
CFBA carrier frequency bridge amplifier type 672	Hugo Sachs - Harvard Apparatus	731747
VCM ventilator control module type 681	Hugo Sachs - Harvard Apparatus	731741

TCM time control module type 686	Hugo Sachs - Harvard Apparatus	731750
IL2 Tube set for perfusate	Harvard Apparatus	733842
Tube set for moist chamber	Harvard Apparatus	73V83157
Tygon E-3603 Tubing 2.4mm ID	Harvard Apparatus	721017
Tygon E-3603 Tubing 3.2mm ID	Harvard Apparatus	721019
low potassium dextran glucose solution		

## Comments/Description

Bite proof gloves

Scale

Rat tunnel for injection

blood gas analyzer

Water Heater

perfusate line entering lung  
perfusate line leaving lung  
flushing the lung



1 Alewife Center #200  
Cambridge, MA 02140  
tel. 617.945.9051  
www.jove.com

# ARTICLE AND VIDEO LICENSE AGREEMENT

Title of Article:

Method of isolated ex-vivo lung perfusion in a Rat Model: Lessons Learned from Developing a Rat EVLP Program

Author(s):

Kevin Nelson, Emre Eren, Tyler Spata, MD, Malak Tadres, Sylvester M. Black, MD, PhD, Samir Ghadiali, PhD and Bryan A. Whitson, MD, PhD

Item 1 (check one box): The Author elects to have the Materials ~~be~~ made available (as described at <http://www.jove.com/publish>) via: ☐ Standard Access ☒ Open Access

Item 2 (check one box):

- ☒ The Author is NOT a United States government employee.
- ☐ The Author is a United States government employee and the Materials were prepared in the course of his or her duties as a United States government employee.
- ☐ The Author is a United States government employee but the Materials were NOT prepared in the course of his or her duties as a United States government employee.

## ARTICLE AND VIDEO LICENSE AGREEMENT

1. **Defined Terms.** As used in this Article and Video License Agreement, the following terms shall have the following meanings: **"Agreement"** means this Article and Video License Agreement; **"Article"** means the article specified on the last page of this Agreement, including any associated materials such as texts, figures, tables, artwork, abstracts, or summaries contained therein; **"Author"** means the author who is a signatory to this Agreement; **"Collective Work"** means a work, such as a periodical issue, anthology or encyclopedia, in which the Materials in their entirety in unmodified form, along with a number of other contributions, constituting separate and independent works in themselves, are assembled into a collective whole; **"CRC License"** means the Creative Commons Attribution-Non Commercial-No Derivs 3.0 Unported Agreement, the terms and conditions of which can be found at: <http://creativecommons.org/licenses/by-nc-nd/3.0/legalcode>; **"Derivative Work"** means a work based upon the Materials or upon the Materials and other pre-existing works, such as a translation, musical arrangement, dramatization, fictionalization, motion picture version, sound recording, art reproduction, abridgment, condensation, or any other form in which the Materials may be recast, transformed, or adapted; **"Institution"** means the institution, listed on the last page of this Agreement, by which the Author was employed at the time of the creation of the Materials; **"JoVE"** means MyJoVE Corporation, a Massachusetts corporation and the publisher of *The Journal of Visualized Experiments*; **"Materials"** means the Article and / or the Video; **"Parties"** means the Author and JoVE; **"Video"** means any video(s) made by the Author, alone or in conjunction with any other parties, or by JoVE or its affiliates or agents, individually or in collaboration with the Author or any other parties, incorporating all or any portion of the Article, and in which the Author may or may not appear.

2. **Background.** The Author, who is the author of the Article, in order to ensure the dissemination and protection of the Article, desires to have the JoVE publish the Article and create and transmit videos based on the Article. In furtherance of such goals, the Parties desire to memorialize in this Agreement the respective rights of each Party in and to the Article and the Video.

3. **Grant of Rights in Article.** In consideration of JoVE agreeing to publish the Article, the Author hereby grants to JoVE, subject to **Sections 4 and 7** below, the exclusive, royalty-free, perpetual (for the full term of copyright in the Article, including any extensions thereto) license (a) to publish, reproduce, distribute, display and store the Article in all forms, formats and media whether now known or hereafter developed (including without limitation in print, digital and electronic form) throughout the world, (b) to translate the Article into other languages, create adaptations, summaries or extracts of the Article or other Derivative Works (including, without limitation, the Video) or Collective Works based on all or any portion of the Article and exercise all of the rights set forth in (a) above in such translations, adaptations, summaries, extracts, Derivative Works or Collective Works and (c) to license others to do any or all of the above. The foregoing rights may be exercised in all media and formats, whether now known or hereafter devised, and include the right to make such modifications as are technically necessary to exercise the rights in other media and formats. If the "Open Access" box has been checked in **Item 1** above, JoVE and the Author hereby grant to the public all such rights in the Article as provided in, but subject to all limitations and requirements set forth in, the CRC License.

## ARTICLE AND VIDEO LICENSE AGREEMENT

4. **Retention of Rights in Article.** Notwithstanding the exclusive license granted to JoVE in **Section 3** above, the Author shall, with respect to the Article, retain the non-exclusive right to use all or part of the Article for the non-commercial purpose of giving lectures, presentations or teaching classes, and to post a copy of the Article on the Institution's website or the Author's personal website, in each case provided that a link to the Article on the JoVE website is provided and notice of JoVE's copyright in the Article is included. All non-copyright intellectual property rights in and to the Article, such as patent rights, shall remain with the Author.

5. **Grant of Rights in Video – Standard Access.** This **Section 5** applies if the "Standard Access" box has been checked in **Item 1** above or if no box has been checked in **Item 1** above. In consideration of JoVE agreeing to produce, display or otherwise assist with the Video, the Author hereby acknowledges and agrees that, Subject to **Section 7** below, JoVE is and shall be the sole and exclusive owner of all rights of any nature, including, without limitation, all copyrights, in and to the Video. To the extent that, by law, the Author is deemed, now or at any time in the future, to have any rights of any nature in or to the Video, the Author hereby disclaims all such rights and transfers all such rights to JoVE.

6. **Grant of Rights in Video – Open Access.** This **Section 6** applies only if the "Open Access" box has been checked in **Item 1** above. In consideration of JoVE agreeing to produce, display or otherwise assist with the Video, the Author hereby grants to JoVE, subject to **Section 7** below, the exclusive, royalty-free, perpetual (for the full term of copyright in the Article, including any extensions thereto) license (a) to publish, reproduce, distribute, display and store the Video in all forms, formats and media whether now known or hereafter developed (including without limitation in print, digital and electronic form) throughout the world, (b) to translate the Video into other languages, create adaptations, summaries or extracts of the Video or other Derivative Works or Collective Works based on all or any portion of the Video and exercise all of the rights set forth in (a) above in such translations, adaptations, summaries, extracts, Derivative Works or Collective Works and (c) to license others to do any or all of the above. The foregoing rights may be exercised in all media and formats, whether now known or hereafter devised, and include the right to make such modifications as are technically necessary to exercise the rights in other media and formats. For any Video to which this Section 6 is applicable, JoVE and the Author hereby grant to the public all such rights in the Video as provided in, but subject to all limitations and requirements set forth in, the CRC License.

7. **Government Employees.** If the Author is a United States government employee and the Article was prepared in the course of his or her duties as a United States government employee, as indicated in **Item 2** above, and any of the licenses or grants granted by the Author hereunder exceed the scope of the 17 U.S.C. 403, then the rights granted hereunder shall be limited to the maximum rights permitted under such

statute. In such case, all provisions contained herein that are not in conflict with such statute shall remain in full force and effect, and all provisions contained herein that do so conflict shall be deemed to be amended so as to provide to JoVE the maximum rights permissible within such statute.

8. **Likeness, Privacy, Personality.** The Author hereby grants JoVE the right to use the Author's name, voice, likeness, picture, photograph, image, biography and performance in any way, commercial or otherwise, in connection with the Materials and the sale, promotion and distribution thereof. The Author hereby waives any and all rights he or she may have, relating to his or her appearance in the Video or otherwise relating to the Materials, under all applicable privacy, likeness, personality or similar laws.

9. **Author Warranties.** The Author represents and warrants that the Article is original, that it has not been published, that the copyright interest is owned by the Author (or, if more than one author is listed at the beginning of this Agreement, by such authors collectively) and has not been assigned, licensed, or otherwise transferred to any other party. The Author represents and warrants that the author(s) listed at the top of this Agreement are the only authors of the Materials. If more than one author is listed at the top of this Agreement and if any such author has not entered into a separate Article and Video License Agreement with JoVE relating to the Materials, the Author represents and warrants that the Author has been authorized by each of the other such authors to execute this Agreement on his or her behalf and to bind him or her with respect to the terms of this Agreement as if each of them had been a party hereto as an Author. The Author warrants that the use, reproduction, distribution, public or private performance or display, and/or modification of all or any portion of the Materials does not and will not violate, infringe and/or misappropriate the patent, trademark, intellectual property or other rights of any third party. The Author represents and warrants that it has and will continue to comply with all government, institutional and other regulations, including, without limitation all institutional, laboratory, hospital, ethical, human and animal treatment, privacy, and all other rules, regulations, laws, procedures or guidelines, applicable to the Materials, and that all research involving human and animal subjects has been approved by the Author's relevant institutional review board.

10. **JoVE Discretion.** If the Author requests the assistance of JoVE in producing the Video in the Author's facility, the Author shall ensure that the presence of JoVE employees, agents or independent contractors is in accordance with the relevant regulations of the Author's institution. If more than one author is listed at the beginning of this Agreement, JoVE may, in its sole discretion, elect not take any action with respect to the Article until such time as it has received complete, executed Article and Video License Agreements from each such author. JoVE reserves the right, in its absolute and sole discretion and without giving any reason therefore, to accept or decline any work submitted to JoVE. JoVE and its employees, agents and independent contractors shall have

## ARTICLE AND VIDEO LICENSE AGREEMENT

full, unfettered access to the facilities of the Author or of the Author's institution as necessary to make the Video, whether actually published or not. JoVE has sole discretion as to the method of making and publishing the Materials, including, without limitation, to all decisions regarding editing, lighting, filming, timing of publication, if any, length, quality, content and the like.

11. **Indemnification.** The Author agrees to indemnify JoVE and/or its successors and assigns from and against any and all claims, costs, and expenses, including attorney's fees, arising out of any breach of any warranty or other representations contained herein. The Author further agrees to indemnify and hold harmless JoVE from and against any and all claims, costs, and expenses, including attorney's fees, resulting from the breach by the Author of any representation or warranty contained herein or from allegations or instances of violation of intellectual property rights, damage to the Author's or the Author's institution's facilities, fraud, libel, defamation, research, equipment, experiments, property damage, personal injury, violations of institutional, laboratory, hospital, ethical, human and animal treatment, privacy or other rules, regulations, laws, procedures or guidelines, liabilities and other losses or damages related in any way to the submission of work to JoVE, making of videos by JoVE, or publication in JoVE or elsewhere by JoVE. The Author shall be responsible for, and shall hold JoVE harmless from, damages caused by lack of sterilization, lack of cleanliness or by contamination due to the making of a video by JoVE its employees, agents or independent contractors. All sterilization, cleanliness or decontamination procedures shall be solely the responsibility of the Author and shall be undertaken at the Author's

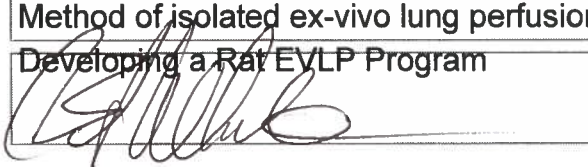
expense. All indemnifications provided herein shall include JoVE's attorney's fees and costs related to said losses or damages. Such indemnification and holding harmless shall include such losses or damages incurred by, or in connection with, acts or omissions of JoVE, its employees, agents or independent contractors.

12. **Fees.** To cover the cost incurred for publication, JoVE must receive payment before production and publication the Materials. Payment is due in 21 days of invoice. Should the Materials not be published due to an editorial or production decision, these funds will be returned to the Author. Withdrawal by the Author of any submitted Materials after final peer review approval will result in a US\$1,200 fee to cover pre-production expenses incurred by JoVE. If payment is not received by the completion of filming, production and publication of the Materials will be suspended until payment is received.

13. **Transfer, Governing Law.** This Agreement may be assigned by JoVE and shall inure to the benefits of any of JoVE's successors and assignees. This Agreement shall be governed and construed by the internal laws of the Commonwealth of Massachusetts without giving effect to any conflict of law provision thereunder. This Agreement may be executed in counterparts, each of which shall be deemed an original, but all of which together shall be deemed to me one and the same agreement. A signed copy of this Agreement delivered by facsimile, e-mail or other means of electronic transmission shall be deemed to have the same legal effect as delivery of an original signed copy of this Agreement.

A signed copy of this document must be sent with all new submissions. Only one Agreement required per submission.

### CORRESPONDING AUTHOR:

Name: Bryan A. Whitson, MD, PhD  
Department: Department of Surgery  
Institution: The Ohio State University Wexner Medical Center  
Article Title: Method of isolated ex-vivo lung perfusion in a Rat Model: Lessons Learned from Developing a Rat EVLP Program  
Signature:  Date: 5/9/2014

Please submit a signed and dated copy of this license by one of the following three methods:

- 1) Upload a scanned copy of the document as a pdf on the JoVE submission site;
- 2) Fax the document to +1.866.381.2236;
- 3) Mail the document to JoVE / Attn: JoVE Editorial / 1 Alewife Center #200 / Cambridge, MA 02139

For questions, please email [submissions@jove.com](mailto:submissions@jove.com) or call +1.617.945.9051



Dear Editor,

Thank you for your review of our manuscript titled "Method of isolated ex-vivo lung perfusion in a Rat Model: Lessons Learned from Developing a Rat EVLP Program". Below we have provided a point-by-point response to your comments and the reviewer comments. We have also made all associated revisions in the revised text. We look forward to publication of this method in the Journal of Visualized Experiments.

Samir Ghadiali & Bryan Whitson (co-corresponding authors)

**Editorial Comments:**

*1. All of your previous revisions have been incorporated into the most recent version of the manuscript. Please download this version of the Microsoft word document from the "file inventory" to use for any subsequent changes.*

Thank you, we will use the most recent version of the manuscript for all subsequent changes.

*2. Please describe the data acquisition program setup in more detail. What is being recorded, how and to what are they connected?*

Protocol step 1.4 now includes the individual transducers and their purpose.

*3. Please reduce/remove instances of the pronoun "our" throughout the manuscript.*

All instances of the pronoun "our" have been removed.

*4. Please take this opportunity to thoroughly proofread your manuscript to ensure that there are no spelling or grammatical errors. Your JoVE editor will not copy-edit your manuscript and any errors in your submitted revision may be present in the published version.*

We thank the Editor for the opportunity to proofread the manuscript.

*5. Please disregard the comment below if all of your figures are original.*

*If you are re-using figures from a previous publication, you must obtain explicit permission to re-use the figure from the previous publisher (this can be in the form of a letter from an editor or a link to the editorial policies that allows you to re-publish the figure). Please upload the text of the re-print permission (may be copied and pasted from an email/website) as a Word document to the Editorial Manager site in the "Supplemental files (as requested by JoVE)" section. Please also cite the figure appropriately in the figure legend, i.e. "This figure has been modified from [citation]."*

All figures are original.



## **Reviewer #1 Comments:**

Major Concerns:

*1. Under representative results, page 12, it is unclear if the physiological data refers to control (low tidal volume/PEEP) or VILI (high tidal volume/PEEP) experiments.*

*This needs to be clarified.*

Representative results are shown in Figures 10 and 11. The data in Figure 10 is from experiments run at low tidal volume/low PEEP (i.e. 4mL/kg tidal volume and 2cmH<sub>2</sub>O PEEP) while data in Figure 11 is from a high tidal volume/high PEEP of 10 mL/kg and 8 cm H<sub>2</sub>O PEEP. These conditions have been clarified in the text.

*If the graph refers to the control group and edema with increasing Pulmonary Artery pressures are observed during the first 60 minutes of perfusion this means that the proposed technique is not stable.*

First, while there may seem to be a trend of increasing lung weight with respect to time, statistical analysis (ANOVA) clearly demonstrates that there is no statistically significant increase in lung weight over 60 minutes ( $p=0.92$ ). Furthermore, The lower pulmonary artery pressure (PAP) at the 0 min time point is a result of lower flow and ventilation settings used at the beginning of all experiments (3 mL/min) vs the larger flow rates (12 mL/min) used during the experiment. In addition, the PAP remains constant after the  $t=10$  min time point with no statistically significant changes after  $t=10$  min (ANOVA on ranks,  $p = 0.89$ ). We therefore conclude that our technique is stable for 60 minutes and these point have been made clear in the manuscript.

*Several authors have described isolated lung perfusion with minimal edema formation during prolonged rat lung perfusion. Referring to previous published data with isolated/ex vivo rat lung perfusion and how these experiences help or not Nelson et al will be a great benefit to the reading audience.*

*a- Noda K et. Al. Successful prolonged ex vivo lung perfusion for graft preservation in rats. Eur J Cardiothorac Surg. 2014 Mar;45(3):e54-60.*

*b- Niemeier RW. The isolated perfused lung. Environ Health Perspect. Jun 1984; 56: 35-41.*

*If the physiological data presented by Nelson et al in figure 8 refers to the VILI group, then data from the control (low tidal volume, low PEEP) should be added to the graph to demonstrate that the authors proposed method is stable when compared to an injurious method (VILI group).*

We thank the reviewer for the additional citations. They will be incorporated into the manuscript as suggested.

*2. Figure 9 is also difficult to interpret. If at time 0 rats were in a low tidal volume EVLP and at time 60 converted to a high tidal volume EVLP is the cytokine response related to the low tidal volume method or to the high tidal volume change. This should be clarified.*

*My recommendation will be a set of experiments in which the rat lungs are evaluated ex vivo at low tidal volume for 60 minutes compared to a set of experiments in which the rat lungs are under VILI conditions for 60 minutes.*

*Then I will plot the physiological and cytokine data from both EVLP conditions (Low vs High tidal volume). By doing this the readers will understand a couple things:*

*a- that the proposed method (low tidal volume/PEEP) of EVLP leads to a very stable and non-injurious preparation providing a platform for research studies. Low edema, low inflammatory response.*

*b- that high tidal volume/PEEP during 60 minutes of EVLP is associated to high inflammatory response and edema formation.*

We believe the reviewer is referring to Figure 11. The goal of this figure is to demonstrate that a high tidal volume/high PEEP ventilation protocol generates significant inflammation and that our technique is able to reproduce this component of ventilation induced lung injury. We have clarified this point and note that the tidal volume and PEEP was set at time 0 and was maintained throughout the 60 minute perfusion. This data clearly demonstrates that 60 min of high tidal volume/PEEP ventilation induces a large increase in pro-inflammatory cytokines (IL1 $\beta$ , TNF $\alpha$ ) and no statistically significant change in the anti-inflammatory cytokine (IL-4). The reviewer's suggestions for further investigation in the effect of VILI is intriguing and we will work toward pursuing answers to that question in our upcoming work. The intent of the current work was to describe and detail this reproducible approach to rodent EVLP, and to provide the granularity that the literature is lacking so that other researchers can benefit from the steep learning curve involved in this procedure.

Minor Concerns:

*1. Referring to background in EVLP the authors comment "Typically, the lungs are ventilated at 50% of total lung capacity or 20 cmH<sub>2</sub>O of peak airway pressure with a fraction of inspired oxygen (FiO<sub>2</sub>) of 30 to 50% [4]. Preservation solution is perfused at 40-60ml/kg (approximately 40% of the predicted cardiac output of 100mL/kg) [5, 6] at a temperature 4 to 8°C with an ischemic time less than 8 hours, but possibly up to 12 hours [7]."*

*This paragraph is not clear. Are the authors referring to cold lung preservation or ex vivo lung perfusion? In addition is not clear if the authors refer to human and large animal ex vivo lung perfusion protocols or small animal protocols. Reference 6 is from a large animal model of EVLP and 4 is from a rat model of isolated lung perfusion.*

*I recommend reviewing this paragraph for consistency. EVLP methods for humans and large animals present different challenges to small animals as the authors comment.*

The paragraph has been modified to improve the clarity and to note the differences between human/large animal and small animal EVLP protocols.

*2- Under the Perfusate section, the authors briefly analyze what characteristics the ideal perfusate should have. In addition they comment on a commercially available solution "Steen Solution" for EVLP, which contains human albumin, and reflect on the potential effects of human albumin across species and how this could potentially affect results.*

*One aspect that the authors overlook is that there are also potential detrimental effects of dextran across species. Especially in rats, with some strains being allergic to it, which favors pulmonary edema.*

*I recommend the authors take into account the potential detrimental effects of dextran in a rat model of ex vivo lung perfusion and add this to their discussion/comments.*

*Harris J.M. Differences in responses between rat strains and colonies. Food and cosmetics Toxicology Volume 3, 1965, Pages 199-202.*

Thank you, this citation has been added.

*3- Some pictures reveal that no PPE other than gloves are being used when handling the animals. I recommend the use of pictures were a lab coat or similar PPE protection is being used to comply with international animal handling techniques.*

Noted.

Additional Comments to Authors:

*1. I would like to thank the authors for the opportunity to review their work.*

We thank the Reviewer for their insightful review of our manuscript.

## **Reviewer #2 Comments:**

### Major Concerns:

*1. Lacked additional data about perfusate used in infusion:*

*- Association anti-inflammatory drugs?*

No anti-inflammatory drugs or agents were evaluated. These data are for variable ventilation strategies alone and as a description/model manuscript.

*2. About stabilization time of the system:*

*The ventilatory parameters and flow were changed. Was there a time limit?*

Step 4.3 in the procedure states the parameters are to be changed in the initial 15 minutes of the experiment.

*3. Recently a very important work in the area was published and would be interesting to include in the discussion by highlighting important points in common with this article:*

*Noda K, Shigemura N, Tanaka Y, et al.*

*Successful prolonged ex vivo lung perfusion for graft preservation in rats. Eur J Cardiothorac Surg (Germany), Mar 2014, 45(3) pe54-60.*

**This citation has been added.**

### Minor Concerns:

*1. Line 125, 127 and 137 What figures are referred?*

Lines 125 and 127 refer to Figure 1, and line 137 refers to Figure 2.