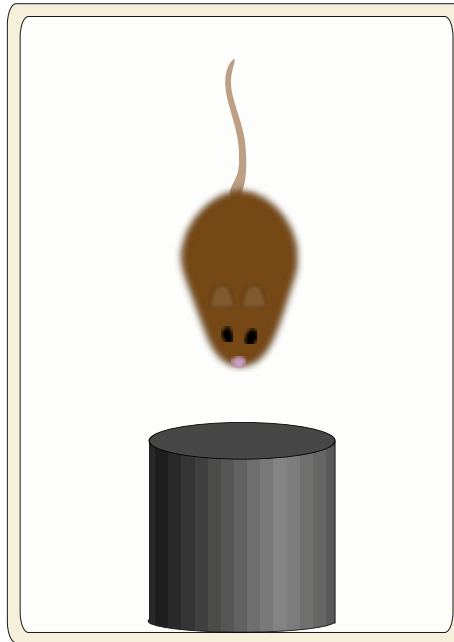
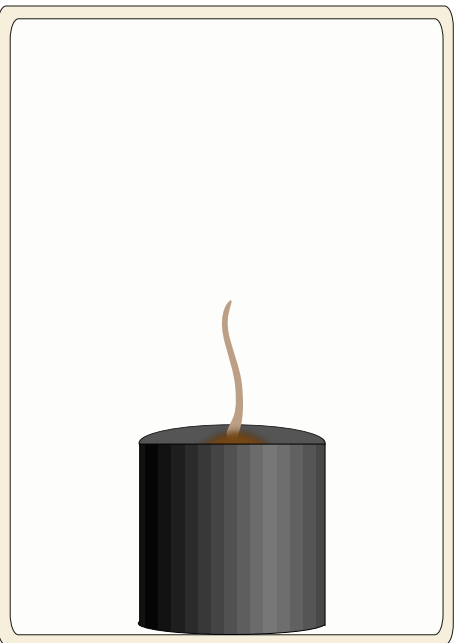


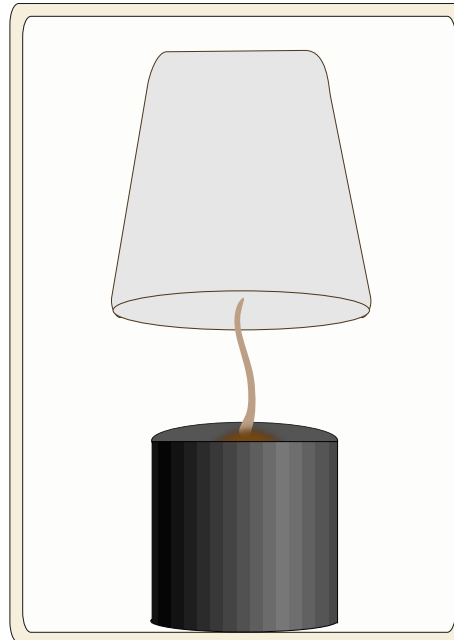
1) Typical cage arrangement



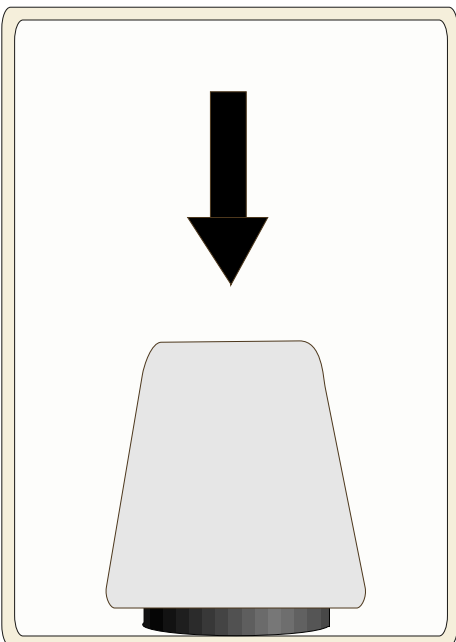
2) Arrange nesting tube perpendicular to back cage wall



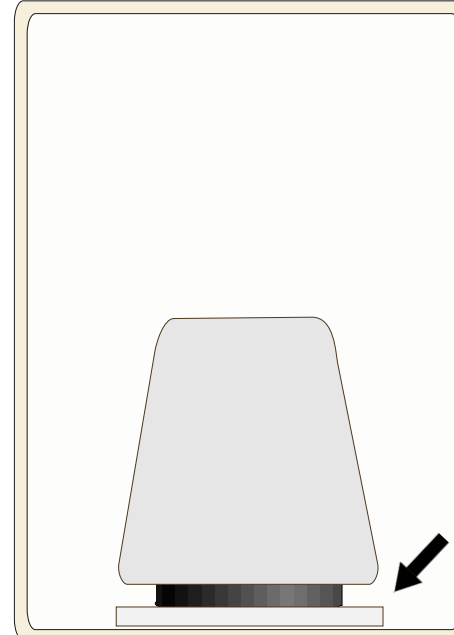
3) Wait for cotton rat to enter nesting tube



4) Quickly open cage top and line capture container up with nesting tube



5) In one swift, fast motion, cover the nesting tube with the capture container, trapping the cotton rat



6) Carefully wedge the lid of the capture container between the nesting tube and the cage wall, then transfer cotton rat to the anesthesia induction chamber