

# Journal of Visualized Experiments

## Impact assessment of repeated exposure of organotypic 3D bronchial and nasal tissue culture models to whole cigarette smoke --Manuscript Draft--

|   |   |
|---|---|
| Manuscript Number:                            | JoVE52325R4   |
| Full Title:                                   | Impact assessment of repeated exposure of organotypic 3D bronchial and nasal tissue culture models to whole cigarette smoke   |
| Article Type:                                 | Methods Article - JoVE Produced Video   |
| Keywords:                                     | human organotypic bronchial epithelial; 3D culture; in vitro exposure system; cigarette smoke; cilia beating; xenobiotic metabolism; network models; systems toxicology |
| Manuscript Classifications:                   | 3.8: Respiratory Tract Diseases; 3.8.200: Ciliary Motility Disorders; 4.13.444.735.544: RNA, Messenger  |
| Corresponding Author:                         | Stephanie Boue<br>Philip Morris International R&D<br>Neuchatel, Neuchatel SWITZERLAND   |
| Corresponding Author Secondary Information:   |   |
| Corresponding Author E-Mail:                  | Stephanie.Boue@pmi.com  |
| Corresponding Author's Institution:           | Philip Morris International R&D   |
| Corresponding Author's Secondary Institution: |   |
| First Author:                                 | Diana Kuehn   |
| First Author Secondary Information:           |   |
| Other Authors:                                | Diana Kuehn   |
|   | Shoaib Majeed   |
|   | Emmanuel Guedj  |
|   | Remi Dulize   |
|   | Karine Baumer   |
|   | Anita Iskandar  |
|   | Florian Martin  |
|   | Radina Kostadinova  |
|   | Carole Mathis   |
|   | Nikolai V Ivanov  |
|   | Stefan Frentzl  |
|   | Julia Hoeng   |
|   | Manuel C Peitsch  |
|   |   |
| Order of Authors Secondary Information:       |   |
|   |   |
|   |   |
|   |   |
|   |   |
|   |   |
|   |   |
|   |   |
|   |   |
|   |   |

|  |  |
|--|--|
| <b>Abstract:</b>   | <p>Cigarette smoke (CS) has a major impact on lung biology and may result in the development of lung diseases such as chronic obstructive pulmonary disease or lung cancer. To understand the underlying mechanisms of disease development, it would be important to examine the impact of CS exposure directly on lung tissues. However, this approach is difficult to implement in epidemiological studies because lung tissue sampling is complex and invasive. Alternatively, tissue culture models can facilitate the assessment of exposure impacts on the lung tissue. Submerged 2D cell cultures, such as normal human bronchial epithelial (NHBE) cell cultures, have traditionally been used for this purpose. However, they cannot be exposed directly to smoke in a similar manner to the in vivo exposure situation. Recently developed 3D tissue culture models better reflect the in vivo situation because they can be cultured at the air-liquid interface (ALI). Their basal sides are immersed in the culture medium; whereas, their apical sides are exposed to air. Moreover, organotypic tissue cultures that contain different type of cells, better represent the physiology of the tissue in vivo. In this work, the utilization of an in vitro exposure system to expose human organotypic bronchial and nasal tissue models to mainstream CS is demonstrated. Ciliary beating frequency and the activity of cytochrome P450s (CYP) 1A1/1B1 were measured to assess functional impacts of CS on the tissues. Furthermore, to examine CS-induced alterations at the molecular level, gene expression profiles were generated from the tissues following exposure. A slight increase in CYP1A1/1B1 activity was observed in CS-exposed tissues compared with air-exposed tissues. A network-and transcriptomics-based systems biology approach was sufficiently robust to demonstrate CS-induced alterations of xenobiotic metabolism that were similar to those observed in the bronchial and nasal epithelial cells obtained from smokers.</p> |
| <b>Author Comments:</b>  |  |
| <b>Additional Information:</b>   |  |
| <b>Question</b>  | <b>Response</b>  |
| If this article needs to be "in-press" by a certain date to satisfy grant requirements, please indicate the date below and explain in your cover letter.           |  |
| If this article needs to be filmed by a certain date to due to author/equipment/lab availability, please indicate the date below and explain in your cover letter. |  |

**TITLE:**

Impact assessment of repeated exposure of organotypic 3D bronchial and nasal tissue culture models to whole cigarette smoke

**AUTHORS:**

Kuehn, Diana  
Biological Systems Research  
Philip Morris International R&D  
Philip Morris Products S.A.  
Neuchâtel, Switzerland  
[Diana.Kuehn@pmi.com](mailto:Diana.Kuehn@pmi.com)

Majeed, Shoaib  
Biological Systems Research  
Philip Morris International R&D  
Philip Morris Products S.A.  
Neuchâtel, Switzerland  
[Shoaib.Majeed@pmi.com](mailto:Shoaib.Majeed@pmi.com)

Guedj, Emmanuel  
Biological Systems Research  
Philip Morris International R&D  
Philip Morris Products S.A.  
Neuchâtel, Switzerland  
[Emmanuel.Guedj@pmi.com](mailto:Emmanuel.Guedj@pmi.com)

Dulize, Remi  
Biological Systems Research  
Philip Morris International R&D  
Philip Morris Products S.A.  
Neuchâtel, Switzerland  
[Remi.Dulize@pmi.com](mailto:Remi.Dulize@pmi.com)

Baumer, Karine  
Biological Systems Research  
Philip Morris International R&D  
Philip Morris Products S.A.  
Neuchâtel, Switzerland  
[Karine.Baumer@pmi.com](mailto:Karine.Baumer@pmi.com)

Iskandar, Anita  
Biological Systems Research  
Philip Morris International R&D  
Philip Morris Products S.A.  
Neuchâtel, Switzerland  
[Anita.Iskandar@pmi.com](mailto:Anita.Iskandar@pmi.com)

Boue, Stephanie  
Biological Systems Research  
Philip Morris International R&D  
Philip Morris Products S.A.  
Neuchâtel, Switzerland  
[Stephanie.Boue@pmi.com](mailto:Stephanie.Boue@pmi.com)

Martin, Florian  
Biological Systems Research  
Philip Morris International R&D  
Philip Morris Products S.A.  
Neuchâtel, Switzerland  
[Florian.Martin@pmi.com](mailto:Florian.Martin@pmi.com)

Kostadinova, Radina  
Biological Systems Research  
Philip Morris International R&D  
Philip Morris Products S.A.  
Neuchâtel, Switzerland  
[Radina.Kostadinova@pmi.com](mailto:Radina.Kostadinova@pmi.com)

Mathis, Carole  
Biological Systems Research  
Philip Morris International R&D  
Philip Morris Products S.A.  
Neuchâtel, Switzerland  
[Carole.Mathis@pmi.com](mailto:Carole.Mathis@pmi.com)

Ivanov, Nikolai V  
Biological Systems Research  
Philip Morris International R&D  
Philip Morris Products S.A.  
Neuchâtel, Switzerland  
[Nikolai.Ivanov@pmi.com](mailto:Nikolai.Ivanov@pmi.com)

Frentzel, Stefan  
Biological Systems Research  
Philip Morris International R&D  
Philip Morris Products S.A.  
Neuchâtel, Switzerland  
[Stefan.Frentzel@pmi.com](mailto:Stefan.Frentzel@pmi.com)

Hoeng, Julia  
Biological Systems Research  
Philip Morris International R&D

Philip Morris Products S.A.  
Neuchâtel, Switzerland  
[Julia.Hoeng@pmi.com](mailto:Julia.Hoeng@pmi.com)

Peitsch, Manuel C  
Biological Systems Research  
Philip Morris International R&D  
Philip Morris Products S.A.  
Neuchâtel, Switzerland  
[Manuel.Peitsch@pmi.com](mailto:Manuel.Peitsch@pmi.com)

**CORRESPONDING AUTHOR:**

Boue, Stephanie  
[Stephanie.Boue@pmi.com](mailto:Stephanie.Boue@pmi.com)  
Fax: +41 58 242 2811  
Tel: +41 58 242 2243

**KEYWORDS:**

human organotypic bronchial epithelial; 3D culture; *in vitro* exposure system; cigarette smoke; cilia beating; xenobiotic metabolism; network models; systems toxicology

**SHORT ABSTRACT:**

The aim of this protocol is to expose human organotypic 3D bronchial and nasal tissue models to mainstream cigarette smoke (CS) at the air-liquid interface. The impact of CS on the tissues is then investigated using a cytochrome P450 activity assay, a cilia beating measurement, and a systems biology approach.

**LONG ABSTRACT:**

Cigarette smoke (CS) has a major impact on lung biology and may result in the development of lung diseases such as chronic obstructive pulmonary disease or lung cancer. To understand the underlying mechanisms of disease development, it would be important to examine the impact of CS exposure directly on lung tissues. However, this approach is difficult to implement in epidemiological studies because lung tissue sampling is complex and invasive. Alternatively, tissue culture models can facilitate the assessment of exposure impacts on the lung tissue. Submerged 2D cell cultures, such as normal human bronchial epithelial (NHBE) cell cultures, have traditionally been used for this purpose. However, they cannot be exposed directly to smoke in a similar manner to the *in vivo* exposure situation. Recently developed 3D tissue culture models better reflect the *in vivo* situation because they can be cultured at the air-liquid interface (ALI). Their basal sides are immersed in the culture medium; whereas, their apical sides are exposed to air. Moreover, organotypic tissue cultures that contain different type of cells, better represent the physiology of the tissue *in vivo*. In this work, the utilization of an *in vitro* exposure system to expose human organotypic bronchial and nasal tissue models to mainstream CS is demonstrated. Ciliary beating frequency and the activity of cytochrome P450s (CYP) 1A1/1B1 were measured to assess functional impacts of CS on the tissues. Furthermore, to examine CS-induced alterations at the molecular level, gene expression profiles were generated from the tissues following exposure. A slight increase in CYP1A1/1B1 activity was observed in CS-

exposed tissues compared with air-exposed tissues. A network-and transcriptomics-based systems biology approach was sufficiently robust to demonstrate CS-induced alterations of xenobiotic metabolism that were similar to those observed in the bronchial and nasal epithelial cells obtained from smokers.

## INTRODUCTION:

Lungs are directly and constantly exposed to inhaled air that may contain diverse toxicants such as pollutants and constituents of cigarette smoke (CS). Studying the impact of exposure to those toxicants on respiratory tissues is most informative when done in a manner that resembles *in vivo* exposure. Compared with the classical 2D immersed cell cultures (*e.g.*, normal human bronchial epithelial cells (NHBE)), 3D organotypic tissue models better recapitulate the morphological, physiological, and molecular aspects of the human airway epithelium *in vivo*<sup>1,2</sup>: the 3D tissue models contain the diversity of the cell types observed *in vivo*, including differentiated epithelial cells, ciliated and non-ciliated cells, goblet cells, and basal cells. They have functional tight junctions and exhibit a mucociliary phenotype<sup>1-3</sup>. Moreover, the cultures can be grown on a permeable porous membrane, in an air-liquid interface, allowing a direct exposure to aerosol at the apical side (whereas the basolateral side is immersed in culture medium)<sup>3-5</sup>. Dvorak and colleagues reported that gene expression profiles of bronchial tissue models were similar to those obtained from human bronchial brushings<sup>3</sup>. In addition, Mathis and colleagues showed that the responses of these tissue models to CS were similar to the differences observed between bronchial epithelial cells obtained from smokers and cells obtained from non-smokers<sup>6</sup>. Finally, because the bronchial tissue models could be cultured for up to several months<sup>4,5</sup>, they could potentially be used to examine the effects of long-term exposure of test items.

Cytotoxicity assessments are common parameters measured following chemical insults or to assess the toxicity of specific compounds or mixtures. For instance, membrane integrity can be measured by a luminescent assay and allows the measurement of a dose-dependent cytotoxic effect on the cell culture<sup>7</sup>. However, to assess pathophysiological effects of compounds at subtoxic concentrations, other parameters should be measured. For example, tissue integrity determined using the transepithelial electrical resistance (TEER) assay ensures the functionality of tight junctions and monitors the disruption of the epithelial layer<sup>8,9</sup>. Ciliary beating frequency also allows the measurement of CS-related effects on respiratory tissues. A normal beating frequency for the cilia lining bordering the upper and lower respiratory tract is important to protect against airway infections<sup>10</sup>. Each of the ciliated columnar epithelial cells of the respiratory epithelium has 200-300 cilia beating at a particular frequency to eliminate infectious agents or inhaled particulate matter trapped in the mucus released by interspersed goblet cells<sup>11</sup>. CS contains chemicals that may inhibit ciliary beating<sup>12</sup>, leading to a reduced protection of the respiratory tract. This work shows that ciliary beating can be measured in organotypic tissue models. This approach allows assessment of whether epithelial cells exhibit their normal function in the organotypic tissue culture. CS also activates xenobiotic metabolism responses in the respiratory tract to metabolize tobacco smoke constituents<sup>13</sup>. The activity of the phase I xenobiotic metabolism enzymes, CYP1A1 and CYP1B1, of the tissue models can be measured. Additionally, as previously reported, global gene expression can be measured in the organotypic bronchial tissue models<sup>6,14,15</sup>. A transcriptomic data and network-based systems biology approach is leveraged to assess the impact of CS on xenobiotic metabolism<sup>15</sup>.

The methodologies used to expose organotypic 3D bronchial and nasal tissue models to mainstream CS using an *in vitro* exposure system and to measure the tissue responses to this exposure compared to fresh air exposure (control) are detailed here.

## **PROTOCOL:**

### ***1. Culture of the organotypic tissue bronchial culture model***

Note: Reconstituted tissue models were purchased as inserts that are ready to use. Alternatively, the culture could be developed from primary cells as described for example by Karp and colleagues<sup>16</sup>. Following receipt of tissues in sterile packaging, always handle the human organotypic tissues under sterile conditions.

1.1.) Add 0.7 ml of pre-warmed (37 °C) assay medium to each well of a new sterile 24-well plate under the hood.

1.2.) Remove the packaging of the tissues under the hood, and transfer the tissue culture inserts to the newly prepared 24-well plate (from step 1.1 above).

1.3.) Maintain and culture the tissues in an incubator at 37 °C (5% CO<sub>2</sub>, 90% humidity). Replace the medium every 2 days.

1.4.) During a medium change, examine the tissues under a light microscope to ensure they grow normally and are healthy (*e.g.*, without contamination).

### ***2. Cigarette smoke (CS) exposure using an *in vitro* exposure system***

2.1.) Three days prior to exposure experiments, wash the apical side of the tissue culture with 200 µl of culture medium.

2.2.) On the day of exposure, if the measurement of ciliary beating is planned before exposure, handle the tissues for ciliary beating measurement as described in section 3.

2.3.) Pre-warm the climatic chamber of the *in vitro* exposure system and the cultivation base module to 37 °C. Fill the cultivation base module with 17.5 ml of medium per row.

2.4.) Remove the tissues from the incubator and place them under the hood to transfer the tissue culture inserts from the culture plate to the cultivation base module of the *in vitro* exposure system. Additionally, cover the cultivation base module with a glass lid.

2.5.) Transfer the tissues in the climatic chamber of the *in vitro* exposure system for exposure to mainstream CS.

2.6.) If the *in vitro* exposure system is equipped with a microbalance, set-up the Quartz crystal microbalance before running the exposure to measure the real-time particle deposition of the smoke on a quartz crystal using the microbalance software.

2.6.1.) Replace the crystals in the microbalance modules connected to each row of the dilution/distribution system.

2.6.2.) Connect the microbalance module to the microbalance software. Set the scale of the measurement to zero in the software.

2.7.) Expose the tissues according to the experimental procedure (Figure 1).

Note: Prior exposure, reference cigarettes (3R4F) are conditioned between 7 and 21 days under controlled conditions at  $22 \pm 1$  °C and relative humidity of  $60 \pm 3\%$  according to ISO standard 3402 <sup>17</sup>.

2.7.1.) Generate cigarette smoke (*e.g.*, from 3R4F cigarettes) using a 30-port carousel smoking machine according to the Health Canada Intense regime: smoke the cigarettes to a standard butt length, i.e., approximately 35 mm at 55 ml puff over 2 sec, twice a minute and 8 sec pump exhaust time.

Note: If necessary, dilute the mainstream CS so that the dose is not too toxic. In results reported here, smoke was diluted to 16% (vol/vol).

2.7.2.) Use 60% humidified-air for the control samples (air-exposed).

2.7.3.) Expose the tissues for 6-7 minutes (i.e., 1 cigarette or air-exposed) in the *in vitro* exposure system

2.7.4.) Put the tissues back in the incubator at 37 °C (5% CO<sub>2</sub>, 90% humidity) for 1 hour.

2.7.5.) Repeat steps 2.7.3 and 2.7.4 three more times.

2.8.) At the end of the exposure experiment, stop the microbalance software. The software will generate a file containing all the measurements along with a graphical representation of the particle deposition.

2.9.) Transfer back the tissues from the cultivation base module to the culture plate. Place the tissues back in the incubator at 37 °C (5% CO<sub>2</sub>, 90% humidity) until the measurements for the different endpoints at the specific post-exposure time-points.

### **3. Measurement of ciliary beating**

Note. As per the experimental plan (Figure 1), record ciliary beating prior to the exposure and directly after the exposure.

3.1.1) Remove the tissue culture plates from the incubator and leave them under the hood at room temperature for 30 minutes to stabilize the cilia beating.

3.1.2) Place the tissues under the light microscope connected to the CiliaMetrix Software.

3.1.3) Record the movie and frequency (in Hertz) of the ciliary beating. Measure the frequency every 3 sec for 1 minute.

3.1.4) Return the tissues back to the incubator at 37 °C (5% CO<sub>2</sub>, 90% humidity).

#### **4. *Transepithelial electrical resistance (TEER) measurement***

Note: The measurement of TEER is conducted 3 days before and right after exposure under the hood under sterile condition using Chopstick Electrode (STX-2) connected to a voltohmmeter.

4.1) Add 200 µl of culture media to the apical surface of the human bronchial tissues.

4.2) Turn on the EVOMX machine; wash the electrode with a 70% ethanol solution.

4.3) Wash the electrode with the culture medium.

4.4) Measure the resistance ( $\Omega$ ) by inserting the electrode into the medium on the apical side of the tissue culture without touching the tissue. Repeat 5X.

4.5) After the measurements, gently remove the medium from the apical side of the tissue cultures using an aspirator.

4.6) Return the tissue cultures to the incubator at 37 °C (5% CO<sub>2</sub>, 90% humidity) for culturing.

#### **5. *Cytochrome P450 (CYP) 1A1/1B1 activity***

5.1) Before the start of the study, prepare the luciferin detection reagent by transferring the entire contents of the bottle of the appropriate reconstitution buffer to the amber bottle containing the luciferin detection reagent (according to manufacturer's instructions). Store aliquots of 2 ml at -20 °C for a maximum of 1 month.

5.2) For the 48 h post-exposure time, incubate the tissues for 48 h following CS exposure at 37 °C.

5.3) Warm the Luciferin detection reagent to room temperature

5.4) Incubate tissue inserts for 3 h or overnight with the Luciferin-CEE substrate (diluted at 1:50) in the basal culture medium.

5.5) Transfer 50 µl of culture medium from each tissue insert to a 96-well opaque white luminometer plate at room temperature.

5.6) Add 50 µl of luciferin detection reagent to each well to initiate a luminescent reaction. Incubate the plate at room temperature for 20 minutes.

5.7) Read the luminescence using a luminometer.

Note: For the luminometer, use an integration time of 0.25–1 second per well as a guideline.

## **6. RNA extraction.**

6.1. Before collecting 3D organotypic tissue inserts, prepare 1) a box with dry ice, 2) sufficient amount of blades (one per 3D insert), 3) cold PBS without calcium chloride and magnesium chloride, 4) one 25 ml glass pipet, and 5) sterile glass needles for aspiration.

6.1.1) Label tubes filled with ceramic beads for homogenizing solid cellular samples and add 700 µl of Qiazol.

6.1.2) Turn on aspiration machine.

6.1.3) Collect the plate of the 3D organotypic tissue inserts from the incubator.

6.1.4) Wash each insert on the plate 3 times with cold PBS. Between the washes, aspirate PBS with the glass needle. After the third wash, aspirate with PBS and cover plate to prevent drying of the insert.

6.1.5) For each insert from the plate, cut out the insert membrane (on which 3D tissue insert resides) until the membrane lies flat down on the blade.

6.1.6) Transfer the tissue (along with the insert membrane) from the blade to the homogenizing tube appropriately labelled and screw the lid on the tube, shake it and vortex it.

6.1.7) Freeze the sample in dry ice and store at -80 °C or continue to the extract the RNA.

Note: Prior to the extraction of RNA, label all tubes and columns according to the randomization design (if applicable). Prepare all reagents according to manufacturer's recommendations and take out samples from -80 °C freezer and thaw them on ice until they are completely defrosted.

## **6.2. Homogenization**

6.2.1) Grind samples with homogenizing instrument on 6000 Hz for 45 sec. Repeat if the samples are not properly homogenized and leave samples for 5 min at room temperature.

6.2.2) Add 140 µl of chloroform to the sample and vortex for 10-15 sec.

6.2.3) Transfer the supernatant from the homogenizing tube to a Phase lock tube and shake on a thermoshaker for 2 min at 1400 rpm and room temperature.

6.2.4) Further incubate samples for 2 min at room temperature and centrifuge samples at 12,000 x g for 15 min at 4 °C.

### 6.3. RNA precipitation, wash, suspension and purification in QIAcube.

6.3.1) Transfer the upper aqueous phase in a new 2 ml tube.

6.3.2) Load all necessary reagents in the extraction robot according to the the manufacturer protocol sheet, select the appropriate protocol, set the elution volume (30 µl) and run the extraction robot.

6.3.3) When the run is finished, remove the rotor adapters and keep elution tubes immediately at 4 °C for further analysis or at -80 °C for long term storage.

### 6.4. Quality control of the isolated RNA

6.4.1) Determine the quantity of the isolated RNA using an UV reader according to manufacturer's instructions.

6.4.2) Check the quality of RNA and the RNA integrity using microfluidic-gel-based lab-on-a-chip and an UV reader, according to the manufacturer instructions.

## 7. *Microarray workflow*

Note: The process described below focuses on the method for Affymetrix GeneChip High throughput 3'IVT Express Kit, which is used for target synthesis for hybridization on Affymetrix 3' gene expression cartridges starting from the preparation of the RNA to the use of the a complex liquid handling system (e.g., pipetting, diluting, dispensing, or integrating).

### 7.1) Preparation

7.1.1) Randomize samples to avoid batch effects. The number of samples processed by batches is from 1 to 96, including one positive (commercial human universal reference RNA) and one negative (RNase free water) control per batch.

7.1.2) Start the target synthesis using 100 ng of total RNA in 3 µl of RNase-free water. For 100 ng of total RNA, use a 16 h incubation time.

### 7.2) RNA Amplification

7.2.1) Prepare the Poly-A RNA spike-in control solution by a serial dilution of the Poly-A RNA Stock with Poly-A Control Dilution Buffer:

7.2.1.1) For dilution 1, prepare 2 µl polyA control stock in 36 µl dilution buffer.

7.2.1.2) For dilution 2, prepare 2 µl of dilution 1 in 98 µl of dilution buffer.

7.2.1.3) For dilution 3, prepare 4 µl of dilution 2 in 196 µl of dilution buffer.

7.2.1.4) For dilution 4, prepare 20 µl of dilution 3 in 180 µl of dilution buffer.

7.2.2) Dilute the RNA in RNase free water to get a concentration of 33.3 ng/µl.

7.2.3) Add 2 µl of the polyA control solution to the 3 µl of total RNA sample directly in a 96 well plate. This step is performed by the liquid handling system.

7.2.4) Prepare the liquid handling system and target synthesis. Place the plates on the robot. Place all the required reagents and labware on the deck. The robot will start the procedure by preparing the appropriate mastermixes and incubate the samples in the automated remote controlled PCR block.

7.2.5) First Quality Control Check: Control Of The Amplification Process

7.2.5.1) If the quality of aRNA is acceptable, perform the fragmentation step by adding to each sample 8 µl of fragmentation 5X buffer (This step is performed by the liquid handling system). Otherwise, perform the previous step again starting from the RNA. Use fragmented aRNA immediately or store undiluted and fragmented aRNA at -20 °C (or -70 °C for longer-term storage).

7.2.5.2) Perform a second Quality Control analysis by picking up randomly 12 samples in the plate and transfer 1 µl on the microfluidics gel based system to check the efficiency of the fragmentation.

7.3) Hybridization procedure

7.3.1) Scan the chip barcodes and register each sample in the manufacturer's software according to the instructions.

7.3.2) Prepare the hybridization mix as follows for a single reaction and add it to 33 µl of the fragmented and labelled aRNA: 4.2 µl of control oligonucleotide B2 (3 nM), 12.5 µl of 20x eukaryotic hybridization controls, 25 µl of 100% DMSO, 125 µl of 2x hybridization buffer and 50 µl of H<sub>2</sub>O for a final volume of 216.7 µl.

Note: Hybridize, wash and scan positive and negative controls before processing the samples.

7.3.3) Pre-wet the array with 200 µl of pre-Hybridization mix contained in the Hybridization Wash and Stain kit.

7.3.4) Place the chip in the Hybridization Oven 645 set at 45 °C and 60 RPM for 10 min.

7.3.5) In the meantime, denature the plate (containing the final cocktail hybridization mix) in a PCR block at 99 °C for 5 min and 45 °C for 5 min.

7.3.6) Remove the pre-Hybridization mix from the array and replace it with 200 µl of the hybridization cocktail target (one sample per chip).

7.3.7) Place the array into a GeneChip Hybridization Oven 645 set at 45 °C for 16 h (overnight) with a rotation speed of 60 RPM.

#### 7.4) Washing and staining

7.4.1) Run “Fluidics” from the software menu bar. In the Fluidics dialog box, select the module of interest (1 - 4), then select the Prime\_450 program to all modules. Place the tubing for Wash Buffer A in a bottle (400 ml) and for Wash Buffer B in a bottle (200 ml), as well as for milliQ Water in a bottle (500 ml).

7.4.2) Subsequently, follow the LCD screen instructions. Lift up the needles and place 600 µl stain cocktail 1 (SAPE Solution Mix) and 600 µl stain cocktail 2 (Antibody Solution Mix) containing microcentrifuge tubes at positions #1 and #2, and 900 µl Array Holding buffer solution at position #3.

7.4.3) After the overnight incubation in the oven, aspirate the cocktail from the chip and fill the microarray with 250 µl Wash Buffer A. Assign the right chip to each module, select the FS450-001 protocol and run each module, following instructions on screen. This process lasts 90 min.

7.4.4) Once the LCD screen indicates “Eject Cartridge” message, remove the chip and inspect if there are any bubbles. If bubbles are present, fill the array entirely with the Array holding buffer. Apply stickers onto the septa to avoid any leaks in the scanner and clean the microarray window prior to loading in the Scanner.

#### 7.5) Scanning.

7.5.1) Warm up the scanner. Load the chip into the autoloader of the scanner and start scanning.

Note: After ~12 min per chip, a .CEL file per chip is generated.

7.5.2) Check the image and align the grid (if necessary) to the spot to identify the probe cells.

Note: The dataset has been submitted to Arrayexpress (Accession code = E-MTAB-1721).

### 8. *Network-based systems biology analysis for an impact assessment*

#### 8.1) Microarray data processing.

Note: Data processing and scoring methods were implemented using the R statistical environment version 2.14.

8.1.1) Open an R <sup>18</sup> session and load the affy <sup>19</sup>, gcrma, and affyPLM packages installed by running the commands: `library(affy) > library(gcrma) > library(affyPLM)`

8.1.2) Read raw data files running the command: `data.affybatch<-ReadAffy("path to the folder where are stored the CEL files")`

8.1.3) Subtract the background correction and quantile normale to generate probe set expression values using the gcrma package, by running the command: `eset.norm<-gcrma(data.affybatch)`

8.2) Quality control.

8.2.1) Generate RNA degradation plots with the command: `deg<-AffyRNAdeg(data.affybatch)`

8.2.2) Extract the coefficient of the RNA degradation slope running the command: `slope=deg$slope`

8.2.3) Plot the slope coefficient and identify possible outliers.

8.2.4) Generate NUSE and RLE plots running the following commands: `Pset<-fitPLM(data.affybatch) > RLE(Pset) > NUSE(Pset)`.

8.2.5) Identify if some of the boxplots generated are outliers.

8.2.5.1) Consider an array an outlier if at least 2 of the 3 QC metrics defined below deviate from the other arrays: if `deg$slope` is different from the average `deg$slope`; if the upper quartile in the NUSE plot falls below 0.95 or the lower quartile above 1.05, i.e., if the boxplot is entirely above 1.05 or entirely below 0.95.; or if the median of the RLE distribution is greater than 0.1 or smaller than -0.1.

8.2.6) If an array is identified as an outlier, then discard, and start again from step 8.1.2.

8.2.7) Fit an overall linear model to the data for the specific contrasts of interest (i.e., the comparisons of “treated” and “control” conditions) generating raw *P* values for each probe set on the microarray, which can be further adjusted using the Benjamini-Hochberg procedure of the Limma package. Select a probeset per gene to keep as representative of the gene for further analyses as described in <sup>20</sup>.

Note: A blocking factor (the exposure plate) from the experiment design was accounted in the model for data processing.

8.3) Network-based analysis.

Note: The method as implemented here is described in detail in Martin *et al.* (in revision in BMC bioinformatics).

8.3.1) For each pairwise comparison of interest, start from the computed (log2-) fold changes (treatment vs. control) for each gene under the network (from step 8.2).

8.3.2) Compute the signed Laplacian matrix  $L$  of the network defined by  $L(i,j) = -\text{sign}(i \sim j)w(i,j)$  if there is an edge of weight  $w(i,j)$  between node  $i$  and  $j$ ,  $L(i,j) = \text{deg}(i)$  is the weighted degree of  $i$  and  $L(i,j) = 0$  else. The weight  $w(i,j)$  are equal to 1 if  $i$  and  $j$  are in the backbone and  $w(i,j) = 1/n$  if  $i$  is a backbone node and  $j$  is one of its  $n$  neighbors in the transcript layer.

8.3.3) Compute scores for the backbone by  $f = L_3^{-1}L_2^T x$  where  $L_3$  is the sub-matrix of  $L$  to the backbone nodes and  $L_2$  is the sub-matrix of  $L$  whose rows correspond to the transcriptional layer nodes and column to the backbone nodes

8.3.4) Compute the signed Laplacian,  $Q$ , of the network defined by the backbone network where all the edge signs are reversed.

8.3.5) Compute the NPA score by  $\text{NPA} = f^T Q f$ .

8.3.6) Compute the confidence interval, the backbone edge permutation p-value and the transcript layer permutation p-value.

Note: In addition to the confidence intervals of the NPA scores, which account for the experimental error (e.g., the biological variation between samples in an experimental group), companion statistics were derived to describe the specificity of the NPA score to the biology described in the network. Because NPA is a quadratic form of the fold changes, its variance can be computed based on the fold-change estimated variances. A confidence interval is subsequently derived using the central limit theorem. Two permutation tests were implemented<sup>21</sup> whereby first, to assesses if the results were specific to the underlying evidence (i.e., gene fold-changes) in the model, leading to a permutation P-value (denoted by \*O in the figures when  $P\text{-value} < 0.05$ ). Second, to assess whether the “cause-and-effect” layer of the network significantly contributed to the amplitude of the network perturbation (denoted by K\* in the figures when  $P\text{-value} < 0.05$ ).

8.3.7) Consider the network as impacted by the treatment if the confidence interval does not contain zero AND the two permutation p-values  $< 0.05$ .

8.3.8) Compute the leading nodes which are defined as the key nodes in the backbone contributing up to 80% of the NPA score.

## **REPRESENTATIVE RESULTS:**

In results described below, the organotypic tissues were primary human epithelial cells isolated from healthy, non-smoking, Caucasian donors and were reconstituted using fibroblasts<sup>15</sup>.

### **3D bronchial and nasal tissue models**

*In vitro* bronchial and nasal organotypic models resemble at the cellular level the human respiratory tract epithelium (Figure 2).

### **CS exposure**

Organotypic bronchial and nasal tissue models can be repeatedly exposed to mainstream CS at the air-liquid interface. The smoke exposure experimental procedure used for the results illustrated here is depicted in Figure 1.

### **Recording of ciliary beating**

Cilia beating was recorded in the air-exposed tissues as illustrated in the videos. CS exposure was associated with the desynchronization of the ciliary beating: the stronger peak observed around 4 Hz in the sham exposed and before exposure is not observed any longer after CS exposure (Figure 3). This desynchronization would make the cilia beating less efficient to remove mucus and infectious agents<sup>22</sup>.

### **Measurement of TEER and CYP1A1/1B1 activity**

TEER was measured 48 hours after the last exposure to ensure the tissue is still functional. CYP1A1/1B1 activity was also measured 48 h after end of exposure as illustrated in Figure 1. The TEER values in the CS-exposed tissues were not significantly different as compared to the air-exposed tissues confirming that there is no major cytotoxic effect of smoke at this concentration. At the 48 h post-exposure, CYP1A1/1B1 activity of the tissues was slightly increased, indicating a modest increase of tissue defense mechanism following the exposure (Figure 4).

### **Gene expression profiles and network-based systems biology approach to study the impact of CS exposure on the alteration of xenobiotic metabolism**

Tissues were collected at 48 h post-exposure time points. Subsequently, microarray analysis was conducted to generate gene expression profiles of the CS- and air-exposed tissues. Impact of the CS exposure on xenobiotic metabolism was investigated using a network-based systems biology approach leveraged from the gene-expression profiles and as reported earlier<sup>15</sup>. Using a network-based systems biology approach shows that CS exposure impacts at the level of backbone nodes in the Xenobiotic Metabolism network model were nicely correlated between the *in vitro* and *in vivo* datasets (Figure 5). In contrast, at the level of each individual gene-expression changes, poor correlations were observed between the *in vitro* (CS-exposed vs. air-exposed) and *in vivo* (smokers vs. nonsmokers).

### **Figure 1**

Schematic procedure of the repeated exposure of CS to the organotypic bronchial tissue models. Abbreviations: CYP, cytochrome P450s; CS, cigarette smoke; TEER, transepithelial electrical resistance.

### **Figure 2**

Organotypic bronchial and nasal epithelial tissue culture models. Cartoon illustrating the bronchial (A) and nasal (B) tissue culture insert at the air-liquid interface. The *in vitro* models contained ciliated cells shown in the apical layer of the Hematoxylin & Eosin stained cells (C for bronchial, D for nasal) as reported previously<sup>15</sup>. The models were co-cultured with fibroblasts that are important for the growth and differentiation of epithelial cells (indicated by arrows). Staining of airway lineage markers: p63 (E for bronchial, F for nasal) and Muc5AC (G for bronchial, H for nasal) are shown as reported previously<sup>15</sup>.

### Figure 3 – Cilia Beating Frequency

Cilia beating frequency (CBF) was measured in air-exposed and in the culture before and after exposure. Decreased CBF was seen after CS exposure (representative results from two insert are shown as replicate 1 (R1) and replicate 2 (R2)).

### Figure 4

Measurement of CYP1A1/CYP1B1 activity and TEER. Left pannels indicate the CYP1A1/CYP1B1 activity in the bronchial (A) and nasal (B) tissue models. Right panels indicate the TEER measurement in the bronchial (C) and nasal (D) tissue models. Means  $\pm$  SD are shown. Abbreviations: CS, cigarette smoke; CYP, cytochrome P450; TEER, transepithelial electrical resistance; RLU, relative luminescence unit.

### Figure 5

Network-based systems biology approach for the impact assessment of CS exposure in the context of xenobiotic metabolism. The changes of gene expressions levels were used to compute the activation of backbone node of the Xenobiotic Metabolism network model (A) as reported in a previous publication<sup>15</sup>. The figure on the right illustrates the concept of the quantification of the backbone nodes, also known as “differential network backbone value,” using the NPA approach. The blue ovals represent the activity of the backbone nodes (i.e., the functional layer) and the green balls represent the expression of genes (i.e., the transcriptional layer). Impacts of CS exposure in organotypic bronchial tissues (*in vitro*, CS-exposed vs. air-exposed) at the 48 h of postexposure were compared to those of smoking on human bronchial epithelial collected by bronchoscopy and nasal epithelial by burshing the inferior turbinate (GSE16008) (*in vivo*, smokers vs. nonsmokers) (B). Insets, correlation of the gene expression changes between the *in vitro* and *in vivo* datasets. Abbreviations: CS, cigarette smoke; NPA, network perturbation amplitude

## DISCUSSION:

Here, we have demonstrated the applicability of human organotypic bronchial and nasal tissue models to assess the impact of repeated CS exposure. As an alternative to animal testing, a number of exposure systems were developed for toxicological assessments of aerosol exposure *in vitro* (e.g., Vitrocell, Cultex, ALICE, etc.). These exposure modules can also be utilized for a toxicological assessment of airborne pollutants, airborne particles, nanoparticles, etc. One of the advantages of the Vitrocell system is that it can accomodate up to 48 different samples simultaneously, allowing for larger scale experiments and lower variability between treatments. For every aerosol exposure *in vitro*, the risk of tissue culture contamination remains a major risk whose mitigation demands a careful handling of the tissue cultures throughout the experiments.

Measuring particle deposition in real time on the microbalance during the exposure experiment allows to monitor that the CS doses generated from the exposure system are conforming to the expectations. To ensure the accuracy of the measured particle deposition, setting-up the online measurement correctly before the exposure is critical, e.g., setting up the scale to 0. Additionally, because of the difference between the areas of the microbalance (cm<sup>2</sup>) and the tissue culture insert (0.33 cm<sup>2</sup>), we adjusted the final calculation to the area of the culture insert: only 33% of the deposition on the microbalance reflect the actual deposition in the culture insert.

Measurement of TEER to ascertain tight-junction barrier functionality and to assess disruption of the epithelial layer is a relatively easy procedure to implement, which we reported here.

However, because the bronchial and nasal tissue models contain mucus-producing interspersed goblet cells, apical washing needs to be performed before the TEER measurement. The apical washing is critical because the presence of the mucus layer and the variability of its thickness can bias the measurement of TEER, interfering with the impact of CS exposure. This notion is in agreement with what was reported by Hilgendorf and colleagues, in which the permeability of Caco-2 cells was affected by the co-culturing with the mucus-producing goblet cell line HT29<sup>23</sup>. The mucus needs to be washed off prior to TEER measurement, because apical washing right before the exposure may interfere with the tissue responses to CS. Therefore, the measurement is performed three days before exposure, and not right before exposure.

We showed that CYP1A1/CYP1B1 activity could be measured from the organotypic culture models following CS exposure although the activity was only modestly increased by CS. This weak signal can be amplified by a longer incubation of the CYP1A1/1B1 substrate (i.e., luciferin-CEE), for example for 24 hours (data not shown). One of the limitations of the CYP activity measurement in the present work is the absence of normalization to the CYP protein level or to the cell count, which could be taken into consideration for future studies to ensure that the alteration on the enzyme activity is not influenced by the alteration of either the protein level or the cell count.

We reported that CS exposure inhibited the ciliary beating in both the nasal and bronchial tissue models. Similar observations were done in diverse mammalian and non-mammalian models<sup>12</sup>. For ciliary beating measurement, ensuring that the tissues are handled and treated in a similar manner is critical, for example if medium change is implemented, it should be applied for all samples. Sutto and colleagues reported that pH affected the mammalian ciliary beating frequency<sup>24</sup>. Thus, when comparing beating frequencies between cells treated with different compounds/mixtures, pH adjustment should be considered to minimize the variability of ciliary beating measurement. Moreover, the temperature at which the measurement is conducted is also critical as the frequency of ciliary beating drops with decreasing temperature. To minimize the variability due to these changes, a stage-top incubator, equipped with temperature, CO<sub>2</sub>, and humidity control was used in this study. Despite this, we observed that the ciliary beating frequencies in the bronchial tissues after CS exposure were highly variable (i.e., increase in one insert and decrease in the other insert), suggesting that the ciliary beating is highly disturbed right after exposure. In contrast, we observed the absence of peak in the ciliary beating frequencies in the nasal tissue after CS exposure, suggesting that the response of the nasal tissue is more sensitive and consistent. This is in agreement with a previous publication showing that the nasal tissue has a lower capacity to detoxify as compared with the bronchus<sup>25</sup>.

Finally, we showed that gene expression profiling from the organotypic bronchial and nasal tissue models exposed to CS could demonstrate an impact of CS on xenobiotic metabolism. Interestingly, the observed alteration in xenobiotic metabolism in the organotypic bronchial and nasal *in vitro* models exposed to CS resemble that of the *in vivo* situation in smokers as discussed in greater detail in a previous publication<sup>15</sup>. For gene expression analyses, using the robotic instrument makes a high-throughput analysis possible. Moreover, automatic robotic handling

further increases the consistency and accuracy of the gene expression results. Nonetheless, fast collection of the tissue samples was critical to avoid RNA degradation during the RNA extraction. The RNA processing and transcriptomic approaches described here can also be applied to *in vivo* tissue samples.

#### ACKNOWLEDGMENTS:

The authors would like to thank Maurice Smith and Marja Talikka for their review of the manuscript.

#### DISCLOSURES:

This study was funded by Philip Morris International.

#### REFERENCES :

- 1 Pezzulo, A. A. *et al.* The air-liquid interface and use of primary cell cultures are important to recapitulate the transcriptional profile of *in vivo* airway epithelia. *American Journal of Physiology - Lung Cellular and Molecular Physiology*. **300**, L25-L31, doi: 10.1152/ajplung.00256.2010 (2011).
- 2 Pampaloni, F., Reynaud, E. G. & Stelzer, E. H. The third dimension bridges the gap between cell culture and live tissue. *Nature Reviews Molecular Cell Biology*. **8**, 839-845 (2007).
- 3 Dvorak, A., Tilley, A. E., Shaykhiev, R., Wang, R. & Crystal, R. G. Do airway epithelium air-liquid cultures represent the *in vivo* airway epithelium transcriptome? *American Journal Of Respiratory Cell And Molecular Biology*. **44**, 465 (2011).
- 4 Wiszniewski, L. *et al.* Long-term cultures of polarized airway epithelial cells from patients with cystic fibrosis. *American Journal of Respiratory Cell and Molecular Biology*. **34**, 39-48 (2006).
- 5 Balharry, D., Sexton, K. & BéruBé, K. A. An *in vitro* approach to assess the toxicity of inhaled tobacco smoke components: nicotine, cadmium, formaldehyde and urethane. *Toxicology*. **244**, 66-76 (2008).
- 6 Mathis, C. *et al.* Human bronchial epithelial cells exposed *in vitro* to cigarette smoke at the air-liquid interface resemble bronchial epithelium from human smokers. *Am J Physiol Lung Cell Mol Physiol*. **304**, L489-503, doi: 10.1152/ajplung.00181.2012 (2013).
- 7 Cho, M.-H. *et al.* A bioluminescent cytotoxicity assay for assessment of membrane integrity using a proteolytic biomarker. *Toxicology in Vitro*. **22**, 1099-1106 (2008).
- 8 Stewart, C. E., Torr, E. E., Mohd Jamili, N. H., Bosquillon, C. & Sayers, I. Evaluation of Differentiated Human Bronchial Epithelial Cell Culture Systems for Asthma Research. *Journal of Allergy*. **2012**, 11, doi: 10.1155/2012/943982 (2012).
- 9 Blume, L. F., Denker, M., Gieseler, F. & Kunze, T. Temperature corrected transepithelial electrical resistance (TEER) measurement to quantify rapid changes in paracellular permeability. *Pharmazie*. **65**, 19-24 (2010).
- 10 Chhin, B. *et al.* Ciliary beating recovery in deficient human airway epithelial cells after lentivirus *ex vivo* gene therapy. *PLoS Genetics*. **5**, e1000422, doi: 10.1371/journal.pgen.1000422 (2009).
- 11 Jiao, J., Meng, N., Wang, H. & Zhang, L. Comparison of human nasal epithelial cells grown as explant outgrowth cultures or dissociated tissue cultures *in vitro*. *Front Med*. **7**, 486-491, doi: 10.1007/s11684-013-0287-x (2013).

- 12 Talbot, P. In vitro assessment of reproductive toxicity of tobacco smoke and its constituents. *Birth Defects Research. Part C, Embryo Today : Reviews*. **84**, 61-72, doi: 10.1002/bdrc.20120 (2008).
- 13 Port, J. L. *et al.* Tobacco smoke induces CYP1B1 in the aerodigestive tract. *Carcinogenesis*. **25**, 2275-2281, doi: 10.1093/carcin/bgh243 (2004).
- 14 Hoeng, J. *et al.* A network-based approach to quantifying the impact of biologically active substances. *Drug Discov Today*. **17**, 413-418, doi: 10.1016/j.drudis.2011.11.008 (2012).
- 15 Iskandar, A. R. *et al.* Systems approaches evaluating the perturbation of xenobiotic metabolism in response to cigarette smoke exposure in nasal and bronchial tissues. *Biomed Res Int*. **2013**, 512086, doi: 10.1155/2013/512086 (2013).
- 16 Karp, P. H. *et al.* An in vitro model of differentiated human airway epithelia. Methods for establishing primary cultures. *Methods in Molecular Biology*. **188**, 115-137, doi: 10.1385/1-59259-185-X:115 (2002).
- 17 International Organization for Standardization. ISO 3402: 1999 - Tobacco and tobacco products -- Atmosphere for conditioning and testing. *4th Edition* (2010).
- 18 The R Core Team. R: A Language and Environment for Statistical Computing. <http://www.r-project.org/> (2013).
- 19 Gautier, L., Moller, M., Friis-Hansen, L. & Knudsen, S. Alternative mapping of probes to genes for Affymetrix chips. *BMC Bioinformatics*. **5**, 111, doi: 10.1186/1471-2105-5-111 (2004).
- 20 Hermida, L. *et al.* Confero: an integrated contrast data and gene set platform for computational analysis and biological interpretation of omics data. *BMC Genomics*. **14**, 514, doi: 10.1186/1471-2164-14-514 (2013).
- 21 Thomson, T. M. *et al.* Quantitative assessment of biological impact using transcriptomic data and mechanistic network models. *Toxicology And Applied Pharmacology*. **272**, 863-878, doi: 10.1016/j.taap.2013.07.007 (2013).
- 22 Teff, Z., Priel, Z. & Gheber, L. A. The forces applied by cilia depend linearly on their frequency due to constant geometry of the effective stroke. *Biophysical Journal*. **94**, 298-305, doi: 10.1529/biophysj.107.111724 (2008).
- 23 Hilgendorf, C. *et al.* Caco-2 versus Caco-2/HT29-MTX co-cultured cell lines: permeabilities via diffusion, inside- and outside-directed carrier-mediated transport. *J Pharm Sci*. **89**, 63-75, doi: 10.1002/(sici)1520-6017(200001)89 (2000).
- 24 Sutto, Z., Conner, G. E. & Salathe, M. Regulation of human airway ciliary beat frequency by intracellular pH. *The Journal of Physiology*. **560**, 519-532, doi: 10.1113/jphysiol.2004.068171 (2004).
- 25 Zhang, X. *et al.* Similarities and differences between smoking-related gene expression in nasal and bronchial epithelium. *Physiological Genomics*. **41**, 1-8, doi: 10.1152/physiolgenomics.00167.2009 (2010).

6-7 mins in Smoking Machine,

Tissue  $\square$  In the Incubator, Unexposed

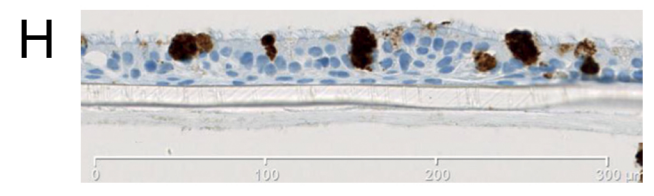
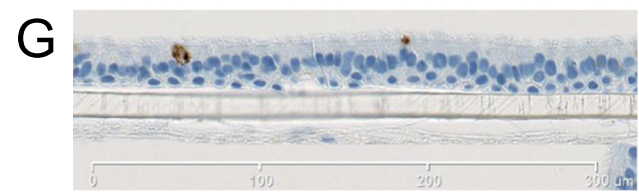
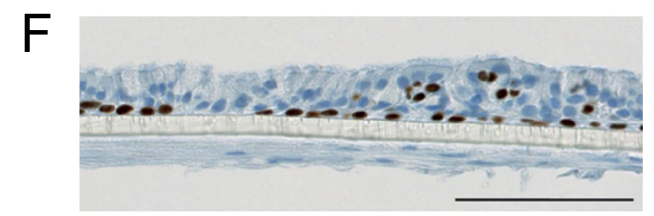
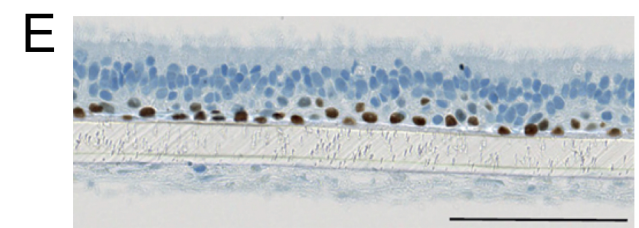
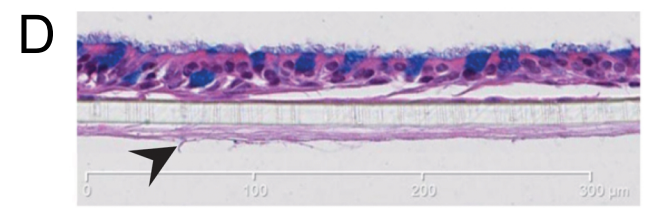
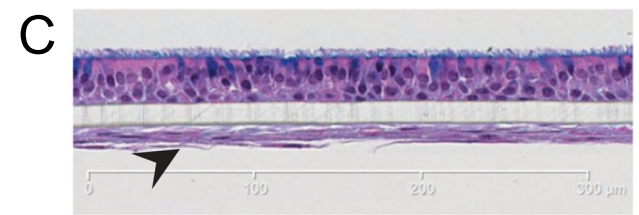
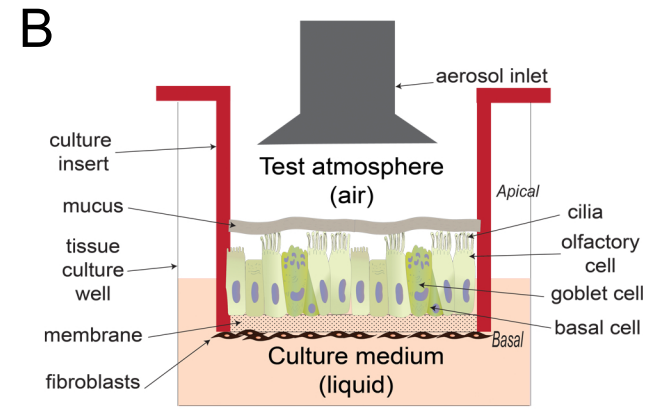
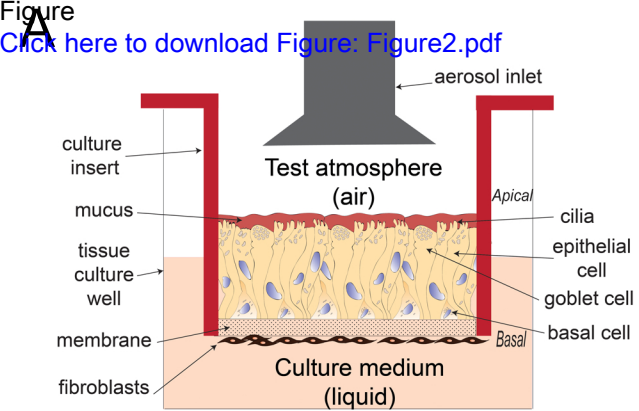
TEER Measurements x

## CYP Activity Measurements x

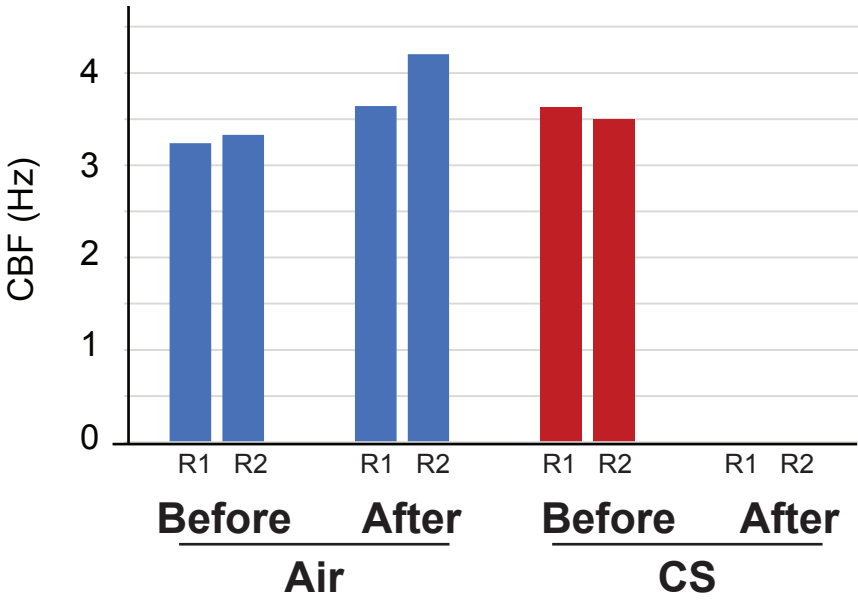
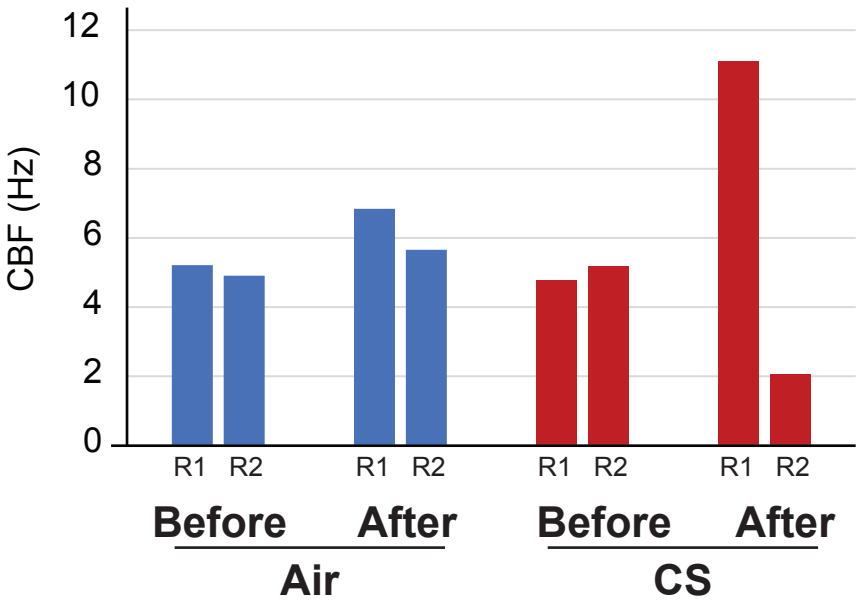
| Cilia Beating Analysis | x | x |
|------------------------|---|---|
|------------------------|---|---|

## RNA Extraction for Microarray Analysis

Figure  
[Click here to download Figure: Figure2.pdf](#)

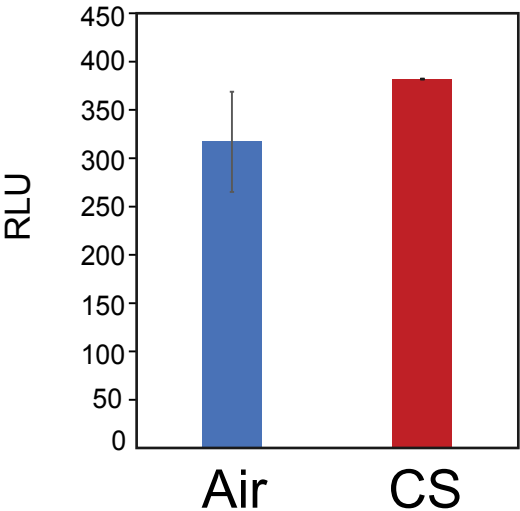


### CBF Before and After CS Exposure

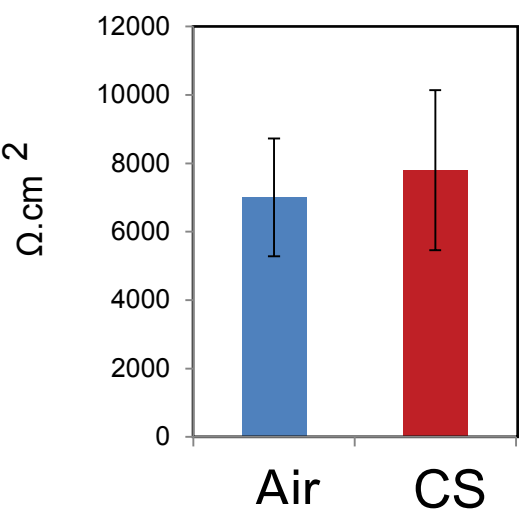


**Human Organotypic  
Bronchial Tissue Model**

**A** CYP1A1/CYP1B1 Activity  
at 48 h Postexposure

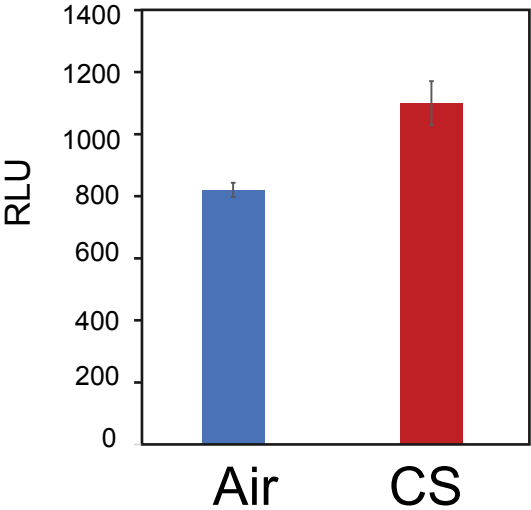


**C** TEER  
at 48 h Postexposure

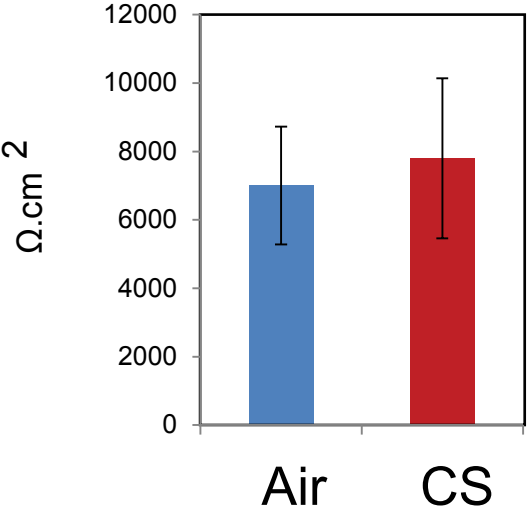


**Human Organotypic  
Nasal Tissue Model**

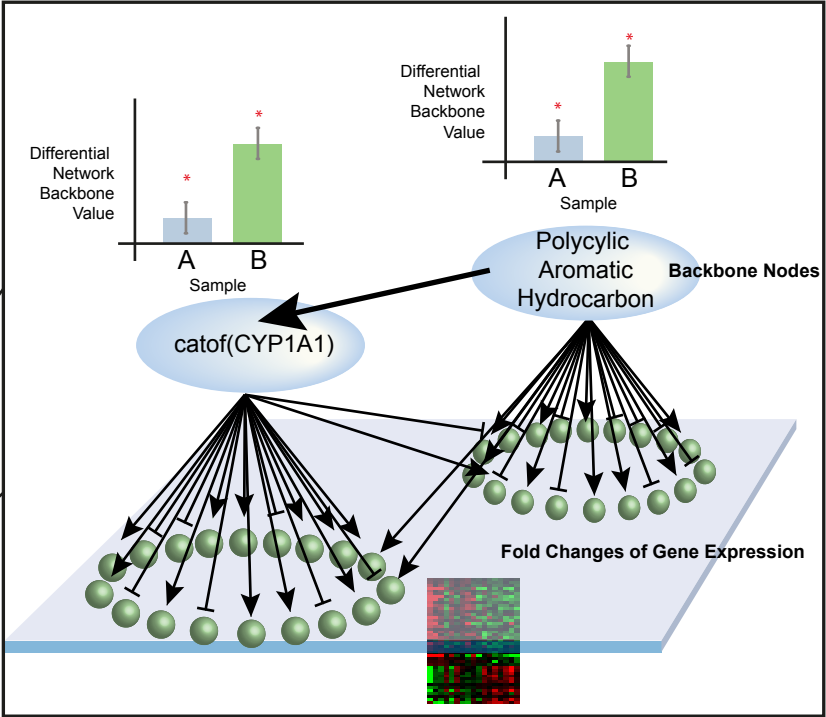
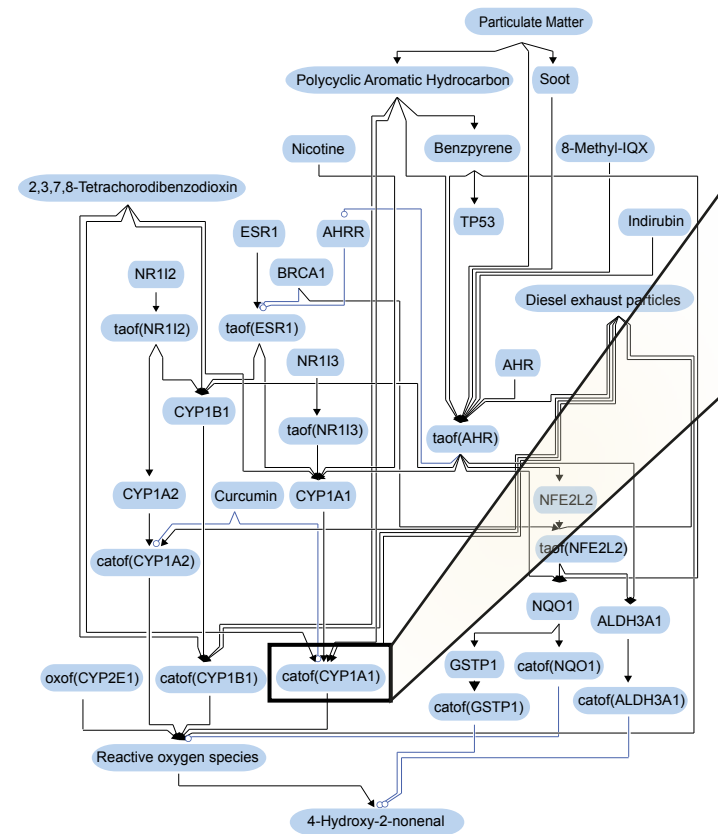
**B**



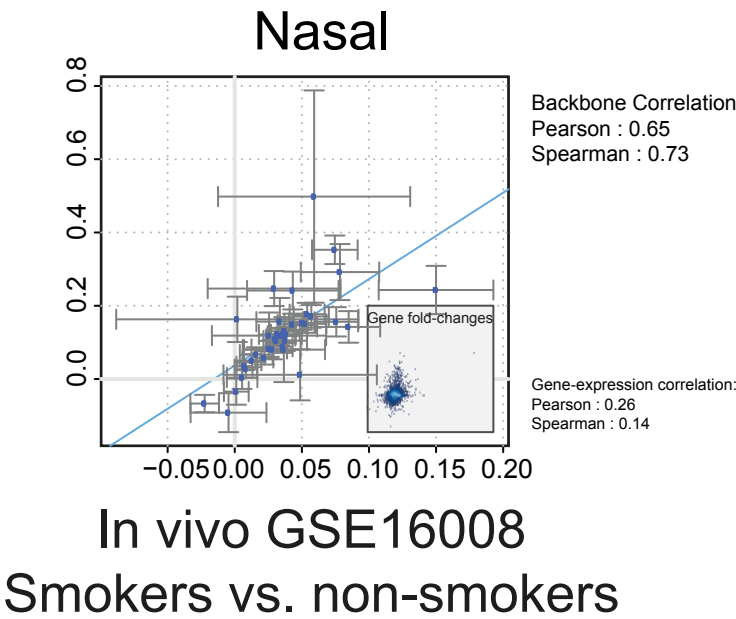
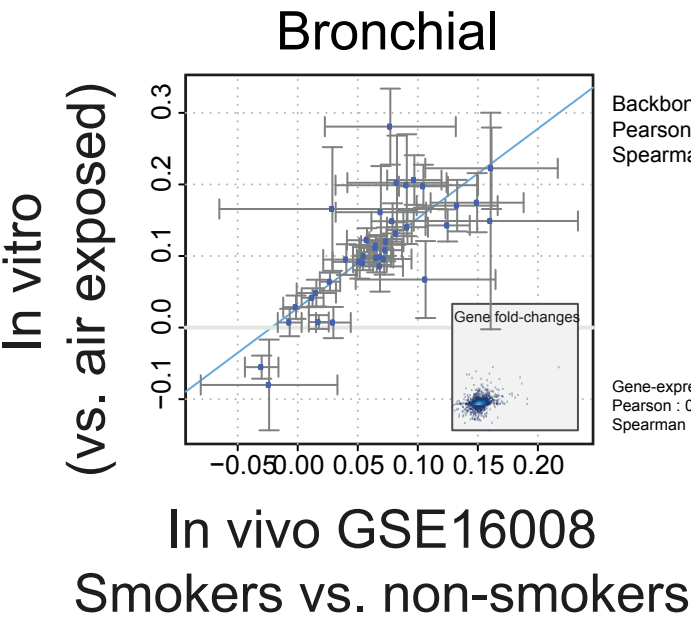
**D**



# Xenobiotic Metabolism Network



## B Activation of Each Node in the Xenobiotic Metabolism Network Model (Differential Network Backbone Value) at 48 h Postexposure



| Name of Material/ Equipment                         | Company                              |
|---|--------------------------------------|
| MucilAir-human fibroblasts-bronchia                 | Epithelix Sárl, Geneva, Switzerland  |
| MucilAir Culture Medium                             | Epithelix Sárl, Geneva, Switzerland  |
| VITROCELL   | VITROCELL systems GmbH, Waldkir      |
| 3R4F reference cigarette                            | University of Kentucky               |
| 30-port carousel smoking machine SM2000             | Philip Morris, Int.                  |
| CiliaMetrix camera and software                     | La Haute École de Gestion (HESGE), ( |
| Leica DMIL microscope                               | Leica, Heerbrugg, Switzerland        |
| LED light source                                    | Titan Tool Supplies, Buffalo, NY     |
| Chopstick Electrode STX-2                           | World Precision Instruments          |
| EVOMXTM Epithelial Voltohmmeter                     | World Precision Instruments          |
| Luciferin Detection Reagent                         |                                      |
| MagNA Lyser Instrument                              | Roche                                |
| chloroform  | Sigma-Aldrich                        |
| QIAcube   | Qiagen                               |
| NanoDrop  | Thermo Scientific                    |
| Agilent 2100 Bioanalyzer                            | Agilent                              |
| Affymetrix GeneChip High throughput 3'IVT Express l | Affymetrix                           |
| Scanner 3000 7G                                     | Affymetrix                           |

**Catalog Number****Comments/Description**

<http://www.epithelix.com/content/view/122/19/lang,en/>

<http://www.epithelix.com/content/view/84/16/lang,en/>

[http://www.vitrocell.com/index.php?Nav\\_Nummer=2&R=](http://www.vitrocell.com/index.php?Nav_Nummer=2&R=)

<http://www2.ca.uky.edu/refcig/>

Geneva, Switzerland

<http://www.wpiinc.com/products/physiology/stx2-chopstick-electrode-set-for-evom2/>

<http://www.wpiinc.com/products/physiology/evom2-evom2-epithelial-volttohmmeter-for-teer/>

<http://www.roche.com/products/product-details.htm?region=us&type=product&id=66>

<http://www.sigmaaldrich.com/catalog/product/sial/288306?lang=en&region=>

9001882

<http://www.nanodrop.com/>

<http://www.genomics.agilent.com/en/Bioanalyzer-System/2100-Bioanalyzer-Instruments/?cid=AG-PT-106>

[http://www.affymetrix.com/catalog/prod370001/AFFY/High-Throughput-\(HT\)-Whole-Transcript-\(WT\)-Kit](http://www.affymetrix.com/catalog/prod370001/AFFY/High-Throughput-(HT)-Whole-Transcript-(WT)-Kit)

<http://www.affymetrix.com/catalog/131503/AFFY/Scanner-3000-7G>



1 Alewife Center #200  
Cambridge, MA 02140  
tel. 617.945.9051  
www.jove.com

## ARTICLE AND VIDEO LICENSE AGREEMENT

Title of Article:

Impact assessment of repeated exposure of organophosphorus 3D bronchial and nasal  
tissue culture models to whole cigarette smoke

Author(s):

Kuehn, Majeed, Guedj, Dulze, Baumer, Iskandar, Bore,  
Ivanov, Fehz, Hoang, Peitsch

Item 1 (check one box): The Author elects to have the Materials be made available (as described at

<http://www.jove.com/publish>) via: ☐ Standard Access ☒ Open Access

Item 2 (check one box):



The Author is NOT a United States government employee.



The Author is a United States government employee and the Materials were prepared in the course of his or her duties as a United States government employee.



The Author is a United States government employee but the Materials were NOT prepared in the course of his or her duties as a United States government employee.

### ARTICLE AND VIDEO LICENSE AGREEMENT

1. **Defined Terms.** As used in this Article and Video License Agreement, the following terms shall have the following meanings: "**Agreement**" means this Article and Video License Agreement; "**Article**" means the article specified on the last page of this Agreement, including any associated materials such as texts, figures, tables, artwork, abstracts, or summaries contained therein; "**Author**" means the author who is a signatory to this Agreement; "**Collective Work**" means a work, such as a periodical issue, anthology or encyclopedia, in which the Materials in their entirety in unmodified form, along with a number of other contributions, constituting separate and independent works in themselves, are assembled into a collective whole; "**CRC License**" means the Creative Commons Attribution-Non Commercial-No Derivs 3.0 Unported Agreement, the terms and conditions of which can be found at: <http://creativecommons.org/licenses/by-nc-nd/3.0/legalcode>; "**Derivative Work**" means a work based upon the Materials or upon the Materials and other pre-existing works, such as a translation, musical arrangement, dramatization, fictionalization, motion picture version, sound recording, art reproduction, abridgment, condensation, or any other form in which the Materials may be recast, transformed, or adapted; "**Institution**" means the institution, listed on the last page of this Agreement, by which the Author was employed at the time of the creation of the Materials; "**JOVE**" means MyJove Corporation, a Massachusetts corporation and the publisher of *The Journal of Visualized Experiments*; "**Materials**" means the Article and / or the Video; "**Parties**" means the Author and JOVE; "**Video**" means any video(s) made by the Author, alone or in conjunction with any other parties, or by JOVE or its affiliates or agents, individually or in collaboration with the Author or any other parties, incorporating all or any portion of the Article, and in which the Author may or may not appear.

2. **Background.** The Author, who is the author of the Article, in order to ensure the dissemination and protection of the Article, desires to have the JOVE publish the Article and create and transmit videos based on the Article. In furtherance of such goals, the Parties desire to memorialize in this Agreement the respective rights of each Party in and to the Article and the Video.

3. **Grant of Rights in Article.** In consideration of JOVE agreeing to publish the Article, the Author hereby grants to JOVE, subject to **Sections 4 and 7** below, the exclusive, royalty-free, perpetual (for the full term of copyright in the Article, including any extensions thereto) license (a) to publish, reproduce, distribute, display and store the Article in all forms, formats and media whether now known or hereafter developed (including without limitation in print, digital and electronic form) throughout the world, (b) to translate the Article into other languages, create adaptations, summaries or extracts of the Article or other Derivative Works (including, without limitation, the Video) or Collective Works based on all or any portion of the Article and exercise all of the rights set forth in (a) above in such translations, adaptations, summaries, extracts, Derivative Works or Collective Works and (c) to license others to do any or all of the above. The foregoing rights may be exercised in all media and formats, whether now known or hereafter devised, and include the right to make such modifications as are technically necessary to exercise the rights in other media and formats. If the "Open Access" box has been checked in **Item 1** above, JOVE and the Author hereby grant to the public all such rights in the Article as provided in, but subject to all limitations and requirements set forth in, the CRC License.

## ARTICLE AND VIDEO LICENSE AGREEMENT

**4. Retention of Rights in Article.** Notwithstanding the exclusive license granted to JoVE in **Section 3** above, the Author shall, with respect to the Article, retain the non-exclusive right to use all or part of the Article for the non-commercial purpose of giving lectures, presentations or teaching classes, and to post a copy of the Article on the Institution's website or the Author's personal website, in each case provided that a link to the Article on the JoVE website is provided and notice of JoVE's copyright in the Article is included. All non-copyright intellectual property rights in and to the Article, such as patent rights, shall remain with the Author.

**5. Grant of Rights in Video – Standard Access.** This **Section 5** applies if the "Standard Access" box has been checked in **Item 1** above or if no box has been checked in **Item 1** above. In consideration of JoVE agreeing to produce, display or otherwise assist with the Video, the Author hereby acknowledges and agrees that, Subject to **Section 7** below, JoVE is and shall be the sole and exclusive owner of all rights of any nature, including, without limitation, all copyrights, in and to the Video. To the extent that, by law, the Author is deemed, now or at any time in the future, to have any rights of any nature in or to the Video, the Author hereby disclaims all such rights and transfers all such rights to JoVE.

**6. Grant of Rights in Video – Open Access.** This **Section 6** applies only if the "Open Access" box has been checked in **Item 1** above. In consideration of JoVE agreeing to produce, display or otherwise assist with the Video, the Author hereby grants to JoVE, subject to **Section 7** below, the exclusive, royalty-free, perpetual (for the full term of copyright in the Article, including any extensions thereto) license (a) to publish, reproduce, distribute, display and store the Video in all forms, formats and media whether now known or hereafter developed (including without limitation in print, digital and electronic form) throughout the world, (b) to translate the Video into other languages, create adaptations, summaries or extracts of the Video or other Derivative Works or Collective Works based on all or any portion of the Video and exercise all of the rights set forth in (a) above in such translations, adaptations, summaries, extracts, Derivative Works or Collective Works and (c) to license others to do any or all of the above. The foregoing rights may be exercised in all media and formats, whether now known or hereafter devised, and include the right to make such modifications as are technically necessary to exercise the rights in other media and formats. For any Video to which this **Section 6** is applicable, JoVE and the Author hereby grant to the public all such rights in the Video as provided in, but subject to all limitations and requirements set forth in, the CRC License.

**7. Government Employees.** If the Author is a United States government employee and the Article was prepared in the course of his or her duties as a United States government employee, as indicated in **Item 2** above, and any of the licenses or grants granted by the Author hereunder exceed the scope of the 17 U.S.C. 403, then the rights granted hereunder shall be limited to the maximum rights permitted under such

statute. In such case, all provisions contained herein that are not in conflict with such statute shall remain in full force and effect, and all provisions contained herein that do so conflict shall be deemed to be amended so as to provide to JoVE the maximum rights permissible within such statute.

**8. Likeness, Privacy, Personality.** The Author hereby grants JoVE the right to use the Author's name, voice, likeness, picture, photograph, image, biography and performance in any way, commercial or otherwise, in connection with the Materials and the sale, promotion and distribution thereof. The Author hereby waives any and all rights he or she may have, relating to his or her appearance in the Video or otherwise relating to the Materials, under all applicable privacy, likeness, personality or similar laws.

**9. Author Warranties.** The Author represents and warrants that the Article is original, that it has not been published, that the copyright interest is owned by the Author (or, if more than one author is listed at the beginning of this Agreement, by such authors collectively) and has not been assigned, licensed, or otherwise transferred to any other party. The Author represents and warrants that the author(s) listed at the top of this Agreement are the only authors of the Materials. If more than one author is listed at the top of this Agreement and if any such author has not entered into a separate Article and Video License Agreement with JoVE relating to the Materials, the Author represents and warrants that the Author has been authorized by each of the other such authors to execute this Agreement on his or her behalf and to bind him or her with respect to the terms of this Agreement as if each of them had been a party hereto as an Author. The Author warrants that the use, reproduction, distribution, public or private performance or display, and/or modification of all or any portion of the Materials does not and will not violate, infringe and/or misappropriate the patent, trademark, intellectual property or other rights of any third party. The Author represents and warrants that it has and will continue to comply with all government, institutional and other regulations, including, without limitation all institutional, laboratory, hospital, ethical, human and animal treatment, privacy, and all other rules, regulations, laws, procedures or guidelines, applicable to the Materials, and that all research involving human and animal subjects has been approved by the Author's relevant institutional review board.

**10. JoVE Discretion.** If the Author requests the assistance of JoVE in producing the Video in the Author's facility, the Author shall ensure that the presence of JoVE employees, agents or independent contractors is in accordance with the relevant regulations of the Author's institution. If more than one author is listed at the beginning of this Agreement, JoVE may, in its sole discretion, elect not take any action with respect to the Article until such time as it has received complete, executed Article and Video License Agreements from each such author. JoVE reserves the right, in its absolute and sole discretion and without giving any reason therefore, to accept or decline any work submitted to JoVE. JoVE and its employees, agents and independent contractors shall have

## ARTICLE AND VIDEO LICENSE AGREEMENT

full, unfettered access to the facilities of the Author or of the Author's institution as necessary to make the Video, whether actually published or not. JoVE has sole discretion as to the method of making and publishing the Materials, including, without limitation, to all decisions regarding editing, lighting, filming, timing of publication, if any, length, quality, content and the like.

11. **Indemnification.** The Author agrees to indemnify JoVE and/or its successors and assigns from and against any and all claims, costs, and expenses, including attorney's fees, arising out of any breach of any warranty or other representations contained herein. The Author further agrees to indemnify and hold harmless JoVE from and against any and all claims, costs, and expenses, including attorney's fees, resulting from the breach by the Author of any representation or warranty contained herein or from allegations or instances of violation of intellectual property rights, damage to the Author's or the Author's institution's facilities, fraud, libel, defamation, research, equipment, experiments, property damage, personal injury, violations of institutional, laboratory, hospital, ethical, human and animal treatment, privacy or other rules, regulations, laws, procedures or guidelines, liabilities and other losses or damages related in any way to the submission of work to JoVE, making of videos by JoVE, or publication in JoVE or elsewhere by JoVE. The Author shall be responsible for, and shall hold JoVE harmless from, damages caused by lack of sterilization, lack of cleanliness or by contamination due to the making of a video by JoVE its employees, agents or independent contractors. All sterilization, cleanliness or decontamination procedures shall be solely the responsibility of the Author and shall be undertaken at the Author's

expense. All indemnifications provided herein shall include JoVE's attorney's fees and costs related to said losses or damages. Such indemnification and holding harmless shall include such losses or damages incurred by, or in connection with, acts or omissions of JoVE, its employees, agents or independent contractors.

12. **Fees.** To cover the cost incurred for publication, JoVE must receive payment before production and publication the Materials. Payment is due in 21 days of invoice. Should the Materials not be published due to an editorial or production decision, these funds will be returned to the Author. Withdrawal by the Author of any submitted Materials after final peer review approval will result in a US\$1,200 fee to cover pre-production expenses incurred by JoVE. If payment is not received by the completion of filming, production and publication of the Materials will be suspended until payment is received.

13. **Transfer, Governing Law.** This Agreement may be assigned by JoVE and shall inure to the benefits of any of JoVE's successors and assignees. This Agreement shall be governed and construed by the internal laws of the Commonwealth of Massachusetts without giving effect to any conflict of law provision thereunder. This Agreement may be executed in counterparts, each of which shall be deemed an original, but all of which together shall be deemed to be one and the same agreement. A signed copy of this Agreement delivered by facsimile, e-mail or other means of electronic transmission shall be deemed to have the same legal effect as delivery of an original signed copy of this Agreement.

A signed copy of this document must be sent with all new submissions. Only one Agreement required per submission.

### CORRESPONDING AUTHOR:

Name: Boue  
Department: Biological Systems Research  
Institution: Philip Morris International  
Article Title: Impact assessment of repeated exposure of organic 3D ...  
Signature: [Signature] Date: 20/05/2014

Please submit a signed and dated copy of this license by one of the following three methods:

- 1) Upload a scanned copy of the document as a pdf on the JoVE submission site;
- 2) Fax the document to +1.866.381.2236;
- 3) Mail the document to JoVE / Attn: JoVE Editorial / 1 Alewife Center #200 / Cambridge, MA 02139

For questions, please email [submissions@jove.com](mailto:submissions@jove.com) or call +1.617.945.9051



We thank the reviewers for their careful review of our manuscript. We have revised the manuscript according to the suggestions. In addition, here we provide point-by-point responses to the reviewers' comments.

## **Reviewers' comments:**

### **Reviewer #1:**

#### **Manuscript Summary:**

**This article by Kuehn et al demonstrates the role of organotypic 3D in vitro culture effectiveness to describe the effects of repeated exposure of whole cigarette smoke. The author demonstrates that particle matters can effectively impair ciliary motility, and airway functions as measured by the activity of cytochrome P450s ( CYP1A1/B1B). In addition the author demonstrated the utilization of network-and transcriptomic based systems biology approach as an appropriate measurement of CS-induced alterations of xenobiotic metabolism are similar to those found in bronchial and nasal epithelial from smokers.**

#### **Major Concerns:**

**No Major concerns**

#### **Minor Concerns:**

**line 353 Section 6.1.6, the author wrote " Transfer the tissue from the blade to homogenizing tube appropriately labelled and screw the lid on the tube, shake it and vortex it". I would suggest the author include the "insert membrane of tissue" instead of transfer the tissue from the blade, as written it suggest that the tissues that were on the insert was scraped off by the blade. If that is the case, that should be stated but I believe the author intention is to transfer the insert membrane with tissue or cells into the appropriate labeled tubes. This sentence need some clarification.**

Answer:

The original statement in line 353 was the following: “

6.1.1) Transfer the tissue from the blade to homogenizing tube appropriately labelled and screw the lid on the tube, shake it and vortex it.”

To clarify, we have revised the sentence as follows:

6.1.1) Transfer the tissue (along with the insert membrane) from the blade to the homogenizing tube appropriately labelled and screw the lid on the tube, shake it and vortex it.”

**In the Discussion section of the manuscript, end of line 715-716 the author stated" It can be controlled thanks to a stage-top incubator with temperature, CO2 and humidity control". My concern is the work "thanks" which is not quite scientifically appropriate. I would suggest removing that work and indicating that "Temperature monitoring can be controlled by using a stage-top incubator..."**

Answer:

We agree with the reviewer. We have revised the sentence.

#### **Additional Comments to Authors:**

**N/A**

**Reviewer #2:**

**Manuscript Summary:**

**In this manuscript, the utilization of an in vitro exposure system to expose human organotypic bronchial and nasal tissue models to mainstream CS is demonstrated. Ciliary beating frequency and the activity of cytochrome P450s (CYP) 1A1/1B1 were measured to assess functional impacts of CS on the tissues. Furthermore, to examine CS induced alterations at the molecular level, gene expression profiles were generated from the tissues following exposure.**

**Major Concerns:**

**Major Comment.**

**Overall, the manuscript will be a useful contribution to the CS literature, demonstrating the feasibility of taking analytical measurements from organotypic tissue culture exposed to CS.**

**Representative data for fig 3 appear to represent single measurements, and lack statistical evaluation. Except as a demonstration that the measurement itself is feasible, single measurements are of little interpretive use. Not clear if the result with nasal CBF after CS represents total loss of activity Results of both panels should be specifically referred to in the text Figure 4, description, and legend mentions TEER, but this is not represented in the figure. Panel A, left side has no y-axis label. The figure lacks P values or indication of statistical significance. The inclusion of representative TEER data would be helpful as a protocol is written for this measurement.**

**Answer:**

We have revised the figure of CBF measurement, which now illustrates duplicate sample measurements (conducted in two different tissue inserts: replicate 1 and replicate 2 in the revised Figure 3). Additional discussion has been added in the discussion section to clarify the observed changes of the CBF in both bronchial and nasal tissues.

Regarding the TEER measurement, we agree with the Reviewer's suggestion. In this revised manuscript, the result of TEER measurements are shown in Figure 4 (right panels C and D). In addition, we have inserted y-axis descriptions for all panels.

**Minor Concerns:**

**The manuscript contains some minor grammatical issues.**

**Answer:**

We thank the Reviewer for the revision of the grammar.

**Short abstract: "cytochrome P450's activity assay" remove possessive, replace with "cytochrome P450 activity assays"**

**Answer:**

We have revised this phrase accordingly and kept the singular form of the "assay" because only one type of assay (to measure CYP activity) is described in the manuscript.

**Long abstract, line 139: "compared with air-exposed ones." Rewrite as "compared with air-exposed tissues"**

**Answer:**

The sentence has been revised accordingly.

**Introduction, line 161 "...of long-term exposure." of long-term CS exposure**

**Answer:**

We have clarified the sentence and indicated the applicability of the test system (i.e. the bronchial organotypic tissue model) for an assessment of any type of aerosol exposure. The sentence now reads:

“Finally, because the bronchial tissue models could be cultured for up to several months<sup>4,5</sup>, they could potentially be used to examine the effects of long-term exposure of test items.”

**Discussion, line 679 " are conform to the expectations" grammar, are conforming to the expectations.**

Answer:

The sentence has been revised accordingly.

**Line 694, grammar, prior to measurement.....prior to exposure, etc.**

Answer:

We have revised the sentence, which now reads:

“The mucus needs to be washed off prior to TEER measurement, because apical washing right before the exposure may interfere with the tissue responses to CS. Therefore, the measurement is performed three days before exposure, and not right before exposure.”

**Line 701 one of the limitations**

Answer:

The sentence has been revised accordingly.

**Line 724 sp. Consistency**

Answer:

The sentence has been revised accordingly.

**Reviewer #3:**

**The air-liquid interphase system for culturing airway epithelial cells is not new and has been published by others. The authors have added measurements of trans-epithelial resistance and global gene expression to the system, both also previously described in cultured airway epithelial cells but of interest. The focus of the manuscript is on tobacco smoke induced expression of oxidant-pathway detoxifying genes, again an area previously explored by others.**

**The cigarette smoke exposure seems mild (3 cigarettes per day) and exposure toxic products is not quantified and the measurements were made 48 hours after the exposure, plenty of time for most alterations to return to normal. It is unclear whether the gene-expression results in Figure 5 represent statistically significant changes in expression of genes involved in xenobiotic metabolism; if the results are from a single experiment the data clearly needs repeating. The measurements reported were taken 48 hours after smoke exposure, plenty of time for a number of smoke exposure effects to have vanished.**

Answer:

We thank the Reviewer for his/her comment. We acknowledge that the use of air-liquid interface system for cigarette smoke testing, trans-epithelial resistance, and global gene expression have been reported before. It is our aim, however, to focus this manuscript on detailing the methods used for the benefit of Jove readers/viewers, rather than reporting new results. Moreover, in this manuscript, we also reported additional applications of the test system for cilia beating measurement (before and after exposure) and for gene expression analysis using system-biology approach, in particular.

The exposure of the toxic product is not described in this manuscript. This is because the primary focus of the present work is the applicability of organotypic tissue models for the assessment of aerosol exposure impact (in this present case, the Vitrocell system was used as the exposure machine). A detail discussion on the smoke characterization (including the analysis of the toxic products, e.g., carbonyls) using the

Vitrocell system is, to our opinion, out of the scope of the current manuscript and has been submitted for publication in Chemistry Central Journal.

Regarding the gene expression results, the Reviewer is right in his/her comment that at 48 h post-exposure, the changes of gene expression may not be as high as those measured at earlier post-exposure time-points. We did a more comprehensive evaluation that has been published in a previous publication to which we refer to in the present manuscript, in which various post-exposure time-points (0 h, 4 h, 24 h, and 48 h) were investigated (Iskandar, A. R., Martin, F., Talkka, M. et al. Systems approaches evaluating the perturbation of xenobiotic metabolism in response to cigarette smoke exposure in nasal and bronchial tissues. *Biomed Res Int.* 2013, 512086, doi: 10.1155/2013/512086 (2013). In addition, a more detailed biological investigation based on the gene expression changes has been conducted and is currently under final review for publication in the International Journal of Toxicology (Talikka, M., Kostadinova, R., Xiang, Y., et al. The response of human respiratory organotypic cultures to repeated cigarette smoke exposure. *Int J Toxicol* [submitted June 2014, currently under final review].