

Journal of Visualized Experiments

Non-Invasive Model of Neuropathogenic Escherichia coli Infection in the Neonatal Rat --Manuscript Draft--

Manuscript Number:	JoVE52018R2
Full Title:	Non-Invasive Model of Neuropathogenic Escherichia coli Infection in the Neonatal Rat
Article Type:	Methods Article - JoVE Produced Video
Keywords:	Bacterial infection, neonatal bacterial meningitis, bacteremia, sepsis, animal model, K1 polysaccharide, systemic infection, gastrointestinal tract, age dependency
Manuscript Classifications:	3.1: Bacterial Infections and Mycoses; 3.1.252: Bacterial Infections; 3.1.252.100: Bacteremia; 3.1.252.400: Gram-Negative Bacterial Infections; 3.1.395: Central Nervous System Infections
Corresponding Author:	Peter William Taylor, PhD University College London London, London UNITED KINGDOM
Corresponding Author Secondary Information:	
Corresponding Author E-Mail:	peter.taylor@ucl.ac.uk
Corresponding Author's Institution:	University College London
Corresponding Author's Secondary Institution:	
First Author:	Fatma Dalgakiran
First Author Secondary Information:	
Other Authors:	Fatma Dalgakiran
	Luci Witcomb
	Alex McCarthy
	George Birchenough
Order of Authors Secondary Information:	
Abstract:	Investigation of the interactions between animal host and bacterial pathogen is only meaningful if the infection model employed replicates the principal features of the natural infection. This protocol describes procedures for the establishment and evaluation of systemic infection due to neuropathogenic Escherichia coli K1 in the neonatal rat. Colonization of the gastrointestinal tract leads to dissemination of the pathogen along the gut-lymph-blood-brain course of infection and the model displays strong age dependency. A strain of E. coli O18:K1 with enhanced virulence for the neonatal rat produces exceptionally high rates of colonization, translocation to the blood compartment and invasion of the meninges following transit through the choroid plexus. As in the human host, penetration of the central nervous system is accompanied by local inflammation and an invariably lethal outcome. The model is of proven utility for studies of the mechanism of pathogenesis, for evaluation of therapeutic interventions and for assessment of bacterial virulence.
Author Comments:	Revision completed - rebuttal uploaded
Additional Information:	
Question	Response
If this article needs to be "in-press" by a certain date to satisfy grant requirements, please indicate the date below and explain in your cover letter.	

If this article needs to be filmed by a certain date to due to author/equipment/lab availability, please indicate the date below and explain in your cover letter.

Title:
Non-Invasive Model of Neuropathogenic *Escherichia coli* Infection in the Neonatal Rat

Authors:
Fatma Dalgakiran, Luci A. Witcomb, Alex J. McCarthy, George M.H. Birchenough and Peter W. Taylor

Fatma Dalgakiran
School of Pharmacy
University College London
London, UK
fatma.dalgakiran.11@ucl.ac.uk

Luci A. Witcomb
School of Pharmacy
University College London
London, UK
l.witcomb@ucl.ac.uk

Alex J. McCarthy
School of Pharmacy
University College London
London, UK
alex.mccarthy@ucl.ac.uk

George M.H. Birchenough
Mucin Biology Group
University of Gothenburg
Gothenburg, Sweden
george.birchenough@gu.se

Peter W. Taylor
School of Pharmacy
University College London
London, UK
peter.taylor@ucl.ac.uk

Corresponding author: Peter W. Taylor, PhD

Keywords:
Bacterial infection, neonatal bacterial meningitis, bacteremia, sepsis, animal model, K1 polysaccharide, systemic infection, gastrointestinal tract, age dependency

Short Abstract:

Here, a procedure is described for the establishment of systemic infection in the neonatal rat with cultures of *Escherichia coli* K1. This non-invasive procedure permits colonization of the gastrointestinal tract, translocation of the pathogen to the systemic circulation, and invasion of the central nervous system at the choroid plexus.

Long Abstract:

Investigation of the interactions between animal host and bacterial pathogen is only meaningful if the infection model employed replicates the principal features of the natural infection. This protocol describes procedures for the establishment and evaluation of systemic infection due to neuropathogenic *Escherichia coli* K1 in the neonatal rat. Colonization of the gastrointestinal tract leads to dissemination of the pathogen along the gut-lymph-blood-brain course of infection and the model displays strong age dependency. A strain of *E. coli* O18:K1 with enhanced virulence for the neonatal rat produces exceptionally high rates of colonization, translocation to the blood compartment and invasion of the meninges following transit through the choroid plexus. As in the human host, penetration of the central nervous system is accompanied by local inflammation and an invariably lethal outcome. The model is of proven utility for studies of the mechanism of pathogenesis, for evaluation of therapeutic interventions and for assessment of bacterial virulence.

Introduction:

Systemic bacterial infections are a major threat to the well-being and survival of the newborn; preterm infants are particularly vulnerable. Neonatal bacterial meningitis (NBM), frequently associated with bacterial sepsis, continues to be a significant source of mortality and morbidity during the first few weeks of life and the problem is exacerbated by the continuing evolution of resistance to frontline antibacterial drugs^{1, 2}. A case of NBM is a medical emergency that carries a high medical, social and economic burden³; consequently, there is an urgent need for new therapeutics and, particularly, novel prophylactic strategies to reduce the burden of infection. Some features of NBM are unusual: in the developed world, *Escherichia coli* and Group B streptococci are responsible for the large majority of cases and the capacity of these strains to elicit NBM is almost always associated with the presence of a protective polysaccharide capsule that enables the pathogen to evade immune recognition processes⁴. A very high proportion (80-85%) of neuroinvasive *E. coli* express the K1 capsule^{5, 6}, an α -2,8-linked polysialic acid polymer that is structurally identical to host modulators of neuronal plasticity⁷.

The evaluation of new therapeutics and prophylactics for NBM and associated bacteremia and sepsis would clearly benefit from a robust animal model of infection that mimics the key features of the disease in the human neonate, in particular the strong age-dependency and the natural pathway of infection. A wide range of models for Gram-positive and Gram-negative bacterial meningitis are available^{8, 9} and these have considerably extended our knowledge of pathogenesis, pathophysiology and treatment options in these infections. Thus, experimental infections in rats, mice, rabbits and monkeys have been used to study meningitis in both the neonate and the adult. However, many of these models employ direct intracisternal or subcutaneous injection of bacteria for initiation of infection, creating an artificial pathogenesis by bypassing natural processes of dissemination from the site of colonization. In some cases

these methods of inoculation led to significant changes in pathology; for example, subcutaneous administration of *E. coli* K1 strains abrogated the age-dependency associated with the natural infection, producing bacteremia and invasion of the central nervous system (CNS) in both neonates and adults¹⁰. Predisposition to *E. coli* NBM is critically dependent on vertical transmission of the causative agent from mother to infant at or soon after birth¹¹. Maternally-derived *E. coli* K1 bacteria colonize the neonatal gastrointestinal (GI) tract¹¹⁻¹³, which is sterile at birth but rapidly acquires a complex microbiota¹⁴. In colonized neonates, *E. coli* K1 bacteria have the capacity to translocate from the intestinal lumen into the systemic circulation before entering the CNS across the blood-brain or blood-cerebrospinal fluid barriers^{9, 15}. The design of robust models of experimental infection should take these details into account.

Although mice have been widely used for the study of some forms of bacterial meningitis⁸, they are unsuitable for studies of neonatal infection: they are overwhelmed by systemic infection and do not show the strong age dependency characteristic of human infants¹⁶. Further, α -defensins, key peptides of the GI tract providing protection against systemic invasion by *E. coli* K1¹⁷, are highly expressed in Paneth cells and neutrophils in humans and rats but not in mice¹⁸. There is a remarkable degree of duplication, redundancy and heterogeneity in mouse defensin and related cryptidin genes not found in other animals¹⁹. The neonatal rat was initially used by Moxon and coworkers²⁰ to investigate the pathogenesis of *Haemophilus influenzae* meningitis following intranasal inoculation, replicating the natural site of colonization of this neonatal pathogen in the human, and subsequently adapted for age-dependent *E. coli* K1 bacteremia and meningitis. Bortolussi *et al.*²¹ employed intraperitoneal injection of the bacterial inoculum to initiate infection but the key study of Glode and coworkers²² used oral gastric feeding to parallel the natural route of infection after GI colonization. As the gastric tube may damage mucosal surfaces, the procedure was refined to include feeding of the inoculum to the neonates²³. Here, the method for GI tract colonization and procedures for tracking the infection in susceptible rat pups are described; additionally, therapeutic and preventative applications of the model are discussed.

Protocol:

All animal experiments performed in this study conformed to national and European legislation and were approved by the Ethical Committee of the UCL School of Pharmacy and the UK Home Office (HO). All animal work was conducted under HO project licences PPL 80/2243 and PPL 70/7773.

1. Rat Preparation

1.1) Carry out all *in vivo* experiments using pathogen-free Wistar neonatal rats.

1.2) Retain all rat litters (12 neonates per colony) in individual cages with their breastfeeding mothers (9-11 week old females), under optimal conditions (19-21 °C, 45-55% humidity, 15-20 air changes per hour and 12 hour light/dark cycle).

2. Bacterial cell preparation

2.1) Store *E. coli* K1 stocks in 20% (v/v) glycerol at -80 °C. For each experiment, plate out stock bacteria onto Mueller-Hinton (MH) agar plates, and incubate at 37 °C overnight (O/N).

2.2) The day before feeding, inoculate 10 ml of MH broth with a single *E. coli* K1 colony and culture O/N at 37 °C, 200 rotations per minute (rpm). As a control for medium contamination, prepare 10 ml of uninoculated MH broth and incubate at 37 °C at 200 rpm.

2.3) Transfer 100 µl of O/N bacterial suspension into 9.9 ml of MH broth (1:100 v/v), and incubate at 37 °C, 200 rpm, until mid-exponential-phase is reached, corresponding to an optical density of 0.6 measured at a wavelength of 600 nm (OD₆₀₀).

3. Feeding of neonatal rats with *E. coli* K1

3.1) Gently hold the animal vertically in one hand from the scruff of the neck, allowing the mouth to open. Slowly insert the sterile pipette tip into the mouth of the animal, and pipette 20 µl of the inoculum (~37 °C) into the mouth of the animal over a 30 sec time period. Return the animal to its mother immediately after feeding.

3.2) Verify that $4-8 \times 10^6$ bacteria have been fed to each pup by serial dilution of the inoculum in PBS and spotting onto MH agar plates.

4. Assessment of colonisation by *E. coli* K1

4.1) Gently hold the animal in one hand from the scruff of the neck. Moisten a sterile cotton-tipped swab in sterile PBS, and then gently swab the perianal area. Return the animal to its mother immediately after swabbing.

4.2) Place the swab tip into a tube containing 300 µl of sterile PBS and store on ice.

4.3) Determine the numbers of viable bacteria by serial dilution in PBS and plating onto MacConkey agar plates.

4.4) Determine viable *E. coli* K1 by bacteriophage susceptibility testing. Pick an individual colony using a sterile microbiological loop, dipped into 200 µl sterile PBS, then subject to vortex mixing.

4.5) Using a sterile microbiological loop, sub-culture onto MH agar in a straight line. Allow the plate to dry for 30 sec, and then pipette 10 µl of bacteriophage K1E (10^9 plaque forming units/ml (PFU/ml)) onto the centre of the line. Incubate the plate O/N at 37 °C.

4.6) Next day, examine the plate for bacteriophage-mediated lysis.

5. Assessment of disease severity

5.1) Assess the disease severity of each animal 4-5 times daily using the seven-point scoring system outlined in Table 1.

5.2) If an animal scores ≥ 3 out of 7, immediately cull the animal to minimise suffering. Record the animal as dead.

6. Killing of neonatal rats and blood collection

6.1) Gently hold the animal in one hand, exposing the head and neck. Sterilise the neck of the animal by wiping with an alcohol swab. Sterilise a large pair of scissors using 70% ethanol, before rinsing in sterile PBS to remove trace ethanol.

6.2) Sterilize the neck region of the neonate with an alcohol swab. Gently hold the animal directly above a petri dish. Decapitate the neonate using sharp surgical scissors, ensuring that the blood drips into the petri dish. Avoid contact with the head to prevent contamination of blood with skin flora.

6.3) Immediately collect the blood using a sterile pipette and mix with heparin sodium salt at a concentration of 20-50 units/ml in a 0.5 ml microcentrifuge tube.

6.4) Determine the numbers of viable bacteria by serial dilution in PBS and plating onto MacConkey agar plates. Determine the numbers of viable *E. coli* K1 by testing the susceptibility of viable bacteria to bacteriophage K1E.

7. Dissection

7.1) Following decapitation of the neonatal rat, use aseptic conditions to excise and collect tissues of interest. Wash all instruments (shown in **Figure 1**) in 70% ethanol and sterile PBS.

7.2) Clean the dissection board and wet the abdomen completely with 70% ethanol. Position the corpse on its back and fix to the dissection board by (i) pinning the left hind leg to the operation table with a sterile needle, (ii) stretching the corpse and pinning the right foreleg to the operation table, (iii) pinning the right hind leg and left foreleg to the operation table.

7.3) Pull the skin along the left hand side of the lower abdomen using forceps, then cut along the left hand side of the corpse from the lower abdomen to the sternum using small dissection scissors.

7.4) Extend the excision across the sternum, and then down the right hand side of the corpse from the sternum to the lower abdomen using forceps and small dissection scissors, ensuring that none of the underlying structures are damaged.

7.5) Finally, gently pull down the skin flap from the sternum to the lower abdomen using iris curved dissection forceps to expose the peritoneum.

7.6) Gently raise the peritoneum with forceps and cut vertically to expose the internal organs, ensuring that none of the underlying organs are damaged.

8. Collecting the GI tract

8.1) Identify the stomach, small intestine, cecum, colon and mesenteric lymphatic system.

8.2) Remove the stomach by gently transecting at either side, then place into a bijou containing 1.6 ml of sterile PBS using sterile forceps.

8.3) Transect the colon at the rectum. Carefully pull the entire intestinal mass from the corpse using dissection forceps and place in a sterile petri dish. Ensure that this is done gently so that the intestinal structure and mesenteric lymphatic structures do not separate.

9. Separation of the GI tract and the mesenteric lymphatic system (Figure 2)

9.1) Pour 30 ml of sterile PBS into the petri dish, ensuring the GI tract is completely submerged.

9.2) Identify the central mass of the mesenteric lymphatic system, and pinch using fine dissection forceps. Identify the most proximal part of the small intestine, and pinch using fine dissection forceps.

9.3) Slowly pull the central mass of mesenteric lymphatic system and the distal small intestine in opposite directions until the two tissues are completely separated from each other. Perform this process with care to ensure that the small intestines are not stretched, as this prevents reproducible collection of proximal, middle and distal regions. Place the mesenteric lymphatic system in 300-500 μ l sterile PBS and place on ice.

10. Sectioning of the GI tract

10.1) Transect the GI tract at the cecum to separate the small intestine from the colon.

10.2) Place the colon in 300-500 μ l sterile PBS and place on ice.

10.3) Collect representative tissues from proximal, middle and distal regions of the small intestine. Align the small intestine from the mid-point.

10.4) Then, (i) collect the last 2 cm of tissue prior to the caecum as the distal small intestine, (ii) collect the tissue from 5-7 cm above the mid-point as the proximal small intestine, and (iii) collect the tissue from 3-5 cm below the mid-point as the middle small intestine.

11. Collecting the liver

11.1) Identify the three lobes of the rat liver after removal of the stomach.

11.2) Pull lobes away from the abdominal cavity using fine dissection forceps.

11.3) Remove the liver by cutting any attaching ligaments using fine scissors. Place liver in 300-500 µl sterile PBS and place on ice.

12. Collecting the spleen

12.1) Identify the spleen.

12.2) Pull spleen away from the stomach and use fine scissors to cut the gastrosplenic ligament.

12.3) Place spleen in 300-500 µl sterile PBS and place on ice.

13. Collecting the kidneys

13.1) Identify the kidneys that will become visible at the back of the abdominal cavity upon removal of the gastrointestinal tract and other organs.

13.2) Cut ureters and any attaching ligaments using fine dissection scissors and remove kidneys using fine forceps. Remove adrenal glands and any fatty material (if still attached) using fine forceps and dissection scissors.

13.3) Place both kidneys in 300-500 µl sterile PBS and place on ice.

14. Collecting the brain

14.1) After decapitation, hold the head in an upright position using curved forceps. Pinch skin on top of head longitudinally using another set of curved forceps, and make an incision using fine dissection scissors. Cut remaining skin near neck, again longitudinally with fine dissection scissors.

14.2) Pull skin in an outwards direction using fine forceps on both sides to reveal the skull and remove skin flaps using fine dissection scissors. Place fine dissection scissors in spinal opening and make an incision along the skull towards the rostrum.

14.3) Pull both sections of skull in an outwards direction using fine forceps. Cut to remove skull segments.

14.4) Remove brain using broad forceps, using an upwards scooping motion from the spinal opening towards the rostrum. Wash the brain in PBS twice to remove any blood from decapitation procedure.

15. Tissue processing and homogenization

15.1) For experiments requiring viability counts or DNA extraction, place tissues into tubes containing sterile PBS. Immediately determine the numbers of viable bacteria by serial dilution in PBS and plating onto MacConkey agar plates, or store at -20 °C with 20% glycerol for short term. For DNA extraction, store tissues at -20 °C.

15.2) For experiments requiring RNA extraction, place tissues into appropriate volumes of RNeasy lysis solution (10 µl per 1 mg tissue), then store immediately at -20 °C for short term or at -80 °C long term storage.

15.3) For experiments requiring imaging, place tissues in 10 ml Methacarn solution (60% Methanol, 30% Chloroform and 10% Acetic Acid), then store at room temperature (20-25 °C) for up to 3 weeks.

15.4) Calculate tissue weight by comparison of weight of tubes before and after addition of tissues. Homogenize tissues using a homogenizer. Wash the homogenizer once in 70% ethanol and twice in sterile PBS in between homogenization of each sample.

Note: Methacarn fixation is desirable for fixation of intestinal samples in order to preserve mucin-related mucosal defense structures; formalin fixation may be used for systemic tissues.

Representative Results:

The *E. coli* K1 systemic infection model described here replicates many of the features of the natural infection in humans. The bacteria are ingested, colonize the GI tract, translocate into the blood compartment via the mesenteric lymph nodes before establishing organ-specific disease with associated inflammation of the brain²⁴. Importantly, the model displays strong age dependency; as shown in **Figure 3**, two-day-old (P2) rat pups are highly susceptible to invasive disease but over a seven-day period the animals become progressively more refractory to infection, but not to GI tract colonization¹⁷. After transit from the site of GI colonization to the blood compartment, the bacteria can be visualized in blood samples by fluorescence microscopy (**Figure 4**) before entering the CNS predominantly at the choroid plexus²⁵. In some animals, there is extensive invasion of other major organs such as lung, spleen and kidney²⁵.

Bacterial numbers in tissues can vary substantially between individual pups²⁵ but when the bioburden is scored as either present or absent there is a high degree of reproducibility with regard to organ invasion. With a litter of 12 pups as a single test cohort, power calculations using G* Power Software determined that this sample size equates to a 98.6% probability of finding an effect based on survival using six animals from the cohort and >99% probability if all twelve are taken into consideration. The model is therefore suitable for evaluation of novel

agents specifically tailored for the treatment of neonatal bacterial infections and has been used in the procedure to evaluate the therapeutic potential of the capsule depolymerase EndoE that selectively removes the K1 capsule from the bacterial surface^{24,25,26}. It may also be used to investigate host – bacteria interactions that impact on the pathogenesis of *E. coli* neuropathogens; within this context it has been employed for studies of *E. coli* A192PP colonization and dissemination. It has been demonstrated that *E. coli* A192PP cells persist in the GI tract of P2, P5 and P9 pups in large numbers; temporal aspects of colonization in these three groups were very similar (**Figure 5**) and reflects the capacity of the bacteria to replicate and maintain population density within the gut.

The virulence of the clinical isolate A192 was enhanced by serial passage in neonatal rats in order to ensure little or no redundancy of animal use. *E. coli* A192 colonized P2 neonatal rats with 100% efficiency, elicited bacteremia in 35% of animals and produced a lethal effect in 25%²⁷. The passaged derivative A192PP colonizes the GI tract, produces bacteremia and causes lethality in all P2 pups. Thus, the model can be employed to investigate the virulence of different K1 strains with respect to their capacity to invade the CNS and other organ systems from the site of colonization. In this context, Pluschke and co-workers²³ used a neonatal rat infection model to determine the capacity of 95 *E. coli* K1 strains of human origin to cause bacteremia after gut colonization; they observed wide variations in the efficiency of both colonization and invasive capability, underpinning the clonal nature of *E. coli* K1 neuropathogens.

Table 1. Seven-point scoring system: The first three scores listed are usually the initial signs observed. *Neonates with systemic infection experience elevated body temperature (> 2 °C). However, due to the lack of agility of the animals to reach their mother to maintain body temperature, unhealthy animals may become separated from the litter and feel cold to the bare hand

Figure 1: Materials for tissue collection: (a) weighing scale, (b) pre-weighed tubes containing necessary media, (c) operation table, ruler and needles to pin down the animal, (d) 70% (v/v) ethanol and PBS to sterilize the tissue collection equipment, (e) tissue collection kit including a large pair of scissors for decapitation and scissors and tweezers and blades of various size and shapes, (f) ice to preserve the tissues, (g) 70% (v/v) ethanol for sterilizing the operation table and surrounds.

Figure 2: Separation of the GI tract and the mesenteric lymphatic system. A) Grip the central mass of the mesenteric lymphatic system with fine dissection forceps. B) Grip the proximal part of the small intestine, and pull in opposite directions. C) The GI tract and mesenteric lymphatic system will fully separate.

Figure 3: Survival of neonatal rat pups aged from two days (P2) to nine days (P9) following oral administration of *E. coli* A192PP, illustrating the strong age dependency of systemic infection. Each group represents 24 neonates.

Figure 4: Fluorescence images of *E. coli* A192PP cells in a blood smear from a P2 pup infected following oral administration of bacteria. The lipopolysaccharide O antigen at the bacterial surface was stained with rabbit anti-O18 polyclonal antibody and Alexa546-conjugated goat-anti-rabbit second antibody. The K1 capsule was visualized with EndoE-GFP reagent. Virtually all bacteria detected in blood samples displayed the protective K1 capsule. Images were captured by Dr Andrea Zelmer.

Figure 5: *E. coli* A192PP intestinal colonization following administration of the bacterial inoculum. DNA was extracted from whole intestine and *E. coli* K1 colony forming units/g (CFU/g) tissue determined by quantitative polymerase chain reaction (qPCR) targeting the polysialyltransferase (*neuS*) gene as described elsewhere¹⁷. LOD: limit of detection.

Discussion:

The animal model described here builds on previous work that aimed to reproduce the salient features of naturally occurring infections in humans. Neonatal rats were initially employed to study infant meningitis due to *H. influenzae* type b as the species satisfied the key criteria for a robust model of infection. Thus, the portal of entry of the relevant pathogen should reflect that of the natural human infection and reproducibly give rise to similar pathology of sufficient duration to allow for therapeutic intervention. The techniques used should not limit the applicability of the procedure and should not contribute to disease outcome²⁰. The model of *H. influenzae* meningitis in infant rats developed by Moxon and colleagues satisfies these criteria²⁰; the natural infection occurs after colonization of the mucosal membranes of the upper respiratory tract and this important feature was replicated in the rat pups by non-traumatic instillation of the bacteria onto the membranes of the nasal passages. Importantly, the age-dependent nature of the infection was replicated in the model.

The same group were also the first to develop a non-invasive model of *E. coli* K1 NBM in the neonatal rat²². Pathogen-free Sprague-Dawley pups were colonized by feeding 10^8 to 10^{10} bacteria through an oral gastric tube; the inoculum was therefore considerably higher than that employed by us. Colonization with the three K1 strains examined, C94 (O7:K1:H-), EC3 (O1:K1:H-) and LH (O75:K1:H3), occurred in a relatively high proportion (48-74%) of K1-fed animals, but incidences of bacteremia, meningitis and mortality were variable and significantly lower than rates of colonization. The clonal nature of *E. coli* K1 experimental infection was established later²³ and it is now apparent that only O18:K1 and, to a lesser extent, O7:K1 serotypes are able to consistently cause systemic infection. For this reason, these investigations of the pathogenesis of neuropathogenic *E. coli* K1 were based on the use of the virulence-enhanced O18:K1 strain A192PP. A comparison of *E. coli* K1 feeding of neonatal rats through a gastric tube, as used by Glode and colleagues²², and a droplet feeding method as employed by Achtman's group²³ revealed excessive numbers of deaths using the former method, almost certainly due to damage to mucosal surfaces by the gastric tube. As rates of colonization are comparable with these two methods, it is recommended to use the less invasive method of feeding the bacteria using a pipette with a sterile tip, as described in this communication.

E. coli strain A192PP used in our studies is O18:K1. It is a more virulent derivative of the clinical strain *E. coli* A192 that was originally recovered from a patient with septicemia²⁷. The increased virulence of the strain was obtained by serial passage through neonatal rats²⁶. The strain elicits an age-dependent disease severity, with 100% bacteremia and mortality when administered to 2-day-old animals²⁸. In contrast, 9-day-old animals are completely resistant to disease. K1-specific lytic bacteriophage can be used to differentiate *E. coli* K1 from other *E. coli* strains²⁹. In this study, susceptibility of viable bacteria to bacteriophage K1E should be used to (i) check the purity of the *E. coli* K1 suspensions prepared to be fed to the animals, and (ii) to differentiate *E. coli* K1 from other coliforms in order to calculate viability in perianal swabs, blood and tissue samples. If the colony is *E. coli* K1, it will be susceptible to bacteriophage K1E lysis, and bacterial growth will be inhibited at the site of bacteriophage inoculation. If the colony is not *E. coli* K1, it will be resistant to K1E bacteriophage lysis, and there should be an area of bacterial growth at the site of bacteriophage inoculation. It should be borne in mind that animal models cannot reflect all features of the naturally occurring disease. The current model can be modified to examine the virulence characteristics of neuropathogenic bacteria other than *E. coli* A192PP and variations in the size of the colonizing inoculum can be accommodated. Future applications of the technique could include the evaluation of much-needed drugs to treat the condition and to uncover details of the host response to colonization and tissue invasion.

The method described here is simple but effective. Single litters of 10-12 pups were employed as test or control groups and this within-litter approach ensures a high degree of reproducibility and statistical validity. It is imperative that the pups are returned to their natural mothers as soon as possible after any procedure and litters should not therefore comprise animals undergoing different interventions. It is important that the fed inoculum be warmed otherwise the pups will reject the offered culture. The pups rapidly develop a complex microbiota and within two days of birth the GI tract is colonized with a wide range of bacteria from the phyla established as the most abundant microbes in the infant and adult gut. Pups that have not been fed *E. coli* A192PP do not carry *E. coli* K1 in the GI tract¹⁷ and so determination of rates of colonization is relatively straightforward. However, the *neuS*-based qPCR method for detection of colonizing *E. coli* K1 is far more sensitive than traditional culture methods and is strongly recommended¹⁷.

Acknowledgments:

This work was supported by research grants G0400268 and MR/K018396/1 from the Medical Research Council, and by Action Medical Research. Further support was provided by the National Institute for Health Research University College London Hospitals Biomedical Research Centre.

Disclosures:

The authors declare that they have no competing financial interests.

References:

1. Harvey, D., Holt, D.E. & Bedford, H. Bacterial meningitis in the newborn: a prospective study of mortality and morbidity. *Semin. Perinatol.* **23** (5), 218-225 (1999).

2. Brouwer, M.C., Tunkel, A.R. & van de Beek, D. Epidemiology, diagnosis, and antimicrobial treatment of acute bacterial meningitis. *Clin. Microbiol. Rev.* **23** (3), doi:10.1128/CMR.00070-09, 467-492 (2010).
3. da Silva, L.P.A., Cavaleiro, L.G., Queirós, F., Nova, C.V. & Lucena, R. Prevalence of newborn bacterial meningitis and sepsis during the pregnancy period for public health care system participants in Salvador, Bahia, Brazil. *Braz. J. Infect. Dis.* **11** (2), 272-276 (2007).
4. Levy, O. Innate immunity of the newborn: basic mechanisms and clinical correlates. *Nat. Rev. Immunol.* **7** (5), 379-390 (2007).
5. Robbins, J.B., et al. *Escherichia coli* K1 capsular polysaccharide associated with neonatal meningitis. *N. Eng. J. Med.* **290** (22), 1216-1220 (1974).
6. Korhonen, T.K., et al. Serotypes, hemolysin production, and receptor recognition of *Escherichia coli* strains associated with neonatal sepsis and meningitis. *Infect. Immun.* **48** (2), 486-491 (1985).
7. Rutishauser, U. Polysialic acid in the plasticity of the developing and adult vertebrate nervous system. *Nat. Rev. Neurosci.* **9** (1), 26-35 (2008).
8. Koedel, U. & Pfister, H.W. Models of experimental bacterial meningitis. *Infect. Dis. Clin. North Am.* **13** (3), 549-577 (1999).
9. Tunkel, A.R. & Scheld, W.M. Pathogenesis and pathophysiology of bacterial meningitis. *Clin. Microbiol. Rev.* **6** (2), 118-136 (1993).
10. Kim, K.S., et al. The K1 capsule is the critical determinant in the development of *Escherichia coli* meningitis in the rat. *J. Clin. Invest.* **90** (3), 897-905 (1992).
11. Obata-Yasuoka, M., Ba-Thein, W., Tsukamoto, T., Yoshikawa, H. & Hayashi, H. Vaginal *Escherichia coli* share common virulence factor profiles, serotypes and phylogeny with other extraintestinal *E. coli*. *Microbiology.* **148** (9), 2745-2752 (2002).
12. Sarff, L.D., et al. Epidemiology of *Escherichia coli* K1 in healthy and diseased newborns. *Lancet I.* (7916), 1099-1104 (1975).
13. Schiffer, M.S., et al. A review: relation between invasiveness and the K1 capsular polysaccharide of *Escherichia coli*. *Pediatr. Res.* **10** (2), 82-87 (1976).
14. Palmer, C., Bik, E.M., DiGuilio, D.B., Relman, D.A. & Brown, P.O. Development of the human infant intestinal microbiota. *PLoS Biol.* **5** (7), 1556-1573 (2007).
15. Nassif, X., Bourdoulous, S., Eugène, E. & Couraud, P.O. How do extracellular pathogens cross the blood-brain barrier? *Trends Microbiol.* **10** (5), 227-232 (2002).
16. Moxon, E.R., Glode, M.P., Sutton, A. & Robbins, J.B. The infant rat as a model of bacterial meningitis. *J. Infect. Dis.* **136**, S186-S190 (1977).
17. Birchenough, G.M.H., et al. Altered innate defenses in the neonatal gastrointestinal tract in response to colonization by neuropathogenic *Escherichia coli*. *Infect. Immun.* **81** (9), 3264-3275, doi:10.1128/IAI.00268-13 (2013).

18. Ganz, T. Defensins: antimicrobial peptides of innate immunity. *Nat. Rev. Immunol.* **3** (9), 710-720 (2003).
19. Bevins, C.L. & Salzman, N.H. Paneth cells, antimicrobial peptides and maintenance of intestinal homeostasis. *Nat. Rev. Microbiol.* **9** (5), 356-368, doi:10.1038/nrmicro2546 (2011).
20. Moxon, E.R., Smith, A.L., Averill, D.R. & Smith, D.H. *Haemophilus influenzae* meningitis in infant rats after intranasal inoculation. *J. Infect. Dis.* **129** (2), 154-162 (1974).
21. Bortolussi, R., Ferrieri, P., Björkstén, B. & Quie, P.G. Capsular K1 polysaccharide of *Escherichia coli*: relationship to virulence in newborn rats and resistance to phagocytosis. *Infect. Immun.* **25** (1), 293-298 (1979).
22. Glode, M.P., Sutton, A., Moxon, E.R. & Robbins, J.B. Pathogenesis of neonatal *Escherichia coli* meningitis: induction of bacteremia and meningitis in infant rats fed *E. coli* K1. *Infect. Immun.* **16** (1), 75-80 (1977).
23. Pluschke, G., Mercer, A., Kuseček, B., Pohl, A. & Achtman, M. Induction of bacteremia in newborn rats by *Escherichia coli* K1 is correlated with only certain O (lipopolysaccharide) antigen types. *Infect. Immun.* **39** (2), 599-608 (1983).
24. Zelmer, A., *et al.* Administration of capsule-selective endosialidase E minimizes changes in organ gene expression induced by experimental systemic infection with *Escherichia coli* K1. *Microbiology.* **156** (7), 2205-2215, doi:10.1099/mic.0.036145-0 (2010).
25. Zelmer, A., *et al.* Differential expression of the polysialyl capsule during blood-to-brain transit of neuropathogenic *Escherichia coli* K1. *Microbiology.* **154** (8), 2522-2532, doi:10.1099/mic.0.2008/017988-0 (2008).
26. Mushtaq, N., Redpath, M.B., Luzio, J.P. & Taylor P.W. Prevention and cure of systemic *Escherichia coli* K1 infection by modification of the bacterial phenotype. *Antimicrob. Agents Chemother.* **48** (1), 1503-1508 (2004).
27. Achtman, M., *et al.* Six widespread bacterial clones among *Escherichia coli* K1 isolates. *Infect. Immun.* **39** (1), 315-335 (1983).
28. Mushtaq, N., Redpath, M.B., Luzio, J.P. & Taylor, P.W. Treatment of experimental *Escherichia coli* infection with recombinant bacteriophage-derived capsule depolymerase. *J. Antimicrob. Chemother.* **56** (5), 160-165 (2005).
29. Gross, R.J., Cheasty, T. & Rowe B. Isolation of bacteriophages specific for the K1 polysaccharide antigen of *Escherichia coli*. *J. Clin. Microbiol.* **6** (6), 548-550 (1977).

Figure 1
[Click here to download high resolution image](#)



Figure 2
[Click here to download high resolution image](#)

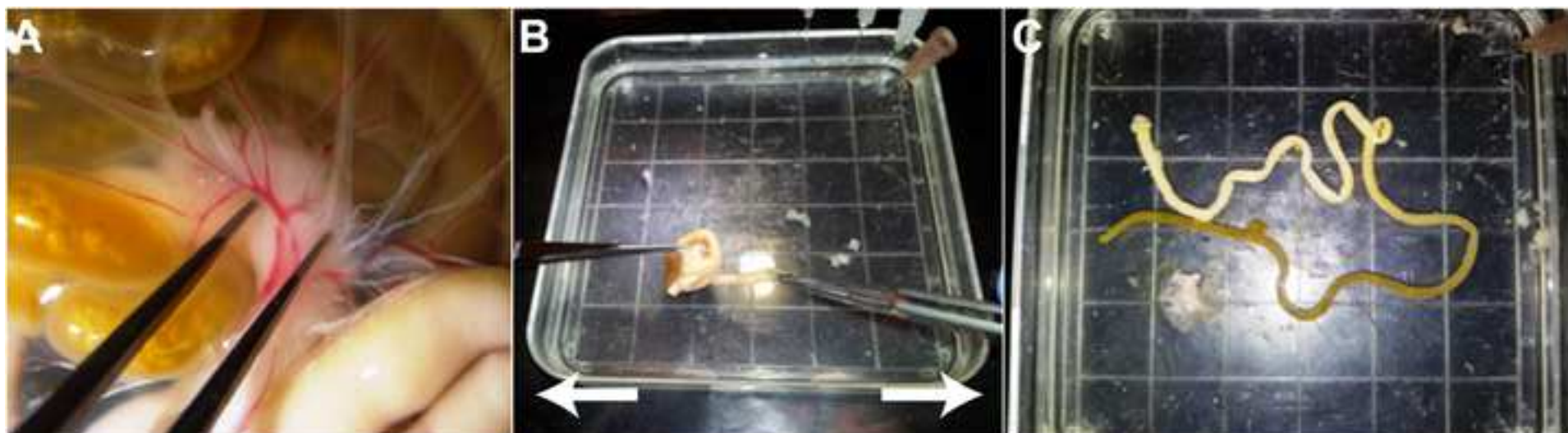


Figure 3
[Click here to download high resolution image](#)

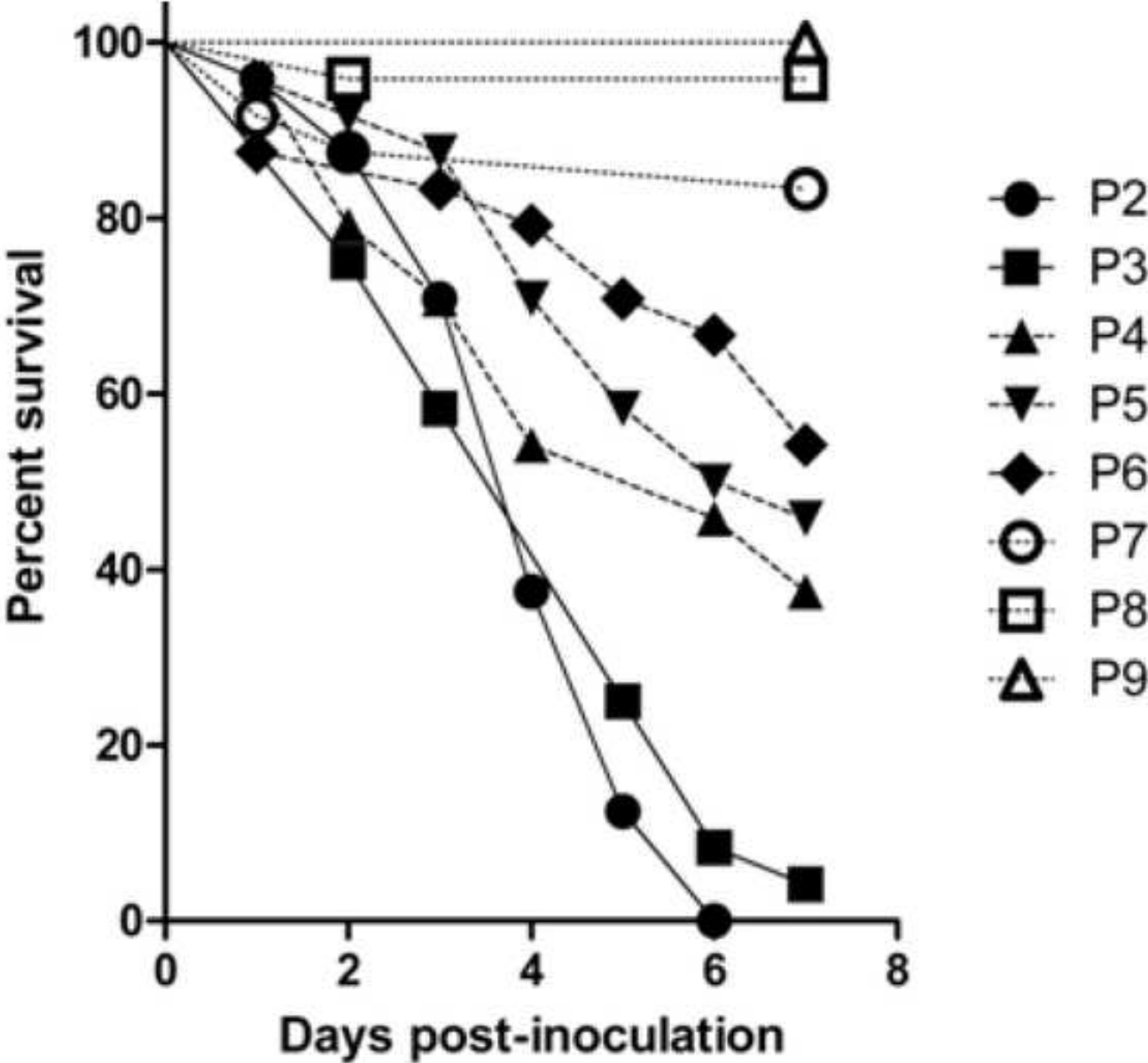


Figure 4

[Click here to download Figure: JoVE Figure 4.pptx](#)

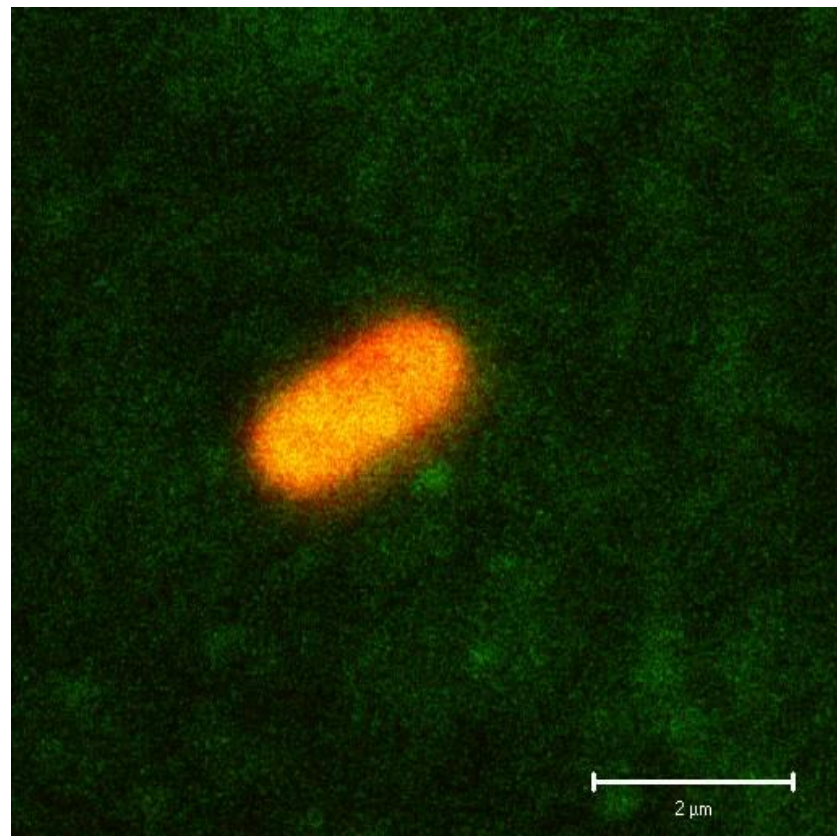
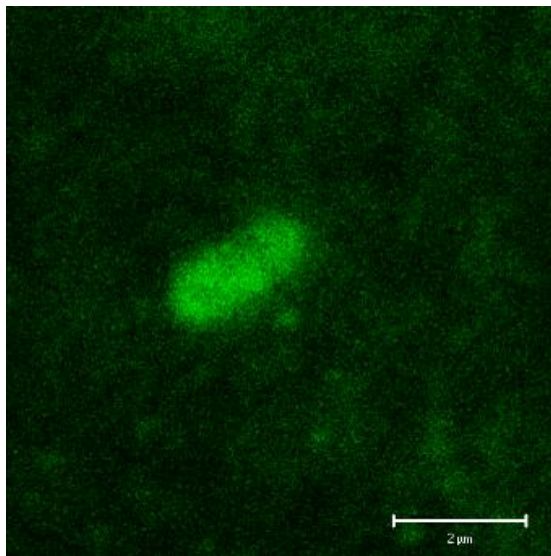
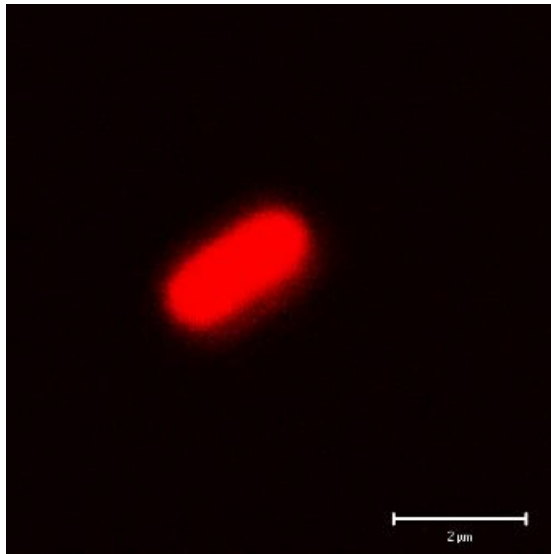
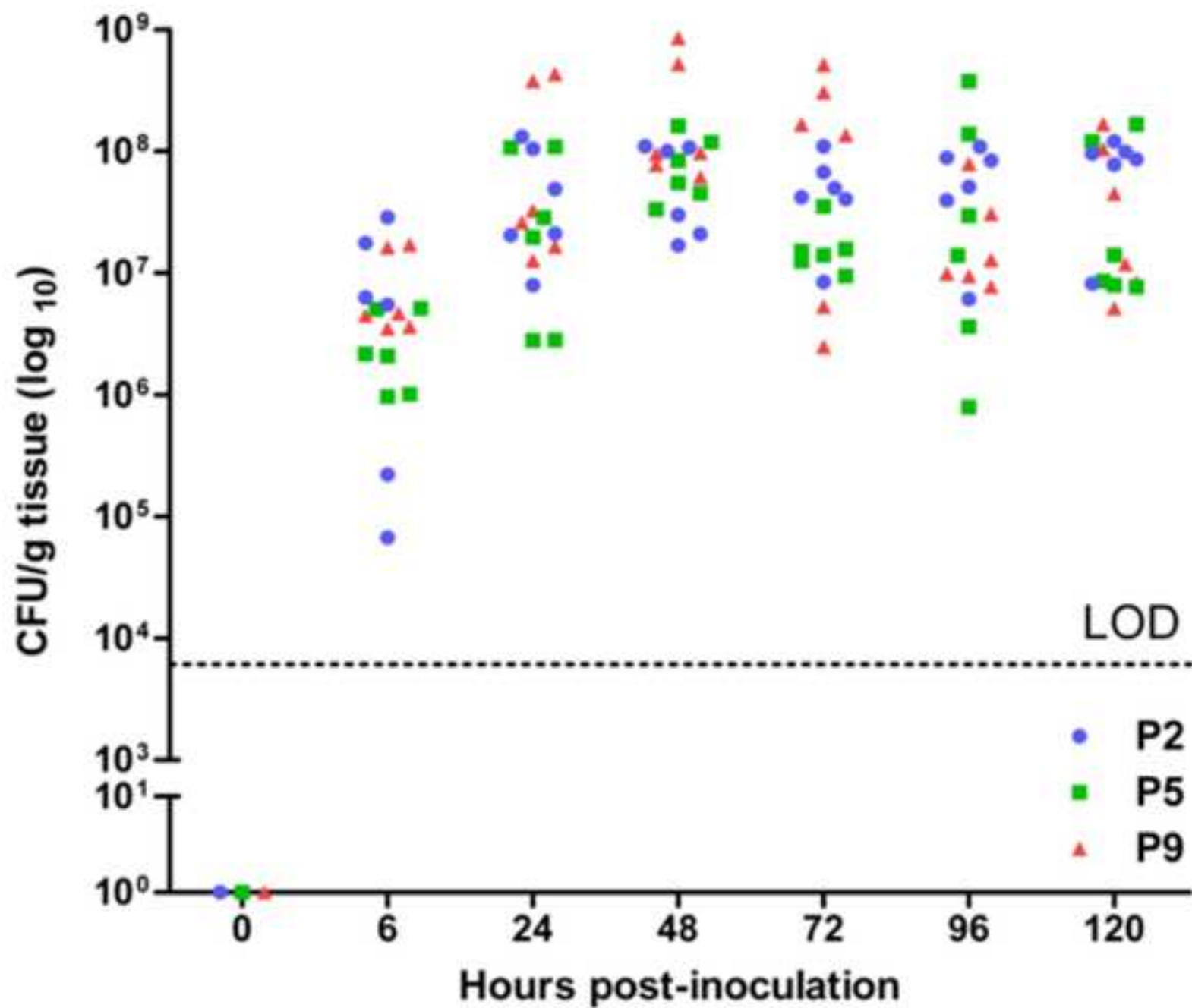


Figure 5
[Click here to download high resolution image](#)



Feature	Healthy
Colour of the skin	Pink
Agility (righting reflex)	Pup immediately reverses on backward placement
Gentle pressure on the abdomen	No sound
Stomach/milk line	Visible and white
Temperature	Warm
Weight	Gain of 1.5-2g per day
Behaviour when placed in cage	Moves towards mother and starts feeding

Unhealthy
Pale/Yellow
Difficulty in reversing backward placement (> 3 seconds) or cannot achieve
Sound of agitation
Not visible
Relatively cold*
No weight gain or weight loss
Cannot move towards mother and shows difficulty feeding

Name of Material/Equipment	Company
Pathogen-free Wistar rats (12 x neonate, 1 x lactating mother)	Harlan, UK
<i>E. coli</i> K1 A192PP	Taylor lab
Bacteriophage K1E	Taylor lab
Glycerol	Sigma, UK
Mueller-Hinton Agar	Oxoid, UK
Mueller-Hinton Broth	Oxoid, UK
MacConkey Agar	Oxoid, UK
Phosphate buffered saline (PBS)	Sigma, UK
Ethanol 100%	Sigma, UK
Heparin Sodium Salt	Sigma, UK
RNAlater Solution	Sigma, UK
Acetic Acid	Sigma, UK
Chloroform	Sigma, UK
Methanol	Sigma, UK
Cotton-tipped swabs	Fisher Scientific, UK
Alcotip Swabs	Scientific Laboratory Supplies, UK
Petri dishes	Sigma, UK
30mL Universal Tube	AlphaLaboratories, UK
0.5ml microcentrifuge tubes	StarLab, UK
1.5ml microcentrifuge tubes	StarLab, UK
0.1µl calibrated loops	StarLab, UK
L-shaped spreaders	StarLab, UK
Cuvettes	Fisher Scientific, UK
Forceps straight with fine points	Fisher Scientific, UK
Forceps straight with blunt tips	Fisher Scientific, UK
Forceps watchmaker's curved with very fine points	Fisher Scientific, UK
Scissors straight with very fine points	Fisher Scientific, UK
Laboratory Scissors	VWR, UK
25g Syringe Needles	Greiner Bio-One Ltd
LAMBDA 25 UV/Vis Spectrophotometers	PerkinElmer, UK
Unitemp Incubator	B&T, UK
Multitron shaking incubator	INFORS HT, UK
Ultra-Turrax T-10 homogenizer	IKA Werke

Web Address	Catalog number	Comments/Description
www.harlan.com		
www.ucl.ac.uk		Mushtaq <i>et al.</i> 2004
www.ucl.ac.uk		Mushtaq <i>et al.</i> 2004
www.sigmaaldrich.com	G5516	
www.oxoid.com	CM0337	
www.oxoid.com	CM0405	
www.oxoid.com	CM0007	
www.sigmaaldrich.com	P4417	
www.sigmaaldrich.com	E7023	
www.sigmaaldrich.com	84020	Prepare 20-50 units/ml
www.sigmaaldrich.com	R0901	10µl/mg tissue
www.sigmaaldrich.com	320099	
www.sigmaaldrich.com	C2432	
www.sigmaaldrich.com	322415	
www.fisher.co.uk	11542483	
www.scientificlabs.co.uk	SWA1000	
www.sigmaaldrich.com	P5856	
www.alphalabs.co.uk	CW3890	
www.starlab.co.uk	I1405-1500	
www.starlab.co.uk	I1415-1000	
www.starlab.co.uk	E1412-0112	
www.starlab.co.uk	E1412-1005	
www.fisher.co.uk	10594175	
www.fisher.co.uk	12780036	
www.fisher.co.uk	12391369	
www.fisher.co.uk	12740926	
www.fisher.co.uk	12972055	
www.vwr.com	USB4251	
www.greinerbioone.com	N2525	
www.perkinelmer.co.uk	L60000BB	
	OP958	
www.infors-ht.com	AJ118	
www.ika.com	0003737000	



1 Alewife Center #200
Cambridge, MA 02140
tel. 617.945.9051
www.jove.com

ARTICLE AND VIDEO LICENSE AGREEMENT

Title of Article: Non-invasive model of neuropathogenic E. coli
Author(s): Dalgatirvan, Witcomb, McCarthy, Brackman, Taylor

Item 1 (check one box): The Author elects to have the Materials be made available (as described at <http://www.jove.com/publish>) via: ☒ Standard Access ☐ Open Access

Item 2 (check one box):

- ☒ The Author is NOT a United States government employee.
☐ The Author is a United States government employee and the Materials were prepared in the course of his or her duties as a United States government employee.
☐ The Author is a United States government employee but the Materials were NOT prepared in the course of his or her duties as a United States government employee.

ARTICLE AND VIDEO LICENSE AGREEMENT

1. Defined Terms. As used in this Article and Video License Agreement, the following terms shall have the following meanings: “**Agreement**” means this Article and Video License Agreement; “**Article**” means the article specified on the last page of this Agreement, including any associated materials such as texts, figures, tables, artwork, abstracts, or summaries contained therein; “**Author**” means the author who is a signatory to this Agreement; “**Collective Work**” means a work, such as a periodical issue, anthology or encyclopedia, in which the Materials in their entirety in unmodified form, along with a number of other contributions, constituting separate and independent works in themselves, are assembled into a collective whole; “**CRC License**” means the Creative Commons Attribution-Non Commercial-No Derivs 3.0 Unported Agreement, the terms and conditions of which can be found at: <http://creativecommons.org/licenses/by-nc-nd/3.0/legalcode>; “**Derivative Work**” means a work based upon the Materials or upon the Materials and other pre-existing works, such as a translation, musical arrangement, dramatization, fictionalization, motion picture version, sound recording, art reproduction, abridgment, condensation, or any other form in which the Materials may be recast, transformed, or adapted; “**Institution**” means the institution, listed on the last page of this Agreement, by which the Author was employed at the time of the creation of the Materials; “**JoVE**” means MyJoVE Corporation, a Massachusetts corporation and the publisher of *The Journal of Visualized Experiments*; “**Materials**” means the Article and / or the Video; “**Parties**” means the Author and JoVE; “**Video**” means any video(s) made by the Author, alone or in conjunction with any other parties, or by JoVE or its affiliates or agents, individually or in collaboration with the Author or any other parties, incorporating all or any portion of the Article, and in which the Author may or may not appear.

2. Background. The Author, who is the author of the Article, in order to ensure the dissemination and protection of the Article, desires to have the JoVE publish the Article and create and transmit videos based on the Article. In furtherance of such goals, the Parties desire to memorialize in this Agreement the respective rights of each Party in and to the Article and the Video.

3. Grant of Rights in Article. In consideration of JoVE agreeing to publish the Article, the Author hereby grants to JoVE, subject to **Sections 4 and 7** below, the exclusive, royalty-free, perpetual (for the full term of copyright in the Article, including any extensions thereto) license (a) to publish, reproduce, distribute, display and store the Article in all forms, formats and media whether now known or hereafter developed (including without limitation in print, digital and electronic form) throughout the world, (b) to translate the Article into other languages, create adaptations, summaries or extracts of the Article or other Derivative Works (including, without limitation, the Video) or Collective Works based on all or any portion of the Article and exercise all of the rights set forth in (a) above in such translations, adaptations, summaries, extracts, Derivative Works or Collective Works and (c) to license others to do any or all of the above. The foregoing rights may be exercised in all media and formats, whether now known or hereafter devised, and include the right to make such modifications as are technically necessary to exercise the rights in other media and formats. If the “Open Access” box has been checked in **Item 1** above, JoVE and the Author hereby grant to the public all such rights in the Article as provided in, but subject to all limitations and requirements set forth in, the CRC License.

ARTICLE AND VIDEO LICENSE AGREEMENT

4. Retention of Rights in Article. Notwithstanding the exclusive license granted to JoVE in **Section 3** above, the Author shall, with respect to the Article, retain the non-exclusive right to use all or part of the Article for the non-commercial purpose of giving lectures, presentations or teaching classes, and to post a copy of the Article on the Institution's website or the Author's personal website, in each case provided that a link to the Article on the JoVE website is provided and notice of JoVE's copyright in the Article is included. All non-copyright intellectual property rights in and to the Article, such as patent rights, shall remain with the Author.

5. Grant of Rights in Video – Standard Access. This **Section 5** applies if the "Standard Access" box has been checked in **Item 1** above or if no box has been checked in **Item 1** above. In consideration of JoVE agreeing to produce, display or otherwise assist with the Video, the Author hereby acknowledges and agrees that, Subject to **Section 7** below, JoVE is and shall be the sole and exclusive owner of all rights of any nature, including, without limitation, all copyrights, in and to the Video. To the extent that, by law, the Author is deemed, now or at any time in the future, to have any rights of any nature in or to the Video, the Author hereby disclaims all such rights and transfers all such rights to JoVE.

6. Grant of Rights in Video – Open Access. This **Section 6** applies only if the "Open Access" box has been checked in **Item 1** above. In consideration of JoVE agreeing to produce, display or otherwise assist with the Video, the Author hereby grants to JoVE, subject to **Section 7** below, the exclusive, royalty-free, perpetual (for the full term of copyright in the Article, including any extensions thereto) license (a) to publish, reproduce, distribute, display and store the Video in all forms, formats and media whether now known or hereafter developed (including without limitation in print, digital and electronic form) throughout the world, (b) to translate the Video into other languages, create adaptations, summaries or extracts of the Video or other Derivative Works or Collective Works based on all or any portion of the Video and exercise all of the rights set forth in (a) above in such translations, adaptations, summaries, extracts, Derivative Works or Collective Works and (c) to license others to do any or all of the above. The foregoing rights may be exercised in all media and formats, whether now known or hereafter devised, and include the right to make such modifications as are technically necessary to exercise the rights in other media and formats. For any Video to which this Section 6 is applicable, JoVE and the Author hereby grant to the public all such rights in the Video as provided in, but subject to all limitations and requirements set forth in, the CRC License.

7. Government Employees. If the Author is a United States government employee and the Article was prepared in the course of his or her duties as a United States government employee, as indicated in **Item 2** above, and any of the licenses or grants granted by the Author hereunder exceed the scope of the 17 U.S.C. 403, then the rights granted hereunder shall be limited to the maximum rights permitted under such

statute. In such case, all provisions contained herein that are not in conflict with such statute shall remain in full force and effect, and all provisions contained herein that do so conflict shall be deemed to be amended so as to provide to JoVE the maximum rights permissible within such statute.

8. Likeness, Privacy, Personality. The Author hereby grants JoVE the right to use the Author's name, voice, likeness, picture, photograph, image, biography and performance in any way, commercial or otherwise, in connection with the Materials and the sale, promotion and distribution thereof. The Author hereby waives any and all rights he or she may have, relating to his or her appearance in the Video or otherwise relating to the Materials, under all applicable privacy, likeness, personality or similar laws.

9. Author Warranties. The Author represents and warrants that the Article is original, that it has not been published, that the copyright interest is owned by the Author (or, if more than one author is listed at the beginning of this Agreement, by such authors collectively) and has not been assigned, licensed, or otherwise transferred to any other party. The Author represents and warrants that the author(s) listed at the top of this Agreement are the only authors of the Materials. If more than one author is listed at the top of this Agreement and if any such author has not entered into a separate Article and Video License Agreement with JoVE relating to the Materials, the Author represents and warrants that the Author has been authorized by each of the other such authors to execute this Agreement on his or her behalf and to bind him or her with respect to the terms of this Agreement as if each of them had been a party hereto as an Author. The Author warrants that the use, reproduction, distribution, public or private performance or display, and/or modification of all or any portion of the Materials does not and will not violate, infringe and/or misappropriate the patent, trademark, intellectual property or other rights of any third party. The Author represents and warrants that it has and will continue to comply with all government, institutional and other regulations, including, without limitation all institutional, laboratory, hospital, ethical, human and animal treatment, privacy, and all other rules, regulations, laws, procedures or guidelines, applicable to the Materials, and that all research involving human and animal subjects has been approved by the Author's relevant institutional review board.

10. JoVE Discretion. If the Author requests the assistance of JoVE in producing the Video in the Author's facility, the Author shall ensure that the presence of JoVE employees, agents or independent contractors is in accordance with the relevant regulations of the Author's institution. If more than one author is listed at the beginning of this Agreement, JoVE may, in its sole discretion, elect not take any action with respect to the Article until such time as it has received complete, executed Article and Video License Agreements from each such author. JoVE reserves the right, in its absolute and sole discretion and without giving any reason therefore, to accept or decline any work submitted to JoVE. JoVE and its employees, agents and independent contractors shall have

ARTICLE AND VIDEO LICENSE AGREEMENT

full, unfettered access to the facilities of the Author or of the Author's institution as necessary to make the Video, whether actually published or not. JoVE has sole discretion as to the method of making and publishing the Materials, including, without limitation, to all decisions regarding editing, lighting, filming, timing of publication, if any, length, quality, content and the like.

11. **Indemnification.** The Author agrees to indemnify JoVE and/or its successors and assigns from and against any and all claims, costs, and expenses, including attorney's fees, arising out of any breach of any warranty or other representations contained herein. The Author further agrees to indemnify and hold harmless JoVE from and against any and all claims, costs, and expenses, including attorney's fees, resulting from the breach by the Author of any representation or warranty contained herein or from allegations or instances of violation of intellectual property rights, damage to the Author's or the Author's institution's facilities, fraud, libel, defamation, research, equipment, experiments, property damage, personal injury, violations of institutional, laboratory, hospital, ethical, human and animal treatment, privacy or other rules, regulations, laws, procedures or guidelines, liabilities and other losses or damages related in any way to the submission of work to JoVE, making of videos by JoVE, or publication in JoVE or elsewhere by JoVE. The Author shall be responsible for, and shall hold JoVE harmless from, damages caused by lack of sterilization, lack of cleanliness or by contamination due to the making of a video by JoVE its employees, agents or independent contractors. All sterilization, cleanliness or decontamination procedures shall be solely the responsibility of the Author and shall be undertaken at the Author's

expense. All indemnifications provided herein shall include JoVE's attorney's fees and costs related to said losses or damages. Such indemnification and holding harmless shall include such losses or damages incurred by, or in connection with, acts or omissions of JoVE, its employees, agents or independent contractors.

12. **Fees.** To cover the cost incurred for publication, JoVE must receive payment before production and publication the Materials. Payment is due in 21 days of invoice. Should the Materials not be published due to an editorial or production decision, these funds will be returned to the Author. Withdrawal by the Author of any submitted Materials after final peer review approval will result in a US\$1,200 fee to cover pre-production expenses incurred by JoVE. If payment is not received by the completion of filming, production and publication of the Materials will be suspended until payment is received.

13. **Transfer, Governing Law.** This Agreement may be assigned by JoVE and shall inure to the benefits of any of JoVE's successors and assignees. This Agreement shall be governed and construed by the internal laws of the Commonwealth of Massachusetts without giving effect to any conflict of law provision thereunder. This Agreement may be executed in counterparts, each of which shall be deemed an original, but all of which together shall be deemed to be one and the same agreement. A signed copy of this Agreement delivered by facsimile, e-mail or other means of electronic transmission shall be deemed to have the same legal effect as delivery of an original signed copy of this Agreement.

A signed copy of this document must be sent with all new submissions. Only one Agreement required per submission.

CORRESPONDING AUTHOR:

Name: PETER TAYLOR
Department: SCHOOL OF PHARMACY
Institution: UNIVERSITY COLLEGE LONDON
Article Title: Non-invasive model of neuropathogenic E. coli
Signature: [Signature] Date: 28.2.14

Please submit a signed and dated copy of this license by one of the following three methods:

- 1) Upload a scanned copy of the document as a pdf on the JoVE submission site;
- 2) Fax the document to +1.866.381.2236;
- 3) Mail the document to JoVE / Attn: JoVE Editorial / 1 Alewife Center #200 / Cambridge, MA 02139

For questions, please email submissions@jove.com or call +1.617.945.9051

Dear Dr Nguyen,

Thank you for providing us with the opportunity to respond to the reviewers' comments. We have addressed the issues raised as follows:

Science Editor

1. I have proofread the manuscript and made a small number of changes to ensure grammatical consistency (American vs English).
2. Long Abstracts are now compatible.
3. As I indicated in my earlier revision, the equipment referred to in section 2 is not a centrifuge but an orbital shaker for cultivation of bacteria. The objective is not to apply centrifugal force but to continuously mix the bacteria and growth medium. Therefore, reference to 200 rpm is correct and follows convention.
4. I have moved the Notes in Section 2 and Section 4 into the Discussion and the reference list adjusted accordingly.
5. The neonatal pups are not anesthetized. Neonatal rats do not respond to commonly used anesthetics in the same way as adults. The method of killing that we use is the quickest and most humane as determined by us over fifteen years of usage of this animal model and has been fully accepted by our national regulatory body, the UK Home Office, through issuance of current and prior licenses.
6. See above.

Reviewer #1

1. *Organ infection*: the first paragraph of the **Representative Results** section describes in detail our data on the invasion of organs, in particular CNS structures including the brain leptomeninges and we include references (now 24 and 25) highlighting the large quantitative body of work that we generated. I have emphasized this in the section as follows –“....before establishing organ-specific disease with associated inflammation of the brain.” We continue to work on the transit from gut to blood to CNS and I am currently drafting a manuscript in which we carefully dissect the precise regions of the gut and associated lymphatic system to confirm and extend Achtman's observations from the 1980s that the bacteria access the blood compartment via the mesenteric lymph nodes. We model meningitis, as the reviewer notes, but CNS infection is preceded by septicemia and sepsis, and is a suitable model to investigate these aspects in the neonate, as I have tried to emphasize in the text.
2. *Sampling*: We are aware of the possibility of bacterial contamination at the blood collection site and we prepare the animal such that we eliminate this problem. This was not clear from the protocol so I have added the following sentence into section 6.2 – “Sterilize the neck region of the neonate with an alcohol swab.” In fifteen years, we have never experienced a problem with contamination of our blood or organ samples. Whilst developing the optimized model we report here, we did investigate cardiac puncture but the neonatal

animals are small and we determined that this procedure was less efficient than the method we adopted; insufficient quantities of blood were obtained by cardiac puncture. We are aware of the literature with respect to quantification of bacterial translocation across the gut epithelium and we have quantified the intracellular and extracellular bioburden using the gentamicin protection assay, which we will report soon. When I accepted the invitation to produce a manuscript for JoVE, I was asked to focus on methodological detail rather than report experiments involving use of the model; our papers, cited at length in the manuscript, highlight the utility of the model in experimental therapy and prevention of infection as well as a procedure for increasing our understanding of the molecular pathogenesis of *E. coli* K1 systemic infection.

3. *Translocation from gut to blood to brain*: We have quantified in temporal fashion bacteria in the intestinal lumen, the blood compartment and the brain and this substantial body of work is referenced in the manuscript. We have recently focused on the dynamics of gut colonization in reference 17 (Birchenough GMH, Johansson MEV, Stabler RA, Dalgakiran F, Hansson GC, Wren BW, Luzio JP & Taylor PW. 2013. Altered innate defenses in the neonatal gastrointestinal tract in response to colonization by neuropathogenic *Escherichia coli*. *Infection and Immunity* **81**:3264-3275) but feel that reporting similar work in the current manuscript is beyond the scope of our JoVE remit. We have provided convincing evidence (also referenced in the manuscript) that *E. coli* K1 bacteria enter the CNS predominantly through the epithelial barrier of the choroid plexus and not across the more formidable brain endothelium, for which there is little convincing evidence in experimental neonatal animal models as opposed to endothelial cell culture. Again, I believe these experimental elements to be outside our remit of providing a detailed description of the procedure that we have employed.
4. *Gastric gavage*: Gavage was employed by Glode et al in their seminal 1978 paper in *Infection and Immunity* but the technique was modified to feeding of the culture by Achtman's group in a study reported in 1983 because they found that gavage caused damage to mucosa and they collected evidence that bacteria were exploiting this damage to directly access the blood circulation prior to colonization. This is discussed in the manuscript. We adopted the Achtman modification from the outset and we have experienced no problems with respect to reproducibility of colonization. We are currently undertaking a study involving μ CT-IVIS imaging of bacteria *in situ* in the neonatal model and find the bioluminescence signal restricted to the stomach after feeding of the culture. The pups react if fluid enters the lungs and we would immediately cull the animal if this occurred. We are practised in the culture feeding procedure and we very rarely, if ever, encounter problems with administration of the bacteria. Feeding closely approximates the natural route of infection and is the least invasive procedure we are aware of.
5. *Illness score*: We developed this scoring system as requested by our animal licensing authority to ensure that minimal pain is inflicted on the animals. The procedure was developed over a period of two years, is a comprehensive scale and we report it in the hope that others will adopt it as a humane procedure. The Home Office is satisfied that use of the scale reduces animal suffering. Reviewer #4 believes the illness assessment criteria to be very clear.
6. *Figure 4*: We do not claim that the bacteria in this image are located within phagocytes; in fact, we have provided evidence (refs 24 and 28) that the bacteria are predominantly

extracellular within the blood compartment due to the anti-phagocytic nature of the K1 capsule. As indicated in the text, we show the figure to illustrate that capsule-expressing bacteria can be visualized in this body compartment.

7. *Paneth cells*: We are aware of the literature in this area and we have contributed ourselves to the role of these cells and their antimicrobial peptide products (see reference 17). We have employed the neonatal infection model to further elucidate the role of Paneth cells by chemically reducing their prevalence through administration of dithizone. Resistance to infection is not only determined by sufficient production of these peptides but also by maturation of structures such as the mucin layer. I assumed that a detailed discussion of the molecular pathogenesis of *E. coli* K1 infection was outside the JoVE remit.
8. *Title*: *E. coli* K1 strains are frequently referred to in the literature as “neuropathogenic” (as they are associated with infections of the CNS) and we follow this convention. The word is used to describe the strains and not the condition so it is appropriate in this context.
9. *Statistical analyses*: As indicated in the text, we use each litter of 12 pups as a single test cohort as we are unable to separate pups from a single litter into different groups. We have performed power calculations using G* Power Software and determined that this sample size equates to a 98.6% probability of finding an effect based on survival using six animals from this cohort and >99% probability if all twelve are taken into consideration. I have altered the text in **Representative Results** to reflect this.

Reviewer #2

1. *General Comment*: We have briefly described the procedure in the paper cited and in our other papers in this field but we have never entered into the detail of the procedure in the fashion described in the JoVE manuscript.
2. *Short abstract*: We established the route of transit of *E. coli* K1 from gut to brain in studies cited in the current manuscript.
3. *Site of gut colonization*: We have obtained strong evidence, which we have yet to publish, that the primary site of translocation from gut to lymph is the mid-section of the small intestine but the reviewer’s point is well taken; I have therefore removed the phrase “....the appropriate site in....”.
4. *Transit*: We have reported these data in other publications, which are referenced in the text.
5. *Bacterial load*: the inoculum used ($4-8 \times 10^6$) produces 100% colonization and 100% systemic infection; lower inocula (e.g. 10^4) result in colonization and infection but not always at the 100% level. Our animal regulators insist that we use the procedure that results in minimal redundancy and the inoculum we use satisfies this criterion.
6. *Stress*: Our procedure is minimally invasive and produces little stress – the only intervention is feeding of a culture of bacteria, which the pups willingly receive. There are no repeated manipulations. We did undertake some experiments where we had to separate the pups from the mother rat and this induced stress that increased rates of infection, so we are aware of this issue, and now avoid such experiments.
7. *Separation of the GI tract*: This procedure will be shown in the video and will hopefully become very clear.

8. *Controls*: As stated, control animals receive sterile MH broth. Only *E. coli* K1 strains produce the unusual pathology we describe, so there is not an exact bacterial control. We have, however, established that *E. coli* K12 colonizes but does not produce systemic infection and this is reported in reference 17.

Reviewer #3

We have refined and optimized the procedures evolved by others, cited in the manuscript, and we have not, up till now, described this method in such detail.

Reviewer #4

1. *Dissemination*: We describe the procedures we used in our work in this area. We have reported extensively on the bioburden in various organs and body compartments and this work is fully referenced in the manuscript.
2. *Bacteremia*: Again, fully reported by us, for example references 24 and 25.
3. *Table 1*: We use this solely to ensure the work is undertaken with maximum caution for inflicting minimum pain and there are no results to describe.
4. *Inflammation*: We established this in prior studies that are fully referenced in the manuscript (e.g., reference 24).

I have tried to incorporate as many of the helpful comments from the reviewers as possible and that the revised manuscript is acceptable to The Editors. Because I have undertaken extensive modifications, I have included a version where I have highlighted the changes (in addition to the “track changes” version) for ease of review.