

Journal of Visualized Experiments

In vitro pancreas organogenesis from dispersed mouse embryonic progenitors

--Manuscript Draft--

Manuscript Number:	JoVE51725R1
Full Title:	In vitro pancreas organogenesis from dispersed mouse embryonic progenitors
Article Type:	Invited Methods Article - JoVE Produced Video
Keywords:	Pancreas, Progenitors, Branching Epithelium, Development, Organ Culture, 3D Culture, Diabetes, Differentiation, Morphogenesis, Cell organization, Beta Cell, self-organization
Manuscript Classifications:	1.10.336.645: Pancreas, Exocrine; 1.10.802: Organoids; 1.11.251.800: Spheroids, Cellular; 1.11.31: Acinar Cells; 1.11.382: Endocrine Cells; 1.11.436: Epithelial Cells; 1.16.254: Embryo, Mammalian; 1.16.504.407: Endoderm; 2.1.50.150.900.649.865.635.505.500: Mice; 95.51.8: bioengineering (general)
Corresponding Author:	Anne Grapin-Botton University of Copenhagen Copenhagen N, DENMARK
Corresponding Author Secondary Information:	
Corresponding Author E-Mail:	anne.grapin-botton@sund.ku.dk
Corresponding Author's Institution:	University of Copenhagen
Corresponding Author's Secondary Institution:	
First Author:	Chiara Greggio
First Author Secondary Information:	
Other Authors:	Chiara Greggio Filippo De Franceschi Manuel Figueiredo-Larsen
Order of Authors Secondary Information:	
Abstract:	<p>The pancreas is an essential organ that regulates glucose homeostasis and secretes digestive enzymes. Research on pancreas embryogenesis has led to the development of protocols to produce pancreatic cells from stem cells. The whole embryonic organ can be cultured at multiple stages of development. These culture methods have been useful to test drugs and to image developmental processes. However the expansion of the organ is very limited and morphogenesis is not faithfully recapitulated since the organ flattens.</p> <p>We propose three-dimensional (3D) culture conditions that enable the efficient expansion of dissociated mouse embryonic pancreatic progenitors. By manipulating the composition of the culture medium it is possible to generate either hollow spheres, mainly composed of pancreatic progenitors expanding in their initial state, or, complex organoids which progress to more mature expanding progenitors and differentiate into endocrine, acinar and ductal cells and which spontaneously self-organize to resemble the embryonic pancreas.</p> <p>We show here that the in vitro process recapitulates many aspects of natural pancreas development. This culture system is suitable to investigate how cells cooperate to form an organ by reducing its initial complexity to few progenitors. It is a model that reproduces the 3D architecture of the pancreas and that is therefore useful to study morphogenesis, including polarization of epithelial structures and branching. It is also appropriate to assess the response to mechanical cues of the niche such as stiffness and the effects on cell's tensegrity.</p>

Author Comments:	<p>We have revised the manuscript according to the reviewers' comments and thank them for their work.</p> <p>With regards to the movie files, we are including 3 different movie files corresponding to the same movie, hoping that one will be usable. Please use only one.</p>
Additional Information:	
Question	Response

FACULTY OF HEALTH SCIENCES
UNIVERSITY OF COPENHAGEN

Anne Grapin-Botton
DanStem
University of Copenhagen
Blegdamsvej 3B
DK-2200 Copenhagen N
Denmark
anne.grapin-botton@sund.ku.dk



26 NOVEMBER 2013

Dear Dr. Singh,

THE DANISH STEM CELL CENTER
(DANSTEM)

We are submitting a revised version of our article entitled “**In vitro pancreas organogenesis from dispersed mouse embryonic progenitors**” for your consideration for publication in JoVE.

UNIVERSITY OF COPENHAGEN
BLEGDAMSVEJ 3B
DK-2200 COPENHAGEN

All reviewers were overall very positive but made useful comments that will improve the manuscript. We are indicating in the rebuttal how we addressed their comments as well as the editorial comments.

DIR +45 35327300

We look forward to hearing your thoughts about the suitability of our manuscript for publication in JoVE.

Yours sincerely,

Anne Grapin-Botton.

TITLE: In vitro pancreas organogenesis from dispersed mouse embryonic progenitors

AUTHORS:

Greggio, Chiara^{1*}

¹Ecole Polytechnique Fédérale de Lausanne, School of Life Sciences, Swiss Institute for Experimental Cancer Research, Lausanne, Switzerland, chiara.greggio@unil.ch

De Franceschi, Filippo^{1*}

¹Ecole Polytechnique Fédérale de Lausanne, School of Life Sciences, Swiss Institute for Experimental Cancer Research, Lausanne, Switzerland, filippo.defranceschi@rd.nestle.com

Figueiredo-Larsen, Manuel^{2*}

²DanStem, University of Copenhagen, 3B Blegdamsvej, DK-2200 Copenhagen N, Denmark, manuel.figueiredo@sund.ku.dk

Gräpin-Botton, Anne^{1,2}

¹Ecole Polytechnique Fédérale de Lausanne, School of Life Sciences, Swiss Institute for Experimental Cancer Research, Lausanne, Switzerland.

and

²DanStem, University of Copenhagen, 3B Blegdamsvej, DK-2200 Copenhagen N, Denmark, anne.grapin-botton@sund.ku.dk

* Equal contribution

CORRESPONDING AUTHOR:

Gräpin-Botton, Anne

DanStem, University of Copenhagen, 3B Blegdamsvej, DK-2200 Copenhagen N, Denmark, anne.grapin-botton@sund.ku.dk

Tel +45 21 15 28 63

KEYWORDS:

Pancreas, Progenitors, Branching Epithelium, Development, Organ Culture, 3D Culture, Diabetes, Differentiation, Morphogenesis, Cell organization, Beta Cell.

SHORT ABSTRACT:

The three-dimensional culture method described in this protocol recapitulates pancreas development from dispersed embryonic mouse pancreas progenitors, including their substantial expansion, differentiation and morphogenesis into a branched organ. This method is amenable to imaging, functional interference and manipulation of the niche.

LONG ABSTRACT:

The pancreas is an essential organ that regulates glucose homeostasis and secretes digestive enzymes. Research on pancreas embryogenesis has led to the development of protocols to produce pancreatic cells from stem cells¹. The whole embryonic organ can be cultured at multiple stages of development²⁻⁴. These culture methods have been useful to test drugs and to image developmental processes. However the expansion of the organ is very limited and morphogenesis is not faithfully recapitulated since the organ flattens.

We propose three-dimensional (3D) culture conditions that enable the efficient expansion of dissociated mouse embryonic pancreatic progenitors. By manipulating the composition of the culture medium it is possible to generate either hollow spheres, mainly composed of pancreatic progenitors expanding in their initial state, or, complex organoids which progress to more mature expanding progenitors and differentiate into endocrine, acinar and ductal cells and which spontaneously self-organize to resemble the embryonic pancreas.

We show here that the *in vitro* process recapitulates many aspects of natural pancreas development. This culture system is suitable to investigate how cells cooperate to form an organ by reducing its initial complexity to few progenitors. It is a model that reproduces the 3D architecture of the pancreas and that is therefore useful to study morphogenesis, including polarization of epithelial structures and branching. It is also appropriate to assess the response to mechanical cues of the niche such as stiffness and the effects on cell's tensegrity.

INTRODUCTION:

Organ culture provides a useful model that bridges the gaps between the complex but highly relevant *in vivo* investigations and the convenient but approximate simulation of cell line models. In the case of the pancreas, there is no cell line perfectly equivalent to pancreas progenitors although there are transformed cell lines simulating endocrine and exocrine cells. The adult whole pancreas cannot be cultured; isolated endocrine islets can be maintained for few weeks without cell proliferation and tissue slices can be kept *in vitro* for few hours⁵. Embryonic pancreas culture has been widely used not only to study its development, but also to investigate epithelial-mesenchymal interactions^{4,6,7}, to image processes⁸ or to chemically interfere with them⁹. Two organ culture methods are mainly used: the first consists in culturing pancreatic buds on fibronectin coated plates², which is convenient for imaging purposes; the second option is to culture the organs on filters at the air-liquid interface^{3,4} which best preserves morphogenesis. Although very useful, these methods lead to a certain degree of flattening; the expansion of progenitors is very limited as compared to the normal development and the starting population is complex comprising all types of pancreatic cells and mesenchymal cells.

The ability to culture and expand dispersed primary cells is valuable to study lineage relationships and uncover the intrinsic properties of isolated cell types¹⁰. Sugiyama et al.¹¹ could maintain pancreas progenitors and endocrine progenitors that retained some functional characters for 3-5 days in culture on feeder layers. Pancreatospheres, akin to neurospheres¹² and mammospheres¹³, have been expanded from adult islets and ductal cells although the nature of the progenitors/stem cells that generate these spheres is not clear. In addition, in contrast with physiological development, the pancreatospheres contained some neurons^{14,15}. Spheres were also recently produced from embryonic pancreas progenitors^{16,17} and regenerating pancreata¹⁸

with good progenitor expansion and subsequent differentiation but failed to recapitulate morphogenesis.

3D models from dispersed and often defined cells that self-organize into miniaturized organs have recently flourished and simulate the development or adult turnover of multiple organs such as the intestine^{19,20}, the stomach²¹, the liver²², the prostate²³ and the trachea²⁴. In some instances, developmental morphogenesis and differentiation have been recapitulated in 3D from ES cells, as is the case of optic cups²⁵, intestine²⁶ or brain²⁷.

Here, we describe a method to expand dissociated multipotent pancreatic progenitors in a 3D Matrigel scaffold where they can differentiate and self-organize.

PROTOCOL

This protocol aims to grow pancreatic organoids derived from murine E10.5 dissociated epithelial pancreatic cells.

The protocol requires ethical approval for animal experimentation.

1. Dissection of Dorsal Pancreatic Bud from E10.5 mouse embryos

1.1) Sacrifice timed-pregnant mice at embryonic day (E) 10.5, open the abdomen with a pair of scissors, remove the two uterine horns and place them in a 10 cm Petri dish filled with cold phosphate buffer saline (PBS) or Dulbecco modified essential medium (DMEM) kept on ice. The total experiment from the sacrifice to cell seeding is done in 60-90 min to prevent cell damage.

1.2) Separate the uterus into individual embryo segments using small scissors. Transfer one embryo to a 35 mm Petri dish with cold PBS and visualize it under a dissecting microscope with illumination from above. With dissection forceps remove the surrounding muscle, decidua and yolk sac and expose the embryo. Place the embryo back into cold DMEM medium. Embryos can easily be transferred using a 3 ml plastic transfer pipette/dropper. Isolate every individual embryo in a similar manner before continuing.

1.3) Place an embryo into a clean 35 mm Petri dish in PBS.

1.3.1) Use thin forceps (0.05 mm width) to remove the forelimb. Gently insert the forceps in the opening to detach the digestive tract from the spinal cord region (Figure 1). OPTIONAL: To more conveniently see the stomach, remove the upper body of the embryo, down to the heart and the tail region below the yolk stalk.

1.3.2) Locate the stomach, liver and intestine. Using the forceps, isolate the gastrointestinal tract from the stomach to the intestine and place it in cold DMEM on ice (Figure 1). The dorsal pancreatic bud is attached dorsally, posterior to the stomach (Figure 1).

1.3.3) Isolate every individual gastrointestinal tract in a similar manner before continuing. If the embryos need to be genotyped, collect the tail at the time of dissection and keep every individual gastrointestinal tract in a different well in a 24-well plate with cold DMEM on ice.

1.4) Place one gastrointestinal tract in a clean 35 mm Petri dish in cold PBS. Now use illumination from below in bright field to visualize and dissect the dorsal pancreatic bud under the dissection microscope. These conditions will optimize the visualization of volumes. Using electrolytically-sharpened tungsten needles or 20G syringe needles, isolate the pancreatic bud with as little mesenchyme as possible around the epithelium (Figure 1).

1.4.1) Transfer the isolated bud into a petri dish containing a cold dispase solution (1.25 mg/ml) for 2-3 min. From this point, transfer can most conveniently be done with flame-pulled 50 μ l glass capillaries attached to a mouth-controlled flexible tube. Alternatively, but with more risk of losing the bud, use a 10 μ l automatic pipette (Pipetman) with appropriate plastic tip.

1.4.2) Perform pancreatic bud aspiration and ejection under microscopic control. Put the pancreatic bud back in PBS. Further clean the isolated pancreatic bud from the mesenchyme with the needles and gentle aspiration using the glass capillary (Figure 1).

1.4.3) When the entire mesenchyme is removed, rinse the pancreatic bud in cold PBS; transfer each bud to cold DMEM in individual wells (60-well mini-trays filled with 10 µl of cold DMEM). It is important not to remove the mesenchyme in disperse which makes the tissue very sticky.

2. Plating and culture of dispersed cells

2.1) Transfer the dissected epithelia from all embryos with a pipette into conical wells of 60-well mini-trays filled with 10 µl PBS for rinsing.

2.1.1) Transfer the bud into 10 µl of Trypsin 0.05 % and let it incubate at 37 °C for 4 min. Inactivate the trypsin by transferring the bud into a well with 10 µl DMEM + 10% fetal calf serum (FCS).

2.1.2) Dissociate the cell suspension by pipetting through a thin capillary pulled with a pipette puller. It is important to avoid bubbles at this stage while pipetting up and down to dissociate the cells. Pancreas organoids optimally start from small groups of 5-15 cells and therefore partial dissociation is recommended (Figure 1).

2.2) Pool the cells from several embryos into an Eppendorf tube in order to minimize differences due to individual processing. Dilute the cell suspension in chilled Matrigel at a 1:3 ratio. Aliquot this mixture to a 96 well plate, 8 µl/well or in a plate optimized for imaging (see below).

2.3) Incubate the plate at 37 °C for 5 min, allowing the Matrigel to thicken. Fill the wells with 70 µl of medium of choice (organoid or sphere, see table of specific material/equipment) and leave in a humidified environment containing 5% CO₂ and 95% air at 37 °C.

2.4) Replace the medium every 4th day. Monitor the growing pancreatic colonies daily and document the process by imaging.

2.5) Small molecules or proteins of interest can be added to the medium at this stage for interference experiments, as reported previously²⁸.

3. Imaging of the progression of organoid development

3.1) Image organoids either daily or by time lapse microscopy using a fluorescent time-lapse microscope. For time lapse imaging, use an XY(Z) automated inverted fluorescent microscope.

3.2) Deposit small droplets of 3 µl in 4-well plates or glass-bottom plates filled with 2-5 ml medium. Image with a 10x long distance objective. Note: Transgenic mice expressing fluorescent tracers can be used. Movie 1 shows for example the initial expansion of organoids

from Pdx1-Ngn3-ERTM-ires-nGFP⁺ mice⁴. The nuclear GFP enables the user to track cells as individual objects but similar principles can be applied to track cells with membrane fluorescence such as mT/mG mice²⁹.

3.3) Start time-lapse imaging 3 hours after seeding the cells to avoid focus drifts and set the software controlling automation to take 1 picture/hour for 3 or more days at manually defined positions. For every position, acquire a differential interference contrast (DIC) image as well as the GFP signal, reporting fluorescent marker expression.

4. Recovery of organoids for histology

4.1) Place the 96 well plate on ice and remove the medium, replacing it with ice cold PBS. This partially depolymerizes Matrigel.

4.2) Gently aspirate each individual organoid, removing the surrounding Matrigel using a 1000 µl tip in order to not disrupt the overall architecture. Transferred each organoid to a well on ice cold PBS. Direct fixation in Matrigel is also possible.

4.3) Fix the organoid for 15 minutes in 4% paraformaldehyde (PFA), cryopreserve it in sucrose and embed it in gelatin. Process each organoid for cryosectioning and histology as previously described (Johansson et al., 2007).

5. Recovery of organoids for PCR and biochemistry

5.1) Place the 96 well plate on ice and remove the medium. Add 60 µl of RNAlater per well in order to stabilize and protect cellular RNA.

5.2) Disrupt the gel in each well mechanically by partially depolymerizing it on ice. Either recover individual organoids using a 1000 µl tip in order to not disrupt the overall architecture or recover the entire well (with Matrigel) by disrupting the gel mechanically with a 200 µl tip. Use a 1000 µl tip to transfer the well content into an RNase free-non-sticky Eppendorf tube kept on ice.

5.3) Wash the wells with 60 µl RNAlater and add the remaining content to the same Eppendorf tube.

5.4) Spin the tubes for 5 min at 500-1000 g at 4 °C.

5.5) Remove the supernatant, only leaving 20-30 µl of RNAlater in the tube together with the pellet. For biochemistry, store the samples as dry as possible.

5.6) Do not freeze samples in RNAlater immediately; store at 4 °C overnight (to allow RNAlater to thoroughly penetrate the tissue). The tissue can be stored at -20 °C for long term storage and can later be processed for tissue disruption and extraction of small quantities of RNA.

REPRESENTATIVE RESULTS:

E10.5 dorsal pancreatic progenitors dissociated and seeded in 3D Matrigel recapitulate pancreas development. Progenitors can be most easily followed with fluorescent reporters. In our case we used a transgenic mouse that expresses a nuclear GFP protein controlled by *Pdx1* promoter (*Pdx1-Ngn3-ERTM-nGFP*) (movie 1) in the absence of tamoxifen and thus without activating Neurog3⁴ (Figure 2).

With the organoid medium, an initial compaction of small clusters of cells occurs in the first hours. Expansion can then be detected by the enlargement of the clusters in the first 4 days (Figure 2A). From day 5, branches form in the 20% largest organoids. Single cells do not expand and lose *Pdx1* expression while the large clusters retain *Pdx1* expression²⁸.

In these conditions, progenitors undergo a spectacular morphogenesis with the emergence of branched epithelial structures. This process takes place only when the progenitors are seeded in ≥ 4 -cells clusters, indicating a strong requirement for community signals. Histological analysis reveals that after day 7 of culture, the resulting mini-organs are composed of pancreatic progenitors (SOX9⁺/HNF1B⁺/*Pdx1*⁺ cells: Figure 3B) and differentiated cells expressing either exocrine (Amylase⁺) or endocrine (Insulin⁺ or Glucagon⁺) markers (Figure 3A,C). The differentiation into endocrine cells is lower than in the endogenous pancreas (around 0.1%) but is increased to 1% when FGF1 is not added to the culture medium²⁸. Remarkably, not only do the seeded progenitors differentiate into the expected pancreatic lineages, but they also spontaneously adopt the normal pancreatic architecture. Although E10.5 multipotent pancreas progenitors are not polarized, the cells in culture polarize as demonstrated by the segregation of Mucin1 and aPKC in the membrane facing the central lumen and they organize into a branched tubular network. Regionalized “tip and trunk” domains emerge: HNF1B⁺ progenitors and endocrine cells are localized in the central region, while acinar cells are located at the periphery as a partial or complete crown of cells. The organoids can be maintained in culture for 10 days; after this period, they generally lose their architectural organization and become cystic (not shown). Passing can be done after partial dissociation but quickly leads to cyst formation, a phenomenon that is reduced by the addition of the BMP inhibitor Noggin²⁸.

With the sphere medium, expansion is more frequent and is seen from 2% of single cells; nevertheless the efficiency of sphere formation correlates with the size of the seeded clusters²⁸. At day 2/3, a lumen is detected in the small clusters and expands thereafter, leading to largely mono-layered hollow spheres with occasional local multilayered areas (Figure 2B). These spheres collapse when retrieved from Matrigel (Figure 3D-H). Under these conditions, the resulting structures are mainly composed of pancreatic progenitors, with a small percentage of differentiated exocrine and endocrine cells at day 7 (Figure 3D-H). Progenitors in the spheres also become apically polarized, as demonstrated by the segregation of aPKC at the membrane facing the central lumen of all cells (Figure 3F). Pancreatospheres can be passaged at least twice (not shown).

Figure Legends:

Figure 1: Schematic representation of the procedure.

The gastro-intestinal tract is initially dissected from the embryo and subsequently the dorsal pancreatic bud is isolated. The mesenchyme is removed and the pancreatic progenitors are dissociated using trypsin. The resulting partially-dispersed cells are then seeded at low density in growth factor-depleted Matrigel. Scale bars: 1.00 mm except for the resulting organoid picture where the scale bar is 200 μ m.

Figure 2: Progress of culture over time.

A small cluster of pancreatic progenitors grown with the organoid medium and followed with time-lapse microscopy from 3 hr after plating, for 60 hrs. In the bottom panels, an organoid after 7 days of culture. Scale bar: 200 μ m applies to all panels in **A**. **B**. Example of a sphere followed in a 60 hrs time-lapse and captured at day 7 of culture. Scale bar: 200 μ m applies to all panels in **B**.

Figure 3: Histology.

A-C Serial sections of a 7-day organoid stained for progenitor (B – HNF1B) and differentiation (A – amylase, C- insulin) markers. The organoid is composed of epithelial (A – E-cadherin) and apically polarized (B – mucin1) cells. The dashed line corresponds to the non-acinar central region (A), where HNF1B (B) and endocrine (C) cells are detected. **D-H** Sections of 7-day spheres stained for progenitor (G – HNF1B; H – SOX9) and endocrine (D – insulin and glucagon) markers. The spheres are composed of apically polarized (D, F – aPKC) epithelial (E – E-cadherin) cells. Scale bar: 50 μ m.

DISCUSSION:

Large-scale production of functional beta cells *in vitro* is still ineffective¹. In this challenging context, developmental biology studies may help deciphering the exact signals that are required for the differentiation of functional beta cells. This protocol allows for the maintenance, expansion and differentiation of embryonic pancreatic progenitors *in vitro*. This includes the formation of insulin-producing beta cells that do not co-express other endocrine hormones, have high levels of Pdx1, express the pro-convertases that mature insulin and have the processed insulin²⁸. Important key factors within the system are the activity of FGF (exogenously stimulated by added FGF potentiated by heparin) and Notch (endogenous) signaling pathways, as well as ROCK-inhibition by Y-27632: in the absence of those factors, no or very limited numbers of organoids and spheres were generated²⁸. The requirement for FGF and Notch activity is easily understood based on their importance for pancreas development *in vivo*²⁸. ROCK inhibitor can be substituted by blebbistatin, thus revealing that hyperactivation of microfilament dynamics upon dissociation leads to both increased cell death, a strong inhibition of the progenitor transcription factor Pdx1 and a lack of expansion. Interestingly, many additional components of the organoid medium were proven to be individually unnecessary, but their combined absence resulted in the loss of epithelial branching²⁸. In addition to certain essential components of the medium, it is important to control the level of dissociation of progenitors. Indeed, progenitor proliferation and *Pdx1* maintenance are significantly promoted in groups of more than 4 cells. A compaction can be observed within the first 12 hours and failure

to compact results in failure to maintain *Pdx1* and expand. The ROCK inhibitor is essential for this process.

At the moment organoids do not form after FACS sorting but the efficiency of the system could potentially be improved by reaggregating a controlled number of progenitors. Another critical component of this culture system is the 3D matrix. Cells put on Matrigel or in the Matrigel too close to the bottom of the plate spread and lose *Pdx1* expression. Matrigel most likely provides biochemical components, notably laminin as well as mechanical cues²⁸. Indeed, the stiffness of the matrix plays a pivotal role. Stiff hydrogels are not permissive for pancreatic progenitors maintenance and expansion²⁸ and diluted Matrigel is not either. When Matrigel is diluted 1:10 pancreas progenitor cannot be cultured.

The organoid system can be used to test the effects of small molecules and recombinant proteins on pancreatic progenitors in terms of survival, proliferation, differentiation, polarization and branching²⁸. It can also be used to test the cooperation of different cell types during pancreas development²⁸. We are confident that the accessibility of pancreatic progenitor cells will also allow genetic manipulations, such as viral targeting, as seen in other organoid systems^{17,27}. This could be used for screening¹⁷ with a system that enables morphogenesis in contrast to the spheres described previously as well as here^{16,17,28}. The culture conditions we developed also present the advantage of being serum-free, feeder-free and devoid of mesenchyme and blood vessels thereby reducing the cellular and biochemical complexity. However, there is a limitation in the ability to passage the organoids and thus to obtain large quantities of progenitors. This could be circumvented in the future by adaptations of the protocol to later stages of development where progenitors are more abundant, to sources of pancreatic progenitors produced from embryonic stem (ES) cells or induced pluripotent stem (iPS) cells. This paves the way for a 3D model of human pancreas development.

This system can also potentially be used for the production of pancreatic cells in the future perspective of therapy. In this context, the production of functional beta cells for transplantation would potentially help in diabetes therapy. The adaptations of the system to human ES or iPS cells would be important for this purpose. It is still unclear whether the organoid or sphere conditions should be used. The organoid conditions allow for the production of cells that have several characteristics of mature beta cells but their function remains to be tested. However, these cells are currently not numerous and are mixed among other cells. It is also likely that the early appearance of heterogeneity in the organoid system leads to uncontrolled signaling between cells and is therefore detrimental to production.

The sphere system that maintains progenitors is in principle preferable for controlled expansion and passaging of progenitors but their subsequent differentiation remains to be controlled. Others have recently produced pancreatospheres that can be efficiently differentiated. It will be important to compare the nature of the spheres obtained in the current protocol devoid of feeders and serum to spheres obtained with the other protocols^{16,17}. From a therapeutic point of view, the complexity and biological origin of Matrigel may constitute an issue of reproducibility, health and scalability. Preliminary results have shown that soft hydrogels functionalized with laminin are permissive for pancreatic progenitor expansion *in vitro*. Further optimization is required as these gels are not yet as efficient as Matrigel²⁸.

The production of beta cells in their natural context could also potentially be useful to test drugs that boost beta cell activity or increase their survival or proliferation but for this purpose it will be important to first test the degree of maturity of the beta cells, to increase the efficiency of their differentiation and to first test whether the culture conditions presented here better maintain islets than the current suspension cultures. Producing the exocrine pancreas could also be useful to develop drugs to target pancreatic cancers and pancreatitis. Here again, the degree of maturity of the exocrine cells produced needs to be thoroughly investigated.

ACKNOWLEDGMENTS:

This work was funded sequentially by a NCCR Frontiers in Genetics pilot award, Juvenile Diabetes Research Foundation Grant 41-2009-775 and Grant 12-126875 from Det Frie Forskningsråd/Sundhed og Sygdom.

DISCLOSURES:

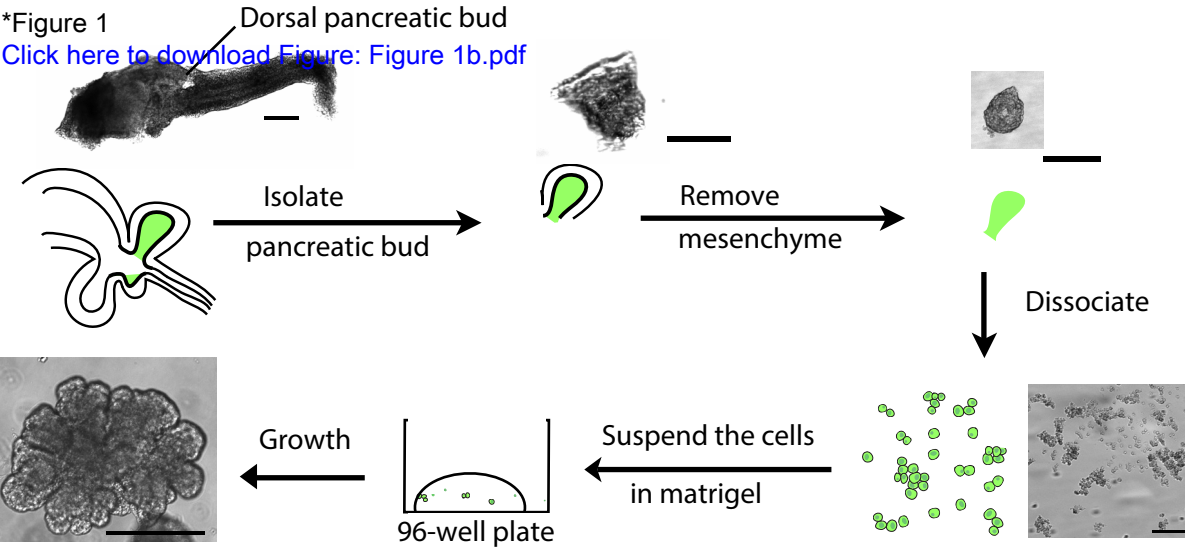
The authors have nothing to disclose.

REFERENCES

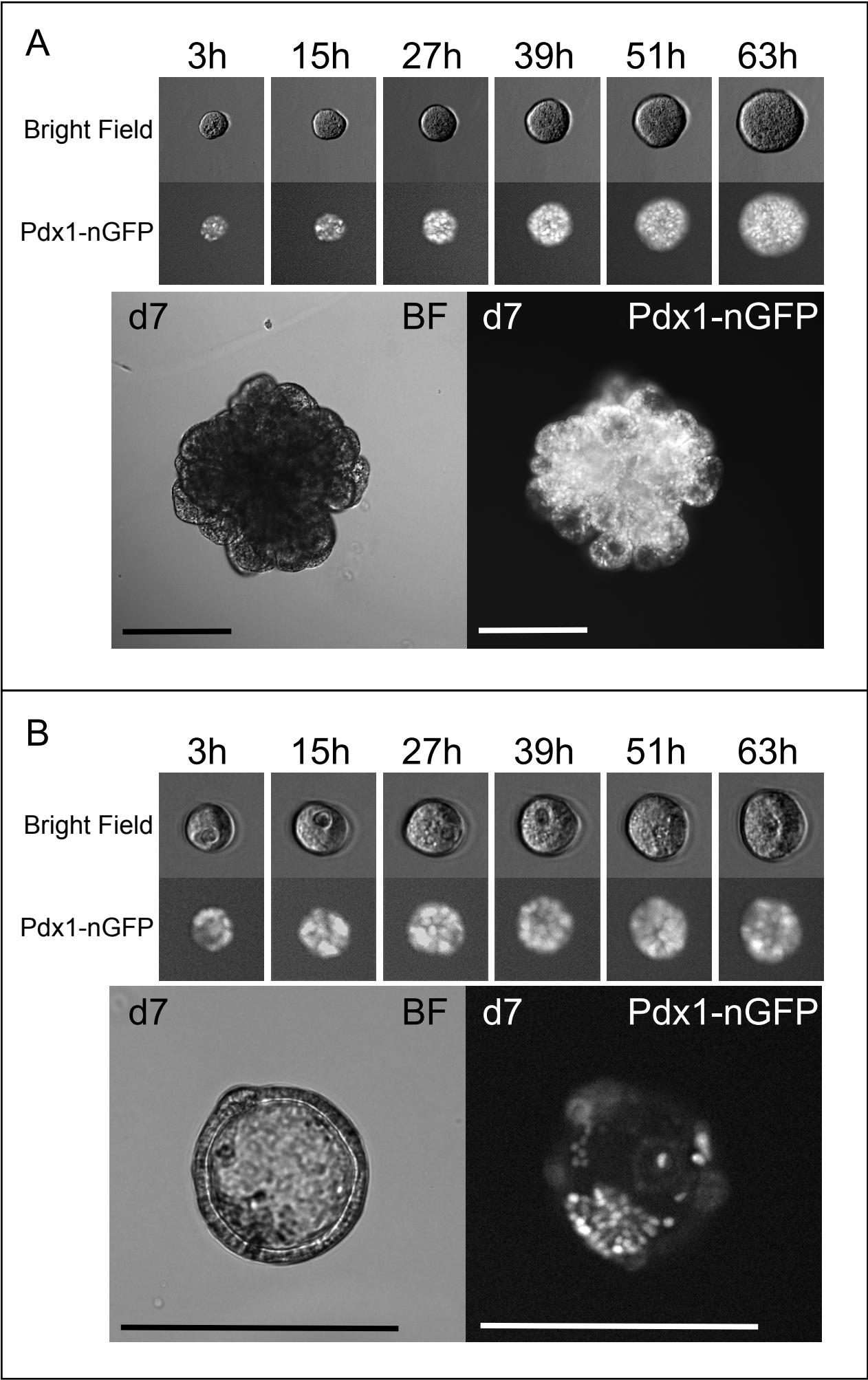
- 1 Pagliuca, F. W. & Melton, D. A. How to make a functional beta-cell. *Development* **140**, 2472-2483, doi:10.1242/dev.093187 (2013).
- 2 Percival, A. C. & Slack, J. M. Analysis of pancreatic development using a cell lineage label. *Exp Cell Res* **247**, 123-132, doi:10.1006/excr.1998.4322 (1999).
- 3 Attali, M. *et al.* Control of beta-cell differentiation by the pancreatic mesenchyme. *Diabetes* **56**, 1248-1258, doi:10.2337/db06-1307 (2007).
- 4 Johansson, K. A. *et al.* Temporal control of neurogenin3 activity in pancreas progenitors reveals competence windows for the generation of different endocrine cell types. *Dev Cell* **12**, 457-465, doi:10.1016/j.devcel.2007.02.010 (2007).
- 5 Speier, S. & Rupnik, M. A novel approach to in situ characterization of pancreatic beta-cells. *Pflugers Arch* **446**, 553-558, doi:10.1007/s00424-003-1097-9 (2003).
- 6 Golosow, N. & Grobstein, C. Epitheliomesenchymal interaction in pancreatic morphogenesis. *Dev Biol* **4**, 242-255 (1962).
- 7 Miralles, F., Czernichow, P. & Scharfmann, R. Follistatin regulates the relative proportions of endocrine versus exocrine tissue during pancreatic development. *Development* **125**, 1017-1024 (1998).
- 8 Petzold, K. M. & Spagnoli, F. M. A system for ex vivo culturing of embryonic pancreas. *Journal of visualized experiments : JoVE*, e3979, doi:10.3791/3979 (2012).
- 9 Miralles, F., Battelino, T., Czernichow, P. & Scharfmann, R. TGF-beta plays a key role in morphogenesis of the pancreatic islets of Langerhans by controlling the activity of the matrix metalloproteinase MMP-2. *J Cell Biol* **143**, 827-836 (1998).
- 10 Hope, K. & Bhatia, M. Clonal interrogation of stem cells. *Nat Methods* **8**, S36-40, doi:10.1038/nmeth.1590 (2011).
- 11 Sugiyama, T., Rodriguez, R. T., McLean, G. W. & Kim, S. K. Conserved markers of fetal pancreatic epithelium permit prospective isolation of islet progenitor cells by FACS. *Proc Natl Acad Sci U S A* **104**, 175-180 (2007).

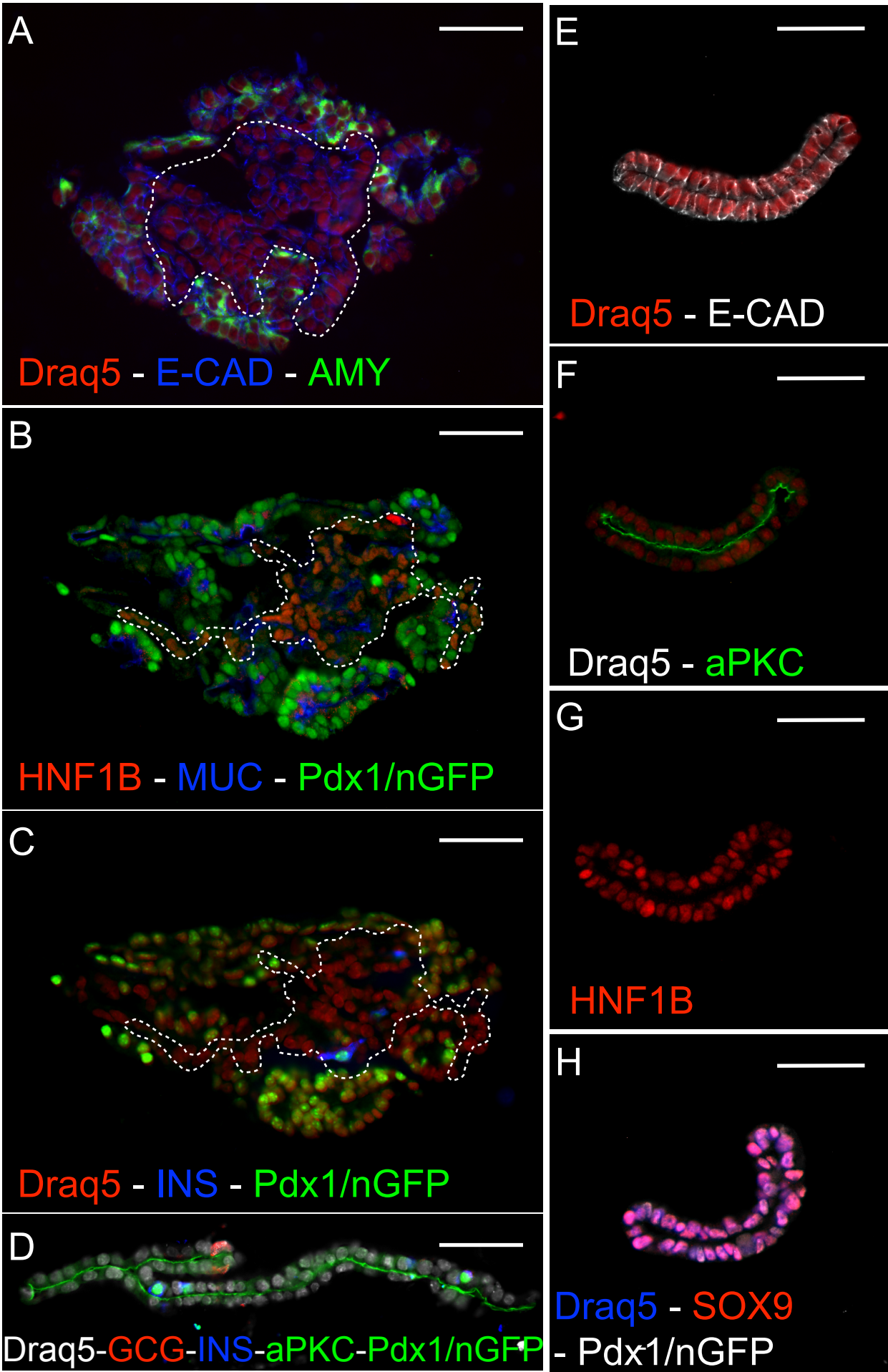
- 12 Reynolds, B. A. & Weiss, S. Generation of neurons and astrocytes from isolated cells of the adult mammalian central nervous system. *Science* **255**, 1707-1710 (1992).
- 13 Dontu, G. *et al.* In vitro propagation and transcriptional profiling of human mammary stem/progenitor cells. *Genes Dev* **17**, 1253-1270, doi:10.1101/gad.1061803 (2003).
- 14 Smukler, S. R. *et al.* The adult mouse and human pancreas contain rare multipotent stem cells that express insulin. *Cell Stem Cell* **8**, 281-293, doi:S1934-5909(11)00016-6 [pii] 10.1016/j.stem.2011.01.015 (2011).
- 15 Seaberg, R. M. *et al.* Clonal identification of multipotent precursors from adult mouse pancreas that generate neural and pancreatic lineages. *Nat Biotechnol* **22**, 1115-1124 (2004).
- 16 Jin, L. *et al.* Colony-forming cells in the adult mouse pancreas are expandable in Matrigel and form endocrine/acinar colonies in laminin hydrogel. *Proc Natl Acad Sci U S A* **110**, 3907-3912, doi:10.1073/pnas.1301889110 (2013).
- 17 Sugiyama, T. *et al.* Reconstituting pancreas development from purified progenitor cells reveals genes essential for islet differentiation. *Proc Natl Acad Sci U S A* **110**, 12691-12696, doi:10.1073/pnas.1304507110 (2013).
- 18 Huch, M. *et al.* Unlimited in vitro expansion of adult bi-potent pancreas progenitors through the Lgr5/R-spondin axis. *Embo J*, doi:10.1038/emboj.2013.204 (2013).
- 19 Sato, T. *et al.* Single Lgr5 stem cells build crypt-villus structures in vitro without a mesenchymal niche. *Nature* (2009).
- 20 Ootani, A. *et al.* Sustained in vitro intestinal epithelial culture within a Wnt-dependent stem cell niche. *Nat Med* **15**, 701-706 (2009).
- 21 Barker, N. *et al.* Lgr5(+ve) stem cells drive self-renewal in the stomach and build long-lived gastric units in vitro. *Cell Stem Cell* **6**, 25-36, doi:10.1016/j.stem.2009.11.013 (2010).
- 22 Huch, M. *et al.* In vitro expansion of single Lgr5+ liver stem cells induced by Wnt-driven regeneration. *Nature* **494**, 247-250, doi:10.1038/nature11826 (2013).
- 23 Lukacs, R. U., Goldstein, A. S., Lawson, D. A., Cheng, D. & Witte, O. N. Isolation, cultivation and characterization of adult murine prostate stem cells. *Nat Protoc* **5**, 702-713, doi:10.1038/nprot.2010.11 (2010).
- 24 Rock, J. R. *et al.* Basal cells as stem cells of the mouse trachea and human airway epithelium. *Proc Natl Acad Sci U S A* **106**, 12771-12775, doi:10.1073/pnas.0906850106 (2009).
- 25 Eiraku, M. *et al.* Self-organizing optic-cup morphogenesis in three-dimensional culture. *Nature* **472**, 51-56, doi:10.1038/nature09941 (2011).
- 26 Spence, J. R. *et al.* Directed differentiation of human pluripotent stem cells into intestinal tissue in vitro. *Nature* **470**, 105-109, doi:10.1038/nature09691 (2011).
- 27 Lancaster, M. A. *et al.* Cerebral organoids model human brain development and microcephaly. *Nature*, doi:10.1038/nature12517 (2013).
- 28 Greggio, C. *et al.* Artificial three-dimensional niches deconstruct pancreas development in vitro. *Development* **140**, 4452-4462, doi:10.1242/dev.096628 (2013).
- 29 Muzumdar, M. D., Tasic, B., Miyamichi, K., Li, L. & Luo, L. A global double-fluorescent Cre reporter mouse. *Genesis* **45**, 593-605, doi:10.1002/dvg.20335 (2007).

*Figure 1
[Click here to download Figure: Figure 1b.pdf](#)



*Figure 2
[Click here to download Figure: Figure 2b.pdf](#)





Organoid medium

Name of Material	Company	Catalog Number	Stock Concentration	Concentration in final medium	Volume of stock	Comments/Description
Penicillin-Streptomycin	Gibco	15070-063	100%	1%	50 µl	Stock kept at -20°C
KnockOut Serum replacement (supplement)	Gibco	10828-028	100%	10%	500 µl	Stock kept at -20°C
2-mercaptoethanol	Sigma Aldrich	3148-25ML	14.3 M	0.1 mM	1 µl	Stock kept at 4°C
Phorbol Myristate Acetate (PMA)	Calbiotech	524400-1MG	16 µM	16 nM	5 µl	Stock kept at -20°C
Y-27632 (ROCK inhibitor)	Sigma Aldrich	ab120129	50 mM	10 µM	1 µl	Stock kept at -20°C- Attention! Stability/source is a frequent source of problems
EGF	Sigma Aldrich	E9644-2MG	50 µg/ml	25 ng/ml	2.5 µl	Stock kept at -80°C
Recombinant Human R-spondin 1	R&D	4645-RS-025/CF	250 µg/ml	500 ng/ml	10 µl	Stock kept at -80°C
- or -						
Recombinant Mouse R-spondin 1	R&D	3474-RS-050	250 µg/ml	500 ng/ml	10 µl	Stock kept at -80°C
Recombinant Human FGF1 (aFGF)	R&D	232-FA-025	100 µg/ml	25 µg/ml	1.25 µl	Stock kept at -80°C- do not include to increase beta cell production
Heparin (Liquemin)	Drossapharm		2500 U/ml	2.5 U/ml	2 µl	Stock kept at 4°C
Recombinant Human FGF10	R&D	345-FG-025	100 µg/ml	100 ng/ml	5 µl	Stock kept at -80°C
DMEM/F-12	Gibco	21331-020			4412.25 µl	
Total					5000 µl	

Sphere medium

Name of Material	Company	Catalog Number	Stock Concentration	Concentration in final medium	Volume of stock	Comments/Description
Penicillin-Streptomycin	Gibco	15070-063	100%	1%	50 µl	Stock kept at -20°C
B27 x50 (supplement)	Gibco	17504-044	100%	10%	100 µl	Stock kept at -20°C
Recombinant Human FGF2 (bFGF)	R&D	233-FB-025	100 µg/ml	64 ng/ml	3.2 µl	Stock kept at -80°C
Y-27632 (ROCK inhibitor)	Sigma Aldrich	ab120129	50 mM	10 µM	1 µl	Stock kept at -20°C- Attention! Stability/source is a frequent source of problems
DMEM/F-12	Gibco	21331-020			4845.8 µl	
Total					5000 µl	

Other components

Name of Material	Company	Catalog Number	Working Concentration	Comments/Description
Matrigel	Corning	356231		Stock kept at -20°C
Trypsin 0.05%	Gibco	25300-054	0.05%	Stock kept at 4°C
RNAlater - RNA stabilizing reagent	Qiagen	76104		Store at room temperature
Dispase	Sigma Aldrich	D4818-2MG	1.25 mg/ml	Stock kept at -20°C
BSA for reconstitution	Milipore	81-068		For reconstitution of cytokines - Stock kept at -20°C
Fetal calf serum (FCS)	Gibco	16141079		Stock kept at -20°C

Equipment

Name of Material	Company	Catalog Number
60 well MicroWell trays	Sigma Aldrich	M0815-100EA
4-well plates	Thermo Scientific	176740
95-well plates F bottom	Greiner Bio	6555180
Glas bottom plates	Ibidi	81158
Disposal micropipettes	Blaubrand	708745

Microscopes used

Cell^R imaging station (motorized inverted Olympus IX81 stand) equipped with a Hamamatsu ORCA ER B7W camera and the Ludin Cube and Box.
Leica DMI6000 B stand surrounded with a Ludin Cube and Box, equipped with a Leica DFC365 FX camera and the AF6000 Expert/Matrix software command interface.

Objectives used

Olympus UPLAN FL NA 0.30 air 9.50 mm 10x long distance
Leica HC PL FLUOTAR NA 0.30 air 11.0 mm 10x long distance

Animated Figure (video and/or .ai figure files)

[Click here to download Animated Figure \(video and/or .ai figure files\): JOVE 1.mov](#)



17 Sellers Street
Cambridge, MA 02139
tel. +1.617.945.9051
www.JoVE.com

ARTICLE AND VIDEO LICENSE AGREEMENT

Title of Article:

In vitro pancreas organogenesis from dispersed mouse embryonic progenitors

Author(s):

Chiara Greggio, Filippo De Franceschi, Manuel Figueiredo_Larsen and Anne Grapin-Botton

Item 1 (check one box): The Author elects to have the Materials be made available (as described at <http://www.jove.com/publish>) via: ☒ Standard Access ☐ Open Access

Item 2 (check one box):

- ☒ The Author is NOT a United States government employee.
- ☐ The Author is a United States government employee and the Materials were prepared in the course of his or her duties as a United States government employee.
- ☐ The Author is a United States government employee but the Materials were NOT prepared in the course of his or her duties as a United States government employee.

ARTICLE AND VIDEO LICENSE AGREEMENT

1. **Defined Terms.** As used in this Article and Video License Agreement, the following terms shall have the following meanings: **"Agreement"** means this Article and Video License Agreement; **"Article"** means the article specified on the last page of this Agreement, including any associated materials such as texts, figures, tables, artwork, abstracts, or summaries contained therein; **"Author"** means the author who is a signatory to this Agreement; **"Collective Work"** means a work, such as a periodical issue, anthology or encyclopedia, in which the Materials in their entirety in unmodified form, along with a number of other contributions, constituting separate and independent works in themselves, are assembled into a collective whole; **"CRC License"** means the Creative Commons Attribution-Non Commercial-No Derivs 3.0 Unported Agreement, the terms and conditions of which can be found at: <http://creativecommons.org/licenses/by-nc-nd/3.0/legalcode>; **"Derivative Work"** means a work based upon the Materials or upon the Materials and other pre-existing works, such as a translation, musical arrangement, dramatization, fictionalization, motion picture version, sound recording, art reproduction, abridgment, condensation, or any other form in which the Materials may be recast, transformed, or adapted; **"Institution"** means the institution, listed on the last page of this Agreement, by which the Author was employed at the time of the creation of the Materials; **"JoVE"** means MyJoVE Corporation, a Massachusetts corporation and the publisher of *The Journal of Visualized Experiments*; **"Materials"** means the Article and / or the Video; **"Parties"** means the Author and JoVE; **"Video"** means any video(s) made by the Author, alone or in conjunction with any other parties, or by JoVE or its affiliates or agents, individually or in collaboration with the Author or any other parties, incorporating all or any portion of the Article, and in which the Author may or may not appear.

2. **Background.** The Author, who is the author of the Article, in order to ensure the dissemination and protection of the Article, desires to have the JoVE publish the Article and create and transmit videos based on the Article. In furtherance of such goals, the Parties desire to memorialize in this Agreement the respective rights of each Party in and to the Article and the Video.

3. **Grant of Rights in Article.** In consideration of JoVE agreeing to publish the Article, the Author hereby grants to JoVE, subject to **Sections 4** and **7** below, the exclusive, royalty-free, perpetual (for the full term of copyright in the Article, including any extensions thereto) license (a) to publish, reproduce, distribute, display and store the Article in all forms, formats and media whether now known or hereafter developed (including without limitation in print, digital and electronic form) throughout the world, (b) to translate the Article into other languages, create adaptations, summaries or extracts of the Article or other Derivative Works (including, without limitation, the Video) or Collective Works based on all or any portion of the Article and exercise all of the rights set forth in (a) above in such translations, adaptations, summaries, extracts, Derivative Works or Collective Works and (c) to license others to do any or all of the above. The foregoing rights may be exercised in all media and formats, whether now known or hereafter devised, and include the right to make such modifications as are technically necessary to exercise the rights in other media and formats. If the "Open Access" box has been checked in **Item 1** above, JoVE and the Author hereby grant to the public all such rights in the Article as provided in, but subject to all limitations and requirements set forth in, the CRC License.

4. **Retention of Rights in Article.** Notwithstanding the exclusive license granted to JoVE in **Section 3** above, the

ARTICLE AND VIDEO LICENSE AGREEMENT

Author shall, with respect to the Article, retain the non-exclusive right to use all or part of the Article for the non-commercial purpose of giving lectures, presentations or teaching classes, and to post a copy of the Article on the Institution's website or the Author's personal website, in each case provided that a link to the Article on the JoVE website is provided and notice of JoVE's copyright in the Article is included. All non-copyright intellectual property rights in and to the Article, such as patent rights, shall remain with the Author.

5. Grant of Rights in Video – Standard Access. This **Section 5** applies if the "Standard Access" box has been checked in **Item 1** above or if no box has been checked in **Item 1** above. In consideration of JoVE agreeing to produce, display or otherwise assist with the Video, the Author hereby acknowledges and agrees that, Subject to **Section 7** below, JoVE is and shall be the sole and exclusive owner of all rights of any nature, including, without limitation, all copyrights, in and to the Video. To the extent that, by law, the Author is deemed, now or at any time in the future, to have any rights of any nature in or to the Video, the Author hereby disclaims all such rights and transfers all such rights to JoVE.

6. Grant of Rights in Video – Open Access. This **Section 6** applies only if the "Open Access" box has been checked in **Item 1** above. In consideration of JoVE agreeing to produce, display or otherwise assist with the Video, the Author hereby grants to JoVE, subject to **Section 7** below, the exclusive, royalty-free, perpetual (for the full term of copyright in the Article, including any extensions thereto) license (a) to publish, reproduce, distribute, display and store the Video in all forms, formats and media whether now known or hereafter developed (including without limitation in print, digital and electronic form) throughout the world, (b) to translate the Video into other languages, create adaptations, summaries or extracts of the Video or other Derivative Works or Collective Works based on all or any portion of the Video and exercise all of the rights set forth in (a) above in such translations, adaptations, summaries, extracts, Derivative Works or Collective Works and (c) to license others to do any or all of the above. The foregoing rights may be exercised in all media and formats, whether now known or hereafter devised, and include the right to make such modifications as are technically necessary to exercise the rights in other media and formats. For any Video to which this Section 6 is applicable, JoVE and the Author hereby grant to the public all such rights in the Video as provided in, but subject to all limitations and requirements set forth in, the CRC License.

7. Government Employees. If the Author is a United States government employee and the Article was prepared in the course of his or her duties as a United States government employee, as indicated in **Item 2** above, and any of the licenses or grants granted by the Author hereunder exceed the scope of the 17 U.S.C. 403, then the rights granted hereunder shall be limited to the maximum rights permitted under such statute. In such case, all provisions contained herein that are not in conflict with such statute shall remain in full force and effect, and all provisions contained herein that do so conflict

shall be deemed to be amended so as to provide to JoVE the maximum rights permissible within such statute.

8. Likeness, Privacy, Personality. The Author hereby grants JoVE the right to use the Author's name, voice, likeness, picture, photograph, image, biography and performance in any way, commercial or otherwise, in connection with the Materials and the sale, promotion and distribution thereof. The Author hereby waives any and all rights he or she may have, relating to his or her appearance in the Video or otherwise relating to the Materials, under all applicable privacy, likeness, personality or similar laws.

9. Author Warranties. The Author represents and warrants that the Article is original, that it has not been published, that the copyright interest is owned by the Author (or, if more than one author is listed at the beginning of this Agreement, by such authors collectively) and has not been assigned, licensed, or otherwise transferred to any other party. The Author represents and warrants that the author(s) listed at the top of this Agreement are the only authors of the Materials. If more than one author is listed at the top of this Agreement and if any such author has not entered into a separate Article and Video License Agreement with JoVE relating to the Materials, the Author represents and warrants that the Author has been authorized by each of the other such authors to execute this Agreement on his or her behalf and to bind him or her with respect to the terms of this Agreement as if each of them had been a party hereto as an Author. The Author warrants that the use, reproduction, distribution, public or private performance or display, and/or modification of all or any portion of the Materials does not and will not violate, infringe and/or misappropriate the patent, trademark, intellectual property or other rights of any third party. The Author represents and warrants that it has and will continue to comply with all government, institutional and other regulations, including, without limitation all institutional, laboratory, hospital, ethical, human and animal treatment, privacy, and all other rules, regulations, laws, procedures or guidelines, applicable to the Materials, and that all research involving human and animal subjects has been approved by the Author's relevant institutional review board.

10. JoVE Discretion. If the Author requests the assistance of JoVE in producing the Video in the Author's facility, the Author shall ensure that the presence of JoVE employees, agents or independent contractors is in accordance with the relevant regulations of the Author's institution. If more than one author is listed at the beginning of this Agreement, JoVE may, in its sole discretion, elect not take any action with respect to the Article until such time as it has received complete, executed Article and Video License Agreements from each such author. JoVE reserves the right, in its absolute and sole discretion and without giving any reason therefore, to accept or decline any work submitted to JoVE. JoVE and its employees, agents and independent contractors shall have full, unfettered access to the facilities of the Author or of the Author's institution as necessary to make the Video, whether actually published or not. JoVE has sole discretion as to the method of making and publishing the Materials, including,

ARTICLE AND VIDEO LICENSE AGREEMENT

without limitation, to all decisions regarding editing, lighting, filming, timing of publication, if any, length, quality, content and the like.

11. **Indemnification.** The Author agrees to indemnify JoVE and/or its successors and assigns from and against any and all claims, costs, and expenses, including attorney's fees, arising out of any breach of any warranty or other representations contained herein. The Author further agrees to indemnify and hold harmless JoVE from and against any and all claims, costs, and expenses, including attorney's fees, resulting from the breach by the Author of any representation or warranty contained herein or from allegations or instances of violation of intellectual property rights, damage to the Author's or the Author's institution's facilities, fraud, libel, defamation, research, equipment, experiments, property damage, personal injury, violations of institutional, laboratory, hospital, ethical, human and animal treatment, privacy or other rules, regulations, laws, procedures or guidelines, liabilities and other losses or damages related in any way to the submission of work to JoVE, making of videos by JoVE, or publication in JoVE or elsewhere by JoVE. The Author shall be responsible for, and shall hold JoVE harmless from, damages caused by lack of sterilization, lack of cleanliness or by contamination due to the making of a video by JoVE its employees, agents or independent contractors. All sterilization, cleanliness or decontamination procedures shall be solely the responsibility of the Author and shall be undertaken at the Author's expense. All indemnifications provided herein shall include JoVE's attorney's fees and costs related to said losses or

damages. Such indemnification and holding harmless shall include such losses or damages incurred by, or in connection with, acts or omissions of JoVE, its employees, agents or independent contractors.

12. **Fees.** To cover the cost incurred for publication, JoVE must receive payment before production and publication the Materials. Payment is due in 21 days of invoice. Should the Materials not be published due to an editorial or production decision, these funds will be returned to the Author. Withdrawal by the Author of any submitted Materials after final peer review approval will result in a US\$1,200 fee to cover pre-production expenses incurred by JoVE. If payment is not received by the completion of filming, production and publication of the Materials will be suspended until payment is received.

13. **Transfer, Governing Law.** This Agreement may be assigned by JoVE and shall inure to the benefits of any of JoVE's successors and assignees. This Agreement shall be governed and construed by the internal laws of the Commonwealth of Massachusetts without giving effect to any conflict of law provision thereunder. This Agreement may be executed in counterparts, each of which shall be deemed an original, but all of which together shall be deemed to be one and the same agreement. A signed copy of this Agreement delivered by facsimile, e-mail or other means of electronic transmission shall be deemed to have the same legal effect as delivery of an original signed copy of this Agreement.

A signed copy of this document must be sent with all new submissions. Only one Agreement required per submission.

AUTHOR:

Name:
Department:
Institution:
Article Title:

Signature: Date:

Please submit a signed and dated copy of this license by one of the following three methods:

- 1) Upload a scanned copy as a PDF to the JoVE submission site upon manuscript submission (preferred);
- 2) Fax the document to +1.866.381.2236; or
- 3) Mail the document to JoVE / Attn: JoVE Editorial / 17 Sellers St / Cambridge, MA 02139

For questions, please email editorial@jove.com or call +1.617.945.9051.

MS # (internal use):

Response to reviewers' and editorial comments

Editorial comments:

* Some minor edits were made to your manuscript to comply with JoVE format. Specifically, many steps in the protocol were re-written in the imperative tense (do this, mix that, etc.) Please download the updated version of the manuscript from the "file inventory" and use this version for revisions. Please maintain these formatting and content changes throughout all subsequent manuscript revisions.

We have checked these editorial changes and we do approve them.

* Additionally your table of materials was edited to remove all copyright and trademark symbols, which cannot be published anywhere in a JoVE manuscript.

* Your video file could not be properly opened. Please check the file and upload the video in a JoVE supported format (see the instructions for authors).

From the instructions, we do not understand why the video was not functioning. We used what we thought was a supported format. We are providing 3 new formats and hope one of them will be suitable.

* Please take this opportunity to thoroughly proofread your manuscript to ensure that there are no spelling or grammar issues. Your JoVE editor will not copy-edit your manuscript and any errors in your submitted revision may be present in the published version.

We have carefully checked our manuscript again.

Reviewers' comments:

Reviewer #1:

This is a well described technical manuscript that follows a recent publication by the same group now in press in Development (Ref 28 of the present MS).

This new technical manuscript perfectly illustrates and complements the one just published and is important for the scientific community.

I do not have major concerns but only very minor ones:

-1- introduction, line 4: please replace acinar by exocrine as it is mainly duct-like cell lines that have been generated

We replaced acinar by exocrine.

-2- introduction, line 5: islets can in fact be maintained in some cases few weeks in culture without cell proliferation. The authors could change their sentence

We changed the sentence to indicate a culture of weeks instead of days.

-3- Table on organoid medium and other component: the table is a bit difficult to read as the lines are not perfectly aligned. Moreover, the term "EFG" should be replaced by "EGF"

We tried to realign the lines and changed the formatting.

Reviewer #2:

Manuscript Summary:

This is an interesting, accurate and important manuscript that describes for the first time a method to expand mouse embryonic pancreas early progenitors and follow organogenesis in vitro.

The methods are extremely well detailed and documented.

Major Concerns:

N/A

Minor Concerns:

N/A

Additional Comments to Authors:

N/A

Reviewer #3:

Manuscript Summary:

This is a clear and detailed description of 3D culture conditions to grow and manipulate embryonic pancreas in vitro. The study provides good evidence of the advantages and disadvantages of the described system and will be useful to those in the pancreas differentiation field as well as those with different areas of expertise.

Major Concerns:

None

Minor Concerns:

In 1.3.1 of the protocol, it would be useful to precisely indicate which inner organs.

We did indicate which inner organs.

Additional Comments to Authors:

N/A