

Journal of Visualized Experiments

Tissue engineering of tumor stromal microenvironment with application to cancer cell invasion --Manuscript Draft--

Manuscript Number:	JoVE51321R2
Full Title:	Tissue engineering of tumor stromal microenvironment with application to cancer cell invasion
Article Type:	Invited Methods Article - JoVE Produced Video
Keywords:	tumor microenvironment, stromal fibroblasts, extracellular matrix, tissue engineering, dermal equivalent, collagen, native matrix
Manuscript Classifications:	3.17.800.882: Skin Neoplasms; 3.4.697.645: Neoplasm Invasiveness; 95.51.8: bioengineering (general)
Corresponding Author:	Andrew South UNITED KINGDOM
Corresponding Author Secondary Information:	
Corresponding Author E-Mail:	A.P.South@dundee.ac.uk;y.z.ng@dundee.ac.uk
Corresponding Author's Institution:	
Corresponding Author's Secondary Institution:	
First Author:	Yi-Zhen Ng
First Author Secondary Information:	
Other Authors:	Yi-Zhen Ng
Order of Authors Secondary Information:	
Abstract:	<p>3D organotypic cultures of epithelial cells on a matrix embedded with mesenchymal cells are widely used to study epithelial cell differentiation and invasion. Rat tail type I collagen and/or matrix derived from Engelbreth-Holm-Swarm mouse sarcoma cells have been traditionally employed as the substrates to model the matrix or stromal microenvironment into which mesenchymal cells (usually fibroblasts) are populated. Although experiments using such matrices are very informative it can be argued that due to an overriding presence of a single protein (such as in type I Collagen) or a high content of basement membrane components and growth factors (such as in matrix derived from mouse sarcoma cells), these substrates do not best reflect the contribution to matrix composition made by the stromal cells themselves. To study native matrices produced by primary dermal fibroblasts isolated from patients with a tumor prone, genetic blistering disorder (recessive dystrophic epidermolysis bullosa), we have adapted an existing native matrix protocol to study tumor cell invasion. Fibroblasts are induced to produce their own matrix over a prolonged period in culture. This native matrix is then detached from the culture dish and epithelial cells are seeded onto it before the entire co-culture is raised to the air-liquid interface. Cellular differentiation and/or invasion can then be assessed over time. This technique provides the ability to assess epithelial-mesenchymal cell interactions in a 3D setting without the need for a synthetic or foreign matrix with the only disadvantage being the prolonged period of time required to produce the native matrix. Here we describe the application of this technique to assess the ability of a single molecule expressed by fibroblasts, type VII collagen, to inhibit tumor cell invasion.</p>
Author Comments:	Please note that corresponding author should be Yi Zhen Ng y.z.ng@dundee.ac.uk
Additional Information:	
Question	Response

TITLE: Tissue engineering of tumor stromal microenvironment with application to cancer cell invasion

AUTHORS: Yi-Zhen Ng^{1,2}, Andrew P South¹

¹Division of Cancer Research, Ninewells Hospital and Medical School, University of Dundee, Dundee, United Kingdom

²Institute of Medical Biology, A*Star, Singapore

y.z.ng@dundee.ac.uk

a.p.south@dundee.ac.uk

CORRESPONDING AUTHOR: Yi-Zhen Ng

KEYWORDS: tumor microenvironment, stromal fibroblasts, extracellular matrix, tissue engineering, dermal equivalent, collagen, native matrix

SHORT ABSTRACT: Tissue engineered fibroblast-derived native matrix is an emerging tool to generate a stromal substrate which supports epithelial cell proliferation and differentiation. Here a protocol applying this methodology to assess the impact of different stromal cell types on tumor cell biology is presented.

LONG ABSTRACT: 3D organotypic cultures of epithelial cells on a matrix embedded with mesenchymal cells are widely used to study epithelial cell differentiation and invasion. Rat tail type I collagen and/or matrix derived from Engelbreth-Holm-Swarm mouse sarcoma cells have been traditionally employed as the substrates to model the matrix or stromal microenvironment into which mesenchymal cells (usually fibroblasts) are populated. Although experiments using such matrices are very informative, it can be argued that due to an overriding presence of a single protein (such as in type I Collagen) or a high content of basement membrane components and growth factors (such as in matrix derived from mouse sarcoma cells), these substrates do not best reflect the contribution to matrix composition made by the stromal cells themselves. To study native matrices produced by primary dermal fibroblasts isolated from patients with a tumor prone, genetic blistering disorder (recessive dystrophic epidermolysis bullosa), we have adapted an existing native matrix protocol to study tumor cell invasion. Fibroblasts are induced to produce their own matrix over a prolonged period in culture. This native matrix is then detached from the culture dish and epithelial cells are seeded onto it before the entire co-culture is raised to the air-liquid interface. Cellular differentiation and/or invasion can then be assessed over time. This technique provides the ability to assess epithelial-mesenchymal cell interactions in a 3D setting without the need for a synthetic or foreign matrix with the only disadvantage being the prolonged period of time required to produce the native matrix. Here we describe the application of this technique to assess the ability of a single molecule expressed by fibroblasts, type VII collagen, to inhibit tumor cell invasion.

INTRODUCTION:

The use of biomaterial in 3D tissue culture has enabled researchers to study cell behavior in the laboratory under physiological conditions more akin to an *in vivo* environment than that of one recapitulated with 2D adhesion and a plastic substrate. In particular, great strides forward have been made in modeling stratified epithelia with the adoption of 3D culture methods at the air-liquid interface¹⁻⁴. Such techniques faithfully mimic keratinocyte differentiation and tumor cell invasion enabling greater flexibility and fidelity for researchers studying these processes. The choice of biomaterial substrate to mimic the stromal environment has primarily involved the use of type I collagen, Engelbreth-Holm-Swarm mouse sarcoma matrix and de-epidermised dermis. For example, cancer-associated fibroblasts have been shown to contribute toward cancer invasion⁵, initiation, and progression via stromal-epithelial interactions^{6,7} when grown in such substrates.

The gold standard for mimicking the stromal environment in skin, the largest and most widely studied stratified epithelia using such techniques, is regarded to be de-epidermised human dermis (DED). Preparation of DED involves the removal of the epidermis via trypsinization or physical disassociation from human cadaver skin^{3,4}. However, access to such skin can be very difficult for laboratories not associated with clinical institutions, and diseased dermis is near impossible to obtain. As an alternative, laboratories frequently use a combination of type I collagen (isolated from rat tails) and/or Engelbreth-Holm-Swarm mouse sarcoma matrix.

After the discovery in 1927 by Nageotte⁸ that collagen can easily be isolated using acetic acid and salt precipitation, its application to tissue culture was subsequently pioneered by Huzella and colleagues⁹. Collagen coating proved to be superior to glass for cell culture of 29 strains and tissue explants as interrogated by Ehrmann and Gey⁹. Currently, the major type of collagen used in tissue culture is isolated from rat-tail tendons, and is usually bought from commercial sources. However, the drawback for faithful substrate recapitulation is that the rat tail collagen is not identical to human collagen, or the human dermis, where type I and III collagens are present as major constituents, and isolated rat tail collagen is invariably fragmented.

Engelbreth-Holm-Swarm mouse sarcoma matrix is a gelatinous protein mixture secreted by cultured Engelbreth-Holm-Swarm mouse sarcoma cells¹⁰. The major constituents are laminin, type IV collagen, heparin sulphate proteoglycan, entactin and nidogen and the exact ratios of these proteins will vary from batch to batch. Aside from structural proteins, this matrix also contains significant levels of growth factors such as transforming growth factor β , epidermal growth factor, insulin-like growth factor 1, bovine fibroblast growth factor, and platelet-derived growth factor which would alter cellular behaviour^{11,12}. Pointing towards the sheer complexity of Engelbreth-Holm-Swarm mouse sarcoma matrix, a total of 1,851 proteins were identified in a recent proteomic study¹³. In light of the rich and complex nature of this matrix, caution has been advised when interpreting and comparing different experiments with the use of it¹¹.

Our laboratories have a keen interest in genetic skin diseases, particularly those with a predisposition to developing cutaneous squamous cell carcinoma (cSCC)¹⁴. In the case of recessive dystrophic epidermolysis bullosa (RDEB), a severe blistering disease with germline mutations in *COL7A1* gene¹⁵⁻¹⁷, we have determined that the dermal microenvironment in these patients is tumor promoting¹⁸. During the course of this study we were unable to assess the tumor promoting properties of dermal fibroblasts embedded within collagen I/ Engelbreth-Holm-Swarm mouse sarcoma matrix and investigated ways of assessing cells' own, native matrix. To achieve this, we modified a previous technique from the laboratory of Lucie Germain working on human skin equivalents^{19,20}. Germain's technique was able to reconstruct human skin with well-organized basement membrane using primary human keratinocyte and fibroblast cultures in the absence of a synthetic or cadaveric scaffold.

In this paper the steps used to recapitulate the cutaneous tumor stromal microenvironment (native matrix) derived directly from primary stromal fibroblasts *in vitro* are described¹⁸. Native matrices produced by long-term culture of fibroblasts were used as a dermal equivalent to assay for cSCC cell invasion. We present data using native matrix derived from either the extracellular matrix secreted by RDEB fibroblasts (deficient in type VII collagen (C7)) or from RDEB fibroblasts retrovirally transduced with a type VII collagen expressing construct and demonstrate the profound effect of a single collagen on tumor cell invasion.

PROTOCOL:

This study was conducted according to the Declaration of Helsinki Principles and was approved by the appropriate Ethics Committees.

1. Preparation of media and reagents

1.1. Preparation of 200x of L-ascorbic acid 2-phosphate stock

1.1.1. Dissolve 29 mg of L-ascorbic acid 2-phosphate per 5 ml of Dulbecco's Modified Eagle's Medium (DMEM) solution and filter through 0.22 μ m membrane filter. Store as 0.25 ml sterile aliquots in -20 °C.

1.1.2. Add 0.25 ml aliquot of 200x L-ascorbic acid 2-phosphate stock to every 50 ml of fibroblast media (DMEM with 1% L-Glutamine and 10% fetal bovine serum) on the day required, for a final concentration of 0.1 mM of L-ascorbic acid 2-phosphate.

1.2. Preparation of keratinocyte growth media

1.2.1. Isolation and culture of primary SCC keratinocytes have been described previously²¹. Preparation of keratinocyte growth media is described therein as well.

1.2.2. Briefly, prepare the media as follows:

- 300 ml of DMEM and 100 ml of Ham's F-12 supplemented with 10% FBS
- 0.4 mg/ml hydrocortisone
- 5 mg/ml insulin
- 10 ng/ml EGF
- 5 mg/ml transferrin
- 8.4 ng/ml cholera toxin
- 13 ng/ml liothyronine
- 1x penicillin-streptomycin solution

2. *In vitro* construction of fibroblast-derived native matrix in L-ascorbic acid 2-phosphate supplemented media

2.1. Seed 200,000 fibroblasts per well in 6-well plates (20,000 cells/cm²) in fibroblast media supplemented with of L-ascorbic acid 2-phosphate. Re-feed every 2-3 days with 2-5 ml of media. (Note: Refeeding frequency and volume may be adjusted to suit the individual needs of different cells. See "Discussions").

2.2. A thick layer of cells embedded in extracellular matrix will form at the end of 6 weeks, visible to the naked eye (Figure 1). To release this layer from the tissue culture plate, gently scrape the circumference of matrix with a 1 ml micro-pipette tip and then push the edges of the matrix towards center of the well. This layer of cells and matrix (native matrix) should be easily detachable from the plate surface, and now be floating in the media. Spread the native matrix out in the media to avoid it

folding up onto itself.

2.3. Let the native matrix float and remodel for 5 days, changing media every 2-3 days. Due to tensile strength and intrinsic remodeling within matrix, the matrix will contract drastically and become reduced to a smaller, but thicker native matrix, and is ready to be utilized for invasion assay.

3. Invasion assay with tumor SCC keratinocytes

3.1. Pick up the native matrix gently with blunt forceps and transfer to nylon net. Once on the nylon net, spread the matrix gently to lie as flat as possible using a 1 ml micro-pipette tip and blunt forceps.

3.2. Prepare the sterile clonal cylinders by smearing a small amount of sterile Vaseline on one end.

3.3. Place the clonal cylinders on the native matrix, with the Vaseline side down. This is to ensure a tight seal between the native matrix and the clonal rings.

3.4. Add cSCC cells to the clonal cylinders (250,000 cells in 100 μ l of keratinocyte growth media).

3.5. Remove the clonal cylinders after 6 hours when the cSCC cells have settled down on the native matrix.

3.6. Lift the nylon net with the native matrix and cSCC cells to air-liquid interface onto bent stainless steel wire mesh support.

3.7. Add keratinocyte growth media supplemented with ascorbic acid until the media level touches the bottom of the native matrix.

3.8. Change media every 2-3 days and harvest at 7 and 14 days post-seeding of cSCC cells.

4. Harvesting of 3D cultures and preparation for histology

4.1. Fix in 4% paraformaldehyde overnight at room temperature.

4.2. Bisect the samples and embed in wax for formalin-fixed paraffin embedded blocks, with the cut surface facing outwards.

4.3. Alternatively, embed the bisected samples in OCT and snap-freeze immediately in liquid nitrogen for fresh frozen tissue blocks.

4.4. Cut 4 μ m sections on microtome and dewax (if necessary). Stain using standard haematoxylin and eosin. To visualize the cSCC cells, mouse monoclonal antibody against keratin 14 (LL001, in-house) can be used in immunohistology

staining.

REPRESENTATIVE RESULTS:

This technique opens up the possibility of examining and comparing the invasive behavior of tumor cells (in this case cSCC) under different 3D stromal environments. Using this technique, not only C7-deficient native matrices that recapitulated the RDEB dermal environment can be generated, but also additional matrices that have been genetically engineered to over-express C7¹⁸. As seen in Figure 2, invasion of RDEB cSCC keratinocytes was significantly retarded in C7-overexpressing native matrices compared to C7-deficient RDEB control. This invasion is visualized via standard histological methods, where the gels were fixed, embedded in paraffin blocks and then sectioned and immunostained. Suggested antibodies to use for staining are anti-keratin 14 (LL001) for cSCC cells and anti-vimentin (V9) for fibroblasts.

Figure 1: Workflow of generation of fibroblast-derived native matrix and the tumor invasion assay

Figure 2: Keratin 14 (LL001) staining of the cSCC invasion into the native matrix derived from control RDEB fibroblast deficient in C7 (ai & bi), or in RDEB fibroblasts over-expressing full-length C7 expression (aii and bii), clearly demonstrates that the re-expression of C7 in extracellular matrix can retard cSCC keratinocyte invasion. Nuclei were stained with DAPI (in blue) and fibroblasts with vimentin (in green) in Figures 2bi) and 2bii).

DISCUSSION:

Due to the nature of this experiment, the total time required for completion can be up to two months. Throughout this time, utmost care and sterile tissue culture practices must be employed to prevent microbial contamination.

Aside from its role as a co-factor in the synthesis of hydroxyproline and hydroxylysine of collagens, ascorbic acid stimulates collagen specific mRNA expression in fibroblasts²². The ascorbic acid of choice here is the more stable L-ascorbic acid 2-phosphate²³. Re-feeding is advised three times a week but this will invariably be dependent on the cells being studied. The initial fibroblast cultures will consume more nutrients as the weeks pass, and more frequent re-feeding with larger media volumes may be advisable. It is important to be gentle when changing media and care should be taken to minimize disturbances to the cell layer during native matrix production.

The matrix should become visible usually after 2 weeks, especially around the circumference of the well. Infrequently, the matrix will free itself without any mechanical disruption. This is a reflection of the intrinsic remodeling of the matrix and tensile strength, which pulls the matrix inwards, but may also be a sign that the circumference of the native matrix was disturbed during media changes.

When releasing and freeing the matrix cell layer from the plate, one must be careful not to poke holes through the matrix. Small blunt cell scrapers may also be used in lieu of 1 ml micro-pipette tips. Placement of the released native matrix onto a nylon mesh first (being sure to lay the native matrix flat) makes for much easier handling and subsequent lifting to the air-liquid interface.

This protocol is the first to describe the use of native fibroblast matrix as a dermal substrate to model the microenvironment in tumor cell assays in order to obtain more accurate and physiologically relevant data.

ACKNOWLEDGMENTS:

A.P.S is supported by DebRA International and the British Skin Foundation. Y.Z.N is supported by A*STAR - University of Dundee Partnership PhD Programme.

DISCLOSURES:

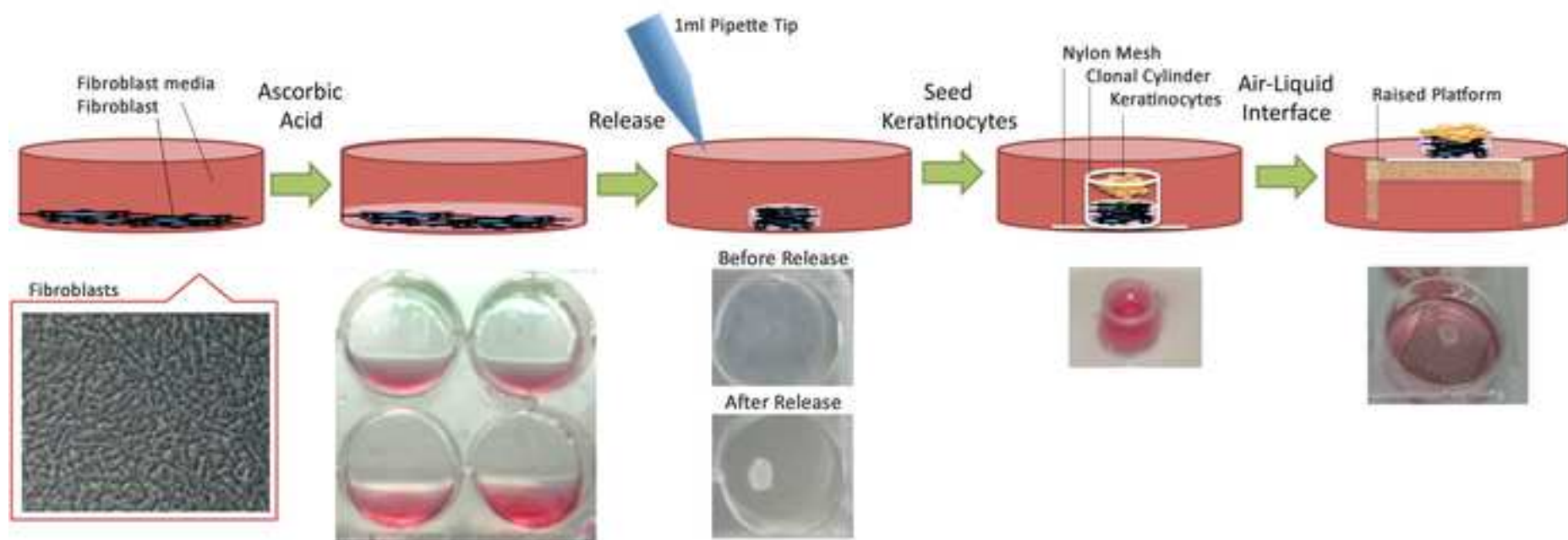
The authors have nothing to disclose.

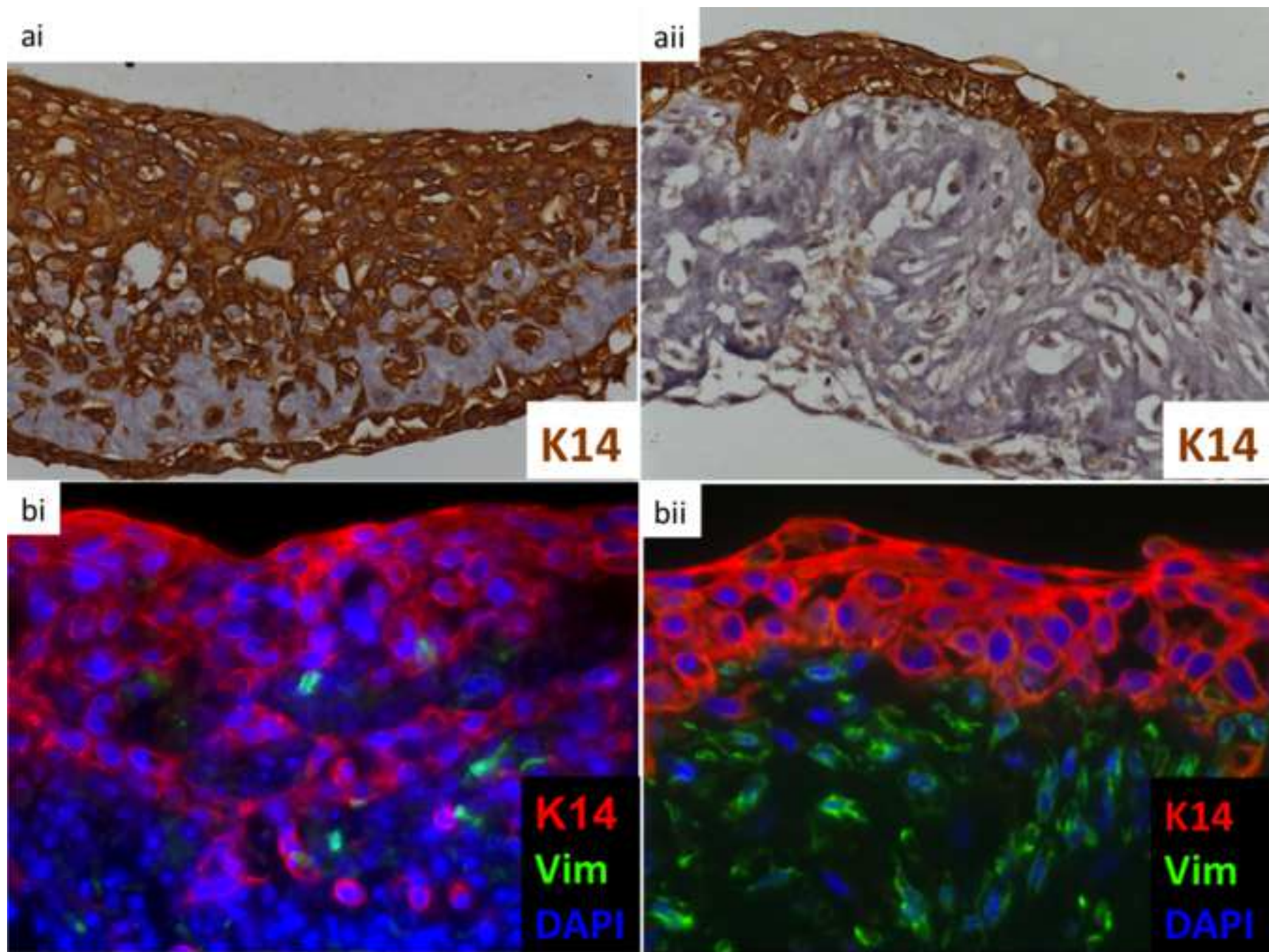
REFERENCES

1. Bell, E., Ehrlich, H. P., Buttle, D. J. & Nakatsuji, T. Living tissue formed in vitro and accepted as skin-equivalent tissue of full thickness. *Science* **211** (4486), 1052–1054 (1981).
2. Asselineau, D., Bernhard, B., Bailly, C. & Darmon, M. Epidermal morphogenesis and induction of the 67 kD keratin polypeptide by culture of human keratinocytes at the liquid-air interface. *Experimental Cell Research* **159** (2), 536–539 (1985).
3. Pruniéras, M. M., Régnier, M. M. & Woodley, D. D. Journal of Investigative Dermatology - Methods for Cultivation of Keratinocytes with an Air-Liquid Interface. *Journal of Investigative Dermatology* **81** (1 Suppl), 28s–33s, doi:10.1111/1523-1747.ep12540324 (1983).
4. Prunieras, M. & Régnier, M. [New procedure for culturing human epidermal cells on allogenic or xenogenic skin: preparation of recombined grafts]. *Ann Chir Plast.* (1979).
5. Gaggioli, C., *et al.* Fibroblast-led collective invasion of carcinoma cells with differing roles for RhoGTPases in leading and following cells. *Nature* **9** (12), 1392–1400, doi:10.1038/ncb1658 (2007).
6. Bhowmick, N. A., Neilson, E. G. & Moses, H. L. Stromal fibroblasts in cancer initiation and progression. *Nature* **432** (7015), 332–337, doi:10.1038/nature03096 (2004).
7. Erez, N., Truitt, M., Olson, P. & Hanahan, D. Cancer-Associated Fibroblasts Are Activated in Incipient Neoplasia to Orchestrate Tumor-Promoting Inflammation in an NF- κ B-Dependent Manner. *Cancer Cell* **17** (2), 135–147, doi:10.1016/j.ccr.2009.12.041 (2010).
8. Harkness, R. D., Marko, A. M., Muir, H. M. & Neuberger, A. The metabolism of collagen and other proteins of the skin of rabbits. *The Biochemical journal* **56** (4), 558–569 (1954).
9. Ehrmann, R. L. & Gey, G. O. The growth of cells on a transparent gel of

- reconstituted rat-tail collagen. *Journal of the National Cancer Institute* **16** (6), 1375–1403 (1956).
10. Kleinman, H. K., *et al.* Basement membrane complexes with biological activity. *Biochemistry* **25** (2), 312–318 (1986).
 11. Vukicevic, S., Kleinman, H. K., Luyten, F. P., Roberts, A. B., Roche, N. S. & Reddi, A. H. Identification of multiple active growth factors in basement membrane Matrigel suggests caution in interpretation of cellular activity related to extracellular matrix components. *Experimental Cell Research* **202** (1), 1–8 (1992).
 12. BD Biosciences - Discovery Labware. *SPC-356230 Rev 5.0* at <<http://SPC-356230 Rev 5.0>>
 13. Hughes, C. S., Postovit, L. M. & Lajoie, G. A. Matrigel: a complex protein mixture required for optimal growth of cell culture. *Proteomics* **10** (9), 1886–1890, doi:10.1002/pmic.200900758 (2010).
 14. Ng, Y. Z., Dayal, J. H. & South, A. P. Genetic Predisposition to Cutaneous Squamous Cell Carcinoma.
 15. Christiano, A. M. A., Greenspan, D. S. D., Lee, S. S. & Uitto, J. J. Cloning of human type VII collagen. Complete primary sequence of the alpha 1(VII) chain and identification of intragenic polymorphisms. *Journal of Biological Chemistry* **269** (32), 20256–20262 (1994).
 16. Hovnanian, A. A., *et al.* Genetic linkage of recessive dystrophic epidermolysis bullosa to the type VII collagen gene. *Journal of Clinical Investigation* **90** (3), 1032–1036 (1992).
 17. Ryyänen, M. M., Ryyänen, J. J., Sollberg, S. S., Iozzo, R. V. R., Knowlton, R. G. R. & Uitto, J. J. Genetic linkage of type VII collagen (COL7A1) to dominant dystrophic epidermolysis bullosa in families with abnormal anchoring fibrils. *Journal of Clinical Investigation* **89** (3), 974–980, doi:10.1172/JCI115680 (1992).
 18. Ng, Y. Z., *et al.* Fibroblast-derived dermal matrix drives development of aggressive cutaneous squamous cell carcinoma in patients with recessive dystrophic epidermolysis bullosa. *Cancer research*, doi:10.1158/0008-5472.CAN-11-2996 (2012).
 19. Larouche, D., Paquet, C., Fradette, J., Carrier, P., Auger, F. A. & Germain, L. *Methods in Molecular Biology*. **482** (Chapter 15), 233–256, doi:10.1007/978-1-59745-060-7_15 (Humana Press: Totowa, NJ, 2009).
 20. Pouliot, R. R., *et al.* Reconstructed human skin produced in vitro and grafted on athymic mice. *Transplantation* **73** (11), 1751–1757 (2002).
 21. Purdie, K. J., Pourreyn, C. & South, A. P. Isolation and culture of squamous cell carcinoma lines. *Methods in Molecular Biology* **731**, 151–159, doi:10.1007/978-1-61779-080-5_14 (2011).
 22. Pinnell, S. R. Regulation of collagen biosynthesis by ascorbic acid: a review. *The Yale journal of biology and medicine* **58** (6), 553–559 (1985).
 23. Hata, R. & Senoo, H. L-ascorbic acid 2-phosphate stimulates collagen accumulation, cell proliferation, and formation of a three-dimensional tissuelike substance by skin fibroblasts. *Journal of Cellular Physiology* **138** (1), 8–16, doi:10.1002/jcp.1041380103 (1988).

*Figure
[Click here to download high resolution image](#)





Name of the reagent	Company	Catalogue number	Comments (optional)
L-Ascorbic acid 2-phosphate	Sigma	A8960	
DMEM with L-glutamine, 4,500 mg/L d-glucose, 110 mg/L sodium pyruvate	Life Technologies	11995-073	
100x Penicillin-Streptomycin	Life Technologies	15070	
Vaseline	VWR	PROL28908.290	
Clonal cylinders	Sigma	Z370789	
Nylon Net Filter Disc Hydrophilic 100um 25um diameter 100/pk	Millipore	NY1H02500	
Bent stainless steel wire mesh support	Made in house		Dimensions were made so that the mesh would fit into 6-well plates



17 Sellers Street
Cambridge, MA 02139
tel. +1.617.945.9051
www.JoVE.com

ARTICLE AND VIDEO LICENSE AGREEMENT - UK

Title of Article:

Tissue engineering of tumor stromal microenvironment with application to cancer cell invasion

Author(s):

Yi-Zhen Ng, Andrew P. South

Item 1 (check one box): The Author elects to have the Materials be made available (as described at

<http://www.jove.com/publish>) via: ☒ Standard Access ☐ Open Access

Item 2 (check one box):

- ☒ The Author is NOT a United States government employee.
- ☐ The Author is a United States government employee and the Materials were prepared in the course of his or her duties as a United States government employee.
- ☐ The Author is a United States government employee but the Materials were NOT prepared in the course of his or her duties as a United States government employee.

ARTICLE AND VIDEO LICENSE AGREEMENT

1. **Defined Terms.** As used in this Article and Video License Agreement, the following terms shall have the following meanings: **"Agreement"** means this Article and Video License Agreement; **"Article"** means the article specified on the last page of this Agreement, including any associated materials such as texts, figures, tables, artwork, abstracts, or summaries contained therein; **"Author"** means the author who is a signatory to this Agreement; **"Collective Work"** means a work, such as a periodical issue, anthology or encyclopedia, in which the Materials in their entirety in unmodified form, along with a number of other contributions, constituting separate and independent works in themselves, are assembled into a collective whole; **"CRC License"** means the Creative Commons Attribution 3.0 Agreement, the terms and conditions of which can be found at: <http://creativecommons.org/licenses/by/3.0/us/legalcode>; **"Derivative Work"** means a work based upon the Materials or upon the Materials and other pre-existing works, such as a translation, musical arrangement, dramatization, fictionalization, motion picture version, sound recording, art reproduction, abridgment, condensation, or any other form in which the Materials may be recast, transformed, or adapted; **"Institution"** means the institution, listed on the last page of this Agreement, by which the Author was employed at the time of the creation of the Materials; **"JoVE"** means MyJoVE Corporation, a Massachusetts corporation and the publisher of *The Journal of Visualized Experiments*; **"Materials"** means the Article and / or the Video; **"Parties"** means the Author and JoVE; **"Video"** means any video(s) made by the Author, alone or in conjunction with any other parties, or by JoVE or its affiliates or agents, individually or in collaboration with the Author or any other parties, incorporating all or any portion of the Article, and in which the Author may or may not appear.

2. **Background.** The Author, who is the author of the Article, in order to ensure the dissemination and protection of the Article, desires to have the JoVE publish the Article and create and transmit videos based on the Article. In furtherance of such goals, the Parties desire to memorialize in this Agreement the respective rights of each Party in and to the Article and the Video.

3. **Grant of Rights in Article.** In consideration of JoVE agreeing to publish the Article, the Author hereby grants to JoVE, subject to **Sections 4 and 7** below, the exclusive, royalty-free, perpetual (for the full term of copyright in the Article, including any extensions thereto) license (a) to publish, reproduce, distribute, display and store the Article in all forms, formats and media whether now known or hereafter developed (including without limitation in print, digital and electronic form) throughout the world, (b) to translate the Article into other languages, create adaptations, summaries or extracts of the Article or other Derivative Works (including, without limitation, the Video) or Collective Works based on all or any portion of the Article and exercise all of the rights set forth in (a) above in such translations, adaptations, summaries, extracts, Derivative Works or Collective Works and (c) to license others to do any or all of the above. The foregoing rights may be exercised in all media and formats, whether now known or hereafter devised, and include the right to make such modifications as are technically necessary to exercise the rights in other media and formats. If the "Open Access" box has been checked in **Item 1** above, JoVE and the Author hereby grant to the public all such rights in the Article as provided in, but subject to all limitations and requirements set forth in, the CRC License.

4. **Retention of Rights in Article.** Notwithstanding the exclusive license granted to JoVE in **Section 3** above, the

ARTICLE AND VIDEO LICENSE AGREEMENT

Author shall, with respect to the Article, retain the non-exclusive right to use all or part of the Article for the non-commercial purpose of giving lectures, presentations or teaching classes, and to post a copy of the Article on the Institution's website or the Author's personal website, in each case provided that a link to the Article on the JoVE website is provided and notice of JoVE's copyright in the Article is included. All non-copyright intellectual property rights in and to the Article, such as patent rights, shall remain with the Author.

5. Grant of Rights in Video – Standard Access. This **Section 5** applies if the "Standard Access" box has been checked in **Item 1** above or if no box has been checked in **Item 1** above. In consideration of JoVE agreeing to produce, display or otherwise assist with the Video, the Author hereby acknowledges and agrees that, Subject to **Section 7** below, JoVE is and shall be the sole and exclusive owner of all rights of any nature, including, without limitation, all copyrights, in and to the Video. To the extent that, by law, the Author is deemed, now or at any time in the future, to have any rights of any nature in or to the Video, the Author hereby disclaims all such rights and transfers all such rights to JoVE.

6. Grant of Rights in Video – Open Access. This **Section 6** applies only if the "Open Access" box has been checked in **Item 1** above. In consideration of JoVE agreeing to produce, display or otherwise assist with the Video, the Author hereby grants to JoVE, subject to **Section 7** below, the exclusive, royalty-free, perpetual (for the full term of copyright in the Article, including any extensions thereto) license (a) to publish, reproduce, distribute, display and store the Video in all forms, formats and media whether now known or hereafter developed (including without limitation in print, digital and electronic form) throughout the world, (b) to translate the Video into other languages, create adaptations, summaries or extracts of the Video or other Derivative Works or Collective Works based on all or any portion of the Video and exercise all of the rights set forth in (a) above in such translations, adaptations, summaries, extracts, Derivative Works or Collective Works and (c) to license others to do any or all of the above. The foregoing rights may be exercised in all media and formats, whether now known or hereafter devised, and include the right to make such modifications as are technically necessary to exercise the rights in other media and formats.

7. Government Employees. If the Author is a United States government employee and the Article was prepared in the course of his or her duties as a United States government employee, as indicated in **Item 2** above, and any of the licenses or grants granted by the Author hereunder exceed the scope of the 17 U.S.C. 403, then the rights granted hereunder shall be limited to the maximum rights permitted under such statute. In such case, all provisions contained herein that are not in conflict with such statute shall remain in full force and effect, and all provisions contained herein that do so conflict

shall be deemed to be amended so as to provide to JoVE the maximum rights permissible within such statute.

8. Likeness, Privacy, Personality. The Author hereby grants JoVE the right to use the Author's name, voice, likeness, picture, photograph, image, biography and performance in any way, commercial or otherwise, in connection with the Materials and the sale, promotion and distribution thereof. The Author hereby waives any and all rights he or she may have, relating to his or her appearance in the Video or otherwise relating to the Materials, under all applicable privacy, likeness, personality or similar laws.

9. Author Warranties. The Author represents and warrants that the Article is original, that it has not been published, that the copyright interest is owned by the Author (or, if more than one author is listed at the beginning of this Agreement, by such authors collectively) and has not been assigned, licensed, or otherwise transferred to any other party. The Author represents and warrants that the author(s) listed at the top of this Agreement are the only authors of the Materials. If more than one author is listed at the top of this Agreement and if any such author has not entered into a separate Article and Video License Agreement with JoVE relating to the Materials, the Author represents and warrants that the Author has been authorized by each of the other such authors to execute this Agreement on his or her behalf and to bind him or her with respect to the terms of this Agreement as if each of them had been a party hereto as an Author. The Author warrants that the use, reproduction, distribution, public or private performance or display, and/or modification of all or any portion of the Materials does not and will not violate, infringe and/or misappropriate the patent, trademark, intellectual property or other rights of any third party. The Author represents and warrants that it has and will continue to comply with all government, institutional and other regulations, including, without limitation all institutional, laboratory, hospital, ethical, human and animal treatment, privacy, and all other rules, regulations, laws, procedures or guidelines, applicable to the Materials, and that all research involving human and animal subjects has been approved by the Author's relevant institutional review board.

10. JoVE Discretion. If the Author requests the assistance of JoVE in producing the Video in the Author's facility, the Author shall ensure that the presence of JoVE employees, agents or independent contractors is in accordance with the relevant regulations of the Author's institution. If more than one author is listed at the beginning of this Agreement, JoVE may, in its sole discretion, elect not take any action with respect to the Article until such time as it has received complete, executed Article and Video License Agreements from each such author. JoVE reserves the right, in its absolute and sole discretion and without giving any reason therefore, to accept or decline any work submitted to JoVE. JoVE and its employees, agents and independent contractors shall have full, unfettered access to the facilities of the Author or of the Author's institution as necessary to make the Video, whether actually published or not. JoVE has sole discretion as to the method of making and publishing the Materials, including,

ARTICLE AND VIDEO LICENSE AGREEMENT

without limitation, to all decisions regarding editing, lighting, filming, timing of publication, if any, length, quality, content and the like.

11. **Indemnification.** The Author agrees to indemnify JoVE and/or its successors and assigns from and against any and all claims, costs, and expenses, including attorney's fees, arising out of any breach of any warranty or other representations contained herein. The Author further agrees to indemnify and hold harmless JoVE from and against any and all claims, costs, and expenses, including attorney's fees, resulting from the breach by the Author of any representation or warranty contained herein or from allegations or instances of violation of intellectual property rights, damage to the Author's or the Author's institution's facilities, fraud, libel, defamation, research, equipment, experiments, property damage, personal injury, violations of institutional, laboratory, hospital, ethical, human and animal treatment, privacy or other rules, regulations, laws, procedures or guidelines, liabilities and other losses or damages related in any way to the submission of work to JoVE, making of videos by JoVE, or publication in JoVE or elsewhere by JoVE. The Author shall be responsible for, and shall hold JoVE harmless from, damages caused by lack of sterilization, lack of cleanliness or by contamination due to the making of a video by JoVE its employees, agents or independent contractors. All sterilization, cleanliness or decontamination procedures shall be solely the responsibility of the Author and shall be undertaken at the Author's expense. All indemnifications provided herein shall include JoVE's attorney's fees and costs related to said losses or

damages. Such indemnification and holding harmless shall include such losses or damages incurred by, or in connection with, acts or omissions of JoVE, its employees, agents or independent contractors.

12. **Fees.** To cover the cost incurred for publication, JoVE must receive payment before production and publication the Materials. Payment is due in 21 days of invoice. Should the Materials not be published due to an editorial or production decision, these funds will be returned to the Author. Withdrawal by the Author of any submitted Materials after final peer review approval will result in a US\$1,200 fee to cover pre-production expenses incurred by JoVE. If payment is not received by the completion of filming, production and publication of the Materials will be suspended until payment is received.

13. **Transfer, Governing Law.** This Agreement may be assigned by JoVE and shall inure to the benefits of any of JoVE's successors and assignees. This Agreement shall be governed and construed by the internal laws of the Commonwealth of Massachusetts without giving effect to any conflict of law provision thereunder. This Agreement may be executed in counterparts, each of which shall be deemed an original, but all of which together shall be deemed to be one and the same agreement. A signed copy of this Agreement delivered by facsimile, e-mail or other means of electronic transmission shall be deemed to have the same legal effect as delivery of an original signed copy of this Agreement.

A signed copy of this document must be sent with all new submissions. Only one Agreement required per submission.

AUTHOR:

Name:

Yi-Zhen Ng

Department:

Division of Cancer Research

Institution:

Medical Research Institute, Ninewells Hospital and Medical School

Article Title:

Tissue engineering of tumor stromal microenvironment with application to cancer cell invasion

Signature:

Yi-Zhen Ng

Date:

18.6.13

Please submit a signed and dated copy of this license by one of the following three methods:

- 1) Upload a scanned copy as a PDF to the JoVE submission site upon manuscript submission (preferred);
- 2) Fax the document to +1.866.381.2236; or
- 3) Mail the document to JoVE / Attn: JoVE Editorial / 17 Sellers St / Cambridge, MA 02139

For questions, please email editorial@jove.com or call +1.617.945.9051.

MS # (internal use):

Author reply to Editorial comments (reply indicated by underlined text):

Editorial comments:

* All of your previous revisions have been incorporated in to the most recent version of the manuscript. Please download this version of the Microsoft word document from the "file inventory" to use for any subsequent changes.

Yes. Downloaded from file inventory 51321_R1_mk

* Please keep the editorial comments from your previous revisions in mind as you revise your manuscript to address peer review comments. For instance, if formatting or other changes were made, commercial language was removed, etc., please maintain these overall manuscript changes.

* Please take this opportunity to thoroughly proofread your manuscript to ensure that there are no spelling or grammar issues. Your JoVE editor will not copy-edit your manuscript and any errors in your submitted revision may be present in the published version.

* Please be consistent with units throughout the protocol - for instances, min vs. minutes, mL vs. ml, and so on. Please use a micron symbol (μ) rather than a lower case "u".

We have altered the text accordingly

* I have added y.z.ng@dundee.ac.uk as the second email for Andrew South's profile - you should both receive any emails regarding the manuscript, which will be addressed to Dr. South.

Both of us now receive emails.

* I have updated your numbering so that section 2 is now part of section 1 and changed the rest of the numbering accordingly. Please check this numbering scheme and make any required changes. Please also ensure that if you refer to any steps by number throughout the text the proper numbers are used.

Reviewers' comments:

Reviewer #1:

Manuscript Summary:

The use of 3D synthetic matrices continues apace as scientists explore the mechanisms of invasion and differentiation. This paper identifies a technique that allows investigation of the role of specific genetic loss of individual ECM molecules. This was achieved by allowing fibroblasts isolated from patients with the genetic disorder RDEB who lack collagen VII to form a natural, thick matrix. This matrix was compared with a control matrix formed from fibroblasts expressing collagen VII. The data show that the collagen VII deficient matrix was invasion permissive. This reflects what happens in RDEB but this is not clearly pointed out in the results. Overall a valuable addition to the field.

Major Concerns:

There are none

Minor Concerns:

Some typos/suggested alternative words

1.1.2 Replace thaw with add

2.2 and elsewhere. As not all 1ml micro-pipette tips are blue just call them 1ml micro-pipette tips.

Discussion "...as the weeks pass..."

We have altered the text accordingly

In results- comment that the result reflects RDEB behaviour and reference.

We have altered the text accordingly

Additional Comments to Authors:

N/A

Reviewer #2:*Manuscript Summary:*

Ng and South describe a new approach to making organotypic culture models using the fibroblasts own extracellular matrix, produced over a prolonged culture period. The method has clear advantages over the current collagen I or Engelbreth-Holm-Swarm mouse models. The background and rationale are clear and well references, and except for slight disadvantage the long term initial culture it is a straightforward approach that should be attractive to epithelial biologists and cancer biologists. The protocol is clear, and I only suggest changes to further clarify the protocol for the reader.

Major Concerns:

- I'm not sure that the en-face and pseudo 3D aspect of figure 1 add anything to understanding, indeed, simpler figures combined with the excellent images below, would be easier for readers to understand and have greater visual impact.

We have altered the photo accordingly. En-face view has been removed and the figure has been simplified.

- I found the second paragraph of the discussion quite difficult to understand, and as it involves the critical long term fibroblast culture, it needs to be more clearly stated that feeding of the fibroblast cultures will have to be more frequent in the later weeks and with a larger volume of medium

We have made a note in the Protocol Step 2.1 to highlight this.

Minor Concerns:

- Does 1.1 need to be shown on video? it seems quite self explanatory based on the text alone.

As ascorbic acid addition is a crucial ingredient to the generation of native matrices, we would like to retain this step.

Editorial Comment: It is up to you what to include in the video. The only constraints are (1) maximum length of highlighted text of 2.75 pages, which you are far under, and (2) we ask that the steps chosen to highlight / film present a complete story and that critical stories are not skipped.

Reviewer #3:

Manuscript Summary:

This is a really well written and well developed technique paper which I recommend for immediate publication.

Major Concerns:

none

Minor Concerns:

Its a little hard to discern what is being shown in the multiwell plate in the second step (+ascorbic acid) of F1. Perhaps the authors could consider adding a label or adjusting contrast so that matrix is more visible?

We have altered the figure accordingly.

Additional Comments to Authors:

N/A

Reviewer #4:*Manuscript Summary:*

The authors describe a three-dimensional model to engineer tumour stromal microenvironment and cell invasion. Although there are a number of such models this is a well described protocol and would be of significant interest to other workers in the field

Major Concerns:

None

Minor Concerns:

None

Additional Comments to Authors:

N/A
