

# Journal of Visualized Experiments

## Cytological Analysis of Spermatogenesis: Live and Fixed Preparations of Drosophila Testes

--Manuscript Draft--

<b>Manuscript Number:</b>	JoVE51058R1
<b>Full Title:</b>	Cytological Analysis of Spermatogenesis: Live and Fixed Preparations of Drosophila Testes
<b>Article Type:</b>	Invited Methods Article - JoVE Produced Video
<b>Keywords:</b>	Drosophila melanogaster; dissection; testes; spermatogenesis; meiosis; germ cells; phase-contrast microscopy; Immunofluorescence
<b>Manuscript Classifications:</b>	1.5.360.576: Gonads; 2.1.50.500.131.617.289.310.250.500: Drosophila melanogaster
<b>Corresponding Author:</b>	Laura Anne Lee, M.D., Ph.D. Vanderbilt University Medical Center Nashville, TN UNITED STATES
<b>Corresponding Author Secondary Information:</b>	
<b>Corresponding Author E-Mail:</b>	laura.a.lee@vanderbilt.edu
<b>Corresponding Author's Institution:</b>	Vanderbilt University Medical Center
<b>Corresponding Author's Secondary Institution:</b>	
<b>First Author:</b>	Poojitha Sitaram
<b>First Author Secondary Information:</b>	
<b>Other Authors:</b>	Poojitha Sitaram
	Sarah Grace Hainline
<b>Order of Authors Secondary Information:</b>	
<b>Abstract:</b>	Drosophila melanogaster is a powerful model system that has been widely used to elucidate a variety of biological processes. For example, studies of both the female and male germ lines of Drosophila have contributed greatly to the current understanding of meiosis as well as stem cell biology. Excellent protocols are available in the literature for the isolation and imaging of Drosophila ovaries (1,2) and testes (3-12). Herein, methods for the dissection and preparation of Drosophila testes for microscopic analysis are described with an accompanying video demonstration. A protocol for isolating testes from the abdomen of adult males and preparing slides of live tissue for analysis by phase-contrast microscopy as well as a protocol for fixing and immunostaining testes for analysis by fluorescence microscopy are presented. These techniques can be applied in the characterization of Drosophila mutants that exhibit defects in spermatogenesis as well as in the visualization of subcellular localizations of proteins.
<b>Author Comments:</b>	
<b>Additional Information:</b>	
<b>Question</b>	<b>Response</b>

June 19, 2013

Dear Dr. Diamond,

Please consider for publication in the *Journal of Visualized Experiments* our revised manuscript entitled “Cytological Analysis of Spermatogenesis: Live and Fixed Preparations of *Drosophila* Testes” (JoVE51058). The authors are Poojitha Sitaram, Sarah G. Hainline, and myself (Laura A. Lee). We have attempted to address all of the editor’s concerns and the reviewers’ concerns in this revised version, and we think that we have significantly improved the quality of the manuscript and figures by doing so.

This manuscript complies with the guidelines set forth for submission of manuscripts to the *Journal of Visualized Experiments*. In addition to the revised manuscript, we are submitting four accompanying figures (revised versions for Figures 1-3; no changes made in Figure 4), a revised table of reagents and equipment, and the response to reviewers’ comments. Thank you for your consideration, and please feel free to contact me if you require additional information.

Sincerely, Laura A. Lee

A handwritten signature in cursive script that reads "Laura Lee".

Laura A. Lee, M.D., Ph.D.  
Associate Professor of Cell & Developmental Biology  
Vanderbilt University Medical Center  
465 21st Avenue South  
U-4225 Learned Lab/MRBIII  
Nashville, TN 37232-8240  
Office: (615) 322-1331  
Lab: (615) 322-1412  
Email: [laura.a.lee@vanderbilt.edu](mailto:laura.a.lee@vanderbilt.edu)

**Cytological Analysis of Spermatogenesis:**  
**Live and Fixed Preparations of *Drosophila* Testes**

Poojitha Sitaram, Sarah G. Hainline, and Laura A. Lee\*

Department of Cell and Developmental Biology  
Vanderbilt University Medical Center

Email Addresses: [poojitha.sitaram@vanderbilt.edu](mailto:poojitha.sitaram@vanderbilt.edu), [sarah.g.hainline@vanderbilt.edu](mailto:sarah.g.hainline@vanderbilt.edu)

\*Correspondence to: Laura A. Lee, [laura.a.lee@vanderbilt.edu](mailto:laura.a.lee@vanderbilt.edu).  
Tel no: 615-322-1331

**Keywords:**

*Drosophila melanogaster*, dissection, testes, spermatogenesis, meiosis, germ cells,  
phase-contrast microscopy, immunofluorescence

**Short Abstract:**

Methods for isolating and preparing *Drosophila* testes samples (live and fixed) for imaging by phase-contrast and fluorescence microscopy are described herein.

**Long Abstract:**

*Drosophila melanogaster* is a powerful model system that has been widely used to elucidate a variety of biological processes. For example, studies of both the female and male germ lines of *Drosophila* have contributed greatly to the current understanding of meiosis as well as stem cell biology. Excellent protocols are available in the literature for the isolation and imaging of *Drosophila* ovaries<sup>1,2</sup> and testes<sup>3-12</sup>. Herein, methods for the dissection and preparation of *Drosophila* testes for microscopic analysis are described with an accompanying video demonstration. A protocol for isolating testes from the abdomen of adult males and preparing slides of live tissue for analysis by phase-contrast microscopy as well as a protocol for fixing and immunostaining testes for analysis by fluorescence microscopy are presented. These techniques can be applied in the characterization of *Drosophila* mutants that exhibit defects in spermatogenesis as well as in the visualization of subcellular localizations of proteins.

## Introduction:

*Drosophila* testes are an ideal model system for the study of many biological processes including the regulation of stem cells, meiosis, and sperm development<sup>13-18</sup>. The spermatocytes and their meiotic spindles are large and hence convenient for cytological analysis, and relaxed cell cycle checkpoints during spermatogenesis facilitate the study of mutations in cell cycle genes<sup>19,20</sup>. Different cell types can be observed in ordered progression along the length of the testes, and any disruption in spermatogenesis can lead to changes in this overall arrangement. These features combined with *Drosophila* genetic tools have facilitated the mutational analysis of spermatogenesis<sup>21-23</sup>.

The stages of *Drosophila* spermatogenesis have been well defined<sup>19,24</sup>. Germline cells that develop synchronously within cysts progress sequentially through the stages of spermatogenesis along the length of the testis. During both the mitotic and meiotic divisions of the male germ cells, cytokinesis occurs incompletely such that the daughter cells remain connected by cytoplasmic bridges known as ring canals (Figure 1). The apical tip of the testis contains a population of germline stem cells that gives rise to spermatogonial cells, which undergo four mitotic divisions with incomplete cytokinesis to generate 16-cell cysts of primary spermatocytes. After premeiotic S phase, primary spermatocytes enter G2, a prolonged growth period of ~90 hours during which cellular volume increases ~25-fold. Progression through meiosis I and meiosis II results in the formation of 32-cell cysts of secondary spermatocytes and 64-cell cysts of haploid spermatids, respectively. The immature, round spermatids undergo extensive cellular remodeling to form mature sperm. Post-meiotic cells, in particular the bundles of elongating and mature spermatids, occupy much of the volume of the testis.

The successful transport of functional sperm to female flies requires coordination between the different parts of the male reproductive system, which is composed of several paired structures (the testes, seminal vesicles, and accessory glands) and a single ejaculatory duct (Figure 2). Sperm are produced within the testes and stored within the seminal vesicles until copulation<sup>24</sup>. The accessory glands contain secretory cells that produce seminal fluid. The sperm migrating from the seminal vesicles are mixed with seminal fluid within the ejaculatory duct, which is connected to both the seminal vesicles and the accessory glands. This mixture of sperm and seminal fluid is ultimately pumped out of the male into the vagina of the female fly through the ejaculatory bulb located at the posterior end of the male abdomen<sup>25</sup>. Proteins within the seminal fluid are essential for prolonged storage of sperm within specialized organs known as spermathecae in the reproductive tract of *Drosophila* females<sup>26</sup>.

Excellent methods for the isolation of *Drosophila* testes and visualization of cells at various stages of spermatogenesis are available in the scientific literature<sup>3-12</sup>. We herein add to this body of knowledge by presenting examples of these protocols with an accompanying video demonstration. The protocol for preparation of live testes samples for phase-contrast microscopy is based on a previously described method<sup>27</sup>. The protocol for formaldehyde fixation and immunostaining of testes is also based on a

previously described method <sup>28</sup>. The approaches described herein have been used in many studies of *Drosophila* spermatogenesis (for example, to assess the roles of dynein, a minus-end-directed microtubule motor, during *Drosophila* spermatogenesis) <sup>29,30</sup>.

In addition to the basic protocols, suggestions are provided for varying the dissection so as to enrich for spermatogonia, spermatocytes, or mature sperm. Different methods for processing the testes such that cysts either remain intact or are disrupted as needed are described. An advantage in using *Drosophila* testes as a model system is that, compared to *Drosophila* oocytes and embryos, antibodies and dyes can easily penetrate cells following their dispersal from the testes, and fewer washing steps are required; thus, protocols can be performed in a relatively short time.

## Protocol:

### 1) Testes dissection

1.1) Anesthetize flies in a bottle or vial using a stream of CO<sub>2</sub> and transfer to a fly pad.

1.2) Sort flies under a dissecting microscope using a small paintbrush, and collect an appropriate number (depending on the experiment) of *Drosophila* males of the desired genotypes. Young males (0-2 days old) are ideal for examining cells throughout the earlier stages of spermatogenesis (e.g. spermatogonia, spermatocytes, and early post-meiotic spermatids), whereas slightly older males (2-5 days old) are ideal for examining cells in the final stages of spermatogenesis (in particular, mature sperm).

1.3) Use forceps to remove the wings from each fly (to prevent the flies from floating in liquid during dissection).

1.4) Add ~500 µl of phosphate-buffered saline (130 mM NaCl, 7 mM Na<sub>2</sub>HPO<sub>4</sub>, 3 mM NaH<sub>2</sub>PO<sub>4</sub>; PBS) in a drop to a silicone-coated dissection dish on a black background. Other aqueous solutions have been successfully used for testes dissection<sup>3</sup>.

1.5) Point forceps towards the anterior of the fly, grasp it by the thorax, and immerse it in the PBS drop. While viewing through the dissecting microscope, use another pair of forceps to grasp and pull the external genitalia (dark brown structure located at the posterior end of the ventral abdomen) posteriorly until it detaches from the abdomen. In most cases, the testes, seminal vesicles, and accessory gland will be removed from the abdomen along with the external genitalia; if not, insert a single pair of forceps into the abdomen and tease out the testes.

1.6) Separate testes from accessory gland and external genitalia using two pairs of forceps in the PBS drop (Figure 2). Wild-type testes are easily distinguished from neighboring white tissues by their yellow color. Proceed immediately to Step 2.

1.7) To isolate testes from pharate males (i.e. enclosed within the pupal case), an additional step must first be performed that involves removing the fly from the pupal case; this step has been previously described elsewhere<sup>31</sup>. Proceed with dissection as for the adult testes beginning at Step 1.2.

1.8) To isolate testes from larval males, perform a modification of a protocol for isolating *Drosophila* larval ovaries<sup>32</sup>. Briefly, male larvae can be distinguished from female larvae by the presence of a pair of large, clear, oval structures (larval testes) embedded in the posterior third of the fat body. To isolate larval testes, partially flay open the male larva to isolate the testes and the surrounding fat body from the abdomen as described for the isolation of larval ovaries. Proceed immediately to Step 2 of the protocol described herein; the testes can later be removed from the fat body just prior to mounting (Steps 2.3 or 3.14) as described for the ovaries<sup>32</sup>.

## **2) Sample preparation and live imaging**

2.1) Use a pair of forceps to gently place 2-3 pairs of testes in a drop of 4-5  $\mu$ l of PBS on a square glass cover slip. Note that the ratio of testes number to PBS volume may need to be adjusted: too much liquid will prevent cells from spreading properly when squashed, whereas too little liquid will cause cells to burst when squashed. Optional: Use siliconized cover slips to minimize adherence of tissue to cover slip in Step 3.2.

2.2) Use a pair of forceps to tear open each testis at an appropriate position so as to maximize the presence of the desired germline cell types in the preparation (note that the contents of the testis will mostly egress from the torn region onto the slide during the squashing step.) To enrich for spermatogonia and spermatocytes, tear open the testis adjacent to its apical tip (level 1, Figure 2B). To enrich for spermatocytes and spermatids, tear open the testis at a position slightly basal to level 1 (level 2, Figure 2B). To enrich for more mature germline cells, tear open the testis closer to where the curvature begins (level 3, Figure 2B).

2.3) Gently place a glass microscope slide over the cover slip to squash the testes; do not apply pressure manually as the weight of the cover slip alone is sufficient to obtain a properly squashed sample. Try to avoid trapping air bubbles. Optional: Use poly-L-lysine coated microscope slides to promote adherence of tissue to slide in Step 3.2.

2.4) Use preparation immediately (ideally within 15 min of preparation) to observe live cells by phase-contrast microscopy; for transgenic flies with expression of fluorescently tagged proteins in the testes, live cells can be examined by fluorescence microscopy at this step. Alternatively, proceed with fixation and antibody staining (Step 3).

2.5) Gently wick any excess liquid from under the coverslip using a cleaning wipe to allow flattening of the preparation until the germ cells are clearly in focus.

## **3) Formaldehyde fixation and antibody staining**

3.1) Snap freeze each slide containing squashed testes (from Step 2) using a pair of metal tongs to immerse it briefly in liquid nitrogen (until liquid nitrogen stops bubbling).

3.2) Remove the cover slip immediately using a razor blade.

3.3) Use metal tongs to transfer slides to a pre-chilled glass slide rack filled with ice-cold 95% ethanol (spectrophotometric grade, methanol-free). Store at -20°C for 10 min.

3.4) Use metal tongs to transfer slides to a glass slide rack filled with 4% formaldehyde in PBS plus 0.1% Triton X-100 (PBS-T). Store at room temperature for 7 min.

3.5) Use metal tongs to transfer slides to a glass slide rack filled with PBS. Wash slides in PBS for 5 min at room temperature. Repeat once. Perform all washes by discarding solution in the glass slide rack (i.e. by pouring it out) and replacing with fresh solution.



3.6) Discard the PBS and immerse slides in PBS-T for 30 min at room temperature to permeabilize cell membranes.

3.7) Wash slides in PBS for 5 min at room temperature. Repeat twice.

3.8) Blocking step (optional): Immerse slides in PBS plus 1% BSA for 45 min at room temperature.

3.9) Use a hydrophobic barrier pen to draw a circle on the slide around squashed tissue (easily visible by eye) in order to confine the antibody solutions (added in steps 3.9 and 3.11). The tissue should be kept moist at all times while performing immunostaining.

3.10) Add 30-40  $\mu$ l of primary antibody (diluted in PBS-T, 1:400 to 1:50, depending on antibody) to tissue within the circle. If blocking was performed, dilute primary antibody in PBS-T plus 1% BSA. Anti-gamma-tubulin antibody (for staining of centrosomes in Figure 4) was diluted 1:100. Incubate in a moist, dark chamber (e.g. closed plastic box with damp paper towels) for 2 hr at room temperature or overnight at 4°C.

3.11) Wash slides in PBS for 5 min at room temperature three times. If blocking was performed, wash twice in PBS-T and once in PBS (5 min at room temperature each).

3.12) Add 30-40  $\mu$ l of fluorophore-conjugated secondary antibody (diluted 1:400 in PBS) to the tissue and incubate in the dark for 1-2 hr at room temperature.

3.13) Wash slides in PBS for 5 min at room temperature. Repeat twice.

3.14) Add 30-40  $\mu$ l of DAPI solution (0.2  $\mu$ g/ml in PBS) to the tissue within the circle.

3.15) Gently place a glass cover slip over the tissue, taking care to avoid trapping air bubbles. If air bubbles should appear, carefully move around the cover slip without destroying the squash until the bubbles escape from the sides of the cover slip.

3.16) Use a cleaning wipe to blot excess DAPI from the edges of the slide.

3.17) Seal the cover slip to the slide using clear nail polish.

3.18) Use this preparation within the next 3-4 hr to view immunostained cells by fluorescent microscopy. For longer-term storage of slides (up to at least several weeks), use a glycerol-based hard mount media with DAPI, and store slides at -20°C.

3.19) Alternatively, fix samples in methanol instead of formaldehyde (depending on the antigen). After completing the entire protocol through Step 3.2, immerse slides of squashed testes in methanol for 10 min at -20°C and proceed with Step 3.5 onward.

## Representative Results:

An example of a properly dissected pair of *Drosophila* male reproductive organs is shown in Figure 2A. Testes removed from the abdomen of the adult male fly are typically attached to the ejaculatory duct (brown, Figure 2A') and a pair of accessory glands (green, Figure 2A') via a pair of seminal vesicles (blue, Figure 2A'). To separate the testes from most of the accompanying somatic tissue, the ejaculatory duct and the accessory glands should be detached and discarded such that only the testes pair and the seminal vesicles remain (Figure 2B, 2B'). The seminal vesicles can also be removed, leaving only the testes pair to be processed further.

The age of the adult males selected for testes dissection is an important consideration. In young males (0-2 days after eclosion), the seminal vesicles are small and nearly empty, and the testes are at their maximal diameter (as in Figure 2). Using younger males ensures a relatively large number of dividing germline cells (undergoing either mitosis or meiosis) and early post-meiotic spermatids. When older males (3-5 days after eclosion) are used for dissection (image not shown), the seminal vesicles are more prominent because they are bulging with sperm, and the testes are narrower than in younger males. Older males are preferable if the goal is to visualize mature sperm.

Owing to the ordered progression of developmental events along the length of the *Drosophila* testes, germline cells at specific stages of spermatogenesis can be enriched based on the position at which dissected testes are torn prior to squashing. For example, tearing open the testis near its apical tip (level 1, Figure 2B') yields an abundance of cells in early stages of spermatogenesis. Figure 3A shows a phase-contrast image of a representative population of spermatogonia (white arrow), early primary spermatocytes (yellow arrow), and late primary spermatocytes (red arrow) obtained in this way. Alternatively, tearing open the testis at a slightly more basal position (level 2, Figure 2B') yields primarily spermatocytes and spermatids. Figure 3B shows a phase-contrast image of a representative cell population of primary spermatocytes (red arrow), round spermatids (green arrow), elongating spermatids (orange arrow), and mature sperm bundles (blue arrow) obtained in this way.

Phase-contrast imaging of testes can be used to characterize defects in *Drosophila* spermatogenesis resulting from mutations in genes that are critical for this process. The round spermatids have a very stereotypical appearance when viewed through a phase-contrast microscope. Each of these immature spermatids has a single, phase-light, round nucleus and a single, phase-dark, round mitochondrial aggregate of roughly the same size (marked by purple arrowhead and arrow, respectively, in Figure 3C). Variation in the relative numbers or sizes of these organelles can result from aberrant meiotic divisions (see discussion). An example of such a defect is shown in Figure 3D. Round spermatids from adult males with mutation of the *asunder* (*asun*) gene contain a single large mitochondrial aggregate and multiple small nuclei as a result of defects in cytokinesis and chromosome segregation<sup>29</sup>.

Fluorescence microscopy is another powerful approach for studying *Drosophila* spermatogenesis. An example of a fluorescent image of fixed cells from a squashed testes sample is shown in Figure 4. Testes were obtained from transgenic flies expressing GFP-beta1-tubulin (product of  $\beta Tub56D$  gene fused at its C-terminal end to GFP and under control of the *Ubi-p63E* ubiquitin gene promoter; gift from H. Oda and Y. Akiyama-Oda, JT Biohistory Research Hall, Osaka, Japan) in order to label the microtubules (green in Figure 4D, grayscale in Figure 4A). The transgenic testes were immunostained using a mouse antibody against gamma-tubulin (secondary antibody: anti-mouse Cy3) to mark centrosomes (red in Figure 4D, grayscale in Figure 4C) and DAPI-stained to mark DNA (blue in Figure 4D, grayscale in Figure 4B). Cells at different stages of spermatogenesis can be readily identified by examining the arrangement of the microtubules, centrosomes, and chromosomes (see legend)<sup>19,24</sup>.

### Figure Legends:

**Figure 1. Schematic of germline cell divisions in *Drosophila* males.** Each stem cell division produces a gonial cell that undergoes four rounds of mitotic divisions with incomplete cytokinesis to produce a 16-cell cyst of primary spermatocytes. Each primary spermatocyte undergoes a prolonged growth phase prior to undergoing the two meiotic divisions, again with incomplete cytokinesis, to form a 32-cell cyst of interconnected secondary spermatocytes followed by a 64-cell cyst of interconnected round spermatids. Round spermatids are characterized by the presence of a phase-light nucleus and a phase-dark mitochondrial aggregate (the Nebenkern) of similar sizes. The round spermatids undergo elongation and individualization to form the mature sperm. Mature sperm heads can be identified by their needle-shaped nuclei. Nuclei are shown in blue; Nebenkerne (mitochondrial aggregates) in black; cytoplasm in tan.

**Figure 2. Reproductive organs of *Drosophila* males.** Young adult males (0-2 days after eclosion) were selected for dissection. Light micrographs of isolated reproductive organs are shown in A and B with corresponding cartoons in A' and B'. (A, A') *Drosophila* testes (red) removed from the abdomen of an adult male fly are connected to the ejaculatory duct (brown) via the seminal vesicles (blue). A pair of accessory glands (green) is also attached to the ejaculatory duct. (B, B') The testes should be separated from the accessory glands before slide preparation. Prior to squashing, tear open the testes at level 1 to enrich for cells at early stages of spermatogenesis; at level 2 to obtain a mixed population of meiotic and post-meiotic germline cells; and at level 3 to enrich for mature sperm. Scale bar, 250  $\mu$ m.

**Figure 3. Phase-contrast images of *Drosophila* testes.** (A) An abundance of cells at early stages of spermatogenesis, including spermatogonia (white arrow), early primary spermatocytes (yellow arrow), and late primary spermatocytes (red arrow) are typically released when the testis is torn at level 1 (see Figure 2B'). Two or more interconnected

cells (a consequence of incomplete cytokinesis) often fuse completely as an artifact of the squashing procedure (yellow arrowhead marks a fusion of two early spermatocytes). (B) A combination of spermatocytes (red arrow marks late primary spermatocyte) and post-meiotic cells, including round spermatids (green arrow), elongating spermatids (orange arrow marks partial cyst), and mature sperm bundles (blue arrow), are typically released when the testis is torn at level 2 (see Figure 2B'). (C, D) Phase-contrast imaging of squashed testes can be used to readily identify defects in the abundant and stereotypical round spermatids. Wild-type spermatids have one nucleus (phase-light; marked by purple arrowhead) attached to a single mitochondrial aggregate (phase-dark; marked by purple arrow) of roughly equal size (C). Spermatids from *asun*<sup>f02815</sup> testes contain multiple small nuclei and one large mitochondrial aggregate as a result of failed cytokinesis and errors in chromosome segregation (D). Scale bar, 10  $\mu$ m.

**Figure 4. Fluorescent image of *Drosophila* testes.** Preparations of squashed testes isolated from males expressing GFP-tagged beta1-tubulin (green in D, grayscale in A) were fixed and stained for both DNA (DAPI; blue in D, grayscale in B) and centrosomes (gamma-tubulin antibody; red in D, grayscale in C). A dividing spermatocyte (white arrowhead) can be seen next to a large field of round spermatids (white arrow marks a representative cells) and a bundle of mature sperm (yellow arrow). Scale bar, 10  $\mu$ m.

## Discussion:

Although the testes of wild-type flies can be readily identified due to their yellow color (in contrast the neighboring white tissues), the testes of *white* mutant flies are white and thus can occasionally be confused with the gut. Most transgenic strains, which are typically in a *white* background, also have white testes because the mini-*white* gene found in *P*-elements does not promote pigment accumulation in the testes. When *Drosophila* testes cannot be distinguished by color, other easily recognizable features include their spiral pattern and occurrence in pairs<sup>12</sup>. Note that some workers find it easier to use dissection needles instead of forceps to isolate the testes<sup>12</sup>.

A critical step of this protocol is the preparation of the squashed testes. One useful approach is to hover the slide a few millimeters over the cover slip containing the testes such that the surface tension of the PBS on the cover slip lifts up the cover slip containing the tissue towards the slide. This method tends to disrupt cysts and spread out cells on the slide, making it ideal for imaging individual cells. Alternatively, to maintain entire or partial cysts for imaging, the volume of PBS placed on the cover slip can be increased (from 4-5  $\mu$ l to 7-8  $\mu$ l).

If a particular *Drosophila* mutant of interest does not survive to adulthood, then larval or pupal testes can alternatively be used to study spermatogenesis. In the protocol section, references are provided for the isolation of pharate males and larval ovaries; a modification of the latter protocol can be used to isolate larval testes. The steps for tearing, squashing, and staining larval or pupal testes are essentially identical to that described herein for the adult testes. Even if the fly line to be studied can reach adulthood, isolation of larval or pupal testes may be preferable if the goal is to obtain cells at the earliest stages of spermatogenesis. As described in the representative results section, cells in early or late stages of spermatogenesis can be enriched as desired by varying the level at which the testis is torn prior to squashing.

Phase-contrast microscopy offers a relatively simple approach for studying *Drosophila* spermatogenesis. One advantage of phase-contrast microscopy over immunostaining and fluorescent microscopy is that less time is required to prepare the samples. All of the major stages of spermatogenesis can be readily identified using this technique<sup>24</sup>. Indeed, several groups have used phase-contrast microscopic analysis of testes as a primary screen for characterizing the phenotypes of *Drosophila* male-sterile mutant lines<sup>21-23</sup>. During meiotic divisions, mitochondria and chromosomes are equally partitioned to daughter cells. A unique feature of spermatogenesis in *Drosophila* and other insects involves formation of a mitochondrial aggregate (the Nebenkern) in round spermatids<sup>24</sup>. Round spermatids contain a phase-dark Nebenkern and a phase-light nucleus of roughly equal size in a 1:1 ratio (Figure 3). The diameter of the nucleus reflects the DNA content of the round spermatids, so errors in chromosome segregation during meiosis can lead to variability in nuclear size<sup>33</sup>. Disruption of meiotic cytokinesis following chromosome segregation results in multinucleated round spermatids in which the Nebenkern fuse into a single aggregate<sup>34</sup>. Hence, any variation in the 1:1 ratio or in the size or shape of the Nebenkern and nucleus in round spermatids can be readily

detected by phase-contrast microscopy of live testes and is often diagnostic of defects in meiosis. Fusion of two or more interconnected cells within a common cyst frequently occurs as an artifact of the squashing procedure (Figure 3A, yellow arrowhead); the 1:1 ratio of nuclei to Nebenkerne, however, is still maintained.

Immunostaining of fixed preparations of *Drosophila* testes can be performed to stage cells undergoing spermatogenesis as well as to assess expression patterns and subcellular localizations of proteins of interest. A refined scheme for classifying the stages of *Drosophila* spermatogenesis based on the cellular morphology, chromatin organization, and microtubule arrangements of testes cells immunostained for tubulin and DNA-stained has been described<sup>19</sup>. *Drosophila* primary spermatocytes are relatively large cells, and the meiotic spindles can be clearly observed using this approach. Co-immunostaining for centrosomes (for example, using antibodies against gamma-tubulin) can be performed to obtain a more precise view of the meiotic spindle structure<sup>29,30</sup>. Formaldehyde is a suitable fixative when immunostaining testes with a wide range of antibodies (for example, anti-lamin and anti-dynein heavy chain). The morphology of microtubules and centrosomes, however, is better preserved with methanol; hence, methanol is typically used as the fixative when performing immunostaining with antibodies against alpha-tubulin and gamma-tubulin.

If antibodies against a protein of interest are unavailable, transgenic *Drosophila* lines expressing a fluorescently tagged (e.g. mCherry or GFP) version of the protein can be generated as an alternative approach. The subcellular localization of the protein can then be determined by using a microscope to view the GFP fluorescence in live or fixed preparations of tissue; alternatively, anti-GFP antibodies can be used to detect the fusion protein in fixed samples. In Figure 4, microtubules in a fixed testes preparation were visualized via the intrinsic fluorescence of GFP-tagged beta1-tubulin (expressed from a transgene under control of a globally expressed ubiquitin promoter). Alternatively, transgenic flies in which expression is under the control of a tissue-specific promoter; for example, the promoter of the *beta2-tubulin* gene have been used for testes-specific expression<sup>35</sup>. Alternatively, the expression of a protein of interest can be restricted to specific male germline cells by using the UAS-Gal4 system<sup>36</sup>. *nanos*-Gal4 can be used to induce the expression of a protein under the control of a UAS promoter within spermatogonial cells, while *bam*-Gal4 can be used to induce its expression within spermatocytes<sup>37</sup>. Knockdown of a protein of interest can also be induced in the testes by expressing an RNAi hairpin construct under the control of a UAS promoter in conjunction with these Gal4 drivers<sup>37</sup>.

The development of methods for live-image analysis of *Drosophila* testes cells has expanded the range of questions that can be addressed using this system. The events of meiotic cytokinesis can be visualized by phase-contrast microscopy of spermatocytes cultured in fibrin clots inside a perfusion chamber in order to prolong the life of the cells<sup>35</sup>. Time-lapse confocal microscopy of *Drosophila* spermatocytes expressing fluorescently tagged proteins has also been a powerful approach (for example, to study meiotic spindle assembly)<sup>38</sup>. The use of confocal microscopy for live imaging of an earlier stage, the dividing germline stem cells of the *Drosophila* testes,

has led to an increased understanding of stem cell regulation<sup>39,40</sup>. In addition to the phase-contrast and immunofluorescence microscopy approaches presented herein, transmission electron microscopy has also been used extensively to study *Drosophila* spermatogenesis<sup>31</sup>.

In addition to imaging, *Drosophila* testes can be used as a source of material for biochemical analysis. For immunoblotting experiments, dissected fly testes can be homogenized in 6x sample buffer (5  $\mu$ l/testes pair), boiled, and directly loaded on a SDS-PAGE gel (~4 testes pairs/lane). For example, this approach has been used to assess the levels of dynein-dynactin components in the testes of several *Drosophila* mutants<sup>29,30</sup>. Testes extracts can alternatively be prepared by homogenizing the tissue in non-denaturing lysis buffer if it is important to maintain protein integrity. For example, *Drosophila* testes extracts have been used in co-immunoprecipitation experiments to demonstrate the presence of stable protein complexes in this tissue<sup>41-43</sup>.

**Acknowledgments:**

The authors would like to thank Michael Anderson for establishing in the Lee lab these accepted methods for studying spermatogenesis with expert advice from Karen Hales. H. Oda and Y. Akiyama-Oda generously provided the  $\beta$ -tubulin-GFP fly stock. This work was supported by an NIH R01 grant to L.A.L. (GM074044).

**Disclosures:**

The authors declare that they have no competing financial interests.

## References:

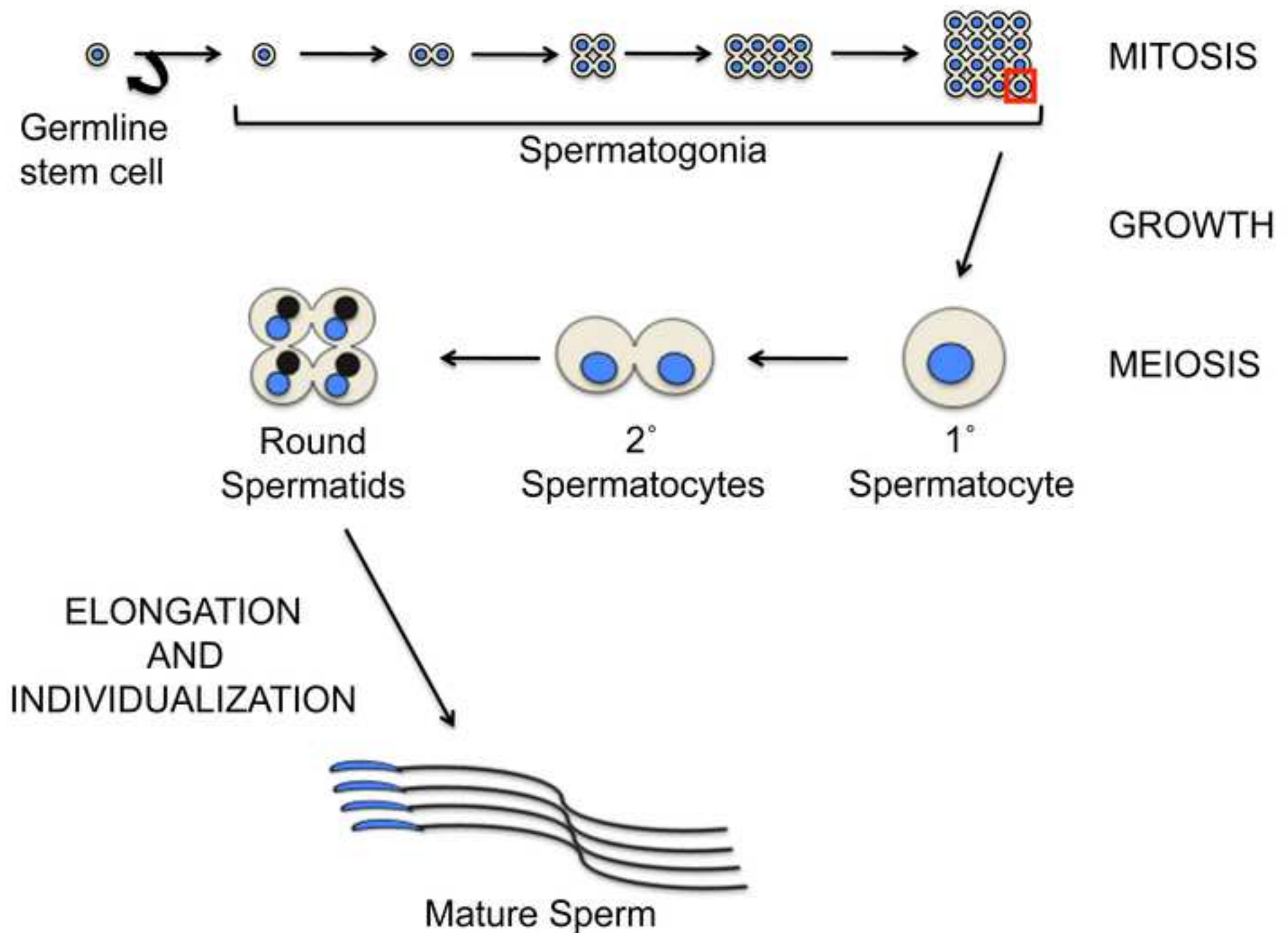
- 1 McKim, K. S., Joyce, E. F. & Jang, J. K. Cytological analysis of meiosis in fixed *Drosophila* ovaries. *Methods in molecular biology* **558**, 197-216, doi:10.1007/978-1-60761-103-5\_12 (2009).
- 2 Weil, T. T., Parton, R. M. & Davis, I. Preparing individual *Drosophila* egg chambers for live imaging. *J Vis Exp*, doi:10.3791/3679 (2012).
- 3 Bonaccorsi, S., Giansanti, M.G., Cenci, G., & Gatti, M. in *Drosophila Protocols* (ed W. Sullivan, Ashburner, M., Hawley, R.S.) 87-109 (Cold Spring Harbor Laboratory Press, 2000).
- 4 Bonaccorsi, S., Giansanti, M. G., Cenci, G. & Gatti, M. Immunostaining of *Drosophila* testes. *Cold Spring Harbor protocols* **2011**, 1273-1275, doi:10.1101/pdb.prot065771 (2011).
- 5 Bonaccorsi, S., Giansanti, M. G., Cenci, G. & Gatti, M. Methanol-acetone fixation of *Drosophila* testes. *Cold Spring Harbor protocols* **2011**, 1270-1272, doi:10.1101/pdb.prot065763 (2011).
- 6 Bonaccorsi, S., Giansanti, M. G., Cenci, G. & Gatti, M. Preparation of live testis squashes in *Drosophila*. *Cold Spring Harbor protocols* **2011**, prot5577, doi:10.1101/pdb.prot5577 (2011).
- 7 Bonaccorsi, S., Giansanti, M. G., Cenci, G. & Gatti, M. Formaldehyde fixation of *Drosophila* testes. *Cold Spring Harbor protocols* **2012**, doi:10.1101/pdb.prot067355 (2012).
- 8 Bonaccorsi, S., Giansanti, M. G., Cenci, G. & Gatti, M. Paraformaldehyde fixation of *Drosophila* testes. *Cold Spring Harbor protocols* **2012**, 102-104, doi:10.1101/pdb.prot067330 (2012).
- 9 Bonaccorsi, S., Giansanti, M. G., Cenci, G. & Gatti, M. F-actin staining of *Drosophila* testes. *Cold Spring Harbor protocols* **2012**, 105-106, doi:10.1101/pdb.prot067348 (2012).
- 10 Kibanov, M. V., Kotov, A. A. & Olenina, L. V. Multicolor fluorescence imaging of whole-mount *Drosophila* testes for studying spermatogenesis. *Analytical biochemistry* **436**, 55-64, doi:10.1016/j.ab.2013.01.009 (2013).
- 11 Singh, S. R. & Hou, S. X. Immunohistological techniques for studying the *Drosophila* male germline stem cell. *Methods in molecular biology* **450**, 45-59, doi:10.1007/978-1-60327-214-8\_3 (2008).
- 12 Zamore, P. D. & Ma, S. Isolation of *Drosophila melanogaster* Testes. *J Vis Exp*, e2641, doi:doi:10.3791/2641 (2011).
- 13 de Cuevas, M. & Matunis, E. L. The stem cell niche: lessons from the *Drosophila* testis. *Development* **138**, 2861-2869, doi:10.1242/dev.056242 (2011).
- 14 Fabian, L. & Brill, J. A. *Drosophila* spermiogenesis: Big things come from little packages. *Spermatogenesis* **2**, 197-212, doi:10.4161/spmg.21798 (2012).
- 15 Giansanti, M. G., Sechi, S., Frappaolo, A., Belloni, G. & Piergentili, R. Cytokinesis in *Drosophila* male meiosis. *Spermatogenesis* **2**, 185-196, doi:10.4161/spmg.21711 (2012).
- 16 Matunis, E. L., Stine, R. R. & de Cuevas, M. Recent advances in *Drosophila* male germline stem cell biology. *Spermatogenesis* **2**, 137-144, doi:10.4161/spmg.21763 (2012).

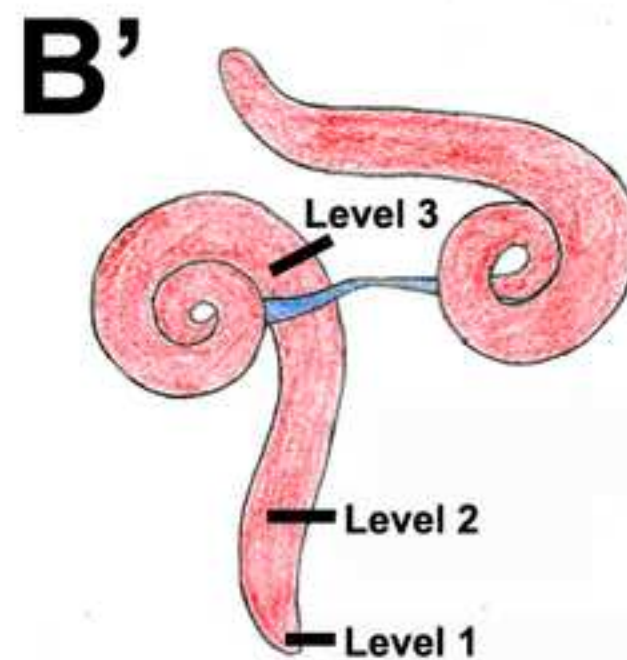
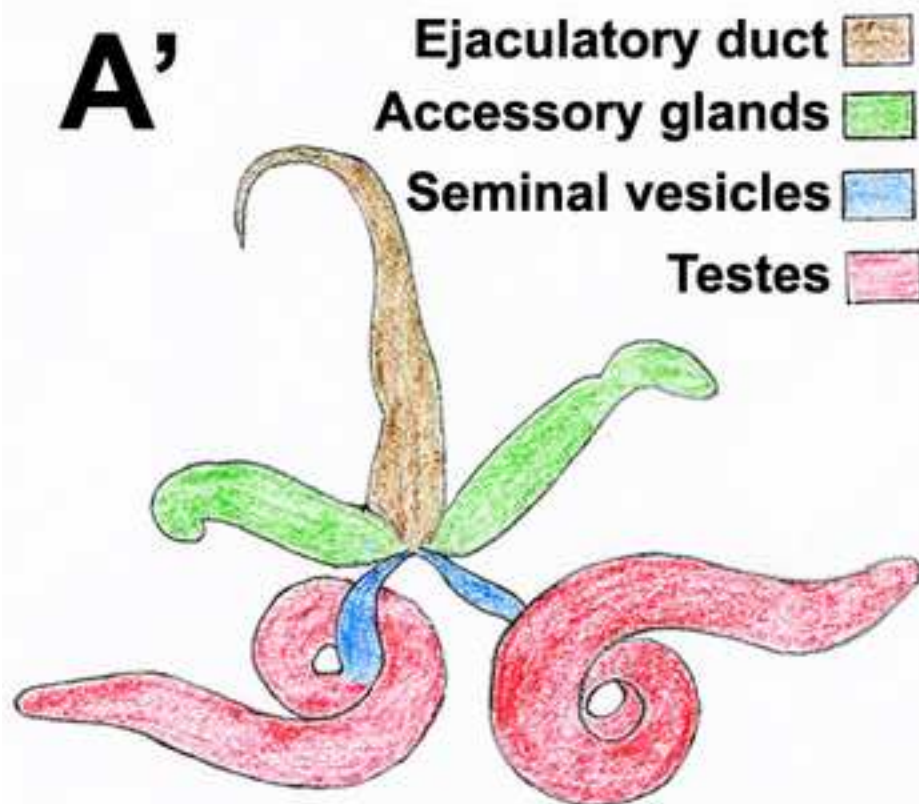
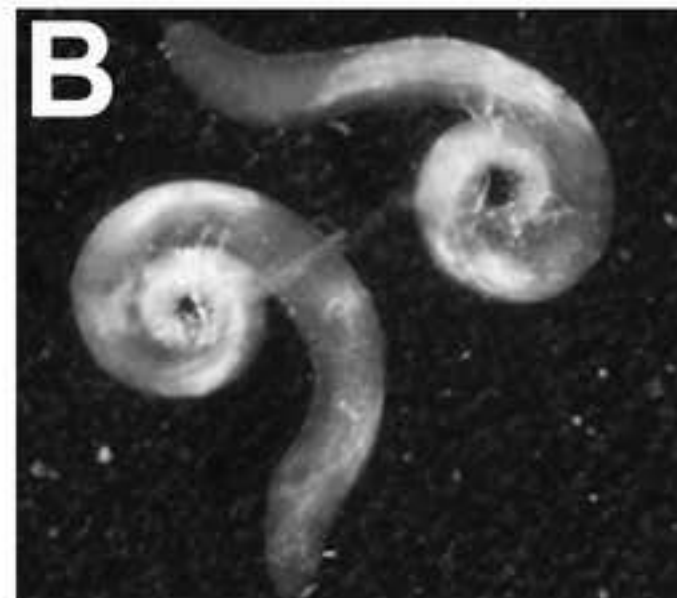
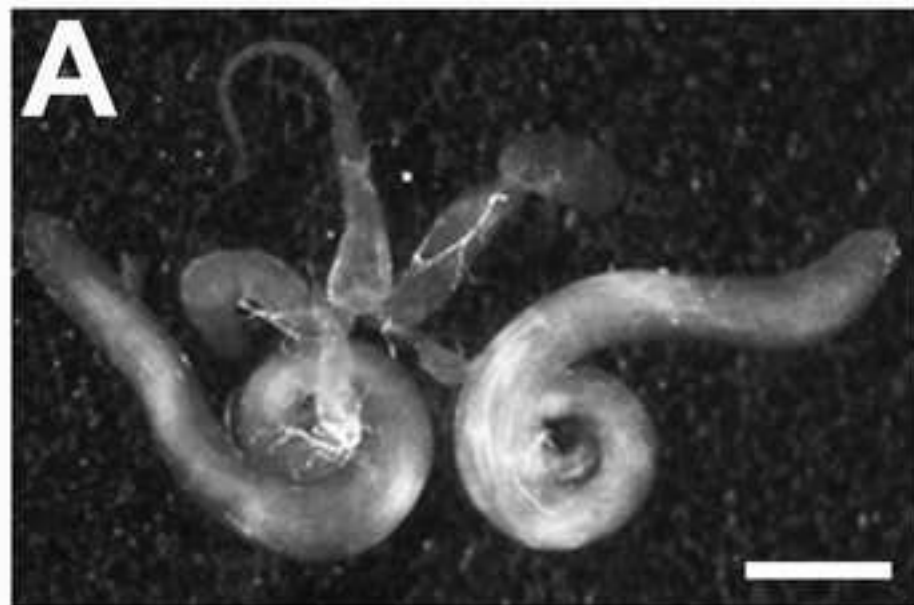


- 17 McKee, B. D., Yan, R. & Tsai, J. H. Meiosis in male *Drosophila*. *Spermatogenesis* **2**, 167-184, doi:10.4161/spmg.21800 (2012).
- 18 Zoller, R. & Schulz, C. The *Drosophila* cyst stem cell lineage: Partners behind the scenes? *Spermatogenesis* **2**, 145-157, doi:10.4161/spmg.21380 (2012).
- 19 Cenci, G., Bonaccorsi, S., Pisano, C., Verni, F. & Gatti, M. Chromatin and microtubule organization during premeiotic, meiotic and early postmeiotic stages of *Drosophila melanogaster* spermatogenesis. *Journal of cell science* **107 (Pt 12)**, 3521-3534 (1994).
- 20 Rebollo, E. & Gonzalez, C. Visualizing the spindle checkpoint in *Drosophila* spermatocytes. *EMBO reports* **1**, 65-70 (2000).
- 21 Castrillon, D. H. *et al.* Toward a molecular genetic analysis of spermatogenesis in *Drosophila melanogaster*: characterization of male-sterile mutants generated by single P element mutagenesis. *Genetics* **135**, 489-505 (1993).
- 22 Giansanti, M. G. *et al.* Genetic dissection of meiotic cytokinesis in *Drosophila* males. *Mol Biol Cell* **15**, 2509-2522 (2004).
- 23 Wakimoto, B. T., Lindsley, D. L. & Herrera, C. Toward a comprehensive genetic analysis of male fertility in *Drosophila melanogaster*. *Genetics* **167**, 207-216 (2004).
- 24 Fuller, M. T. in *The Development of Drosophila melanogaster* (ed editors M. Bate and A. Martinez-Arias) 71-147 (Cold Spring Harbor Laboratory Press, 1993).
- 25 Wolfner, M. F. Tokens of love: functions and regulation of *Drosophila* male accessory gland products. *Insect biochemistry and molecular biology* **27**, 179-192 (1997).
- 26 Tram, U. & Wolfner, M. F. Male seminal fluid proteins are essential for sperm storage in *Drosophila melanogaster*. *Genetics* **153**, 837-844 (1999).
- 27 Kemphues, K. J., Raff, E. C., Raff, R. A. & Kaufman, T. C. Mutation in a testis-specific beta-tubulin in *Drosophila*: analysis of its effects on meiosis and map location of the gene. *Cell* **21**, 445-451 (1980).
- 28 Gunsalus, K. C. *et al.* Mutations in twinstar, a *Drosophila* gene encoding a cofilin/ADF homologue, result in defects in centrosome migration and cytokinesis. *The Journal of cell biology* **131**, 1243-1259 (1995).
- 29 Anderson, M. A. *et al.* Asunder is a critical regulator of dynein-dynactin localization during *Drosophila* spermatogenesis. *Mol Biol Cell* **20**, 2709-2721, doi:E08-12-1165 [pii]10.1091/mbc.E08-12-1165 (2009).
- 30 Sitaram, P., Anderson, M. A., Jodoin, J. N., Lee, E. & Lee, L. A. Regulation of dynein localization and centrosome positioning by Lis-1 and asunder during *Drosophila* spermatogenesis. *Development* **139**, 2945-2954, doi:10.1242/dev.077511 (2012).
- 31 Martins, A. R., Machado, P., Callaini, G. & Bettencourt-Dias, M. Microscopy methods for the study of centriole biogenesis and function in *Drosophila*. *Methods in cell biology* **97**, 223-242, doi:10.1016/S0091-679X(10)97013-1 (2010).
- 32 Maimon, I. & Gilboa, L. Dissection and staining of *Drosophila* larval ovaries. *J Vis Exp*, doi:10.3791/2537 (2011).

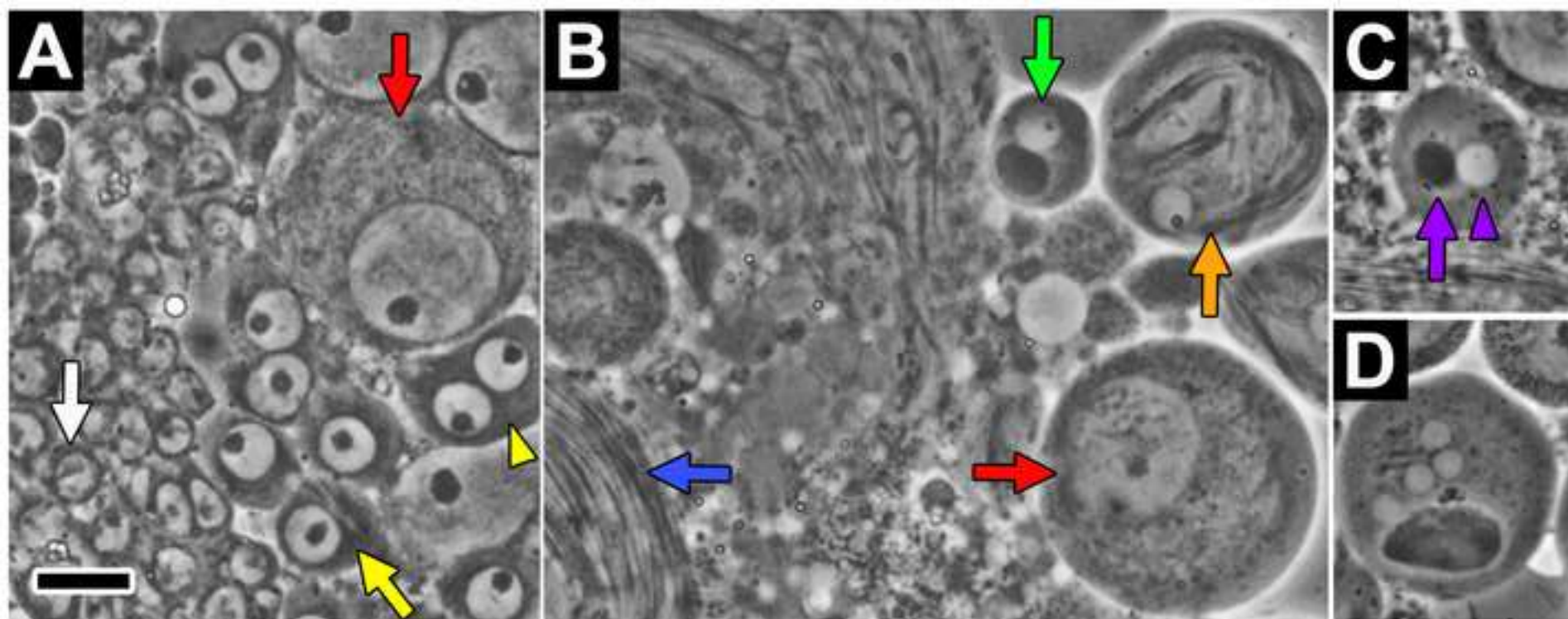
- 33 Gonzalez, C., Casal, J. & Ripoll, P. Relationship between chromosome content and nuclear diameter in early spermatids of *Drosophila melanogaster*. *Genetical research* **54**, 205-212 (1989).
- 34 Liebrich, W. The effects of cytochalasin B and colchicine on the morphogenesis of mitochondria in *Drosophila hydei* during meiosis and early spermiogenesis. An in vitro study. *Cell and tissue research* **224**, 161-168 (1982).
- 35 Wong, R. *et al.* PIP2 hydrolysis and calcium release are required for cytokinesis in *Drosophila* spermatocytes. *Current biology : CB* **15**, 1401-1406, doi:10.1016/j.cub.2005.06.060 (2005).
- 36 Brand, A. H. & Perrimon, N. Targeted gene expression as a means of altering cell fates and generating dominant phenotypes. *Development* **118**, 401-415 (1993).
- 37 White-Cooper, H. Tissue, cell type and stage-specific ectopic gene expression and RNAi induction in the *Drosophila* testis. *Spermatogenesis* **2**, 11-22, doi:10.4161/spmg.19088 (2012).
- 38 Rebollo, E., Llamazares, S., Reina, J. & Gonzalez, C. Contribution of noncentrosomal microtubules to spindle assembly in *Drosophila* spermatocytes. *PLoS biology* **2**, E8, doi:10.1371/journal.pbio.0020008 (2004).
- 39 Cheng, J. & Hunt, A. J. Time-lapse live imaging of stem cells in *Drosophila* testis. *Current protocols in stem cell biology* **Chapter 2**, Unit 2E 2, doi:10.1002/9780470151808.sc02e02s11 (2009).
- 40 Sheng, X. R. & Matunis, E. Live imaging of the *Drosophila* spermatogonial stem cell niche reveals novel mechanisms regulating germline stem cell output. *Development* **138**, 3367-3376, doi:10.1242/dev.065797 (2011).
- 41 Belloni, G. *et al.* Mutations in *Cog7* affect Golgi structure, meiotic cytokinesis and sperm development during *Drosophila* spermatogenesis. *Journal of cell science* **125**, 5441-5452, doi:10.1242/jcs.108878 (2012).
- 42 Moon, S., Cho, B., Min, S. H., Lee, D. & Chung, Y. D. The THO complex is required for nucleolar integrity in *Drosophila* spermatocytes. *Development* **138**, 3835-3845, doi:10.1242/dev.056945 (2011).
- 43 Wang, Z. & Mann, R. S. Requirement for two nearly identical TGIF-related homeobox genes in *Drosophila* spermatogenesis. *Development* **130**, 2853-2865 (2003).

\*Figure 1  
[Click here to download high resolution image](#)



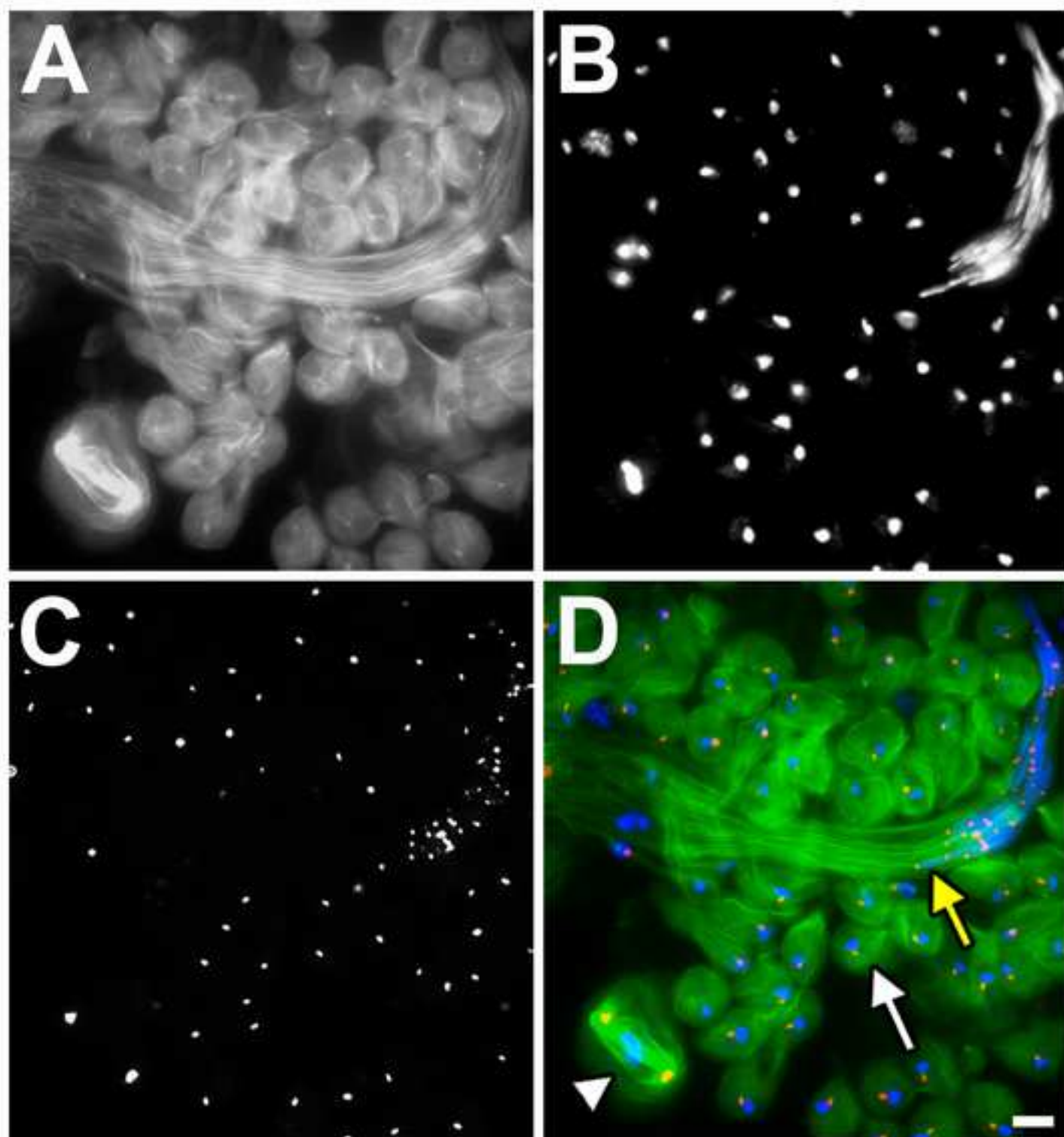


\*Figure 3  
[Click here to download high resolution image](#)





\*Figure 4  
[Click here to download high resolution image](#)



Name of Reagent/Material	Company	Catalog Number
Sylgard	World Precision Instruments	SYLG184
PAP pen	Fisher Scientific	NC9888126
Clear nail protector	Wet n Wild	7780235001
ProLong Gold Antifade Reagent with DAPI	Life Technologies	P36931
Mouse anti-gamma-tubulin antibody (clone GTU-88)	Sigma-Aldrich	T6557
Cy3-AffiniPure Goat Anti-Mouse IgG	Jackson ImmunoResearch	115-165-003
Triton X-100	Fisher Scientific	BP151-100
Ethanol	Fisher Scientific	AC61511-0040
Methanol	Fisher Scientific	A412-4
16% Formaldehyde	Thermo Fisher Scientific	28908
Sigmacote	Sigma-Aldrich	SL2
DAPI	Sigma-Aldrich	D-9542
	Research Products	
NaCl	International Corp.	S23020
Na <sub>2</sub> HPO <sub>4</sub>	Sigma-Aldrich	S9763
NaH <sub>2</sub> PO <sub>4</sub>	Sigma-Aldrich	S0751
Kimwipes delicate task wipers	Fisher Scientific	S47299
	Research Products	
BSA	International Corp.	A30075
Glass Coplin staining jar, screw cap	Electron Microscopy Sciences	70315
Single frosted microscope slides	Corning	2948-75X25
Poly-L-lysine coated microscope slides	Polysciences, Inc.	22247-1
Square cover glass	Corning	2865-22
Razor blades	Fisher Scientific	12-640
Kimax Petri dish	Fisher Scientific	S31473
Forceps	Dumont	52100-51S

**Name of Equipment**

Stemi 2000-CS stereoscope

Eclipse 80i

Plan-Fluor 40x objective

Axiophot

Plan-Neofluar Ph2 40x objective

**Company**

Carl Zeiss

Nikon

Nikon

Carl Zeiss

Carl Zeiss



## Comments

Two-part silicon elastomer for making silicone-coated dissection dish from Kimax Petri dish  
Ted Pella #22309

Use according to manufacturer's directions to  
siliconize cover slips  
0.5 mg/ml in 75% ethanol; store at -20°C

Molecular biology grade

Optional (to replace untreated microscope  
slides )

Kimble #23060 10015 EMD  
Pattern 5 INOX

## ARTICLE AND VIDEO LICENSE AGREEMENT

Title of Article:

Author(s):

Item 1 (check one box): The Author elects to have the Materials be made available (as described at <http://www.jove.com/publish>) via: ☒ Standard Access ☐ Open Access

Item 2 (check one box):

- ☒ The Author is NOT a United States government employee.
- ☐ The Author is a United States government employee and the Materials were prepared in the course of his or her duties as a United States government employee.
- ☐ The Author is a United States government employee but the Materials were NOT prepared in the course of his or her duties as a United States government employee.

### ARTICLE AND VIDEO LICENSE AGREEMENT

1. Defined Terms. As used in this Article and Video License Agreement, the following terms shall have the following meanings: “**Agreement**” means this Article and Video License Agreement; “**Article**” means the article specified on the last page of this Agreement, including any associated materials such as texts, figures, tables, artwork, abstracts, or summaries contained therein; “**Author**” means the author who is a signatory to this Agreement; “**Collective Work**” means a work, such as a periodical issue, anthology or encyclopedia, in which the Materials in their entirety in unmodified form, along with a number of other contributions, constituting separate and independent works in themselves, are assembled into a collective whole; “**CRC License**” means the Creative Commons Attribution-Non Commercial-No Derivs 3.0 Unported Agreement, the terms and conditions of which can be found at: <http://creativecommons.org/licenses/by-nc-nd/3.0/legalcode>; “**Derivative Work**” means a work based upon the Materials or upon the Materials and other pre-existing works, such as a translation, musical arrangement, dramatization, fictionalization, motion picture version, sound recording, art reproduction, abridgment, condensation, or any other form in which the Materials may be recast, transformed, or adapted; “**Institution**” means the institution, listed on the last page of this Agreement, by which the Author was employed at the time of the creation of the Materials; “**JoVE**” means MyJoVE Corporation, a Massachusetts corporation and the publisher of *The Journal of Visualized Experiments*; “**Materials**” means the Article and / or the Video; “**Parties**” means the Author and JoVE; “**Video**” means any video(s) made by the Author, alone or in conjunction with any other parties, or by JoVE or its affiliates or agents, individually or in collaboration with the Author or any other parties, incorporating all or any portion of the Article, and in which the Author may or may not appear.

2. Background. The Author, who is the author of the Article, in order to ensure the dissemination and protection of the Article, desires to have the JoVE publish the Article and create and transmit videos based on the Article. In furtherance of such goals, the Parties desire to memorialize in this Agreement the respective rights of each Party in and to the Article and the Video.

3. Grant of Rights in Article. In consideration of JoVE agreeing to publish the Article, the Author hereby grants to JoVE, subject to **Sections 4** and **7** below, the exclusive, royalty-free, perpetual (for the full term of copyright in the Article, including any extensions thereto) license (a) to publish, reproduce, distribute, display and store the Article in all forms, formats and media whether now known or hereafter developed (including without limitation in print, digital and electronic form) throughout the world, (b) to translate the Article into other languages, create adaptations, summaries or extracts of the Article or other Derivative Works (including, without limitation, the Video) or Collective Works based on all or any portion of the Article and exercise all of the rights set forth in (a) above in such translations, adaptations, summaries, extracts, Derivative Works or Collective Works and (c) to license others to do any or all of the above. The foregoing rights may be exercised in all media and formats, whether now known or hereafter devised, and include the right to make such modifications as are technically necessary to exercise the rights in other media and formats. If the “Open Access” box has been checked in **Item 1** above, JoVE and the Author hereby grant to the public all such rights in the Article as provided in, but subject to all limitations and requirements set forth in, the CRC License.

4. Retention of Rights in Article. Notwithstanding the exclusive license granted to JoVE in **Section 3** above, the

Author shall, with respect to the Article, retain the non-exclusive right to use all or part of the Article for the non-commercial purpose of giving lectures, presentations or teaching classes, and to post a copy of the Article on the Institution's website or the Author's personal website, in each case provided that a link to the Article on the JoVE website is provided and notice of JoVE's copyright in the Article is included. All non-copyright intellectual property rights in and to the Article, such as patent rights, shall remain with the Author.

5. Grant of Rights in Video – Standard Access. This **Section 5** applies if the "Standard Access" box has been checked in **Item 1** above or if no box has been checked in **Item 1** above. In consideration of JoVE agreeing to produce, display or otherwise assist with the Video, the Author hereby acknowledges and agrees that, Subject to **Section 7** below, JoVE is and shall be the sole and exclusive owner of all rights of any nature, including, without limitation, all copyrights, in and to the Video. To the extent that, by law, the Author is deemed, now or at any time in the future, to have any rights of any nature in or to the Video, the Author hereby disclaims all such rights and transfers all such rights to JoVE.

6. Grant of Rights in Video – Open Access. This **Section 6** applies only if the "Open Access" box has been checked in **Item 1** above. In consideration of JoVE agreeing to produce, display or otherwise assist with the Video, the Author hereby grants to JoVE, subject to **Section 7** below, the exclusive, royalty-free, perpetual (for the full term of copyright in the Article, including any extensions thereto) license (a) to publish, reproduce, distribute, display and store the Video in all forms, formats and media whether now known or hereafter developed (including without limitation in print, digital and electronic form) throughout the world, (b) to translate the Video into other languages, create adaptations, summaries or extracts of the Video or other Derivative Works or Collective Works based on all or any portion of the Video and exercise all of the rights set forth in (a) above in such translations, adaptations, summaries, extracts, Derivative Works or Collective Works and (c) to license others to do any or all of the above. The foregoing rights may be exercised in all media and formats, whether now known or hereafter devised, and include the right to make such modifications as are technically necessary to exercise the rights in other media and formats. For any Video to which this Section 6 is applicable, JoVE and the Author hereby grant to the public all such rights in the Video as provided in, but subject to all limitations and requirements set forth in, the CRC License.

7. Government Employees. If the Author is a United States government employee and the Article was prepared in the course of his or her duties as a United States government employee, as indicated in **Item 2** above, and any of the licenses or grants granted by the Author hereunder exceed the scope of the 17 U.S.C. 403, then the rights granted hereunder shall be limited to the maximum rights permitted under such statute. In such case, all provisions contained herein that are not in conflict with such statute shall remain in full force and effect, and all provisions contained herein that do so conflict

shall be deemed to be amended so as to provide to JoVE the maximum rights permissible within such statute.

8. Likeness, Privacy, Personality. The Author hereby grants JoVE the right to use the Author's name, voice, likeness, picture, photograph, image, biography and performance in any way, commercial or otherwise, in connection with the Materials and the sale, promotion and distribution thereof. The Author hereby waives any and all rights he or she may have, relating to his or her appearance in the Video or otherwise relating to the Materials, under all applicable privacy, likeness, personality or similar laws.

9. Author Warranties. The Author represents and warrants that the Article is original, that it has not been published, that the copyright interest is owned by the Author (or, if more than one author is listed at the beginning of this Agreement, by such authors collectively) and has not been assigned, licensed, or otherwise transferred to any other party. The Author represents and warrants that the author(s) listed at the top of this Agreement are the only authors of the Materials. If more than one author is listed at the top of this Agreement and if any such author has not entered into a separate Article and Video License Agreement with JoVE relating to the Materials, the Author represents and warrants that the Author has been authorized by each of the other such authors to execute this Agreement on his or her behalf and to bind him or her with respect to the terms of this Agreement as if each of them had been a party hereto as an Author. The Author warrants that the use, reproduction, distribution, public or private performance or display, and/or modification of all or any portion of the Materials does not and will not violate, infringe and/or misappropriate the patent, trademark, intellectual property or other rights of any third party. The Author represents and warrants that it has and will continue to comply with all government, institutional and other regulations, including, without limitation all institutional, laboratory, hospital, ethical, human and animal treatment, privacy, and all other rules, regulations, laws, procedures or guidelines, applicable to the Materials, and that all research involving human and animal subjects has been approved by the Author's relevant institutional review board.

10. JoVE Discretion. If the Author requests the assistance of JoVE in producing the Video in the Author's facility, the Author shall ensure that the presence of JoVE employees, agents or independent contractors is in accordance with the relevant regulations of the Author's institution. If more than one author is listed at the beginning of this Agreement, JoVE may, in its sole discretion, elect not take any action with respect to the Article until such time as it has received complete, executed Article and Video License Agreements from each such author. JoVE reserves the right, in its absolute and sole discretion and without giving any reason therefore, to accept or decline any work submitted to JoVE. JoVE and its employees, agents and independent contractors shall have full, unfettered access to the facilities of the Author or of the Author's institution as necessary to make the Video, whether actually published or not. JoVE has sole discretion as to the method of making and publishing the Materials, including,

## ARTICLE AND VIDEO LICENSE AGREEMENT

without limitation, to all decisions regarding editing, lighting, filming, timing of publication, if any, length, quality, content and the like.

11. **Indemnification.** The Author agrees to indemnify JoVE and/or its successors and assigns from and against any and all claims, costs, and expenses, including attorney's fees, arising out of any breach of any warranty or other representations contained herein. The Author further agrees to indemnify and hold harmless JoVE from and against any and all claims, costs, and expenses, including attorney's fees, resulting from the breach by the Author of any representation or warranty contained herein or from allegations or instances of violation of intellectual property rights, damage to the Author's or the Author's institution's facilities, fraud, libel, defamation, research, equipment, experiments, property damage, personal injury, violations of institutional, laboratory, hospital, ethical, human and animal treatment, privacy or other rules, regulations, laws, procedures or guidelines, liabilities and other losses or damages related in any way to the submission of work to JoVE, making of videos by JoVE, or publication in JoVE or elsewhere by JoVE. The Author shall be responsible for, and shall hold JoVE harmless from, damages caused by lack of sterilization, lack of cleanliness or by contamination due to the making of a video by JoVE its employees, agents or independent contractors. All sterilization, cleanliness or decontamination procedures shall be solely the responsibility of the Author and shall be undertaken at the Author's expense. All indemnifications provided herein shall include JoVE's attorney's fees and costs related to said losses or

damages. Such indemnification and holding harmless shall include such losses or damages incurred by, or in connection with, acts or omissions of JoVE, its employees, agents or independent contractors.

12. **Fees.** To cover the cost incurred for publication, JoVE must receive payment before production and publication the Materials. Payment is due in 21 days of invoice. Should the Materials not be published due to an editorial or production decision, these funds will be returned to the Author. Withdrawal by the Author of any submitted Materials after final peer review approval will result in a US\$1,200 fee to cover pre-production expenses incurred by JoVE. If payment is not received by the completion of filming, production and publication of the Materials will be suspended until payment is received.

13. **Transfer, Governing Law.** This Agreement may be assigned by JoVE and shall inure to the benefits of any of JoVE's successors and assignees. This Agreement shall be governed and construed by the internal laws of the Commonwealth of Massachusetts without giving effect to any conflict of law provision thereunder. This Agreement may be executed in counterparts, each of which shall be deemed an original, but all of which together shall be deemed to be one and the same agreement. A signed copy of this Agreement delivered by facsimile, e-mail or other means of electronic transmission shall be deemed to have the same legal effect as delivery of an original signed copy of this Agreement.

A signed copy of this document must be sent with all new submissions. Only one Agreement required per submission.

### AUTHOR:

Name:

Laura Lee

Department:

Cell and Developmental Biology

Institution:

Vanderbilt University Medical Center

Article Title:

Cytological Analysis of Spermatogenesis: Live and Fixed Preparations of Drosophila Testes

Signature:

*Laura Lee*

Date:

04/09/13

Please submit a signed and dated copy of this license by one of the following three methods:

- 1) Upload a scanned copy as a PDF to the JoVE submission site upon manuscript submission (preferred);
- 2) Fax the document to +1.866.381.2236; or
- 3) Mail the document to JoVE / Attn: JoVE Editorial / 17 Sellers St / Cambridge, MA 02139

For questions, please email [editorial@jove.com](mailto:editorial@jove.com) or call +1.617.945.9051.

MS # (internal use):

We thank the editor and all four reviewers for their helpful comments concerning the manuscript we submitted to JoVE. We have incorporated these suggestions into a revised version (please see point-by-point responses to comments below). By doing so, we think that we have significantly improved the quality of the manuscript text and the accompanying figures.

**Editorial comments:**

*1) Please download the most recent version of the Microsoft word document from the "file inventory" to use for any subsequent changes.*

-We followed this instruction.

*2) Please re-write step 2.4 of your protocol section in imperative tense, as if you are telling someone how to do the technique (i.e. "Do this", "Measure that" etc.)*

-We have fixed this step in the revised version.

*3) JoVE is unable to publish manuscripts containing commercial sounding language, including trademark or registered trademark symbols (TM/R) and the mention of company brand names before an instrument or reagent. Please remove all commercial sounding language from your manuscript. All commercial products should be sufficiently referenced in the table of materials/reagents. Examples of commercial sounding language in your manuscript are "Kimwipe" in step 3.15 and "ProLong Gold Antifade Reagent" in step 3.17 of the protocol.*

-Commercial product names have been moved from the manuscript to the materials/reagents table in the revised version.

*4) Please revise the manuscript text to minimize the use of any pronouns (i.e. "we", "you", "our" etc.).*

-Personal pronouns have been removed from the revised manuscript.

*5) If you are re-using figures from a previous publication, you must obtain explicit permission to re-use the figure from the previous publisher (this can be in the form of a letter from an editor or a link to the editorial policies that allows you to re-publish the figure) and you must cite the figure appropriately in the figure legend, i.e. "This figure has been modified from [citation]."*

-In the original Figure 3B, the field of several germline cells included a wild-type round spermatid that had been cropped and presented as a control cell in a previously published manuscript from our lab. To avoid the need to request permission from the previous publisher, we have revised Figure 3B such that a different field of germline cells that does not include the previously published spermatid is now displayed. All of the other figures were generated specifically for inclusion in the current manuscript.

## **Reviewers' comments:**

### **Reviewer #1:**

#### *Manuscript Summary:*

*This manuscript is useful and well-done in places and incomplete/inaccurate in others. A fair amount of revision is necessary to make it suitable for publication. Specific comments are listed below, some in the "major concerns" section and some in the "minor concerns" section.*

#### *Major Concerns:*

*One main concern is that comprehensive methods publications on these techniques have already been published and are not cited. A primary reference is Bonaccorsi, S., M.G. Giansanti, G. Cenci, and M. Gatti. 2000. Cytological Analysis of Spermatocyte Growth and Male Meiosis in *Drosophila melanogaster*. Chapter 5 in *Drosophila Protocols*, Eds. W. Sullivan, M. Ashburner, R.S. Hawley. Cold Spring Harbor Laboratory Press, Cold Spring Harbor, NY.*

*Subsequent adaptations of the protocols in the above book chapter have been published in the journal Cold Spring Harbor Protocols, with details at the following PubMed entries for protocols relevant to this JoVE submission:*

*<http://www.ncbi.nlm.nih.gov/pubmed/21363941> Live testis preparations*

*<http://www.ncbi.nlm.nih.gov/pubmed/22854561> Formaldehyde fixation*

*<http://www.ncbi.nlm.nih.gov/pubmed/22194254> Paraformaldehyde fixation*

*<http://www.ncbi.nlm.nih.gov/pubmed/21969616> Methanol-acetone fixation*

*<http://www.ncbi.nlm.nih.gov/pubmed/21969617> Immunostaining*

*-We include these references in the revised manuscript.*

*Only if a truly useful set of videos are produced to accompany this manuscript will this project represent something novel.*

*[ **Editorial comment:** The above comment suggests that the content of your manuscript is not novel, however JoVE is a methods journal and we are not concerned with novelty of results as much as scientific rigor of the protocol. You may disregard the above comment, or you may chose to address it if you feel it will significantly improve your manuscript. However, please attempt to include some of the above references. ]*

*- Protocols that describe in words how to carry out imaging of the *Drosophila* testes are available in the scientific literature, and a visual protocol for testes dissection (with no description of further processing of the tissue for microscopic analysis) was previously published in JoVE by another lab. While these protocols are helpful, a visual presentation of methods for preparing *Drosophila* testes for live cell and fixed cell imaging is currently lacking. We therefore believe that our manuscript is ideal for publication in the unique multimedia format offered by JoVE and that we can provide a very useful and unique resource for labs that are inexperienced in working with this model system.*

#### *Additional major concerns:*

*p. 6 line 111 (also p.9 line 233): It is not accurate to say that 2-5 day old males are ideal*



*for visualizing spermatids. In fact, very young males (0-2 days old) are ideal for visualizing meiosis and early post-meiotic spermatids of the onion stage and early elongation stages. Only if the final mature sperm are the target is it useful to dissect older males.*

-These two sentences have been modified as follows in the revised version:

“Young males (0-2 days old) are ideal for examining cells throughout the earlier stages of spermatogenesis (e.g. spermatogonia, spermatocytes, and early post-meiotic spermatids), whereas slightly older males (2-5 days old) are ideal for examining cells in the final stages of spermatogenesis (in particular, mature sperm).”

“Older males are preferable if the goal is to visualize mature sperm.”

*It would more complete to add here (in addition to in the discussion) a mention of dissecting larval testes and/or pharate adult testes for the purposes of looking at more cells at extremely early stages.*

-Steps 1.7 and 1.8 (with brief descriptions of methods including references for isolating testes from pharate males and male larvae, respectively) have been added to the protocol section in the revised version. The third paragraph of the discussion section has been modified in the revised version to better fit with the inclusion of methods for isolating pharate and larval testes in the protocol section.

*p.6 line 141: Need much more description with regard to "nicking," as a small nick will cause a failed preparation when cells lyse as they squeeze through a too-small opening.*

-We have used the term “tear open” instead of “nick” in the revised manuscript. The Bonaccorsi protocols describe this step in the same way without additional details: “Tear open the adult testes using either very fine forceps or tungsten needles.” We think that the video demonstration will be very useful for conveying to the viewer how to perform this step.

*p. 7 line 149. Emphasize that all "squashing" is purely from the weight of the cover slip, not from any pressure applied by the researcher.*

-Step 2.3 has been modified in the revised version to make this point:

“2.3) Gently place a glass microscope slide over the cover slip to squash the testes; do not apply pressure manually as the weight of the cover slip alone is sufficient to obtain a properly squashed sample.”

*p.7 line 162: This won't work well unless the slides were treated to make them sticky (e.g. polylysine) and the cover slips treated to make them non-sticky (e.g. siliconized). This necessity isn't mentioned here or in the list of reagents.*

-We have found these treatments to be unnecessary, and we do not routinely include them in our protocol. In several of the Bonaccorsi protocols listed above (for example, <http://www.ncbi.nlm.nih.gov/pubmed/21363941> Live testis preparations; <http://www.ncbi.nlm.nih.gov/pubmed/22854561> Formaldehyde fixation; <http://www.ncbi.nlm.nih.gov/pubmed/21969616> Methanol-acetone fixation), nonsiliconized cover slips were actually specified, and no indication was given that the microscope slides were pre-treated in any of the referenced protocols. Nonetheless, in case some researchers find these treatments to be useful for preparing the testes

samples for microscopy, we have included them as optional methods in the revised protocol as follows, and product information has been added to the table.

(End of Step 2.1):

“Optional: Use siliconized cover slips to minimize adherence of the tissue to the cover slip later in Step 3.2.”

(End of Step 2.3):

“Optional: Use poly-L-lysine coated microscope slides to promote adherence of the tissue to the slide later in Step 3.2.”

*pages 9-10: Parts of the Representative Results section (particularly the first two paragraphs) seem very redundant with other sections.*

**[ Editorial comment:** According to the JoVE format, the Representative Results section should include a discussion of the results of all figures, so you may disregard the above comment. ]

*p. 13 line 369: This paragraph doesn't seem to fit the focus of the article; while it's useful information in some sense, it seems a bit disjointed and out of place.*

-To round out the discussion, we felt it was important to briefly mention that the *Drosophila* testes system can be used for biochemical analysis. A minimal amount of space has been used to make this point because we refer the reader to published literature in which this approach has been successfully taken. In response to a comment from Reviewer #3, we have included an additional reference (Belloni et al., 2012) when providing examples of co-immunoprecipitation experiments using *Drosophila* testes extracts.

*Figure 1 and associated text need to 1) indicate/highlight the fact that cytokinesis is incomplete; 2) describe/indicate what the features of the diagrams are indicated (distinguishing nuclei from mitochondria, for example, and 3) indicate with better accuracy that mature sperm heads are not oval shaped. A full Figure legend is truly needed. The text does not describe all the features.*

-We have revised Figure 1 so that it better depicts the connections between germ cells and the needle-shaped (as opposed to oval-shaped) nuclei of mature sperm heads. We now include a full legend for Figure 1 in the revised manuscript:

**“Figure 1. Schematic of germline cell divisions in *Drosophila* males.** Each stem cell division produces a gonial cell that undergoes four rounds of mitotic divisions with incomplete cytokinesis to produce a 16-cell cyst of primary spermatocytes. Each primary spermatocyte undergoes a prolonged growth phase prior to undergoing the two meiotic divisions, again with incomplete cytokinesis, to form a 32-cell cyst of interconnected secondary spermatocytes followed by a 64-cell cyst of interconnected round spermatids. Round spermatids are characterized by the presence of a phase-light nucleus and a phase-dark mitochondrial aggregate (the Nebenkern) of similar sizes. The round spermatids undergo elongation and individualization to form the mature sperm. Mature sperm heads can be identified by their needle-shaped nuclei. Nuclei are shown in blue; Nebenkerne (mitochondrial aggregates) in black; cytoplasm in tan.”

*Figure 2: It is confusing to use the letters A and B for the panels as well as for the*



*places to "nick" the testis. Use different designations for the latter.*

-We use numbers rather than letters in the revised version to refer to the various positions at which to tear open the testes.

*Figure 2 (also p. 9 line 239): It is inaccurate to suggest that "Level B" is the place to "nick" the testis to get late stage cells. There will still be mostly primary spermatocytes at that location. The location to open up to get more mature cells is closer to where the curvature starts. This will be a key thing to get right in any video!!*

-We have modified in the revised version our description of the positions at which to tear open the testes as follows: "To enrich for spermatogonia and spermatocytes, tear open the testis adjacent to its apical tip (level 1, Figure 2B). To enrich for spermatocytes and spermatids, tear open the testis at a position slightly basal to level 1 (level 2, Figure 2B). To enrich for more mature germline cells, tear open the testis closer to where the curvature begins (level 3, Figure 2B)." We agree that the video demonstration will be very useful for conveying to the viewer how to perform this step.

*Figure 2: It is inaccurate to suggest that "nicking" the testes is sufficient. The testes must be truly peeled open. Otherwise cells lyse as they squeeze through a small "nicked" opening. This will be another key thing to get right in a video!!*

-We regret having used the term "nick" in the original manuscript to refer to the process of tearing open the testes. It was not an accurate description. We have expunged the term "nick" from the revised manuscript and have replaced it with "tear open." Again, we agree that the video demonstration will be very useful for conveying to the viewer how to perform this step.

*Figure 3 legend p. 17 line 496 (also p. 12 lines 321-322): "Occasionally" is inaccurate - it is quite typical to see such fusions since cytokinesis is incomplete to begin with, and the ring canals routinely burst open under the cover slip.*

-We have changed the word "occasionally" to "frequently" in the revised version.

*Need more explanation on incomplete cytokinesis in the text for this all to make sense.*

-We have included a full legend for Figure 1 in the revised manuscript (see note above) that should provide a better explanation of the incomplete cytokinesis that occurs during both the gonial and meiotic divisions. We have also added this sentence to the introduction of the revised manuscript:

"During both the mitotic and meiotic divisions of the male germ cells, cytokinesis occurs incompletely such that the daughter cells remain connected by cytoplasmic bridges known as ring canals (Figure 1)."

*Minor Concerns:*

*p.4 line 61: "a second round of DNA division in meiosis" is not the only event that is needed for the production of 64-cell cysts.*

-In addition to improving our explanation of incomplete cytokinesis in the revised manuscript (see note above), we have modified this sentence as follows:

"Progression through meiosis I and meiosis II results in the formation of 32-cell cysts of secondary spermatocytes and 64-cell cysts of haploid spermatids, respectively."

*p. 5 line 96: Antibodies and dyes don't actually penetrate the outer layers of the testis (composed of a muscular sheath) very well, and that is one reason we open up the testes to let the cells spill out. Be more precise with language concerning what the antibodies etc are penetrating in these protocols.*

-We have changed this sentence in the revised version to include the following:  
“antibodies and dyes can easily penetrate cells following their dispersal from the testes.”

*p. 6 line 117: PBS is not the most commonly used dissection buffer; it's worth mentioning that there are others. The Bonaccorsi publication gives recipes for four different buffers.*

-We include the following sentence in the revised manuscript (with reference to the 2000 Bonaccorsi publication):

“Other aqueous solutions have been successfully used for testes dissection.”

*p.7 line 154: Could add here the application of visualizing fluorescence of endogenous proteins (e.g. a GFP-tagged protein encoded by a transgene in the dissected fly), as mentioned later in the discussion. In the discussion (e.g. p.12 line 343), it should be emphasized that this visualization can be done in live preparations.*

-We have made these changes in the revised version as follows:

(From protocol section)

“2.4) Use preparation immediately (ideally within 15 min of preparation) to observe live cells by phase-contrast microscopy; for transgenic flies with expression of fluorescently tagged proteins in the testes, live cells can be examined by fluorescence microscopy at this step. Alternatively, proceed with fixation and antibody staining (Step 3).”

(From discussion section)

“If antibodies against a protein of interest are unavailable, transgenic *Drosophila* lines expressing a fluorescently tagged (e.g. mCherry or GFP) version of the protein can be generated as an alternative approach. The subcellular localization of the protein can then be determined by using a microscope to view the GFP fluorescence in live or fixed preparations of tissue; alternatively, anti-GFP antibodies can be used to detect the fusion protein in fixed samples. In Figure 4, microtubules in a fixed testes preparation were visualized via the intrinsic fluorescence of GFP-tagged beta1-tubulin (expressed from a transgene under control of a globally expressed ubiquitin promoter).”

*Figure 2: The dark field images are hard to make out. Would other optical conditions be more suitable?*

-We have taken the highest-quality images that we can with our microscope. We have brightened the image in the revised figure in an effort to make it easier for the reader to discern the dissected specimens against the dark background.

*Figure 4 legend p. 17 line 508: What evidence is there that that is a primary and not a secondary spermatocyte undergoing division?*

-We can usually tell the difference with some degree of confidence because primary spermatocytes are much larger than secondary spermatocytes. When both primary and secondary spermatocytes are present within the field of view, it is easier to distinguish

between them based on their relative sizes. Because Reviewer #1 has raised this concern, however, combined with the fact that only one spermatocyte is present in the field of view in Figure 4D, we have changed “dividing primary spermatocyte” to “dividing spermatocyte in the revised version.

*p.22 in list of reagents: "forceps" is misspelled.*  
-We have fixed this error in the revised version.

*Additional Comments to Authors:*

*Other than the issues noted, the manuscript is generally clear and accurate, though not comprehensive in terms of possible variations.*

**Reviewer #2:**

*This manuscript presents the method for isolating and preparing Drosophila testes samples for imaging by phase-contrast and fluorescence microscopy. This is well designed and well written manuscript. There are some quick fix and staining methods are provided, however, most of the methods presented here already known, except few.*

*Some of these methods are not cited such as:*

*Cold Spring Harb Protoc. 2012 Aug 1;2012(8).*

*Anal Biochem. 2013 May 1;436(1):55-64*

*Methods Mol Biol. 2008;450:45-59.*

*Cold Spring Harb Protoc. 2012 Jan 1;2012(1):105-6*

*Cold Spring Harb Protoc. 2011 Oct 1;2011(10):1273-5*

-We include these references in the revised manuscript.

*Blocking the tissue before primary antibodies incubation is not given in method.*

-We do not routinely include a blocking step when performing our immunostaining experiments, but it may be very important for some antibodies. The revised manuscript includes a description of an optional blocking step (new Step 3.8) and modification of the primary antibody incubation and wash conditions if blocking was performed (Step 3.10):

“3.8) Blocking step (optional): Immerse slides in PBS plus 1% BSA for 45 min at room temperature.”

“3.10) Add 30-40 µl of primary antibody (diluted in PBS-T, 1:400 to 1:50, depending on antibody) to tissue within the circle. If blocking was performed, dilute primary antibody in PBS-T plus 1% BSA.”

“3.11) Wash slides in PBS for 5 min at room temperature three times. If blocking was performed, wash twice in PBS-T and once in PBS (5 min at room temperature each)”

*Details of source of the antibodies for primary (GFP, tubulins) and secondary antibodies are not provided.*

- Information about the anti-gamma tubulin antibodies and Cy3-conjugated secondary antibodies used in Figure 4 has been added to the reagents/equipment table in the revised version. We did not use anti-GFP antibodies; instead, we visualized the fluorescence of GFP-tagged beta-tubulin expressed from a transgene.

**Reviewer #3:**

*This manuscript describes protocols for the visualization of cells in Drosophila testes. In addition it provides useful tips on how to enrich preparations for specific stages of spermatogenesis*

*Although protocols for live analysis and immunostaining of Drosophila testes have been already published, they are focused on male meiotic divisions.*

*Major Concerns: My major concern is the absence of any description of how to dissect larvae. A large number of mutants die at the third instar larval stage. Thus adult testes cannot be performed. A small section describing how to dissect larvae can be important.*

-Please see response (above) to similar point raised by Reviewer #1.

*Minor Concerns: I found a bit confusing the protocol describing fixation and antibody staining between point 3.8 and 3.9. After using a hydrophobic barrier PAP pen to draw a circle around the preparation it is not clear whether the preparations are left to dry or should be maintained wet when adding the antibody. In my experience the preparations should be kept wet.*

-We agree that the preparations should be kept wet. To make this point more clearly, we have modified Step 3.8 in the revised version as follows:

“3.8) Use a hydrophobic barrier PAP pen to draw a circle on the slide around the squashed tissue (easily visible by eye) in order to confine the antibody solutions (added in steps 3.9 and 3.11). The tissue should be kept moist at all times while performing immunostaining.”

*In the list of reagents the authors should also give the recipe for PBS. There are several PBS buffers available.*

- We include a description of our “homemade” PBS (130 mM NaCl, 7 mM Na<sub>2</sub>HPO<sub>4</sub>, and 3 mM NaH<sub>2</sub>PO<sub>4</sub>) in Step 1.4 of the Protocol section in the revised manuscript.

*IN the same section please change Forceps to Forceps.*

-We have fixed this error in the revised version.

*The paper of Belloni et al., 2012: Mutations in Cog7 affect Golgi structure, meiotic cytokinesis and sperm development during Drosophila spermatogenesis.*

*J Cell Sci. 2012 Nov 15;125(Pt 22):5441-52. doi: 10.1242/jcs.108878. Epub 2012 Sep 3. should be also cited when referring to Co-IP using Drosophila testes.*

-We have cited this reference in the revised version when referring to co-immunoprecipitation experiments using *Drosophila* testes.

*Additional Comments to Authors:*

N/A

**Reviewer #4:**

*Manuscript Summary:*

N/A

*Major Concerns:*

None

*Minor Concerns:*

*line 57: The term "hub" should be reserved for the niche cells that support the stem cells.*

-We have changed "hub of germline stem cells" to "population of germline stem cells" in the revised version.

*line 60: Please describe the length of time that spermatocytes remain in G2 and the increase in cell volume.*

-We have added information to this sentence in the revised version as follows:

"After premeiotic S phase, primary spermatocytes enter G2, a prolonged growth period of ~90 hours during which cellular volume increases ~25-fold<sup>1</sup>."

*line 77: Please describe the "specialized organs" as spermathecae.*

-We have made this change in the revised version.

*line 96: The testis is not always easily penetrated by antibodies and can require additional permeabilization (e.g. increased detergent)*

-Reviewer #1 also noticed a problem with our wording in this sentence (see response above). We have made it clearer in the revised version that we are referring in our methods to the staining of cells dispersed from the testes as opposed to staining of the intact testes.

*line 130: Most transgenic strains have transparent testes as the mini-white gene found in P-elements does not result in pigment accumulation in testes.*

We have added the following sentence to the first paragraph of the Discussion section: "Most transgenic strains, which are typically in a *white* background, also have white testes because the mini-*white* gene found in *P*-elements does not promote pigment accumulation in the testes."

*Section 2.2: The authors state that germline stem cells can egress from the testis - Do GSCs really detach from the hub?*

-We were incorrect to suggest that germline stem cells can egress from the testis. To fix this error, we have removed "germline stem cells" from this sentence in the revised version.

*Should a "2.5" be added - along the lines of "Gently wick liquid from under the coverslip using a Kimwipe to allow flattening of the preparation until the germ cells are clearly in focus"?*

-We have added the following Step 2.5 to the revised manuscript:

“2.5) Gently wick any excess liquid from under the coverslip using a cleaning wipe to allow flattening of the preparation until the germ cells are clearly in focus.”

*line 228: I would not describe testes as "thick" but at their maximal diameter.*

-We have changed “thick” to “at their maximal diameter” in the revised version.

*Figure 1: it would be useful to show the connections between germ cells.*

-We have revised Figure 1 so that it depicts the connections between germ cells.

*Figure 2: It is not optimal to use red arrows on different panels to refer to different cell types.*

-We have revised Figure 2 so that the color scheme used for the arrows and arrowheads will be less confusing for the reader.

*Reagent list: Forceps is not spelled correctly.*

-We have fixed this error in the revised version.

*Additional Comments to Authors:*

*Did the authors not find any need to siliconize coverslips or treat slides to allow tissue to attach to the slide and not the coverslip*

-Please see response (above) to similar point raised by Reviewer #1.