

Journal of Visualized Experiments

Tissue Engineering of a human 3D in vitro tumor test system

--Manuscript Draft--

Manuscript Number:	JoVE50460R3
Full Title:	Tissue Engineering of a human 3D in vitro tumor test system
Article Type:	Methods Article - JoVE Produced Video
Corresponding Author:	Jenny Reboredo, Dipl.-Ing. University clinic Würzburg Würzburg, Bayern GERMANY
Corresponding Author Secondary Information:	
Corresponding Author's Institution:	University clinic Würzburg
Corresponding Author's Secondary Institution:	
First Author:	Corinna Moll, Dipl.-Biol.
First Author Secondary Information:	
Order of Authors Secondary Information:	
Abstract:	<p>Cancer is one of the leading causes of death worldwide. Current therapeutic strategies are predominantly developed in 2D culture systems, which inadequately reflect physiological conditions in vivo. Biological 3D matrices provide cells an environment in which cells can self-organize, allowing the study of tissue organization and cell differentiation. Such scaffolds can be seeded with a mixture of different cell types to study direct 3D cell-cell-interactions. To mimic the 3D complexity of cancer tumors, our group has developed a 3D in vitro tumor test system.</p> <p>Our 3D tissue test system models the in vivo situation of malignant peripheral nerve sheath tumors (MPNSTs), which we established with our decellularized porcine jejunal segment derived biological vascularized scaffold (BioVaSc). In our model, we reseeded a modified BioVaSc matrix with primary fibroblasts, microvascular endothelial cells (mvECs) and the S462 tumor cell line. For static culture, the vascular structure of the BioVaSc is removed and the remaining scaffold is cut open on one side (Small Intestinal Submucosa SIS-Muc). The resulting matrix is then fixed between two metal rings (cell crowns).</p> <p>Another option is to culture the cell-seeded SIS-Muc in a flow bioreactor system that exposes the cells to shear stress. Here, the bioreactor is connected to a peristaltic pump in a self-constructed incubator. A computer regulates the arterial oxygen and nutrient supply via parameters such as blood pressure, temperature, and flow rate. This setup allows for a dynamic culture with either pressure-regulated pulsatile or constant flow.</p> <p>In this study, we could successfully establish both a static and dynamic 3D culture system for MPNSTs. The ability to model cancer tumors in a more natural 3D environment will enable the discovery, testing and validation of future pharmaceuticals in a human-like model.</p>
Corresponding Author E-Mail:	jenny.reboredo@uni-wuerzburg.de
Order of Authors:	Corinna Moll, Dipl.-Biol.
	Jenny Reboredo, Dipl.-Ing.
	Thomas Schwarz, Dipl.-Ing.
	Antje Appelt, Dipl.-Ing.
	Sebastian Schürlein, M.Sc.

	Heike Walles, Prof. Dr. rer. nat.
	Sarah Nietzer, Dr. rer. nat.
Author Comments:	

Cover letter

Tissue Engineering of a human 3D in vitro tumor test system

Authors: Corinna Moll, Jenny Reboredo, Thomas Schwarz, Antje Appelt, Sebastian Schürlein, Heike Walles, Sarah Nietzer

The manuscript submitted introduces a novel three-dimensional (3D) *in-vitro* system for tumor models. The authors describe the multi-step set-up of such 3D tissue models, including the decellularization of porcine tissue as scaffold, the isolation of different tumor-associated primary cell types and bioreactor systems that allow static as well as dynamic culture conditions. The reasons why we think that our paper is a very good topic for the JOVE format is that we use very complex bioreactors in our work. So it would be much more catchy to see our bioreactors in a movie than to read a description of its construction plan and handling. Additionally, it would be very informative, to see the development, preparation as well as analysis of our 3D tumor test systems shown by a video. These short-takes of all of the steps during the tumor test tissue generation would illustrate our work optimally. We think that the new field of tissue engineering in developing test systems would be very suitable for being portrayed in your journal. Visualizing the individual experimental steps will render the topic accessible for scientists from different fields of study.

Human in-vitro tumor models will play a major role in future personalized therapeutic strategies and will have a significant impact on tumor drug research by providing a controlled environment mimicking human conditions. Additionally, *in-vitro* tumor models will help to reduce the need for animal testing.

The authors Jenny Reboredo and Thomas Schwarz worked as engineers on the development and construction of the bioreactors. The authors Antje Appelt and Sebastian Schürlein established the cell isolation and culture protocols. Corinna Moll applied the system for the establishment of a human nerve sheath tumor model under the supervision of Sarah Nietzer. Jenny Reboredo and Corinna Moll contributed equally to the work; Jenny Reboredo is listed as corresponding author.

Tissue Engineering of a human 3D *in vitro* tumor test system

Authors:

Corinna Moll, Jenny Reboredo, Thomas Schwarz, Antje Appelt, Sebastian Schürlein, Heike Walles, Sarah Nietzer

Authors: institution(s)/affiliation(s) for each author:

Corinna Moll

Chair of Tissue Engineering and Regenerative Medicine
University Clinic Würzburg

corinna.moll@uni-wuerzburg.de

Jenny Reboredo

Chair of Tissue Engineering and Regenerative Medicine
University Clinic Würzburg

jenny.reboredo@uni-wuerzburg.de

Thomas Schwarz

Chair of Tissue Engineering and Regenerative Medicine
University Clinic Würzburg

thomas.schwarz@uni-wuerzburg.de

Antje Appelt

Chair of Tissue Engineering and Regenerative Medicine
University Clinic Würzburg

antje.appelt@uni-wuerzburg.de

Sebastian Schürlein

Chair of Tissue Engineering and Regenerative Medicine
University Clinic Würzburg

sebastian.schuerlein@uni-wuerzburg.de

Heike Walles

Chair of Tissue Engineering and Regenerative Medicine
University Clinic Würzburg

heike.walles@uni-wuerzburg.de

Sarah Nietzer

Chair of Tissue Engineering and Regenerative Medicine
University Clinic Würzburg

Sarah.nietzer@uni-wuerzburg.de

Corresponding authors:

Corinna Moll, Jenny Reboredo (contributed equally to the work)

Keywords:

Decellularization, BioVaSc, primary cell isolation, tumor test system, dynamic culture conditions, bioreactor, 3D *in vitro* models

Short Abstract:

Methods to create human 3D tumor tissues as test systems are described. These technologies

are based on a decellularized Biological Vascularized Scaffold (BioVaSc), primary human cells and a tumor cell line, which can be cultured under static as well as under dynamic conditions in a flow bioreactor.

Long Abstract:

Cancer is one of the leading causes of death worldwide. Current therapeutic strategies are predominantly developed in 2D culture systems, which inadequately reflect physiological conditions *in vivo*. Biological 3D matrices provide cells an environment in which cells can self-organize, allowing the study of tissue organization and cell differentiation. Such scaffolds can be seeded with a mixture of different cell types to study direct 3D cell-cell-interactions. To mimic the 3D complexity of cancer tumors, our group has developed a 3D *in vitro* tumor test system.

Our 3D tissue test system models the *in vivo* situation of malignant peripheral nerve sheath tumors (MPNSTs), which we established with our decellularized porcine jejunal segment derived biological vascularized scaffold (BioVaSc). In our model, we reseeded a modified BioVaSc matrix with primary fibroblasts, microvascular endothelial cells (mvECs) and the S462 tumor cell line. For static culture, the vascular structure of the BioVaSc is removed and the remaining scaffold is cut open on one side (Small Intestinal Submucosa SIS-Muc). The resulting matrix is then fixed between two metal rings (cell crowns).

Another option is to culture the cell-seeded SIS-Muc in a flow bioreactor system that exposes the cells to shear stress. Here, the bioreactor is connected to a peristaltic pump in a self-constructed incubator. A computer regulates the arterial oxygen and nutrient supply via parameters such as blood pressure, temperature, and flow rate. This setup allows for a dynamic culture with either pressure-regulated pulsatile or constant flow.

In this study, we could successfully establish both a static and dynamic 3D culture system for MPNSTs. The ability to model cancer tumors in a more natural 3D environment will enable the discovery, testing and validation of future pharmaceuticals in a human-like model.

Introduction:

New pharmaceuticals must be validated in regard to their quality, safety and efficacy before market authorization. To date, animal experiments are the standard method for drug testing and validation. However, due to species-specific differences, animal experiments often do not comprehensively evaluate the effect of the compounds in humans¹. For this reason, it is important to generate human tissue models that can be used for *in vitro* tests of new drugs and substances.

One of the focuses of our group is the creation of *in vitro* test models with our biological vascularized scaffold (BioVaSc)^{2,3}. The BioVaSc can be used as a static or dynamic 3D matrix system. For static culture, the decellularized porcine jejunal segment (Small Intestinal Submucosa SIS-Muc) is placed in a metal insert for cell reseeded. Various cells, such as cancer and endothelial cells can be cultured on the scaffold.

For dynamic culture, the BioVaSc is attached to a bioreactor system that applies flow throughout the vasculature or across the surface of the scaffold. Current bioreactors implement biological, mechanical or electrical stimuli that act upon the differentiation or proliferation of cells⁴. For bioreactors in the field of Tissue Engineering, the basic concept is to simulate the conditions in the human body. Wherein, cells are provided a natural environment in which they can interact with each other and their surrounding extracellular matrix. For the production of *in vitro* test systems or transplants, the ability to mimic the natural environment of cells with an appropriate carrier structure and bioreactor system is critical⁵. Therefore, more complex and technically demanding devices must be developed in order to fulfill these tasks⁶.

For the establishment of our tumor model, we used a scaffold derived from a porcine jejunal segment with preserved tubular structures, which include the feeding artery, vein and the connecting capillary bed. All porcine cells were removed by chemical, mechanical and enzymatic decellularization, and the scaffold was gamma-sterilized. The restored tubular vascular structures was subsequently reseeded with human microvascular endothelial cells using a recirculation perfusion bioreactor⁷, which mimics the biomechanical and/or biochemical parameters such as pH, temperature, pressure, nutrient supply and waste removal⁶. The re-endothelialization of the tubular structures creates a human blood vessel equivalent within the collagenous scaffold^{3,7}. In the following step, the surface of the former lumen (mucosa) was seeded with primary human cells to establish co-culture^{3,7,8}.

Protocol:

1.) Decellularization of the BioVaSc

1.1) Rinse the vascular system of the porcine jejunal segment via cannulated arterial access and the intestinal lumen with PBS⁻. Repeat until it is completely clean.

1.2) Prepare a 200 mm diameter glass tank with 4 adapters and connect them via silicon tubes to the peristaltic pump (Ismatec). The pressure controlling unit can be monitored via a pressure sensor that is connected to a sterile disposable dome (see figure 1).

1.3) Fill reservoir bottles with decellularization (DZ) solution, check the tubing system for possible air bubbles and pump 500 ml DZ solution into the red arterial access (figure 1B) of the vascular system.

1.4) Connect the intestinal lumen with cable ties to the glass connectors for luminal flow. Interrupt the pumping process every 15 minutes shortly to manually press out the entire intestinal lumen.

1.5) During the decellularization process, the pressure of the buffer solution should be between 80 - 100 mm Hg, modeled after the natural blood pressure.

1.6) Wash the BioVaSc with PBS⁻ until it is free of cell remnants ("completely white").

1.7) Fill the BioVaSc completely with DZ solution and incubate it submers in DZ solution over night at 4°C on rocking shaker.

1.8) Repeat step 1.6.

1.9) Place the BioVaSc in DNase solution and incubate over night at 4°C on rocking shaker.

1.10) Remove DNase solution and rinse with washing buffer.

1.11) γ -sterilization with 25 kGy

2.) The different cell types

2.1) Isolation of primary human dermal microvascular endothelial cells (mvECs) and fibroblasts

2.1.1) Cut skin biopsy (preferably preputium) into strips of 2-3 mm width with scalpel and rinse them 3x with PBS⁻ solution.

2.1.2) Cover the tissue with dispase solution and incubate it for 16 to 18 h at 4°C.

2.1.3) Separate epidermis from dermis with 2 tweezers and transfer both separately into petri dishes filled with PBS⁺.

2.1.4) Rinse dermis strips 1x with Versene.

2.1.5) Add 10 ml Trypsin/EDTA solution to the dermis strips and incubate it in the incubator for 40 min.

2.1.6) Stop the enzyme reaction immediately with 1% FCS.

2.1.7) Transfer skin strips to a petri dish filled with Vasculife and scratch out each strip with the scalpel 8x each side, adding a little pressure.

2.1.8) Transfer the produced cell suspension via a cell strainer to a centrifuge tube and rinse cell strainer 3x with Vasculife.

2.1.9) Centrifuge the tube at 1200 U/min for 5 min and resuspend the cell pellet with Vasculife.

2.1.10) To isolate the fibroblasts, chop dermis strips into little pieces using the scalpel.

2.1.11) Add 10 ml of collagenase solution to dermis pieces.

2.1.12) Incubate it for 45 min in the incubator, then centrifuge it and carefully remove supernatant.

2.1.13) Wash pellet 1x with DMEM + 10% FCS + % PenStrep, centrifuge it and carefully remove supernatant.

2.1.14) Resuspend the pellet in culture medium and transfer it to a T75 culture flask to allow cells to grow out of the tissue.

2.2) Tumor cell line S462

The tumor cell line S462 (kindly provided by Dr. Nikola Holtkamp, Charité University Medicine Berlin) was generated from a malignant peripheral nerve sheath tumor of a female patient with the hereditary tumor predisposition syndrome neurofibromatosis type 1⁹.

S462 are cultured in DMEM supplemented with 10% FCS. Medium has to be changed every 2-3 days. Once a week the cells have to be split.

3.) Tumor test system: static culture conditions compared with dynamic culture in bioreactor systems

3.1) Cut the tubular SIS-Muc open on one side and fix it between two metal rings (cell crowns, 10 mm diameter, self constructed). Cover the SIS-Muc in cell culture medium overnight.

3.2) Seed isolated cells in defined cell numbers (see below) on one or both sides of the SIS (mono- or co-culture set-up).

3.2.1) Seed 8,000 cells/cm² of primary mvECs in a total volume of 100 µl onto the basolateral surface of the SIS (former serosa). 3 hours later fill the well with medium to ensure a submersed culture.

3.2.2) Allow endothelial cells to adhere for 3 days. Flip the static culture system by 180° and transfer it to a 12-well plate.

3.2.3) Seed a mixture of primary dermal fibroblasts (8,000 cells/cm²) and tumor cells (15,000 cells/cm²) within a total volume of 500 µl on the apical surface of the SIS (the side of the former lumen).

3.2.4) Allow cells to adhere for 3 hours and fill the well with medium (submersed culture, medium: 50% Vasculife + 50% DMEM supplemented with 10% FCS).

3.2.5) The tumor test system is cultured under static conditions at 37°C, 5% CO₂ in the incubator for additional 14 days. Change culture medium every 2 - 3 days.

3.8) For the dynamic culture, fix the SIS-Muc between two metal rings and seed primary mvECs as described in 3.2.1. After 3 days remove the SIS-Muc from the metal rings and insert the

membrane into the flow reactor (see figure 2C/D). Apply the primary dermal fibroblasts and tumor cells with a syringe and cannula onto the matrix in the bioreactor, and allow the cells to adhere for 3 hours before filling the bioreactor system with culture medium.

3.9) On the following day dynamic culture conditions with constant medium flow (3.8 ml/ min, 37°C and 5% CO₂) can be initiated. The dynamic culture is maintained for 14 days, culture medium is changed after 7 days,

3.10) The dynamic test setup is cultured in a self-constructed incubator that provides media flow through a pump and the necessary temperature and CO₂ content.

4.) Characterization methods for analysis

4.1 Fixing and paraffin-embedding of the seeded collagenous matrix

4.1.1 For (immuno-) histological characterizations remove the culture medium and fix the tissue with 4% paraformaldehyde for 2 h.

4.1.2 Remove 4% paraformaldehyde and transfer the SIS from the metal insert to a tissue embedding cassette. Water the tissue to remove remaining fixative and dehydrate for paraffin infiltration.

4.1.3 Before embedding in a paraffin block, cut the SIS in 2 - 3 slices and place them in a paraffin-filled metal base mold so that the cut surfaces face downwards. Add the tissue cassette on top of the mold as a backing.

4.1.4 Cut 5 µm slices and float them on a 40°C water bath for straightening, then mount slides onto suitable glass slides. Uncoated slides are used for H&E-stains, polylysine-coated slides for immunohistological staining to improve attachment. Let slices dry thoroughly.

4.1.5 Melt paraffin, remove it with xylene and rehydrate slices for following staining.

4.2 Staining

4.2.1 The rehydrated slices can be stained with Hematoxylin/Eosin as a standardized overview staining.

4.2.2 For immunohistological staining, the fixed and paraffin-infiltrated tissue slices must undergo an antigen retrieval to allow antibodies to recognize and bind to their specific epitopes. Therefore, deparaffinized and rehydrated slides are placed in a steam cooker with heated citrate buffer (pH 6,0) for 20 min.

4.2.3 Transfer slides to washing buffer (0.5 M TBS buffer + 0.5% Tween) and circle slices with a PAP pen to minimize the required volume for staining solutions.

4.2.4 Place the slide in a moisture chamber. To secure a specific horseradish peroxidase-mediated visualization of antigen-antibody-binding, the endogenous peroxidase must be saturated with 3% hydrogen peroxide.

4.2.5 Primary antibody dilutions are applied to the slices, incubated for 1 h at RT and carefully washed off with washing buffer.

4.2.6 For detection of specific antigen-antibody bindings the Ultra Vision Quanto Detection System HRP DAB (Thermo Scientific) is used according to the recommended protocol.

4.2.7 Nuclei are counterstained with Hematoxylin for 1 min.

4.2.8 Slides are mounted with an aqueous medium, dried and imaged using an inverse microscope.

Representative Results:

As shown in figure 1B, we decellularized the porcine jejunal segment (about 2 m in length and 20 mm in diameter) with preserved tubular structures of the capillary network. After chemical, enzymatic and mechanical decellularization, we obtained a collagen I/ III scaffold, which can be used for 3D cell culture. A Feulgen test was performed to demonstrate the purity (no DNA remnants) of the matrix (data not shown).

Figure 2A and 2B show the static culture of SIS-Muc secured by the cell crowns. We fixed the SIS-Muc in an in-house designed bioreactor (figure 2C) for dynamic culture. Figure 2D illustrates the simulated dynamic flow through the chamber of the bioreactor. The bioreactor is placed in a self-constructed incubator system and connected with a peristaltic pump. This setup allows a dynamic culture with either pressure-regulated pulsatile flow or constant flow.

Figure 3 gives an overview of the statically cultured S462 tumor cell line in 2D monoculture (figure 3A) and in 3D coculture (figure 3B-D). Figure 3B shows the triple culture of tumor cells S462 and primary fibroblasts on the apical side of SIS-Muc (former inner lumen side) and mvEC on the basolateral side (former serosa side). The identification of different cell types is possible by staining cell-type specific markers, such as von Willebrand factor to label mvEC (figure 3C). The p53-positive S462 cells can be distinguished from the p53-negative primary fibroblasts (figure 3D) and the 3D distribution of cells can be analyzed. Figure 4 shows stainings equivalent to figure 3 of the dynamically cultured triple culture.

Tables and Figures:

Figure 1: DECELLULARIZATION SET-UP. (A) Bioreactor and pump set-up for decellularizing the BioVaSc, monitored by a PC. (B) Decellularized BioVaSc in glass tank. The lumen and the arterial inlet are connected to the adapters.

Figure 2: OVERVIEW OF THE DIFFERENT CULTURE SET-UPS. (A) CAD section view of static culture system in Microtiter well plate, (B) metal inserts for static culture, (C) medium flow simulation (velocity field [m/s]) for dynamic culture of the upper lid of the flow bioreactor, (D) flow bioreactor for dynamic culture connected to the peristaltic pump.

Figure 3: OVERVIEW OF THE IMMUNOHISTOLOGICAL CHARACTERIZATION OF THE STATIC 3D TUMOR MODEL. (A) Hematoxylin stain of the statically cultured 2D mono culture of S462 cells on a permanox slide, (B) H&E stain of the statically cultured 3D triple culture, arrows mark endothelial cells, (C) immunohistological staining for von Willebrand factor, (D) immunohistological staining for p53.

Figure 4: OVERVIEW OF THE IMMUNOHISTOLOGICAL CHARACTERIZATION OF THE DYNAMIC 3D TUMOR MODEL. (A) H&E stain of the dynamically cultured 3D triple culture, arrows mark endothelial cells, (B) immunohistological staining for von Willebrand factor, (C) immunohistological staining for p53.

Discussion:

When comparing 2D and 3D culture systems in tumor research, 3D systems, despite being the more expensive approach, have proven to mimic the conditions in biological microenvironments better. It could be shown that some tumor cells grow much slower in a 3D culture than in a common 2D culture¹⁴, which is in accordance to the situation in a real tumor. Bissell and coworkers showed in their work that the behavior of carcinogenic breast cells reflects the *in vivo* situation, including cell morphology and signaling, more accurately when a 3D culture within a matrix offers cell-ECM interactions. Furthermore, they emphasized the importance of the extracellular environment in 3D by demonstrating that changes in the environmental interactions led to the reversion of the malignant cells to a normal phenotype. Additionally and most importantly, these outcomes could also be confirmed in *in vivo* animal models^{10,11}.

The direct comparison of *in vivo* animal experiments and *in vitro* tissue models reveals advantages and drawbacks in both systems. One advantage of *in vitro* models is the permission of a much better real-time or fixed imaging by microscopy. A limitation is that they mimic static or short-term conditions, whereas *in vivo* systems often progress. The current lack of vasculature and normal transport of small molecules, host immune responses, and other cell-cell interactions are further disadvantages of *in vitro* models¹². Therefore, 3D *in vitro* systems as presented in this study offer a promising addition to animal experiments. They provide a better comparability to the human organism and therefore minimize experimental misinterpretations. Biomimetic *in vivo* model systems will hence become more relevant to study how cancer and metastatic spread is dependent on microenvironmental conditions that regulate

tumorigenesis¹¹.

Our study shows that the 3D environment provided by the SIS-Muc leads to a more tumor-like tissue formation of cells, which is not observed in the common 2D cell culture (see figure 3A). Moreover, the use of primary cells derived from tumor biopsies is a very important step towards personalized medicine, a discipline that aims at identifying the best treatment depending on a patient's individual needs. Incorporating primary patient-specific tumor cells isolated from biopsy material will allow in vitro testing of therapeutic strategies. Such test systems will make it possible to investigate different drugs and combinations thereof in a time- and cost-saving high-throughput screening. Additionally, the integration of tumor-associated stromal cells as shown in this study is important for the personalized approach, since a tumor's microenvironment influences tumor progression¹³ and might prove as suitable therapeutic target.

Alternatively to a personalized approach, our tumor model can be modified to serve as a generalized tumor test system by the incorporation of established tumorigenic cell lines. This is a promising adaptation for basic research purposes. For both drug testing approaches the presence of a vascular structure is required to test the distribution and uptake of therapeutic substances. The SIS-Muc matrix allows the basolateral seeding with primary mvEC for barrier uptake studies, the reseeded of the preserved vascular structures of the BioVaSc will further improve the study of drug delivery.

In order to create tissue models, a 3D biodegradable matrix can be used as framework for a co-culture of different cell types¹⁴. The use of such 3D matrices is often limited by the absence of a functional vascularization. This problem can be solved by the use of the BioVaSc, which offers preserved blood vessel structures, which can be reseeded with endothelial cells. Furthermore, the BioVaSc provides extracellular components, which ensure the adhesion of the cells and facilitate tissue differentiation. It also enables the long-time tissue specific function of bioartificial 3D tissues^{7,8,15}. The prerequisite for the engineering of functional vascular substitutes is the mimicking of human physiological and biomechanical conditions. Therefore, bioreactor systems, which can implement these requirements *in vitro*, are of extreme interest for creating biological tumor models.

The combination of the BioVaSc, the bioreactor technology and co-culturing of different cell-types is a very promising method to generate vascularized tumor tissues, which will allow the study of mechanisms relevant for cancer progression such as angiogenesis and metastasis. We see such tumor models as a promising approach for complementing animal studies by providing an equivalent to the human tumor physiology.

Acknowledgments:

The authors would like to thank Jan Hansmann (Fraunhofer IGB, Stuttgart) for his technical support to develop bioreactors and the bioreactor incubator.

Disclosures: Authors have nothing to disclose.

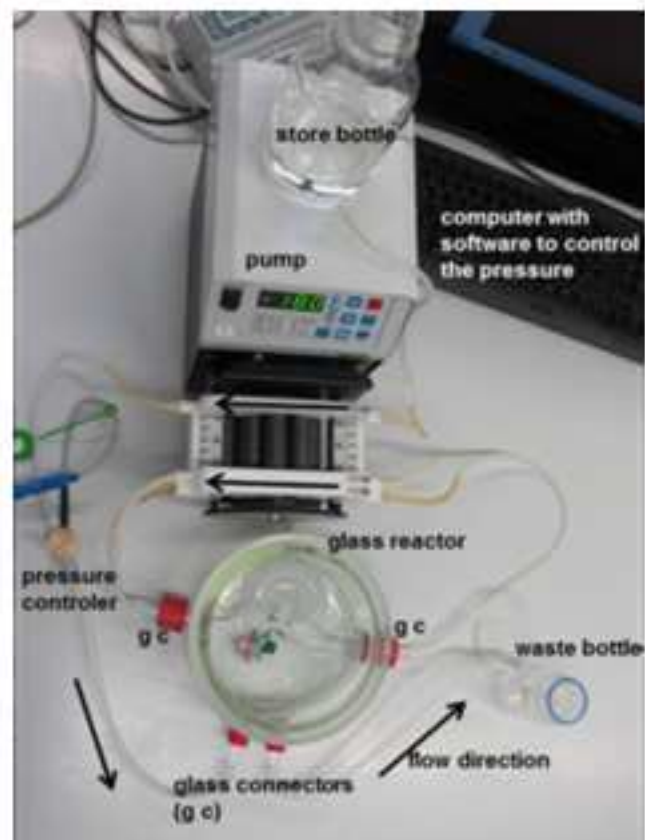
Table of specific reagents and equipment:

Name of the reagent	Company	Catalogue number	Comments (optional)
Collagenase solution	SERVA	17454	(500 U/ml)
Dispase solution	Gibco	17105-041	(2,0 U/ml)
DMEM, high-glucose	PAA	G0001,3010	
DNase	ROCHE	10104159001	200 mg solved in 500 ml PBS ⁺ + 1% PenStrep
DZ solution	Roth	3484.2	34 g Sodium Desoxycholate , in 1 l Ultra-pure water
FCS	LONZA	DE14-801F	
IHC-Kit DCS SuperVision 2 HRP	DCS	PD000KIT	
medical pressure transducer	MEMSCAP	SP844	
monoclonal mouse anti-human Von Willebrand Factor	DAKO Cytomation	M0616	Clone F8/86 0,12 µg/ml
mouse monoclonal anti-human p53	DAKO Cytomation	IS616	Clone DO-7 ready-to-use
peristaltic pump	Ismatec		
sterile disposable dome	MEMSCAP	844-28	
Trypsin / EDTA solution	PAA	L11-003	0,05%
VascuLife (VEGF-Mv)	Lifeline	LL-0003	
Versene	Gibco	15040-033	

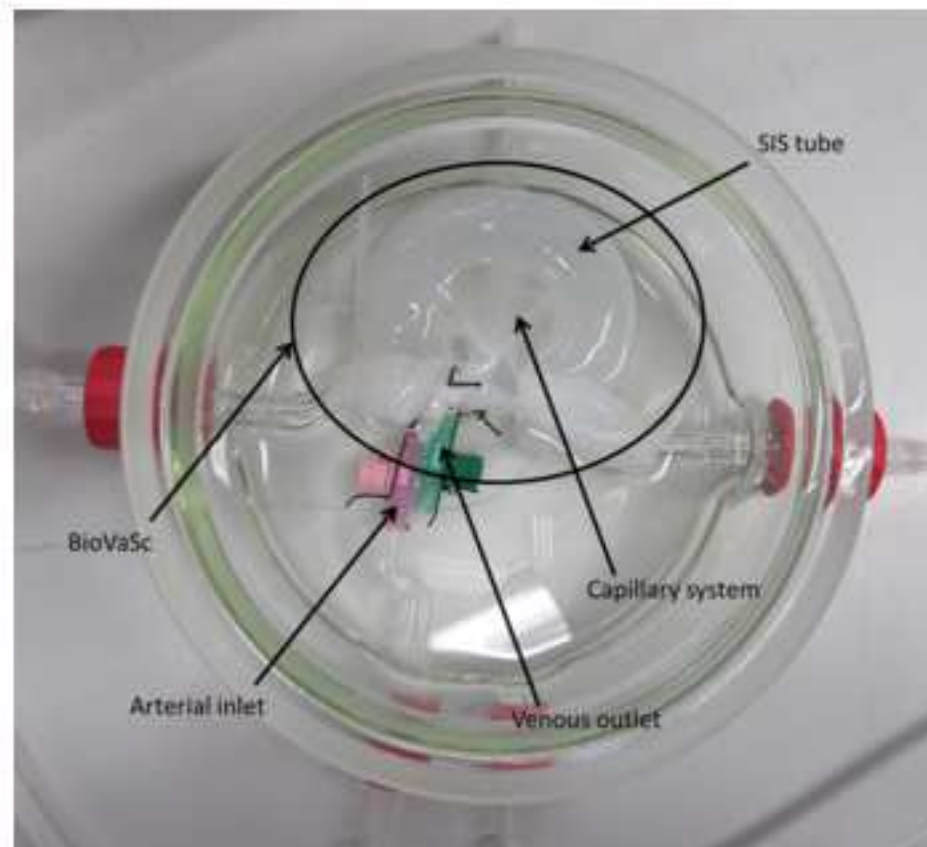
References

1. Schenke-Layland, K., Nerem, R. M. In vitro human tissue models--moving towards personalized regenerative medicine, *Adv. Drug Deliv. Rev.* **63**, 195–196 (2011).
2. Pusch, J., Votteler, M. *et al.* The physiological performance of a three-dimensional model that mimics the microenvironment of the small intestine, *Biomaterials* **32**, 7469–7478 (2011).
3. Schanz, J., Pusch, J., Hansmann, J., Walles, H. Vascularised human tissue models: a new approach for the refinement of biomedical research, *J. Biotechnol.* **148**, 56–63 (2010).
4. Lanza, R., Langer, R., Vacanti, J. *Principles of tissue engineering*. 3rd ed. (Elsevier Academic Press, Burlington, MA, 2007).
5. Barron, V., Lyons, E., Stenson-Cox, C., McHugh, P. E., Pandit, A. Bioreactors for cardiovascular cell and tissue growth: a review, *Ann Biomed Eng* **31**, 1017–1030 (2003).
6. Martin, I., Wendt, D., Heberer, M. The role of bioreactors in tissue engineering, *Trends Biotechnol.* **22**, 80–86 (2004).
7. Mertsching, H., Walles, T., Hofmann, M., Schanz, J., Knapp, W. H. Engineering of a vascularized scaffold for artificial tissue and organ generation, *Biomaterials* **26**, 6610–6617 (2005).
8. Linke, K., Schanz, J., Hansmann, J., Walles, T., Brunner, H., Mertsching, H. Engineered liver-like tissue on a capillarized matrix for applied research, *Tissue Eng.* **13**, 2699–2707 (2007).
9. Holtkamp, N., Atallah, I. *et al.* MMP-13 and p53 in the progression of malignant peripheral nerve sheath tumors, *Neoplasia* **9**, 671–677 (2007).
10. Weaver, V. M., Petersen, O. W. *et al.* Reversion of the malignant phenotype of human breast cells in three-dimensional culture and in vivo by integrin blocking antibodies, *J. Cell Biol.* **137**, 231–245 (1997).
11. Hutmacher, D. W., Horch, R. E. *et al.* Translating tissue engineering technology platforms into cancer research, *J. Cell. Mol. Med.* **13**, 1417–1427 (2009).
12. Yamada, K. M., Cukierman, E. Modeling tissue morphogenesis and cancer in 3D, *Cell* **130**, 601–610 (2007).
13. Hanahan, D., Weinberg, R. A. Hallmarks of cancer: the next generation, *Cell* **144**, 646–674 (2011).
14. Yang, S.-T., Zhang, X., Wen, Y. Microbioreactors for high-throughput cytotoxicity assays, *Curr Opin Drug Discov Devel* **11**, 111–127 (2008).
15. Schultheiss, D., Gabouev, A. I. *et al.* Biological vascularized matrix for bladder tissue engineering: matrix preparation, reseeding technique and short-term implantation in a porcine model, *J. Urol.* **173**, 276–280 (2005).

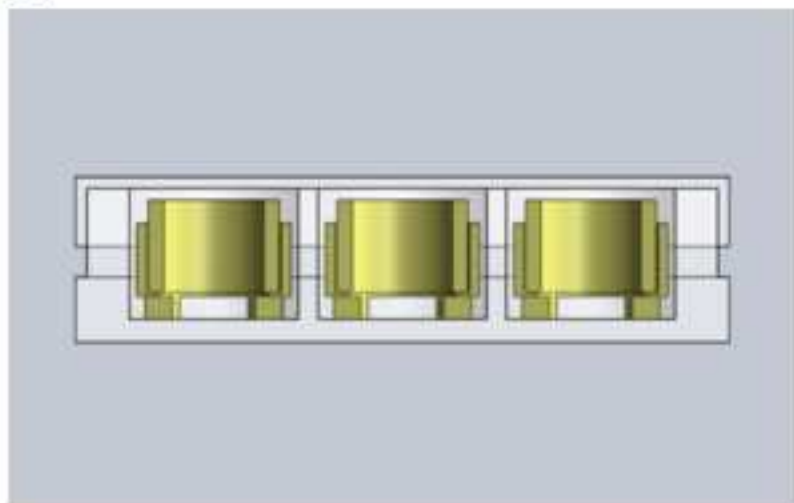
A



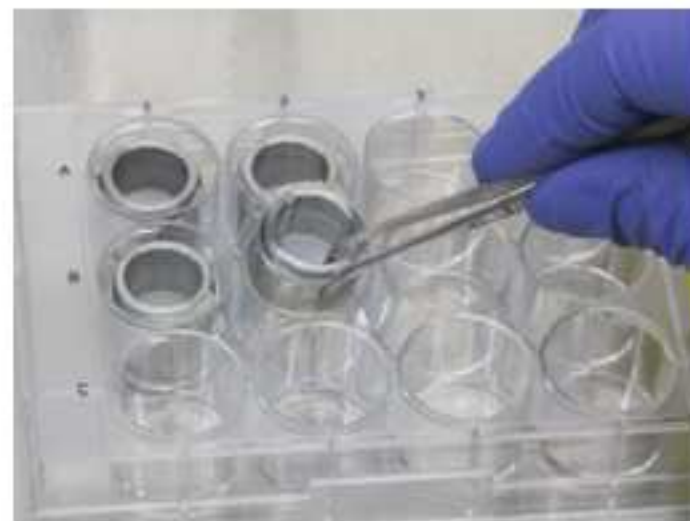
B



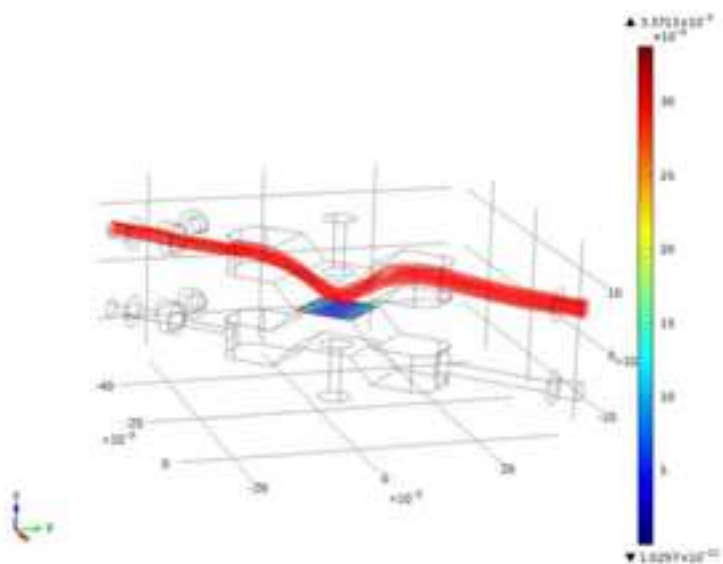
A



B



C



D

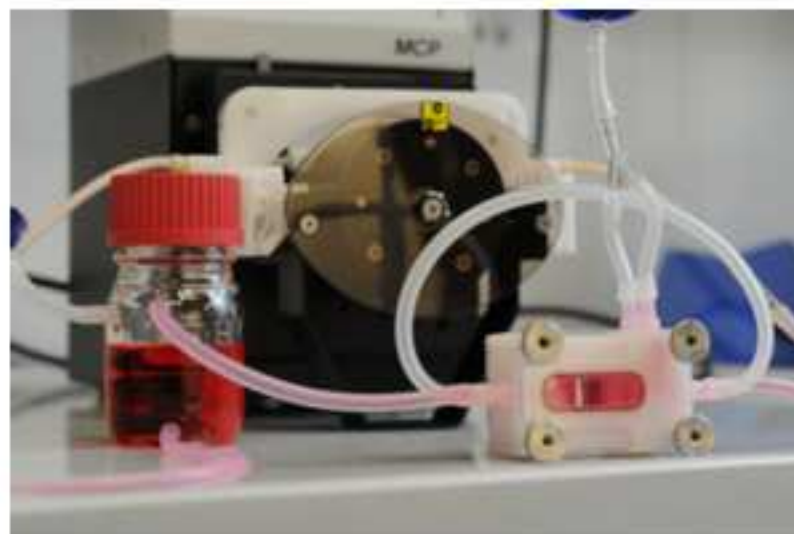
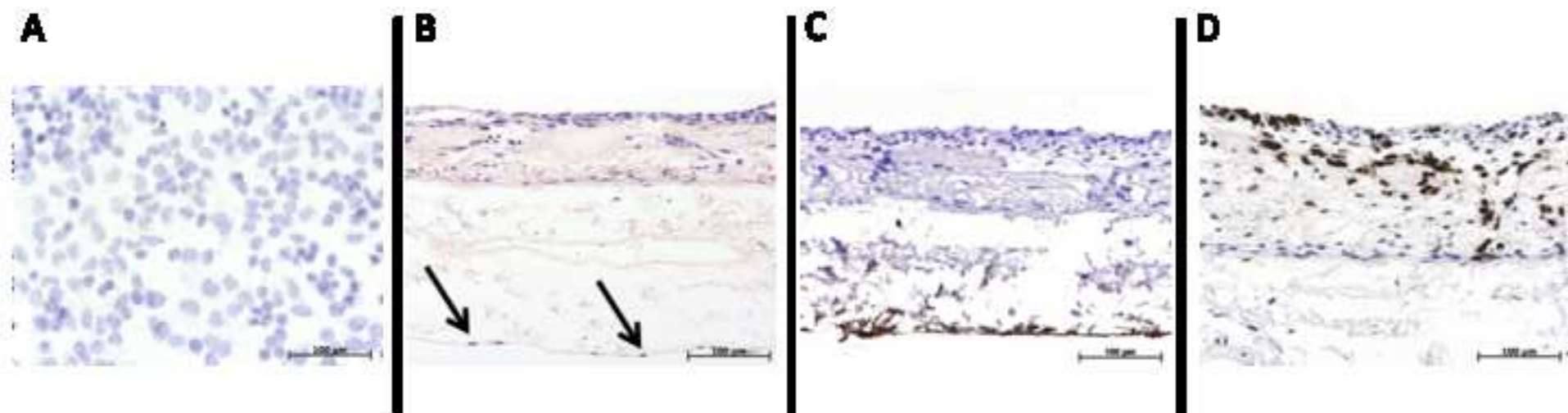
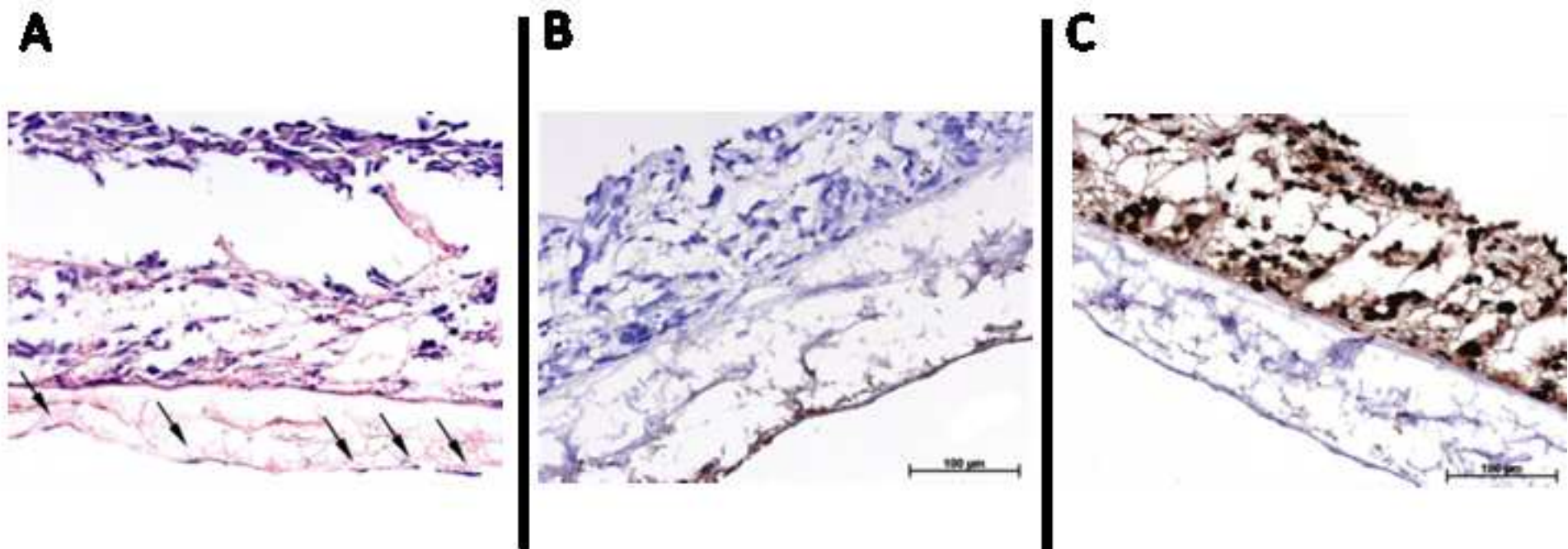


Figure 3
[Click here to download high resolution image](#)





*Table of Reagents/ Materials Used

[Click here to download Table of Reagents/ Materials Used: 50460_R0_10_18_12_materials.xlsx](#)

Name of Reagent/Material	Company	Catalog Number	Comments
AZ solution	Roth	3484.2	34 g Sodium Desoxychel ate , in 1 l Ultra-pure water
Collagenase solution	SERVA	17454	(500 U/ml)
Dispase solution	Gibco	17105-041	(2,0 U/ml)
DMEM, high-glucose	PAA	G0001,3010	
DNase	ROCHE	10104159001	200 mg solved in 500 ml PBS ⁺ + 1% PenStrep
sterile disposable dome	MEMSCAP	844-28	
FCS	LONZA	DE14-801F	
IHC-Kit DCS SuperVision 2 HRP	DCS	PD000KIT	
mouse monoclonal anti- human p53	DAKO Cytomation	IS616	Clone DO-7 ready-to- use
peristaltic pump	Ismatec		
medical pressure transducer	MEMSCAP	SP844	
Trypsin / EDTA solution	PAA	L11-003	0.05%
VascuLife (VEGF-Mv)	Lifeline	LL-0003	
Versene	Gibco	15040-033	

monoclonal mouse	DAKO	M0616	Clone F8/86
anti-human	Cytomation		0,12 µg/ml
Von Willebrand Factor			



17 Sellers Street
Cambridge, MA 02139
tel. +1.617.945.9051
www.JoVE.com

ARTICLE AND VIDEO LICENSE AGREEMENT

Title of Article:

TISSUE ENGINEERING OF A HUMAN 3D IN VITRO TUTOR

Author(s):

Reboredo, J., Toll, C., Schwarz, T., Appelt, A., Scharlein, S., TEST SYST
Walley, H., Miete, S.

Item 1 (check one box): The Author elects to have the Materials be made available (as described at

<http://www.jove.com/publish>) via: ☐ Standard Access ☒ Open Access

Item 2 (check one box):

☒ The Author is NOT a United States government employee.

☐ The Author is a United States government employee and the Materials were prepared in the course of his or her duties as a United States government employee.

☐ The Author is a United States government employee but the Materials were NOT prepared in the course of his or her duties as a United States government employee.

ARTICLE AND VIDEO LICENSE AGREEMENT

1. **Defined Terms.** As used in this Article and Video License Agreement, the following terms shall have the following meanings: **"Agreement"** means this Article and Video License Agreement; **"Article"** means the article specified on the last page of this Agreement, including any associated materials such as texts, figures, tables, artwork, abstracts, or summaries contained therein; **"Author"** means the author who is a signatory to this Agreement; **"Collective Work"** means a work, such as a periodical issue, anthology or encyclopedia, in which the Materials in their entirety in unmodified form, along with a number of other contributions, constituting separate and independent works in themselves, are assembled into a collective whole; **"CRC License"** means the Creative Commons Attribution-Non Commercial-No Derivs 3.0 Unported Agreement, the terms and conditions of which can be found at: <http://creativecommons.org/licenses/by-nc-nd/3.0/legalcode>; **"Derivative Work"** means a work based upon the Materials or upon the Materials and other pre-existing works, such as a translation, musical arrangement, dramatization, fictionalization, motion picture version, sound recording, art reproduction, abridgment, condensation, or any other form in which the Materials may be recast, transformed, or adapted; **"Institution"** means the institution, listed on the last page of this Agreement, by which the Author was employed at the time of the creation of the Materials; **"JoVE"** means MyJoVE Corporation, a Massachusetts corporation and the publisher of *The Journal of Visualized Experiments*; **"Materials"** means the Article and / or the Video; **"Parties"** means the Author and JoVE; **"Video"** means any video(s) made by the Author, alone or in conjunction with any other parties, or by JoVE or its affiliates or agents, individually or in collaboration with the Author or any other parties, incorporating all or any portion of the Article, and in which the Author may or may not appear.

2. **Background.** The Author, who is the author of the Article, in order to ensure the dissemination and protection of the Article, desires to have the JoVE publish the Article and create and transmit videos based on the Article. In furtherance of such goals, the Parties desire to memorialize in this Agreement the respective rights of each Party in and to the Article and the Video.

3. **Grant of Rights in Article.** In consideration of JoVE agreeing to publish the Article, the Author hereby grants to JoVE, subject to **Sections 4** and **7** below, the exclusive, royalty-free, perpetual (for the full term of copyright in the Article, including any extensions thereto) license (a) to publish, reproduce, distribute, display and store the Article in all forms, formats and media whether now known or hereafter developed (including without limitation in print, digital and electronic form) throughout the world, (b) to translate the Article into other languages, create adaptations, summaries or extracts of the Article or other Derivative Works (including, without limitation, the Video) or Collective Works based on all or any portion of the Article and exercise all of the rights set forth in (a) above in such translations, adaptations, summaries, extracts, Derivative Works or Collective Works and (c) to license others to do any or all of the above. The foregoing rights may be exercised in all media and formats, whether now known or hereafter devised, and include the right to make such modifications as are technically necessary to exercise the rights in other media and formats. If the "Open Access" box has been checked in **Item 1** above, JoVE and the Author hereby grant to the public all such rights in the Article as provided in, but subject to all limitations and requirements set forth in, the CRC License.

4. **Retention of Rights in Article.** Notwithstanding the exclusive license granted to JoVE in **Section 3** above, the

ARTICLE AND VIDEO LICENSE AGREEMENT

Author shall, with respect to the Article, retain the non-exclusive right to use all or part of the Article for the non-commercial purpose of giving lectures, presentations or teaching classes, and to post a copy of the Article on the Institution's website or the Author's personal website, in each case provided that a link to the Article on the JoVE website is provided and notice of JoVE's copyright in the Article is included. All non-copyright intellectual property rights in and to the Article, such as patent rights, shall remain with the Author.

5. Grant of Rights in Video – Standard Access. This **Section 5** applies if the "Standard Access" box has been checked in **Item 1** above or if no box has been checked in **Item 1** above. In consideration of JoVE agreeing to produce, display or otherwise assist with the Video, the Author hereby acknowledges and agrees that, Subject to **Section 7** below, JoVE is and shall be the sole and exclusive owner of all rights of any nature, including, without limitation, all copyrights, in and to the Video. To the extent that, by law, the Author is deemed, now or at any time in the future, to have any rights of any nature in or to the Video, the Author hereby disclaims all such rights and transfers all such rights to JoVE.

6. Grant of Rights in Video – Open Access. This **Section 6** applies only if the "Open Access" box has been checked in **Item 1** above. In consideration of JoVE agreeing to produce, display or otherwise assist with the Video, the Author hereby grants to JoVE, subject to **Section 7** below, the exclusive, royalty-free, perpetual (for the full term of copyright in the Article, including any extensions thereto) license (a) to publish, reproduce, distribute, display and store the Video in all forms, formats and media whether now known or hereafter developed (including without limitation in print, digital and electronic form) throughout the world, (b) to translate the Video into other languages, create adaptations, summaries or extracts of the Video or other Derivative Works or Collective Works based on all or any portion of the Video and exercise all of the rights set forth in (a) above in such translations, adaptations, summaries, extracts, Derivative Works or Collective Works and (c) to license others to do any or all of the above. The foregoing rights may be exercised in all media and formats, whether now known or hereafter devised, and include the right to make such modifications as are technically necessary to exercise the rights in other media and formats. For any Video to which this Section 6 is applicable, JoVE and the Author hereby grant to the public all such rights in the Video as provided in, but subject to all limitations and requirements set forth in, the CRC License.

7. Government Employees. If the Author is a United States government employee and the Article was prepared in the course of his or her duties as a United States government employee, as indicated in **Item 2** above, and any of the licenses or grants granted by the Author hereunder exceed the scope of the 17 U.S.C. 403, then the rights granted hereunder shall be limited to the maximum rights permitted under such statute. In such case, all provisions contained herein that are not in conflict with such statute shall remain in full force and effect, and all provisions contained herein that do so conflict

shall be deemed to be amended so as to provide to JoVE the maximum rights permissible within such statute.

8. Likeness, Privacy, Personality. The Author hereby grants JoVE the right to use the Author's name, voice, likeness, picture, photograph, image, biography and performance in any way, commercial or otherwise, in connection with the Materials and the sale, promotion and distribution thereof. The Author hereby waives any and all rights he or she may have, relating to his or her appearance in the Video or otherwise relating to the Materials, under all applicable privacy, likeness, personality or similar laws.

9. Author Warranties. The Author represents and warrants that the Article is original, that it has not been published, that the copyright interest is owned by the Author (or, if more than one author is listed at the beginning of this Agreement, by such authors collectively) and has not been assigned, licensed, or otherwise transferred to any other party. The Author represents and warrants that the author(s) listed at the top of this Agreement are the only authors of the Materials. If more than one author is listed at the top of this Agreement and if any such author has not entered into a separate Article and Video License Agreement with JoVE relating to the Materials, the Author represents and warrants that the Author has been authorized by each of the other such authors to execute this Agreement on his or her behalf and to bind him or her with respect to the terms of this Agreement as if each of them had been a party hereto as an Author. The Author warrants that the use, reproduction, distribution, public or private performance or display, and/or modification of all or any portion of the Materials does not and will not violate, infringe and/or misappropriate the patent, trademark, intellectual property or other rights of any third party. The Author represents and warrants that it has and will continue to comply with all government, institutional and other regulations, including, without limitation all institutional, laboratory, hospital, ethical, human and animal treatment, privacy, and all other rules, regulations, laws, procedures or guidelines, applicable to the Materials, and that all research involving human and animal subjects has been approved by the Author's relevant institutional review board.

10. JoVE Discretion. If the Author requests the assistance of JoVE in producing the Video in the Author's facility, the Author shall ensure that the presence of JoVE employees, agents or independent contractors is in accordance with the relevant regulations of the Author's institution. If more than one author is listed at the beginning of this Agreement, JoVE may, in its sole discretion, elect not take any action with respect to the Article until such time as it has received complete, executed Article and Video License Agreements from each such author. JoVE reserves the right, in its absolute and sole discretion and without giving any reason therefore, to accept or decline any work submitted to JoVE. JoVE and its employees, agents and independent contractors shall have full, unfettered access to the facilities of the Author or of the Author's institution as necessary to make the Video, whether actually published or not. JoVE has sole discretion as to the method of making and publishing the Materials, including,

ARTICLE AND VIDEO LICENSE AGREEMENT

without limitation, to all decisions regarding editing, lighting, filming, timing of publication, if any, length, quality, content and the like.

11. **Indemnification.** The Author agrees to indemnify JoVE and/or its successors and assigns from and against any and all claims, costs, and expenses, including attorney's fees, arising out of any breach of any warranty or other representations contained herein. The Author further agrees to indemnify and hold harmless JoVE from and against any and all claims, costs, and expenses, including attorney's fees, resulting from the breach by the Author of any representation or warranty contained herein or from allegations or instances of violation of intellectual property rights, damage to the Author's or the Author's institution's facilities, fraud, libel, defamation, research, equipment, experiments, property damage, personal injury, violations of institutional, laboratory, hospital, ethical, human and animal treatment, privacy or other rules, regulations, laws, procedures or guidelines, liabilities and other losses or damages related in any way to the submission of work to JoVE, making of videos by JoVE, or publication in JoVE or elsewhere by JoVE. The Author shall be responsible for, and shall hold JoVE harmless from, damages caused by lack of sterilization, lack of cleanliness or by contamination due to the making of a video by JoVE its employees, agents or independent contractors. All sterilization, cleanliness or decontamination procedures shall be solely the responsibility of the Author and shall be undertaken at the Author's expense. All indemnifications provided herein shall include JoVE's attorney's fees and costs related to said losses or

damages. Such indemnification and holding harmless shall include such losses or damages incurred by, or in connection with, acts or omissions of JoVE, its employees, agents or independent contractors.

12. **Fees.** To cover the cost incurred for publication, JoVE must receive payment before production and publication the Materials. Payment is due in 21 days of invoice. Should the Materials not be published due to an editorial or production decision, these funds will be returned to the Author. Withdrawal by the Author of any submitted Materials after final peer review approval will result in a US\$1,200 fee to cover pre-production expenses incurred by JoVE. If payment is not received by the completion of filming, production and publication of the Materials will be suspended until payment is received.

13. **Transfer, Governing Law.** This Agreement may be assigned by JoVE and shall inure to the benefits of any of JoVE's successors and assignees. This Agreement shall be governed and construed by the internal laws of the Commonwealth of Massachusetts without giving effect to any conflict of law provision thereunder. This Agreement may be executed in counterparts, each of which shall be deemed an original, but all of which together shall be deemed to me one and the same agreement. A signed copy of this Agreement delivered by facsimile, e-mail or other means of electronic transmission shall be deemed to have the same legal effect as delivery of an original signed copy of this Agreement.

A signed copy of this document must be sent with all new submissions. Only one Agreement required per submission.

AUTHOR:

Name:

JENNY REBOREDO

Department:

TISSUE ENGINEERING & REG. MEDICINE

Institution:

UNIVERSITY CLINIC WÜRZBURG

Article Title:

Tissue Engineering of a human 3D in vitro tumor test system

Signature:

Jenny Reborredo

Date:

10.10.2017

Please submit a signed and dated copy of this license by one of the following three methods:

- 1) Upload a scanned copy as a PDF to the JoVE submission site upon manuscript submission (preferred);
- 2) Fax the document to +1.866.381.2236; or
- 3) Mail the document to JoVE / Attn: JoVE Editorial / 17 Sellers St / Cambridge, MA 02139

For questions, please email editorial@jove.com or call +1.617.945.9051.

MS # (internal use):

Dear Editor and Reviewers,

Thank you for your comments regarding our submission, "Tissue Engineering of a human 3D *in vitro* tumor test system". We have addressed your concerns and have included a version of our manuscript with all changes made marked.

Kind regards,

Corinna Moll & Jenny Reboredo

Tissue Engineering of a human 3D *in vitro* tumor test system

Authors:

Corinna Moll, Jenny Reboredo, Thomas Schwarz, Antje Appelt, Sebastian Schürlein, Heike Walles, Sarah Nietzer

Authors: institution(s)/affiliation(s) for each author:

Corinna Moll

Chair of Tissue Engineering and Regenerative Medicine
University Clinic Würzburg

corinna.moll@uni-wuerzburg.de

Jenny Reboredo

Chair of Tissue Engineering and Regenerative Medicine
University Clinic Würzburg

jenny.reboredo@uni-wuerzburg.de

Thomas Schwarz

Chair of Tissue Engineering and Regenerative Medicine
University Clinic Würzburg

thomas.schwarz@uni-wuerzburg.de

Antje Appelt

Chair of Tissue Engineering and Regenerative Medicine
University Clinic Würzburg

antje.appelt@uni-wuerzburg.de

Sebastian Schürlein

Chair of Tissue Engineering and Regenerative Medicine
University Clinic Würzburg

sebastian.schuerlein@uni-wuerzburg.de

Heike Walles

Chair of Tissue Engineering and Regenerative Medicine
University Clinic Würzburg

heike.walles@uni-wuerzburg.de

Sarah Nietzer

Chair of Tissue Engineering and Regenerative Medicine
University Clinic Würzburg

Sarah.nietzer@uni-wuerzburg.de

Corresponding authors:

Corinna Moll, Jenny Reboredo (contributed equally to the work)

Keywords:

Decellularization, BioVaSc, primary cell isolation, tumor test system, dynamic culture conditions, bioreactor, 3D *in vitro* models

Short Abstract:

Methods to create human 3D tumor tissues as test systems are described. These technologies are based on a decellularized Biological Vascularized Scaffold (BioVaSc) ~~(- and)~~, primary human cells and a tumor cell line, which can be cultured under static as well as under dynamic conditions in a flow bioreactor.

Long Abstract:

Cancer is one of the leading causes of death worldwide. Current therapeutic strategies are predominantly developed in 2D culture systems, which inadequately reflect physiological conditions *in vivo*. Biological 3D matrices provide cells an environment in which cells can self-organize, allowing the study of tissue organization and cell differentiation. Such scaffolds can be seeded with a mixture of different cell types to study direct 3D cell-cell-interactions. To mimic the 3D complexity of cancer tumors, our group has developed a 3D *in vitro* tumor test system.

Our 3D tissue test system models the *in vivo* situation of malignant peripheral nerve sheath tumors (MPNSTs), which we established with our decellularized porcine jejunal segment derived biological vascularized scaffold (BioVaSc). In our model, we reseeded a modified BioVaSc matrix with primary fibroblasts, microvascular endothelial cells (mvECs) and the S462 tumor cell line. For static culture, the ~~vasculature~~revascular structure of the BioVaSc is removed and the remaining scaffold is cut open on one side (Small Intestinal Submucosa SIS-Muc). The resulting matrix is then fixed between two metal rings (cell crowns).

Another option is to culture the cell-seeded SIS-Muc in a flow bioreactor system that exposes the cells to shear stress. Here, the bioreactor is connected to a peristaltic pump in a self-constructed incubator. A computer regulates the arterial oxygen and nutrient supply via parameters such as blood pressure, temperature, and flow rate. This setup allows for a dynamic culture with either pressure-regulated pulsatile or constant flow.

In this study, we could successfully establish both a static and dynamic 3D ~~test~~culture system for MPNSTs. The ability to model cancer tumors in a more natural 3D environment will enable the discovery, testing and validation of future pharmaceuticals in a human-like model.

Introduction:

New pharmaceuticals must be validated in regard to their quality, safety and efficacy before market authorization. To date, animal experiments are the standard method for drug testing and validation. However, due to species-specific differences, animal experiments often do not comprehensively evaluate the effect of the compounds in humans¹. For this reason, it is

important to generate human tissue models that can be used for *in vitro* tests of new drugs and substances.

One of the focuses of our group is the creation of *in vitro* test models with our biological vascularized scaffold (BioVaSc)-^{1,2,3}. The BioVaSc can be used as a static or dynamic 3D matrix system. For static culture, the decellularized porcine jejunal segment (Small Intestinal Submucosa SIS-Muc) is placed in a metal insert for cell reseeding. Various cells, such as cancer and endothelial cells can be cultured on the scaffold.

For dynamic culture, the BioVaSc is attached to a bioreactor system that applies flow throughout the vasculature or across the surface of the scaffold. Current bioreactors implement biological, mechanical or electrical stimuli that act upon the differentiation or proliferation of cells²cells⁴. For bioreactors in the field of Tissue Engineering, the basic concept is to simulate the conditions in the human body. Wherein, cells are provided a natural environment in which they can interact with each other and their surrounding extracellular matrix. For the production of *in vitro* test systems or transplants, the ability to mimic the natural ~~enviroment~~environment of cells with an appropriate carrier structure and bioreactor system is ~~critical~~³critical⁵. Therefore, more complex and technically demanding devices must be developed in order to fulfill these ~~tasks~~⁴tasks⁶.

For the establishment of our tumor model, we used a scaffold derived from a porcine jejunal segment with preserved tubular structures, which include the feeding artery, vein and the connecting capillary bed. All porcine cells were removed by chemical, mechanical and enzymatic decellularization, and the scaffold was gamma-sterilized. The restored tubular vascular structures was subsequently reseeded with human microvascular endothelial cells using a recirculation perfusion ~~bioreactor~~⁵bioreactor⁷, which mimics the biomechanical and/or biochemical parameters such as pH, temperature, pressure, nutrient supply and waste ~~removal~~⁴removal⁶. The re-endothelialization of the tubular structures creates a human blood vessel equivalent within the collagenous ~~scaffold~~^{5,6}scaffold^{3,7}. In the following step, the surface of the former lumen (mucosa) was seeded with primary human cells to establish co-~~culture~~⁵culture^{3,7,8}.

Formatted: Not Superscript/ Subscript

Protocol:

1.) Decellularization of the BioVaSc

1.1) Rinse the vascular system of the porcine jejunal segment via cannulated arterial access and the intestinal lumen with PBS⁷. Repeat until it is completely clean.

1.2) Prepare reactor as shown in figure 1.

1.2) Prepare a 200 mm diameter glass tank with 4 adapters and connect them via silicon tubes to the peristaltic pump (Ismatec). The pressure controlling unit can be monitored via a pressure sensor that is connected to a sterile disposable dome (see figure 1).

1.3) Fill reservoir bottles with decellularization (DZ) solution, check the tubing system for possible air bubbles and pump 500 ml DZ solution into the red arterial access (~~fig-~~figure 1B) of the vascular system.

1.4) Connect the intestinal lumen with cable ties to the glass connectors for luminal flow. Interrupt the pumping process every 15 minutes shortly to manually press out the entire intestinal lumen.

1.5) During the decellularization process, the pressure of the buffer solution should be between 80 - 100 mm Hg, modeled after the natural blood pressure.

1.6) Wash the BioVaSc with PBS⁻ until it is free of cell remnants ("completely white").

1.7) Fill the BioVaSc completely with DZ solution and incubate it submers in DZ solution over night at 4°C on rocking shaker.

1.8) Repeat step 1.6.

1.9) IncubatePlace the BioVaSc within DNase solution and incubate over night at 4°C on rocking shaker.

1.10) Remove DNase solution and rinse with washing buffer.

1.11) γ -sterilization with 25 kGy

2.) The different cell types

2.1) Isolation of primary human dermal microvascular endothelial cells (mvECs) and fibroblasts

2.1.1) Cut skin biopsy (preferably preputium) into strips of 2-3 mm width with scalpel and rinse them 3x with PBS⁻ solution.

2.1.2) Cover the tissue with dispase solution and incubate it for 16 to 18 h at 4°C.

2.1.3) Separate epidermis from dermis with 2 tweezers and transfer both separately into petri dishes filled with PBS⁺.

2.1.4) Rinse dermis strips 1x with Versene.

2.1.5) Add 10 ml Trypsin/EDTA solution to the dermis strips and incubate it in the incubator for 40 min.

2.1.6) Stop the enzyme reaction immediately with 1% FCS.

2.1.7) Transfer skin strips to a petri dish filled with VasuLife and scratch out each strip with the scalpel 8x each side, adding a little pressure.

2.1.8) Transfer the produced cell suspension via a cell strainer to a centrifuge tube and rinse cell strainer 3x with VasuLife.

2.1.9) Centrifuge the tube at 1200 U/min for 5 min and resuspend the cell pellet with VasuLife.

2.1.10) To isolate the fibroblasts, chop dermis strips into little pieces using the scalpel.

2.1.11) Add 10 ml of collagenase solution to dermis pieces.

2.1.12) Incubate it for 45 min in the incubator, then centrifuge it and carefully remove supernatant.

2.1.13) Wash pellet 1x with DMEM + 10% FCS + % PenStrep, centrifuge it and carefully remove supernatant.

2.1.14) Resuspend the pellet in culture medium and transfer it to a T75 culture flask to allow cells to grow out of the tissue.

2.2) Tumor cell line S462

The tumor cell line S462 (kindly provided by Dr. Nikola Holtkamp, Charité University Medicine Berlin) was generated from a malignant peripheral nerve sheath tumor of a female patient with the hereditary tumor predisposition syndrome neurofibromatosis type 1^{8,9}.

S462 are cultured in DMEM supplemented with 10% FCS. Medium has to be changed every 2-3 days. Once a week the cells have to be split.

3.) Tumor test system: static culture conditions compared with dynamic culture in bioreactor systems

3.1) Cut the tubular SIS-Muc open on one side and fix it between two metal rings (cell crowns) 10 mm diameter, self constructed. Cover the SIS-Muc in cell culture medium overnight.

3.2) Seed isolated cells in defined cell numbers (see below) on one or both sides of the SIS (mono- or co-culture set-up).

3.2.1) Seed 8,000 cells/cm² of primary mvECs in a total volume of 100 µl onto the basolateral surface of the SIS (former serosa). 3 hours later fill the well with medium to ensure a submersed culture.

3.2.2) Allow endothelial cells to adhere for 3 days. Flip the static culture system by 180° and transfer it to a 12-well plate.

3.2.3) Seed a mixture of primary dermal fibroblasts (8,000 cells/cm²) and tumor cells (15,000 cells/cm²) within a total volume of 500 µl on the apical surface of the SIS (the side of the former lumen).

3.2.4) Allow cells to adhere for 3 hours and fill the well with medium (submersed culture, medium: 50% Vasculife + 50% DMEM supplemented with 10% FCS).

3.2.5) The tumor test system is cultured under static conditions at 37°C, 5% CO₂ in the incubator for additional 14 days. Change culture medium every 2 - 3 days.

3.8) For the dynamic culture, fix the SIS-Muc between two metal rings and seed primary mvECs as described in 3.2.1. After 3 days remove the SIS-Muc from the metal rings and insert the membrane into the flow reactor. [\(see figure 2C/D\)](#). Apply the primary dermal fibroblasts and tumor cells with a syringe and cannula onto the matrix in the bioreactor, and allow the cells to adhere for 3 hours before filling the bioreactor system with culture medium.

3.9) On the following day dynamic culture conditions with constant medium flow (3.8 ml/ min, 37°C and 5% CO₂) can be initiated. The dynamic culture is maintained for 14 days, culture medium is changed after 7 days,

3.10) Another option is to leave the BioVaSc complete and reseed the preserved blood vessel structures with endothelial cells and fill the lumen of the scaffold with another cell type. In order to imitate the biological heartbeat of a human being, the bioreactor of the dynamic *in vitro* system is adjusted to *in vivo* conditions, such as the blood flow through our loop system with a peristaltic pump (500ml/min) or pulse rates from 60-180 beats/min. Further, the blood pressure is set to 80 to 120 ± 30 mmHg, with a standard deviation volume of 0 – 10 ml/stroke.

3.113.10) The dynamic test setup is cultured in a self-constructed incubator that provides media flow through a pump and the necessary temperature and CO₂ content.

4.) Characterization methods for analysis

4.1 Fixing and paraffin-embedding of the seeded collagenous matrix

4.1.1 For (immuno-) histological characterizations remove the culture medium and fix the tissue with 4% paraformaldehyde for 2 h.

4.1.2 Remove 4% paraformaldehyde and transfer the SIS from the metal insert to a tissue embedding cassette. Water the tissue to remove remaining fixative and dehydrate for paraffin infiltration.

4.1.3 Before embedding in a paraffin block, cut the SIS in 2 - 3 slices and place them in a paraffin-filled metal base mold so that the cut surfaces face downwards. Add the tissue

Formatted: English (U.K.)

cassette on top of the mold as a backing.

4.1.4 Cut 5 μm slices and float them on a 40°C water bath for ~~straighting~~straightening, then mount slides onto suitable glass slides. Uncoated slides are used for H&E-stains, polylysine-coated slides for immunohistological staining to improve attachment. Let slices dry thoroughly.

4.1.5 Melt paraffin, remove it with xylene and rehydrate slices for following staining.

4.2 Staining

4.2.1 The rehydrated slices can be stained with Hematoxylin/Eosin as a standardized overview staining.

4.2.2 For immunhistological staining, the fixed and paraffin-infiltrated tissue slices must undergo an antigen retrieval to allow antibodies to recognize and bind to their specific epitopes. Therefore, deparaffinized and rehydrated slides are placed in a steam cooker with heated citrate buffer (pH 6,0) for 20 min.

4.2.3 Transfer slides to washing buffer (0.5 M TBS buffer + 0.5% Tween) and circle slices with a PAP pen to minimize the required volume for staining solutions.

4.2.4 Place the slide in a moisture chamber. To secure a specific horseradish peroxidase-mediated visualization of antigen-antibody-binding, the endogenous peroxidase must be saturated with 3% hydrogen peroxide.

4.2.5 Primary antibody dilutions are applied to the slices, incubated for 1 h at RT and carefully washed off with washing buffer.

4.2.6 For detection of specific antigen-antibody bindings the Ultra Vision Quanto Detection System HRP DAB (Thermo Scientific) is used according to the recommended protocol.

4.2.7 Nuclei are counterstained with Hematoxylin for 1 min.

4.2.8 Slides are mounted with an aqueous medium, dried and imaged using an inverse microscope.

Representative Results:

As shown in figure 1B, we decellularized the porcine jejunal segment (about 2 m in length and 20 mm in diameter) with preserved tubular structures of the capillary network. After chemical, enzymatic and mechanical decellularization, we obtained a collagen I/ III scaffold, which can be used for 3D cell culture. A Feulgen test was performed to demonstrate the purity (no DNA remnants) of the matrix (data not shown).

Figure 2A and 2B show the static culture of SIS-Muc secured by the cell crowns. We fixed the SIS-Muc in an in-house designed bioreactor (Figure 2C) for dynamic culture. Figure 2D illustrates the simulated dynamic flow through the chamber of the bioreactor. The bioreactor is placed in a self-constructed incubator system and connected with a peristaltic pump. This setup allows a dynamic culture with either pressure-regulated pulsatile flow or constant flow.

Figure 3 gives an overview of the statically cultured S462 tumor cell line in 2D monoculture (figure 3A) and in 3D coculture (figure 3B-D). Figure 3B shows the triple culture of tumor cells S462 and primary fibroblasts on the apical side of SIS-Muc (former inner lumen side) and mvEC on the basolateral side (former serosa side). The identification of different cell types is possible by staining cell-type specific markers, such as von Willebrand factor to label mvEC (Figure 3Bfigure 3C). The p53-positive S462 cells can be distinguished from the p53-negative primary fibroblasts (Figure 3Cfigure 3D) and the 3D distribution of cells can be analyzed. Figure 4 shows staining's stainings equivalent to Figure 3 of the dynamically cultured triple culture.

Tables and Figures:

Figure 1: -DECELLULARIZATION SET-UP. (A) Bioreactor and pump set-up for decellularizing the BioVaSc, monitored by a PC. (B) Decellularized BioVaSc in glass tank. The lumen and the arterial inlet are connected to the adapters.

Figure 2: OVERVIEW OF THE DIFFERENT CULTURE SET-UPS. (A) CAD section view of static culture system in Microtiter well plate, (B) metal inserts for static culture, (C) medium flow simulation (velocity field [m/s]) for dynamic culture of dynamic culturethe upper lid of the flow bioreactor, (D) flow bioreactor for dynamic culture connected to the peristaltic pump.

Figure 3: OVERVIEW OF THE IMMUNOHISTOLOGICAL CHARACTERIZATION OF THE STATIC 3D TUMOR MODEL. (A) Hematoxylin stain of the statically cultured 2D mono culture of S462 cells on a permanox slide, (B) H&E stain of the statically cultured 3D triple culture, arrows mark endothelial cells, (B) immunohistological staining for von Willebrand factor, (C) immunohistological staining for von Willebrand factor, (D) immunohistological staining for p53.

Figure 4: OVERVIEW OF THE IMMUNOHISTOLOGICAL CHARACTERIZATION OF THE DYNAMIC 3D TUMOR MODEL. (A) H&E stain of the dynamically cultured 3D triple culture, arrows mark endothelial cells, (B) immunohistological staining for von Willebrand factor, (C) immunohistological staining for p53.

Discussion:

In the development of drugs, chemicals, cosmetics and in food testing, animal experiments are common, yet time consuming and inefficient. Furthermore, animal models can raise ethical questions. A strategy to avoid these problems is the development and establishment of new tissue models that mimic the conditions in biological microenvironments. Such *in vitro* systems offer a promising alternative orWhen comparing 2D and 3D culture systems in tumor research,

3D systems, despite being the more expensive approach, have proven to mimic the conditions in biological microenvironments better. It could be shown that some tumor cells grow much slower in a 3D culture than in a common 2D culture¹⁴, which is in accordance to the situation in a real tumor. Bissell and coworkers showed in their work that the behavior of carcinogenic breast cells reflects the *in vivo* situation, including cell morphology and signaling, more accurately when a 3D culture within a matrix offers cell-ECM interactions. Furthermore, they emphasized the importance of the extracellular environment in 3D by demonstrating that changes in the environmental interactions led to the reversion of the malignant cells to a normal phenotype. Additionally and most importantly, these outcomes could also be confirmed in *in vivo* animal models^{10,11}.

The direct comparison of *in vivo* animal experiments and *in vitro* tissue models reveals advantages and drawbacks in both systems. One advantage of *in vitro* models is the permission of a much better real-time or fixed imaging by microscopy. A limitation is that they mimic static or short-term conditions, whereas *in vivo* systems often progress. The current lack of vasculature and normal transport of small molecules, host immune responses, and other cell-cell interactions are further disadvantages of *in vitro* models¹². Therefore, 3D *in vitro* systems as presented in this study offer a promising addition to animal experiments. They provide a better comparability to the human organism and therefore minimize experimental misinterpretations. Commonly available 2D test systems do not reflect the Biomimetic *in vivo* situation adequately, because model systems will hence become more relevant to study how cancer and metastatic spread is dependent on microenvironmental conditions that regulate tumorigenesis¹¹.

Our study shows that the 3D environment provided by the SIS-Muc leads to a more tumor-like tissue formation of cells, which is not observed in the common 2D cell-cell contacts culture (see figure 3A). Moreover, the use of primary cells derived from tumor biopsies is a very important step towards personalized medicine, a discipline that aims at identifying the best treatment depending on a patient's individual needs. Incorporating primary patient-specific tumor cells isolated from biopsy material will allow *in vitro* testing of therapeutic strategies. Such test systems will make it possible to investigate different drugs and combinations thereof in a time- and cost-saving high-throughput screening. Additionally, the integration of tumor-associated stromal cells as well shown in this study is important for the personalized approach, since a tumor's microenvironment influences tumor progression¹³ and might prove as cell-suitable therapeutic target.

Alternatively to a personalized approach, our tumor model can be modified to serve as a generalized tumor test system by the incorporation of established tumorigenic cell lines. This is a promising adaptation for basic research purposes. For both drug testing approaches the presence of a vascular structure is required to test the distribution and uptake of therapeutic

substances. The SIS-Muc matrix ~~contacts is severely restricted~~^{9,10} — allows the basolateral seeding with primary mvEC for barrier uptake studies, the reseeding of the preserved vascular structures of the BioVaSc will further improve the study of drug delivery.

In order to create tissue models, a 3D biodegradable matrix can be used as framework for a co-culture of different cell ~~types~~¹¹ ~~types~~¹⁴. The use of such 3D matrices is often limited by the absence of a functional vascularization. This problem ~~could~~can be solved by the use of the BioVaSc, which offers preserved blood vessel structures, which can be reseeded with endothelial cells. Furthermore, the BioVaSc provides extracellular components, which ensure the adhesion of the cells and facilitate tissue differentiation. It also enables the long-time tissue specific function of bioartificial 3D ~~tissues~~^{5,7,12}.

tissues^{7,8,15}. The prerequisite for the engineering of functional vascular substitutes is the mimicking of human physiological and biomechanical conditions. Therefore, bioreactor systems, which can implement these requirements *in vitro*, are of extreme interest. ~~The properties of the constructs should be analysed and compared to other vascular grafts available as well as to native human tissue for creating biological tumor models.~~

The combination of the BioVaSc, the bioreactor technology and co-culturing of different cell-types is a very promising method to generate ~~functionalized~~-vascularized ~~tissue~~. ~~These methods can be useful in the creation of test systemstumor tissues~~, which ~~not only serve~~will allow the study of mechanisms relevant for cancer progression such as angiogenesis and metastasis. We see such tumor models as a ~~replacement of promising approach for complementing animal models, but also are more closely~~studies by providing an equivalent to the ~~situation in the human body.~~

~~In our study, it was clearly shown that the 3D environment provided by the SIS-Muc leads to a more tumor-like tissue formation of cultured cells than the common 2D cell culture. Moreover, the use of primary tumor cells of individual cancer patients is a very important step that can be done in the field of personalized medicine, a discipline that aims at identifying the best treatment depending on the individual needs of a patient. This could avoid ineffective treatments with unnecessary side effects and could save life saving time in determining the best treatment for patienttumor physiology.~~

Acknowledgments:

The authors would like to thank Jan Hansmann (Fraunhofer IGB, Stuttgart) for his technical support to develop bioreactors and the bioreactor incubator.

Disclosures: Authors have nothing to disclose.

Formatted: English (U.S.)

Formatted: Justified

Formatted: Font: Not Italic, English (U.S.)

Formatted: English (U.S.)

Formatted: Line spacing: Multiple 1.15 li

Formatted: English (U.S.)

Table of specific reagents and equipment:

Name of the reagent	Company	Catalogue number	Comments (optional)
Collagenase solution	SERVA	17454	(500 U/ml)
Dispase solution	Gibco	17105-041	(2,0 U/ml)
DMEM, high-glucose	PAA	G0001,3010	
DNase	ROCHE	10104159001	200 mg solved in 500 ml PBS ⁺ + 1% PenStrep
DZ solution	Roth	3484.2	34 g Sodium Desoxychelate , in 1 l Ultra-pure water
FCS	LONZA	DE14-801F	
IHC-Kit DCS SuperVision 2 HRP	DCS	PD000KIT	
medical pressure transducer	MEMSCAP	SP844	
monoclonal mouse anti-human Von Willebrand Factor	DAKO Cytomation	M0616	Clone F8/86 0,12 µg/ml
mouse monoclonal anti-human p53	DAKO Cytomation	IS616	Clone DO-7 ready-to-use
peristaltic pump	Ismatec		
sterile disposable dome	MEMSCAP	844-28	
Trypsin / EDTA solution	PAA	L11-003	0,05%
VascuLife (VEGF-Mv)	Lifeline	LL-0003	
Versene	Gibco	15040-033	

|

References

1. Schenke-Layland, K., Nerem, R. M. In vitro human tissue models--moving towards personalized regenerative medicine, *Adv. Drug Deliv. Rev.* **63**, 195–196 (2011).
- ~~2. Lanza, R., Langer, R., 2. Pusch, J., Votteler, M. et al. The physiological performance of a three-dimensional model that mimics the microenvironment of the small intestine, *Biomaterials* **32**, 7469–7478 (2011).~~
3. Schanz, J., Pusch, J., Hansmann, J., Walles, H. Vascularised human tissue models: a new approach for the refinement of biomedical research, *J. Biotechnol.* **148**, 56–63 (2010).
4. Lanza, R., Langer, R., Vacanti, J. *Principles of tissue engineering*. 3rd ed. (Elsevier Academic Press, Burlington, MA, 2007).
- ~~35. Barron, V., Lyons, E., Stenson-Cox, C., McHugh, P. E., Pandit, A. Bioreactors for cardiovascular cell and tissue growth: a review, *Ann Biomed Eng* **31**, 1017–1030 (2003).~~
- ~~46. Martin, I., Wendt, D., Heberer, M. The role of bioreactors in tissue engineering, *Trends Biotechnol.* **22**, 80–86 (2004).~~
- ~~57. Mertsching, H., Walles, T., Hofmann, M., Schanz, J., Knapp, W. H. Engineering of a vascularized scaffold for artificial tissue and organ generation, *Biomaterials* **26**, 6610–6617 (2005).~~
- ~~68. Schanz, J., Pusch, J., Hansmann, J., Walles, H. Vascularised human tissue models: a new approach for the refinement of biomedical research, *J. Biotechnol.* **148**, 56–63 (2010).~~
- ~~7. Linke, K., Schanz, J., Hansmann, J., Walles, T., Brunner, H., Mertsching, H. Engineered liver-like tissue on a capillarized matrix for applied research, *Tissue Eng.* **13**, 2699–2707 (2007).~~
- ~~89. Holtkamp, N., Atallah, I. et al. MMP-13 and p53 in the progression of malignant peripheral nerve sheath tumors, *Neoplasia* **9**, 671–677 (2007).~~
- ~~910. Weaver, V. M., Petersen, O. W. et al. Reversion of the malignant phenotype of human breast cells in three-dimensional culture and in vivo by integrin blocking antibodies, *J. Cell Biol.* **137**, 231–245 (1997).~~
- ~~10. Walles, T., Weimer, 11. M., Linke, K., Michaelis, J., Mertsching, H. The Potential of Bioartificial Tissues in Oncology Research and Treatment, *Onkologie* **30**, 388–394 (2007).~~

Formatted: German (Germany)

- Hutmacher, D. W., Horch, R. E. *et al.* Translating tissue engineering technology platforms into cancer research, *J. Cell. Mol. Med.* **13**, 1417–1427 (2009).
12. Yamada, K. M., Cukierman, E. Modeling tissue morphogenesis and cancer in 3D, *Cell* **130**, 601–610 (2007).
13. Hanahan, D., Weinberg, R. A. Hallmarks of cancer: the next generation, *Cell* **144**, 646–674 (2011).
14. ~~11~~ Yang, S.-T., Zhang, X., Wen, Y. ~~7~~ Microbioreactors for high-throughput cytotoxicity assays, *Curr Opin Drug Discov Devel* **11**, 111–127 (2008).
15. Schultheiss, D., Gabouev, A. I. *et al.* Biological vascularized matrix for bladder tissue engineering: matrix preparation, reseeding technique and short-term implantation in a porcine model, *J. Urol.* **173**, 276–280 (2005).

Formatted: German (Germany)