

# Journal of Visualized Experiments

## Implantation of the Syncardia Total Artificial Heart

--Manuscript Draft--

<b>Manuscript Number:</b>	JoVE50377R1
<b>Full Title:</b>	Implantation of the Syncardia Total Artificial Heart
<b>Article Type:</b>	Methods Article - JoVE Produced Video
<b>Corresponding Author:</b>	Daniel Tang, MD Virginia Commonwealth University Richmond, VA UNITED STATES
<b>Corresponding Author Secondary Information:</b>	
<b>Corresponding Author's Institution:</b>	Virginia Commonwealth University
<b>Corresponding Author's Secondary Institution:</b>	
<b>First Author:</b>	Daniel Tang, MD
<b>First Author Secondary Information:</b>	
<b>Order of Authors Secondary Information:</b>	
<b>Abstract:</b>	<p>With advances in technology, the use of mechanical circulatory support devices for end stage heart failure has rapidly increased. The vast majority of such patients are generally well served by left ventricular assist devices (LVADs). However, there is a subset of patients with late stage biventricular failure or other anatomic lesions that are not adequately treated by isolated left ventricular mechanical support. These patients often present in extremis with cardiogenic shock and multi system organ dysfunction. Excision of both ventricles and orthotopic replacement with a total artificial heart (TAH) is an effective, albeit extreme, therapy for rapid restoration of blood flow and resuscitation without the toxicity of high dose inotropic medications. The TAH also provides effective treatment for heart failure patients with other severe concomitant cardiac pathology that would otherwise require extensive surgery beyond an LVAD. This includes: post infarction ventricular septal defect; aortic root aneurysm / dissection, cardiac allograft failure, massive ventricular thrombus, refractory malignant arrhythmias (independent of filling pressures), hypertrophic / restrictive cardiomyopathy, and complex congenital heart disease. Perioperative management is focused on end organ resuscitation and physical rehabilitation. In addition to the usual concerns of infection, bleeding, and thromboembolism common to all mechanically supported patients, TAH patients face unique risks with regard to renal failure and anemia. Until recently, TAH patients were confined as inpatients tethered to a 500 lb pneumatic console driver. Recent introduction of a backpack sized portable driver (currently under clinical trial) has enabled patients to be discharged home and even return to work. Despite the profound presentation of these sick patients, there is a 79-87% success in bridge to transplantation.</p>
<b>Corresponding Author E-Mail:</b>	dtang@mcvh-vcu.edu
<b>Order of Authors:</b>	Daniel Tang, MD
	Keyur B. Shah, MD
	Micheal L. Hess, MD
	Vigneshwar B. Kasirajan, MD
<b>Author Comments:</b>	



V i r g i n i a C o m m o n w e a l t h U n i v e r s i t y

# Medical Center

In the tradition of the Medical College of Virginia

## MCV Campus

### Division of Cardiothoracic Surgery

West Hospital, 7<sup>th</sup> Floor South  
1200 East Broad Street  
P.O. Box 980068  
Richmond, Virginia 23298-0068

804 828-2775  
Fax: 804 628-0537  
TDD: 1-800-828-1120

10 Sept 2012

Angela Messmer-Blust, Ph.D.  
Science Editor, Clinical and Translational Medicine  
Journal of Visualized Experiments (JoVE)  
17 Sellers St., Cambridge, MA 02139  
tel. [617.444.9406](tel:617.444.9406) (direct) | [angela.messmer-blust@jove.com](mailto:angela.messmer-blust@jove.com)

**Daniel Tang, MD**  
Assistant Professor of Surgery  
804-828-2775

Dear Dr. Messmer-Blust:

Thank you very much for the kind invitation to submit this manuscript “Implantation of the Syncardia Total Artificial Heart.” The manuscript has not been published previously and all authors are in agreement with the content of the manuscript. The figures remain a work in progress, but we anticipate use of images from the implant. We also have an illustrator assisting with diagrams. We do not currently have a patient implant scheduled although we do have a couple of potential patients. The patient case presented (our last implant) will also change depending on the patient implanted.

Sincerely,

Daniel G. Tang, MD  
Asst. Professor Surgery  
Division of Cardiothoracic Surgery  
VCU Medical Center / MCVH  
1200 E. Broad St  
West Hospital, 7<sup>th</sup> Fl, South  
Richmond, VA 23298-0068  
804-828-9168  
804-628-0537 (fax)

**TITLE:** Implantation of the Syncardia Total Artificial Heart

**Authors:** Daniel G. Tang, Keyur B. Shah, Vigneshwar Kasirajan

**Authors: institution(s)/affiliation(s) for each author:**

1. Daniel G. Tang, MD  
Division of Cardiothoracic Surgery  
Virginia Commonwealth University  
[dtang@mcvh-vcu.edu](mailto:dtang@mcvh-vcu.edu)
2. Keyur B. Shah, MD  
Division of Cardiology  
Virginia Commonwealth University  
[kshah@mcvh-vcu.edu](mailto:kshah@mcvh-vcu.edu)
3. Micheal L. Hess, MD  
Division of Cardiology  
Virginia Commonwealth University  
[mhess@mcvh-vcu.edu](mailto:mhess@mcvh-vcu.edu)
4. Vigneshwar Kasirajan, MD  
Division of Cardiothoracic Surgery  
Virginia Commonwealth University  
[vkasiraj@mcvh-vcu.edu](mailto:vkasiraj@mcvh-vcu.edu)

**Corresponding author:** Daniel G. Tang

**Keywords:** mechanical circulatory support, total artificial heart, biventricular failure, operative techniques

**Short Abstract:** The purpose of this manuscript is to briefly review indications, management, and outcomes for the total artificial heart. Video operative techniques for device implantation are presented.

**Long Abstract:**

With advances in technology, the use of mechanical circulatory support devices for end stage heart failure has rapidly increased. The vast majority of such patients are generally well served by left ventricular assist devices (LVADs). However, a subset of patients with late stage biventricular failure or other significant anatomic lesions are not adequately treated by isolated left ventricular mechanical support. Examples of concomitant cardiac pathology that may be better treated by resection and TAH replacement includes: post infarction ventricular septal defect; aortic root aneurysm / dissection, cardiac allograft failure, massive ventricular thrombus, refractory malignant arrhythmias (independent of filling pressures), hypertrophic /

restrictive cardiomyopathy, and complex congenital heart disease. Patients often present with cardiogenic shock and multi system organ dysfunction. Excision of both ventricles and orthotopic replacement with a total artificial heart (TAH) is an effective, albeit extreme, therapy for rapid restoration of blood flow and resuscitation. Perioperative management is focused on end organ resuscitation and physical rehabilitation. In addition to the usual concerns of infection, bleeding, and thromboembolism common to all mechanically supported patients, TAH patients face unique risks with regard to renal failure and anemia. Supplementation of the abrupt decrease in brain natriuretic peptide following ventriculectomy appears to have protective renal effects. Anemia following TAH implantation can be profound and persistent. Nonetheless, the anemia is generally well tolerated and transfusion are limited to avoid HLA sensitization. Until recently, TAH patients were confined as inpatients tethered to a 500 lb pneumatic console driver. Recent introduction of a backpack sized portable driver (currently under clinical trial) has enabled patients to be discharged home and even return to work. Despite the profound presentation of these sick patients, there is a 79-87% success in bridge to transplantation.

## **Introduction**

The first human implantation of a total artificial heart (TAH) in 1969 was performed by Denton Cooley in a 47 year old male who was unable to wean from cardiopulmonary bypass following left ventricular aneurysm repair. The experimental device provided hemodynamic support for 64 hours until a donor heart could be found. Although technically successful, device support was complicated by hemolysis and renal failure. The patient would go on to die from overwhelming sepsis 32 hours after transplantation. (1) A second attempt by Cooley in 1981 had similar unfortunate results. (2) In 1982, William DeVries performed the widely publicized permanent first implant of the Jarvik-7 TAH into a 61 year old dentist. The patient had a difficult postoperative course marked by recurrent respiratory failure, fracture of the prosthetic mitral valve strut requiring replacement of device, sepsis, stroke, intermittent renal failure, and bleeding related to anticoagulation. He ultimately succumbed after 112 days to pseudomembranous colitis. (3)

Despite these initial discouraging results, progressive refinement in device design, patient selection, and patient management have led to marked improvement in outcomes. The Jarvik-7 has since evolved into the Syncardia TAH, which remains the only FDA approved TAH in clinical use today. To date, over 1000 implants have been performed worldwide. (4)

We present our institutional operative techniques in the context of a video case report.

## **Case Presentation: (sample patient previously implanted)**

A 46 year old male with progressive heart failure from long standing hypertrophic cardiomyopathy was evaluated and listed for heart transplantation. With recurrent hospitalizations for heart failure, difficult to control edema and the development of wheel-chair dependent exercise intolerance, he was referred for evaluation of mechanical circulatory

support as a bridge to heart transplantation. His medical history was notable for atrial fibrillation, internal defibrillator implantation with numerous ICD discharges, worsening renal insufficiency, hypothyroidism, and hyperlipidemia. His family history was notable sudden death of his father, paternal uncle and paternal aunt. Diagnostic studies were notable for a diffusely hypertrophic heart with a small left ventricular cavity and no LV outflow tract obstruction. Due to his ventricular anatomy, he was considered a poor candidate for an implantable left ventricular assist device.

#### **Protocol:**

#### **1. The device**

- 1.1 The Syncardia total artificial heart (Syncardia Systems, Inc, Tucson, AZ, USA) is the only FDA approved TAH in clinical use. It was first introduced in 1982 as the Jarvik-7 heart.
- 1.2 The device consists of 2 polyurethane ventricle chambers. Each chamber has a maximum stroke volume of ~ 70 ml. Each chamber has 2 tilting disc valves (Medtronic Hall, 27 mm inflow, 25 mm outflow) to direct blood inflow and outflow. Each chamber is pneumatically driven by a separate driveline connected to a driver externally. (Figure 1)

#### **2. Indications**

- 2.1 The device displaces a total volume of ~ 400 ml. General minimum recipient size recommendation include a BSA > 1.7 m<sup>2</sup> and a thoracic diameter (AP dimension spine to sternum at the level of the 10<sup>th</sup> thoracic vertebra) > 10 cm. (Figure 2) Placement in smaller patients is possible by displacing the device into the left chest although this increases the risk for left sided pulmonary vein and bronchus compression. A smaller sized device for use in smaller patients is being developed and is expected in the near future.
- 2.2 TAH support is indicated in patients with late stage severe biventricular failure or other anatomic abnormality that is not optimally treated with isolated left ventricular mechanical support. Such patients often present in extremis with complications related to their malperfusion. Typically patients are classified as INTERMACS (Interagency Registry for Mechanically Assisted Circulatory Support) profile 1 (critical cardiogenic shock) or 2 (progressive decline on inotropic support).
- 2.3 Patients with significant concomitant cardiac pathology. Critically ill patients with end stage heart failure requiring mechanical support may not be optimally treated by the addition of other extensive reparative procedures. This may increase the risk for right ventricular failure post LVAD implantation, which increases the risk for perioperative morbidity and mortality. This includes: acute myocardial infarction with ventricular septal defect; aortic root aneurysm / dissection, cardiac allograft failure, massive ventricular thrombus, refractory malignant arrhythmias (independent of filling pressures), hypertrophic / restrictive cardiomyopathy, and complex congenital heart disease.

#### **3. Preparation of the device**

3.1 The Dacron aortic and pulmonary grafts are sealed with CoSeal Surgical Sealant (Baxter, Deerfield, IL, USA). (Figure 3)

3.2 The grafts and devices are soaked in rifampin

#### 4. Implantation

4.1 Routine preparation and median sternotomy. The chest and abdomen are prepped in the routine fashion for cardiac surgery and a median sternotomy is performed.

4.2 Division of the left diaphragm and creation of a left upper abdominal preperitoneal pocket. Similar to the implant of an LVAD, the left diaphragm is divided medially and a left upper abdominal preperitoneal pocket is created for the pneumatic drivelines. Two incisions ~5-10 cm below the left costal margin are made and carried through the rectus fascia. Intramuscular tunnels for the pneumatic drivelines are created and maintained with two 1" Penrose drains.

4.3 Cannulation and initiation of cardiopulmonary bypass. The aorta, SVC, and IVC are cannulated. Bicaval cannulation is performed through the atria (vs direct cannulation of the SVC/IVC) to preserve the sites for use during subsequent transplantation. Unnecessary dissection within the pericardium is minimized to preserve tissue planes.

4.4 The aorta is cross clamped. The aortic root and pulmonary artery are divided at the level of the valvar commissures. Excision of the right ventricle is started along the acute margin, 1-2 cm distal to and parallel to the right atrioventricular groove. The interventricular septum is incised opening the left ventricle. The right ventricular incision is continued superiorly into the RV outflow tract. Similarly, the left ventricle incision is extended laterally parallel to the left atrioventricular groove. The LV outflow tract is opened laterally. The remaining interventricular septum is divided and specimen is removed. (Figure 4)

4.5 The coronary sinus is oversewn. If a PFO is identified it is similarly oversewn. The left atrial appendage is ligated with a non cutting endoscopic stapler to eliminate a potential source of thrombus. (Figure 5/6)

4.6 The mitral and tricuspid valve leaflets are excised leaving a several millimeter cuff to the annulus. The ventricular cuffs are trimmed leaving a 1 cm rim of tissue. The cuffs are then oversewn with 2-0 Prolene (MH) for hemostasis and to downsize the orifice to the size of the TAH atrial quick connects. Some centers elect to use a reinforcing strip of felt.

4.7 The cuffs of the TAH atrial quick connects are trimmed to 0.5-1 cm. The cuffs are then inverted and sewn to their respective left and right ventricular cuffs.

4.8 In a similar fashion, the aortic and pulmonary artery graft quick connects are trimmed. The pulmonic graft is left several centimeters longer than the aortic graft to allow room for the aortic graft to pass below. The grafts are sewn to their respective orifices. (Figure 7)

- 4.9 At the time of subsequent re-entry for transplantation, an intense inflammatory response of the pericardium is often seen. Dissection through this tissue at the time of transplantation can be associated with significant blood loss. This appears to be greater than what is typically seen during redo sternotomy. Goretex Preclude pericardial membrane (Gore, Flagstaff, AZ, USA) is used to line the pericardium and maintain avascular tissue planes. This is started along the left inferolateral pericardium as access to this space will be hindered once the device is in place. Strips of Preclude are also placed around the aortic and pulmonic anastomoses. Some centers use sterilized rubber tourniquets to wrap the anastomoses.
- 4.10 The drivelines are passed through the previously created tunnels. A 13-15 mm Hegar dilator is used to guide the driveline through the previously placed Penrose drain. A sheet of Preclude membrane is wrapped around the drivelines as well. The original metal connectors of the external console driveline are replaced with plastic connectors that will also connect with the portable discharge driver.
- 4.11 De-airing nipples on the TAH left and right ventricles are ligated. The left and then right artificial ventricles are flushed and then connected to their respective orifices. The pliable quick connects are grasped with 2 heavy needle drivers and stretched over the hard plastic connectors of the artificial ventricles ensuring a tight connection. (Figure 8)
- 4.12 An aortic root vent is placed. Low rate, low pressure pumping is initiated (Left drive pressure 40, right drive pressure 0, % systole 40, rate 40, vacuum 0) and the lungs are ventilated for de-airing. Flow through the right side is initially passive.
- 4.13 The cross clamp is removed. Once adequate de-airing is confirmed by TEE, cardiopulmonary bypass can be discontinued relatively quickly. TAH support is increased. Typical initial immediate TAH parameters are: Left drive pressure 180-200 mmHg, right drive pressure 30-60 mmHg, HR 100-120 bpm, and % systole 50. Vacuum is generally left at 0 until the chest is closed (or sealed) to prevent entrainment of air. Once sealed, increases in vacuum (generally to 15 mmHg) will result in increased fill volume and increased cardiac output. Parameters are then titrated for partial ventricular filling and complete ejection.
- 4.14 Protamine is given and the CPB cannulas are removed. Patients requiring a TAH often present with significant end organ dysfunction including chronic hepatic congestion and may have significant associated underlying coagulopathy. The most common complication following TAH implantation is bleeding. We recommend a low threshold for mediastinal packing and delayed sternal closure.
- 4.15 Once the chest is ready to be closed, the remainder of the pericardium along the right and superiorly is lined with Goretex Preclude. The configuration of the TAH does not maintain the normal oblong shape. Contraction of the pericardium about the device will limit the space available for subsequent transplantation. A saline breast implant is used to

maintain the apical pericardial space for subsequent transplant. A smooth saline breast implant (Mentor, Santa Barbara, CA, USA) is placed at the apex and filled with 200-250 ml of saline. (Figure 11)

- 4.16 The chest is closed in the routine fashion. Although imaging by intraoperative TEE is limited, it remains a useful tool at the end of surgery to assess for compression of the right and left atrial venous return by the device during closure. This is more common on the right (both the cava and right sided pulmonary veins) and can generally be treated with displacement of the device inferiorly and to the left. This can be secured with a heavy suture placed around the costal margin and tied to the artificial right ventricle. A strip of silastic is left beneath the sternum to protect the pump during re-entry for transplantation.
- 4.17 Often patients present with edematous poorly perfused tissues related to cardiogenic shock. Due to concerns regarding wound healing and the risk for infection, the closed skin incision is reinforced with a wound vac.

#### **Outcome/Representative Results:**

From April 2006 thru July 2012, 66 patients were implanted with a TAH at Virginia Commonwealth University Medical Center. Patients were critically ill: 18% were on other mechanical support (ECMO, LVAD, or BiVAD), 58% were on an intra-aortic balloon pump, 58% were on inotropic medications, 17% were mechanically ventilated, and 17% were on hemodialysis. Patients were supported for a total of 7863 days. Median duration of support was 87.5 days (range 1 to 602 days). 10 patients were discharged home on a portable discharge driver (as part of a clinical trial, not FDA approved). 50 (76%) patients were successfully bridged to transplantation, 7 (11%) remained on the device awaiting transplantation, and 9 (14%) died while on the device. (Figure 12) 3 of the deaths occurred in the 1<sup>st</sup> week following implantation and were related to progressive multisystem organ failure. The other 6 deaths occurred from 32 to 169 days post implant (3 sepsis / MSOF, 1 mediastinal bleeding, 1 intracranial hemorrhage, and 1 hypertensive crisis). The most frequent perioperative adverse event was bleeding requiring mediastinal re-exploration in 30%.

#### **Discussion:**

Artificial replacement of the human heart has long captured the public's imagination. Early experience with the total artificial heart was marked by suboptimal outcomes. (1-3) The design and implantation techniques for the TAH used today have not changed significantly since Dr. DeVries' original description. (6) However, refinements in patient selection (as a bridge to transplant) and understanding of perioperative management have led to significant improvement in outcomes. In 2004, a landmark study of 81 TAH implants was published. The trial established the efficacy of the TAH as a bridge to transplantation and led to FDA approval of the Syncardia TAH. In this nonrandomized study, 79% were successfully bridged to transplantation. Overall survival at 1 year was 70%. In a matched cohort of 35 patients who met study criteria but did not undergo TAH implantation, 46% survived to transplantation and 1 year survival was 31%. (7)



Patient selection is critical to good outcomes. (8,9) It is important to identify patients that have not yet developed irreversible end organ failure or other complications which would limit their likelihood for resuscitation or transplant candidacy. At our institution, findings of cirrhosis by liver biopsy, chronic dialysis dependency, or other psychosocial factors that would preclude transplant candidacy would also preclude candidacy for a TAH. Conversely, patients with acute decompensation or other evidence for potential end organ recovery are considered.

It is equally important to identify patients with biventricular failure whose right ventricular (RV) dysfunction will improve with isolated LV unloading and thus do not need biventricular circulatory support. RV failure following LVAD implantation is associated with increased morbidity and mortality. (10) Early use of biventricular support compared to delayed rescue for RV failure following LVAD is also associated with improved outcomes.(11) A number of risk factors for RV failure have been identified and several risk scoring systems have been developed. The need for inotropic / intra-aortic balloon pump support, evidence of renal and hepatic dysfunction (elevated creatinine, aspartate aminotransferase, bilirubin), hemodynamic evidence of RV dysfunction (decreased RV stroke work index, increased right atrial / wedge pressures), and echocardiographic evidence of RV dysfunction (RV dilatation, decreased RV ejection fraction / tricuspid annular motion, increased tricuspid regurgitation) have all been identified as risk factors.(12-15) Nonetheless, determination of risk for RV failure after LVAD placement remains difficult. One recent small series demonstrated no predictive value from several of the scoring systems in predicting the need for RV support. (16)

Timing of surgery is an important consideration. Once the decision has been made that biventricular mechanical support is necessary, early implantation offers the most effective way to restore blood flow and resuscitate a patient. However, patients can present abruptly with profound acute cardiogenic shock, severe malperfusion, and minimal prior evaluation. Liberal use of temporary support options (such as ECMO / IABP) for 24-48 hrs can start the process of resuscitation while questions regarding neurologic status or other questions of transplant candidacy are being answered. Prolonged use of high dose inotropic support may increase the risk for irreversible end organ failure or other complications.

The general techniques of implantation have not changed dramatically since the device was first introduced. (6, 17) However, the benefits of taking the time to protect and maintain the pericardial space should be emphasized. (18) The device appears to incite an intense inflammatory thickening of the pericardium. Lining the pericardium with Goretex and maintaining the apical space with a saline implant greatly facilitates the re-entry for transplantation. Perioperative bleeding remains the most frequent perioperative complication. Packing the chest with delayed sternal closure is an effective strategy to limit the amount of perioperative blood products needed to reverse underlying coagulopathy and minimize the risk for tamponade. Despite the relatively rigid shell of the artificial ventricles it is possible for enough mediastinal fluid to accumulate and impede venous inflow causing tamponade. Surface echocardiography following TAH implantation has limited utility. CT imaging is often limited by underlying renal dysfunction and need to avoid IV contrast. We

recommend early mediastinal re-exploration in any TAH patient who is otherwise doing poorly for unknown reasons.

Following implantation, the device is adjusted to maximize cardiac output. It is capable of generating an output > 9 lpm. To minimize stasis, device parameters are adjusted for “partial filling and complete eject.” Typical early postoperative TAH parameters are: Left drive pressure 180-200 mmHg, right drive pressure 30-60 mmHg, HR 100-120 bpm, % systole 50, and vacuum 15 mmHg. In patients with long standing pulmonary hypertension, the higher RV drive pressures required for full right sided ejection may be detrimental. It is possible to “overdrive” the right sided output. In 2 patients, this resulted in profound pulmonary edema requiring temporary venovenous ECMO support. One patient had progressive multisystem organ failure and expired. The other was supported until the edema subsided and was successfully weaned off of ECMO.

Anticoagulation is generally initiated 24 hrs after chest closure. Patients are started on bivalirudin (0.005 mg/kg/h), aspirin (81 mg daily), and dipyridamole (50 mg tid). Outside of the operating room, heparin is avoided to minimize the risk of heparin induced thrombocytopenia. Bivalirudin is generally not titrated and once stable transitioned to oral warfarin. Goals of therapy are an INR 2-3 and platelet function 20-40% normal by optical aggregometry. Patients with evidence of increased hemolysis (LDH > 1000) may benefit from the addition of pentoxifylline (400 mg TID). (19,20)

Renal failure in acutely ill patients is clearly multifactorial. However, we have noticed a disproportionate tendency towards renal failure following TAH implantation. We hypothesize that this is in part related to the abrupt decrease in native natriuretic peptide production associated with ventricular excision. Perioperative supplementation with a low dose nesiritide infusion (0.005 mcg/kg/min) appears to reduce the incidence of renal failure. (21) Furthermore, infusion of nesiritide has a profound effect for increasing urine output after TAH implantation. (22) Once patients have recovered we have been able to discontinue the infusion in most patients. However, we have had a few patients who could not be weaned from the infusion until they were transplanted.

TAH patients often demonstrate significant chronic anemia. Causes include low grade hemolysis and ineffective erythropoiesis. Despite the anemia, TAH patients demonstrate good exertional tolerance and minimal symptoms even with hemoglobin concentrations of 5-6 g/dL. In order to avoid HLA sensitization and other associated complications, transfusions are avoided unless the patient is symptomatic or there are other signs of end organ malperfusion. (23)

Beyond the early postoperative period, care is focused on aggressive physical rehabilitation. Despite the severe presentation, the majority of patients were able to initiate physical therapy in the first postoperative week and most were able to start treadmill exercise by the second week. However, we have found that TAH patients demonstrate an abnormal blunting of the blood pressure response to exercise. This is in part related to the use of vasodilators to limit

afterload. (24) While this could limit the amount of physical recovery, most patients go on to transplant before this is reached.

Until recently, TAH patients were hospital bound and tethered to a 418 lb console. As waiting times for donor organs continue to increase, this was accompanied by significantly reduced quality of life as well as increased financial costs. The introduction of a portable driver allowing discharge to home and even returning to work has been a major advance in the practical utility of the TAH. The Syncardia Freedom Driver (under clinical trial and not FDA approved) is a 14 lb, backpack sized driver with an electrically driven pneumatic piston. (25) Early experience with the driver has demonstrated that it is sensitive to afterload conditions and that an aggressive anti hypertensive drug regimen is necessary. (26)

In summary, current results have established the TAH as an effective device for resuscitation and subsequent bridge to transplantation. This cohort of patients represents an extreme end of the spectrum of end stage heart failure patients. Often there is no other suitable durable therapeutic option.

#### **Tables and Figures (Required):**

Figure 1. The Syncardia total artificial heart. The device components (left and right artificial ventricles, atrial quick connects, aortic and pulmonary vascular grafts) on the OR back table. (will obtain actual figure during implant)

Figure 2. Measuring AP dimension by CT. A space > 10 cm between the sternum and the anterior border of the 10<sup>th</sup> vertebral body is generally required for the device to fit.

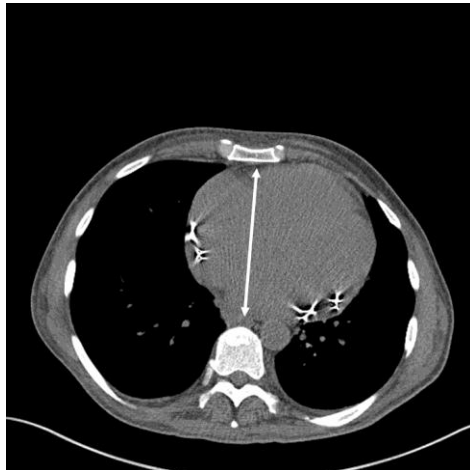


Figure 3. Pretreating the arterial outflow grafts. The aortic and pulmonary artery Dacron grafts are presealed with Coseal Surgical Sealant (Baxter), a synthetic hydrogel used as an adjunctive sealant for vascular grafts. Previously the grafts were preclotted with patient's own blood prior to heparinization. (will obtain photo during implant)

Figure 4. Excision of the right and left ventricle. A 1 cm ventricular cuff beyond the mitral and tricuspid annulus is left. The incisions are extended through the left and right ventricular outflow tracts to the aortic and pulmonic valves. (will obtain matching Intraoperative photo)

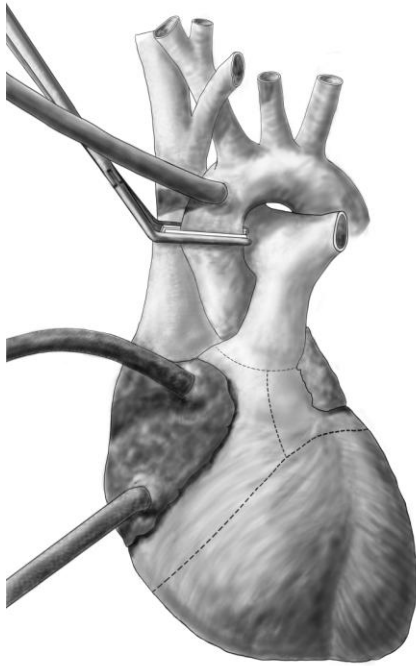


Figure 5. Oversewing the coronary sinus. The coronary sinus is oversewn for hemostasis. (will obtain picture during implant)

Figure 6. Ligating atrial appendage. The left atrial appendage is ligated to minimize a potential source of systemic emboli. (will obtain picture during implant)

Figure 7 Quick connects and Goretex Preclude implanted. The atrial quick connects and vascular grafts are sewn to their respective orifices. The pericardium is lined with Goretex membrane to facilitate subsequent reentry for transplantation.

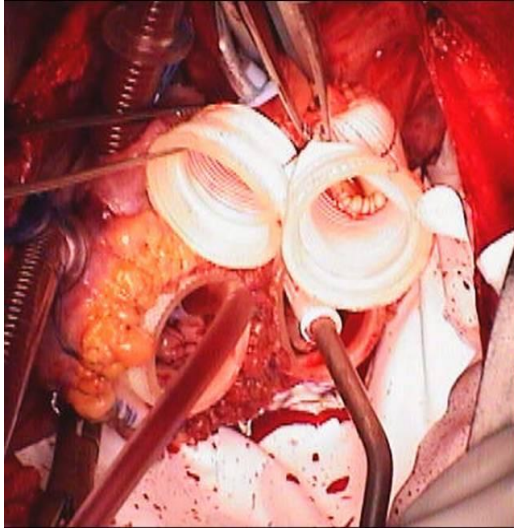


Figure 8. Device implanted and packed for sternal closure (to be obtained during implant). The chest is packed for delayed sternal closure. (a) The device implanted just prior to chest closure. (b)

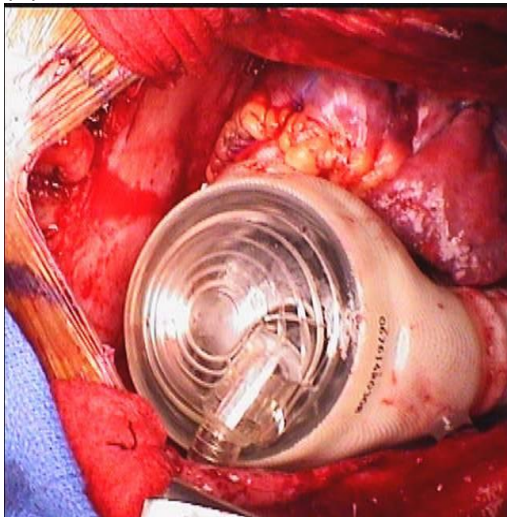


Figure 9: Pericardial apical saline implant as demonstrated on CT imaging and CXR. A saline implant (single arrows) is used to maintain the pericardial apical space for transplantation. In the CXR, the edge of the TAH (where the pericardium would otherwise contract) is delineated by the central air bubble (double arrows).

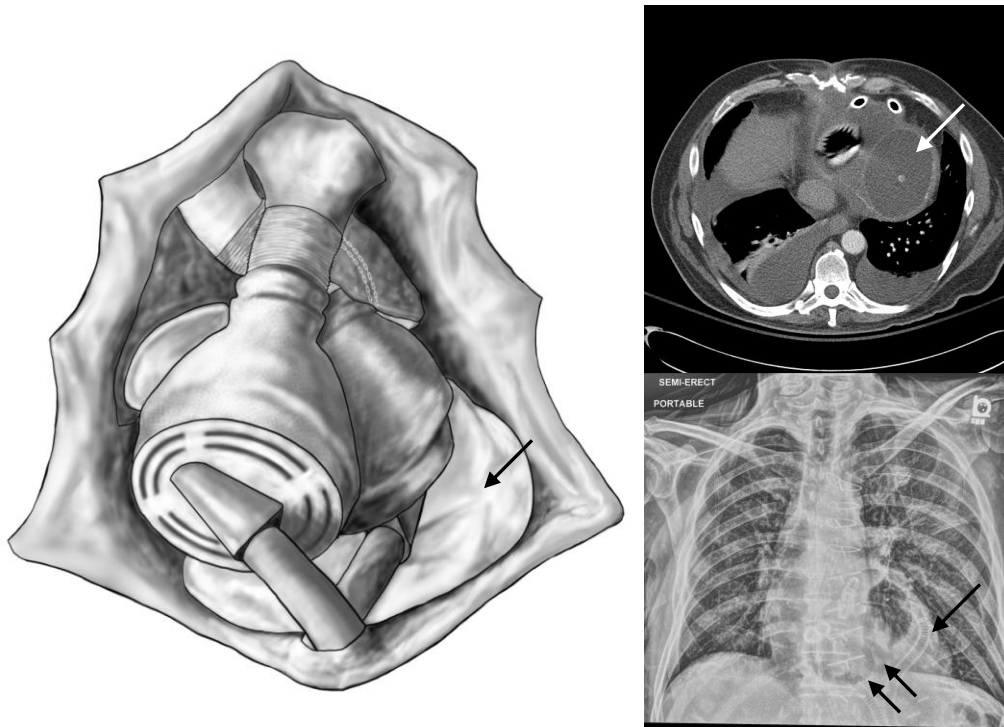
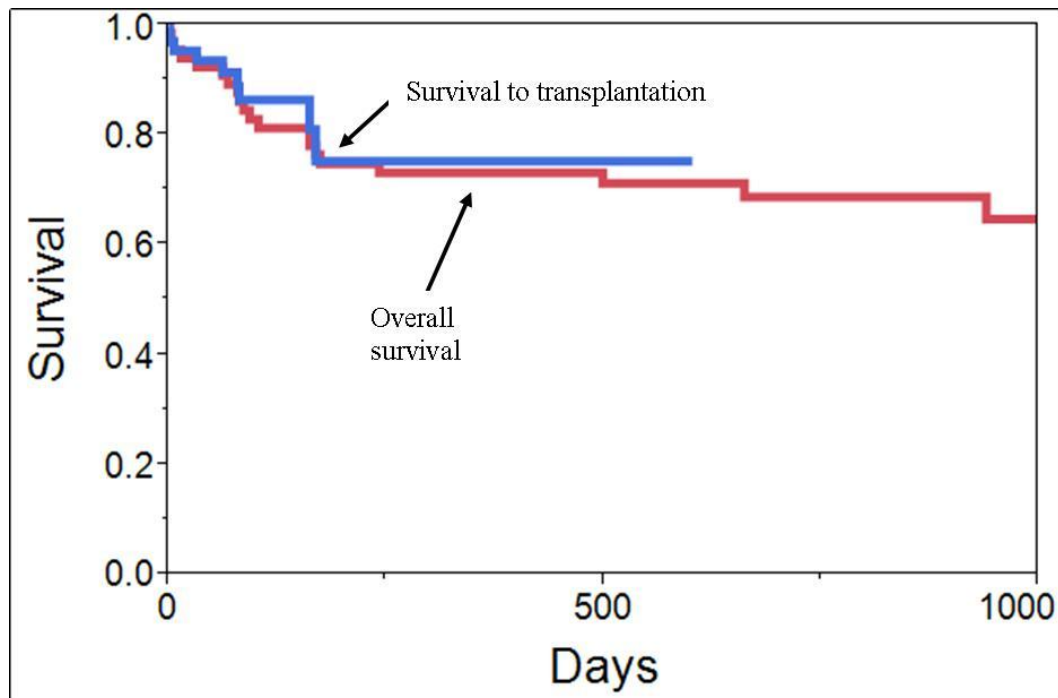


Figure 10. VCU Outcomes. Kaplan-Meier survival curves demonstrating survival to transplantation and overall survival following TAH implant.



#### Acknowledgments:

**Disclosures:** MH and VK have served as consultants for Syncardia Systems Inc. The other authors have nothing to disclose.

#### References:

1. Cooley, D. A., Liotta, D., Hallman, G. L., Bloodwell, R. D., Leachman, R. D., & Milam, J. D. (1969). Orthotopic cardiac prosthesis for two-staged cardiac replacement. *American Journal of Cardiology*, 24(5), 723–730.
2. Cooley DA. [The total artificial heart](#). *Nat Med*. 2003 Jan;9(1):108-11.
3. DeVries [WC](#), [Anderson JL](#), [Joyce LD](#), [Anderson FL](#), [Hammond EH](#), [Jarvik RK](#), [Kolff WJ](#). Clinical use of the total artificial heart. [N Engl J Med](#). 1984 Feb 2;310(5):273-8
4. Syncardia Systems. (Feb 23, 2012). 1000<sup>th</sup> Implant of the World's Only Approved Total Artificial Heart Performed. [Press release]. Retrieved from [www.syncardia.com](http://www.syncardia.com)
5. Joyce LD, et al. Nine year experience with the clinical use of total artificial hearts as cardiac support devices. *ASAIO Transactions*. 34:703-707 (1988)
6. DeVries WC. Surgical Technique for Implantation of the Jarvik-7-100 Total Artificial Heart. *JAMA*. 259(6): 875-880.
7. Copeland JG, et al. Cardiac replacement with a total artificial heart as a bridge to transplantation. *N Engl J Med*. 351: 859-867 (2004)
8. Kasirajan V, Tang DG, Katlaps GJ, Shah KB. The total artificial heart for biventricular failure and beyond. *Curr Opin Cardiol* 2012; 27 (2012)
9. Copeland JG, et al. Risk factor analysis for bridge to transplantation with the CardioWest total artificial heart. *Ann Thorac Surg* 2008;85:1639 –1644.

10. Kormos RL, et al. Right ventricular failure in patients with the HeartMate II continuous-flow left ventricular assist device: incidence, risk factors, and effect on outcomes. *J Thorac Cardiovasc Surg.* 139:1316–1324 (2010)
11. Fitzpatrick JR III, et al. Early planned institution of biventricular mechanical circulatory support results in improved outcomes compared with delayed conversion of a left ventricular assist device to a biventricular assist device. *J Thorac Cardiovasc Surg* 2009;137:971–977.
12. Matthews JC, Koelling TM, Pagani FD, Aaronson KD. The right ventricular failure risk score a pre-operative tool for assessing the risk of right ventricular failure in left ventricular assist device candidates. *J Am Coll Cardiol.* 51:2163–72 (2008).
13. Ochialy Y, et al. Predictors of Severe Right Ventricular Failure After Implantable Left Ventricular Assist Device Insertion: Analysis of 245 Patients. *Circulation.* 106 (suppl I): I-198 – I-202 (2002)
14. Drakos SG, et al. Risk factors predictive of right ventricular failure after left ventricular assist device implantation. *Am J Cardiol.* 105:1030–5 (2010)
15. Fitzpatrick JR III, et al. Risk score derived from pre-operative data analysis predicts the need for biventricular mechanical circulatory support. *J Heart Lung Transplant.* 27:1286–92 (2008)
16. Pettinari M, et al. Are right ventricular risk scores useful? *Eur J Cardiothorac Surg.* Epub 1-6. (2012)
17. Arabia FA, Copeland JG, Pavie A, Smith RG. Implantation Technique for the CardioWest Total Artificial Heart. *Ann Thorac Surg.* 68: 698-704 (1999)
18. Copeland JG, Arabia FA, Smith RG, Covington D. Synthetic membrane neopericardium facilitates total artificial heart explantation. *J Heart Lung Transplant.* 20:654–656. (2001)
19. Crouch MA, et al. Successful use and dosing of bivalirudin after temporary total artificial heart implantation: a case series. *Pharmacotherapy.* 28:1413–1420. (2008)
20. Ensor CR, et al. Antithrombotic therapy for the CardioWest temporary total artificial heart. *Tex Heart Inst J.* 37:149–158. (2010)
21. Stribling WK, et al. Use of nesiritide and renal function following total artificial heart implantation. *J Heart Lung Transplant.* 30:S96. (2011)
22. Shah KB, et al. Impact of low dose B-type natriuretic peptide infusion on urine output after total artificial heart implantation. *J Heart Lung Transplant.* 31(6):670-2. (2012)
23. Mankad AK, et al. Persistent anemia in patients supported with the total artificial heart: hemolysis and ineffective erythropoiesis. *J Card Fail.* 17:S42. (2011)
24. Kohli HS, et al. Exercise blood pressure response during assisted circulatory support: comparison of the total artificial heart with a leftventricular assist device during rehabilitation. *J Heart Lung Transplant.* 30:1207–1213 (2011)
25. Jaroszewski DE, Anderson EM, Pierce CN, Arabia FA. The SynCardia freedom driver: a portable driver for discharge home with the total artificial heart. *J Heart Lung Transplant.* 30:844–845 (2011)
26. Yankah L, Shah KB, Hess ML, Kasirajan V, Tang DG. Response of the Syncardia TAH Pneumatic Drivers to Afterload Challenge on a Mock Loop. *ASAIO Journal.* 58(7)Supp 1: 9 (2012)



Reviewers' comments:

Reviewer #1:

*Summary:*

The surgical implant technique of the Syncardia total artificial heart is described in this manuscript. Although the implant technique is not invented by the authors, it is clearly described in a way to inform the surgeons or scientists who may want to apply the same technique. The manuscript deserves to be published in its current format.

The surgical technique is clearly described in a methodological order.

Reviewer #2:

*Summary:*

The total artificial heart is an evolving field applicable to one of the sick cohort of heart failure patients. With the limited alternatives available, rationale is well described.

*Minor Concerns:*

There is some colloquial language , which can be improved .e.g. bloody surgical field

Language was revised.

Reviewer #3:

*Summary:*

The well written paper gives an excellent overview of the current protocol of TAH implantation in the mentioned center and shown potential for Improvement of Patient management.

Besides a review of the indication and implantation procedure of a Syncardia TAH the article describes an adaptation of the postoperative patient management that will be of interest to the community.

*Major Concerns:*

No major concerns.

*Minor Concerns:*

1.) The abstract should focus more on the more recent aspects of the publication (e.g. case representation, post operative management, hypothesis of supplementation of natriuretic peptide)

Patient case will change – but will add to final version.

2.) On page 1 "without the toxicity of high dose inotropic medications" might imply that a TAH is an alternative for inotropic medication.

Language was removed

3.) On page 6, in 4.13 it is not mentioned when the right pump is started and at which pressures.

Additional information was added

4.) Furthermore the outcome of the patient presented in the introduction might be of interest to the reader.

Actual patient implant for the video filming will be different. Case and outcome will change. Will include information as available.

5.) On page 9 the sentence structure is corrupted: "patients were majority of patients were".

Corrected.

*Additional Comments to Authors:*

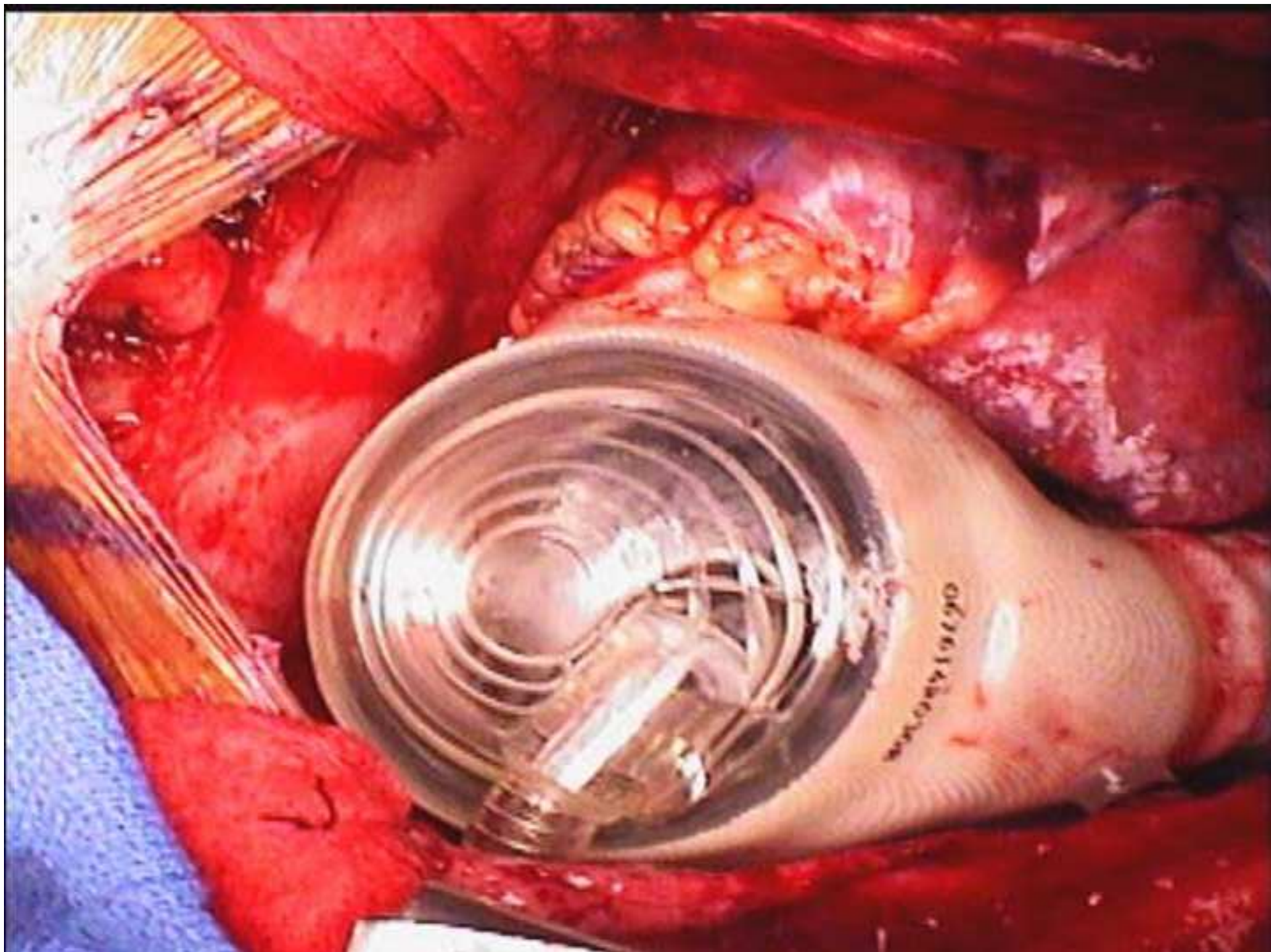
The background and the technique is well explained. It is unclear if different approaches exist and how wide the technique is already spread.

General techniques appear to be fairly standard. Our technique is presented. Other known or published techniques is limited but are commented on.

---

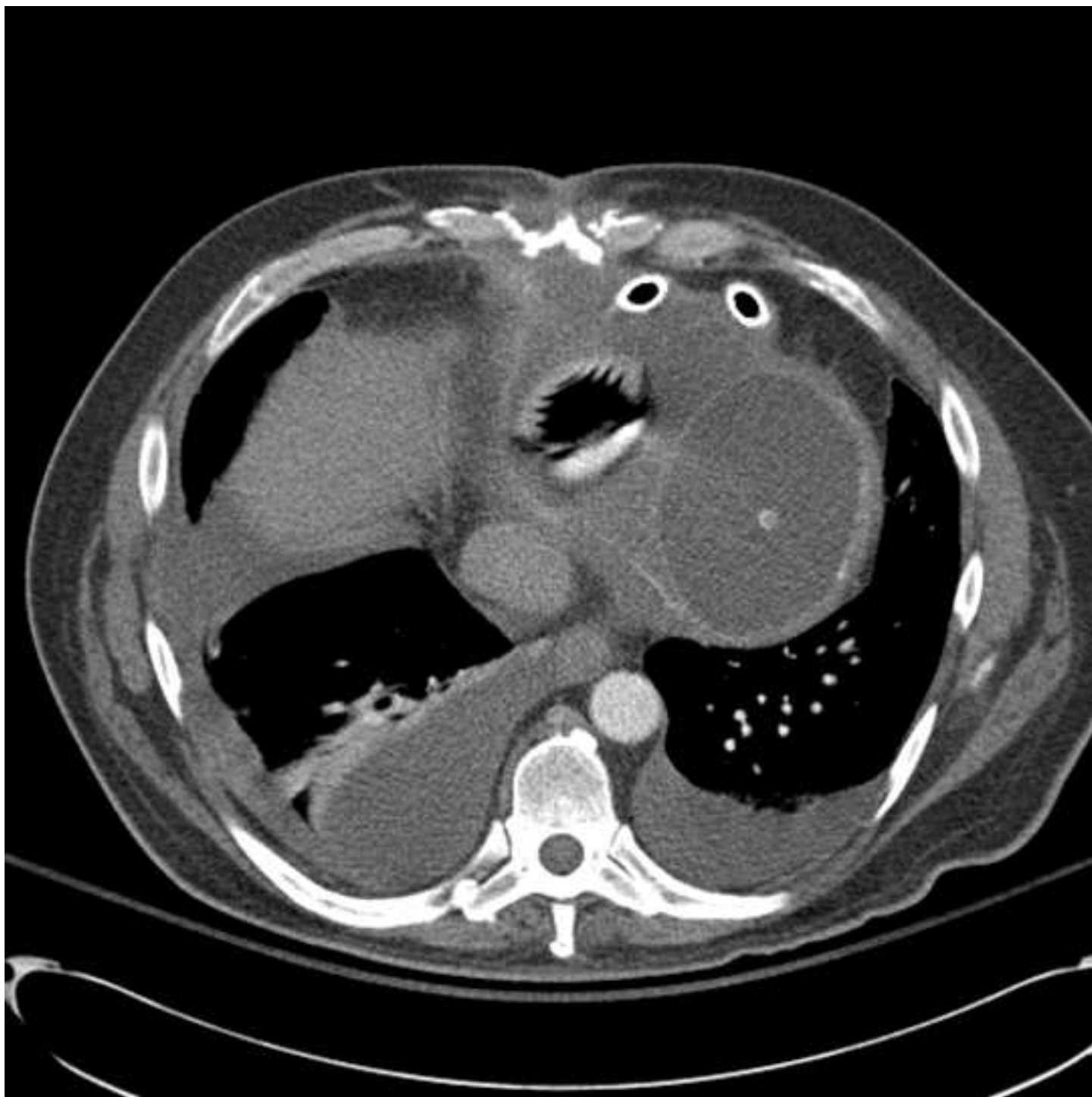
\*Figure

[Click here to download high resolution image](#)



\*Figure

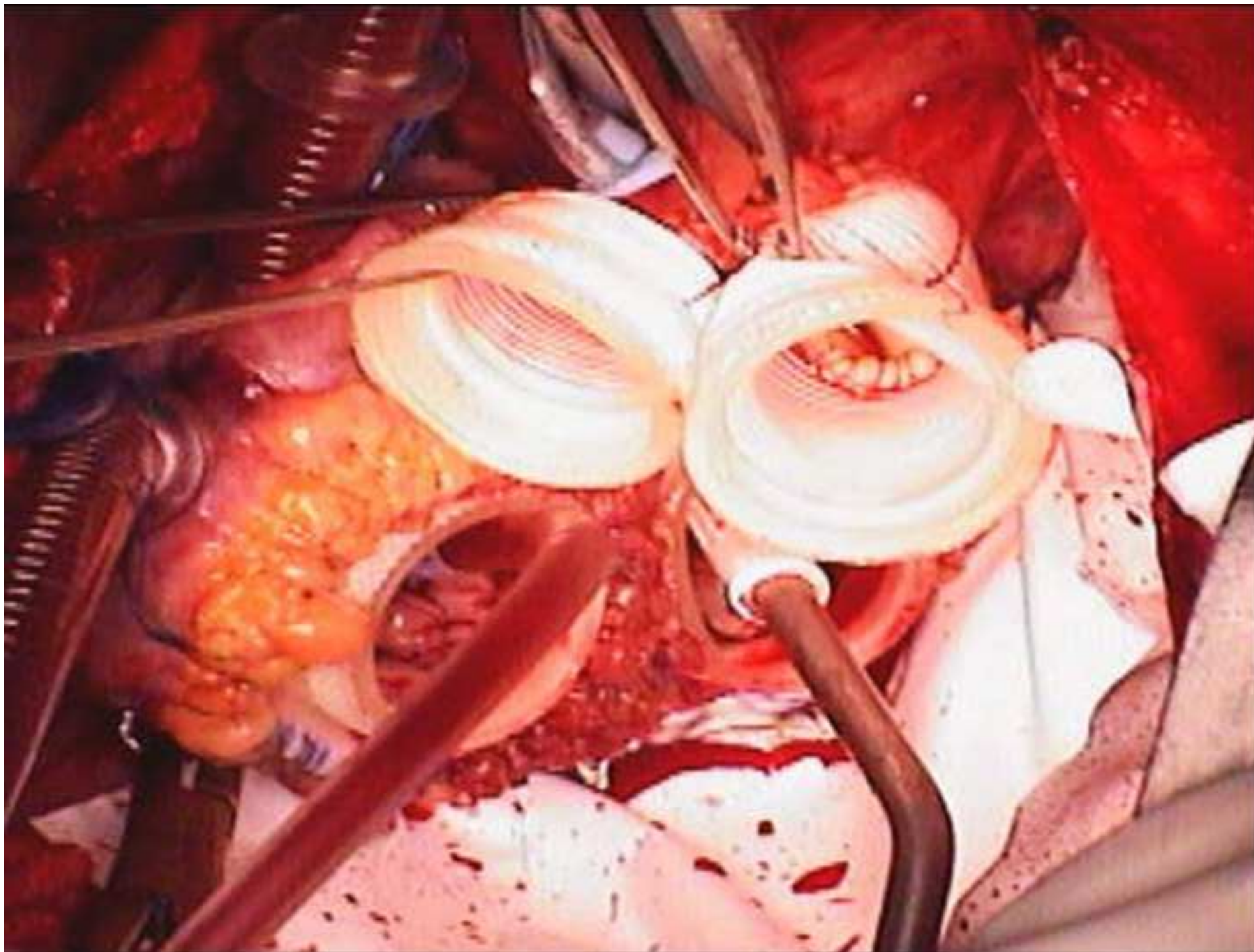
[Click here to download high resolution image](#)





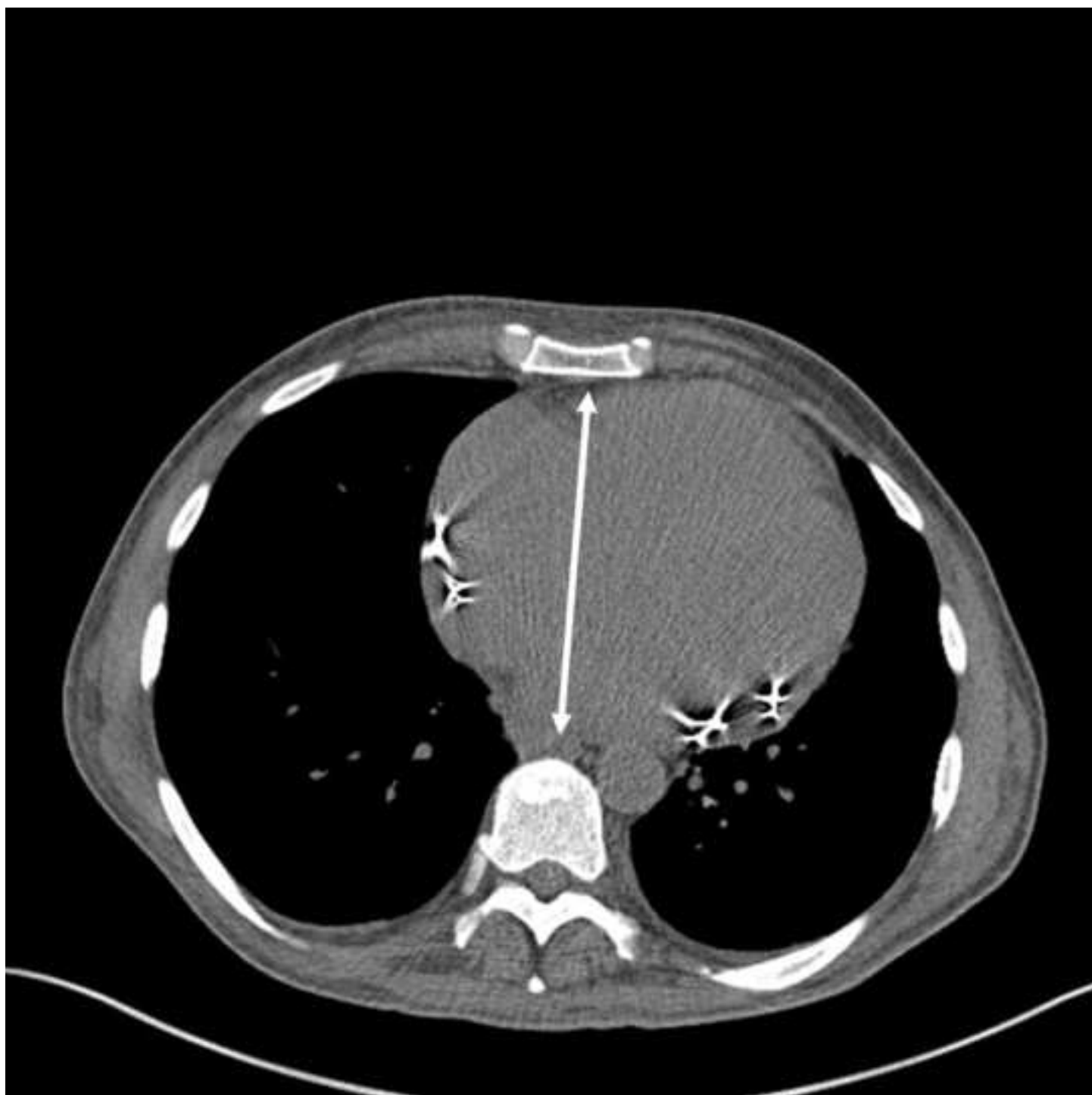
\*Figure

[Click here to download high resolution image](#)

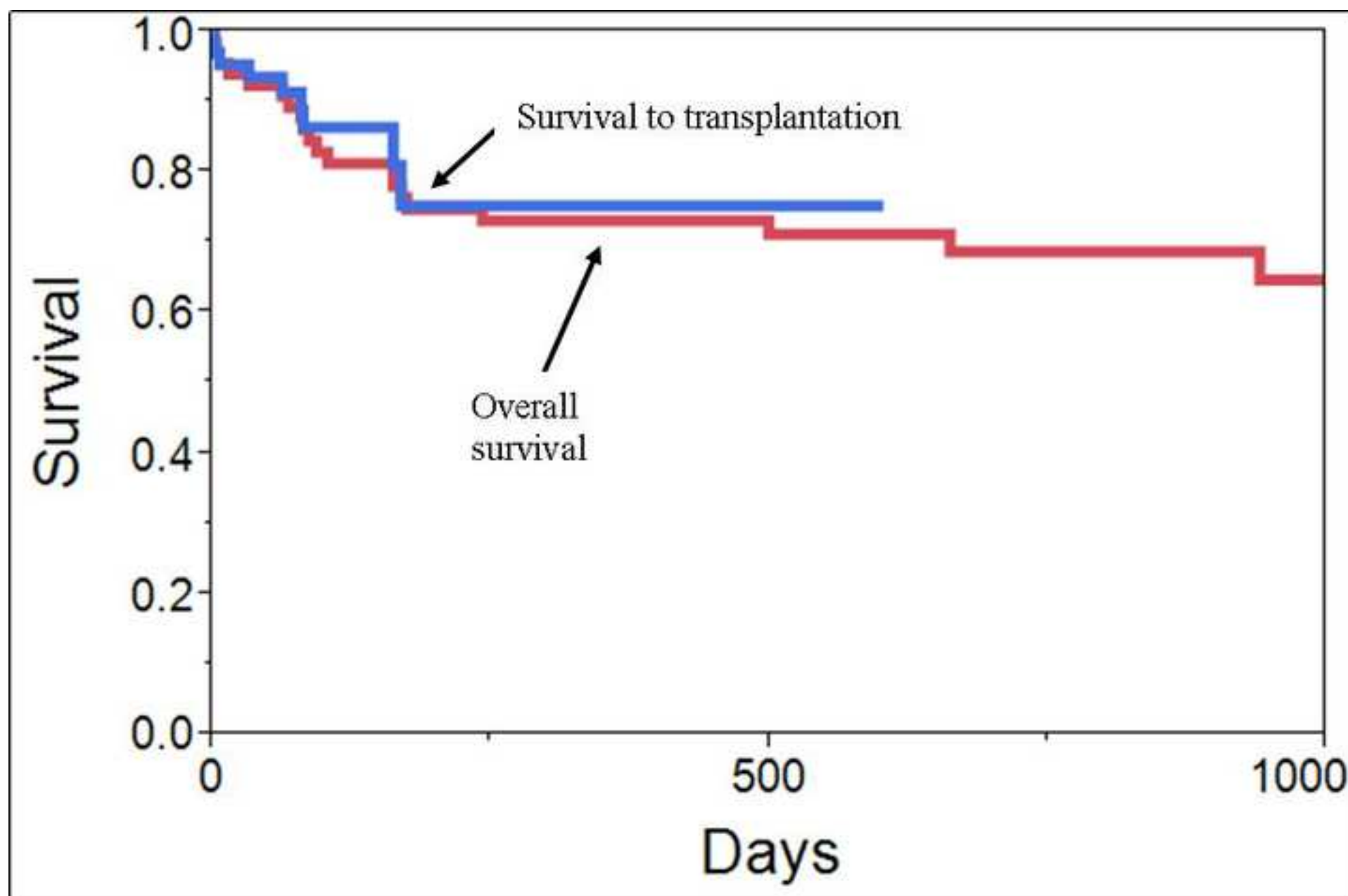


\*Figure

[Click here to download high resolution image](#)



\*Figure  
[Click here to download high resolution image](#)



\*Table of Reagents/ Materials Used  
[Click here to download Table of Reagents/ Materials Used: JOVE materials.xls](#)

Name of Reagent/Material	Company	Catalog Number	Comments
Total artificial heart	Syncardia		
Preclude pericardial membrane	Gore		
Smooth saline breast implant	Mentor		



# ARTICLE AND VIDEO LICENSE AGREEMENT

Title of Article:

Implantation of the Syncardia Total Artificial Heart

Author(s):

Daniel G. Tang, Keyur B. Shah, Micheal L. Hess, Vigneshwar Kasirajan

Item 1 (check one box): The Author elects to have the Materials be made available (as described at <http://www.jove.com/publish>) via: ☒ Standard Access ☐ Open Access

Item 2 (check one box):

- ☒ The Author is NOT a United States government employee.
- ☐ The Author is a United States government employee and the Materials were prepared in the course of his or her duties as a United States government employee.
- ☐ The Author is a United States government employee but the Materials were NOT prepared in the course of his or her duties as a United States government employee.

## ARTICLE AND VIDEO LICENSE AGREEMENT

1. **Defined Terms.** As used in this Article and Video License Agreement, the following terms shall have the following meanings: **"Agreement"** means this Article and Video License Agreement; **"Article"** means the article specified on the last page of this Agreement, including any associated materials such as texts, figures, tables, artwork, abstracts, or summaries contained therein; **"Author"** means the author who is a signatory to this Agreement; **"Collective Work"** means a work, such as a periodical issue, anthology or encyclopedia, in which the Materials in their entirety in unmodified form, along with a number of other contributions, constituting separate and independent works in themselves, are assembled into a collective whole; **"CRC License"** means the Creative Commons Attribution-Non Commercial-No Derivs 3.0 Unported Agreement, the terms and conditions of which can be found at: <http://creativecommons.org/licenses/by-nc-nd/3.0/legalcode>; **"Derivative Work"** means a work based upon the Materials or upon the Materials and other pre-existing works, such as a translation, musical arrangement, dramatization, fictionalization, motion picture version, sound recording, art reproduction, abridgment, condensation, or any other form in which the Materials may be recast, transformed, or adapted; **"Institution"** means the institution, listed on the last page of this Agreement, by which the Author was employed at the time of the creation of the Materials; **"JoVE"** means MyJoVE Corporation, a Massachusetts corporation and the publisher of *The Journal of Visualized Experiments*; **"Materials"** means the Article and / or the Video; **"Parties"** means the Author and JoVE; **"Video"** means any video(s) made by the Author, alone or in conjunction with any other parties, or by JoVE or its affiliates or agents, individually or in collaboration with the Author or any other parties, incorporating all or any portion of the Article, and in which the Author may or may not appear.

2. **Background.** The Author, who is the author of the Article, in order to ensure the dissemination and protection of the Article, desires to have the JoVE publish the Article and create and transmit videos based on the Article. In furtherance of such goals, the Parties desire to memorialize in this Agreement the respective rights of each Party in and to the Article and the Video.

3. **Grant of Rights in Article.** In consideration of JoVE agreeing to publish the Article, the Author hereby grants to JoVE, subject to **Sections 4 and 7** below, the exclusive, royalty-free, perpetual (for the full term of copyright in the Article, including any extensions thereto) license (a) to publish, reproduce, distribute, display and store the Article in all forms, formats and media whether now known or hereafter developed (including without limitation in print, digital and electronic form) throughout the world, (b) to translate the Article into other languages, create adaptations, summaries or extracts of the Article or other Derivative Works (including, without limitation, the Video) or Collective Works based on all or any portion of the Article and exercise all of the rights set forth in (a) above in such translations, adaptations, summaries, extracts, Derivative Works or Collective Works and (c) to license others to do any or all of the above. The foregoing rights may be exercised in all media and formats, whether now known or hereafter devised, and include the right to make such modifications as are technically necessary to exercise the rights in other media and formats. If the "Open Access" box has been checked in **Item 1** above, JoVE and the Author hereby grant to the public all such rights in the Article as provided in, but subject to all limitations and requirements set forth in, the CRC License.

4. **Retention of Rights in Article.** Notwithstanding the exclusive license granted to JoVE in **Section 3** above, the

Author shall, with respect to the Article, retain the non-exclusive right to use all or part of the Article for the non-commercial purpose of giving lectures, presentations or teaching classes, and to post a copy of the Article on the Institution's website or the Author's personal website, in each case provided that a link to the Article on the JoVE website is provided and notice of JoVE's copyright in the Article is included. All non-copyright intellectual property rights in and to the Article, such as patent rights, shall remain with the Author.

5. Grant of Rights in Video – Standard Access. This **Section 5** applies if the "Standard Access" box has been checked in **Item 1** above or if no box has been checked in **Item 1** above. In consideration of JoVE agreeing to produce, display or otherwise assist with the Video, the Author hereby acknowledges and agrees that, Subject to **Section 7** below, JoVE is and shall be the sole and exclusive owner of all rights of any nature, including, without limitation, all copyrights, in and to the Video. To the extent that, by law, the Author is deemed, now or at any time in the future, to have any rights of any nature in or to the Video, the Author hereby disclaims all such rights and transfers all such rights to JoVE.

6. Grant of Rights in Video – Open Access. This **Section 6** applies only if the "Open Access" box has been checked in **Item 1** above. In consideration of JoVE agreeing to produce, display or otherwise assist with the Video, the Author hereby grants to JoVE, subject to **Section 7** below, the exclusive, royalty-free, perpetual (for the full term of copyright in the Article, including any extensions thereto) license (a) to publish, reproduce, distribute, display and store the Video in all forms, formats and media whether now known or hereafter developed (including without limitation in print, digital and electronic form) throughout the world, (b) to translate the Video into other languages, create adaptations, summaries or extracts of the Video or other Derivative Works or Collective Works based on all or any portion of the Video and exercise all of the rights set forth in (a) above in such translations, adaptations, summaries, extracts, Derivative Works or Collective Works and (c) to license others to do any or all of the above. The foregoing rights may be exercised in all media and formats, whether now known or hereafter devised, and include the right to make such modifications as are technically necessary to exercise the rights in other media and formats. For any Video to which this Section 6 is applicable, JoVE and the Author hereby grant to the public all such rights in the Video as provided in, but subject to all limitations and requirements set forth in, the CRC License.

7. Government Employees. If the Author is a United States government employee and the Article was prepared in the course of his or her duties as a United States government employee, as indicated in **Item 2** above, and any of the licenses or grants granted by the Author hereunder exceed the scope of the 17 U.S.C. 403, then the rights granted hereunder shall be limited to the maximum rights permitted under such statute. In such case, all provisions contained herein that are not in conflict with such statute shall remain in full force and effect, and all provisions contained herein that do so conflict

shall be deemed to be amended so as to provide to JoVE the maximum rights permissible within such statute.

8. Likeness, Privacy, Personality. The Author hereby grants JoVE the right to use the Author's name, voice, likeness, picture, photograph, image, biography and performance in any way, commercial or otherwise, in connection with the Materials and the sale, promotion and distribution thereof. The Author hereby waives any and all rights he or she may have, relating to his or her appearance in the Video or otherwise relating to the Materials, under all applicable privacy, likeness, personality or similar laws.

9. Author Warranties. The Author represents and warrants that the Article is original, that it has not been published, that the copyright interest is owned by the Author (or, if more than one author is listed at the beginning of this Agreement, by such authors collectively) and has not been assigned, licensed, or otherwise transferred to any other party. The Author represents and warrants that the author(s) listed at the top of this Agreement are the only authors of the Materials. If more than one author is listed at the top of this Agreement and if any such author has not entered into a separate Article and Video License Agreement with JoVE relating to the Materials, the Author represents and warrants that the Author has been authorized by each of the other such authors to execute this Agreement on his or her behalf and to bind him or her with respect to the terms of this Agreement as if each of them had been a party hereto as an Author. The Author warrants that the use, reproduction, distribution, public or private performance or display, and/or modification of all or any portion of the Materials does not and will not violate, infringe and/or misappropriate the patent, trademark, intellectual property or other rights of any third party. The Author represents and warrants that it has and will continue to comply with all government, institutional and other regulations, including, without limitation all institutional, laboratory, hospital, ethical, human and animal treatment, privacy, and all other rules, regulations, laws, procedures or guidelines, applicable to the Materials, and that all research involving human and animal subjects has been approved by the Author's relevant institutional review board.

10. JoVE Discretion. If the Author requests the assistance of JoVE in producing the Video in the Author's facility, the Author shall ensure that the presence of JoVE employees, agents or independent contractors is in accordance with the relevant regulations of the Author's institution. If more than one author is listed at the beginning of this Agreement, JoVE may, in its sole discretion, elect not take any action with respect to the Article until such time as it has received complete, executed Article and Video License Agreements from each such author. JoVE reserves the right, in its absolute and sole discretion and without giving any reason therefore, to accept or decline any work submitted to JoVE. JoVE and its employees, agents and independent contractors shall have full, unfettered access to the facilities of the Author or of the Author's institution as necessary to make the Video, whether actually published or not. JoVE has sole discretion as to the method of making and publishing the Materials, including,

## ARTICLE AND VIDEO LICENSE AGREEMENT

without limitation, to all decisions regarding editing, lighting, filming, timing of publication, if any, length, quality, content and the like.

11. **Indemnification.** The Author agrees to indemnify JoVE and/or its successors and assigns from and against any and all claims, costs, and expenses, including attorney's fees, arising out of any breach of any warranty or other representations contained herein. The Author further agrees to indemnify and hold harmless JoVE from and against any and all claims, costs, and expenses, including attorney's fees, resulting from the breach by the Author of any representation or warranty contained herein or from allegations or instances of violation of intellectual property rights, damage to the Author's or the Author's institution's facilities, fraud, libel, defamation, research, equipment, experiments, property damage, personal injury, violations of institutional, laboratory, hospital, ethical, human and animal treatment, privacy or other rules, regulations, laws, procedures or guidelines, liabilities and other losses or damages related in any way to the submission of work to JoVE, making of videos by JoVE, or publication in JoVE or elsewhere by JoVE. The Author shall be responsible for, and shall hold JoVE harmless from, damages caused by lack of sterilization, lack of cleanliness or by contamination due to the making of a video by JoVE its employees, agents or independent contractors. All sterilization, cleanliness or decontamination procedures shall be solely the responsibility of the Author and shall be undertaken at the Author's expense. All indemnifications provided herein shall include JoVE's attorney's fees and costs related to said losses or

damages. Such indemnification and holding harmless shall include such losses or damages incurred by, or in connection with, acts or omissions of JoVE, its employees, agents or independent contractors.

12. **Fees.** To cover the cost incurred for publication, JoVE must receive payment before production and publication the Materials. Payment is due in 21 days of invoice. Should the Materials not be published due to an editorial or production decision, these funds will be returned to the Author. Withdrawal by the Author of any submitted Materials after final peer review approval will result in a US\$1,200 fee to cover pre-production expenses incurred by JoVE. If payment is not received by the completion of filming, production and publication of the Materials will be suspended until payment is received.

13. **Transfer, Governing Law.** This Agreement may be assigned by JoVE and shall inure to the benefits of any of JoVE's successors and assignees. This Agreement shall be governed and construed by the internal laws of the Commonwealth of Massachusetts without giving effect to any conflict of law provision thereunder. This Agreement may be executed in counterparts, each of which shall be deemed an original, but all of which together shall be deemed to be one and the same agreement. A signed copy of this Agreement delivered by facsimile, e-mail or other means of electronic transmission shall be deemed to have the same legal effect as delivery of an original signed copy of this Agreement.

A signed copy of this document must be sent with all new submissions. Only one Agreement required per submission.

### AUTHOR:

Name:

Daniel G. Tang

Department:

Cardiothoracic Surgery

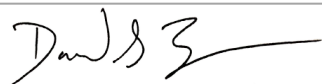
Institution:

Virginia Commonwealth University

Article Title:

Implantation of the Syncardia Total Artificial Heart

Signature:



Date:

9/10/2012

Please submit a signed and dated copy of this license by one of the following three methods:

- 1) Upload a scanned copy as a PDF to the JoVE submission site upon manuscript submission (preferred);
- 2) Fax the document to +1.866.381.2236; or
- 3) Mail the document to JoVE / Attn: JoVE Editorial / 17 Sellers St / Cambridge, MA 02139

For questions, please email [editorial@jove.com](mailto:editorial@jove.com) or call +1.617.945.9051.

MS # (internal use):

\*Rebuttal Comments

[Click here to download Rebuttal Comments: Proxied 50377 rebuttal comments.docx](#)

Proxied 50377 rebuttal comments