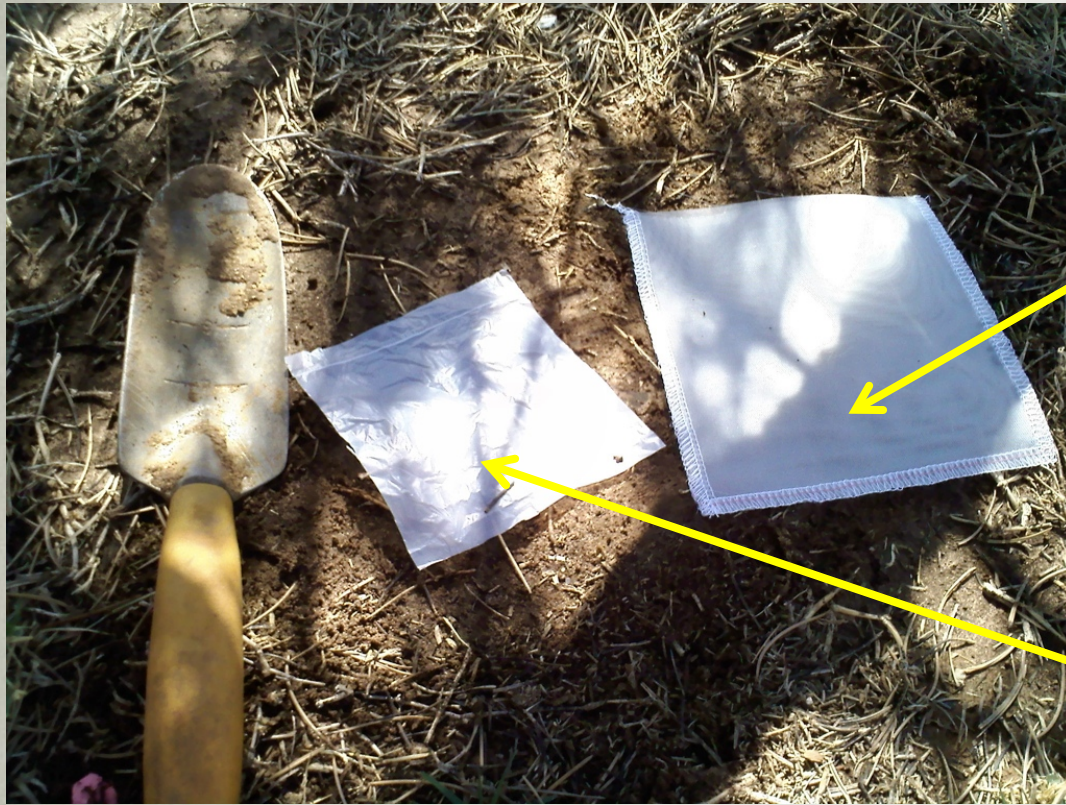


# P1



Mesh bag (250 micron) sewn on 3 sides

Mulch piece



Insert mulch piece into mesh bag



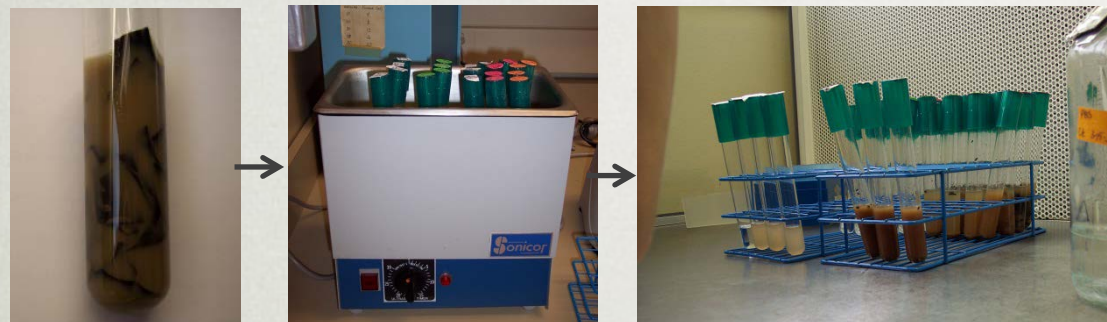
Bury mesh bag in soil for 6 months



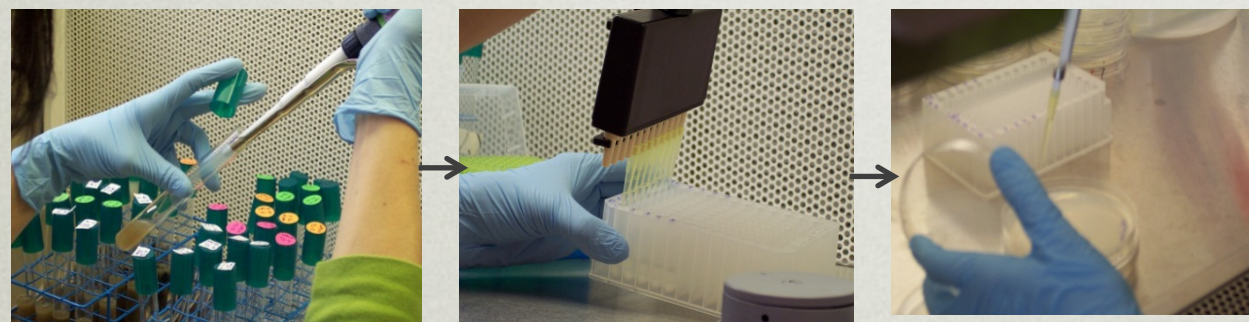
# P2



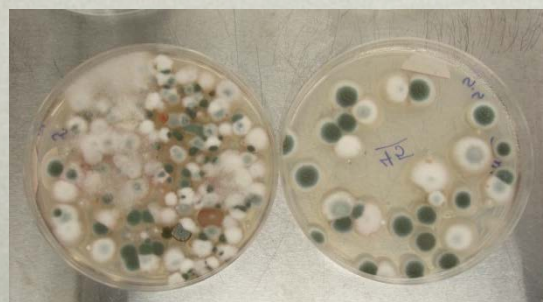
Retrieve bag and extract mulch.



Sonicate mulch pieces in a buffer solution.



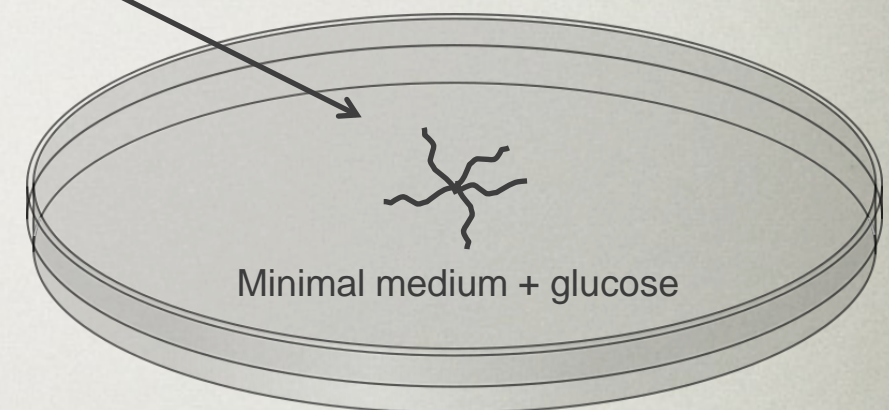
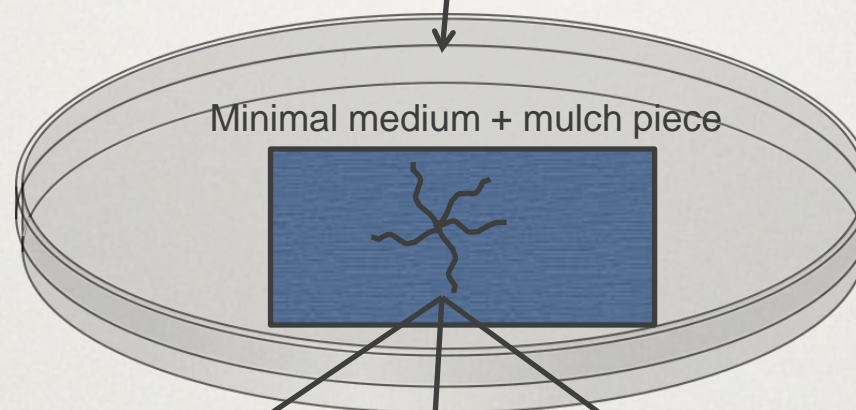
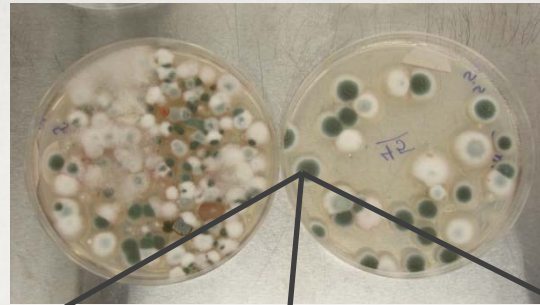
Dilute soil/microbe/buffer suspension. Spread dilutions on Petri plates.



Incubate Petri plates until single isolated colonies appear.



# P3



Minimal medium  
(no added  
carbon; negative  
control)

Minimal medium +  
mulch piece

Minimal medium  
+ glucose  
(positive control)



# P4

Inspect samples for colonization of mulch piece via light and scanning electron microscopy

