

Journal of Visualized Experiments

3D PRINTING OF PRECLINICAL X-RAY COMPUTED TOMOGRAPHIC DATA SETS

--Manuscript Draft--

| | |
|--|--|
| Manuscript Number: | JoVE50250R2 |
| Full Title: | 3D PRINTING OF PRECLINICAL X-RAY COMPUTED TOMOGRAPHIC DATA SETS |
| Article Type: | Methods Article - JoVE Produced Video |
| Corresponding Author: | W. Matthew Leevy, Ph.D. University of Notre Dame Notre Dame, IN UNITED STATES |
| Corresponding Author Secondary Information: | |
| Corresponding Author's Institution: | University of Notre Dame |
| Corresponding Author's Secondary Institution: | |
| First Author: | Evan Doney |
| First Author Secondary Information: | |
| Order of Authors Secondary Information: | |
| | |
| | |
| | |
| | |
| | |
| Abstract: | <p>Three-dimensional printing allows for the production of highly detailed objects through a process known as additive manufacturing. Traditional, mold-injection methods to create models or parts have several limitations, the most important of which is a difficulty in making highly complex products in a timely, cost-effective manner. However, gradual improvements in three-dimensional printing technology have resulted in both high-end and economy instruments that are now available for the facile production of customized models. These printers have the ability to extrude high-resolution objects with enough detail to accurately represent in vivo images generated from a preclinical X-ray CT scanner. With proper data collection, surface rendering, and stereolithographic editing, it is now possible and inexpensive to rapidly produce detailed skeletal and soft tissue structures from X-ray CT data. Even in the early stages of development, the anatomical models produced by three-dimensional printing appeal to both educators and researchers who can utilize the technology to improve visualization proficiency. , The real benefits of this method result from the tangible experience a researcher can have with data that cannot be adequately conveyed through a computer screen. The translation of pre-clinical 3D data to a physical object that is an exact copy of the test subject is a powerful tool for visualization and communication, especially for relating imaging research to students, or those in other fields. Here, we provide a detailed method for printing plastic models of bone and organ structures derived from X-ray CT scans utilizing an Albira X-ray CT system in conjunction with PMOD, ImageJ, Meshlab, Netfabb, and ReplicatorG software packages.</p> |
| Corresponding Author E-Mail: | wleevy@nd.edu |
| Other Authors: | Evan Doney |
| | Lauren A. Krumdick |
| | Justin M. Diener |
| | Connor A. Wathen |
| | Sarah E. Chapman |
| | Brian Stamile |
| | Jeremiah E. Scott, Ph.D. |

3D PRINTING OF PRECLINICAL X-RAY COMPUTED TOMOGRAPHIC DATA SETS

Evan L. Doney, Lauren A. Krumdick, Justin M. Diener, Connor A. Wathen, Sarah E. Chapman,
Brian Stamile, Jeremiah E. Scott, Matthew J. Ravosa, W. Matthew Leevy*

Authors:

Evan L. Doney
Department Chemistry and Biochemistry
University of Notre Dame
edoney@nd.edu

Lauren A. Krumdick
Department of Chemistry and Biochemistry
University of Notre Dame
lkrumdic@nd.edu

Justin M. Diener
Freimann Life Science Center
University of Notre Dame
Justindiener@gmail.com

Connor A. Wathen
Department of Biological Sciences
University of Notre Dame
cwathen@nd.edu

Sarah E. Chapman
Notre Dame Integrated Imaging Facility
University of Notre Dame
Sarah.chapman55@gmail.com

Brian Stamile
MakerBot Industries LLC
Brian.Stamile@makerbot.com

Jeremiah E. Scott
Department of Biological Sciences
University of Notre Dame
jeremiah.e.scott@gmail.com

Matthew J. Ravosa
Departments of Biological Sciences, Aerospace and Mechanical Engineering, and Anthropology
University of Notre Dame
matthew.j.ravosa.1@nd.edu

W. Matthew Leevy
Department of Chemistry and Biochemistry
Notre Dame Integrated Imaging Facility
University of Notre Dame
wleevy@nd.edu

***Corresponding author:** W. Matthew Leevy

Keywords: 3D printing, X-ray CT, data extrusion, additive printing, in vivo imaging

Short Abstract: Using modern plastic extrusion and printing technologies, it is now possible to quickly and inexpensively produce physical models of X-ray CT data taken in a laboratory. The three-dimensional printing of tomographic data is a powerful visualization, research, and educational tool that may now be accessed by the preclinical imaging community.

Long Abstract: Three-dimensional printing allows for the production of highly detailed objects through a process known as additive manufacturing. Traditional, mold-injection methods to create models or parts have several limitations, the most important of which is a difficulty in making highly complex products in a timely, cost-effective manner.¹ However, gradual improvements in three-dimensional printing technology have resulted in both high-end and economy instruments that are now available for the facile production of customized models.² These printers have the ability to extrude high-resolution objects with enough detail to accurately represent *in vivo* images generated from a preclinical X-ray CT scanner. With proper data collection, surface rendering, and stereolithographic editing, it is now possible and inexpensive to rapidly produce detailed skeletal and soft tissue structures from X-ray CT data. Even in the early stages of development, the anatomical models produced by three-dimensional printing appeal to both educators and researchers who can utilize the technology to improve visualization proficiency.^{3,4} The real benefits of this method result from the tangible experience a researcher can have with data that cannot be adequately conveyed through a computer screen. The translation of pre-clinical 3D data to a physical object that is an *exact* copy of the test subject is a powerful tool for visualization and communication, especially for relating imaging research to students, or those in other fields. Here, we provide a detailed method for printing plastic models of bone and organ structures derived from X-ray CT scans utilizing an Albira X-ray CT system in conjunction with PMOD, ImageJ, Meshlab, Netfabb, and ReplicatorG software packages.

Procedure:

1.0 Animals

1.1 For the results reported below, one male Lobund-Wistar rat of ten months of age was obtained from the Freimann Life Science Center, University of Notre Dame (Notre Dame, Indiana, USA). An *ex vivo* New Zealand White Rabbit (Male, age = 8 weeks) skull sample, preserved in 10% formalin, was obtained from the laboratory of Prof. Matthew Ravosa, University of Notre Dame.

1.2 For in vivo imaging, the rat was anesthetized by Isoflurane (2.5% flow rate) with maintenance via a nose-cone system. The animal was positioned prone in the standard rat bed (M2M Imaging Inc., Cleveland, Ohio) supplied with the Albira image station. Limbs were positioned lateral from the torso for a uniform CT acquisition.

1.3 After image acquisition was completed, the rat was removed from the nose cone and returned to the recovery cage until ambulatory.

1.4 For scans of the rabbit skull, the specimen was placed in the rat bed in a sealed plastic bag containing formalin.

2.0 Image Acquisition and Reconstruction

2.1 In Vivo and Ex Vivo Image acquisitions were performed using the Albira CT system (Carestream Molecular Imaging, Woodbridge, CT). The system was set to scan a bed of 180 mm length by performing three circular scans (600 projections per scan), each with a 65 mm FOV, which are then stitched together during reconstruction. The X-ray source was set to a current of 400 μ A and voltage of 45 kVp, and used a 0.5 mm Al filter to harden the beam. Approximate radiation deep dose equivalent for CT settings was 660 mSv, and shallow dose equivalent was 1171 mSv. These doses are over 10-fold lower than reported LD50 values.

2.2 Images are reconstructed using the FBP (Filtered Back Projection) algorithm via the Albira Suite 5.0 Reconstructor using “Standard” parameters. These combined acquisition and reconstruction settings produce a final image with .125 mm isotropic voxels, deemed sufficient for whole animal analysis and 3D printing of anatomical structures.

3.0 Data Processing

3.1 Skeletal features from CT scans may be printed from the raw data without segmentation. However, segmentation of soft tissues is required prior to processing the data for 3D printing. Here we show an example with lung tissue.

1. Open original MicroPET (data format for all modalities on the Albira Imaging System) file
2. Draw a volume of interest (VOI) around the mouse so that all external space is removed.
3. Under the 'VOI Tools' tab select 'Mask Outside Selected VOI' and set the masking value to -1000 Hounsfield Units (HU, radiodensity scale for CT), which will effectively set the external space to the CT density value of air.
4. With all the external space removed, under the 'Tools' tab, select 'External,' then click drop down arrow and select 'Segmentation'
5. Set range to -550 to -200 and click 'Ok.'
6. If file is very large, select 'Tools' tab, select 'Reduce,' and run the program
7. Save as an Analyze file

3.2 Data must first be converted into DICOM format using PMOD (PMOD Technologies LTD, Zurich, Switzerland) analysis software.

1. Open the PMOD Image Processing Software Package.
2. Along the top row, select the **View** tab.
3. In the lower right hand toolbar, click the downward arrow labeled **Database** under **Load**.
4. Select **MicroPET** for the raw CT data, or **Analyze** for the segmented lung.
5. Select the appropriate file and click **Add to Selected**.
6. Click **Open**.
7. In the lower right hand toolbar, click the upward arrow under **Save**.
8. From this menu, choose the file type **DICOM**.
9. Name the file and select **Save**.
10. Close PMOD.

3.3 DICOM data contains volumetric density values for each voxel. In order to print this data, it must be processed as a contiguous surface instead of a volume. ImageJ v1.43u will be used to obtain surface renderings for further processing.

1. Open ImageJ Image Processing Software
2. Select **File > Import**.
3. Select **Image Sequence**.

4. Navigate to the file containing the newly created DICOM and select it.
5. Select **Plug-ins > 3D > 3D Viewer**.
6. Two windows will appear, the 3D viewer will appear and an **ADD** window.
7. Under **Display as** in the **ADD** window change **Volume** to **Surface**.
8. Change the default value of **Threshold** to 210.
9. Click **OK**.
10. In the 3D Viewer menu bar, select **File > Export surfaces as > WaveFront**.
11. Name the file and click **Save**.

3.4 Two programs, Meshlab v1.3.1 and Netfabb Studio Basic 4.9, will concurrently remove any excess mesh, join together disconnected meshes, repair holes, and smooth the final mesh. The primary differences between these two programs are the tool sets made available to the user, and some of the interface navigation control. They are both 3D mesh editing software programs, and their use together provides the easiest approach to editing the model.



indicates that these actions should be executed in Meshlab v1.3.1



indicates that these actions should be executed in Netfabb Studio Basic 4.9

3.4.1 To import meshes into editing software:



1. Open Meshlab v1.3.1
2. From the menu bar select **File > New Empty Project**.
3. Select **File > Import Mesh**.
4. Select the file and click **Open**.
5. Once the file has loaded, a dialogue box will open. Keeping **Unify Duplicated Vertices** checked, press **OK**.



1. Open Netfabb Studio Basic 4.9.
2. Drag the desired file straight onto the Netfabb Studio Basic screen.

3.4.2 To remove unwanted mesh from the surface :



1. From the menu bar in Meshlab, select **Filters > Cleaning and Repairing > Remove Isolated Pieces (WRT Diameter)**.

2. Remove isolated connected components whose diameter is smaller than the specified constant. Enter a maximum diameter for these components and click **Apply**.

3. Gradually, increase the maximum diameter to remove bigger pieces. Click **Apply** after each diameter modification.

3.4.3 To join disconnected pieces, holes must be cut in the current meshes at the desired locations of a new bond, and a bridge of mesh must be built between.



1. Use the **Selection Tool**, seventh tool from the left in the menu bar, to select the pieces of mesh that will be cut out.
2. Delete selected pieces of mesh with the **Delete Faces** button, the third tool from the left in the menu bar.
3. From the menu bar, select **File > Export Mesh As**.
4. Name the file and change the file type to **STL**.
5. Press **Save**.



6. A dialogue box with saving options will appear, press **OK**.
7. Drag this new file into Netfabb.
8. On the top menu, select **Repair**, the fourth tool from the left.
9. Select the **Add triangles** tool, thirteenth from the left.
10. Click on an open edge (they will be yellow) on one side and then click on an open edge on the other piece. Create 5-10 bridges across the gap.
11. Select the **Automatic Repair** button at the bottom right
12. Highlight **Default Repair**.
13. Click **Execute**.
14. Press **Cancel** after the repair has been executed.

Optional: Some created triangles may be the wrong orientation. The following steps can be used to reorient these triangles.

1. Select the **Flip Selected Triangles** Button.
2. Click on any disoriented triangles to rotate all triangles in the correct direction.

3.4.4 To repair craters and holes, entire holes and craters must be removed and bridges must be built on each side of the mesh.



1. Click the **Selection Tool**.
2. Select the crater or hole to be filled.
3. Click the **Delete Faces** button.
4. From the menu bar, select **File > Export Mesh As**.
5. Name the file and change the file type to **STL**.
6. Press **Save**.
7. A dialogue box with saving options will appear, press **OK**.



8. Drag this new file into Netfabb.
9. On the top menu, select **Repair**, the fourth tool from the left.
10. Select the **Add triangles** tool, thirteenth from the left.
11. Click on an open edge (they will be yellow) on one side and then click on an open edge on the other piece. Create 5-10 bridges across the gap.
12. Select the **Automatic Repair** button at the bottom right
13. Highlight **Default Repair**.
14. Click **Execute**.
15. Press **Cancel** after the repair has been executed.

3.4.5 Laplacian smoothing, the smoothing algorithm in Meshlab, is used to smooth the object while still preserving the structural integrity of the model.



1. Navigate **Filters > Smoothing > Fairing and Deformation > Laplacian Smooth**
2. Select a number of smoothing iterations. More iterations will result in a smoother model, but each iteration slowly degrades the volume of the model, which can result in disconnected pieces and sharp edges. 1-5 iterations are recommended.
3. Press **OK**.
4. From the menu bar, select **File > Export Mesh As**.
5. Name the file and change the file type to **STL**.
5. Press **Save**.



6. A dialogue box with saving options will appear, press **OK**.
7. Drag this new file into Netfabb.

8. On the top menu, select **Repair**, the fourth tool from the left.
9. Select the **Add triangles** tool, thirteenth from the left.
10. Click on an open edge (they will be yellow) on one side and then click on an open edge on the other piece. Create 5-10 bridges across the gap.
11. Select the **Automatic Repair** button at the bottom right
12. Highlight **Default Repair**.
13. Click **Execute**.
14. Press **Cancel** after the repair has been executed.
15. From the menu bar, select **File > Export Mesh As**.
16. Name the final file and change the file type to **STL**.
17. Press **Save**.
18. A dialogue box with saving options will appear, press **OK**.

4.0 Printing

4.1 **Printing using the Makerbot**

1. Open the STL file in ReplicatorG. ReplicatorG is a Makerbot Industries program used to communicate with the Makerbot.
2. Click **Scale** from the lower right hand corner menu and select **Fill the Build Space!**
3. Select **Rotate** and click **Lay Flat**.
4. Click **Center**.
5. For models with fine detail, select **fill build platform** to scale up model.
6. From the same menu, click **Move** and select **Put on Platform**.
7. Once the proper orientation has been achieved, select **Generate GCODE** from the top menu bar.
*A window with printing options will appear.
8. Select the extruder that will provide the filament to print the object (**Left** or **Right**).
9. Check **Use Raft/Support**.
10. From the drop down menu entitled **Use support material**, select **Full Support**.
11. Select **Generate GCODE**. A pop-up box showing the progress of the GCODE will appear.
12. Once the GCODE has been completed, select **Build to file for use with SD card**.
13. Click **Save**.
14. Drag the file onto an SD card.

15. Place the SD card into the Makerbot and using the Makerbot keypad select **Print from SD**.
16. Under **Print from SD**, select the desired file name. The Makerbot will automatically begin to warm-up to print the object.

4.2 Shapeways Printing

1. After creating a free account with Shapeways, the STL file can be directly uploaded to the Shapeways website: <http://www.shapeways.com/upload/>
2. Click **Upload** and select the STL file.
3. Select a Title for the uploaded file.
4. Select a Unit of Measure from the dropdown menu.
5. Click **Upload Model**.
6. The file is now ready for printing through Shapeways. Once the file is uploaded Shapeways will take a few minutes to process the file to be sure it can actually be printed. You will be able to print the model from the “my models” page after about ten minutes.
7. The “white strong flexible” selection was used to print skeletal structures, while “purple strong flexible” was used for lung tissue.

4.3 ProJet HD 3000 Printing

1. The STL file may also be printed out using a commercial high-resolution three-dimensional printer like the ProJet HD 3000 (Innovation Park, Notre Dame, IN, USA).
2. The STL file is loaded into the 3D Systems proprietary to layout the job on the platform. This requires changing the orientation of the model around to minimize the use of wax support and print time. This file is saved.
3. The job is then electronically sent to the printer.
4. A platform of aluminum is loaded into the printer and the ProJet HD 3000 begins to print the object.
5. The model is then removed from the platform and placed into an oven at approximately 73°C to melt the support wax from the model.
8. The object is removed hot and wiped down with a Kimwipe to remove remaining surface wax.

Representative Results:

INSERT FIGURE 1

CAPTION: Figure 1: 3D printed models of the lungs and skeletal features of a rat X-ray CT data set. Objects were printed using a ProJet HD 3000 (left), Shapeways Inc. (Center) or a Makerbot Replicator (right). The scale bar denotes 2 cm. Note that the scale bar in panel C is smaller than that of A and B, which reflects that in some cases the Makerbot must print an enlarged object in order to output sufficient detail.

Figure 1 depicts the final products for three methods of printing of the same in vivo rat CT data set. All three models consist of a cropped skeletal structure and removable lungs which were printed independently and pieced together. The model at left is the result of the ProJet HD 3000 high-resolution printer, created using translucent acrylic plastic. The object at center was produced using a third party company, Shapeways Inc., in which the skeletal structure was printed using nylon 12 white plastic while the respiratory structures were fabricated in purple. These first two models were printed to actual scale, measuring approximately 11 cm in length. The object at right was made using the MakerBot. The skeletal structure was printed using natural colored ABS (acrylonitrile butadiene styrene) plastic and the lungs with lime green ABS. Because of the resolution limits of the MakerBot, this model could not be printed to scale without degradation of fine structure like the rib cage. Instead, the model was scaled up by almost 2X using the “fill build space” option to obtain the desired visual detail, resulting in an object of 21 cm in length.

Figure 2 shows the final products of each method of printing for the ex vivo rabbit skull CT data set. The model at left is the result from the ProJet HD 3000 high-resolution printer using translucent acrylic plastic. The model at center was printed in white nylon12 plastic through Shapeways Printing. The object at right was printed in white plastic using the MakerBot. All three objects were printed to scale and measure approximately 8.5 cm in length.

INSERT FIGURE 2

CAPTION: Figure 2: 3D printed models of a an ex vivo rabbit skull data set . The objects displayed were printed using a ProJet HD 3000 (left), Shapeways Inc. (Center) and a Makerbot Replicator (right). The scale bar denotes 1 cm.

Figure 3 depicts the final products for two methods of printing of a full in vivo CT data set of a rat. Both models consist of a complete skeletal structure (minus the tail) and removable lungs. The

INSERT FIGURE 3:

CAPTION: Figure 3: 3D printed models of a full rat X-ray CT data set. Objects were printed using a ProJet HD 3000 (left), and Shapeways Inc. (right). The scale bar denotes 1 cm.

model at left is the resultant of a high-resolution printer, the ProJet HD 3000, printed using translucent acrylic plastic. The model on the right was printed using Shapeways Printing, with the skeletal structure created using white nylon12 plastic and the lungs in purple. These two models were printed to actual scale, measuring approximately 19 cm in length. Because of the intricate detail required, the full skeleton could not be printed with the MakerBot Replicator.

During the exploration of three-dimensional printing techniques, certain advantages and disadvantages were observed and are outlined in Table 1

| Table 1: Comparison of 3D printing technologies available to print CT data sets | | |
|--|--|--|
| Method of Printing | Advantages | Disadvantages |
| MakerBot | Extremely fast, variety of color options, able to print in two colors, extremely inexpensive | Lowest level of detail. Removal of support materials is slow (on the order of a couple hours). |
| Shapeways | Variety of color options, variety of materials for printing, high level of detail, relatively inexpensive | Two-week time to process and receive an order |
| ProJet HD 3000 | Relatively quick turnaround, highest level of detail, high throughput, easy to remove support materials (wax). | Most expensive up front cost, only one color option during practical use. |

Discussion:

X-ray CT data sets of a living Lobund-Wistar rat and an ex vivo New Zealand White Rabbit skull were utilized to demonstrate the feasibility of 3D object production from pre-clinical biological data.

Models were generated using three different sources: 1) The popular Makerbot Replicator, 2) The third party company Shapeways Inc, and 3) The high-grade commercial ProJet HD 3000. Each printer was able to generate objects that satisfied the principle goal of enhanced data visualization.

During the process of printing pre-clinical CT data, the advantages and disadvantages of each method of printing were ascertained and summarized for the end user. The MakerBot Replicator is an inexpensive (\$1750) bench top solution that is accessible to virtually any lab around the globe. It can print in multiple colors with inexpensive inputs (a rat CT with lungs used about \$3.50 in plastic). However, the Makerbot is limited by resolution, and thus some models will have to be enlarged for proper extrusion and visualization of intended structure. Shapeways Inc. provides an outstanding number of selections with regard to color and material. The models are high resolution, and robust. While their prices are about 10-fold higher than the MakerBot on a per unit basis (a rat CT with lungs was \$41.61), a user can execute a limited number of jobs and avoid the upfront cost of purchasing a printer. The two-week lead time from Shapeways is a minor disadvantage. The ProJet HD 3000 provided outstanding models in terms of resolution and strength. We were fortunate enough to contract the printing of our objects on the ProJet HD 3000 at Innovation Park at Notre Dame (about \$30 for a rat CT with lungs for labor and materials). Users may have difficulty with access to this type of equipment as they are priced in the range of \$80,000, and it is cumbersome to print with multiple colors as well. Since each instrument/manufacture provides a different metric to describe the resolution for object printing (Shapeways minimum level of detail = 0.2 mm, minimum wall thickness = 0.7 mm,⁵ MakerBot slice thickness = 0.2-0.3 mm with a 0.4 mm nozzle,⁶ ProJet HD 3000 DPI = 656 x 656 x 800 with an accuracy of 0.025-0.05 mm⁷), a qualitative assessment of relative resolutions between each system suggests that both Shapeways and the ProJet HD system can print in high detail to scale, while some objects must be enlarged for successful use of the MakerBot. Collectively, all three methods are environmentally friendly and provide a convenient means to achieve facile production of highly detailed pre-clinical X-ray CT models.

Conclusion:

Gradually, the technology of 3D printing has become more accessible as both costs and complexity have been minimized.^{8,9} Now, literally anyone may print high-resolution, three-dimensional objects from digital files. These detailed three-dimensional objects can be useful tools for both educators and researchers alike. Furthermore, they provide a means of visual communication that assists in achieving

a clearer understanding.¹⁰ For example, medical researchers can use specimen or patient-specific models to improve both communication and comprehension with their colleagues and patients.¹¹ Although representation on 2D screens has come a long way, there is absolutely no replacement for the visual and sensory experience of holding a real object that is able to be held, rotated, examined and moved around. A model paired with an electronic data representation is even more powerful as it allows researchers to examine the physical object for regions of interest, and to find those areas on a computer model for further quantitative analysis. With proper data collection, surface rendering, and stereolithographic editing, it is possible to rapidly produce detailed, relatively inexpensive models from X-ray CT data. Here, we provide a detailed, step by step method for the production of a three-dimensional model from pre-clinical small animal data collected with an X-ray micro-CT. We acquired our in vivo and ex vivo CT data sets using an Albira image station, and performed subsequent processing with PMOD, ImageJ, Meshlab and Netfabb software packages. Finally, we provide detailed instructions to enable three-dimensional model printing with a range of commercial solutions. In each case, the end result is a model that provides a unique, hand-held, physical manifestation of the acquired tomographic data that would normally be restricted to a computer screen.

Acknowledgements: We warmly thank the Notre Dame Integrated Imaging Facility (NDIIF) and Carestream Health for financial support for this project. Research on rabbit cranial development supported by NSF BCS-1029149 to MJR.

Disclosures: W. Matthew Leevy is a consultant for Carestream Molecular Imaging. Brian Stamile is a support engineer for MakerBot Industries.

Required Programs

- **Albira Image Acquirer**
- **PMOD**
- **ImageJ**
- **Meshlab**
- **Netfabb**
- **ReplicatorG**

References:

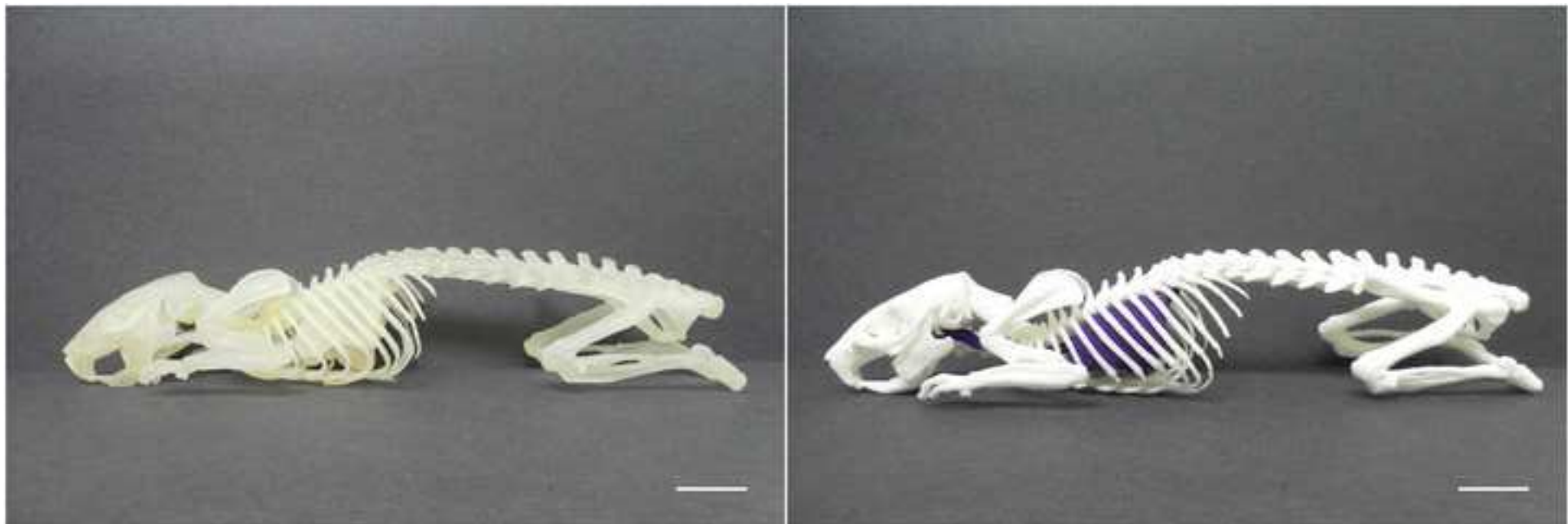
-
- ¹ Kazmer, D.O., & Speight, R.G. Polymer Injection Molding Technology for the Next Millennium. *Journal of Injection Molding Technology* **1** (2), 81–90 (1997).
- ² Bradshaw, S., Bowyer, A., & Haufe, P., The intellectual property implications of low-cost 3D printing. *ScriptEd*, **7** (1), 5-3. (2010).
- ³ Partridge, R., Conlisk, N., & Davies, J.A. In-lab three-dimensional printing: An inexpensive tool for experimentation and visualization for the field of organogenesis. *Organogenesis* **8** (1), 1-6 (2012).
- ⁴ Guillot, A., Champely, S., Batier, C., Thiriet, P., & Collet, C. Relationship between spatial abilities, mental rotation and functional anatomy learning. *Adv Health Sci Educ Theory Pract* **12**, 491-507, doi: 10.1007/s10459-006-9021-7 (2007).
- ⁵ Information collected from http://www.shapeways.com/materials/white_strong_flexible
- ⁶ Information collected from <http://store.makerbot.com/replicator.html>
- ⁷ Information from ProJet™ HD 3000 Technical Specification Brochure
- ⁸ Cignoni, P., & Scopigno, R. Sampled 3D models for CH applications: a viable and enabling new medium or just a technological exercise. *Association for Computing Machinery Journal on Computing and Cultural Heritage* **1** (1): 1. doi:10.1145/1367080.1367082 (2008).
- ⁹ Symes, M.D. et al. Integrated 3D-printed reactionware for chemical synthesis and analysis. *Nature Chemistry* **4**, 349–354, doi:10.1038/nchem.1313 (2012).
- ¹⁰ Sheridan, D.M. Fabricating consent: three-dimensional objects as rhetorical compositions. *Computers and Composition* **27** (4), 249-265 (2010).
- ¹¹ Windisch, G., Salaberger, D., Rosmarin, W., Kastner, J., Exner, G. U., Haldi-Brandl, V., & Anderhuber, F. A Model for Clubfoot Based on Micro-CT Data. *J. Anat.* **210**, 761-766, (2007)



*Figure

[Click here to download high resolution image](#)





*Figure
[Click here to download high resolution image](#)

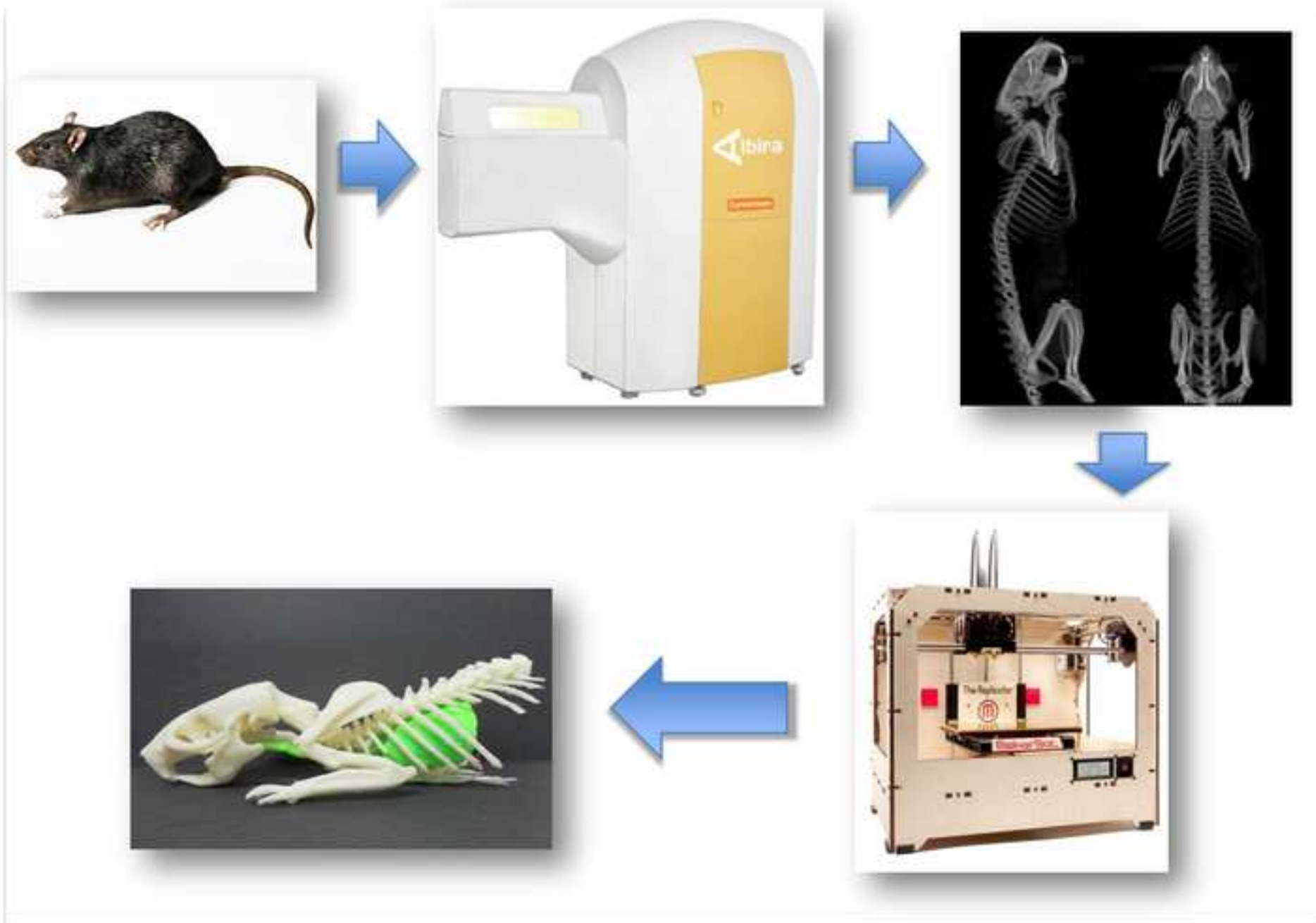


TABLE OF REQUIRED REAGENTS/MATERIALS USED

Required Specimens

- One in vivo or ex vivo sample will be used at the discretion of the user. For the present manuscript we used a single Lobund-Wistar rat for in vivo imaging, and one New Zealand White Rabbit skull for ex vivo specimen CT.

Required Equipment

- One small animal X-ray micro-CT is required. For the present manuscript, we used the CT of an Albira PET/SPECT/CT (Carestream Molecular Imaging, Woodbridge, CT).

Required Programs

- Albira Image Acquisition Software
- PMOD v3.2
- ImageJ v1.44p
- Meshlab v1.3.1
- Netfabb Studio Basic 4.9
- ReplicatorG

ARTICLE AND VIDEO LICENSE AGREEMENT

Title of Article:

3D PRINTING OF PRECLINICAL X-RAY COMPUTED TOMOGRAPHIC DATA SETS

Author(s):

Evan L. Doney, Lauren A. Krumbick, Justin M. Diener, Connor A. Wathen, Sarah E. Chapman, Brian Stamile, Jeremiah E. Scott, Matthew J. Ravosa, W. Matthew Leevy*

Item 1 (check one box): The Author elects to have the Materials be made available (as described at <http://www.jove.com/publish>) via: ☐ Standard Access ☒ Open Access

Item 2 (check one box):

- ☒ The Author is NOT a United States government employee.
- ☐ The Author is a United States government employee and the Materials were prepared in the course of his or her duties as a United States government employee.
- ☐ The Author is a United States government employee but the Materials were NOT prepared in the course of his or her duties as a United States government employee.

ARTICLE AND VIDEO LICENSE AGREEMENT

1. Defined Terms. As used in this Article and Video License Agreement, the following terms shall have the following meanings: “**Agreement**” means this Article and Video License Agreement; “**Article**” means the article specified on the last page of this Agreement, including any associated materials such as texts, figures, tables, artwork, abstracts, or summaries contained therein; “**Author**” means the author who is a signatory to this Agreement; “**Collective Work**” means a work, such as a periodical issue, anthology or encyclopedia, in which the Materials in their entirety in unmodified form, along with a number of other contributions, constituting separate and independent works in themselves, are assembled into a collective whole; “**CRC License**” means the Creative Commons Attribution-Non Commercial-No Derivs 3.0 Unported Agreement, the terms and conditions of which can be found at: <http://creativecommons.org/licenses/by-nc-nd/3.0/legalcode>; “**Derivative Work**” means a work based upon the Materials or upon the Materials and other pre-existing works, such as a translation, musical arrangement, dramatization, fictionalization, motion picture version, sound recording, art reproduction, abridgment, condensation, or any other form in which the Materials may be recast, transformed, or adapted; “**Institution**” means the institution, listed on the last page of this Agreement, by which the Author was employed at the time of the creation of the Materials; “**JoVE**” means MyJoVE Corporation, a Massachusetts corporation and the publisher of *The Journal of Visualized Experiments*; “**Materials**” means the Article and / or the Video; “**Parties**” means the Author and JoVE; “**Video**” means any video(s) made by the Author, alone or in conjunction with any other parties, or by JoVE or its affiliates or agents, individually or in collaboration with the Author or any other parties, incorporating all or any portion of the Article, and in which the Author may or may not appear.

2. Background. The Author, who is the author of the Article, in order to ensure the dissemination and protection of the Article, desires to have the JoVE publish the Article and create and transmit videos based on the Article. In furtherance of such goals, the Parties desire to memorialize in this Agreement the respective rights of each Party in and to the Article and the Video.

3. Grant of Rights in Article. In consideration of JoVE agreeing to publish the Article, the Author hereby grants to JoVE, subject to **Sections 4 and 7** below, the exclusive, royalty-free, perpetual (for the full term of copyright in the Article, including any extensions thereto) license (a) to publish, reproduce, distribute, display and store the Article in all forms, formats and media whether now known or hereafter developed (including without limitation in print, digital and electronic form) throughout the world, (b) to translate the Article into other languages, create adaptations, summaries or extracts of the Article or other Derivative Works (including, without limitation, the Video) or Collective Works based on all or any portion of the Article and exercise all of the rights set forth in (a) above in such translations, adaptations, summaries, extracts, Derivative Works or Collective Works and (c) to license others to do any or all of the above. The foregoing rights may be exercised in all media and formats, whether now known or hereafter devised, and include the right to make such modifications as are technically necessary to exercise the rights in other media and formats. If the “Open Access” box has been checked in **Item 1** above, JoVE and the Author hereby grant to the public all such rights in the Article as provided in, but subject to all limitations and requirements set forth in, the CRC License.

4. Retention of Rights in Article. Notwithstanding the exclusive license granted to JoVE in **Section 3** above, the

Author shall, with respect to the Article, retain the non-exclusive right to use all or part of the Article for the non-commercial purpose of giving lectures, presentations or teaching classes, and to post a copy of the Article on the Institution's website or the Author's personal website, in each case provided that a link to the Article on the JoVE website is provided and notice of JoVE's copyright in the Article is included. All non-copyright intellectual property rights in and to the Article, such as patent rights, shall remain with the Author.

5. Grant of Rights in Video – Standard Access. This **Section 5** applies if the "Standard Access" box has been checked in **Item 1** above or if no box has been checked in **Item 1** above. In consideration of JoVE agreeing to produce, display or otherwise assist with the Video, the Author hereby acknowledges and agrees that, Subject to **Section 7** below, JoVE is and shall be the sole and exclusive owner of all rights of any nature, including, without limitation, all copyrights, in and to the Video. To the extent that, by law, the Author is deemed, now or at any time in the future, to have any rights of any nature in or to the Video, the Author hereby disclaims all such rights and transfers all such rights to JoVE.

6. Grant of Rights in Video – Open Access. This **Section 6** applies only if the "Open Access" box has been checked in **Item 1** above. In consideration of JoVE agreeing to produce, display or otherwise assist with the Video, the Author hereby grants to JoVE, subject to **Section 7** below, the exclusive, royalty-free, perpetual (for the full term of copyright in the Article, including any extensions thereto) license (a) to publish, reproduce, distribute, display and store the Video in all forms, formats and media whether now known or hereafter developed (including without limitation in print, digital and electronic form) throughout the world, (b) to translate the Video into other languages, create adaptations, summaries or extracts of the Video or other Derivative Works or Collective Works based on all or any portion of the Video and exercise all of the rights set forth in (a) above in such translations, adaptations, summaries, extracts, Derivative Works or Collective Works and (c) to license others to do any or all of the above. The foregoing rights may be exercised in all media and formats, whether now known or hereafter devised, and include the right to make such modifications as are technically necessary to exercise the rights in other media and formats. For any Video to which this Section 6 is applicable, JoVE and the Author hereby grant to the public all such rights in the Video as provided in, but subject to all limitations and requirements set forth in, the CRC License.

7. Government Employees. If the Author is a United States government employee and the Article was prepared in the course of his or her duties as a United States government employee, as indicated in **Item 2** above, and any of the licenses or grants granted by the Author hereunder exceed the scope of the 17 U.S.C. 403, then the rights granted hereunder shall be limited to the maximum rights permitted under such statute. In such case, all provisions contained herein that are not in conflict with such statute shall remain in full force and effect, and all provisions contained herein that do so conflict

shall be deemed to be amended so as to provide to JoVE the maximum rights permissible within such statute.

8. Likeness, Privacy, Personality. The Author hereby grants JoVE the right to use the Author's name, voice, likeness, picture, photograph, image, biography and performance in any way, commercial or otherwise, in connection with the Materials and the sale, promotion and distribution thereof. The Author hereby waives any and all rights he or she may have, relating to his or her appearance in the Video or otherwise relating to the Materials, under all applicable privacy, likeness, personality or similar laws.

9. Author Warranties. The Author represents and warrants that the Article is original, that it has not been published, that the copyright interest is owned by the Author (or, if more than one author is listed at the beginning of this Agreement, by such authors collectively) and has not been assigned, licensed, or otherwise transferred to any other party. The Author represents and warrants that the author(s) listed at the top of this Agreement are the only authors of the Materials. If more than one author is listed at the top of this Agreement and if any such author has not entered into a separate Article and Video License Agreement with JoVE relating to the Materials, the Author represents and warrants that the Author has been authorized by each of the other such authors to execute this Agreement on his or her behalf and to bind him or her with respect to the terms of this Agreement as if each of them had been a party hereto as an Author. The Author warrants that the use, reproduction, distribution, public or private performance or display, and/or modification of all or any portion of the Materials does not and will not violate, infringe and/or misappropriate the patent, trademark, intellectual property or other rights of any third party. The Author represents and warrants that it has and will continue to comply with all government, institutional and other regulations, including, without limitation all institutional, laboratory, hospital, ethical, human and animal treatment, privacy, and all other rules, regulations, laws, procedures or guidelines, applicable to the Materials, and that all research involving human and animal subjects has been approved by the Author's relevant institutional review board.

10. JoVE Discretion. If the Author requests the assistance of JoVE in producing the Video in the Author's facility, the Author shall ensure that the presence of JoVE employees, agents or independent contractors is in accordance with the relevant regulations of the Author's institution. If more than one author is listed at the beginning of this Agreement, JoVE may, in its sole discretion, elect not take any action with respect to the Article until such time as it has received complete, executed Article and Video License Agreements from each such author. JoVE reserves the right, in its absolute and sole discretion and without giving any reason therefore, to accept or decline any work submitted to JoVE. JoVE and its employees, agents and independent contractors shall have full, unfettered access to the facilities of the Author or of the Author's institution as necessary to make the Video, whether actually published or not. JoVE has sole discretion as to the method of making and publishing the Materials, including,

ARTICLE AND VIDEO LICENSE AGREEMENT

without limitation, to all decisions regarding editing, lighting, filming, timing of publication, if any, length, quality, content and the like.

11. **Indemnification.** The Author agrees to indemnify JoVE and/or its successors and assigns from and against any and all claims, costs, and expenses, including attorney's fees, arising out of any breach of any warranty or other representations contained herein. The Author further agrees to indemnify and hold harmless JoVE from and against any and all claims, costs, and expenses, including attorney's fees, resulting from the breach by the Author of any representation or warranty contained herein or from allegations or instances of violation of intellectual property rights, damage to the Author's or the Author's institution's facilities, fraud, libel, defamation, research, equipment, experiments, property damage, personal injury, violations of institutional, laboratory, hospital, ethical, human and animal treatment, privacy or other rules, regulations, laws, procedures or guidelines, liabilities and other losses or damages related in any way to the submission of work to JoVE, making of videos by JoVE, or publication in JoVE or elsewhere by JoVE. The Author shall be responsible for, and shall hold JoVE harmless from, damages caused by lack of sterilization, lack of cleanliness or by contamination due to the making of a video by JoVE its employees, agents or independent contractors. All sterilization, cleanliness or decontamination procedures shall be solely the responsibility of the Author and shall be undertaken at the Author's expense. All indemnifications provided herein shall include JoVE's attorney's fees and costs related to said losses or

damages. Such indemnification and holding harmless shall include such losses or damages incurred by, or in connection with, acts or omissions of JoVE, its employees, agents or independent contractors.

12. **Fees.** To cover the cost incurred for publication, JoVE must receive payment before production and publication the Materials. Payment is due in 21 days of invoice. Should the Materials not be published due to an editorial or production decision, these funds will be returned to the Author. Withdrawal by the Author of any submitted Materials after final peer review approval will result in a US\$1,200 fee to cover pre-production expenses incurred by JoVE. If payment is not received by the completion of filming, production and publication of the Materials will be suspended until payment is received.

13. **Transfer, Governing Law.** This Agreement may be assigned by JoVE and shall inure to the benefits of any of JoVE's successors and assignees. This Agreement shall be governed and construed by the internal laws of the Commonwealth of Massachusetts without giving effect to any conflict of law provision thereunder. This Agreement may be executed in counterparts, each of which shall be deemed an original, but all of which together shall be deemed to be one and the same agreement. A signed copy of this Agreement delivered by facsimile, e-mail or other means of electronic transmission shall be deemed to have the same legal effect as delivery of an original signed copy of this Agreement.

A signed copy of this document must be sent with all new submissions. Only one Agreement required per submission.

AUTHOR:

Name:

W. Matthew Leevy

Department:

Chemistry and Biochemistry

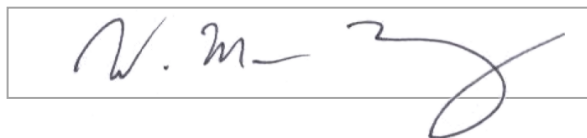
Institution:

University of Notre Dame

Article Title:

3D PRINTING OF PRECLINICAL X-RAY COMPUTED TOMOGRAPHIC DATA SETS

Signature:



Date:

7/19/12

Please submit a signed and dated copy of this license by one of the following three methods:

- 1) Upload a scanned copy as a PDF to the JoVE submission site upon manuscript submission (preferred);
- 2) Fax the document to +1.866.381.2236; or
- 3) Mail the document to JoVE / Attn: JoVE Editorial / 17 Sellers St / Cambridge, MA 02139

For questions, please email editorial@jove.com or call +1.617.945.9051.

MS # (internal use):

Response to Reviewer Comments:

We warmly thank the reviewers for valuable comments, and have addressed any issues on a point by point basis in the following summary. We are heartened that the reviews have strengthened the manuscript.

Best Regards,

WML and Co-Authors

Reviewer #4: *Summary:*

The authors proposed the use of 3 different 3D printing techniques to create models out of pre-clinical x-ray images. Although the manuscript presented something of interest, the concerns listed below should be adequately addressed.

Major Concerns:

Stronger justifications are required for people to print a 3D model using images obtained from a preclinical x-ray machine. What are the real advantages here? How can we justify this type of practice? Can we do the same thing with other imaging modalities? In terms of education, perhaps one can consider building a 3D model for learning about anatomy (with removable organ parts) just like the organic chemistry model kit. For the purpose of research, perhaps printing a mold for each individual rodent for repeated scans in a longitudinal study or a multi modality study (e.g. assessment of efficacy of drug treatment or radiotherapy).

We agree with the reviewer, and have added the following two sentences to strengthen the long abstract:

“The real benefits of this method result from the tangible experience a researcher can have with data that cannot be adequately conveyed through a computer screen. The translation of pre-clinical 3D data to a physical object that is an *exact* copy of the test subject is a powerful tool for visualization and communication, especially for relating imaging research to students, or those in other fields.”

Minor Concerns:

1. p.4 (Open original MicroPET file): The manuscript is about microCT studies, so is MicroPET the file name given by Carestream? It is odd to name a program used in a multi-modal scanner this way.

MicroPET is the name conventionally given to image files acquired by the Albira Imaging System. We have updated the text under 3.1 as follows:

“Open original MicroPET (data format for all modalities on the Albira Imaging System) file”

2. p. 4, last line: -1000 must be HU (Hounsfield Units). Please include this and explain what HU is.

The text under 3.3 has been updated as follows:

Under the ‘VOI Tools’ tab select ‘Mask Outside Selected VOI’ and set the masking value to -1000 Hounsfield Units (HU, radiodensity scale for CT), which will effectively set the external space to the CT density value of air.

3. p. 5 (save as Analyze file): Analyze was not mentioned as one of those programs used in the manuscript. Why the data were saved as an Analyze format?

Analyze files were mentioned earlier in the segmentation section. To avoid confusion, segmentation and converting to DICOM have been split into two sections, making it necessary for the lung to be saved as an Analyze file in between sections.

4. p. 6: Explain the differences between Meshlab and Netfabb Studio Basic?

Section 3.4 has been updated as follows:

“3.4 Two programs, Meshlab v1.3.1 and Netfabb Studio Basic 4.9, will concurrently remove any excess mesh, join together disconnected meshes, repair holes, and smooth the final mesh. The primary differences between these two programs are the tool sets made available to the user, and some of the interface navigation control. They are both 3D mesh editing software programs, and their use together provides the easiest approach to editing the model.”

5. p. 11 (Figure 1): There were differences in the 3D printed models using the 3 different methods. For example, some bone segments are shorter in one model vs another model. The neck portion was missing using Shapeways Inc. The model made by the Marker Replicator shows a green object on the neck. Explanation on these types of observations are needed.

The caption of Figure 1 has been updated as follows to improve clarity:

CAPTION: Figure 1: 3D printed models of the lungs and skeletal features of a rat X-ray CT data set. Objects were printed using a ProJet HD 3000 (left), Shapeways Inc. (Center) or a Makerbot Replicator (right). The scale bar denotes 2 cm. Note that the scale bar in panel C is smaller than that of A and B, which reflects that in some cases the Makerbot must print an enlarged object in order to output sufficient detail.

6. p. 12 (Table 1): It appears that Shapeways provides a reasonable choice for most labs. How would a turn-around time of two weeks impact negatively on an operation, especially for an educational institution? How frequently should a lab use this type of 3D printing?

The pros and cons of each type of printing have been detailed in Table 1 and accompanying text. Given the methods format of this manuscript, we will humbly leave it to the researcher's discretion as to which strategy is most ideal, and how the lag-time, print quality, and cost will affect their individual objectives.

7. p. 13 (conclusion): 3D rendering displayed on a nice monitor can provide a lot of useful information in 3D. How much value would 3D printing add to this?

The following sentences have been added to strengthen the conclusion:

"Although representation on 2D screens has come a long way, there is absolutely no replacement for the visual and sensory experience of holding a real object that is able to be held, rotated, examined and moved around. A model paired with an electronic data representation is even more powerful as it allows researchers to examine the physical object for regions of interest, and to find those areas on a computer model for further quantitative analysis."

"Finally, we provide detailed instructions to enable three-dimensional model printing with a range of commercial solutions. In each case, the end result is a model that provides a unique, hand-held, physical manifestation of the acquired tomographic data that would normally be restricted to a computer screen."

8. p. 14 (Required Programs): What was ReplicatorG used for?

In section 4.1 the manuscript discusses how ReplicatorG is used to communicate with the Makerbot.